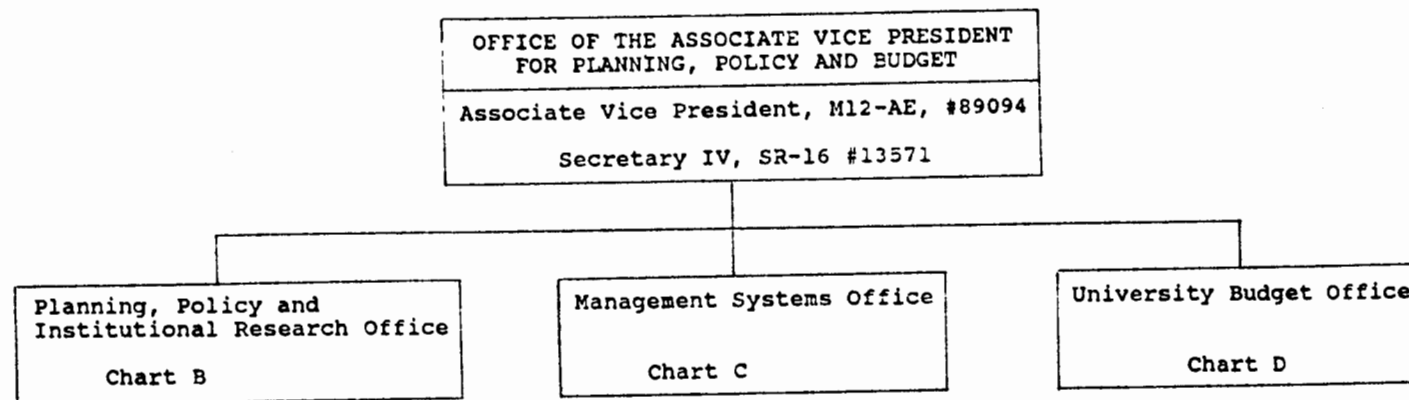


STATE OF HAWAII
SYSTEMWIDE ADMINISTRATION
ASSOCIATE VICE PRESIDENT FOR
PLANNING, POLICY AND BUDGET

Office of the Associate Vice President

Position Organization Chart

Chart A



APPROVED:

Albert J. Simone, FEB 13 1986
ALBERT J. SIMONE Date

Office abolished, 7/88

~~CHART UPDATED~~ ~~CHART UPDATED~~
DATE ~~OCT 1987~~ DATE FEB 13 1986

STATE OF HAWAII
SYSTEMWIDE ADMINISTRATION
ASSOCIATE VICE PRESIDENT FOR
PLANNING, POLICY AND BUDGET
Planning, Policy and
Institutional Research
Chart B

PLANNING, POLICY AND
INSTITUTIONAL RESEARCH OFFICE
Director of Planning and Policy
M10-AM, #89173
Secretary IV, SR-16, #17481

PLANNING SECTION	POLICY SECTION	INSTITUTIONAL RESEARCH SECTION
Planning Officer, M05-AM, (new) Secretary II, SR-12, (new)	Policy Officer, M05-AM, #89013 ^{1/} Educational Specialist III, ^{2/} P-09, #80015	Director, M05-AM, #80222 ^{3/} Secretary III, SR-14, #19069 Institutional Analyst IV, P-12, #80223 ^{4/} Institutional Analyst III, P-10, #80220 Institutional Analyst II, P-08, #80217 ^{5/} Institutional Analyst I, P-04, #80213 Computer Specialist III, P-07, #80218 ^{6/}

^{1/}Position currently classified as Student Affairs Program
and Policy Officer (M04, NM)

^{2/}Position currently classified as Student Services Specialist III,
(P09)

^{3/}Position currently classified as Institutional Analyst IV, (P12)

^{4/}Position currently classified as Institutional Analyst III, (P10)

^{5/}Position identified for reduction; will be reallocated

APPROVED:

Albert J. Simone FEB 13 1986
ALBERT J. SIMONE Date

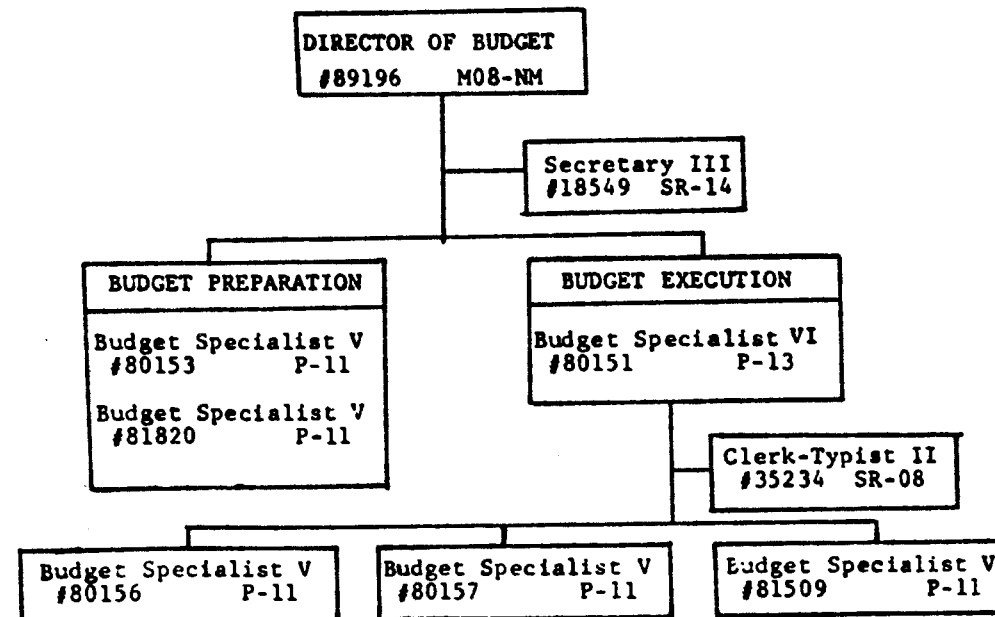
CHART UPDATED

DATE OCT 1987

CHART UPDATED
DATE FEB 13 1986

*Revised 2/27/88 due to abolishment
of VPPPB's off*

STATE OF HAWAII
SYSTEMWIDE ADMINISTRATION
ASSOCIATE VICE PRESIDENT FOR
PLANNING, POLICY AND BUDGET
University Budget Office
Chart D



APPROVED:

Kenji Sumida 5/6/86
Kenji Sumida Date

*Revised 2/88 due to abolishment
of VPPPB's office.*

CHART UPDATED

DATE OCT 1987

CHART UPDATED

DATE MAY 6 1986