

STATE OF HAWAII  
UNIVERSITY OF HAWAII  
UNIVERSITY OF HAWAII AT MANOA  
COLLEGE OF EDUCATION

ORGANIZATIONAL CHART

CHART I

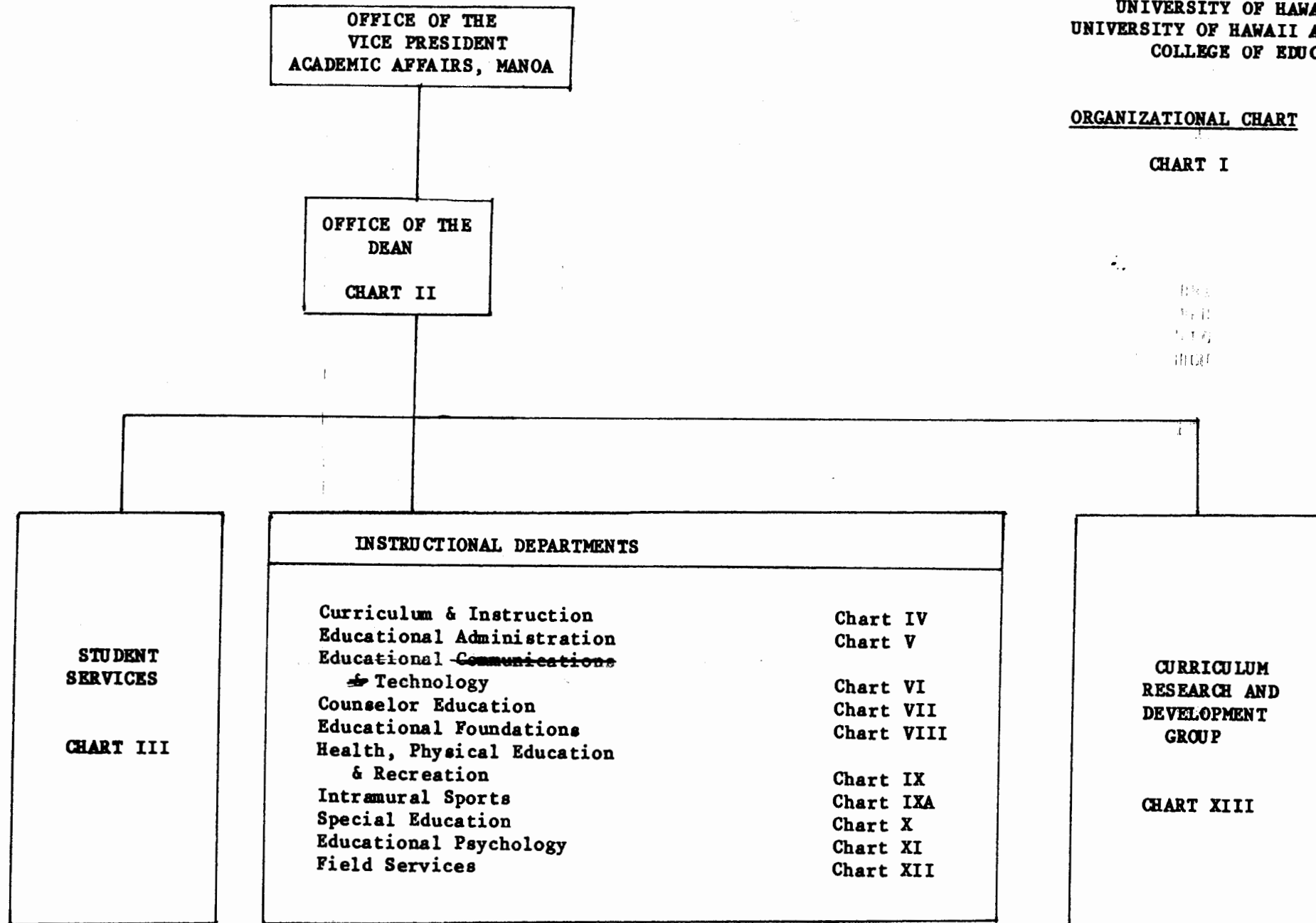


CHART UPDATED  
DATE OCT 1987

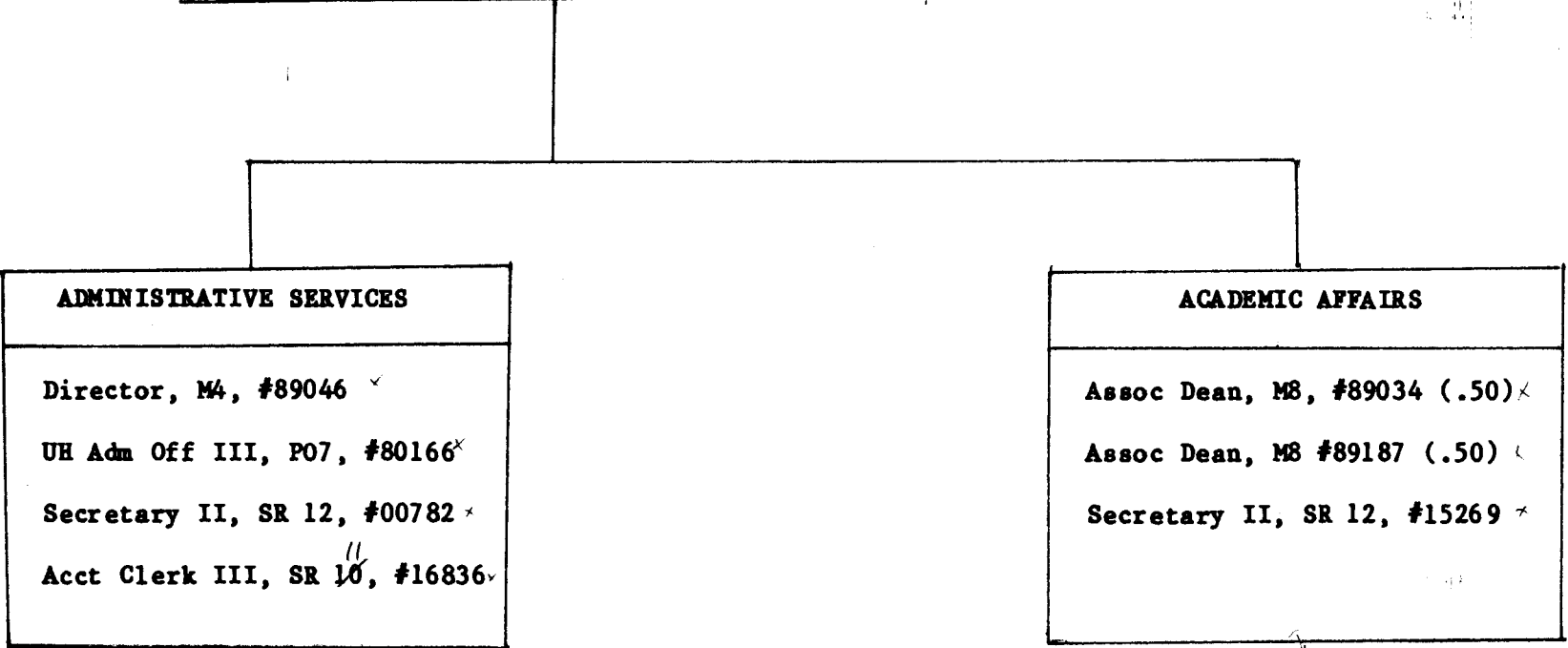
Revised  
8/88

STATE OF HAWAII  
UNIVERSITY OF HAWAII AT MANOA  
COLLEGE OF EDUCATION  
OFFICE OF THE DEAN

OFFICE OF THE DEAN
Dean, M11, #89015
Secretary III, SR 14, #00773 *

POSITION ORGANIZATION CHART

Chart II



Experimental Programs  
Instructional Positions 2.50  
CHART UPDATED  
DATE OCT 1987  
P/T 85201, 85201 x  
P/T 85202, 50 x

STATE OF HAWAII  
UNIVERSITY OF HAWAII AT MANOA  
COLLEGE OF EDUCATION  
STUDENT SERVICES

OFFICE OF THE  
DEAN

Position Organization Chart

Chart III

OFFICE OF STUDENT SERVICES

Asst Dean, M4, #89000 ✓

Secretary II, SR 12, #15270 ✓

Clerk-<sup>Typist</sup> Steno II, SR8 #19558 ✓

Faculty Positions (3.00)

Full-time: #82423, #83450, #84544 ✓

CHART UPDATED

DATE OCT 1987

STATE OF HAWAII  
UNIVERSITY OF HAWAII AT MANOA  
COLLEGE OF EDUCATION  
CURRICULUM & INSTRUCTION

OFFICE OF THE  
DEAN

POSITION ORGANIZATION CHART

Chart IV

DEPARTMENT OF CURRICULUM AND INSTRUCTION

Chairman (Appointed from Instructional Positions)

Secretary II, SR 12, #00785

Clerk-Steno III, SR 11, #12844

Clerk-Steno II, SR 9, #15121 (.50)

UH Adm & Fiscal Support Sp, P01, #80390S\*

Instructional Positions (25.50)

Full-time: #82250, #82043, #82093, #82144, #84090  
#82288, #82300, #82347, #82632, #82711  
#84529, #83084, #83335, #83922, #83923  
#83954, #83672, #83995, #84407, #84670  
#84680, #82235

Part-time: #83872 (.50), #84527 (.50), #88646 (.50), #85646 (.50)  
#88298 (.50), #89187 (.50), ~~#82276 (.50)~~

*transferred internally  
to Educ. Psych.*

\* Temporary Position: Center for Economic Education

CHART UPDATED

DATE OCT 1987

STATE OF HAWAII  
UNIVERSITY OF HAWAII AT MANOA  
COLLEGE OF EDUCATION  
EDUCATIONAL ADMINISTRATION

OFFICE OF THE  
DEAN

POSITION ORGANIZATION CHART

Chart V

DEPARTMENT OF EDUCATIONAL ADMINISTRATION

Chairman (Appointed from Instructional Positions)

Secretary II, SR 12, #17304

Instructional Positions (6.50)

Full-time: #82006, #82075, #84402, #84437  
#84353, #85054

Part-time: #85198 (.50)

CHART UPDATED

DATE OCT 1987

STATE OF HAWAII  
UNIVERSITY OF HAWAII AT MANOA  
COLLEGE OF EDUCATION  
EDUCATIONAL COMMUNICATIONS  
& TECHNOLOGY

OFFICE OF THE  
DEAN

Position Organization Chart

Chart VI

DEPARTMENT OF EDUCATIONAL COMMUNICATIONS & TECHNOLOGY

Chairman (Appointed from Instructional Positions)

Secretary II, SR 12, #15747

Instructional Positions (4.00)

Full-time: #83299, #82755 ✓  
#82963, #82088 ✓

*Revised, 5/88*

CHART UPDATED  
DATE OCT 1987

STATE OF HAWAII  
UNIVERSITY OF HAWAII AT MANOA  
COLLEGE OF EDUCATION  
COUNSELOR EDUCATION

OFFICE OF THE  
DEAN

POSITION ORGANIZATION CHART

Chart VII

DEPARTMENT OF COUNSELOR EDUCATION

Chairman (Appointed from Instructional Positions)

Secretary II, SR 12, #21475

Instructional Positions (6.00)

Full-time: #84129, #82333, #82710  
#82820, #83389, #84517

CHART UPDATED

DATE OCT 1987

STATE OF HAWAII  
UNIVERSITY OF HAWAII AT MANOA  
COLLEGE OF EDUCATION  
EDUCATIONAL FOUNDATIONS

OFFICE OF THE  
DEAN

POSITION ORGANIZATION CHART

Chart VIII

DEPARTMENT OF EDUCATIONAL FOUNDATIONS

Chairman (Appointed from Instructional Positions)

Secretary II, SR 12, #13672

Instructional Positions (7.00)

Full-time: #83952, #82617, #82678  
#83196, #84261, #84835

Part-time: #82141 (.50), #85197 (.50)

CHART UPDATED

DATE OCT 1987



STATE OF HAWAII  
UNIVERSITY OF HAWAII AT MANOA  
COLLEGE OF EDUCATION  
HEALTH, PHYSICAL EDUCATION,  
& RECREATION

OFFICE OF THE  
DEAN

POSITION ORGANIZATION CHART

Chart IX

DEPARTMENT OF HEALTH, PHYSICAL EDUCATION  
& RECREATION

Chairman (Appointed from Instructional Positions)

Secretary II, SR 12, #07470

Instructional Positions (13.00)

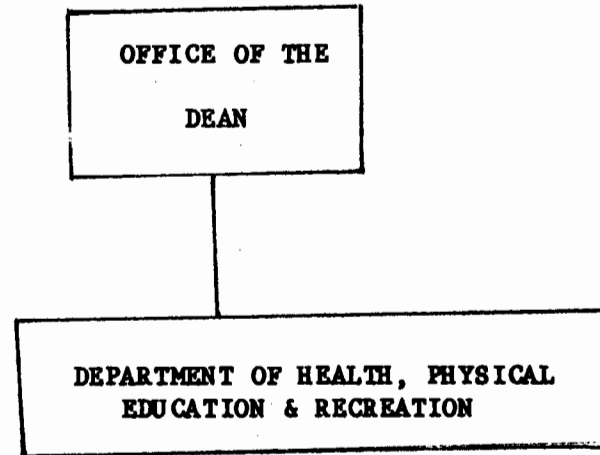
Full-time: #82083, #82319, #82479, #82528  
#82578, #82861, #83131, #83425  
#84065, #84117, #84352, #84381  
#84514

INTRAMURAL SPORTS

CHART UPDATED  
DATE OCT 1987

023 148  
3.

STATE OF HAWAII  
UNIVERSITY OF HAWAII AT MANOA  
COLLEGE OF EDUCATION  
INTRAMURAL SPORTS



POSITION ORGANIZATION CHART

Chart IXA

INTRAMURAL SPORTS

Director (Appointed from Specialist Positions)

Clerk-Steno II, SR 9, #26460<sup>\*</sup>

Locker Room Attendant, WB02, #00464<sup>\*</sup>, #00504<sup>\*</sup>, #03940<sup>\*</sup>

Specialists Positions (3.00)

Full-time: #83512; #83788<sup>\*</sup>, #85083<sup>\*</sup>

CHART UPDATED

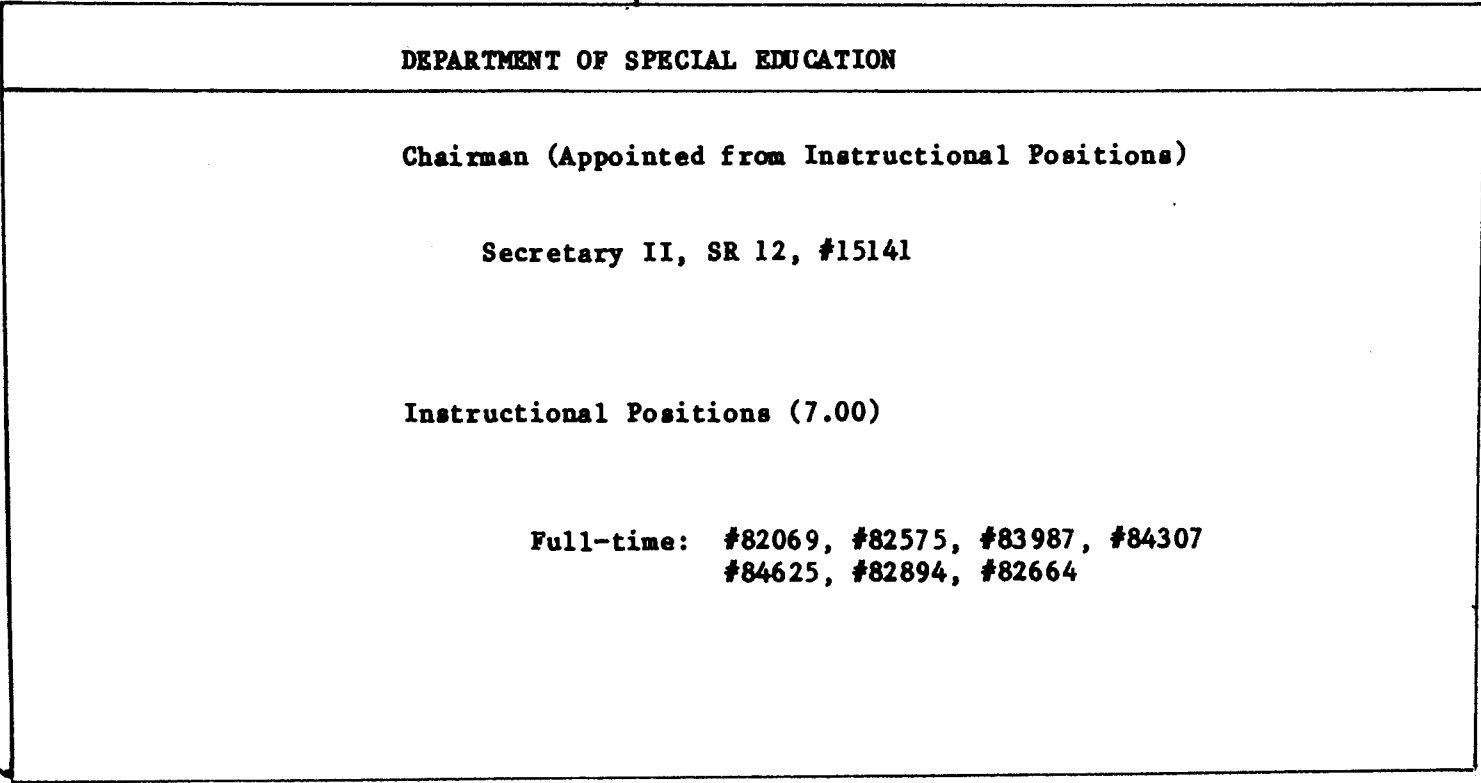
DATE OCT 1987

STATE OF HAWAII  
UNIVERSITY OF HAWAII AT MANOA  
COLLEGE OF EDUCATION  
SPECIAL EDUCATION

OFFICE OF THE  
DEAN

POSITION ORGANIZATION CHART

Chart X



**CHART UPDATED**

DATE OCT 1987

STATE OF HAWAII  
UNIVERSITY OF HAWAII AT MANOA  
COLLEGE OF EDUCATION  
EDUCATIONAL PSYCHOLOGY

OFFICE OF THE  
DEAN

Position Organization Chart

Chart XI

DEPARTMENT OF EDUCATIONAL PSYCHOLOGY

Chairman (Appointed from Instructional Positions)

Secretary II, SR 12, #11895✓

Instructional Positions (7.75)

Full-time: #82571✓, #82095✓, #82105✓  
#84004✓, #84141✓

Part-time: <sup>85208</sup>~~#84319~~ (.25), #88180 (.50)✓, #82276 ~~(.50)~~ additional FTE trnsfrd from C+I. )  
#82193 (.50)✓, #89034 (.50)✓, #88588 (.50)✓

84319?  
84225I? ✓  
to be changed to 85208 permanently,  
i.e. College of Ed .25 pos.  
(.75 = Psychology Dept.)

CHART UPDATED

DATE OCT 1987

STATE OF HAWAII  
UNIVERSITY OF HAWAII AT MANOA  
COLLEGE OF EDUCATION  
FIELD SERVICES

OFFICE OF THE  
DEAN

POSITION ORGANIZATION CHART

Chart XII

OFFICE OF FIELD SERVICES

Director (Appointed from Instructional Positions)

Secretary II, SR 12, #12977

Instructional Positions (7.50)

Full-time: #82229, #82360, #82484, #82897  
#83204, #83473, #84191

Part-time: #83872 (.50)

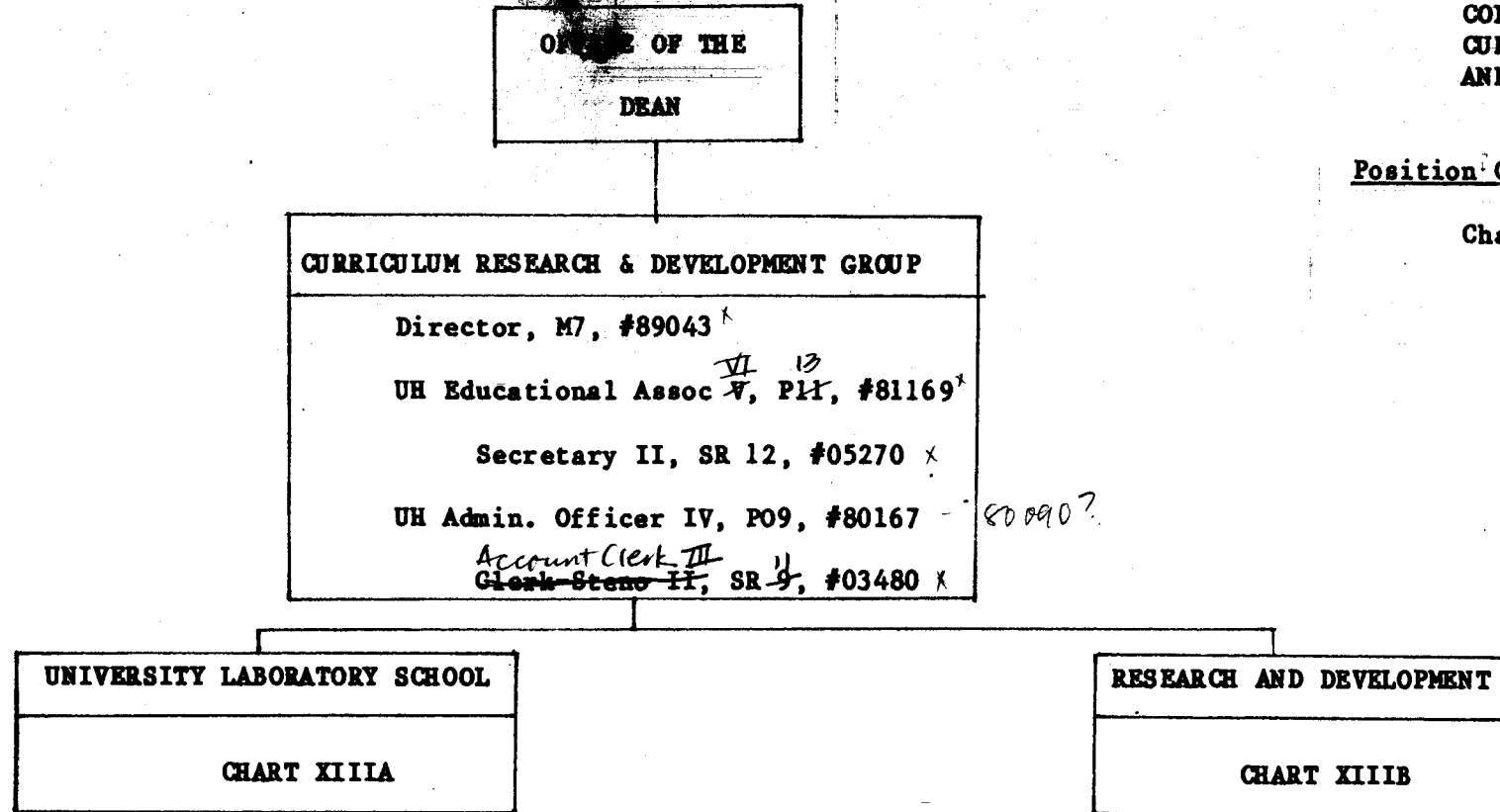
CHART UPDATED

DATE OCT 1987

STATE OF HAWAII  
UNIVERSITY OF HAWAII AT MANOA  
COLLEGE OF EDUCATION  
CURRICULUM RESEARCH  
AND DEVELOPMENT GROUP

Position Organization Chart

Chart XIII



LABORATORY SCHOOL CAFETERIA	
Full-time:	Sch Food Svc Mgr III, F2, #04945 <sup>*</sup>
	Cook I, WB5, #05092 <sup>*</sup>
	Cafe Helper, WB2, #08095 <sup>*</sup>
Part-time:	Cafe Helper, WB2, #13934 (.50) <sup>*</sup>

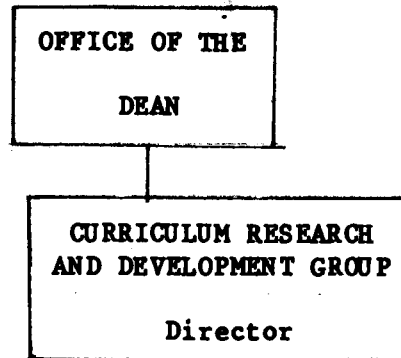
Revised, 8/88

**CHART UPDATED**

DATE OCT 1987

JUL 21 1987

STATE OF HAWAII  
UNIVERSITY OF HAWAII AT MANOA  
COLLEGE OF EDUCATION  
CURRICULUM RESEARCH  
AND DEVELOPMENT GROUP



Position Organization Chart

Chart XIII A

CHART UPDATED

DATE OCT 1987

UNIVERSITY LABORATORY SCHOOL

Principal (Appointed from Instructional Positions)

Secretary II, SR 12, #00783 \*  
Clerk ~~Sec~~ II, SR ~~08~~, #36690 \*

Instructional Positions (3.70)

Part-time: Admintr-Univ Lab Sch & Prof, MO5, #89257 (.90), #84608 (.35)\*  
Assoc Prof, #82154 (.20)\*, #83227 (.05)\*  
Asst Prof, #84377 (.30)\*, #82160 (.55), #82793 (.20)\*, #83380 (.85)\*, #84077(.10)\*  
Research, #82950 (.20)\*

Administrative, Professional, Technical Positions (12.05)

Full-time: UH Ed Assoc III, PO7, #80433<sup>EA III</sup>, #81170<sup>EA IV</sup> 80480

Part-time: UH Ed Assoc VI, P13, #80476 (.05)\*, #80470 (.20)\*, 80435 (.15)  
UH Ed Assoc V, P11, #80435 (.15)\*, #80468 (.15)\*, #80443 (.50)\*, #80482 (.10)\*, 80466 (.25)  
UH Ed Assoc IV, PO9, #80484 (.90)\*, #80480 (.90)\*, #80481 (.25)\*, #80474 (.30)\*, #80993 (.80)\*,  
#80466 (.40)\*, #80472 (.30)\*, 81170 (.75)  
UH Ed Assoc III, PO7, #80418 (.15)\*, #80420 (.25)\*, #80917 (.15)\*, #81186 (.10)\*, #80494 (.25)\*,  
#80434 (.65)\*, #80463 (.40)\* (abolished)  
UH Ed Assoc II, PO5, #80483 (.25)\*, #80485 (.50)\*, #80429\* (.25), #80465 (.80)\*, 80849 (.30)\*  
UH Ed Assoc I, PO3, #80464 (.80)\*, #81811 (.25)\*  
UH Pub Spec II, PO5, #80109 (.25)\*

Revised,  
8/88

JUL 21 1987

OFFICE OF THE  
DEAN

CURRICULUM RESEARCH  
AND DEVELOPMENT GROUP  
Director

STATE OF HAWAII  
UNIVERSITY OF HAWAII AT MANOA  
COLLEGE OF EDUCATION  
CURRICULUM RESEARCH  
AND DEVELOPMENT GROUP  
RESEARCH AND DEVELOPMENT  
Position Organization Chart

Chart XIII B

Revised 8/88

CHART UPDATED

OCT 1987

RESEARCH AND DEVELOPMENT

Instruction Positions (11.80)

Full-time: Prof, #84031<sup>x</sup>, #83951<sup>x</sup>, #82272<sup>x</sup>  
Asst Prof, #82387M<sup>x</sup>

Part-time: Admintr-Univ Lab Sch & Prof, M05, #89257<sup>?</sup> (.10) #84608 (.65)<sup>x</sup>, #82141M (.50)<sup>x</sup>, #83997\* (.50)  
Assoc Prof, #83227 (.95)<sup>x</sup>, #82154 (.80)<sup>x</sup>, #85186S\* (.50)  
Asst Prof, #82793 (.80)<sup>x</sup>, #84377 (.70)<sup>x</sup>, #83380 (.15)<sup>x</sup>, #82160 (.45)<sup>x</sup>, #84077 (.90)<sup>x</sup>  
Researcher, #82950 (.80)<sup>x</sup>

Administrative, Professional, Technical Positions (19.95)

Full-time: UH Ed Assoc VI, P13, #80486<sup>x</sup>, #80495<sup>x</sup>  
UH Ed Assoc V, P11, #80440<sup>x</sup>  
UH Ed Assoc III, P07, #80491<sup>x</sup>, #80228<sup>x</sup>

Part-time: UH Ed Assoc VI, P13, #80476 (.95)<sup>x</sup>, #80470 (.80)<sup>x</sup>  
UH Ed Assoc V, P11, #80435 (.85)<sup>x</sup>, #80468 (.85)<sup>x</sup>, #80443 (.50)<sup>x</sup>, #80482 (.90)<sup>x</sup>  
UH Ed Assoc IV, P09, #80484 (.10)<sup>x</sup>, #80480 (.10)<sup>x</sup>, #80481 (.75)<sup>x</sup>, #80474 (.70)<sup>x</sup>, #80993 (.20)<sup>x</sup>,  
#80466 (.60)<sup>x</sup>, #80472 (.70)<sup>x</sup>  
UH Ed Assoc III, P07, #80418 (.85)<sup>x</sup>, #80420 (.75)<sup>x</sup>, #80917 (.85)<sup>x</sup>, #81186 (.40)<sup>x</sup>, #80494 (.75)<sup>x</sup>,  
#80434 (.10)<sup>x</sup>, #80463 (.60)<sup>x</sup> (abolished)  
UH Ed Assoc II, P05, #80483 (.75)<sup>x</sup>, #80485 (.50)<sup>x</sup>, #80429S\* (.75), #80465 (.20)<sup>x</sup>, 80849 (-70)<sup>x</sup>  
UH Ed Assoc I, P03, #80464 (.20)<sup>x</sup>  
UH Pub Spec I, P05, #80109 (.25)<sup>x</sup>

Clerk-Typist ~~III~~, SR 08, #35206<sup>x</sup>  
III, SR 10

JUL 21 1987