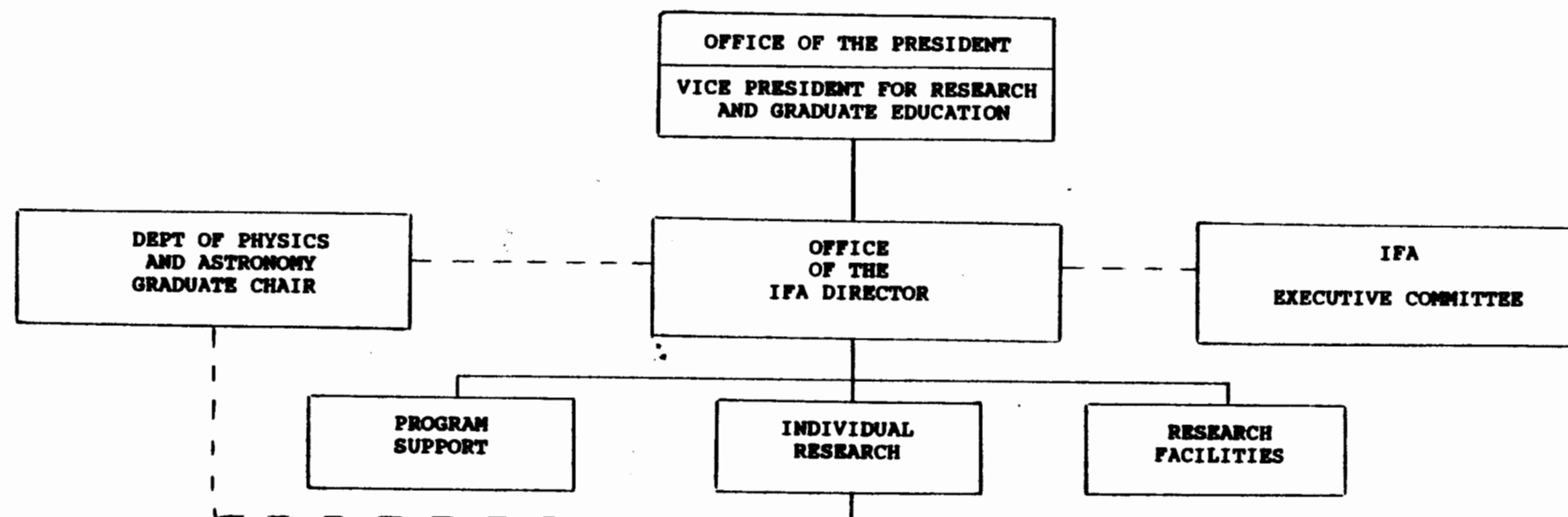
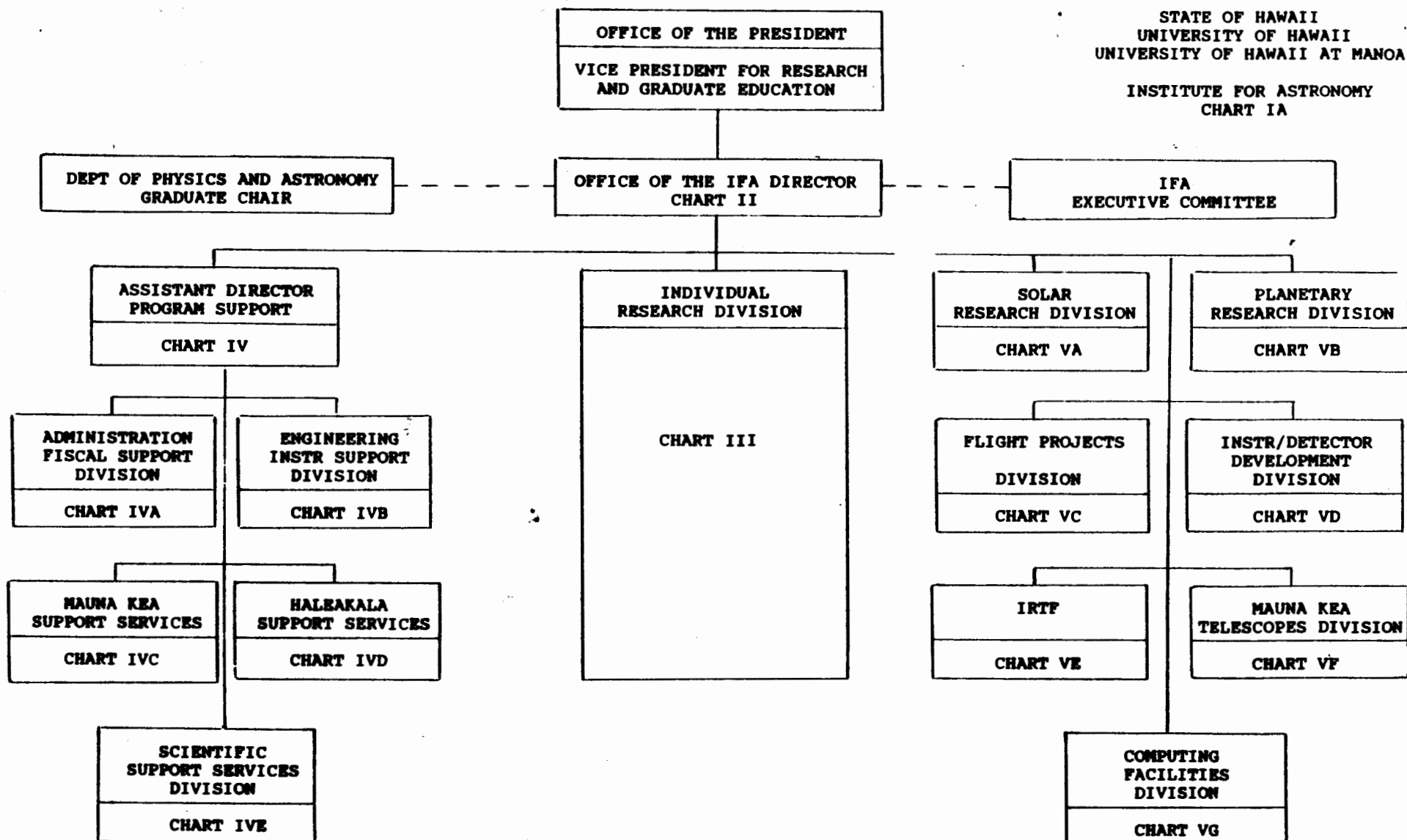


STATE OF HAWAII  
UNIVERSITY OF HAWAII  
UNIVERSITY OF HAWAII AT MANOA

INSTITUTE FOR ASTRONOMY  
CHART I



Approved by: *Ronald B. Hall*  
Title: Director, Institute for Astronomy  
Date: March 18, 1988



Approved by:

*Ronald M. Hall*

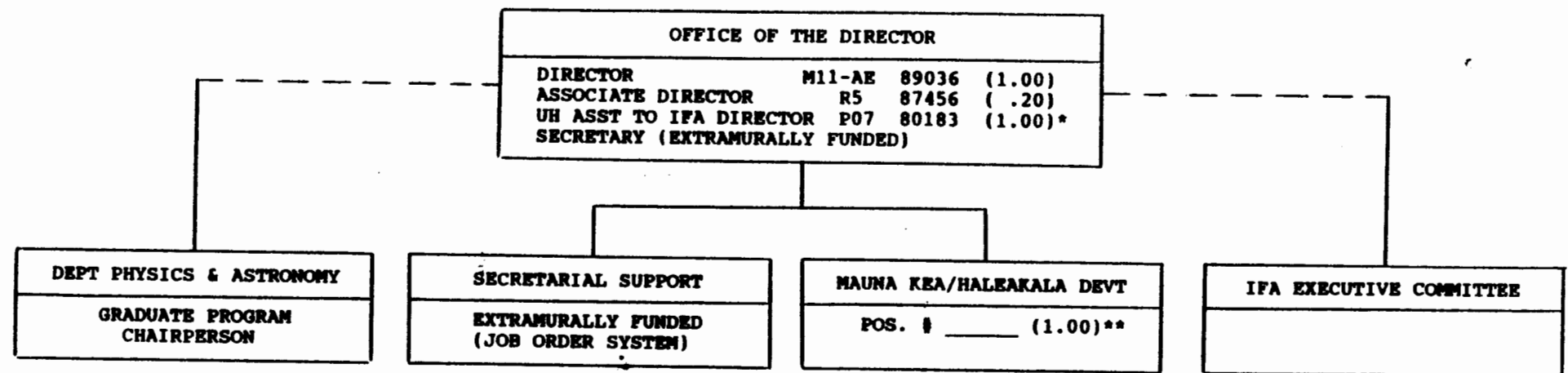
Title:

Director, Institute for Astronomy

Date:

March 18, 1988

STATE OF HAWAII  
UNIVERSITY OF HAWAII  
UNIVERSITY OF HAWAII AT MANOA  
INSTITUTE FOR ASTRONOMY  
CHART II



\* To be Reclassified to P12  
\*\* PCR

Approved by:

*Ronald B. Hall*

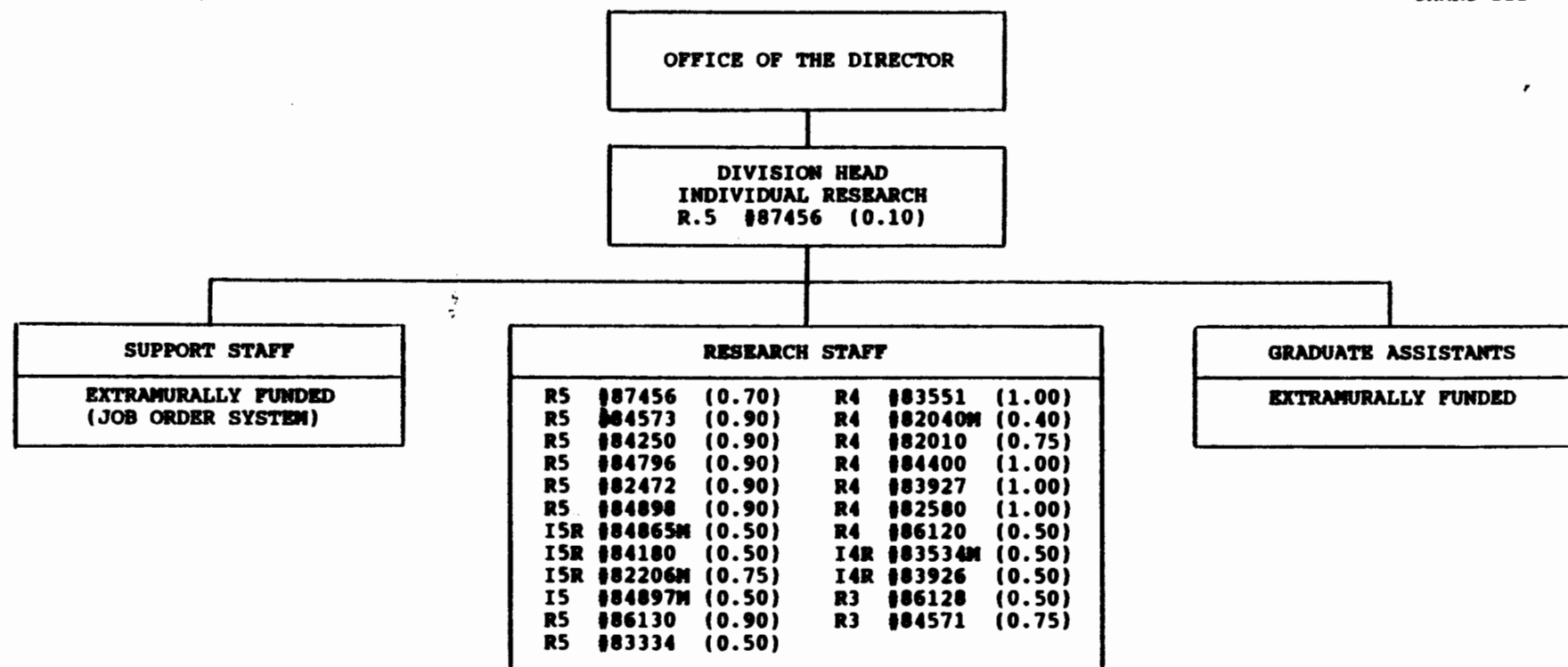
Title:

Director, Institute for Astronomy

Date:

March 18, 1988

STATE OF HAWAII  
UNIVERSITY OF HAWAII  
UNIVERSITY OF HAWAII AT MANOA  
INSTITUTE FOR ASTRONOMY  
CHART III



Approved by:

*Ronald M. Hall*

Title:

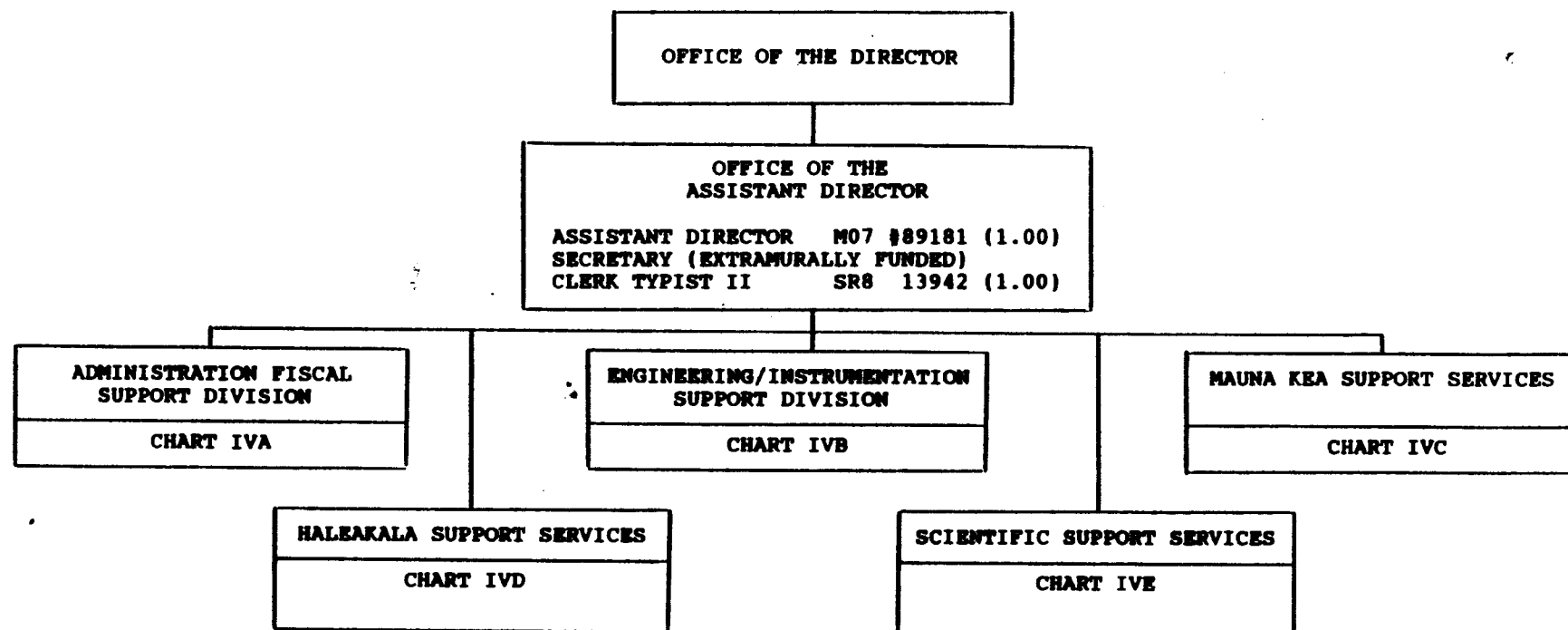
Director, Institute for Astronomy

Date:

March 18, 1988

STATE OF HAWAII  
UNIVERSITY OF HAWAII  
UNIVERSITY OF HAWAII AT MANOA

INSTITUTE FOR ASTRONOMY  
CHART IV



Approved by:

*Ronald M. Hall*

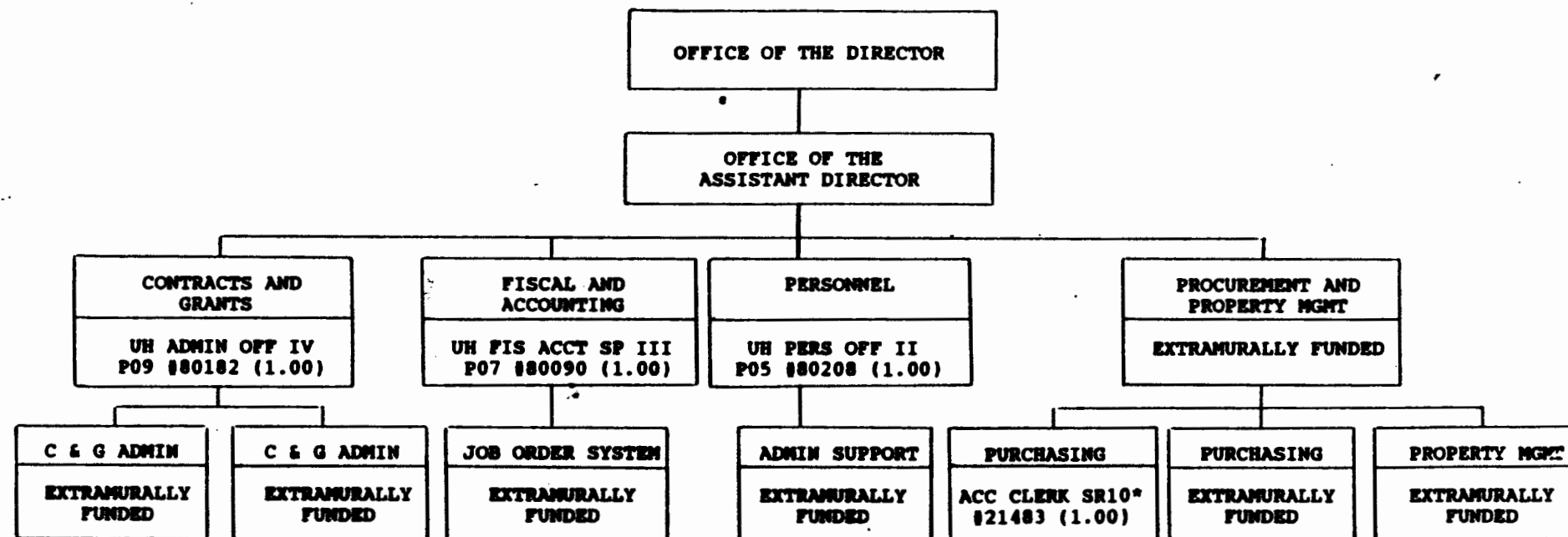
Title:

Director, Institute for Astronomy

Date:

March 18, 1988

STATE OF HAWAII  
UNIVERSITY OF HAWAII  
UNIVERSITY OF HAWAII AT MANA  
INSTITUTE FOR ASTRONOMY  
CHART IVA



\* To be Varianced to UH Fiscal & Acct Specialist I, Class Code 91530, P03

Approved by:

*Ronald B. Hall*

Title:

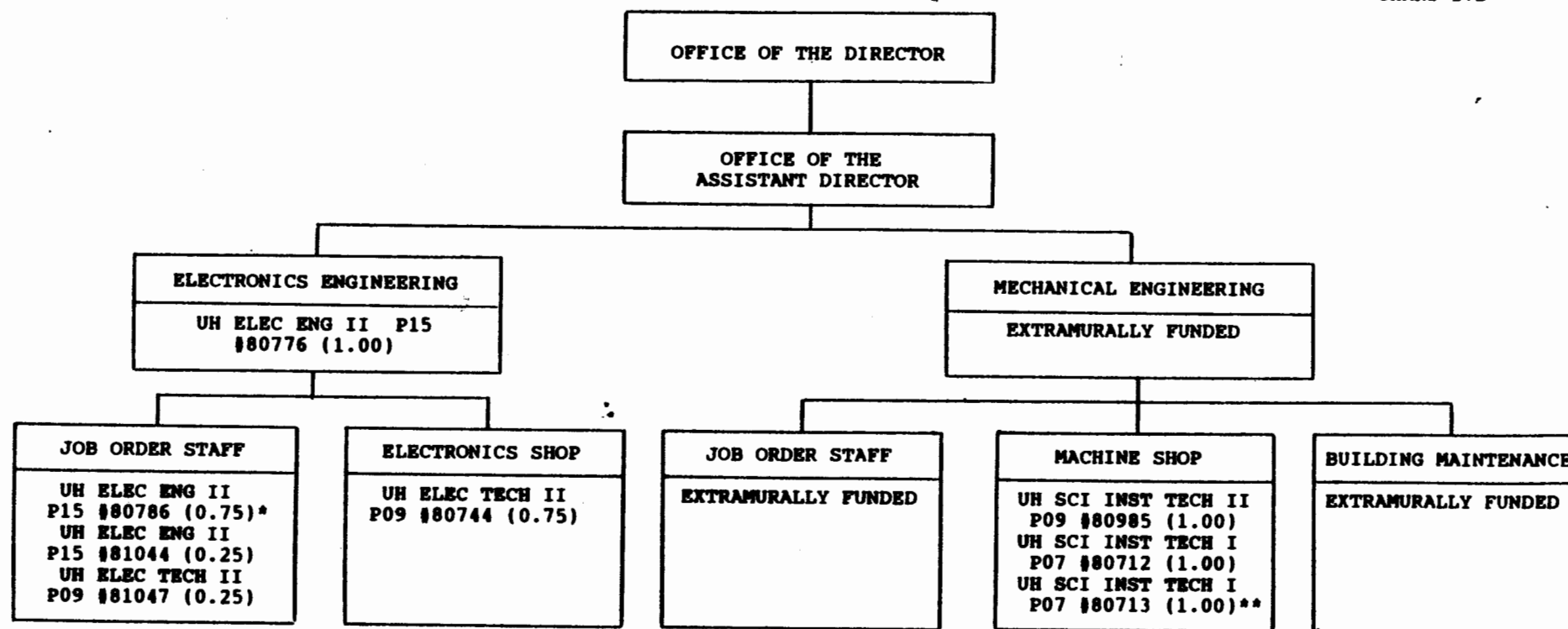
Director, Institute for Astronomy

Date:

March 18, 1988

STATE OF HAWAII  
UNIVERSITY OF HAWAII  
UNIVERSITY OF HAWAII AT MANOA

INSTITUTE FOR ASTRONOMY  
CHART IVB



\* To be Varianced from UH Mech Eng II to UH Elec Eng II; position description is being re-written  
\*\* To be Varianced

Approved by:

*Ronald M. Hall*

Title:

Director, Institute for Astronomy

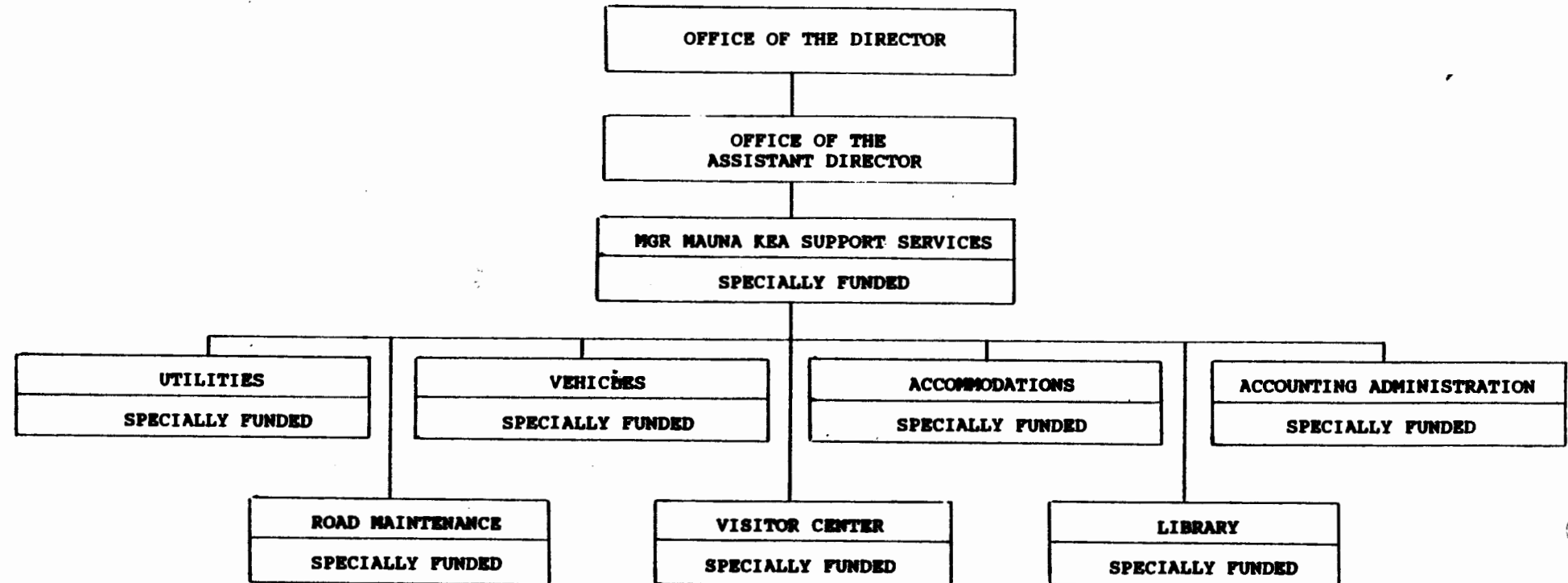
Date:

March 18, 1988

MAUNA KEA SUPPORT SERVICES

STATE OF HAWAII  
UNIVERSITY OF HAWAII  
UNIVERSITY OF HAWAII AT MANOA

INSTITUTE FOR ASTRONOMY  
CHART IVC



Approved by:

Ronald B. Hall

Title:

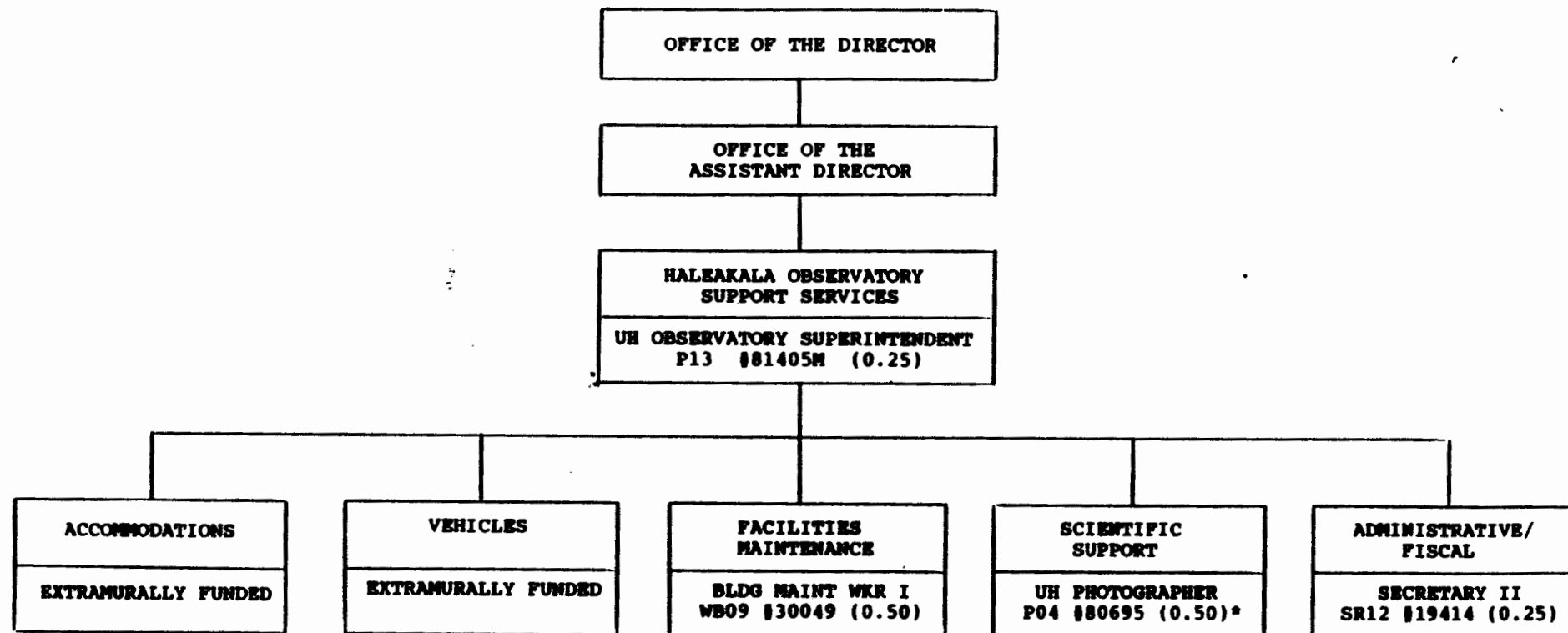
Director, Institute for Astronomy

Date:

March 18, 1988

STATE OF HAWAII  
UNIVERSITY OF HAWAII  
UNIVERSITY OF HAWAII AT MANOA

INSTITUTE FOR ASTRONOMY  
CHART IVD



\* To be Varianced

Approved by:

*Donald R. Hall*

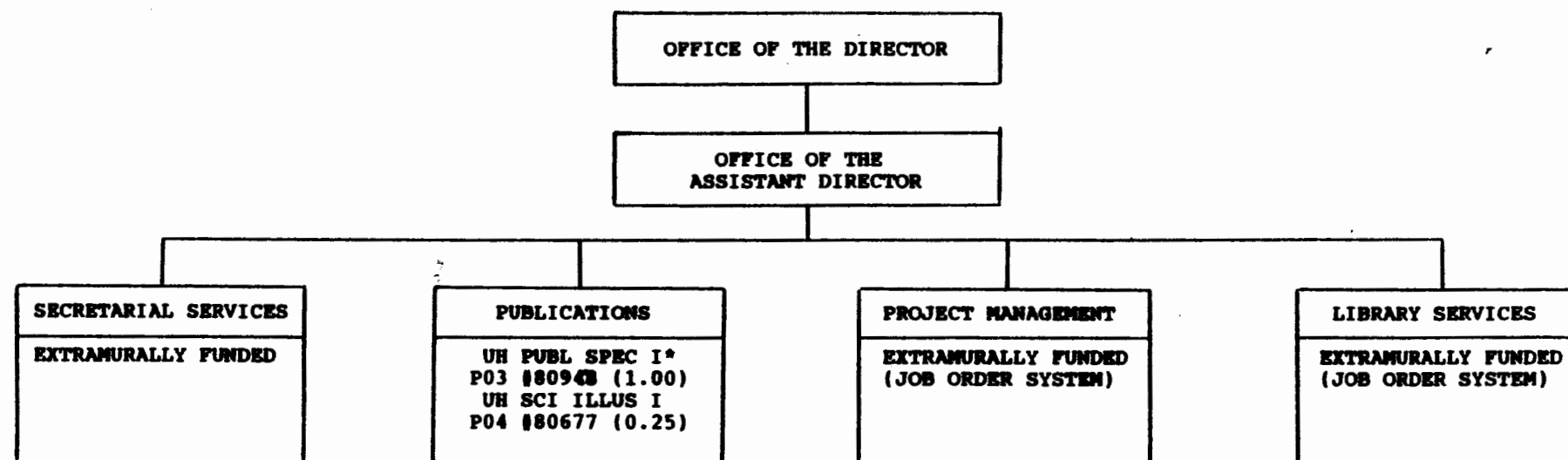
Title:

Director, Institute for Astronomy

Date:

March 18, 1988

STATE OF HAWAII  
 UNIVERSITY OF HAWAII  
 UNIVERSITY OF HAWAII AT MANOA  
 INSTITUTE FOR ASTRONOMY  
 CHART IVE

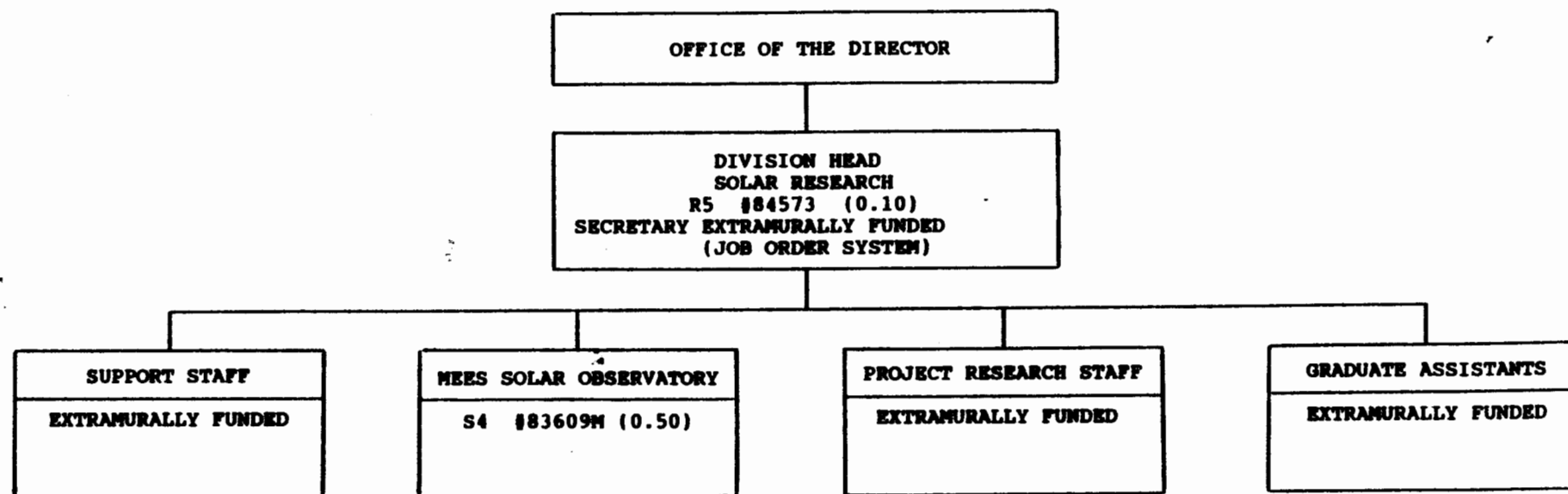


\* To be Reclassified to UH Editor II

Approved by: Ronald B. Bull  
 Title: Director, Institute for Astronomy  
 Date: March 18, 1988

STATE OF HAWAII  
UNIVERSITY OF HAWAII  
UNIVERSITY OF HAWAII AT MANOA

INSTITUTE FOR ASTRONOMY  
CHART VA



Approved by:

Donald B. Hall

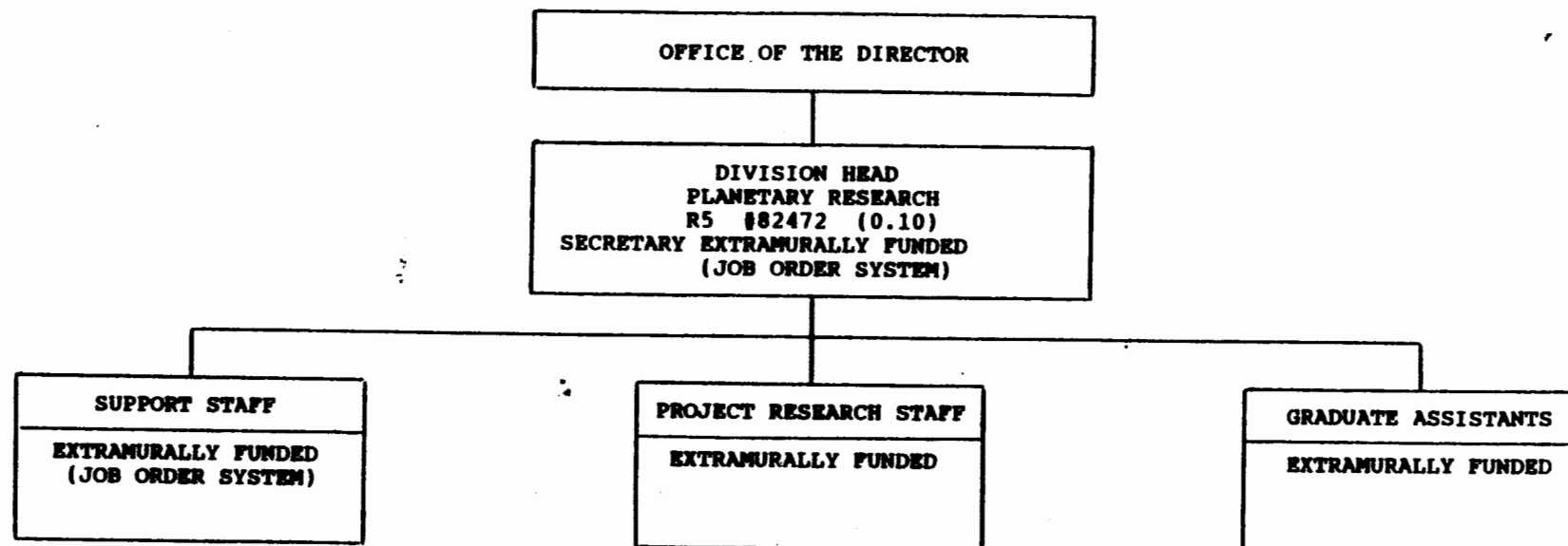
Title:

Director, Institute for Astronomy

Date:

March 18, 1988

STATE OF HAWAII  
UNIVERSITY OF HAWAII  
UNIVERSITY OF HAWAII AT MANOA  
INSTITUTE FOR ASTRONOMY  
CHART VB



Approved by:

Ronald B. Hall

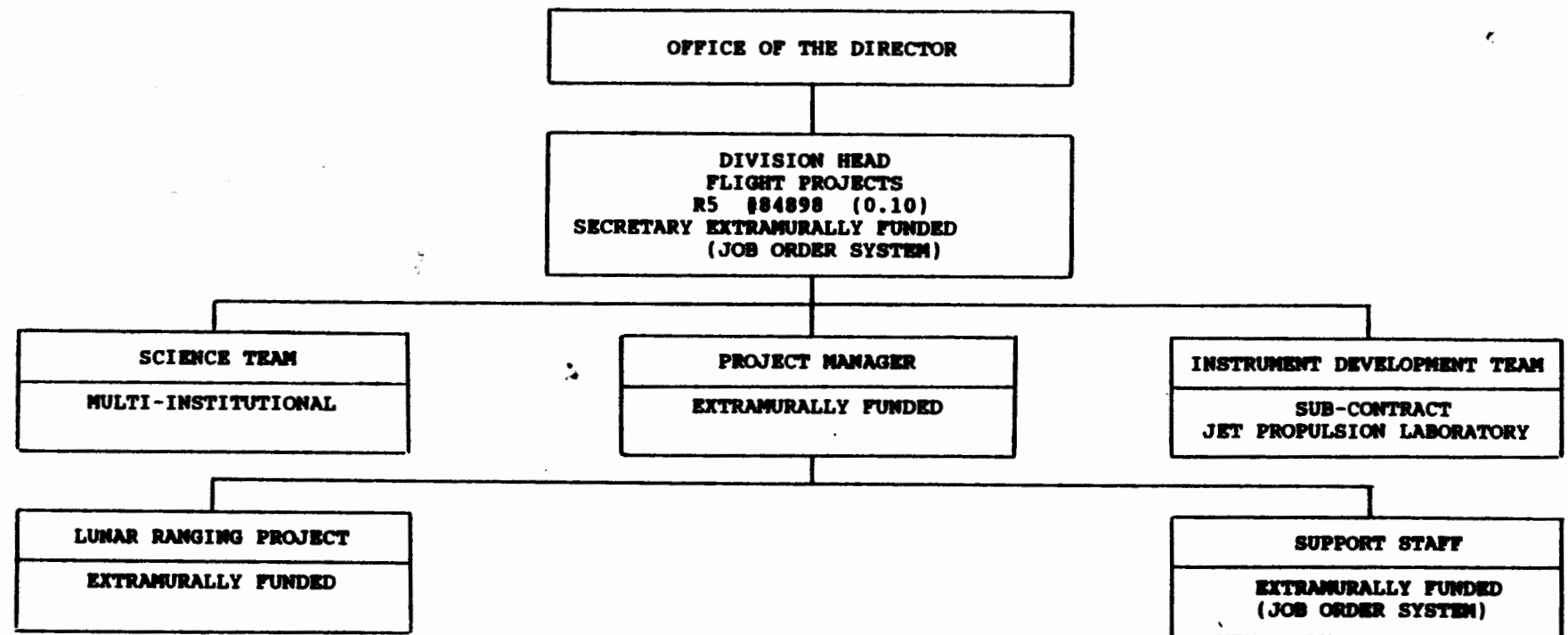
Title:

Director, Institute for Astronomy

Date:

March 18, 1988

STATE OF HAWAII  
UNIVERSITY OF HAWAII  
UNIVERSITY OF HAWAII AT MANOA  
INSTITUTE FOR ASTRONOMY  
CHART VC



Approved by:

*Ronald B. Hall*

Title:

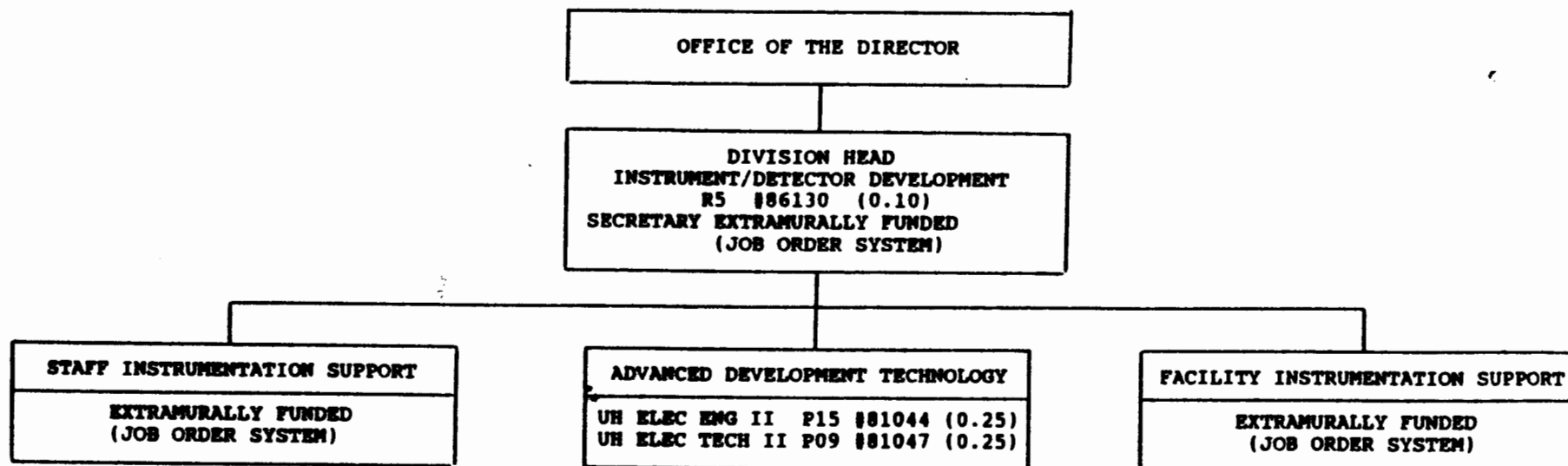
Director, Institute for Astronomy

Date:

March 18, 1988

STATE OF HAWAII  
UNIVERSITY OF HAWAII  
UNIVERSITY OF HAWAII AT MANOA

INSTITUTE FOR ASTRONOMY  
CHART VD



Approved by:

Lionel B. Hull

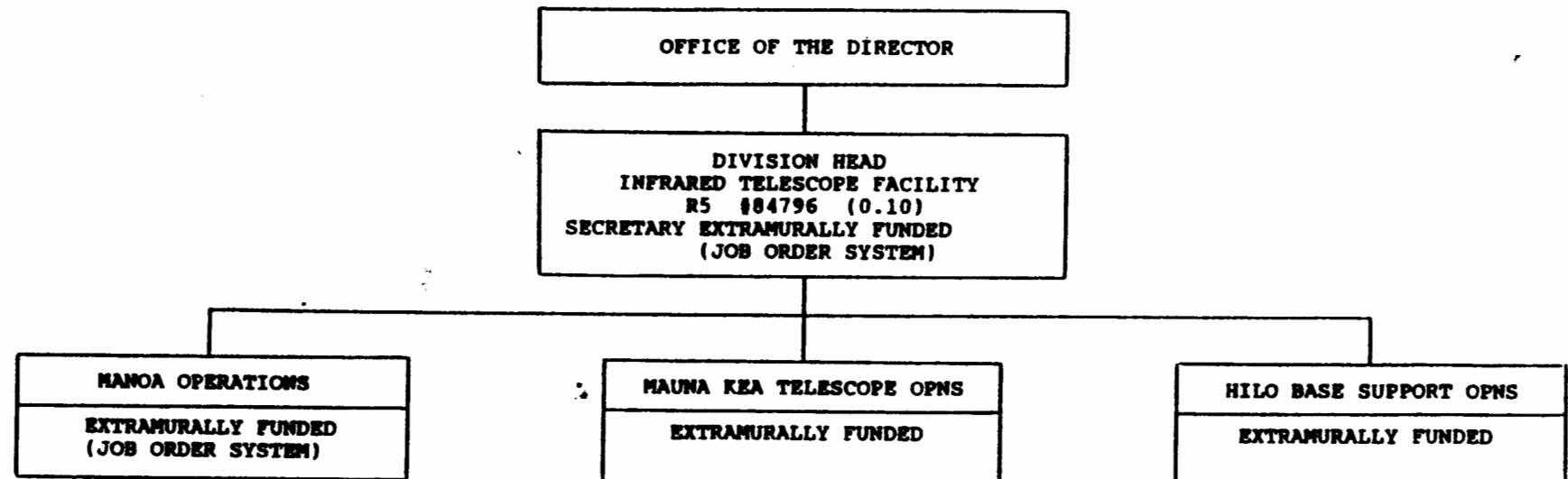
Title:

Director, Institute for Astronomy

Date:

March 18, 1988

STATE OF HAWAII  
UNIVERSITY OF HAWAII  
UNIVERSITY OF HAWAII AT MANOA  
INSTITUTE FOR ASTRONOMY  
CHART VE



Approved by:

*Ronald M. Hall*

Title:

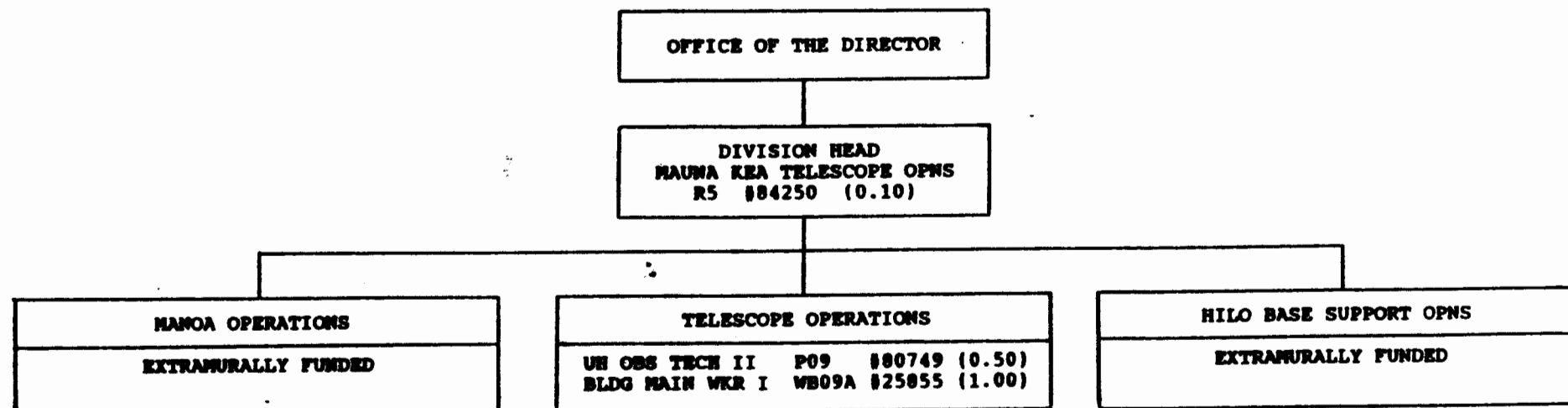
Director, Institute for Astronomy

Date:

March 18, 1988

STATE OF HAWAII  
UNIVERSITY OF HAWAII  
UNIVERSITY OF HAWAII AT MANOA

INSTITUTE FOR ASTRONOMY  
CHART VF



Approved by:

*Donald B. Hall*

Title:

Director, Institute for Astronomy

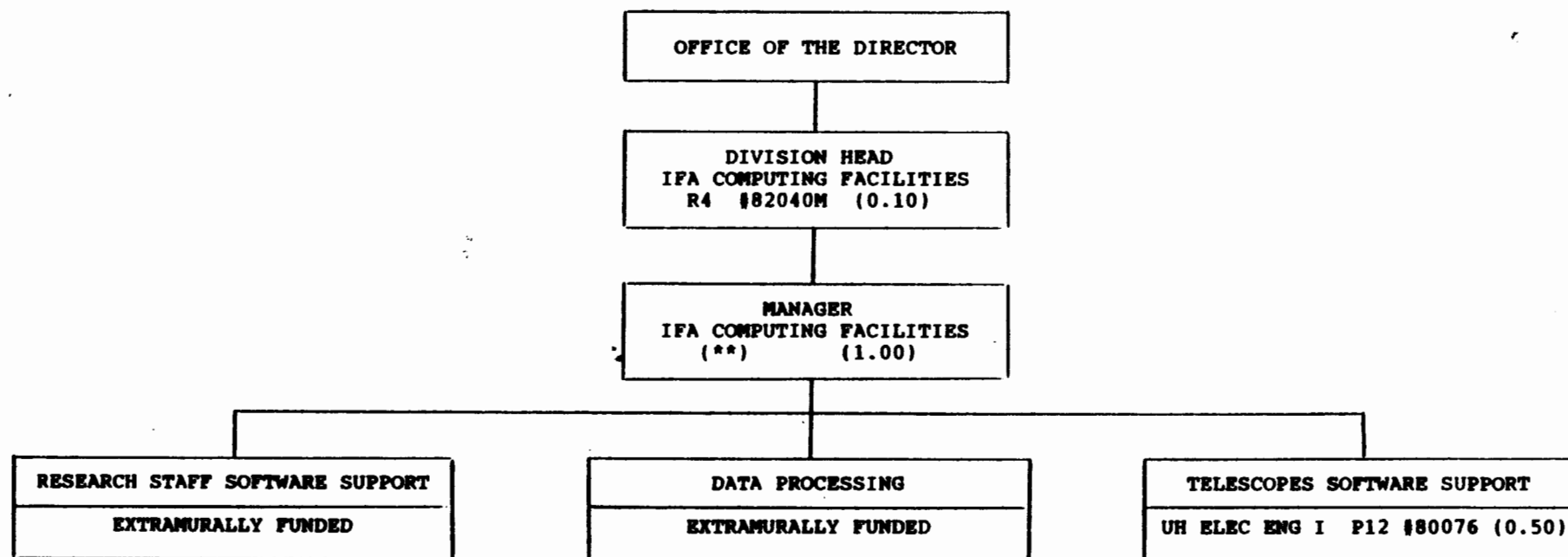
Date:

March 18, 1988

PROPOSED

STATE OF HAWAII  
UNIVERSITY OF HAWAII  
UNIVERSITY OF HAWAII AT MANOA

INSTITUTE FOR ASTRONOMY  
CHART VG



(\*\*) PCR (funded 1988-89)

Approved by:

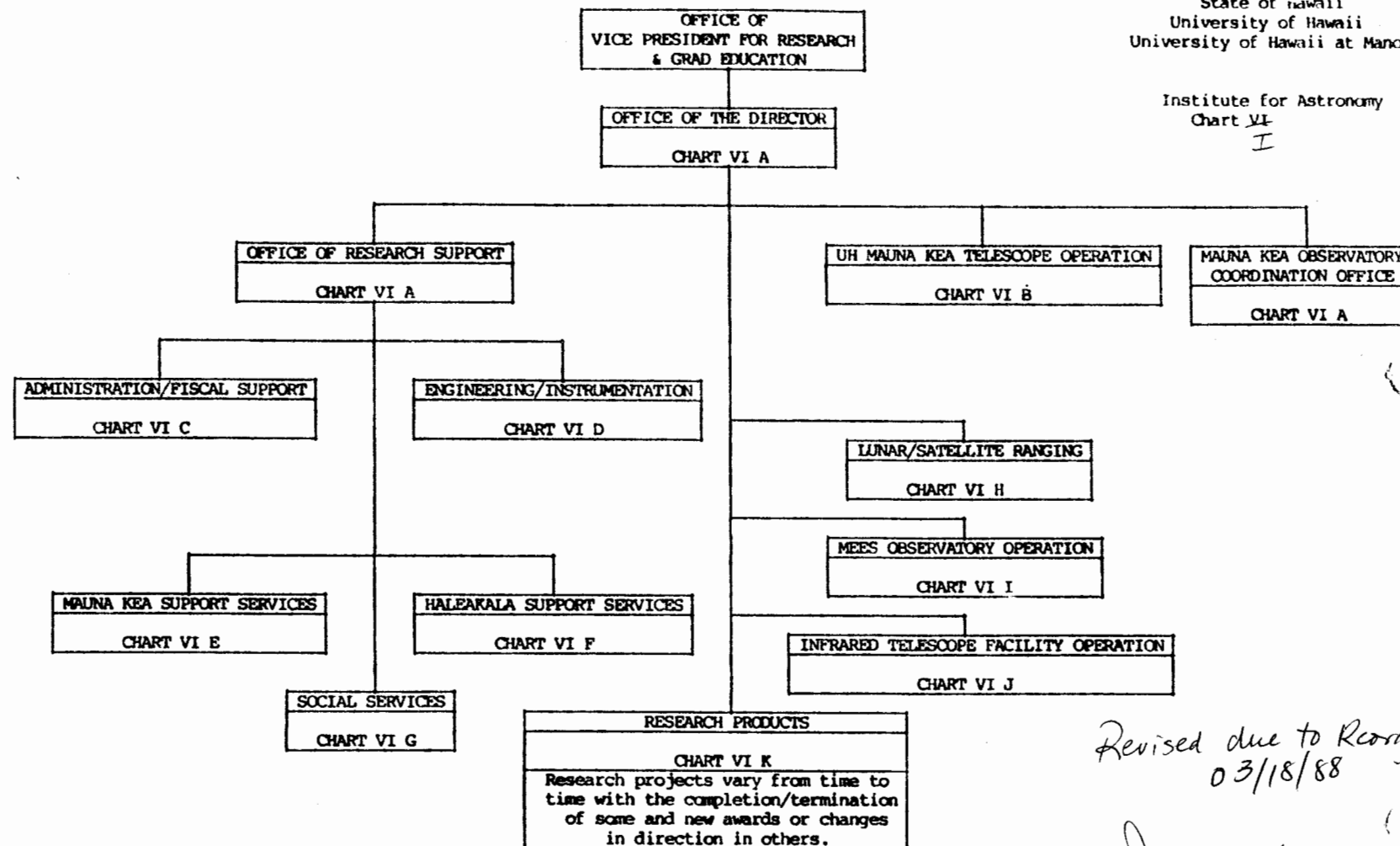
*Ronald B. Hall*

Title:

Director, Institute for Astronomy

Date:

March 18, 1988



Revised due to Rcom  
03/18/88

CHART UPDATED

DATE SEP 1976

CHART UPDATED

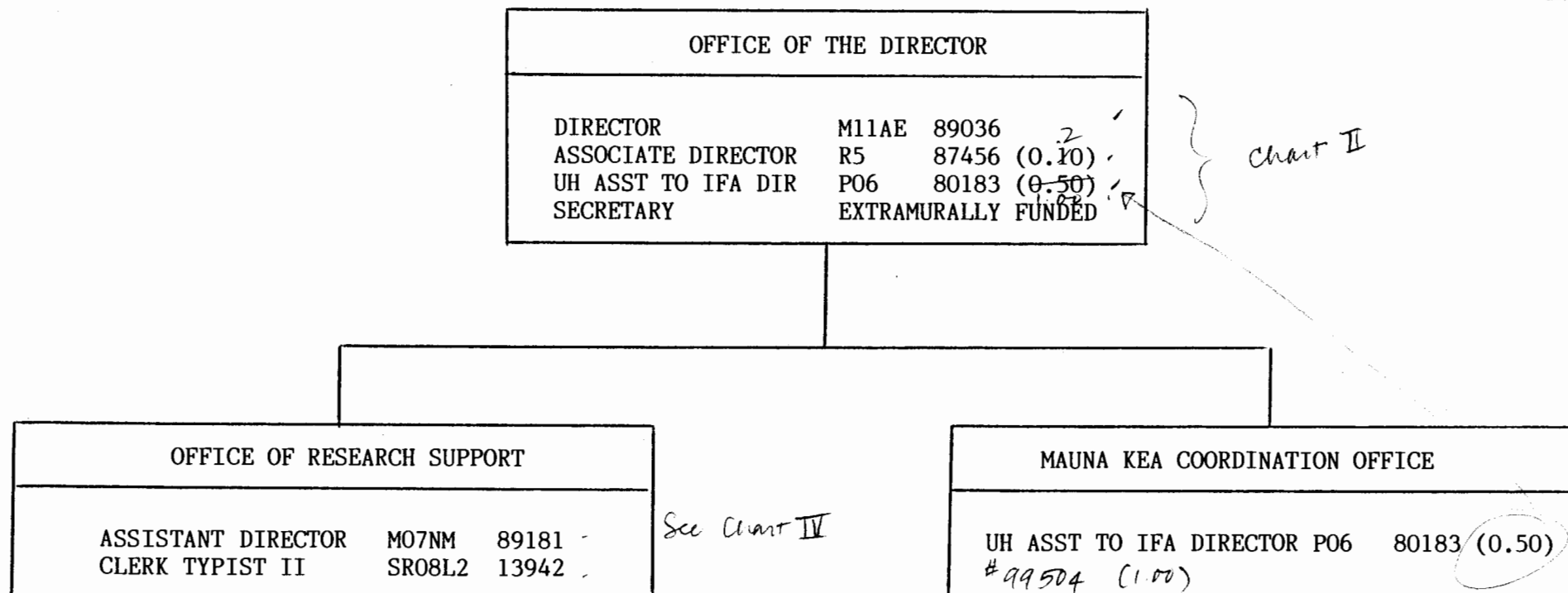
DATE OCT 1987

CHART UPDATED

DATE SEP 1986

State of Hawaii  
University of Hawaii  
University of Hawaii at Manoa

Research and Graduate Education  
Institute for Astronomy  
Chart VI-A  
II



*Revised due to reorg. 3/15/88*

CHART UPDATED

DATE OCT 1987

Research and Graduate Education

Institute for Astronomy

Chart VI B

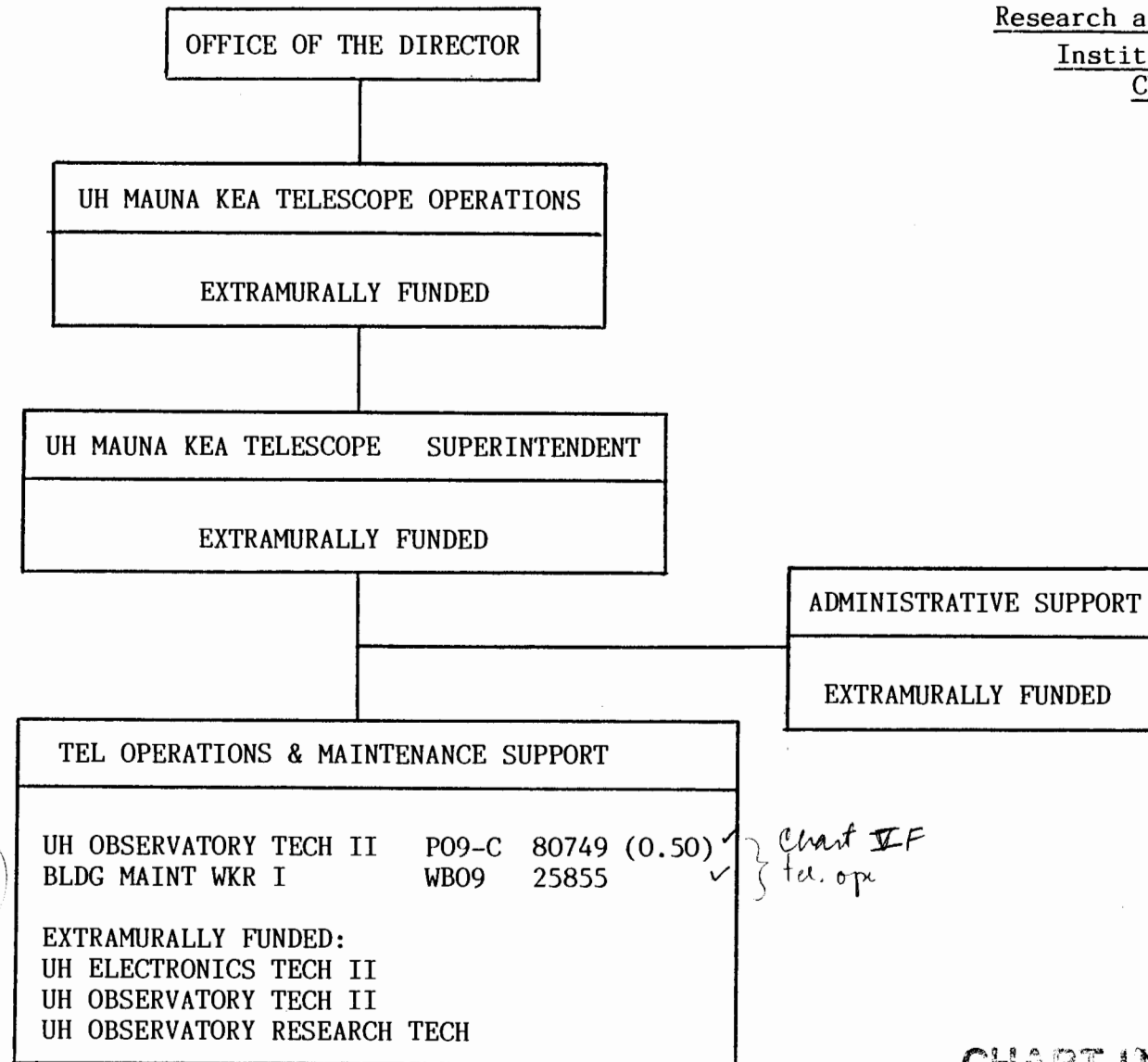


CHART UPDATED  
DATE OCT 1987

State of Hawaii  
University of Hawaii  
University of Hawaii at Manoa

Research and Graduate Education  
Institute for Astronomy  
Chart VI C

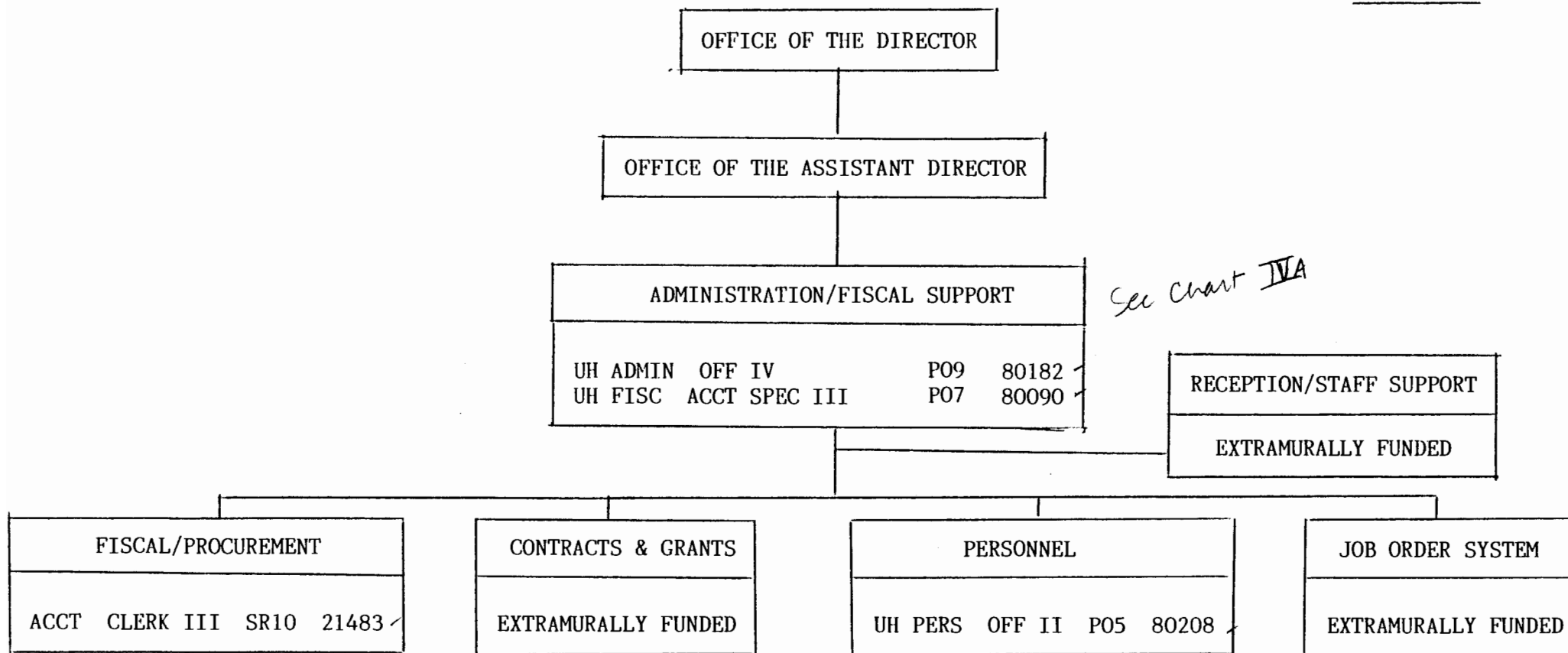


CHART UPDATED  
DATE OCT 1987

State of Hawaii  
University of Hawaii  
University of Hawaii at Manoa

Research and Graduate Education  
Institute for Astronomy  
Chart VI D

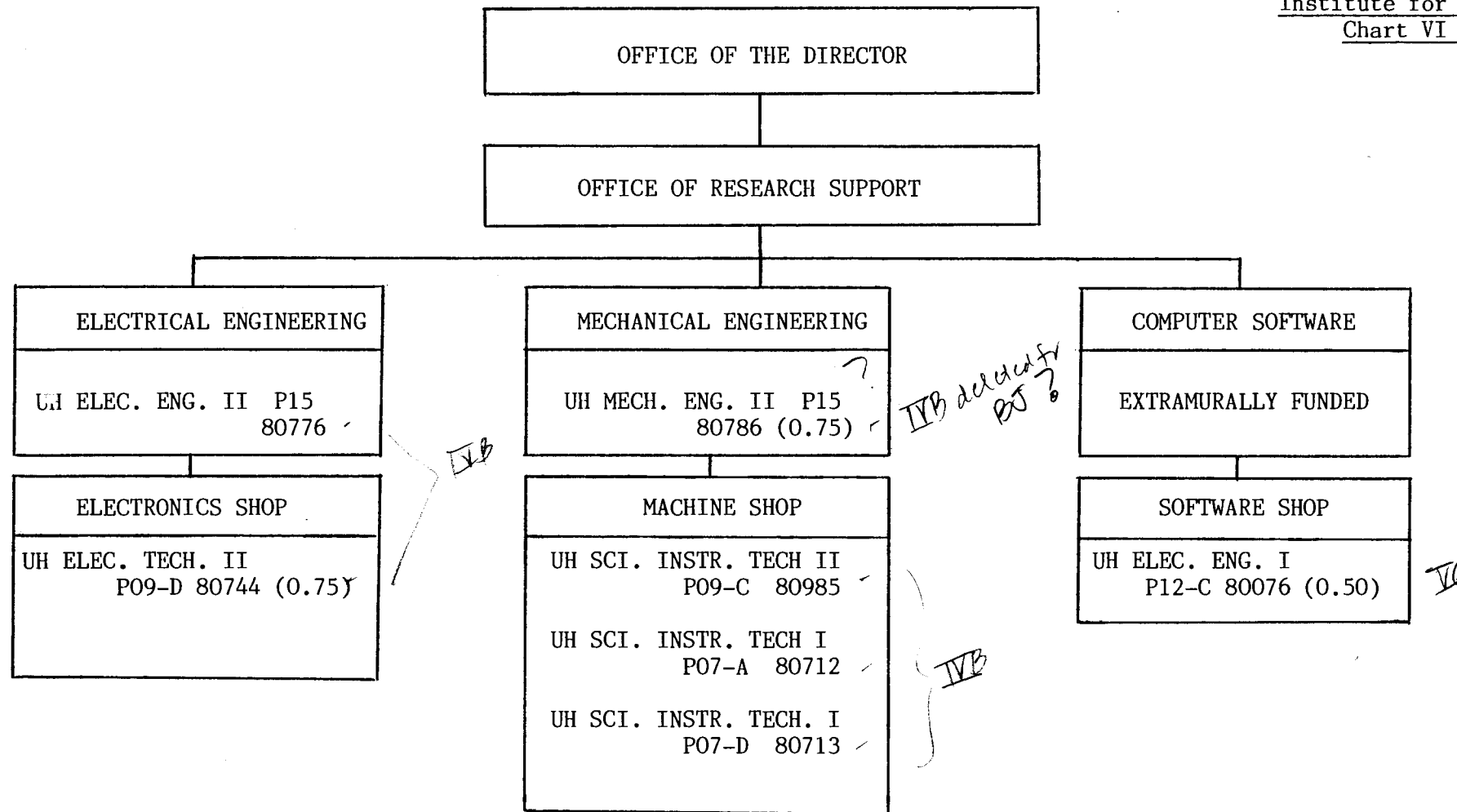
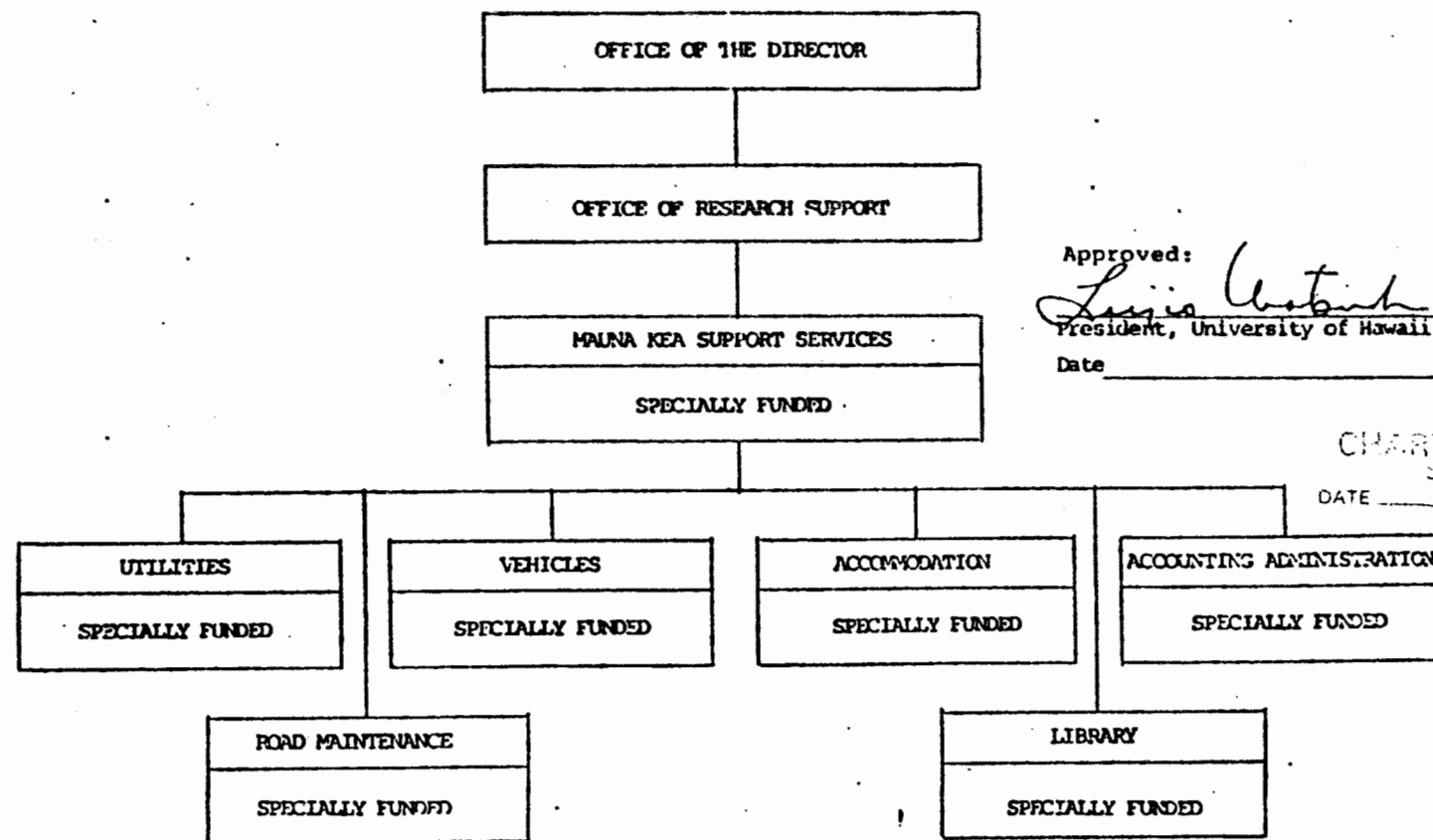


CHART UPDATED  
DATE OCT 1987

MAUNA KEA SUPPORT SERVICES

University of Hawaii  
University of Hawaii at Manoa

Organized Research  
Institute for Astronomy  
Chart VI E



Approved:

*Luisa Ustun*  
President, University of Hawaii

Date \_\_\_\_\_

CHART UPDATED  
SEP 1986

DATE \_\_\_\_\_

CHART UPDATED

DATE ~~OCT~~ 1987

CHART UPDATED

DATE ~~SEP~~ 1986

State of Hawaii  
University of Hawaii  
University of Hawaii at Manoa

Research and Graduate Education  
Institute for Astronomy  
Chart VI F

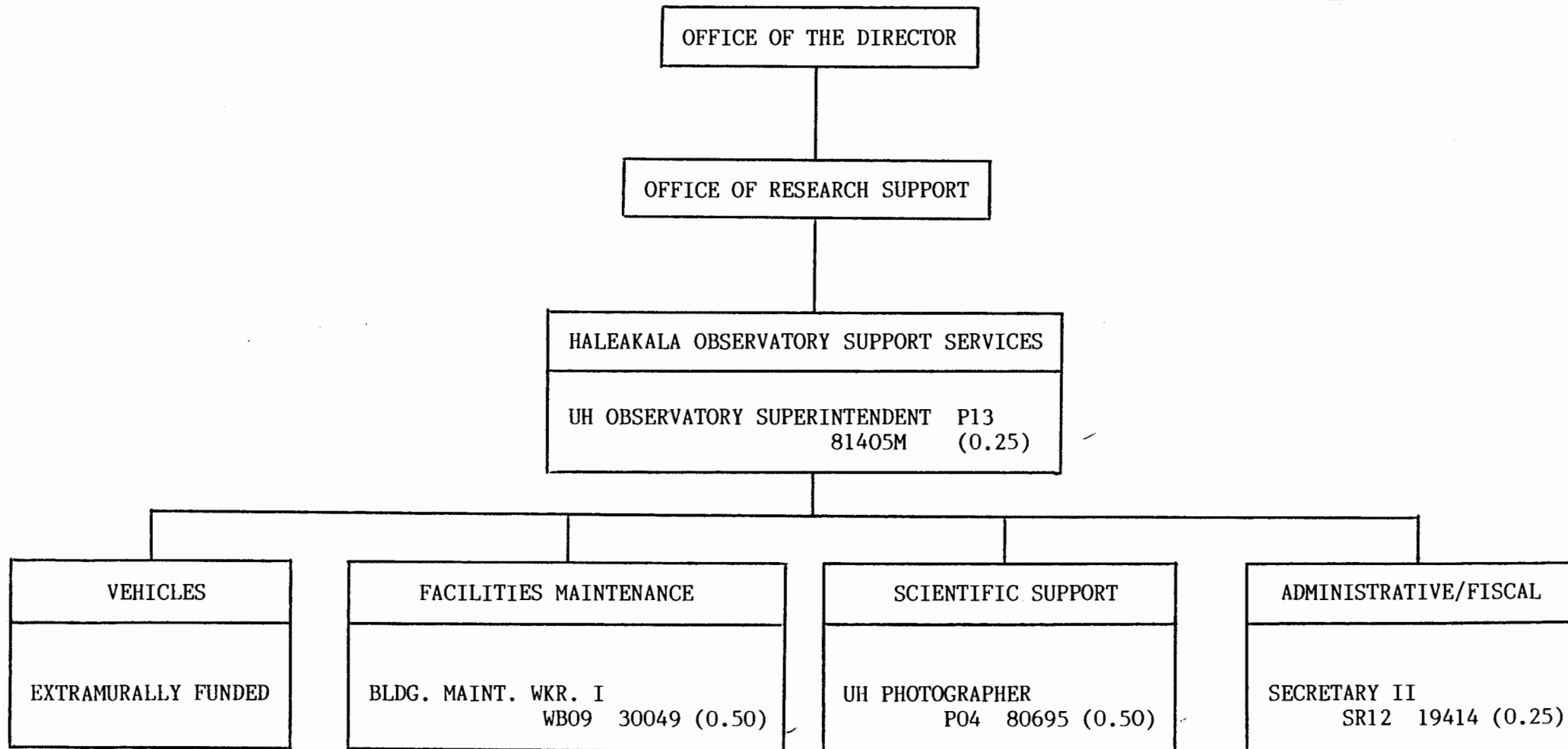


CHART UPDATED  
DATE OCT 1987

State of Hawaii  
University of Hawaii  
University of Hawaii at Manoa

Research and Graduate Education  
Institute for Astronomy  
Chart VI G

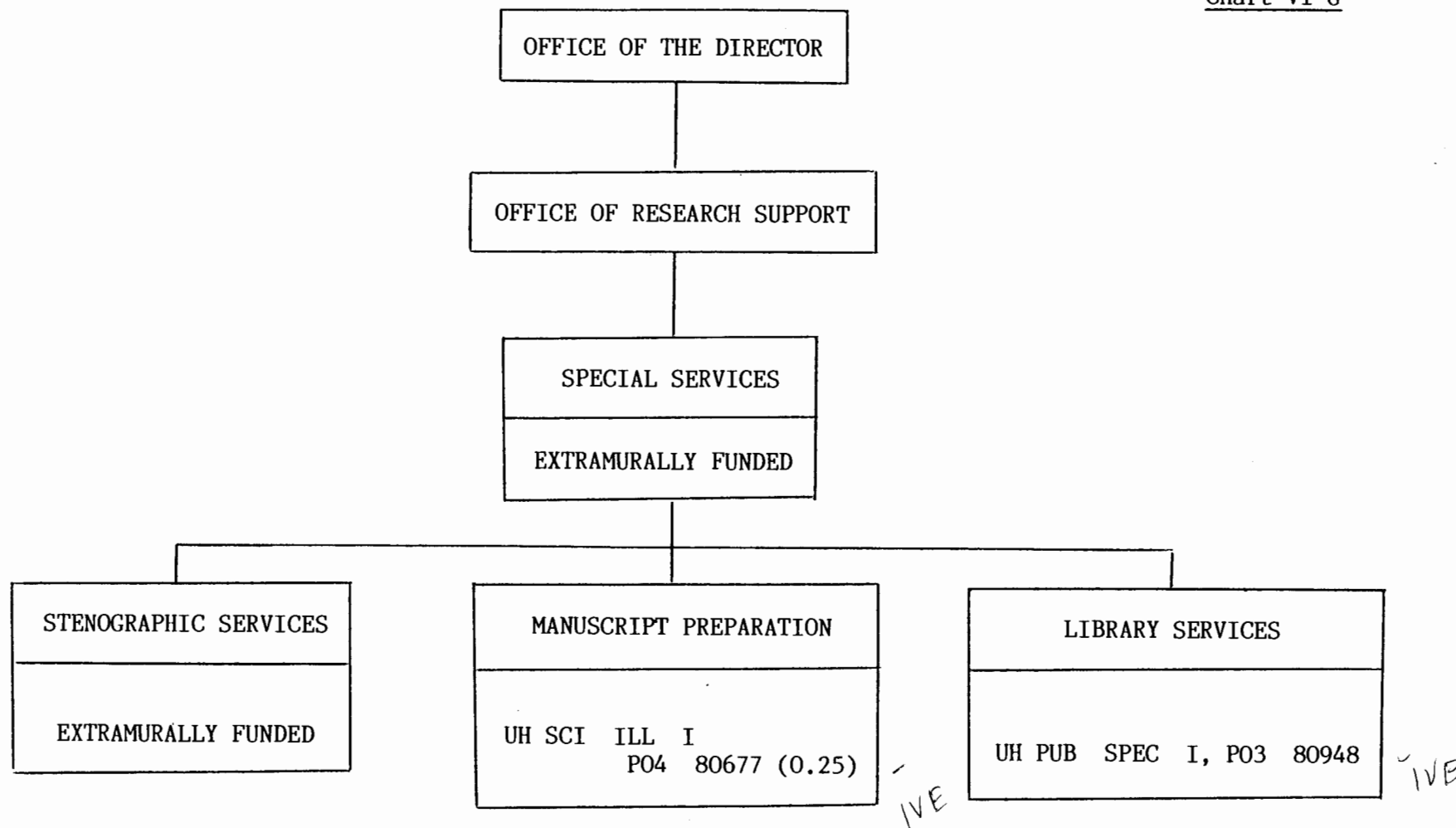
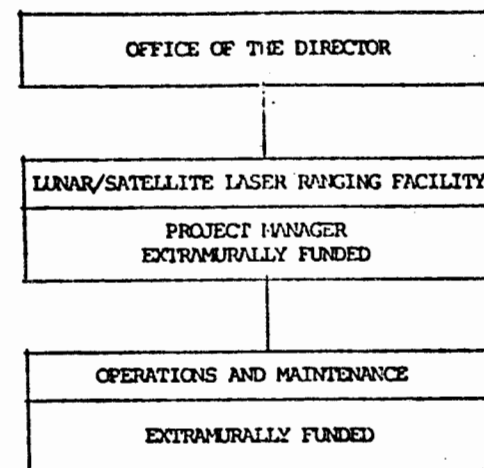


CHART UPDATED  
DATE OCT 1987

1.25

State of Hawaii  
University of Hawaii  
University of Hawaii at Manoa

Organized Research  
Institute for Astronomy  
Chart VI II



**CHART UPDATED**

DATE \_\_\_\_\_

**CHART UPDATED**

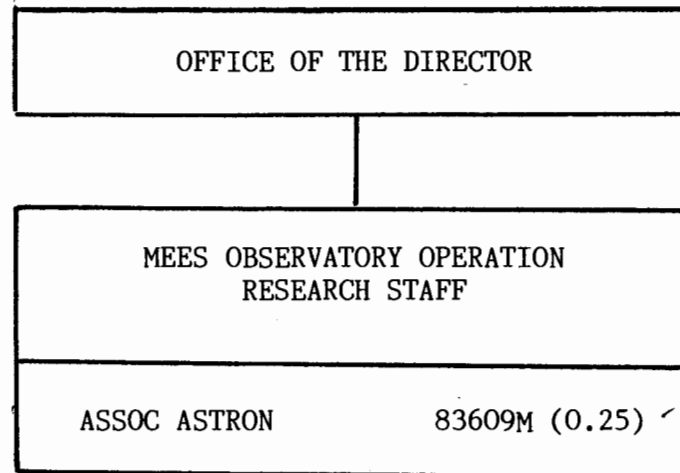
DATE OCT 1987

**CHART UPDATED**

DATE SEP 1986

State of Hawaii  
University of Hawaii  
University of Hawaii at Manoa

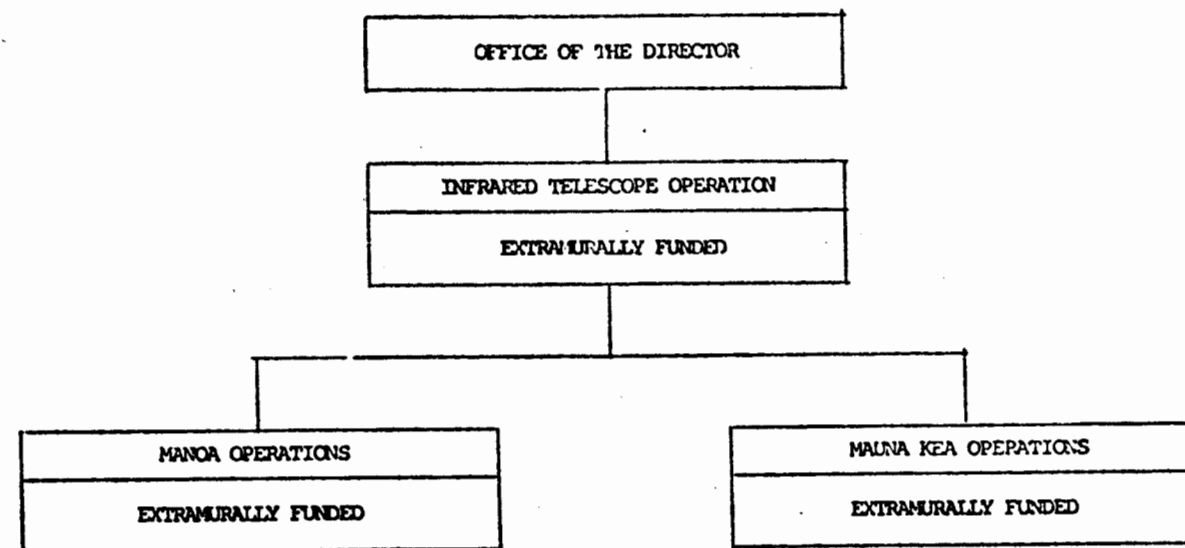
Research and Graduate Education  
Institute for Astronomy  
Chart VI I



~~CHART UPDATED~~  
DATE ~~OCT~~ 1987

State of Hawaii  
University of Hawaii  
University of Hawaii at Manoa

Organized Research  
Institute for Astronomy  
Chart VI J



**CHART UPDATED**

DATE \_\_\_\_\_

**CHART UPDATED**

DATE OCT 1987

~~CHART UPDATED~~  
DATE SEP 1986

State of Hawaii  
University of Hawaii  
University of Hawaii at Manoa

Research and Graduate Education  
Institute for Astronomy  
Chart VI K

OFFICE OF THE DIRECTOR	
RESEARCH PROJECTS	
Research projects vary from time to time with the completion/termination of some and new awards or changes in direction of others.	
RESEARCH STAFF	
<div style="display: flex; justify-content: space-between;"> <div style="width: 45%;"> <p><u>Fully Funded:</u></p> <p>10%, chart VF</p> <p>84250.90 82580 -</p> <p>84400 - 82472.90</p> <p>83551 - 84571.75</p> <p>10%, chart VF - 84796.90 84573.90</p> <p><u>Partially Funded:</u></p> <p>84865M (0.50) - 83334M (0.50) -</p> <p>82206M (0.75) - 83609M (0.25) -</p> <p>84897M (0.50) - 83927M (0.50) -</p> <p>84180 (0.50) - 83058M (0.50) -</p> <p>82010M (0.75) - 83534M (0.50) -</p> <p>82040M (0.50) - 84898 (0.75) -</p> <p>83926M (0.50) - 86120M (0.50) -</p> <p>87456 (0.90) -</p> </div> <div style="width: 50%;"> <p>BJ = .50</p> <p>other 10% - chart VB</p> <p>other 10% - chart VA</p> <p>BJ = .40</p> <p>.50, chart VA</p> <p>50</p> <p>10%, chart VC</p> <p>20%, chart II</p> </div> </div>	

10%, chart VG

.50, chart VA

50

10%, chart VC

20%, chart II

BJ = .75

CHART UPDATED

DATE OCT 1987