

STATE OF HAWAII  
UNIVERSITY OF HAWAII  
UNIVERSITY OF HAWAII AT MANOA

RESEARCH & GRADUATE EDUCATION  
HAWAII INSTITUTE OF GEOPHYSICS

POSITION ORGANIZATION  
CHART IVa

Office of the Director  
Director, M11-AE (#89123) 69 X 7X  
Associate Director, RS (#83678)  
UH Admin Off I, P01 (#80956) X  
Secretary IV, SR-16 (#10938) X  
Secretary III, SR-14 (#14353) X  
Clerk-Steno II, SR-9 (#32636)

Office of the Assistant Director  
UH Admin Off VII, P15 (#80207) X  
UH Personnel Off I, P01 (#80943) X  
II 5

Fiscal Office  
UH Admin Off IV, P09 (#80199) X  
Account Clerk III, SR-10 (#15729) X  
UH A-D II, P5 80958

Publications Facility  
UH Editor IV, P09 (#80098)  
UH Graphic Artist III, P08 (#80689)  
UH Publ Spl I, P01 (#81140)  
Editor II, 5

Library  
UH Educ Spl II, P06 (#80519)

Engineering Support Facility  
UH Elec Eng II, P15 (#80741) .50  
UH Elec Eng I, P12 (#80769)  
UH Elec Eng I, P-2 (#80406) .50  
UH Elec Eng I, P12 TBE 2 .50  
UH Mech Eng I, P12 (#80770) .50  
UH Elec Tech II, P09 (#80995) .50  
UH Scien Inst Tech II, P09 (#80717)  
UH Comm Supv, P08 (#80752)  
Eng Lab Tech, WB-13 (#15505)  
UH El. Tech II, P9 80334 .50

University Marine Center  
Supported by RCUH personnel

Research Computing Facility  
Supported by RCUH personnel

Analytical Support Facility  
Supported by personnel funded through revolving funds

Approved by:

*Charles E. Helley*

Title:

Director, Hawaii Institute of Geophysics

Date:

May 18, 1987

CHART UPDATED

DATE OCT 1987

STATE OF HAWAII  
UNIVERSITY OF HAWAII  
UNIVERSITY OF HAWAII AT MANOA  
RESEARCH & GRADUATE EDUCATION  
HAWAII INSTITUTE OF GEOPHYSICS

POSITION ORGANIZATION  
CHART IVb

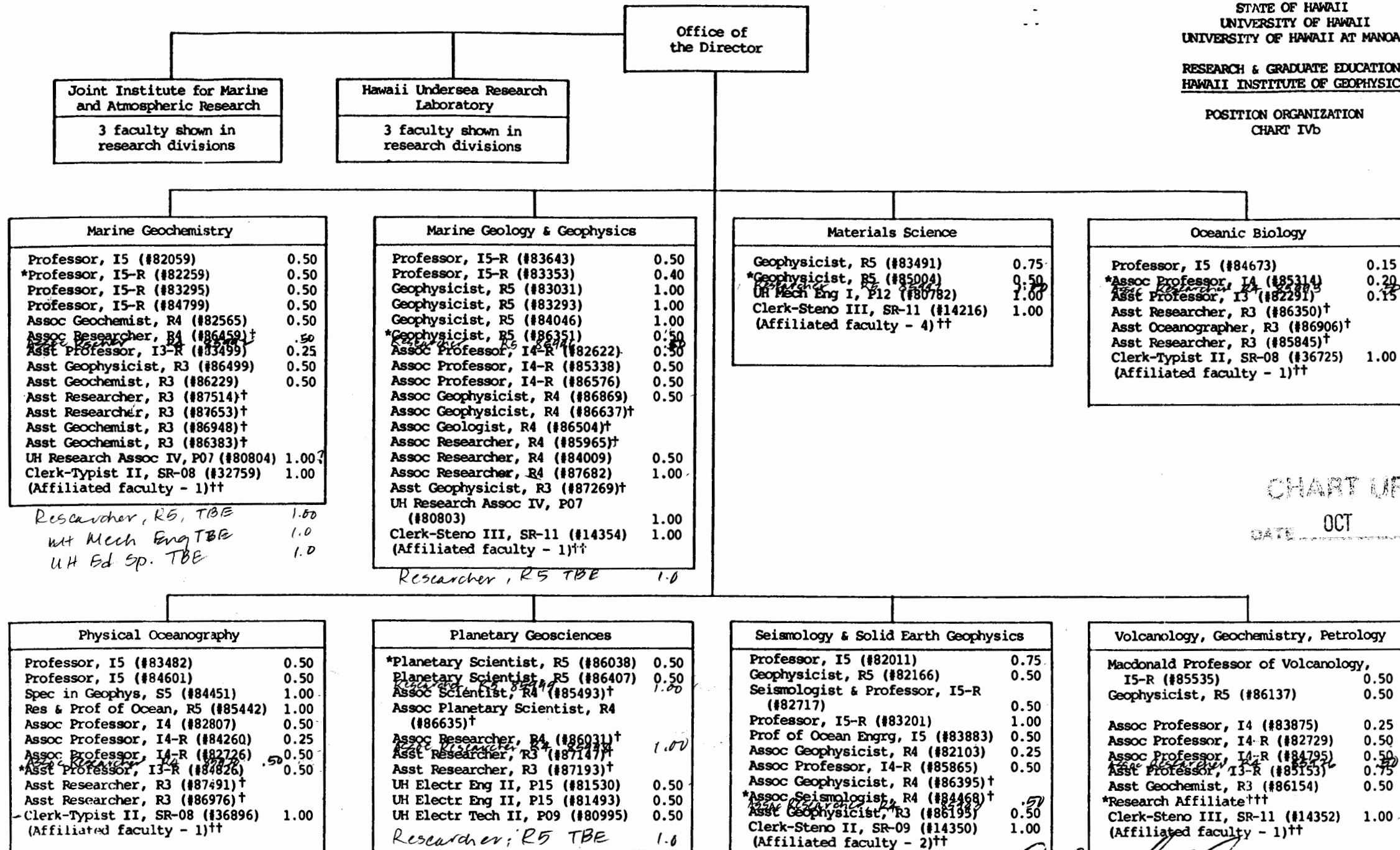


CHART UPDATED  
DATE OCT 1987

\*Indicates current division chairman  
†Researcher supported from extramural funds  
††Researcher for whom HIG provides monetary, administrative or facilities support  
†††Division chairman is currently regular faculty member of Department of Chemistry

Approved by:

Title:

Date:

*Charles H. Clay*  
Director, Hawaii Institute of  
Geophysics  
May 18, 1987

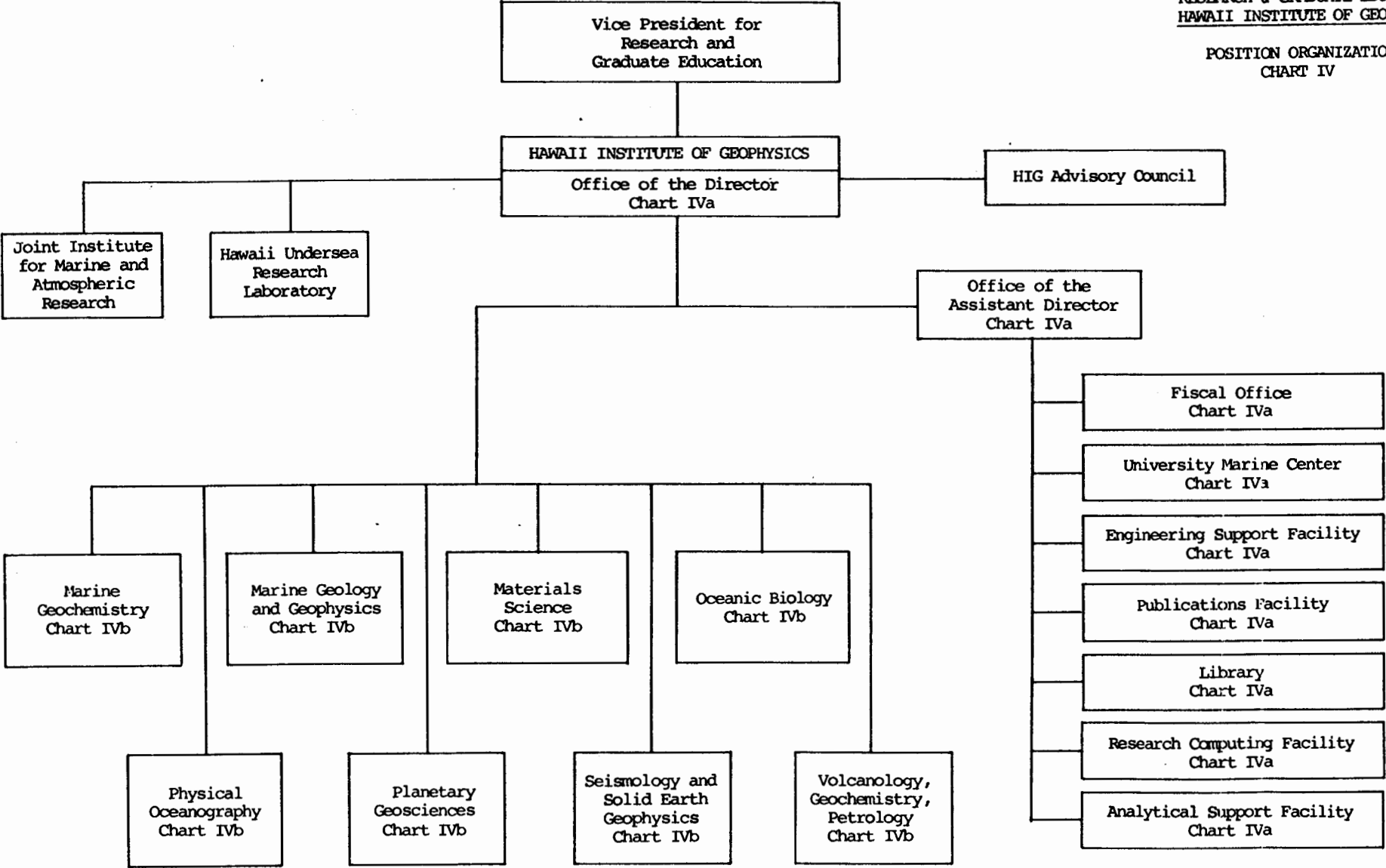



CHART UPDATED  
DATE OCT 1987

Approved by:   
Title: Director, Hawaii Institute of Geophysics  
Date: May 18, 1987