

UNIVERSITY OF HAWAII
CHANCELLOR FOR COMMUNITY COLLEGES

POSITION ORGANIZATION CHART

CHART I

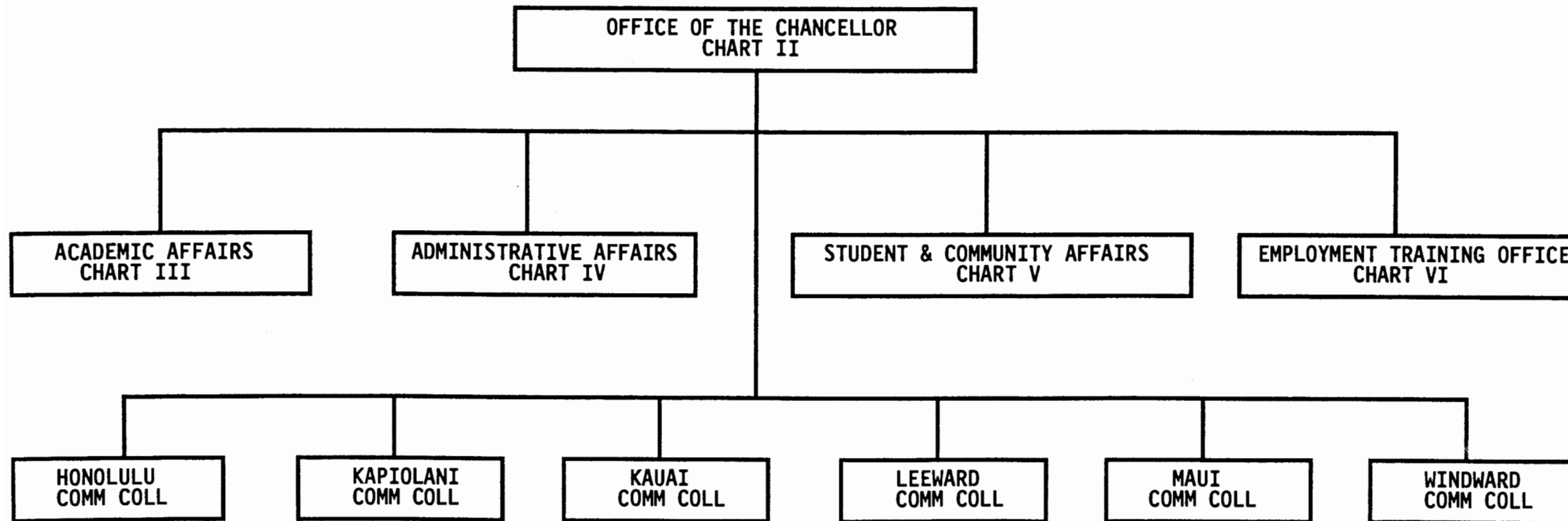


CHART UPDATED

DATE SEP 1988

STATE OF HAWAII
UNIVERSITY OF HAWAII
COMMUNITY COLLEGES
CHANCELLOR'S OFFICE

POSITION ORGANIZATION CHART
CHART II

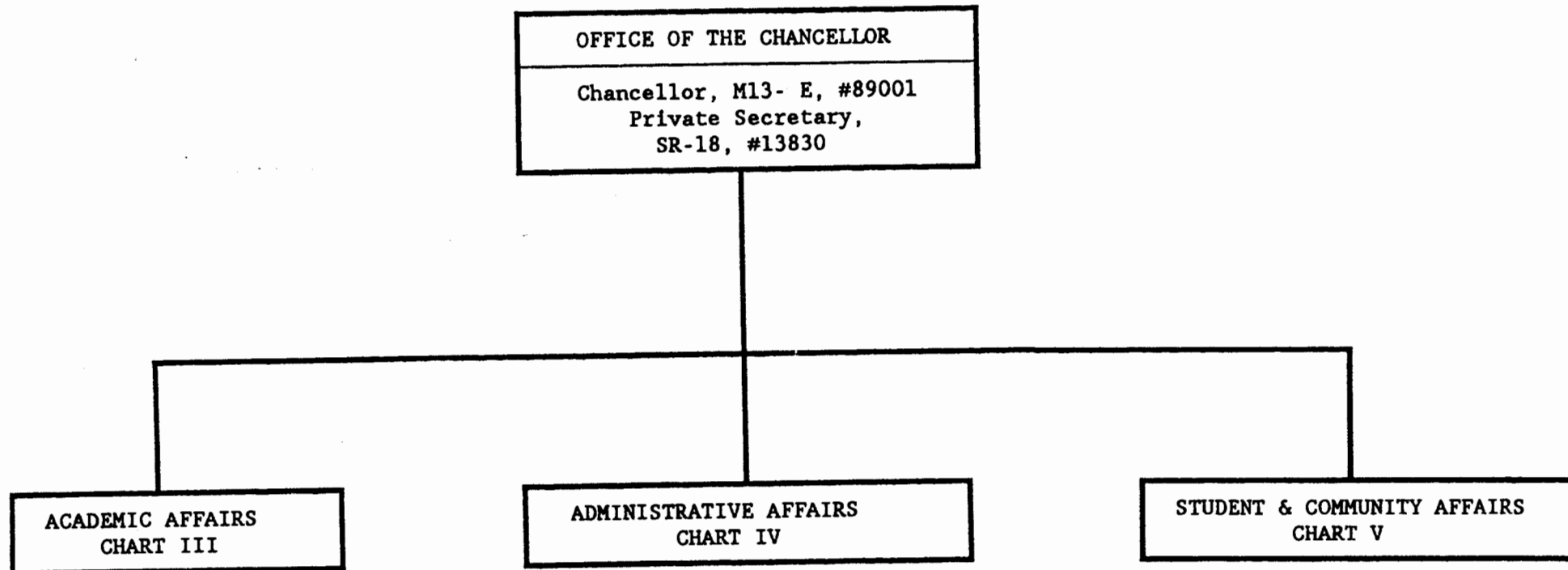


CHART UPDATED

DATE SEP 1988

STATE OF HAWAII
UNIVERSITY OF HAWAII
COMMUNITY COLLEGES
CHANCELLOR'S OFFICE
POSITION ORGANIZATION CHART
CHART III

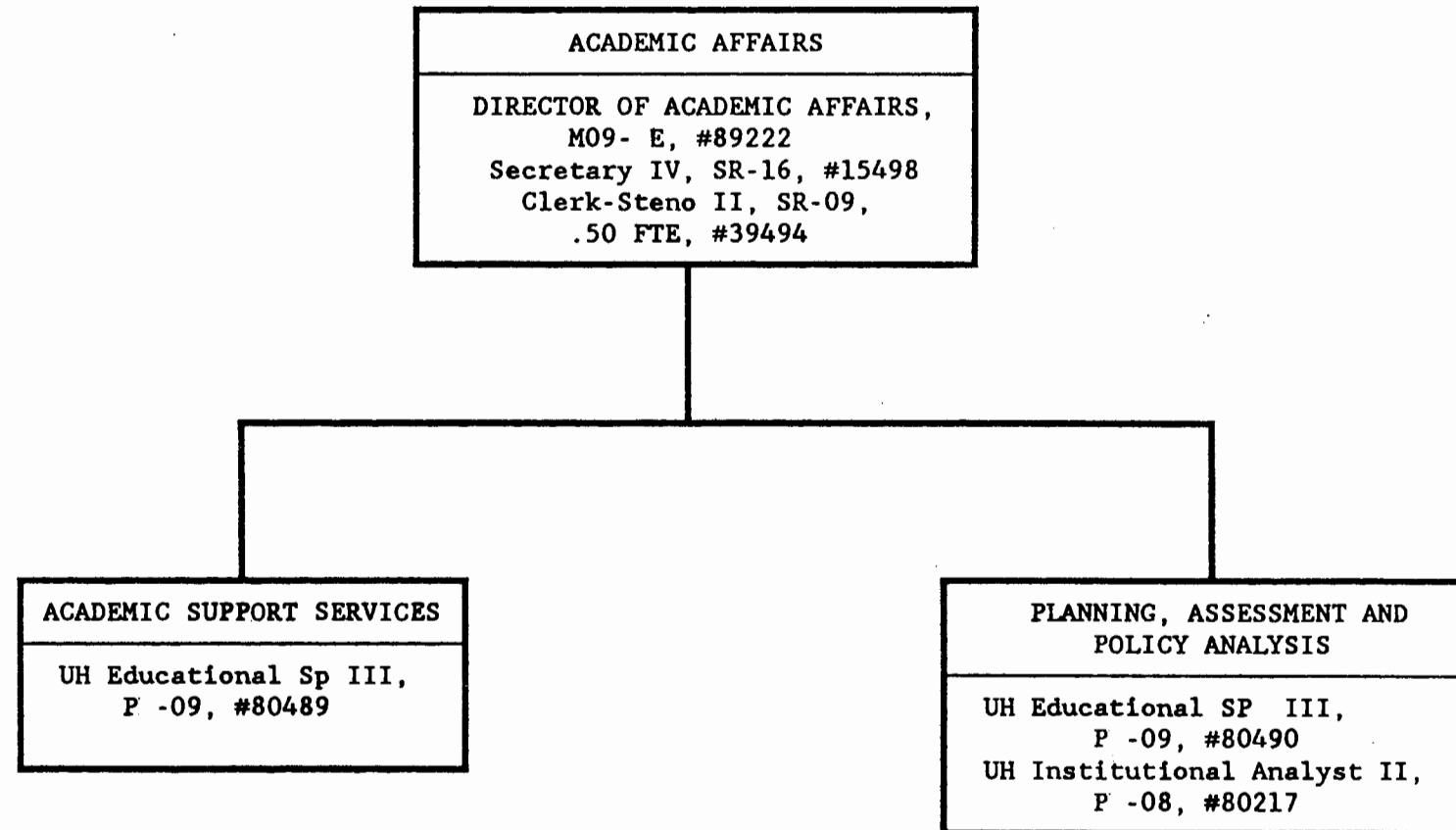


CHART UPDATED

DATE SEP 1988

STATE OF HAWAII
UNIVERSITY OF HAWAII
COMMUNITY COLLEGES
CHANCELLOR'S OFFICE

POSITION ORGANIZATION CHART
CHART IV

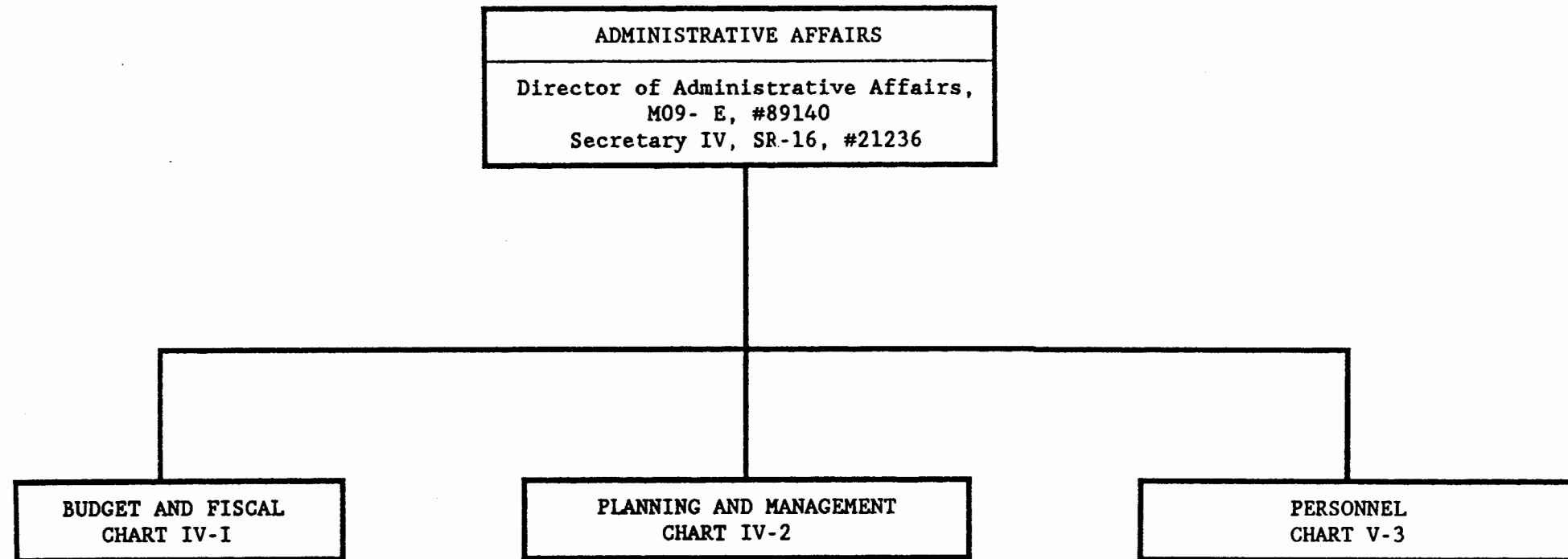


CHART UPDATED
DATE SEP 1988

STATE OF HAWAII
UNIVERSITY OF HAWAII
COMMUNITY COLLEGES
CHANCELLOR'S OFFICE

POSITION ORGANIZATION CHART
CHART IV-I

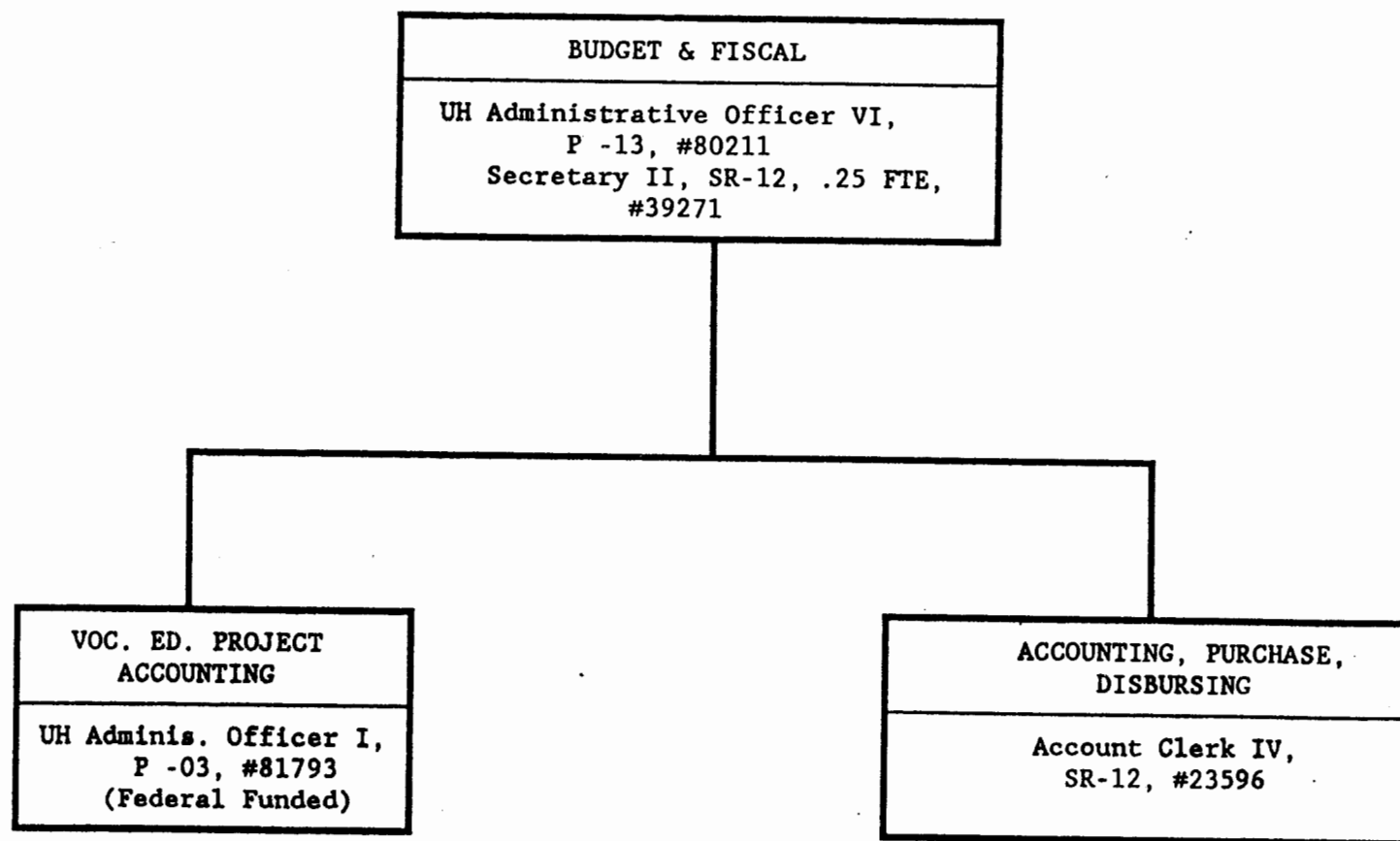
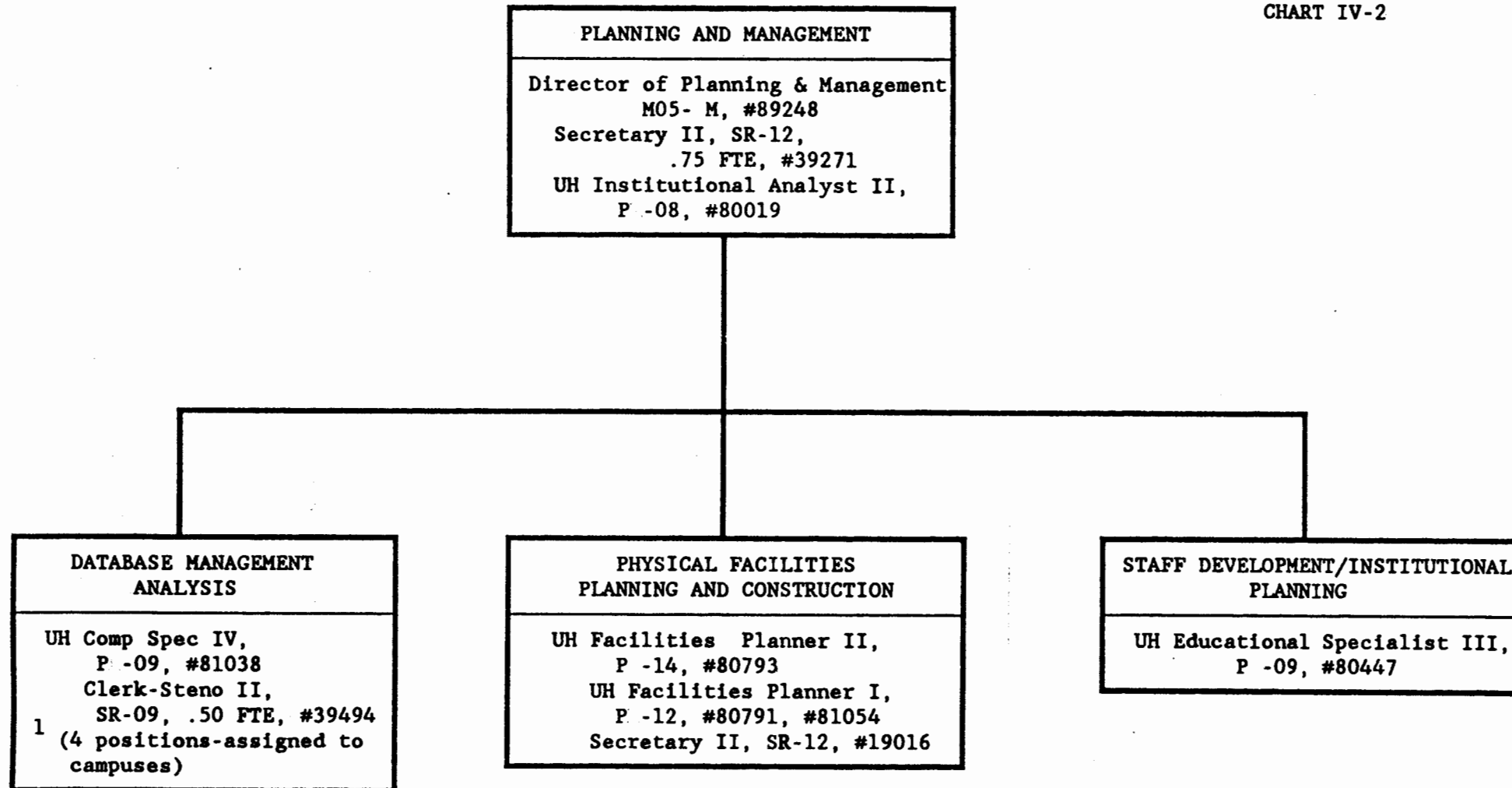


CHART UPDATED

DATE SEP 1988

UNIVERSITY OF HAWAII
COMMUNITY COLLEGES
CHANCELLOR'S OFFICE

POSITION ORGANIZATION CHART
CHART IV-2



¹ UH Comp Spec II, PR-05, .50 FTE, #81145
UH Comp Progr II, PR-05, #81121
UH Comp Spec III, PR-07, #80979
UH Systems Progr III, PR-07, #98813F, .50 FTE
UH Systems Progr III, PR-07, #81069

CHART UPDATED

DATE SEP 1988

STATE OF HAWAII
UNIVERSITY OF HAWAII
COMMUNITY COLLEGES
CHANCELLOR'S OFFICE

POSITION ORGANIZATION CHART
CHART IV-3

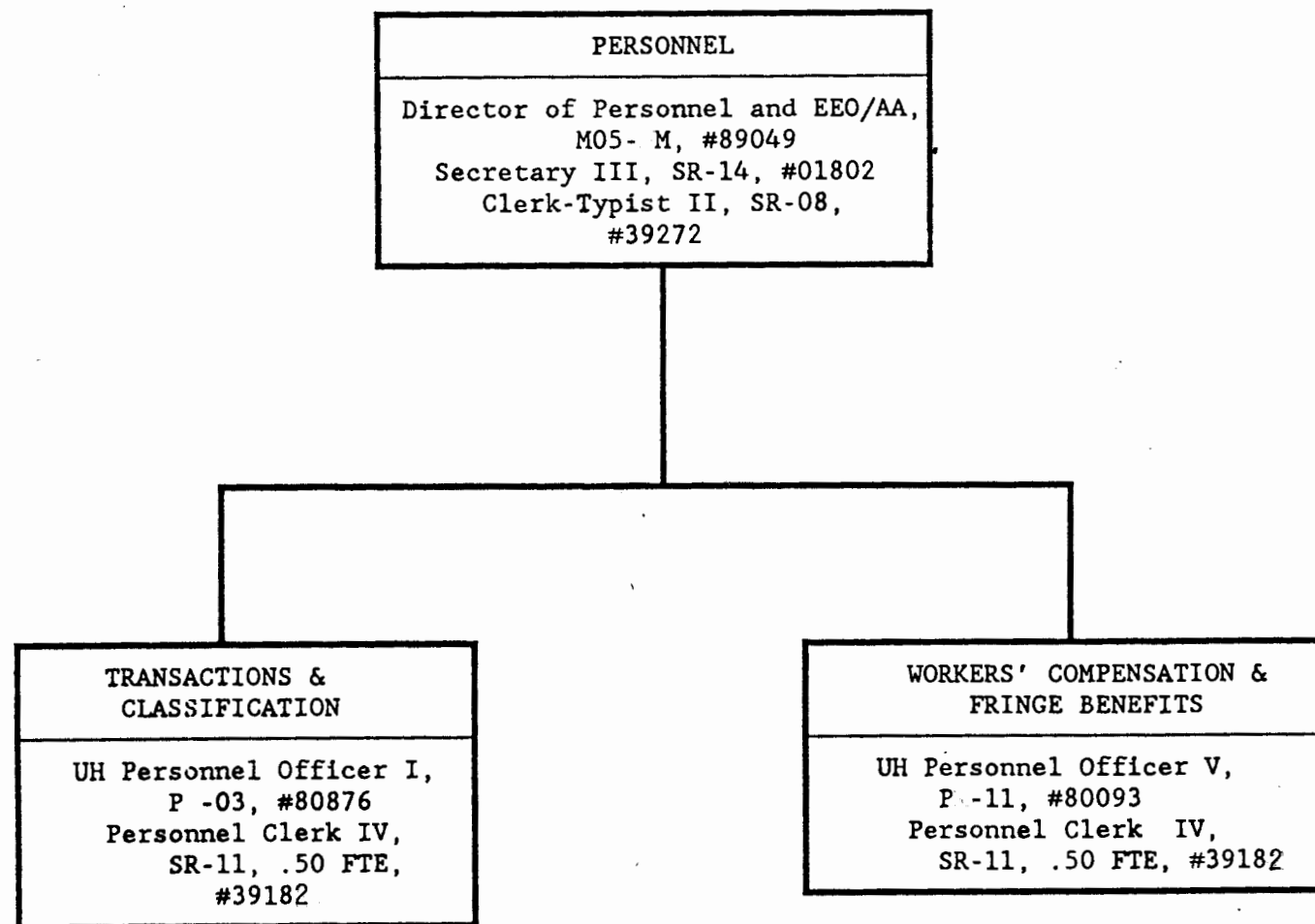


CHART UPDATED

DATE SEP 1988

POSITION ORGANIZATION CHART
CHART V

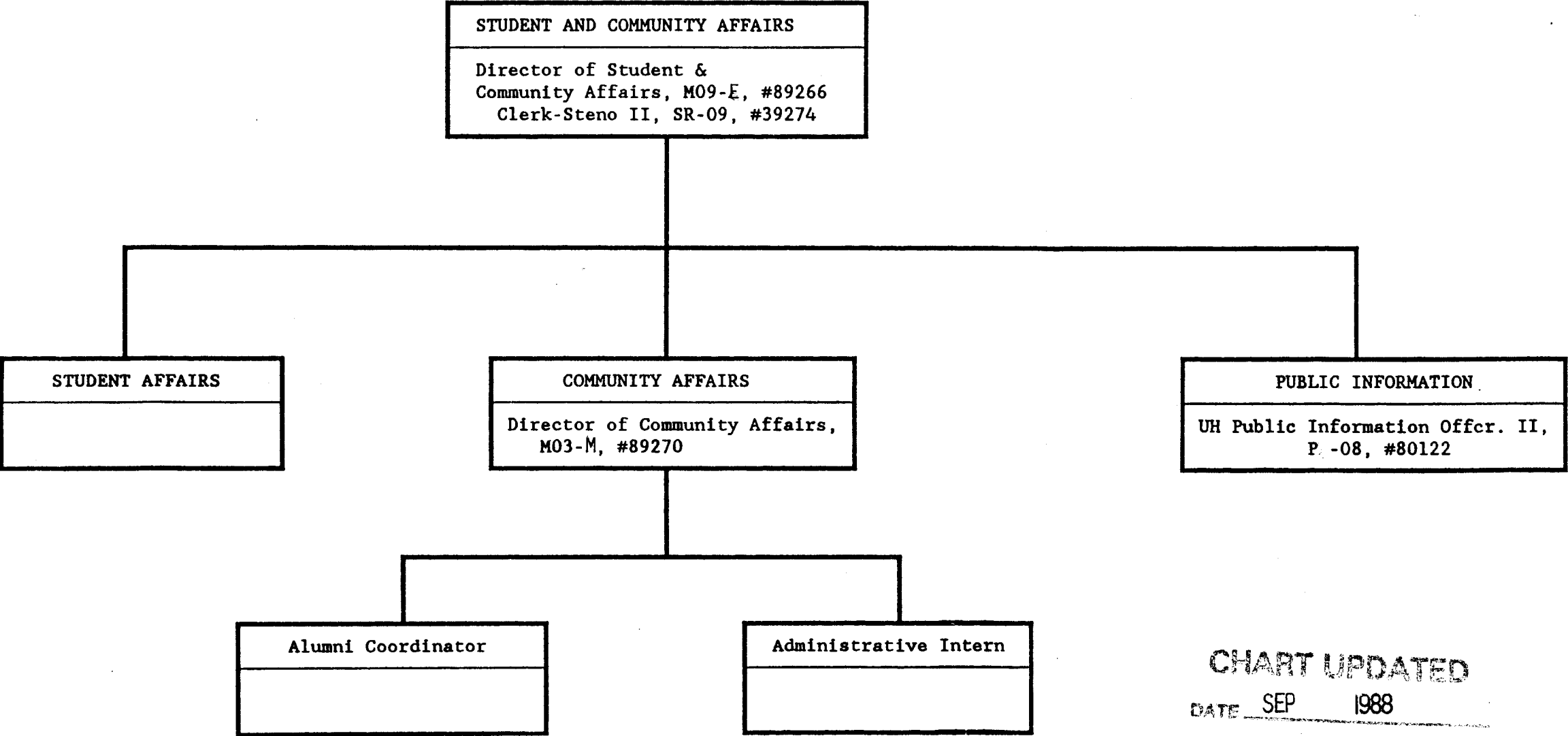


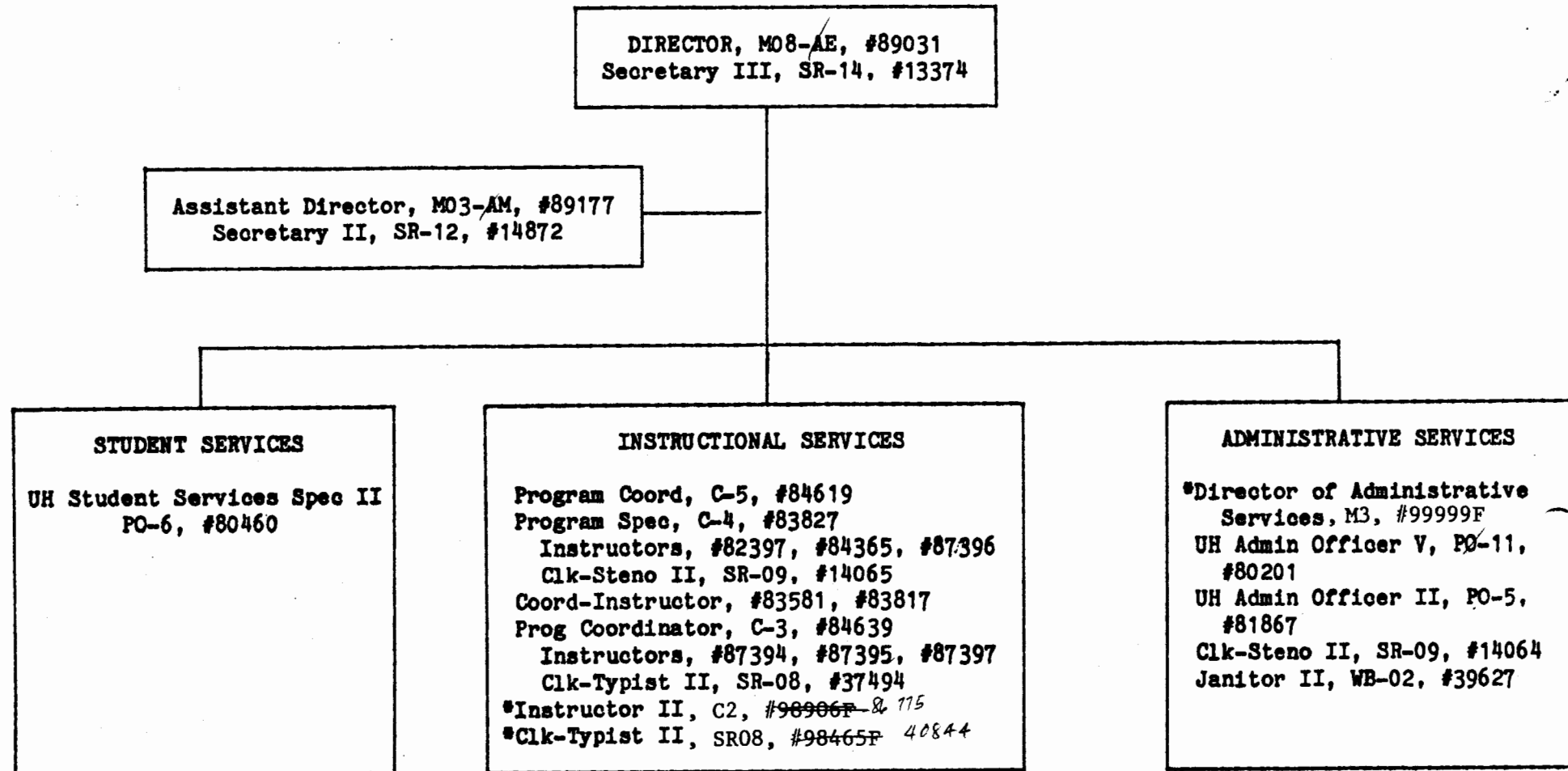
CHART UPDATED
DATE SEP 1988

UNIVERSITY OF HAWAII
CHANCELLOR FOR COMMUNITY COLLEGES

POSITION ORGANIZATION CHART

CHART VI

EMPLOYMENT TRAINING OFFICE



** New positions - to be established

CHART UPDATED

DATE SEP 1988

As of 7/29/88