

State of
University of
Leeward Community College
Organization Chart
Chart I

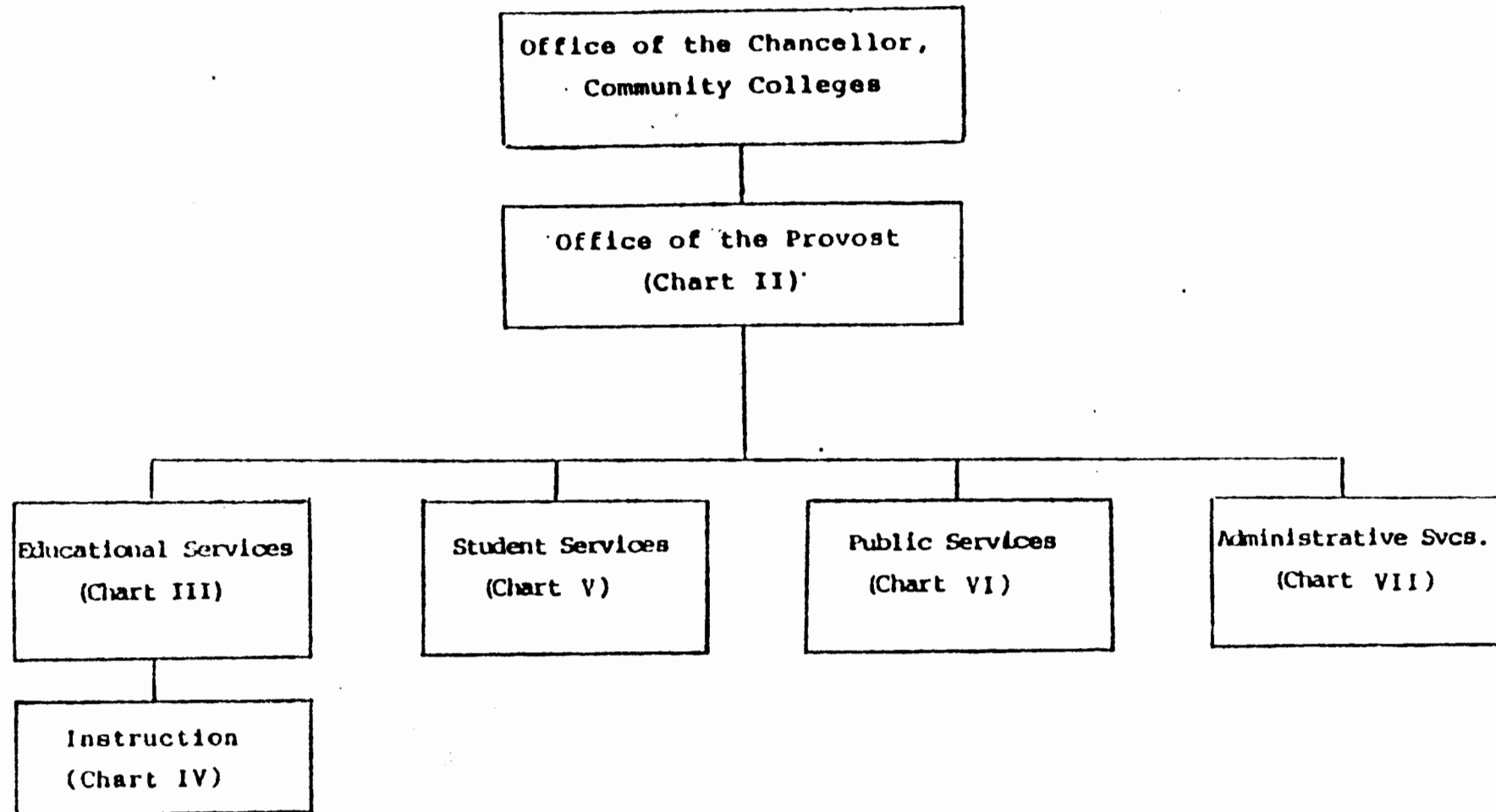


CHART UPDATED

DATE SEP 1988

STATE OF HAWAII
UNIVERSITY OF HAWAII
LEEWARD COMMUNITY COLLEGE
OFFICE OF THE PROVOST

Position Organization Chart

Chart II

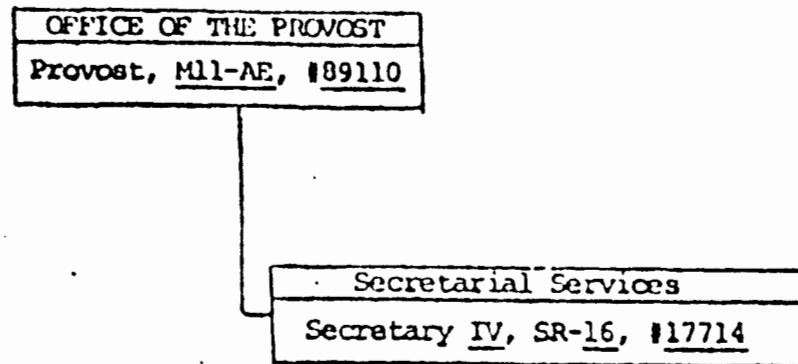
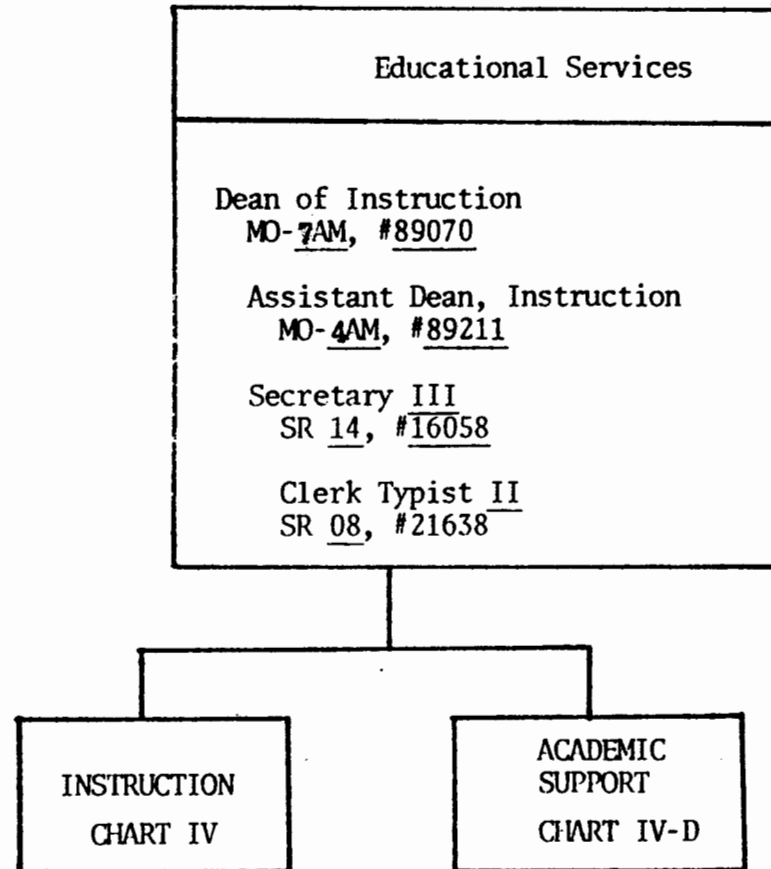


CHART UPDATED
DATE SEP 1988

State of Hawaii
University of Hawaii
Leeward Community College
Educational Services

Organization Chart
Chart III
11/13/87



APPROVED

Albert J. Amore

President, University of Hawaii

Nov 14 1988

STATE OF HAWAII
UNIVERSITY OF HAWAII
LEEWARD COMMUNITY COLLEGE

EDUCATIONAL SERVICES

Position Organization Chart 06/30/88

Chart III

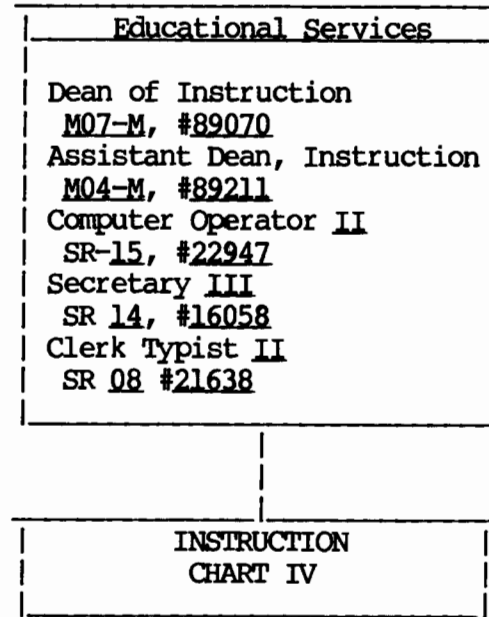


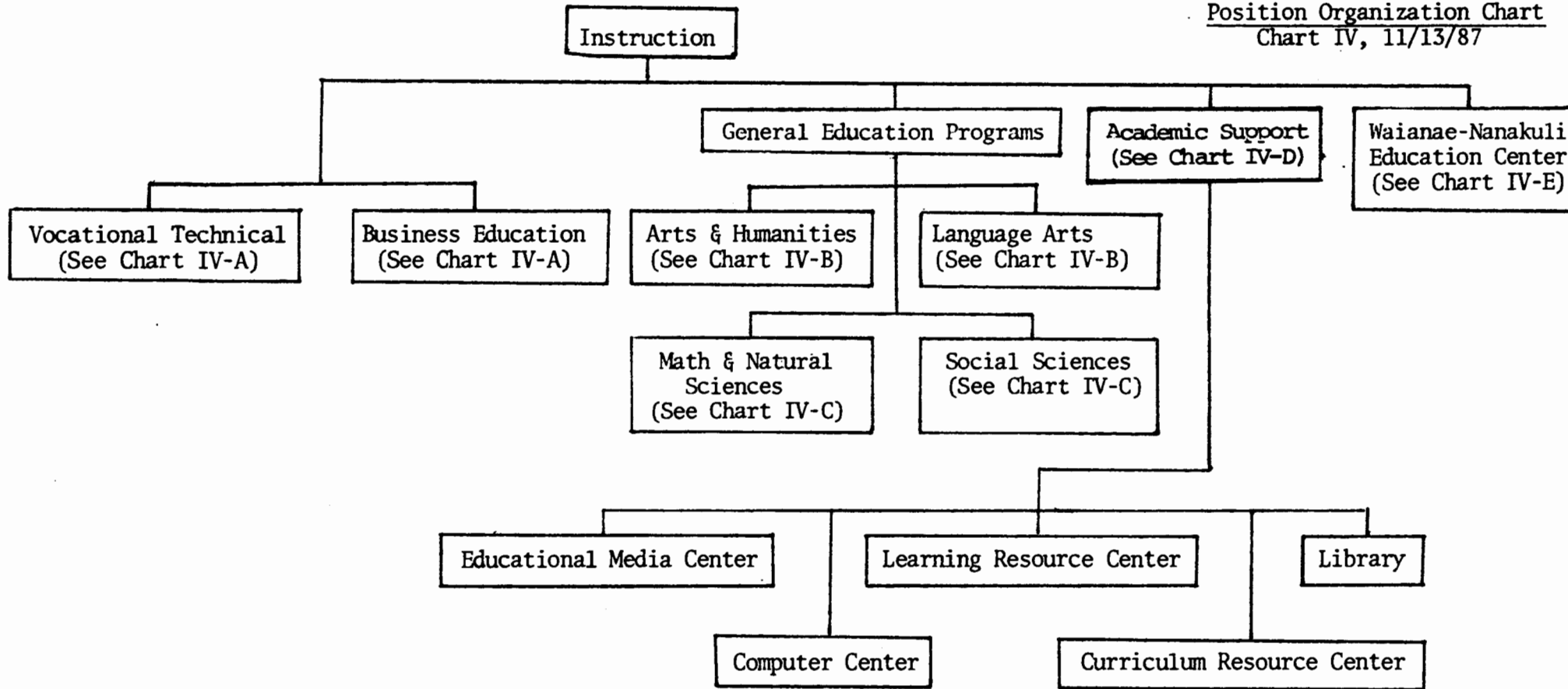
CHART UPDATED
SEP 1988
DATE _____

*Revised due to reorg.
11/4/88*

STATE OF HAWAII
UNIVERSITY OF HAWAII
LEEWARD COMMUNITY COLLEGE

ACADEMIC SUPPORT

Position Organization Chart
Chart IV, 11/13/87



APPROVED

Albert J. Amodeo

President, University of Hawaii

Date: NOV - 4 1988

STATE OF HAWAII
UNIVERSITY OF HAWAII
LEONARD COMMUNITY COLLEGE
INSTRUCTION

Position Organization Chart

Chart IV

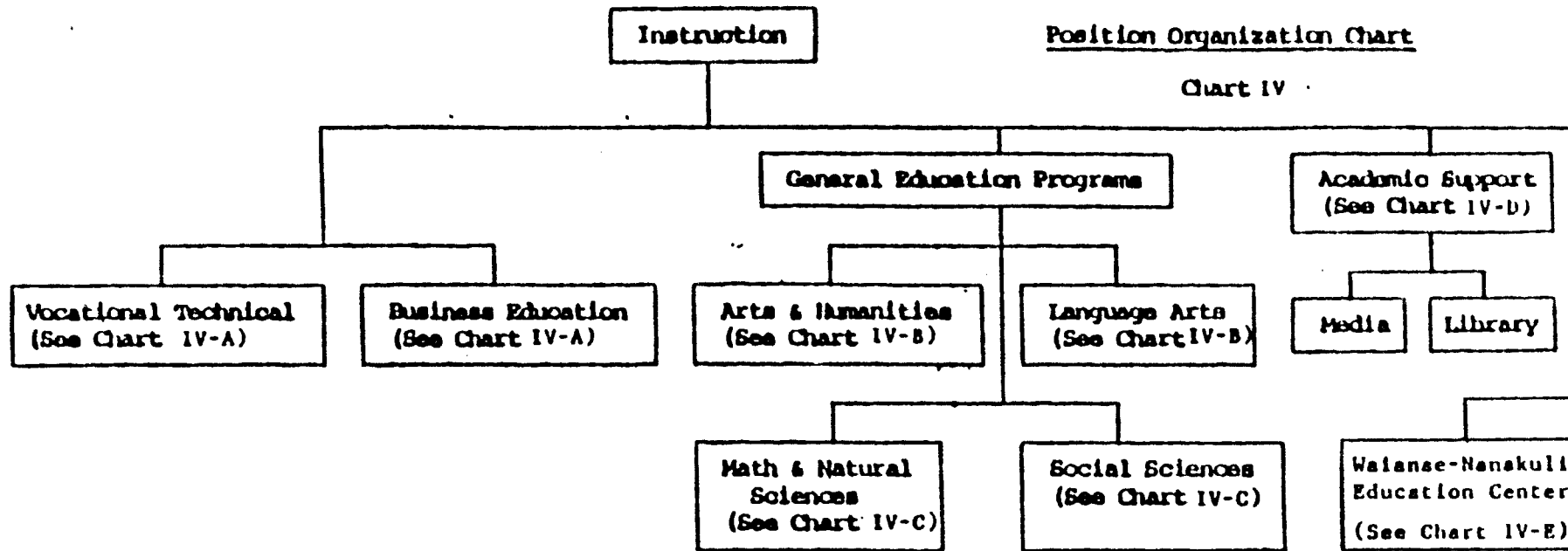


CHART UPDATED

DATE SEP 1988

*Revised due to reorg.
11/4/88*

STATE OF HAWAII
UNIVERSITY OF HAWAII
LEEWARD COMMUNITY COLLEGE

INSTRUCTION
Dean of Instruction (CC)
M07-AM, #89070

INSTRUCTION

Position Organization Chart

Chart IV-A 11/13/87

Vocational Technical
Chairperson*
Secretary II, SR-12, #22698
Instructors Total (19.0)
Health, Phys. Ed. & Rec.
Full-time: #82731, #83180 <i>Trans. to IVC - Mathematics</i>
Food Service
Full-time: #83669, #83145, #84266 #86583
Library Technology
Full-time: #82489 <i>Trans. to Chart IV-A - Bus Ed, Secretarial</i>
Commercial Arts
Full-time: #82697, #83714 <i>Trans. fr. *</i>
Auto Mechanics Tech
Full-time: #82495, #84314 #83835, #84885, #82953
Drafting Technology
Full-time: #82721, #83309, #82530 (.50) <i>84466? * Trans. fr.?</i>
<i>TV Production</i>
Full-time: #86654 <i>(Trans. fr. *)</i>
Classified
Cook I, WB-05, #27088 (S)

Business Education
Chairperson*
Secretary II, SR-12, #17713
Instructors Total (17.90) (18.90)
Accounting
Full-time: #84275, #82000, #82707 #83865, #82461, #84621
Business
Full-time: #84589, #82326, #84157 Part-time: #84780 (.4), #82116 (.5)
Sales and Management
Full-time: #83374, #83140 Part-time: #84780 (.6)
Secretarial
Full-time: #82264, #83064, #83829 #83983, #82400, #82489
Human Services
Part-time: #83759 (.4)

* Transfers reflected in
1988 update but not
reflected on proposed chart.
when reorg was prepared

*Rotating Position

Revised per 1989 update

APPROVED

Albert J. Seniore

President, University of Hawaii

Date: _____

STATE OF HAWAII
UNIVERSITY OF HAWAII
LEEWARD COMMUNITY COLLEGE

INSTRUCTION
Dean of Instruction (CC)
M07-M, #89070

INSTRUCTION

Position Organization Chart 06/30/88

Chart IV-A

Vocational Technical
Chairperson*
Secretary II, SR-12, #22698
Instructors Total (20.0)
Health, Phys. Ed. & Rec.
Full-time: #82731, #83180
Food Service
Full-time: #83669, #83145, #84266
#86583
Library Technology
Full-time: #82489
Commercial Arts
Full-time: #82697, #83714
Auto Mechanics Tech
Full-time: #82495, #84293, #84314
#83835, #84885, #82953
Drafting Technology
Full-time: #82721, #83309, #82530 (.50)
#84466
TV Production
Full-time: #86654
Classified
Cook I, WB-05, #27088 (R)

Business Education
Chairperson*
Secretary II, SR-12, #17713
Instructors Total (17.90)
Accounting
Full-time: #84275, #82000, #82707
#83865, #82461, #84621
Business
Full-time: #84589, #82326, #84157
Part-time: #84780 (.4), #82116 (.5)
Sales and Management
Full-time: #83374, #83140
Part-time: #84780 (.6)
Secretarial
Full-time: #82264, #83064, #83829
#83983, #82400
Human Services
Part-time: #83759 (.4)

*Rotating Position

Revised due to
reorg. 11/4/88

CHART UPDATED
DATE SEP 1988

APPROVED

Albert J. Simone
President, University of Hawaii
Date: NOV - 4 1988

STATE OF HAWAII
UNIVERSITY OF HAWAII
LEEWARD COMMUNITY COLLEGE

General Education Programs

GENERAL EDUCATION PROGRAMS

Position Organization Chart 06/30/88

CHART IV-B

Math & Natural Sciences
Chart IV-C

Social Sciences
See Chart IV-C

Arts & Humanities

Chairperson*

Secretary II, SR-12, #17711

Instructors Total (21.10)

Art (23.10)

Full-time: #82890, #82247, #82502, #84086

Music

Full-time: #82239, #84426, #84014

Part-time: #83636 (.5), #82116A (.5)

Dance

Part-time: #83636 (.5)

Drama & Theatre

Full-time: #83105

Part-time: #83181 (.5)

Philosophy

Full-time: #82941, #83907

Religion

Full-time: #83808

Part-time: #82021 (.6)

History

Full-time: #84018, #84026, #82581, #82306,

#83474, #83887

Part-time: #84104 (.8)

Humanities

Full-time: #82427, #84104 (.2), 86688

Part-time: #83181 (.5) ↓

Language Arts

Chairperson*

Secretary II, SR-12, #17710

Instructors Total (33.0)

English

Full-time: #82960, #83945, #84027, #83850, #84181

#84602, #84653, #84883, #83472, #83570

#83605, #83697, #82129, #82409, #82498

#82570, #82932, #86399, #83210, #86399

Part-time: #83607 (.75), #84098 (.4), #84490 (.4)

Asian Pacific Languages

Full-time: #82692, #83442, #82888

Part-time: #84098 (.6)

Journalism

Part-time: #84490 (.6)

European Language

Full-time: #82165, #82645, #82872

Part-time: #83607 (.25)

English as a Second Language

Full-time: #84555

Speech

Full-time: #82496, #82273

Communication

Full-time: #34606

*Rotating Position

*Revised per
1989 update*

UNIVERSITY OF HAWAII
LEEWARD COMMUNITY COLLEGE

General Education Programs

GENERAL EDUCATION PROGRAMS

Position Organization Charts 06/30/88

CHART IV-B

Math & Natural Sciences
Chart IV-C

Social Sciences
See Chart IV-C

Arts & Humanities	
Chairperson*	
Secretary II, SR-12, #17711	
Instructors Total (21.10)	
Art	
Full-time: #82890, #82247, #82502, #84086	
Music	
Full-time: #82239, #84426, #84014	
Part-time: #83636 (.5), #82116A (.5)	
Dance	
Part-time: #83636 (.5)	
Drama & Theatre	
Full-time: #83105	
Part-time: #83181 (.5)	
Philosophy	
Full-time: #82941, #83907	
Religion	
Full-time: #83808	
Part-time: #82021 (.6)	
History	
Full-time: #84018, #84026, #82581, #82306, #83474, #83887	
Part-time: #84104 (.8)	
Humanities	
Full-time: #82427, #99751F	
Part-time: #83181 (.5), #84104 (.2)	

Language Arts	
Chairperson*	
Secretary II, SR-12, #17710	
Instructors Total (33.0)	
English	
Full-time: #82960, #83945, #84027, #83850, #84181, #84602, #84653, #84883, #83472, #83570, #83605, #83697, #82129, #82409, #82498, #82570, #82932, #86399, #83210	
Part-time: #83607 (.75), #84098 (.4), #84490 (.4)	
Asian Pacific Languages	
Full-time: #82692, #83442, #82888	
Part-time: #84098 (.6)	
Journalism	
Part-time: #84490 (.6)	
European Language	
Full-time: #82165, #82645, #82872	
Part-time: #83607 (.25)	
English as a Second Language	
Full-time: #84555	
Speech	
Full-time: #82496, #82273	
Learning Skills	
Full-time: #82186	
Communication	
Full-time: #84606	

*Rotating Position

Revised due to
reorg. 11/4/88

CHART UPDATED

DATE SEP 1988

General Education Programs

STATE OF HAWAII
UNIVERSITY OF HAWAII
LEEWARD COMMUNITY COLLEGE

GENERAL EDUCATION PROGRAMS

Position Organization Chart 06/30/88

Arts & Humanities
See Chart IV-B

Language Arts
See Chart IV-B

Chart IV-C

Math & Sciences

Chairperson*
Secretary II, SR-12, #17712
Instructors Total (32.0)
Biological Science
Full-time: #82225, #84384, #84679,
Part-time: #84849 (.2)
Mathematics
Full-time: #82024, #82522, #84776, #82470, #83055, #82845,
#84429, #82035, #84777, #83965, #86642**
#83479, #83180
Part-time: #83660 (.4)
Chemistry
Full-time: #83218, #82085, #82517
Part-time: #84160 (.8)
Oceanography
Full-time: #83248
Part-time: #84849 (.8), #83847 (.2)
Physical Science
Full-time: #82134, #82277, #82670, #82404
Part-time: #83847 (.8), #83660 (.6)
Science
Part-time: #84160 (.2)
Data Processing
Full-time: #83103, #82986, #83161, #84557, #84069

Social Sciences

Chairperson*
Secretary II, SR-12, #19604
Instructors Total (16.0)
Psychology
Full-time: #83104
Part-time: #82017 (.8), #82799 (.8),
#84779 (.8), #82691 (.6)
Anthropology
Full-time: #83464, #83615
Economics
Full-time: #83369, #83129
Part-time: #83759 (.6), #84441 (.6)
Geography
Full-time: #83466
Political Science
Full-time: #84634
Social Science
Part-time: #84358 (.2)
Sociology
Part-time: #84358 (.8), #82021 (.4), #84441 (.4),
#82543 (.6)
Human Development
Part-time: #82017 (.2), #82799 (.2)
Human Services
Full-time: #82029
Part-time: #82691 (.4), #82543 (.4), #84779 (.2)

*Rotating Position

**Administratively assigned to Waianae-Nanakuli Education Center

Revised per 1989
update

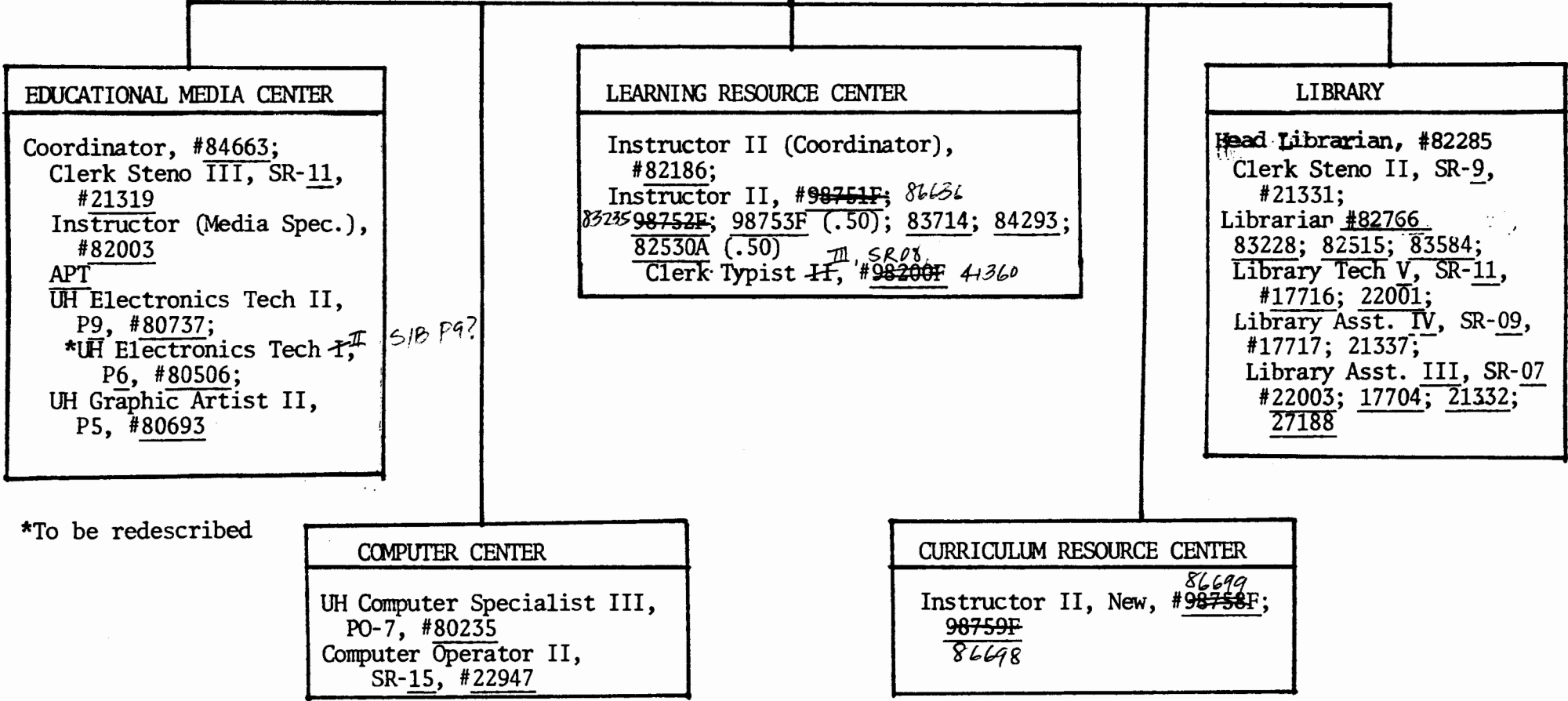
CHART UPDATED

DATE SEP 1988

ACADEMIC SUPPORT
Assistant Dean for Academic
Support, MO-4AM, #89252;

STATE OF HAWAII
UNIVERSITY OF HAWAII
LEEWARD COMMUNITY COLLEGE

ACADEMIC SUPPORT
Position Organization Chart
Chart IV-D, 11/13/87



APPROVED

Albert J. Simone

President, University of Hawaii

Date: NOV - 4 1988

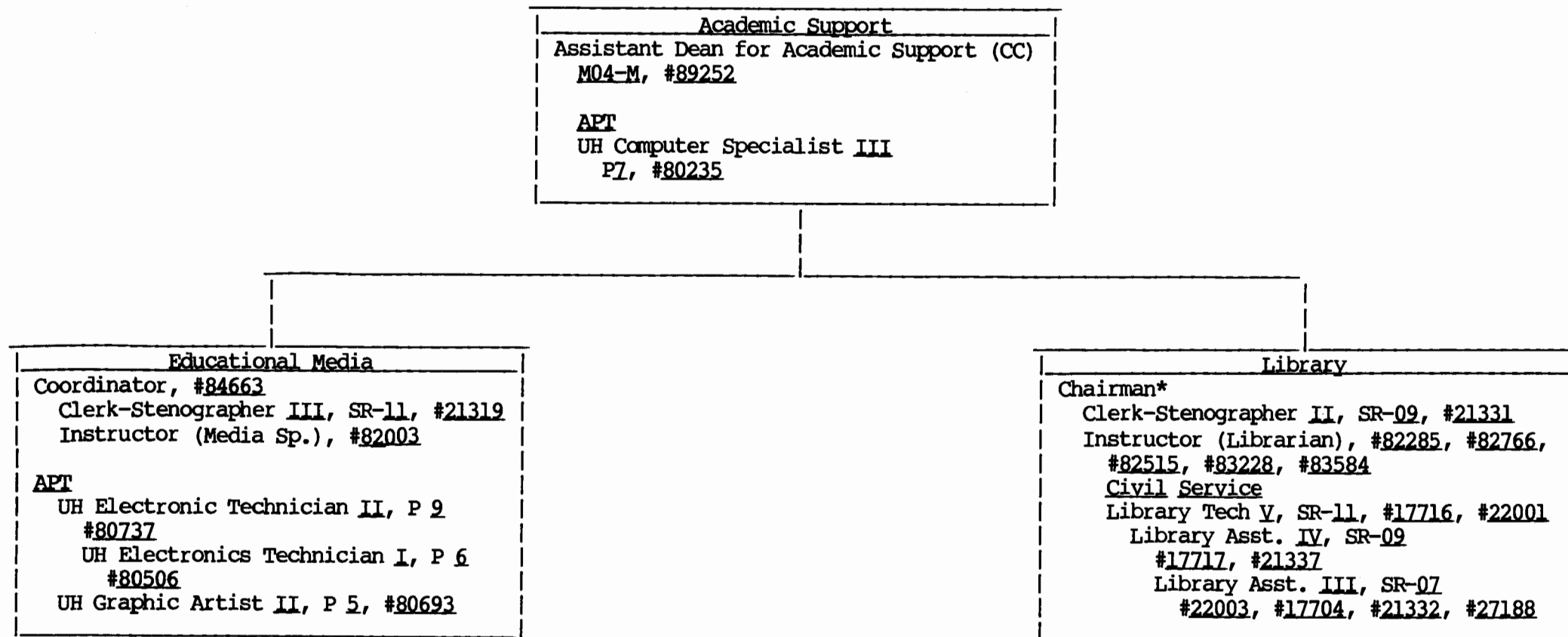
Rev. per 1989 update

STATE OF HAWAII
UNIVERSITY OF HAWAII
LEEWARD COMMUNITY COLLEGE

ACADEMIC SUPPORT

Position Organization Chart 06/30/88

Chart IV-D



*Rotating position

CHART UPDATED

Revised due to
reorg. 11/4/88

DATE SEP 1988

STATE OF HAWAII
UNIVERSITY OF HAWAII
LEEWARD COMMUNITY COLLEGE

INSTRUCTION
Waianae-Nanakuli Instruction

Position Organization Chart 06/30/88

Chart IV-E

<u>Waianae-Nanakuli Education Center</u>
Coordinator* (1.0)
Clerk Steno II, SR 09, #26797, (1.0)
Educ. Spec. I, P 03, #81032, (1.0)
Instructors (2.0) #

*Rotating faculty position; administratively assigned

#Rotating faculty positions from divisions

CHART UPDATED
DATE SEP 1988

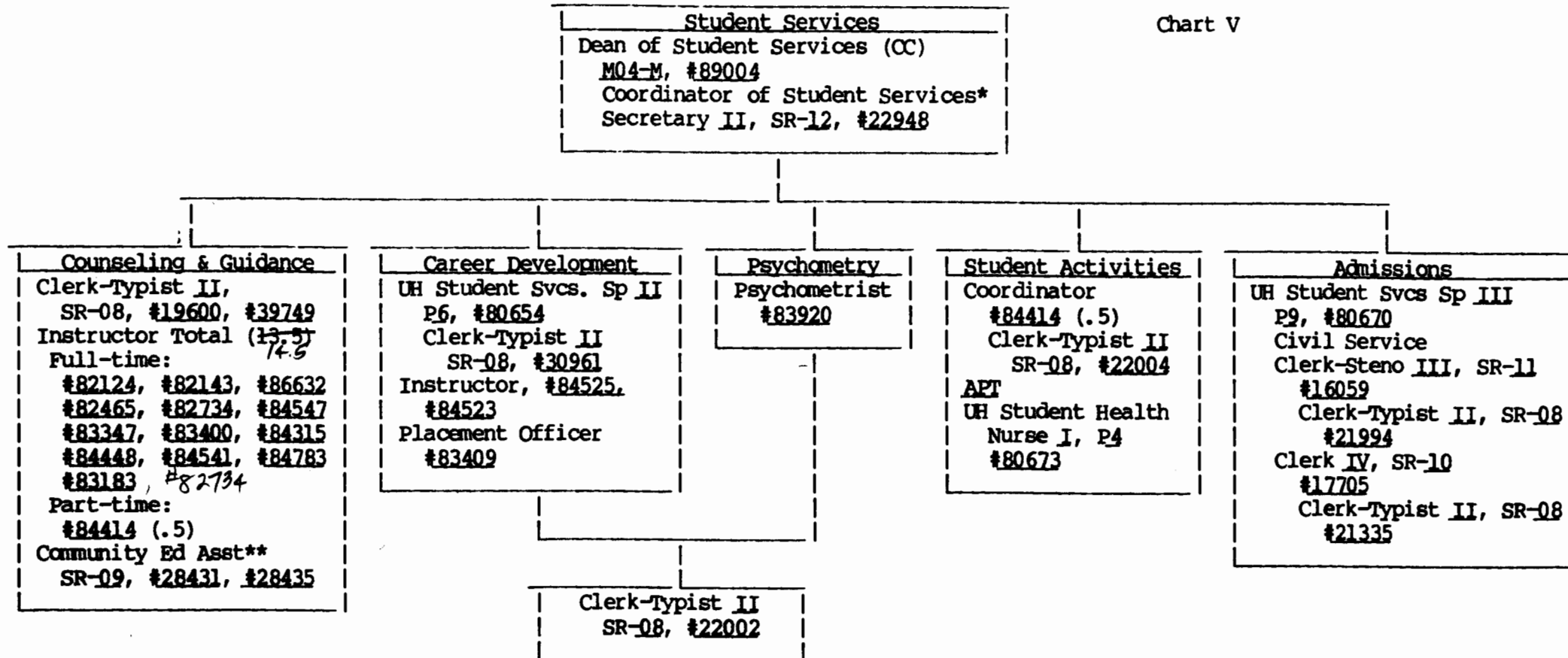
STATE OF HAWAII
UNIVERSITY OF HAWAII
LEEWARD COMMUNITY COLLEGE

STUDENT SERVICES

Position Organization Chart

06/30/88

Chart V



*Rotating position

**Assigned to Waianae-Nanakuli Education Center

Rev per 1989 update

CHART UPDATED

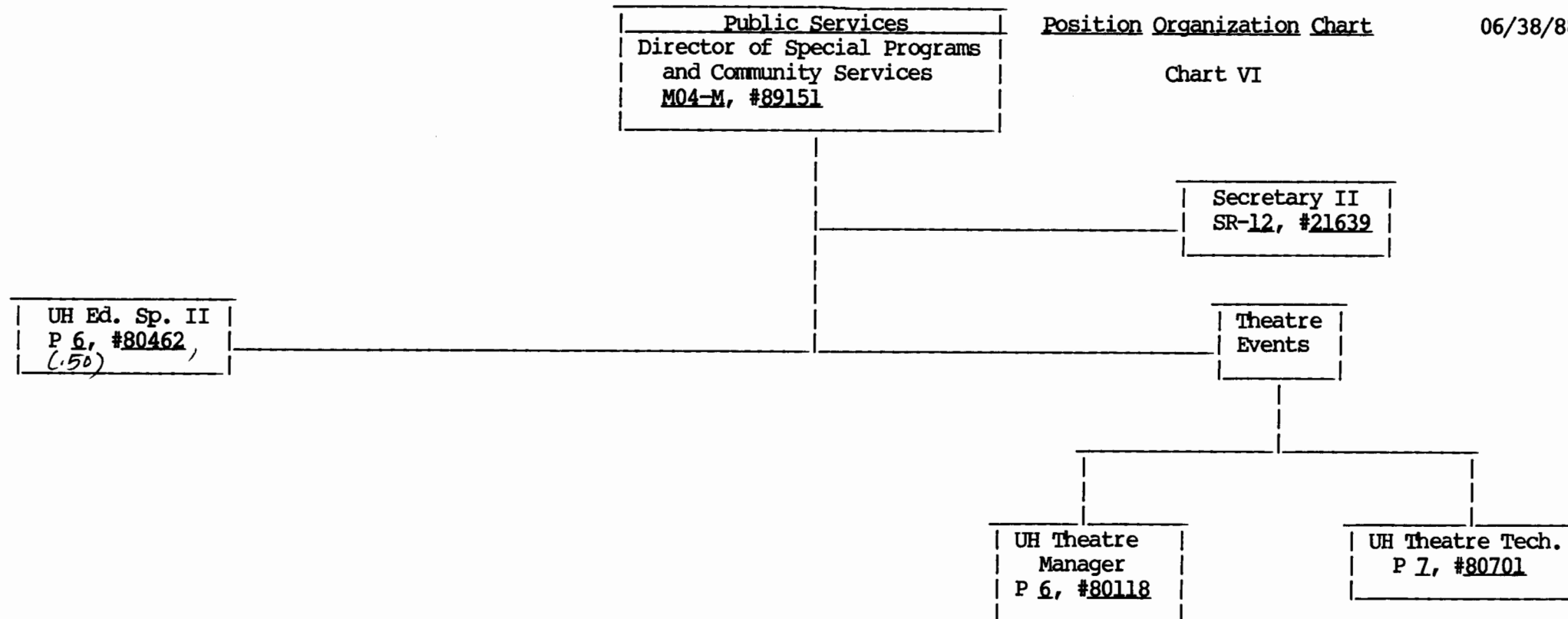
DATE SEP 1988

STATE OF HAWAII
UNIVERSITY OF HAWAII
LEEWARD COMMUNITY COLLEGE
EDUCATIONAL SERVICES

Position Organization Chart

06/38/88

Chart VI



Rev per 1989 update

CHART UPDATED

DATE SEP 1988

STATE OF HAWAII
UNIVERSITY OF HAWAII
LEEWARD COMMUNITY COLLEGE

ADMINISTRATIVE SERVICES

Administrative Services
Director, M05-M, #89083

Position Organization Chart

06/30/88

Chart VII

Secretary II
SR-12, #21992

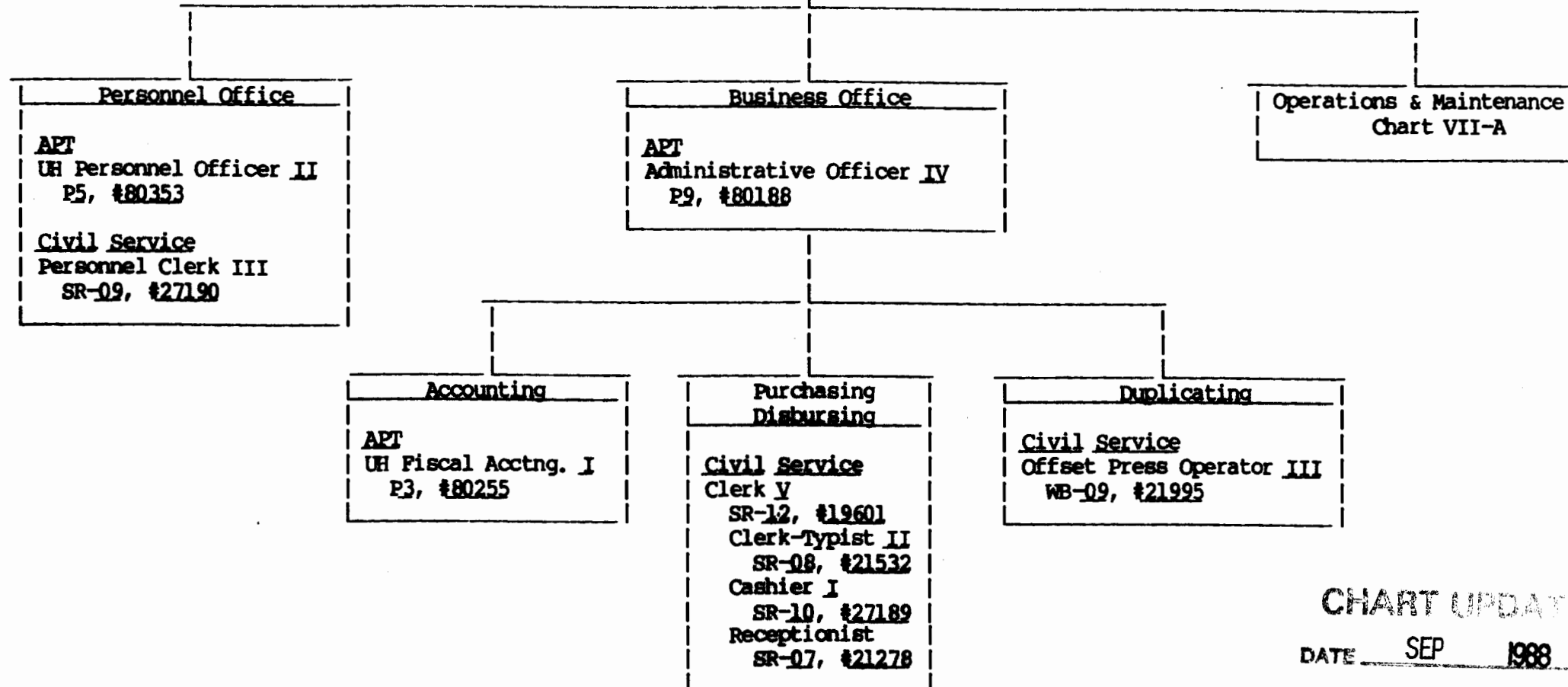
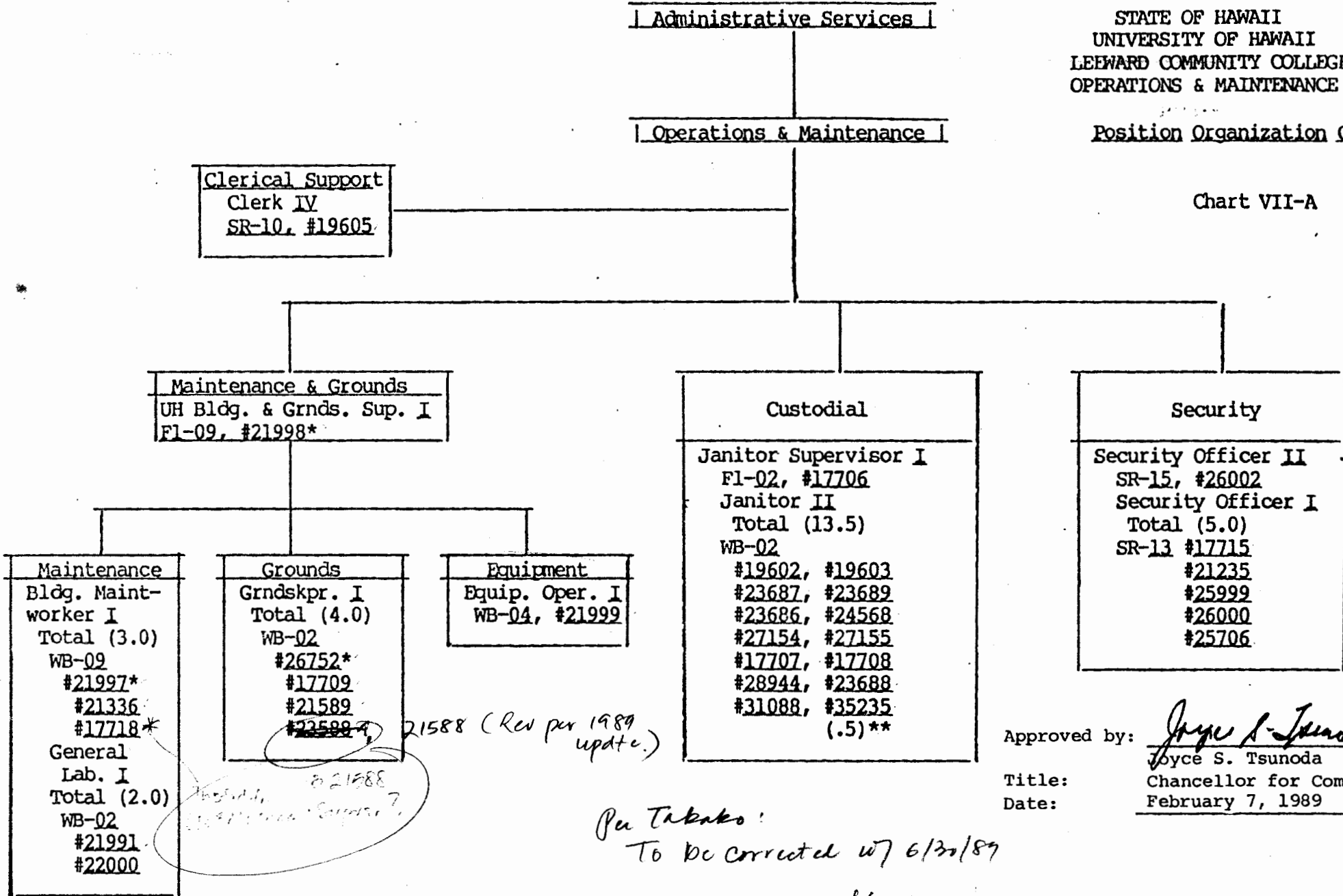


CHART UPDATED

DATE SEP 1988

Position Organization Chart

Chart VII-A



Approved by: Joyce S. Tsunoda
Title: Chancellor for Comm Coll
Date: February 7, 1989

*Per Takako:
To be corrected w/ 6/30/89
update.*

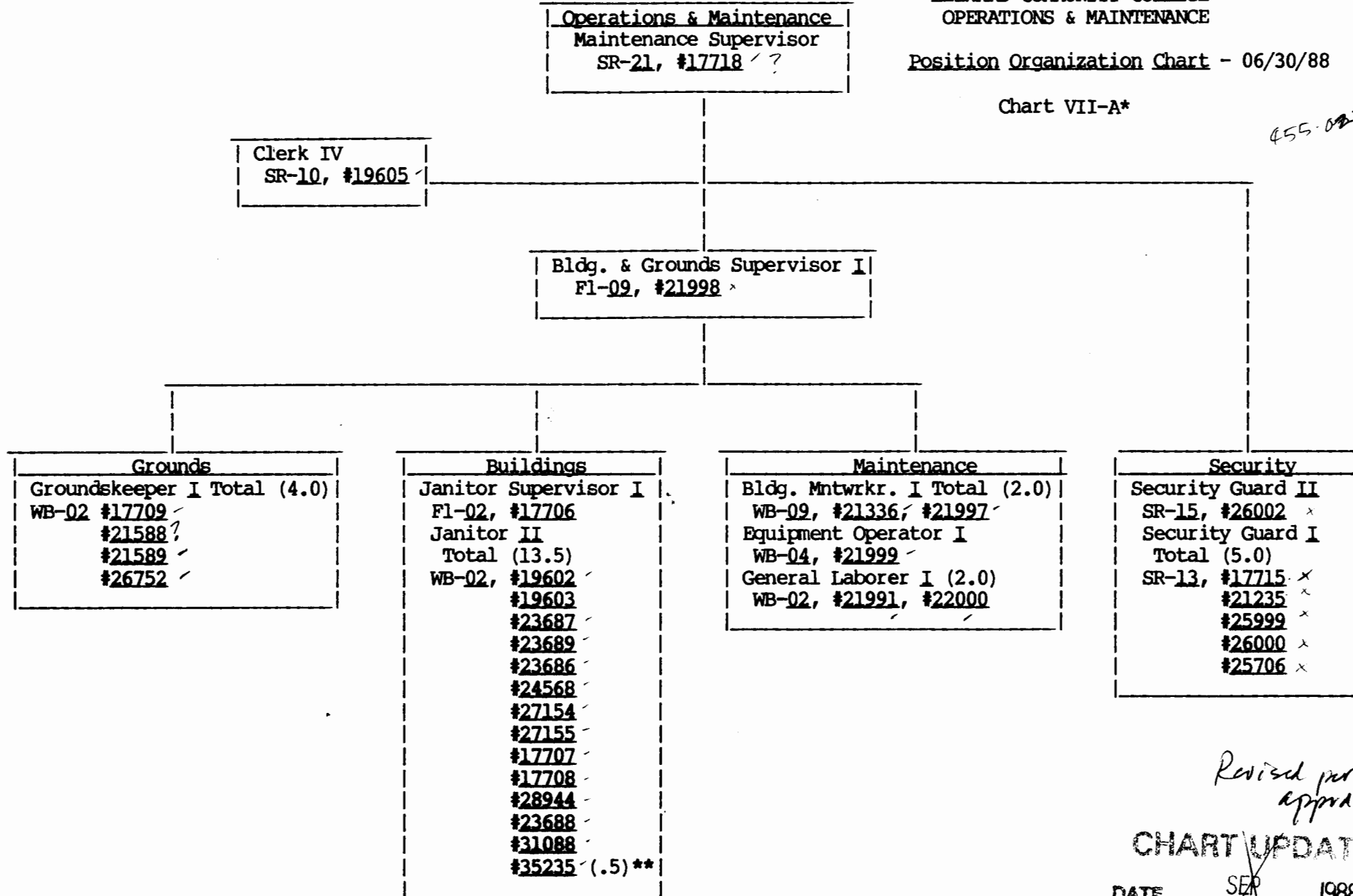
*To be reallocated upon approval of reorganization
**Assigned to Waianae-Nanakuli Education Center

STATE OF HAWAII
UNIVERSITY OF HAWAII
LEEWARD COMMUNITY COLLEGE
OPERATIONS & MAINTENANCE

Position Organization Chart - 06/30/88

Chart VII-A*

455-0277



Revised per reorg
approx 2/1/89.

CHART UPDATED

DATE SEP 1988

*Chart renumbering only
**Assigned to Waianae-Nanakuli Education Center