

STATE OF HAWAII
UNIVERSITY OF HAWAII
UNIVERSITY OF HAWAII AT MANOA
COLLEGE OF EDUCATION

ORGANIZATIONAL CHART

CHART I

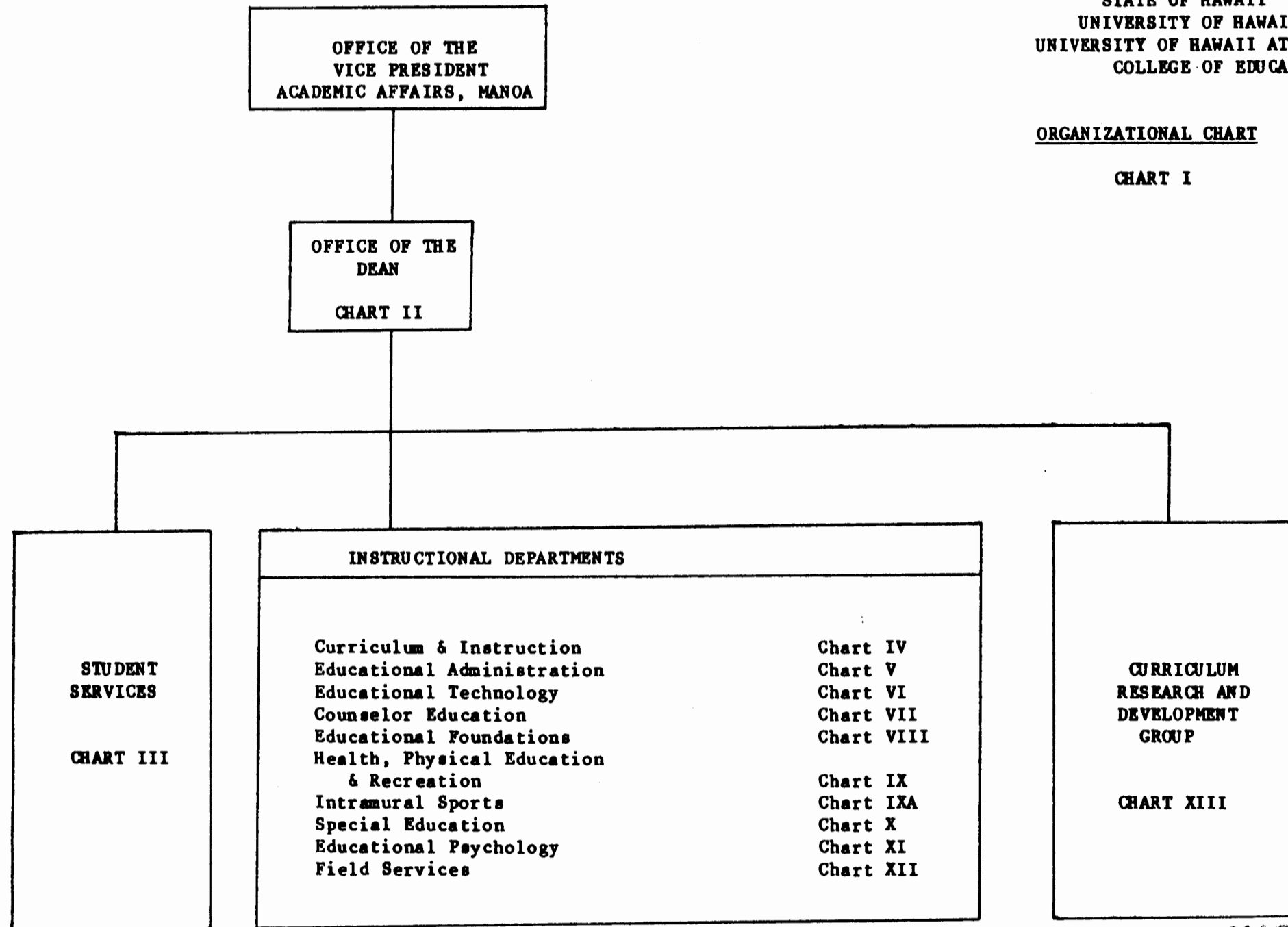
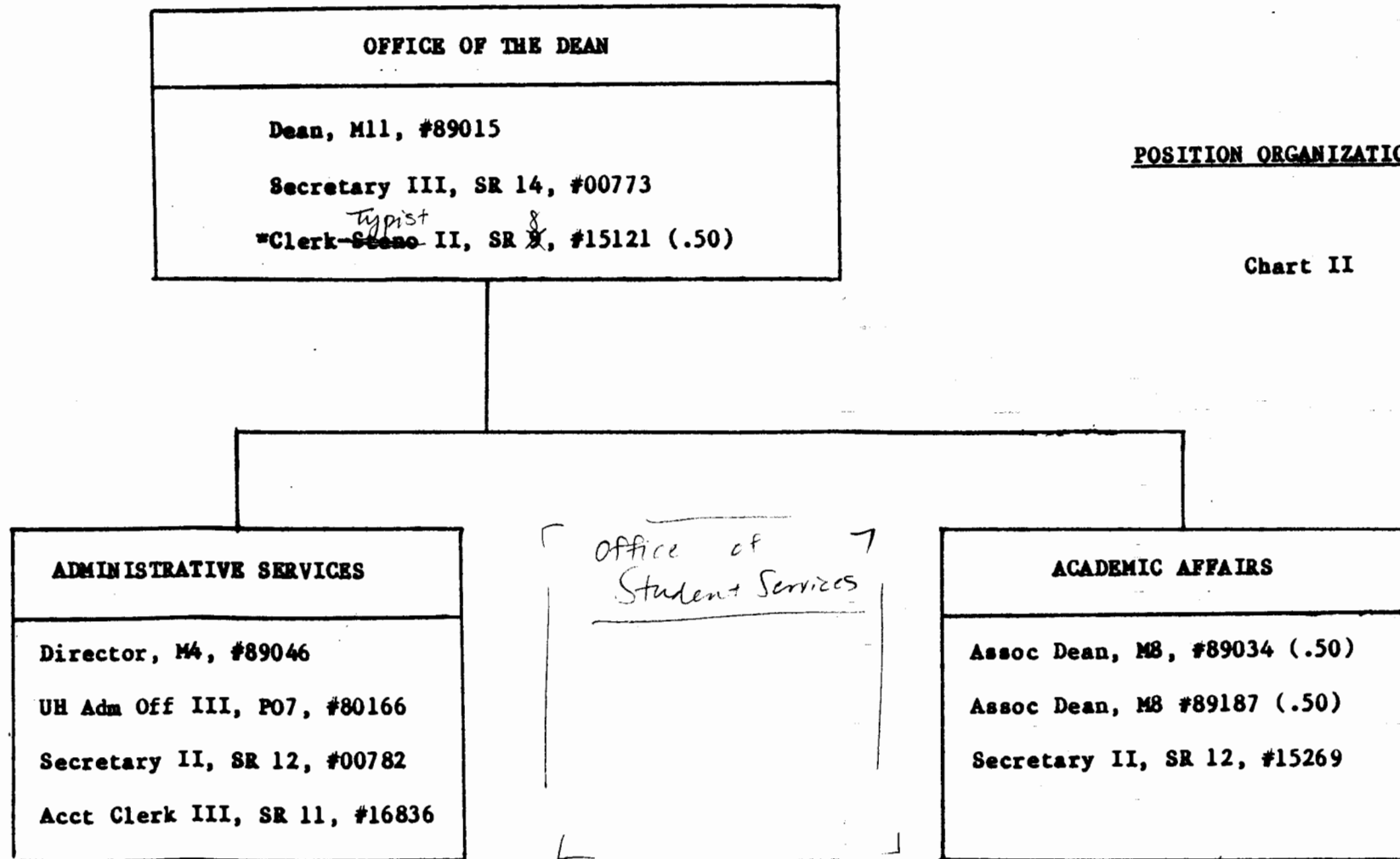


CHART UPDATED
SEP 1988
DATE _____

STATE OF HAWAII
UNIVERSITY OF HAWAII AT MANOA
COLLEGE OF EDUCATION
OFFICE OF THE DEAN

POSITION ORGANIZATION CHART

Chart II



*To be redescrbed

Experimental Plans
(omitted by oversight)

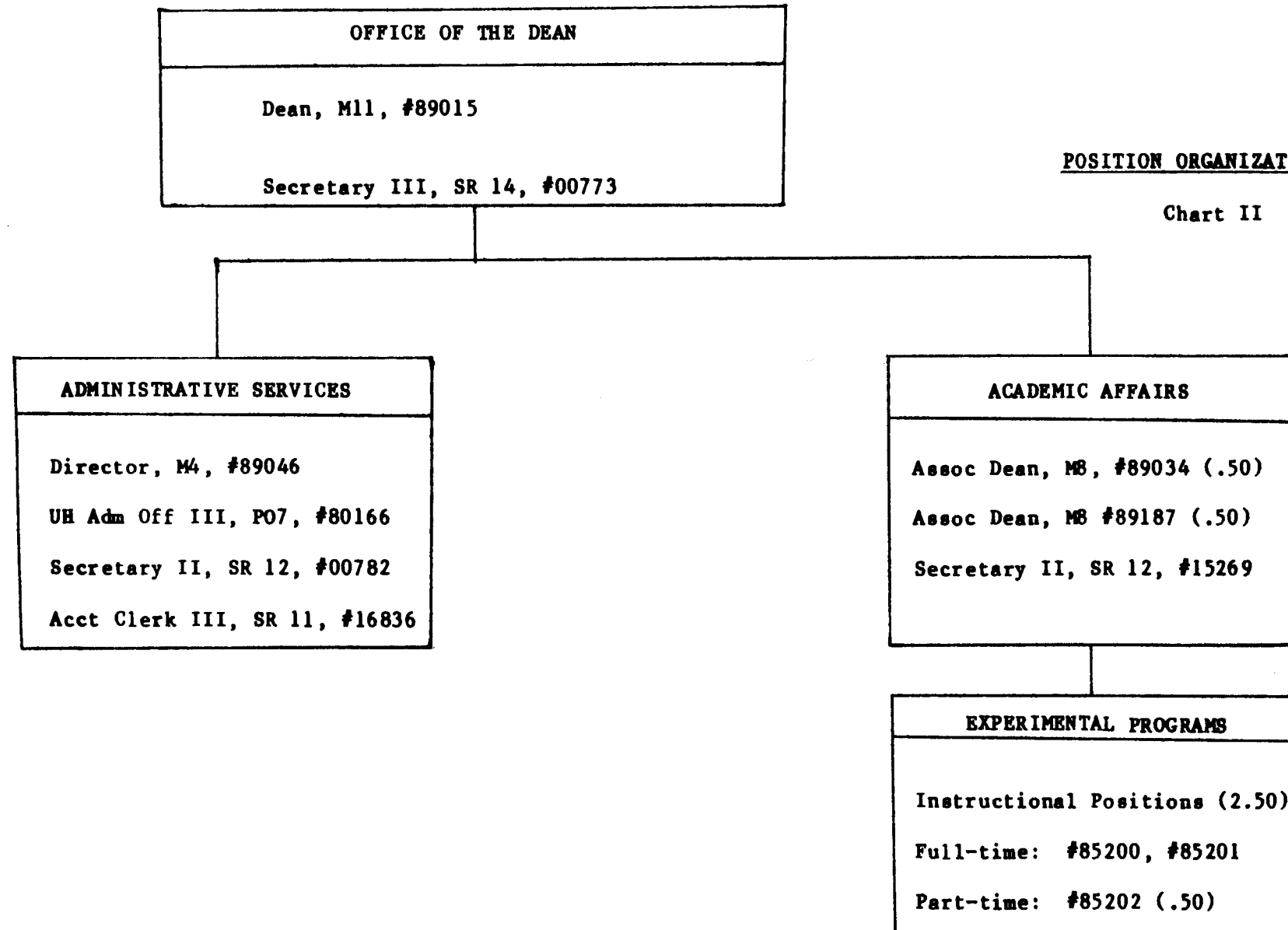
Revised per
1989 update

Approved by: *J. Maule*

Title: Vice President for Academic Affairs

Date: OCT 24 1988

STATE OF HAWAII
UNIVERSITY OF HAWAII AT MANOA
COLLEGE OF EDUCATION
OFFICE OF THE DEAN



Revised due to
minor reorg.
10/24/88

CHART UPDATED
DATE ~~SEP~~ 1988

STATE OF HAWAII
UNIVERSITY OF HAWAII AT MANOA
COLLEGE OF EDUCATION
STUDENT SERVICES

OFFICE OF THE
DEAN

Position Organization Chart

Chart III

OFFICE OF STUDENT SERVICES

Asst Dean, M4, #89000

Secretary II, SR 12, #15270

Clerk Typist II, SR 08, #19558

Faculty Positions (3.00)

Full-time: #82423, #83450, #84544

*Incorp. into chart II per
1089 update*

CHART UPDATED

DATE SEP 1988

STATE OF HAWAII
UNIVERSITY OF HAWAII AT MANOA
COLLEGE OF EDUCATION
CURRICULUM & INSTRUCTION

OFFICE OF THE
DEAN

POSITION ORGANIZATION CHART

Chart IV III

DEPARTMENT OF CURRICULUM AND INSTRUCTION

Chairman (Appointed from Instructional Positions)

Secretary II, SR 12, #00785

Clerk-Steno III, SR 11, #12844

UH Adm & Fiscal Support Sp, PO1, #80390S*

Instructional Positions (25.50)

Full-time: #82250, #82043, #82093, #82144, #84090
#82288, #82300, #82347, #82632, #82711
#84529, #83084, #83335, #83922, #83923
#83954, #83672, #83995, #84407, #84670
#84680, #82235

Part-time: #83872 (.50), #84527 (.50), #88646 (.50), #85646 (.50)
#88298 (.50), #89187 (.50), #82276 (.50)

Approved by: JM

Title: President for Academic Affairs

Date: OCT 24 1988

new - 1988 update
Recog chart in error 82276 transfer to Dennis 1/88

OFFICE OF THE
DEAN

POSITION ORGANIZATION CHART

Chart IV

DEPARTMENT OF CURRICULUM AND INSTRUCTION

Chairman (Appointed from Instructional Positions)

Secretary II, SR 12, #00785

Clerk-Steno III, SR 11, #12844

Clerk-Steno II, SR 9, #15121 (.50)

UH Adm & Fiscal Support Sp, P01, #80390S*

Instructional Positions (25.00)

Full-time: #82250, #82043, #82093, #82144, #84090
#82288, #82300, #82347, #82632, #82711
#84529, #83084, #83335, #83922, #83923
#83954, #83672, #83995, #84407, #84670
#84680, #82235

Part-time: #83872 (.50), #84527 (.50), #88646 (.50)
#85646 (.50), #88298 (.50), #89187 (.50)

*Temporary position: Center for Economic Education

*Revised due to
minor reorg.
10/24/88*

CHART UPDATED

DATE SEP 1988

STATE OF HAWAII
UNIVERSITY OF HAWAII AT MANOA
COLLEGE OF EDUCATION
EDUCATIONAL ADMINISTRATION

OFFICE OF THE
DEAN

POSITION ORGANIZATION CHART

Chart ~~V~~ IV

DEPARTMENT OF EDUCATIONAL ADMINISTRATION

Chairman (Appointed from Instructional Positions)

Secretary II, SR 12, #17304

Instructional Positions (6.50)

Full-time: #82006, #82075, #84402, #84437
#84353, #85054

Part-time: #85198 (.50)

Rev. 1989 update

CHART/UPDATED

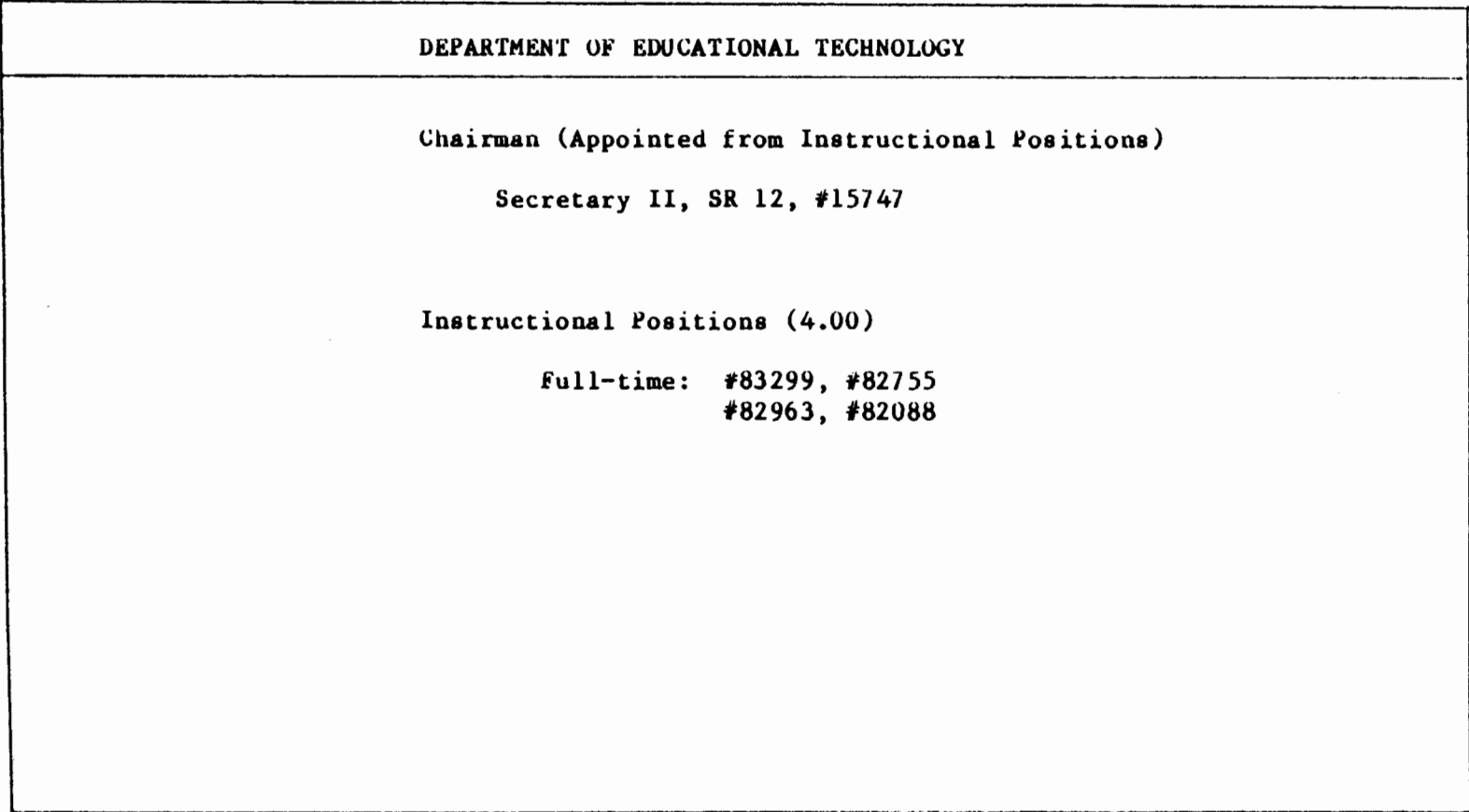
DATE SEP 1988

STATE OF HAWAII
UNIVERSITY OF HAWAII AT MANOA
COLLEGE OF EDUCATION
EDUCATIONAL TECHNOLOGY

OFFICE OF THE
DEAN

Position Organization Chart

Chart VI ✓



Rev - 1989 update

CHART UPDATED

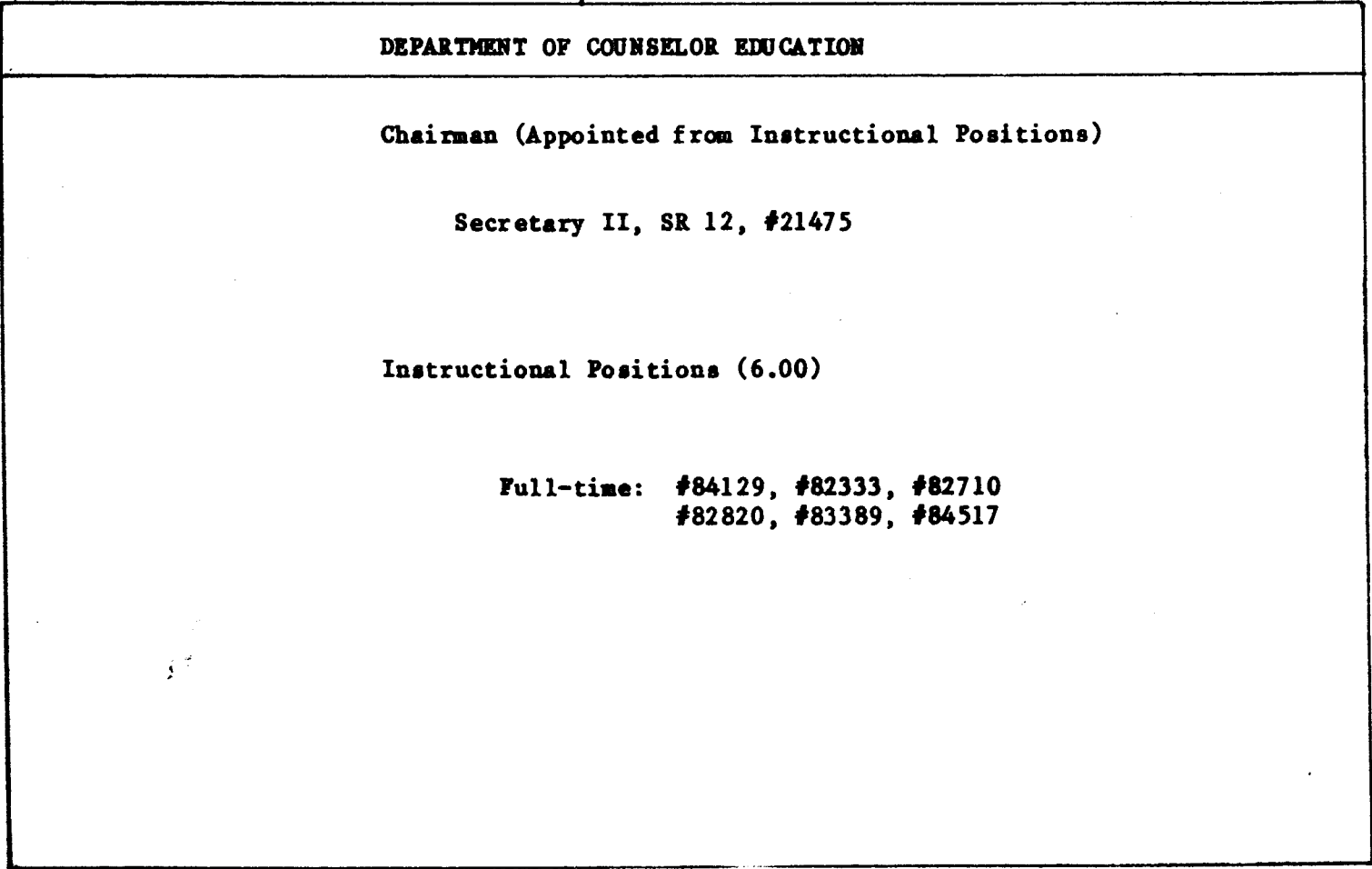
DATE SEP 1988

STATE OF HAWAII
UNIVERSITY OF HAWAII AT MANOA
COLLEGE OF EDUCATION
COUNSELOR EDUCATION

OFFICE OF THE
DEAN

POSITION ORGANIZATION CHART

Chart VII
VI



Rev - 1989 update

CHART UPDATED

DATE SEP 1988

STATE OF HAWAII
UNIVERSITY OF HAWAII AT MANOA
COLLEGE OF EDUCATION
EDUCATIONAL FOUNDATIONS

OFFICE OF THE
DEAN

POSITION ORGANIZATION CHART

Chart VIII VII

DEPARTMENT OF EDUCATIONAL FOUNDATIONS

Chairman (Appointed from Instructional Positions)

Secretary II, SR 12, #13672

Instructional Positions (7.00)

Full-time: #83952, #82617, #82678
#83196, #84261, #84835

Part-time: #82141 (.50), #85197 (.50)

Rev - 1981 update

CHART UPDATED

DATE SEP 1988

STATE OF HAWAII
UNIVERSITY OF HAWAII AT MANOA
COLLEGE OF EDUCATION
HEALTH, PHYSICAL EDUCATION,
& RECREATION

OFFICE OF THE
DEAN

POSITION ORGANIZATION CHART

Chart ~~IX~~ VIII

DEPARTMENT OF HEALTH, PHYSICAL EDUCATION
& RECREATION

Chairman (Appointed from Instructional Positions)

Secretary II, SR 12, #07470

Instructional Positions (13.00)

Full-time: #82083, #82319, #82479, #82528
#82578, #82861, #83131, #83425
#84065, #84117, #84352, #84381
#84514

INTRAMURAL SPORTS

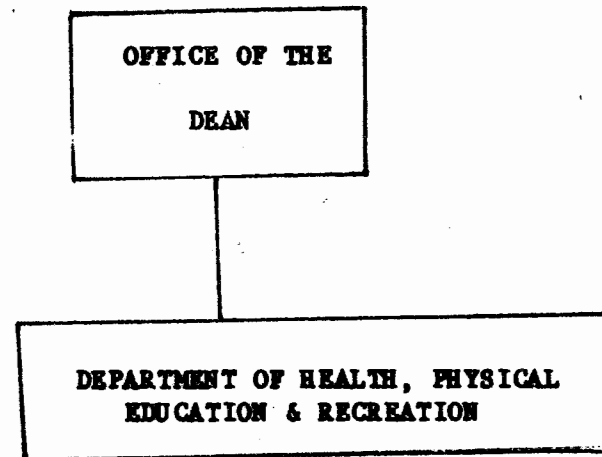
Rev - 1989 update

CHART ~~IX~~ VIII UPDATED

DATE SEP 1988

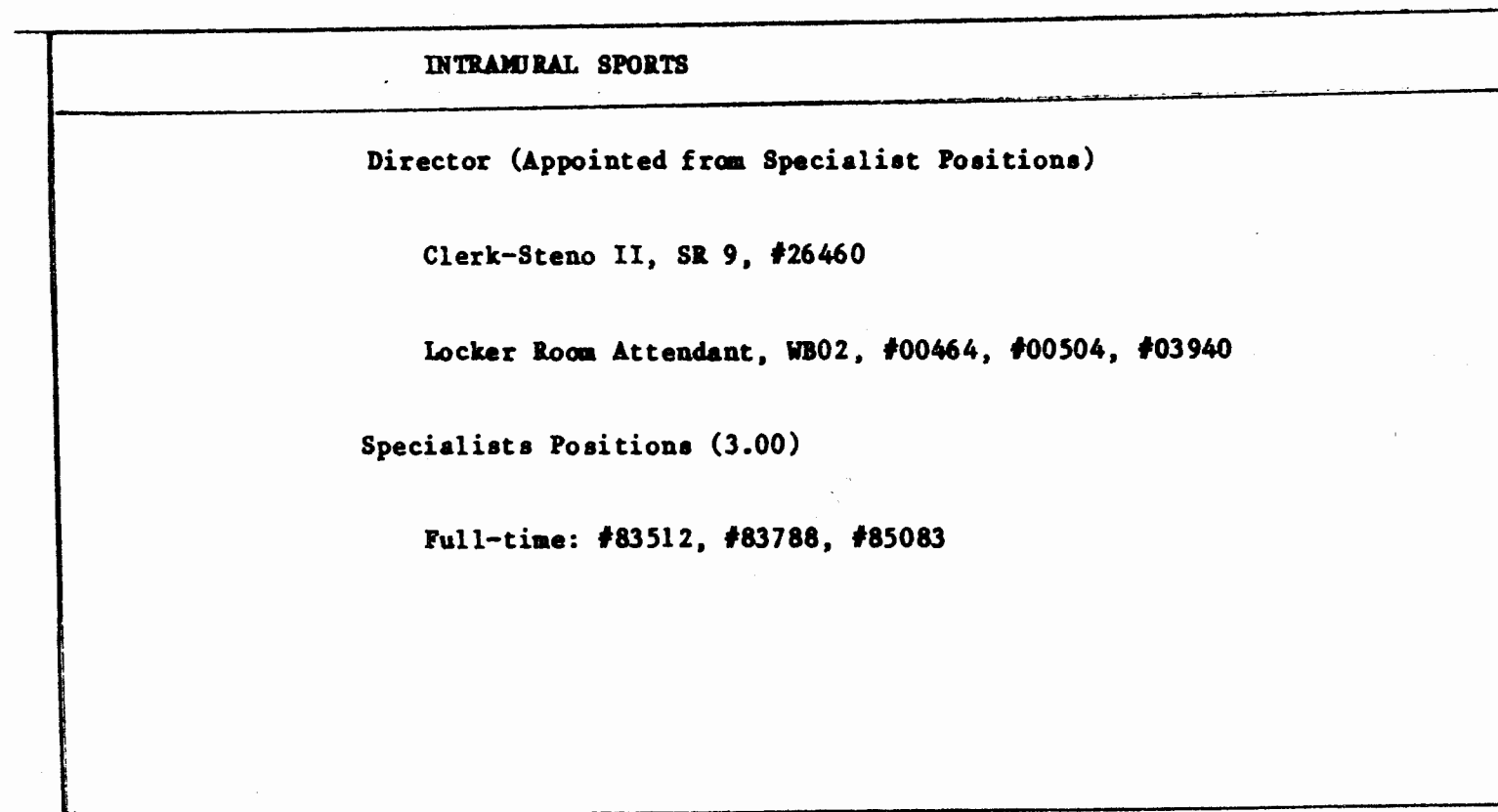
023 148
3

STATE OF HAWAII
UNIVERSITY OF HAWAII AT MANOA
COLLEGE OF EDUCATION
INTRAMURAL SPORTS



POSITION ORGANIZATION CHART

Chart ~~IXA~~ VIII A



Rev, 1984 update

CHART UPDATED

DATE SEP 1988

STATE OF HAWAII
UNIVERSITY OF HAWAII AT MANOA
COLLEGE OF EDUCATION
SPECIAL EDUCATION

OFFICE OF THE
DEAN

POSITION ORGANIZATION CHART

Chart ~~X~~ IX

DEPARTMENT OF SPECIAL EDUCATION

Chairman (Appointed from Instructional Positions)

Secretary II, SR 12, #15141

Instructional Positions (7.00)

Full-time: #82069, #82575, #83987, #84307
#84625, #82894, #82664

Rev - 1985 update

CHART UPDATED

SEP 1988

STATE OF HAWAII
UNIVERSITY OF HAWAII AT MANOA
COLLEGE OF EDUCATION
EDUCATIONAL PSYCHOLOGY

OFFICE OF THE
DEAN

Position Organization Chart

Chart ~~XI~~ X

DEPARTMENT OF EDUCATIONAL PSYCHOLOGY

Chairman (Appointed from Instructional Positions)

Secretary II, SR 12, #11895

Instructional Positions (8.25)

Full-time: #82571, #82095, #82105
#84004, #84141, #82276

Part-time: #85208 (.25), #88180 (.50), #82193 (.50)
#89034 (.50), #88588 (.50)

Rev, 1989 update

CHART UPDATED

DATE SEP 1988

STATE OF HAWAII
UNIVERSITY OF HAWAII AT MANOA
COLLEGE OF EDUCATION
FIELD SERVICES

OFFICE OF THE
DEAN

POSITION ORGANIZATION CHART

Chart XII XI

OFFICE OF FIELD SERVICES

Director (Appointed from Instructional Positions)

Secretary II, SR 12, #12977

Instructional Positions (7.50)

Full-time: #82229, #82360, #82484, #82897
#83204, #83473, #84191

Part-time: #83872 (.50)

Rev. 1989 update

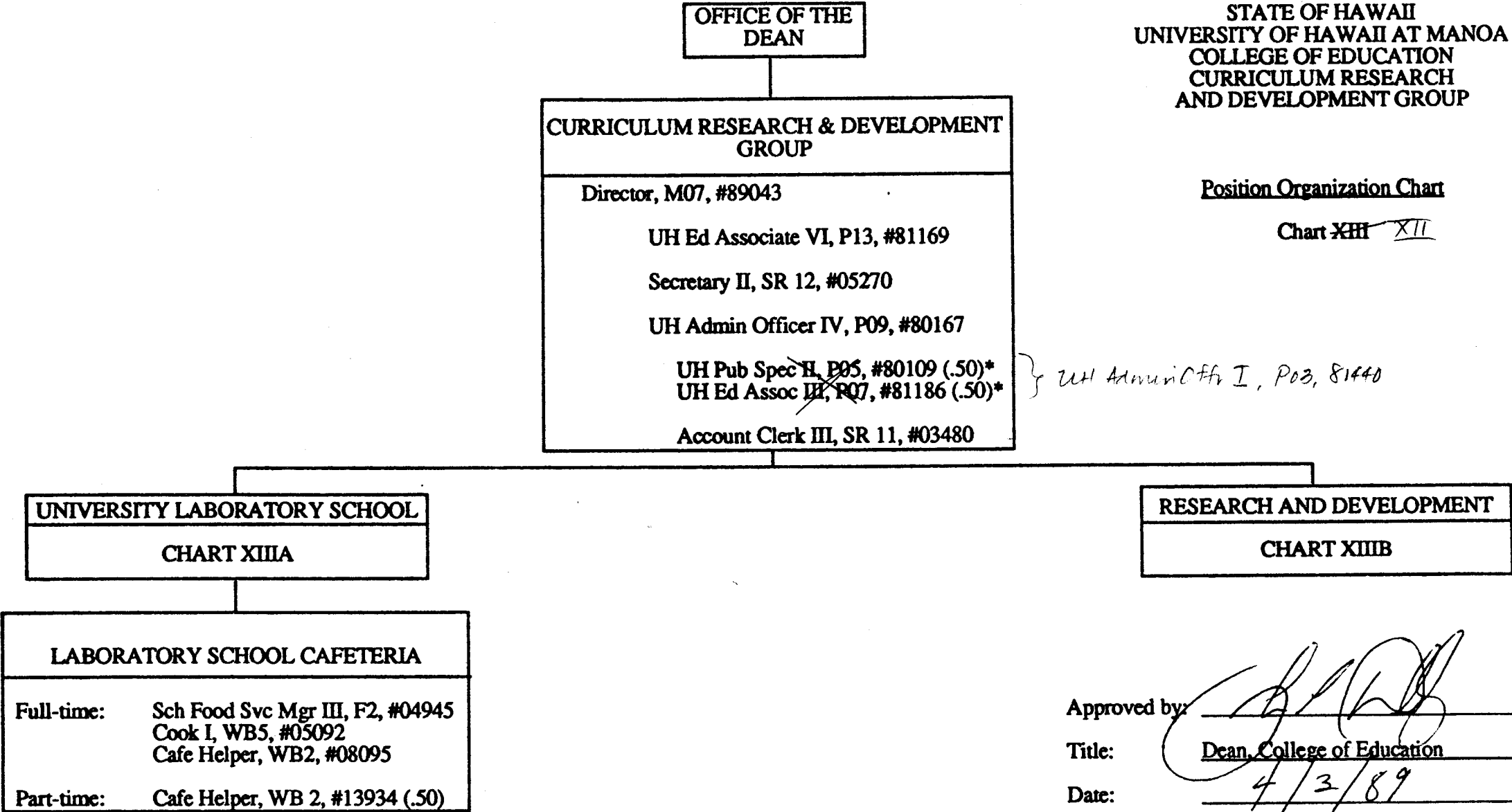
CHART UPDATED

DATE SEP 1988

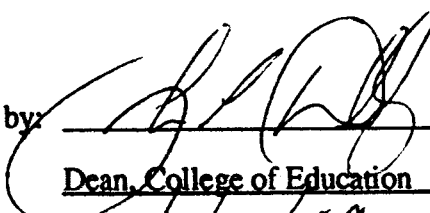
STATE OF HAWAII
UNIVERSITY OF HAWAII AT MANOA
COLLEGE OF EDUCATION
CURRICULUM RESEARCH
AND DEVELOPMENT GROUP

Position Organization Chart

Chart ~~XIII~~ XII



*To be redesigned

Approved by: 
Title: Dean, College of Education
Date: 4/3/89

Rev per 1989 update

STATE OF HAWAII
UNIVERSITY OF HAWAII AT MANOA
COLLEGE OF EDUCATION
CURRICULUM RESEARCH
AND DEVELOPMENT GROUP

Position Organization Chart

Chart XIII

OFFICE OF THE
DEAN

CURRICULUM RESEARCH & DEVELOPMENT
GROUP

Director, M07, #89043

UH Educational Associate VI, P13, #81169

Secretary II, SR 12, #05270

UH Admin. Officer IV, P09, #80167

Account Clerk III, SR 11, #03480

UNIVERSITY LABORATORY SCHOOL

CHART XIII A

RESEARCH AND DEVELOPMENT

CHART XIII B

LABORATORY SCHOOL CAFETERIA

Full-time: Sch Food Svc Mgr III, F2, #04945
Cook I, WB5, #05092
Cafe Helper, WB2, #08095

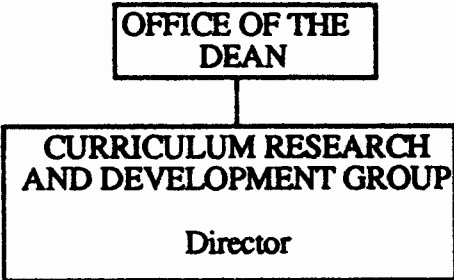
Part-time: Cafe Helper, WB 2, #13934 (.50)

Revised due to req.
4/3/89

CHART UPDATED

DATE SEP 1988

STATE OF HAWAII
UNIVERSITY OF HAWAII AT MANOA
COLLEGE OF EDUCATION
CURRICULUM RESEARCH
AND DEVELOPMENT GROUP



Position Organization Chart

Chart XIII-A X11A

UNIVERSITY LABORATORY SCHOOL	
Principal (Appointed from Instructional Positions) ←	
Secretary II, SR 12, #00783 Clerk-Typist II, SR 08, #36690	
Instructional Positions (1.65)	
Part-time:	[Admintr-Univ Lab Sch & Prof, M05, #89257 (.90) Assoc Prof, #82154 (.20); #83227 (.05), 84608.10 Asst Prof, #84377 (.30), #82793 (.20), 82160 (.15)
Administrative, Professional, Technical Positions (11.80) 13.85	
Full-time:	UH Ed Assoc V, P11, #80480
Part-time:	UH Ed Assoc VI, P13, #80470 (.20), #80476 (.05), #80435 (.15) UH Ed Assoc V, P11, #80468 (.15), #80466 (.25), #80482 (.10) UH Ed Assoc IV, P09, #81170 (.75), #80433 (.85), #80484 (.90), #80481 (.25), #80917 (.15), #80418 (.15), #80474 (.30), #80993 (.80), #80472 (.50), #80494 (.25), 80482 (.40) UH Ed Assoc III, P07, #80420 (.50), #80491 (.80), #80434 (.75), 80485 (.50), 80483 (.30) UH Ed Assoc II, P05, #80483 (.30), #80849 (.30), #80485 (.50), #80465 (.80), 80481 (.90), 80494 (.90) UH Ed Assoc I, P03, #80464 (.80), #81811 (.25)

Rev per 1989 update

STATE OF HAWAII
UNIVERSITY OF HAWAII AT MANOA
COLLEGE OF EDUCATION
CURRICULUM RESEARCH
AND DEVELOPMENT GROUP

Position Organization Chart

Chart XIII A

OFFICE OF THE
DEAN

CURRICULUM RESEARCH
AND DEVELOPMENT GROUP

Director

UNIVERSITY LABORATORY SCHOOL

Principal (Appointed from Instructional Positions)

Secretary II, SR 12, #00783
Clerk-Typist II, SR 08, #36690

Instructional Positions (1.65)

Part-time: Admintr-Univ Lab Sch & Prof, M05, #89257 (.90)
Assoc Prof, #82154 (.20); #83227 (.05)
Asst Prof, #84377 (.30), #82793 (.20)

Administrative, Professional, Technical Positions (11.80)

Full-time: UH Ed Assoc V, P11, #80480

Part-time: UH Ed Assoc VI, P13, #80470 (.20), ~~#80476 (.05)~~, #80435 (.15)
UH Ed Assoc V, P11, #80468 (.15), #80466 (.25), #80482 (.10)
UH Ed Assoc IV, P09, #81170 (.75), #80433 (.85), #80484 (.90), #80481 (.25), #80917 (.15), #80418 (.15), #80474 (.30), #80993 (.80),
#80472 (.50), #80494 (.25)
UH Ed Assoc III, P07, #80420 (.50), #80491 (.80), #80434 (.75)
UH Ed Assoc II, P05, #80483 (.30), #80849 (.30), #80485 (.50), #80465 (.80)
UH Ed Assoc I, P03, #80464 (.80), #81811 (.25)

Revised due to reorg. 4/3/89

CHART/UPDATE

DATE ~~SEP~~ 1988

OFFICE OF THE
DEAN

CURRICULUM RESEARCH
AND DEVELOPMENT GROUP

Director

STATE OF HAWAII
UNIVERSITY OF HAWAII AT MANOA
COLLEGE OF EDUCATION
CURRICULUM RESEARCH
AND DEVELOPMENT GROUP

Position Organization Chart

Chart ~~XHB~~ XII B

RESEARCH AND DEVELOPMENT

Instructional Positions (12.85)

Full-time: Professor, #84031, #83951, #82272, #84608
Asst Prof, #82387M, #84077, #83380, #82160, #82950

Part-time: Admintr-Univ Lab Sch & Prof, M05, #89257 (.10)
Professor, #82141M (.50)
Assoc Prof, #83227 (.95), #82154 (.80), 84608 (.90)
Asst Prof, #82793 (.80), #84377 (.70), 82160 (.85)

Administrative, Professional, Technical Positions (17.95) 15.90

Full-time: UH Ed Assoc VI, P13, #80486, #80495, #80443
UH Ed Assoc V, P11, #80440
UH Ed Assoc III, P07, #80228, #80476

Part-time: UH Ed Assoc VI, P13, #80476 (.95), #80470 (.80), #80435 (.85)
UH Ed Assoc V, P11, #80468 (.85), #80482 (.90), #80466 (.75)
UH Ed Assoc IV, P09, #80484 (.10), #80917 (.85), #80993 (.20), #80481 (.75), #80494 (.75), #80474 (.70),
#80418 (.85), #80472 (.50), #80433 (.15), 80482 (.60)
UH Ed Assoc III, P07, #80420 (.50), #80491 (.20), 80485 (.50), 80483 (.70)
UH Ed Assoc II, P05, #80483 (.70), #80465 (.20), #80485 (.50), #80849 (.70), 80481 (.10), 80494 (.10)
UH Ed Assoc I, P03, #80464 (.20) (.20)

Clerk-Typist III, SR 10, #35206

Rev per 1989 update

STATE OF HAWAII
UNIVERSITY OF HAWAII AT MANOA
COLLEGE OF EDUCATION
CURRICULUM RESEARCH
AND DEVELOPMENT GROUP

Position Organization Chart

Chart XIIIIB

OFFICE OF THE
DEAN

CURRICULUM RESEARCH
AND DEVELOPMENT GROUP

Director

RESEARCH AND DEVELOPMENT

Instructional Positions (12.85)

Full-time: Professor, #84031, #83951, #82272, #84608
Asst Prof, #82387M, #84077, #83380, #82160, #82950

Part-time: Admintr-Univ Lab Sch & Prof, M05, #89257 (.10)
Professor, #82141M (.50)
Assoc Prof, #83227 (.95), #82154 (.80)
Asst Prof, #82793 (.80), #84377 (.70)

Administrative, Professional, Technical Positions (18.95)

Full-time: UH Ed Assoc VI, P13, #80486, #80495, #80443
UH Ed Assoc V, P11, #80440
UH Ed Assoc III, P07, #80228

Part-time: UH Ed Assoc VI, P13, #80476 (.95), #80470 (.80), #80435 (.85)
UH Ed Assoc V, P11, #80468 (.85), #80482 (.90), #80466 (.75)
UH Ed Assoc IV, P09, #80484 (.10), #80917 (.85), #80993 (.20), #80481 (.75), #80494 (.75), #80474 (.70),
#80418 (.85), #80472 (.50), #80433 (.15)
UH Ed Assoc III, P07, #80420 (.50), #81186 (.50), #80491 (.20)
UH Ed Assoc II, P05, #80483 (.70), #80465 (.20), #80485 (.50), #80849 (.70)
UH Ed Assoc I, P03, #80464 (.20)
UH Pub Spec II, P07, #80109 (.50)

Clerk-Typist III, SR 10, #35206

Revised due to req.
4/3/89

~~CHART UPDATED~~

0-16

1988