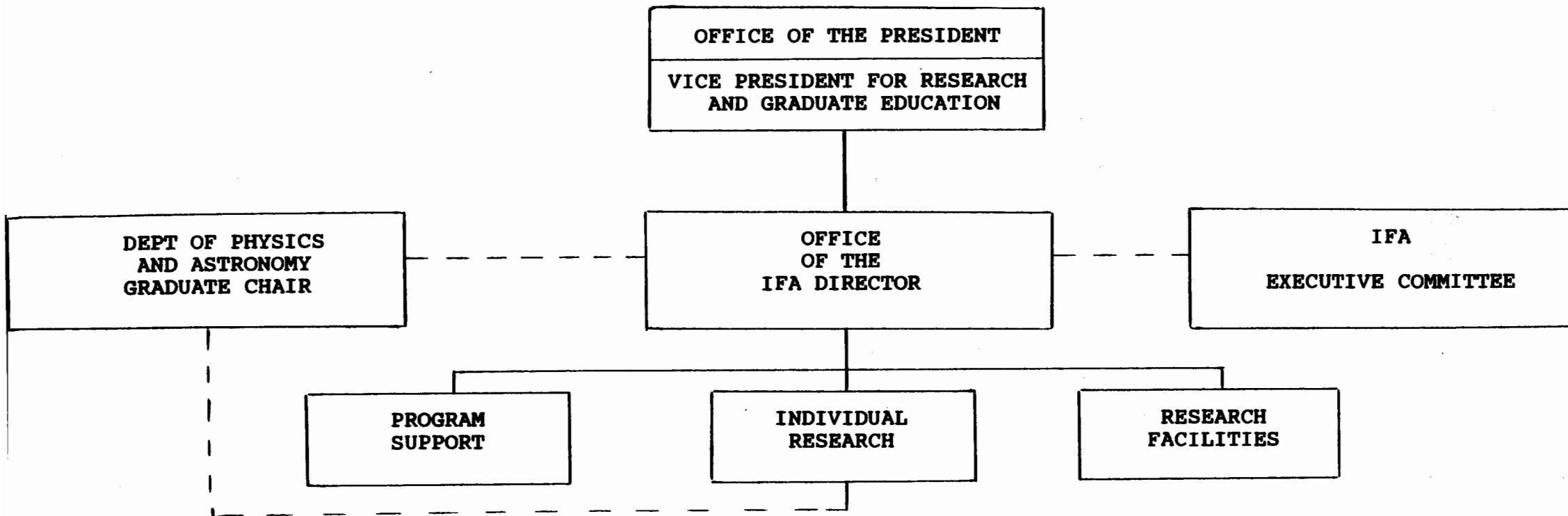


STATE OF HAWAII
UNIVERSITY OF HAWAII
UNIVERSITY OF HAWAII AT MANOA

INSTITUTE FOR ASTRONOMY
CHART I



Approved by:

Donald B. Gill

Title:

Director, Institute for Astronomy

Date:

March 18, 1988

CHART UPDATED

DATE SEP 1988

STATE OF HAWAII
UNIVERSITY OF HAWAII
UNIVERSITY OF HAWAII AT MANOA
INSTITUTE FOR ASTRONOMY
CHART IA

OFFICE OF THE PRESIDENT
VICE PRESIDENT FOR RESEARCH
AND GRADUATE EDUCATION

DEPT OF PHYSICS AND ASTRONOMY
GRADUATE CHAIR

OFFICE OF THE IFA DIRECTOR
CHART II

IFA
EXECUTIVE COMMITTEE

ASSISTANT DIRECTOR
PROGRAM SUPPORT

CHART IV

ADMINISTRATION
FISCAL SUPPORT
DIVISION

CHART IVA

ENGINEERING
INSTR SUPPORT
DIVISION

CHART IVB

MAUNA KEA
SUPPORT SERVICES

CHART IVC

HALEAKALA
SUPPORT SERVICES

CHART IVD

SCIENTIFIC
SUPPORT SERVICES
DIVISION

CHART IVE

INDIVIDUAL
RESEARCH DIVISION

CHART III

SOLAR
RESEARCH DIVISION

CHART VA

FLIGHT PROJECTS
DIVISION

CHART VC

IRTF

CHART VE

PLANETARY
RESEARCH DIVISION

CHART VB

INSTR/DETECTOR
DEVELOPMENT
DIVISION

CHART VD

MAUNA KEA
TELESCOPES DIVISION

CHART VF

COMPUTING
FACILITIES
DIVISION

CHART VG

Approved by:

Title:

Donald B. Hall
Director, Institute for Astronomy

March 18, 1988

CHART UPDATED

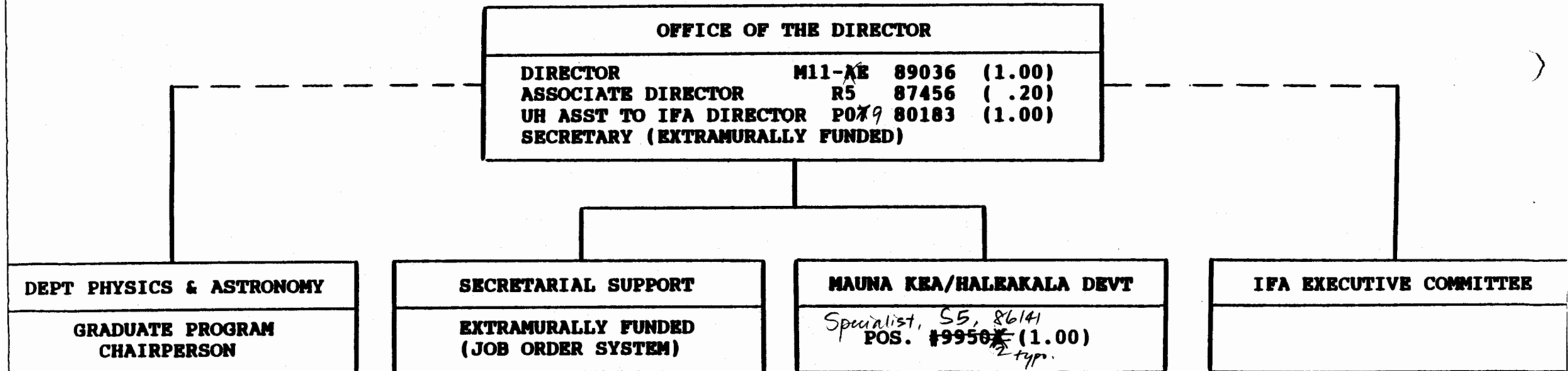
SEP

1988

DATE

STATE OF HAWAII
UNIVERSITY OF HAWAII
UNIVERSITY OF HAWAII AT MANOA

INSTITUTE FOR ASTRONOMY
CHART II



Approved by:

Donald R. Hull

Title:

Director, Institute for Astronomy

Date:

9/15/88

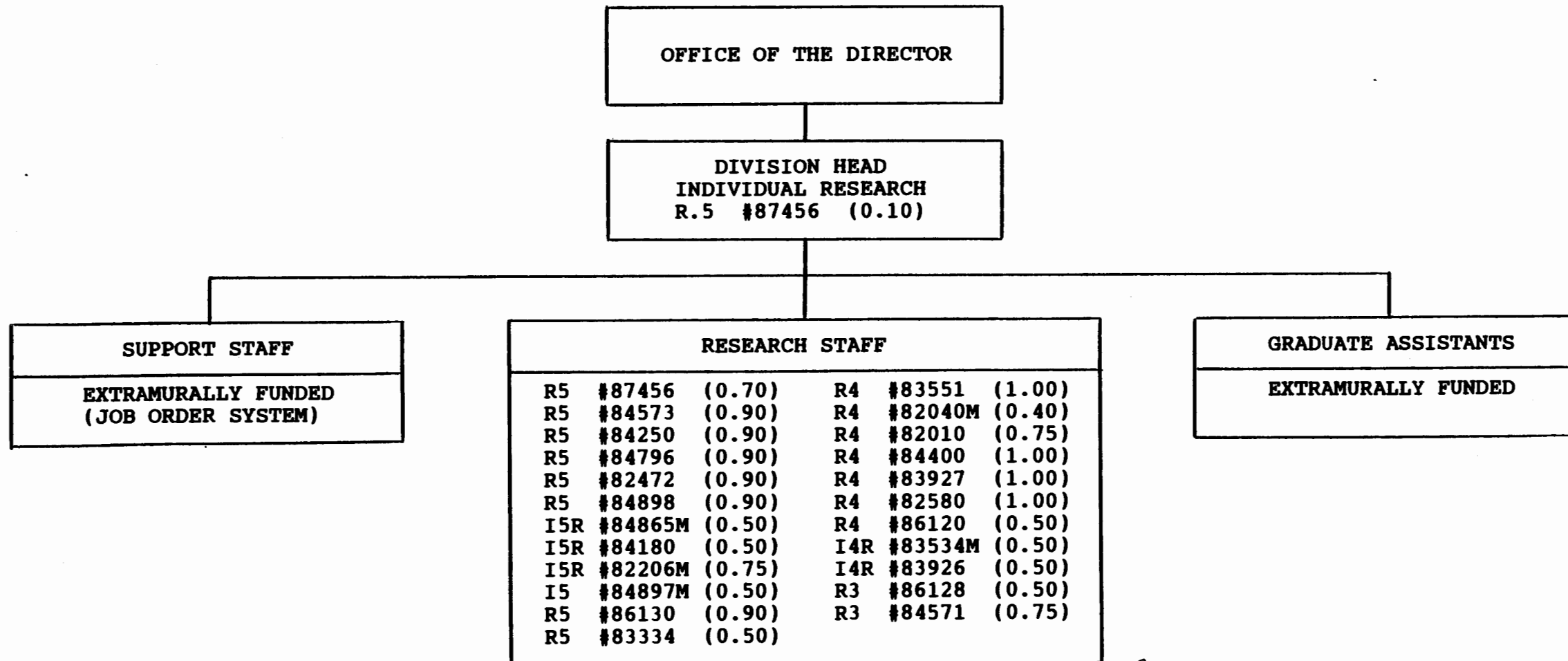
*Rev. per 1989
update*

CHART UPDATED

DATE SEP 1988

STATE OF HAWAII
UNIVERSITY OF HAWAII
UNIVERSITY OF HAWAII AT MANOA

INSTITUTE FOR ASTRONOMY
CHART III



Approved by:

Ronald B. Hall

Title:

Director, Institute for Astronomy

Date:

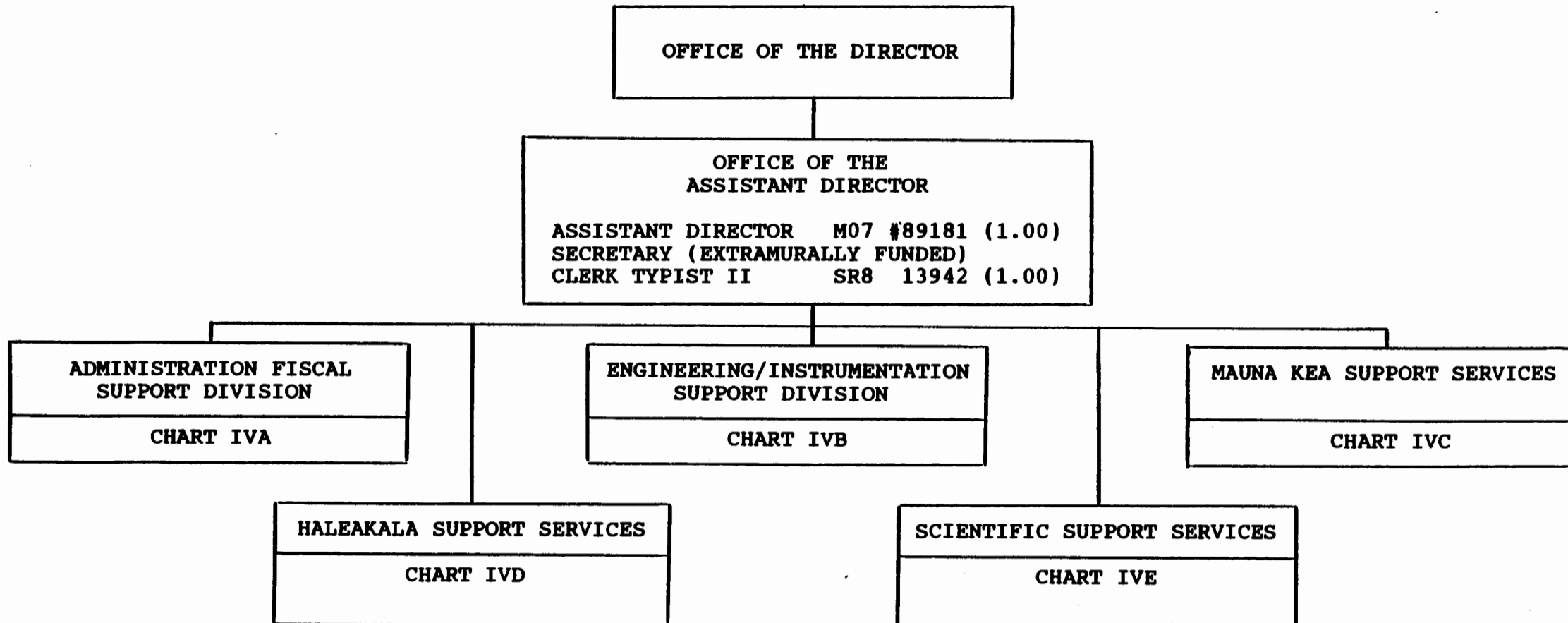
March 18, 1988

CHART UPDATED

DATE SEP 1988

STATE OF HAWAII
UNIVERSITY OF HAWAII
UNIVERSITY OF HAWAII AT MANOA

INSTITUTE FOR ASTRONOMY
CHART IV



Approved by:

Ronald B. Hull

Title:

Director, Institute for Astronomy

Date:

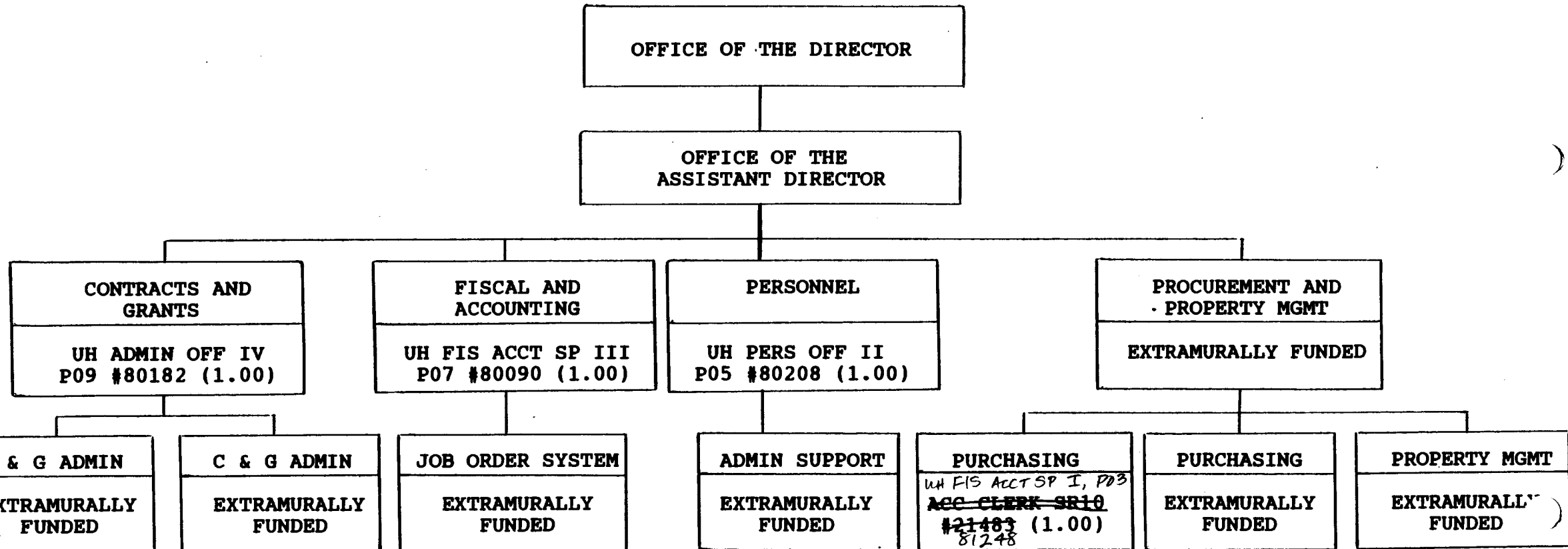
March 18, 1988

CHART UPDATED

DATE SEP 1988

STATE OF HAWAII
UNIVERSITY OF HAWAII
UNIVERSITY OF HAWAII AT MANOA

INSTITUTE FOR ASTRONOMY
CHART IVA



Approved by:

Donald B. Hull

Title:

Director, Institute for Astronomy

Date:

March 18, 1988

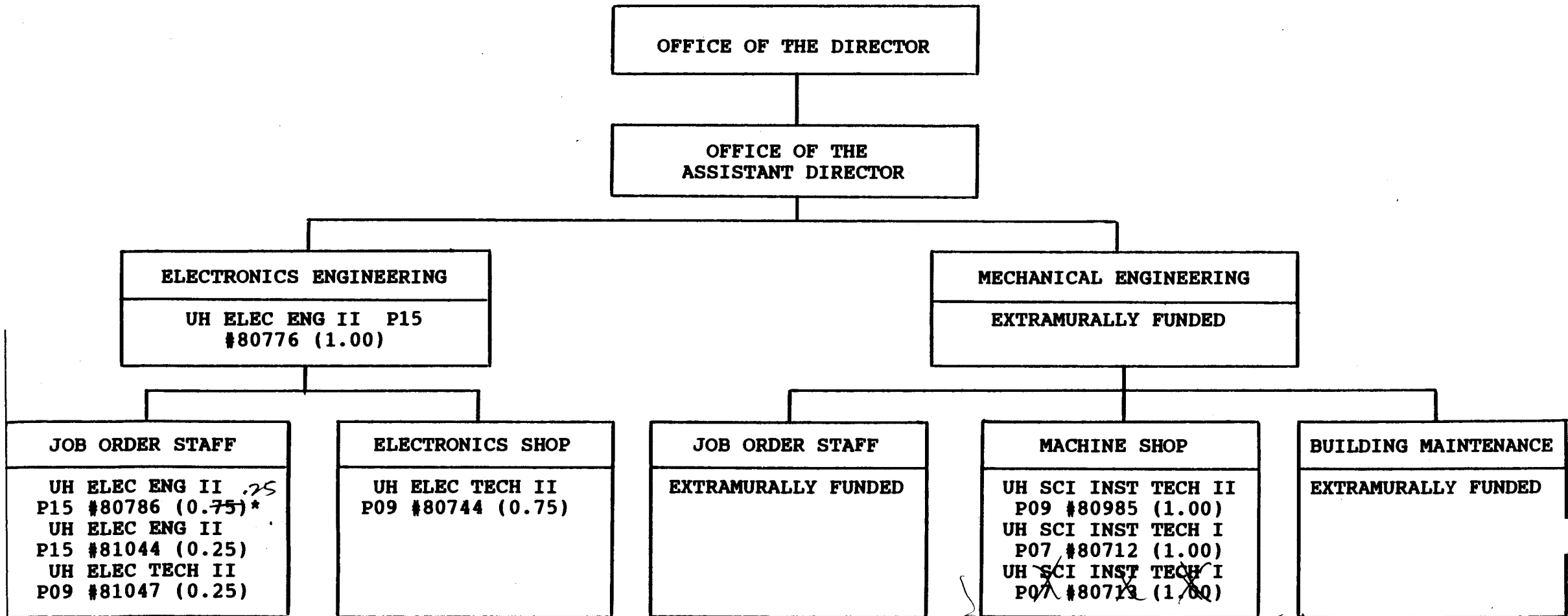
Rev per 1989 update

CHART UPDATED

DATE SEP 1988

STATE OF HAWAII
UNIVERSITY OF HAWAII
UNIVERSITY OF HAWAII AT MANOA

INSTITUTE FOR ASTRONOMY
CHART IVB



UH Elec Eng II, P15, #81515 .50
UH Photographer, P04, 80695.50 *

transferred to
Chart IVB (Should not have
been part of update
reorg req'd.)

To be Varianced from UH Mech Eng II to UH Elec Eng II; position description is being re-written

Approved by:

Title:

Director, Institute for Astronomy

Date:

March 18, 1988

CHART UPDATED

DATE

SEP

1988

*To be redissid to UH EE II, P15

Revised per 1989 update

MAUNA KEA SUPPORT SERVICES

STATE OF HAWAII
UNIVERSITY OF HAWAII
UNIVERSITY OF HAWAII AT MANOA

INSTITUTE FOR ASTRONOMY
CHART IVC

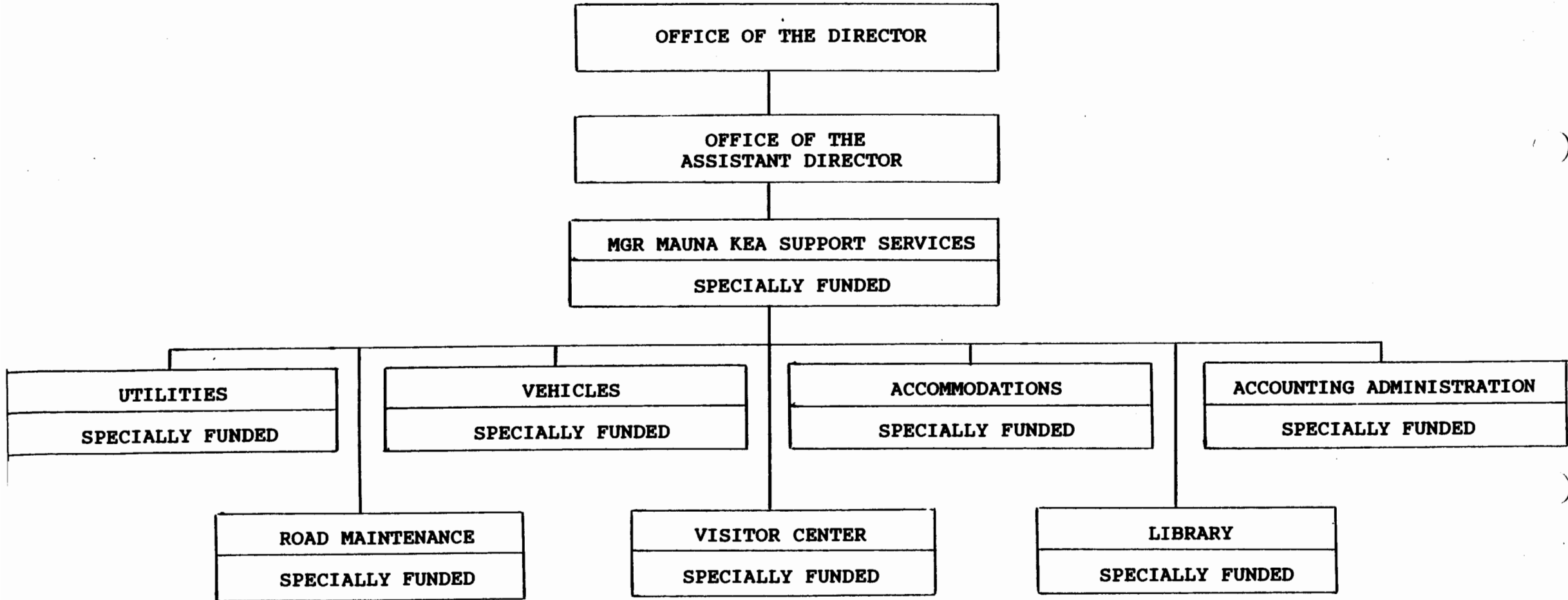


CHART UPDATED
DATE SEP 1988

Approved by: *Ronald B. Hall*
Title: Director, Institute for Astronomy
Date: March 18, 1988

STATE OF HAWAII
UNIVERSITY OF HAWAII
UNIVERSITY OF HAWAII AT MANOA

INSTITUTE FOR ASTRONOMY
CHART IVD

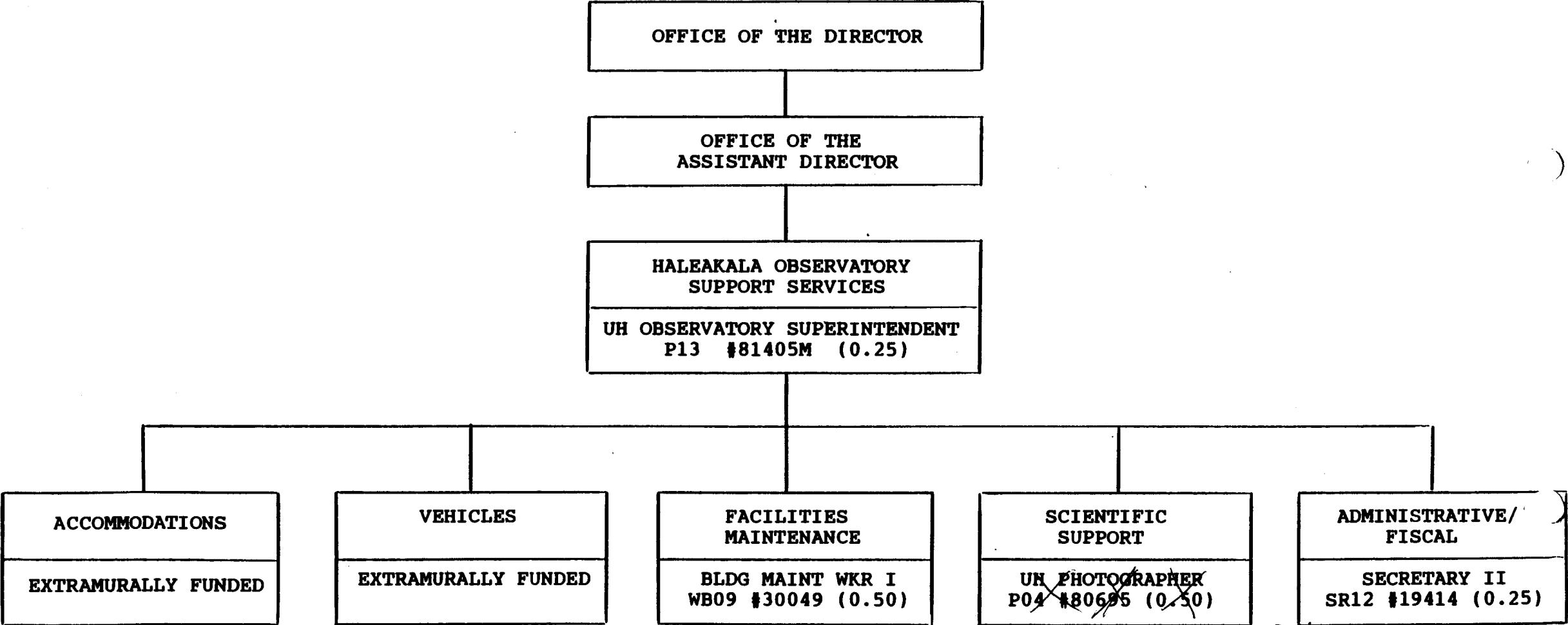


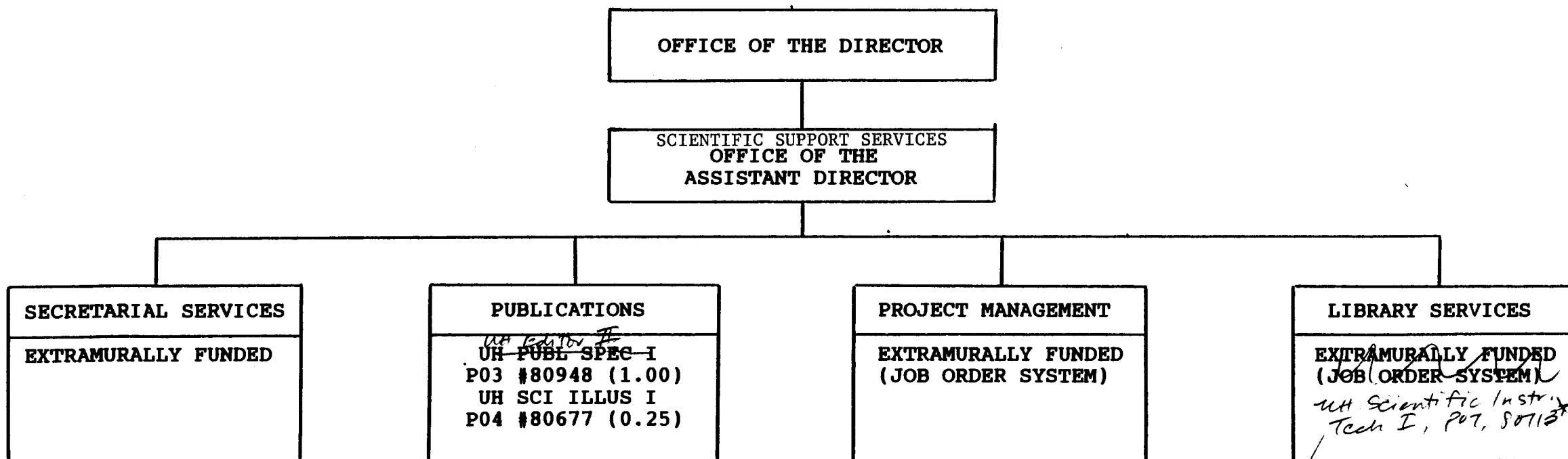
CHART UPDATED
DATE SEP 1988

Rev. per 1989
update.

Approved by: *Ronald B. Bell*
Title: Director, Institute for Astronomy
Date: March 18, 1988

STATE OF HAWAII
UNIVERSITY OF HAWAII
UNIVERSITY OF HAWAII AT MANOA

INSTITUTE FOR ASTRONOMY
CHART IVE



* To be reclassified, pending approval of variance, to Librarian, 05-4

*Should not have been
part of update process -
very reg.*

Approved by:

Ronald B. Hall

*Revised per 1989
update*

Title:

Director, Institute for Astronomy

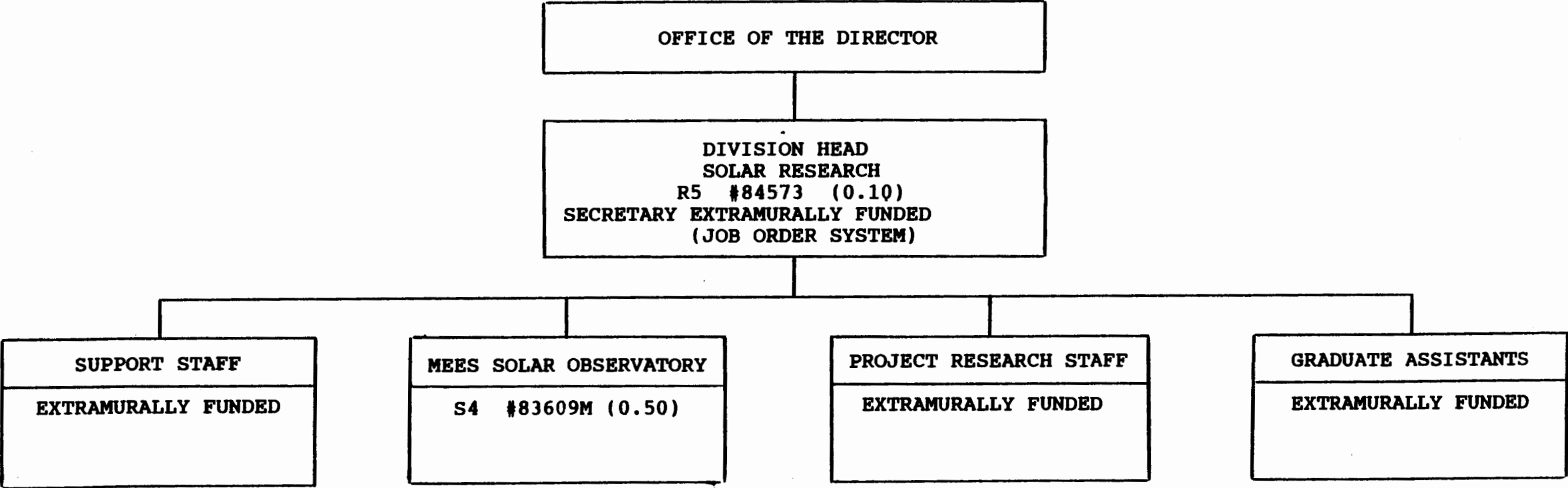
Date:

March 18, 1988

CHART UPDATED

DATE SEP 1988

STATE OF HAWAII
UNIVERSITY OF HAWAII
UNIVERSITY OF HAWAII AT MANOA
INSTITUTE FOR ASTRONOMY
CHART VA

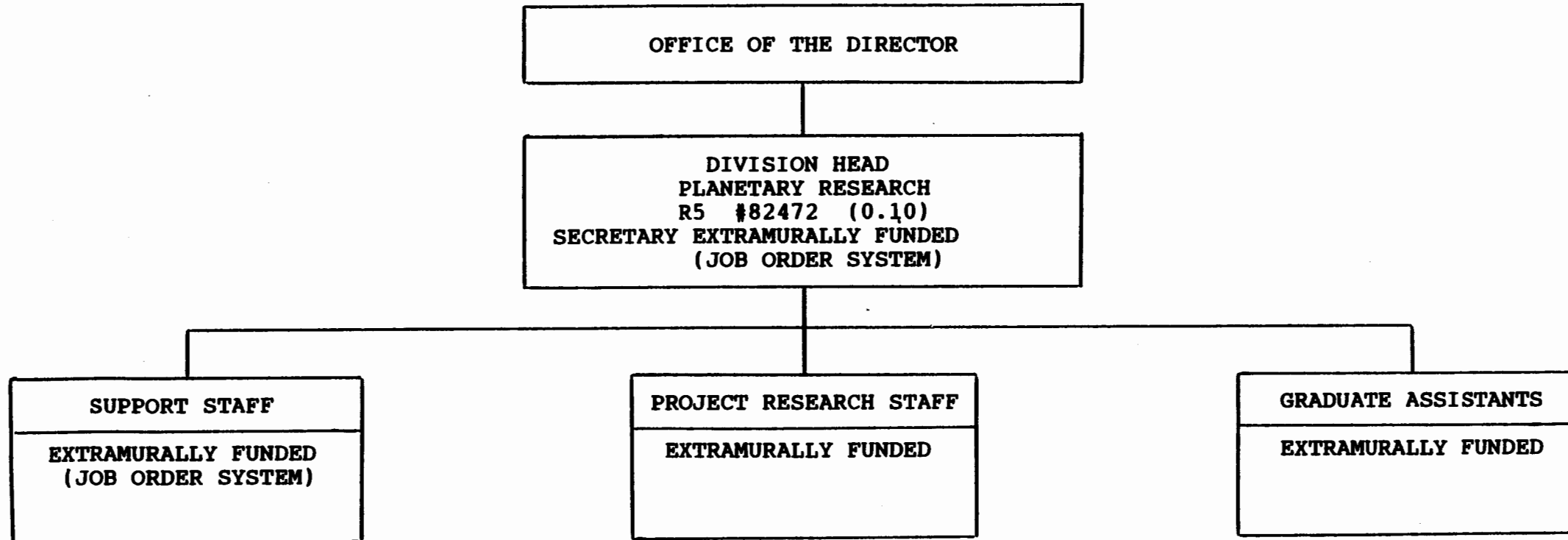


Approved by: *Donald R. Hill*
Title: Director, Institute for Astronomy
Date: March 18, 1988

CHART UPDATED
SEP 1988
DATE _____

STATE OF HAWAII
UNIVERSITY OF HAWAII
UNIVERSITY OF HAWAII AT MANOA

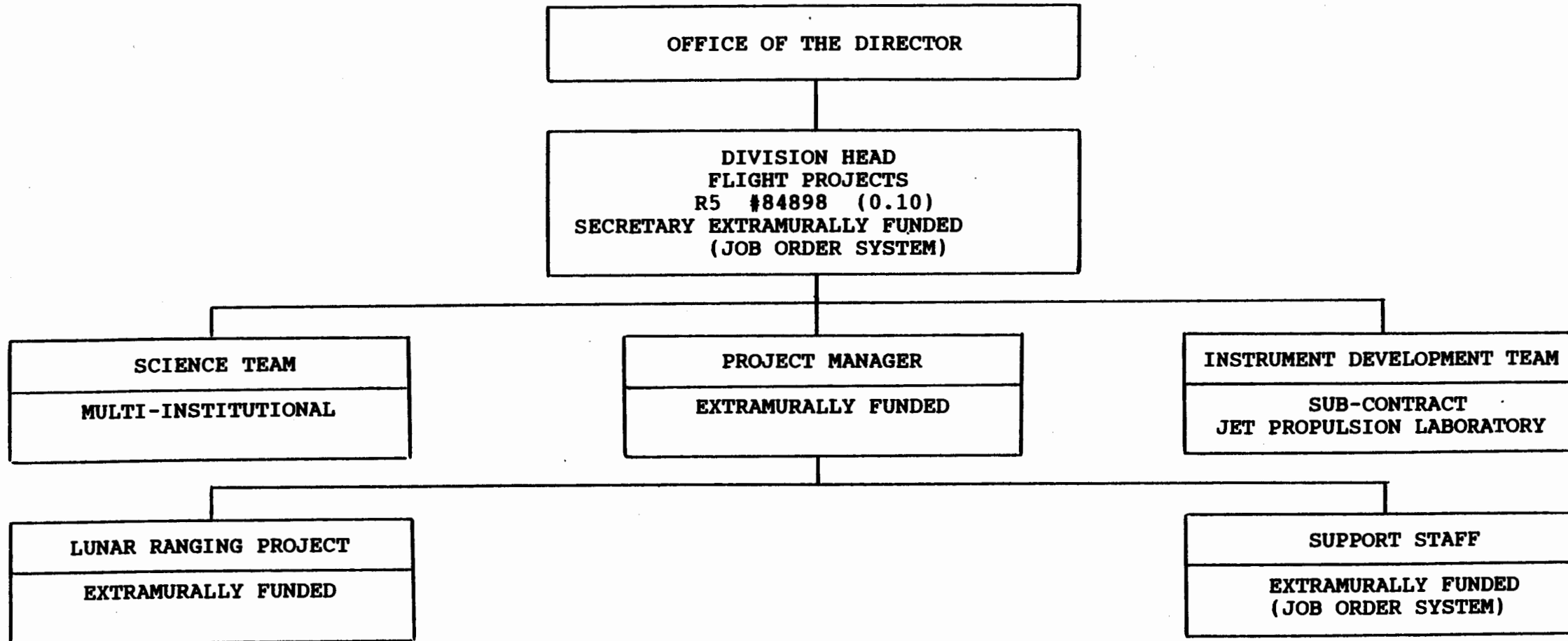
INSTITUTE FOR ASTRONOMY
CHART VB



Approved by: *Ronald B. Hall*
Title: Director, Institute for Astronomy
Date: March 18, 1988

CHART UPDATED
DATE SEP 1988

STATE OF HAWAII
UNIVERSITY OF HAWAII
UNIVERSITY OF HAWAII AT MANOA
INSTITUTE FOR ASTRONOMY
CHART VC



Approved by:

Ronald B. Hall

Title:

Director, Institute for Astronomy

Date:

March 18, 1988

CHART UPDATED

DATE SEP 1988

STATE OF HAWAII
UNIVERSITY OF HAWAII
UNIVERSITY OF HAWAII AT MANOA

INSTITUTE FOR ASTRONOMY
CHART VD

OFFICE OF THE DIRECTOR

DIVISION HEAD
INSTRUMENT/DETECTOR DEVELOPMENT
R5 #86130 (0.10)
SECRETARY EXTRAMURALLY FUNDED
(JOB ORDER SYSTEM)

STAFF INSTRUMENTATION SUPPORT

EXTRAMURALLY FUNDED
(JOB ORDER SYSTEM)

ADVANCED DEVELOPMENT TECHNOLOGY

S4 #99505 Site Char R5, 86143 (1.00)
S4 #99507 Detector Phys, R3 86142 (1.00)
UH ELEC ENG II P15 #81044 (0.25)
UH ELEC TECH II P09 #81047 (0.25)

FACILITY INSTRUMENTATION SUPPORT

EXTRAMURALLY FUNDED
(JOB ORDER SYSTEM)

Approved by:

Title:

Date:

Ronald B. Hall

Director, Institute for Astronomy

9/15/88

Revised per 1987 update

CHART UPDATED

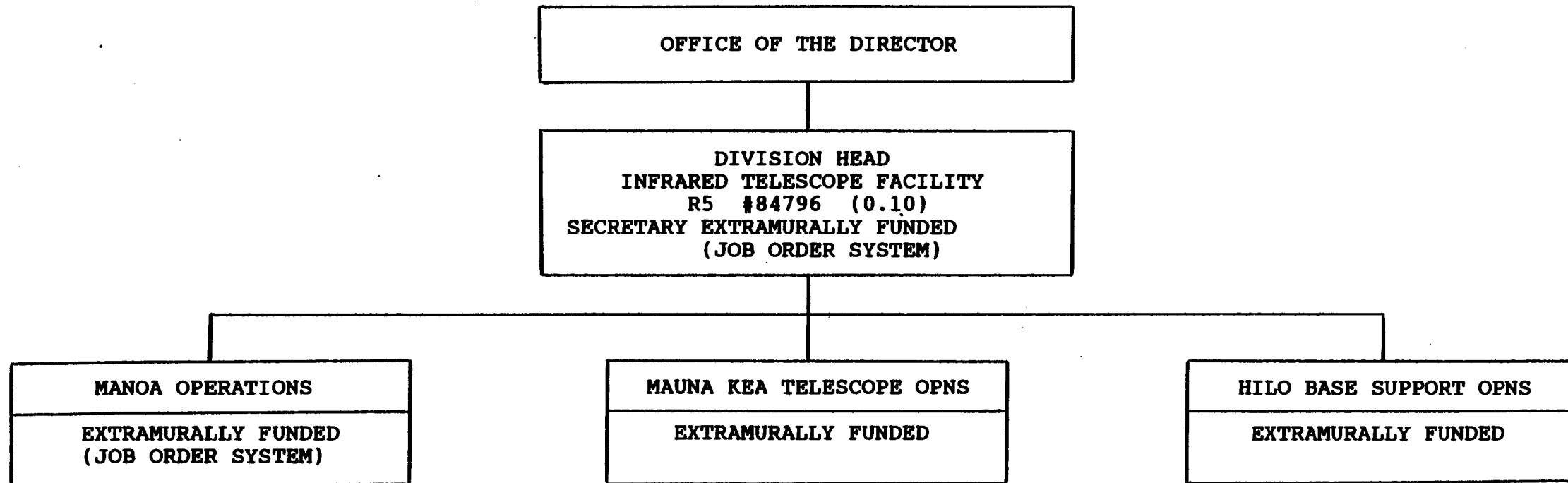
DATE

SER

1988

STATE OF HAWAII
UNIVERSITY OF HAWAII
UNIVERSITY OF HAWAII AT MANOA

INSTITUTE FOR ASTRONOMY
CHART VE



Approved by:

Ronald M. Ball

Title:

Director, Institute for Astronomy

Date:

March 18, 1988

CHART UPDATED

DATE

SEP

1988

STATE OF HAWAII
UNIVERSITY OF HAWAII
UNIVERSITY OF HAWAII AT MANOA

INSTITUTE FOR ASTRONOMY
CHART VF

OFFICE OF THE DIRECTOR

DIVISION HEAD
MAUNA KEA TELESCOPE OPNS
R5 #84250 (0.10)

MANOA OPERATIONS

EXTRAMURALLY FUNDED

TELESCOPE OPERATIONS

UH OBS TECH II P09 #80749 (0.50)
BLDG MAIN WKR I WB09A #25855 (1.00)

HILO BASE SUPPORT OPNS

EXTRAMURALLY FUNDED

Approved by:

Ronald B. Hill

Title:

Director, Institute for Astronomy

Date:

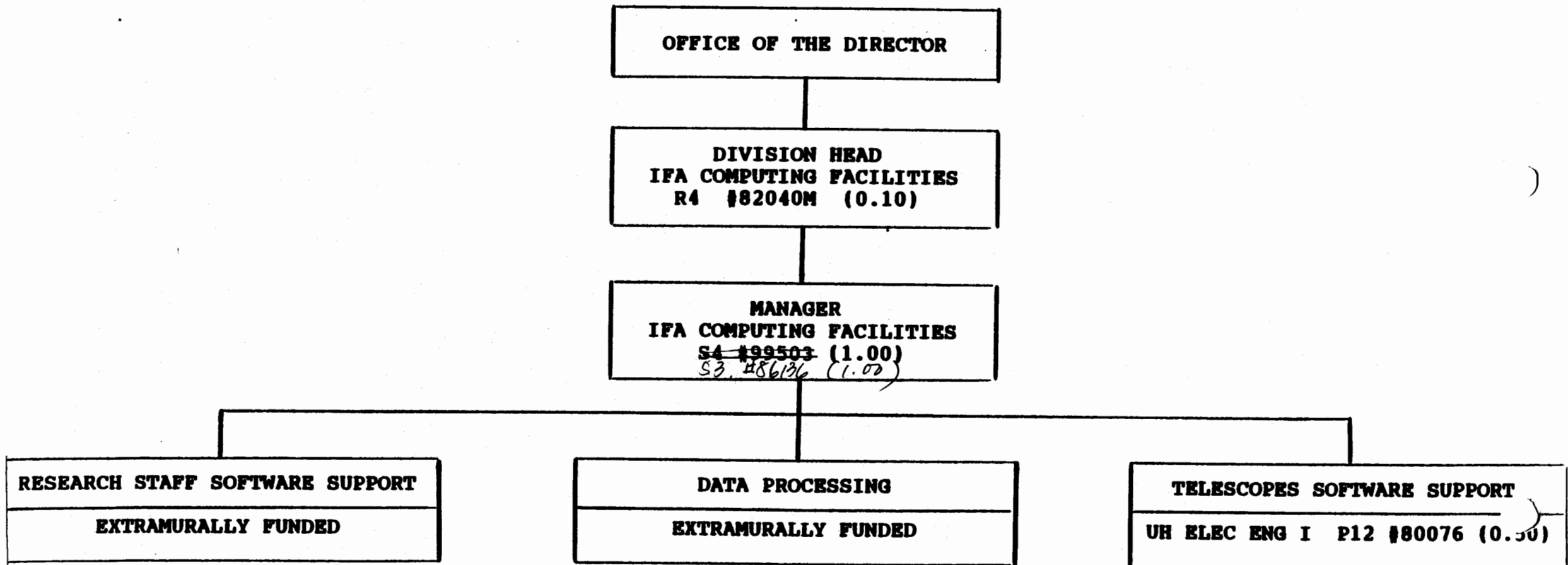
March 18, 1988

CHART UPDATED

DATE SEP 1988

STATE OF HAWAII
UNIVERSITY OF HAWAII
UNIVERSITY OF HAWAII AT MANOA

INSTITUTE FOR ASTRONOMY
CHART VG



Revised per 1989 update

CHART UPDATED

DATE SEP 1988

Approved by:

Title:

Date:

Ronald B. Hall

Director, Institute for Astronomy

9/15/88