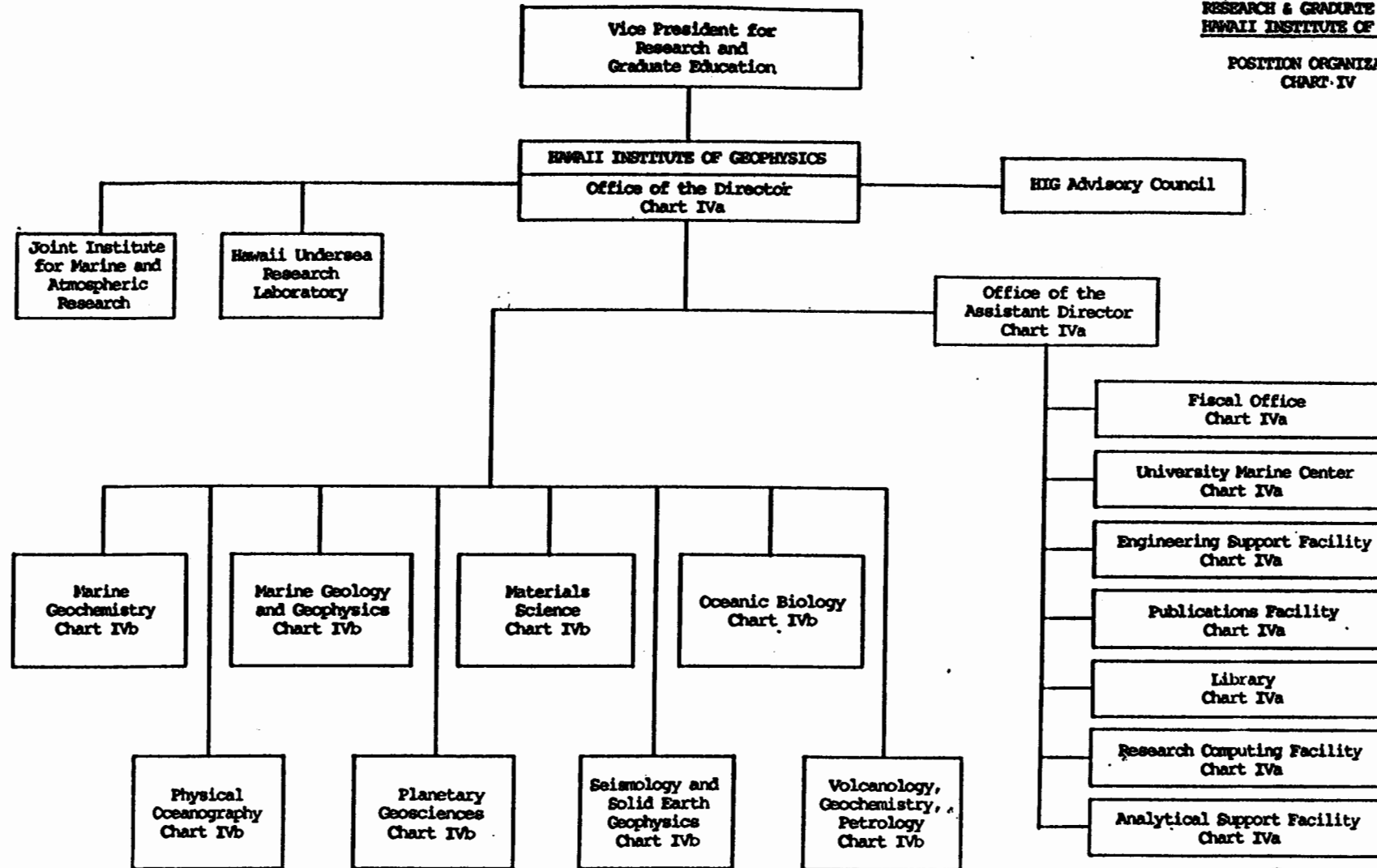


STATE OF HAWAII
UNIVERSITY OF HAWAII
UNIVERSITY OF HAWAII AT MANOA
RESEARCH & GRADUATE EDUCATION
HAWAII INSTITUTE OF GEOPHYSICS
POSITION ORGANIZATION
CHART IV



Revised 11/28/88
due to estab of
SOEST

CHART UPDATED

DATE SEP 1988

Approved By: Charles H. Hays

Title: Director, Hawaii Institute of Geophysics

Date: July 29, 1988

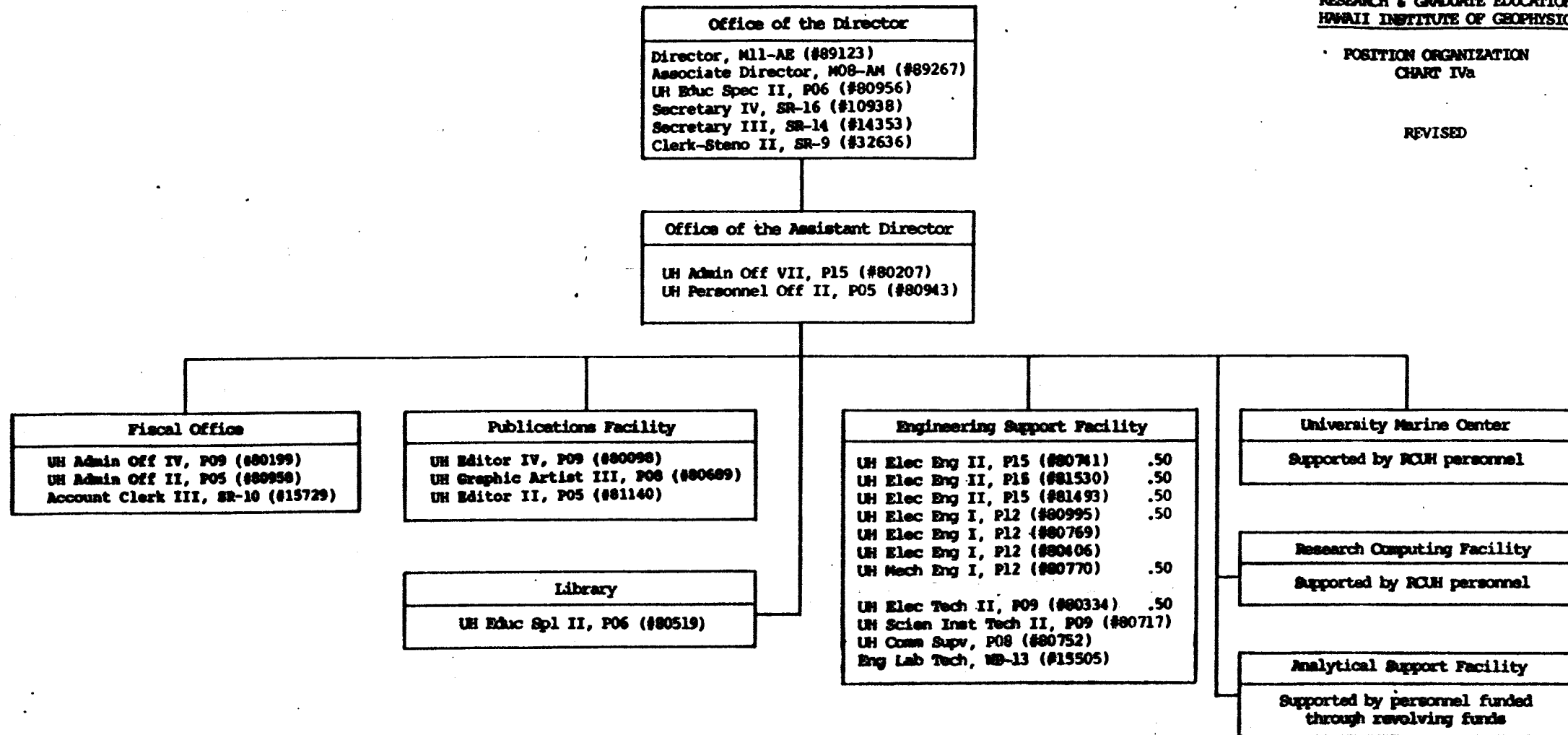
Date: September 9, 1988

Revised

STATE OF HAWAII
UNIVERSITY OF HAWAII
UNIVERSITY OF HAWAII AT MANOA
RESEARCH & GRADUATE EDUCATION
HAWAII INSTITUTE OF GEOPHYSICS

POSITION ORGANIZATION
CHART IVa

REVISED



Revised 11/28/88

CHART UPDATED

DATE SEP 1988

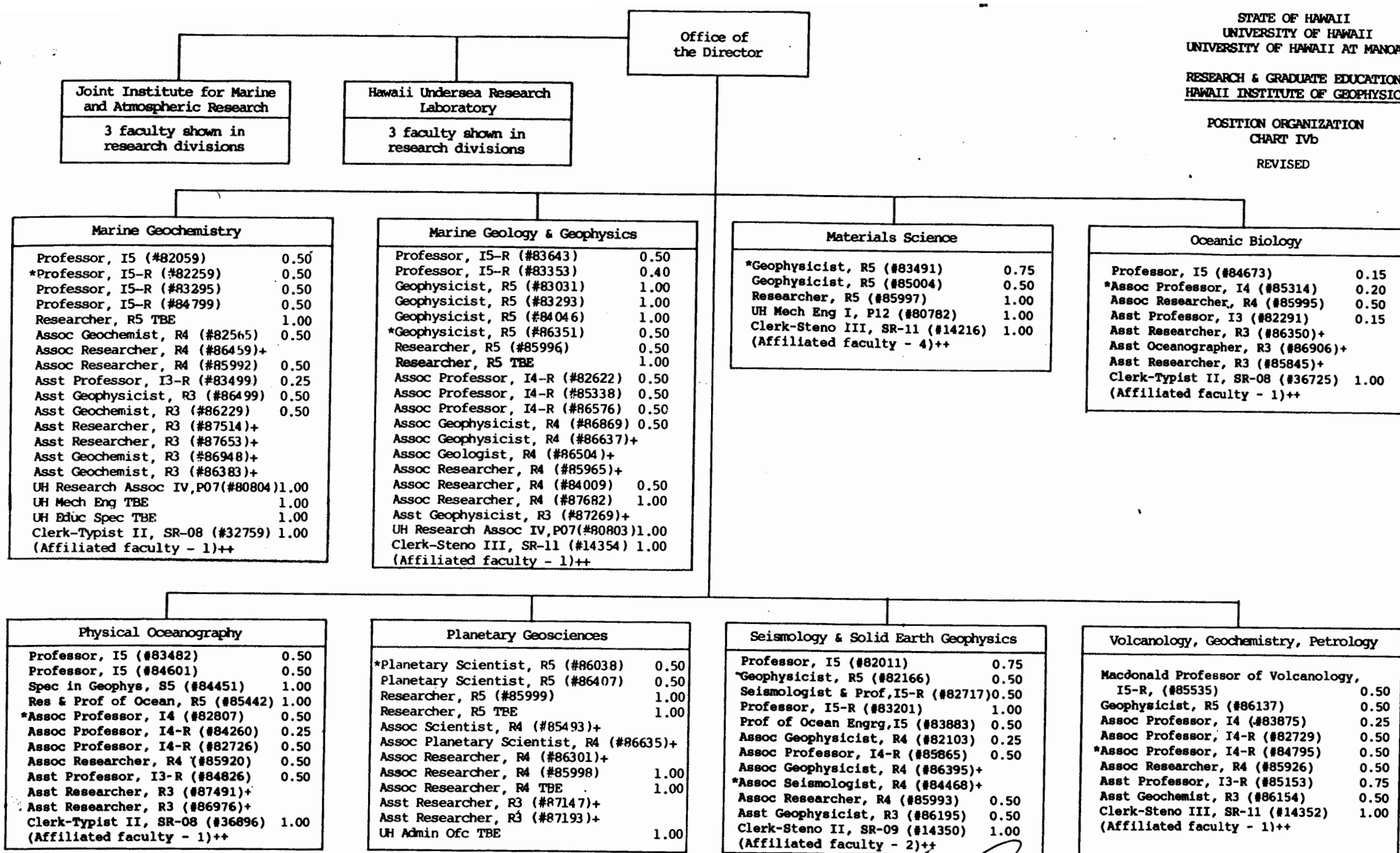
Approved By: *Charles E. Kelly*

Title: Director, Hawaii Institute of Geophysics

Date: July 29, 1988

Date: September 9, 1988

Revised



* Indicates current division chairman

+ Researcher supported from extramural funds

++ Researcher for whom HIG provides monetary, administrative or facilities support

TBE = To be established

Approved By: 

Date: July 29, 1988

Director, Hawaii
Title: Institute of Geophysics

Date: September 9, 1988

Revised

Revised
11/28/88
CHART UPDATED

DATE