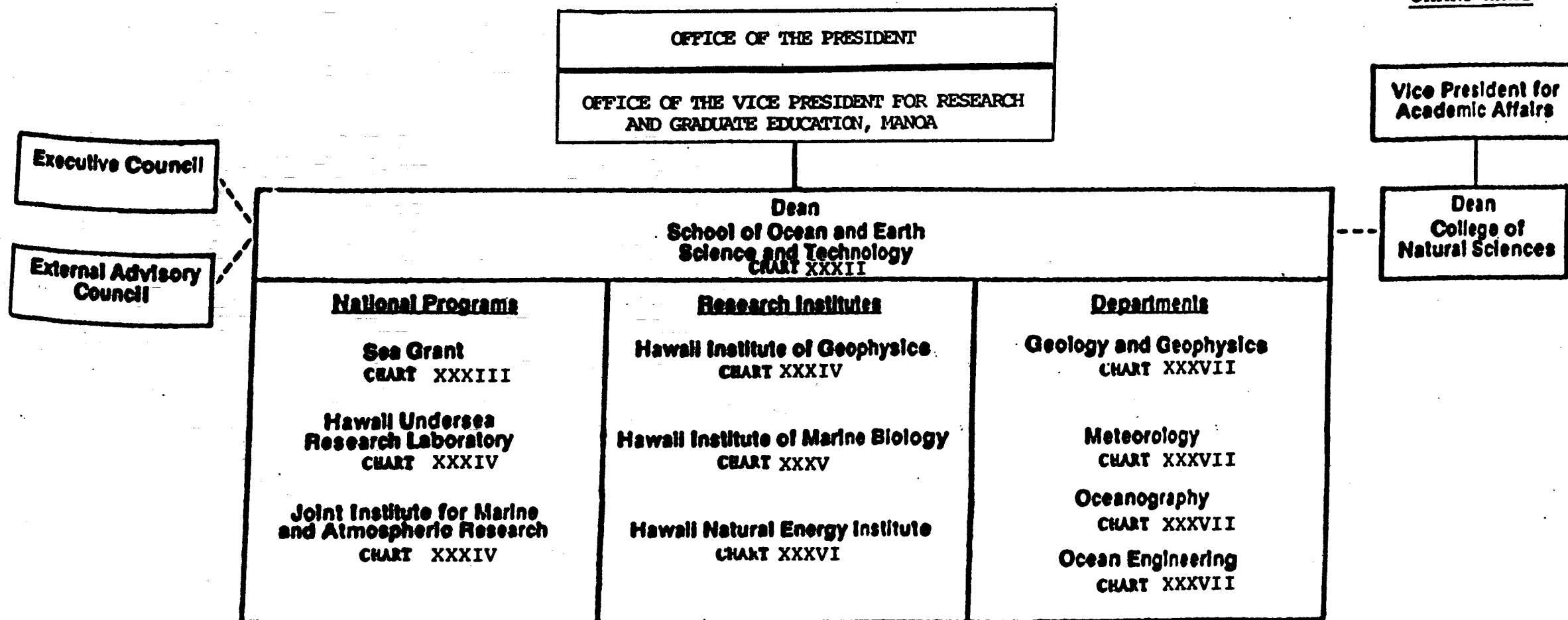


STATE OF HAWAII  
UNIVERSITY OF HAWAII

UNIVERSITY OF HAWAII AT MANOA  
SCHOOL OF OCEAN AND EARTH  
SCIENCE AND TECHNOLOGY

ORGANIZATION CHART  
CHART XXXI



APPROVED

*Albert J. Seniore*

President, University of Hawaii

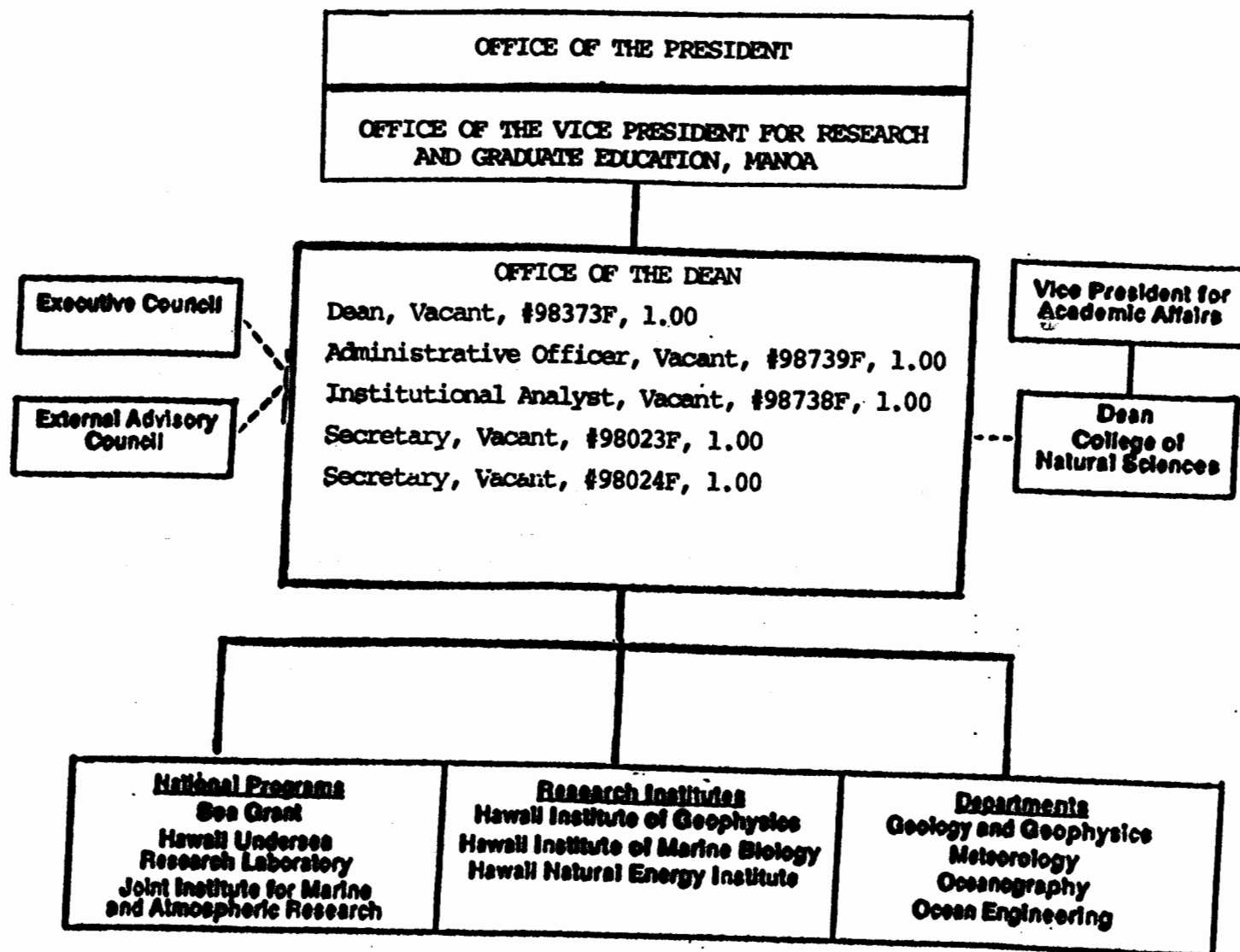
Date: NOV 28 1988

STATE OF HAWAII  
UNIVERSITY OF HAWAII

UNIVERSITY OF HAWAII AT MANOA

SCHOOL OF OCEAN AND EARTH  
SCIENCE AND TECHNOLOGY  
OFFICE OF THE DEAN

ORGANIZATION CHART  
CHART XXXII



APPROVED

*Albert J. Amore*

President, University of Hawaii

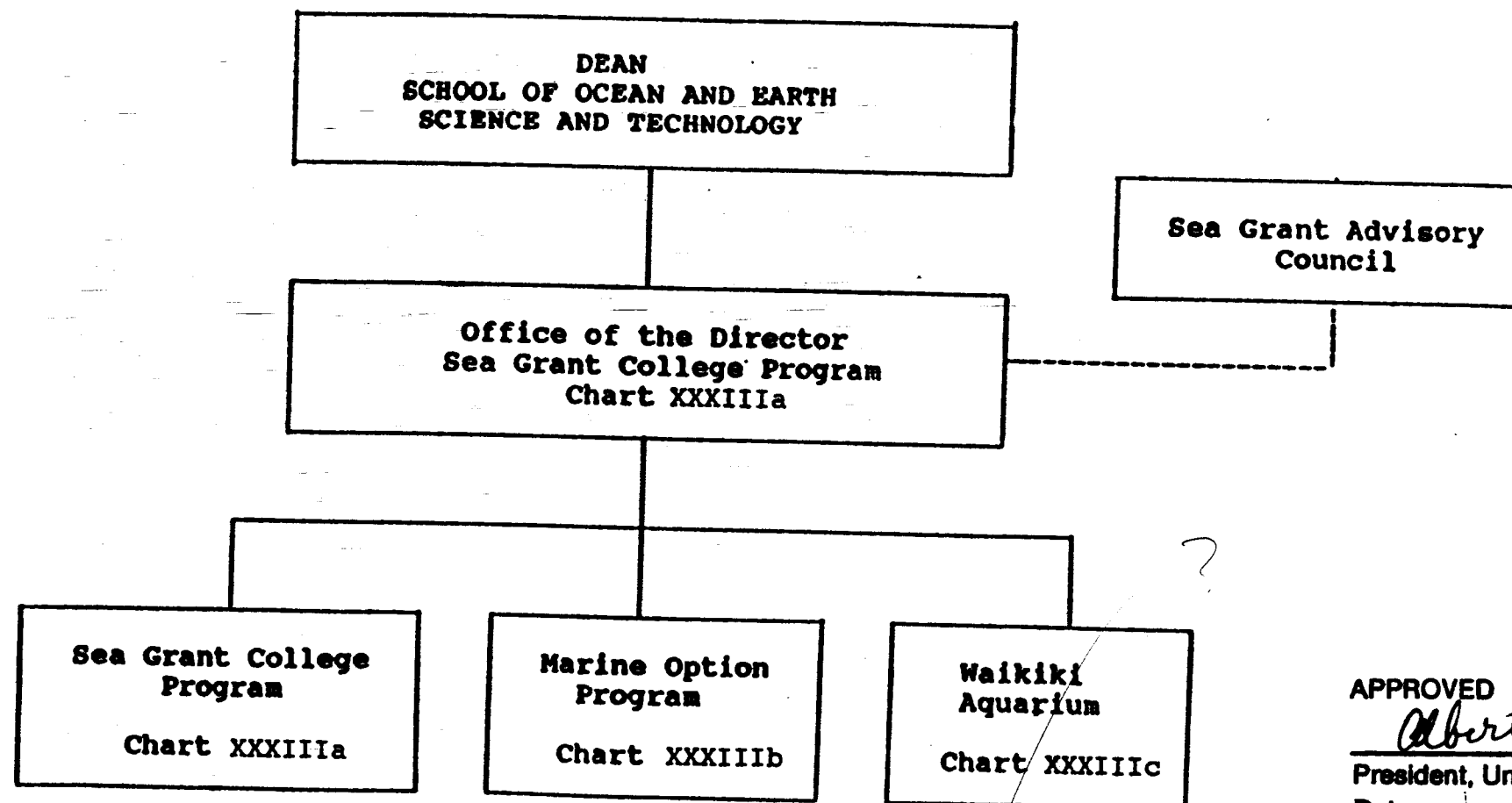
Date:

NOV 28 1988

STATE OF HAWAII  
UNIVERSITY OF HAWAII

UNIVERSITY OF HAWAII AT MANOA  
SEA GRANT COLLEGE PROGRAM

ORGANIZATION CHART  
CHART XXXIII

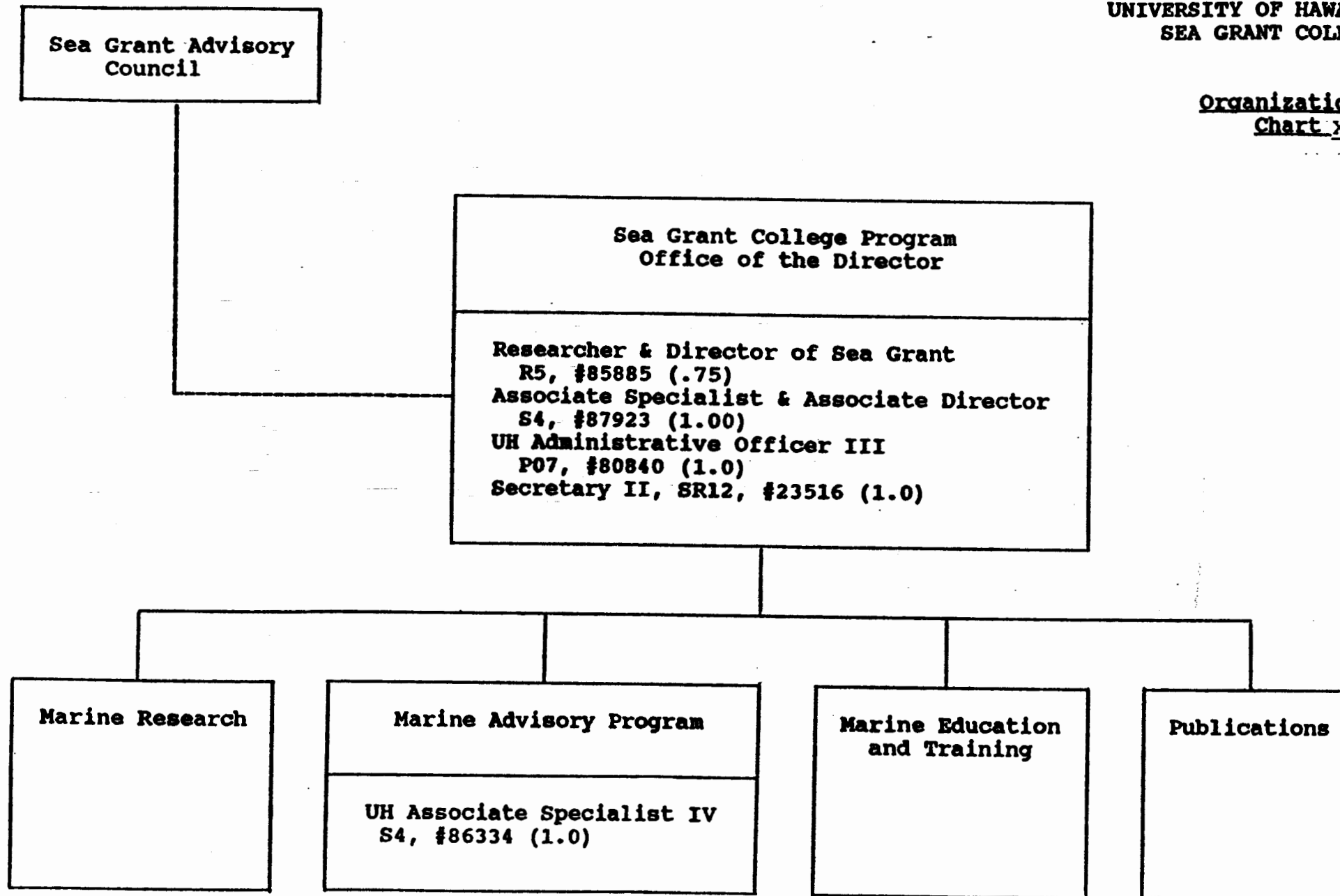


APPROVED

*Albert J. Simone*  
\_\_\_\_\_  
President, University of Hawaii

Date: \_\_\_\_\_ NOV 28 1988

Organization Chart  
Chart XXXIII-A



APPROVED

*Albert J. Simone*

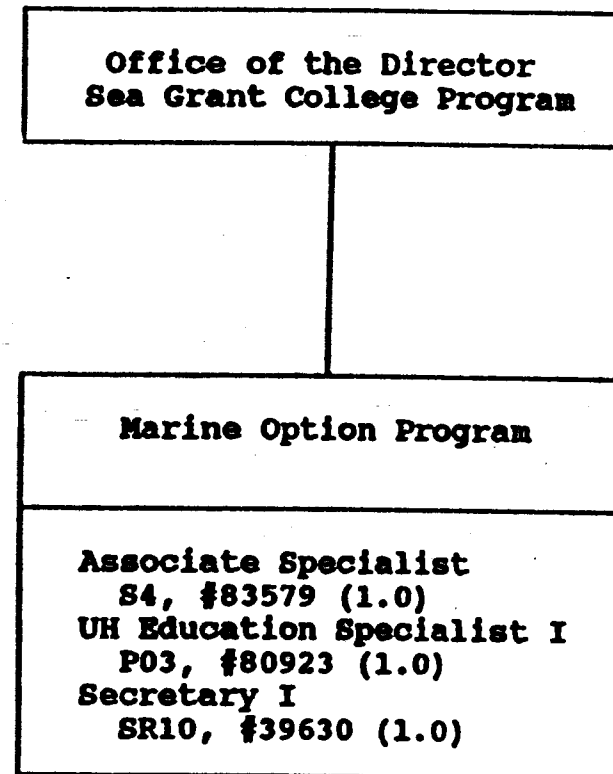
President, University of Hawaii

Date: NOV 28 1988

STATE OF HAWAII  
UNIVERSITY OF HAWAII

UNIVERSITY OF HAWAII AT MANOA  
SEA GRANT COLLEGE PROGRAM  
MARINE OPTION PROGRAM

Organization Chart  
Chart XXXIII-B

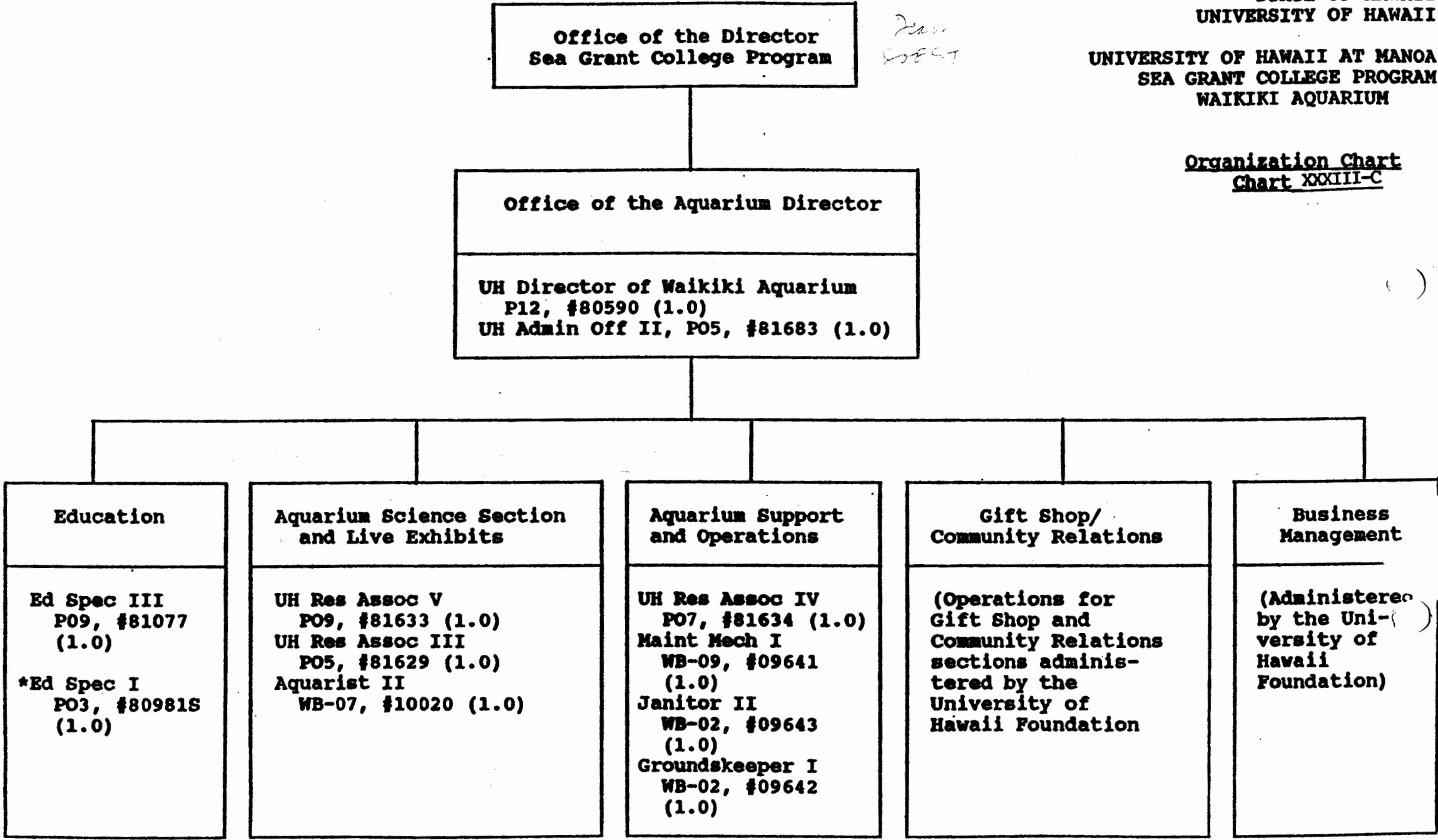


APPROVED

*Albert J. Simone*

President, University of Hawaii NOV 28 1988

Date: \_\_\_\_\_



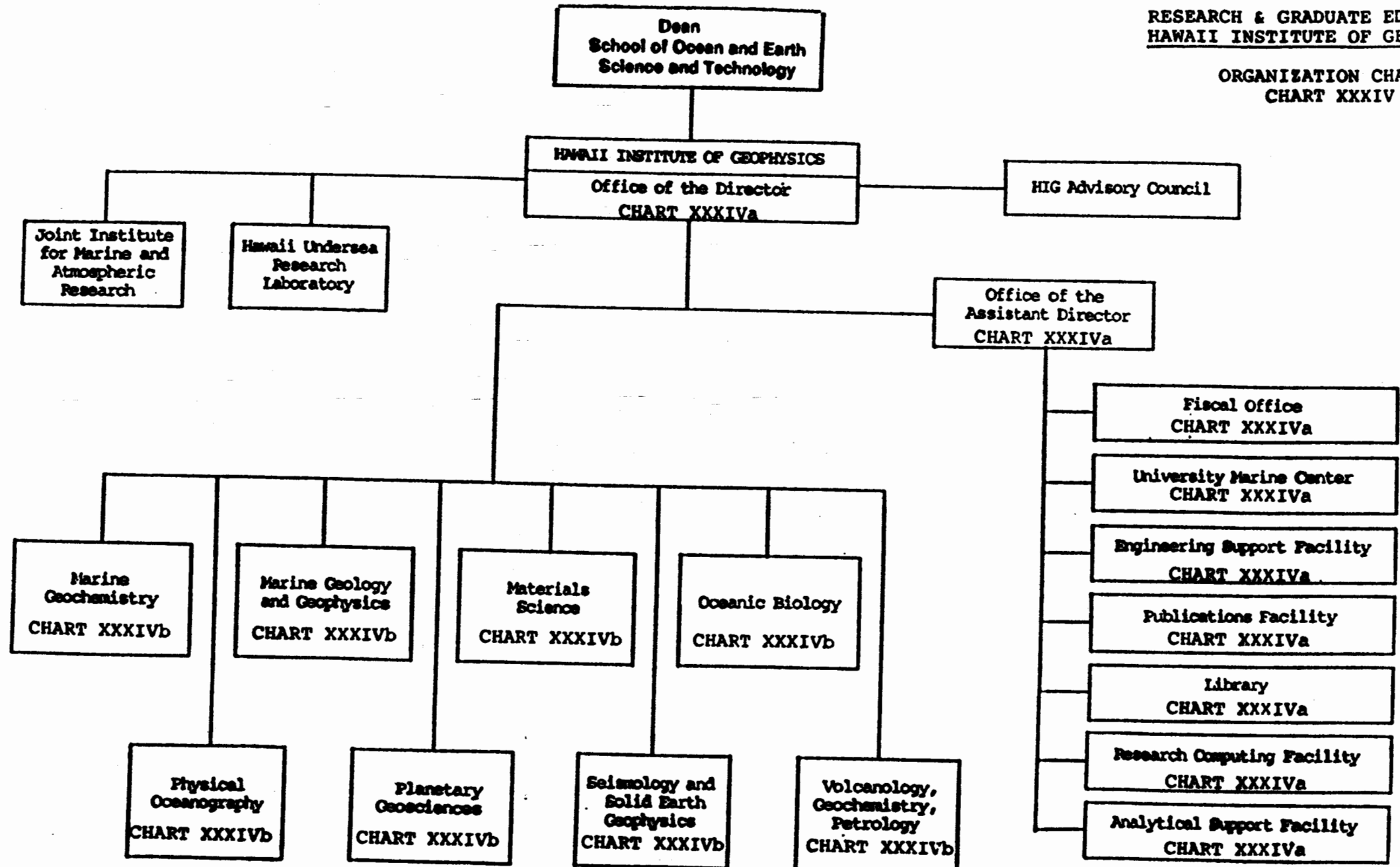
\*Temporary

APPROVED: Albert J. Seniore  
President, University of Hawaii  
Date: NOV 28 1988

STATE OF HAWAII  
UNIVERSITY OF HAWAII  
UNIVERSITY OF HAWAII AT MANOA

RESEARCH & GRADUATE EDUCATION  
HAWAII INSTITUTE OF GEOPHYSICS

ORGANIZATION CHART  
CHART XXXIV



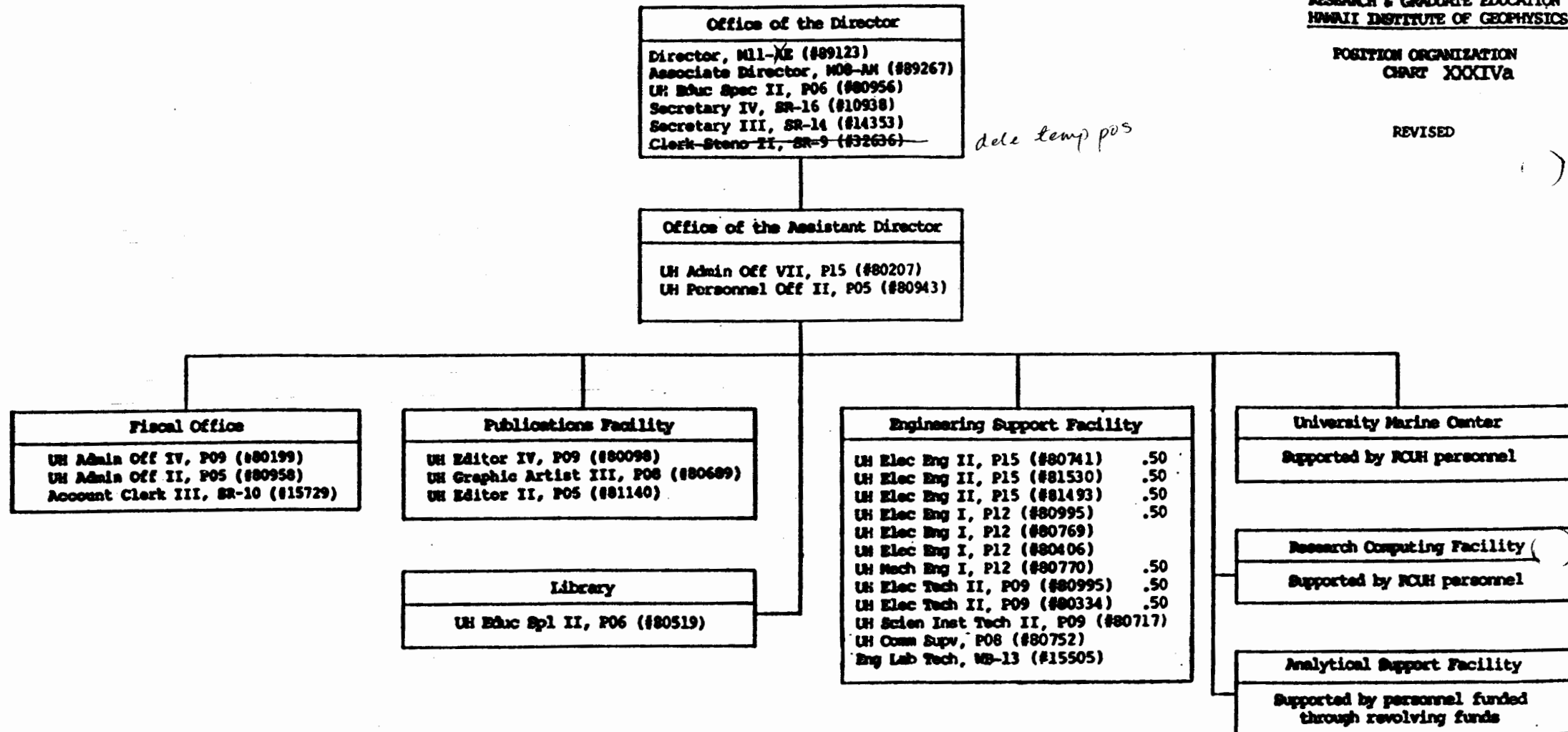
APPROVED  
*Albert J. Amode*  
President, University of Hawaii  
Date: NOV 28 1988

STATE OF HAWAII  
UNIVERSITY OF HAWAII  
UNIVERSITY OF HAWAII AT MANOA

RESEARCH & GRADUATE EDUCATION  
HAWAII INSTITUTE OF GEOPHYSICS

POSITION ORGANIZATION  
CHART XXXIVa

REVISED



APPROVED

*Albert J. Simone*

President, University of Hawaii

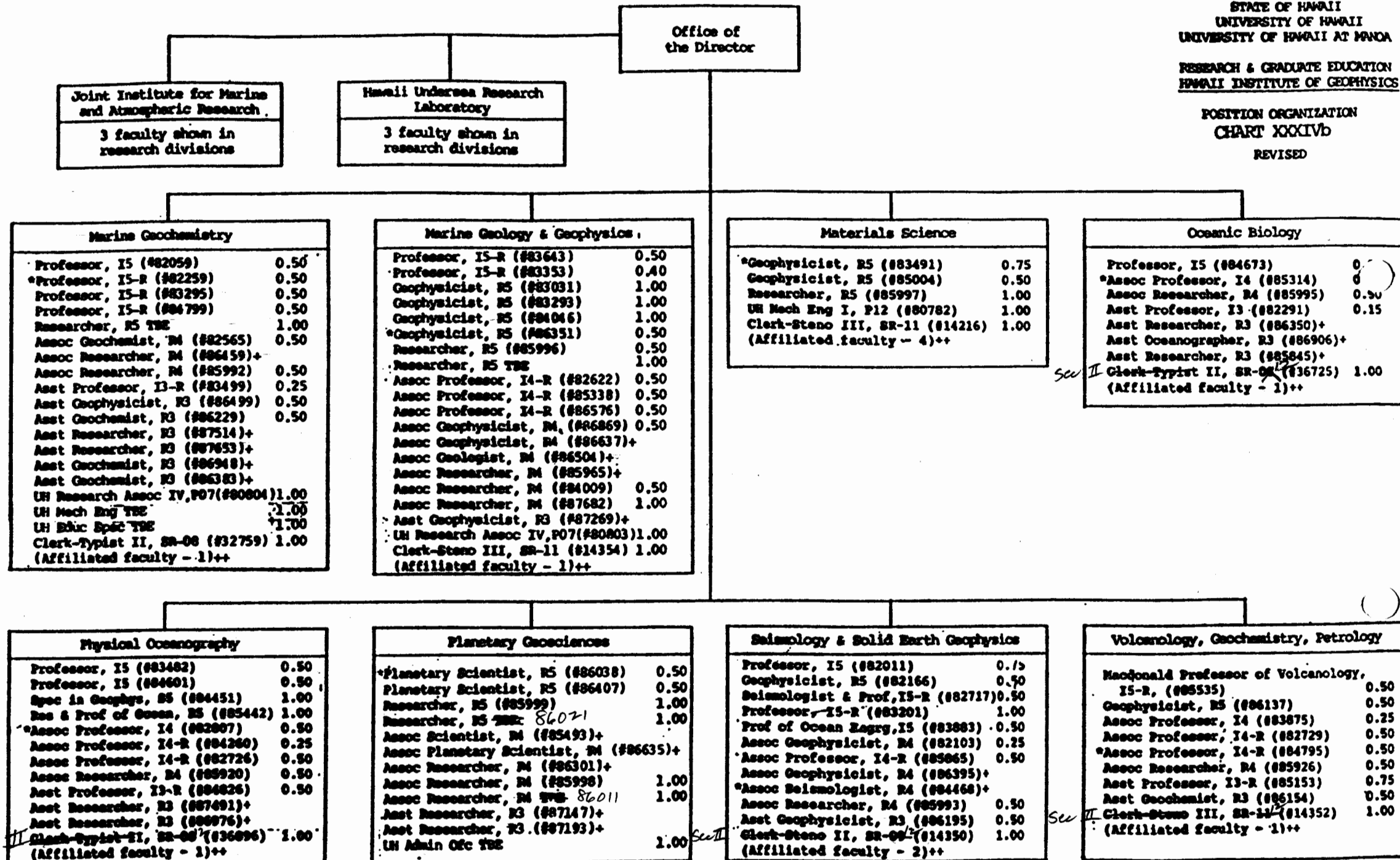
Date:

NOV 28 1988



STATE OF HAWAII  
UNIVERSITY OF HAWAII  
UNIVERSITY OF HAWAII AT MANOA  
RESEARCH & GRADUATE EDUCATION  
HAWAII INSTITUTE OF GEOPHYSICS

POSITION ORGANIZATION  
CHART XXXIVb  
REVISED



- \* Indicates current division chairman  
+ Researcher supported from extramural funds  
++ Researcher for whom HIG provides monetary, administrative or facilities support  
TBE = To be established

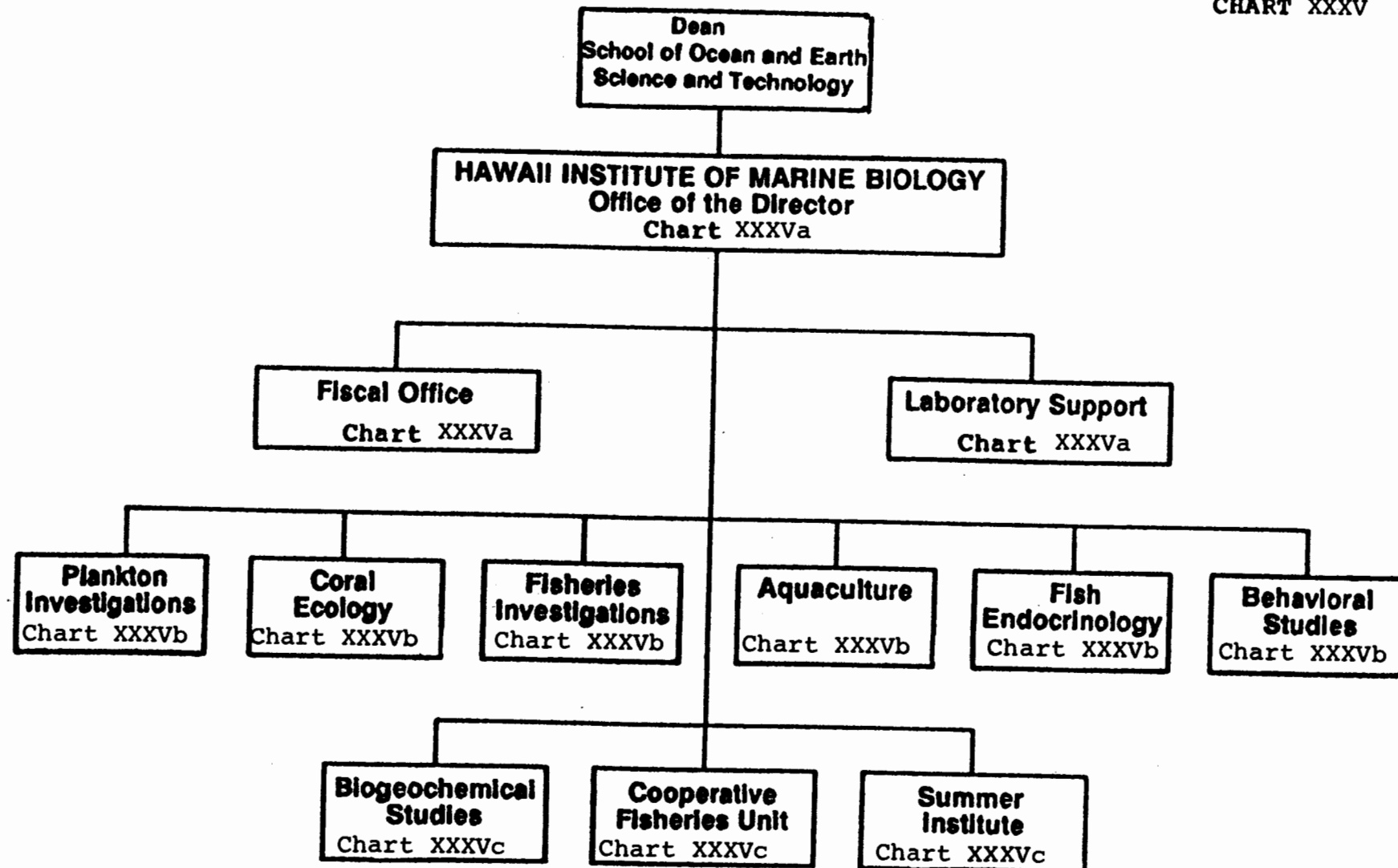
Rev. per 1/8/89  
Lptt

APPROVED  
Albert J. Amodeo  
President, University of Hawaii  
Date: \_\_\_\_\_

Secretary II

UNIVERSITY OF HAWAII  
UNIVERSITY OF HAWAII AT MANOA  
**HAWAII INSTITUTE OF MARINE BIOLOGY**

CHART XXXV



APPROVED

*Albert J. Senise*

President, University of Hawaii NOV 28 1988

Date: \_\_\_\_\_

STATE OF HAWAII  
UNIVERSITY OF HAWAII AT MANOA  
HAWAII INSTITUTE OF MARINE BIOLOGY

Office of the Director

Director & Professor, E5, #89005 (1.00)  
Associate Director (faculty, I5  
    appointed from research position)  
Clerk-Stenographer III, SR11, #15089 (1.00)  
Clerk-Stenographer II, SR9, #27621 (1.00)

Office of the Director

Position Organization Chart

CHART XXXVa

UH Administrative Officer IV, P09, #81865 (1.00)  
Account Clerk III, SR-11, #17322 (1.00)

Marine Laboratory Supervisor, P06, #81826 (1.00)  
Maintenance Mechanic II, WF9, #17458 (1.00)  
Maintenance Mechanic I, WB9, #8039 (1.00)  
Maintenance Mechanic I, WB9, #26649 (1.00)  
Building Maintenance Worker I, WB9, #13805 (1.00)  
Motorboat Operator-Utility Worker, WB6, #15462 (1.00)  
Motorboat Operator-Utility Worker, WB6, #15743 (1.00)  
Janitor II, WB2, #14341 (1.00)

APPROVED

*Albert J. Seniore*

President, University of Hawaii

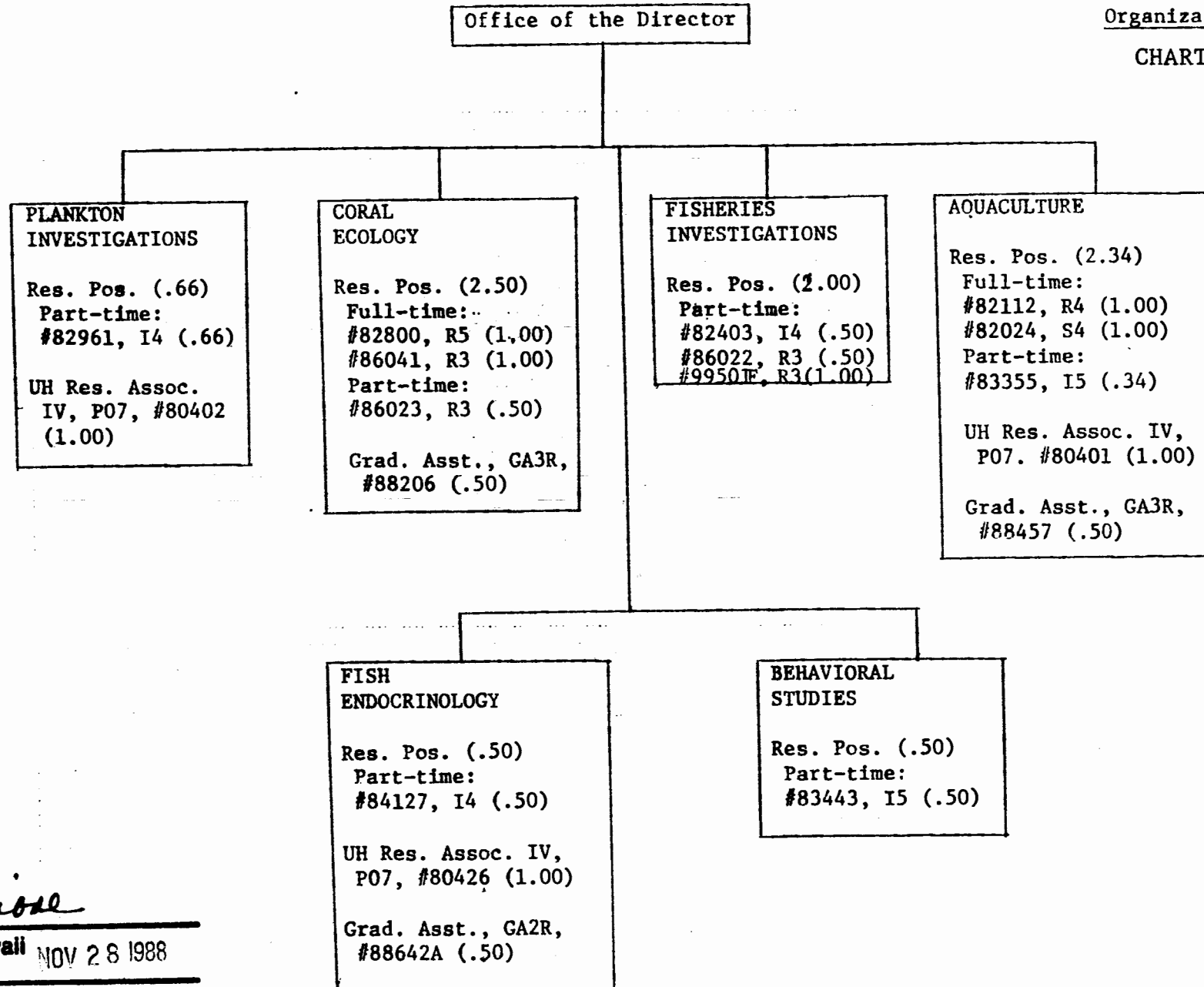
Date: \_\_\_\_\_

NOV 28 1988

STATE OF HAWAII  
UNIVERSITY OF HAWAII AT MANOA  
HAWAII INSTITUTE OF MARINE BIOLOGY

Organization Chart

CHART XXXVb



APPROVED

*Albert J. Simose*

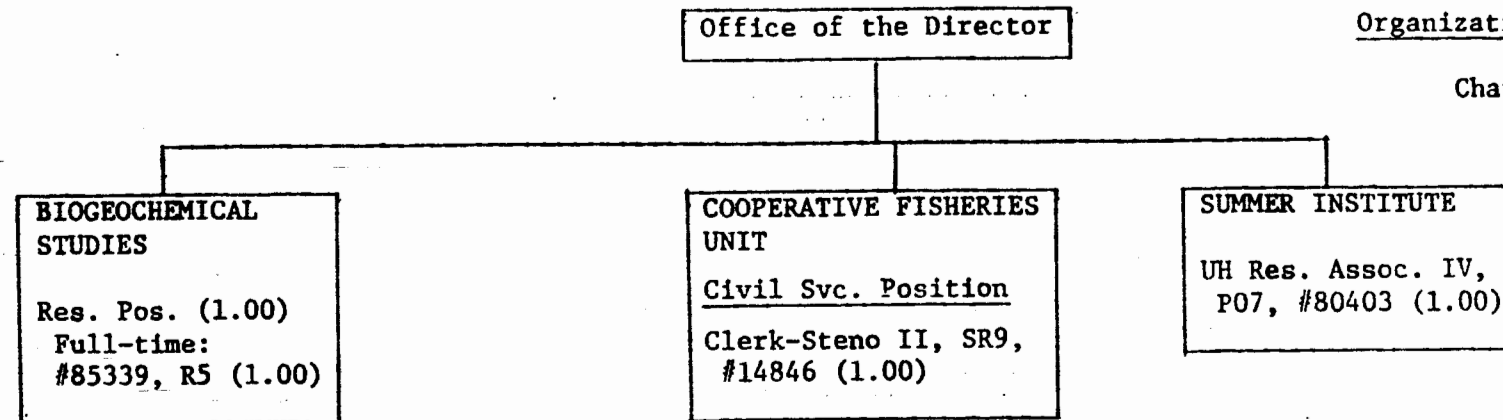
President, University of Hawaii NOV 28 1988

Date: \_\_\_\_\_

STATE OF HAWAII  
UNIVERSITY OF HAWAII AT MANOA  
HAWAII INSTITUTE OF MARINE BIOLOGY

Organization Chart

Chart XXXVc



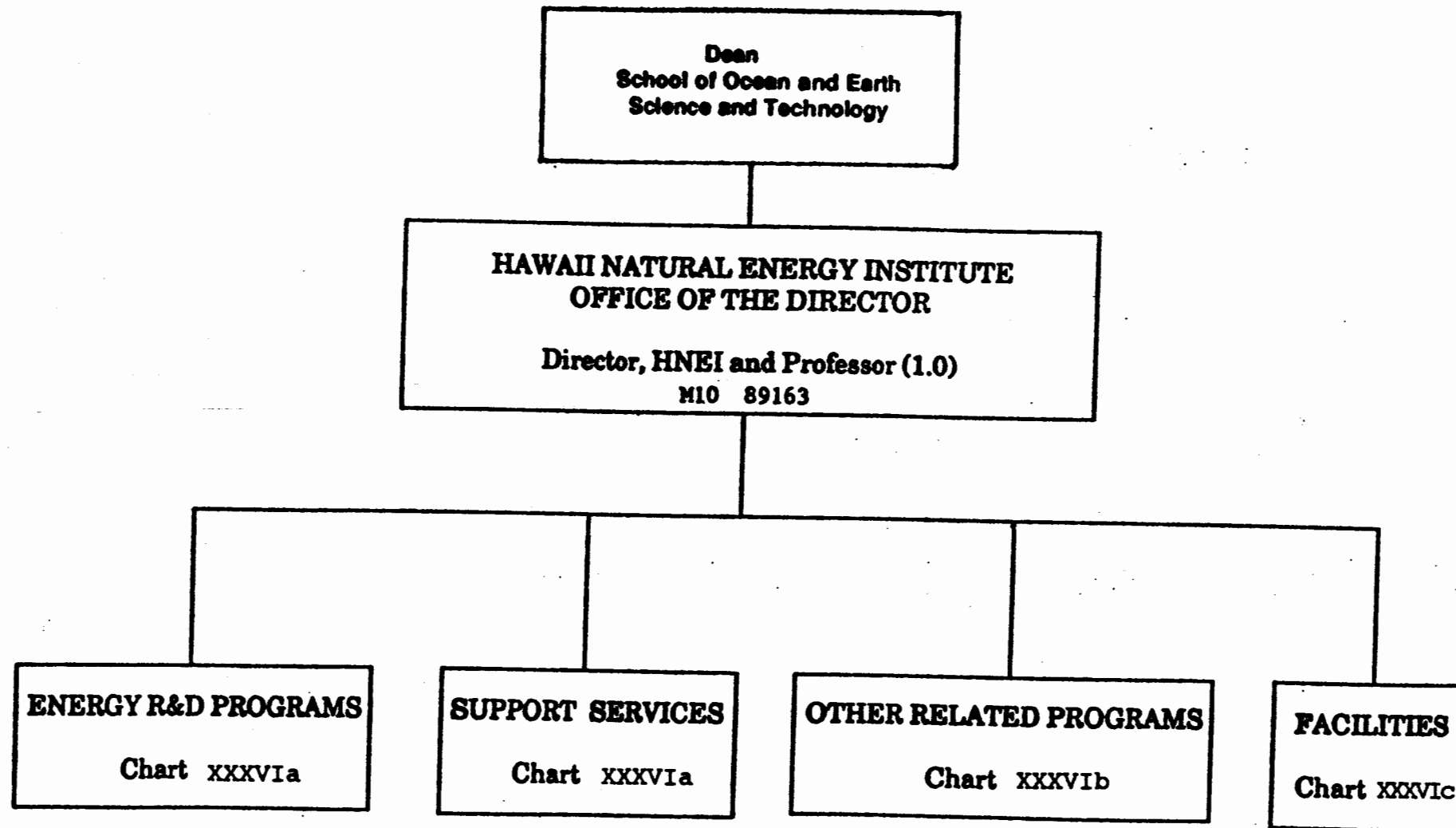
APPROVED

*Albert J. Simone*

President, University of Hawaii NOV 28 1988

Date: \_\_\_\_\_

ORGANIZATION CHART  
CHART XXXVI



APPROVED

*Albert J. Simone*

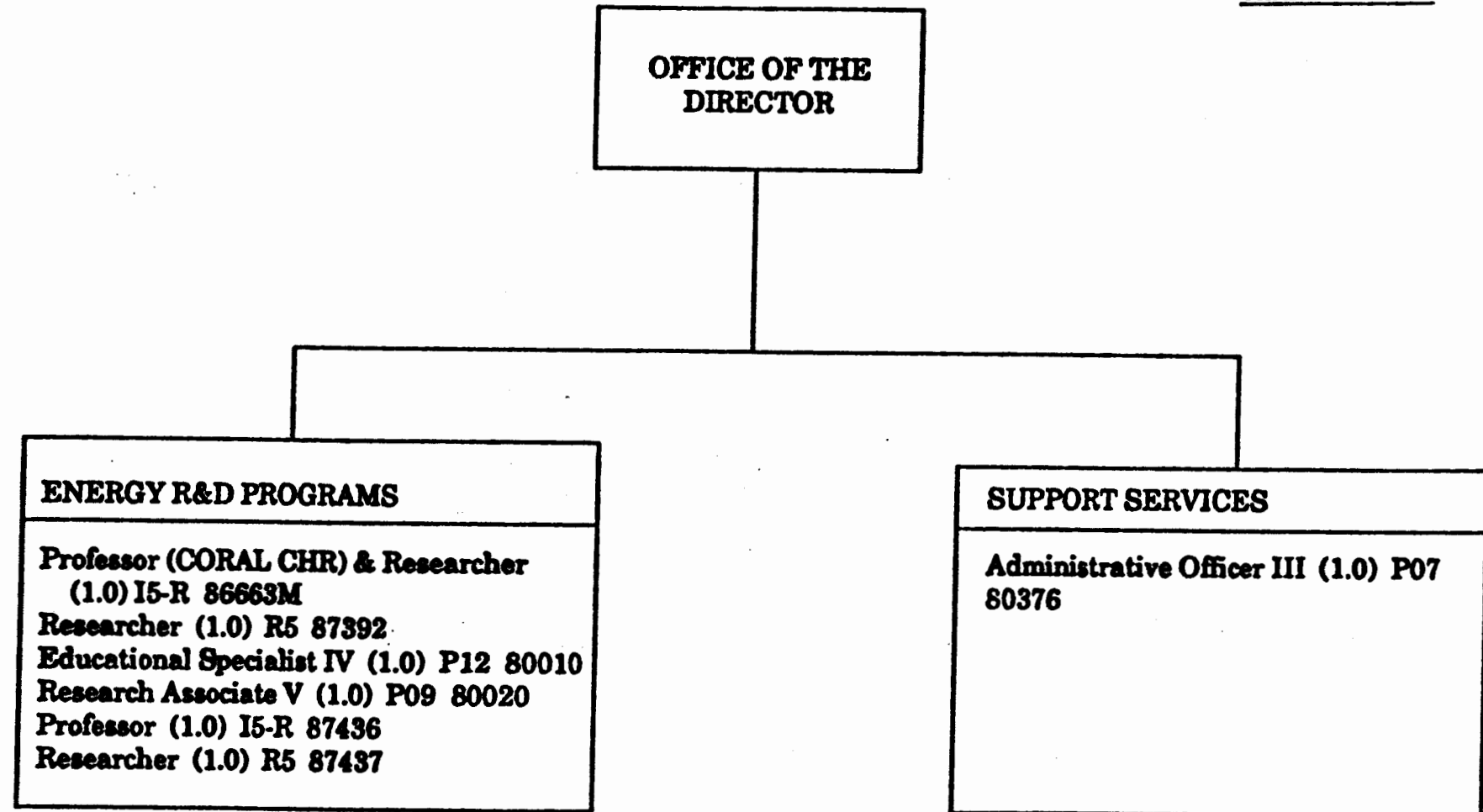
President, University of Hawaii NOV 28 1988

Date: \_\_\_\_\_

STATE OF HAWAII  
UNIVERSITY OF HAWAII

UNIVERSITY OF HAWAII AT MANOA  
HAWAII NATURAL ENERGY INSTITUTE

ORGANIZATION CHART  
CHART XXXVla



APPROVED

*Albert J. Seniore*

President, University of Hawaii

NOV 28 1988

Date: \_\_\_\_\_

STATE OF HAWAII  
UNIVERSITY OF HAWAII

UNIVERSITY OF HAWAII AT MANOA  
HAWAII NATURAL ENERGY INSTITUTE

ORGANIZATION CHART  
CHART XXXVIB

OFFICE OF THE  
DIRECTOR

OTHER RELATED PROGRAMS

Coral Industries Chair  
Fellows in Renewable Energy Engineering  
(FREE) Program  
Tri-State Consortium  
Pacific International Center for High Technology  
Research (PICHTR), Energy and Resources  
Division  
Center for Ocean Resources Technology  
(CORT) Project  
Materials and Applied Sciences (MAS) Program  
Marine Minerals Technology Center (MMTC)  
Greenhouse Effect Reduction Group

[to be administered by Director]

APPROVED

*Albert J. Simone*

President, University of Hawaii

Date: \_\_\_\_\_

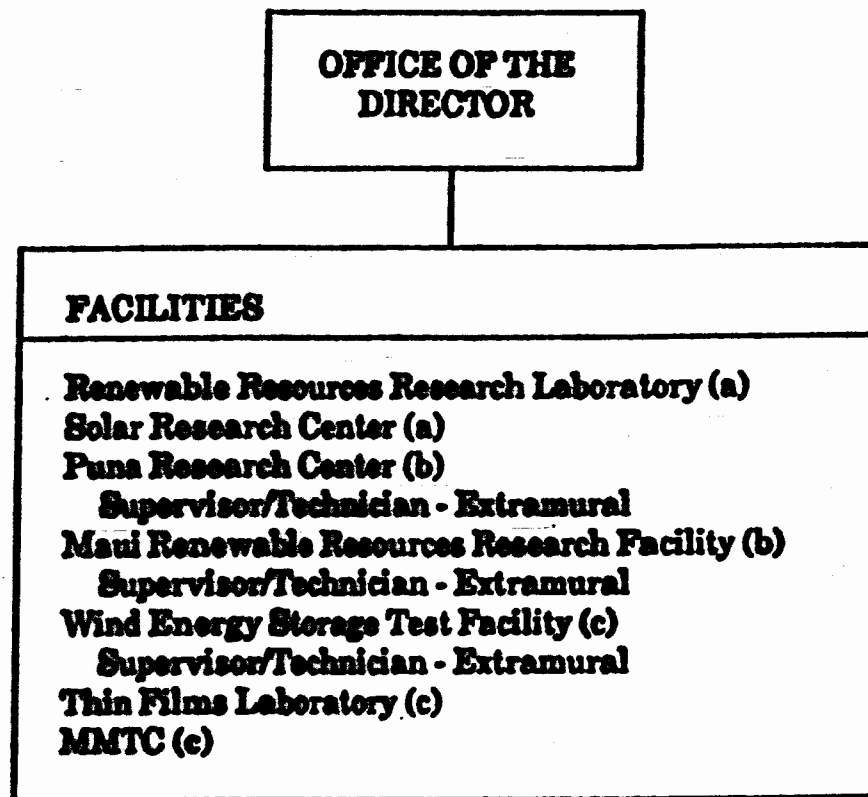
10/28/1988



STATE OF HAWAII  
UNIVERSITY OF HAWAII

UNIVERSITY OF HAWAII AT MANOA  
HAWAII NATURAL ENERGY INSTITUTE

ORGANIZATION CHART  
CHART XXXVIC



- (a) Administered by Coral Chair  
(b) Research supervisory role  
(c) Administration & research supervisory role

APPROVED

*Albert J. Simone*

President, University of Hawaii

Date: NOV 28 1988

STATE OF HAWAII  
UNIVERSITY OF HAWAII  
UNIVERSITY OF HAWAII AT MANOA  
SCHOOL OF OCEAN AND EARTH  
SCIENCE AND TECHNOLOGY

DEPARTMENTS

ORGANIZATION CHART  
CHART XXXVII

APPROVED

*Albert J. Simose*

President, University of Hawaii

Date: \_\_\_\_\_

Dean  
School of Ocean and Earth  
Science and Technology

DEPARTMENT OF GEOLOGY AND GEOPHYSICS	DEPARTMENT OF METEOROLOGY	DEPARTMENT OF OCEANOGRAPHY	DEPARTMENT OF OCEAN ENGINEERING
Chair(appointed from faculty positions)	Chair(appointed from faculty positions)	Chair(appointed from faculty positions)	Chair(appointed from faculty positions)
Secretary II, SR-12, #11980 1.00	Secretary II, SR-12, #14351 1.00	Secretary II, SR-12, #13891 1.00	Secretary II, SR-12, #18083 1.00
<u>Faculty Positions (Joint Appt.)</u> 10.25 15 #82011, 82166, 82622, 82717, 82729, 82829, 83213, 83491, 83643, 83875, 83912, 84009, 84046, 84795, 85153, 85338, 85535, 85865, 85967, 86351, 86576, 86609, 88168, 88172, 88174, 86012	<u>Scientific Inst. Tech. II,</u> P-09, #88708 1.00	<u>Faculty Positions (Joint Appt.)</u> 10.00 15 #82059, 82259, 82291, 82403, 82726, 82807, 82961, 83295, 83355, 83482, 83499, 84260, 84601, 84673, 84799, 84826, 85314, 82000, 88154, 88156, 88163, 88167	<u>Scientific Inst. Tech. II,</u> P-09, #80720 1.00
<u>Graduate Assistants</u> 2.00	<u>Faculty Positions (Full time)</u> 7.00	<u>Graduate Assistants</u> 2.00	<u>Electronics Tech. II,</u> P-09, #80716 .50
#88075, 88137, 88443, 88594 13.25	<u>Graduate Assistants</u> #85028, 88339 1.00	#84941, 88119, 88160, 88569 13.00	<u>Faculty Positions</u> 6.50
(New positions.)	10.00	(New positions.)	<u>Full time:</u> #82130, 82736, 83802, 84118, 84447
			<u>Part-time:</u> #84222, 83376, 83883
			<u>Graduate Assistants</u> .50
			#88382 9.50

Rev. per 1989 update