

**Office of the
Chancellor**

**State of Hawaii
University of Hawaii
Kapiolani Community College**

**Position Organization Chart
Chart I**

**Office of the
Provost
Chart II**

**Student
Services
Chart IV**

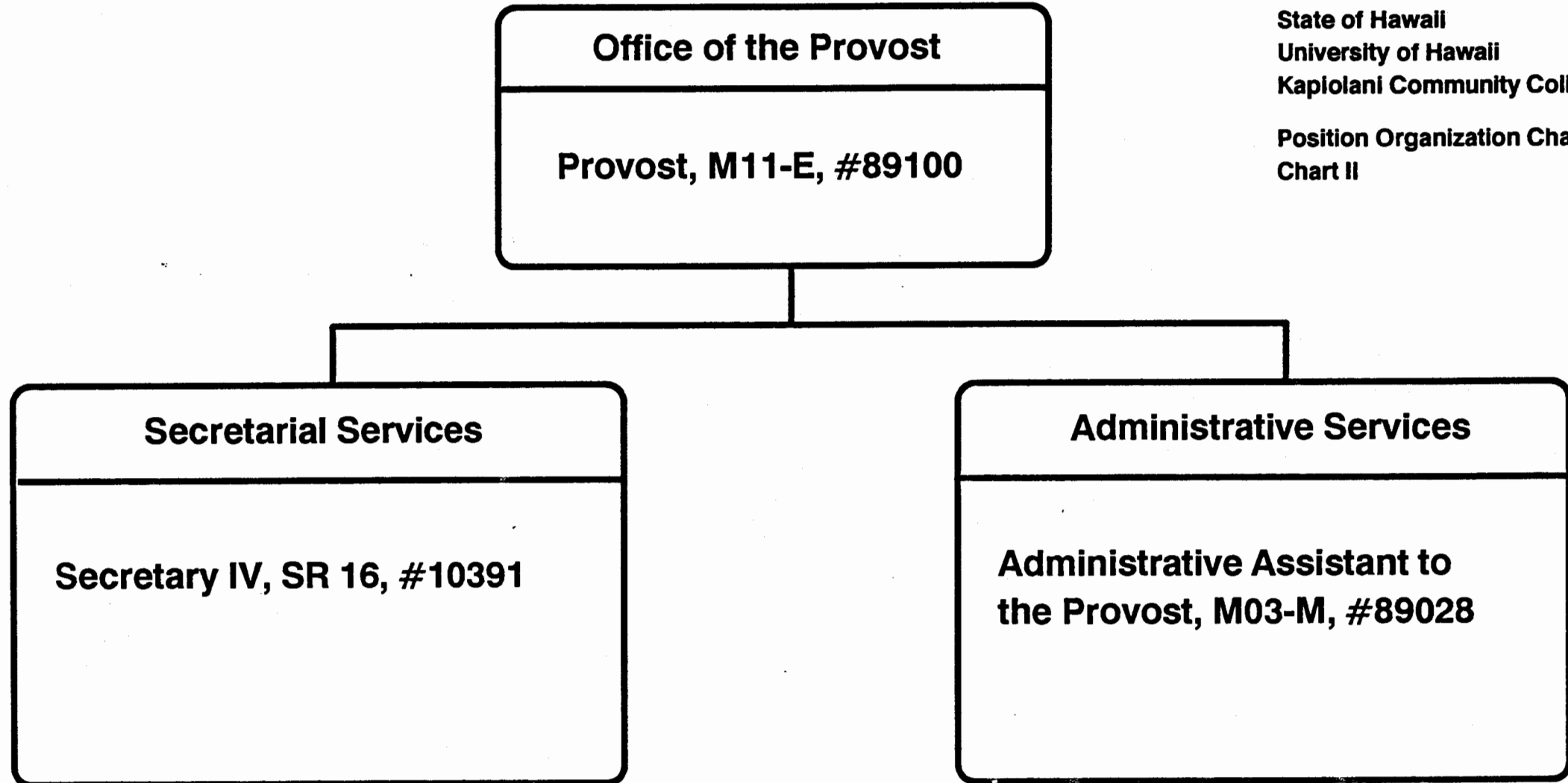
**Instruction
Chart III**

**Administrative
Services
Chart V**

**Community
Services
Chart VI**

Chart Updated

Date **JUN 30 1989**



State of Hawaii
University of Hawaii
Kaplolan Community College

Position Organization Chart
Chart II

Chart Updated
Date JUN 30 1989

Secretarial Services

Secretary III, SR 14, #21334
 Clerk-Steno II, SR 09, #29222
 Clerk-Steno II, SR 09, #26763

Instruction

Dean, M07-M, #89068

State of Hawaii
 University of Hawaii
 Kapiolani Community College

Position Organization Chart
 Chart III

Instructional Support

Assistant Dean of Instruction,
 M04-M, #89052, #89160

UH Computer Specialist III,
 P07, #80529

Instructor II, C 2, #86778

Clerk-Steno II, SR 09, #40964

General Education
 Division/Department
 See Chart III a

Business Education
 Division/Department
 See Chart III b

Food Service Education
 Division/Department
 See Chart III c

Office Administration and
 Technology/Paralegal
 Division/Dept.
 See Chart III j

General Education
 Division/Department
 See Chart III d

Health Education
 Division/Department
 See Chart III e

Library
 See Chart III f

Educational Media Center
 See Chart III g

Learning Assistance Center
 See Chart III h

Computing Center
 See Chart III i

Chart Updated
 Date JUN 30 1989

General Education Division/Department

General Education

Social Science

Chairperson, # _____ *

Instructors _____ Total (11.00)

Full-time: #83745, #84972, #84973, #83642 #82152, #82706,
#82935, #83492, #82560, #87403, #86599

Language Arts

Chairperson, # _____ *

Instructors _____ Total (18.00)

Full-time: #83559, #82178, #83783, #83903, #82232, #82555,
#82776, #83308, #83447, #83870, #84327, #84409,
#83795, #83123, #86596, #86594, #86595, #86604

General Education, Clerical Staff**

Secretary II, SR 12, #22313

Clerk-Typist II, SR08, #26658, #22310

*Chairperson is appointed from among instructional positions within department.

**Secretarial and Clerical staff serves all four General Education Departments—Social Science, Language Arts, Mathematics/Science, and Humanities.

State of Hawaii
University of Hawaii
Kapolei Community College
Instruction

Position Organization Chart
Chart III a

Chart Updated

Date JUN 30 1989

Business Education Division/Department

Business Education

Accounting/Data Processing

Chairperson, # _____ *

Instructors

Total (12.00)

Full-time: #82026, #82066, #82728, #82931, #82795, #83221,
#84337, #82503, #84882, #83901, #86591, #86598

Business Administration

Chairperson, # _____ *

Instructors

Total (7.00)

Full-time: #82031, #82218, #82231, #82429, #82389, #84150,
#84369

Business Education, Clerical Staff

Secretary II, SR 12, #22312

*Chairperson is appointed from among instructional positions within department.

State of Hawaii
University of Hawaii
Kapiolani Community College
Instruction

Position Organization Chart
Chart III b

Chart Updated
Date JUN 30 1989

Food Service and Hospitality Education Division/Department

Food Service and Hospitality Education

Chairperson, # _____ *

Instructors Total (15.00)

**Full-time: #82540, #82970, #83225, #83460, #83684, #84091,
#84103, #84304, #84539, #82683, #82467, #83133,
#86597, #86670, #86719**

Food Service, Clerical Staff

Secretary II, SR 12, #16962

Cook III, WB 08, #22318 (w)

Snack Bar Cashier, SR 06, #22319 (w)

Clerk-Typist II, SR 08, #29010 (w)

Cafeteria Helper, WB 02, #32863 (w)

***Chairperson is appointed from among instructional positions within department.
(w) Represents positions funded by the Food Service Revolving Fund.**

**State of Hawaii
University of Hawaii
Kapiolani Community College
Instruction**

**Position Organization Chart
Chart III c**

**Chart Updated
Date JUN 30 1989**

General Education Division/Department

General Education

Mathematics/Science

Chairperson, # _____ *

Instructors Total (17.00)

Full-time: #82492, #82981, #83974, #84458, #82394, #83096,
#83262, #83688, #83733, #83357, #83939, #87401,
#82910, #86600, #86592, #86593, #86606

Humanities

Chairperson, # _____ *

Instructors Total (13.00)

Full-time: #84971, #83094, #82631, #82925, #83809, #84974,
#82607, #84470, #82052, #82983, #87402, #87404,
#86602

* Chairperson is appointed from among instructional positions within department.

State of Hawaii
University of Hawaii
Kapiolani Community College
Instruction

Position Organization Chart
Chart III d

Chart Updated

Date JUN 30 1989

Health Education Division/Department

Health Education

Allied Health

Chairperson, # _____ *

Instructors Total (11.10)

Full-time: #84326, #83310, #83667, #82121, #82405, #82576,
#83321, #82162, #85821, #86385, #86384

Part-time: #87052 (.10)

Nursing

Chairperson, # _____ *

Instructors

Full-time: #82064, #82513, #84487, #84629, #84655, #82244,
#86774, #86777, #86776

Part-time: #84308 (.50), #84308A (.50)

Health Education, Clerical Staff

Secretary II, SR 12, #18093

Clerk-Steno II, SR 09, #32952

*Chairperson is appointed from among instructional positions within department.

State of Hawaii

University of Hawaii

Kapiolani Community College

Instruction

Position Organization Chart

Chart III e

Chart Updated

Date JUN 30 1989

Library

Unit Head _____ *

Instructor III (Librarian), #84185, #84438

Instructor II (Librarian), #83504, #86629

Library Tech V, SR 11, #39859, #39796

Library Assistant IV, SR 09, #18087, #22311, #26762

State of Hawaii
University of Hawaii
Kapiolani Community College
Instruction

Position Organization Chart
Chart III f

Chart Updated

Date JUN 30 1989

*Unit Head/Chairperson is appointed from among instructional positions within the unit/department.

Educational Media Center

Unit Head/Chairperson, # _____ *

Instructor V, #82386, #87603

UH Electronic Technician II, P09, #80034
UH Electronic Technician I, P06, #81277

UH Educational Specialist II (Media), P06, #80694

UH Graphic Artist II, P05, #81060
Offset Press Operator II, WB08, #39797

Clerk-Steno III, SR 11, #21321

***Unit Head/Chairperson is appointed from among instructional positions within unit/department.**
Pending establishment: UH Computer Specialist II, #98721F; UH Electronic Engineer I, #98720F

State of Hawaii
University of Hawaii
Kapiolani Community College
Instruction

Position Organization Chart
Chart III g

Chart Updated
Date JUN 30 1989

Learning Assistance Center

Unit Head/Chairperson, # _____ *

UH Educational Specialist II, P06, #81164

UH Educational Specialist II, P06, #82263 (.50)

Clerk-Typist II, SR 08, #14214

*Unit Head/Chairperson is appointed from among instructional positions at the College.

State of Hawaii
University of Hawaii
Kapiolani Community College
Instruction

Position Organization Chart
Chart III h

Chart Updated
Date JUN 30 1989

Computing Center

UH Educational Specialist II, P06, #81384

**State of Hawaii
University of Hawaii
Kapiolani Community College
Instruction**

**Position Organization Chart
Chart III I**

Chart Updated

Date JUN 30 1989

**Office Administration and Technology
and Paralegal Division/Department**

Office Administration and Technology/Paralegal Education

Office Administration and Technology Programs

Chairperson, # _____ *

Instructors Total (9.00)

**Full-time: #82348, #82380, #82876, #83071, #83734, #83771,
#84072, #84223, #84370**

Paralegal Program

Chairperson, # _____ *

Instructors Total (1.00)

Full-time: #83360

**Office Administration and Technology/Paralegal Education,
Clerical Staff**

Clerk-Typist II, SR 08, #18092

***Chairperson is appointed from among instructional positions within department.**

**State of Hawaii
University of Hawaii
Kapiolani Community College
Instruction**

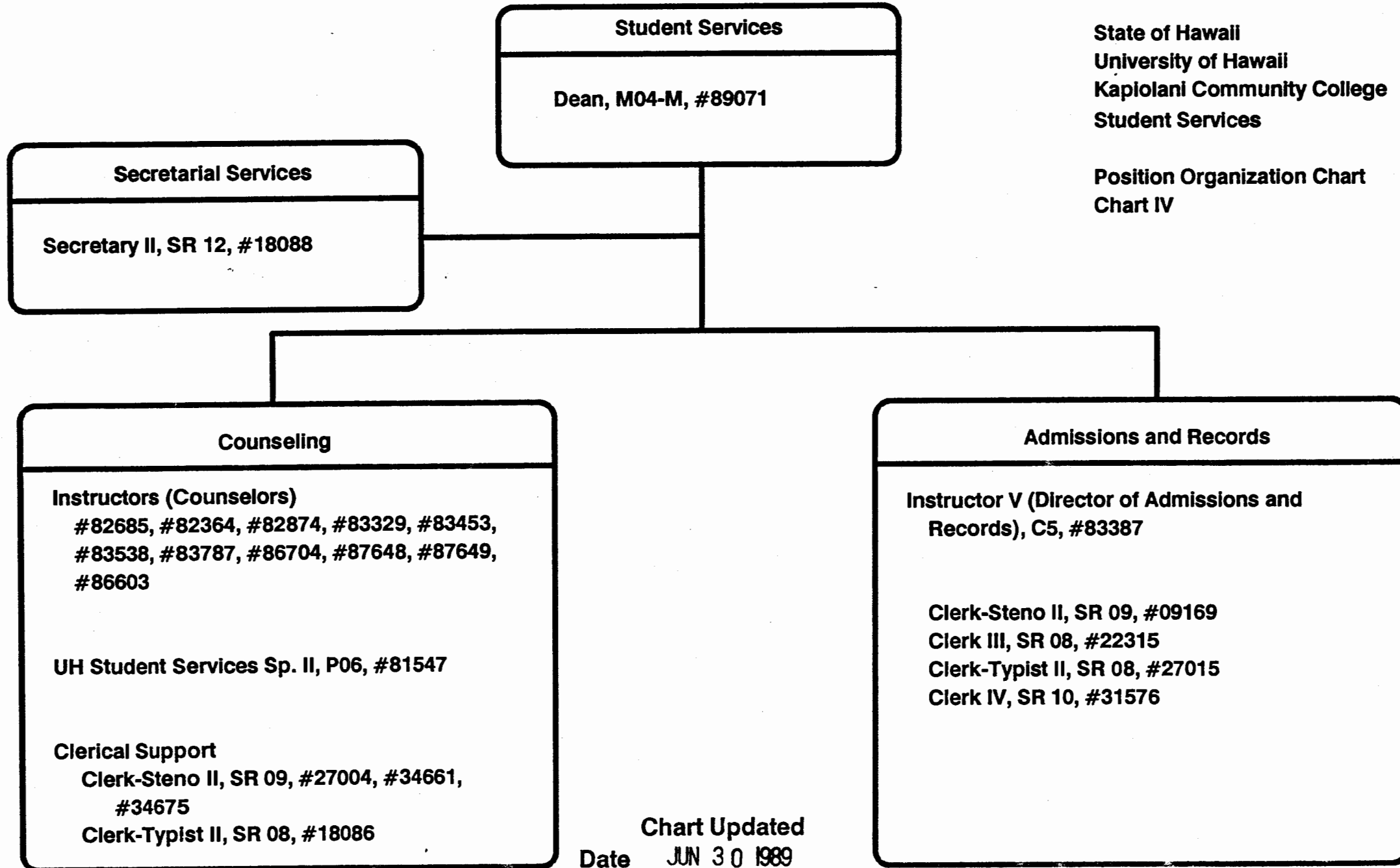
**Position Organization Chart
Chart III j**

Chart Updated

Date JUN 30 1989

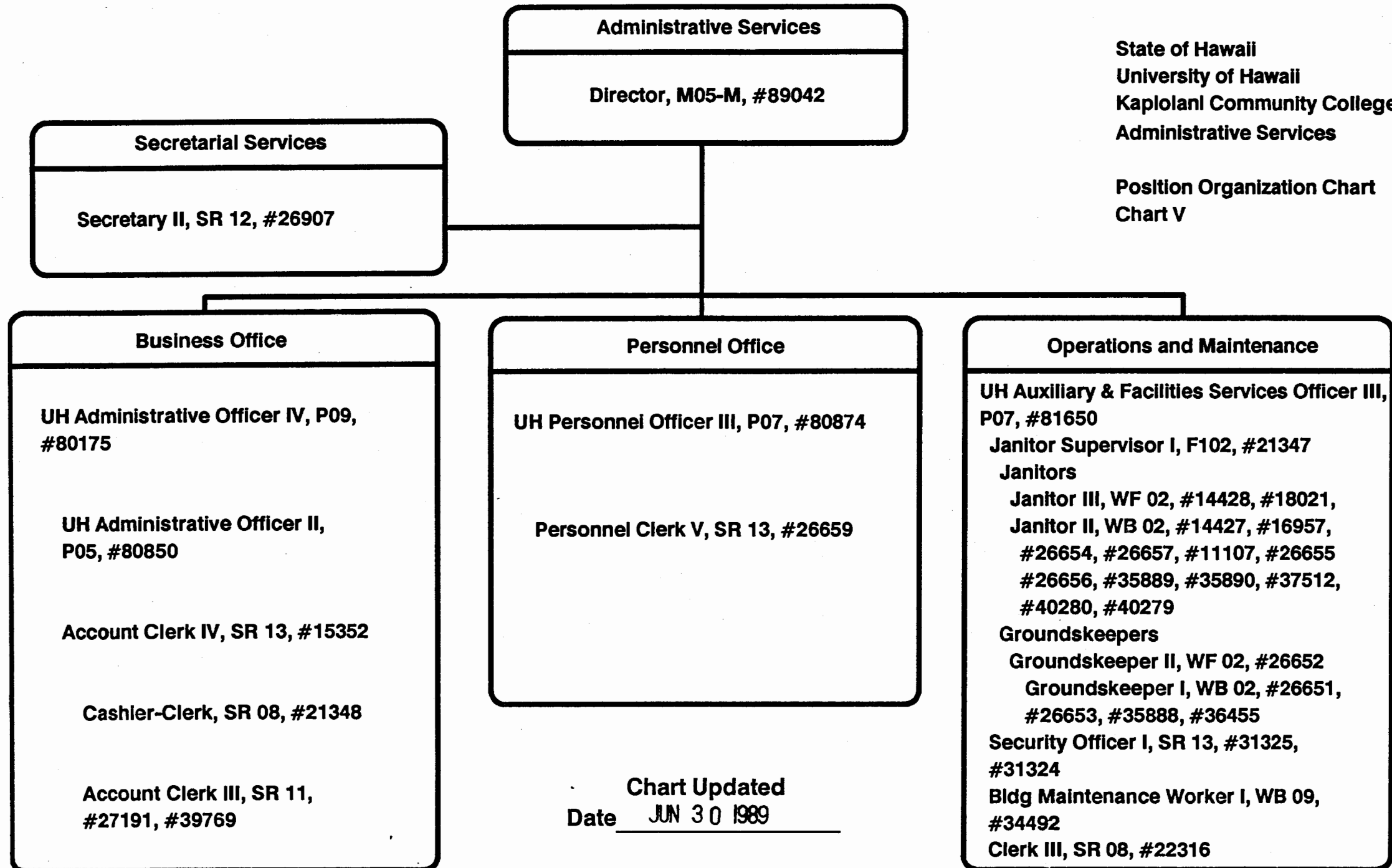
State of Hawaii
University of Hawaii
Kapiolani Community College
Student Services

Position Organization Chart
Chart IV



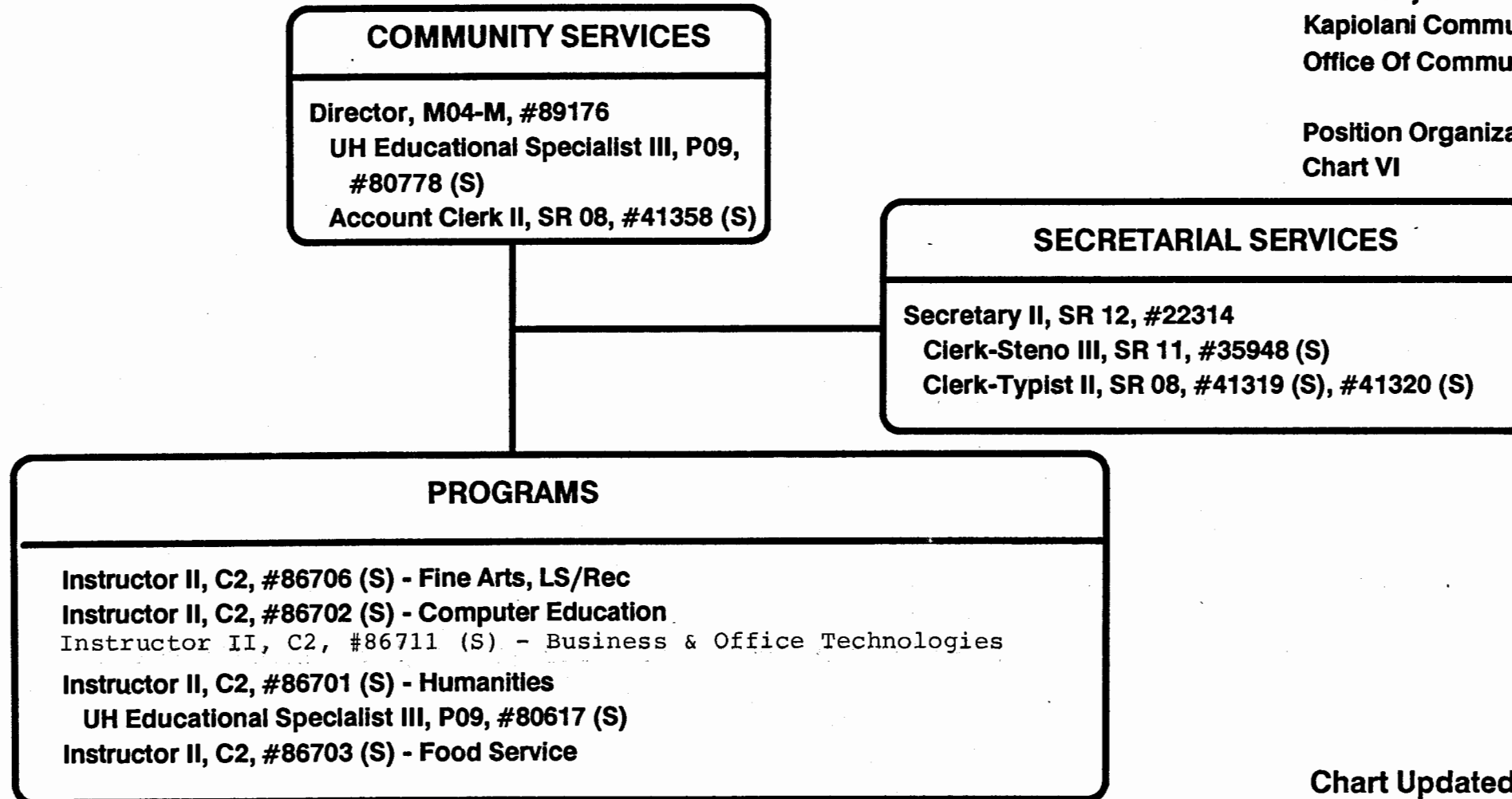
State of Hawaii
University of Hawaii
Kapiolani Community College
Administrative Services

Position Organization Chart
Chart V



State of Hawaii
University of Hawaii
Kapiolani Community College
Office Of Community Services

Position Organization Chart
Chart VI



(S) Represent positions funded by the Community Services Special Fund
Pending Establishment: UH Educational Specialist II, #99706F (S)

Chart Updated
Date JUN 30 1989