

State of
University of
Leeward Community College
Organization Chart
Chart I

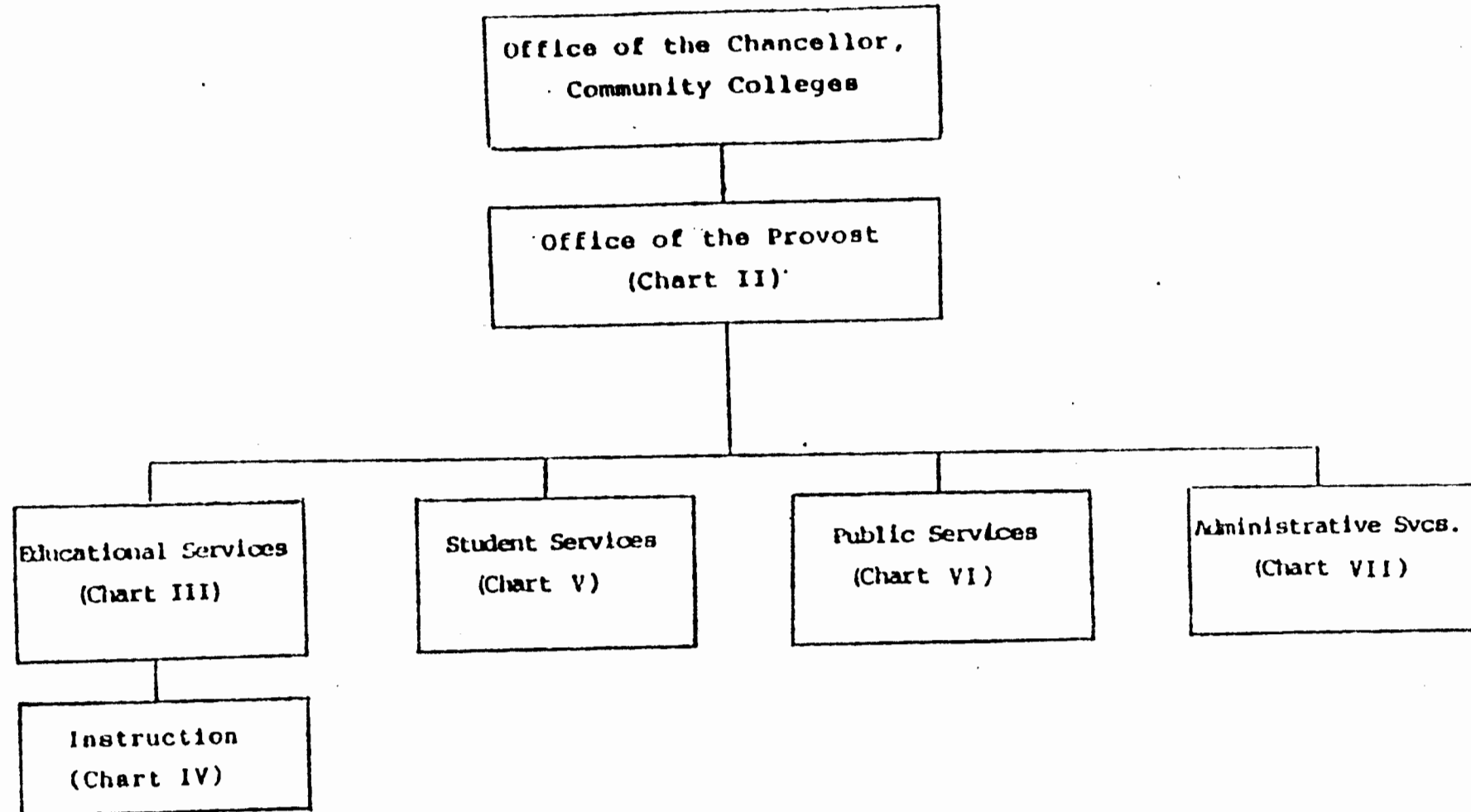


CHART UPDATED

DATE JUN 30 1989

STATE OF HAWAII
UNIVERSITY OF HAWAII
LEIWARD COMMUNITY COLLEGE
OFFICE OF THE PROVOST

Position Organization Chart

Chart II

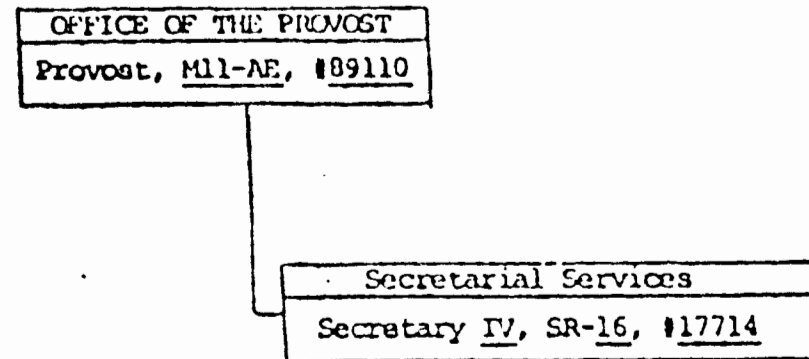
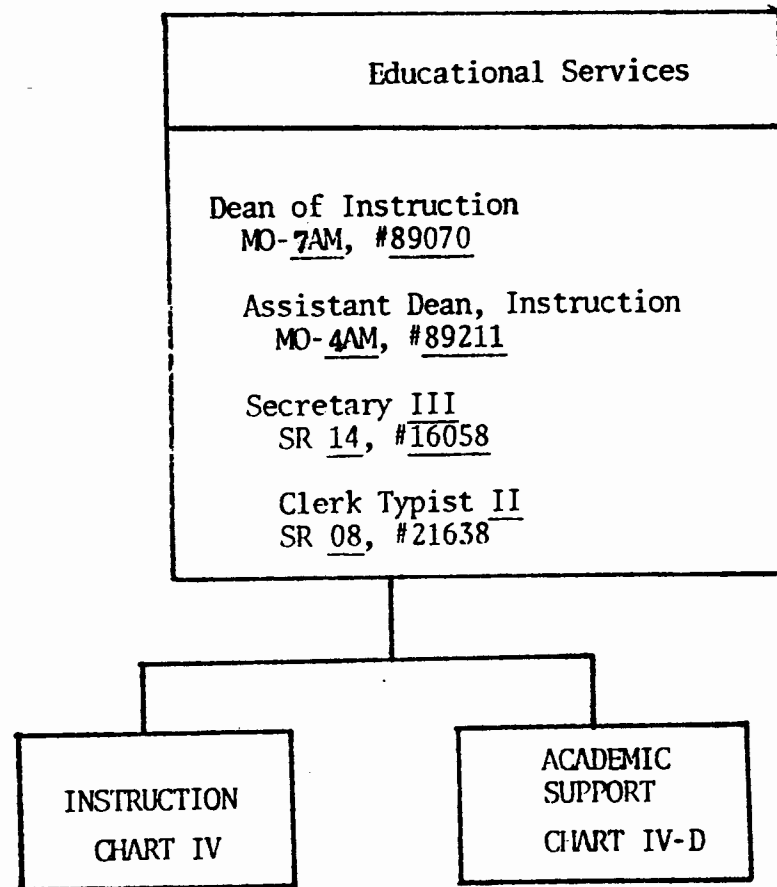


CHART UPDATED

DATE JUN 30 1989

State of Hawaii
University of Hawaii
Leeward Community College
Educational Services

Organization Chart
Chart III
11/13/87



APPROVED

Albert J. Amicone

President, University of Hawaii

Nov 24 1988

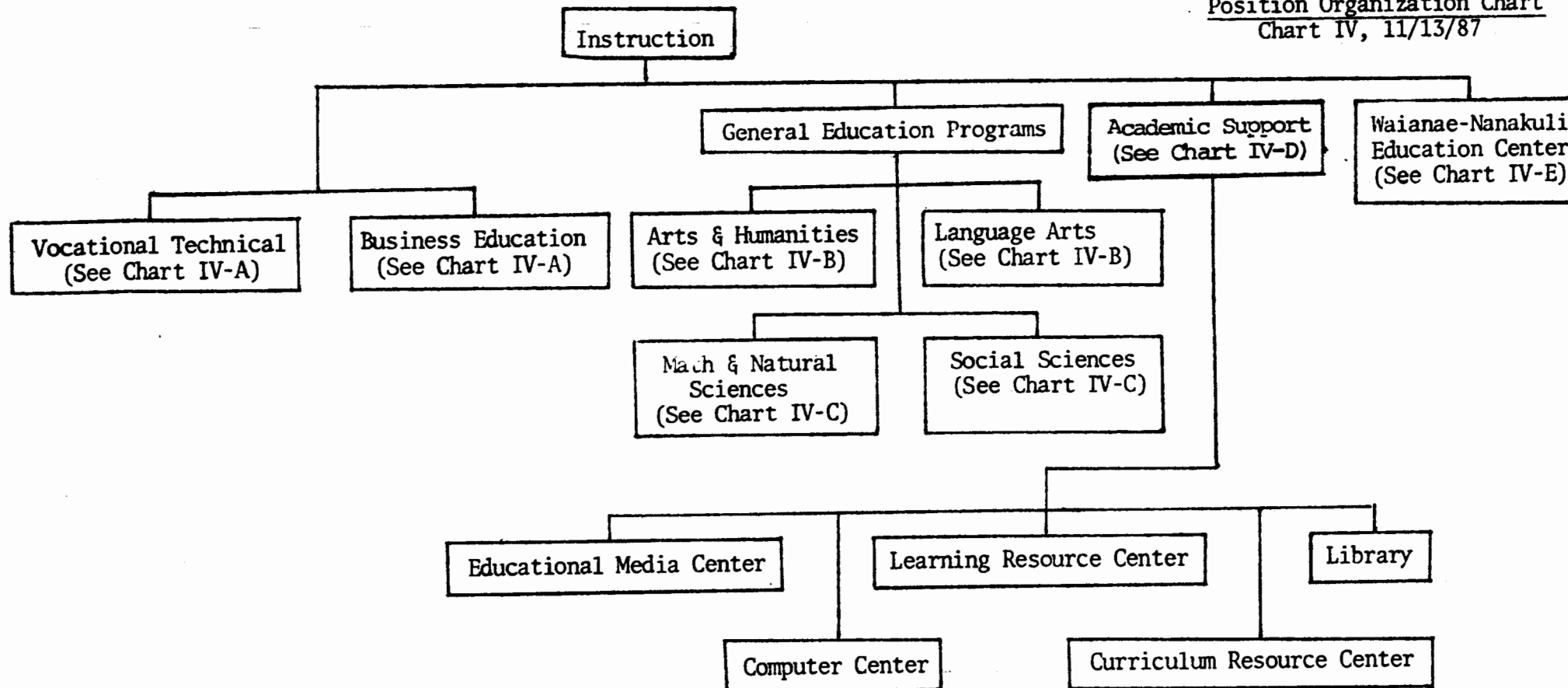
CHART UPDATED

DATE JUN 30 1989

STATE OF HAWAII
UNIVERSITY OF HAWAII
LEEWARD COMMUNITY COLLEGE

ACADEMIC SUPPORT

Position Organization Chart
Chart IV, 11/13/87



APPROVED

Albert J. Sinclair

President, University of Hawaii

Date: NOV - 4 1988

CHART UPDATED

JUN 30 1989

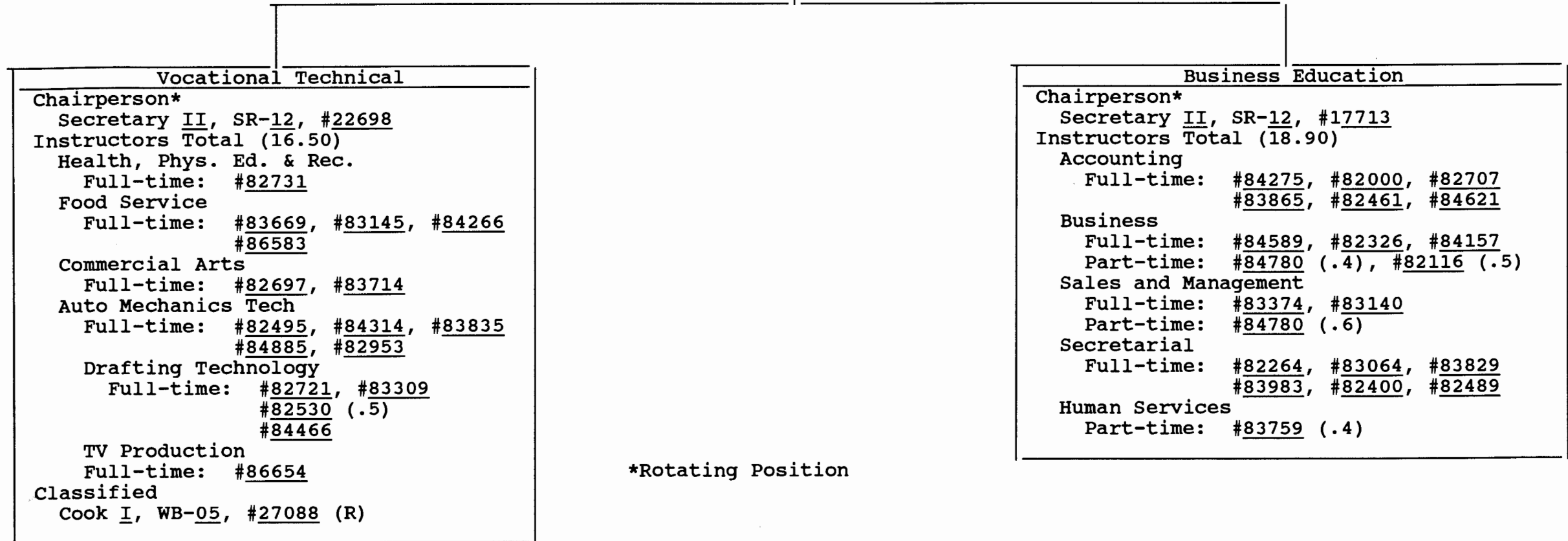
STATE OF HAWAII
UNIVERSITY OF HAWAII
LEEWARD COMMUNITY COLLEGE

INSTRUCTION
Dean of Instruction (CC) M07-M, #89070

INSTRUCTION

Position Organization Chart 06/30/89

Chart IV-A



*Rotating Position

CHART IV-A-1989
JUN 30 1989

STATE OF HAWAII
UNIVERSITY OF HAWAII
LEEWARD COMMUNITY COLLEGE

General Education Programs

GENERAL EDUCATION PROGRAMS

Position Organization Charts 06/30/89

CHART IV-B

Math & Natural Sciences
Chart IV-C

Social Sciences
See Chart IV-C

Arts & Humanities

Chairperson*

Secretary II, SR-12, #17711

Instructors Total (23.10)

Art

Full-time: #82890, #82247, #82502, #84086

Music

Full-time: #82239, #84426, #84014

Part-time: #83636 (.5), #82116A (.5)

Dance

Part-time: #83636 (.5)

Drama & Theatre

Full-time: #83105

Part-time: #83181 (.5)

Philosophy

Full-time: #82941, #83907

Religion

Full-time: #83808

Part-time: #82021 (.6)

History

Full-time: #84018, #84026, #82581, #82306,
#83474, #83887

Part-time: #84104 (.8)

Humanities

Full-time: #82427, #86688

Part-time: #83181 (.5), #84104 (.2)

Language Arts

Chairperson*

Secretary II, SR-12, #17710

Instructors Total (32.0)

English

Full-time: #82960, #83945, #84027, #83850, #84181
#84602, #84653, #84883, #83472, #83570
#83605, #83697, #82129, #82409, #82498
#82570, #82932, #86399, #83210

Part-time: #83607 (.75), #84098 (.4), #84490 (.4)

Asian Pacific Languages

Full-time: #82692, #83442, #82888

Part-time: #84098 (.6)

Journalism

Part-time: #84490 (.6)

European Language

Full-time: #82165, #82645, #82872

Part-time: #83607 (.25)

English as a Second Language

Full-time: #84555

Speech

Full-time: #82496, #82273

Communication

Full-time: #84606

CHART UPDATED

JUN 30 1989

DATE

General Education Programs

STATE OF HAWAII
UNIVERSITY OF HAWAII
LEEWARD COMMUNITY COLLEGE

GENERAL EDUCATION PROGRAMS

Position Organization Chart 06/30/89

Arts & Humanities
See Chart IV-B

Language Arts
See Chart IV-B

Chart IV-C

Math & Sciences

Chairperson*

Secretary II, SR-12, #17712

Instructors Total (33.0)

Biological Science

Full-time: #82225, #84384, #84679,

Part-time: #84849 (.2)

Mathematics

Full-time: #82024, #82522, #84776, #82470, #83055, #82845
#84429, #82035, #84777, #83965, #86642**
#83479, #83180

Part-time: #83660 (.4)

Chemistry

Full-time: #83218, #82085, #82517

Part-time: #84160 (.8)

Oceanography

Full-time: #83248

Part-time: #84849 (.8), #83847 (.2)

Physical Science

Full-time: #82134, #82277, #82670, #82404

Part-time: #83847 (.8), #83660 (.6)

Science

Part-time: #84160 (.2)

Data Processing

Full-time: #83103, #82986, #83161, #84557, #84069

Social Sciences

Chairperson*

Secretary II, SR-12, #19604

Instructors Total (16.0)

Psychology

Full-time: #83104

Part-time: #82017 (.8), #82799 (.8)

#84779 (.8), #82691 (.6)

Anthropology

Full-time: #83464, #83615

Economics

Full-time: #83369, #83129

Part-time: #83759 (.6), #84441 (.6)

Geography

Full-time: #83466

Political Science

Full-time: #84634

Social Science

Part-time: #84358 (.2)

Sociology

Part-time: #84358 (.8), #82021 (.4), #84441 (.4),
#82543 (.6)

Human Development

Part-time: #82017 (.2), #82799 (.2)

Human Services

Full-time: #82029

Part-time: #82691 (.4), #82543 (.4), #84779 (.2)

*Rotating Position

**Administratively assigned to Waianae-Nanakuli Education Center

CHART UPDATED

JUN 30 1989

DATE _____

STATE OF HAWAII
UNIVERSITY OF HAWAII
LEEWARD COMMUNITY COLLEGE

ACADEMIC SUPPORT
Position Organization Chart
Chart IV-D, 06/30/89

ACADEMIC SUPPORT
Assistant Dean for Academic
Support, M04-M, #89252

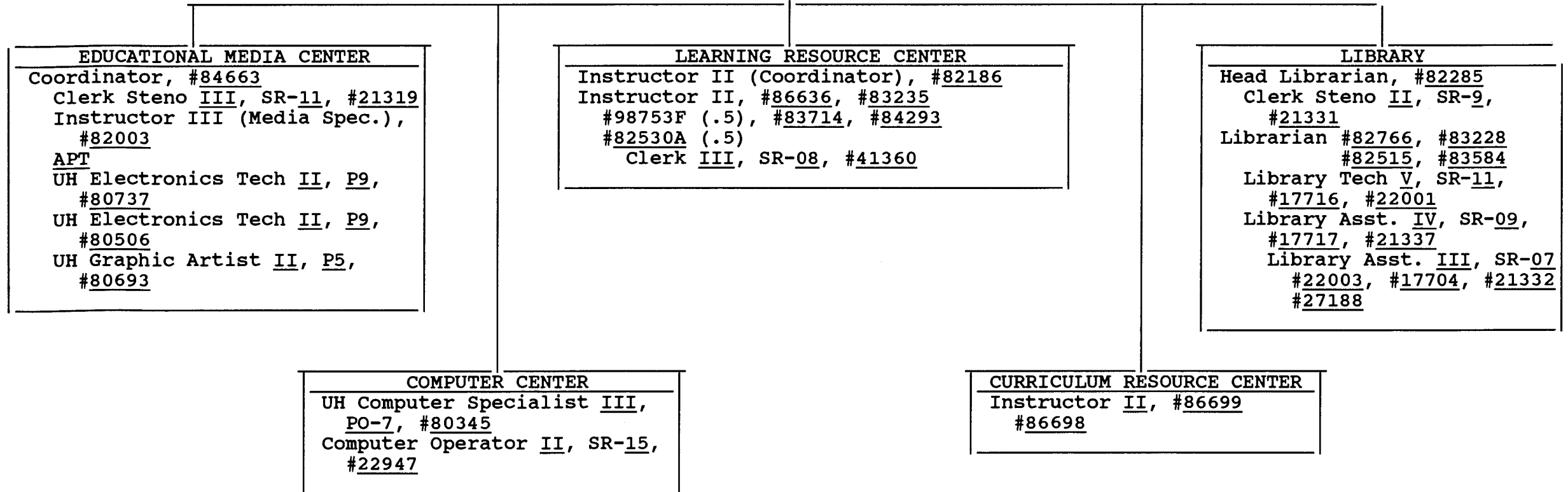


CHART UPDATED
JUN 30 1989
DATE

STATE OF HAWAII
UNIVERSITY OF HAWAII
LEEWARD COMMUNITY COLLEGE

INSTRUCTION
Waianae-Nanakuli Instruction

Position Organization Chart 06/30/88

Chart IV-E

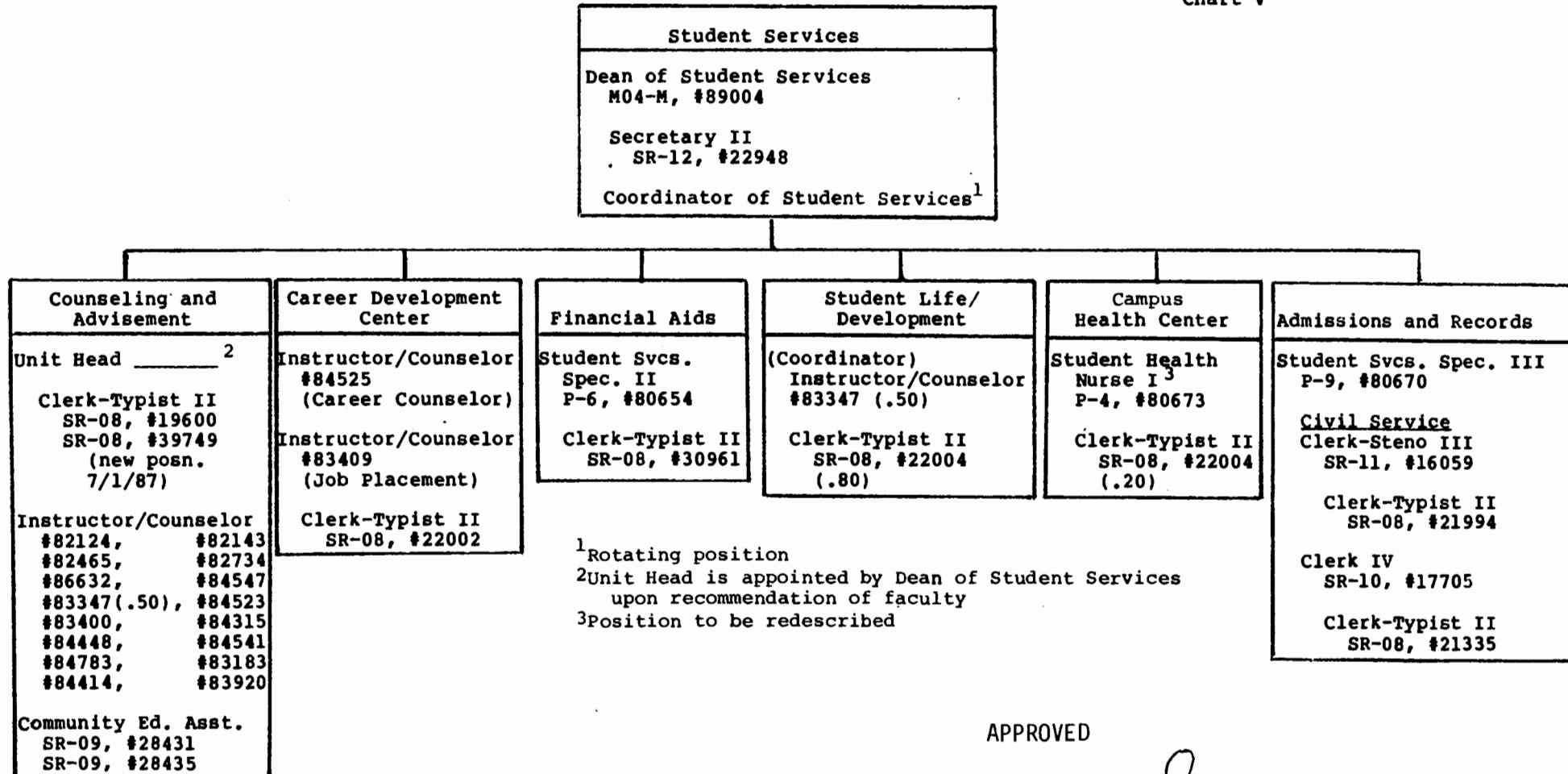
<u>Waianae-Nanakuli Education Center</u>
Coordinator* (1.0)
Clerk Steno II, SR 09, #26797, (1.0)
Educ. Spec. I, P 03, #81032, (1.0)
Instructors (2.0) #

*Rotating faculty position; administratively assigned


#Rotating faculty positions from divisions

CHART UPDATED
DATE JUN 30 1989

State of Hawaii
University of Hawaii
Leeward Community College
Student Services
Chart V



APPROVED


President, University of Hawaii

SEP 20 1989

Date

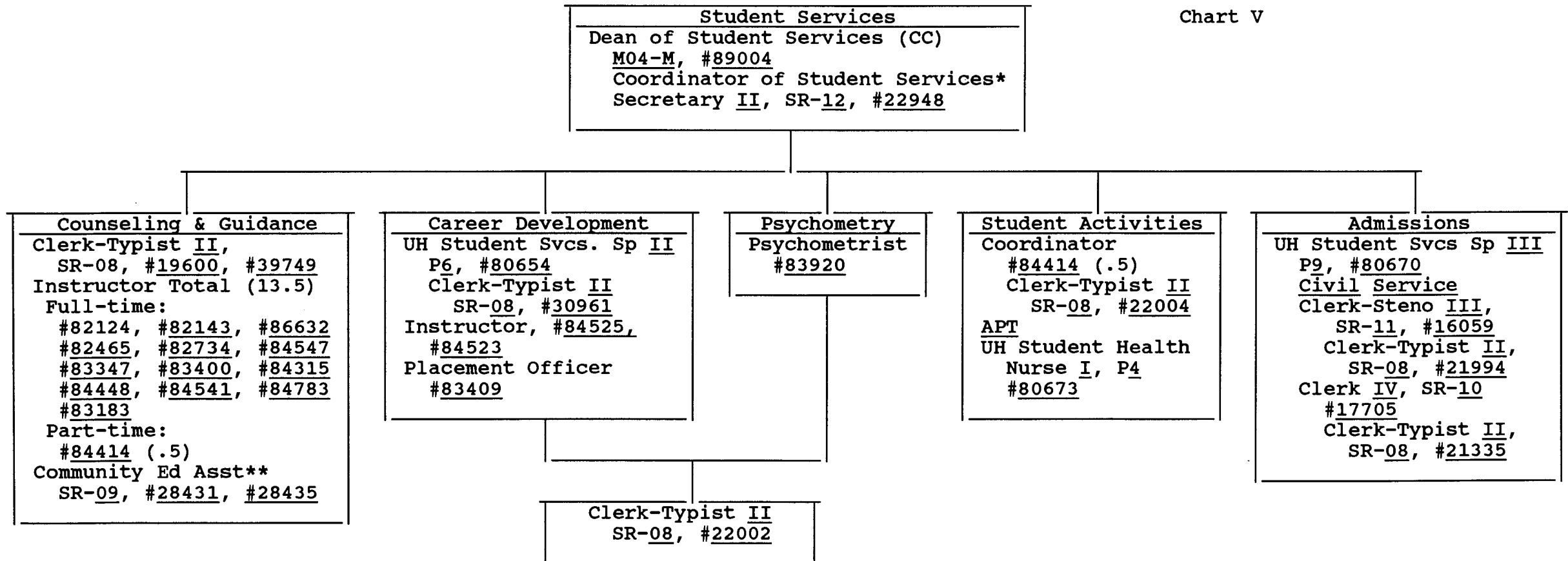
STATE OF HAWAII
UNIVERSITY OF HAWAII
LEEWARD COMMUNITY COLLEGE

STUDENT SERVICES

Position Organization Chart

06/30/89

Chart V



*Rotating position
 **Assigned to Waianae-Nanakuli Education Center

*Revised per reorg
 apprd by BOR
 9/15/89.*

JUN 30 1989

STATE OF HAWAII
UNIVERSITY OF HAWAII
LEEWARD COMMUNITY COLLEGE
EDUCATIONAL SERVICES

Position Organization Chart

06/30/89

Chart VI

Public Services
Director of Special Programs
and Community Services
M04-M, #89151

Secretary II
SR-12, #21639

Theatre
Events

UH Ed. Sp. II
P 6, #80462 (.5)

UH Theatre
Manager
P 6, #80118

UH Theatre Tech.
P 7, #80701

CHART UPDATED
JUN 30 1989
DATE

STATE OF HAWAII
UNIVERSITY OF HAWAII
LEEWARD COMMUNITY COLLEGE

ADMINISTRATIVE SERVICES

Administrative Services
Director, M05-M, #89083

Position Organization Chart

06/30/88

Chart VII

Secretary II
SR-12, #21992

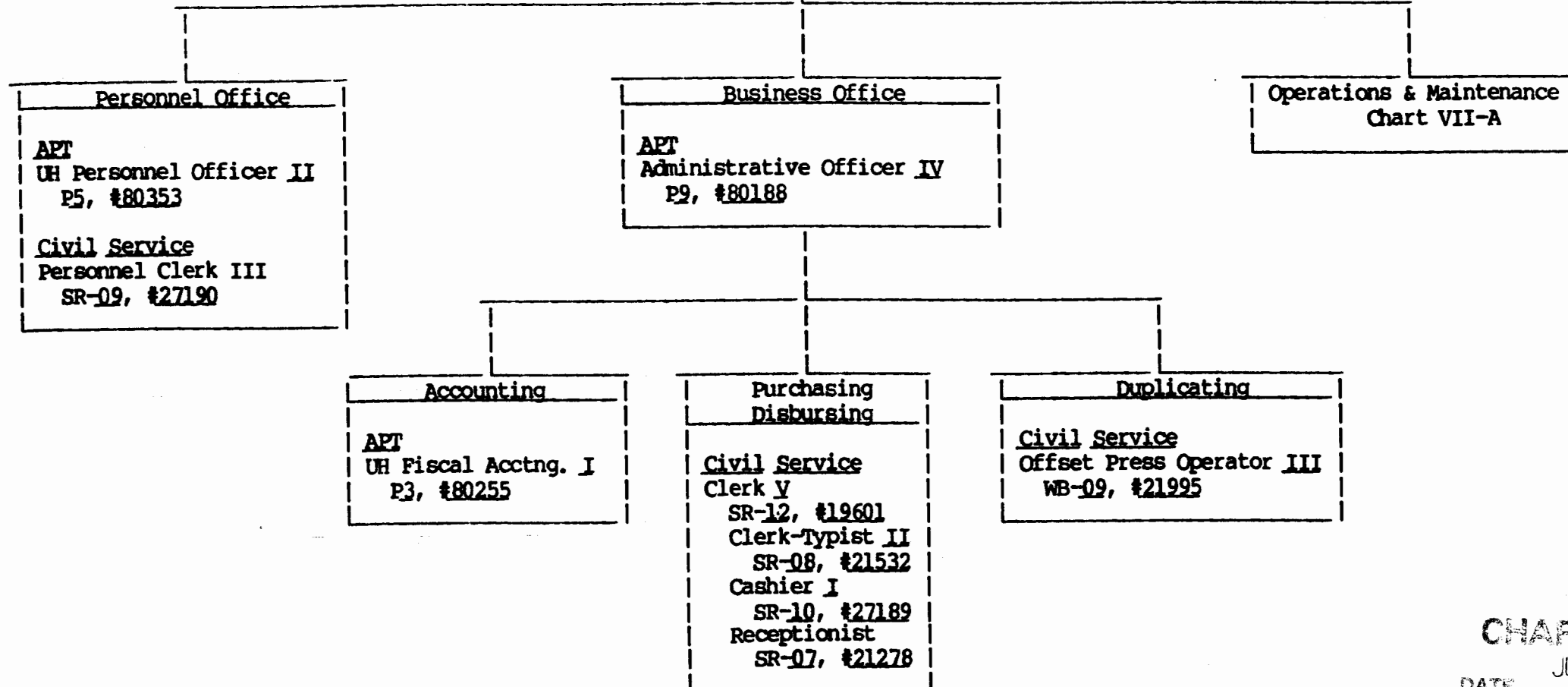
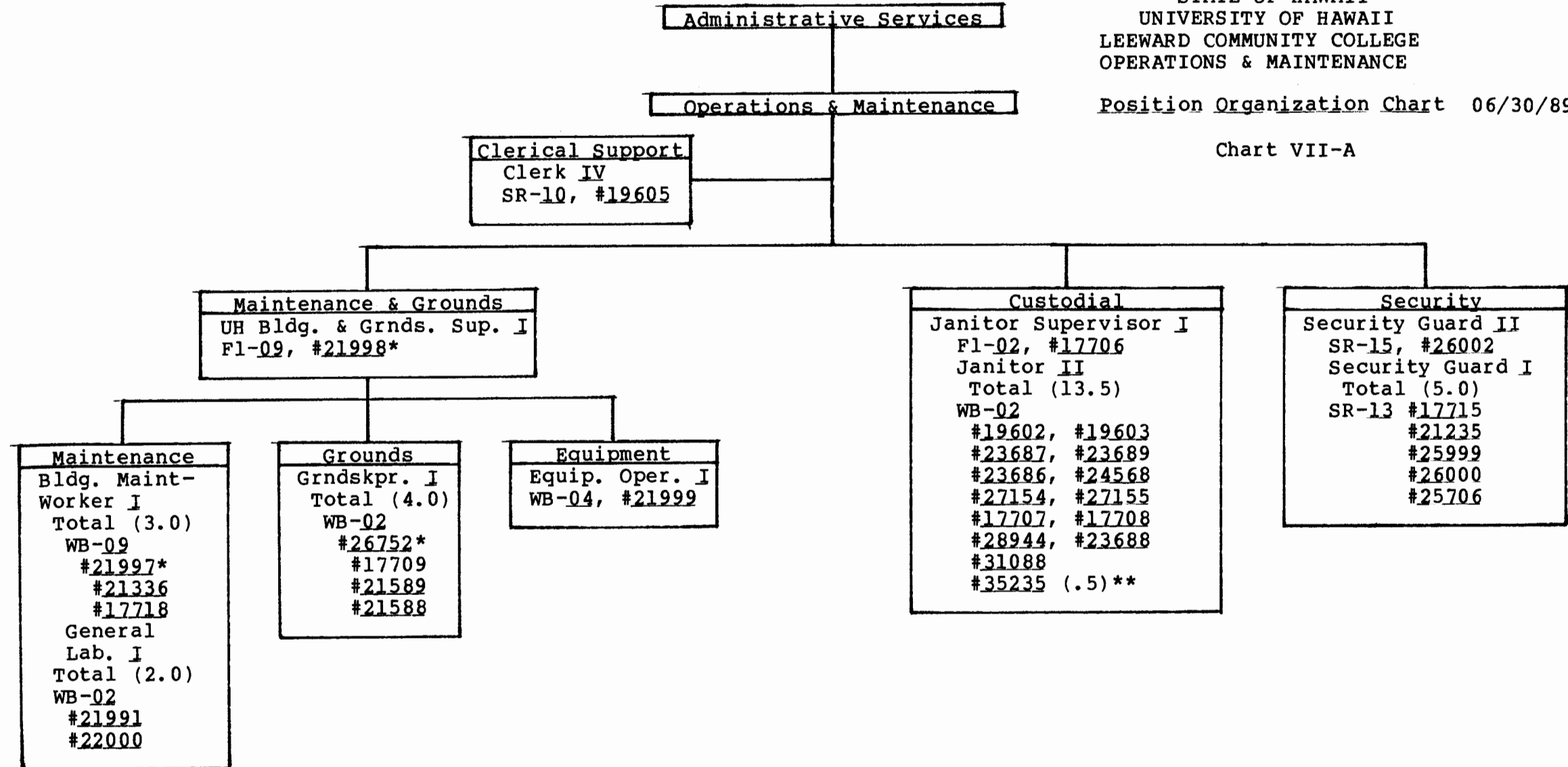


CHART UPDATED
JUN 30 1989
DATE

STATE OF HAWAII
UNIVERSITY OF HAWAII
LEEWARD COMMUNITY COLLEGE
OPERATIONS & MAINTENANCE

Position Organization Chart 06/30/89

Chart VII-A



*To be reallocated

**Assigned to Waianae-Nanakuli Education Center

CHART UPDATED
JUN 30 1989