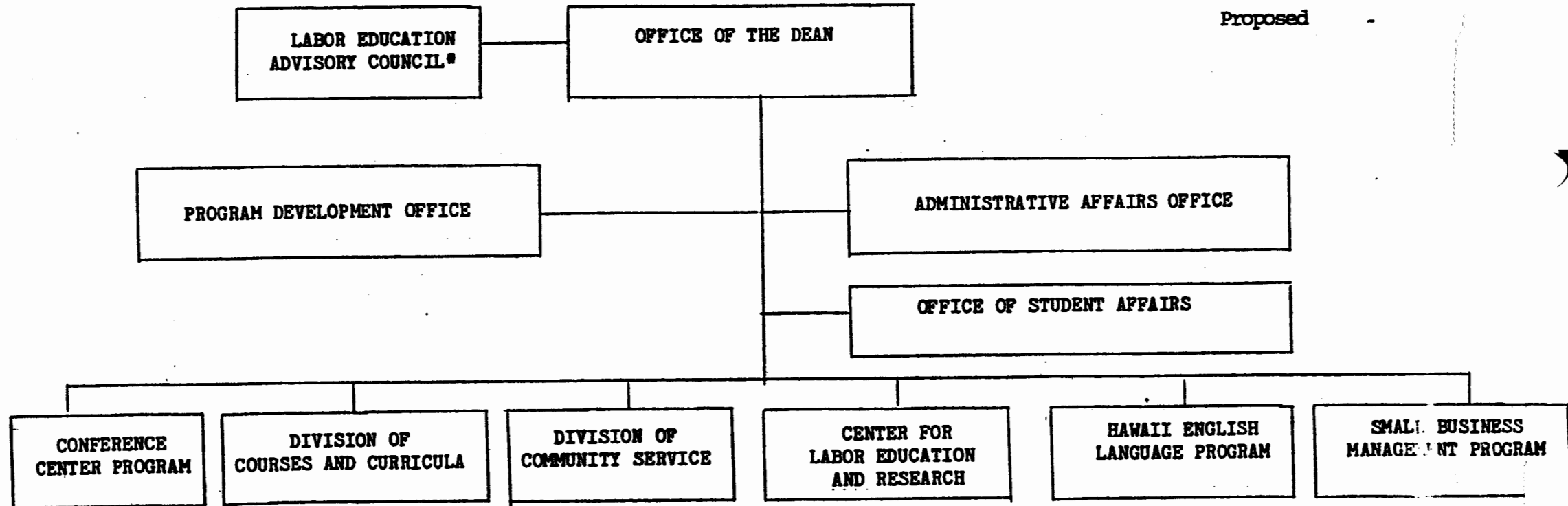


UNIVERSITY OF HAWAII AT MANOA
COLLEGE OF CONTINUING EDUCATION
AND COMMUNITY SERVICE -

Organization Chart

Chart I

Proposed



*Act 202, SLH 1976, Advisory Body to the Dean
for the Center for Labor Education and Research

Approved by: *[Signature]*

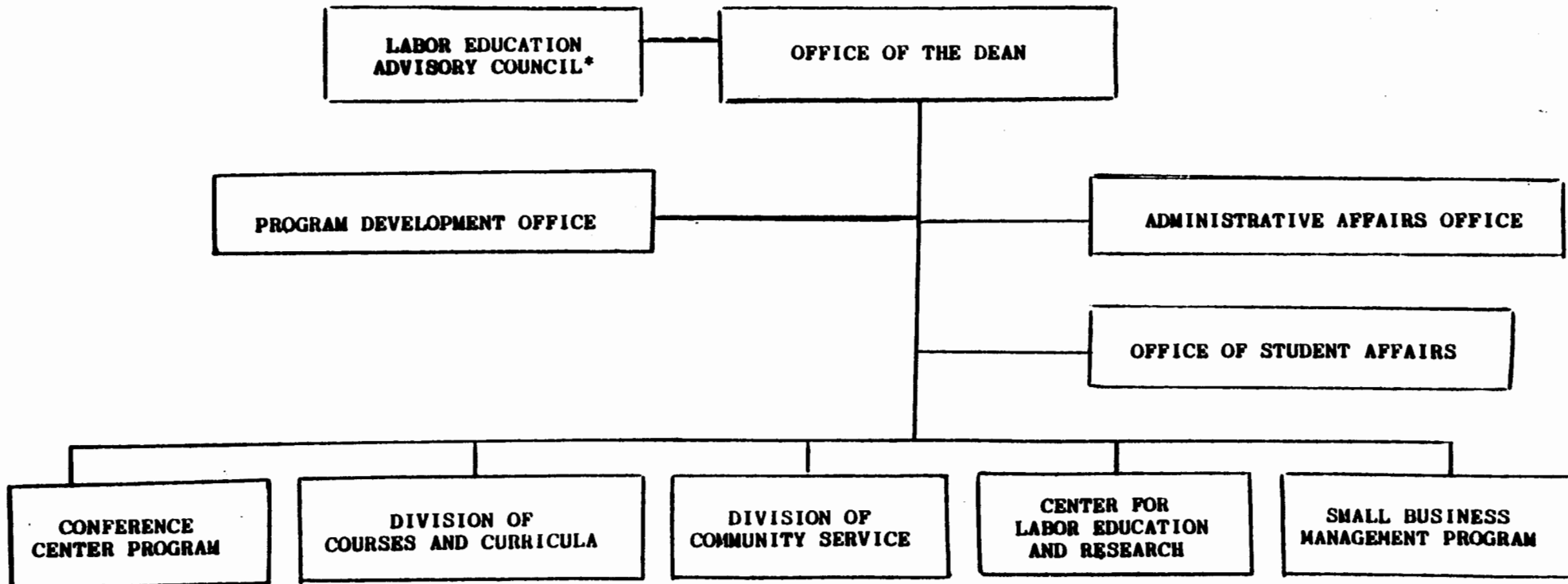
Title: Dean

Date: NOV 14 1989

UNIVERSITY OF HAWAII AT MANOA
COLLEGE OF CONTINUING EDUCATION
AND COMMUNITY SERVICE

Organization Chart

Chart I



*Act 202, SLH 1976, Advisory Body to the Dean
for the Center for Labor Education and Research

SUPERSEDED

REORG. Nov. 17, 1989

CHART UPDATED

DATE JUN 30 1989

UNIVERSITY OF HAWAII AT MANOA
COLLEGE OF CONTINUING EDUCATION
AND COMMUNITY SERVICE

Office of the Dean and Staff Offices
Position Organization Chart
CHART II

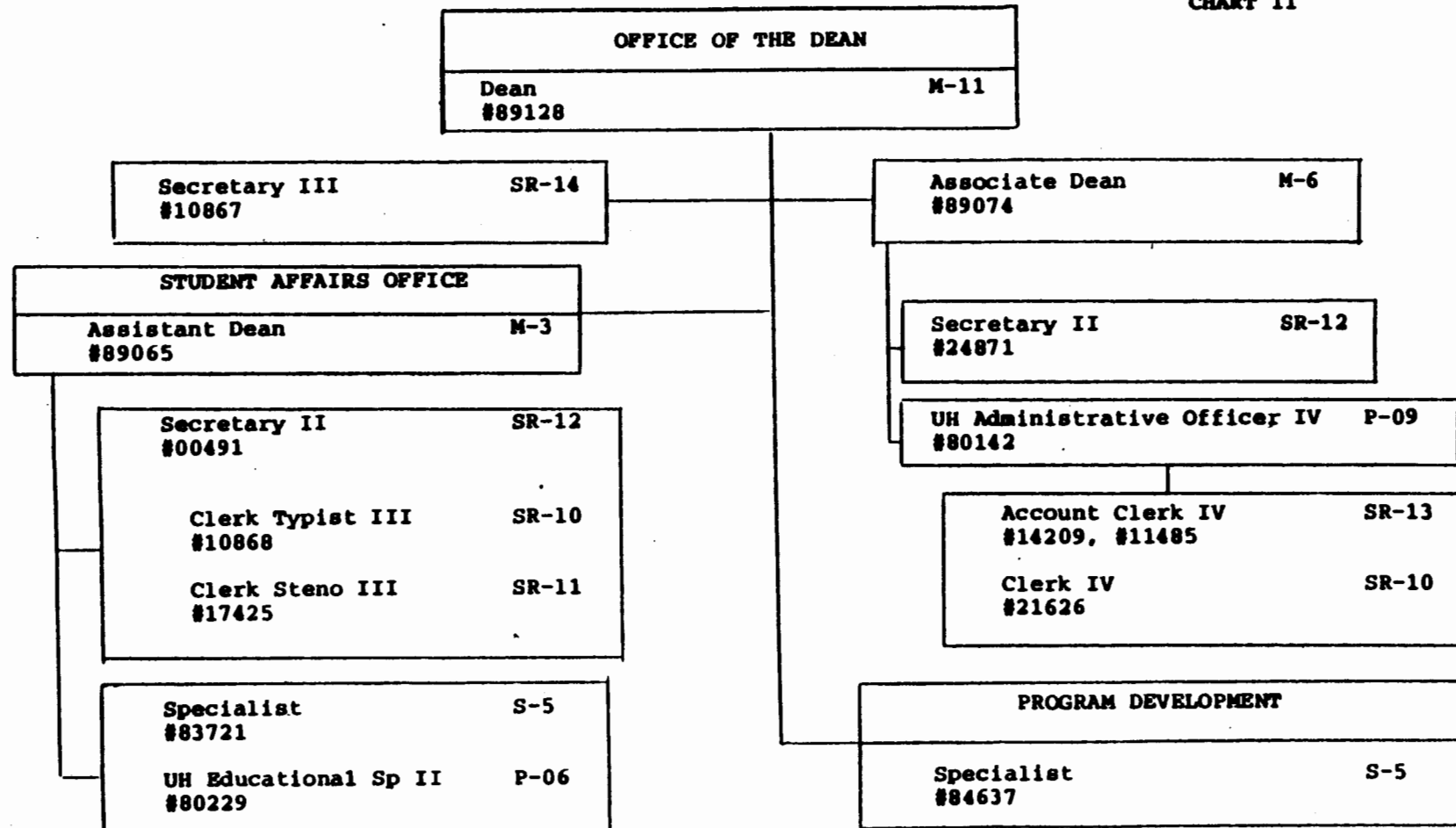


CHART UPDATED

DATE JUN 30 1989

UNIVERSITY OF HAWAII AT MANOA
 COLLEGE OF CONTINUING EDUCATION
 AND COMMUNITY SERVICE
Division of Courses and Curricula
 EXTENDED PROGRAMS

Position Organization Chart
 Chart III

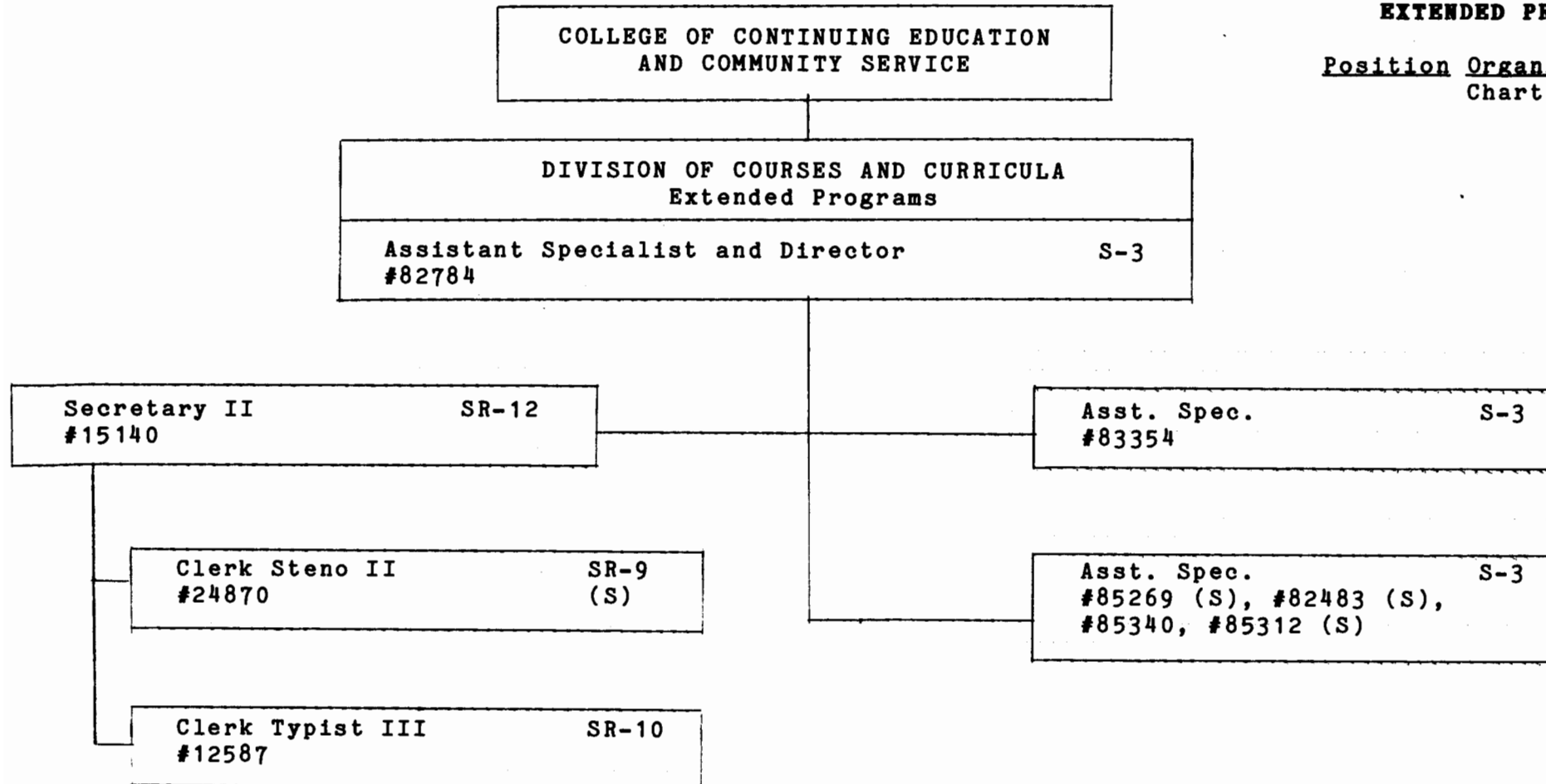
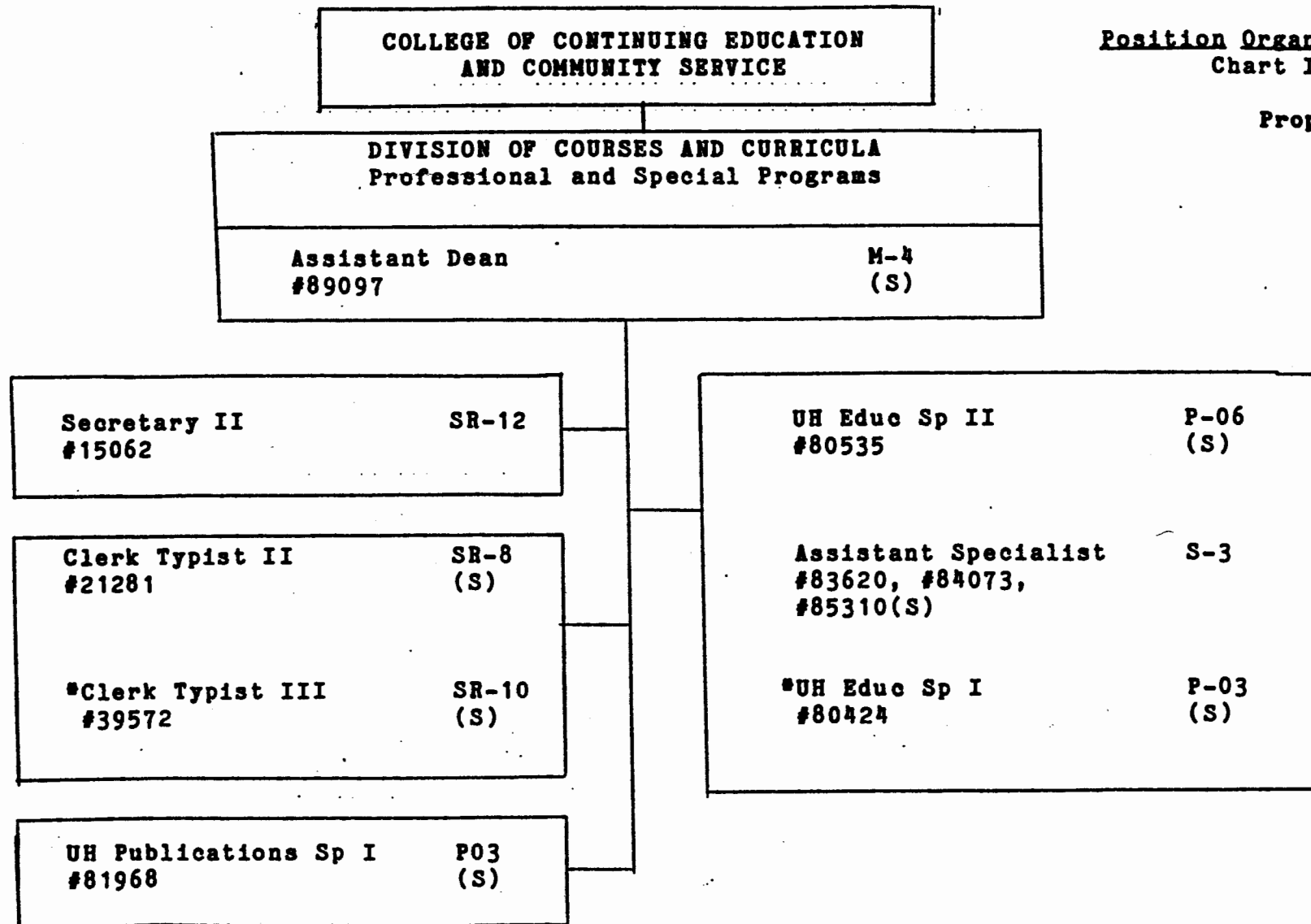


CHART UPDATED
 DATE JUN 30 1989

UNIVERSITY OF HAWAII AT MANOA
COLLEGE OF CONTINUING EDUCATION
AND COMMUNITY SERVICE
Division of Courses and Curricula
PROFESSIONAL AND SPECIAL PROGRAMS

Position Organization Chart
Chart III - A

Proposed



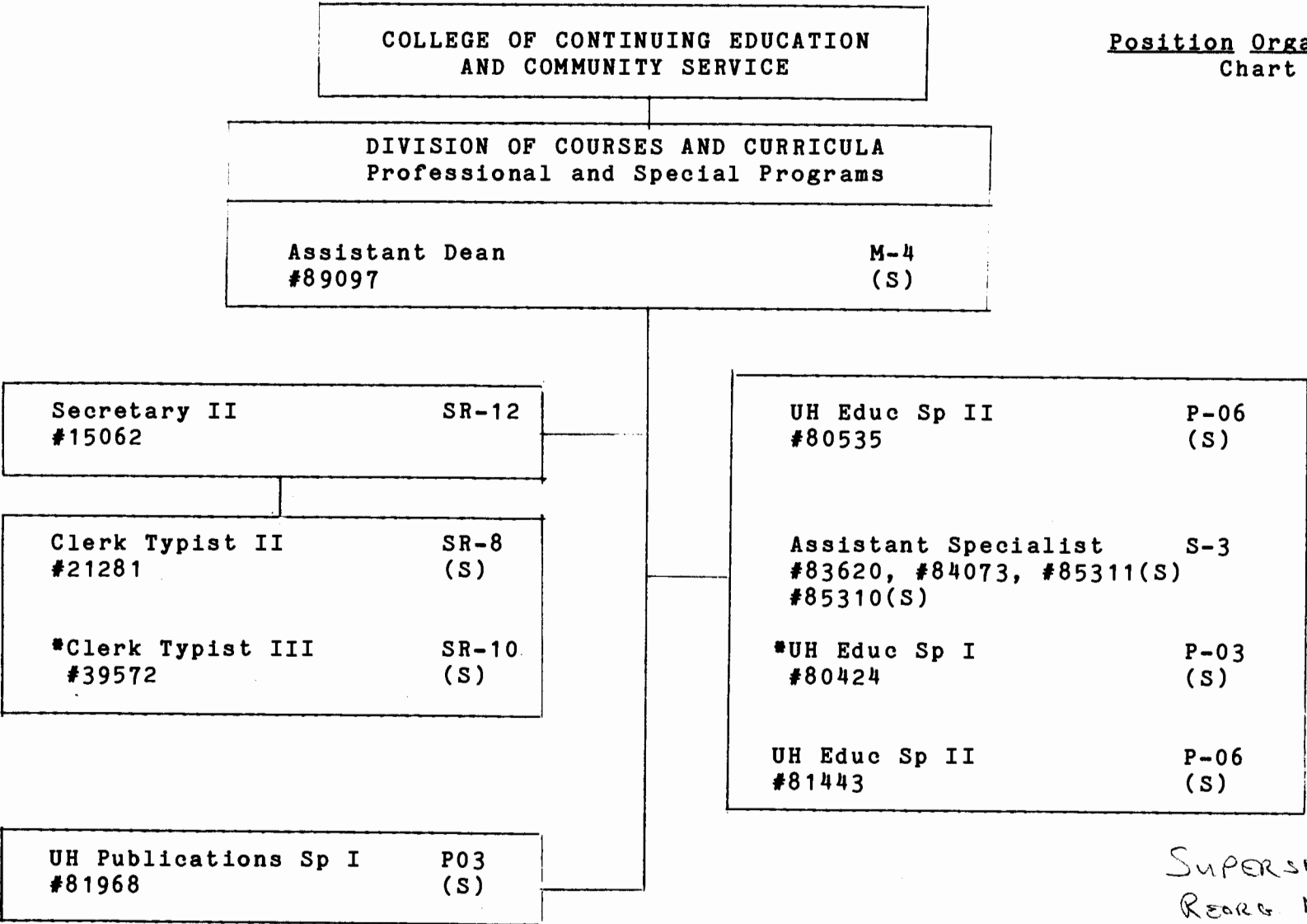
Approved by: *[Signature]*

Title: *Dean*

Date: NOV 14 1989

UNIVERSITY OF HAWAII AT MANOA
COLLEGE OF CONTINUING EDUCATION
AND COMMUNITY SERVICE
Division of Courses and Curricula
PROFESSIONAL AND SPECIAL PROGRAMS

Position Organization Chart
Chart III - A



SUPERSEDED
Reorg NOV. 14, 1989

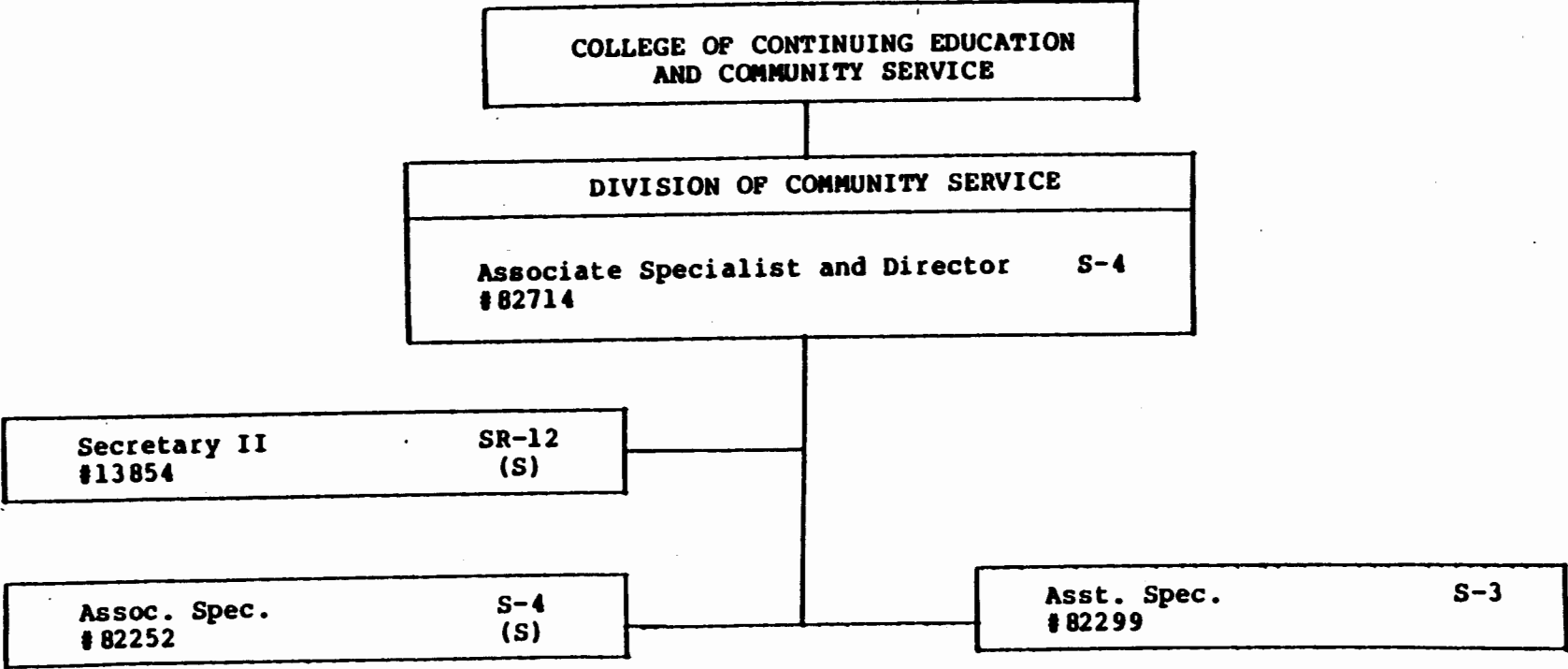
CHART UPDATED

JUN 30 1989

UNIVERSITY OF HAWAII AT MANOA
College of Continuing Education
and Community Service

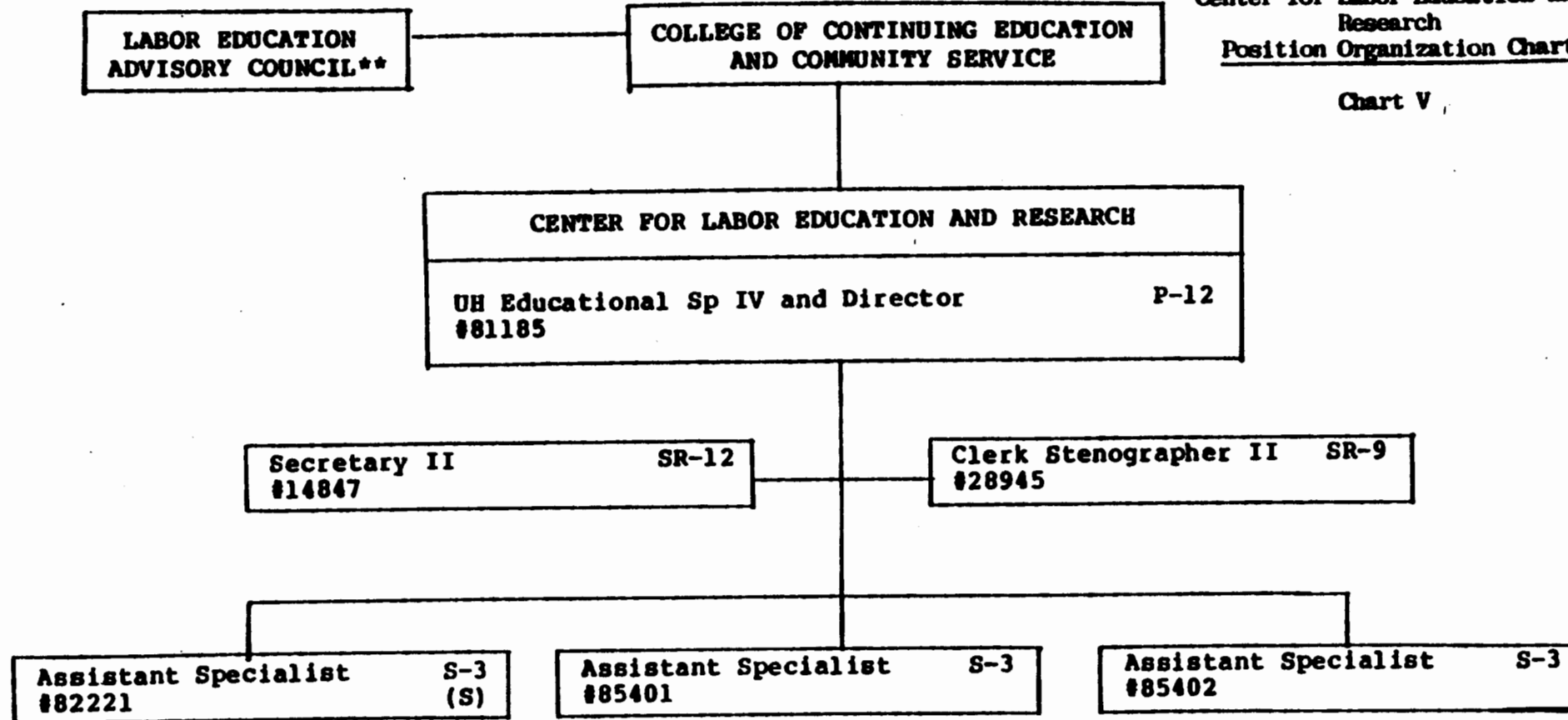
Division of Community Service
Position Organization Chart

Chart IV



State of Hawaii
 University of Hawaii at Manoa
 College of Continuing Education and
 and Community Service
 Center for Labor Education and
 Research
Position Organization Chart

Chart V



**Act 202, SLH 1976, Advisory Body to the Dean of CCECS.

CLERUPD

Jul 20 1989

State of Hawaii
University of Hawaii at Manoa
College of Continuing Education
and Community Service

Small Business Management Program
Position Organization Chart

Chart VI

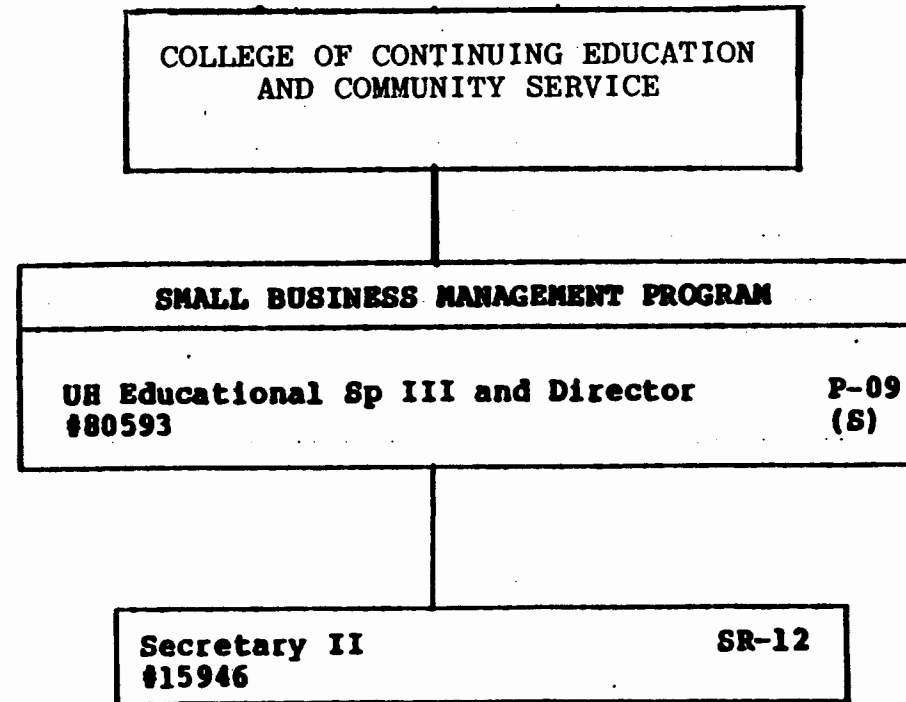


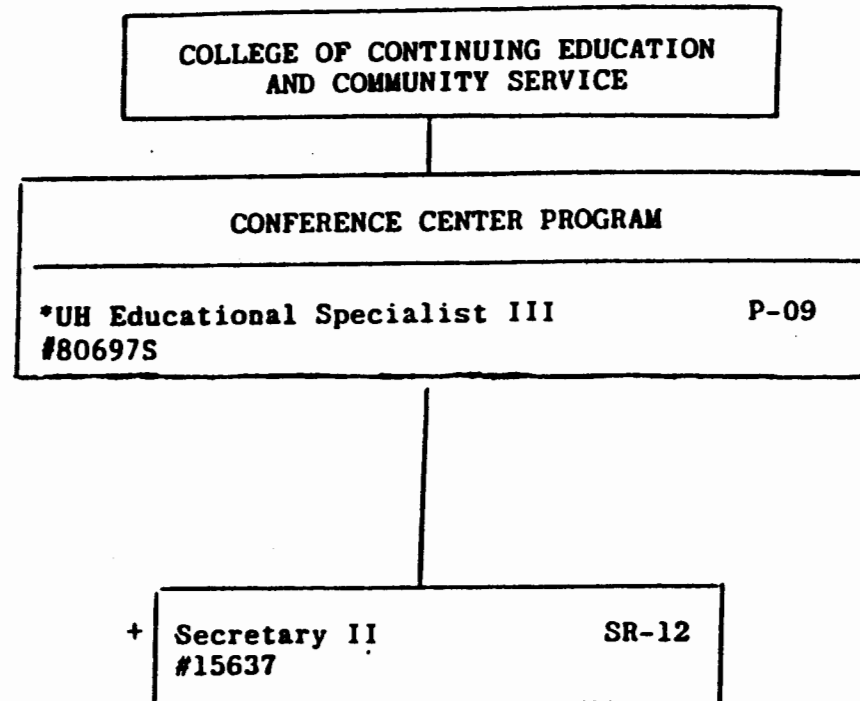
CHART UPDATED

JUN 30 1989

UNIVERSITY OF HAWAII
College of Continuing Education and
Community Service

The Conference Center
Position Organization Chart

Chart VII



+Transferred from Division of Community Service,
permanent position.

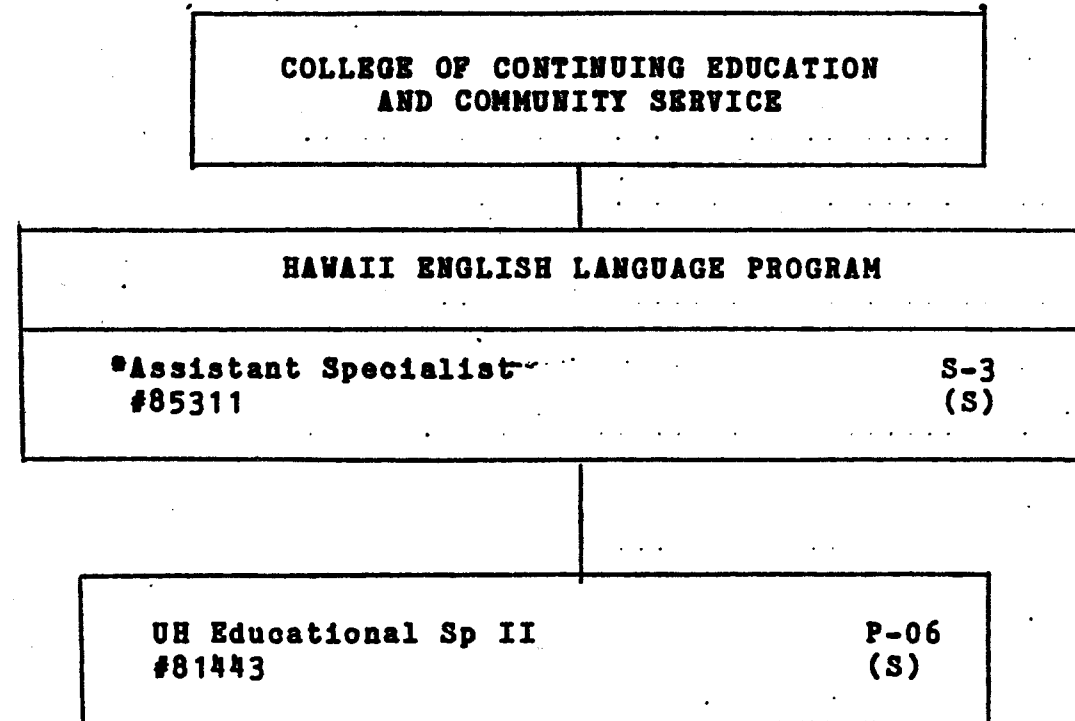
*Temporary position

CHART UPDATED
DATE JUN 30 1989

UNIVERSITY OF HAWAII AT MANOA
COLLEGE OF CONTINUING EDUCATION
AND COMMUNITY SERVICE
HAWAII ENGLISH LANGUAGE PROGRAM

Position Organization Chart
Chart VIII

Proposed



*To be reclassified to UH Educational Specialist III

Approved by: *[Signature]*

Title: Dean

Date: NOV 14 1989