

STATE OF HAWAII
UNIVERSITY OF HAWAII
UNIVERSITY OF HAWAII AT MANOA
COLLEGE OF EDUCATION

ORGANIZATIONAL CHART

CHART I

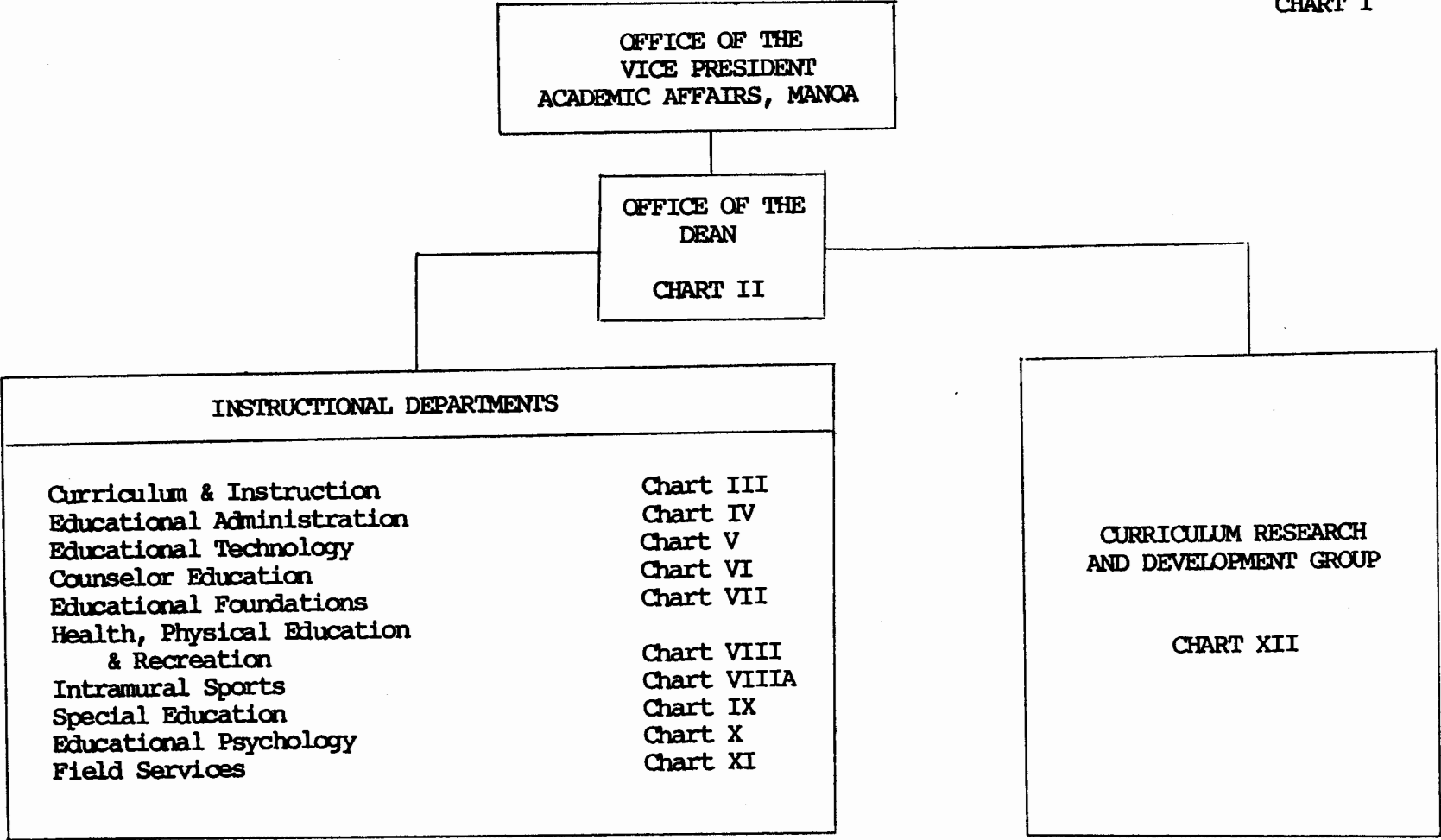


CHART UPDATED
DATE JUN 30 1989

STATE OF HAWAII
UNIVERSITY OF HAWAII
UNIVERSITY OF HAWAII AT MANOA
COLLEGE OF EDUCATION
OFFICE OF THE DEAN

POSITION ORGANIZATIONAL CHART

CHART II

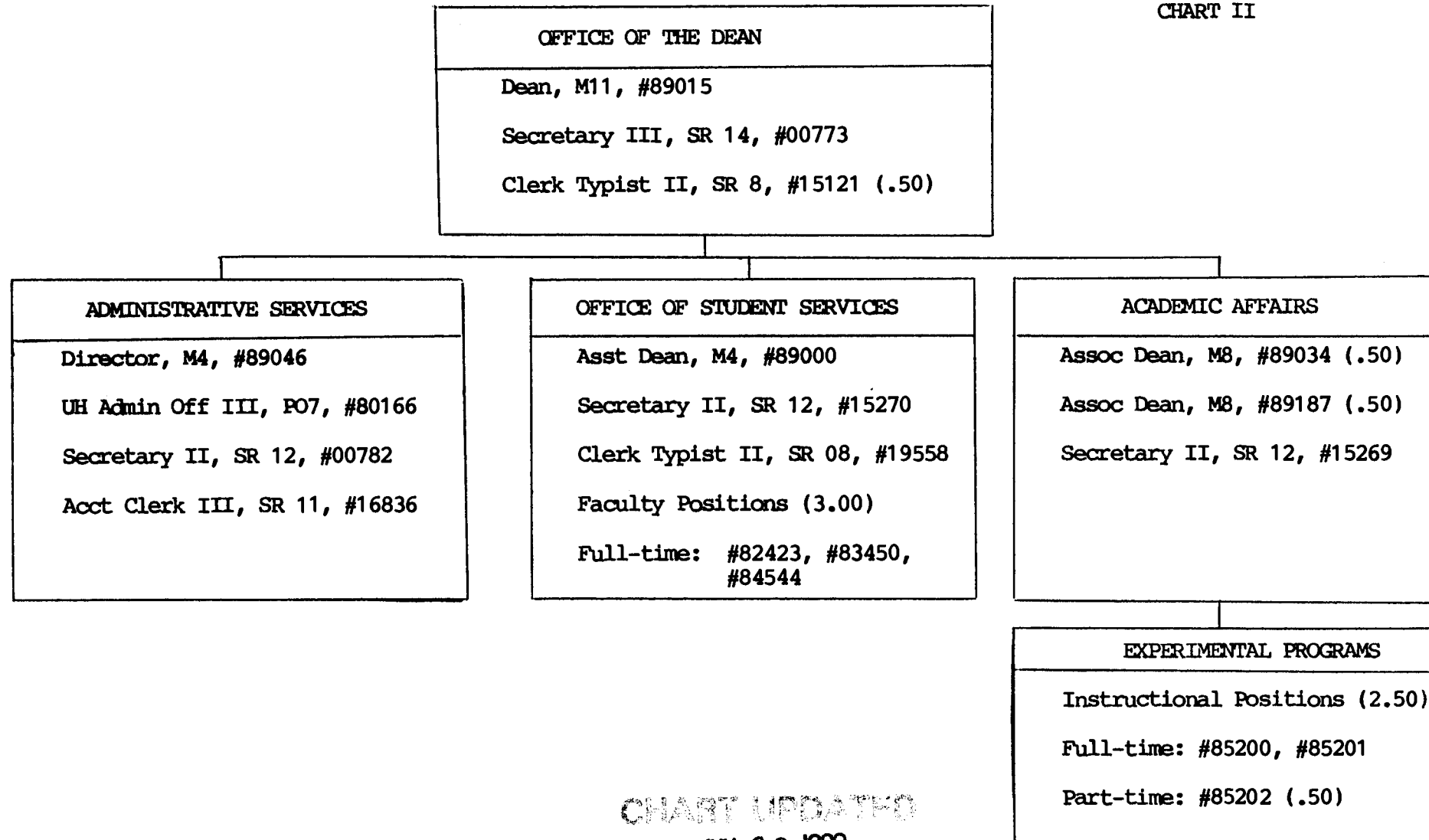


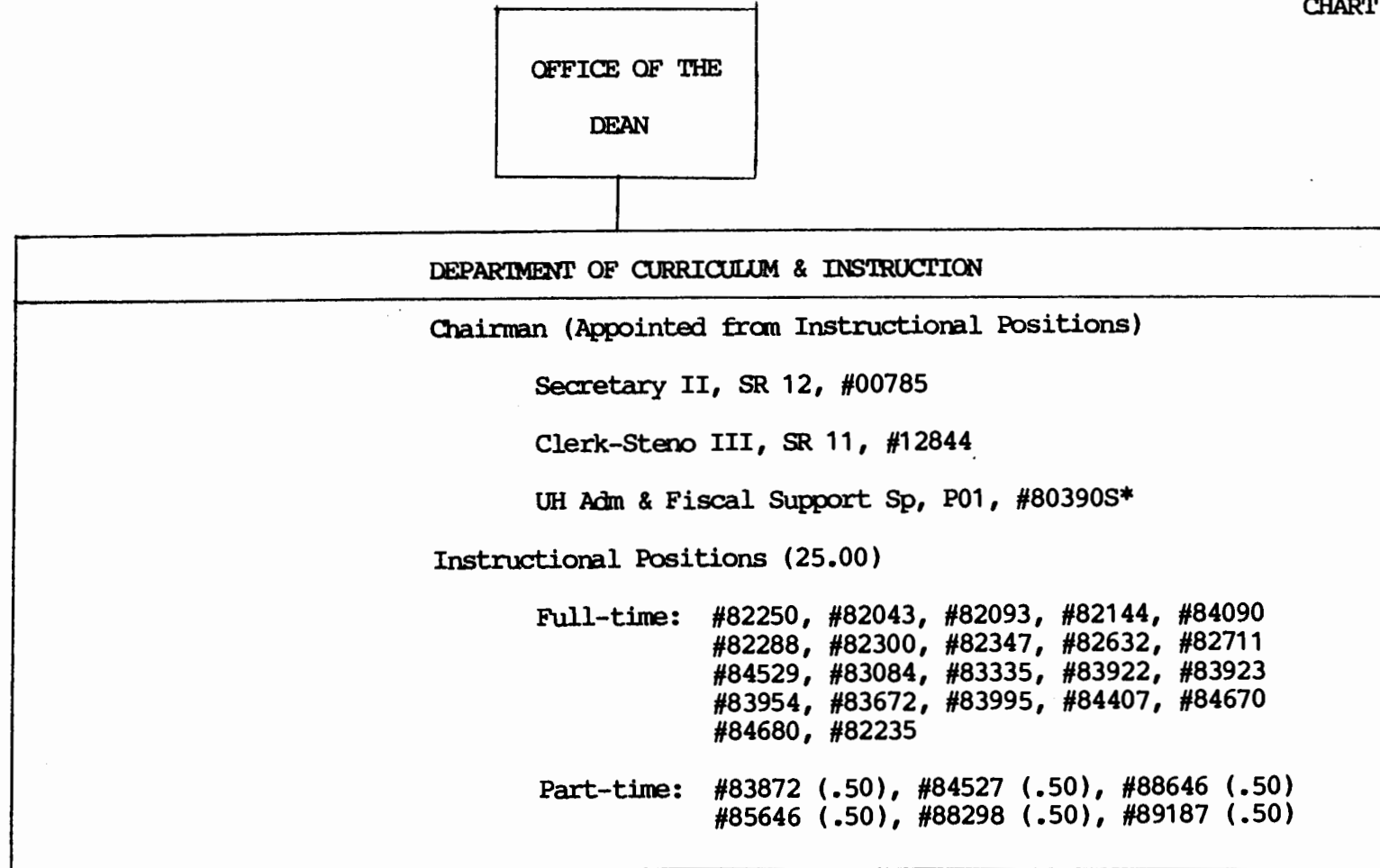
CHART UPDATED
JUN 30 1989
DATE

AUG 4 1989

STATE OF HAWAII
UNIVERSITY OF HAWAII
UNIVERSITY OF HAWAII AT MANOA
COLLEGE OF EDUCATION
CURRICULUM AND INSTRUCTION

POSITION ORGANIZATION CHART

CHART III



*Temporary position: Center for Economic Education

CHART UPDATED
DATE JUN 30 1989

AUG 4 1989

STATE OF HAWAII
UNIVERSITY OF HAWAII
UNIVERSITY OF HAWAII AT MANOA
COLLEGE OF EDUCATION
EDUCATIONAL ADMINISTRATION

POSITION ORGANIZATION CHART

CHART IV

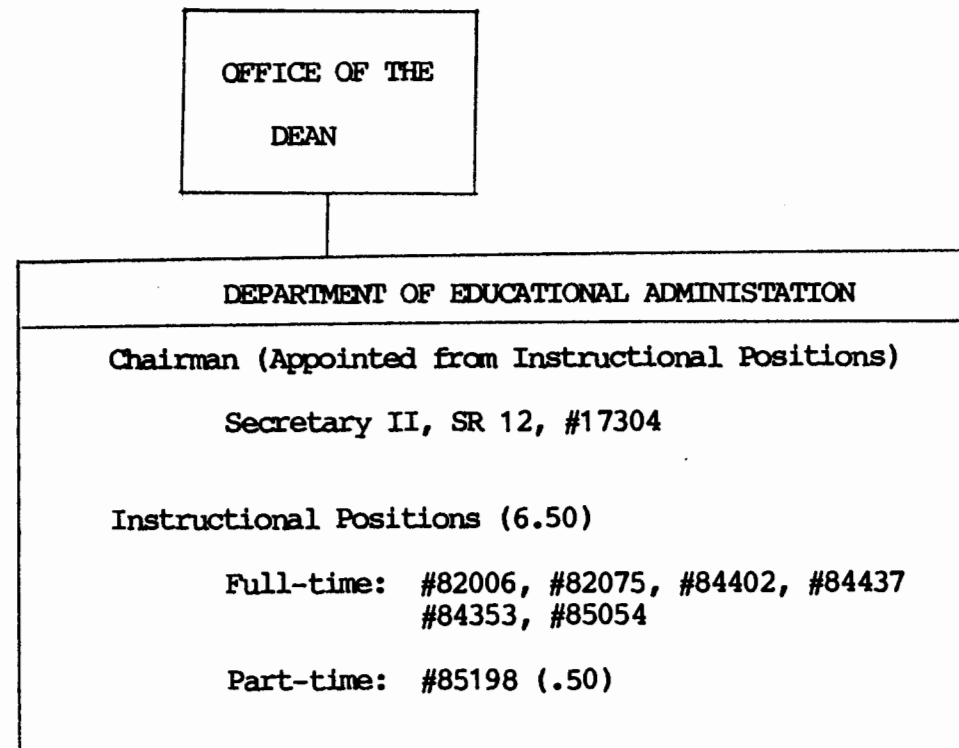


CHART UPDATED
JUN 30 1989
DATE _____

AUG 4 1989

STATE OF HAWAII
UNIVERSITY OF HAWAII
UNIVERSITY OF HAWAII AT MANOA
COLLEGE OF EDUCATION
EDUCATIONAL TECHNOLOGY

POSITION ORGANIZATION CHART

CHART V

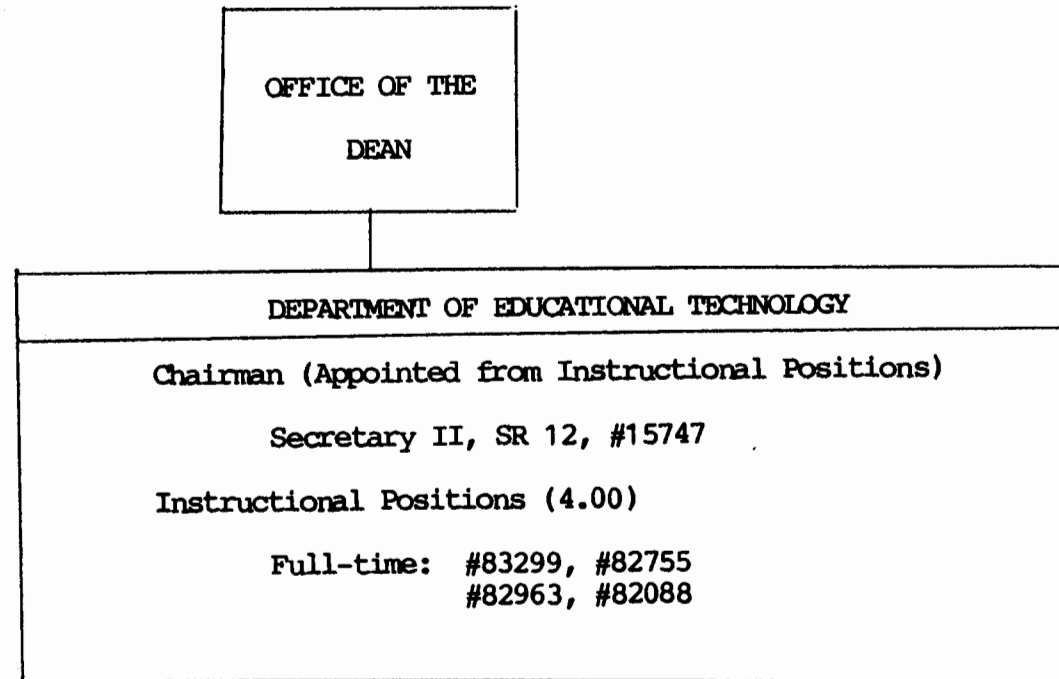


CHART UPDATED

DATE JUN 30 1989

AUG 4 1989

STATE OF HAWAII
UNIVERSITY OF HAWAII
UNIVERSITY OF HAWAII AT MANOA
COLLEGE OF EDUCATION
COUNSELOR EDUCATION

POSITION ORGANIZATION CHART

CHART VI

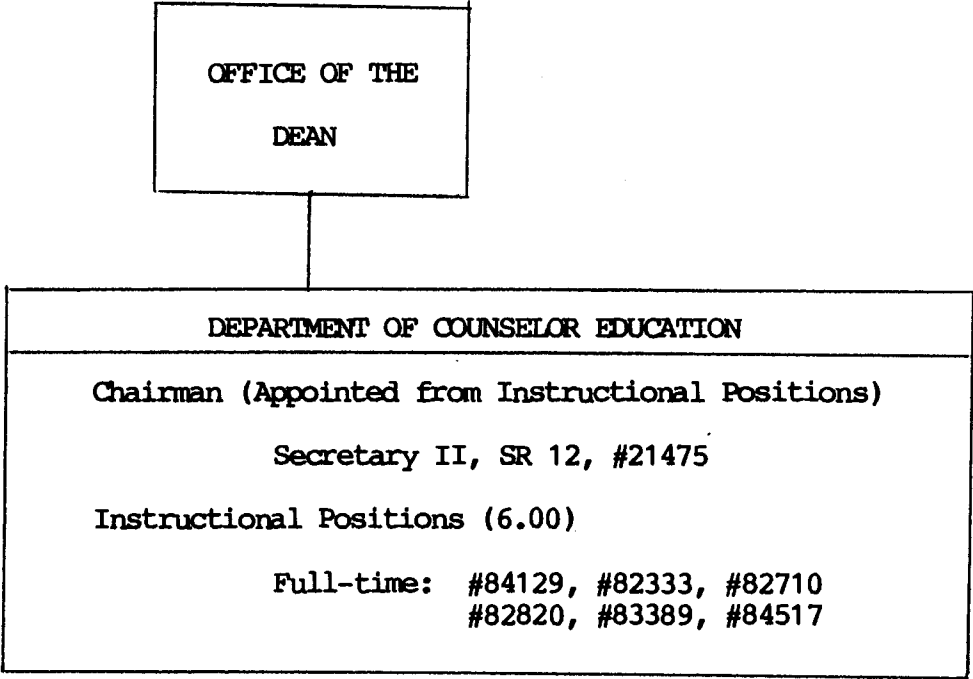


CHART UPDATED
JUN 30 1989
DATE _____

AUG 4 1989

STATE OF HAWAII
UNIVERSITY OF HAWAII
UNIVERSITY OF HAWAII AT MANOA
COLLEGE OF EDUCATION
EDUCATIONAL FOUNDATIONS

POSITION ORGANIZATION CHART

CHART VII

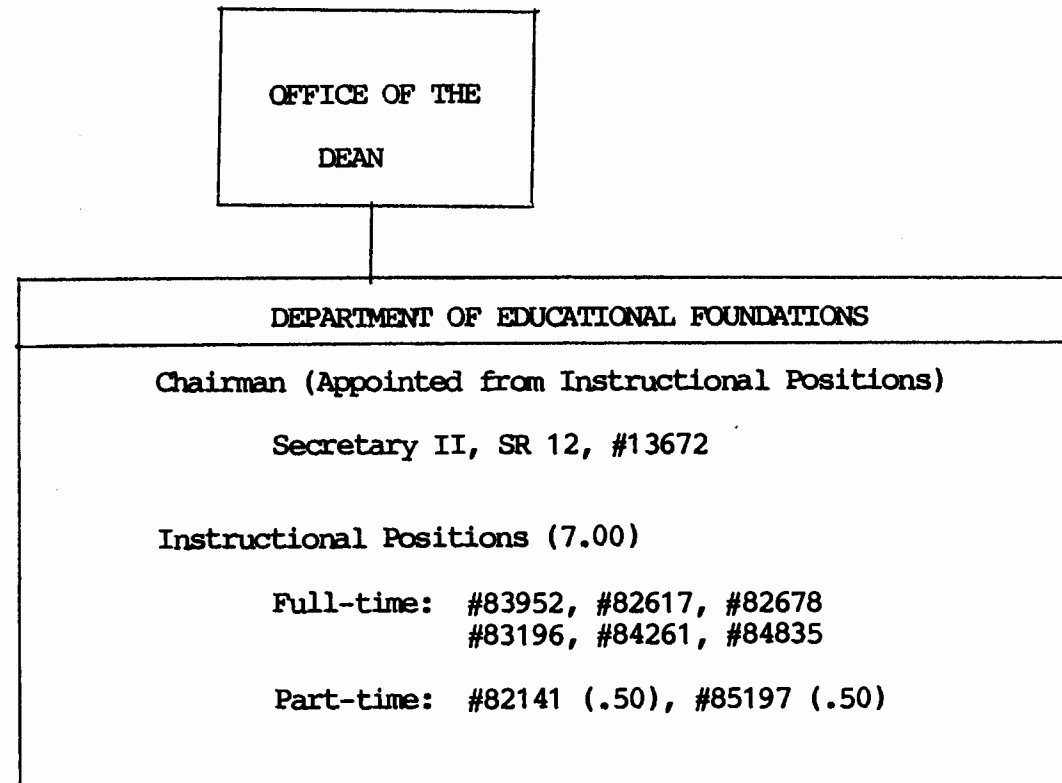


CHART UPDATED
DATE JUN 30 1989

AUG 4 1989

STATE OF HAWAII
UNIVERSITY OF HAWAII
UNIVERSITY OF HAWAII AT MANOA
COLLEGE OF EDUCATION
HEALTH, PHYSICAL EDUCATION & RECREATION

POSITION ORGANIZATION CHART

CHART VIII

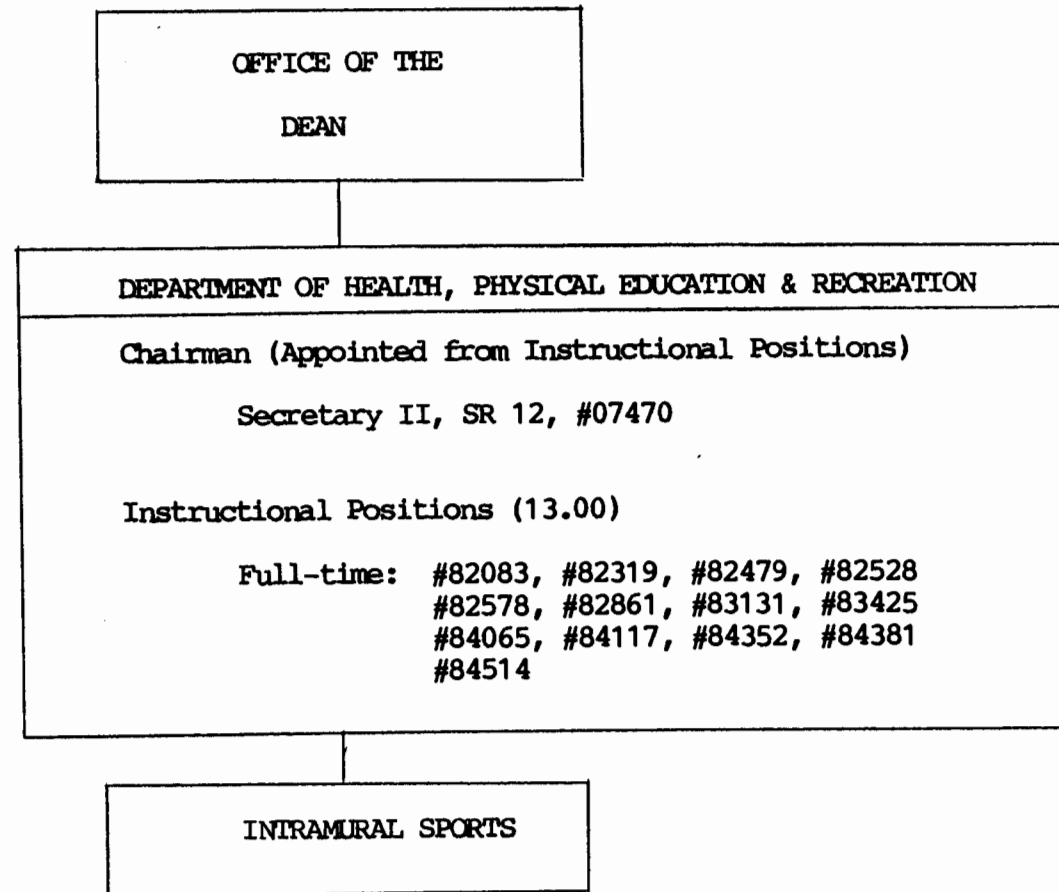


CHART UPDATED
JUN 30 1989
DATE

AUG 4 1989

STATE OF HAWAII
UNIVERSITY OF HAWAII
UNIVERSITY OF HAWAII AT MANOA
COLLEGE OF EDUCATION
INTRAMURAL SPORTS

POSITION ORGANIZATION CHART

CHART VIIIA

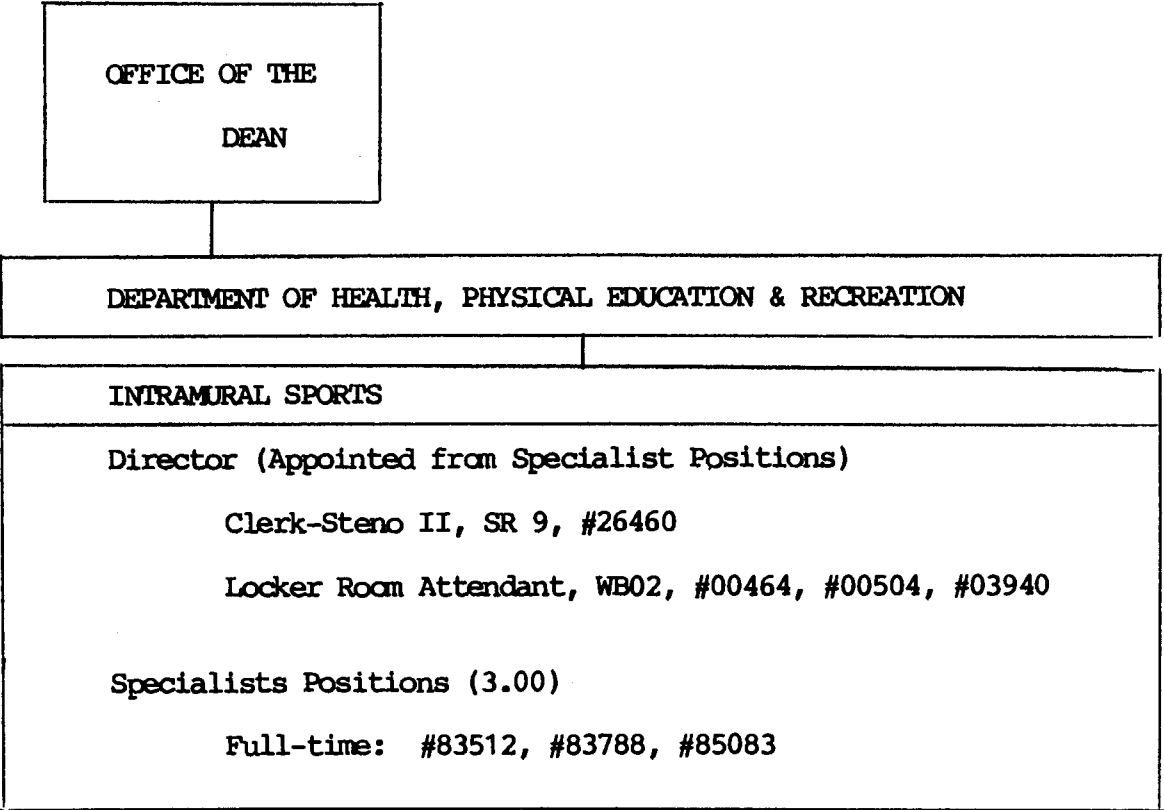


CHART UPDATED
DATE JUN 30 1989

STATE OF HAWAII
UNIVERSITY OF HAWAII
UNIVERSITY OF HAWAII AT MANOA
COLLEGE OF EDUCATION
SPECIAL EDUCATION

POSITION ORGANIZATION CHART

CHART IX

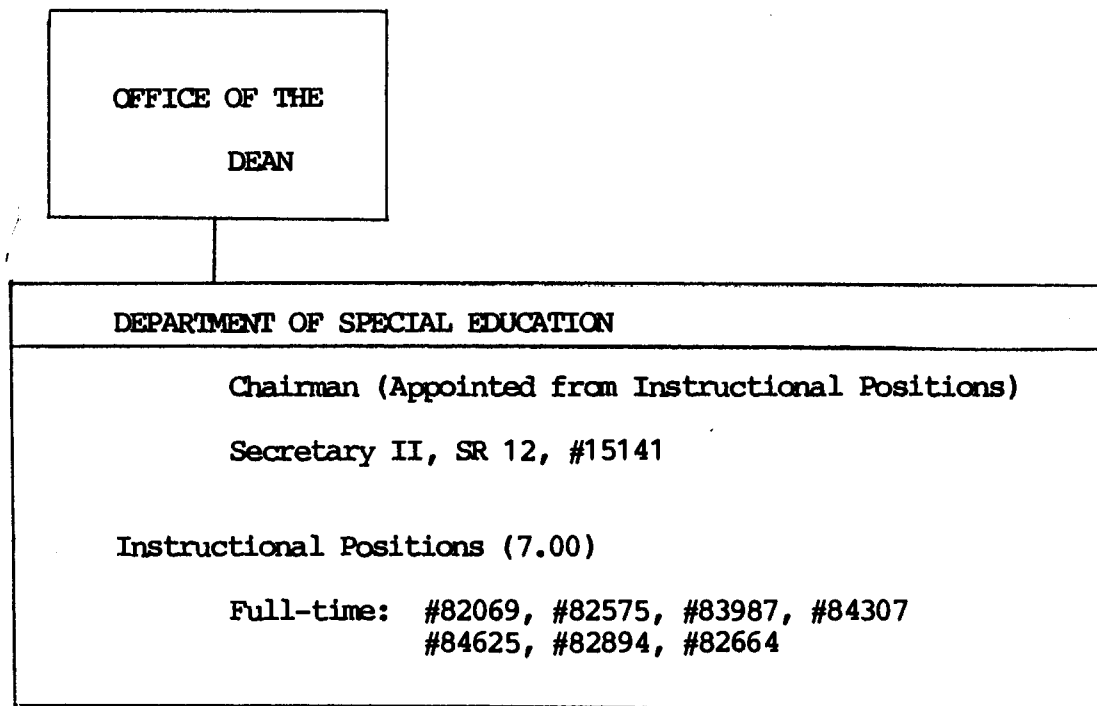


CHART UPDATED
JUN 30 1989
DATE

AUG 4 1989

STATE OF HAWAII
UNIVERSITY OF HAWAII
UNIVERSITY OF HAWAII AT MANOA
COLLEGE OF EDUCATION
EDUCATIONAL PSYCHOLOGY

POSITION ORGANIZATION CHART

CHART X

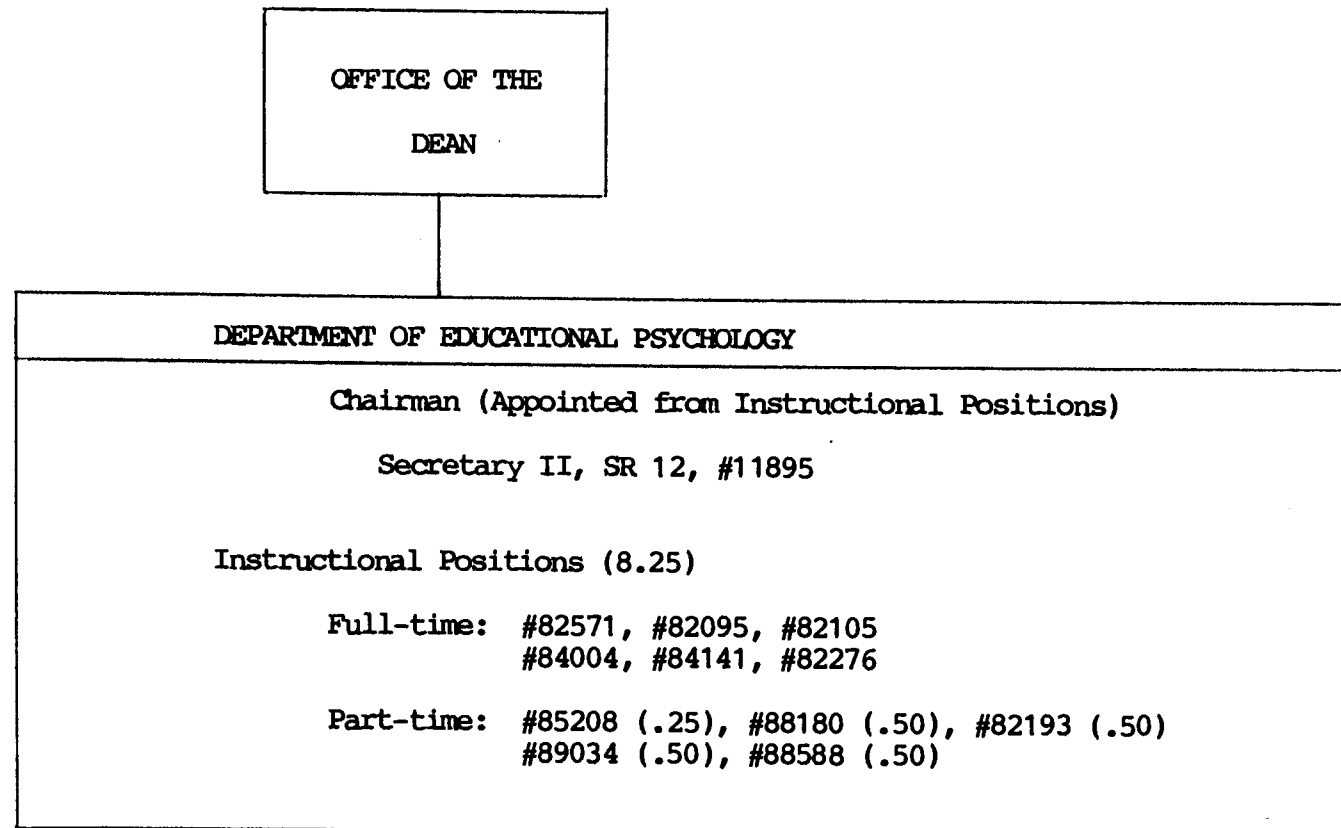


CHART UPDATED
DATE JUN 30 1989

AUG 4 1989

STATE OF HAWAII
UNIVERSITY OF HAWAII
UNIVERSITY OF HAWAII AT MANOA
COLLEGE OF EDUCATION
FIELD SERVICES

POSITION ORGANIZATION CHART

CHART XI

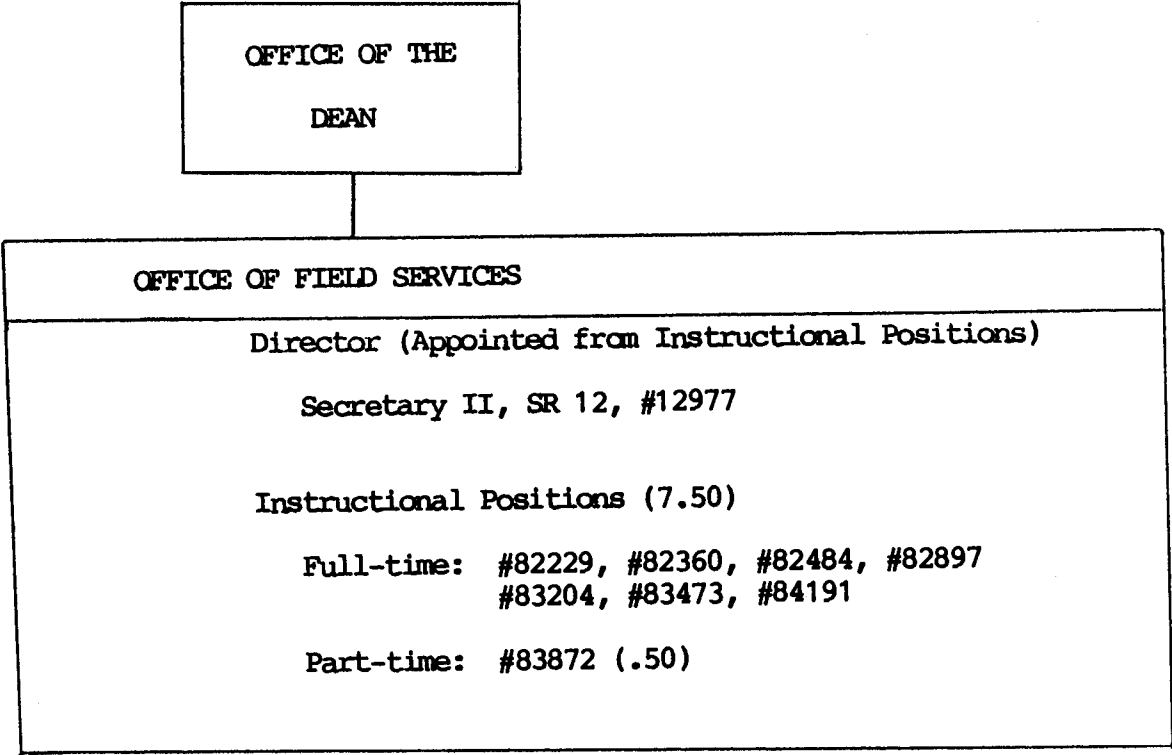


CHART UPDATED
DATE JUN 30 1989

STATE OF HAWAII
UNIVERSITY OF HAWAII AT MANOA
COLLEGE OF EDUCATION
CURRICULUM RESEARCH
AND DEVELOPMENT GROUP

Position Organization Chart

Chart XII

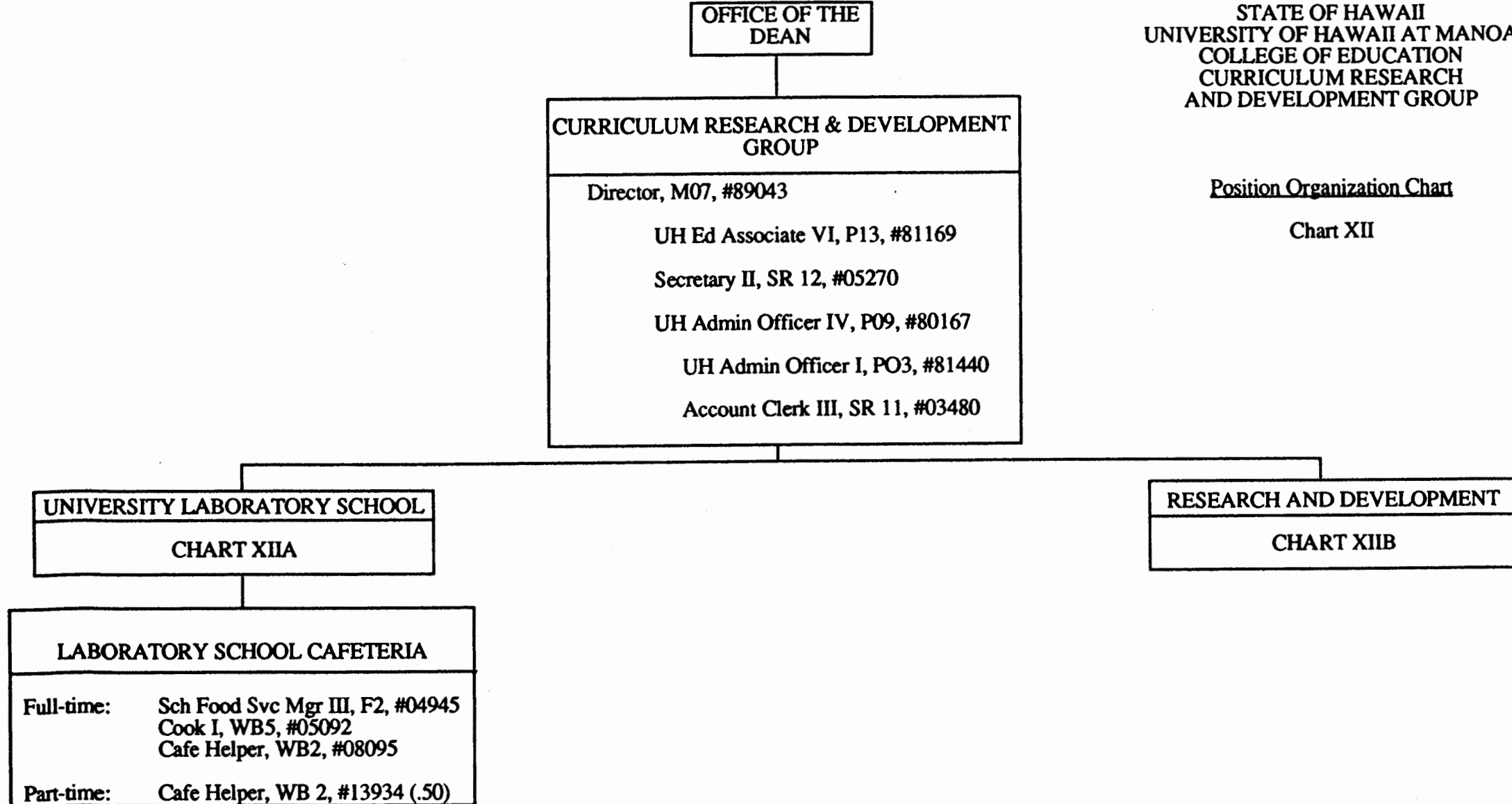
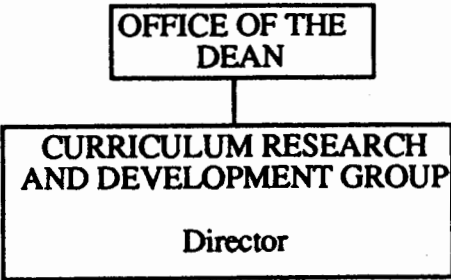


CHART UPDATED

DATE JUN 30 1989

STATE OF HAWAII
UNIVERSITY OF HAWAII AT MANOA
COLLEGE OF EDUCATION
CURRICULUM RESEARCH
AND DEVELOPMENT GROUP



Position Organization Chart

Chart XIIA

UNIVERSITY LABORATORY SCHOOL

Admintr-Univ Lab Sch & Prof, M05, #89257 (.90)

Secretary II, SR 12, #00783
Clerk-Typist II, SR 08, #36690

Instructional Positions (1.00)

Part-time: Assoc Prof, #82154 (.20); #83227 (.05), #84608 (.10)
Asst Prof, #82160 (.15), #82793 (.20), #84377 (.30)

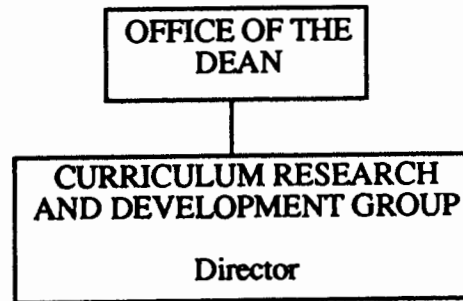
Administrative, Professional, Technical Positions (13.85)

Full-time: UH Ed Assoc V, P11, #80480

Part-time: UH Ed Assoc VI, P13, #80435 (.15), #80470 (.20)
UH Ed Assoc V, P11, #80466 (.25), #80468 (.15)
UH Ed Assoc IV, P09, #81170 (.75), #80433 (.85), #80484 (.90), #80917 (.15), #80418 (.15), #80474 (.30), #80993 (.80),
#80472 (.50), #80482 (.40)
UH Ed Assoc III, P07, #80420 (.50), #80491 (.80), #80434 (.75), #80483 (.30), #80485 (.50)
UH Ed Assoc II, P05, #80849 (.80), #80465 (.80), #80481 (.90), #80494 (.90)
UH Ed Assoc I, P03, #80464 (.80), #81811 (.25)

CHART UPDATED

DATE JUN 30 1989



STATE OF HAWAII
UNIVERSITY OF HAWAII AT MANOA
COLLEGE OF EDUCATION
CURRICULUM RESEARCH
AND DEVELOPMENT GROUP

Position Organization Chart

Chart XIIB

RESEARCH AND DEVELOPMENT

Instructional Positions (12.60)

Full-time: Professor, #84031, #83951, #82272
Asst Prof, #82387, #84077, #83380, #82950

Part-time: Admintr-Univ Lab Sch & Prof, M05, #89257 (.10)
Professor, #82141M (.50)
Assoc Prof, #83227 (.95), #82154 (.80), #84608 (.90)
Asst Prof, #82793 (.80), #84377 (.70), #82160 (.85)

Administrative, Professional, Technical Positions (15.90)

Full-time: UH Ed Assoc VI, P13, #80486, #80495, #80443
UH Ed Assoc V, P11, #80440
UH Ed Assoc III, P07, #80228, #80476

Part-time: UH Ed Assoc VI, P13, #80470 (.80), #80435 (.85)
UH Ed Assoc V, P11, #80468 (.85), #80466 (.75)
UH Ed Assoc IV, P09, #80484 (.10), #80917 (.85), #80993 (.20), #80474 (.70),
#80418 (.85), #80472 (.50), #80433 (.15), #80482 (.60)
UH Ed Assoc III, P07, #80420 (.50), #80491 (.20), #80483 (.70), #80485 (.50)
UH Ed Assoc II, P05, #80465 (.20), #80849 (.20), #80481 (.10), #80494 (.10)
UH Ed Assoc I, P03, #80464 (.20)

Clerk-Typist III, SR 10, #35206

CHART UPDATED
DATE JUN 30 1989