

Office of the
Chancellor

State of Hawaii
University of Hawaii
Kapiolani Community College

Position Organization Chart
Chart I

Office of the
Provost
Chart II

Student
Services
Chart IV

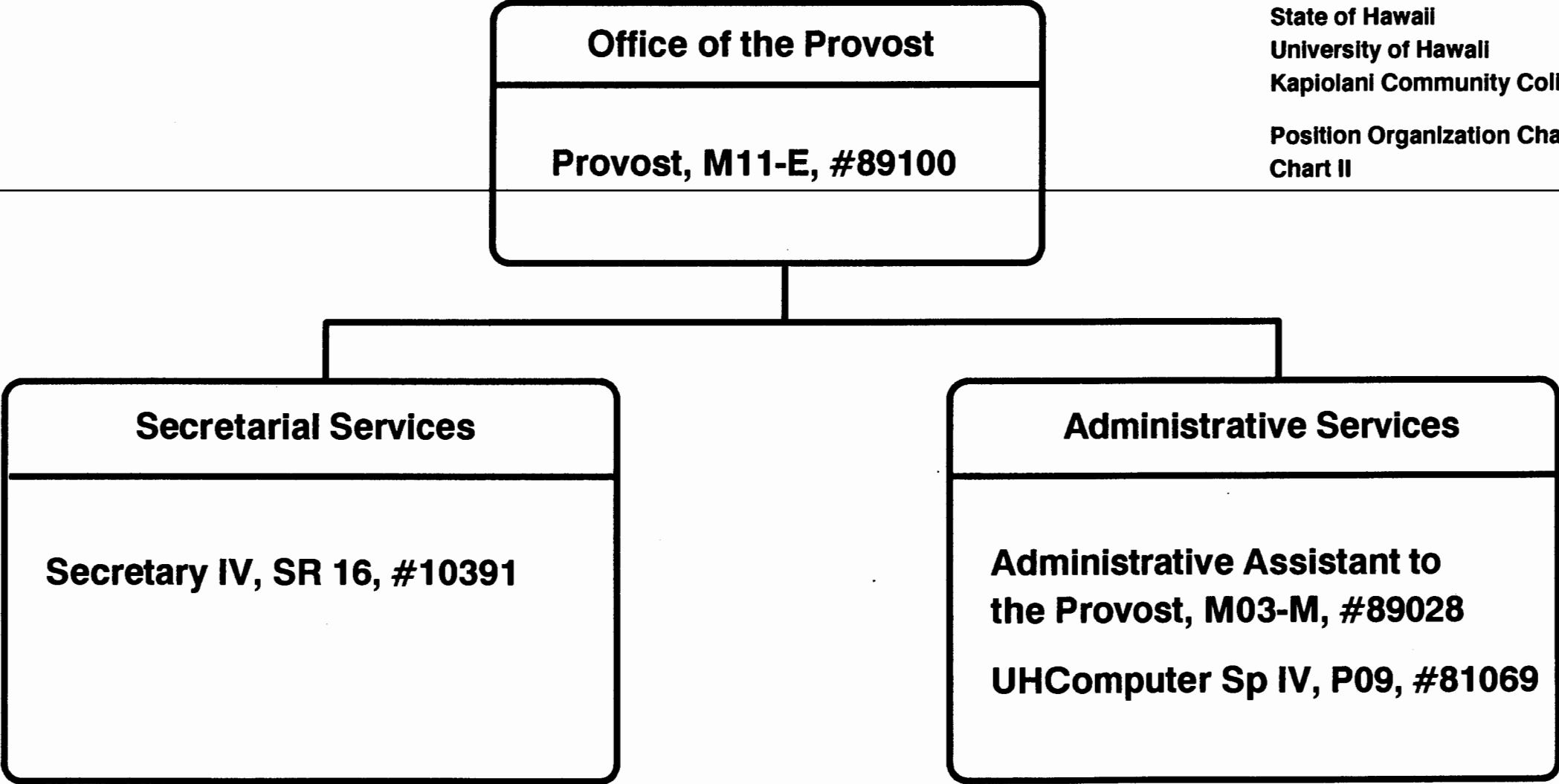
Instruction
Chart III

Administrative
Services
Chart V

Community
Services
Chart VI

Chart Updated
Date JUNE 30, 1990

CHART UPDATED
DATE JUN 30 1990

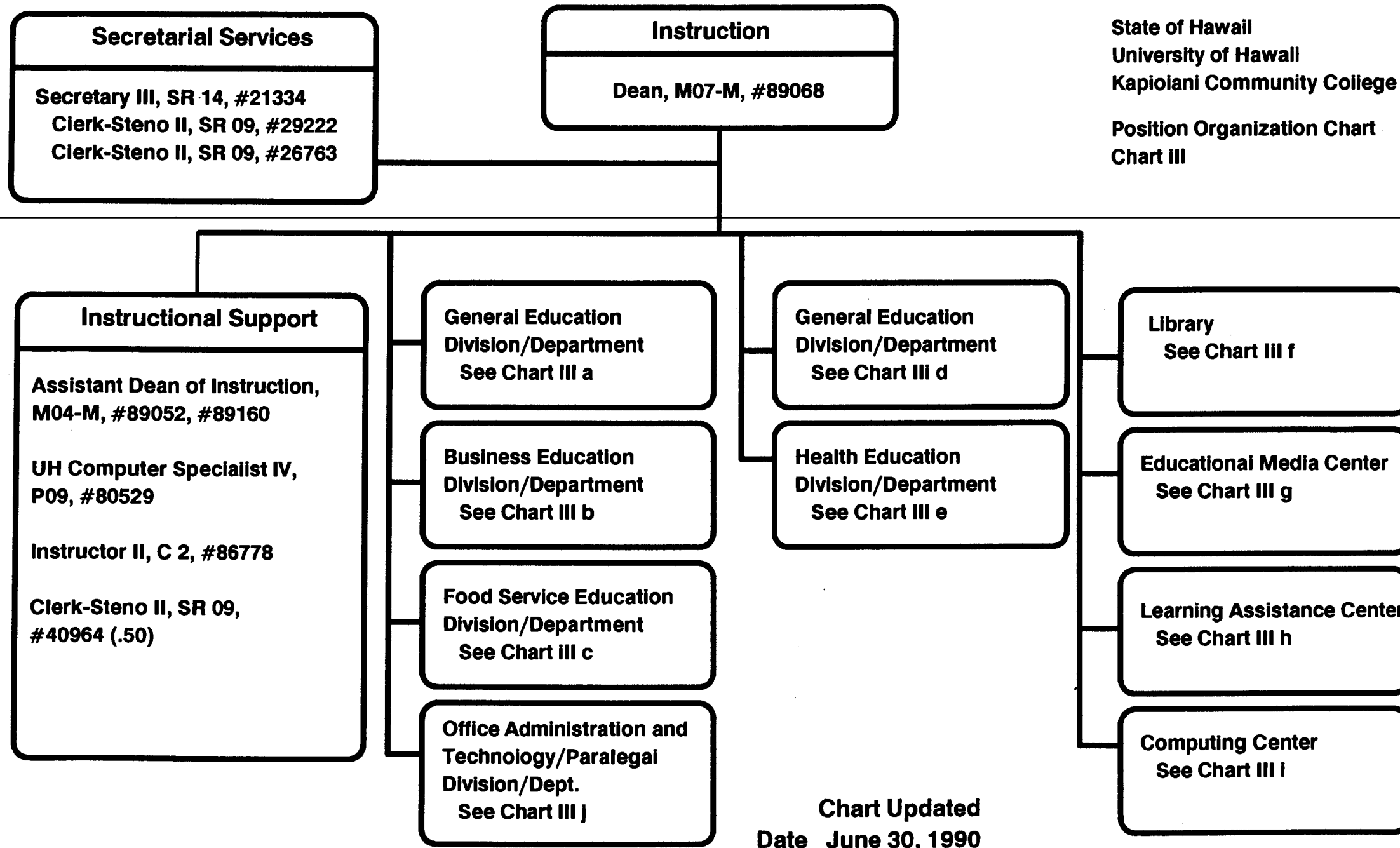


State of Hawaii
University of Hawaii
Kapiolani Community College

Position Organization Chart
Chart II

Chart Updated
Date June 30, 1990

CHART UPDATED
DATE JUN 30 1990



State of Hawaii
University of Hawaii
Kapiolani Community College

Position Organization Chart
Chart III

Chart Updated
Date June 30, 1990

CHART UPDATED
DATE JUN 30 1990

General Education Division/Department

General Education

Social Science

Chairperson, # _____ *

Instructors _____ Total (11.00)

Full-time: #83745, #84972, #84973, #83642 #82152, #82706,
#82935, #83492, #82560, #87403, #86599

Language Arts

Chairperson, # _____ *

Instructors _____ Total (20.50)

Full-time: #83559, #82178, #83783, #83903, #82232, #82555,
#82776, #83308, #83447, #83870, #84327, #84409,
#83795, #83123, #86596, #86594, #86595, #86604
#86798, #86803

Part-time: #86799 (.50)

General Education, Clerical Staff**

Secretary II, SR 12, #22313

Clerk-Typist II, SR08, #26658, #22310, #42059

State of Hawaii
University of Hawaii
Kapiolani Community College
Instruction

Position Organization Chart
Chart III a

Chart Updated

Date June 30, 1990

*Chairperson is appointed from among instructional positions within department.

**Secretarial and Clerical staff serves all four General Education Departments—Social Science,
Language Arts, Mathematics/Science, and Humanities.

CHART UPDATED

DATE JUN 30 1990

Business Education Division/Department

Business Education

Accounting/Data Processing

Chairperson, # _____ *

Instructors

Total (12.00)

Full-time: #82026, #82066, #82728, #82931, #82795, #83221,
#84337, #82503, #84882, #83901, #86591, #86598

Business Administration

Chairperson, # _____ *

Instructors

Total (7.00)

Full-time: #82031, #82218, #82231, #82429, #82389, #84150,
#84369

Business Education, Clerical Staff

Secretary II, SR 12, #22312

*Chairperson is appointed from among instructional positions within department.

State of Hawaii
University of Hawaii
Kapiolani Community College
Instruction

Position Organization Chart
Chart III b

Chart Updated
Date June 30, 1990

CHART UPDATED
DATE JUN 30 1990

**Food Service and Hospitality Education
Division/Department**

Food Service and Hospitality Education

Chairperson, # _____ *

Instructors Total (15.00)

**Full-time: #82540, #82970, #83225, #83460, #83684, #84091,
#84103, #84304, #84539, #82683, #82467, #83133,
#86597, #86670, #86719**

UH Educational & Academic Support Sp, P01, #81420 (w), #81422 (w)

Food Service, Clerical Staff

Secretary II, SR 12, #16962

Cook III, WB 08, #22318 (w)

Snack Bar Cashier, SR 06, #22319 (w)

Clerk-Typist II, SR 08, #29010 (w)

Cafeteria Helper, WB 02, #32863 (w)

***Chairperson is appointed from among instructional positions within department.
(w) Represents positions funded by the Food Service Revolving Fund.**

**State of Hawaii
University of Hawaii
Kapiolani Community College
Instruction**

**Position Organization Chart
Chart III c**

**Chart Updated
Date June 30, 1990**

**CHART UPDATED
DATE JUN 30 1990**

General Education Division/Department

General Education

Mathematics/Science

Chairperson, # _____ *

Instructors Total (19.50)

Full-time: #82492, #82981, #83974, #84458, #82394, #83096,
#83262, #83688, #83733, #83357, #83939, #87401,
#82910, #86600, #86592, #86593, #86606, #86754,
#86718

Part-time: #86757 (.50)

Humanities

Chairperson, # _____ *

Instructors Total (13.00)

Full-time: #84971, #83094, #82631, #82925, #83809, #84974,
#82607, #84470, #82052, #82983, #87402, #87404,
#86602

State of Hawaii
University of Hawaii
Kapiolani Community College
Instruction

Position Organization Chart
Chart III d

* Chairperson is appointed from among instructional positions within department.

Chart Updated
Date June 30, 1990

CHART UPDATED
DATE JUN 30 1990

Health Education Division/Department

Health Education

Allied Health

Chairperson, # _____ *

Instructors Total (11.10)

Full-time: #84326, #83310, #83667, #82121, #82405, #82576,
#83321, #82162, #85821, #86385, #86384

Part-time: #87052 (.10)

Nursing

Chairperson, # _____ *

Instructors Total (23.50)

Full-time: #82064, #82513, #84487, #84629, #84655, #82244,
#86774, #86777, #86776, #86752, #86751, #86750,
#86749, #86747, #86737, #86738, #86746, #86743,
#86742, #86741, #86740, #86739

Part-time: #84308 (.50), #84308A (.50), #86736 (.50)

Health Education, Clerical Staff

Secretary II, SR 12, #18093

Clerk-Steno II, SR 09, #32952, #42015

State of Hawaii
University of Hawaii
Kapiolani Community College
Instruction

Position Organization Chart
Chart III e

*Chairperson is appointed from among instructional positions within department.

Chart Updated
Date June 30, 1990

CHART UPDATED
DATE JUN 30 1990

Library

Unit Head _____ *

Instructor III (Librarian), #84185, #84438, #83504, #86629
Instructor II (Librarian), #86724

Library Tech V, SR 11, #39859, #39796

Library Assistant IV, SR 09, #18087, #22311, #26762, #42087

State of Hawaii
University of Hawaii
Kapiolani Community College
Instruction

Position Organization Chart
Chart III f

Chart Updated

Date June 30, 1990

*Unit Head/Chairperson is appointed from among instructional positions within the unit/department.

CHART UPDATED
DATE JUN 30 1990

Educational Media Center

Unit Head/Chairperson, # _____ *

Instructor V, #82386, #87603

UH Electronic Engineer I, P12, #81581
UH Computer Specialist II, P05, #81654

UH Electronic Technician II, P09, #80034
UH Electronic Technician I, P06, #81277

UH Educational Specialist II (Media), P06, #80694

UH Graphic Artist II, P05, #81060
Offset Press Operator II, WB08, #39797

Clerk-Steno III, SR 11, #21321

*Unit Head/Chairperson is appointed from among instructional positions within unit/department.

State of Hawaii
University of Hawaii
Kapiolani Community College
Instruction

Position Organization Chart
Chart III g

Chart Updated
Date June 30, 1990

CHART UPDATED
DATE JUN 30 1990

Learning Assistance Center

Unit Head/Chairperson, # _____ *

Instructor II, C2, #86758

UH Educational Specialist II, P06, #81163 (.50)

Clerk-Typist II, SR 08, #14214

State of Hawaii
University of Hawaii
Kapiolani Community College
Instruction

Position Organization Chart
Chart III h

*Unit Head/Chairperson is appointed from among instructional positions at the College.

Chart Updated
Date June 30, 1990

CHART UPDATED
DATE JUN 30 1990

Computing Center

UH Educational Specialist II, P06, #81384

State of Hawaii
University of Hawaii
Kapiolani Community College
Instruction

Position Organization Chart
Chart III I

Chart Updated
Date June 30, 1990

CHART UPDATED
DATE JUN 30 1990

**Office Administration and Technology
and Paralegal Division/Department**

Office Administration and Technology/Paralegal Education

Office Administration and Technology Programs

Chairperson, # _____ *

Instructors _____ Total (9.00)

**Full-time: #82348, #82380, #82876, #83071, #83734, #83771,
#84072, #84223, #84370**

Paralegal Program

Chairperson, # _____ *

Instructors _____ Total (1.00)

Full-time: #83360

**Office Administration and Technology/Paralegal Education,
Clerical Staff**

Clerk-Typist II, SR 08, #18092

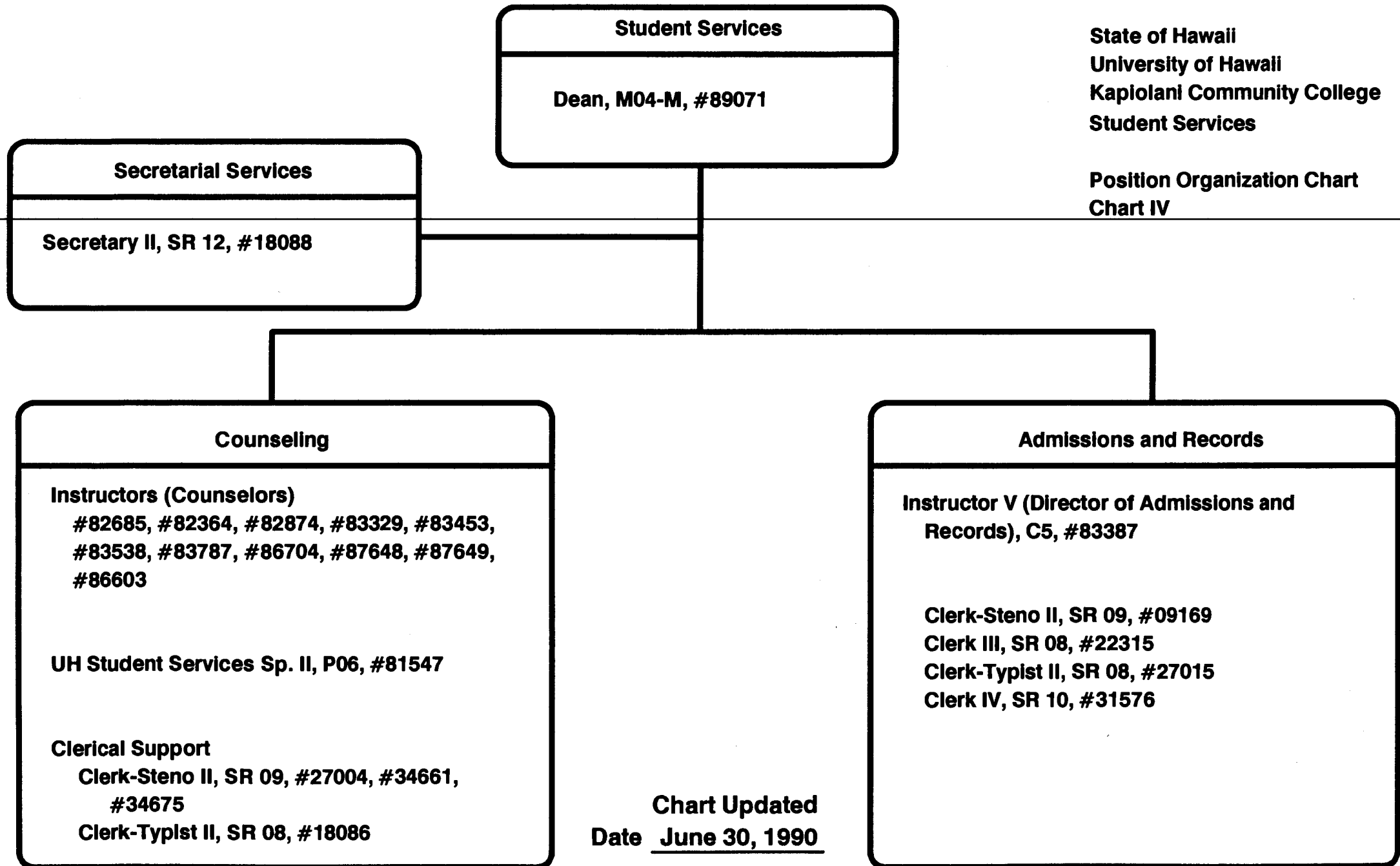
***Chairperson is appointed from among instructional positions within department.**

**State of Hawaii
University of Hawaii
Kaplan Community College
Instruction**

**Position Organization Chart
Chart III J**

**Chart Updated
Date June 30, 1990**

**CHART UPDATED
DATE JUN 30 1990**



State of Hawaii
University of Hawaii
Kapiolani Community College
Student Services

Position Organization Chart
Chart IV

Chart Updated
Date June 30, 1990

Pending Establishment: Clerk Typist II, #90153F, #90154F, Clerk Steno III, #90155F, UH Ed Sp I, #90724F

CHART UPDATED
DATE JUN 30 1990

State of Hawaii
University of Hawaii
Kapiolani Community College
Administrative Services

Position Organization Chart
Chart V

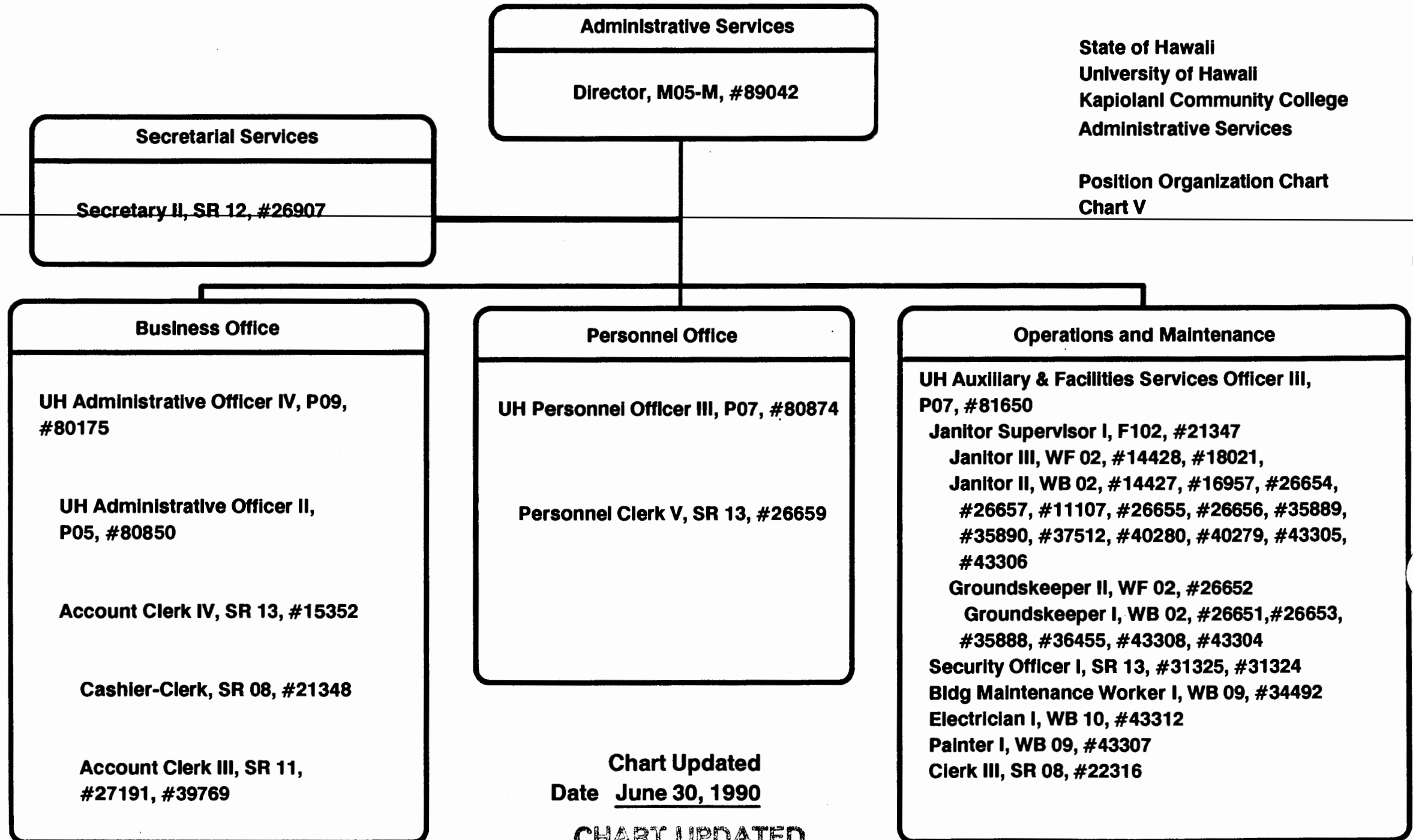
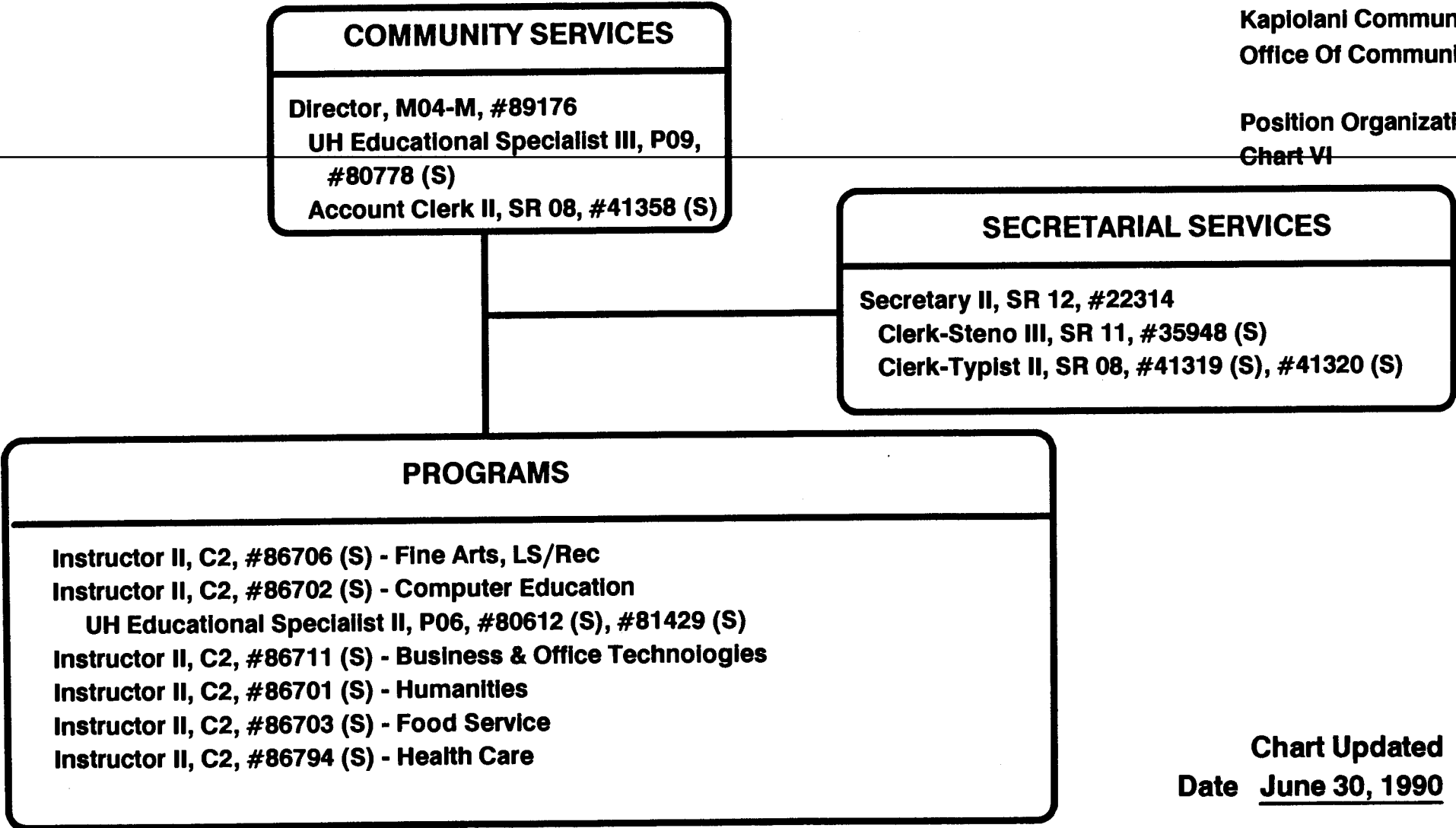


Chart Updated
Date June 30, 1990

CHART UPDATED
JUN 30 1990
DATE _____



(S) Represent positions funded by the Community Services Special Fund

Chart Updated
Date June 30, 1990

CHART UPDATED
DATE JUN 30 1990