

STATE OF HAWAII
UNIVERSITY OF HAWAII
LEEWARD COMMUNITY COLLEGE
ORGANIZATION CHART
CHART I

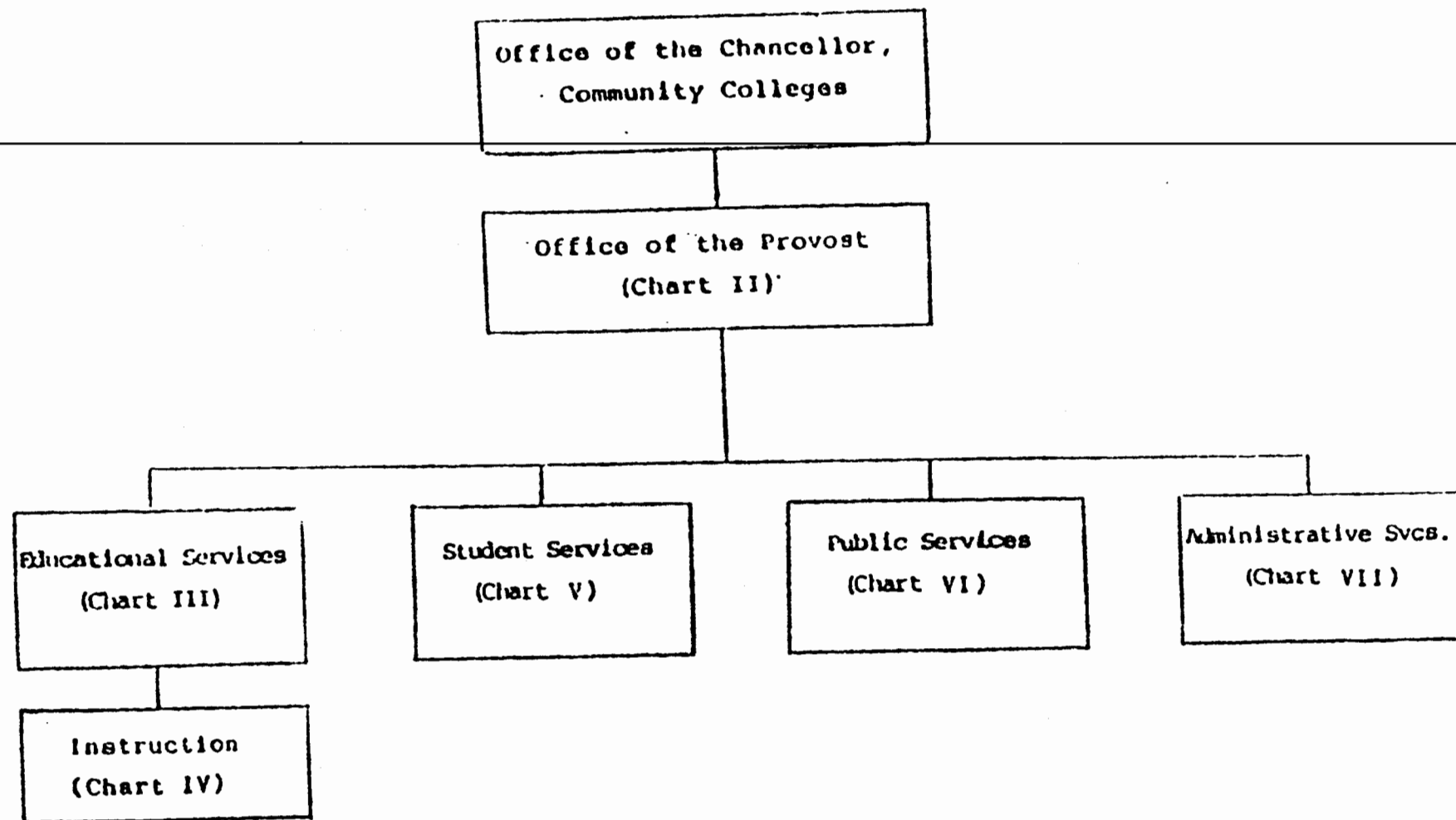


CHART UPDATED
DATE JUN 30 1990

STATE OF HAWAII
UNIVERSITY OF HAWAII
LEEWARD COMMUNITY COLLEGE
OFFICE OF THE PROVOST

Position Organization Chart 06/30/90

Chart II

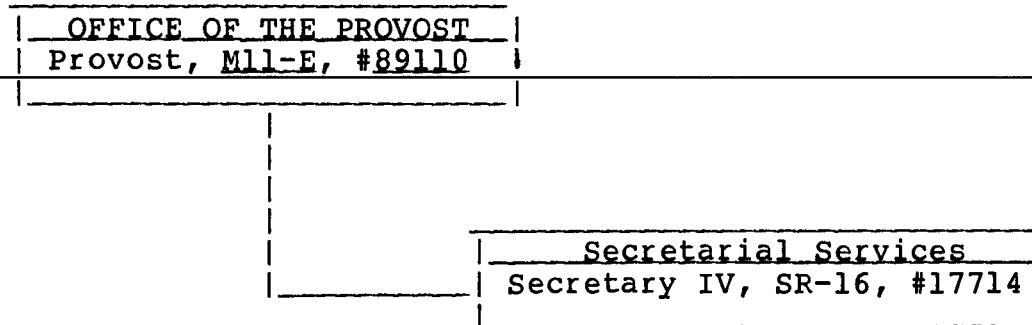


CHART UPDATED
DATE JUN 30 1990

STATE OF HAWAII
UNIVERSITY OF HAWAII
LEEWARD COMMUNITY COLLEGE

EDUCATIONAL SERVICES

Position Organization Chart

06/30/90

Chart III

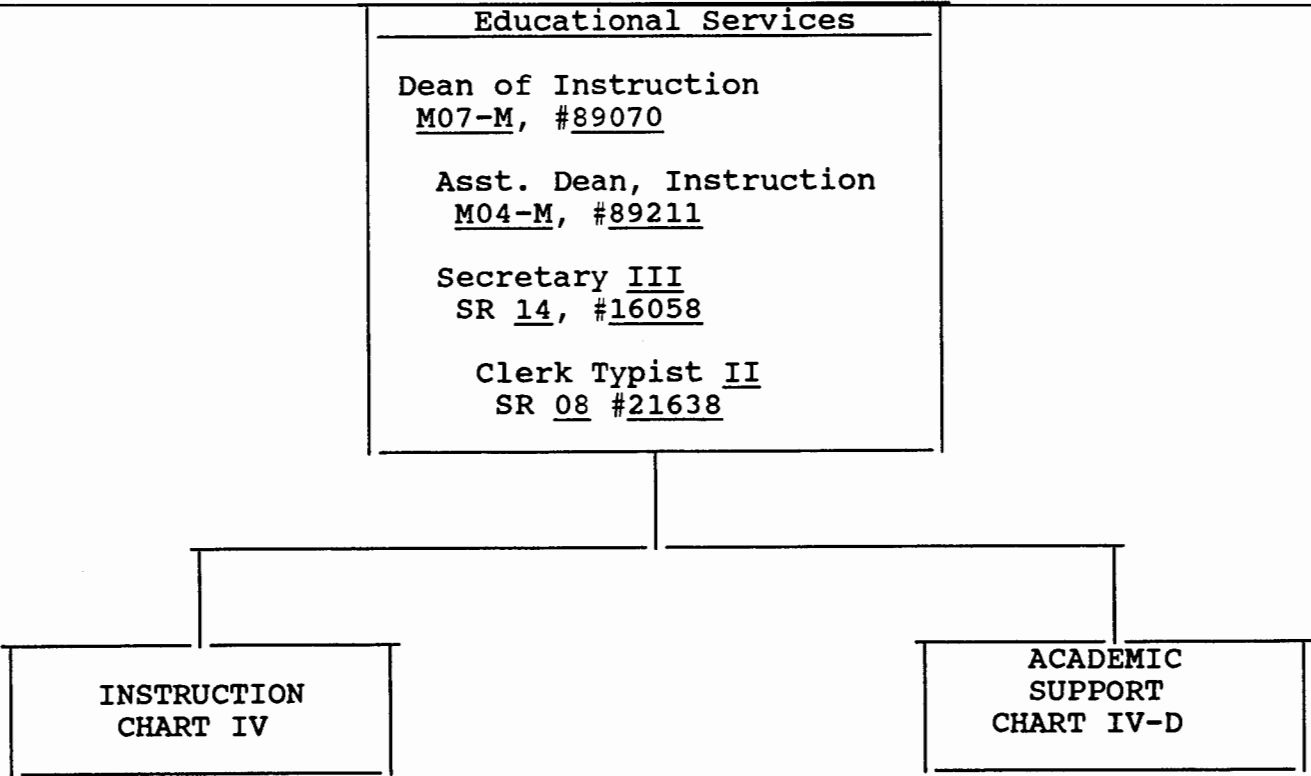


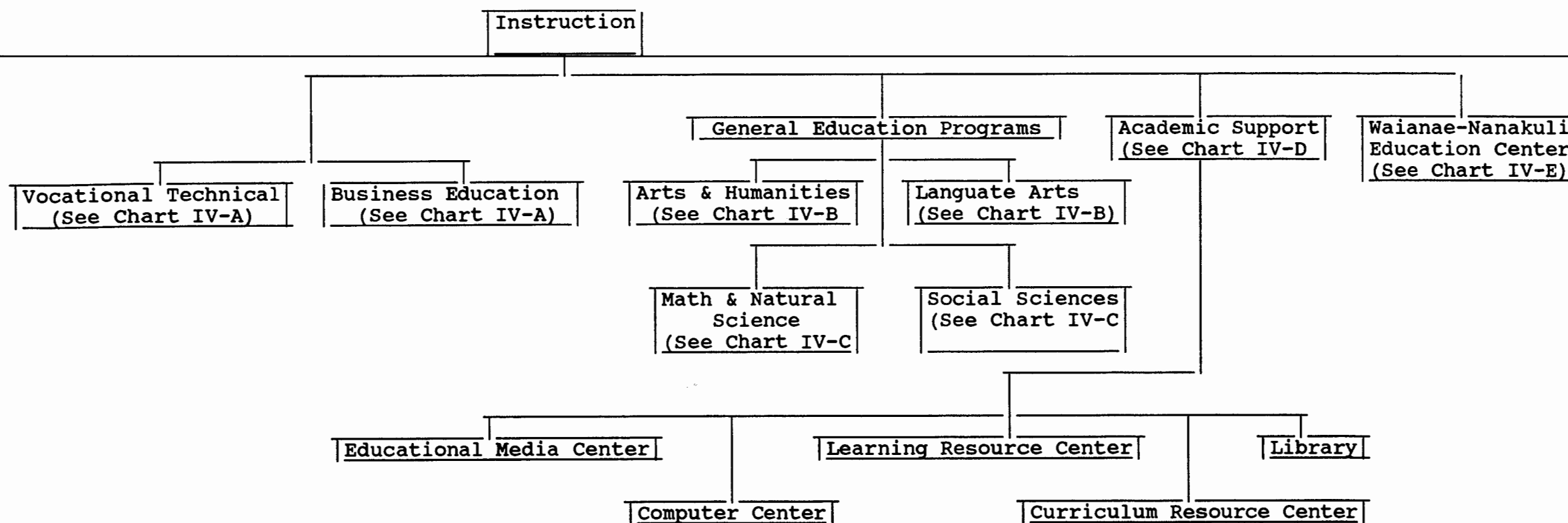
CHART UPDATED

DATE JUN 30 1990

STATE OF HAWAII
UNIVERSITY OF HAWAII
LEEWARD COMMUNITY COLLEGE

ACADEMIC SUPPORT

Position Organization Chart 06/30/90
Chart IV



1/15/91 For many personnel programs
existing does not change in the chart
This will be revised in next annual update.
Also they want to change the title
Business Education to Business
Advised them not to do it in the chart.
Same for Gen. Ed. Programs.

CHART UPDATED
JUN 30 1990
DATE _____

STATE OF HAWAII
UNIVERSITY OF HAWAII
LEEWARD COMMUNITY COLLEGE

INSTRUCTION
Dean of Instruction (CC) M07-M, #89070

INSTRUCTION

Position Organization Chart 06/30/90

Chart IV-A

Vocational Technical
Chairperson*
Secretary II, SR-12, #22698
Instructors Total (16.50)
Health, Phys. Ed. & Rec.
Full-time: #82731
Food Service
Full-time: #83669, #83145, #84266 #86583, #84779
Commercial Arts
Full-time: #82697, #83714
Auto Mechanics Tech
Full-time: #82495, #84314, #83835 #84885, #82953
Drafting Technology
Full-time: #82721, #83309 #82530 (.5)
TV Production
Full-time: #86654
Classified
Cook I, WB-05, #27088 (R)

Business Education
Chairperson*
Secretary II, SR-12, #17713
Instructors Total (19.90)
Accounting
Full-time: #84275, #82000, #82707 #83865, #82461, #84621
Business
Full-time: #84589, #82326, #84157 Part-time: #84780 (.4), #82116 (.5)
Sales and Management
Full-time: #83374, #83140 Part-time: #84780 (.6)
Ofc. Admin. & Tech
Full-time: #82264, #83064, #83829 #83983, #82400, #82489 #83103
Human Services
Part-time: #83759 (.4)

*Rotating Position

CHART UPDATED

DATE JUN 30 1990

STATE OF HAWAII
UNIVERSITY OF HAWAII
LEEWARD COMMUNITY COLLEGE

General Education Programs

GENERAL EDUCATION PROGRAMS

Position Organization Charts 06/30/90

CHART IV-B

Math & Natural Sciences
Chart IV-C

Social Sciences
See Chart IV-C

CHART UPDATED

DATE JUN 30 1990

Arts & Humanities

Chairperson*

Secretary II, SR-12, #17711

Instructors Total (23.10)

Art

Full-time: #82890, #82247, #82502, #84086

Music

Full-time: #82239, #84426, #84014

Part-time: #83636 (.5), #82116A (.5)

Dance

Part-time: #83636 (.5)

Drama & Theatre

Full-time: #83105

Part-time: #83181 (.5)

Philosophy

Full-time: #82941, #83907

Religion

Full-time: #83808

Part-time: #82021 (.6)

History

Full-time: #84018, #84026, #82581, #82306,
#83474, #83887

Part-time: #84104 (.8)

Humanities

Full-time: #82427, #86688

Part-time: #83181 (.5), #84104 (.2)

Language Arts

Chairperson*

Secretary II, SR-12, #17710

Instructors Total (35.0)

English

Full-time: #82960, #83945, #84027, #83850, #84181
#84602, #84653, #84883, #83472, #83570
#83605, #83697, #82129, #82409, #82498
#82570, #82932, #86399, #83210, #86789
#86790, #86791

Part-time: #83607 (.75), #84098 (.4), #84490 (.4)

Asian Pacific Languages

Full-time: #82692, #83442, #82888

Part-time: #84098 (.6)

Journalism

Part-time: #84490 (.6)

European Language

Full-time: #82165, #82645, #82872

Part-time: #83607 (.25)

English as a Second Language

Full-time: #84555

Speech

Full-time: #82496, #82273

Communication

Full-time: #84606

General Education Programs

STATE OF HAWAII
UNIVERSITY OF HAWAII
LEEWARD COMMUNITY COLLEGE

GENERAL EDUCATION PROGRAMS

Position Organization Chart

06/30/90

Arts & Humanities
See Chart IV-B

Language Arts
See Chart IV-B

Chart IV-C

Math & Sciences

Chairperson*
Secretary II, SR-12, #17712
Instructors Total (32.0)
Biological Science
Full-time: #82225, #84384, #84679,
Part-time: #84849 (.2)
Mathematics
Full-time: #82024, #82522, #84776, #82470, #83055, #82845
#84429, #82035, #84777, #83965, #86642**
#83479, #83180
Part-time: #83660 (.4)
Chemistry
Full-time: #83218, #82085, #82517
Part-time: #84160 (.8)
Oceanography
Full-time: #83248
Part-time: #84849 (.8), #83847 (.2)
Physical Science
Full-time: #82134, #82277, #82670, #82404
Part-time: #83847 (.8), #83660, (.6)
Science
Part-time: #84160 (.2)
Data Processing
Full-time: #82986, #83161, #84557, #84069

Social Sciences

Chairperson*
Secretary II, SR-12, #19604
Instructors Total (16.0)
Psychology
Full-time: #83104
Part-time: #82017 (.8), #82799 (.8)
#84466 (.8), #82691 (.6)
Anthropology
Full-time: #83464, #83615
Economics
Full-time: #83369, #83129
Part-time: #83759 (.6), #84441 (.6)
Geography
Full-time: #83466
Political Science
Full-time: #84634
Social Science
Part-time: #84358 (.2)
Sociology
Part-time: #84358 (.8), #82021 (.4), #84441 (.4),
#82543 (.6)
Human Development
Part-time: #82017 (.2), #82799 (.2)
Human Services
Full-time: #82029
Part-time: #82691 (.4), #82543 (.4), #84466 (.2)

*Rotating Position

**Administratively assigned to Waianae-Nanakuli Education Center

CHART UPDATED
JUN 30 1990
DATE

STATE OF HAWAII
UNIVERSITY OF HAWAII
LEEWARD COMMUNITY COLLEGE

ACADEMIC SUPPORT

Position Organization Chart

06/30/90

Chart IV-D

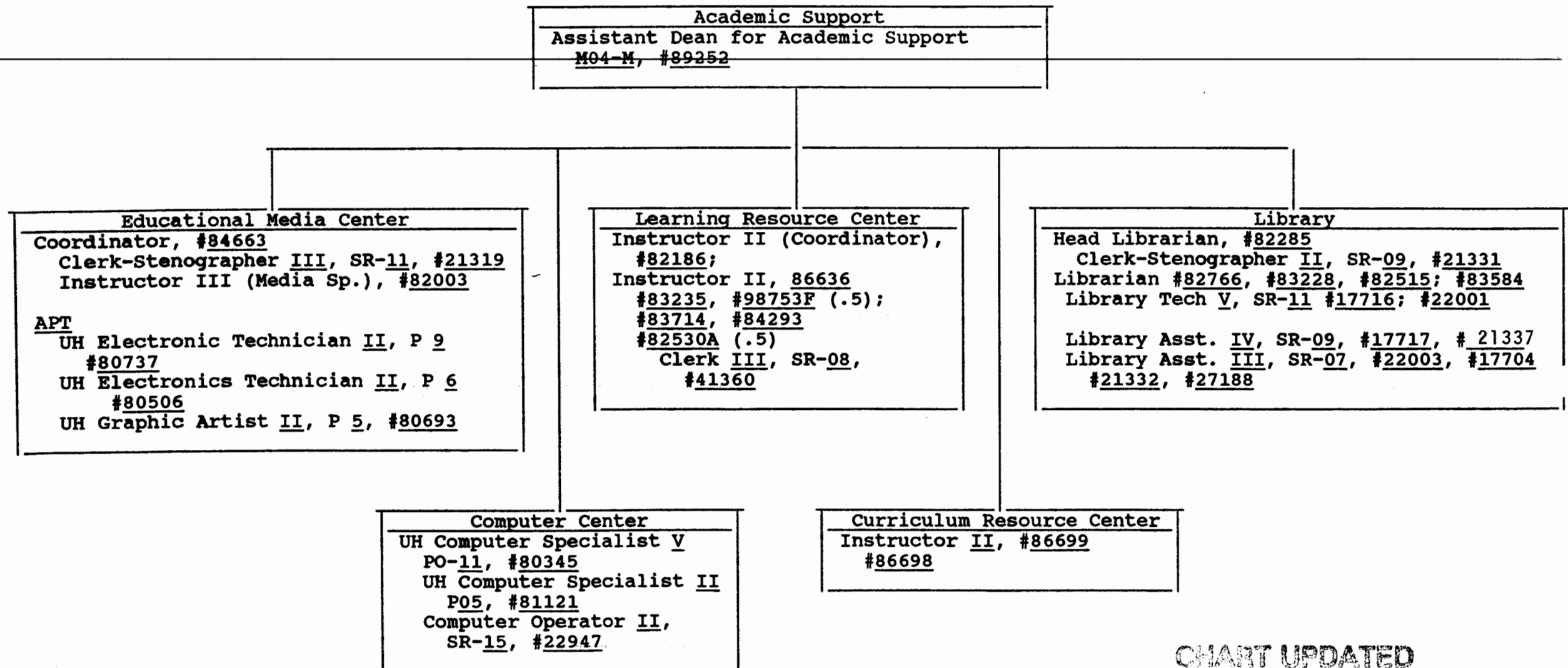


CHART UPDATED

DATE JUN 30 1990

STATE OF HAWAII
UNIVERSITY OF HAWAII
LEEWARD COMMUNITY COLLEGE

INSTRUCTION
Waianae-Nanakuli Instruction

Position Organization Chart 06/30/88

Chart IV-E

<u>Waianae-Nanakuli Education Center</u>
Coordinator* (1.0)
Clerk Steno II, SR 09, #26797, (1.0)
Educ. Spec. I, P 03, #81032, (1.0)
Instructors (2.0) #

*Rotating faculty position; administratively assigned

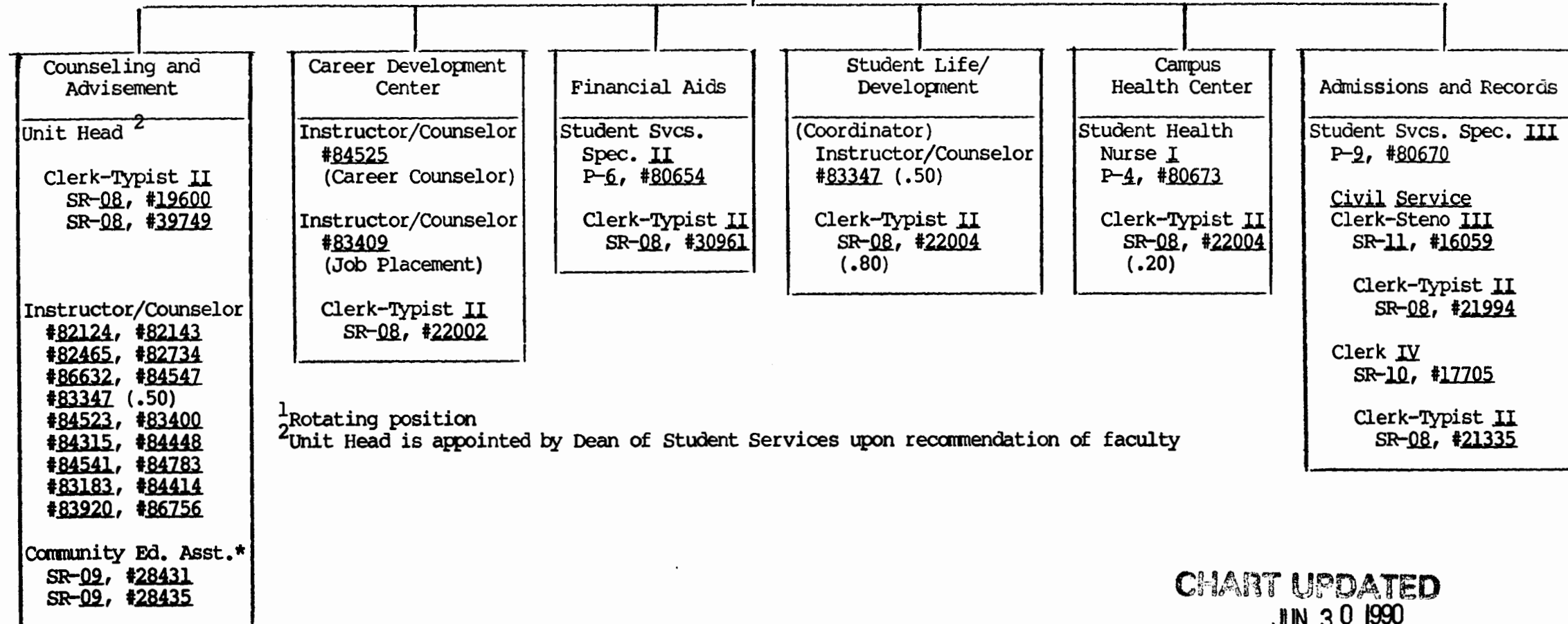
#Rotating faculty positions from divisions

CHART UPDATED
JUN 30 1990
DATE _____

State of Hawaii
University of Hawaii
Leeward Community College

Student Services
Position Organization Chart 06/30/90
Chart V

Student Services
Dean of Student Services M04-M, #89004
Secretary II SR-12, #22948
Coordinator of Student Services ¹



¹Rotating position

²Unit Head is appointed by Dean of Student Services upon recommendation of faculty

CHART UPDATED
JUN 30 1990
DATE _____

*Assigned to Waianae-Nanakuli Education Center

STATE OF HAWAII
UNIVERSITY OF HAWAII
LEEWARD COMMUNITY COLLEGE
EDUCATIONAL SERVICES

Position Organization Chart

06/30/90

Chart VI

Public Services
Director of Special Programs and Community Services
M04-M, #89151

Secretary II
SR-12, #21639

UH Ed. Sp. II
P 6, #80462 (.5)

Theatre Events

UH Theatre Manager
P 6, #80118
Clerk II
SR-06,
#90200F

UH Theatre Tech.
P 7, #80701
UH Theatre Tech
P7, #90755F
.50

CHART UPDATED

DATE JUN 30 1990

STATE OF HAWAII
UNIVERSITY OF HAWAII
LEEWARD COMMUNITY COLLEGE

ADMINISTRATIVE SERVICES

Position Organization Chart

06/30/90

Chart VII

Secretary II
SR-12, #21992

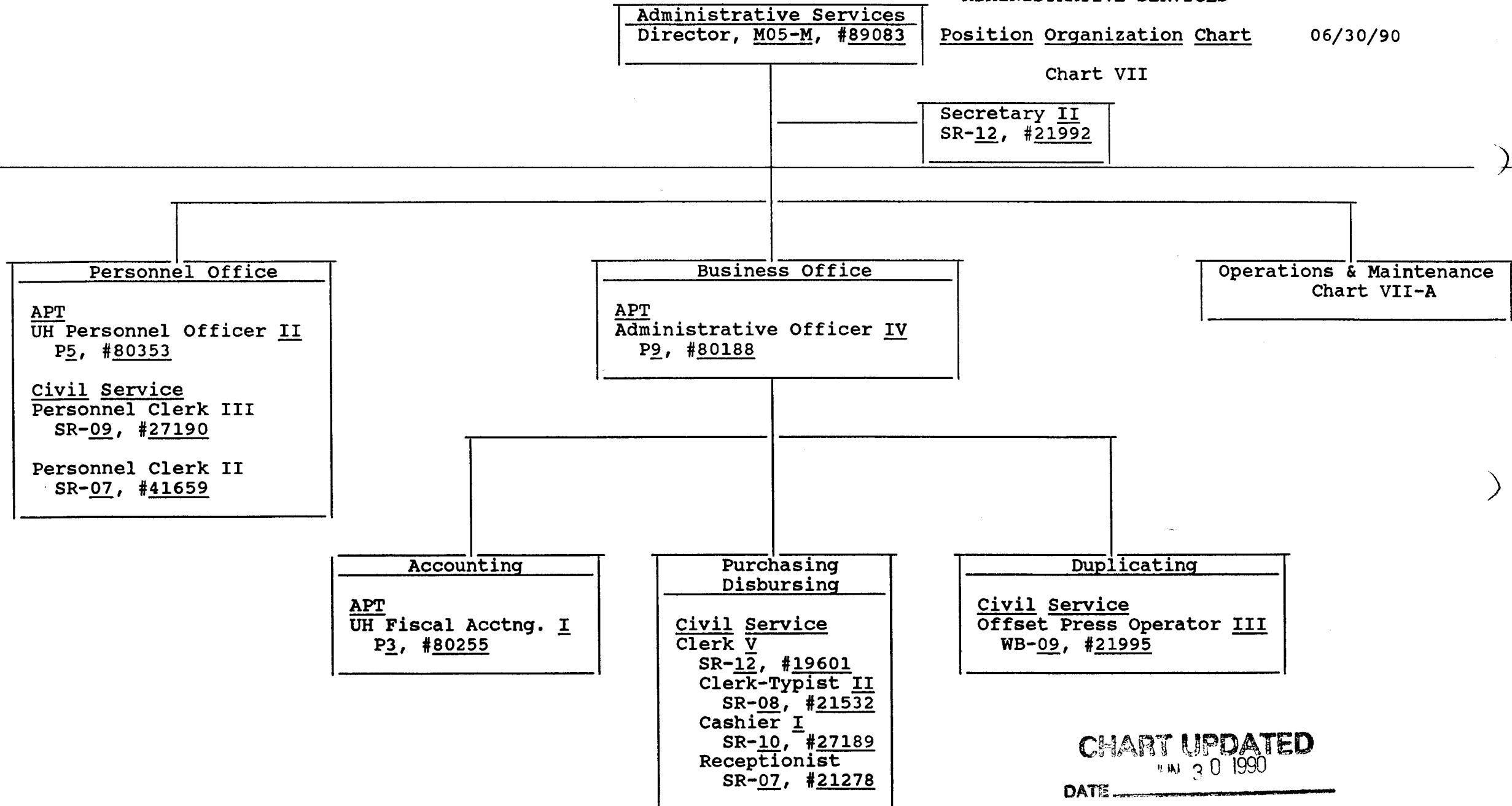


CHART UPDATED

30 1990

DATE _____

Administrative Services

Operations & Maintenance

Clerical Support
Clerk IV
SR-10, #19605

STATE OF HAWAII
UNIVERSITY OF HAWAII
LEEWARD COMMUNITY COLLEGE
OPERATIONS & MAINTENANCE

Position Organization Chart 06/30/90

Chart VII-A

Maintenance & Grounds
Bldg & Grnds Sup II
F2-09, #21998

Maintenance

Bldg Maint
Worker II
WF1-09,
#21997
Bldg Maint
Worker I
WB-09
Total (2.0)
#21336
#17718
General
Lab. I
WB-02
Total (2.0)
#21991
#22000

Grounds

Grndskpr II
WF-02
#26752
Grndskpr I
WB-02
Total (3.0)
#17709
#21589
#21588

Equipment

Equip Oper I
WB-04, #21999

Custodial

Janitor Supervisor I
F1-02, #17706
Janitor II
Total (13.5)
WB-02 ~~13.5~~ 4.0
#19602, #19603
#23687, #23689
#23686, #24568
#27154, #27155
#17707, #17708
#28944, #23688
#31088, #90202F(.5)
#35235 (.5)*

Security

Security Guard II
SR-15, #26002
Security Guard I
Total (5.0)
SR-13 #17715
#21235
#25999
#26000
#25706

CHART UPDATED
JUN 30 1990

DATE _____

*Assigned to Waianae-Nanakuli Education Center