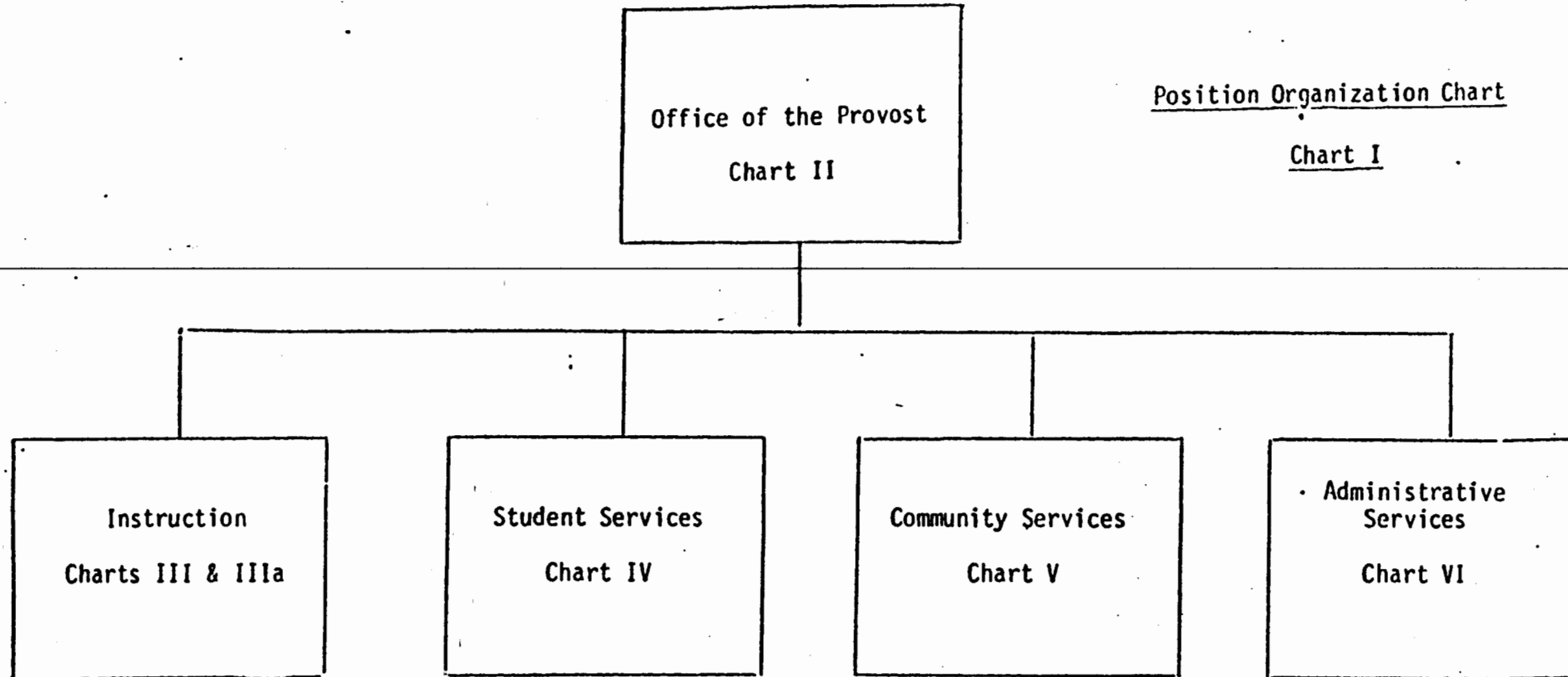


Position Organization Chart

Chart I



**CHART UPDATED**  
**JUN 30 1990**  
DATE \_\_\_\_\_

OFFICE OF THE PROVOST  
Position Organization Chart  
Chart II

Office of the Provost

Provost, M10-E #89044

Secretary III, SR14, #23571

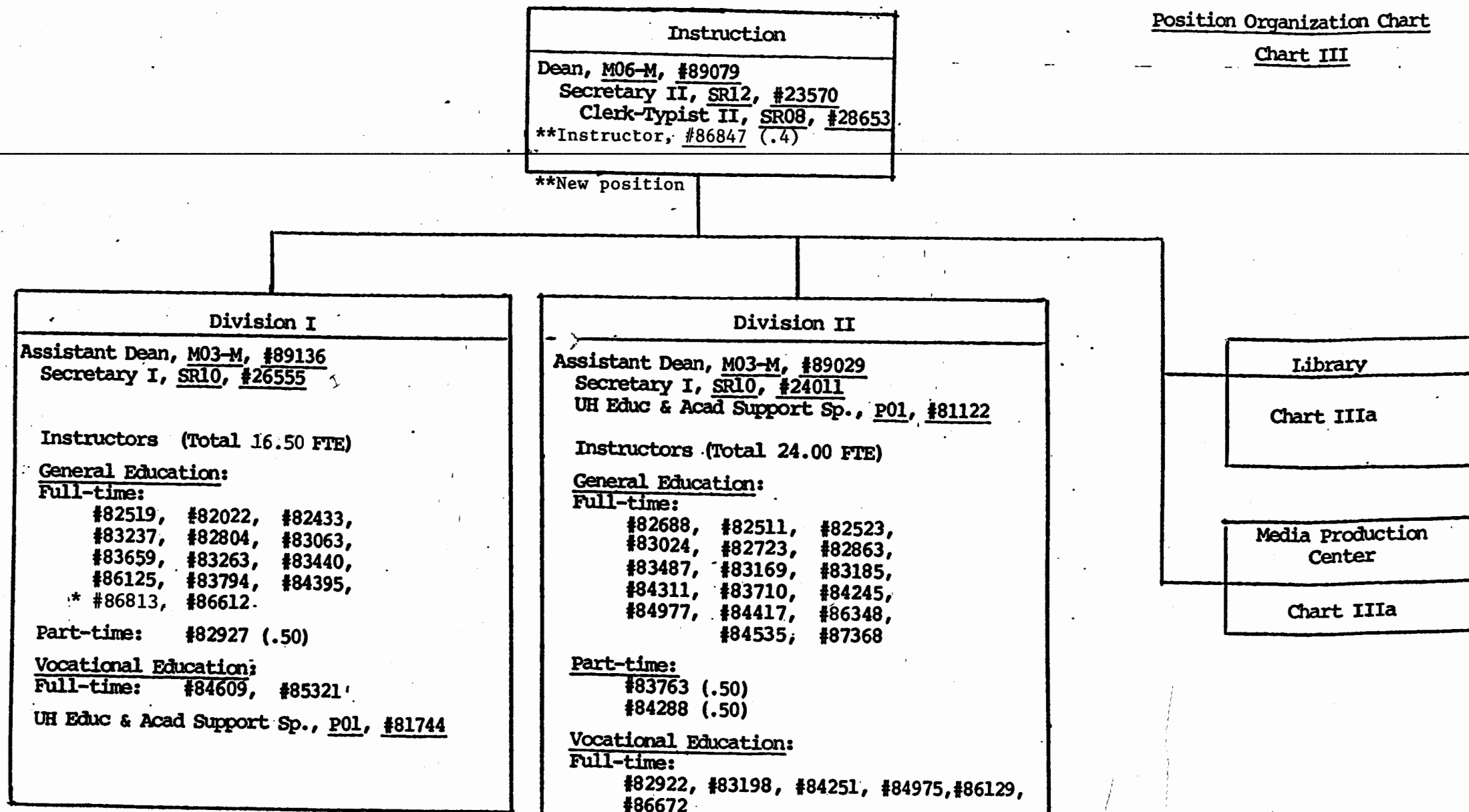
**CHART UPDATED**  
JUN 30 1990

DATE \_\_\_\_\_

STATE OF HAWAII  
UNIVERSITY OF HAWAII  
WINDWARD COMMUNITY COLLEGE  
INSTRUCTION

Position Organization Chart

Chart III



\* New position

**CHART UPDATED**

DATE JUN 30 1990

Instruction

Chart III

STATE OF HAWAII  
UNIVERSITY OF HAWAII  
WINDWARD COMMUNITY COLLEGE

INSTRUCTION

Position Organization Chart

Chart IIIa

Division I

Chart III

Division II

Chart III

Library

Instructor (Librarian), #84553  
#83873  
#86614  
Library Asst. IV, SR09, #25657  
Library Tech V, SR11, #23569  
\*Library Asst. IV, SR09, #32989

\*Reclassified effective 05/01/90

Media Production Center

UH Educational Spec. II, P06, #80553

UH Electronic Tech. I, P06, #81833  
Clerk-Typist III, SR10, #26606

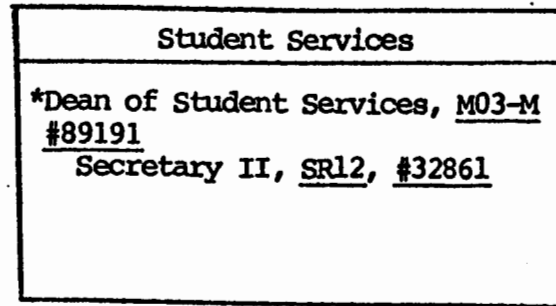
**CHART UPDATED**

DATE JUN 30 1990

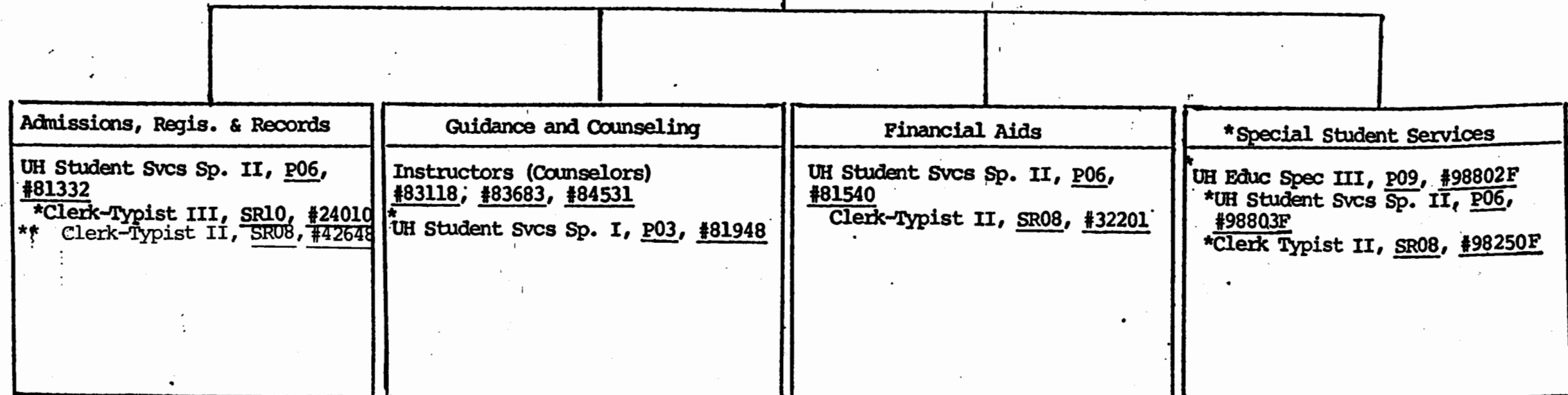
STATE OF HAWAII  
UNIVERSITY OF HAWAII  
WINDWARD COMMUNITY COLLEGE  
STUDENT SERVICES

Position Organization Chart

Chart IV



\*Title change eff. 9/5/86



\*Approved by DPS eff 10/1/88  
\*\*Approved by DPS eff 10/18/89

\*Converted fr Federal to G funds

\*Pending Establishment

Revised 7/90

**CHART UPDATED**

JUN 30 1990

DATE \_\_\_\_\_

UNIVERSITY OF HAWAII  
WINDWARD COMMUNITY COLLEGE  
COMMUNITY SERVICES  
Position Organization Chart  
Chart V

Community Services

Director of Spec. Prog. & Comm. Svcs.  
MO3-M, #89207

Secretary I, SR10, #31480  
Clerk-Typist II, SR08, #24395

Allocated positions to be established :

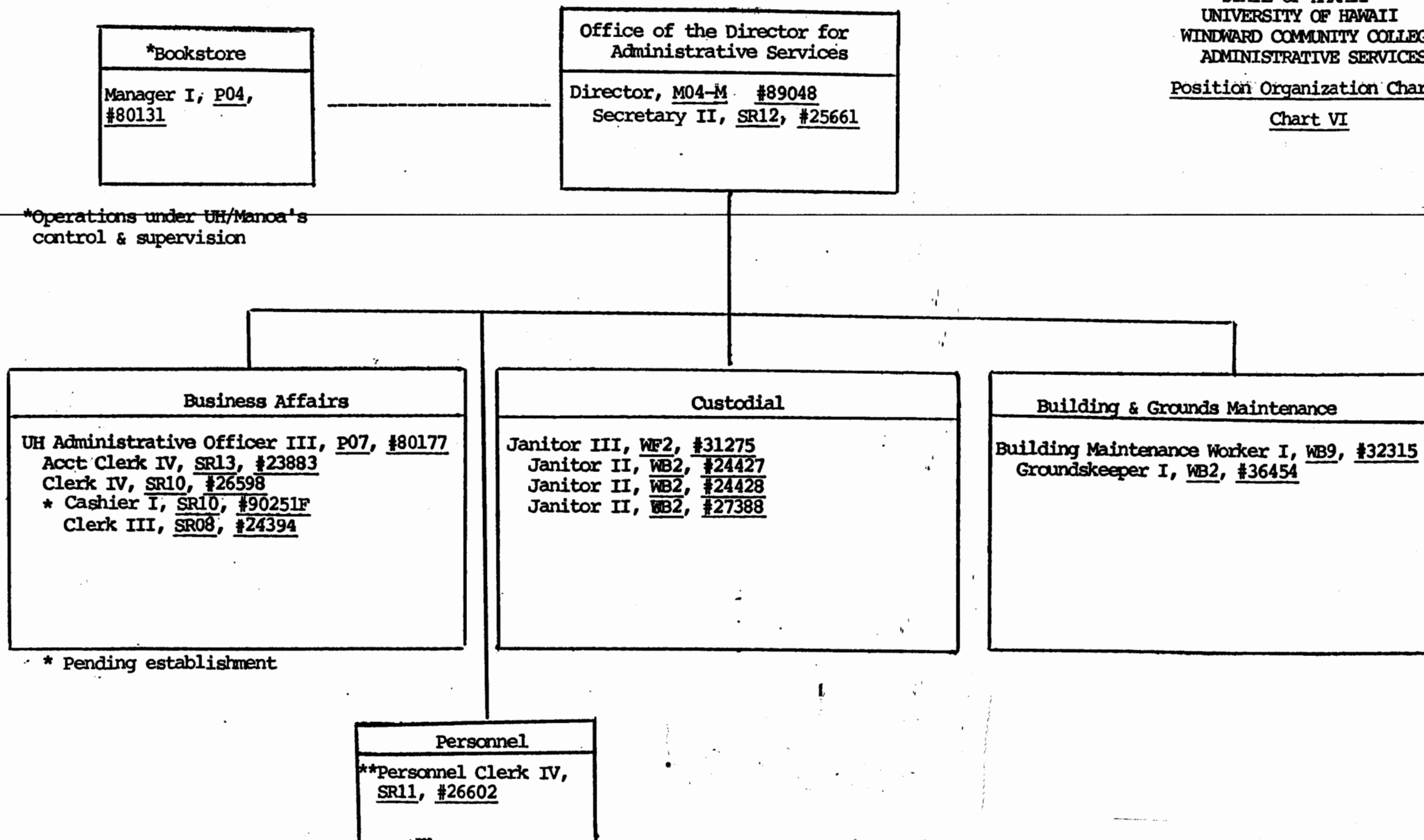
UH Educ & Acad Support Spec, P01, #98876  
(S Funds)

**CHART UPDATED**  
JUN 30 1990  
DATE \_\_\_\_\_

STATE OF HAWAII  
UNIVERSITY OF HAWAII  
WINDWARD COMMUNITY COLLEGE  
ADMINISTRATIVE SERVICES

Position Organization Chart

Chart VI



\*\*Approved by DPS eff. 1/1/89