

STATE OF HAWAII  
 UNIVERSITY OF HAWAII  
 UNIVERSITY OF HAWAII AT MANOA  
 COLLEGES OF ARTS AND SCIENCES  
 COLLEGE OF ARTS AND HUMANITIES  
 CHART I

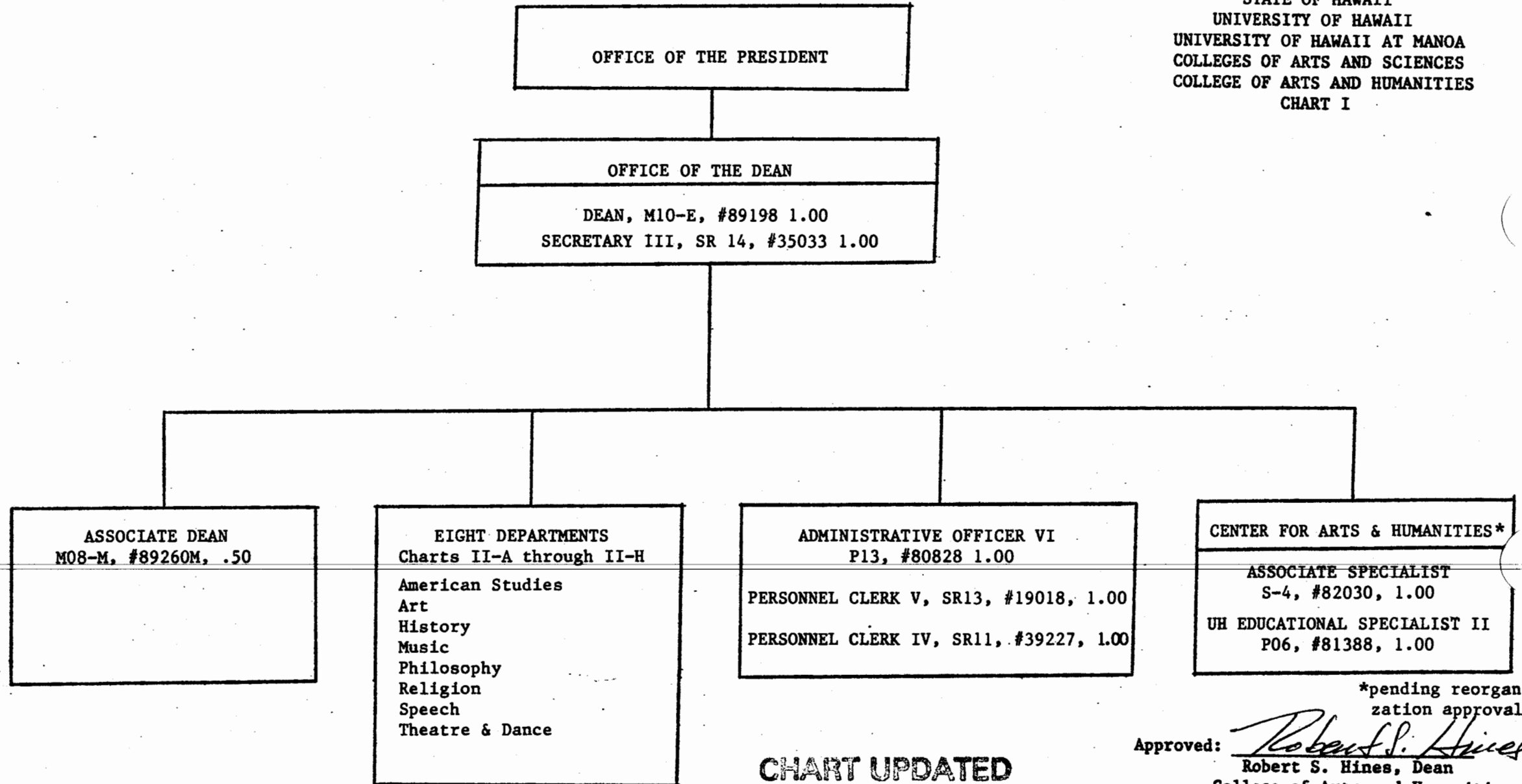


CHART UPDATED  
 JUN 30 1990  
 DATE \_\_\_\_\_

\*pending reorgani-  
 zation approval  
 Approved: Robert S. Hines  
 Robert S. Hines, Dean  
 College of Arts and Humanities  
 June 30, 1990

OFFICE OF THE DEAN

STATE OF HAWAII  
UNIVERSITY OF HAWAII  
UNIVERSITY OF HAWAII AT MANOA  
COLLEGES OF ARTS AND SCIENCES  
COLLEGE OF ARTS AND HUMANITIES

CHART II-A

DEPARTMENT OF AMERICAN STUDIES

Chair and Historic Preservation Director  
(appointed from faculty positions)

Secretary II, SR-12, #07787 1.00

Clerk-Steno II, SR-09, #22482 0.50

Faculty Positions

Full-time: #82030, 82091, 82176, 82524, 11.00  
82739, 82907, 83461, 83528,  
83812, 84596, 88499

Part-time: #83562H (.50) 0.50

Graduate Assistants 1.00  
#88108, 88171

14.00

CHART UPDATED

DATE JUN 30 1990

Approved:

*Robert S. Hines*

Robert S. Hines, Dean  
College of Arts and Humanities

JUNE 30, 1990

OFFICE OF THE DEAN

STATE OF HAWAII  
UNIVERSITY OF HAWAII  
UNIVERSITY OF HAWAII AT MANOA  
COLLEGES OF ARTS AND SCIENCES  
COLLEGE OF ARTS AND HUMANITIES

CHART II-B

DEPARTMENT OF ART

Chair and Associate Chair  
(appointed from faculty positions)

Secretary II, SR-12, #11068 1.00

Clerk-Steno II, SR-09, #14366 1.00

UH Educational Specialist II, PO6, #80499, 80523, 81319 2.50

UH Student Services SPI, PO3, #80667 1.00

Faculty Positions

Full-time: #82054, 82142, 82187, 82275, 82357, 82445, 29.00  
82501, 82572, 82583, 82584, 82616, 82746,  
82886, 82995, 83222, 83230, 83280, 83315,  
83323, 83436, 83588, 83752, 83956, 84050,  
84093, 84232, 84401, 84464, 84568

Graduate Assistants  
#88494

.50

35.00

CHART UPDATED

DATE JUN 30 1990

Approved: Robert S. Hines  
Robert S. Hines, Dean  
College of Arts and Humanities

JUNE 30, 1990

OFFICE OF THE DEAN

STATE OF HAWAII  
UNIVERSITY OF HAWAII  
UNIVERSITY OF HAWAII AT MANOA  
COLLEGES OF ARTS AND SCIENCES  
COLLEGE OF ARTS AND HUMANITIES

CHART II-C

DEPARTMENT OF HISTORY

Chair, Associate Chair, Undergraduate Advisor and World  
Civilization Program Director (appointed from faculty positions)

Secretary II, SR-12, #12852 1.00

Secretary I, SR-10, #15261, 21277 2.00

Clerk Steno II, SR-09, #17301 1.00

Faculty Positions

Full-time: #82025, 82147, 82164, 82370, 82428, 82446, 82475, 35.00  
82612, 83106, 83112, 83155, 83316, 83318, 83322,  
83328, 83330, 83415, 83501, 83568, 83576, 83591,  
83676, 83754, 83989, 84132, 84155, 84215, 84241,  
84333, 84415, 84432, 84461, 84524, 84794, 84839.

Part-time: #83562J (0.50), 83796 (0.25), 84002 (0.50), 1.75  
84074 (0.50)

Graduate Assistants

#85014, 88007, 88026, 88030, 88056 (0.25), 88079, 88080, 11.25  
88120, 88152, 88242, 88297, 88323, 88329, 88342, 88374,  
88456, 88507, 88547, 88543, 88555, 88595, 88598, 88617.

52.00

CHART UPDATED

DATE JUN 30 1990

Approved:

*Robert S. Hines*

Robert S. Hines, Dean  
College of Arts and Humanities  
June 30, 1990

OFFICE OF THE DEAN

STATE OF HAWAII  
UNIVERSITY OF HAWAII  
UNIVERSITY OF HAWAII AT MANOA  
COLLEGES OF ARTS AND SCIENCES  
COLLEGE OF ARTS AND HUMANITIES

CHART II-D

DEPARTMENT OF MUSIC

Chair & Associate Chair (appointed from faculty positions)

Secretary II, SR-12, #11959 1.00

Clerk-Steno II, SR-09, #15345 1.00

UH Educational Specialist I, P03, #80866 (.50) .50

UH Educational Specialist I, P03, #80381 1.00

Faculty Positions

Full-time: #82316, 82438, 82752, 82836, 82818, 82948, 21.00  
83048, 83284, 83361, 83454, 83463, 84056,  
84061, 84156, 84279, 84295, 84385, 84387,  
84406, 84442, 84635

Part-time: #83686H (.50), 83686I (.50) 1.00

Graduate Assistants

#88019, 88136, 88166, 88237, 88265, 4.50  
88283, 88445, 88603, 88629

30.00

CHART UPDATED

DATE JUN 30 1990

Approved: Robert S. Hines  
Robert S. Hines, Dean  
College of Arts and Humanities

June 30, 1990

OFFICE OF THE DEAN

STATE OF HAWAII  
UNIVERSITY OF HAWAII  
UNIVERSITY OF HAWAII AT MANOA  
COLLEGES OF ARTS AND SCIENCES  
COLLEGE OF ARTS AND HUMANITIES

CHART II-E

DEPARTMENT OF PHILOSOPHY

Chair & Associate Chair (appointed from faculty positions)	
Secretary II, SR-12, #12857	1.00
Clerk Steno II, SR-09, #15263	1.00
Clerk Typist III, SR-10, #12357	0.50
Assistant Specialist, S3, #82014	1.00
Faculty Positions	
<u>Full-time:</u> #82156, 82325, 82350, 82437, 82474, 82533, 82558, 82769, 82877, 83135, 83165, 83554, 83663, 84419	14.00
Graduate Assistants	
#88184, 88213, 88388, 88487	2.00
	19.50

**CHART UPDATED**  
JUN 30 1990  
DATE \_\_\_\_\_

Approved: Robert S. Hines  
Robert S. Hines, Dean  
College of Arts and Humanities

June 30, 1990

OFFICE OF THE DEAN

STATE OF HAWAII  
UNIVERSITY OF HAWAII  
UNIVERSITY OF HAWAII AT MANOA  
COLLEGES OF ARTS AND SCIENCES  
COLLEGE OF ARTS AND HUMANITIES

CHART II-F

DEPARTMENT OF RELIGION

Chair (appointed from faculty positions)

Secretary II, SR-12, #15012 1.00

Faculty Positions

Full-time: #82065, 82203, 82205, 82340, 8.00  
82459, 84089, 84119, 84168

Graduate Assistants

#88084, 88093, 88282, 88556 2.00

11.00

CHART UPDATED

DATE JUN 30 1990

Approved:

*Robert S. Hines*

Robert S. Hines, Dean  
College of Arts and Humanities

June 30, 1990

OFFICE OF THE DEAN

STATE OF HAWAII  
UNIVERSITY OF HAWAII  
UNIVERSITY OF HAWAII AT MANOA  
COLLEGES OF ARTS AND SCIENCES  
COLLEGE OF ARTS AND HUMANITIES

CHART II-G

DEPARTMENT OF SPEECH

Chair (appointed from faculty positions)

Secretary II, SR-12, #06732 1.00

Clerk Steno II, SR-09, #35122 1.00

Faculty Positions

Full-time: #82158, 82237, 82284, 82375, 11.00  
82504, 82596, 82667, 83250,  
83777, 83854, 84579

Part-time: #84859 (.75) .75

13.75

CHART UPDATED

DATE JUN 30 1990

Approved:

*Robert S. Hines*  
Robert S. Hines, Dean  
College of Arts and Humanities

June 30, 1990



OFFICE OF THE DEAN

STATE OF HAWAII  
UNIVERSITY OF HAWAII  
UNIVERSITY OF HAWAII AT MANOA  
COLLEGES OF ARTS AND SCIENCES  
COLLEGE OF ARTS AND HUMANITIES

CHART II-H

DEPARTMENT OF THEATRE & DANCE

Chair (appointed from faculty positions)	
Secretary II, SR-12, #13647	1.00
Clerk-Steno II, SR-09, #19027	1.00
UH Theatre Manager, PO6, #80119	1.00
UH Theatre Technician, PO7, #80700, 81269	2.00
Faculty Positions	
<u>Full-time:</u> #82110, 82227, 82234, 82290, 82302, 82640,	18.00
83010, 83026, 83079, 83252, 83337, 83439,	
83519, 84095, 84434, 84469, 84574, 84678	
Graduate Assistants	
#88000, 88051, 88052, 88053, 88127	5.00
88207, 88211, 88246, 88324, 88525	
	28.00

CHART UPDATED

JUN 30 1990

DATE \_\_\_\_\_

Approved:

*Robert S. Hines*

Robert S. Hines, Dean  
College of Arts and Humanities

June 30, 1990