

University of Hawaii at Manoa
Colleges of Arts and Sciences
Chart I

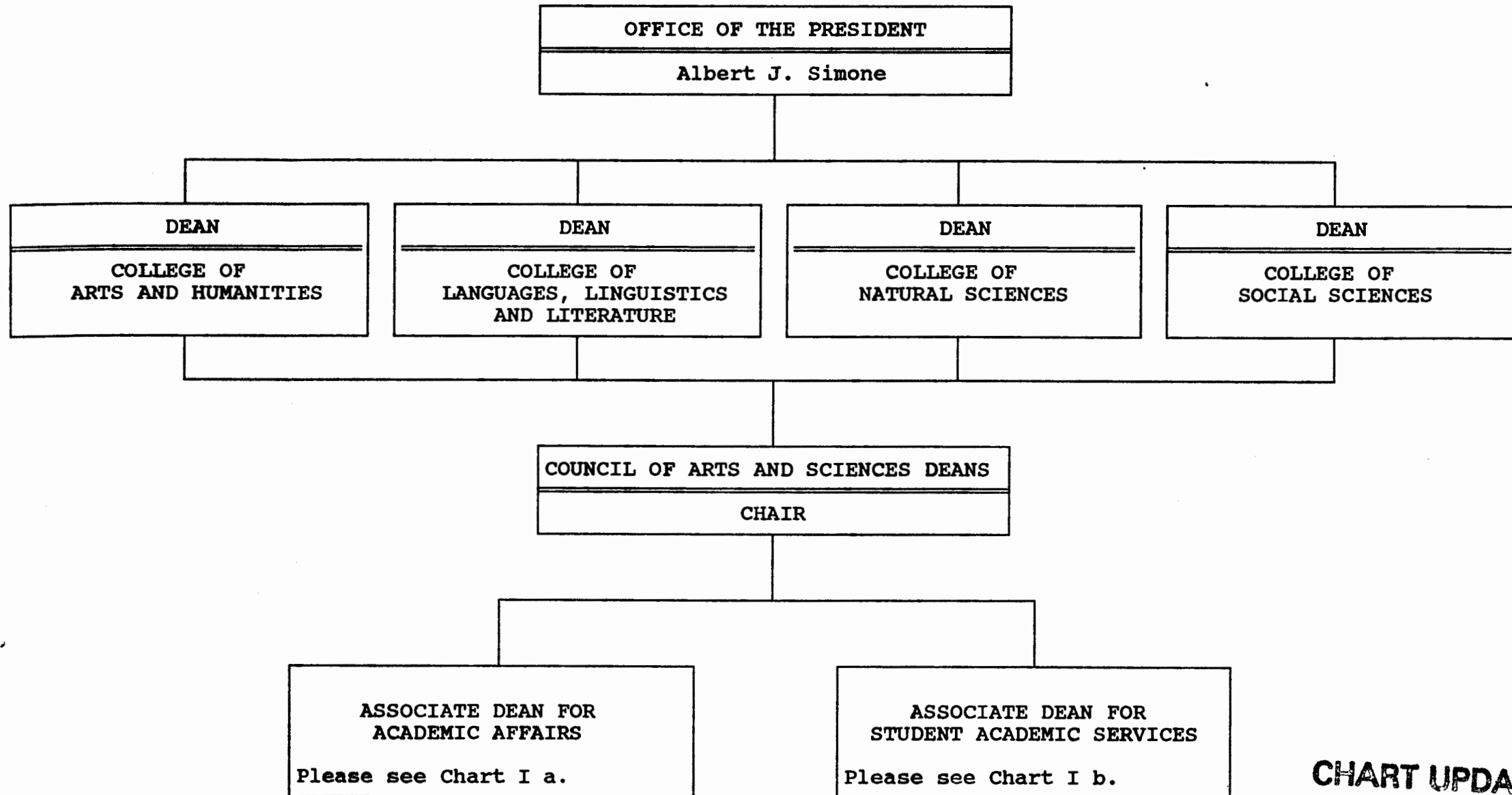


CHART UPDATED
DATE JUN 30 1990

University of Hawaii at Manoa
Colleges of Arts and Sciences
Chart I a

COUNCIL OF ARTS AND SCIENCES DEANS
CHAIR

ACADEMIC AFFAIRS
Associate Dean for Academic Affairs M08-AM #89010
Secretary II, SR 12 #14364

UH ADMIN. OFFICER III
P 07, #81335

SPECIAL PROGRAMS

ALL COLLEGES SUPPORT
Computer Specialist II (0.00 FTE)
(Temporary) #81917

Honors Program
Sec II, SR 12, #14426 (1.00)
Ed Spec III, P09 #80812(0.50)
Instructional Pos. (4.75):
#82506 (0.50) #85247 (0.50)
#82671 (1.00) #87431 (0.50)
#84563 (1.00) #88190 (0.50)
#85010 (0.25) #88372 (0.50)

Liberal Studies
Secretary I, SR10, (.50) #41019
Instructional Pos. (2.00)
#83044 (0.50)
#86356 (1.00)
#88451 (0.50)

Freshman Seminar
Instructional Pos. (2.25)
#82099 (.25) #85300 (.50)
#82360 (.25) #86126 (.25)
#82903 (.25) #86644 (.25)
#84209 (.25) #82086 (.25)

CHART UPDATED
DATE JUN 30 1990

Approved by: Charles H. Lomana
Title: Assoc. Dean, Academic Affairs
Date: 7/12/90
Chart Update: June 30, 1990

University of Hawaii at Manoa
Colleges of Arts and Sciences
Chart I b

COUNCIL OF ARTS AND SCIENCES DEANS
CHAIR

STUDENT ACADEMIC SERVICES
Associate Dean for Student Services
M06-AM, #89099
Secretary III, SR 14 #12848

UH ADMIN. OFFICER III
P 07, #81335

Stenographic and Clerical Services
Clerical Supervisor II, SR 12, #13480

Clerk Steno II, SR 9, #19119
Clerk Steno II, SR 9, #15801
Clerk Steno II, SR 9, #14862
Clerk Steno II, SR 9, #12738

Counseling and Advising
Educational Spec. IV, P 12, #80663

Educ. Spec. III, P 09, #80664
Educ. Spec. III, P 09, #80665
Educ. Spec. III, P 09, #80812 (0.50)
Educ. Spec. II, P 06, #80645 (0.50)
Educ. Spec. III, P 09, #81853 (1.00)
Faculty Advisors:
#82079 (0.50) #85207 (0.25)
#83968 (0.50) #86057 (0.50)
#84964 (0.50)

Kokua Program
Educational Spec. III, P 09, #80666

Educational Spec. I, P 03, #80636
Educational Spec. I, P 03, #80608
Educational Spec. II, P 06, #81566
*Clerk IV, SR 10, #90542F
SHOULD BE 90014F
SINCE 90542F
BECAME 81566

*To Be Established.

CHART UPDATED
DATE JUN 30 1990

Approved by: Charles H. Lamm
Title: Assoc. Dean, Academic Affairs
Date: 7/12/90
Chart Update: June 30, 1990