

SUPERSEDED
REORG. 7/20/90 INTRAMURAL SPORTS
TRANSFERRED TO VP STUDENT AFFAIRS

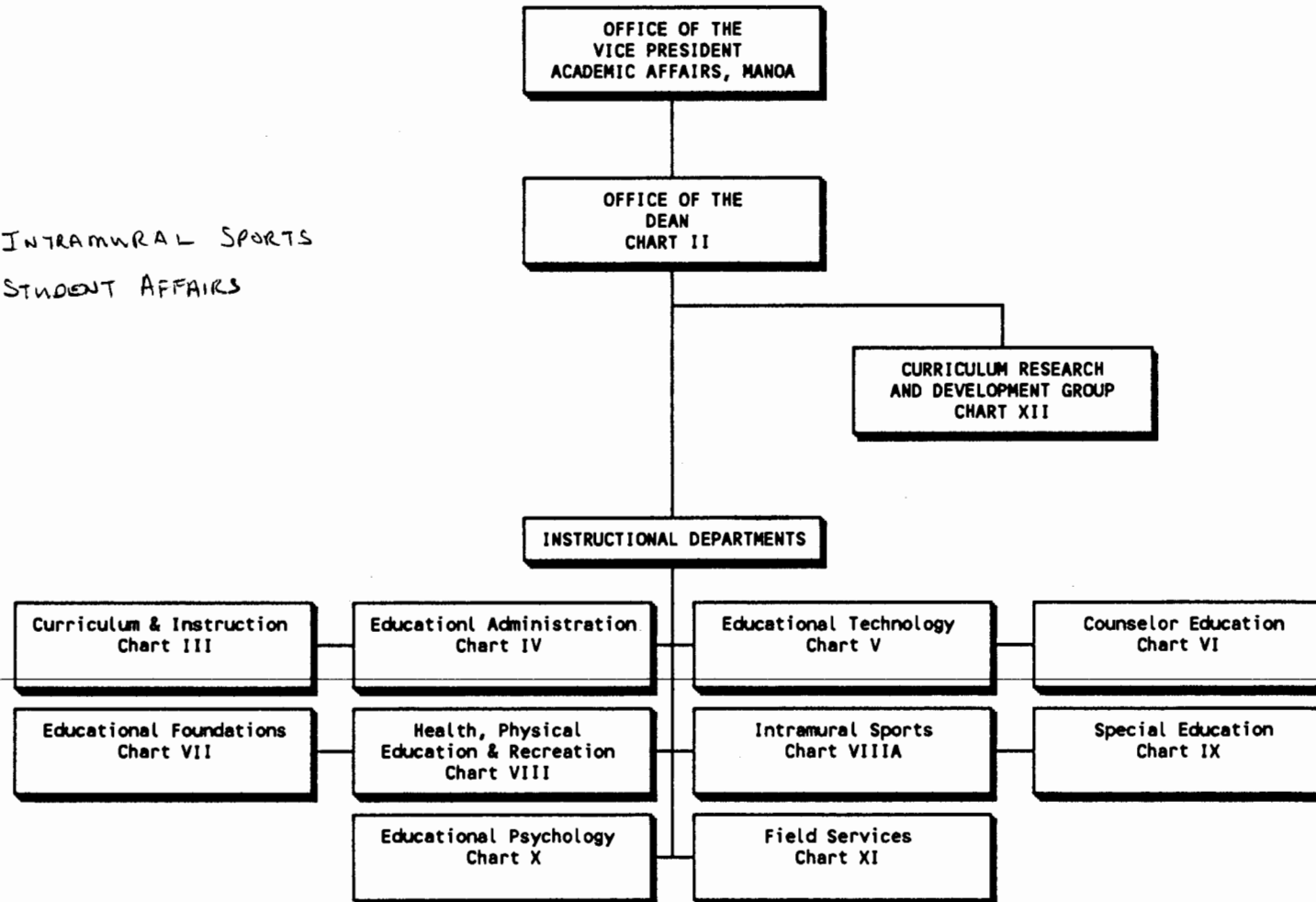


CHART UPDATED

DATE JUN 30 1990

STATE OF HAWAII/UNIVERSITY OF HAWAII
UNIVERSITY OF HAWAII AT MANOA
COLLEGE OF EDUCATION/OFFICE OF THE DEAN
POSITION ORGANIZATION CHART - CHART II

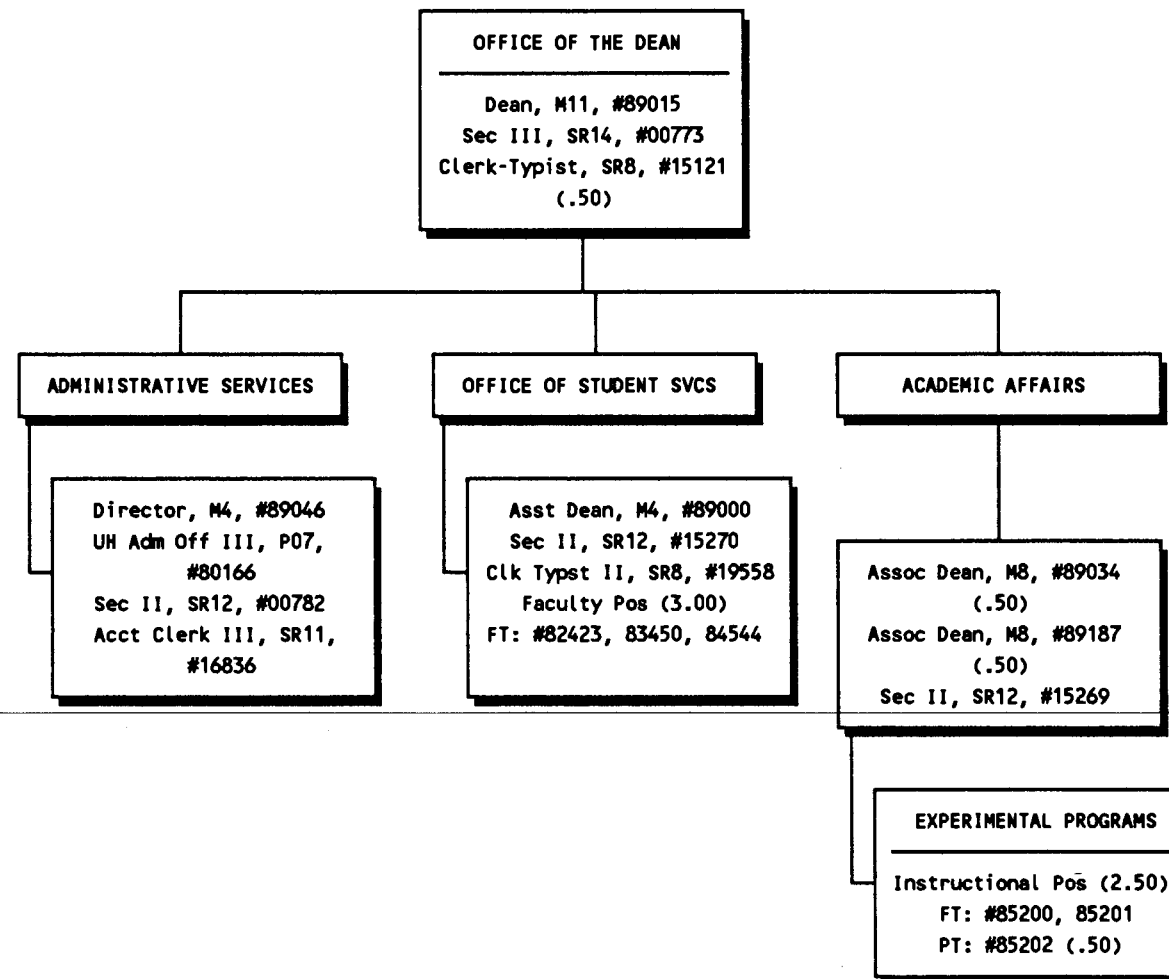
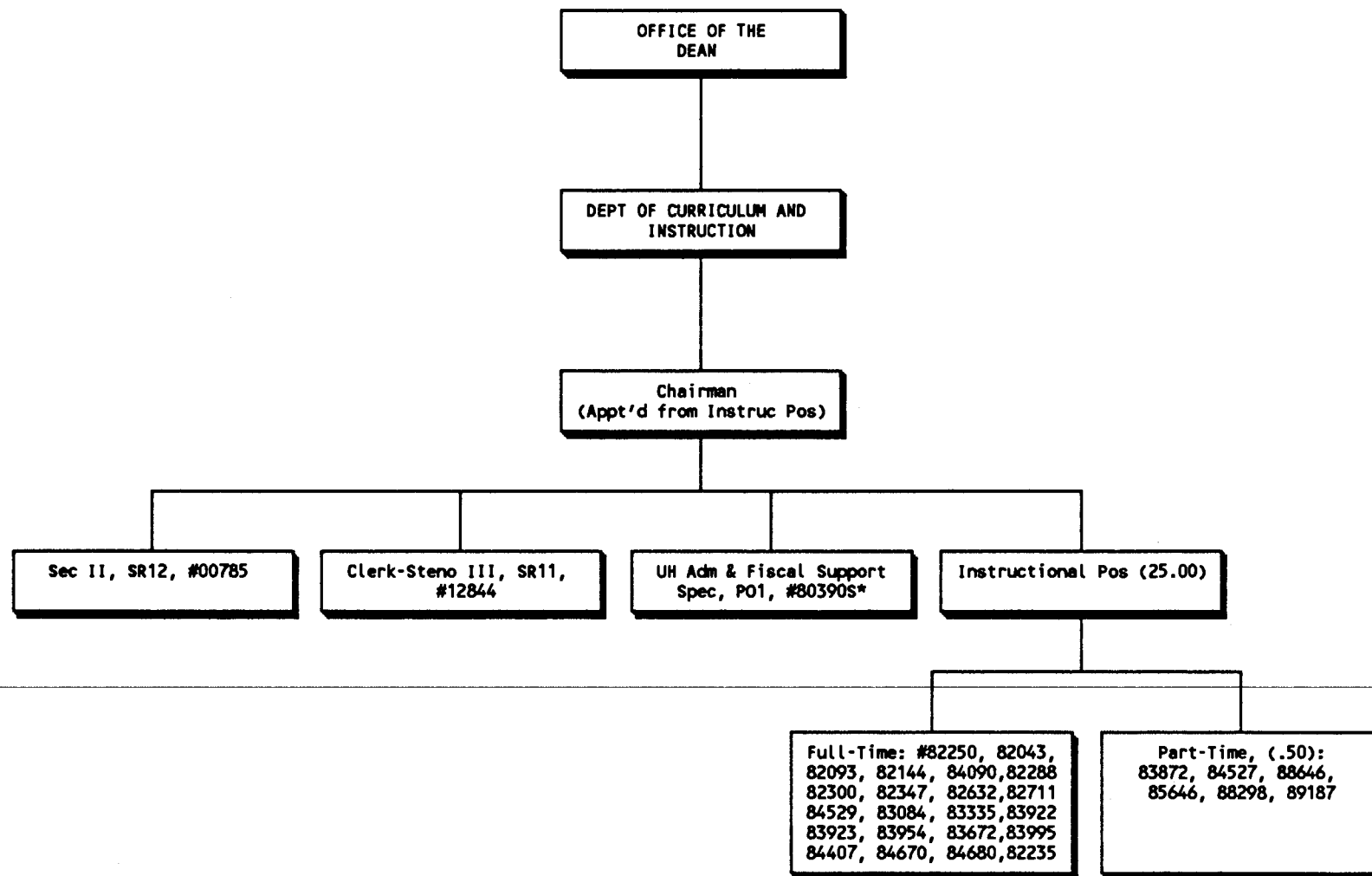


CHART UPDATED
JUN 30 1990
DATE _____

STATE OF HAWAII
UNIVERSITY OF HAWAII AT MANOA
COLL OF EDUC/CURRICULUM & INSTRUCTION
POSITION ORGANIZATION CHART-CHART III



*Temporary position: Center for Economic Education

CHART UPDATED

DATE JUN 30 1990

STATE OF HAWAII
UNIVERSITY OF HAWAII AT MANOA
COLL OF EDUC/EDUCATIONAL ADMINISTRATION
POSITION ORGANIZATION CHART - CHART IV

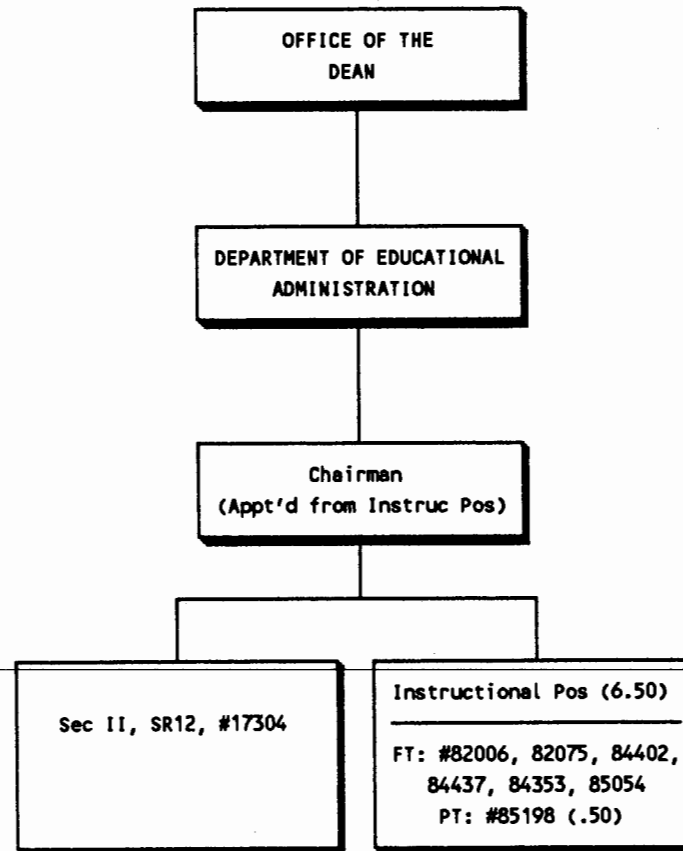


CHART UPDATED
DATE JUN 30 1990

STATE OF HAWAII
UNIVERSITY OF HAWAII AT MANOA
COLL OF EDUC/EDUCATIONAL TECHNOLOGY
POSITION ORGANIZATION CHART - CHART V

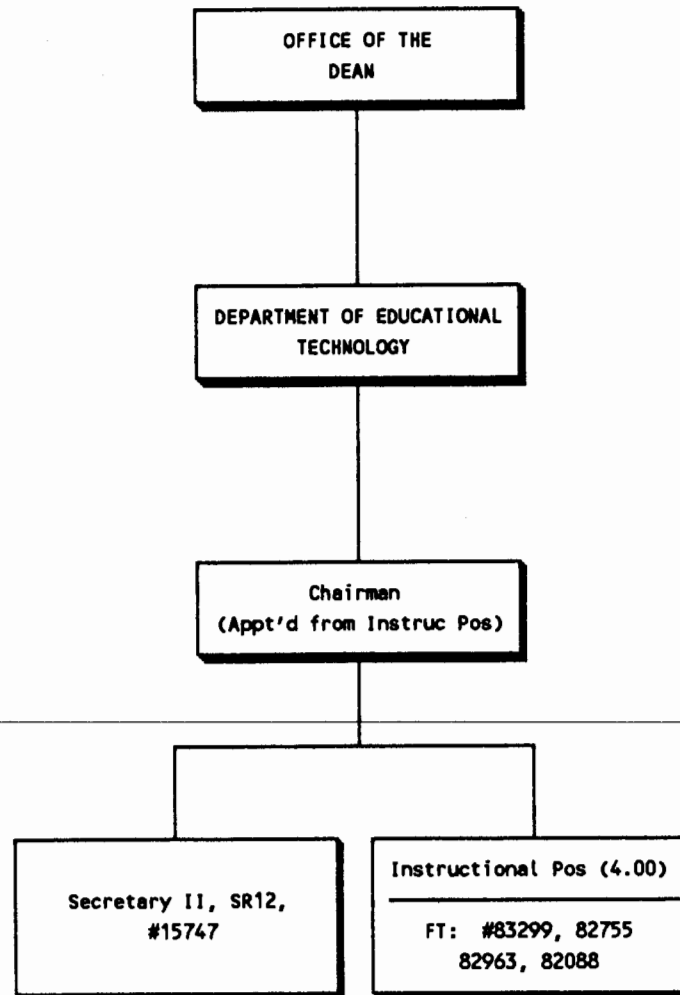


CHART UPDATED
DATE JUN 30 1990

STATE OF HAWAII
UNIVERSITY OF HAWAII AT MANOA
COLL OF EDUCATION/COUNSELOR EDUCATION
POSITION ORGANIZATION CHART - CHART VI

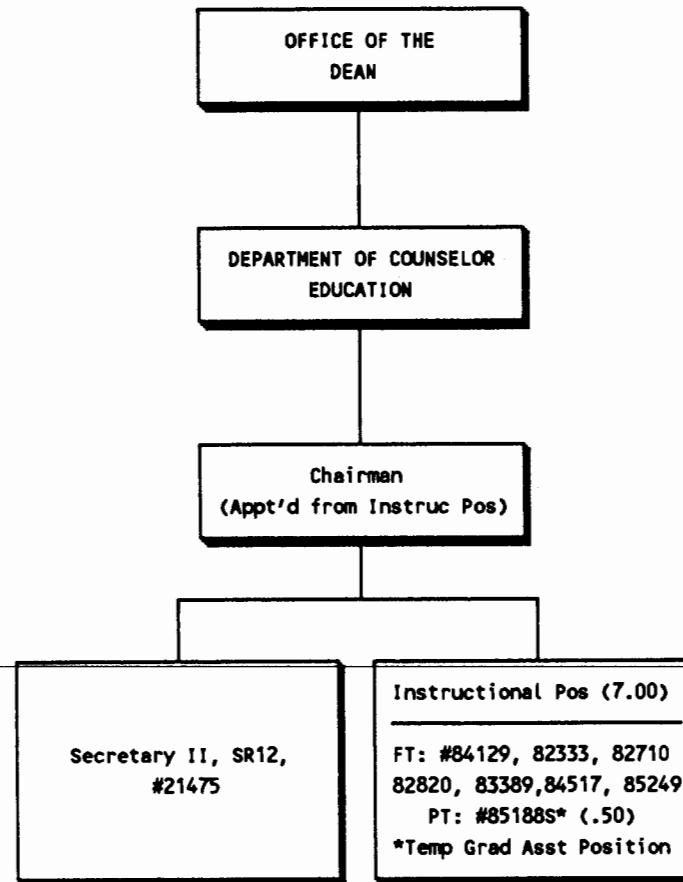


CHART UPDATED
DATE JUN 30 1990

STATE OF HAWAII
UNIVERSITY OF HAWAII AT MANOA
COLL OF EDUC/EDUCATIONAL FOUNDATIONS
POSITION ORGANIZATION CHART-CHART VII

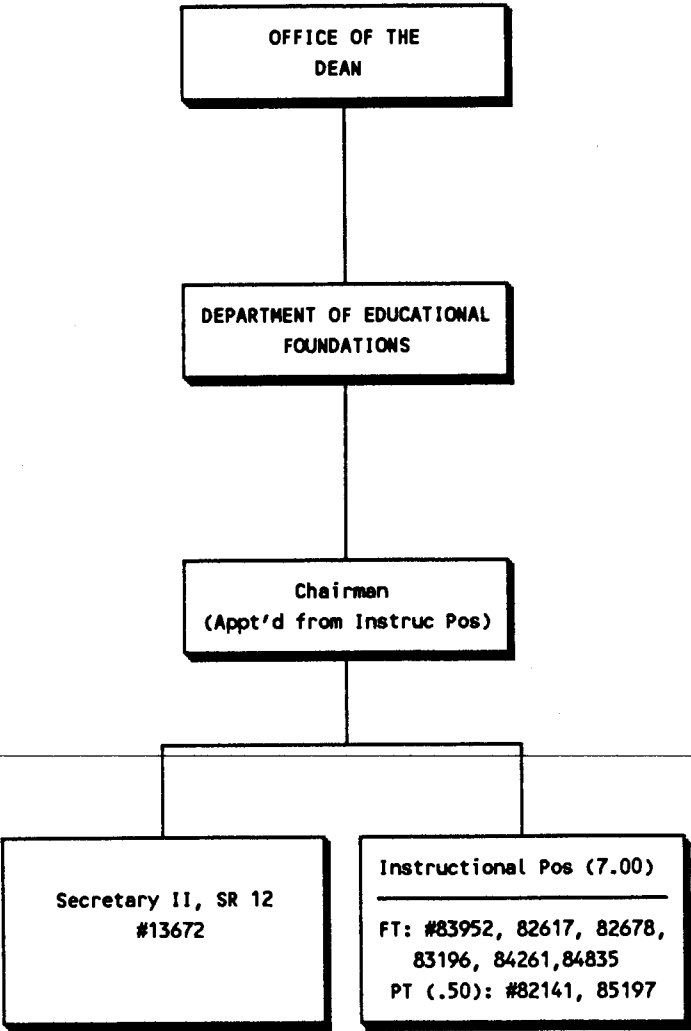


CHART UPDATED

DATE JUN 30 1990

STATE OF HAWAII
UNIVERSITY OF HAWAII AT MANOA
COLL OF EDUC/HEALTH, P.E. & RECREATION
POSITION ORGANIZATION CHART-CHART VIII

SUPERSEDED
REORG. 7/20/90 INTRAMURAL
SPORTS TRANSFERRED TO
VP STUDENT AFFAIRS

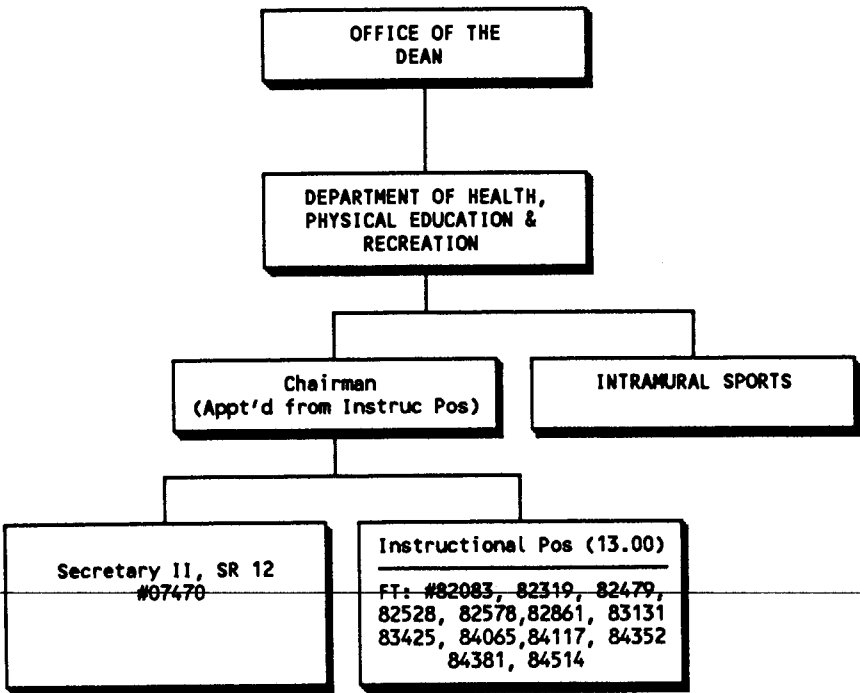


CHART UPDATED
DATE JUN 30 1990

STATE OF HAWAII/UNIVERSITY OF HAWAII
UNIVERSITY OF HAWAII AT MANOA
COLLEGE OF EDUCATION/INTRAMURAL SPORTS
POSITION ORGANIZATION CHART-CHART VIIIA

SUPERSEDED
REGR. 7/20/90 INTRAMURAL
SPORTS TRANSFERRED TO VP STUDENT
AFFAIRS. THREE LOCKER ROOM ATTENDANTS
TRANSFERRED TO ATHLETICS.

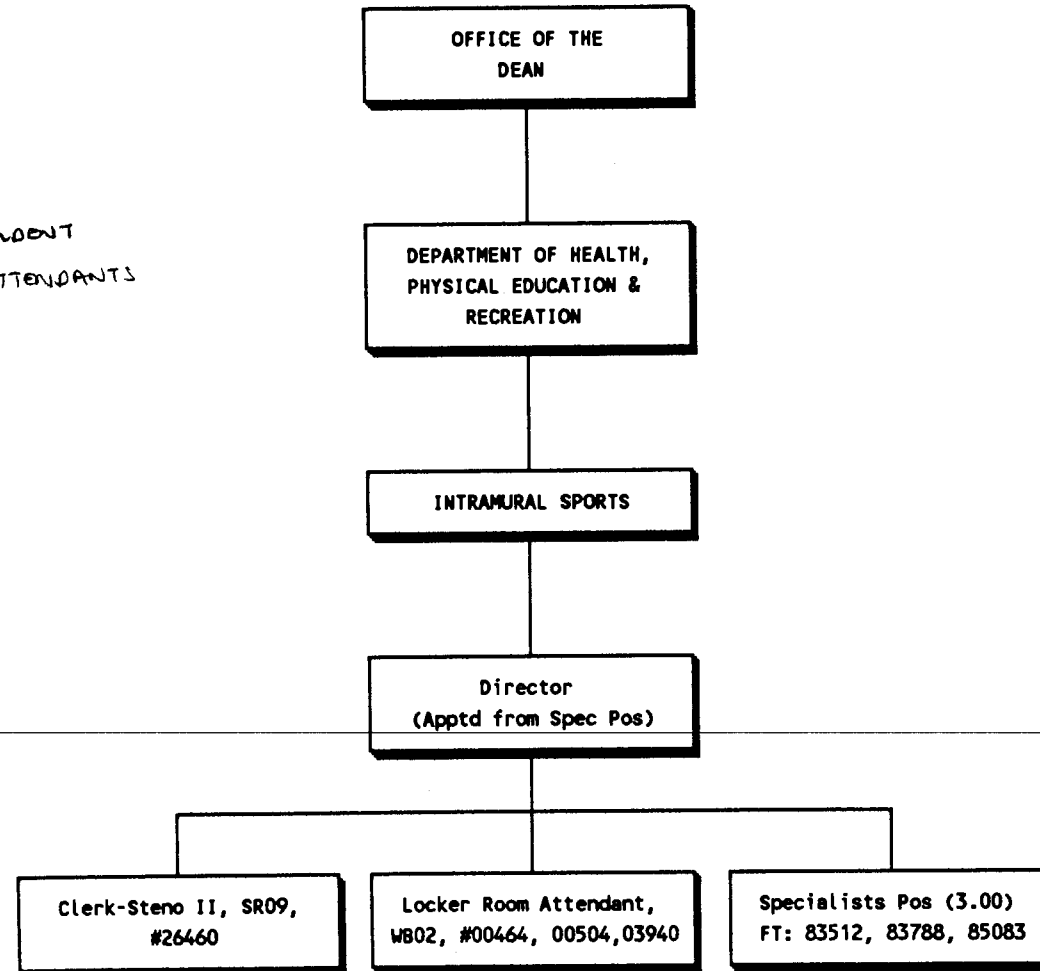


CHART UPDATED
JUN 30 1990
DATE _____

STATE OF HAWAII/UNIVERSITY OF HAWAII
UNIVERSITY OF HAWAII AT MANOA
COLLEGE OF EDUCATION/SPECIAL EDUCATION
POSITION ORGANIZATION CHART - CHART IX

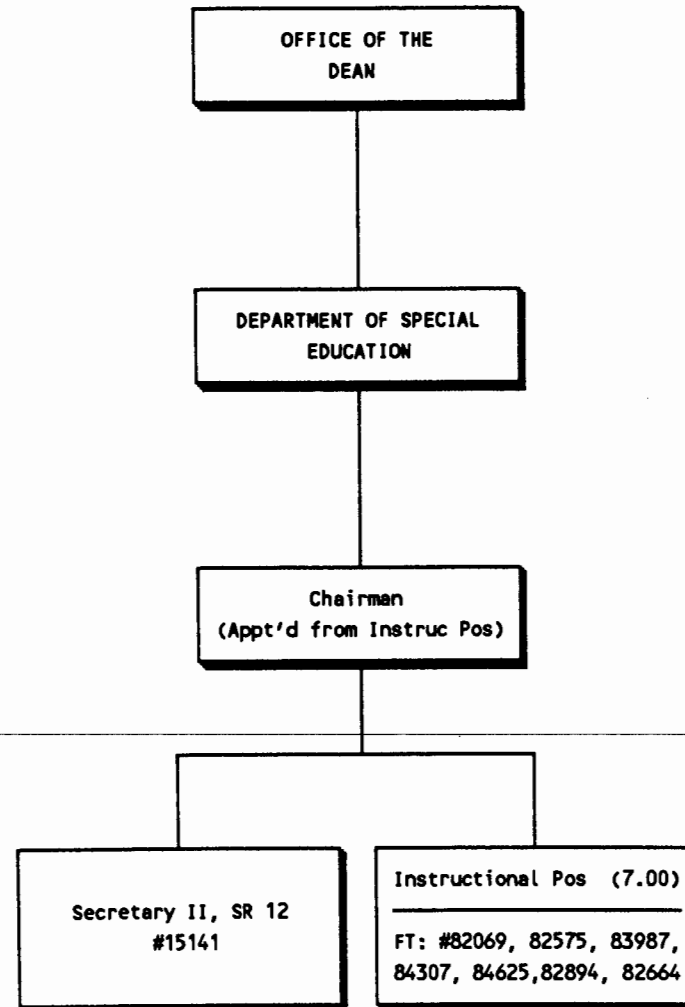


CHART UPDATED
DATE JUN 30 1990

STATE OF HAWAII/UNIVERSITY OF HAWAII
UNIVERSITY OF HAWAII AT MANOA
COLL OF EDUC/EDUCATIONAL PSYCHOLOGY
POSITION ORGANIZATION CHART - CHART X

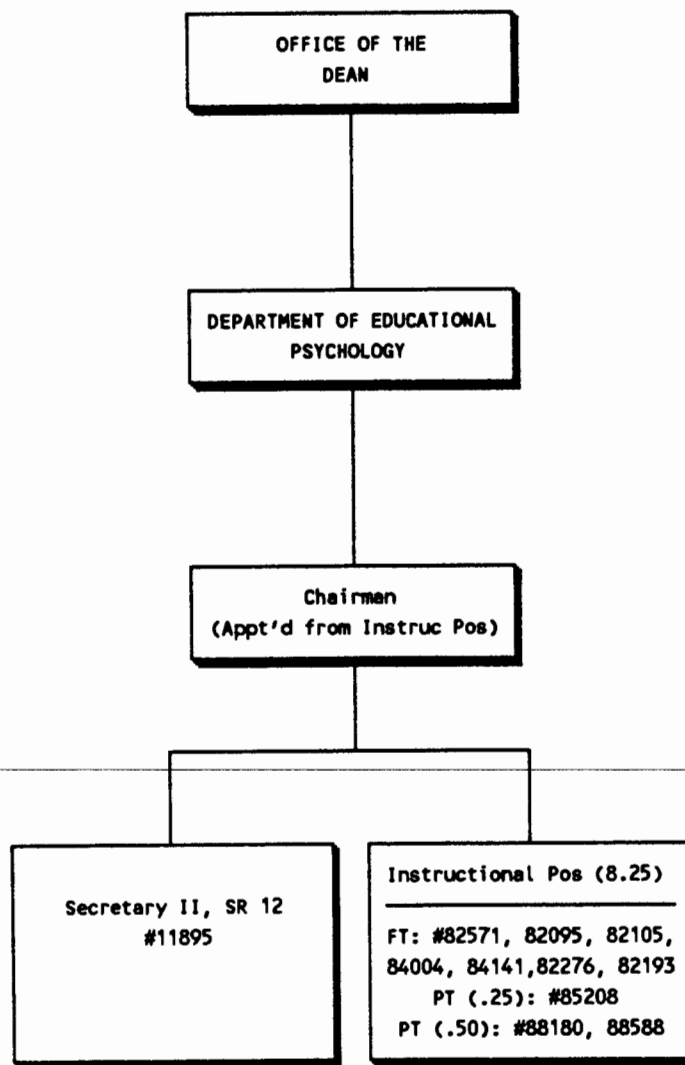


CHART UPDATED

DATE JUN 30 1990

STATE OF HAWAII/UNIVERSITY OF HAWAII
UNIVERSITY OF HAWAII AT MANOA
COLLEGE OF EDUCATION/FIELD SERVICES
POSITION ORGANIZATION CHART - CHART XI

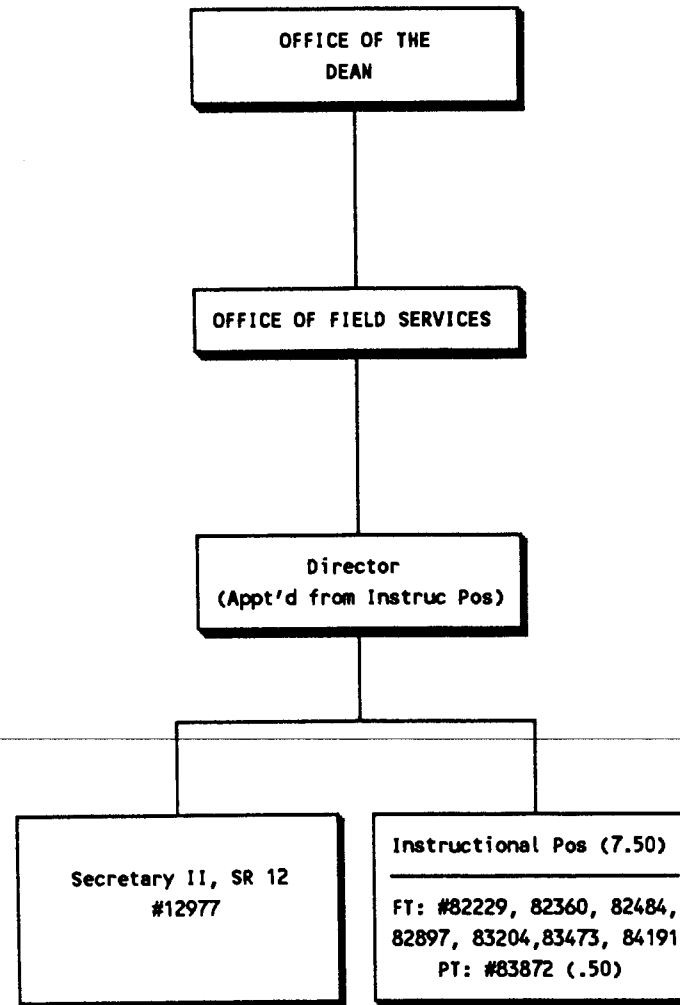


CHART UPDATED
DATE JUN 30 1990

STATE OF HAWAII
UNIVERSITY OF HAWAII AT MANOA
COLLEGE OF EDUCATION
CURRICULUM RESEARCH
AND DEVELOPMENT GROUP

Position Organization Chart

Chart XII

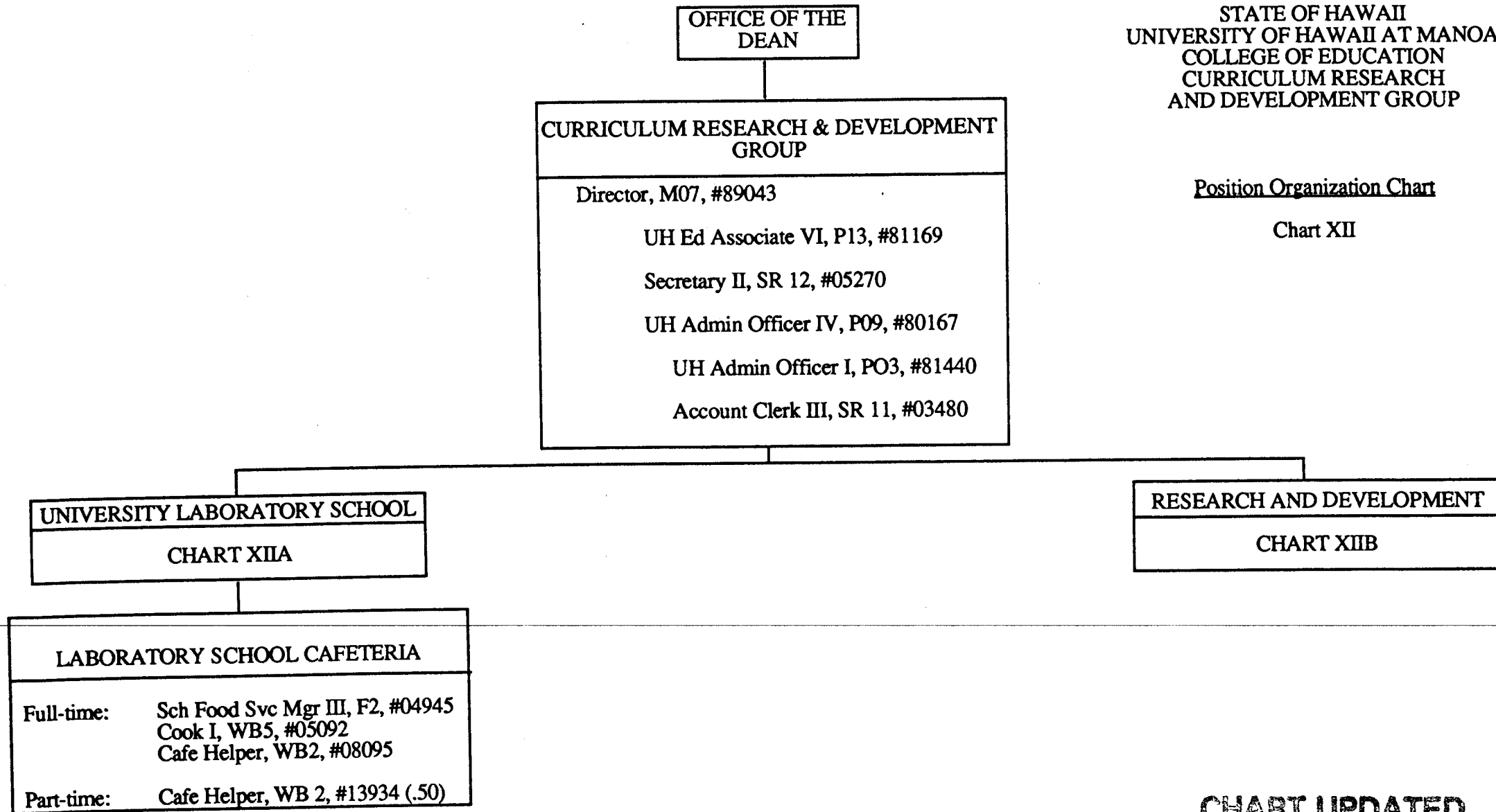
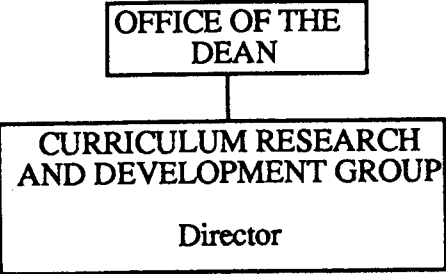


CHART UPDATED

DATE JUN 30 1990

STATE OF HAWAII
UNIVERSITY OF HAWAII AT MANOA
COLLEGE OF EDUCATION
CURRICULUM RESEARCH
AND DEVELOPMENT GROUP



Position Organization Chart

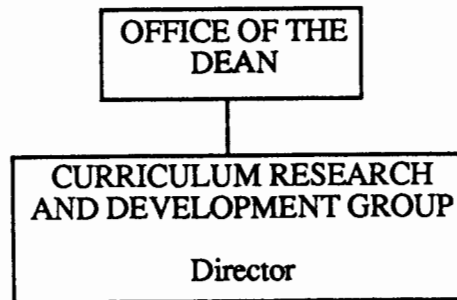
Chart XIIA

UNIVERSITY LABORATORY SCHOOL	
Admintr-Univ Lab Sch & Prof, M05, #89257 (.90)	
Secretary II, SR 12, #00783 Clerk-Typist II, SR 08, #36690	
Instructional Positions (1.00)	
Part-time:	Assoc Prof, #82154 (.20); #83227 (.05), #84608 (.10) Asst Prof, #82160 (.15), #82793 (.20), #84377 (.30)
Administrative, Professional, Technical Positions (14.10)	
Full-time:	UH Ed Assoc V, P11, #80480 UH Ed Assoc IV, P09, #81170
Part-time:	UH Ed Assoc VI, P13, #80435 (.15), #80470 (.20) UH Ed Assoc V, P11, #80466 (.25), #80468 (.15) UH Ed Assoc IV, P09, #80433 (.85), #80484 (.90), #80917 (.15), #80418 (.15), #80474 (.30), #80993 (.80), #80472 (.50), #80482 (.40) UH Ed Assoc III, P07, #80420 (.50), #80491 (.80), #80434 (.75), #80483 (.30), #80485 (.50) UH Ed Assoc II, P05, #80849 (.80), #80465 (.80), #80481 (.90), #80494 (.90) UH Ed Assoc I, P03, #80464 (.80), #81811 (.25)

CHART UPDATED

JUN 30 1990

DATE _____



STATE OF HAWAII
UNIVERSITY OF HAWAII AT MANOA
COLLEGE OF EDUCATION
CURRICULUM RESEARCH
AND DEVELOPMENT GROUP

Position Organization Chart

Chart XIIB

RESEARCH AND DEVELOPMENT	
Instructional Positions (12.60)	
Full-time:	Professor, #84031, #83951, #82272 Asst Prof, #82387, #84077, #83380, #82950
Part-time:	Admintr-Univ Lab Sch & Prof, M05, #89257 (.10) Professor, #82141M (.50) Assoc Prof, #83227 (.95), #82154 (.80), #84608 (.90) Asst Prof, #82793 (.80), #84377 (.70), #82160 (.85)
Administrative, Professional, Technical Positions (15.90)	
Full-time:	UH Ed Assoc VI, P13, #80486, #80495, #80443 UH Ed Assoc V, P11, #80440 UH Ed Assoc III, P07, #80228, #80476
Part-time:	UH Ed Assoc VI, P13, #80470 (.80), #80435 (.85) UH Ed Assoc V, P11, #80468 (.85), #80466 (.75) UH Ed Assoc IV, P09, #80484 (.10), #80917 (.85), #80993 (.20), #80474 (.70), #80418 (.85), #80472 (.50), #80433 (.15), #80482 (.60) UH Ed Assoc III, P07, #80420 (.50), #80491 (.20), #80483 (.70), #80485 (.50) UH Ed Assoc II, P05, #80465 (.20), #80849 (.20), #80481 (.10), #80494 (.10) UH Ed Assoc I, P03, #80464 (.20)
Clerk-Typist III, SR 10, #35206	

CHART UPDATED

DATE JUN 30 1990