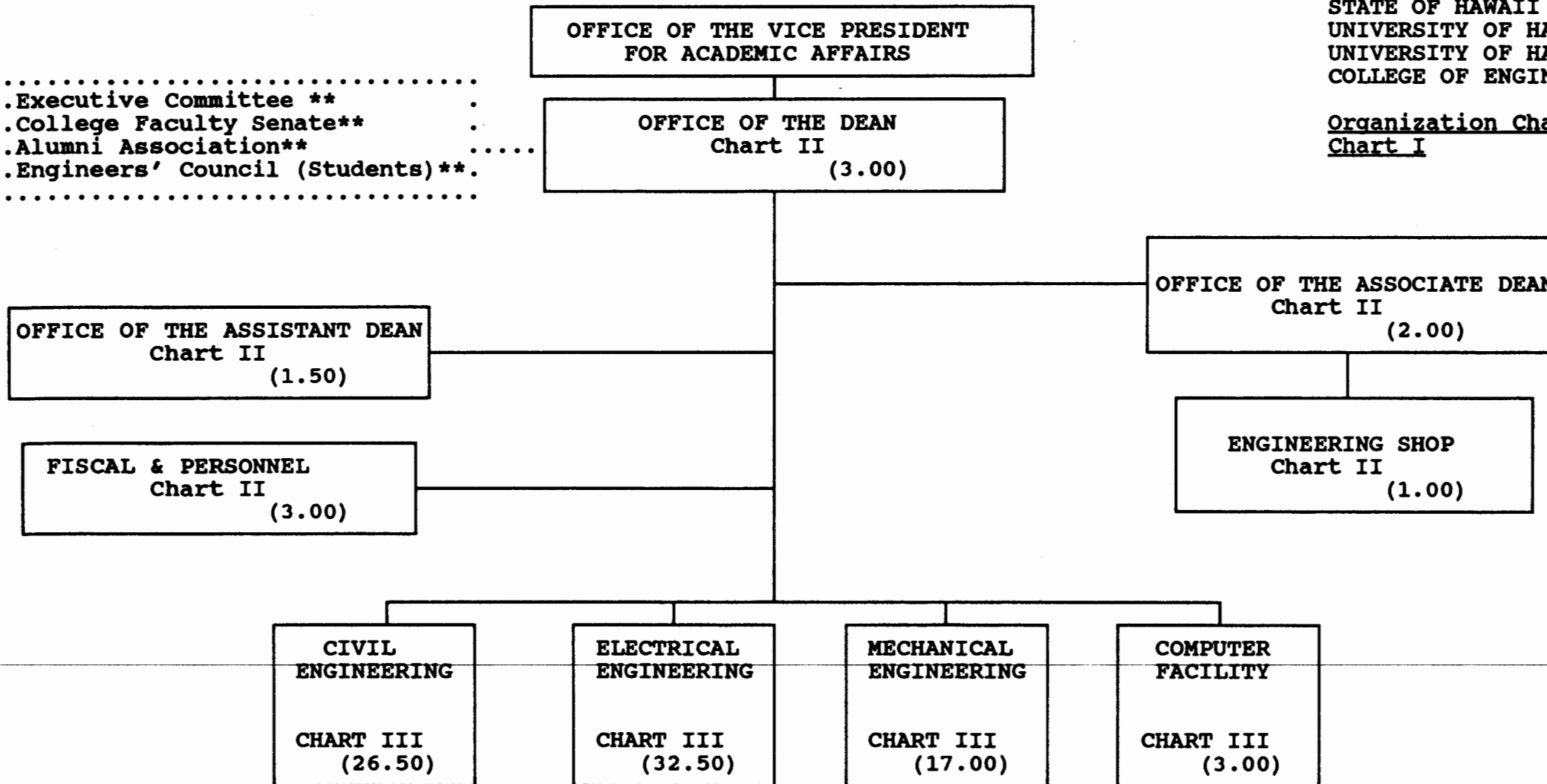


STATE OF HAWAII  
UNIVERSITY OF HAWAII  
UNIVERSITY OF HAWAII AT MANOA  
COLLEGE OF ENGINEERING (89.50)\*

Organization Chart  
Chart I

.....  
.Executive Committee \*\* :  
.College Faculty Senate\*\* :  
.Alumni Association\*\* .....  
.Engineers' Council (Students)\*\*.  
.....



Revised June 25, 1990

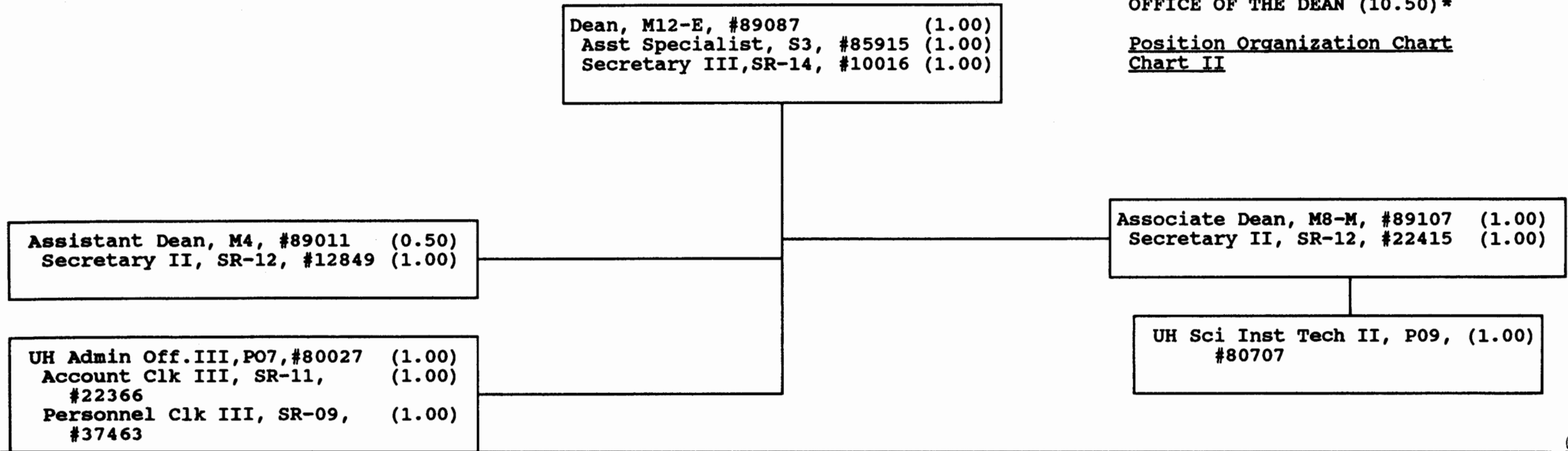
\*Total General Fund Position Count  
\*\*Advisory Committees

**CHART UPDATED**  
DATE JUN 30 1990

Approved by: Reginald H. F. Young  
Title: Interim Dean of Engineering  
Date: 7/10/90

STATE OF HAWAII  
UNIVERSITY OF HAWAII  
UNIVERSITY OF HAWAII AT MANOA  
COLLEGE OF ENGINEERING  
OFFICE OF THE DEAN (10.50)\*

Position Organization Chart  
Chart II



Revised June 25, 1990

**CHART UPDATED**  
DATE JUN 30 1990

\*General Fund Position Count

Approved by:

*Reginald H. F. Young*  
Reginald H. F. Young  
Title: Interim Dean of Engineering  
Date: 7/10/90

OFFICE OF THE DEAN

STATE OF HAWAII  
UNIVERSITY OF HAWAII AT MANOA  
COLLEGE OF ENGINEERING  
INSTRUCTIONAL DEPARTMENTS (79.00)\*  
Position Organization Chart  
Chart III

Department of Civil Engineering	Department of Electrical Engineering	Department of Mechanical Engineering	Computer Facility
Chairman (Appointed from Instructional Positions) Secretary II, SR-12, (1.00) #15409 Clk-Steno II, SR-09, (1.00) #18019 UH Sci Inst Tech II, (1.00) PO9, #81111 Instructional Positions (21.50) <u>Full Time:</u> #82351, 82367, 82566, 82614, 82647, 82760, 82783, 82844, 82966, 83019, 83352, 83630, 83762, 83876, 84290, 84299, 84334, 84363, 84548, 84902, 85355 <u>Part Time:</u> #84672 (0.50) Graduate Assistants (2.00) #85777 (0.50) 88347 (0.50) 88537 (0.50) 88664 (0.50)  (26.50)	Chairman (Appointed from Instructional Positions) Secretary II, SR-12, (1.00) #12853 Clk-Typist II, SR-08, (1.00) #28692 UH Electronics Tech II (2.00) PO9, #81078, #81876 Instructional Positions (24.50) <u>Full Time:</u> #82346, 82724, 82787, 82978, 83014, 86032, 83226, 83264, 83268, 83401, 83412, 83723, 83895, 84033, 84113, 84252, 84389, 84436, 84498, 84506, 84677, 85081, 85396, 85397 <u>Part Time:</u> #82004 (0.50) Graduate Assistants (4.00) #85291 (0.50) 85605 (0.50) 88025 (0.50) 88069 (0.50) 88128 (0.50) 88195 (0.50) 88522 (0.50) 88551 (0.50)  (32.50)	Chairman (Appointed from Instructional Positions) Secretary II, SR-12, (1.00) #13511 Clk-Steno II, SR-09, (0.50) #22335 Electro Mechanical Lab (1.00) Tech, WB-14, #09067  Instructional Positions (13.00) <u>Full-time:</u> #82267, 82320, 82353, 82374, 82623, 82658, 82957, 83009, 83205, 83251, 83340, 83696, 84262 Graduate Assistants (1.50) #88158 (0.50) 88528 (0.50) 88609 (0.50)  (17.00)	UH Electronics Engineer(1.00) I, P12, #80003 UH Computer Specialist (1.00) III, PO7, #81997 UH Electronics Tech II,(1.00) PO9, #81998  (3.00)

Revised June 25, 1990

CHART UPDATED

DATE JUN 30 1990

\*General Fund Position Count

Approved by: Reginald H. F. Young  
Title: Interim Dean of Engineering  
Date: 7/10/90