

**APPROVED BY THE UNIVERSITY  
BOARD OF REGENTS**

**MAR 15 1991**

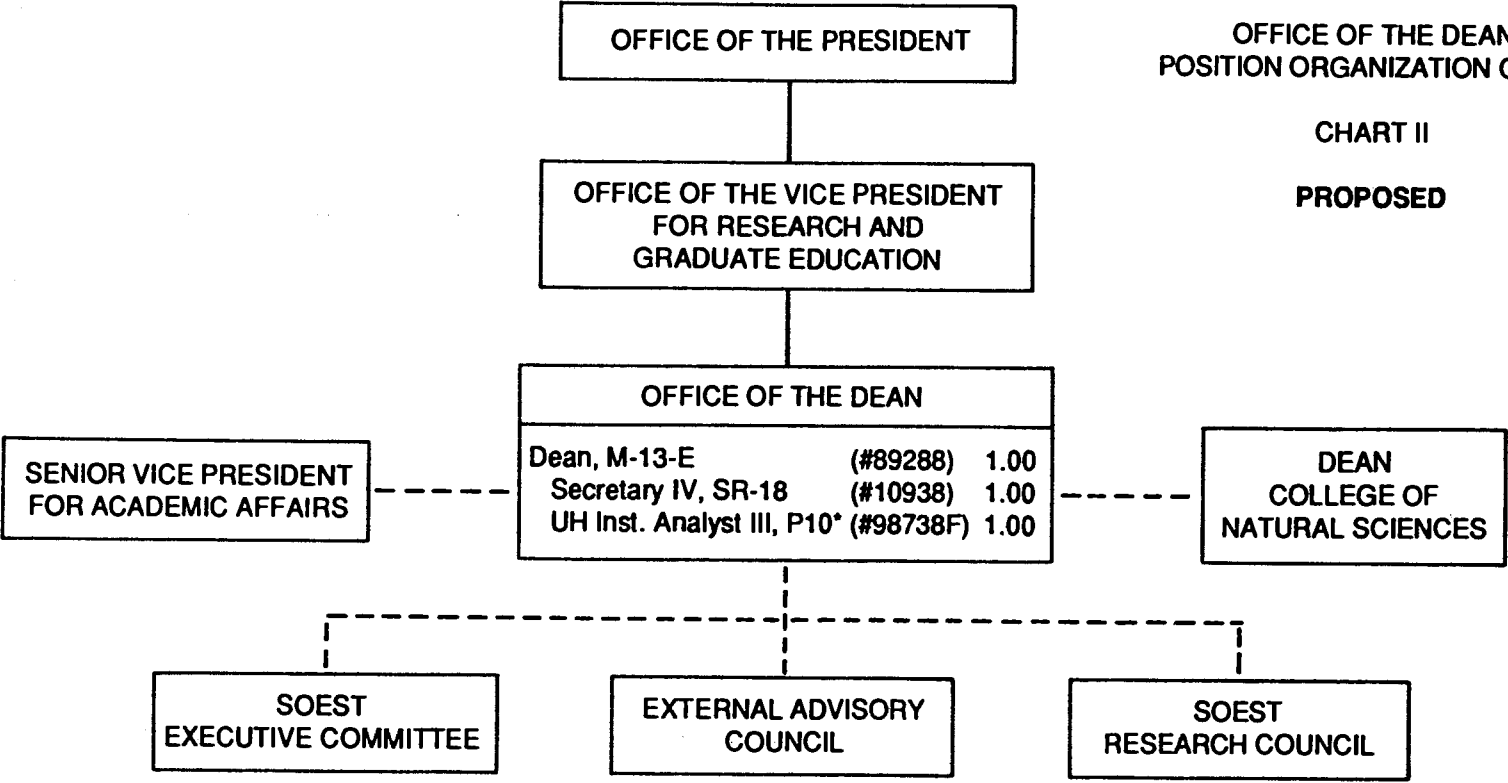
**Date**

STATE OF HAWAII  
UNIVERSITY OF HAWAII  
UNIVERSITY OF HAWAI AT MANOA  
SCHOOL OF OCEAN AND EARTH  
SCIENCE AND TECHNOLOGY

OFFICE OF THE DEAN  
POSITION ORGANIZATION CHART

CHART II

PROPOSED



\* To be established/reclassified to the position of Assistant to the Dean

APPROVED BY THE UNIVERSITY  
BOARD OF REGENTS  
MAR 15 1991

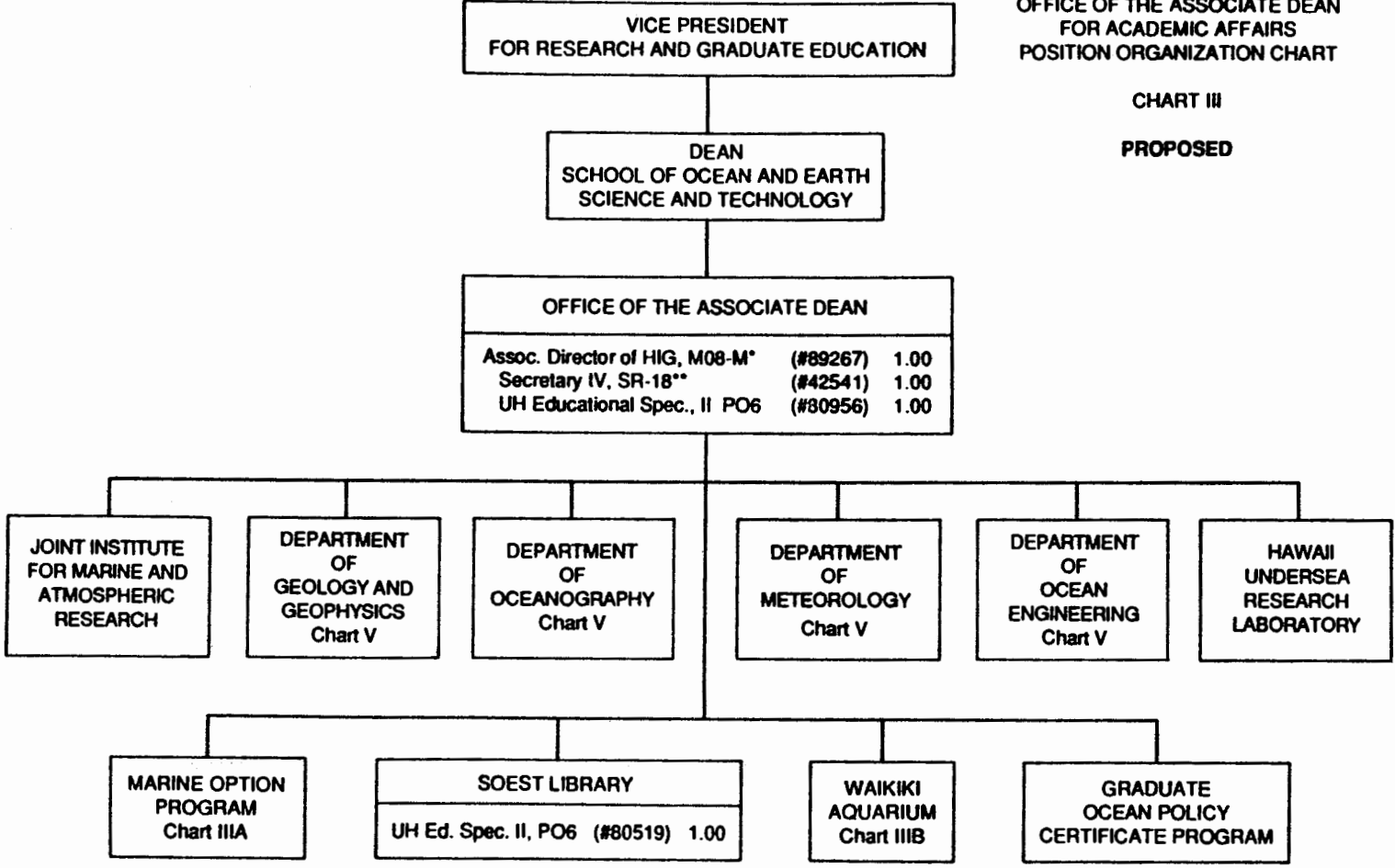
Date

STATE OF HAWAII  
UNIVERSITY OF HAWAII  
UNIVERSITY OF HAWAII AT MANOA  
SCHOOL OF OCEAN AND EARTH  
SCIENCE AND TECHNOLOGY

OFFICE OF THE ASSOCIATE DEAN  
FOR ACADEMIC AFFAIRS  
POSITION ORGANIZATION CHART

CHART III

PROPOSED



\* To be reclassified to the position of Associate Dean, M09  
\*\* To be reclassified to Secretary III, SR-16

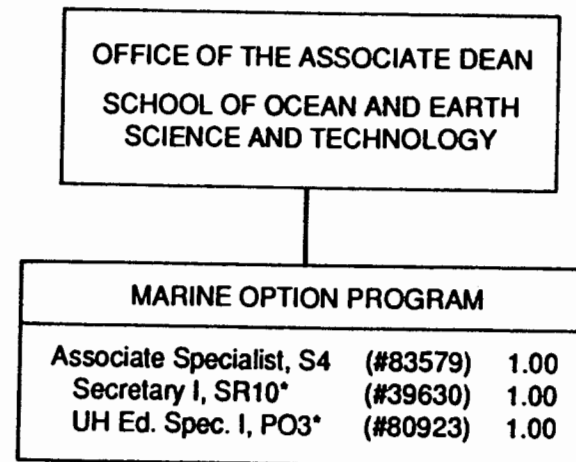
APPROVED BY THE UNIVERSITY  
BOARD OF REGENTS  
MAR 15 1991  
Date

STATE OF HAWAII  
UNIVERSITY OF HAWAII  
UNIVERSITY OF HAWAII AT MANOA  
SCHOOL OF OCEAN AND EARTH  
SCIENCE AND TECHNOLOGY

MARINE OPTION PROGRAM  
POSITION ORGANIZATION CHART

CHART IIIA

PROPOSED



\* To be reclassified

APPROVED BY THE UNIVERSITY  
BOARD OF REGENTS

MAR 15 1991

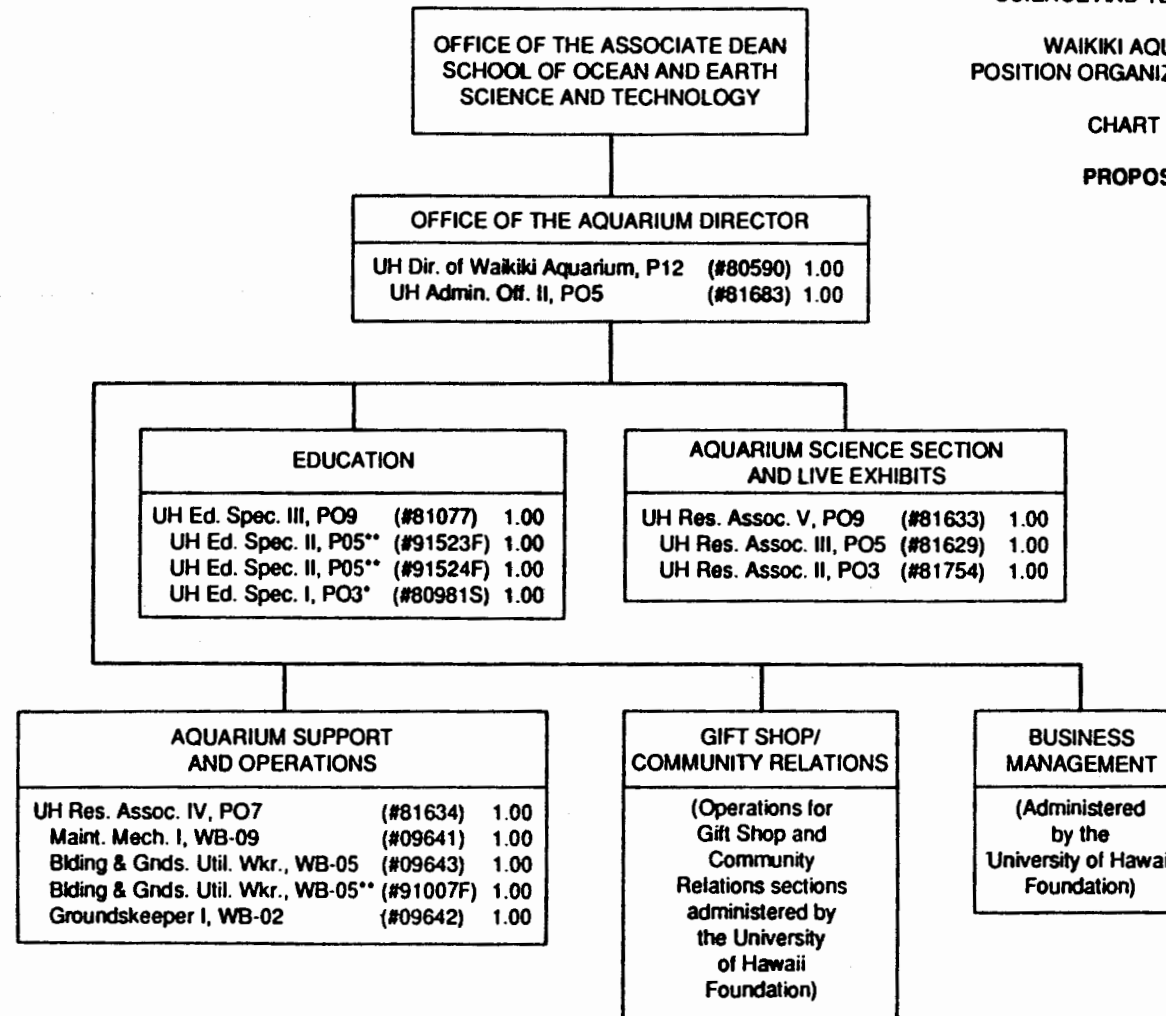
Date

STATE OF HAWAII  
UNIVERSITY OF HAWAII  
UNIVERSITY OF HAWAII AT MANOA  
SCHOOL OF OCEAN AND EARTH  
SCIENCE AND TECHNOLOGY

WAIKIKI AQUARIUM  
POSITION ORGANIZATION CHART

CHART IIIB

PROPOSED



\* Temporary  
\*\* To be established

APPROVED BY THE UNIVERSITY  
BOARD OF REGENTS

MAR 15 1991

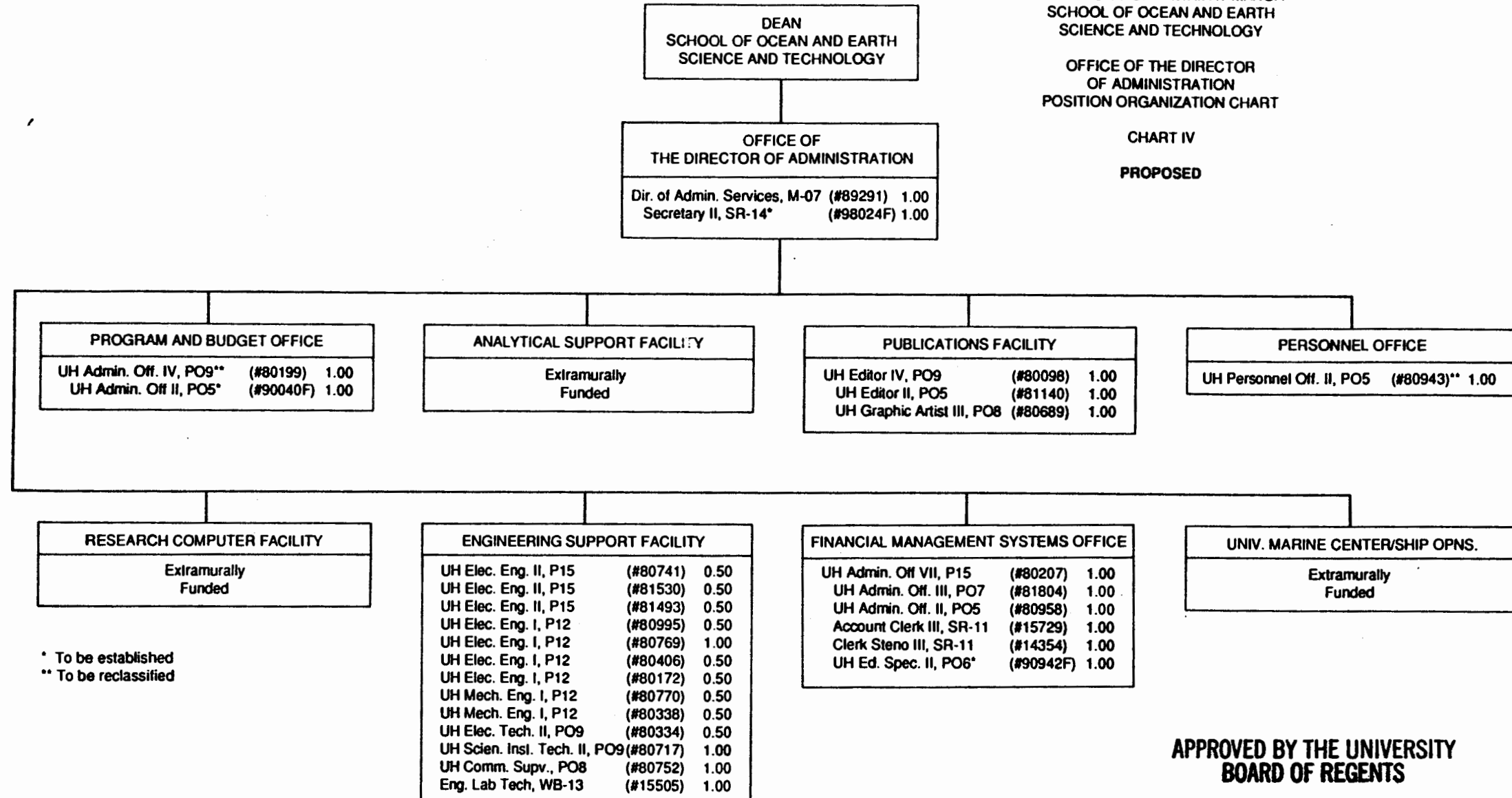
Date

STATE OF HAWAII  
UNIVERSITY OF HAWAII  
UNIVERSITY OF HAWAII AT MANOA  
SCHOOL OF OCEAN AND EARTH  
SCIENCE AND TECHNOLOGY

OFFICE OF THE DIRECTOR  
OF ADMINISTRATION  
POSITION ORGANIZATION CHART

CHART IV

PROPOSED



\* To be established  
\*\* To be reclassified

APPROVED BY THE UNIVERSITY  
BOARD OF REGENTS

MAR 15 1991

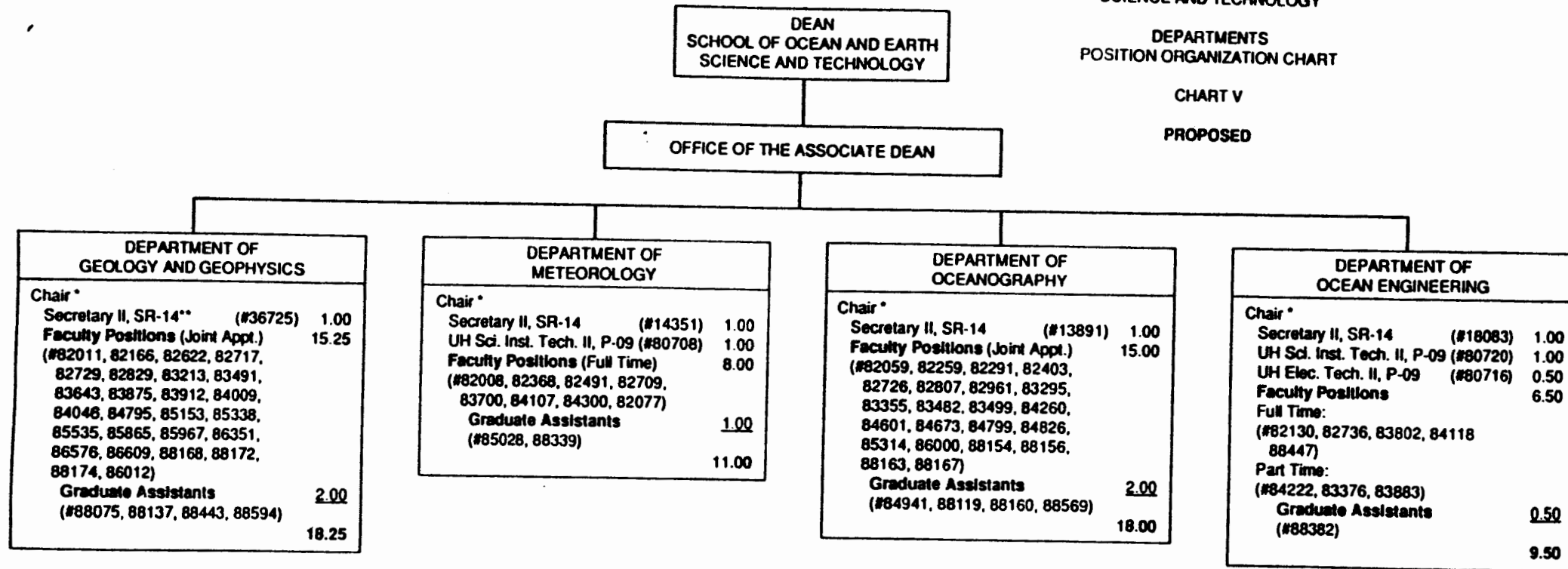
Date

STATE OF HAWAII  
UNIVERSITY OF HAWAII  
UNIVERSITY OF HAWAII AT MANOA  
SCHOOL OF OCEAN AND EARTH  
SCIENCE AND TECHNOLOGY

DEPARTMENTS  
POSITION ORGANIZATION CHART

CHART V

PROPOSED



\* Appointed from faculty positions

\*\* To be redescribed (transferred from HIG)

APPROVED BY THE UNIVERSITY  
BOARD OF REGENTS

MAR 15 1991

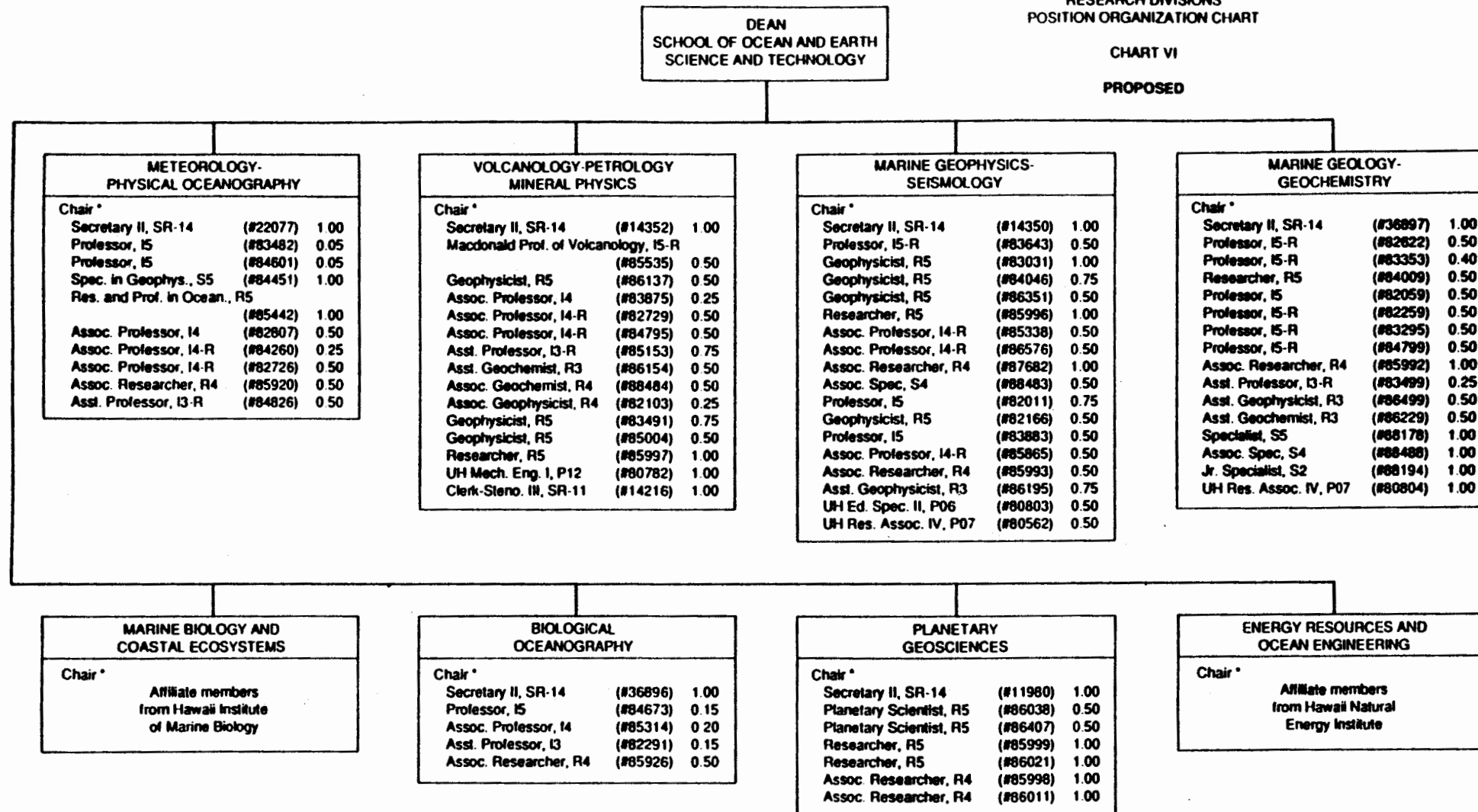
Date

STATE OF HAWAII  
UNIVERSITY OF HAWAII  
UNIVERSITY OF HAWAII AT MANOA  
SCHOOL OF OCEAN AND EARTH  
SCIENCE AND TECHNOLOGY

RESEARCH DIVISIONS  
POSITION ORGANIZATION CHART

CHART VI

PROPOSED



\* Appointed from faculty positions

APPROVED BY THE UNIVERSITY  
BOARD OF REGENTS

MAR 15 1991

Date

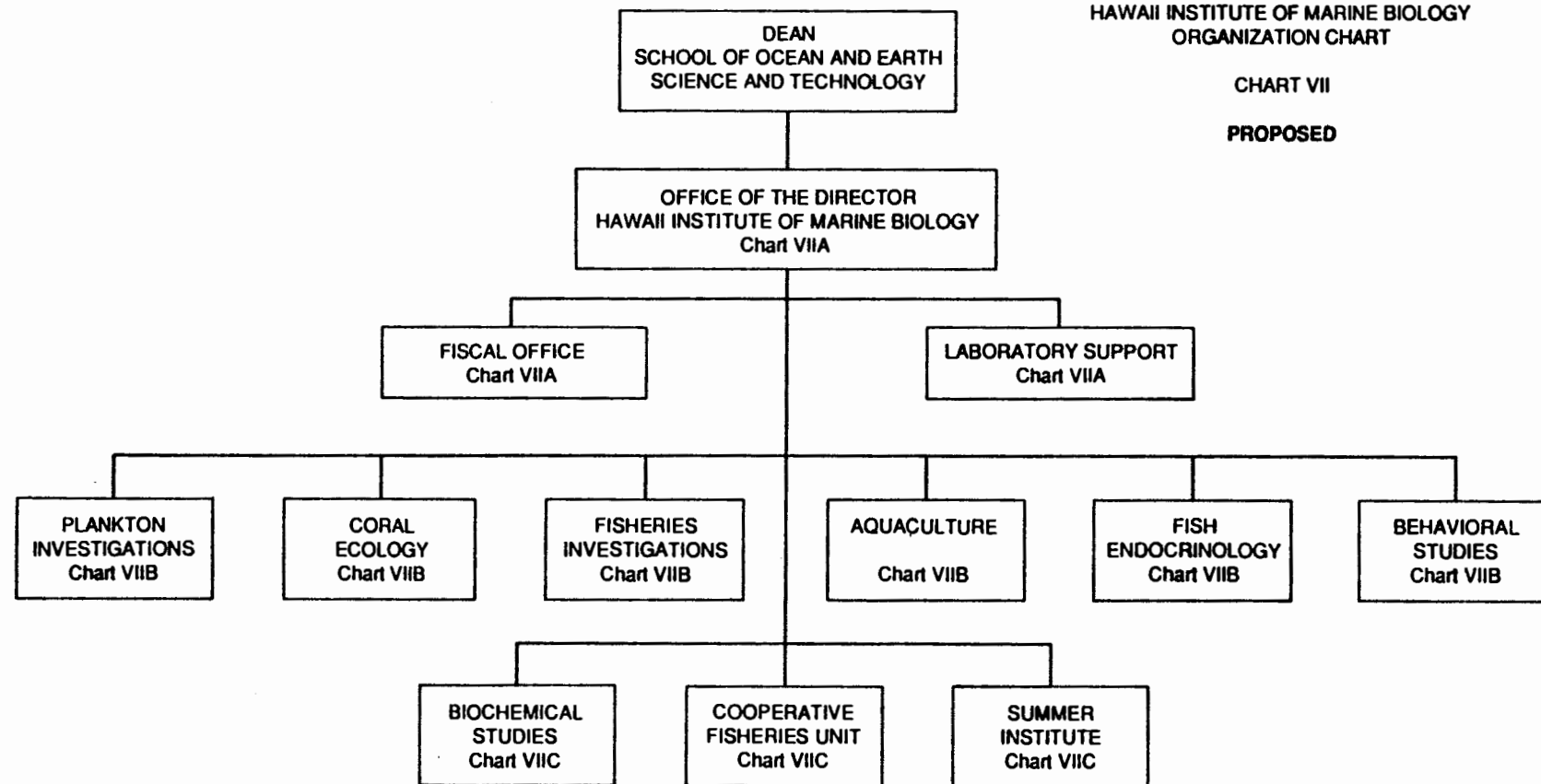


STATE OF HAWAII  
UNIVERSITY OF HAWAII  
UNIVERSITY OF HAWAII AT MANOA  
SCHOOL OF OCEAN AND EARTH  
SCIENCE AND TECHNOLOGY

HAWAII INSTITUTE OF MARINE BIOLOGY  
ORGANIZATION CHART

CHART VII

PROPOSED



APPROVED BY THE UNIVERSITY  
BOARD OF REGENTS

MAR 15 1991

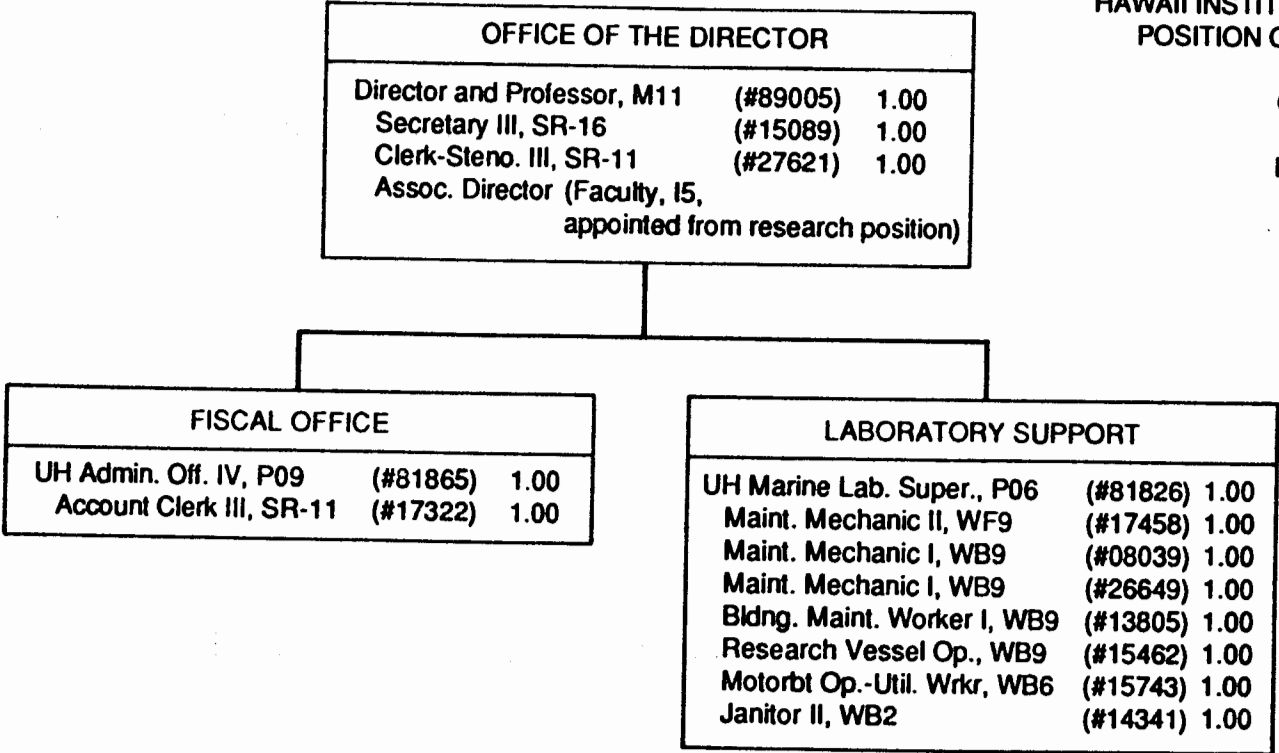
Date

STATE OF HAWAII  
UNIVERSITY OF HAWAII  
UNIVERSITY OF HAWAII AT MANOA  
SCHOOL OF OCEAN AND EARTH  
SCIENCE AND TECHNOLOGY

HAWAII INSTITUTE OF MARINE BIOLOGY  
POSITION ORGANIZATION CHART

CHART VIIA

PROPOSED



APPROVED BY THE UNIVERSITY  
BOARD OF REGENTS

MAR 15 1991

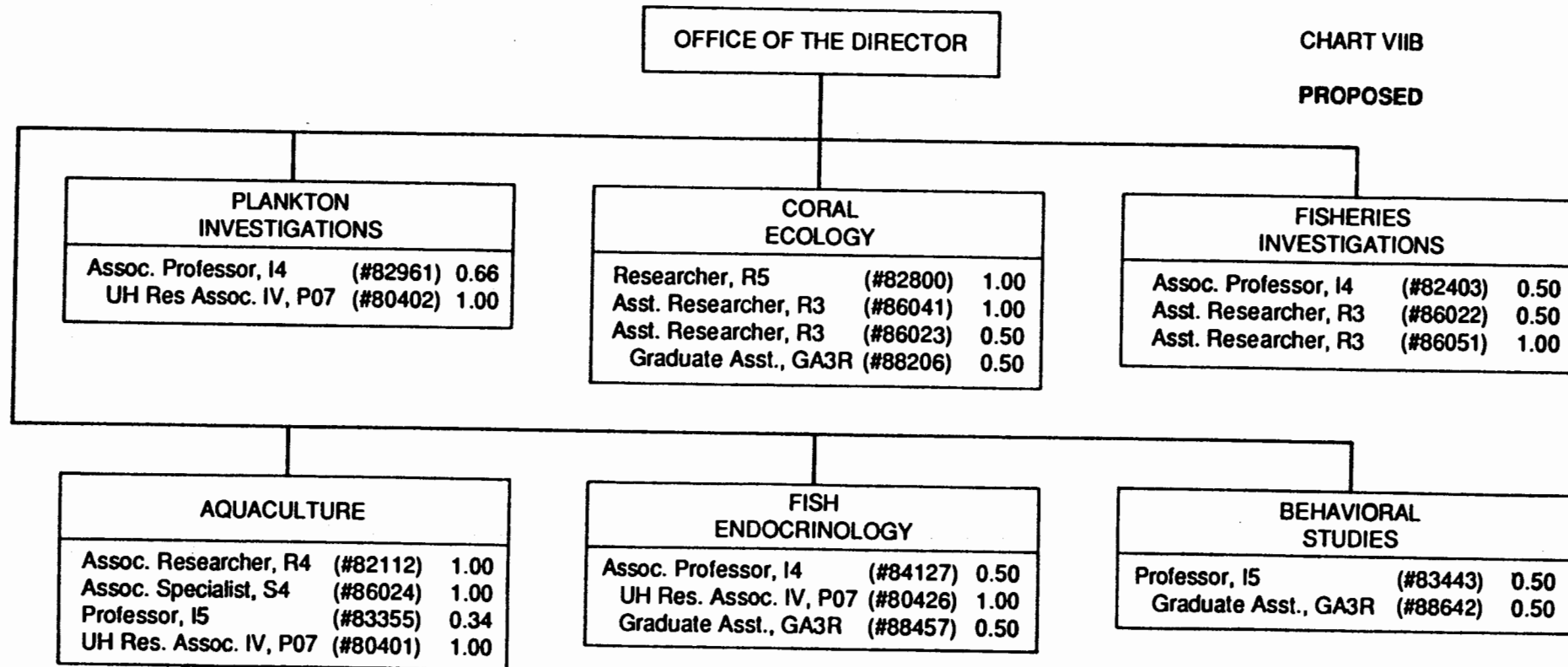
Date

STATE OF HAWAII  
UNIVERSITY OF HAWAII  
UNIVERSITY OF HAWAII AT MANOA  
SCHOOL OF OCEAN AND EARTH  
SCIENCE AND TECHNOLOGY

HAWAII INSTITUTE OF MARINE BIOLOGY  
POSITION ORGANIZATION CHART

CHART VIIB

PROPOSED



APPROVED BY THE UNIVERSITY  
BOARD OF REGENTS

MAR 15 1991

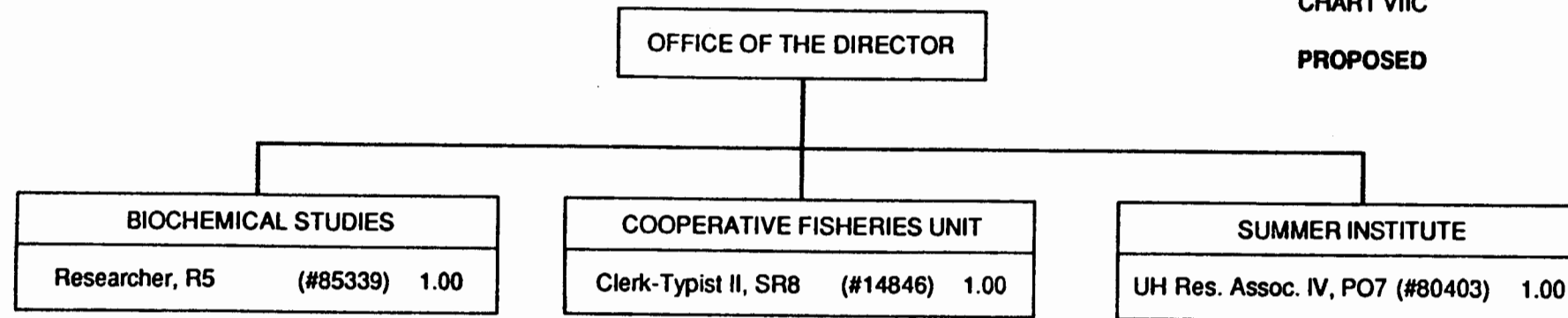
Date

STATE OF HAWAII  
UNIVERSITY OF HAWAII  
UNIVERSITY OF HAWAII AT MANOA  
SCHOOL OF OCEAN AND EARTH  
SCIENCE AND TECHNOLOGY

HAWAII INSTITUTE OF MARINE BIOLOGY  
POSITION ORGANIZATION CHART

CHART VIIC

PROPOSED



APPROVED BY THE UNIVERSITY  
BOARD OF REGENTS

MAR 15 1991

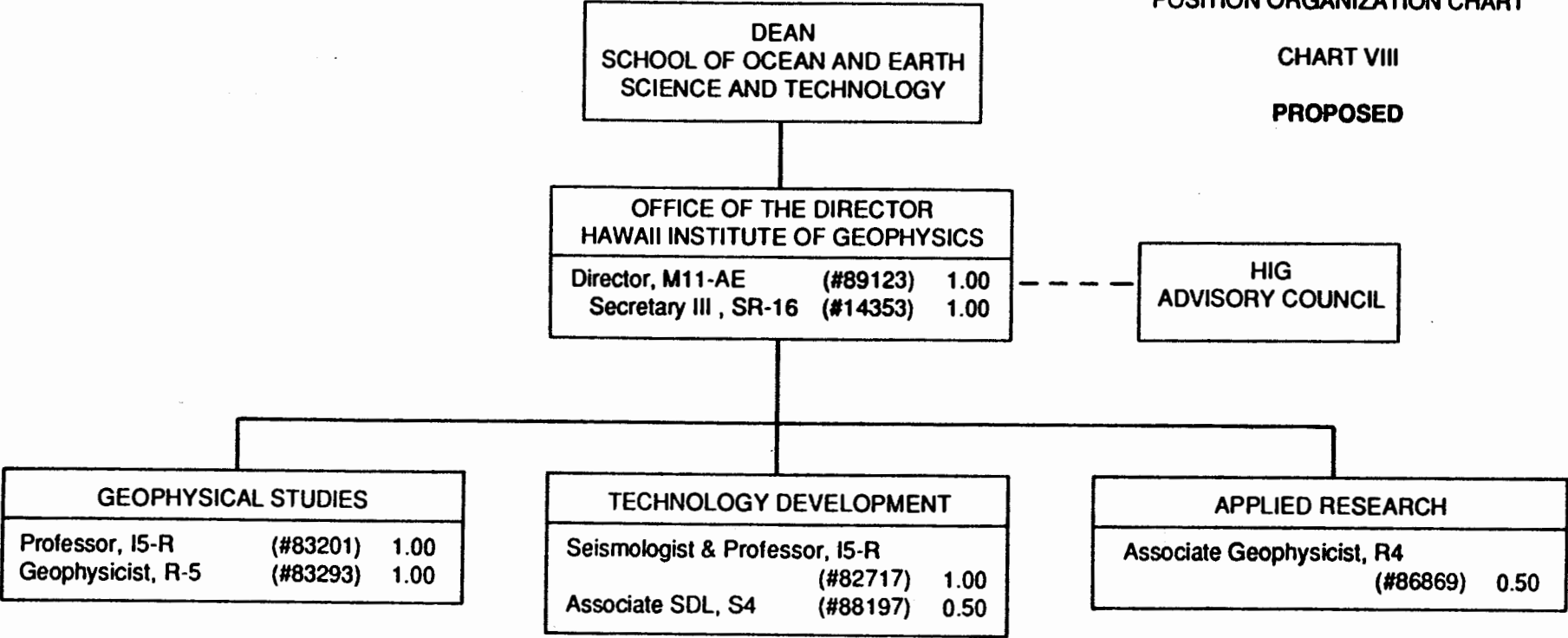
Date

STATE OF HAWAII  
UNIVERSITY OF HAWAII  
UNIVERSITY OF HAWAII AT MANOA  
SCHOOL OF OCEAN AND EARTH  
SCIENCE AND TECHNOLOGY

HAWAII INSTITUTE OF GEOPHYSICS  
POSITION ORGANIZATION CHART

CHART VIII

PROPOSED



APPROVED BY THE UNIVERSITY  
BOARD OF REGENTS

MAR 15 1991

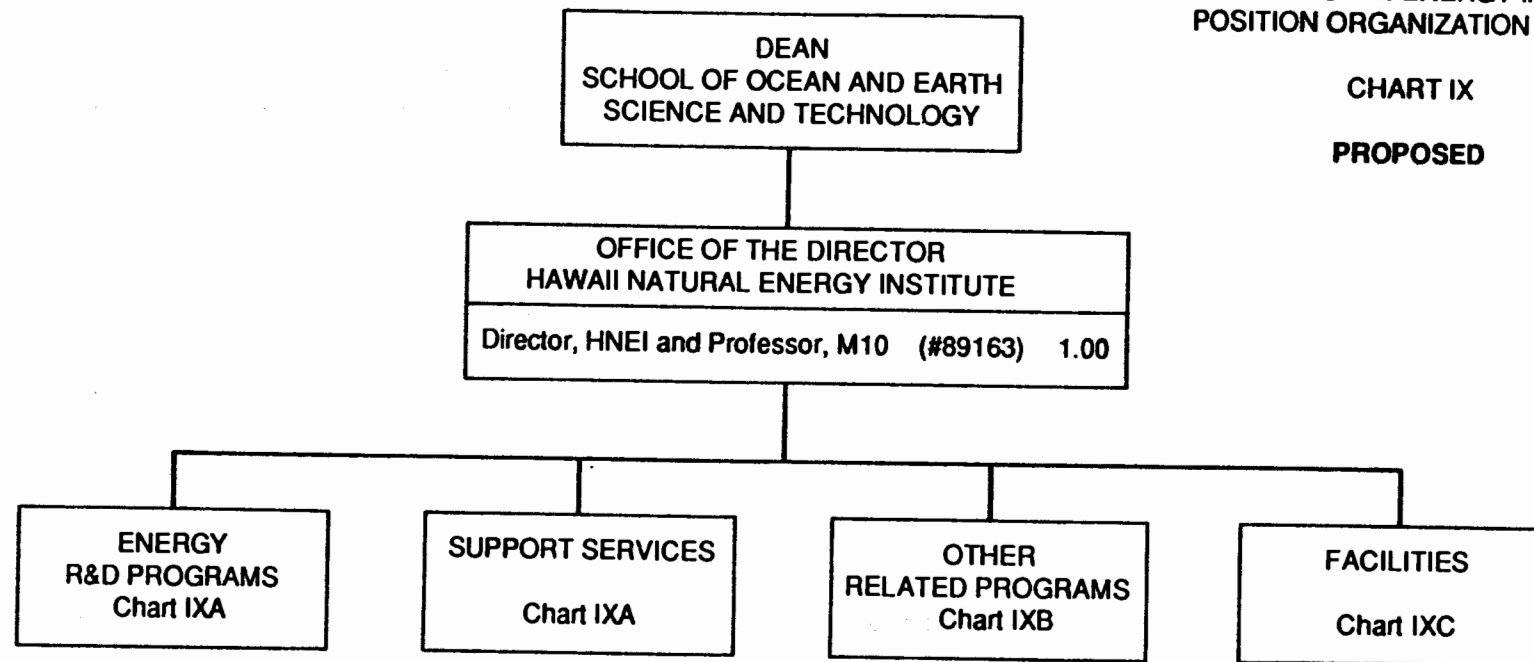
Date

STATE OF HAWAII  
UNIVERSITY OF HAWAII  
UNIVERSITY OF HAWAII AT MANOA  
SCHOOL OF OCEAN AND EARTH  
SCIENCE AND TECHNOLOGY

HAWAII NATURAL ENERGY INSTITUTE  
POSITION ORGANIZATION CHART

CHART IX

PROPOSED



APPROVED BY THE UNIVERSITY  
BOARD OF REGENTS

MAR 15 1991

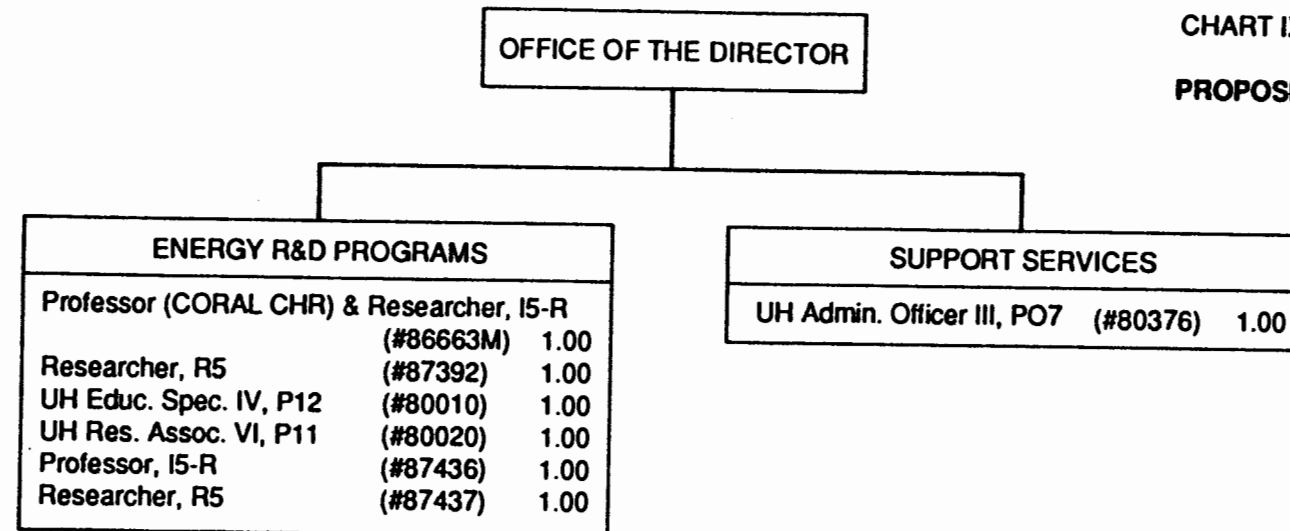
Date

STATE OF HAWAII  
UNIVERSITY OF HAWAII  
UNIVERSITY OF HAWAII AT MANOA  
SCHOOL OF OCEAN AND EARTH  
SCIENCE AND TECHNOLOGY

HAWAII NATURAL ENERGY INSTITUTE  
POSITION ORGANIZATION CHART

CHART IXA

PROPOSED



APPROVED BY THE UNIVERSITY  
BOARD OF REGENTS

MAR 15 1991

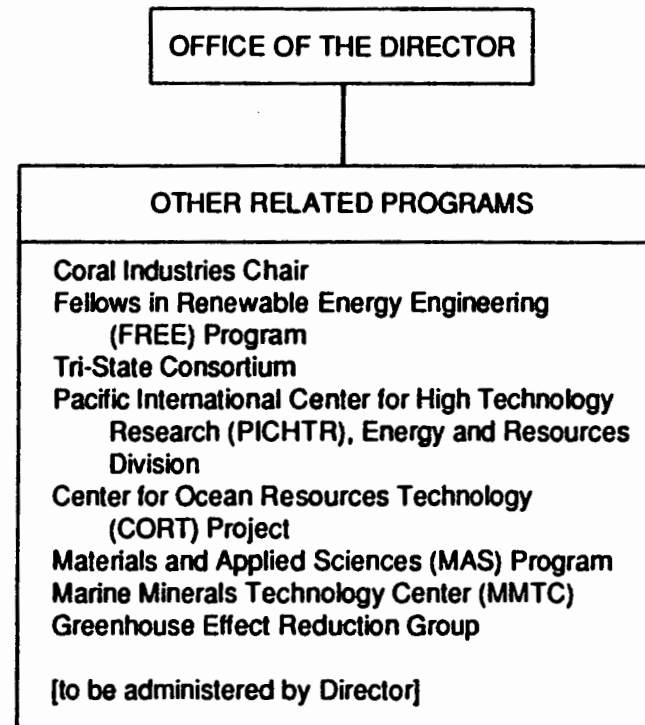
Date

STATE OF HAWAII  
UNIVERSITY OF HAWAII  
UNIVERSITY OF HAWAII AT MANOA  
SCHOOL OF OCEAN AND EARTH  
SCIENCE AND TECHNOLOGY

HAWAII NATURAL ENERGY INSTITUTE

CHART IXB

PROPOSED



APPROVED BY THE UNIVERSITY  
BOARD OF REGENTS

MAR 15 1991

Date

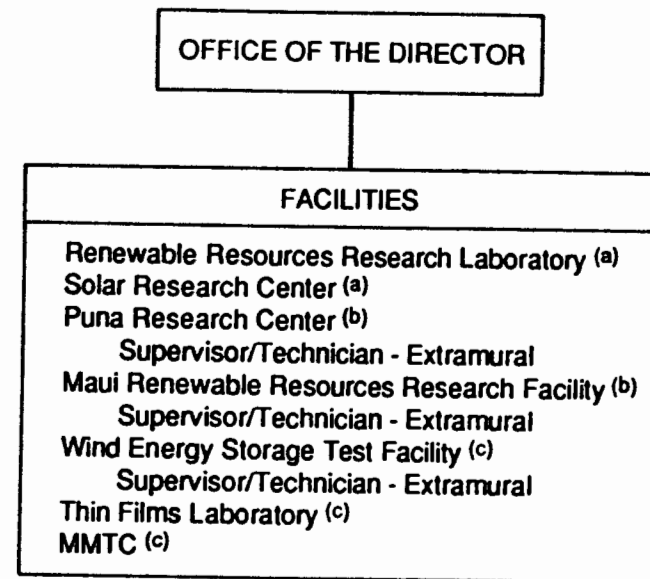


STATE OF HAWAII  
UNIVERSITY OF HAWAII  
UNIVERSITY OF HAWAII AT MANOA  
SCHOOL OF OCEAN AND EARTH  
SCIENCE AND TECHNOLOGY

HAWAII NATURAL ENERGY INSTITUTE

CHART IXC

PROPOSED



- (a) administered by Coral Chair  
(b) research supervisory role  
(c) administration and research supervisory role

APPROVED BY THE UNIVERSITY  
BOARD OF REGENTS

MAR 15 1991

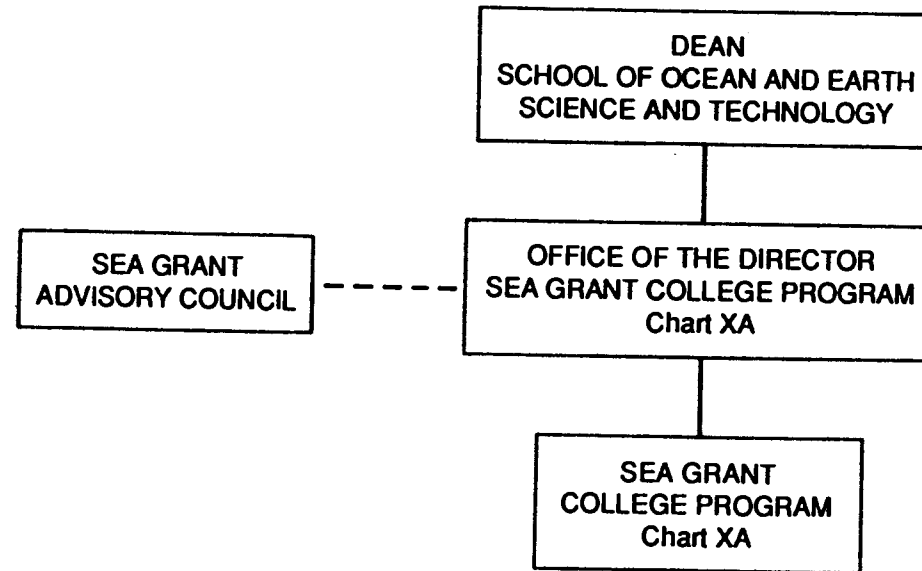
Date

STATE OF HAWAII  
UNIVERSITY OF HAWAII  
UNIVERSITY OF HAWAII AT MANOA  
SCHOOL OF OCEAN AND EARTH  
SCIENCE AND TECHNOLOGY

SEA GRANT COLLEGE PROGRAM  
ORGANIZATION CHART

CHART X

PROPOSED



APPROVED BY THE UNIVERSITY  
BOARD OF REGENTS

MAR 15 1991

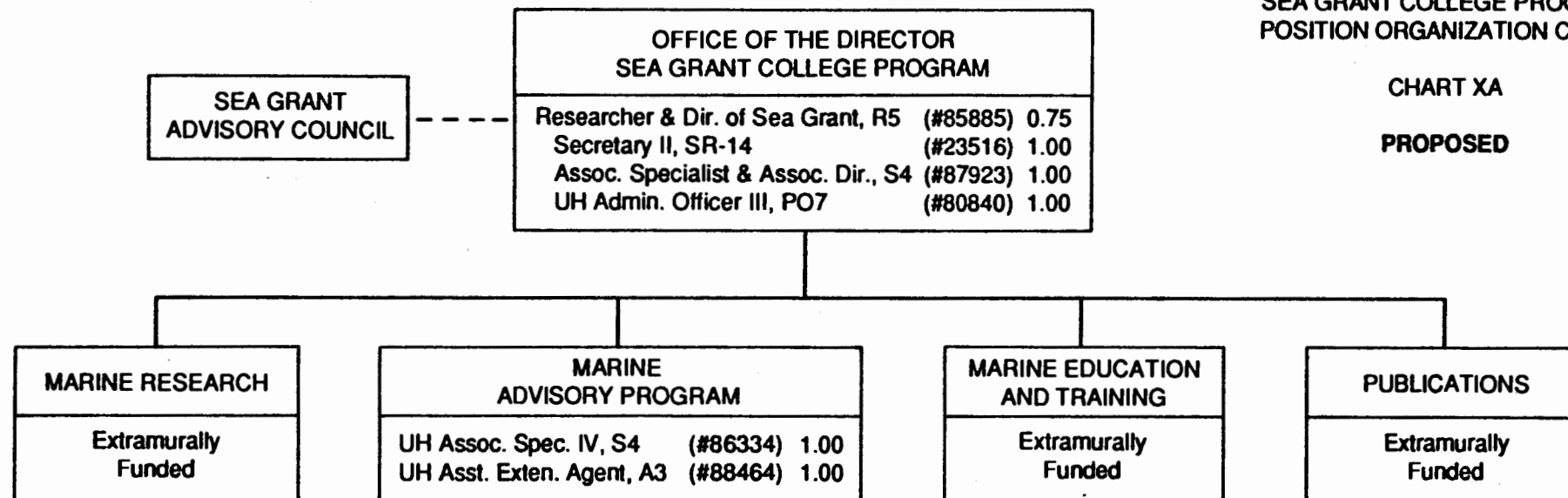
Date

STATE OF HAWAII  
UNIVERSITY OF HAWAII  
UNIVERSITY OF HAWAII AT MANOA  
SCHOOL OF OCEAN AND EARTH  
SCIENCE AND TECHNOLOGY

SEA GRANT COLLEGE PROGRAM  
POSITION ORGANIZATION CHART

CHART XA

PROPOSED



APPROVED BY THE UNIVERSITY  
BOARD OF REGENTS

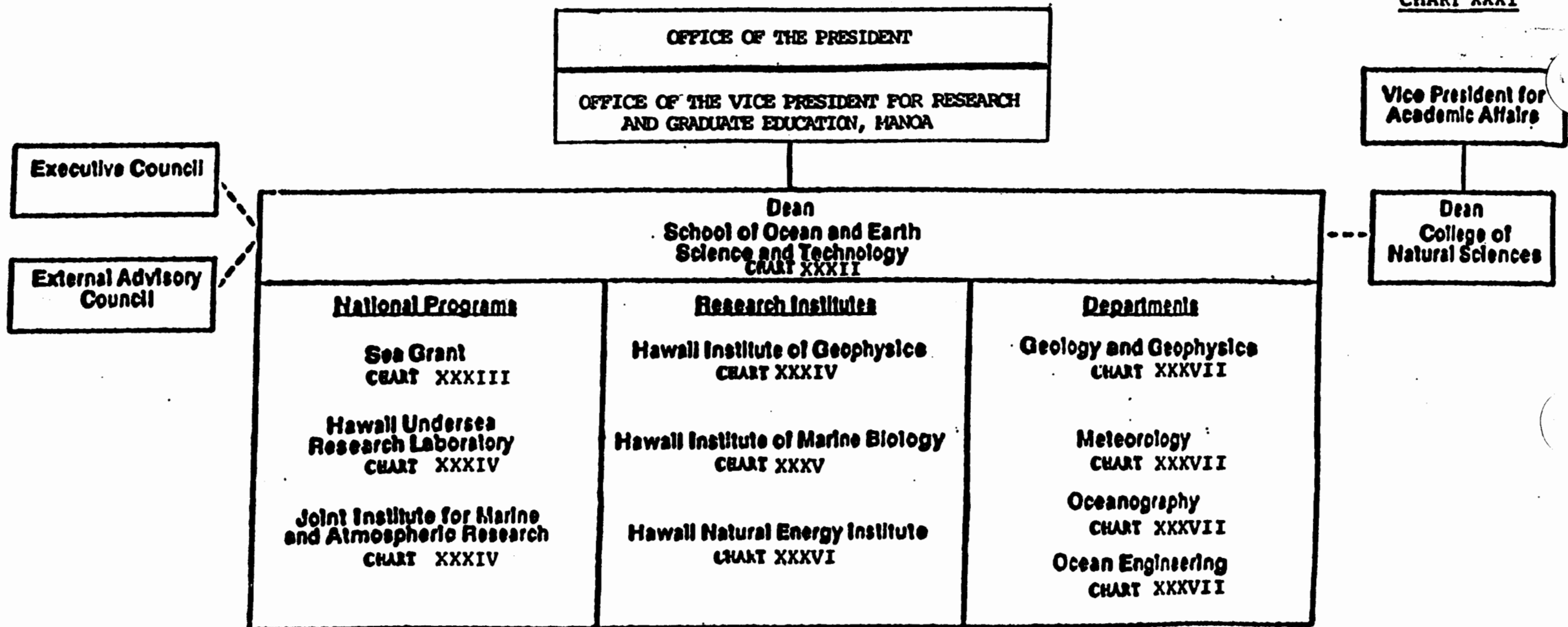
MAR 15 1991

Date

STATE OF HAWAII  
UNIVERSITY OF HAWAII

UNIVERSITY OF HAWAII AT MANOA  
SCHOOL OF OCEAN AND EARTH  
SCIENCE AND TECHNOLOGY

ORGANIZATION CHART  
CHART XXXI



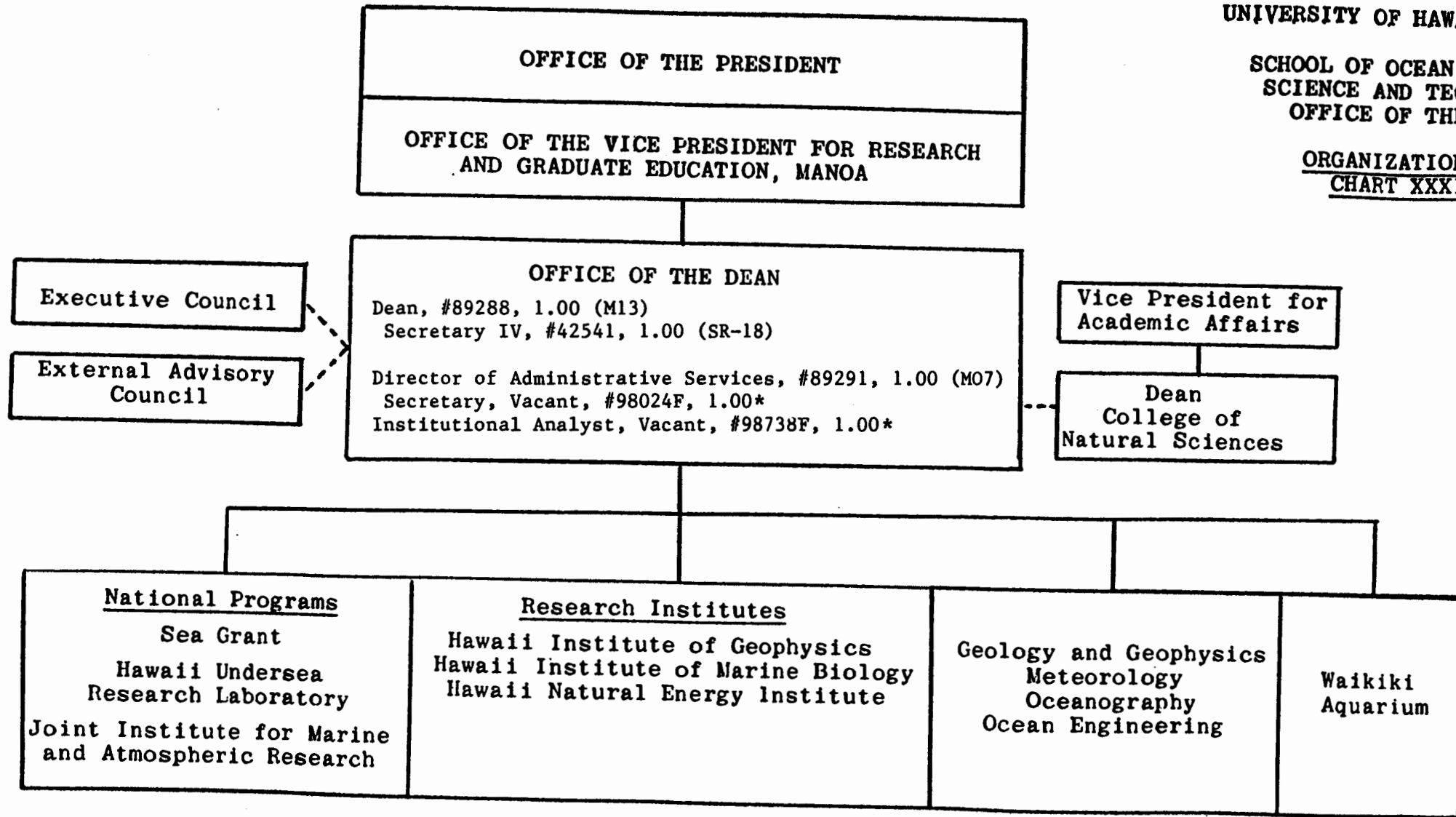
SUPERSEDED  
Reorg. 3/15/91

**CHART UPDATED**  
DATE JUN 30 1990

STATE OF HAWAII  
UNIVERSITY OF HAWAII  
UNIVERSITY OF HAWAII AT MANOA

SCHOOL OF OCEAN AND EARTH  
SCIENCE AND TECHNOLOGY  
OFFICE OF THE DEAN

ORGANIZATION CHART  
CHART XXXII



\*TBE - to be established

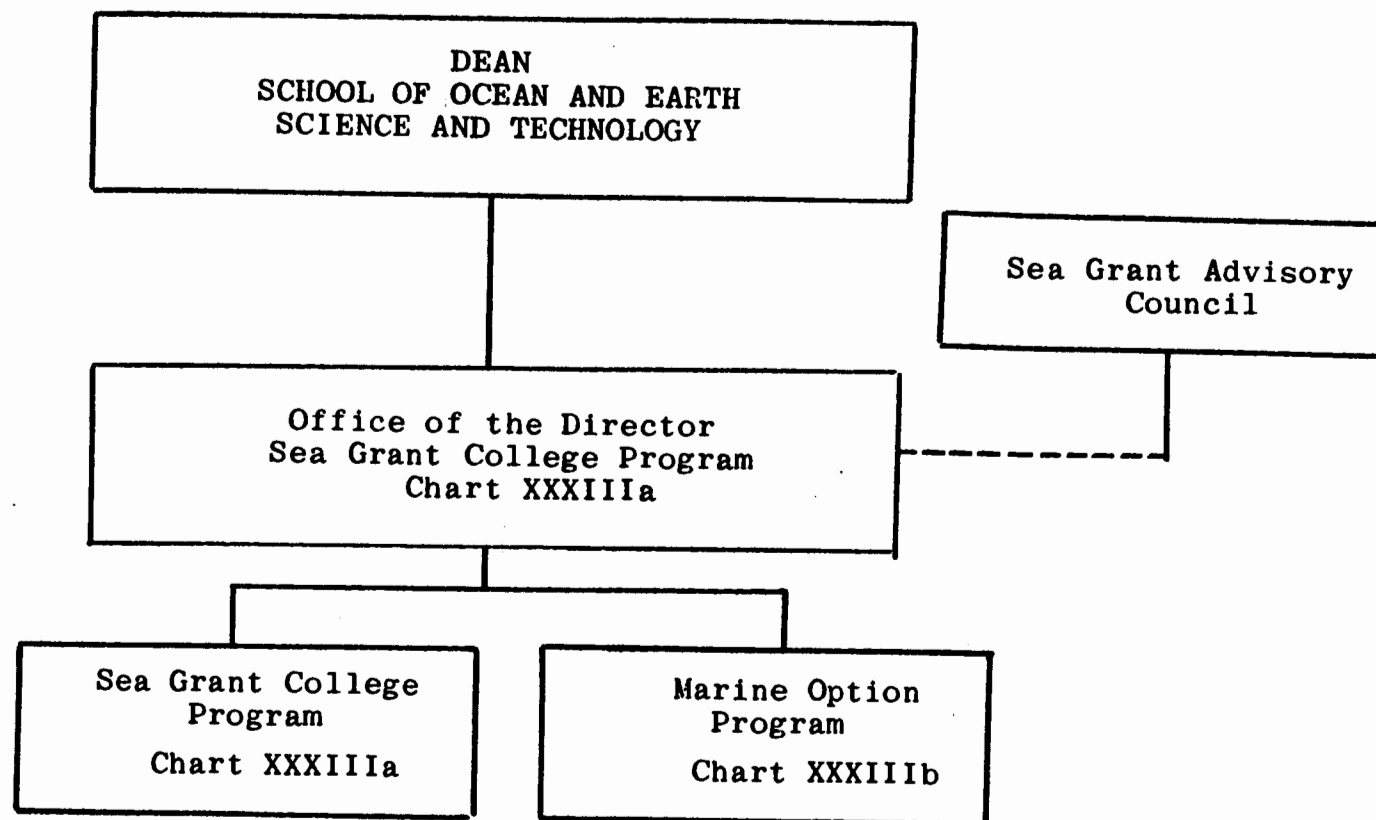
SUPERSEDED  
REORG. 3/15/91

**CHART UPDATED**  
**JUN 30 1990**  
DATE \_\_\_\_\_

STATE OF HAWAII  
UNIVERSITY OF HAWAII

UNIVERSITY OF HAWAII AT MANOA  
SEA GRANT COLLEGE PROGRAM

ORGANIZATION CHART  
CHART XXXIII



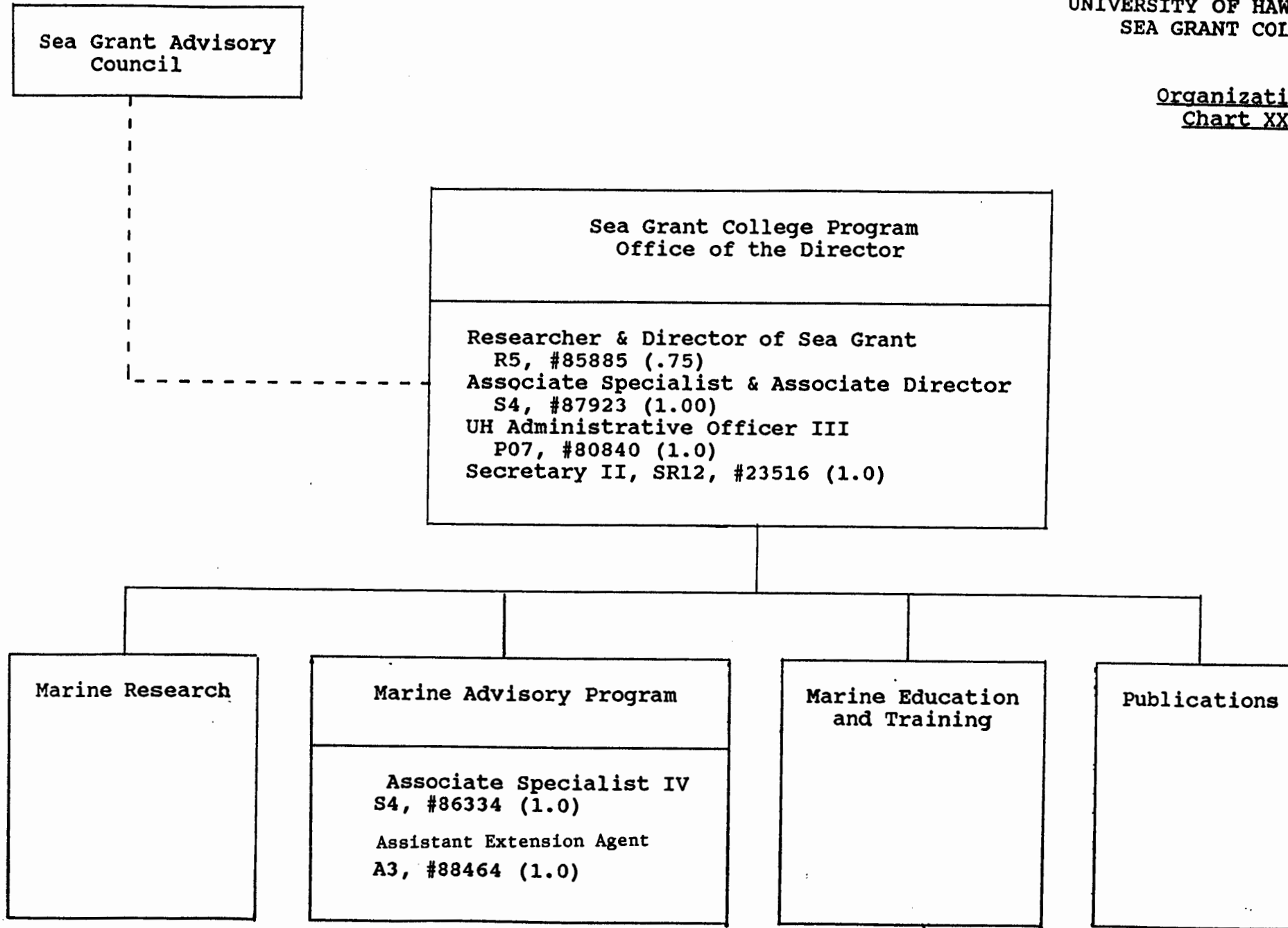
SUPERSEDED  
REORG. 3/15/91

CHART UPDATED  
DATE JUN 30 1990

STATE OF HAWAII  
UNIVERSITY OF HAWAII

UNIVERSITY OF HAWAII AT MANOA  
SEA GRANT COLLEGE PROGRAM

Organization Chart  
Chart XXXIII-A



SUPERSEDED

REORG. 3/15/91

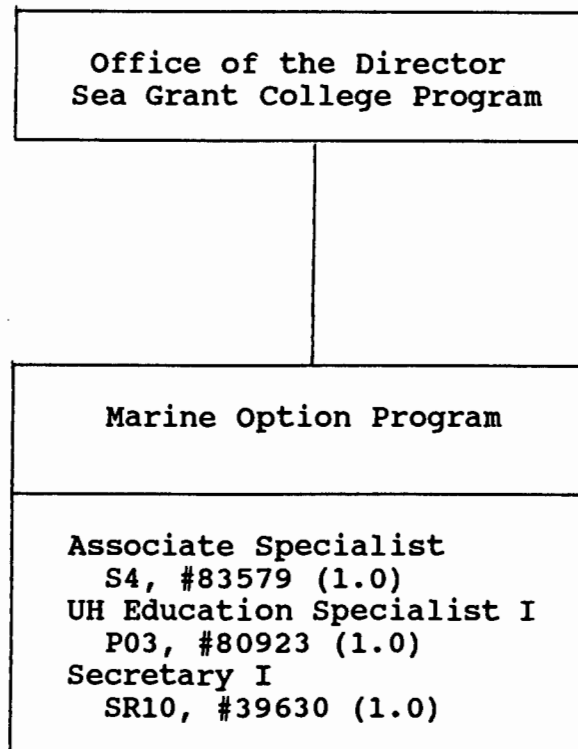
**CHART UPDATED**

DATE **JUN 20 1991**

STATE OF HAWAII  
UNIVERSITY OF HAWAII

UNIVERSITY OF HAWAII AT MANOA  
SEA GRANT COLLEGE PROGRAM  
MARINE OPTION PROGRAM

Organization Chart  
Chart XXXIII-B



SUPERSEDED  
REORG. 3/15/91

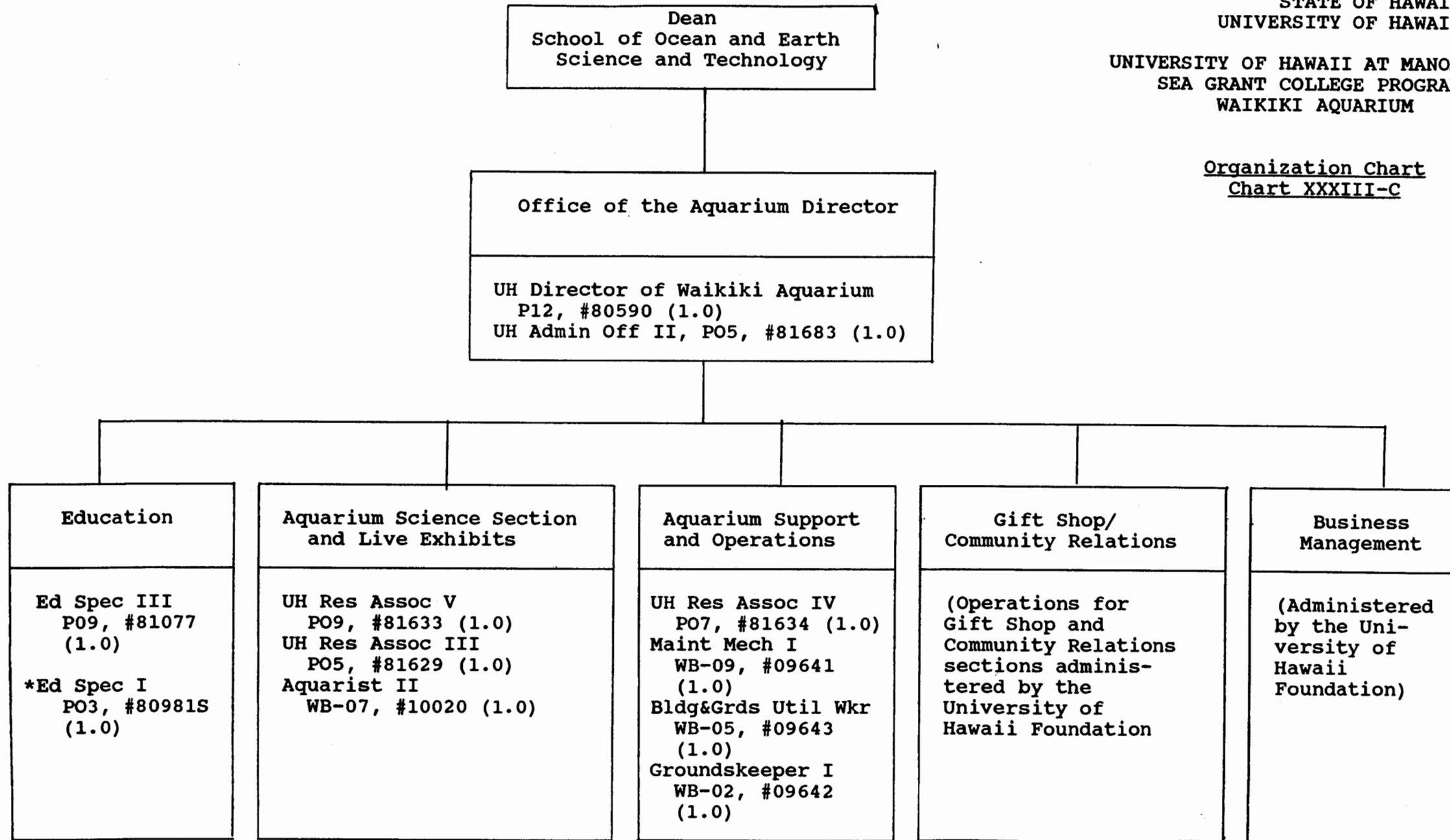
CHART UPDATED  
DATE JUN 30 1990



STATE OF HAWAII  
UNIVERSITY OF HAWAII

UNIVERSITY OF HAWAII AT MANOA  
SEA GRANT COLLEGE PROGRAM  
WAIKIKI AQUARIUM

Organization Chart  
Chart XXXIII-C



\*Temporary

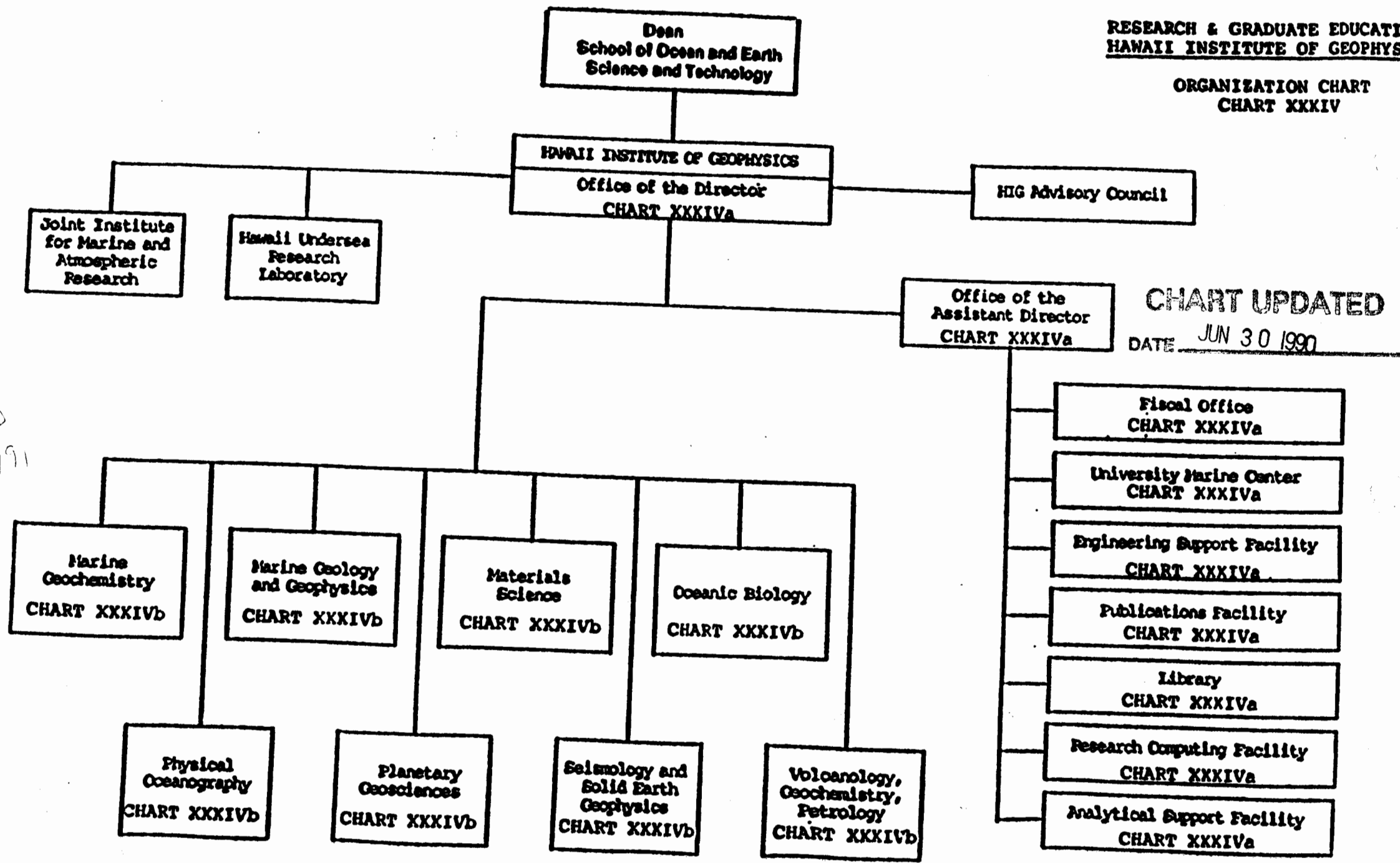
SUPER SEDED  
REORG. 3/15/91

CHART UPDATED  
JUN 30 1990  
DATE \_\_\_\_\_

STATE OF HAWAII  
UNIVERSITY OF HAWAII  
UNIVERSITY OF HAWAII AT MANO

RESEARCH & GRADUATE EDUCATION  
HAWAII INSTITUTE OF GEOPHYSICS

ORGANIZATION CHART  
CHART XXXIV



SUPERSEDED  
Reorg. 3/15/91

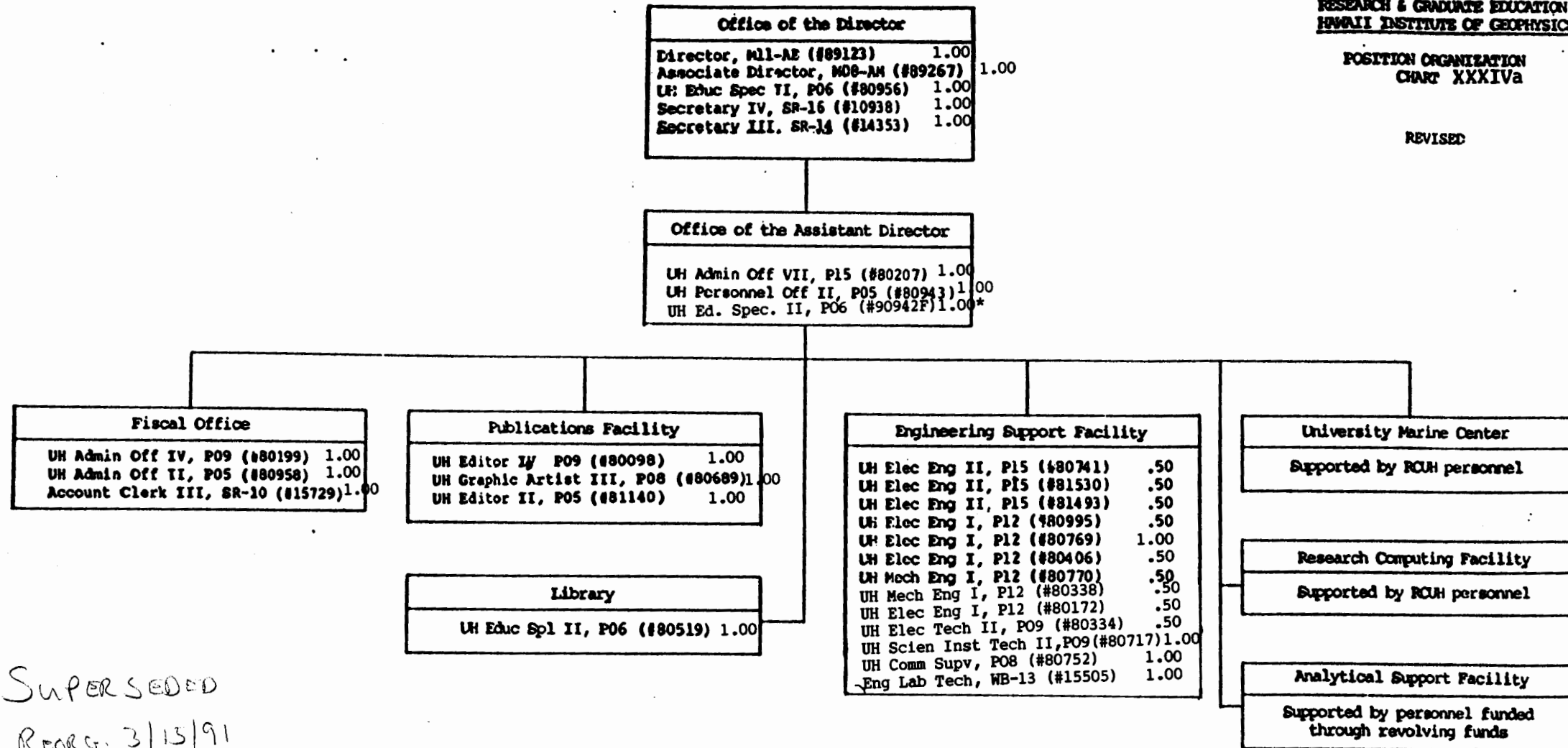
CHART UPDATED  
DATE JUN 30 1990

STATE OF HAWAII  
UNIVERSITY OF HAWAII  
UNIVERSITY OF HAWAII AT MANOA

RESEARCH & GRADUATE EDUCATION  
HAWAII INSTITUTE OF GEOPHYSICS

POSITION ORGANIZATION  
CHART XXXIVa

REVISED



SUPERSEDED  
Reorg. 3/13/91

\*TBE - to be established

CHART UPDATED  
DATE JUN 30 1990

POSITION ORGANIZATION  
CHART XXXIVb

REVISED

Office of  
the Director

Joint Institute for Marine  
and Atmospheric Research

3 faculty shown in  
research divisions

Hawaii Undersea Research  
Laboratory

3 faculty shown in  
research divisions

Marine Geochemistry

Professor, I5 (#82059)	0.50
*Professor, I5-R (#82259)	0.50
Professor, I5-R (#83295)	0.50
Professor, I5-R (#84799)	0.50
Researcher, R5 (#88194)	1.00
Assoc Researcher, R4 (#86459)+	
Assoc Researcher, I4 (#85992)	1.00
Asst Professor, I3-R (#83499)	0.25
Asst Geophysicist, R3 (#86499)	0.50
Asst Geochemist, R3 (#86229)	0.50
Asst Researcher, R3 (#87514)+	
Asst Researcher, R3 (#87653)+	
Asst Geochemist, R3 (#86948)+	
Asst Geochemist, R3 (#86383)+	
Assoc. Spec., S4 (#88488)	1.00
UH Res. Assoc. IV, PO7 (#80804)	1.00
UH Ed. Spec. IV, P12 (#99555F)	1.00**
Secretary II, SR-12 (#36897)	1.00
(Affiliated faculty - 1)+	

(Affiliated faculty - 1)+

Marine Geology & Geophysics

Professor, I5-R (#83643)	0.50
Professor, I5-R (#83353)	0.40
Geophysicist, R5 (#83031)	1.00
Geophysicist, R5 (#83293)	1.00
Geophysicist, R5 (#84046)	1.00
Geophysicist, R5 (#86351)	0.50
Researcher, R5 (#95996)	1.00
Assoc. Specialist S-4 (#88197)	0.50
Assoc Professor, I4-R (#82622)	0.50
Assoc Professor, I4-R (#85338)	0.50
Assoc Professor, I4-R (#86576)	0.50
Assoc Geophysicist, R4 (#86869)	0.50
Assoc Geophysicist, R4 (#86637)+	
Assoc Geologist, R4 (#86504)+	
Assoc Researcher, R4 (#85965)+	
Assoc Researcher, R4 (#84009)	0.50
Assoc Researcher, R4 (#87682)	1.00
Asst Geophysicist, R3 (#87269)+	
Assoc. Spec., S4 (#88483)	0.50
UH Ed. Spec. II, PO6 (#80803)	0.50
UH Res. Assoc. IV, PO7 (#80562)	0.50
Clerk-Steno III, SR-11 (#14354)	1.00
Clerk-Typist II, SR-08 (#90040F)	1.00**

Materials Science

*Geophysicist, R5 (#83491)	0.75
Geophysicist, R5 (#85004)	0.50
Researcher, R5 (#85997)	1.00
UH Mech Eng I, P12 (#80782)	1.00
Clerk-Steno III, SR-11 (#14216)	1.00
(Affiliated faculty - 4)++	

Oceanic Biology

Professor, I5 (#84673)	0.15
*Assoc Professor, I4 (#85314)	0.20
Asst Professor, I3 (#82291)	0.15
Asst Researcher, R3 (#86350)+	
Asst Oceanographer, R3 (#86906)+	
Asst Researcher, R3 (#85845)+	
Secretary II, SR-12 (#36725)	1.00
(Affiliated faculty - 1)++	

Physical Oceanography

Professor, I5 (#83482)	0.50
Professor, I5 (#84601)	0.50
Spec in Geophys, R5 (#84451)	1.00
Res & Prof of Ocean, R5 (#85442)	1.00
*Assoc Professor, I4 (#82807)	0.50
Assoc Professor, I4-R (#84260)	0.25
Assoc Professor, I4-R (#82726)	0.50
Assoc Researcher, R4 (#85920)	0.50
Asst Professor, I3-R (#84826)	0.50
Asst Researcher, R3 (#87491)+	
Asst Researcher, R3 (#86976)+	
Secretary II, SR-12 (#36896)	1.00
(Affiliated faculty - 1)++	

Planetary Geosciences

Planetary Scientist, R5 (#86038)	0.50
Planetary Scientist, R5 (#86407)	0.50
Researcher, R5 (#95999)	1.00
Researcher, R5 (#86021)	1.00
Assoc Scientist, R4 (#85493)+	
Assoc Planetary Scientist, R4 (#86635)+	
Assoc Researcher, R4 (#86301)+	
Assoc Researcher, R4 (#85998)	1.00
Assoc Researcher, R4 (#86011)	1.00
Asst Researcher, R3 (#87147)+	
Asst Researcher, R3 (#87193)+	
UH Admin Ofc III, PO7 (#81804)	1.00

Seismology & Solid Earth Geophysics

Professor, I5 (#82011)	0.75
Geophysicist, R5 (#82166)	0.50
Seismologist & Prof, I5-R (#82717)	0.50
Professor, I5-R (#83201)	1.00
Prof of Ocean Engrg, I5 (#83883)	0.50
Assoc Geophysicist, R4 (#82103)	0.25
Assoc Professor, I4-R (#85865)	0.50
Assoc Geophysicist, R4 (#86395)+	
*Assoc Seismologist, R4 (#84468)+	
Assoc Researcher, R4 (#85993)	0.50
Asst Geophysicist, R3 (#86195)	0.50
Secretary II, SR-12 (#14350)	1.00
(Affiliated faculty - 2)++	

Volcanology, Geochemistry, Petrology

Macdonald Professor of Volcanology, I5-R, (#85535)	0.50
Geophysicist, R5 (#86137)	0.50
Assoc Professor, I4 (#83875)	0.25
Assoc Professor, I4-R (#82729)	0.50
*Assoc Professor, I4-R (#84795)	0.50
Assoc Researcher, R4 (#85926)	0.50
Asst Professor, I3-R (#85153)	0.75
Asst Geochemist, R3 (#86154)	0.50
Assoc. Geochemist, R4 (#88484)	0.50
Secretary II, SR-12 (#14352)	1.00
(Affiliated faculty - 1)++	

- \* Indicates current division chairman
- + Researcher supported from extramural funds
- ++ Researcher for whom HIG provides monetary, administrative or facilities support
- \*\* TBE = To be established

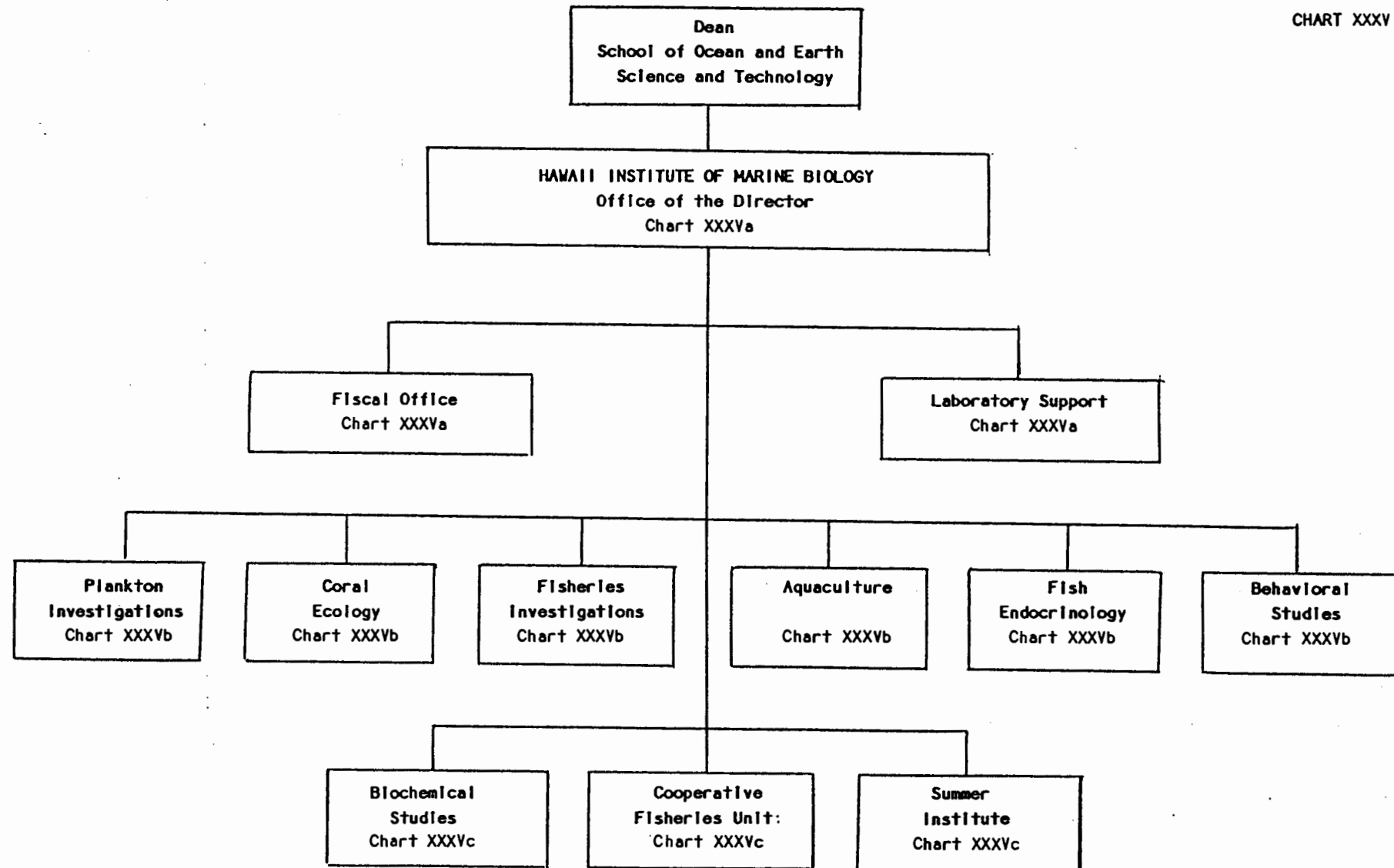
SUPERSEDED

Reorg. 3/15/91

CHART UPDATED

DATE JUN 30 1990

CHART XXXV



SUPERSEDED

3/15/91

**CHART UPDATED**

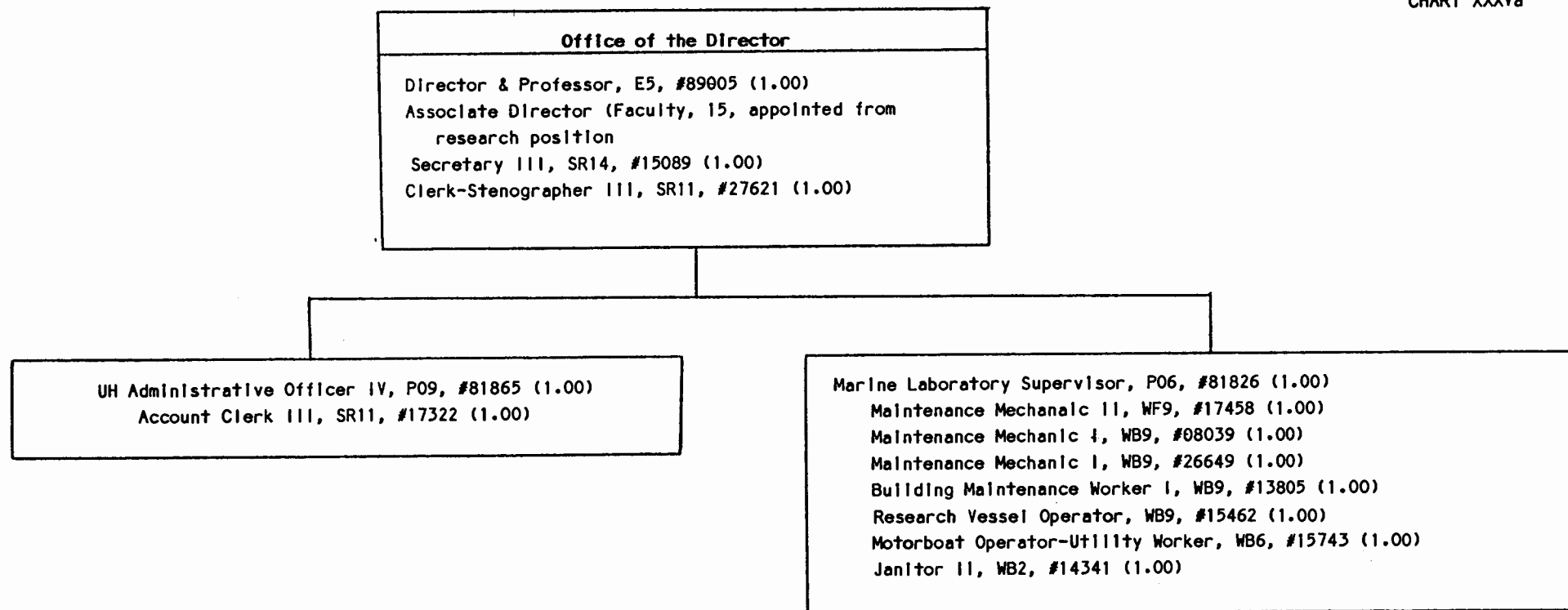
DATE JUN 30 1990

STATE OF HAWAII  
UNIVERSITY OF HAWAII AT MANOA  
HAWAII INSTITUTE OF MARINE BIOLOGY

Office of the Director

Position Organization Chart

CHART XXXVa



SUPERSEDED  
REORG. 3/15/91

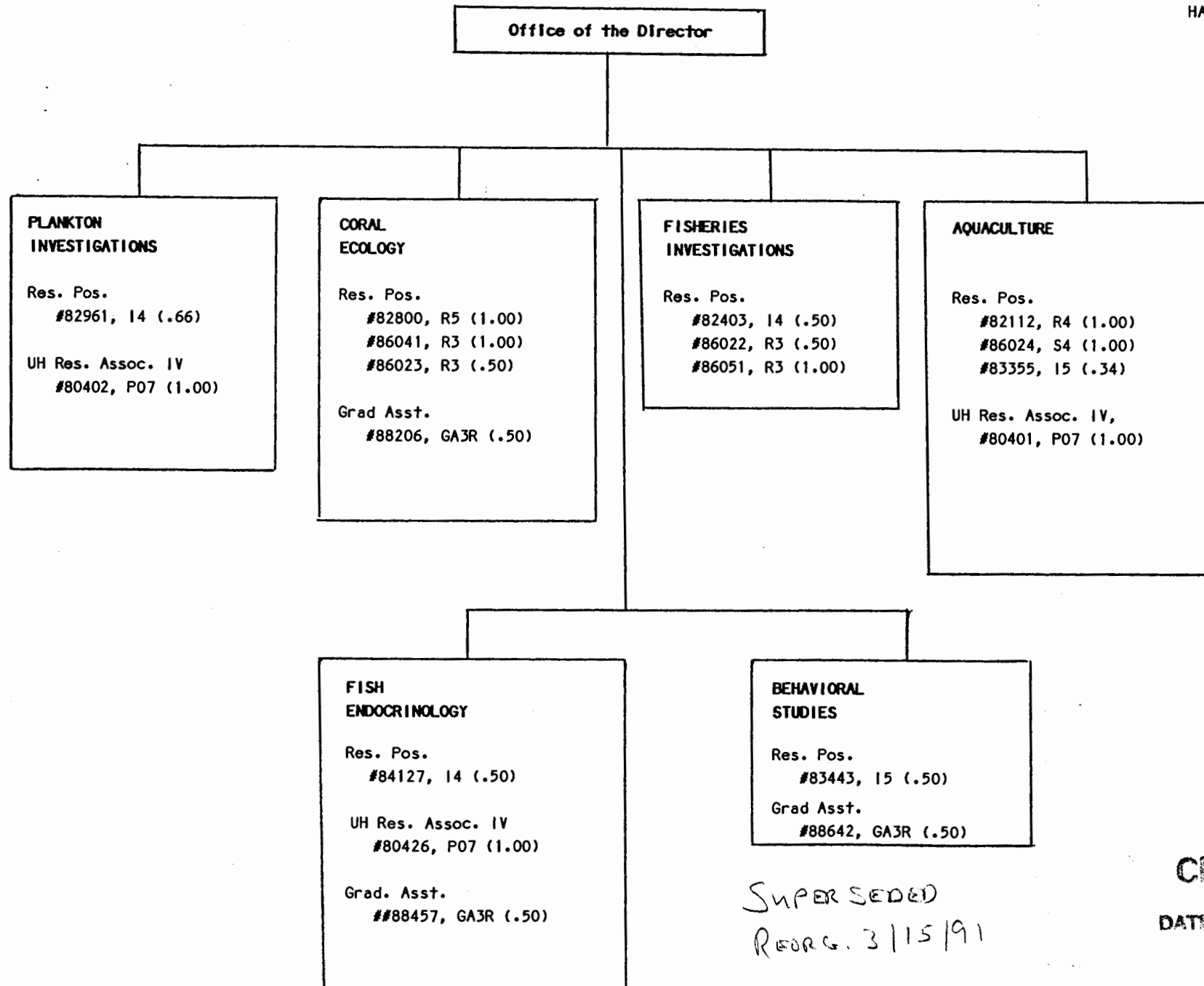
**CHART UPDATED**

DATE JUN 30 1990

STATE OF HAWAII  
UNIVERSITY OF HAWAII AT MANOA  
HAWAII INSTITUTE OF MARINE BIOLOGY

Organization Chart

CHART XXXVb



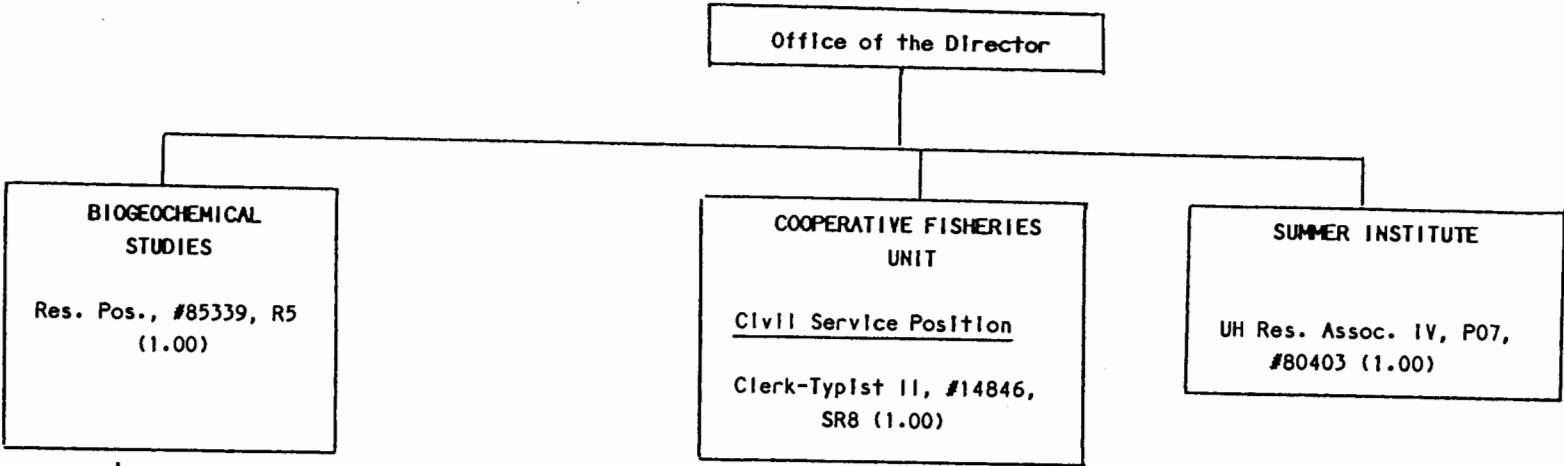
SUPERSEDED  
REORG. 3/15/91

CHART UPDATED  
JUN 30 1990  
DATE \_\_\_\_\_

STATE OF HAWAII  
UNIVERSITY OF HAWAII AT MANOA  
HAWAII INSTITUTE OF MARINE BIOLOGY

Organization Chart

CHART XXXVc



SUPERSEDED

REORG. 3/15/91

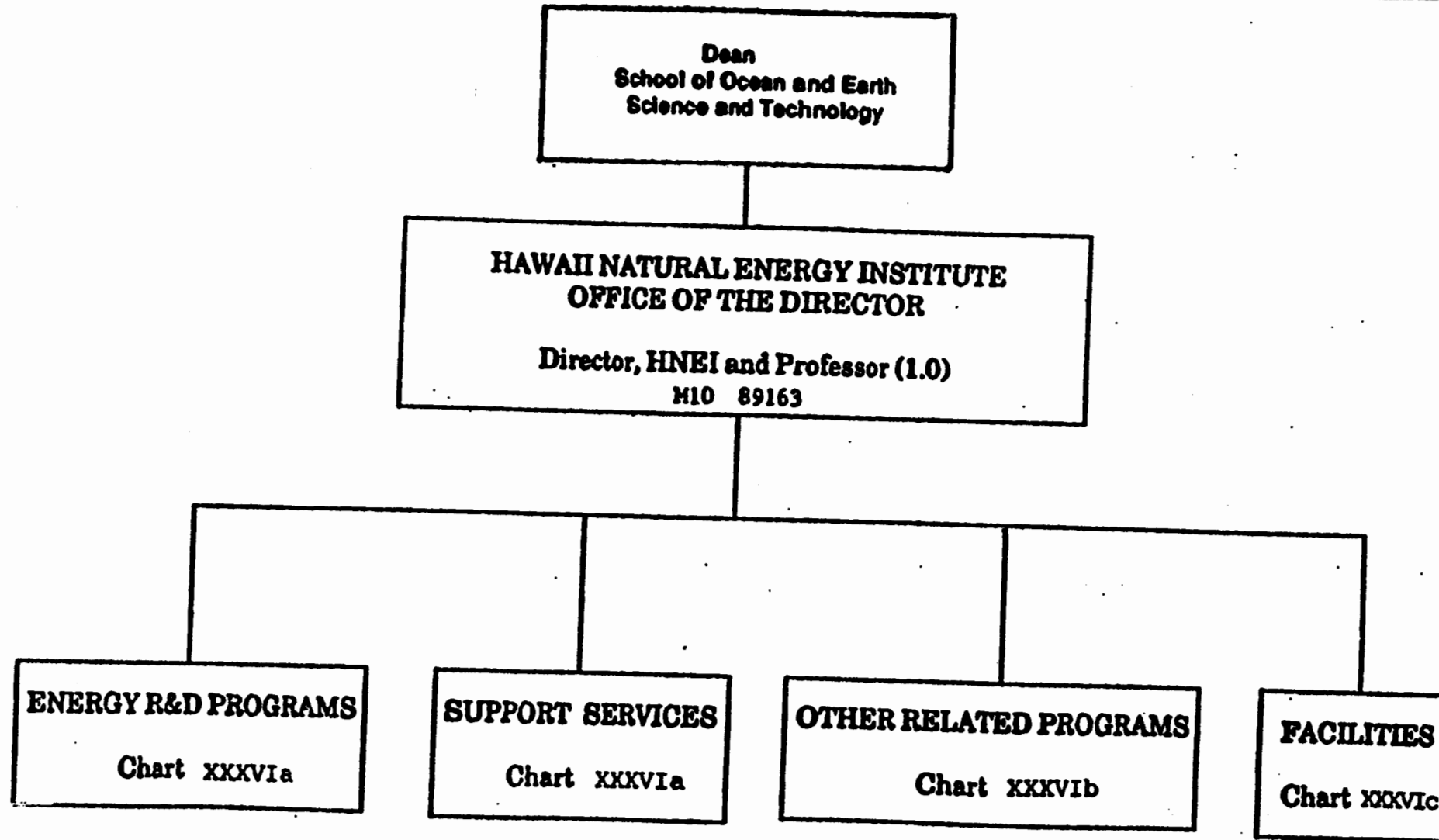
**CHART UPDATED**  
DATE JUN 30 1990



UNIVERSITY OF HAWAII

UNIVERSITY OF HAWAII AT MANOA  
HAWAII NATURAL ENERGY INSTITUTE

ORGANIZATION CHART  
CHART XXXVI



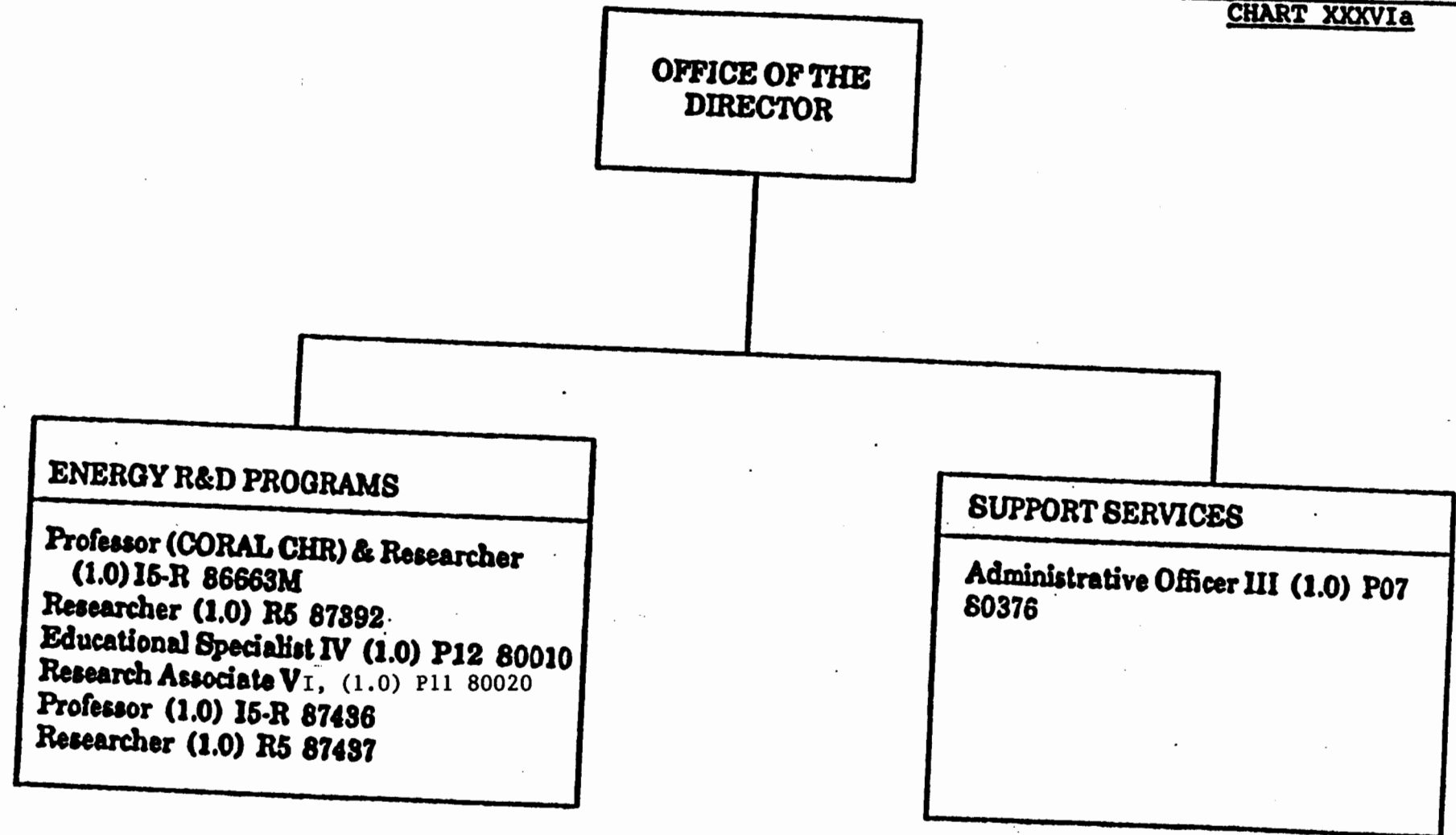
SUPERSEDED  
REORG. 3/15/91

**CHART UPDATED**  
JUN 30 1990  
DATE \_\_\_\_\_

STATE OF HAWAII  
UNIVERSITY OF HAWAII

UNIVERSITY OF HAWAII AT MANOA  
HAWAII NATURAL ENERGY INSTITUTE

ORGANIZATION CHART  
CHART XXXVIA



SUPERSEDED

REORG. 3/15/91

**CHART UPDATED**

DATE JUN 30 1990

STATE OF HAWAII  
UNIVERSITY OF HAWAII

UNIVERSITY OF HAWAII AT MANOA  
HAWAII NATURAL ENERGY INSTITUT

ORGANIZATION CHART  
CHART XXXVIb

OFFICE OF THE  
DIRECTOR

**OTHER RELATED PROGRAMS**

Coral Industries Chair  
Fellows in Renewable Energy Engineering  
(FREE) Program  
Tri-State Consortium  
Pacific International Center for High Technology  
Research (PICHTR), Energy and Resources  
Division  
Center for Ocean Resources Technology  
(CORT) Project  
Materials and Applied Sciences (MAS) Program  
Marine Minerals Technology Center (MMTC)  
Greenhouse Effect Reduction Group

[to be administered by Director]

SUPERSEDED

REORG. 3/15/91

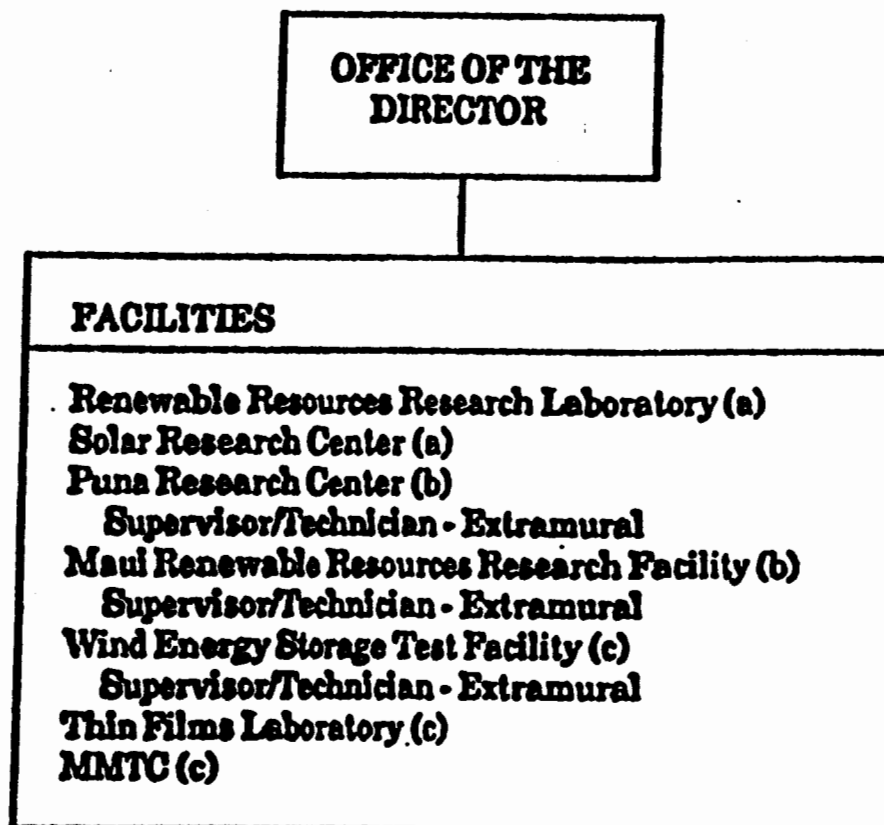
**CHART UPDATED**

DATE JUN 30 1990

STATE OF HAWAII  
UNIVERSITY OF HAWAII

UNIVERSITY OF HAWAII AT MANOA  
HAWAII NATURAL ENERGY INSTITUTE

ORGANIZATION CHART  
CHART XXXVIC



- (a) Administered by Coral Chair  
(b) Research supervisory role  
(c) Administration & research supervisory role

SUPERSEDED  
REORC. 3/15/91

CHART UPDATED  
JUN 30 1990  
DATE \_\_\_\_\_

DEPARTMENTS  
ORGANIZATION CHART  
CHART XXXVII

DEAN  
SCHOOL OF OCEAN AND EARTH  
SCIENCE AND TECHNOLOGY

DEPARTMENT OF GEOLOGY AND GEOPHYSICS	DEPARTMENT OF METEOROLOGY	DEPARTMENT OF OCEANOGRAPHY	DEPARTMENT OF OCEAN ENGINEERING
Chair (appointed from faculty positions)	Chair (appointed from faculty positions)	Chair (appointed from faculty positions)	Chair (appointed from faculty positions)
Secretary II, SR-12, #11980 1.00	Secretary II, SR-12, #14351 1.00	Secretary II, SR-12, #13891 1.00	Secretary II, SR-12, #18083 1.00
<u>Faculty Positions (Joint Appt.)</u> 15.25	Scientific Inst. Tech. II, P-09, #80708 1.00	<u>Faculty Positions (Joint Appt.)</u> 15.00	Scientific Inst. Tech. II, P-09, #80720 1.00
#82011, 82166, 82622, 82717, 82729, 82829, 83213, 83491, 83643, 83875, 83912, 84009, 84046, 84795, 85153, 85338, 85535, 85865, 85967, 86351, 86576, 86609, 88168, 88172, 88174, 86012	<u>Faculty Positions (Full Time)</u> 8.00	#82059, 82259, 82291, 82403, 82726, 82807, 82961, 83295, 83355, 83482, 83499, 84260, 84601, 84673, 84799, 84826, 85314, 86000, 88154, 88156, 88163, 88167	Electronics Tech. II, P-09, #80716
<u>Graduate Assistants</u>	<u>Graduate Assistants</u>	<u>Graduate Assistants</u>	<u>Faculty Positions</u> 6.50
#88075, 88137, 88443, 88594 2.00	#85028, 88339 1.00	#84941, 88119, 88160, 88569 2.00	Full Time: #82130, 82736, 83802, 84118, 84447
18.25	11.00	18.00	Part-Time: #84222, 83376, 83883
			<u>Graduate Assistants</u> .50
			#88382 9.50

SUPERSEDED

REORG. 3/15/91

CHART UPDATED  
DATE JUN 30 1990