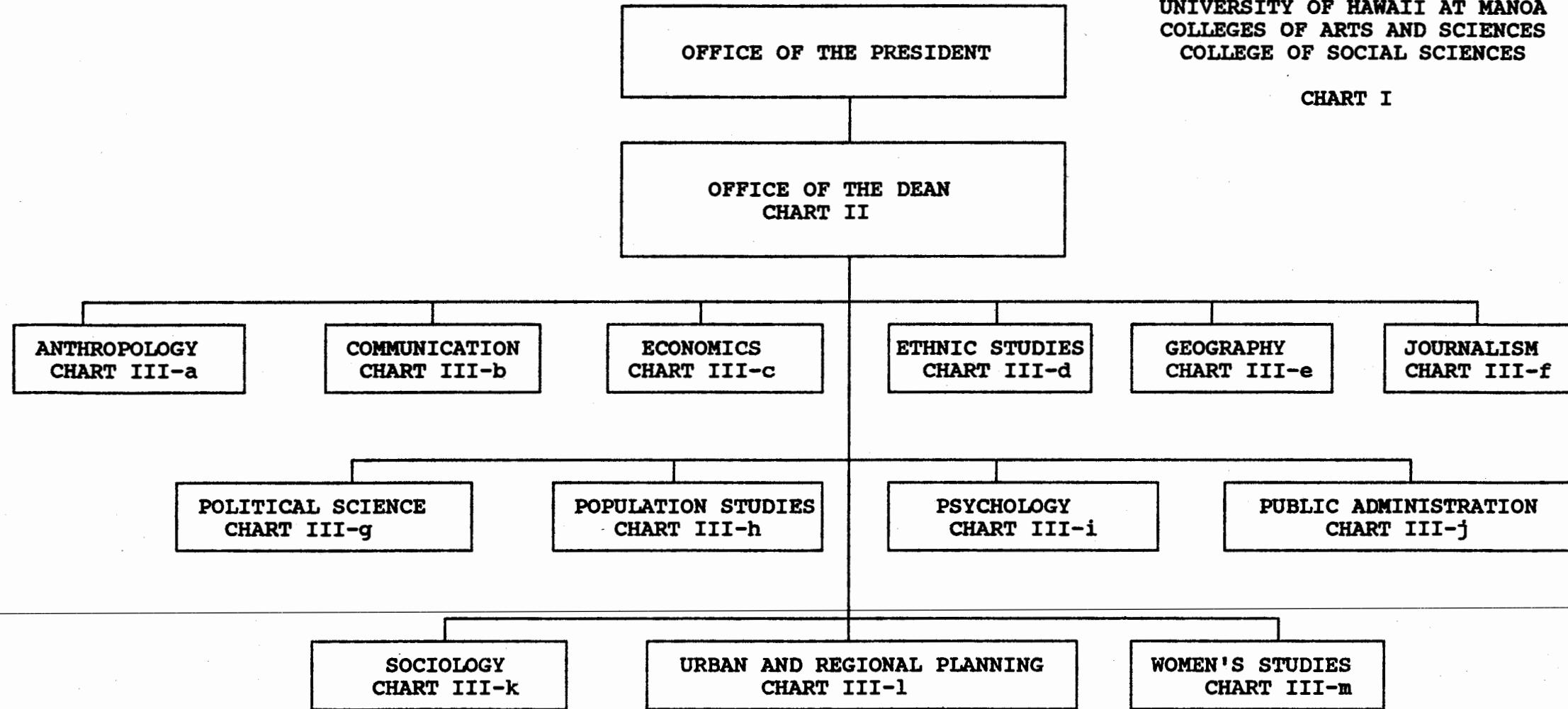


STATE OF HAWAII
UNIVERSITY OF HAWAII
UNIVERSITY OF HAWAII AT MANOA
COLLEGES OF ARTS AND SCIENCES
COLLEGE OF SOCIAL SCIENCES

CHART I



APPROVED:

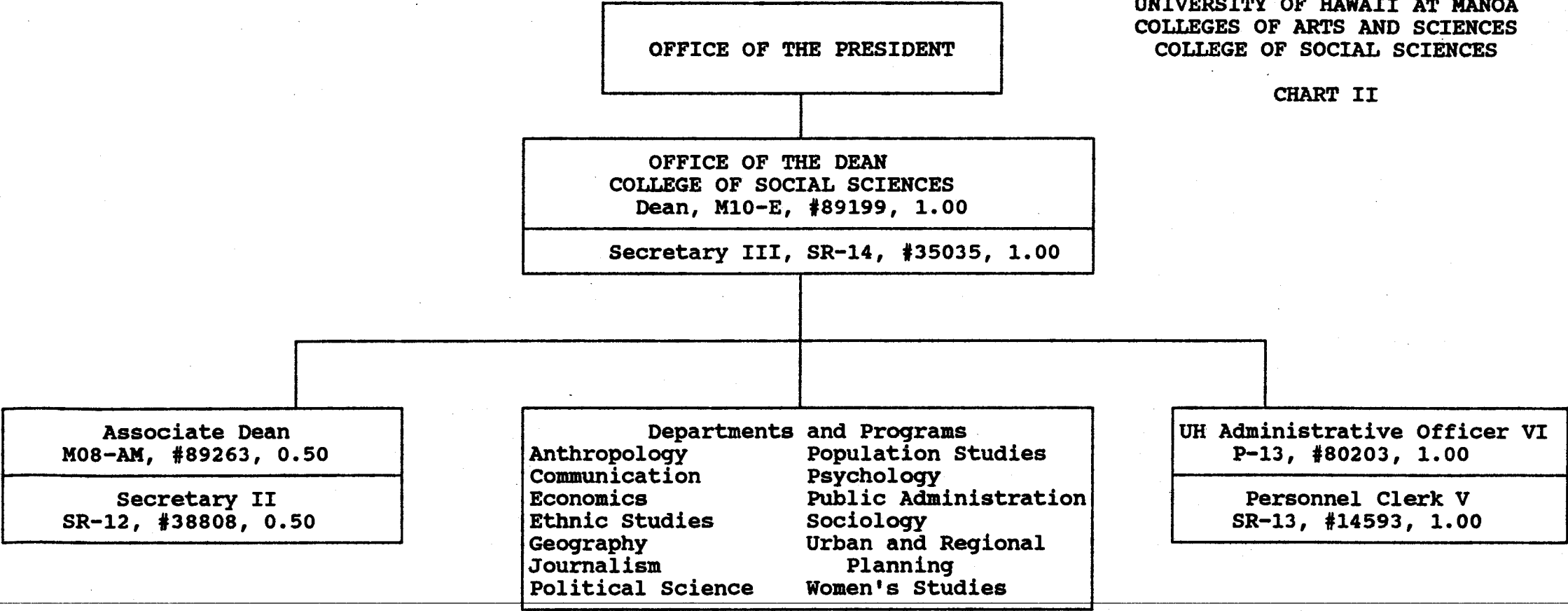
R. A. Dubanoski, Dean
College of Social Sciences
June 30, 1990

CHART UPDATED

DATE JUN 30 1990

STATE OF HAWAII
UNIVERSITY OF HAWAII
UNIVERSITY OF HAWAII AT MANOA
COLLEGES OF ARTS AND SCIENCES
COLLEGE OF SOCIAL SCIENCES

CHART II




APPROVED:

R. A. Dubanoski, Dean
College of Social Sciences
June 30, 1990

CHART UPDATED
DATE JUN 30 1990

STATE OF HAWAII
UNIVERSITY OF HAWAII
UNIVERSITY OF HAWAII AT MANOA
COLLEGES OF ARTS AND SCIENCES
COLLEGE OF SOCIAL SCIENCES

CHART III-a

OFFICE OF THE DEAN

DEPARTMENT OF ANTHROPOLOGY

Chair (appointed from faculty positions)

Secretary II, SR-12, #13482 1.00

UH Student Services Specialist II, P-06, #80639 1.00

UH Educational Specialist II, P-06, #81746 1.00

Faculty Positions: 15.25

Full time: #82188, 82195, 82207, 82534, 82638
82779, 82797, 83004, 83358, 83405
83574, 83924, 84206, 84399, 85082

Part time: #83498

Graduate Assistants: 3.00

#83831A, 83831B, 88064, 88367
88529, 88591

21.25

APPROVED:



R. A. Dubanoski, Dean
College of Social Sciences
June 30, 1990

CHART UPDATED

DATE JUN 30 1990

STATE OF HAWAII
UNIVERSITY OF HAWAII
UNIVERSITY OF HAWAII AT MANOA
COLLEGES OF ARTS AND SCIENCES
COLLEGE OF SOCIAL SCIENCES

CHART III-b

OFFICE OF THE DEAN

DEPARTMENT OF COMMUNICATION

Chair (appointed from faculty positions)

Secretary II, SR-12, #14362

1.00

Clerk-Stenographer II, SR-09, #18114

0.50

Faculty Positions:

12.00

Full time: #82279, 82280, 82602, 82871, 82905
82982, 83302, 83756, 84217, 84505
88169, 88619

Graduate Assistants:

3.50

#85507, 88210, 88506, 88534, 88581
88607, 88681

17.00

APPROVED:

R. A. Dubanoski
R. A. Dubanoski, Dean
College of Social Sciences
June 30, 1990

CHART UPDATED
JUN 30 1990
DATE _____

STATE OF HAWAII
UNIVERSITY OF HAWAII
UNIVERSITY OF HAWAII AT MANOA
COLLEGES OF ARTS AND SCIENCES
COLLEGE OF SOCIAL SCIENCES

CHART III-c

OFFICE OF THE DEAN

DEPARTMENT OF ECONOMICS

Chair (appointed from faculty positions)	
Secretary II, SR-12, #15351	1.00
Clerk-Stenographer II, SR-09, #14360	1.00
Faculty Positions:	18.00
<u>Full time</u> : #82286, 82679, 82777, 82838, 83023	
83411, 83484, 83748, 83943, 83953	
84047, 84054, 84200, 84643, 84815	
85027	
<u>Part time</u> : #82741, 83611, 83650, 84928	
Graduate Assistants:	4.50
#88061, 88175, 88193, 88233, 88248	
88262, 88420, 88517, 88631	

	24.50

APPROVED:



R. A. Dubanoski, Dean
College of Social Sciences
June 30, 1990

CHART UPDATED

DATE JUN 30 1990

STATE OF HAWAII
UNIVERSITY OF HAWAII
UNIVERSITY OF HAWAII AT MANOA
COLLEGES OF ARTS AND SCIENCES
COLLEGE OF SOCIAL SCIENCES

CHART III-d

OFFICE OF THE DEAN

ETHNIC STUDIES PROGRAM

Director (appointed from faculty positions)

Secretary II, SR-12, #24006

1.00

Faculty Positions:

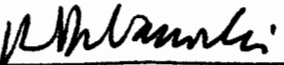
6.75

Full time: #83195, 85586, 84790, 84805, 84801, 84803

Part time: #83191, 83738

7.75

APPROVED:


R. A. Dubanoski, Dean
College of Social Sciences
June 30, 1990

Note: One position appropriated but not established as of 6/30/90
UH Educational Specialist, P-06, pseudo #90573F, 1.00 FTE

CHART UPDATED

DATE JUN 30 1990

STATE OF HAWAII
UNIVERSITY OF HAWAII
UNIVERSITY OF HAWAII AT MANOA
COLLEGES OF ARTS AND SCIENCES
COLLEGE OF SOCIAL SCIENCES

CHART III-e

OFFICE OF THE DEAN

DEPARTMENT OF GEOGRAPHY

Chair (appointed from faculty positions)

Secretary II, SR-12, #14358 1.00

Clerk-Stenographer II, SR-09, #18580 1.00

UH Educational Specialist II, P-06, #80641 1.00

Faculty Positions: 14.25

Full time: #82208, 82332, 82681, 82708, 83935
84209M, 84254, 84518, 84565, 84841M

Part time: #82328, 83275, 82338, 82680
86071L, 83522M, 85298

Graduate Assistants: 6.00

#88065, 88103, 88110, 88140, 88189
88217, 88232, 88391, 88416, 88446,
88446M, 88620

23.25

APPROVED:

R. A. Dubanoski

R. A. Dubanoski, Dean
College of Social Sciences
June 30, 1990

CHART UPDATED
JUN 30 1990
DATE

STATE OF HAWAII
UNIVERSITY OF HAWAII
UNIVERSITY OF HAWAII AT MANOA
COLLEGES OF ARTS AND SCIENCES
COLLEGE OF SOCIAL SCIENCES

CHART III-f

OFFICE OF THE DEAN

DEPARTMENT OF JOURNALISM

Chair (appointed from faculty positions)

Secretary II, SR-12, # 13807 1.00

Faculty Positions: 7.00

Full time: #82500, 82611, 82946, 83458
84115, 84478, 84972

8.00

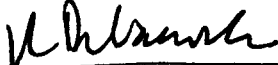
APPROVED:

R. A. Dubanoski, Dean
College of Social Sciences
June 30, 1990

CHART UPDATED
JUN 30 1990
DATE

STATE OF HAWAII
UNIVERSITY OF HAWAII
UNIVERSITY OF HAWAII AT MANOA
COLLEGES OF ARTS AND SCIENCES
COLLEGE OF SOCIAL SCIENCES

CHART III-g

OFFICE OF THE DEAN

DEPARTMENT OF POLITICAL SCIENCE

Chair (appointed from faculty positions)

Secretary II, SR-12, #11112 1.00

Clerk-Stenographer II, SR-09, #14363 1.00

Clerk-Stenographer II, SR-09, #21775 1.00

Faculty Positions: 22.50

Full time: #82145, 82278, 82317, 82672, 82823
82913, 83085, 83162, 83194, 83197
83311, 83370, 83621, 83753, 83858
84023, 84042, 84109, 84130, 84234
84556, 84800

Part time: #83277, 83778, 84059

Graduate Assistants: 4.00

#88076, 88090, 88238, 88336, 88407
88549, 88676, 88676A

29.50

APPROVED:

R. A. Dubanoski

R. A. Dubanoski, Dean
College of Social Sciences
June 30, 1990

CHART UPDATED

DATE JUN 30 1990

STATE OF HAWAII
UNIVERSITY OF HAWAII
UNIVERSITY OF HAWAII AT MANOA
COLLEGES OF ARTS AND SCIENCES
COLLEGE OF SOCIAL SCIENCES

CHART III-h

OFFICE OF THE DEAN

POPULATION STUDIES PROGRAM

Director (appointed from faculty positions)

0.00

APPROVED:

R. A. Dubanoski
R. A. Dubanoski, Dean
College of Social Sciences
June 30, 1990

CHART UPDATED
DATE JUN 30 1990

STATE OF HAWAII
UNIVERSITY OF HAWAII
UNIVERSITY OF HAWAII AT MANOA
COLLEGES OF ARTS AND SCIENCES
COLLEGE OF SOCIAL SCIENCES

OFFICE OF THE DEAN

CHART III-i

DEPARTMENT OF PSYCHOLOGY

Chair (appointed from faculty positions)
Director, Clinical Studies (appointed from faculty positions)

Secretary II, SR-12, #12856	1.00
Clerk-Stenographer III, SR-11, #19052	1.00
Clerk-Stenographer II, SR-09, #21971	1.00
UH Student Services Specialist III, P-09, #80638	1.00
UH Electronics Engineer, P-12, #81225	1.00

Faculty Positions: 25.00

Full time: #82198, 82294, 82398, 82412, 82471, 82537, 82564
82615, 82916, 83092, 83110, 83507, 83626, 84131
84225, 84346, 84416, 88491, 84497, 84827, 84866
85075, 88005

Part time: #82192, 83799, 84319, 84861M

Graduate Assistants: 4.00
#85148, 88046, 88060, 88252, 88320, 88362, 88511
88559

34.00

APPROVED:

R. A. Dubanoski

R. A. Dubanoski, Dean
College of Social Sciences
June 30, 1990

Note: Position #81225 to be redescribed, transferred to Chart II
Exchanged with SOEST for #82077

CHART UPDATED
JUN 30 1990
DATE

STATE OF HAWAII
 UNIVERSITY OF HAWAII
 UNIVERSITY OF HAWAII AT MANOA
 COLLEGES OF ARTS AND SCIENCES
 COLLEGE OF SOCIAL SCIENCES

CHART III-j

OFFICE OF THE DEAN

PUBLIC ADMINISTRATION PROGRAM

Director (appointed from faculty positions)

Faculty Positions:

2.00

Full time: #84788, 84789

 2.00

APPROVED:

R. A. Dubanoski
 R. A. Dubanoski, Dean
 College of Social Sciences
 June 30, 1990

CHART UPDATED
 JUN 30 1990

STATE OF HAWAII
UNIVERSITY OF HAWAII
UNIVERSITY OF HAWAII AT MANOA
COLLEGES OF ARTS AND SCIENCES
COLLEGE OF SOCIAL SCIENCES

CHART III-k

OFFICE OF THE DEAN

DEPARTMENT OF SOCIOLOGY

Chair (appointed from faculty positions)

Secretary II, SR-12, #13485 1.00

Clerk-Stenographer II, SR-09, #16953 1.00

UH Student Services Specialist II, P-06, #80640 1.00

Faculty Positions: 19.00

Full time: #82097, 82114, 82125, 82204, 82323, 82605
83050, 83164, 83867, 84076, 84121, 84237M
84286, 84456M, 84502M, 84504, 84575, 84616
84642

Graduate Assistants: 5.50

#88008, 88100, 88182, 88208, 88268, 88408
88485, 88498, 88533, 88616, 88392

27.50

APPROVED:

R. A. Dubanoski

R. A. Dubanoski, Dean
College of Social Sciences
June 30, 1990

CHART UPDATED
DATE JUN 30 1990

STATE OF HAWAII
UNIVERSITY OF HAWAII
UNIVERSITY OF HAWAII AT MANOA
COLLEGES OF ARTS AND SCIENCES
COLLEGE OF SOCIAL SCIENCES

CHART III-1

OFFICE OF THE DEAN

DEPARTMENT OF URBAN AND REGIONAL PLANNING

Chair (appointed from faculty positions)

Secretary II, SR-12, #15640

1.00

Faculty Positions:

6.00

Full time: #82539, 83624, 84060, 84522, 85736

Part time: #82377, 83359

7.00

APPROVED:

R. A. Dubanoski

R. A. Dubanoski, Dean
College of Social Sciences
June 30, 1990

CHART UPDATED

DATE JUN 30 1990

STATE OF HAWAII
UNIVERSITY OF HAWAII
UNIVERSITY OF HAWAII AT MANOA
COLLEGES OF ARTS AND SCIENCES
COLLEGE OF SOCIAL SCIENCES

CHART III-m

OFFICE OF THE DEAN

WOMEN'S STUDIES PROGRAM

Director (appointed from faculty positions)

Secretary II, SR-12, #31323

1.00

Faculty Positions:

4.25

Full time: #82870

Part time: #82318, 82770M, 84034M, 84057M
85962, 86070, 86071M

5.25

APPROVED:

R. A. Dubanoski
R. A. Dubanoski, Dean
College of Social Sciences
June 30, 1990

CHART UPDATED

DATE JUN 30 1990