

CHART UPDATED
DATE **JUN 30 1991**

State of Hawaii
University of Hawaii
Kapiolani Community College
Position Organization Chart
Chart I

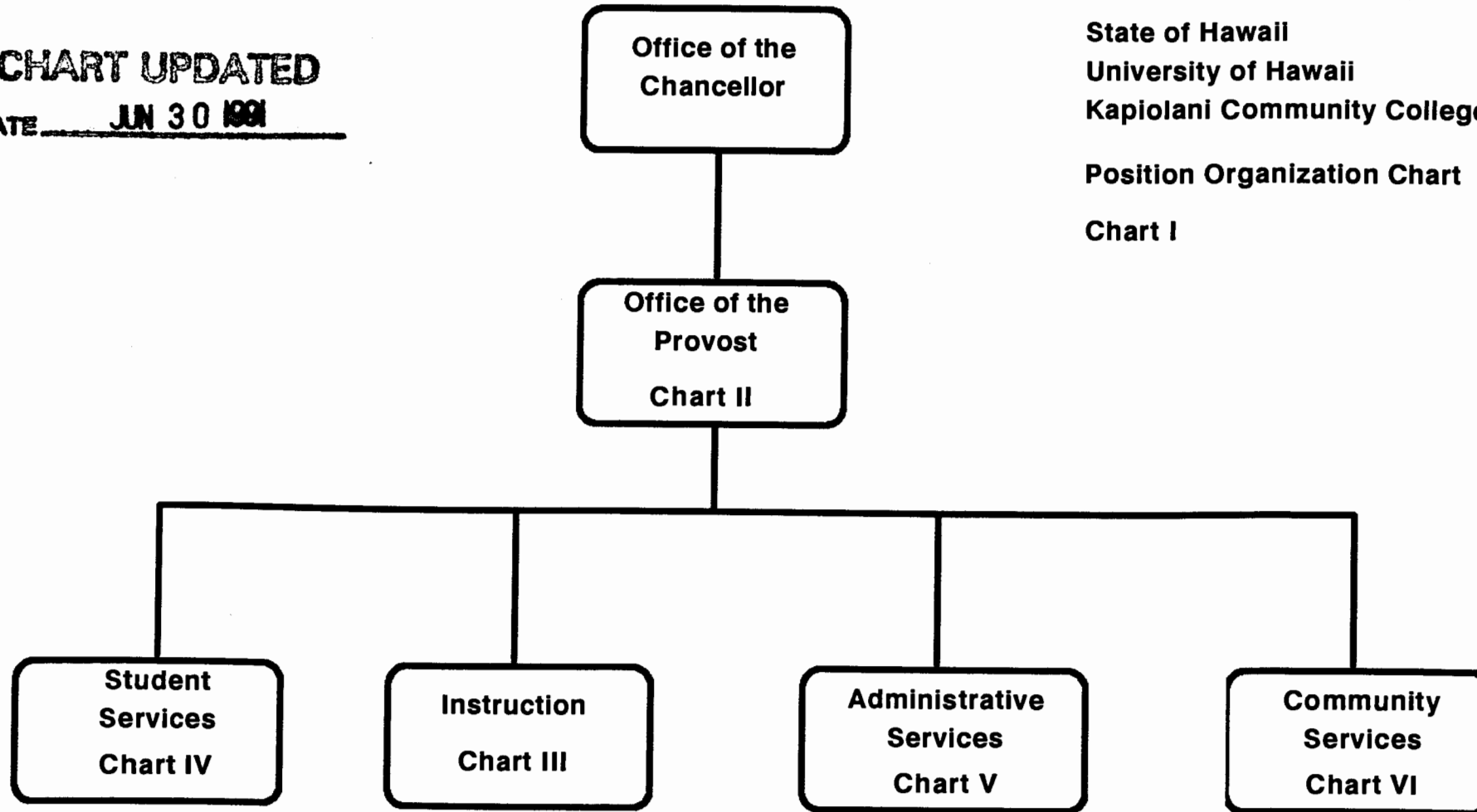
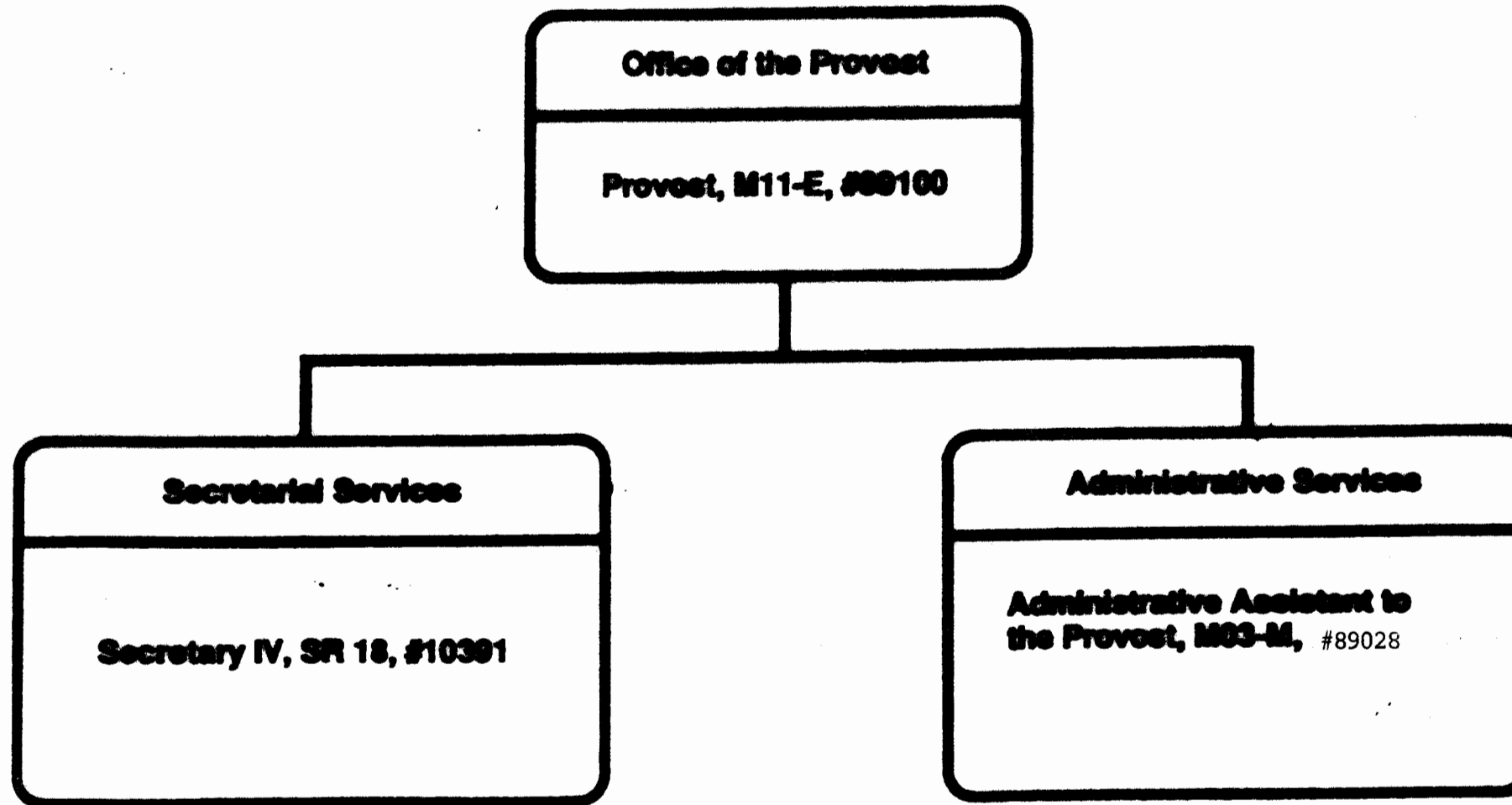


Chart Updated
Date **JUNE 30, 1991**

State of Hawaii
University of Hawaii
Kaplan Community College

Organization Chart
Chart II



APPROVED:

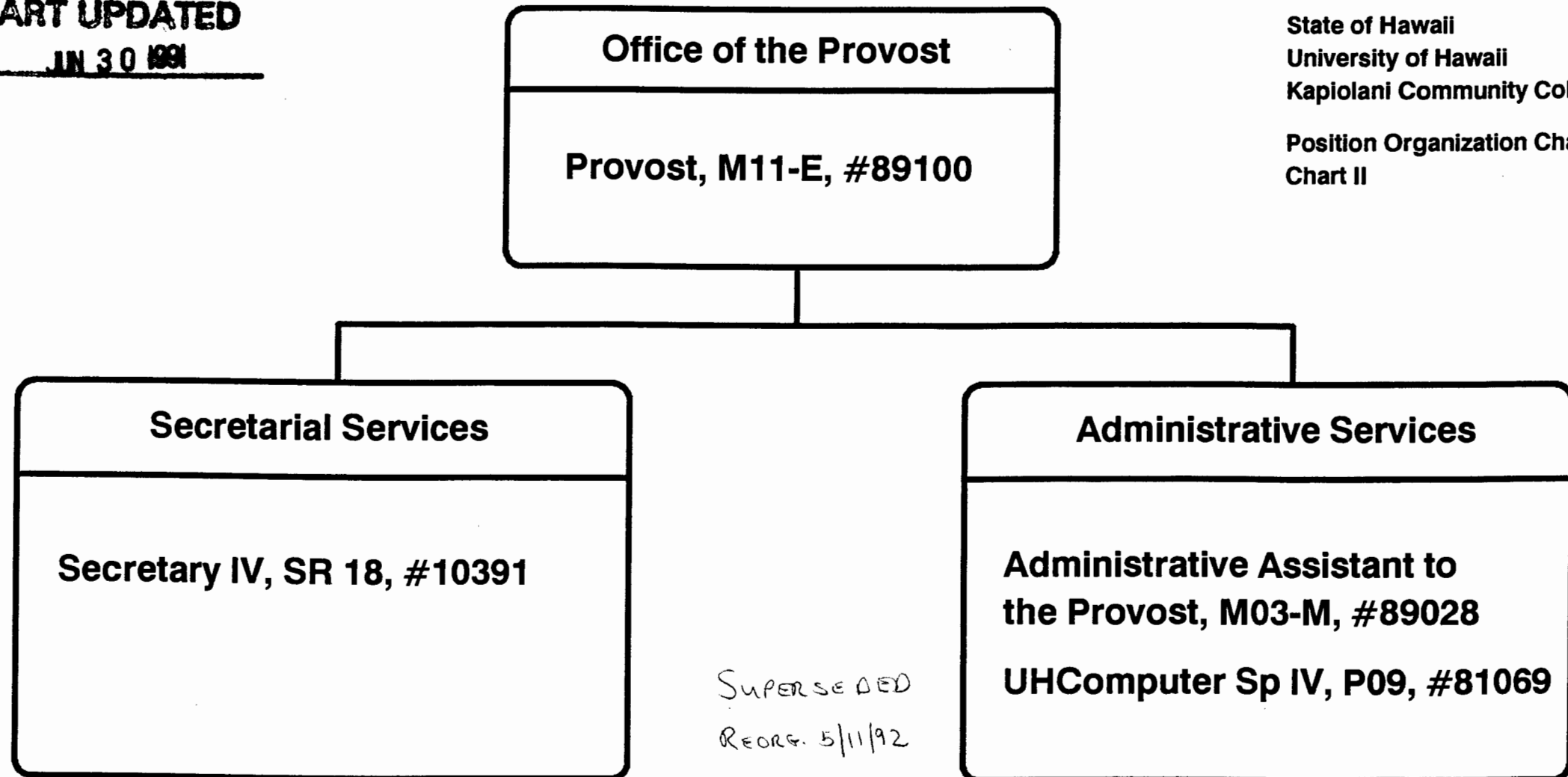
Joyce S. Tsunoda
Joyce S. Tsunoda
Senior Vice President & Chancellor for
Community Colleges

Date: 5/11/92

CHART UPDATED
DATE JUN 30 1991

State of Hawaii
University of Hawaii
Kapiolani Community College

Position Organization Chart
Chart II

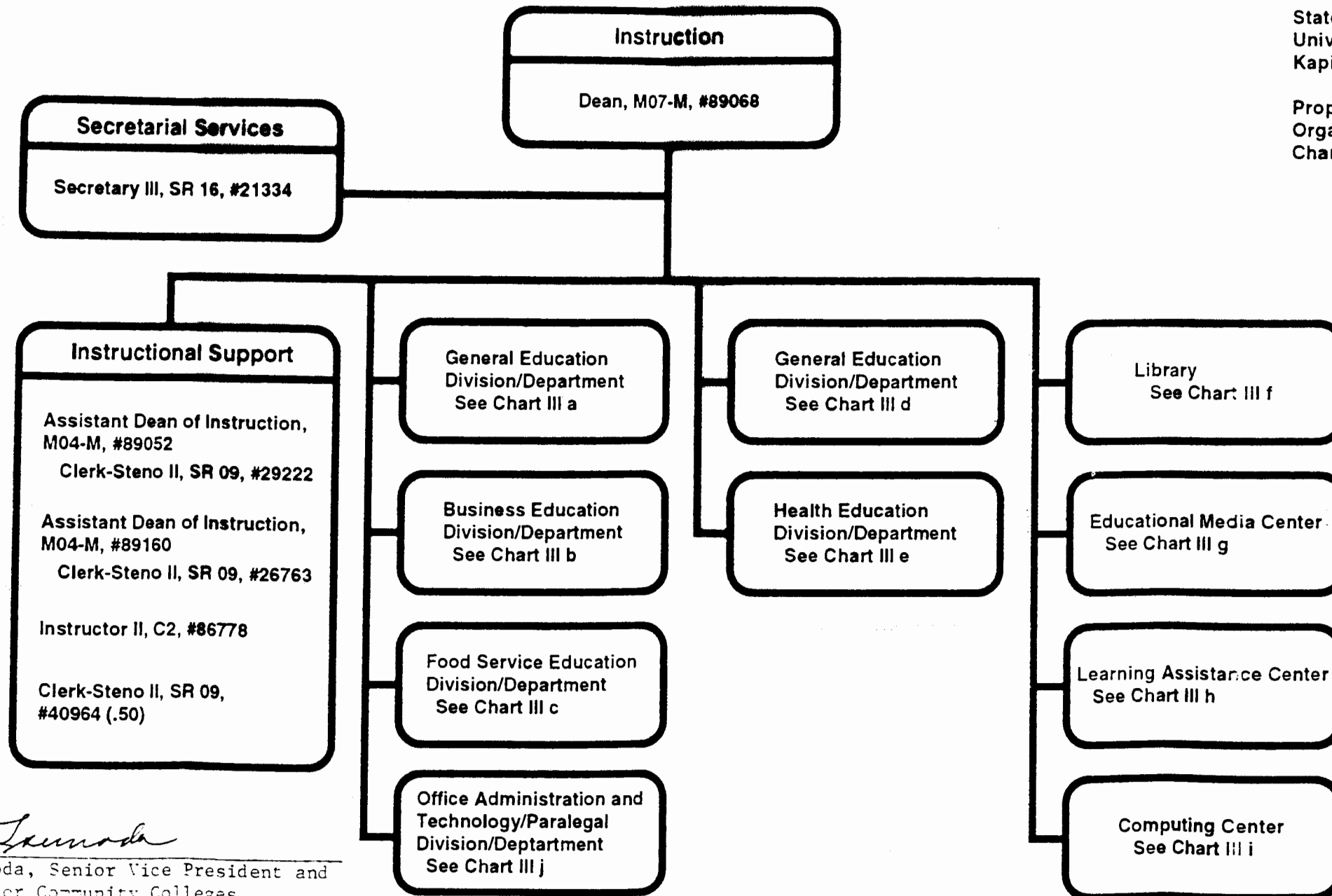


General Funds (4.00)

Chart Updated
Date June 30, 1991

State of Hawaii
University of Hawaii
Kapiolani Community College

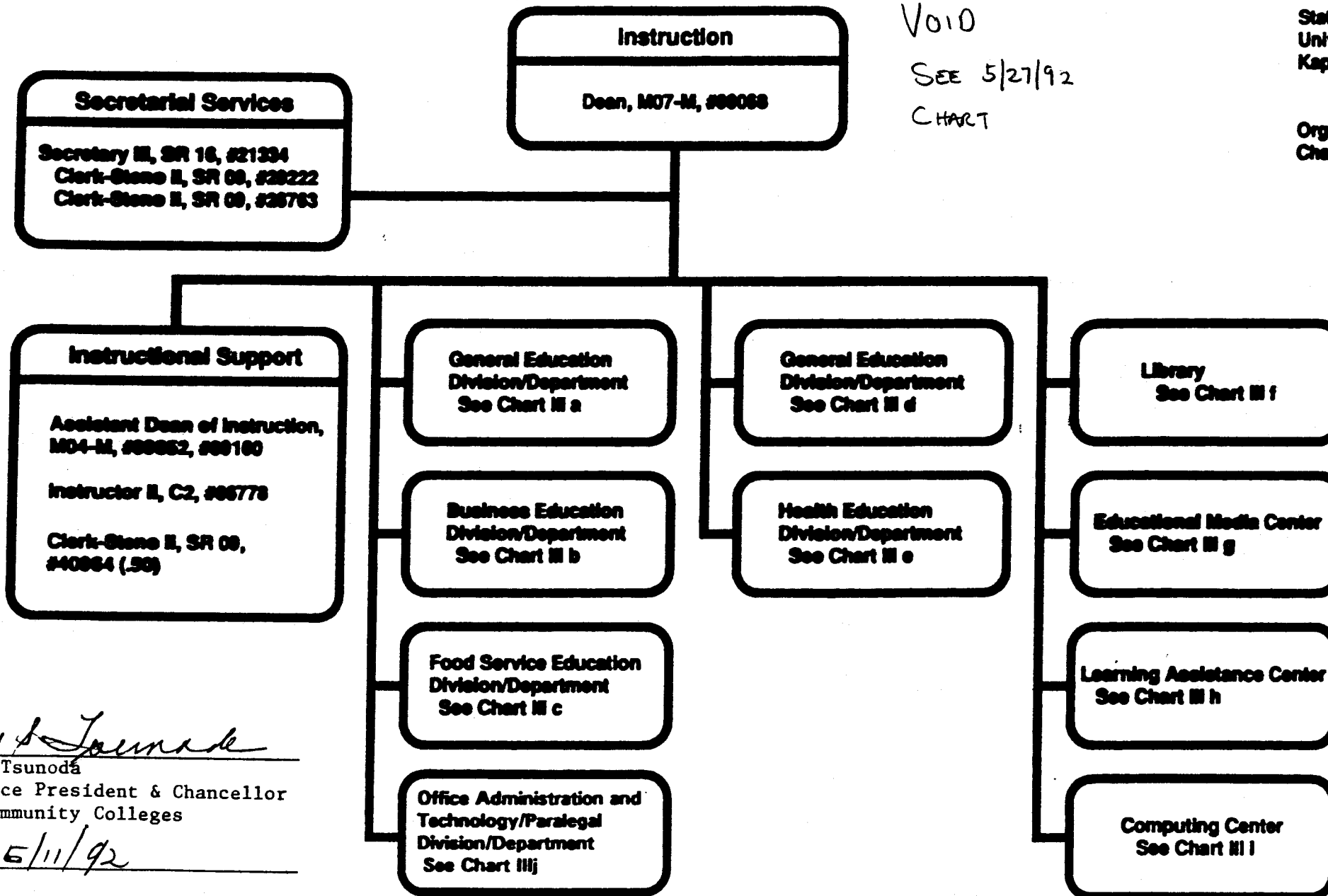
Proposed Position
Organization Chart
Chart III



APPROVED:

Wye S. Tsunoda
Wye S. Tsunoda, Senior Vice President and
Chancellor for Community Colleges

DATE: *May 27, 1992*



VOID
SEE 5/27/92
CHART

State of Hawaii
University of Hawaii
Kapiolani Community College

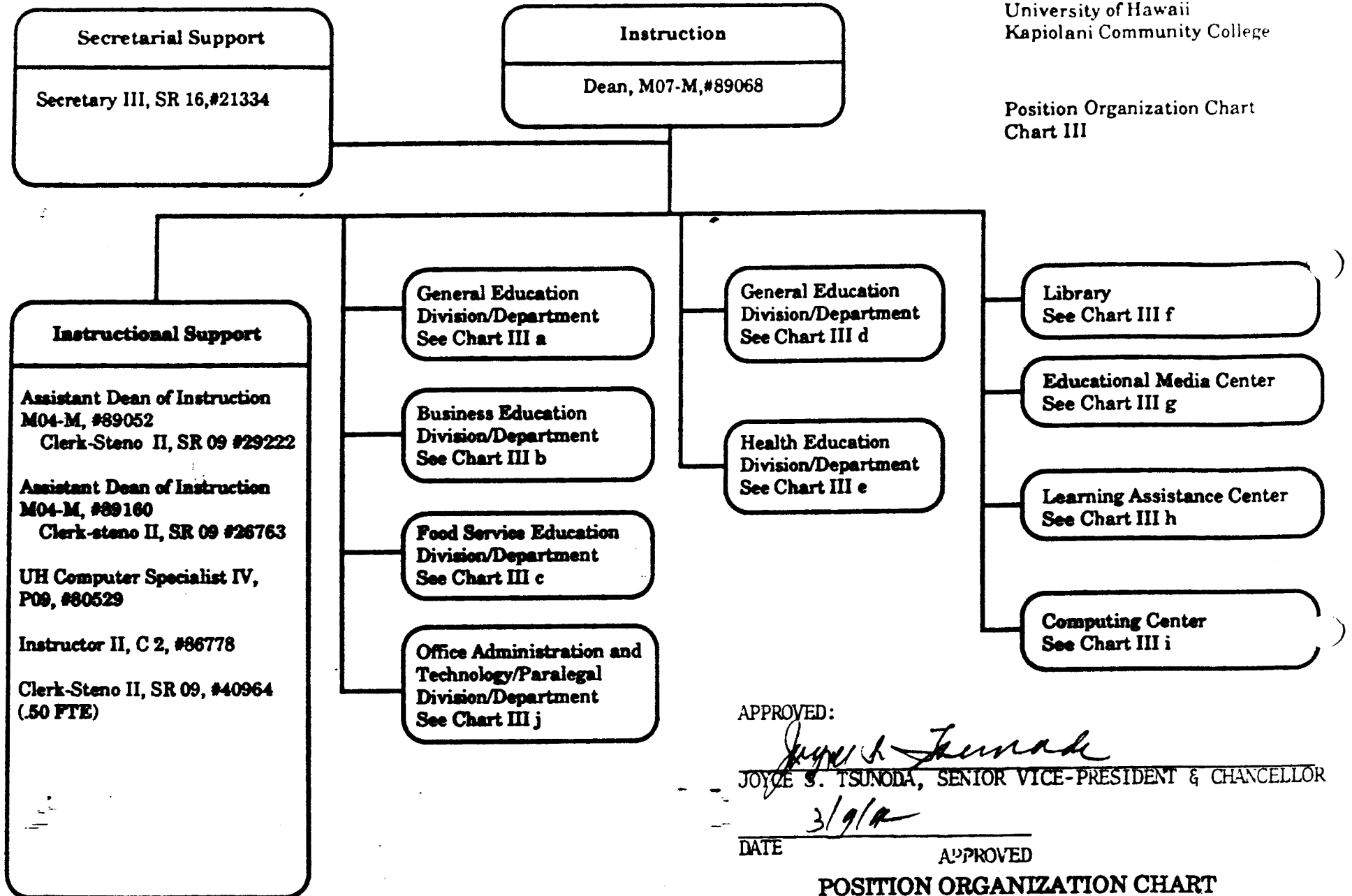
Organization Chart
Chart III

APPROVED:

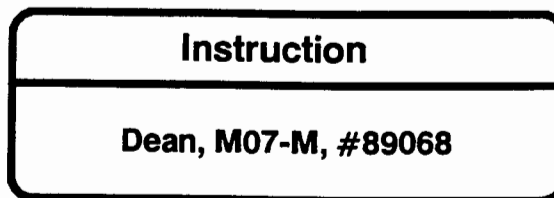
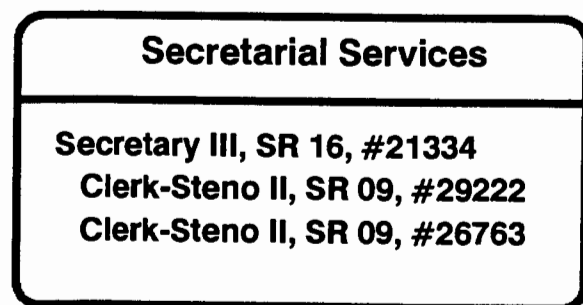
Joyce S. Tsunoda
Joyce S. Tsunoda
Senior Vice President & Chancellor
for Community Colleges

Date: 5/11/92

Position Organization Chart
Chart III

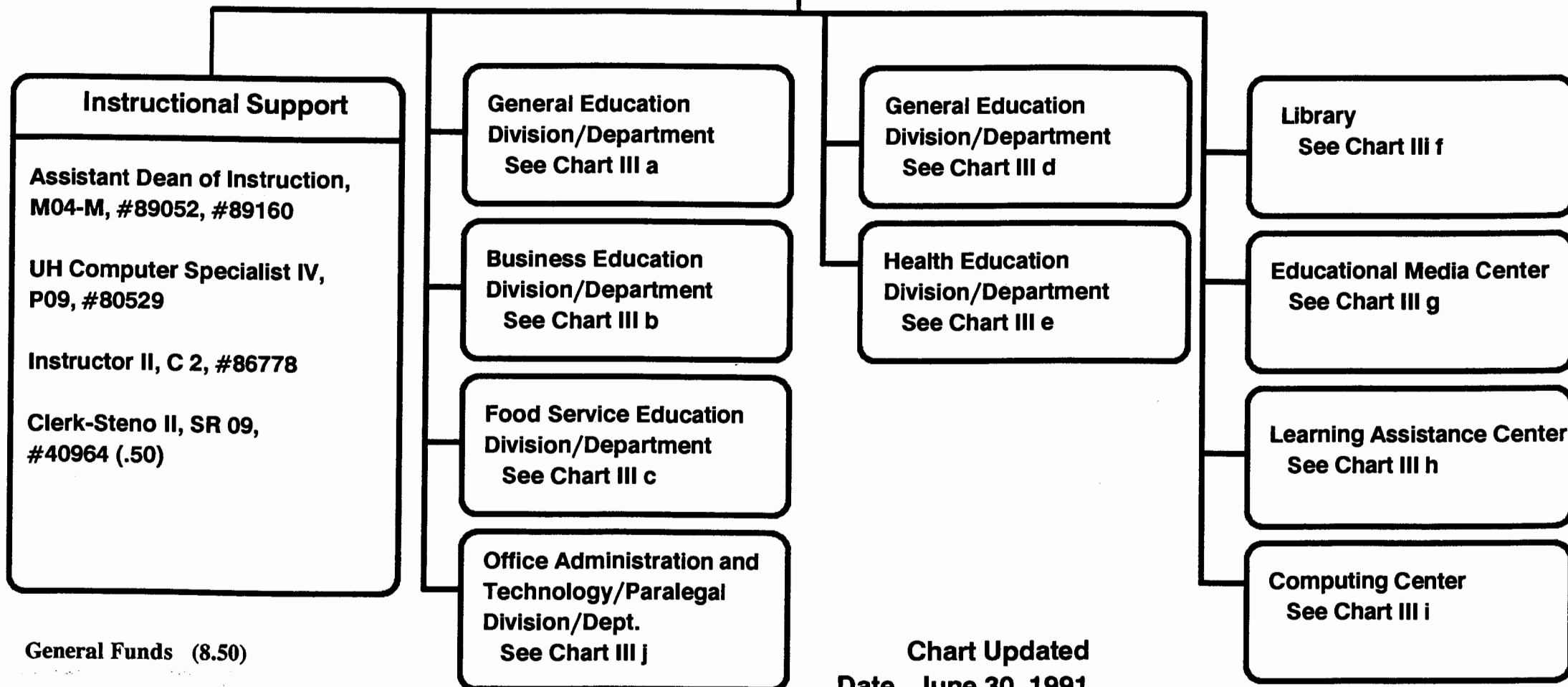


SUPERSEDED
COMPUTING CENTER
REORG. 5/11/92. THIS
CHART AMENDED ON 5/27/92
DUE TO OMISSION OF
CLK-STENOS 29222, 26763
IN INSTRUCTIONAL SUPPORT.



State of Hawaii
University of Hawaii
Kapiolani Community College

Position Organization Chart
Chart III



General Funds (8.50)

Chart Updated
Date June 30, 1991

CHART UPDATED
DATE JUN 30 1991

SUPERSEDED REORG.
3/9/92

CHART UPDATED

DATE JUN 30 1991

General Education Division/Department

General Education

Social Science

Chairperson, # _____ *

Instructors _____ Total (11.00)

Full-time: #83745, #84972, #84973, #83642 #82152, #82706,
#82935, #83492, #82560, #87403, #86599

Language Arts

Chairperson, # _____ *

Instructors _____ Total (20.50)

Full-time: #83559, #82178, #83783, #83903, #82232, #82555,
#82776, #83308, #83447, #83870, #84327, #84409,
#83795, #83123, #86596, #86594, #86595, #86604
#86798, #86803

Part-time: #86799 (.50)

General Education, Clerical Staff**

Secretary II, SR 14, #22313

Clerk-Typist II, SR08, #26658, #22310, #42059

State of Hawaii
University of Hawaii
Kapiolani Community College
Instruction

Position Organization Chart
Chart III a

General Funds (35.50)

Chart Updated

Date June 30, 1991

*Chairperson is appointed from among instructional positions within department.

**Secretarial and Clerical staff serves all four General Education Departments--Social Science,
Language Arts, Mathematics/Science, and Humanities.

CHART UPDATED

DATE JUN 30 1991

Business Education Division/Department

Business Education

Accounting/Data Processing

Chairperson, # _____ *

Instructors

Total (11.00)

Full-time: #82026, #82066, #82728, #82931, #82795, #83221,
#84337, #82503, #83901, #86591, #86598

Business Administration

Chairperson, # _____ *

Instructors

Total (6.00)

Full-time: #82218, #82231, #82429, #82389, #84150,
#84369

Business Education, Clerical Staff

Secretary II, SR 14, #22312

State of Hawaii
University of Hawaii
Kapiolani Community College
Instruction

Position Organization Chart
Chart III b

General Funds (18.00)

*Chairperson is appointed from among instructional positions within department.

Chart Updated
Date June 30, 1991

**Food Service and Hospitality Education
Division/Department**

Food Service and Hospitality Education

Chairperson, # _____ *

Instructors Total (15.00)

**Full-time: #82540, #82970, #83225, #83460, #83684, #84091,
#84103, #84304, #84539, #82683, #82467, #83133,
#86597, #86670, #86719**

UH Educational & Academic Support Sp, P01, #81420 (w), #81422 (w)

Food Service, Clerical Staff

Secretary II, SR 14, #16962

Cook III, WB 08, #22318 (w)

Snack Bar Cashier, SR 06, #22319 (w)

Clerk-Typist II, SR 08, #29010 (w)

Cafeteria Helper, WB 02, #32863 (w)

***Chairperson is appointed from among instructional positions within department.
(w) Represents positions funded by the Food Service Revolving Fund.**

**State of Hawaii
University of Hawaii
Kapiolani Community College
Instruction**

**Position Organization Chart
Chart III c**

**General Funds (16.00)
(W) Revolving Funds (6.00)**

**Chart Updated
Date June 30, 1991**

CHART UPDATED

DATE JUN 30 1991

Instruction
Dean, M07-M, #89068

General Education Division/Department
<p>General Education</p> <p>Mathematics/Science Chairperson, # _____ Instructors Total (22.00) Full-time: #82492, #82981, #83974, #84458, #82394, #83086, #83282, #83688, #83733, #83357, #83939, #87401, #82910, #86600, #86592, #86593, #86606, #86754, #86718, #82031, #86827, #86830 UH Educational Specialist I, PO3, #81246</p> <p>Humanities Chairperson, # _____ Instructors Total (14.00) Full-time: #84971, #83094, #82831, #82925, #83809, #84874, #82807, #84470, #82052, #82983, #87402, #87404, #86802, #84882</p>


*Chairperson is appointed from among instructional positions within department.

State of Hawaii
University of Hawaii
Kapi'olani Community College
Instruction

Position Organization Chart
Chart IIIId

General Funds (37.00)

APPROVED:



Joyce S. Tsunoda
Senior Vice President & Chancellor for
Community Colleges

Date: May 4, 1992

General Education Division/Department

General Education

Mathematics/Science

Chairperson, # _____ *

Instructors Total (22.50)

Full-time: #82492, #82981, #83974, #84458, #82394, #83096,
#83262, #83688, #83733, #83357, #83939, #87401,
#82910, #86600, #86592, #86593, #86606, #86754,
#86718, #82031, #86827, #86830

Part-time: #86757 (.50)

UH Educational Specialist I, P03, #81246

Humanities

Chairperson, # _____ *

Instructors Total (14.00)

Full-time: #84971, #83094, #82631, #82925, #83809, #84974,
#82607, #84470, #82052, #82983, #87402, #87404,
#86602, #84882

State of Hawaii
University of Hawaii
Kapiolani Community College
Instruction

Position Organization Chart
Chart III d

SUPERSEDED

REORG. 5/4/92

General Funds (37.50)

* Chairperson is appointed from among instructional positions within department.

Chart Updated
Date June 30, 1991

CHART UPDATED
JUN 30 1991
DATE _____

Health Education Division/Department

Health Education

Allied Health

Chairperson, # _____ *

Instructors _____ Total (13.10)

Full-time: #84326, #83310, #83667, #82121, #82405, #82576,
#83321, #82162, #85821, #86385, #86384, #86882,
#86886

Part-time: #87052 (.10)

Nursing

Chairperson, # _____ *

Instructors _____ Total (31.50)

Full-time: #82064, #82513, #84487, #84629, #84655, #82244,
#86774, #86777, #86776, #86752, #86751, #86750,
#86749, #86747, #86737, #86738, #86746, #86743,
#86742, #86741, #86740, #86739, #86832, #86833,
#86834, #86836, #86838, #86837, #86839, #86840

Part-time: #84308 (.50), #84308A (.50), #86736 (.50)

Health Education, Clerical Staff

Secretary II, SR 14, #18093

Clerk-Steno II, SR 09, #32952, #42015

State of Hawaii
University of Hawaii
Kapiolani Community College
Instruction

Position Organization Chart
Chart III e

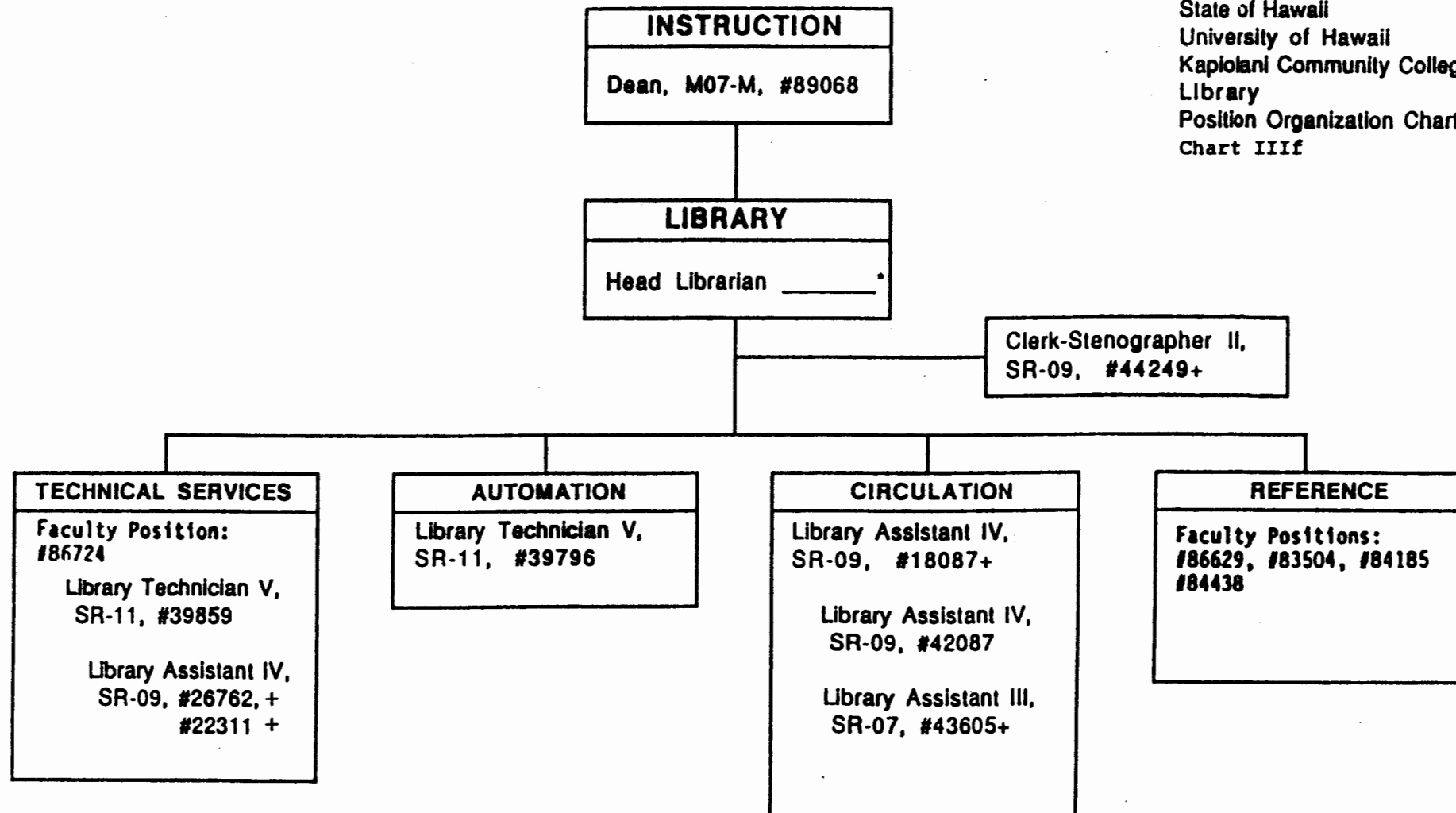
General Funds (47.60)

Chart Updated
Date June 30, 1991

*Chairperson is appointed from among instructional positions within department.

CHART UPDATED

DATE JUN 30 1991



*Head Librarian is appointed from among instructional positions within the unit.

+Position to be reclassified pending approval of reorganization.

APPROVED:

George S. Higa

TITLE:

Chancellor for Community Colleges

DATE:

April 13, 1992

Library

Unit Head _____ *

Instructor III, #84185, #84438, #83504, #86629
Instructor II, #86724

Library Tech V, SR 11, #39859, #39796

Library Assistant IV, SR 09, #18087, #22311, #26762, #42087, #43605

Library Assistant III, SR-07 #43605

Clerk-Steno II, SR09, #44249

State of Hawaii
University of Hawaii
Kapiolani Community College
Instruction

Position Organization Chart
Chart III f

LIB. ASST III
PER MARY P.
1/23/92

SUPERSEDED

REORG. 4/13/92

General Funds (13.00)

Chart Updated

Date June 30, 1991

*Unit Head/Chairperson is appointed from among instructional positions within the unit/department.

CHART UPDATED

DATE JUN 30 1991

Educational Media Center

Unit Head/Chairperson, # _____ *

Instructor V, #82386, #87603

UH Electronic Engineer I, P12, #81581

UH Computer Specialist II, P05, #81654

UH Electronic Technician II, P09, #80034

UH Electronic Technician I, P06, #81277

UH Educational Specialist II (Media), P06, #80694

UH Graphic Artist II, P05, #81060

Offset Press Operator II, WB08, #39797

Clerk-Steno III, SR 11, #21321

*Unit Head/Chairperson is appointed from among instructional positions within unit/department.

CHART UPDATED

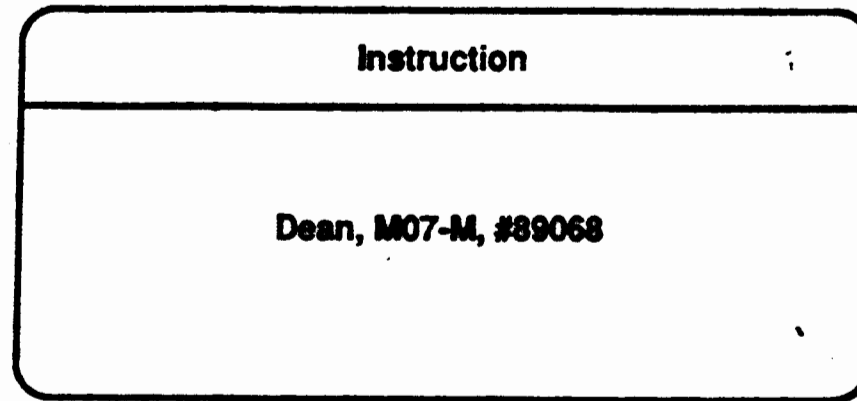
DATE JUN 30 1991

State of Hawaii
University of Hawaii
Kapiolani Community College
Instruction

Position Organization Chart
Chart III g

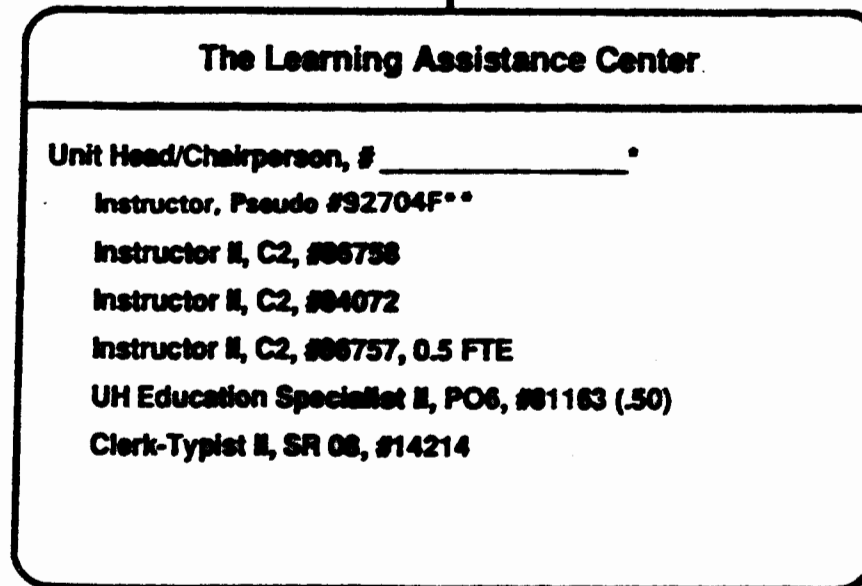
General Funds (10.00)

Chart Updated
Date June 30, 1991



State of Hawaii
University of Hawaii
Kapi'olani Community College
Instruction


Position Organization Chart
Chart IIIh



*Unit Head/Chairperson is appointed from among instructional positions within the unit.

**Pending establishment: Instructor, Pseudo #92704F

APPROVED:


Joyce S. Tsunoda
Senior Vice President & Chancellor for
Community Colleges

Date: May 4, 1992

Learning Assistance Center

Unit Head/Chairperson, # _____ *

Instructor II, C2, #86758

UH Educational Specialist II, P06, #81163 (.50)

Clerk-Typist II, SR 08, #14214

*Unit Head/Chairperson is appointed from among instructional positions at the College.

State of Hawaii
University of Hawaii
Kapiolani Community College
Instruction

Position Organization Chart
Chart III h

SUPERSEDED
Revised 5/7/92

General Funds (2.50)

Chart Updated
Date June 30, 1991

CHART UPDATED
DATE JUN 30 1991

Instruction

Dean, M07-M, #00068

Computing Center

UH Educational Specialist II, P06, #81384*

UH Computer Sp IV, P09, #81069

UH Computer Sp IV, P09, #80529

UH Computer Sp, #92713F**

UH Educational Sp, #92714F**

* Proposed to be redescribed & submitted for reclassification

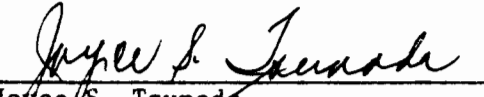
**Pending establishment: UH Computer Sp, #92713F
UH Educational Sp, #92714F

State of Hawaii
University of Hawaii
Kapiolani Community College

Instruction

Chart
Chart III I

APPROVED:


Joyce S. Tsunoda
Senior Vice President & Chancellor
for Community Colleges

Date 5/11/92

Computing Center

UH Educational Specialist II, P06, #81384

State of Hawaii
University of Hawaii
Kapiolani Community College
Instruction

Position Organization Chart
Chart III i

General Funds (1.00)

Chart Updated

Date June 30, 1991

CHART UPDATED

DATE JUN 30 1991

SUPERSEDED REORG.
5/11/92

Instruction
Dean, M07-M, #89068

Office Administration and Technology and Paralegal Division/Department
Office Administration and Technology/Paralegal Education
Office Administration and Technology Programs
Chairperson, # _____ *
Instructors Total (8.00)
Full-time: #82348, #82380, #82876, #83071, #83734, #83771, #84223, #84370
Paralegal Program
Chairperson, # _____ *
Instructors Total (1.00)
Full-time: #83380
Office Administration and Technology/Paralegal Education, Clerical Staff
Secretary II, SR 14, #18092


*Chairperson is appointed from among instructional positions within department.

State of Hawaii
University of Hawaii
Kapi'olani Community College
Instruction

Position Organization Chart
Chart IIIj

General Funds (10.00)

APPROVED:



Joyce S. Tsunoda
Senior Vice President & Chancellor for
Community Colleges

Date: May 4, 1992

**Office Administration and Technology
and Paralegal Division/Department**

Office Administration and Technology/Paralegal Education

Office Administration and Technology Programs

Chairperson, # _____ *

Instructors _____ Total (9.00)

Full-time: #82348, #82380, #82876, #83071, #83734, #83771,
#84072, #84223, #84370

Paralegal Program

Chairperson, # _____ *

Instructors _____ Total (1.00)

Full-time: #83360

**Office Administration and Technology/Paralegal Education,
Clerical Staff**

Secretary II, SR 14, #18092

*Chairperson is appointed from among instructional positions within department.

CHART UPDATED

DATE JUN 30 1991

State of Hawaii
University of Hawaii
Kapiolani Community College
Instruction

Position Organization Chart
Chart III J

SUPERSEDED
REORG. 5/4/92

General Funds (11.00)

Chart Updated
Date June 30, 1991

Proposed

State of Hawaii
University of Hawaii
Kapiolani Community College
Student Services

**Office of
the Provost**

Student Services

**APPROVED BY THE UNIVERSITY
BOARD OF REGENTS**

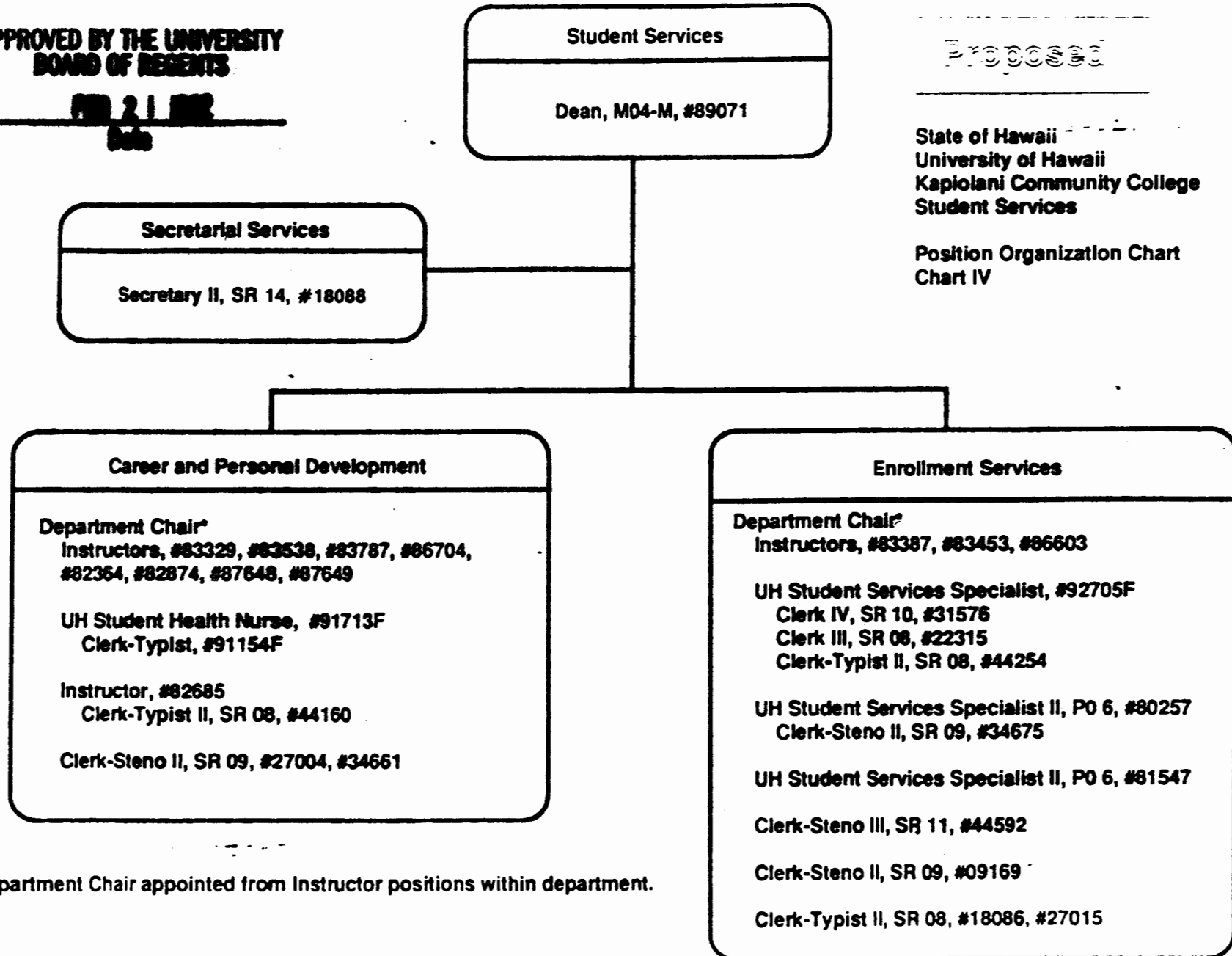
FEB 21 1992
Date

Enrollment Services

**Career and
Personal Development**

**APPROVED BY THE UNIVERSITY
BOARD OF REGENTS**

FEB 21 1982
Date



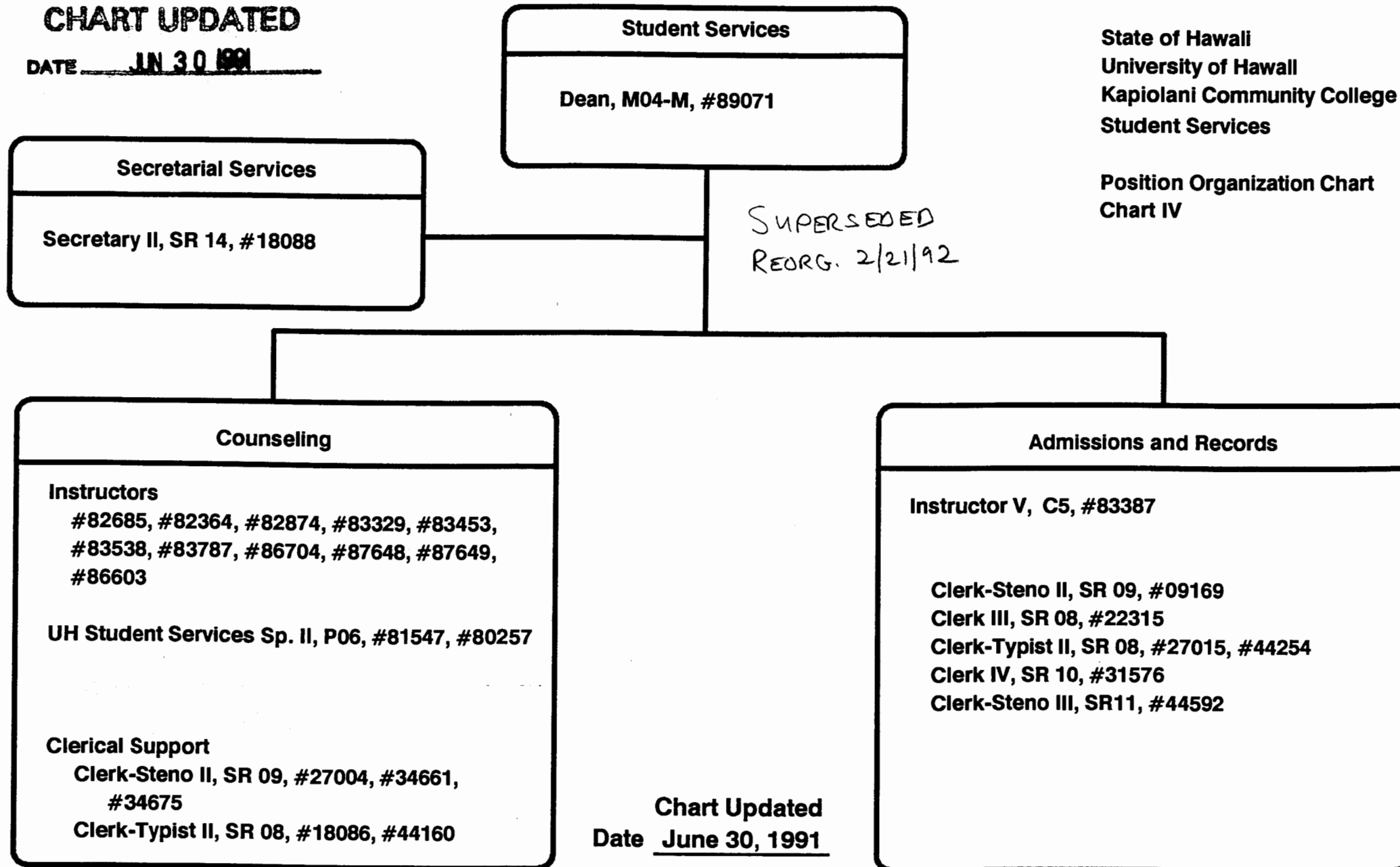
* Department Chair appointed from Instructor positions within department.

CHART UPDATED

DATE JUN 30 1991

State of Hawaii
University of Hawaii
Kapiolani Community College
Student Services

Position Organization Chart
Chart IV



Pending Establishment: Registered Professional Nurse III, #91713F, Clerk Typist III, #91154F

General Funds (29.00)

CHART UPDATED

DATE JUN 30 1991

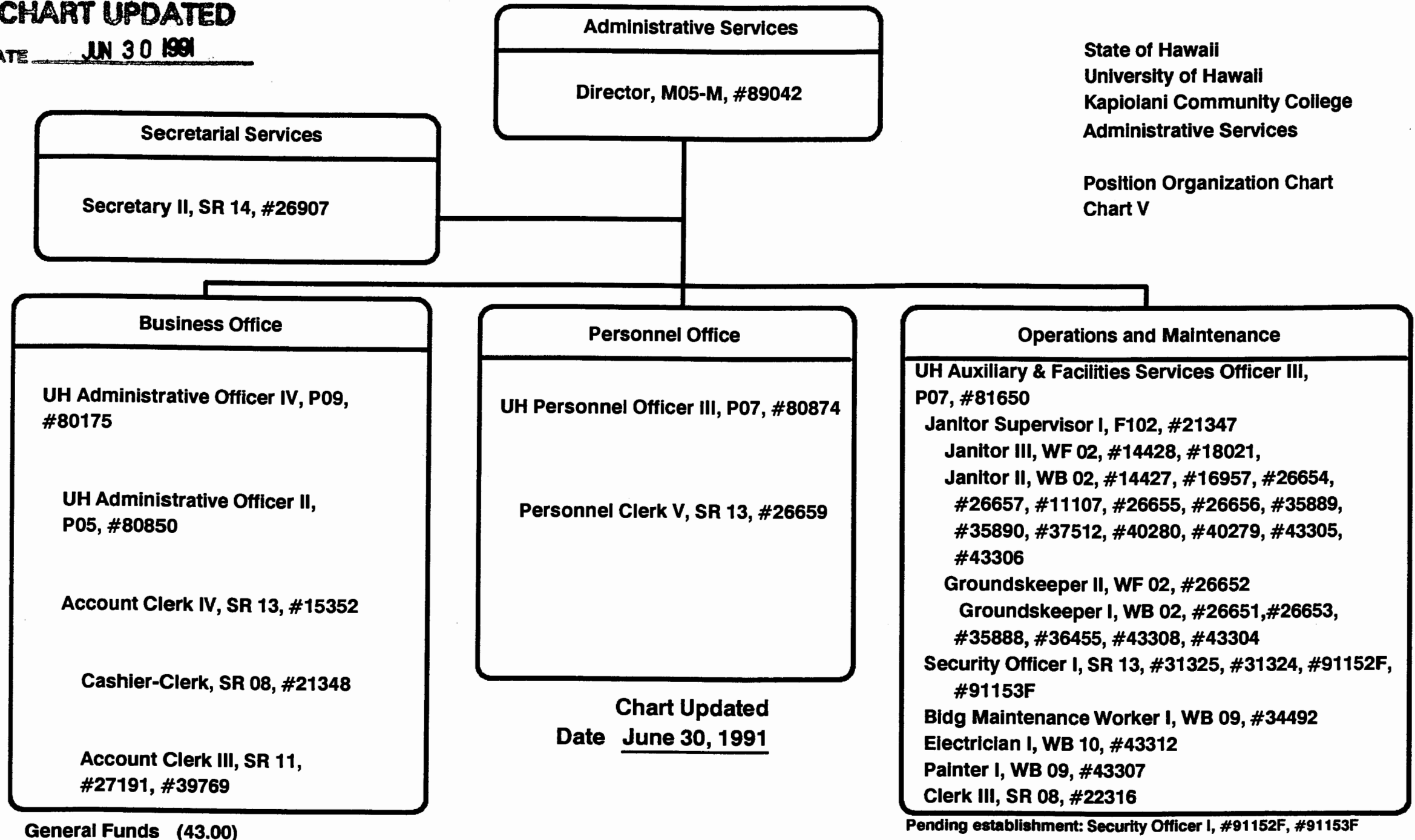
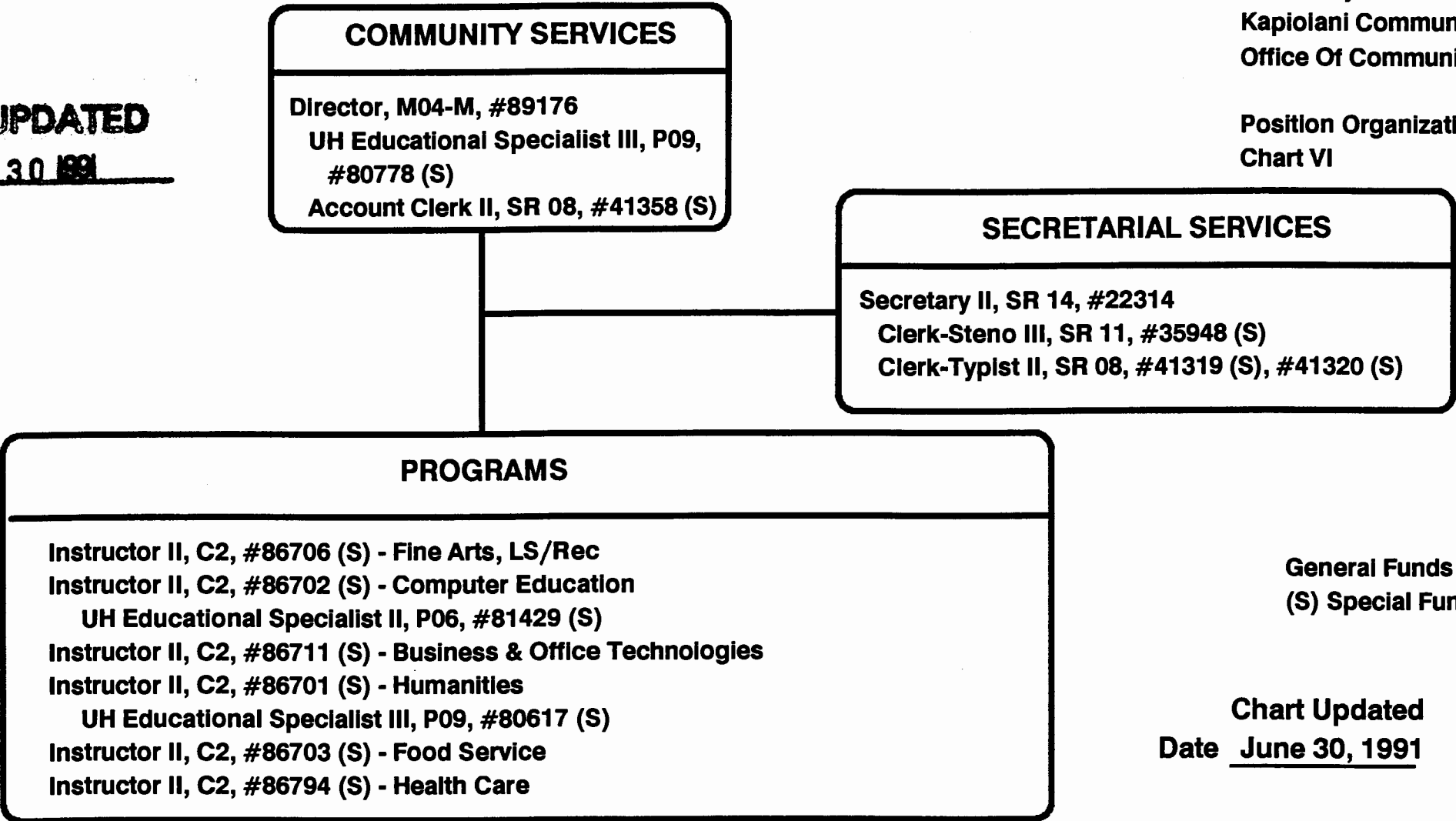


CHART UPDATED
DATE JUN 30 1991



General Funds (2.00)
(S) Special Funds (13.00)

Chart Updated
Date June 30, 1991

(S) Represent positions funded by the Community Services Special Fund