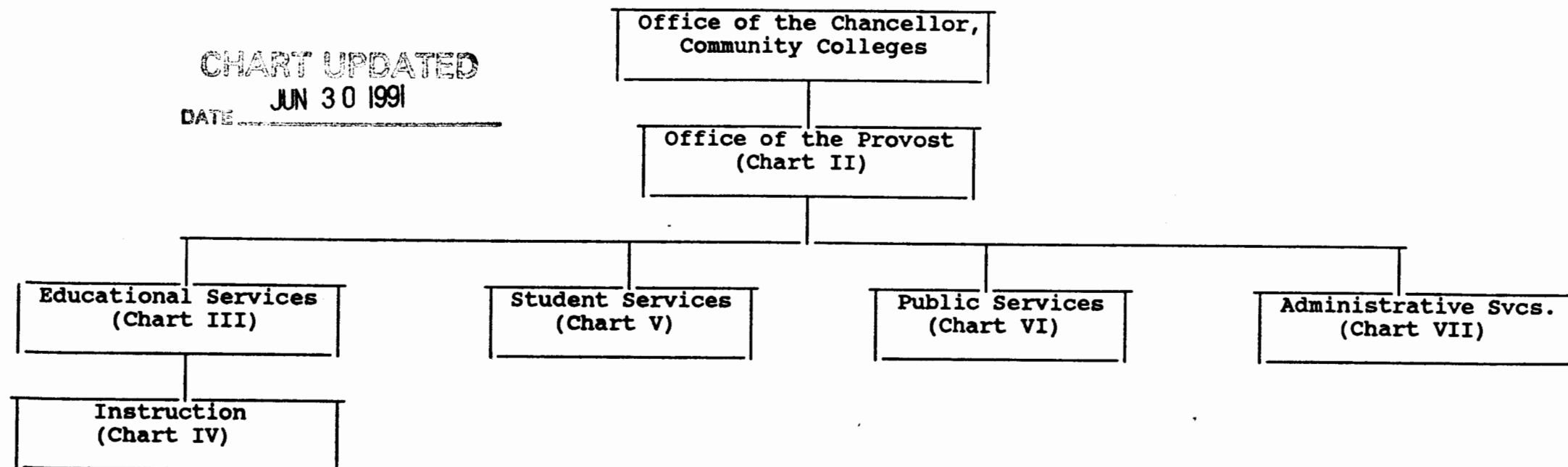


STATE OF HAWAII  
UNIVERSITY OF HAWAII  
LEEWARD COMMUNITY COLLEGE  
ORGANIZATION CHART  
CHART I



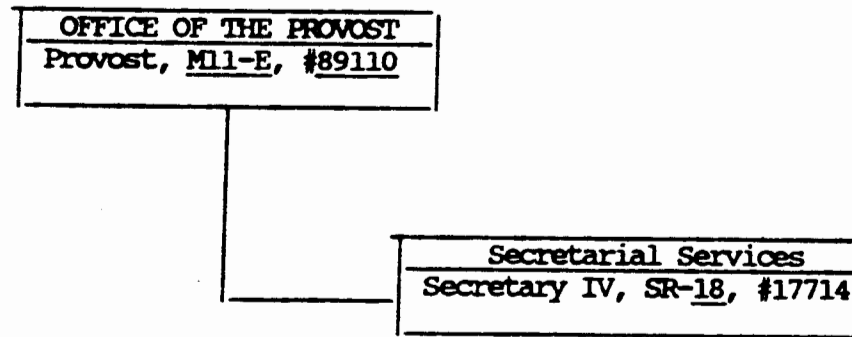
**CHART UPDATED**

DATE JUN 30 1991

STATE OF HAWAII  
UNIVERSITY OF HAWAII  
LEEWARD COMMUNITY COLLEGE  
OFFICE OF THE PROVOST

Position Organization Chart 06/30/91

Chart II



GENERAL FUNDS 2.00

STATE OF HAWAII  
UNIVERSITY OF HAWAII  
LEEWARD COMMUNITY COLLEGE

EDUCATIONAL SERVICES

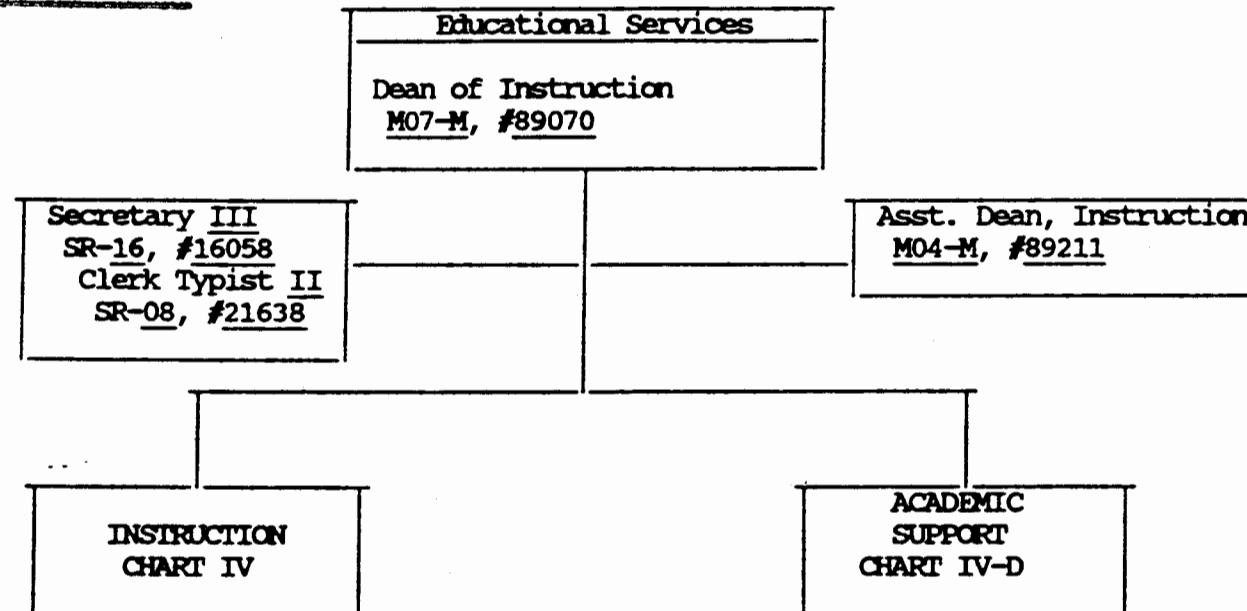
Position Organization Chart

06/30/91

CHART UPDATED

DATE JUN 30 1991

Chart III



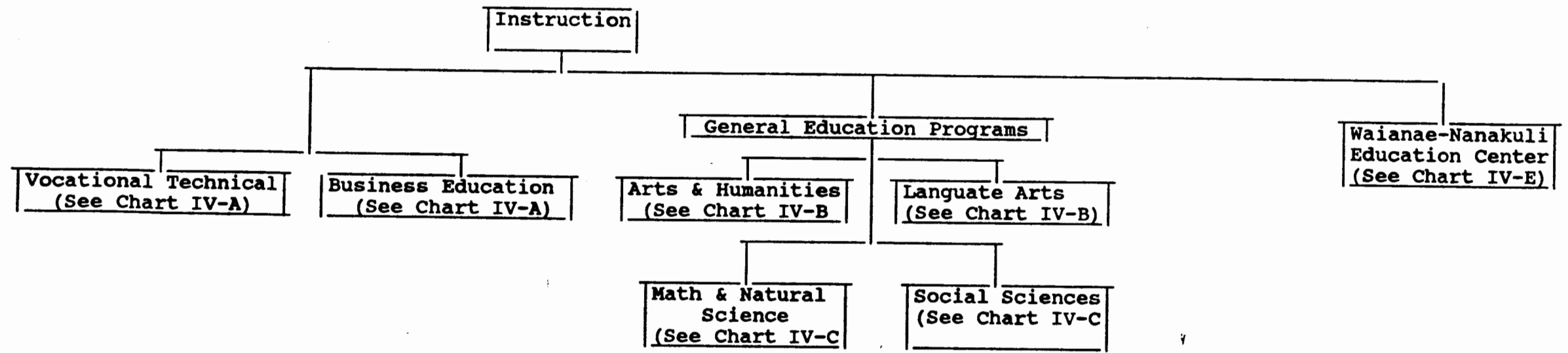
GENERAL FUNDS 4.00

**CHART UPDATED**  
**DATE** JUN 30 1991

STATE OF HAWAII  
UNIVERSITY OF HAWAII  
LEEWARD COMMUNITY COLLEGE

**INSTRUCTION**

Position Organization Chart   06/30/91  
Chart IV



STATE OF HAWAII  
UNIVERSITY OF HAWAII  
LEEWARD COMMUNITY COLLEGE

INSTRUCTION

Position Organization Chart 06/30/91

Chart IV-A

CHART UPDATED

DATE JUN 30 1991

DEAN OF INSTRUCTION

Vocational Technical

Chairperson\*

Secretary II, SR-14, #22698

Instructors Total (15.50)

Health, Phys. Ed. & Rec.

Full-time: #82731

Food Service

Full-time: #83669, #83145, #84266  
#86583, #84779

Commercial Arts

Full-time: #82697

Auto Mechanics Tech

Full-time: #82495, #84314, #83835  
#84885, #82953

Drafting Technology

Full-time: #82721, #83309  
#82530 (.5)

TV Production

Full-time: #86654

Classified

Cook I, WB-05, #27088 (W)

Business Education

Chairperson\*

Secretary II, SR-14, #17713

Instructors Total (19.50)

Accounting

Full-time: #84275, #82000, #82707  
#83865, #82461, #84621

Business

Full-time: #84589, #82326, #84157

Part-time: #84780 (.4), #82116 (.5)

Sales and Management

Full-time: #83374, #83140

Part-time: #84780 (.6)

Ofc. Admin. & Tech

Full-time: #82264, #83064, #83829  
#83983, #82400, #82489  
#83103

\*Rotating Position

GENERAL FUNDS 37.00

(W) REVOLVING FUNDS 1.00

STATE OF HAWAII  
UNIVERSITY OF HAWAII  
LEEWARD COMMUNITY COLLEGE

CHART UPDATED

DATE JUN 30 1991

General Education Programs

GENERAL EDUCATION PROGRAMS

Position Organization Charts 06/30/91

CHART IV-B

Math & Natural Sciences  
Chart IV-C

Social Sciences  
See Chart IV-C

Arts & Humanities

Chairperson\*

Secretary II, SR-14, #17711

Instructors Total (23.10)

Art

Full-time: #82890, #82247, #82502, #84086

Music

Full-time: #82239, #84426, #84014

Part-time: #83636 (.5), #82116A (.5)

Dance

Part-time: #83636 (.5)

Drama & Theatre

Full-time: #83105

Part-time: #83181 (.5)

Philosophy

Full-time: #82941, #83907

Religion

Full-time: #83808

Part-time: #82021 (.6)

History

Full-time: #84018, #84026, #82581, #82306,  
#83474, #83887

Part-time: #84104 (.8)

Humanities

Full-time: #82427, #86688

Part-time: #83181 (.5), #84104 (.2)

Language Arts

Chairperson\*

Secretary II, SR-14, #17710

Instructors Total (38.0)

English

Full-time: #82960, #83945, #84027, #83850, #84181

#84602, #84653, #84883, #83472, #83570

#83605, #83697, #82129, #82409, #82498

#82570, #82932, #86399, #83210, #86789

#86790, #86791, #86842, #86843, #86844

Part-time: #83607 (.75), #84098 (.4), #84490 (.4)

Asian Pacific Languages

Full-time: #82692, #83442, #82888

Part-time: #84098 (.6)

Journalism

Part-time: #84490 (.6)

European Language

Full-time: #82165, #82645, #82872

Part-time: #83607 (.25)

English as a Second Language

Full-time: #84555

Speech

Full-time: #82496, #82273

Communication

Full-time: #84606

# General Education Programs

STATE OF HAWAII  
UNIVERSITY OF HAWAII  
LEEWARD COMMUNITY COLLEGE

CHART UPDATED

DATE JUN 30 1991

GENERAL EDUCATION PROGRAMS

Position Organization Chart

06/30/91

Arts & Humanities  
See Chart IV-B

Language Arts  
See Chart IV-B

Chart IV-C

## Math & Sciences

### Chairperson\*

Secretary II, SR-14, #17712

Instructors Total (32.0)

#### Biological Science

Full-time: #82225, #84384, #84679, #82134

Part-time: #84849 (.2)

#### Mathematics

Full-time: #82024, #82522, #84776, #82470, #83055, #82845  
#84429, #82035, #84777, #83965, #86642\*\*

Part-time: #83660 (.4)

#### Chemistry

Full-time: #83218, #82085, #82517

Part-time: #84160 (.8)

#### Oceanography

Full-time: #83248

Part-time: #84849 (.8), #83847 (.2)

#### Physical Science

Full-time: #82277, #82670, #82404

Part-time: #83847 (.8), #83660, (.6)

#### Science

Part-time: #84160 (.2)

#### Data Processing

Full-time: #82986, #83161, #84557, #84069

## Social Sciences

### Chairperson\*

Secretary II, SR-14, #19604

Instructors Total (16.40)

#### Psychology

Full-time: #83104

Part-time: #82017 (.8), #82799 (.8)

#84466 (.8), #82691 (.6)

#### Anthropology

Full-time: #83464, #83615

#### Economics

Full-time: #83369, #83129, #83759

Part-time: #84441 (.6)

#### Geography

Full-time: #83466

#### Political Science

Full-time: #84634

#### Social Science

Part-time: #84358 (.2)

#### Sociology

Part-time: #84358 (.8), #82021 (.4), #84441 (.4),  
#82543 (.6)

#### Human Development

Part-time: #82017 (.2), #82799 (.2)

#### Human Services

Full-time: #82029

Part-time: #82691 (.4), #82543 (.4), #84466 (.2)

\*Rotating Position

\*\*Administratively assigned to Waianae-Nanakuli Education Center

GENERAL FUNDS 50.40

STATE OF HAWAII  
UNIVERSITY OF HAWAII  
LEEWARD COMMUNITY COLLEGE

ACADEMIC SUPPORT

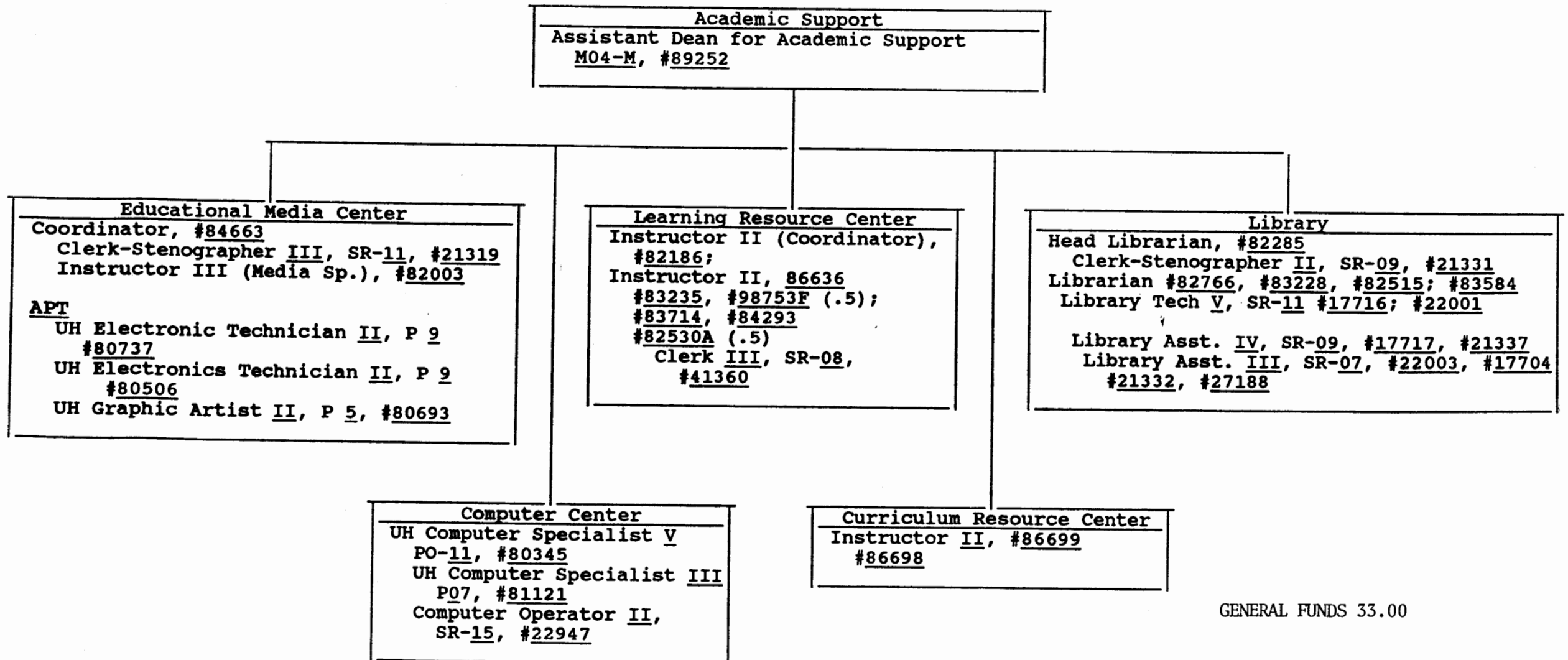
Position Organization Chart

06/30/91

Chart IV-D

CHART UPDATED

DATE JUN 30 1991



GENERAL FUNDS 33.00



**CHART UPDATED**  
**DATE** JUN 30 1991

STATE OF HAWAII  
UNIVERSITY OF HAWAII  
LEEWARD COMMUNITY COLLEGE

INSTRUCTION  
Waianae-Nanakuli Instruction

Position Organization Chart

06/30/91

Chart IV-E

<u>Waianae-Nanakuli Education Center</u>	
Coordinator*	(1.0)
Clerk Steno <u>II</u> , SR <u>09</u> , # <u>26797</u> ,	(1.0)
Educ. Spec. <u>I</u> , P <u>03</u> , # <u>81032</u> ,	(1.0)
Instructors (2.0) #	

\*Rotating faculty position; administratively assigned

#Rotating faculty positions from divisions

GENERAL FUNDS 2.00

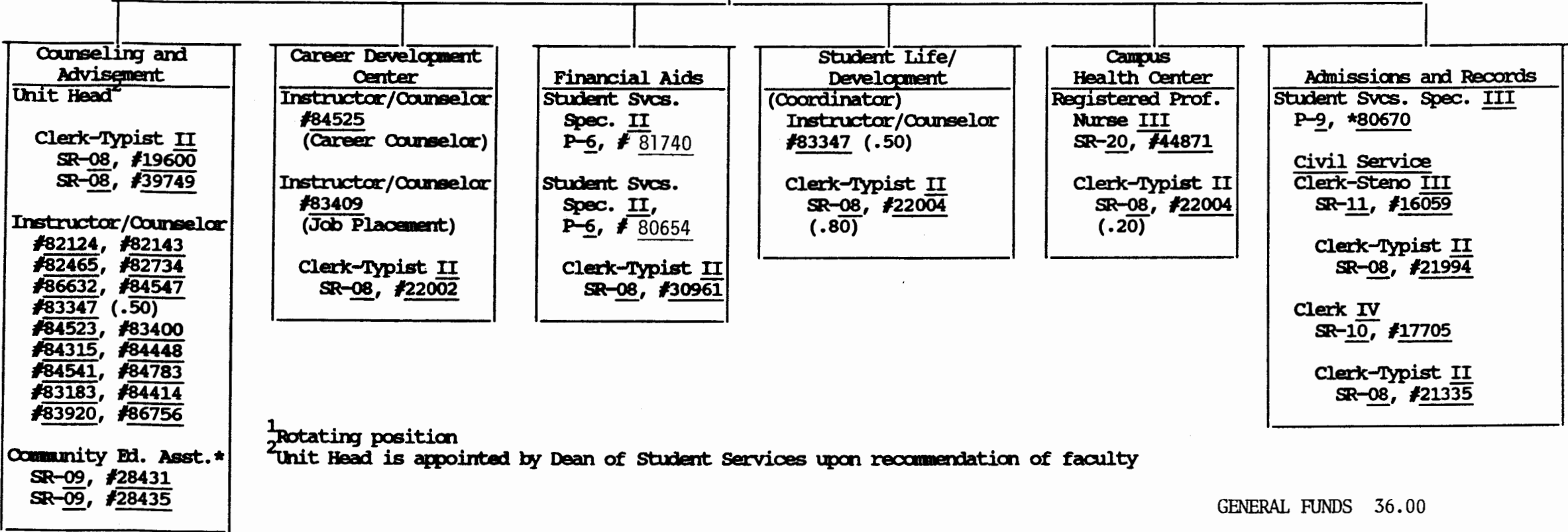
CHART UPDATED

DATE JUN 30 1991

Student Services
Dean of Student Services
M04-M, #89004

Coordinator of Student Services <sup>1</sup>
---

Secretary II
SR-14, #22948



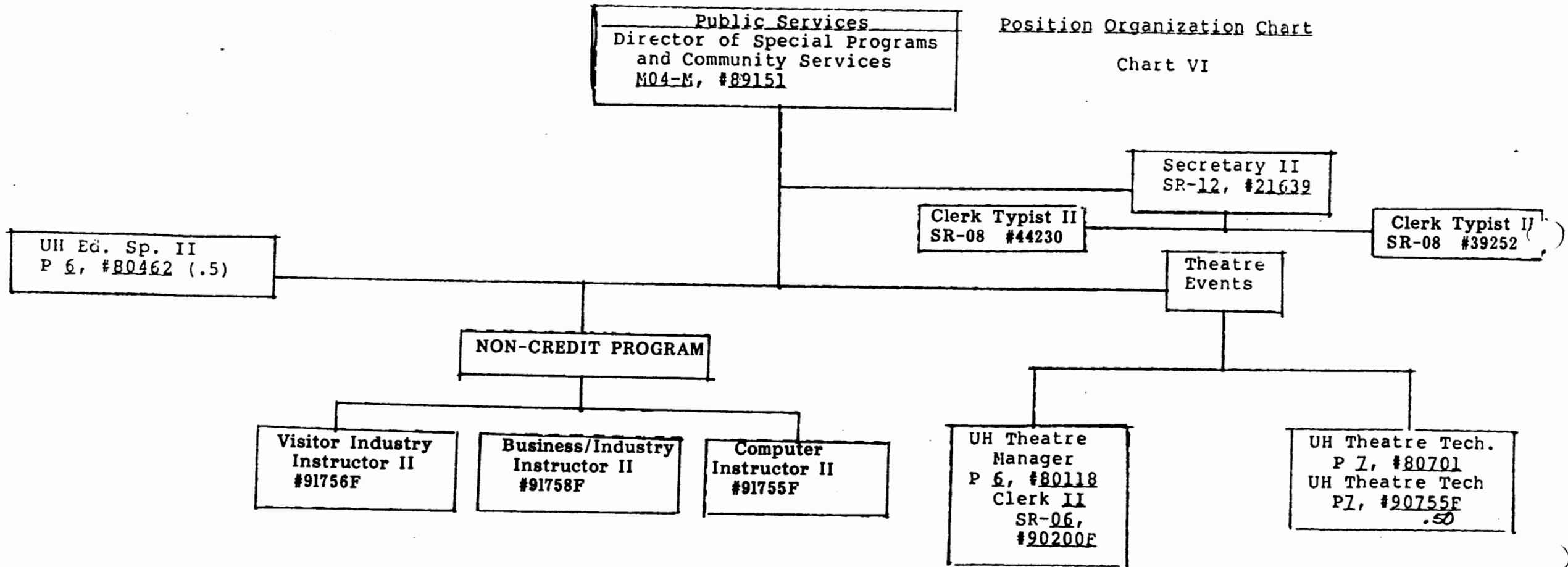
GENERAL FUNDS 36.00

\*Assigned to Waianae-Nanakuli Education Center

UNIVERSITY OF HAWAII  
LEEWARD COMMUNITY COLLEGE  
EDUCATIONAL SERVICES

Position Organization Chart

Chart VI



*Michael D. V. A.*  
Chancellor for Community Colleges

July 1, 1991  
Effective Date

STATE OF HAWAII  
UNIVERSITY OF HAWAII  
LEEWARD COMMUNITY COLLEGE  
EDUCATIONAL SERVICES

Position Organization Chart

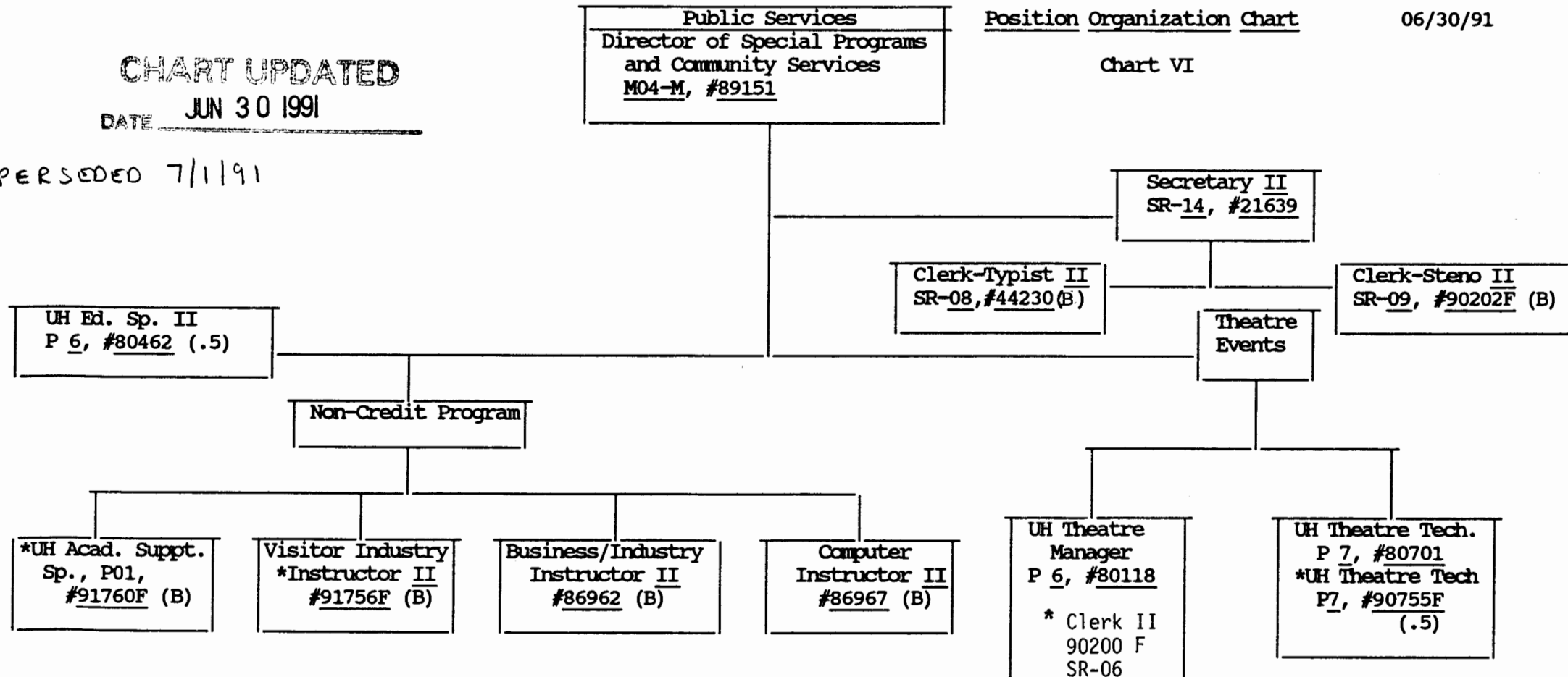
06/30/91

Chart VI

CHART UPDATED

DATE JUN 30 1991

SUPERSEDED 7/1/91



\*Pending establishment: UH Acad. Suppt. Spec., #91760F  
Instructor II, #91756F  
Clerk II, #90200F  
UH Theatre Tech., #90755F

B = Special Funds

GENERAL FUNDS 6.00

(B) SPECIAL FUNDS 6.00

STATE OF HAWAII  
UNIVERSITY OF HAWAII  
LEEWARD COMMUNITY COLLEGE

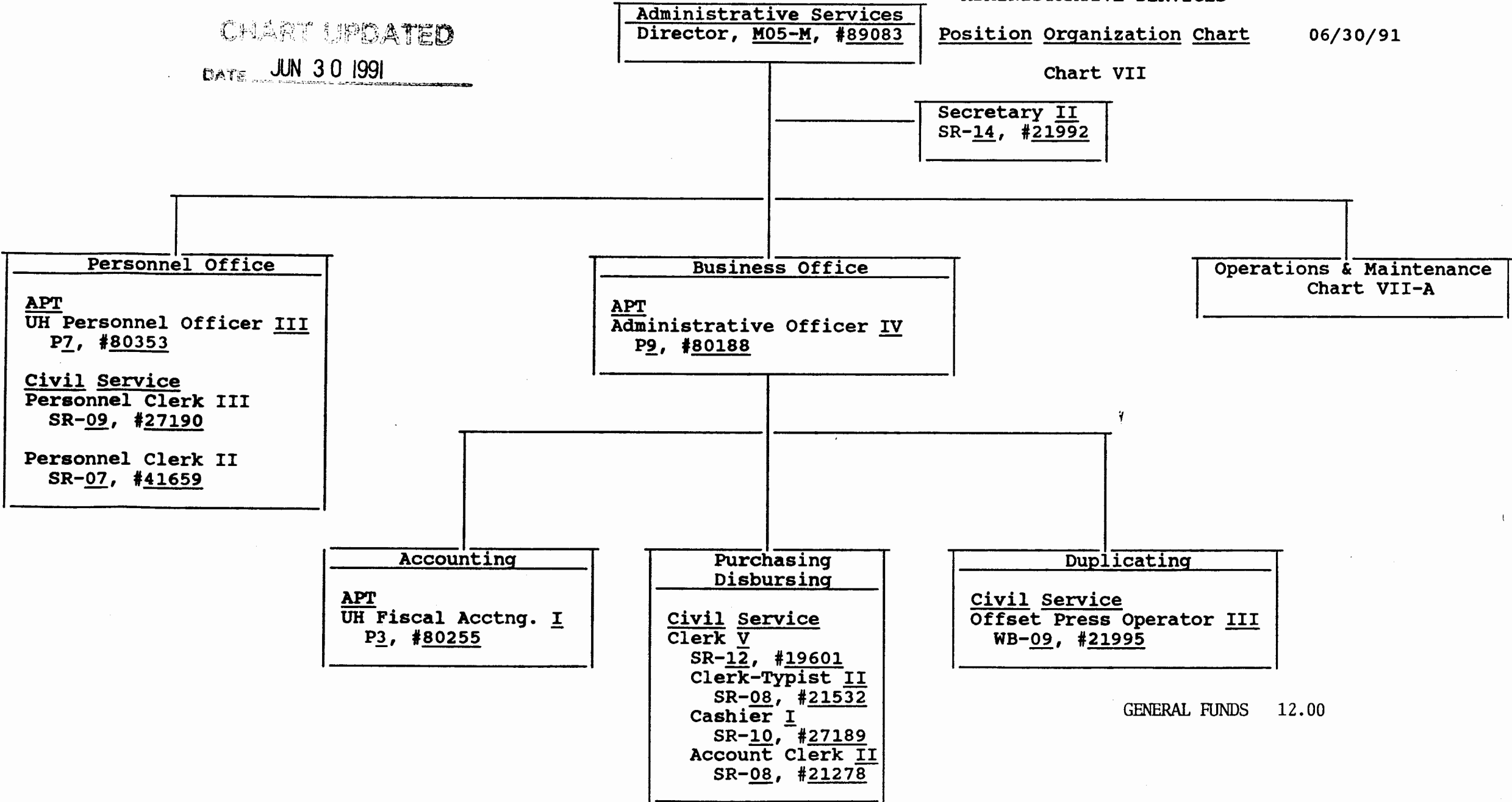
ADMINISTRATIVE SERVICES

Position Organization Chart 06/30/91

Chart VII

CHART UPDATED

DATE JUN 30 1991

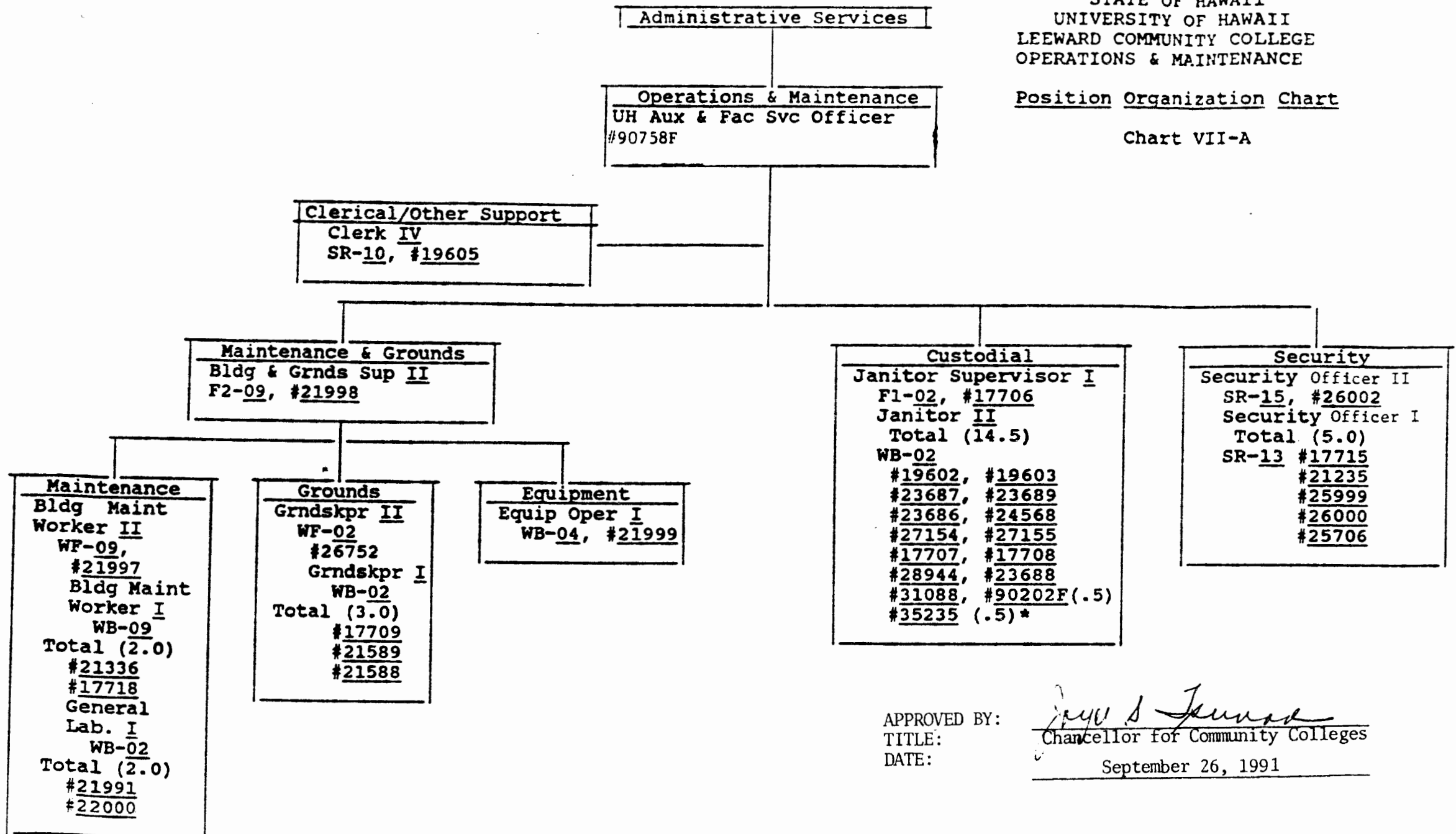


GENERAL FUNDS 12.00

STATE OF HAWAII  
UNIVERSITY OF HAWAII  
LEEWARD COMMUNITY COLLEGE  
OPERATIONS & MAINTENANCE

Position Organization Chart

Chart VII-A



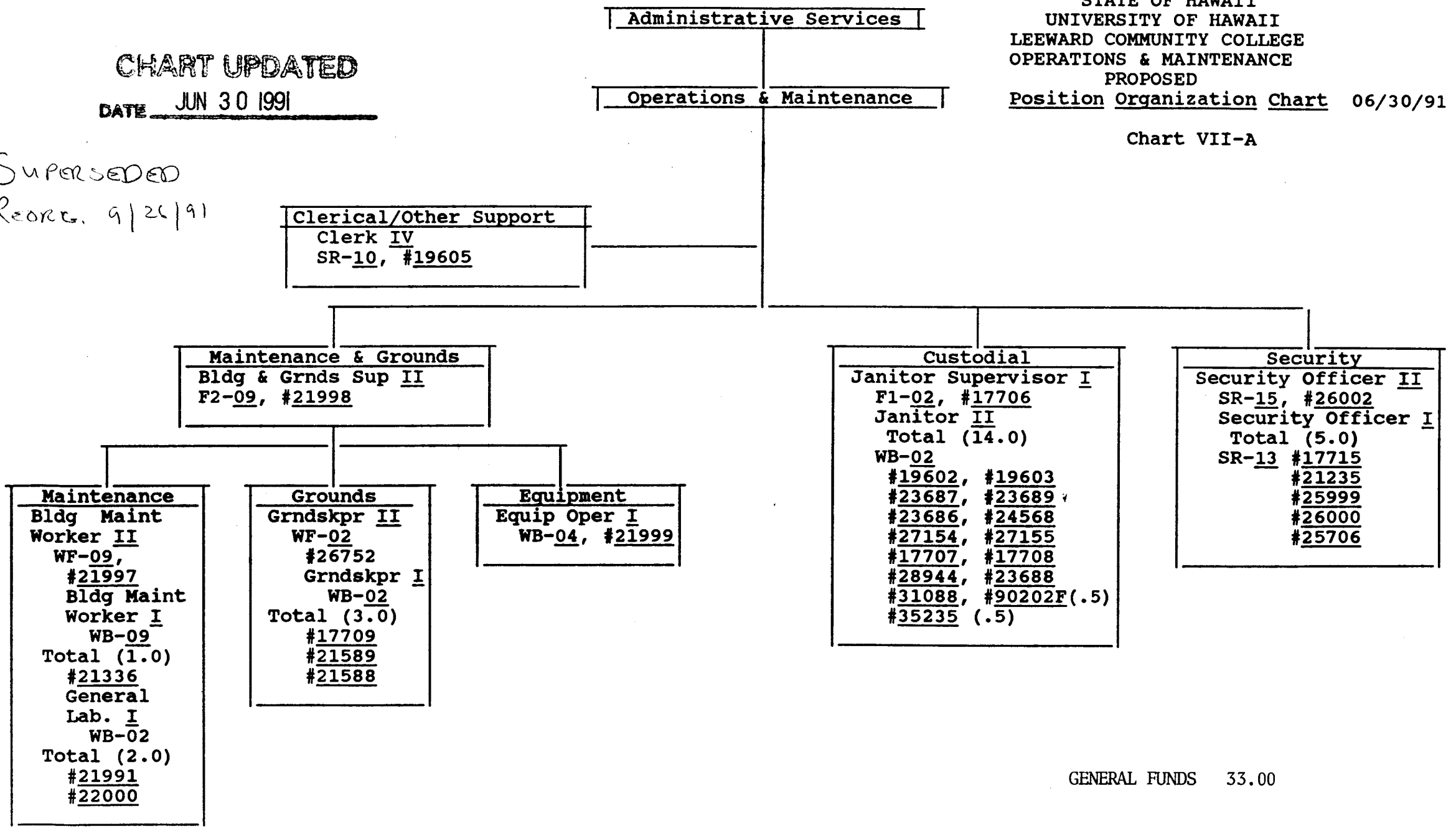
APPROVED BY:  
TITLE:  
DATE:

*Jay S. Jansen*  
Chancellor for Community Colleges  
September 26, 1991

CHART UPDATED  
DATE JUN 30 1991

SUPERSEDED  
Reorg. 9/20/91

STATE OF HAWAII  
UNIVERSITY OF HAWAII  
LEEWARD COMMUNITY COLLEGE  
OPERATIONS & MAINTENANCE  
PROPOSED  
Position Organization Chart 06/30/91  
Chart VII-A



GENERAL FUNDS 33.00

\*\*Pending establishment - UH Auxiliary & Facility Officer III P7, #90758F