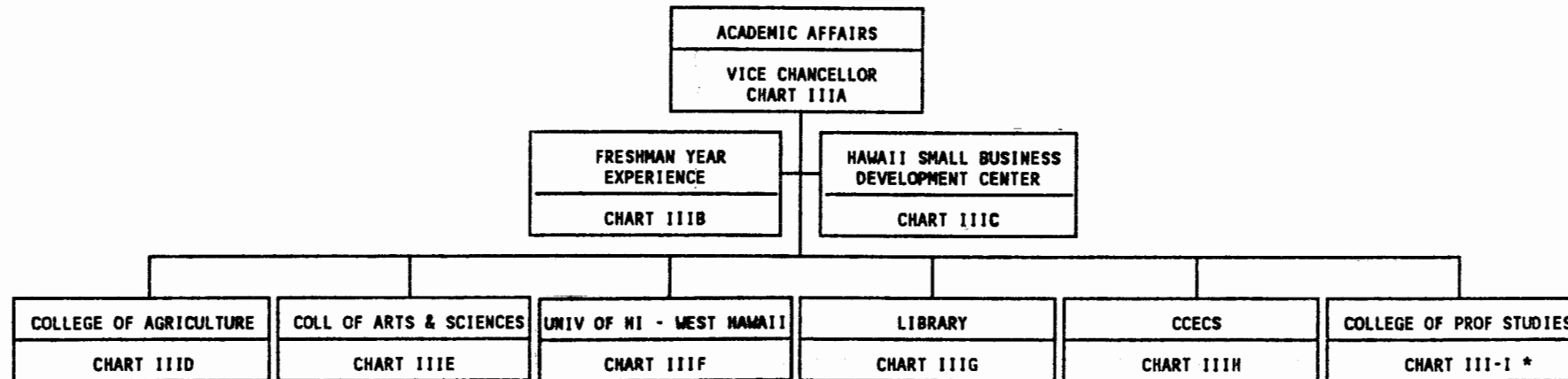


PROPOSED

STATE OF HAWAII - UNIVERSITY OF HAWAII
UNIVERSITY OF HAWAII AT HILO
ACADEMIC AFFAIRS
POSITION ORGANIZATION CHART III



* PROPOSED

ACADEM.DWG

APPROVED BY THE UNIVERSITY
BOARD OF REGENTS

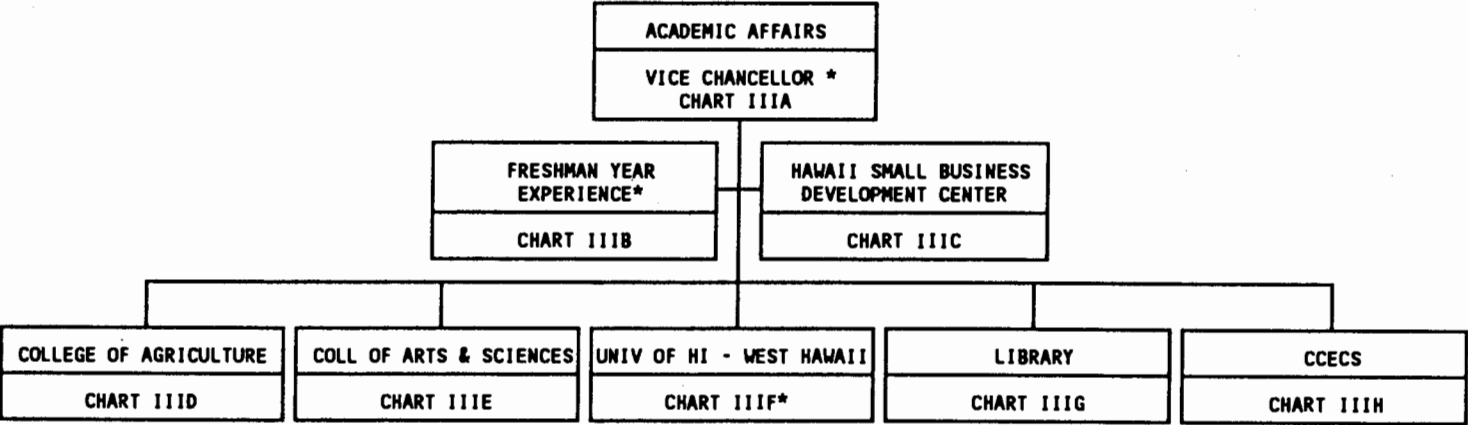
NOV 22 1992

Date

PROPOSED CHART

STATE OF HAWAII - UNIVERSITY OF HAWAII
UNIVERSITY OF HAWAII AT HILO
ACADEMIC AFFAIRS
POSITION ORGANIZATION CHART III

SUPERSEDED
REORG. 5/22/92



* PROPOSED

ACADEM.DWG

APPROVED BY THE UNIVERSITY
BOARD OF REGENTS
JUL 19 1991
Date

PROPOSED CHART

STATE OF HAWAII - UNIVERSITY OF HAWAII
UNIVERSITY OF HAWAII AT HILO
ACADEMIC AFFAIRS - VICE CHANCELLOR
POSITION ORGANIZATION CHART-CHART IIIA

ACADEMIC AFFAIRS
VICE CHANCELLOR * PRIVATE SECRETARY I, SR20 *

* PROPOSED POSITION

APPROVED BY THE UNIVERSITY
BOARD OF REGENTS

JUL 19 1991

Date

POSITIONS
GENERAL FUND - 2.00

VCACADEM.DWG

PROPOSED CHART

STATE OF HAWAII - UNIVERSITY OF HAWAII
UNIVERSITY OF HAWAII AT HILO
ACADEMIC AFFAIRS - FRESH. YR. EXP.
POSITION ORGANIZATION CHART I11B

FRESHMAN YEAR EXPERIENCE
DIRECTOR* CLERK STENO II, SR09, (0.50 FTE)*

* PROPOSED POSITION

APPROVED BY THE UNIVERSITY
BOARD OF REGENTS

JUL 19 1991

Date

POSITIONS
GENERAL FUND - 1.50

FRESHYR.DWG

PROPOSED CHART

STATE OF HAWAII - UNIVERSITY OF HAWAII
UNIVERSITY OF HAWAII AT HILO
HAWAII SMALL BUSINESS DEVELOPMENT CTR
POSITION ORGANIZATION CHART IIIC

*HAWAII SMALL BUSINESS DEVELOPMENT CENTER
DIRECTOR KAUAI DIRECTOR OAHU DIRECTOR MAUI DIRECTOR HAWAII ISLAND DIRECTOR

POSITIONS
* RCUH FUNDS - 5.0

SMALLBUS.DWG

APPROVED BY THE UNIVERSITY
BOARD OF REGENTS

JUL 19 1991
Date

PROPOSED CHART

STATE OF HAWAII - UNIVERSITY OF HAWAII
UNIVERSITY OF HAWAII AT HILO
INSTRUCTION - COLLEGE OF AGRICULTURE
POSITION ORGANIZATION CHART-CHART IIID

INSTRUCTION
DEAN, M08, #89096
SECRETARY III, SR16, #26665
CLERK-STENO II, SR09, #40306
RESEARCH TECH VI, SR18, #32316
RESEARCH TECH IV, SR14, #34036
UH EDUCATIONAL SP II, P06, #81161

INSTRUCTIONAL POSITIONS (11.00 FTE)		
FULL-TIME:		
82298	82684	83716
84071	84320	84766
84767	84768	84867
85809	86381	
UH RESEARCH ASSOC., P01 #81093 (0.25)		

POSITIONS
GENERAL FUND - 17.25

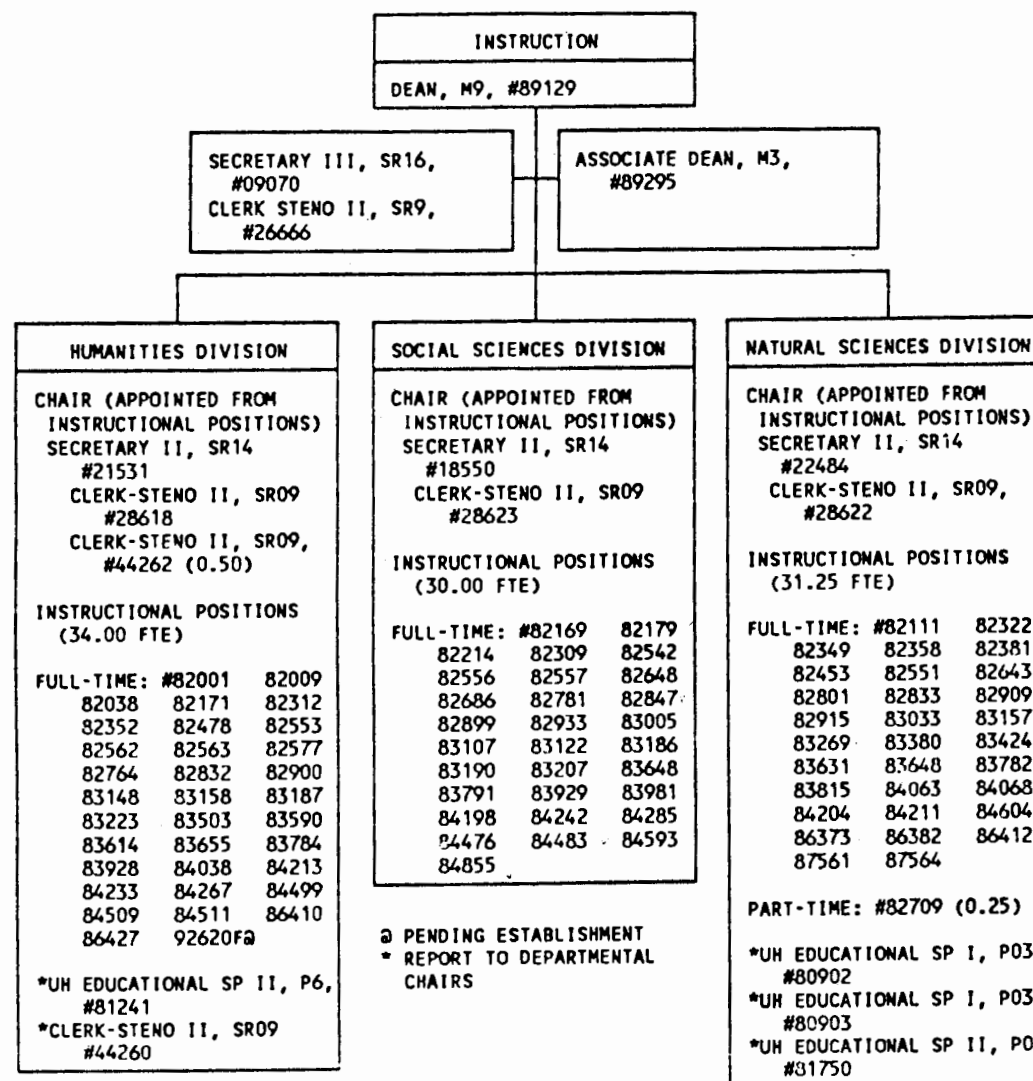
AGRI.DWG

APPROVED BY THE UNIVERSITY
BOARD OF REGENTS

JUL 19 1991

Date

PROPOSED



PURSUANT TO BOARD OF REGENTS' ACTION

DATE **NOV 22 1982**

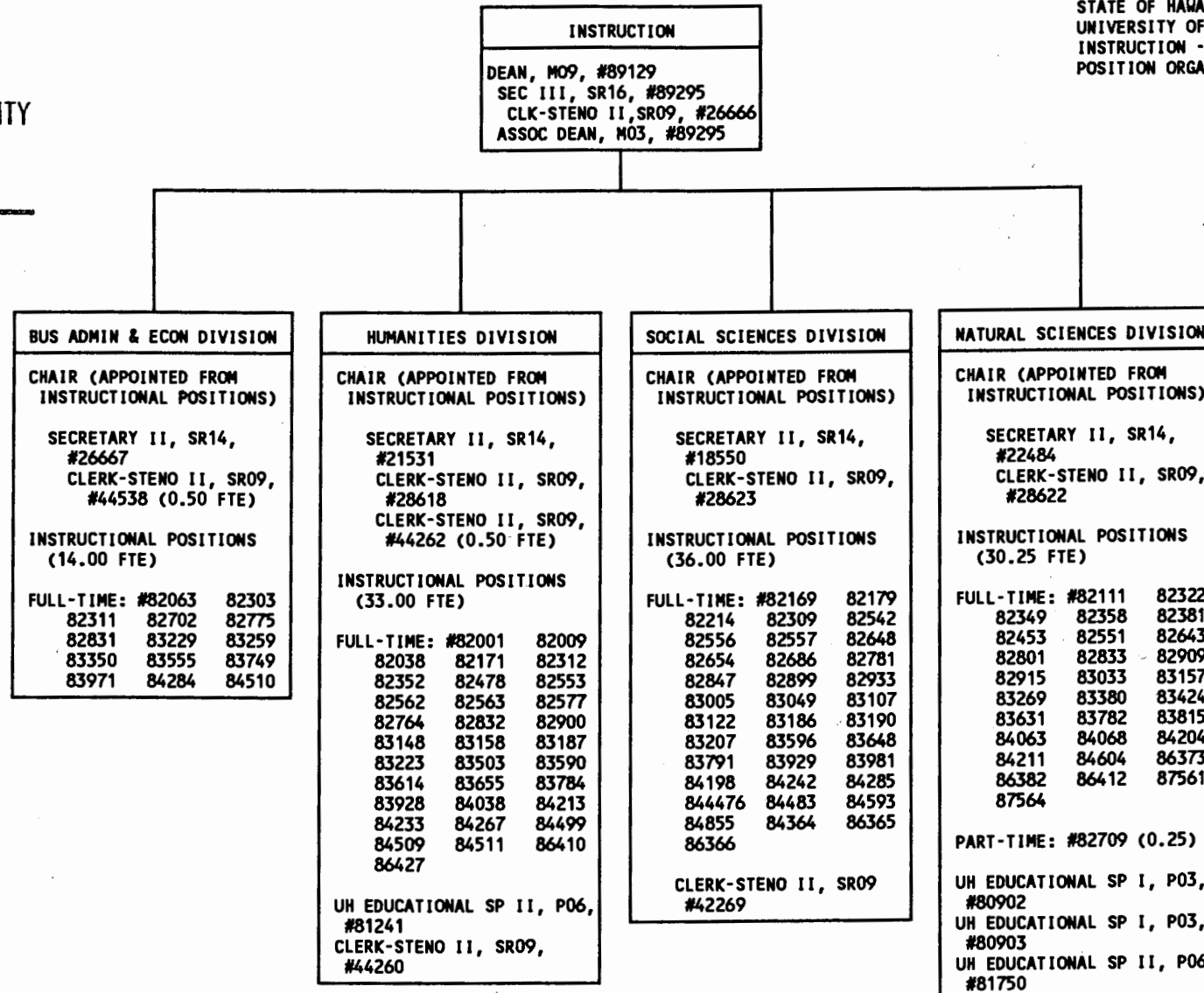
PROPOSED CHART

APPROVED BY THE UNIVERSITY
BOARD OF REGENTS

JUL 19 1991
Date

SUPERSEDED
REORG. 5/22/92

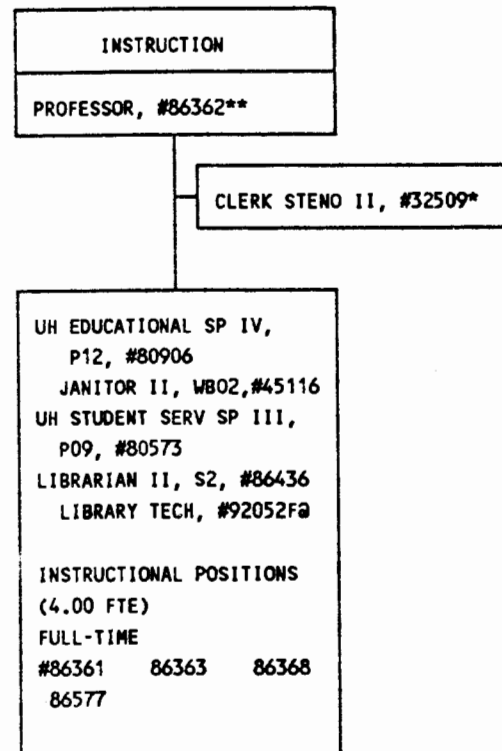
STATE OF HAWAII - UNIVERSITY OF HAWAII
UNIVERSITY OF HAWAII AT HILO
INSTRUCTION - COLLEGE OF ARTS & SCIENCE
POSITION ORGANIZATION CHART - CHART IIIIE



POSITIONS
GENERAL FUND - 131.25

ARTS.DWG

STATE OF HAWAII - UNIVERSITY OF HAWAII
 UNIVERSITY OF HAWAII AT HILO
 INSTRUCTION - UNIVERSITY OF HAWAII AT WEST HAWAII
 POSITION ORGANIZATION CHART-CHART IIIF



APPROVED:

Edward J. Krumm

TITLE:

Sr. V.P. and Chancellor

DATE:

5/15/92

POSITIONS

GENERAL FUND - 10.00
 SPECIAL FUND - 1.00

* Special Fund
 ** Proposed reclassification - Director of UH West Hawaii
 @ Pending establishment

WESTHI.DWG

PROPOSED CHART

STATE OF HAWAII - UNIVERSITY OF HAWAII
UNIVERSITY OF HAWAII AT HILO
INSTRUCTION - UNIVERSITY OF HAWAII - WEST HAWAII
POSITION ORGANIZATION CHART-CHART III F

Positions
General Fund - 7.00

SUPERSEDED
Reorg. 5/15/92

INSTRUCTION	
86362	Asso. Prof. **
UH EDUCATIONAL SP III, P09, #80906	
UH STUDENT SERV SP III, P09, #80573	
INSTRUCTIONAL POSITIONS (4.00 FTE)	
FULL-TIME	
#86361 *	86363a
86368a	86577a

- * PROPOSED POSITION TRANSFER FROM CAS INSTRUCTIONAL POSITIONS
- a PROPOSED POSITION TRANSFER FROM HCC INSTRUCTIONAL POSITIONS
- ** Proposed reclassification - Director of UH West Hawaii (position transfer from CAS instructional positions)

WESTHI.DWG

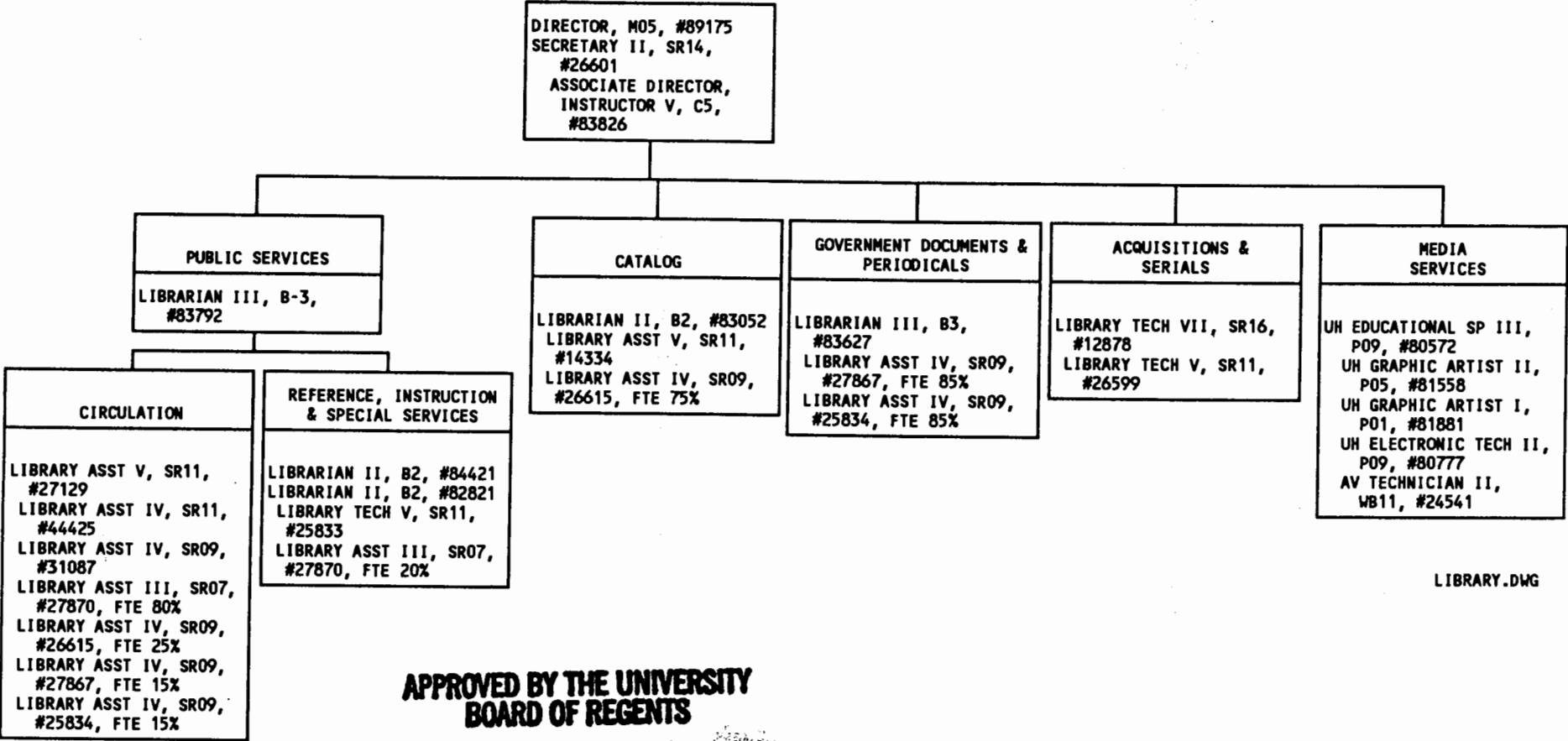
APPROVED BY THE UNIVERSITY
BOARD OF REGENTS

JUL 15 1991

Date

PROPOSED CHART

STATE OF HAWAII - UNIVERSITY OF HAWAII
UNIVERSITY OF HAWAII AT HILO
LIBRARY SERVICES
POSITION ORGANIZATION CHART-CHART 111G



LIBRARY.DWG

APPROVED BY THE UNIVERSITY
BOARD OF REGENTS

JUL 19 1991

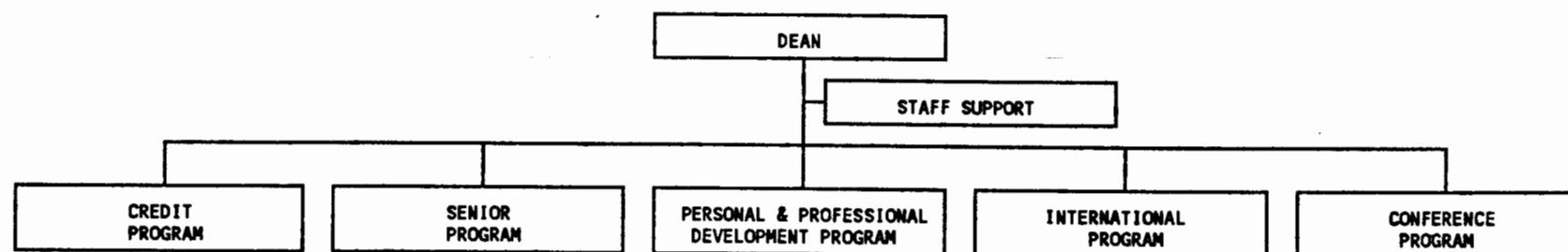
Date

POSITIONS
GENERAL FUND - 24.00

STATE OF HAWAII -UNIVERSITY OF HAWAII
UNIVERSITY OF HAWAII AT HILO
ACADEMIC AFFAIRS
CONTINUING EDUCATION & COMM. SERVICE

PROPOSED

ORGANIZATIONAL CHART



APPROVED BY THE UNIVERSITY
BOARD OF REGENTS
JAN 19 1992

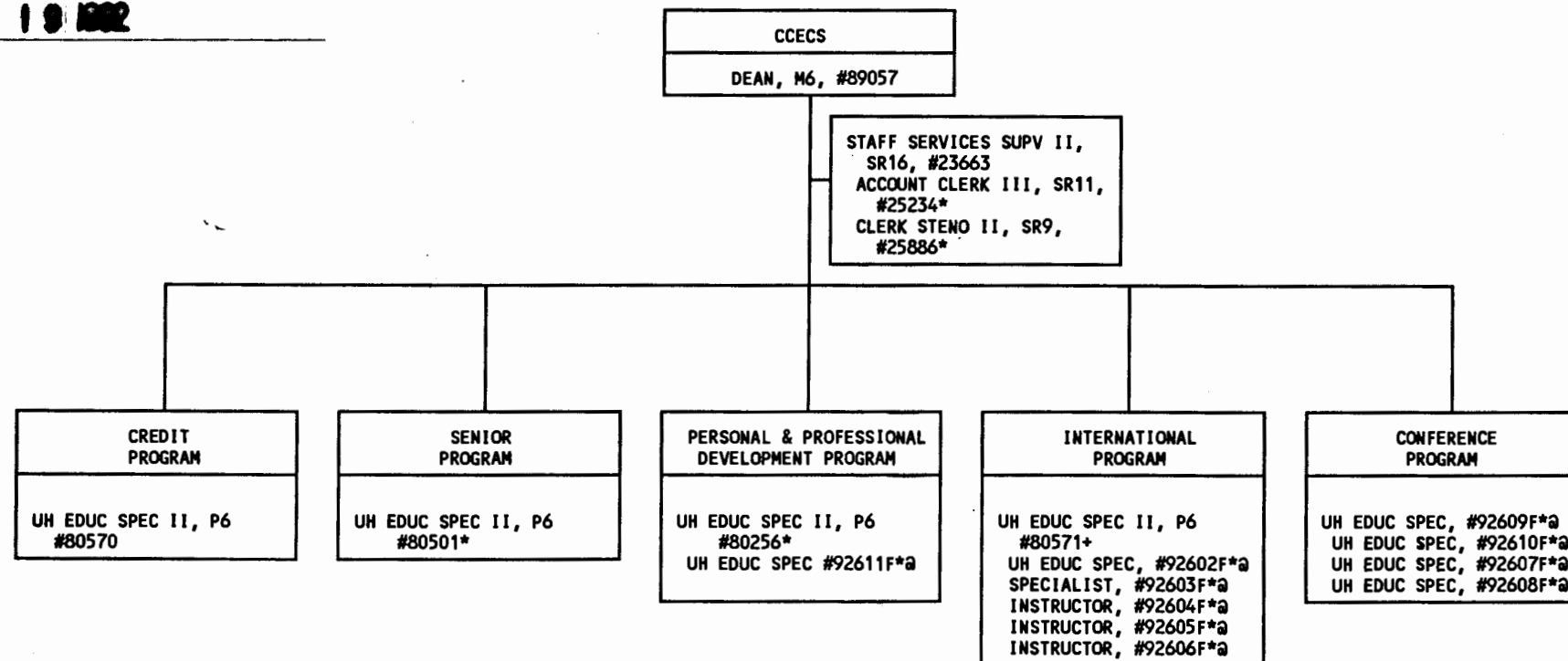
1515

PROPOSED

STATE OF HAWAII - UNIVERSITY OF HAWAII
UNIVERSITY OF HAWAII AT HILO
CONTINUING EDUCATION & COMM SERVICE
POSITION ORGANIZATION CHART - CHART III

PURSUANT TO BOARD OF REGENTS' ACTION

DATE JUN 19 1992



POSITIONS
GENERAL FUND - 4.00
SPECIAL FUND - 14.00*

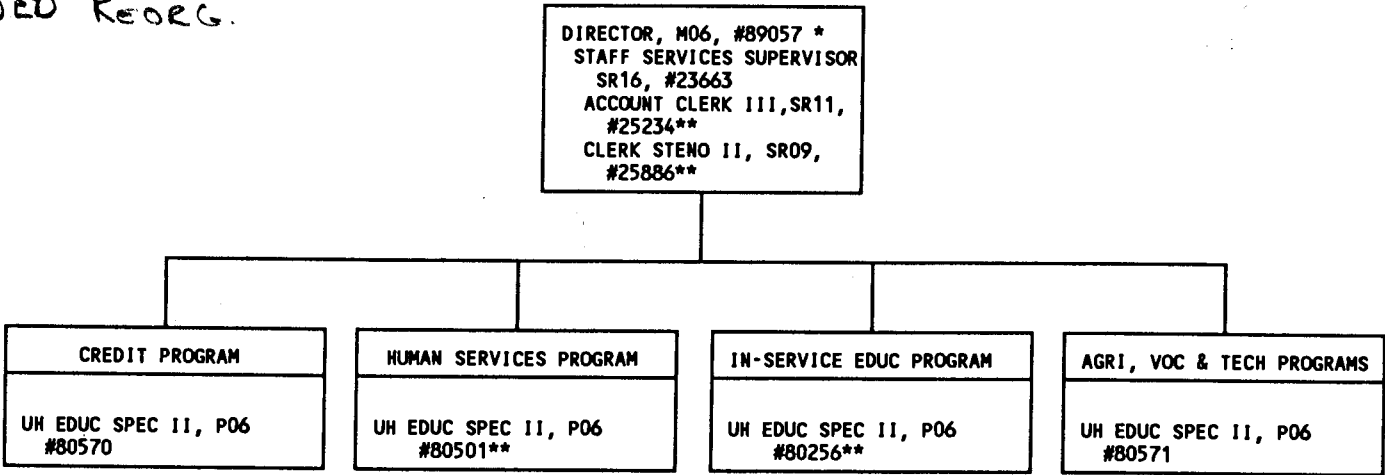
* PENDING ESTABLISHMENT
+ PROPOSED RECLASSIFICATION
TO UH EDUCATIONAL SPEC. IV

CCECSRP.DWG

PROPOSED CHART

STATE OF HAWAII - UNIVERSITY OF HAWAII
UNIVERSITY OF HAWAII AT HILO
CONTINUING EDUCATION & COMM SERVICE
POSITION ORGANIZATION CHART-CHART 111H

SUPERSEDED Reorg.
6/19/92



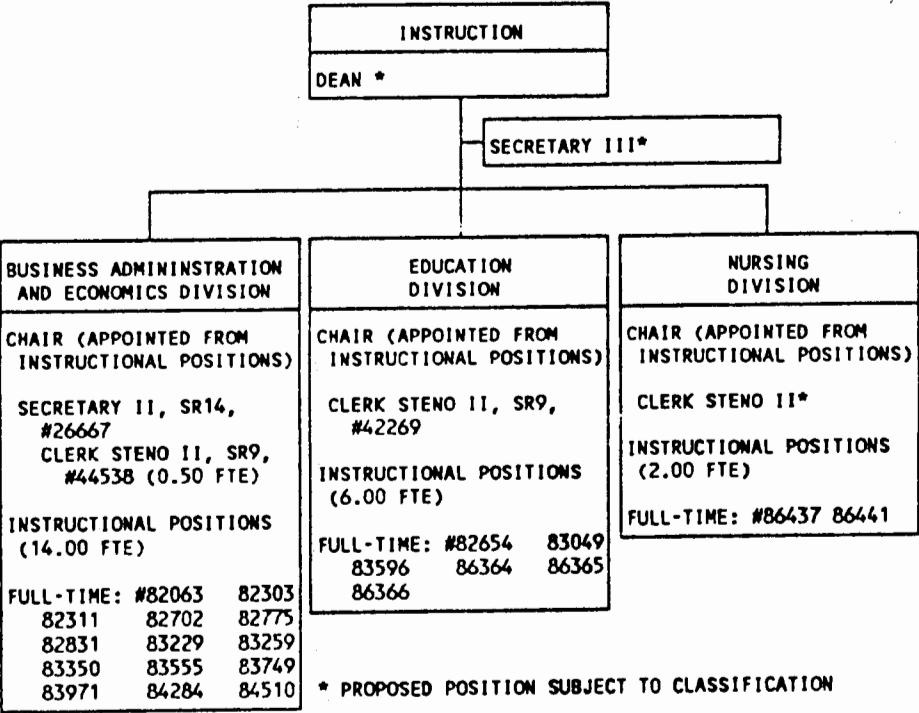
POSITIONS
GENERAL FUND - 4.00
SPECIAL FUND - 4.00**

* PROPOSED RECLASSIFICATION TO DEAN

CCECS.DWG

APPROVED BY THE UNIVERSITY
BOARD OF REGENTS
JUL 19 1991
Date

PROPOSED



* PROPOSED POSITION SUBJECT TO CLASSIFICATION

STATE OF HAWAII - UNIVERSITY OF HAWAII
UNIVERSITY OF HAWAII AT HILO
INSTRCUTION - COLLEGE OF PROF STUDIES
POSITION ORGANIZATIONA CHART III-I

PURSUANT TO BOARD OF REGENTS' ACTION

DATE **NOV 22 1992**

POSITIONS
GENERAL FUND - 27.50

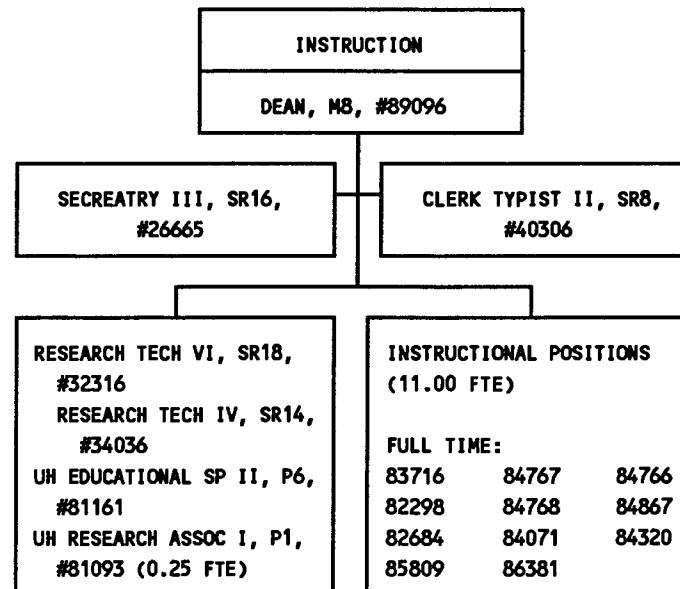
PROFSTUD.DWG

CHART UPDATED

DATE JUL 30 1991

SUPERSEDED 7/19/91

STATE OF HAWAII - UNIVERSITY OF HAWAII
UNIVERSITY OF HAWAII AT HILO
INSTRUCTION - COLLEGE OF AGRICULTURE
POSITION ORGANIZATION CHART-CHART III



POSITIONS
GENERAL FUND - 17.25

AGRI.DWG

CHART UPDATED

DATE Jul 30 1991

SUPERSEDED 7/19/91

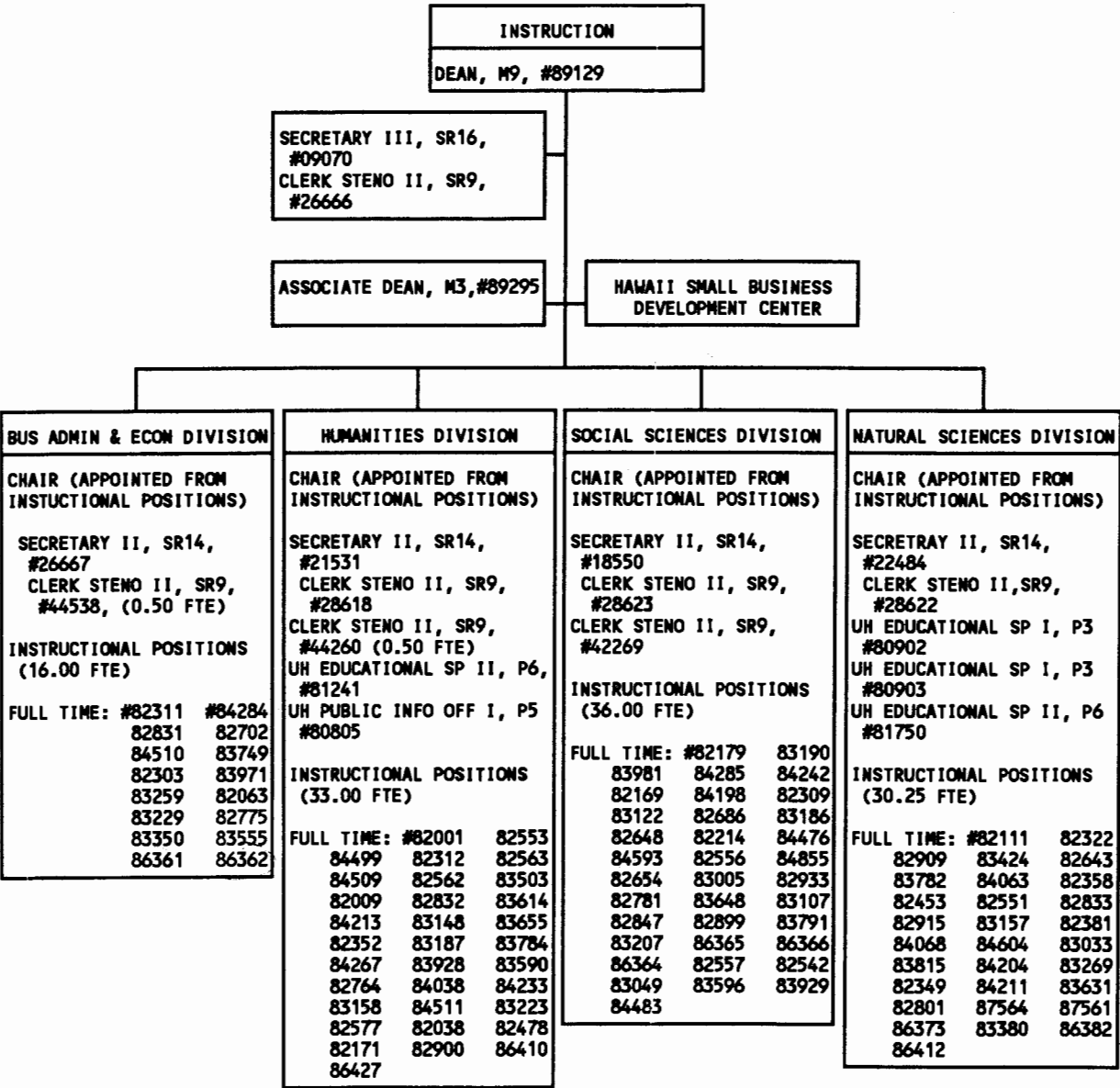
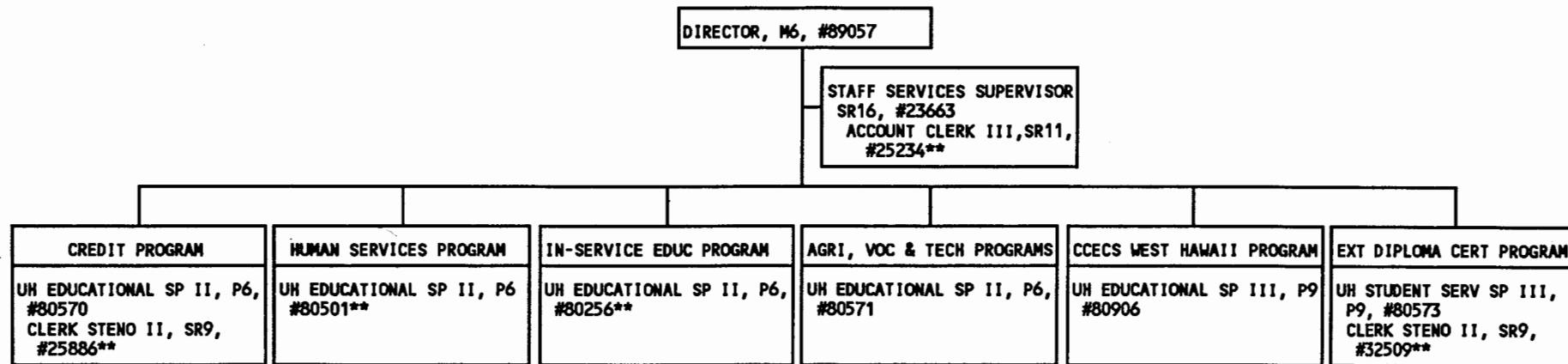


CHART UPDATED

DATE JUL 30 1991

SUPERSEDED 7/19/91

STATE OF HAWAII - UNIVERSITY OF HAWAII
UNIVERSITY OF HAWAII AT HILO
CONTINUING EDUCATION & COMM SERVICE
POSITION ORGANIZATION CHART-CHART V



POSITIONS
GENERAL FUND - 6.00
SPECIAL FUND - 5.00**

CCECS.CHT

CHART UPDATED

DATE APR 30 1991

SUPERSEDED 7/19/91

