

CHART UPDATED
DATE JUN 30 1991

STATE OF HAWAII/UNIVERSITY OF HAWAII
UNIVERSITY OF HAWAII AT MANOA
COLLEGE OF EDUCATION
ORGANIZATIONAL CHART - CHART I

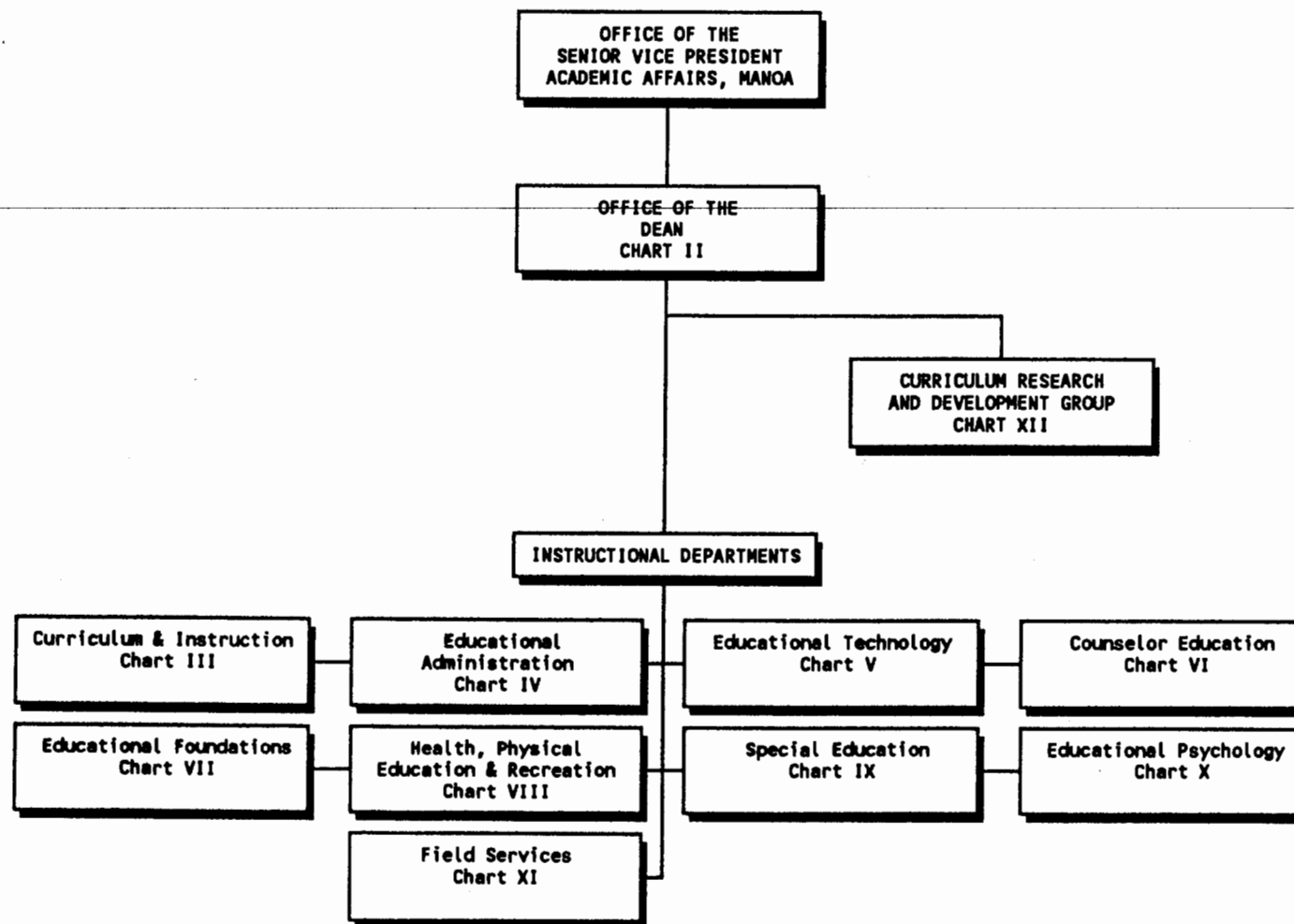
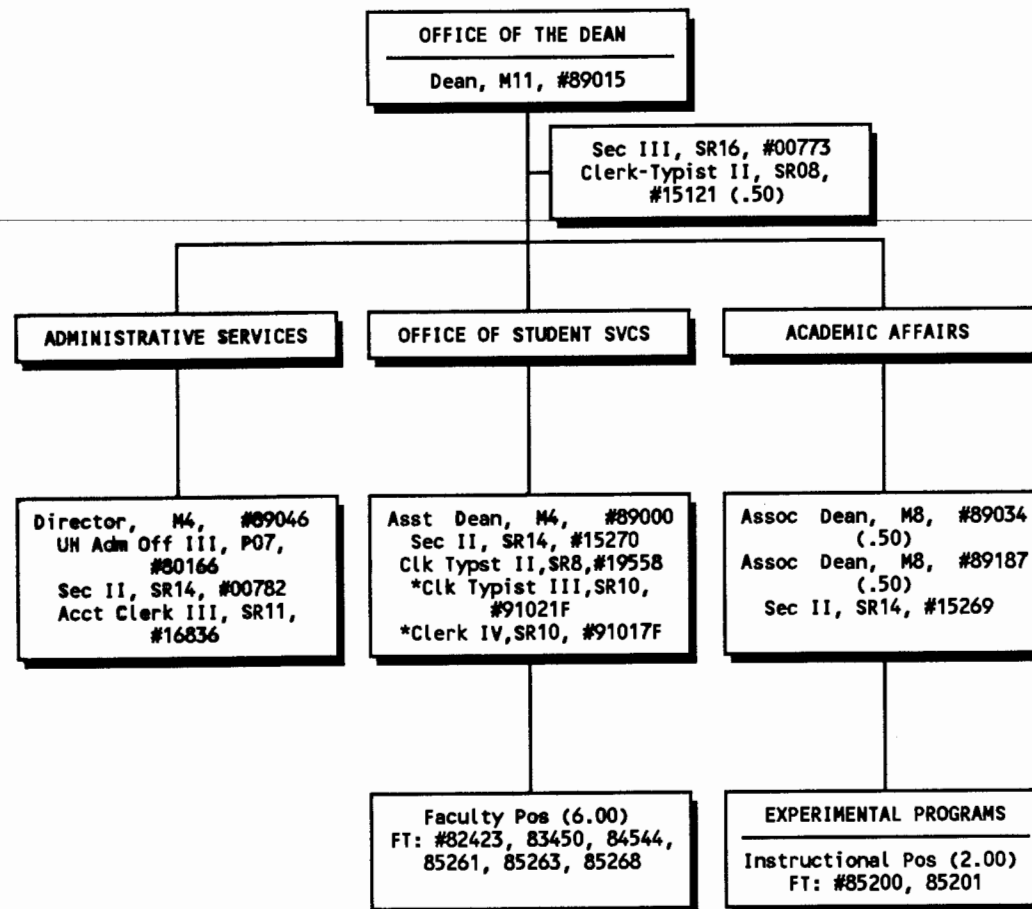


CHART UPDATED
 DATE JUN 30 1991

STATE OF HAWAII/UNIVERSITY OF HAWAII
 UNIVERSITY OF HAWAII AT MANOA
 COLLEGE OF EDUCATION
 POSITION ORGANIZATION CHART - CHART II



*Pending Establishment

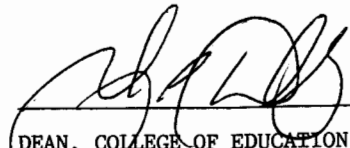
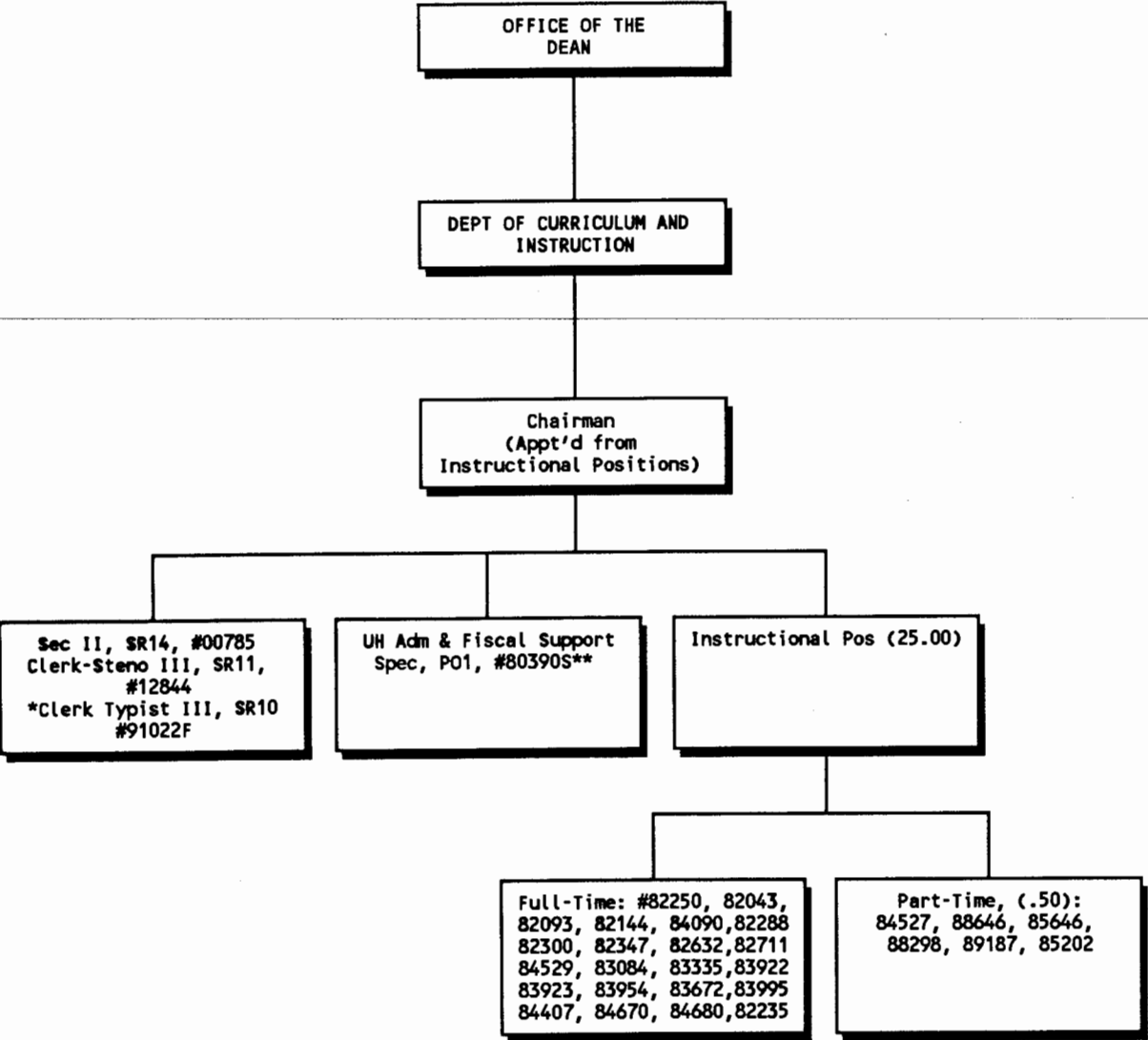

 DEAN, COLLEGE OF EDUCATION

CHART UPDATED

DATE JUN 30 1991



*Pending Establishment
**Temporary position: Center
for Economic Education

DEAN, COLLEGE OF EDUCATION

CHART UPDATED
DATE JUN 30 1991

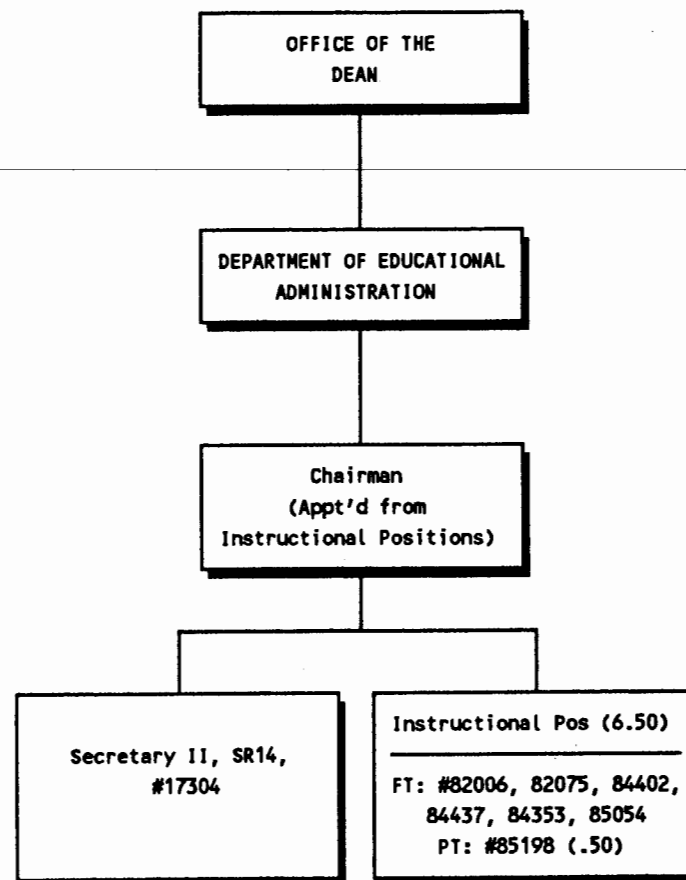
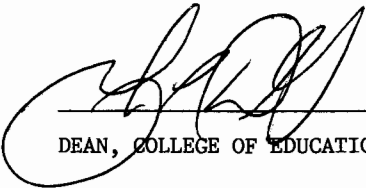
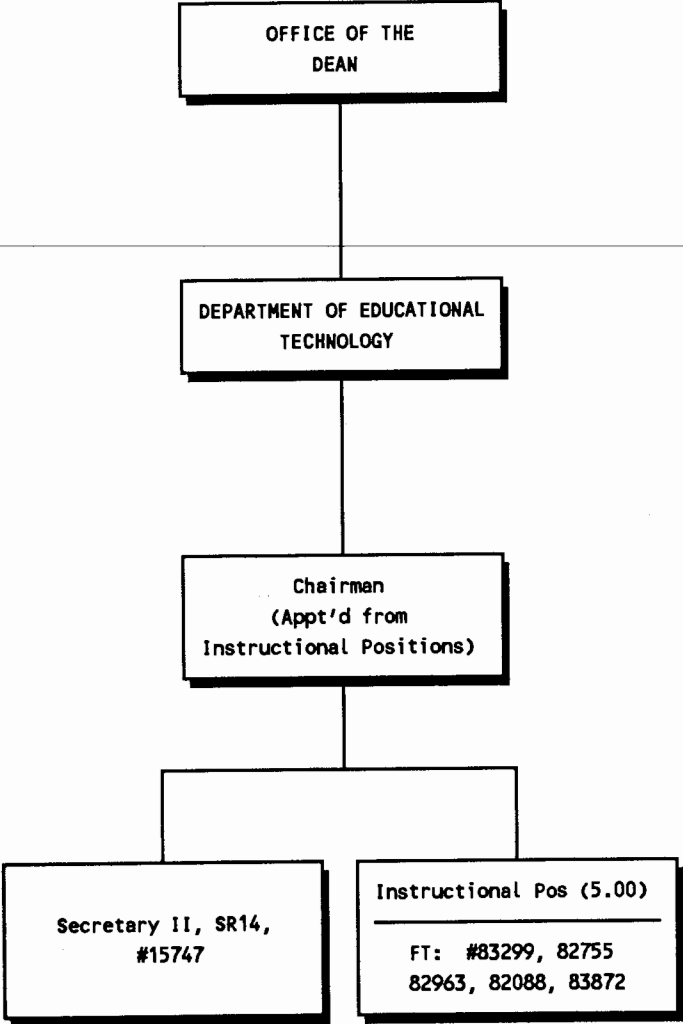


CHART UPDATED

DATE JUN 30 1991

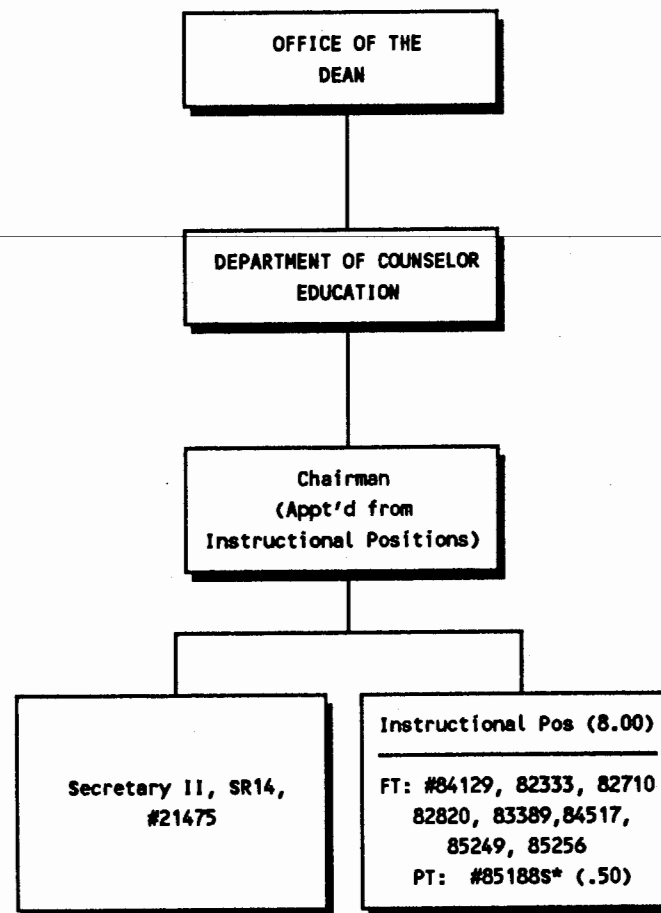
STATE OF HAWAII/UNIVERSITY OF HAWAII
UNIVERSITY OF HAWAII AT MANOA
COLLEGE OF EDUCATION
POSITION ORGANIZATION CHART - CHART V



DEAN, COLLEGE OF EDUCATION

CHART UPDATED

DATE JUN 30 1991



*Temp Grad Asst Position

CHART UPDATED
DATE JUN 30 1991

STATE OF HAWAII/UNIVERSITY OF HAWAII
UNIVERSITY OF HAWAII AT MANOA
COLLEGE OF EDUCATION
POSITION ORGANIZATION CHART - CHART VII

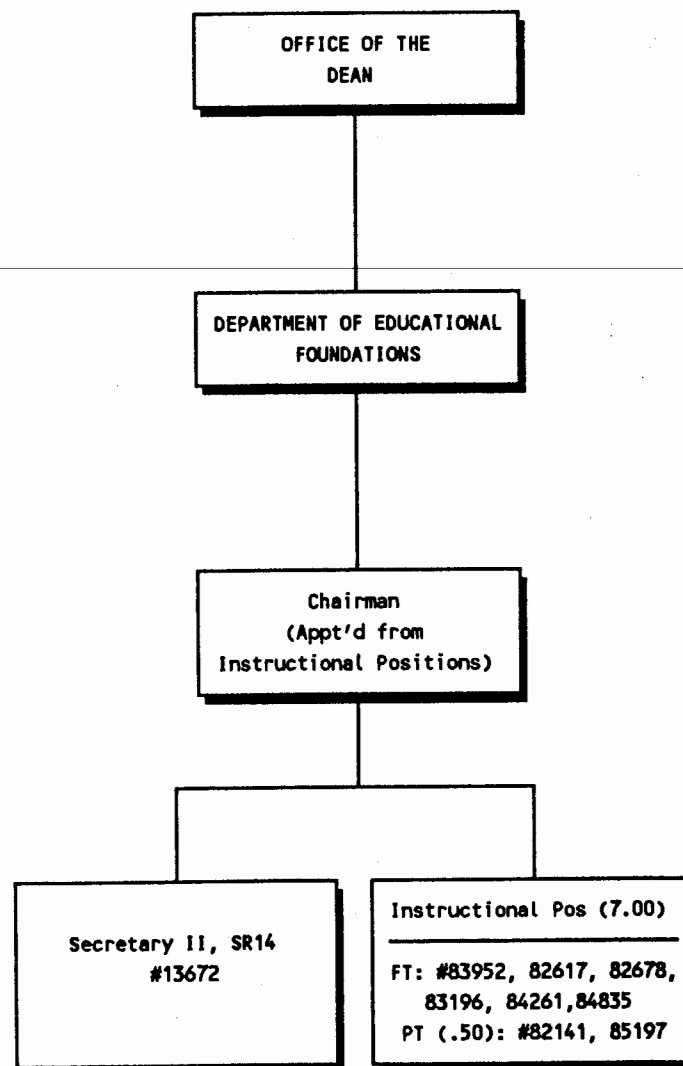


CHART UPDATED

DATE JUN 30 1991

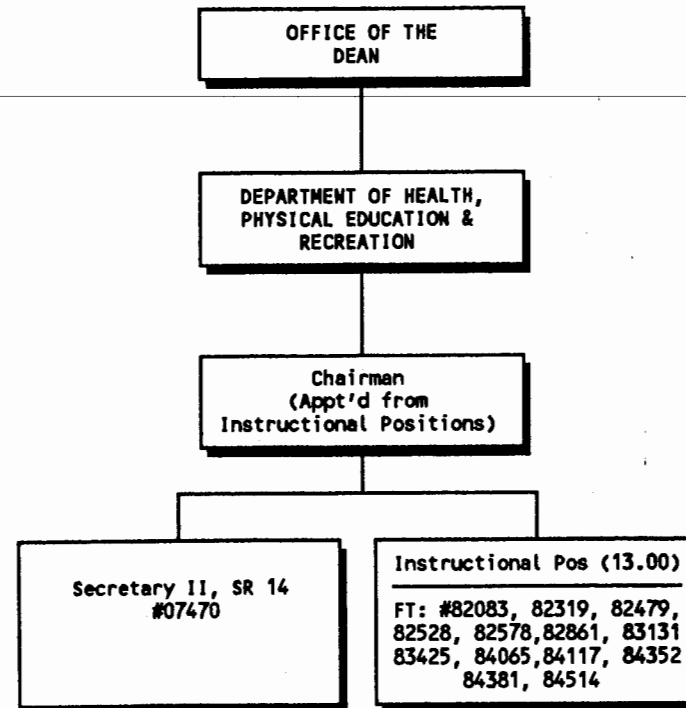


CHART UPDATED

DATE JUN 30 1991

STATE OF HAWAII/UNIVERSITY OF HAWAII
UNIVERSITY OF HAWAII AT MANOA
COLLEGE OF EDUCATION
POSITION ORGANIZATION CHART - CHART IX

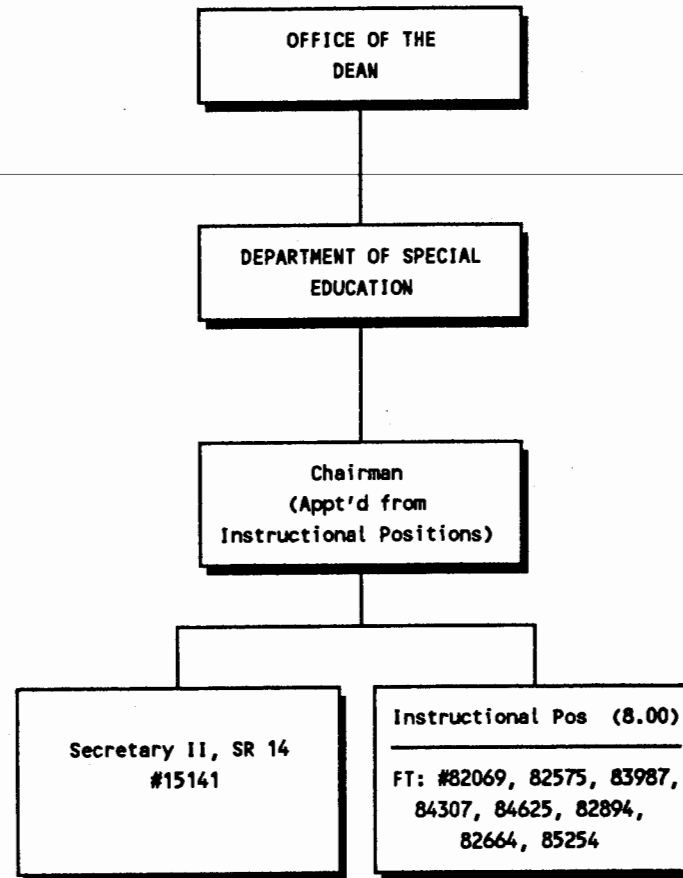


CHART UPDATED

DATE JUN 30 1991

STATE OF HAWAII/UNIVERSITY OF HAWAII
UNIVERSITY OF HAWAII AT MANOA
COLLEGE OF EDUCATION
POSITION ORGANIZATION CHART - CHART X

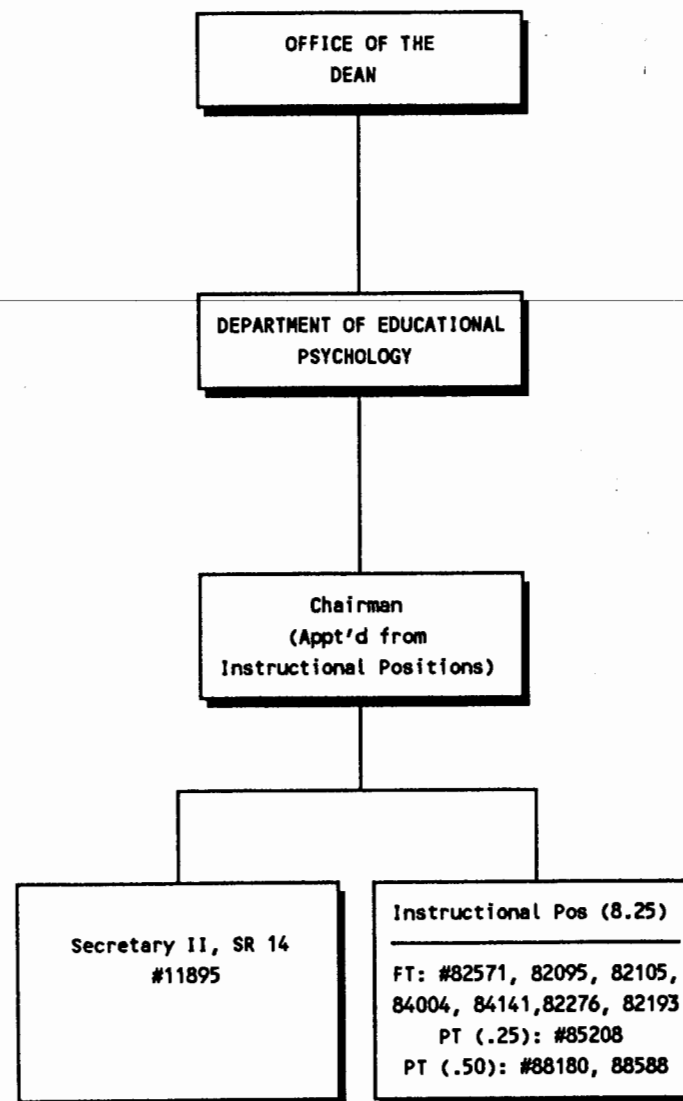
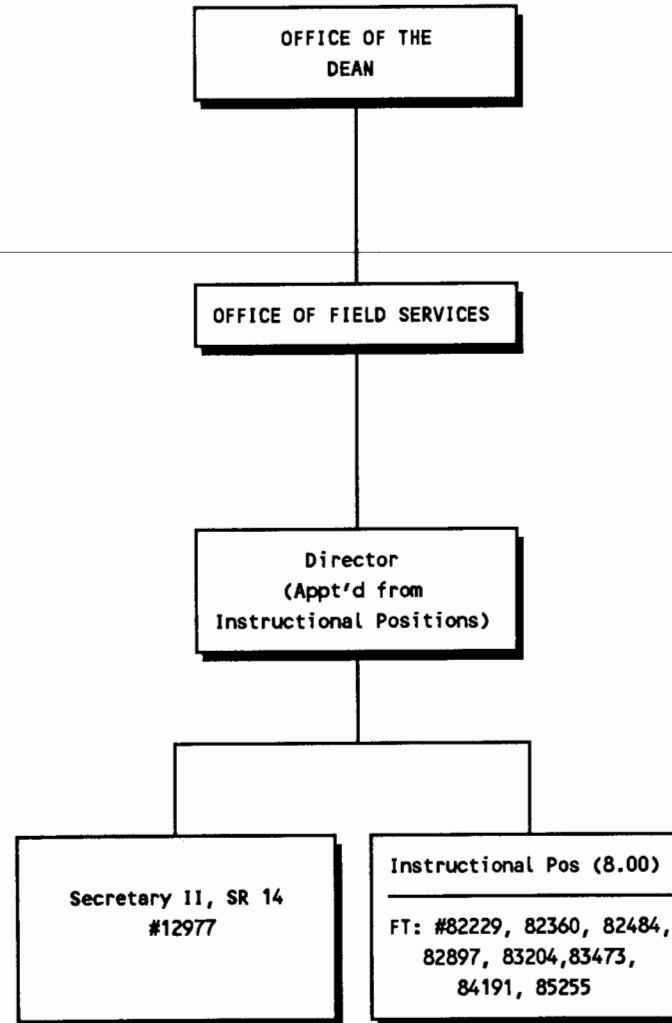


CHART UPDATED

DATE JUN 30 1991

STATE OF HAWAII/UNIVERSITY OF HAWAII
UNIVERSITY OF HAWAII AT MANOA
COLLEGE OF EDUCATION
POSITION ORGANIZATION CHART - CHART XI



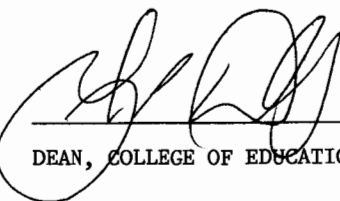

DEAN, COLLEGE OF EDUCATION

CHART UPDATED

DATE JUN 30 1991

OFFICE OF THE
DEAN

CURRICULUM RESEARCH & DEVELOPMENT
GROUP

Director, M07, #89043

UH Ed Associate VI, P13, #81169

Secretary II, SR12, #05270

UH Admin Officer IV, P09, #80167

UH Admin Officer I, P03, #81440

Account Clerk III, SR11, #03480

UNIVERSITY LABORATORY SCHOOL

CHART XIII A

LABORATORY SCHOOL CAFETERIA

Full-time: Sch Food Svc Mgr III, F2, #04945
Cook I, WB5, #05092
Cafe Helper, WB2, #08095

Part-time Cafe Helper, WB2, #13934 (.50)

STATE OF HAWAII
UNIVERSITY OF HAWAII AT MANOA
COLLEGE OF EDUCATION
CURRICULUM RESEARCH &
DEVELOPMENT GROUP

Position Organization Chart

Chart XII

RESEARCH AND DEVELOPMENT

CHART XIII B

CHART UPDATED

DATE JUN 30 1991

OFFICE OF THE
DEAN

CURRICULUM RESEARCH &
DEVELOPMENT GROUP

Director

STATE OF HAWAII
UNIVERSITY OF HAWAII AT MANOA
COLLEGE OF EDUCATION
CURRICULUM RESEARCH &
DEVELOPMENT GROUP

Position Organization Chart

CHART XIIA

UNIVERSITY LABORATORY SCHOOL

Admintr-Univ Lab Sch, M05, #89257 (.90)

Secretary II, SR12, #00783

Clerk-Typist II, SR08, #36690

Instructional Positions (1.00)

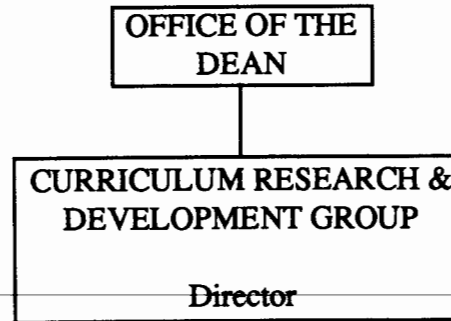
Part-time: #82154 (.20), #83227 (.05), #84608 (.10), #82160 (.15), #82793 (.20), #84377 (.30)

Administrative, Professional, Technical Positions (14.05)

Full-time: UH Ed Assoc V, P11, #80480
UH Ed Assoc IV, P09, #81170

Part-time: UH Ed Assoc VI, P13, #80435 (.15), #80470 (.20)
UH Ed Assoc V, P11, #80466 (.25), #80468 (.15), #80917 (.15)
UH Ed Assoc IV, P09, #80433 (.85), #80484 (.90), #80418 (.15), #80474 (.30), #80472 (.50), #80482 (.40), #80491 (.35)
UH Ed Assoc III, P07, #80420 (.50), #80434 (.75), #80483 (.30)
UH Ed Assoc II, P05, #80849 (.80), #80465 (.80), #80481 (.90), #80494 (.90), #80485 (.90), #80993 (.80), #81811 (.25)
UH Ed Assoc I, P03, #80464 (.80)

CHART UPDATED
JUN 30 1991
DATE _____



STATE OF HAWAII
UNIVERSITY OF HAWAII AT MANOA
COLLEGE OF EDUCATION
CURRICULUM RESEARCH &
DEVELOPMENT GROUP

Position Organization Chart

CHART XIIB

RESEARCH AND DEVELOPMENT

Instructional Positions (12.50)

Full-time: #84031, #83951, #82272, #83380, #82387, #84077, #82950

Part-time: #82141M (.50), #82154 (.80), #83227 (.95), #84608 (.90), #82793 (.80), #84377 (.70), #82160 (.85)

Admintr-Univ Lab Sch, M05, #89257 (.10)

Administrative, Professional, Technical Positions (15.95)

Full-time: UH Ed Assoc VI, P13, #80486, #80495, #80443
UH Ed Assoc V, P11, #80440
UH Ed Assoc IV, P09, #80228
UH Ed Assoc III, P07, #80476

Part-time: UH Ed Assoc IV, P13, #80470 (.80), #80435 (.85)
UH Ed Assoc V, P11, #80468 (.85), #80466 (.75), #80917 (.85)
UH Ed Assoc IV, P09, #80484 (.10), #80474 (.70), #80491 (.65), #80418 (.85), #80472 (.50), #80433 (.15), #80482 (.60)
UH Ed Assoc III, P07, #80420 (.50), #80483 (.70)
UH Ed Assoc II, P05, #80465 (.20), #80849 (.20), #80481 (.10), #80485 (.10), #80993 (.20), #80494 (.10)
UH Ed Assoc I, P03, #80464 (.20)

Clerk-Typist III, SR10, #35206