

CHART UPDATED

DATE JUN 30 1991

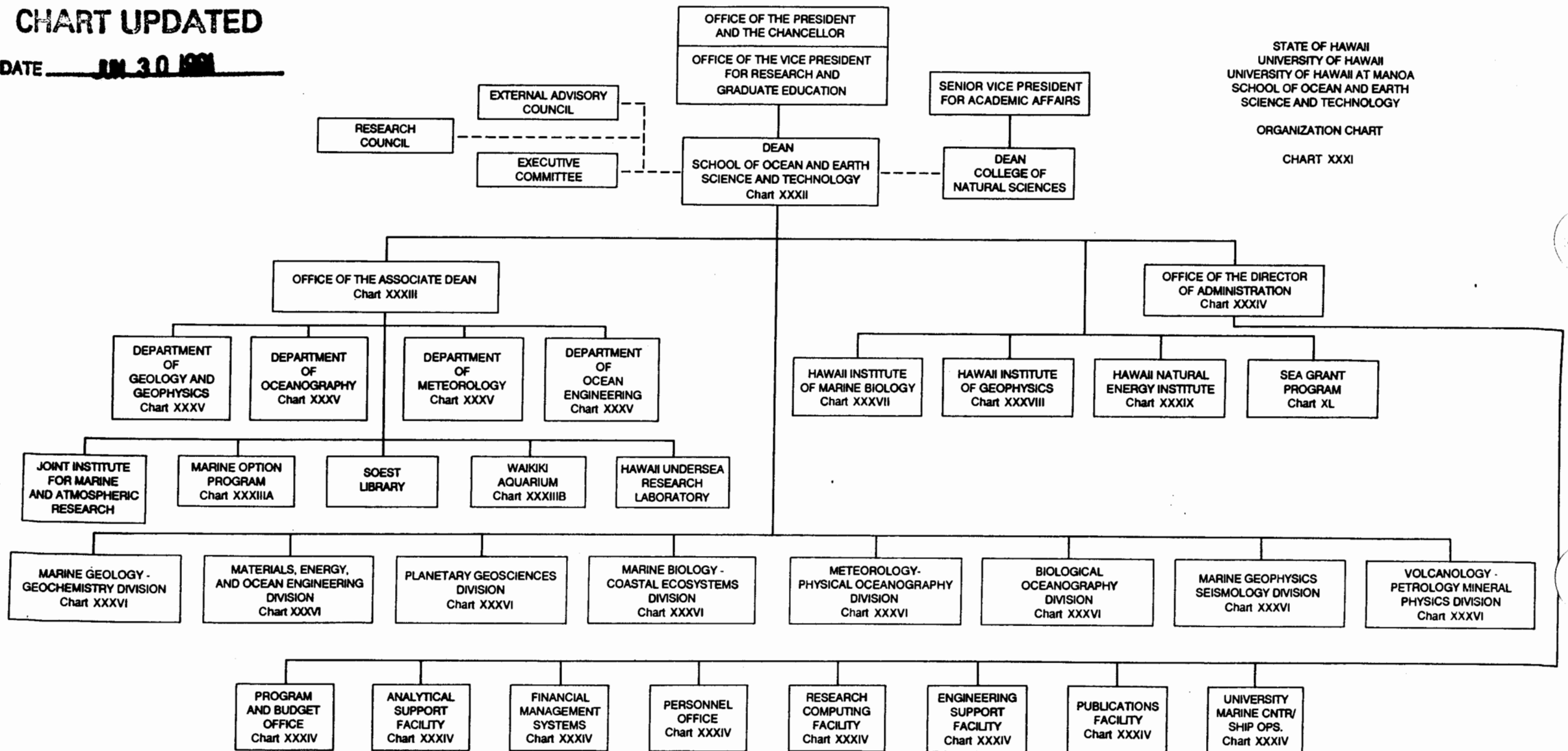


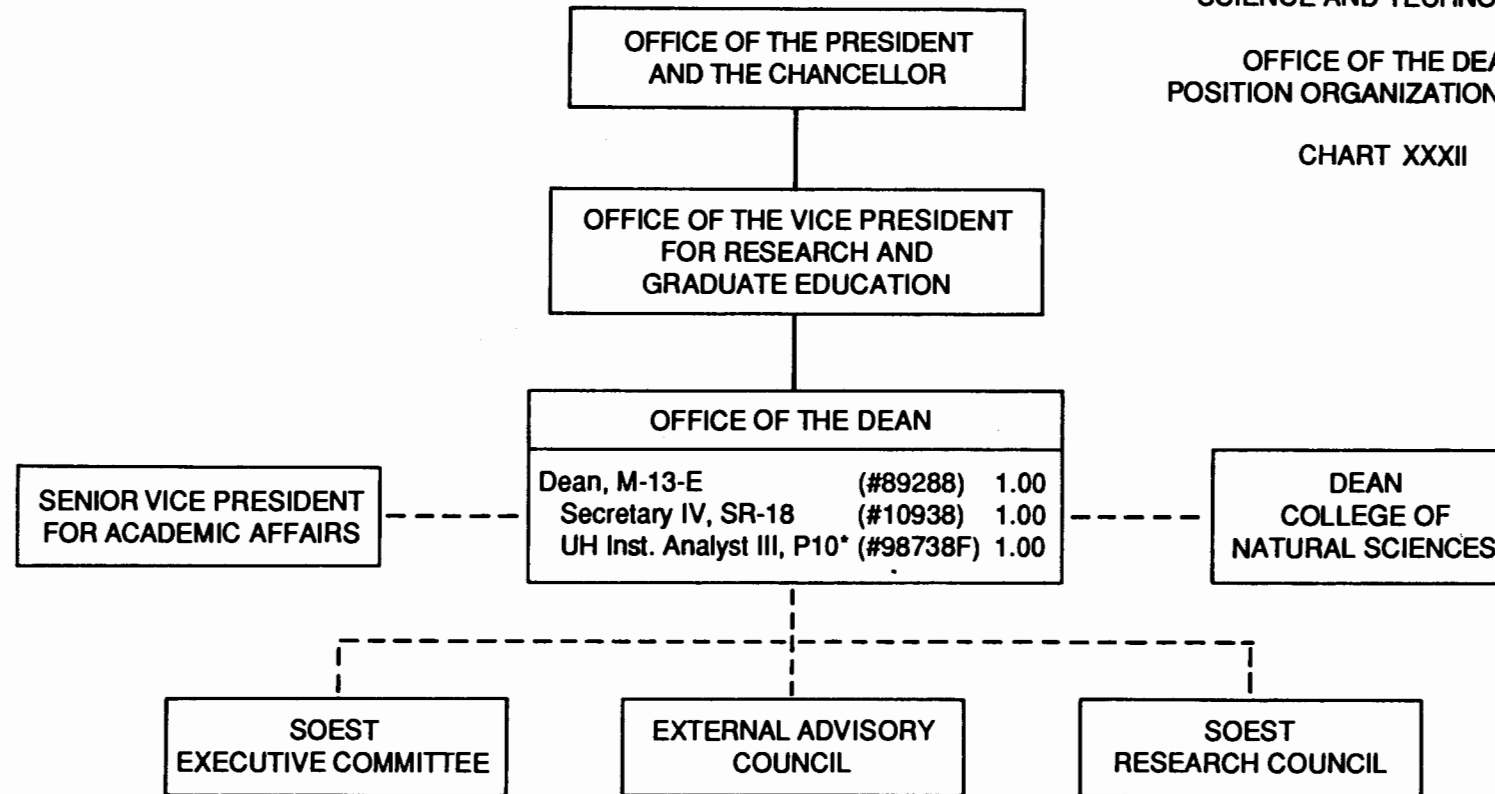
CHART UPDATED

DATE JUN 30 1991

STATE OF HAWAII
UNIVERSITY OF HAWAII
UNIVERSITY OF HAWAII AT MANOA
SCHOOL OF OCEAN AND EARTH
SCIENCE AND TECHNOLOGY

OFFICE OF THE DEAN
POSITION ORGANIZATION CHART

CHART XXXII



* To be established/reclassified to the position of Assistant to the Dean

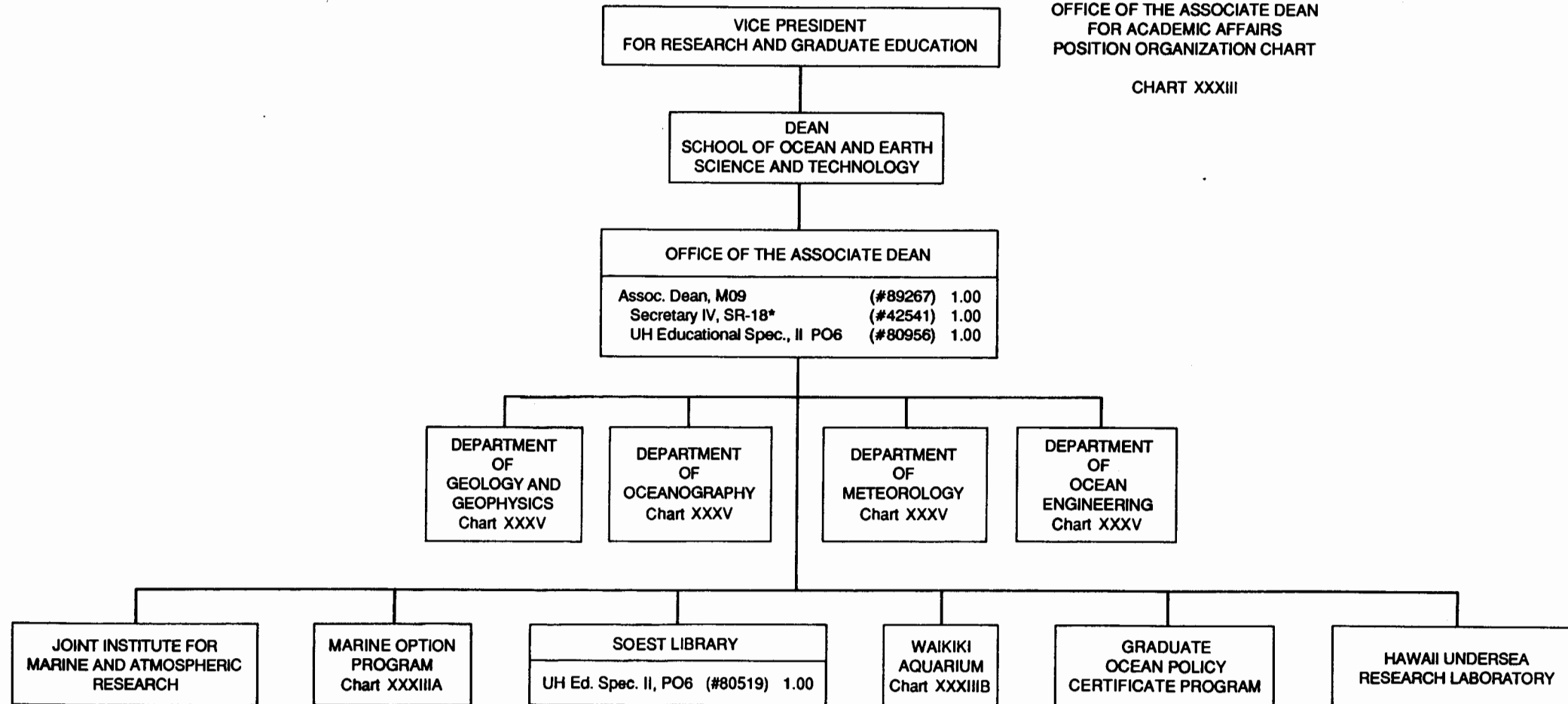
CHART UPDATED

DATE JUN 30 1991

STATE OF HAWAII
UNIVERSITY OF HAWAII
UNIVERSITY OF HAWAII AT MANOA
SCHOOL OF OCEAN AND EARTH
SCIENCE AND TECHNOLOGY

OFFICE OF THE ASSOCIATE DEAN
FOR ACADEMIC AFFAIRS
POSITION ORGANIZATION CHART

CHART XXXIII



* To be reclassified to Secretary III, SR-16

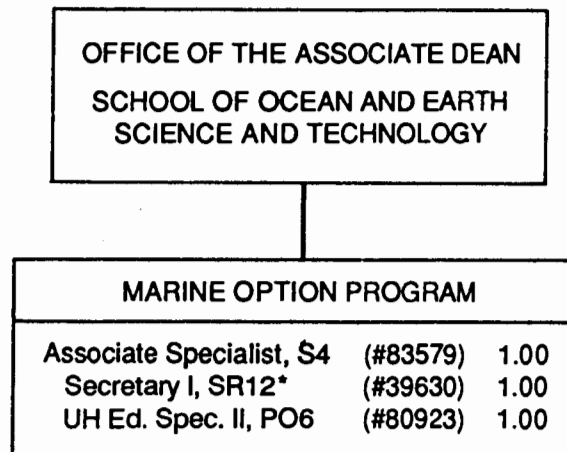
CHART UPDATED

DATE JUN 30 1991

STATE OF HAWAII
UNIVERSITY OF HAWAII
UNIVERSITY OF HAWAII AT MANOA
SCHOOL OF OCEAN AND EARTH
SCIENCE AND TECHNOLOGY

MARINE OPTION PROGRAM
POSITION ORGANIZATION CHART

CHART XXXIIIA



* To be reclassified

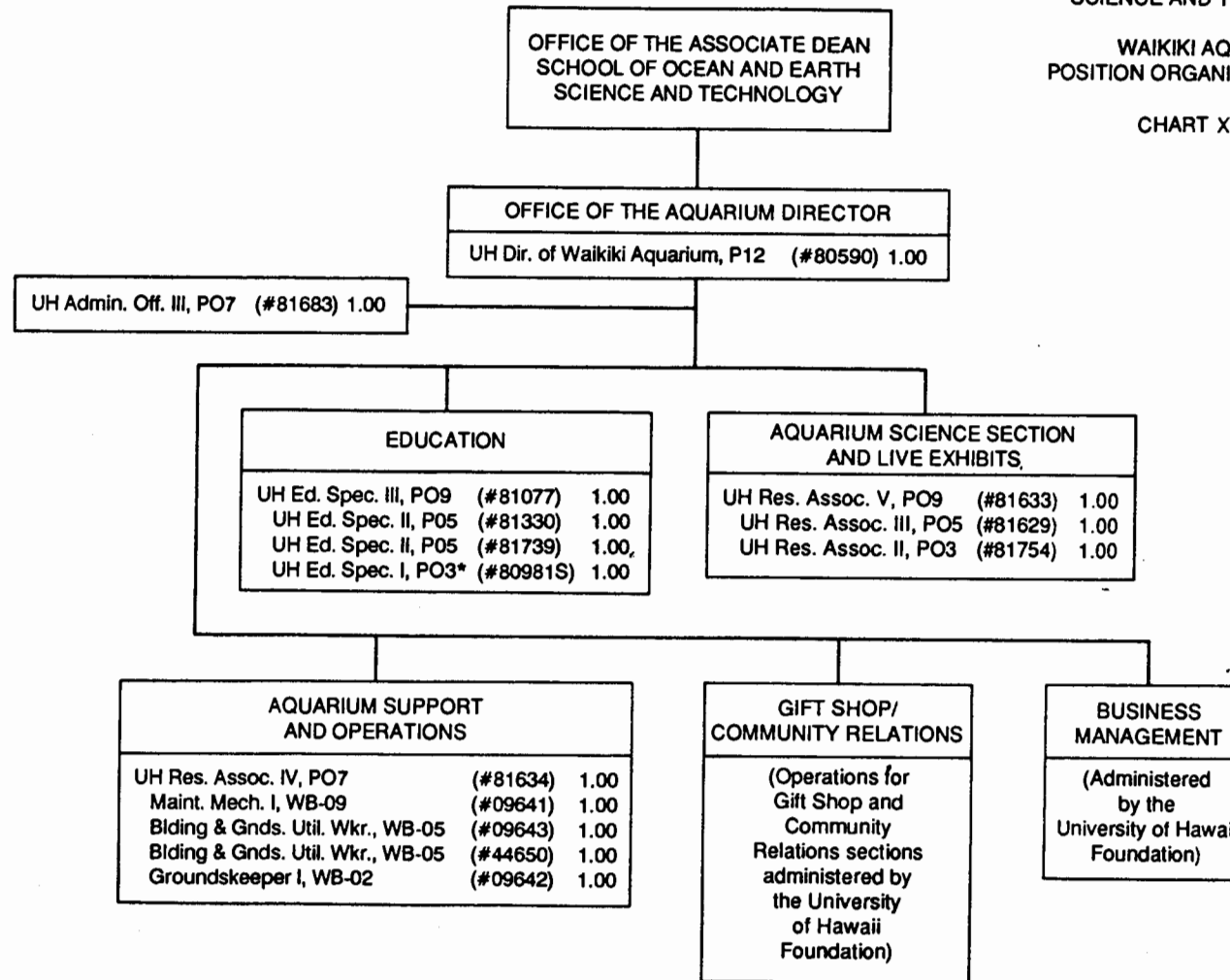
CHART UPDATED

DATE JUN 30 1991

STATE OF HAWAII
UNIVERSITY OF HAWAII
UNIVERSITY OF HAWAII AT MANOA
SCHOOL OF OCEAN AND EARTH
SCIENCE AND TECHNOLOGY

WAIKIKI AQUARIUM
POSITION ORGANIZATION CHART

CHART XXXIIIB



* Temporary

CHART UPDATED

DATE JUN 30 1991

STATE OF HAWAII
UNIVERSITY OF HAWAII
UNIVERSITY OF HAWAII AT MANOA
SCHOOL OF OCEAN AND EARTH
SCIENCE AND TECHNOLOGY

OFFICE OF THE DIRECTOR
OF ADMINISTRATION
POSITION ORGANIZATION CHART

CHART XXXIV

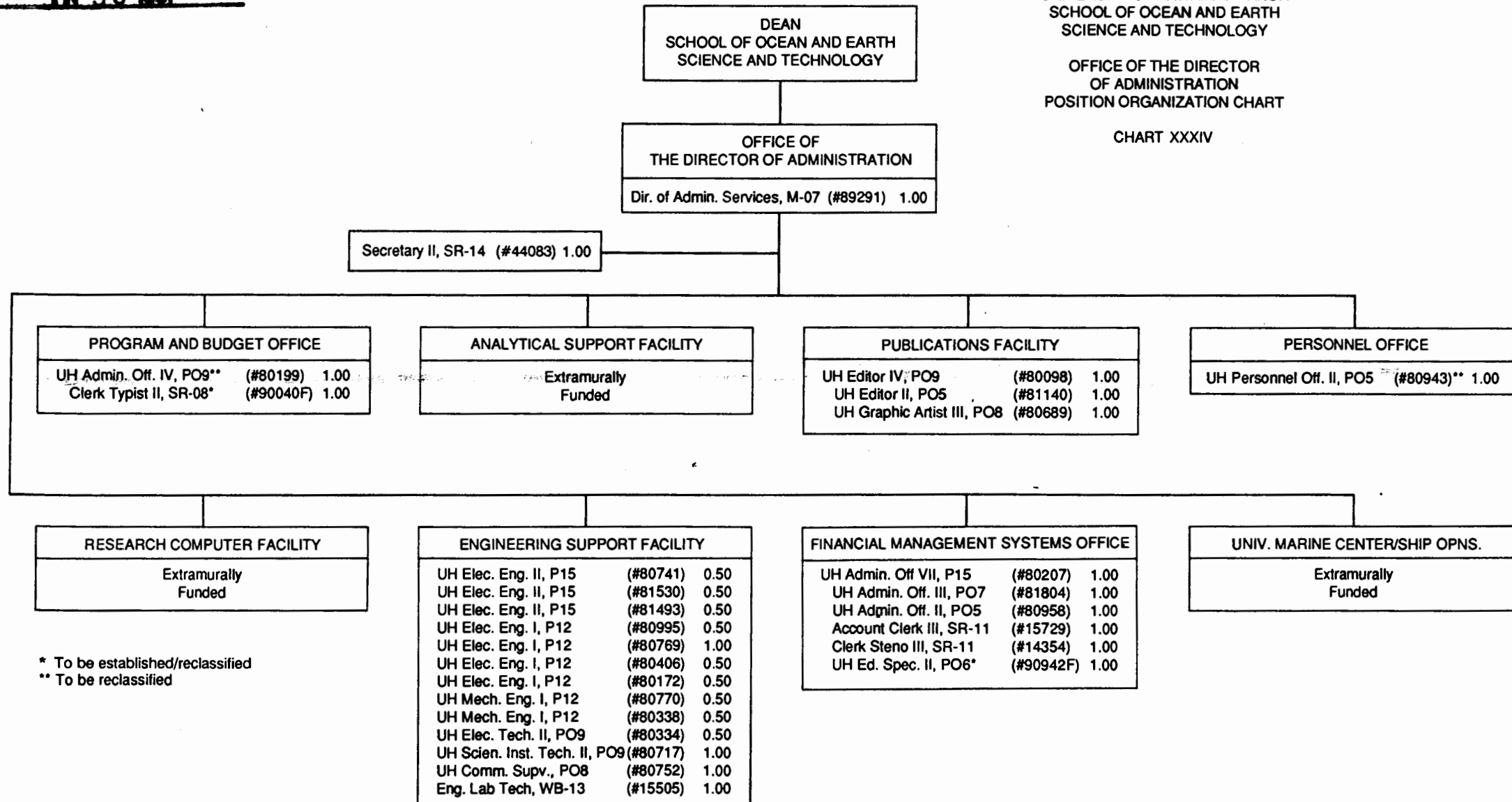


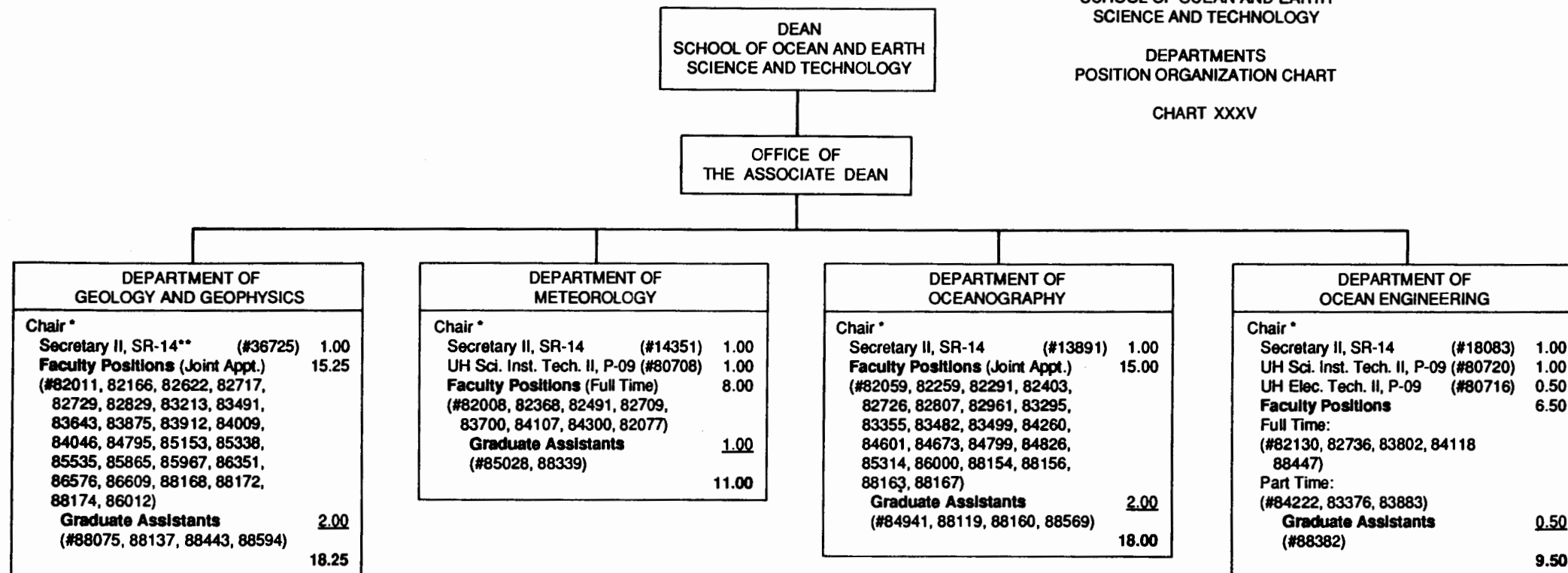
CHART UPDATED

DATE JUN 30 1991

STATE OF HAWAII
UNIVERSITY OF HAWAII
UNIVERSITY OF HAWAII AT MANOA
SCHOOL OF OCEAN AND EARTH
SCIENCE AND TECHNOLOGY

DEPARTMENTS
POSITION ORGANIZATION CHART

CHART XXXV



* Appointed from faculty positions

** To be redescribed (transferred from HIG)

CHART UPDATED

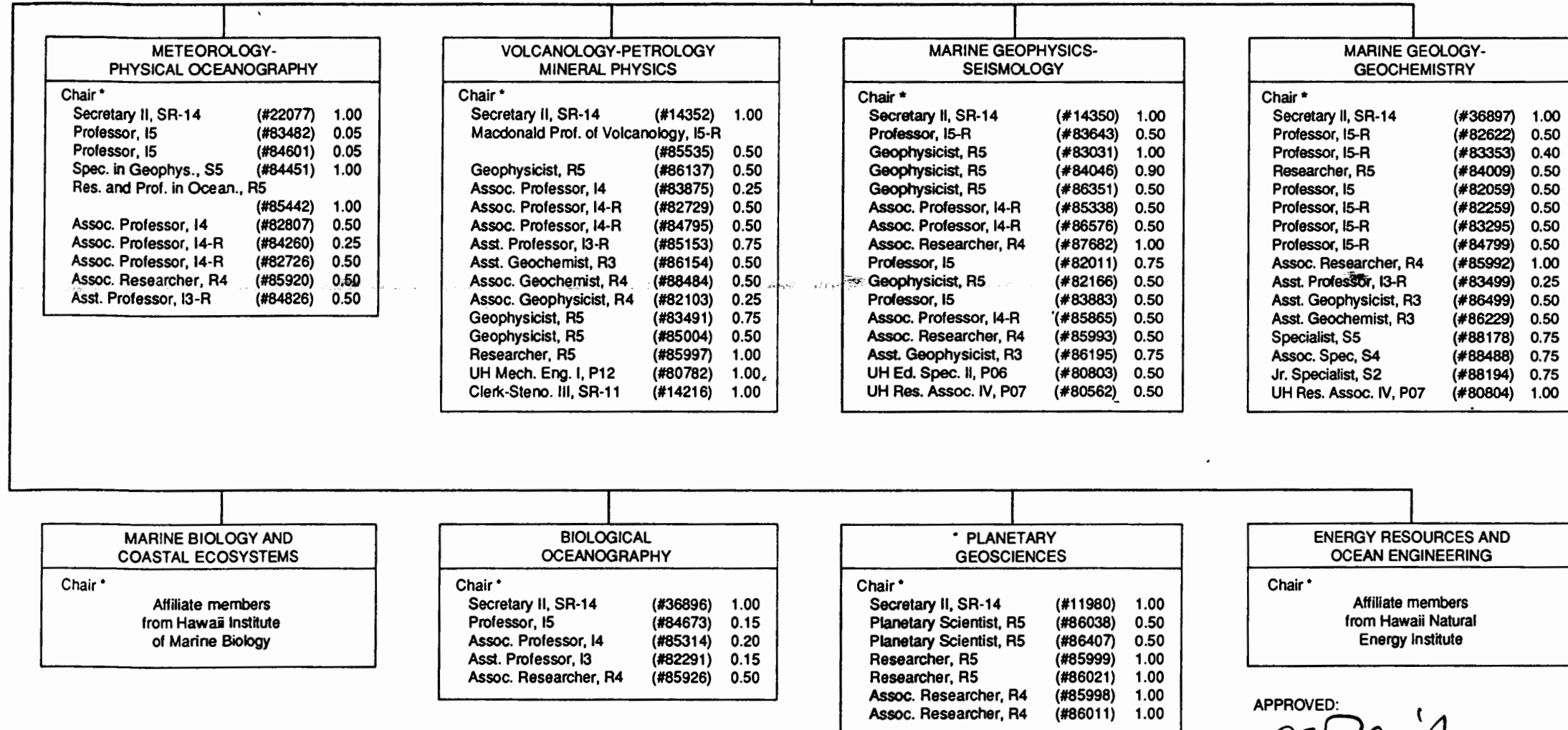
DATE IN 30 1991

STATE OF HAWAII
UNIVERSITY OF HAWAII
UNIVERSITY OF HAWAII AT MANOA
SCHOOL OF OCEAN AND EARTH
SCIENCE AND TECHNOLOGY

RESEARCH DIVISIONS
POSITION ORGANIZATION CHART

CHART XXXVI

DEAN
SCHOOL OF OCEAN AND EARTH
SCIENCE AND TECHNOLOGY



* Appointed from faculty positions

APPROVED:

C. Barry Raleigh
C. Barry Raleigh, Dean

School of Ocean & Earth Science & Technology

06/30/91

CHART UPDATED

DATE JUN 30 1991

STATE OF HAWAII
UNIVERSITY OF HAWAII
UNIVERSITY OF HAWAII AT MANOA
SCHOOL OF OCEAN AND EARTH
SCIENCE AND TECHNOLOGY

HAWAII INSTITUTE OF MARINE BIOLOGY
ORGANIZATION CHART

CHART XXXVII

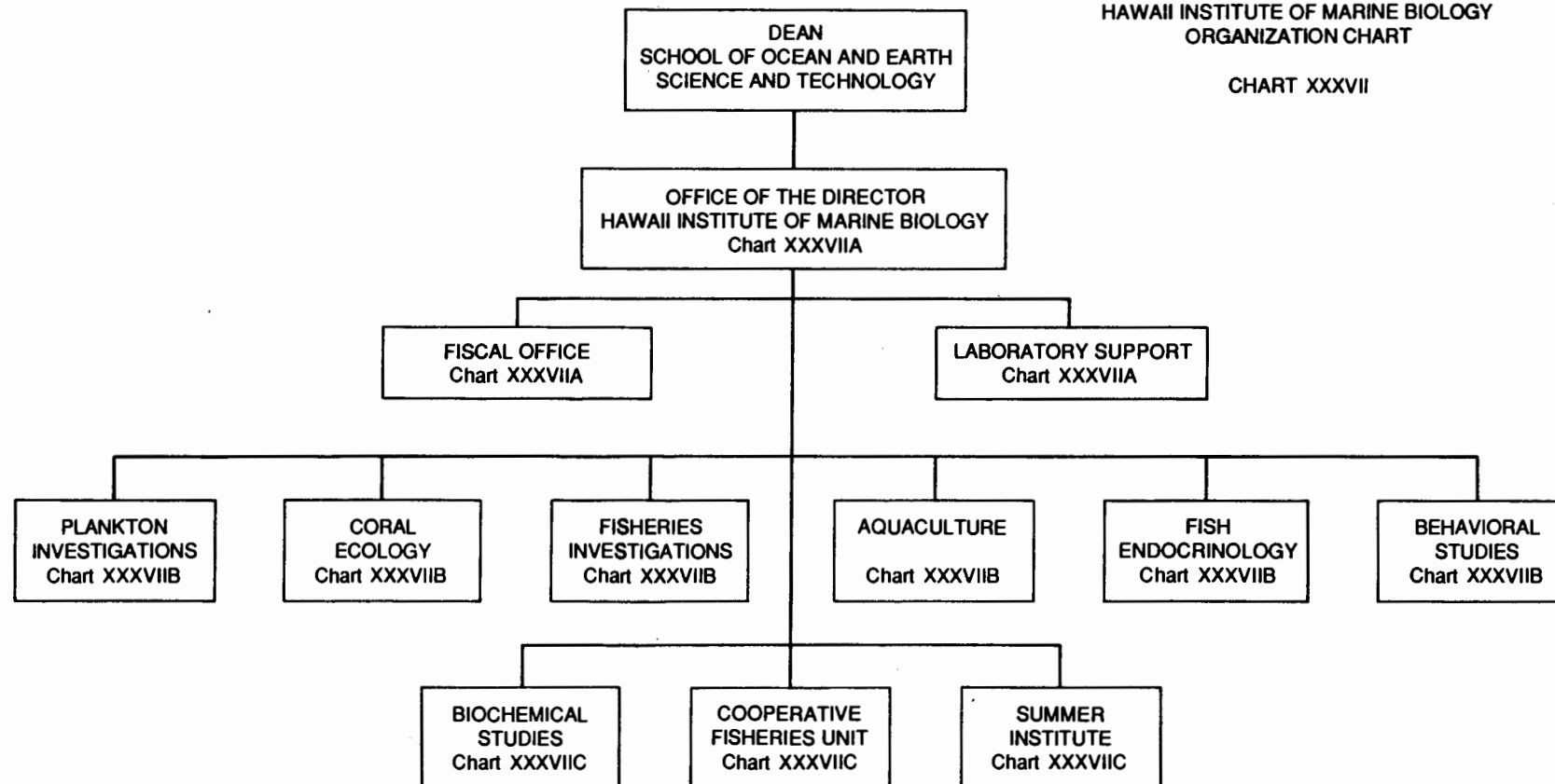


CHART UPDATED

DATE IN 30 1991

STATE OF HAWAII
UNIVERSITY OF HAWAII
UNIVERSITY OF HAWAII AT MANOA
SCHOOL OF OCEAN AND EARTH
SCIENCE AND TECHNOLOGY

HAWAII INSTITUTE OF MARINE BIOLOGY POSITION ORGANIZATION CHART

CHART XXXVIIA

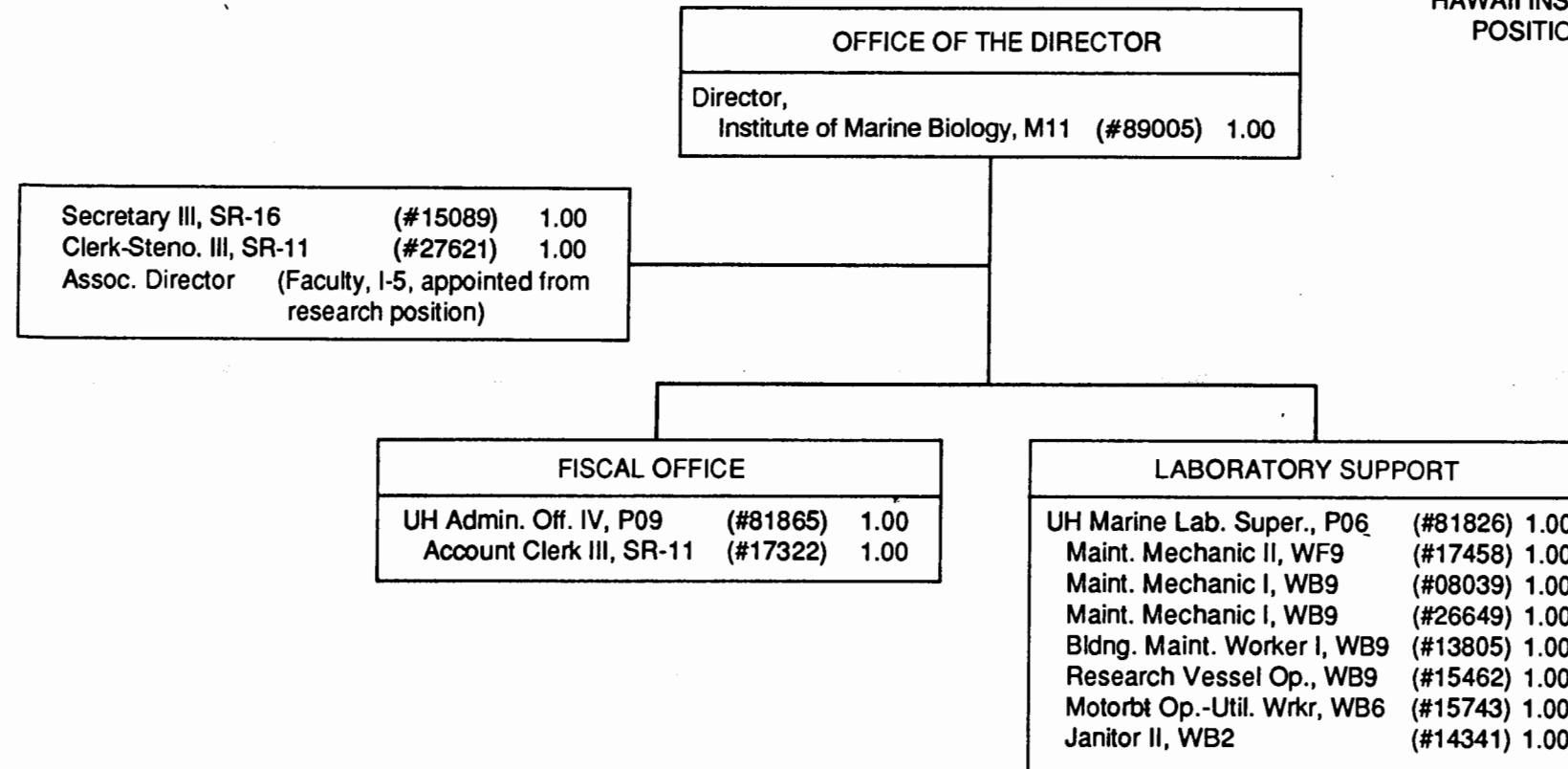


CHART UPDATED

DATE IN 30 1991

STATE OF HAWAII
UNIVERSITY OF HAWAII
UNIVERSITY OF HAWAII AT MANOA
SCHOOL OF OCEAN AND EARTH
SCIENCE AND TECHNOLOGY

HAWAII INSTITUTE OF MARINE BIOLOGY
POSITION ORGANIZATION CHART

CHART XXXVIII

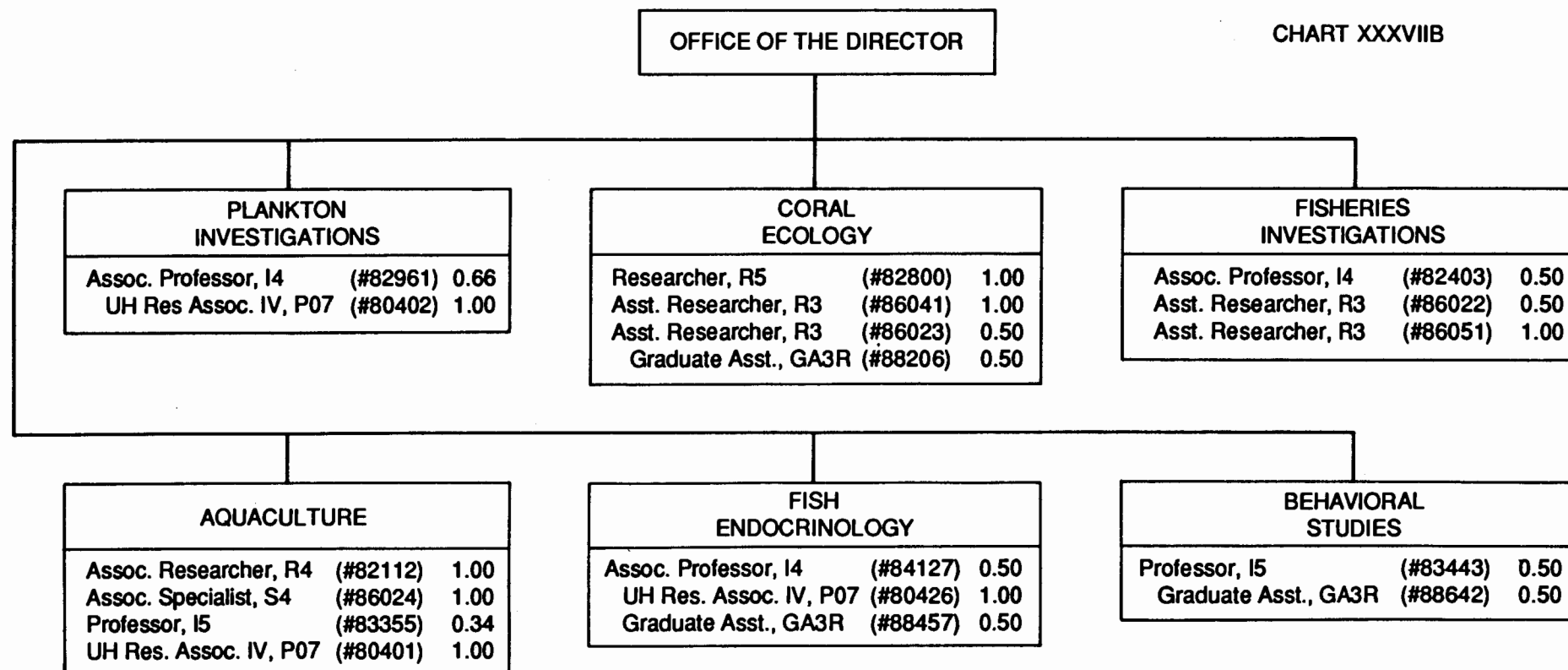


CHART UPDATED

DATE IN 30 1991

STATE OF HAWAII
UNIVERSITY OF HAWAII
UNIVERSITY OF HAWAII AT MANOA
SCHOOL OF OCEAN AND EARTH
SCIENCE AND TECHNOLOGY

HAWAII INSTITUTE OF MARINE BIOLOGY
POSITION ORGANIZATION CHART

CHART XXXVIIC

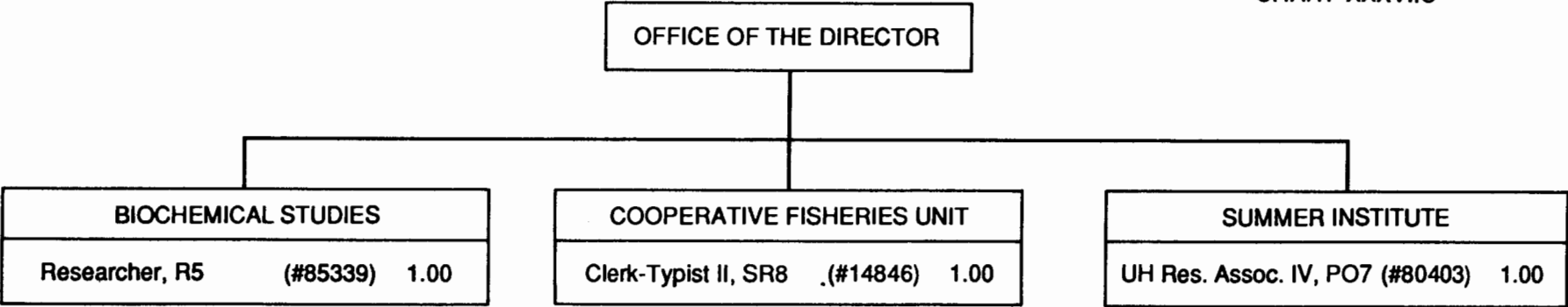


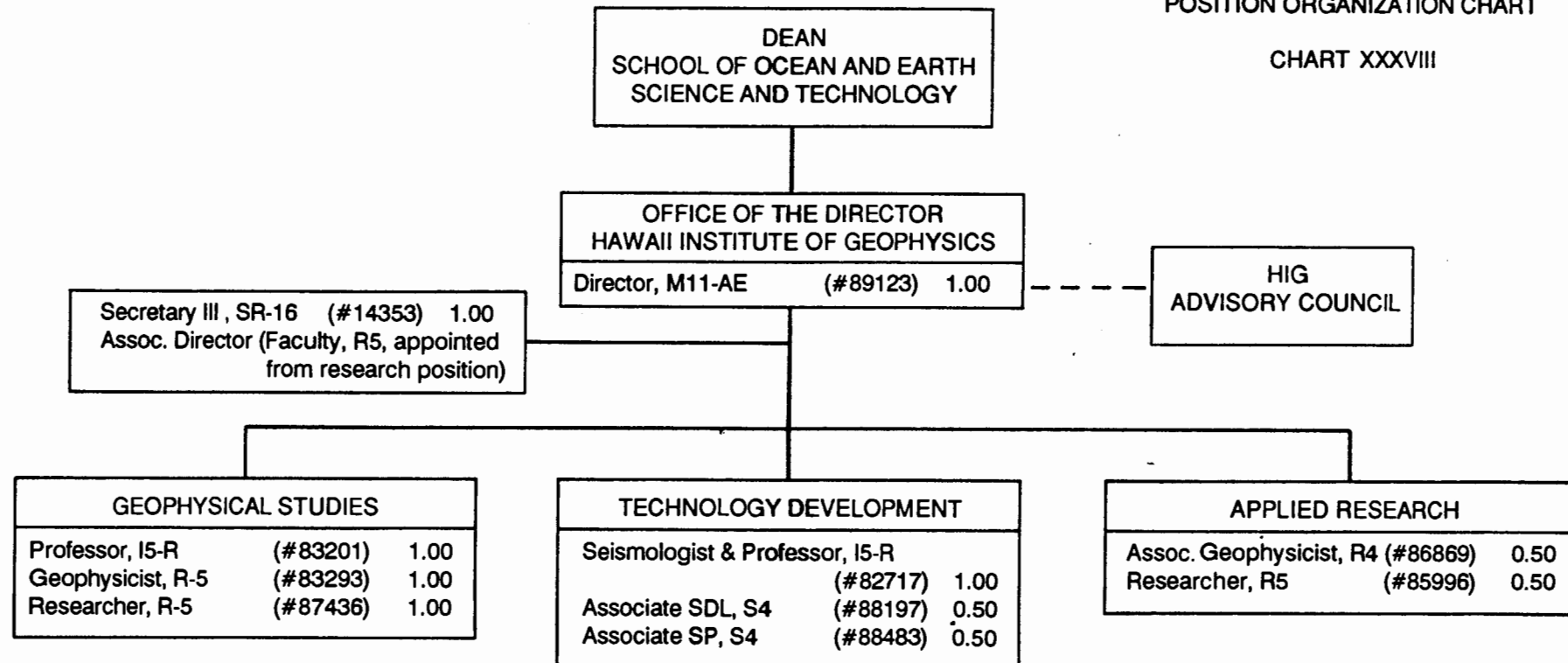
CHART UPDATED

DATE JN 30 1991

STATE OF HAWAII
UNIVERSITY OF HAWAII
UNIVERSITY OF HAWAII AT MANOA
SCHOOL OF OCEAN AND EARTH
SCIENCE AND TECHNOLOGY

HAWAII INSTITUTE OF GEOPHYSICS
POSITION ORGANIZATION CHART

CHART XXXVIII



APPROVED:


C. Barry Raleigh, Dean
School of Ocean & Earth Science & Technology

06/30/91

CHART UPDATED

DATE JUN 30 1991

STATE OF HAWAII
UNIVERSITY OF HAWAII
UNIVERSITY OF HAWAII AT MANOA
SCHOOL OF OCEAN AND EARTH
SCIENCE AND TECHNOLOGY

HAWAII NATURAL ENERGY INSTITUTE POSITION ORGANIZATION CHART

CHART XXXIX

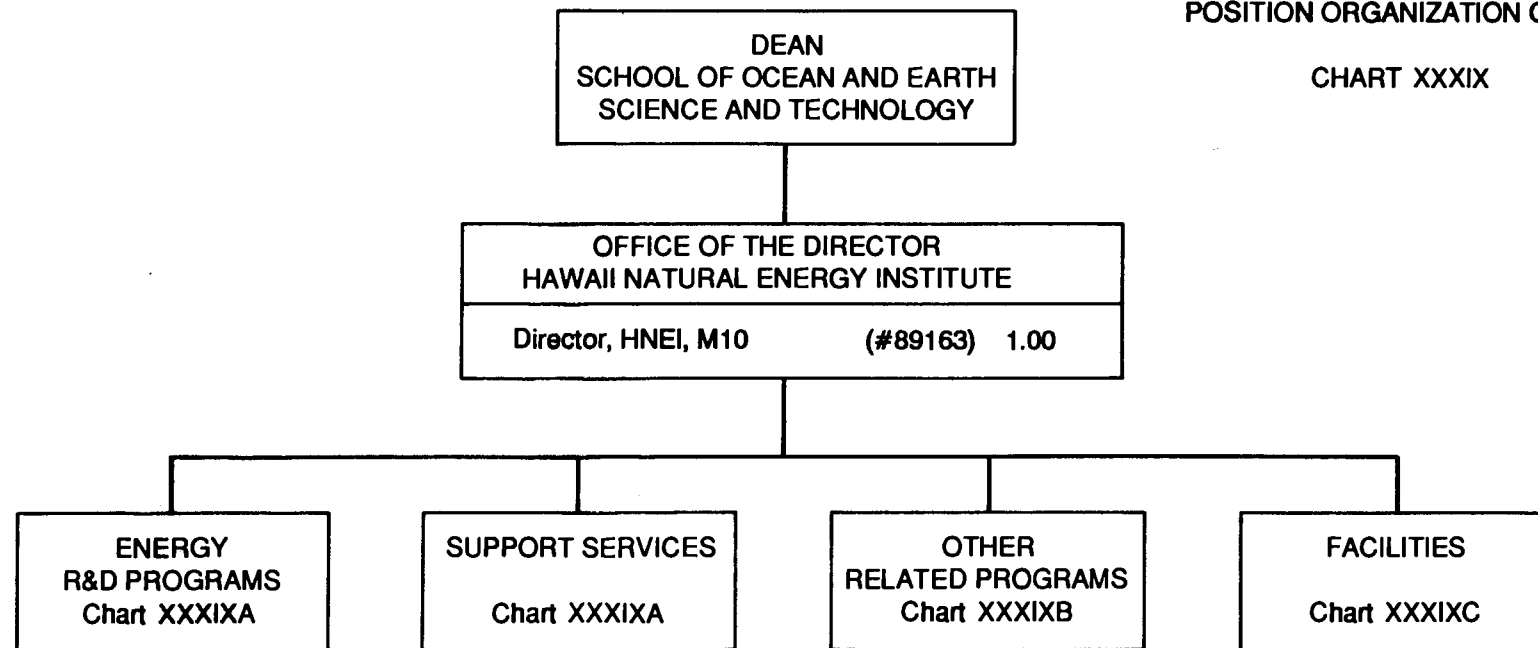


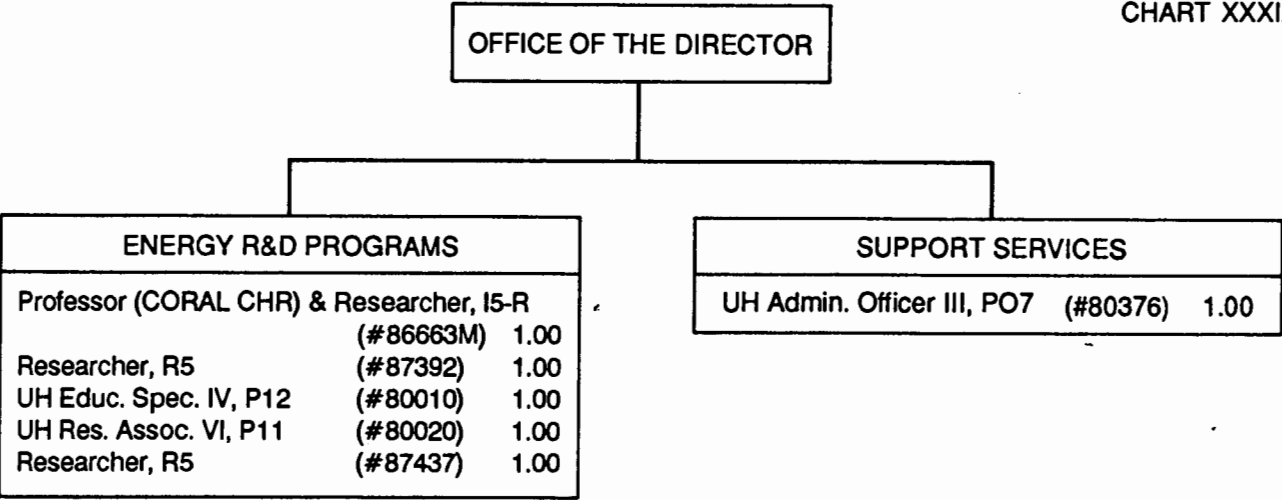
CHART UPDATED

DATE JUN 30 1991

STATE OF HAWAII
UNIVERSITY OF HAWAII
UNIVERSITY OF HAWAII AT MANOA
SCHOOL OF OCEAN AND EARTH
SCIENCE AND TECHNOLOGY

HAWAII NATURAL ENERGY INSTITUTE
POSITION ORGANIZATION CHART

CHART XXXIXA



APPROVED:

C. Barry Raleigh

06/30/91

C. Barry Raleigh, Dean
School of Ocean & Earth Science & Technology

CHART UPDATED

DATE JUN 30 1991

STATE OF HAWAII
UNIVERSITY OF HAWAII
UNIVERSITY OF HAWAII AT MANOA
SCHOOL OF OCEAN AND EARTH
SCIENCE AND TECHNOLOGY

HAWAII NATURAL ENERGY INSTITUTE

CHART XXXIXB

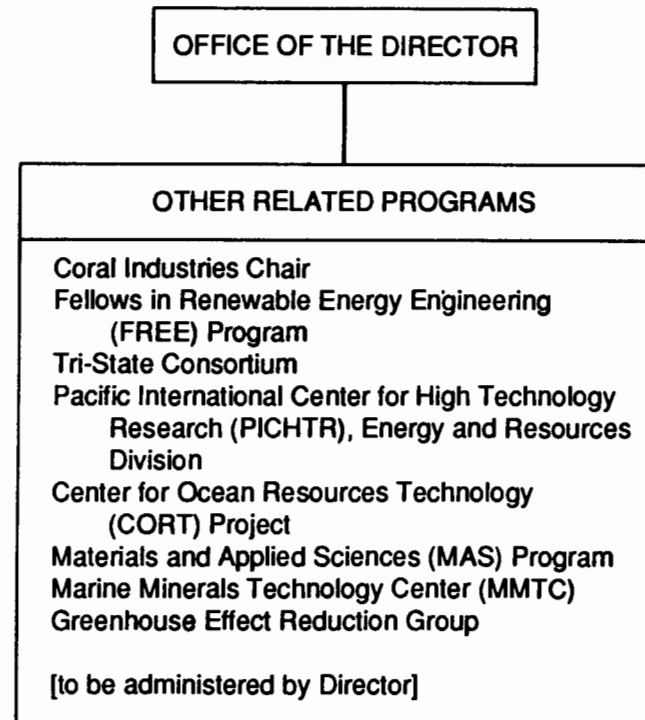


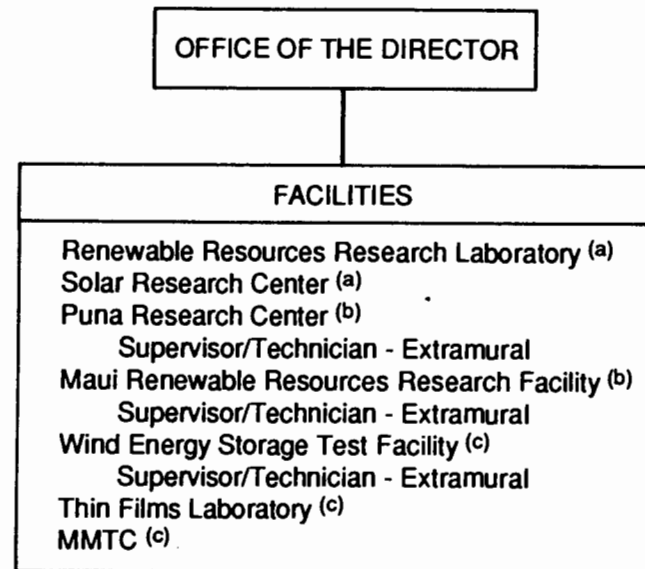
CHART UPDATED

DATE JUN 30 1991

STATE OF HAWAII
UNIVERSITY OF HAWAII
UNIVERSITY OF HAWAII AT MANOA
SCHOOL OF OCEAN AND EARTH
SCIENCE AND TECHNOLOGY

HAWAII NATURAL ENERGY INSTITUTE

CHART XXXIXC



- (a) administered by Coral Chair
- (b) research supervisory role
- (c) administration and research supervisory role

CHART UPDATED

DATE JUN 30 1991

STATE OF HAWAII
UNIVERSITY OF HAWAII
UNIVERSITY OF HAWAII AT MANOA
SCHOOL OF OCEAN AND EARTH
SCIENCE AND TECHNOLOGY

SEA GRANT COLLEGE PROGRAM ORGANIZATION CHART

CHART XL

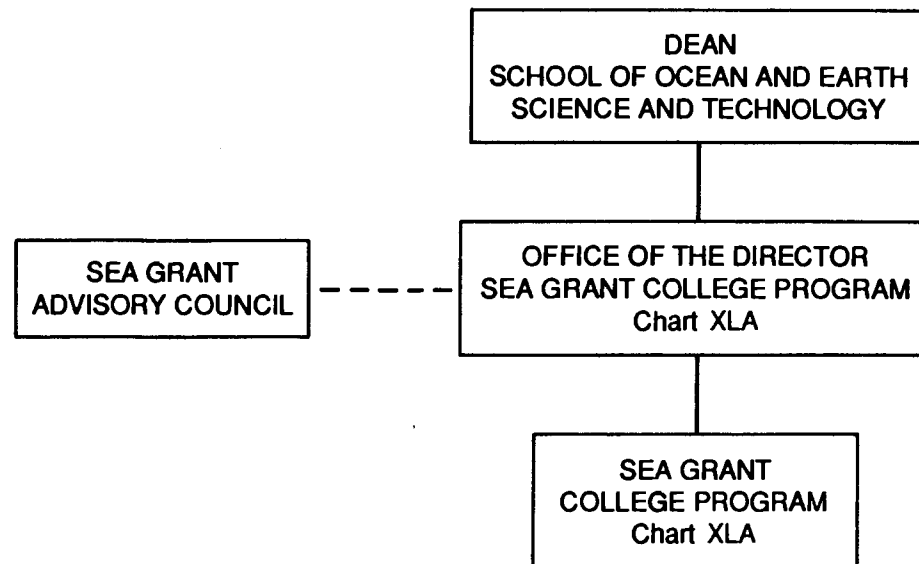


CHART UPDATED

DATE JUN 30 1991

STATE OF HAWAII
UNIVERSITY OF HAWAII
UNIVERSITY OF HAWAII AT MANOA
SCHOOL OF OCEAN AND EARTH
SCIENCE AND TECHNOLOGY

SEA GRANT COLLEGE PROGRAM
POSITION ORGANIZATION CHART

CHART XLA

