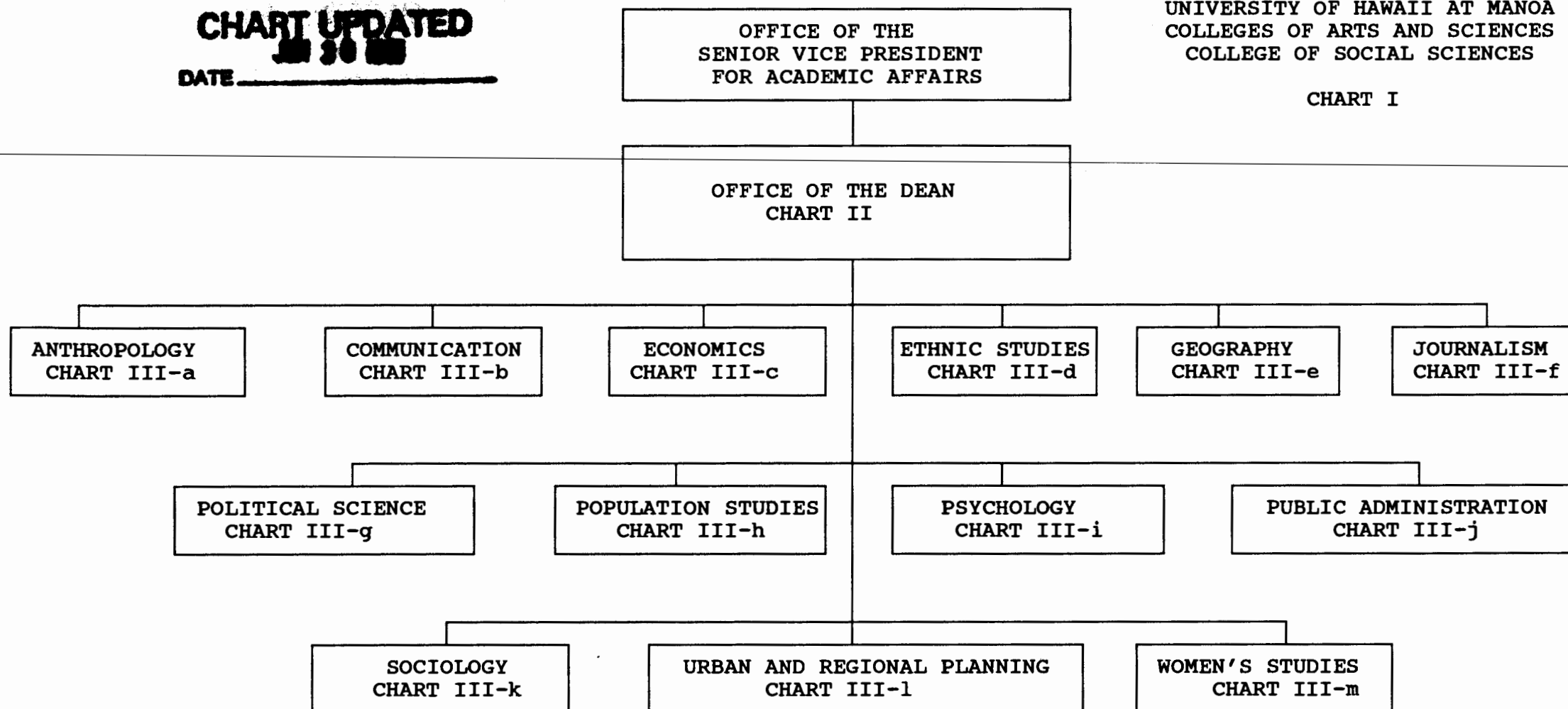


CHART UPDATED
DATE _____

STATE OF HAWAII
UNIVERSITY OF HAWAII
UNIVERSITY OF HAWAII AT MANOA
COLLEGES OF ARTS AND SCIENCES
COLLEGE OF SOCIAL SCIENCES

CHART I



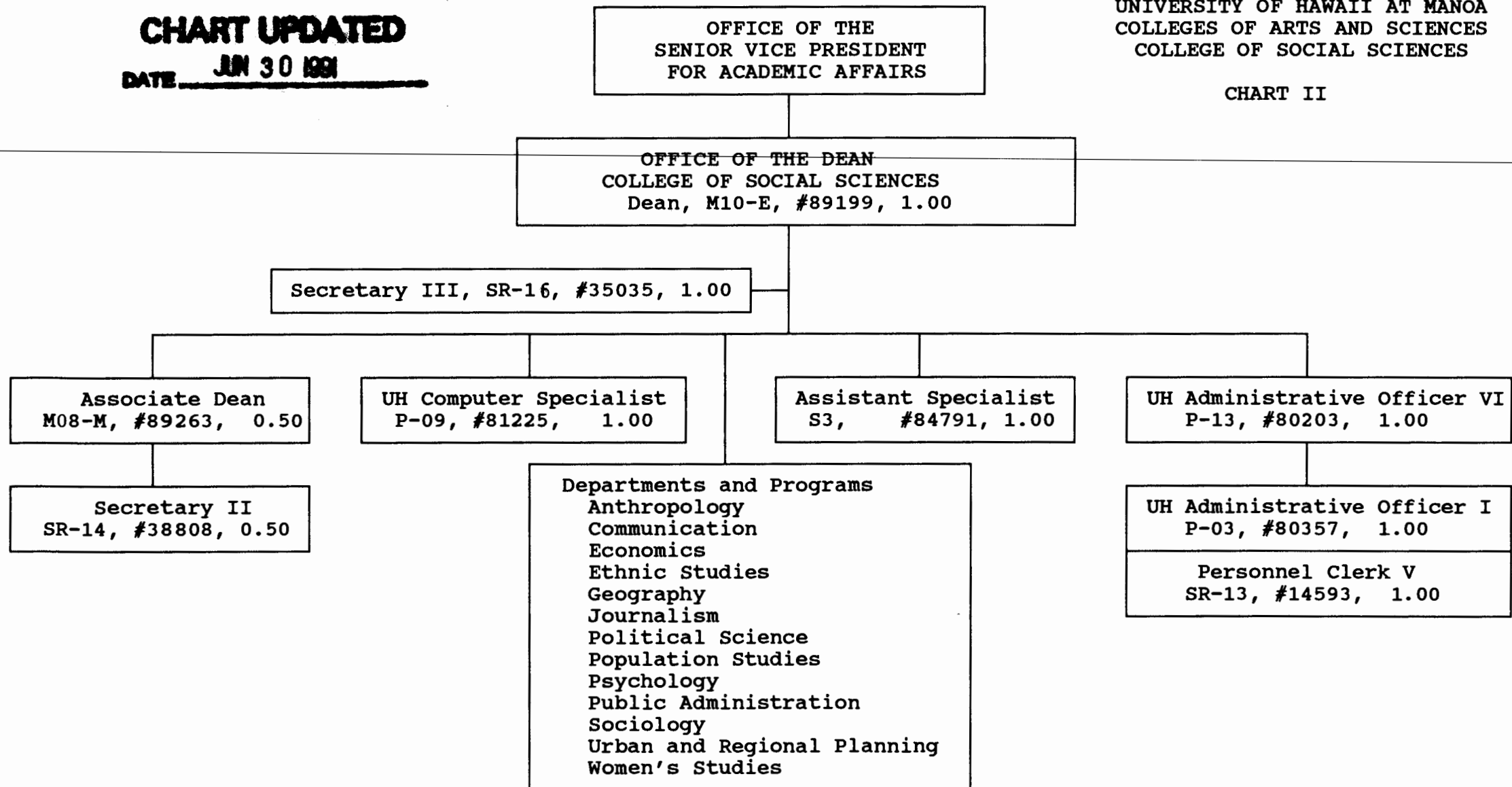
APPROVED:

R. A. Dubanoski
R. A. Dubanoski, Dean
College of Social Sciences
June 30, 1991

CHART UPDATED
DATE JUN 30 1991

STATE OF HAWAII
UNIVERSITY OF HAWAII
UNIVERSITY OF HAWAII AT MANOA
COLLEGES OF ARTS AND SCIENCES
COLLEGE OF SOCIAL SCIENCES

CHART II



APPROVED:

R. A. Dubanoski

R. A. Dubanoski, Dean
College of Social Sciences
June 30, 1991

CHART UPDATED
JUN 30 1991
DATE _____

OFFICE OF THE DEAN

STATE OF HAWAII
UNIVERSITY OF HAWAII
UNIVERSITY OF HAWAII AT MANOA
COLLEGES OF ARTS AND SCIENCES
COLLEGE OF SOCIAL SCIENCES

CHART III-a

DEPARTMENT OF ANTHROPOLOGY

Chair (appointed from faculty positions)

Secretary II, SR-14, #13482 1.00

UH Student Services Specialist II, P-06, #80639 1.00

UH Educational Specialist II, P-06, #81746 1.00

Faculty Positions: 15.25

Full time: #82188, 82195, 82207, 82534, 82638
82779, 82797, 83004, 83358, 83405
83574, 83924, 84206, 84399, 85082

Part time: #83498

Graduate Assistants: 3.00

#83831A, 83831B, 88064, 88367
88529, 88591

21.25

APPROVED:

R. A. Dubanoski
R. A. Dubanoski, Dean
College of Social Sciences
June 30, 1991

CHART UPDATED
DATE JUN 30 1991

OFFICE OF THE DEAN

STATE OF HAWAII
UNIVERSITY OF HAWAII
UNIVERSITY OF HAWAII AT MANOA
COLLEGES OF ARTS AND SCIENCES
COLLEGE OF SOCIAL SCIENCES

CHART III-b

DEPARTMENT OF COMMUNICATION

Chair (appointed from faculty positions)

Secretary II, SR-14, #14362 1.00

Clerk-Stenographer II, SR-09, #18114 0.50

Faculty Positions: 12.00

Full time: #82279, 82280, 82602, 82871, 82905
82982, 83302, 83756, 84217, 84505
88169, 88619

Graduate Assistants: 3.50

#85507, 88210, 88506, 88534, 88581
88607, 88681

17.00

APPROVED:



R. A. Dubanoski, Dean
College of Social Sciences
June 30, 1991

CHART UPDATED
DATE JUN 30 1991

OFFICE OF THE DEAN

STATE OF HAWAII
UNIVERSITY OF HAWAII
UNIVERSITY OF HAWAII AT MANOA
COLLEGES OF ARTS AND SCIENCES
COLLEGE OF SOCIAL SCIENCES

CHART III-c

DEPARTMENT OF ECONOMICS

Chair (appointed from faculty positions)

Secretary II, SR-14, #15351 1.00

Clerk-Stenographer III, SR-11, #14360 1.00

Faculty Positions: 18.00

Full time: #82286, 82679, 82777, 82838, 83023
83411, 83484, 83748, 83943, 83953
84047, 84054, 84200, 84643, 84815
85027

Part time: #82741, 83611, 83650, 84928

Graduate Assistants: 4.50

#88061, 88175, 88193, 88233, 88248
88262, 88420, 88517, 88631

24.50

APPROVED:

R. A. Dubanoski
R. A. Dubanoski, Dean
College of Social Sciences
June 30, 1991

CHART UPDATED
DATE JUN 30 1991

OFFICE OF THE DEAN

STATE OF HAWAII
UNIVERSITY OF HAWAII
UNIVERSITY OF HAWAII AT MANOA
COLLEGES OF ARTS AND SCIENCES
COLLEGE OF SOCIAL SCIENCES

CHART III-d

ETHNIC STUDIES PROGRAM

Director (appointed from faculty positions)

Secretary II, SR-14, #24006 1.00

Clerk Typist II, SR-08, #44565 1.00

Faculty Positions: 7.75

Full time: #83195, 85586, 84790, 84805, 84801, 84803, 84807

Part time: #83191, 83738

9.75

APPROVED:

R. A. Dubanoski
R. A. Dubanoski, Dean
College of Social Sciences
June 30, 1991

Note: One position appropriated but not established as of 6/30/90
UH Educational Specialist, P-06, pseudo #90573F, 1.00 FTE

CHART UPDATED
DATE JUN 30 1991

OFFICE OF THE DEAN

STATE OF HAWAII
UNIVERSITY OF HAWAII
UNIVERSITY OF HAWAII AT MANOA
COLLEGES OF ARTS AND SCIENCES
COLLEGE OF SOCIAL SCIENCES

CHART III-e

DEPARTMENT OF GEOGRAPHY

Chair (appointed from faculty positions)

Secretary II, SR-14, #14358 1.00

Clerk-Stenographer II, SR-09, #18580 1.00

UH Educational Specialist II, P-06, #80641 1.00

Faculty Positions: 14.25

Full time: #82208, 82332, 82681, 82708, 83935
84209M, 84254, 84518, 84565, 84841M

Part time: #82328, 83275, 82338, 82680
86071L, 83522M, 85298

Graduate Assistants: 6.00

#88065, 88103, 88110, 88140, 88189
88217, 88232, 88391, 88416, 88446,
88446M, 88620

23.25

APPROVED:

R. A. Dubanoski

R. A. Dubanoski, Dean
College of Social Sciences
June 30, 1991

CHART UPDATED
DATE JUN 30 1991

OFFICE OF THE DEAN

STATE OF HAWAII
UNIVERSITY OF HAWAII
UNIVERSITY OF HAWAII AT MANOA
COLLEGES OF ARTS AND SCIENCES
COLLEGE OF SOCIAL SCIENCES

CHART III-f

DEPARTMENT OF JOURNALISM

Chair (appointed from faculty positions)

Secretary II, SR-14, #13807 1.00

Clerk Typist II, SR-08, #44398 1.00

Faculty Positions: 7.00

Full time: #82500, 82611, 82946, 83458
84115, 84478, 84792

9.00

APPROVED:

R. A. Dubanoski
R. A. Dubanoski, Dean
College of Social Sciences
June 30, 1991

CHART UPDATED
JUN 30 1991
DATE _____

OFFICE OF THE DEAN

STATE OF HAWAII
UNIVERSITY OF HAWAII
UNIVERSITY OF HAWAII AT MANOA
COLLEGES OF ARTS AND SCIENCES
COLLEGE OF SOCIAL SCIENCES

CHART III-g

DEPARTMENT OF POLITICAL SCIENCE

Chair (appointed from faculty positions)

Secretary II, SR-14, #11112 1.00

Clerk-Stenographer II, SR-09, #14363 1.00

Clerk-Stenographer II, SR-09, #21775 1.00

Faculty Positions: 22.50

Full time: #82145, 82278, 82317, 82672, 82823
82913, 83085, 83162, 83194, 83197
83311, 83370, 83621, 83753, 83858
84023, 84042, 84109, 84130, 84234
84556, 84800

Part time: #83277, 83778, 84059

Graduate Assistants: 4.00

#88076, 88090, 88238, 88336, 88407
88549, 88676, 88676A

29.50

APPROVED:

R. A. Dubanoski
R. A. Dubanoski, Dean
College of Social Sciences
June 30, 1991

CHART UPDATED

DATE JUN 30 1991

OFFICE OF THE DEAN

STATE OF HAWAII
UNIVERSITY OF HAWAII
UNIVERSITY OF HAWAII AT MANOA
COLLEGES OF ARTS AND SCIENCES
COLLEGE OF SOCIAL SCIENCES

CHART III-h

POPULATION STUDIES PROGRAM

Director (appointed from faculty positions)

0.00

APPROVED:

R. A. Dubanoski
R. A. Dubanoski, Dean
College of Social Sciences
June 30, 1991

CHART UPDATED

DATE JUN 30 1991

OFFICE OF THE DEAN

STATE OF HAWAII
UNIVERSITY OF HAWAII
UNIVERSITY OF HAWAII AT MANOA
COLLEGES OF ARTS AND SCIENCES
COLLEGE OF SOCIAL SCIENCES

CHART III-i

DEPARTMENT OF PSYCHOLOGY

Chair (appointed from faculty positions)
Director, Clinical Studies (appointed from faculty positions)

Secretary II, SR-14, #12856	1.00
Clerk-Stenographer III, SR-11, #19052	1.00
Clerk-Stenographer II, SR-09, #21971	1.00
UH Student Services Specialist III, P-09, #80638	1.00

Faculty Positions:	25.50
--------------------	-------

Full time: #82198, 82294, 82398, 82412, 82471, 82537, 82564
82615, 82916, 83092, 83110, 83507, 83626, 84131
84225, 84346, 84416, 84491, 84497, 84827, 84866
85075, 88005

Part time: #82192, 83799, 84319, 84861M, 84810

Graduate Assistants:	4.00
#85148, 88046, 88060, 88252, 88320, 88362, 88511	
88559	-----

33.50

APPROVED:

R. A. Dubanoski

R. A. Dubanoski, Dean
College of Social Sciences
June 30, 1991

CHART UPDATED
JUN 30 1991
DATE _____

OFFICE OF THE DEAN

STATE OF HAWAII
UNIVERSITY OF HAWAII
UNIVERSITY OF HAWAII AT MANOA
COLLEGES OF ARTS AND SCIENCES
COLLEGE OF SOCIAL SCIENCES

CHART III-j

PUBLIC ADMINISTRATION PROGRAM

Director (appointed from faculty positions)

Faculty Positions:

2.00

Full time: #84788, 84789

2.00

APPROVED:

R. A. Dubanoski
R. A. Dubanoski, Dean
College of Social Sciences
June 30, 1991

CHART UPDATED
JUN 30 1991
DATE _____

OFFICE OF THE DEAN

STATE OF HAWAII
UNIVERSITY OF HAWAII
UNIVERSITY OF HAWAII AT MANOA
COLLEGES OF ARTS AND SCIENCES
COLLEGE OF SOCIAL SCIENCES

CHART III-k

DEPARTMENT OF SOCIOLOGY

Chair (appointed from faculty positions)

Secretary II, SR-14, #13485 1.00

Clerk-Stenographer II, SR-09, #16953 1.00

UH Student Services Specialist II, P-06, #80640 1.00

Faculty Positions: 19.00

Full time: #82097, 82114, 82125, 82204, 82323, 82605
83050, 83164, 83867, 84076, 84121, 84237M
84286, 84456M, 84502M, 84504, 84575, 84616
84642

Graduate Assistants: 5.50

#88008, 88100, 88182, 88208, 88268, 88408
88485, 88498, 88533, 88616, 88392

27.50

APPROVED:

R. A. Dubanoski
R. A. Dubanoski, Dean
College of Social Sciences
June 30, 1991

CHART UPDATED

DATE JUN 30 1991

OFFICE OF THE DEAN

STATE OF HAWAII
UNIVERSITY OF HAWAII
UNIVERSITY OF HAWAII AT MANOA
COLLEGES OF ARTS AND SCIENCES
COLLEGE OF SOCIAL SCIENCES

CHART III-1

DEPARTMENT OF URBAN AND REGIONAL PLANNING

Chair (appointed from faculty positions)

Secretary II, SR-14, #15640

1.00

Faculty Positions:

6.00

Full time: #82539, 83624, 84060, 84522, 85736, 82377

7.00

APPROVED:



R. A. Dubanoski, Dean
College of Social Sciences
June 30, 1991

CHART UPDATED

DATE **JUN 30 1991**

OFFICE OF THE DEAN

STATE OF HAWAII
UNIVERSITY OF HAWAII
UNIVERSITY OF HAWAII AT MANOA
COLLEGES OF ARTS AND SCIENCES
COLLEGE OF SOCIAL SCIENCES

CHART III-m

WOMEN'S STUDIES PROGRAM

Director (appointed from faculty positions)

Secretary II, SR-14, #31323

1.00

Faculty Positions:


4.25

Full time: #82870

Part time: #82318, 82770M, 84034M, 84057M
85962, 86070, 86071M

5.25

APPROVED:


R. A. Dubanoski, Dean
College of Social Sciences
June 30, 1991