

ORGANIZATION CHART
Chart I

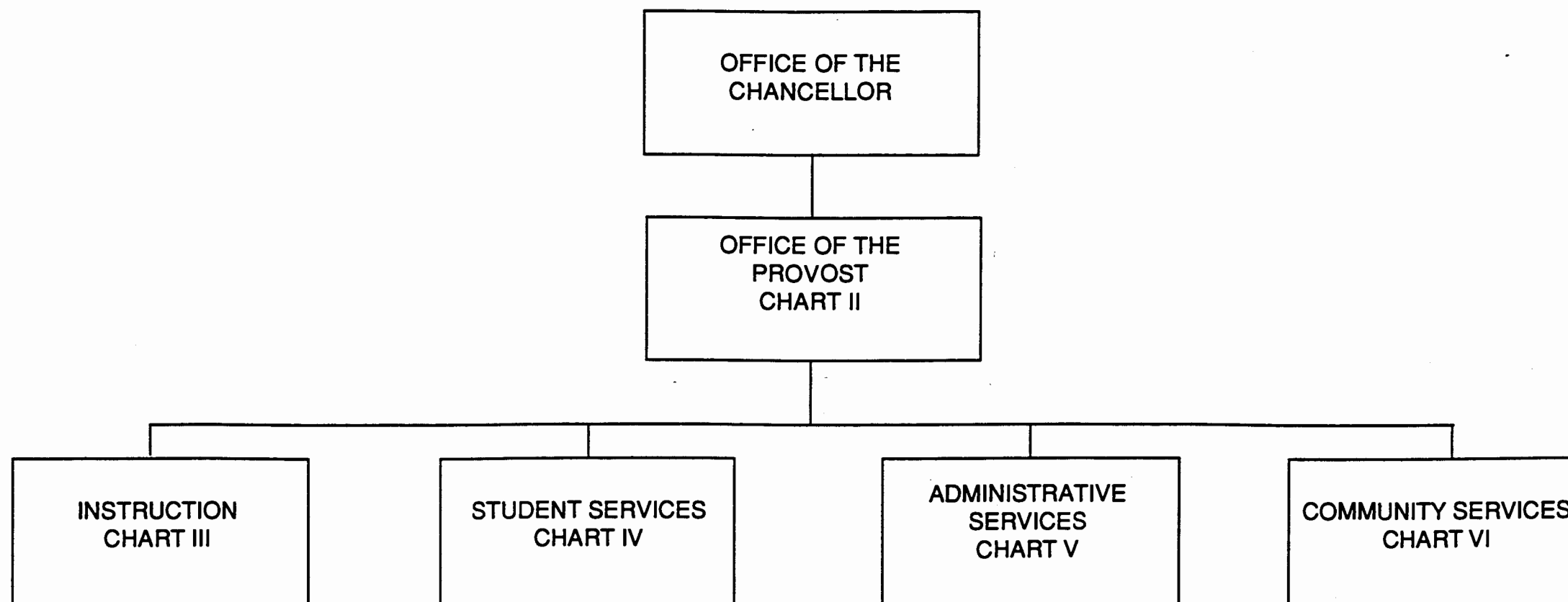


CHART UPDATED
DATE 12.22.92

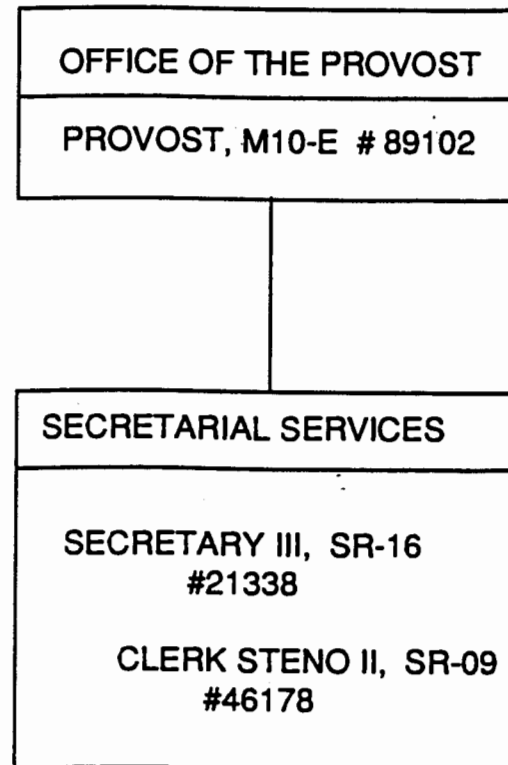


CHART UPDATED
DATE JUN 30 1992

GENERAL FUNDS 3.00

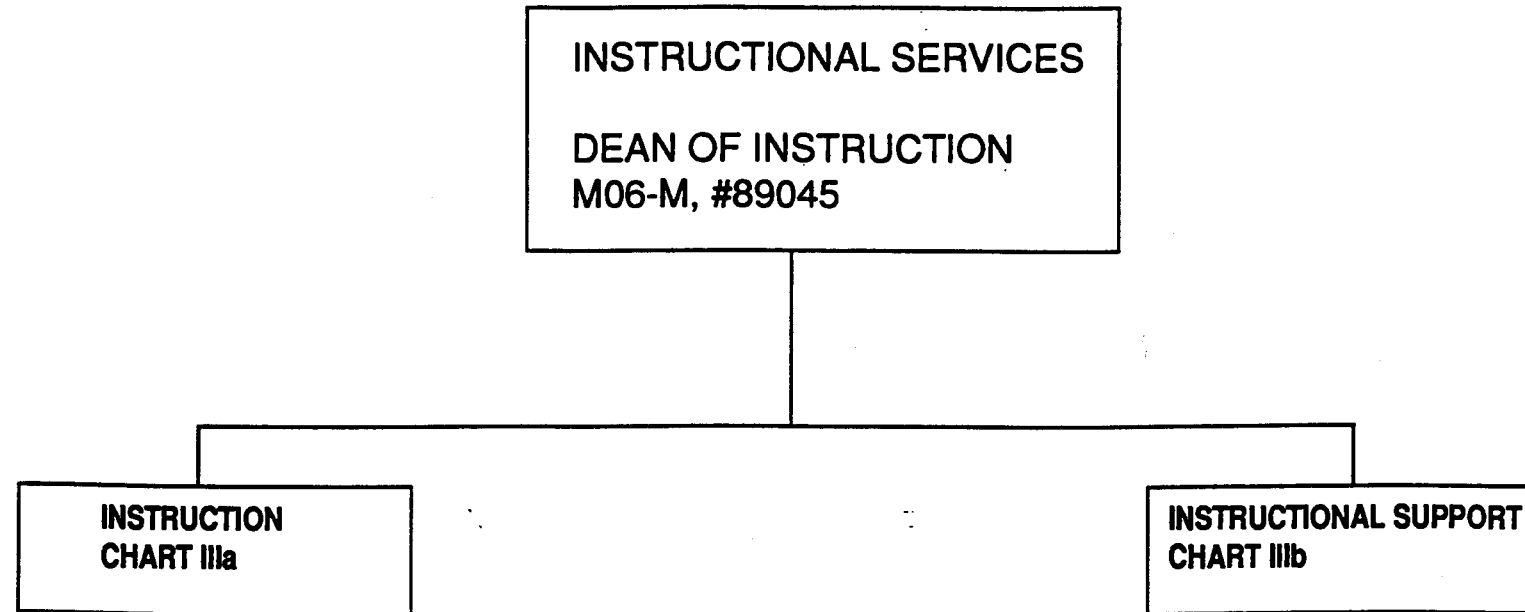


CHART UPDATED
DATE JUL 30 1992

CHART UPDATED

DATE JUN 30 1992

INSTRUCTION

DEAN, M06-M

STENO POOL

CLERK-STENO II, SR-9

#26901, 26902, 24785, 42211

SECRETARIAL SERVICES

SECRETARY II, SR-14

#24393

LANGUAGE ARTS AND HUMANITIES DIVISION

CHAIRPERSON, # ____*

FACULTY

ASIAN/PAC. LANG 87094
ART

FULL-TIME: 83324,
83640

ENGLISH

FULL-TIME: 85047
82265, 83727,
84176, 84277

HISTORY

FULL-TIME: 82274

PHILOSOPHY

FULL-TIME: 82149

SPEECH

FULL-TIME: 82262

MUSIC

FULL-TIME: 86618

HAWAIIAN STUDIES

FULL-TIME: 86811

THINKING & WRITING

FULL-TIME: 87015

MATHEMATICS/SCIENCE/ SOCIAL SCIENCE DIVISION

CHAIRPERSON, # ____*

FACULTY

MATH

FULL-TIME: 84652,
84443

CHEMISTRY

FULL-TIME: 83179

BIOLOGICAL SCIENCE

FULL-TIME: 82934

PHYSICAL SCIENCE

FULL-TIME: 83645

PSYCHOLOGY

FULL-TIME: 83567

ANTHROPOLOGY

FULL-TIME: 83208

SOCIOLOGY

FULL-TIME: 82416

POLITICAL SCIENCE

FULL-TIME: 85046

COMPUTER SCIENCE

FULL-TIME: 85048

EARLY CHILDHOOD

FULL-TIME: 86810

TRADE AND TECHNOLOGY DIVISION

CHAIRPERSON, # ____*

FACULTY

AUTO TECHNOLOGY

FULL-TIME: 84392,
84612

AUTO BODY REPAIR

FULL-TIME: 84153

CARPENTRY

FULL-TIME: 83132

ELECTRICITY

FULL-TIME: 84605

MACHINE SHOP

FULL-TIME: 85045

ELECTRONICS

FULL-TIME: 83175

86617

FACILITIES ENG.

FULL-TIME: 84657
92900F

HEALTH EDUCATION DIVISION

CHAIRPERSON, # ____*

FACULTY

NURSING

FULL-TIME: 83856
82579, 83216,
84687, 84015
86763, 86765, 86779
86786, 86889

HEALTH/P.E.

FULL-TIME: 86118

BUSINESS EDUCATION DIVISION

CHAIRPERSON, # ____*

FACULTY

ACCOUNTING

FULL-TIME: 84611,
82261

BUSINESS

FULL-TIME: 83732,
82376

SALES & MANAGEMENT

FULL-TIME: 82808,
85044

SECRETARIAL & RELATED

FULL-TIME: 82968,
83874

FOOD SERVICES

FULL-TIME: 86579,
87014

ED & AC SUP SP I

FULL-TIME: 81918
80241S (W)

VISITOR INDUS PROG

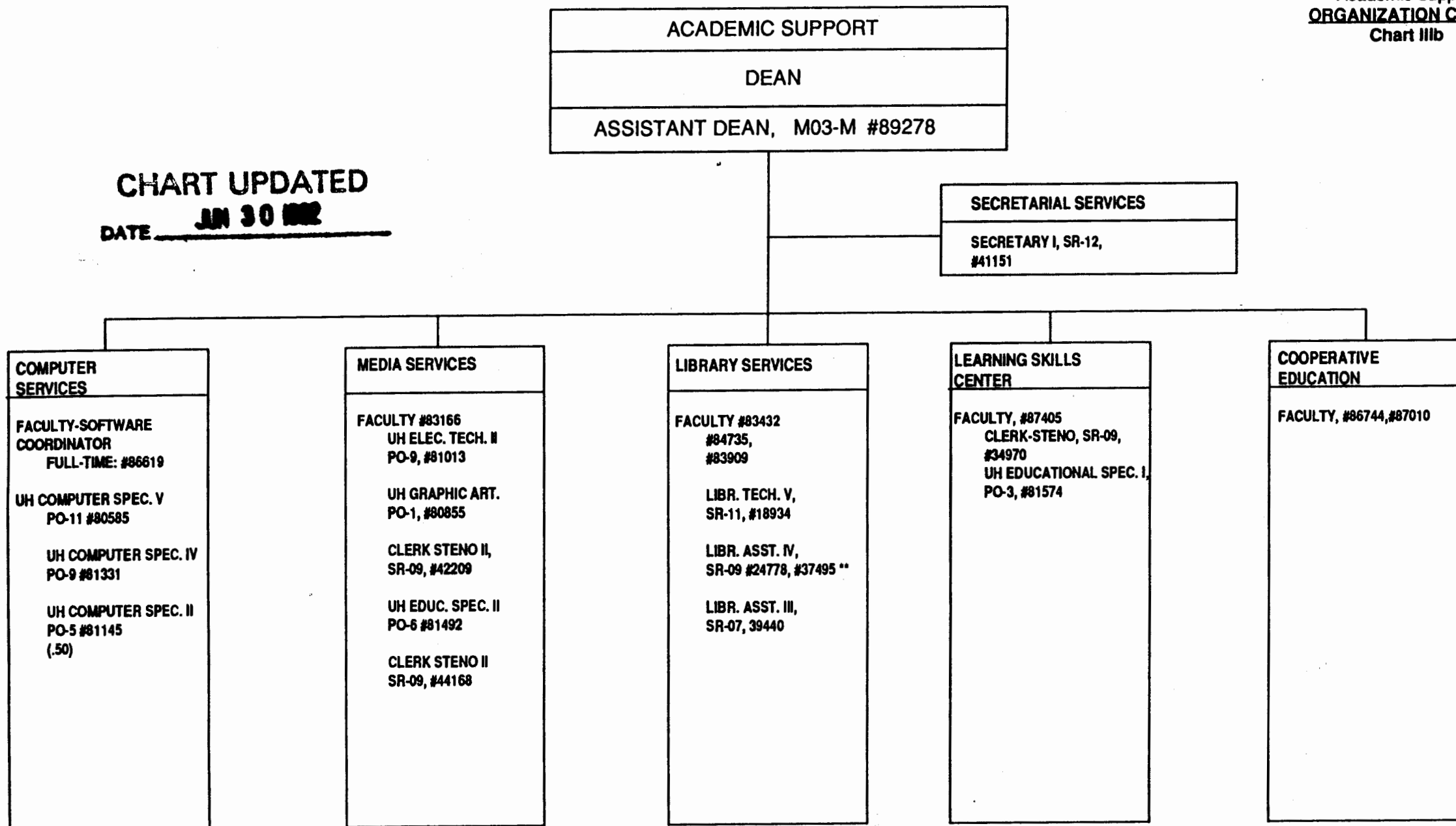
FULL-TIME: 86901,
85043

GENERAL FUNDS 64.00

* Appointed from Instructional positions within divisions on a rotating basis.

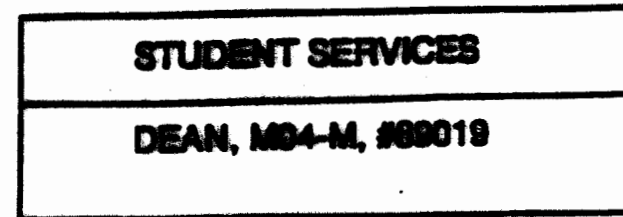
** Temporary positions

CHART UPDATED
 DATE **JUN 30 1992**



**Temporary Positions

GENERAL FUNDS 22.50

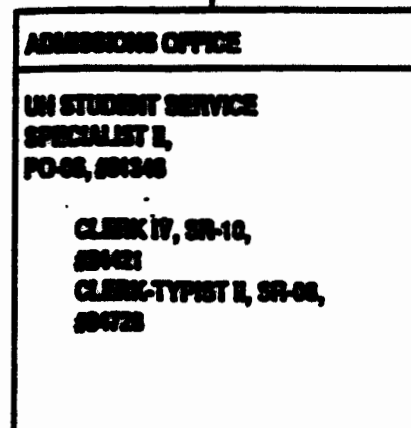
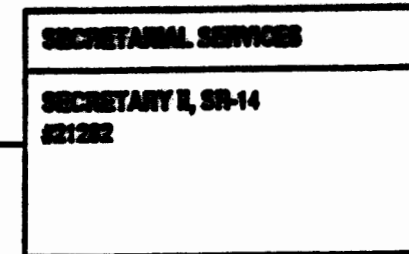


APPROVED:

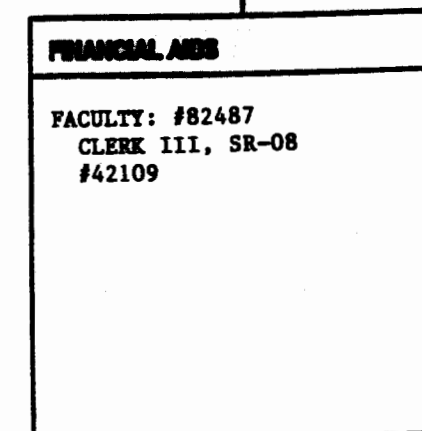
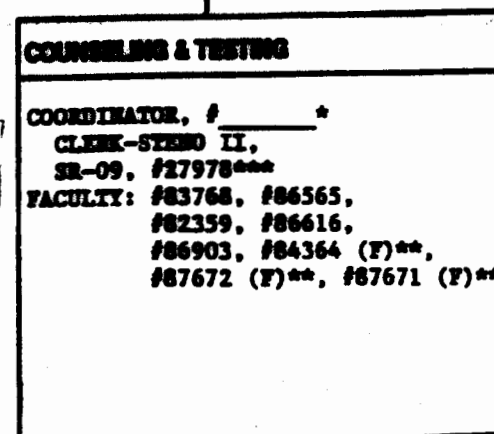
Joyce S. Tsunoda

Joyce S. Tsunoda
Senior Vice President & Chancellor for Community Colleges

DATE: January 28, 1993



MARY To Inoué
FACULTY TITLE ✓
ON UPDATE



*Coordinator is appointed from among faculty positions within unit.
**Temporary Position

Superseded Reorg.
1/28/93

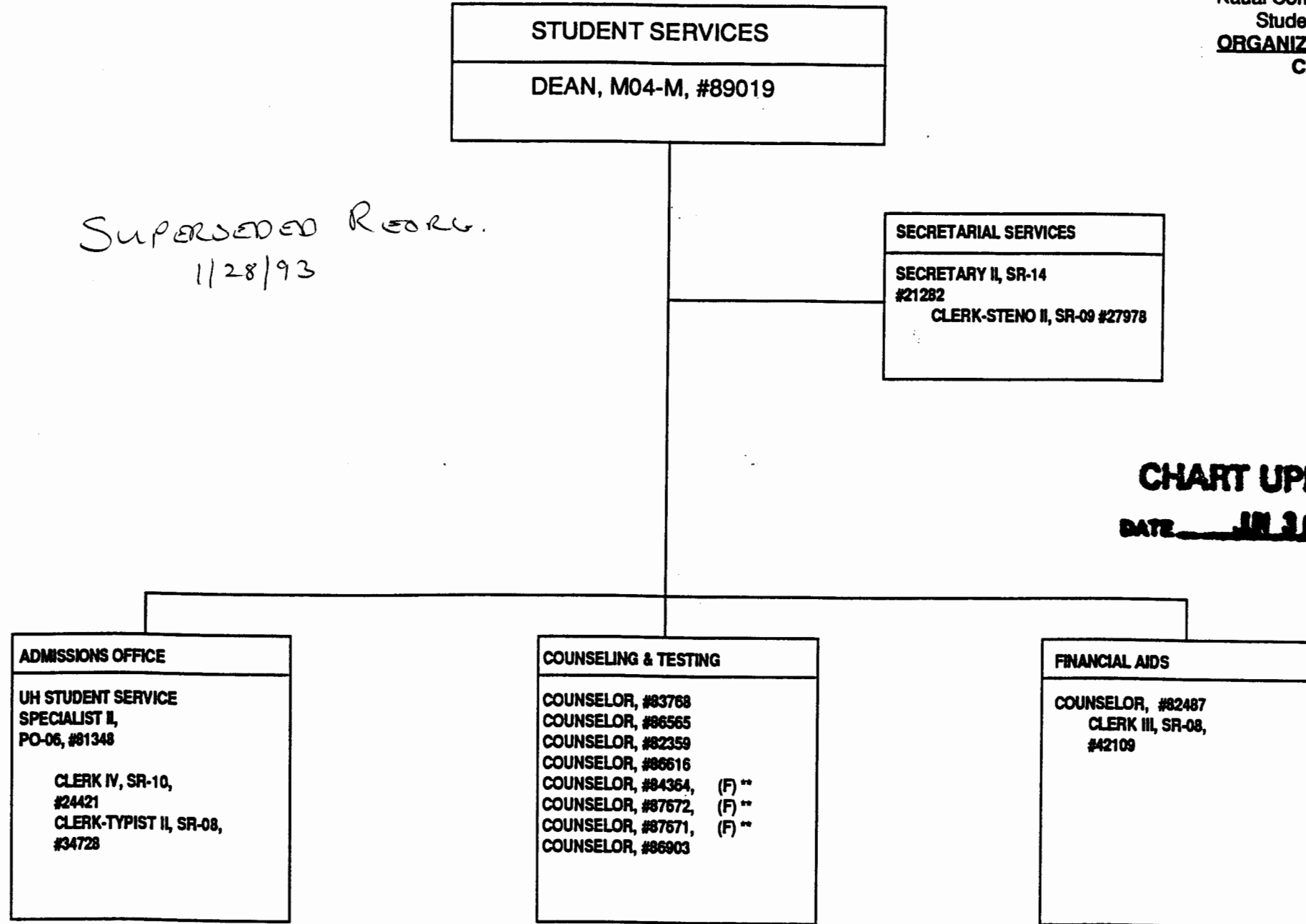
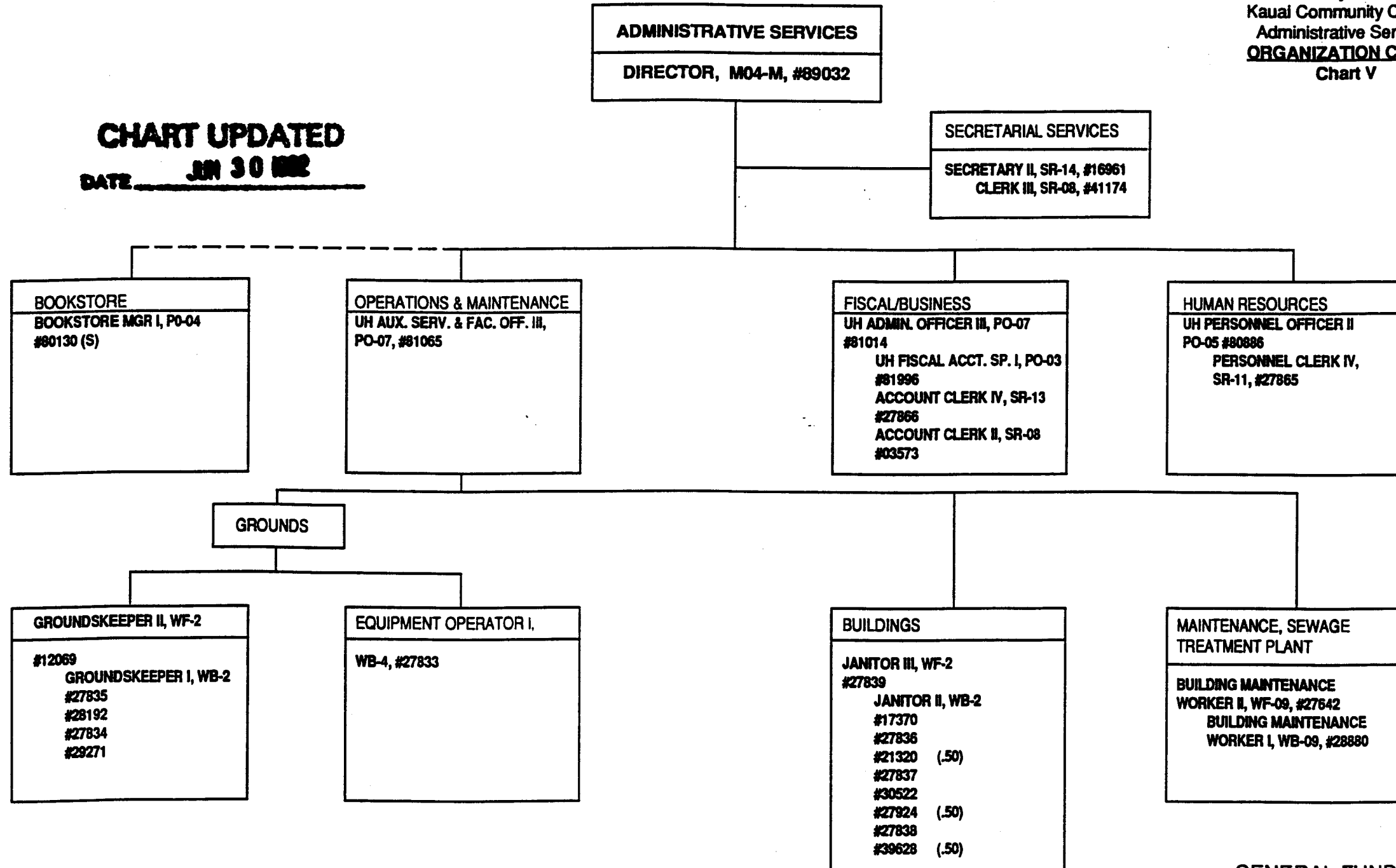


CHART UPDATED
DATE JUL 30 1992

** TEMPORARY POSITION

GENERAL FUNDS 13.00

CHART UPDATED
DATE JUN 30 1992



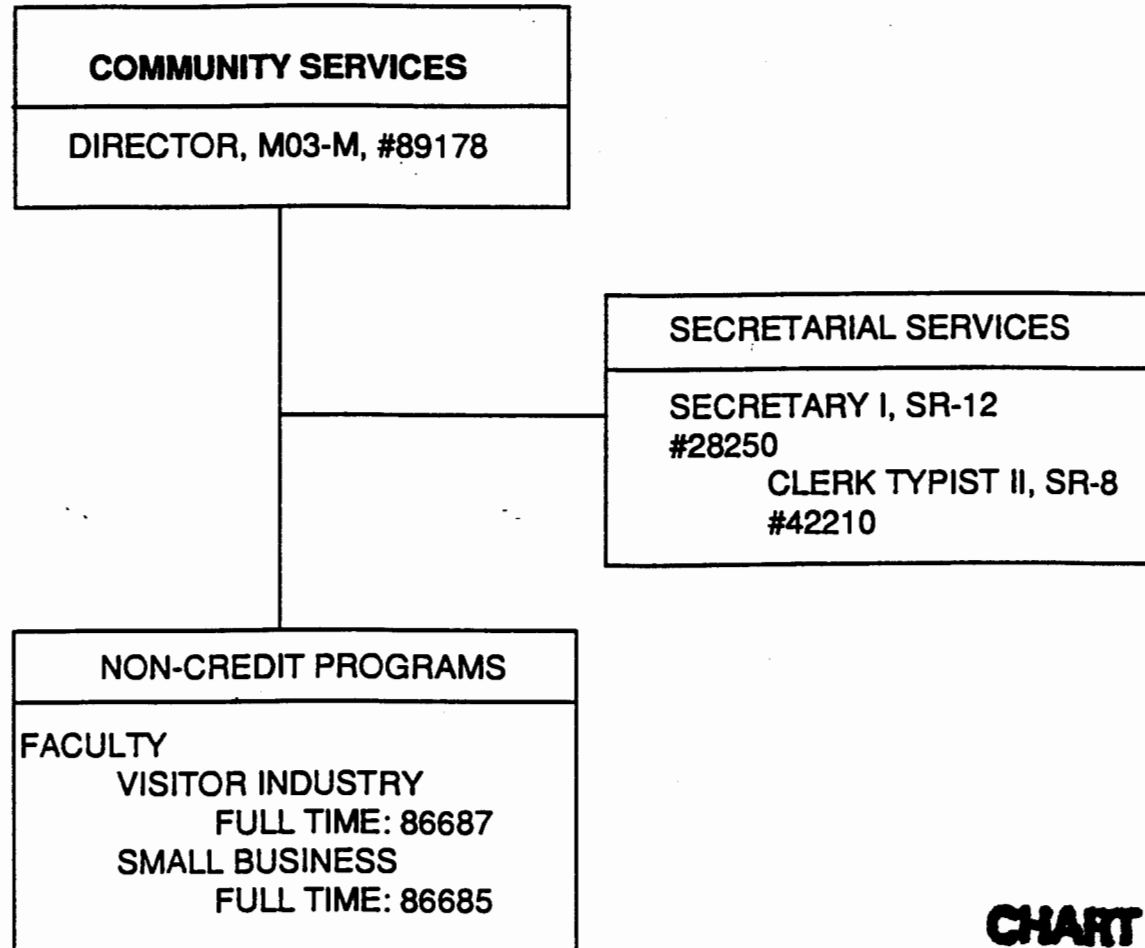


CHART UPDATED
DATE JUN 30 1992

GENERAL FUNDS 5.00