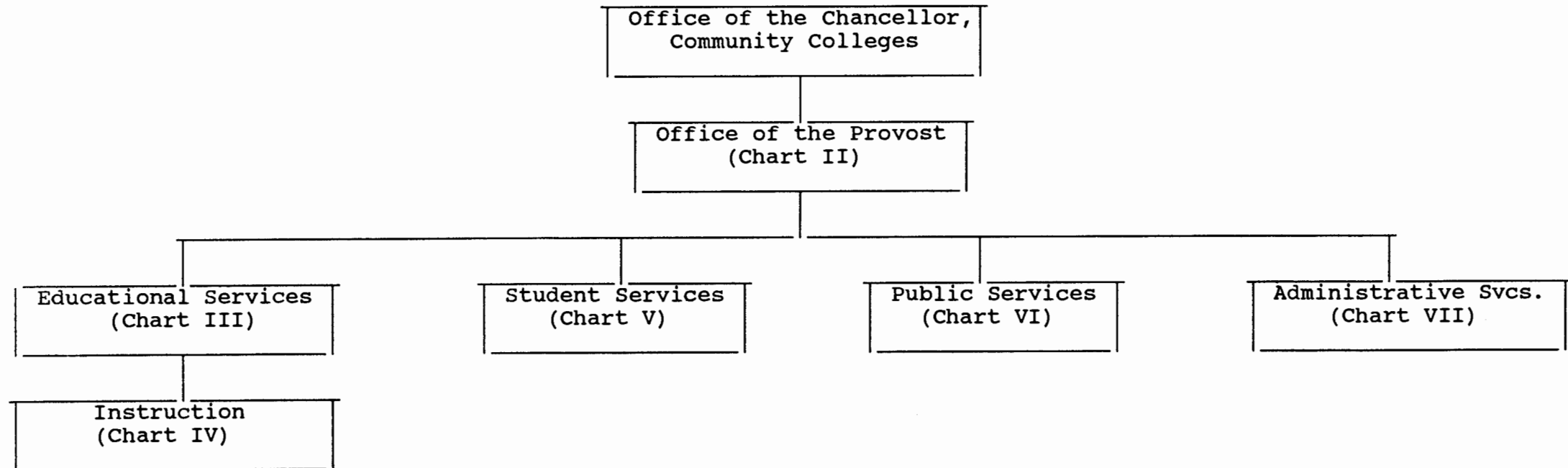


STATE OF HAWAII  
UNIVERSITY OF HAWAII  
LEEWARD COMMUNITY COLLEGE

Position Organization chart

CHART I

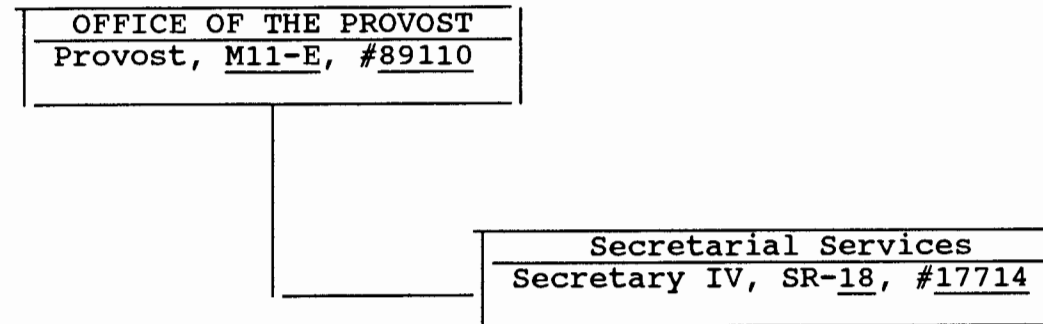


**CHART UPDATED**  
DATE JUN 30 1992

STATE OF HAWAII  
UNIVERSITY OF HAWAII  
LEEWARD COMMUNITY COLLEGE  
OFFICE OF THE PROVOST

Position Organization Chart 06/30/92

Chart II



GENERAL FUNDS 2.00

CHART UPDATED  
DATE JUN 30 1992

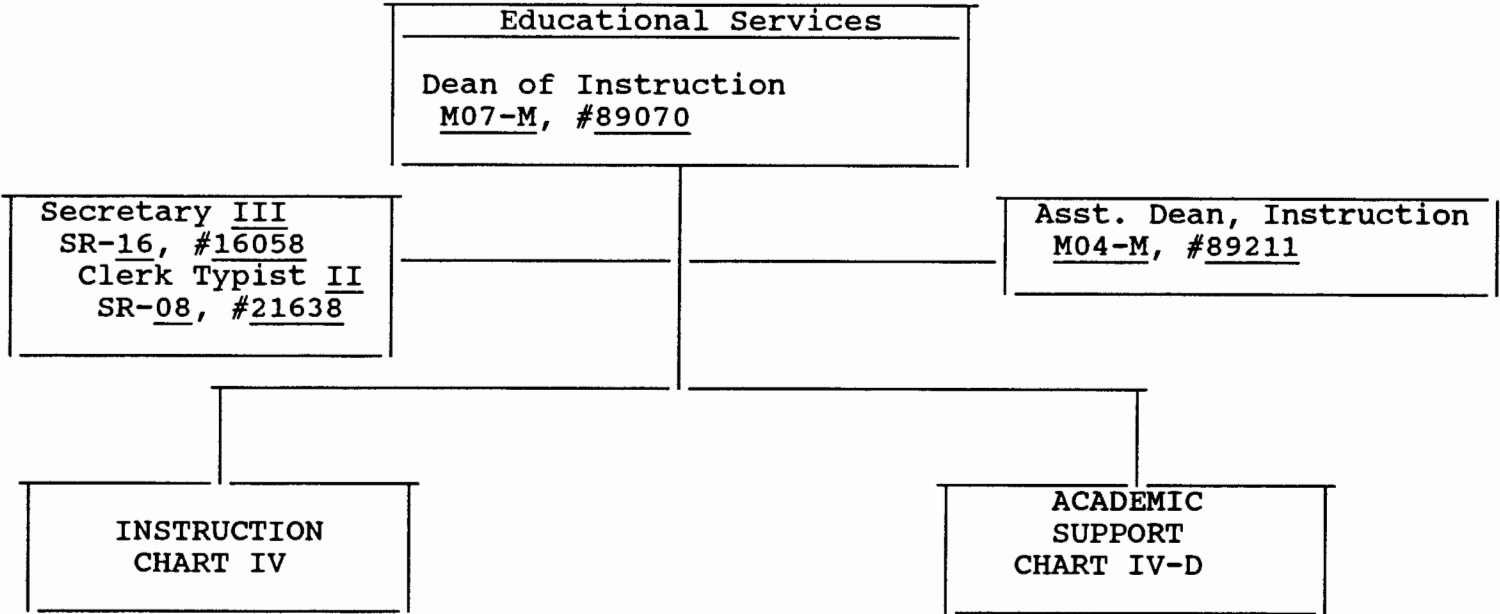
STATE OF HAWAII  
UNIVERSITY OF HAWAII  
LEEWARD COMMUNITY COLLEGE

EDUCATIONAL SERVICES

Position Organization Chart

06/30/92

Chart III



GENERAL FUNDS 4.00

**CHART UPDATED**

DATE JUN 30 1992

STATE OF HAWAII  
UNIVERSITY OF HAWAII  
LEEWARD COMMUNITY COLLEGE

INSTRUCTION

Position Organization Chart 06/30/92  
Chart IV

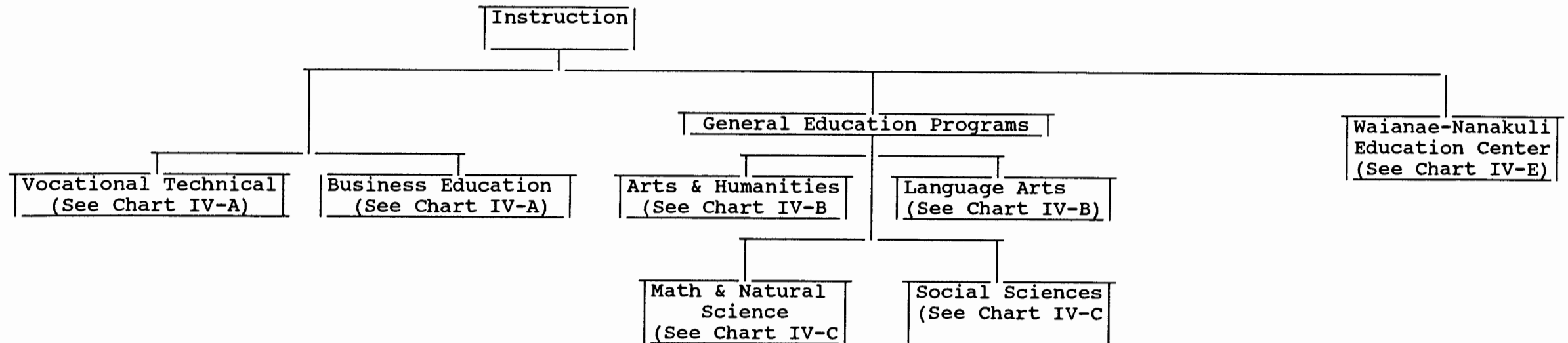


CHART UPDATED

DATE JUN 30 1992

STATE OF HAWAII  
UNIVERSITY OF HAWAII  
LEEWARD COMMUNITY COLLEGE

DEAN OF INSTRUCTION

INSTRUCTION

Position Organization Chart 06/30/92

Chart IV-A

Vocational Technical

Chairperson\*

Secretary II, SR-14, #22698

Faculty Total (15.50)

Health, Phys. Ed. & Rec.

Full-time: #82731

Food Service

Full-time: #83669, #83145, #84266  
#86583, #84779

Commercial Arts

Full-time: #82697

Auto Mechanics Tech

Full-time: #82495, #84314, #83835  
#84885, #82953

Drafting Technology

Full-time: #82721, #83309  
#82530 (.5)

TV Production

Full-time: #86654

Classified

Kitchen Helper, WB-02, #45721

Cook I, WB-05, #27088 (W)

Business Education

Chairperson\*

Secretary II, SR-14, #17713

Faculty Total (19.50)

Accounting

Full-time: #84275, #82000, #82707  
#83865, #82461, #84621

Business

Full-time: #84589, #82326, #84157  
Part-time: #84780 (.4), #82116 (.5)

Sales and Management

Full-time: #83374, #83140  
Part-time: #84780 (.6)

Ofc. Admin. & Tech

Full-time: #82264, #83064, #83829  
#83983, #82400, #82489  
#83103

\*Rotating Position

GENERAL FUNDS 38.00  
(W) REVOLVING FUNDS 1.00

CHART UPDATED

DATE JUN 30 1992

STATE OF HAWAII  
UNIVERSITY OF HAWAII  
LEEWARD COMMUNITY COLLEGE

General Education Programs

GENERAL EDUCATION PROGRAMS

**CHART UPDATED**

JUN 30 1992

DATE

Position Organization Charts 06/30/92

CHART IV-B

Math & Natural Sciences  
Chart IV-C

Social Sciences  
See Chart IV-C

Arts & Humanities

Chairperson\*

Secretary II, SR-14, #17711

Faculty Total (23.10)

Art

Full-time: #82890, #82247, #82502, #84086

Music

Full-time: #82239, #84426, #84014

Part-time: #83636 (.5), #82116A (.5)

Dance

Part-time: #83636 (.5)

Drama & Theatre

Full-time: #83105

Part-time: #83181 (.5)

Philosophy

Full-time: #82941, #83907

Religion

Full-time: #83808

Part-time: #82021 (.6)

History

Full-time: #84018, #84026, #82581, #82306,

#83474, #83887

Part-time: #84104 (.8)

Humanities

Full-time: #82427, #86688

Part-time: #83181 (.5), #84104 (.2)

Language Arts

Chairperson\*

Secretary II, SR-14, #17710

Faculty Total (38.0)

English

Full-time: #82960, #83945, #84027, #83850, #84181

#84602, #84653, #84883, #83472, #83570

#83605, #83697, #82129, #82409, #82498

#82570, #82932, #86399, #83210, #86789

#86790, #86791, #86842, #86843, #86844

Part-time: #83607 (.75), #84098 (.4), #84490 (.4)

Asian Pacific Languages

Full-time: #82692, #83442, #82888

Part-time: #84098 (.6)

Journalism

Part-time: #84490 (.6)

European Language

Full-time: #82165, #82645, #82872

Part-time: #83607 (.25)

English as a Second Language

Full-time: #84555

Speech

Full-time: #82496, #82273

Communication

Full-time: #84606

# General Education Programs

STATE OF HAWAII  
UNIVERSITY OF HAWAII  
LEEWARD COMMUNITY COLLEGE

## GENERAL EDUCATION PROGRAMS

Position Organization Chart 06/30/92

**CHART UPDATED**

DATE JUN 30 1992

Arts & Humanities  
See Chart IV-B

Language Arts  
See Chart IV-B

Chart IV-C

### Math & Sciences

Chairperson\*  
Secretary II, SR-14, #17712  
Faculty Total (33.0)  
Biological Science  
Full-time: #82225, #84384, #84679, #82134  
Part-time: #84849 (.2)  
Mathematics  
Full-time: #82024, #82522, #84776, #82470, #83055, #82845  
#84429, #82035, #84777, #83965, #86642\*\*  
#83479, #83180, #87076  
Part-time: #83660 (.4)  
Chemistry  
Full-time: #83218, #82085, #82517  
Part-time: #84160 (.8)  
Oceanography  
Full-time: #83248  
Part-time: #84849 (.8), #83847 (.2)  
Physical Science  
Full-time: #82277, #82670, #82404  
Part-time: #83847 (.8), #83660 (.6)  
Science  
Part-time: #84160 (.2)  
Data Processing  
Full-time: #82986, #83161, #84557, #84069  
UH Ed & Acad Supp Sp, PO 1, #81873

### Social Sciences

Chairperson\*  
Secretary II, SR-14, #19604  
Faculty Total (16.40)  
Psychology  
Full-time: #83104  
Part-time: #82017 (.8), #82799 (.8)  
#84466 (.8), #82691 (.6)  
Anthropology  
Full-time: #83464, #83615  
Economics  
Full-time: #83369, #83129, #83759  
Part-time: #84441 (.6)  
Geography  
Full-time: #83466  
Political Science  
Full-time: #84634  
Social Science  
Part-time: #84358 (.2)  
Sociology  
Part-time: #84358 (.8), #82021 (.4), #84441 (.4),  
#82543 (.6)  
Human Development  
Part-time: #82017 (.2), #82799 (.2)  
Human Services  
Full-time: #82029  
Part-time: #82691 (.4), #82543 (.4), #84466 (.2)

\*Rotating Position

\*\*Administratively assigned to Waianae-Nanakuli Education Center

GENERAL FUNDS 52.40

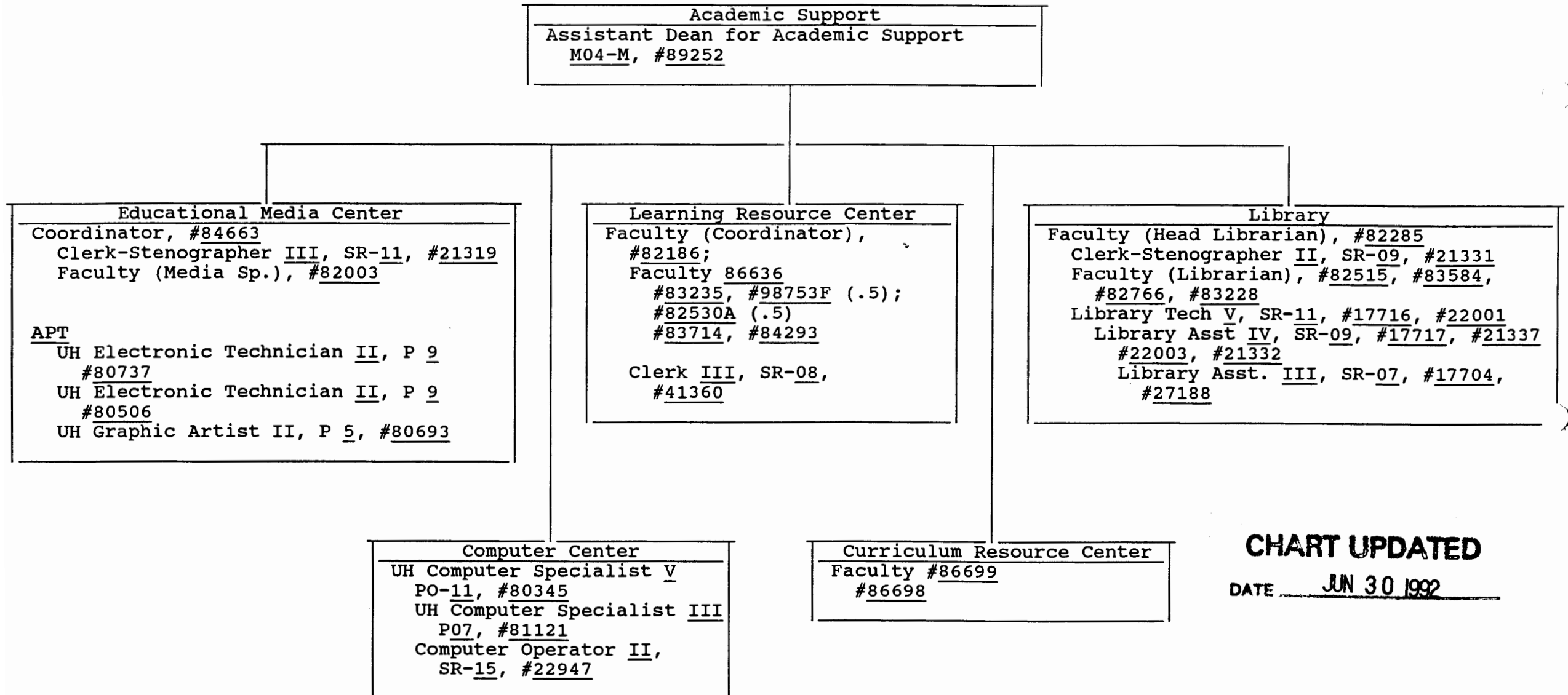
STATE OF HAWAII  
UNIVERSITY OF HAWAII  
LEEWARD COMMUNITY COLLEGE

ACADEMIC SUPPORT

Position Organization Chart

06/30/92

Chart IV-D



**CHART UPDATED**

DATE JUN 30 1992



STATE OF HAWAII  
UNIVERSITY OF HAWAII  
LEEWARD COMMUNITY COLLEGE

INSTRUCTION  
Waianae-Nanakuli-Instruction

Position Organization Chart 06/30/92

Chart IV-E

Waianae-Nanakuli Education Center
Coordinator* (1.0)
Clerk Steno <u>II</u> , SR <u>09</u> , # <u>26797</u> , (1.0)
Educ. Spec. <u>I</u> , P <u>03</u> , # <u>81032</u> , (1.0)
#Faculty (2.0)

\*Rotating faculty position; administratively assigned

#Rotating faculty positions from divisions

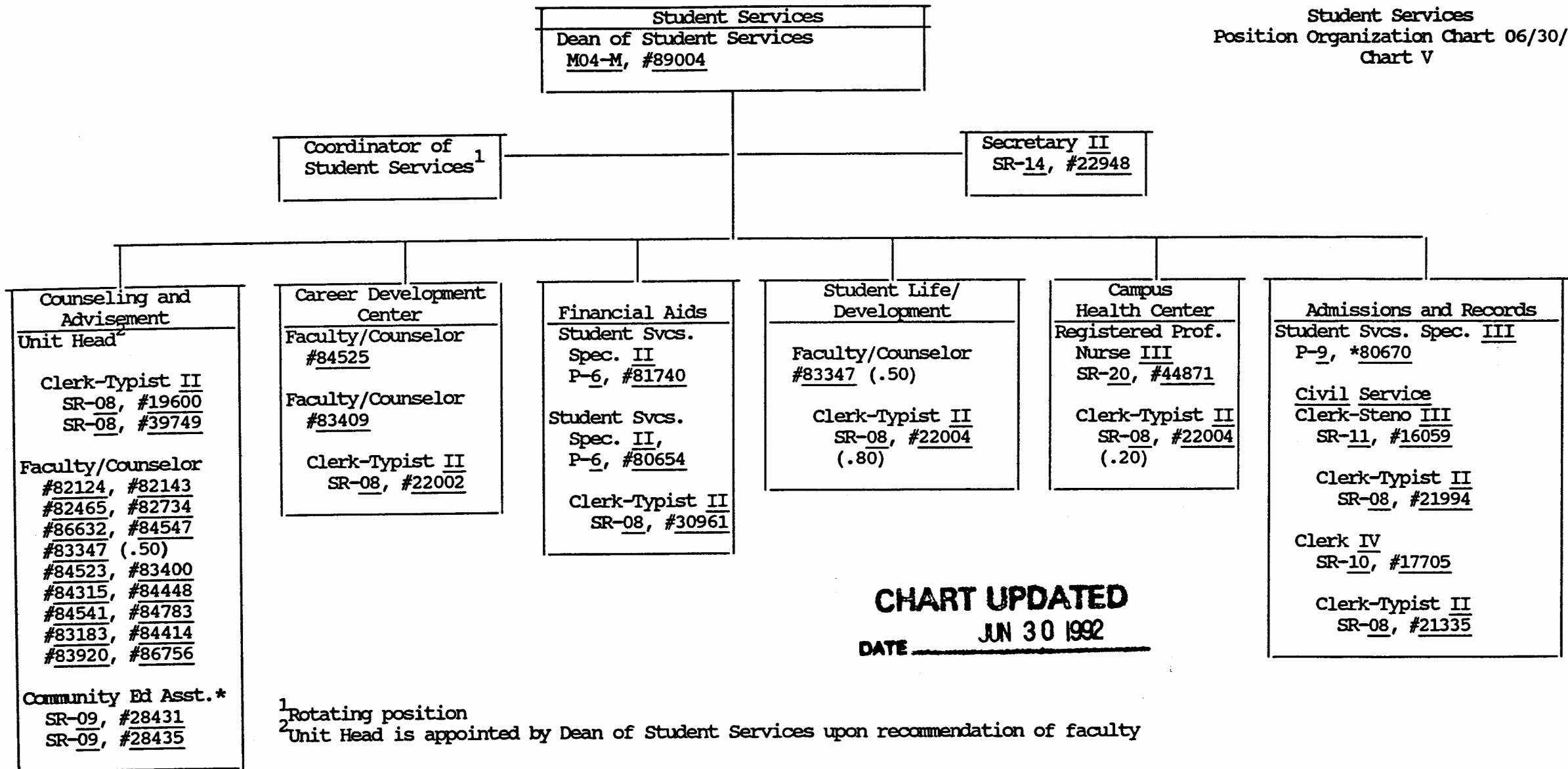
GENERAL FUNDS 2.00

**CHART UPDATED**

DATE JUN 30 1992

State of Hawaii  
University of Hawaii  
Leeward Community College

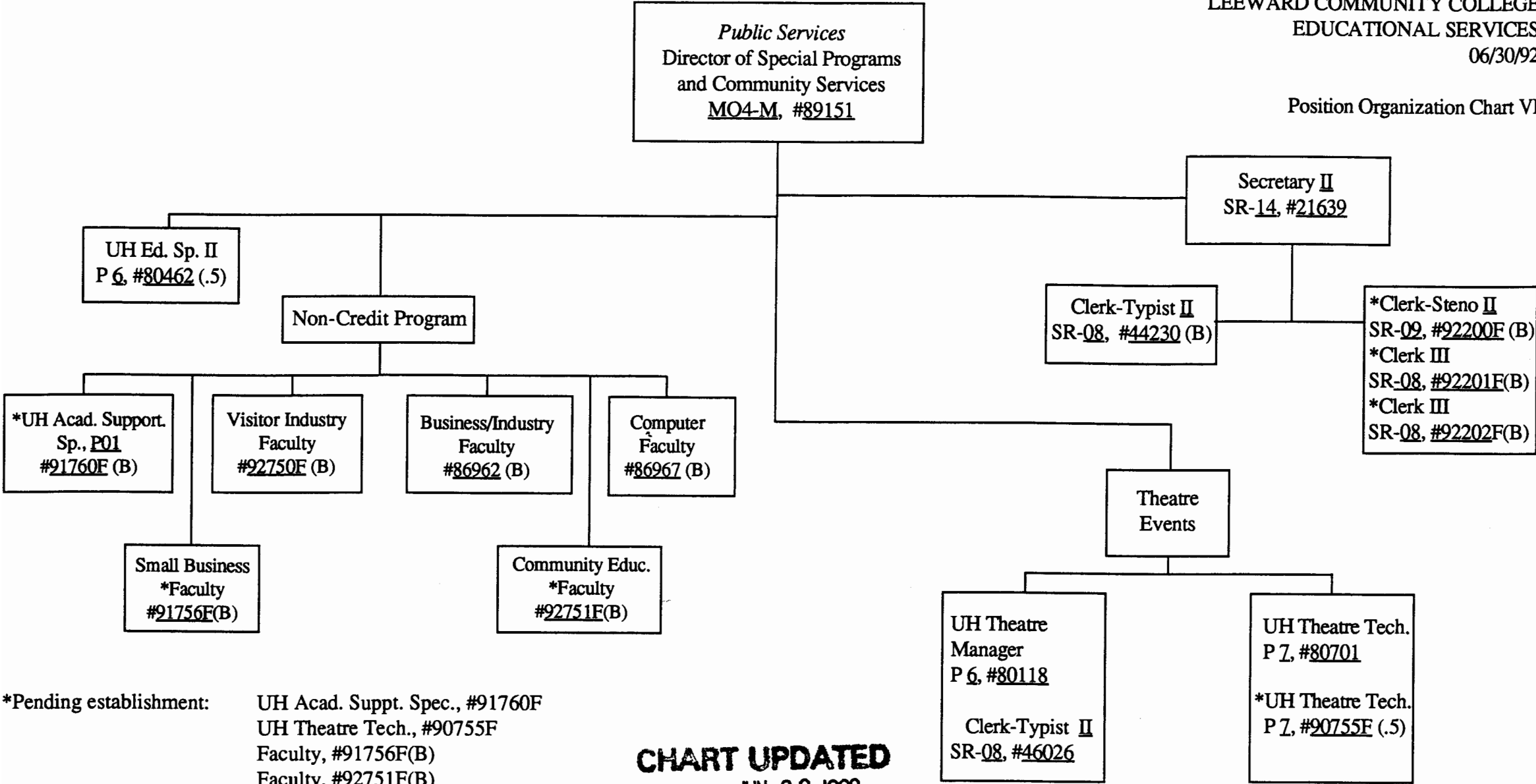
Student Services  
Position Organization Chart 06/30/92  
Chart V



\*Assigned to Waianae-Nanakuli Education Center

GENERAL FUNDS 36.00

Position Organization Chart VI



\*Pending establishment:

- UH Acad. Suppt. Spec., #91760F
- UH Theatre Tech., #90755F
- Faculty, #91756F(B)
- Faculty, #92751F(B)
- Clerk-Steno II, #90202F (B)
- Clerk III, #92201F(B)
- Clerk III, #92202F(B)
- Faculty, #92750F(B)

**CHART UPDATED**  
JUN 30 1992  
DATE \_\_\_\_\_

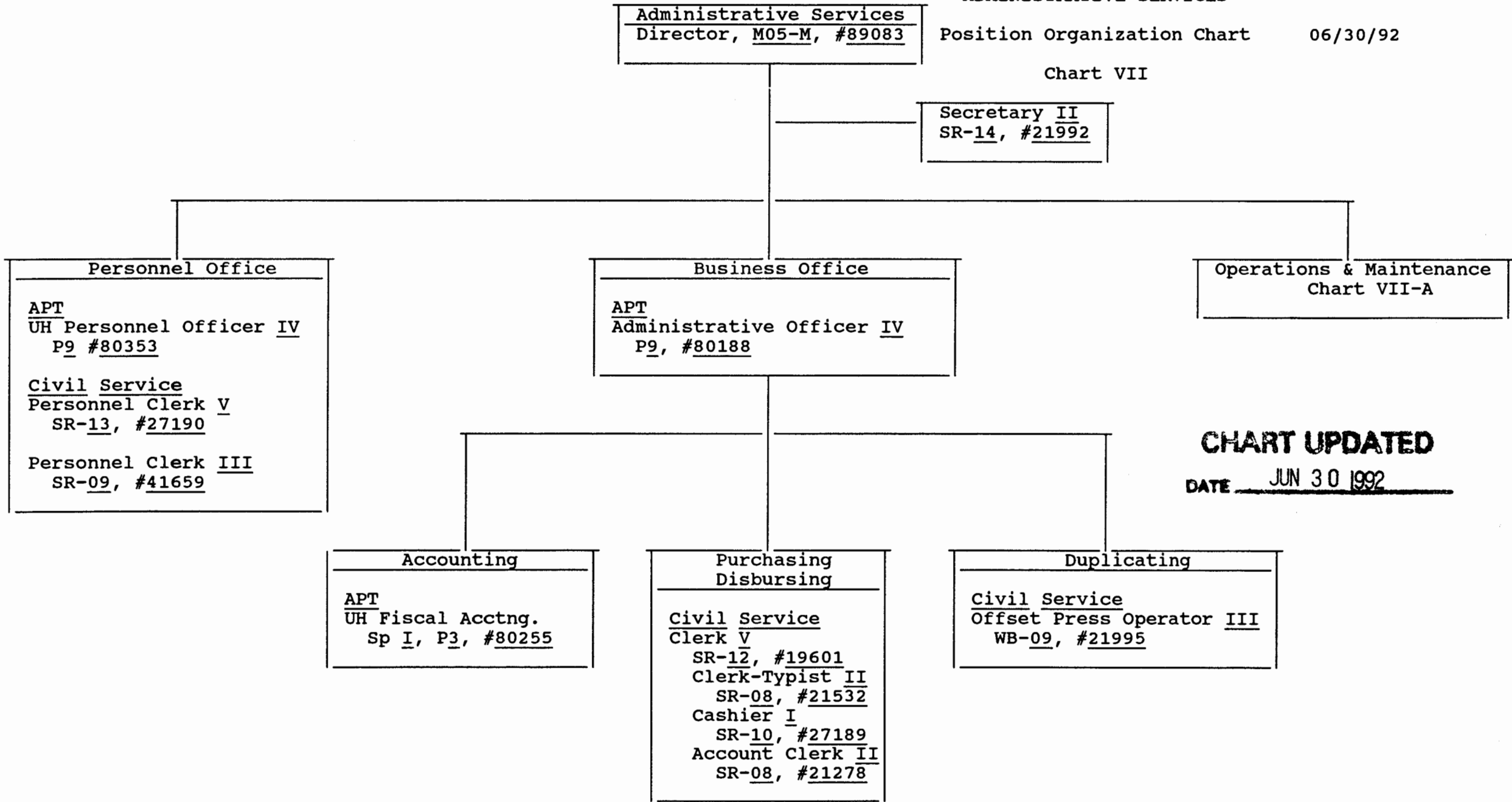
GENERAL FUNDS	6.00
(B) SPECIAL FUNDS	10.00

STATE OF HAWAII  
UNIVERSITY OF HAWAII  
LEEWARD COMMUNITY COLLEGE

ADMINISTRATIVE SERVICES

Position Organization Chart 06/30/92

Chart VII

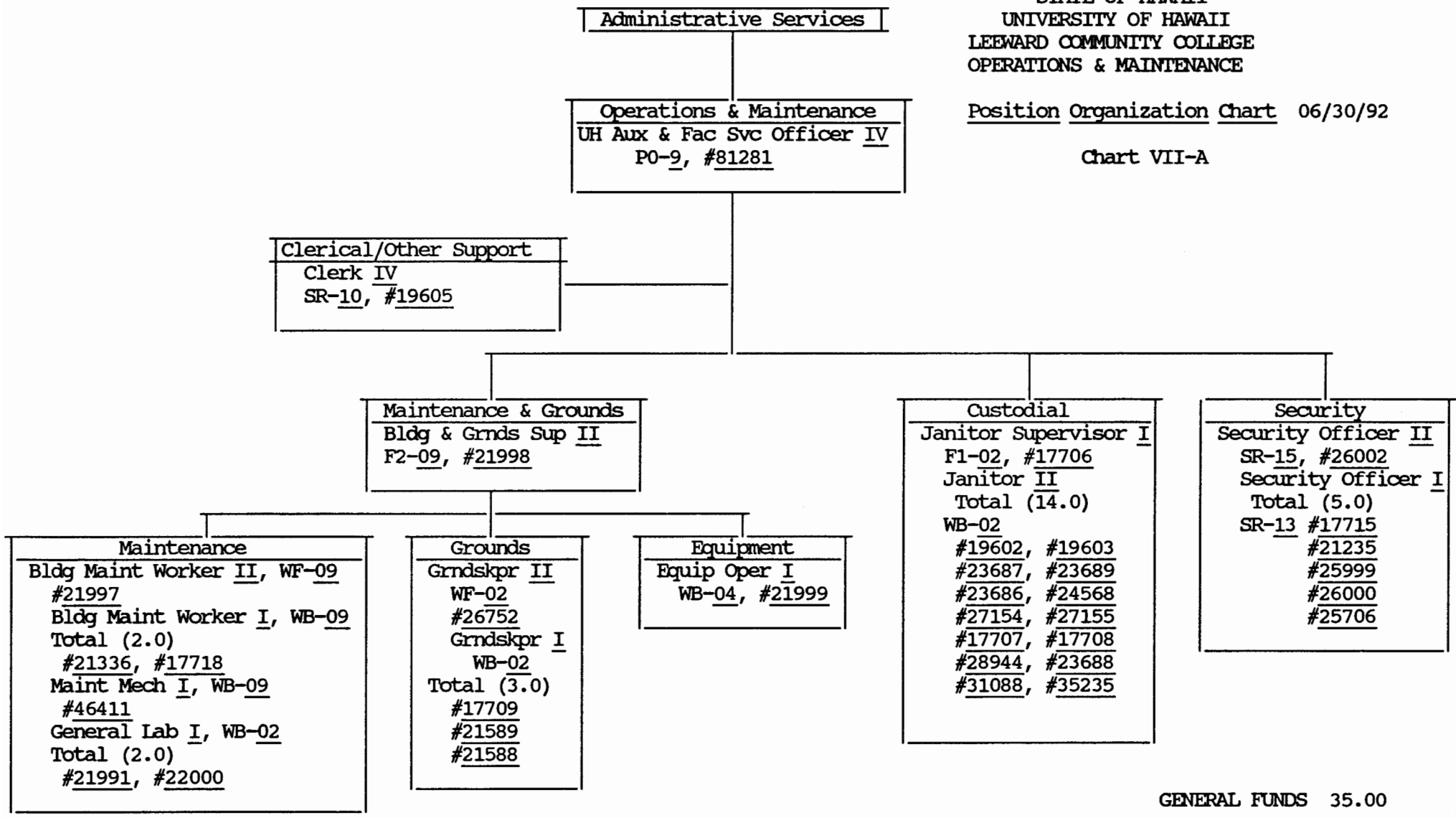


**CHART UPDATED**  
DATE JUN 30 1992

STATE OF HAWAII  
UNIVERSITY OF HAWAII  
LEEWARD COMMUNITY COLLEGE  
OPERATIONS & MAINTENANCE

Position Organization Chart 06/30/92

Chart VII-A



GENERAL FUNDS 35.00

**CHART UPDATED**

DATE JUN 30 1992