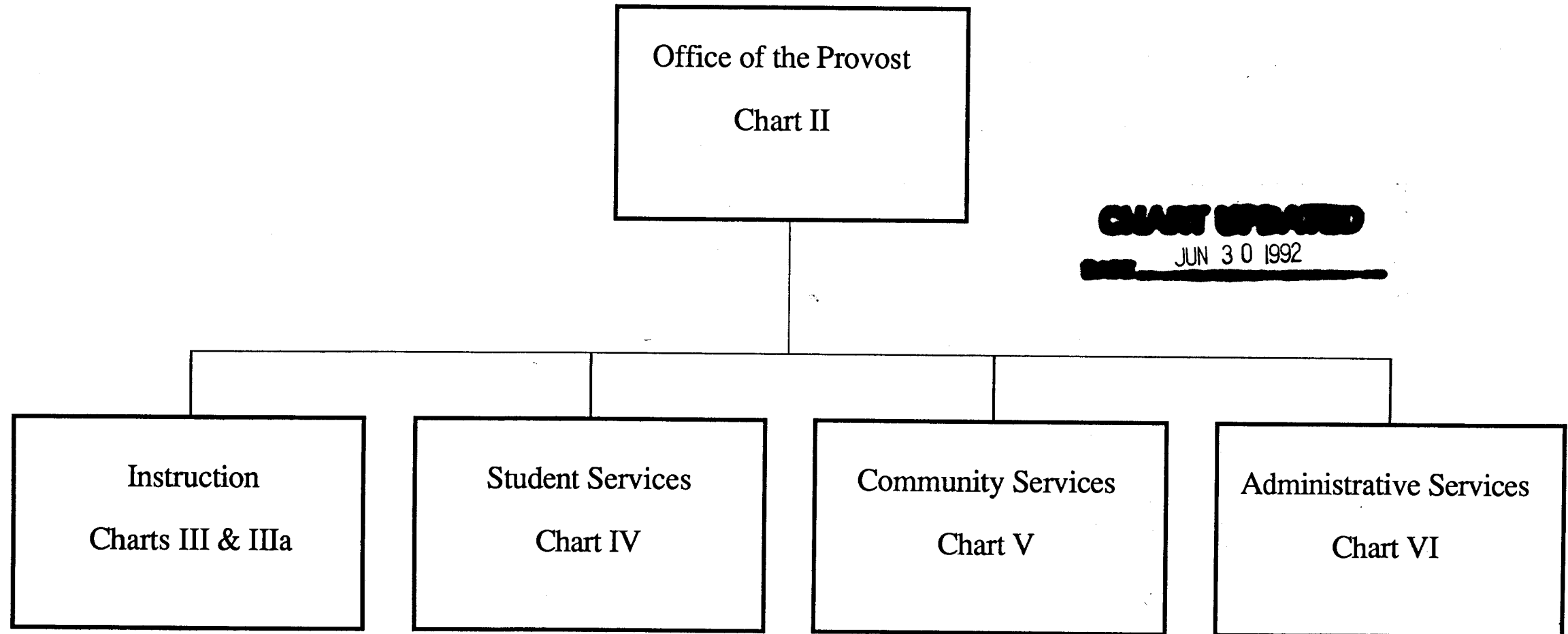


State of Hawaii  
UNIVERSITY OF HAWAII  
WINDWARD COMMUNITY COLLEGE  
POSITION ORGANIZATION CHART

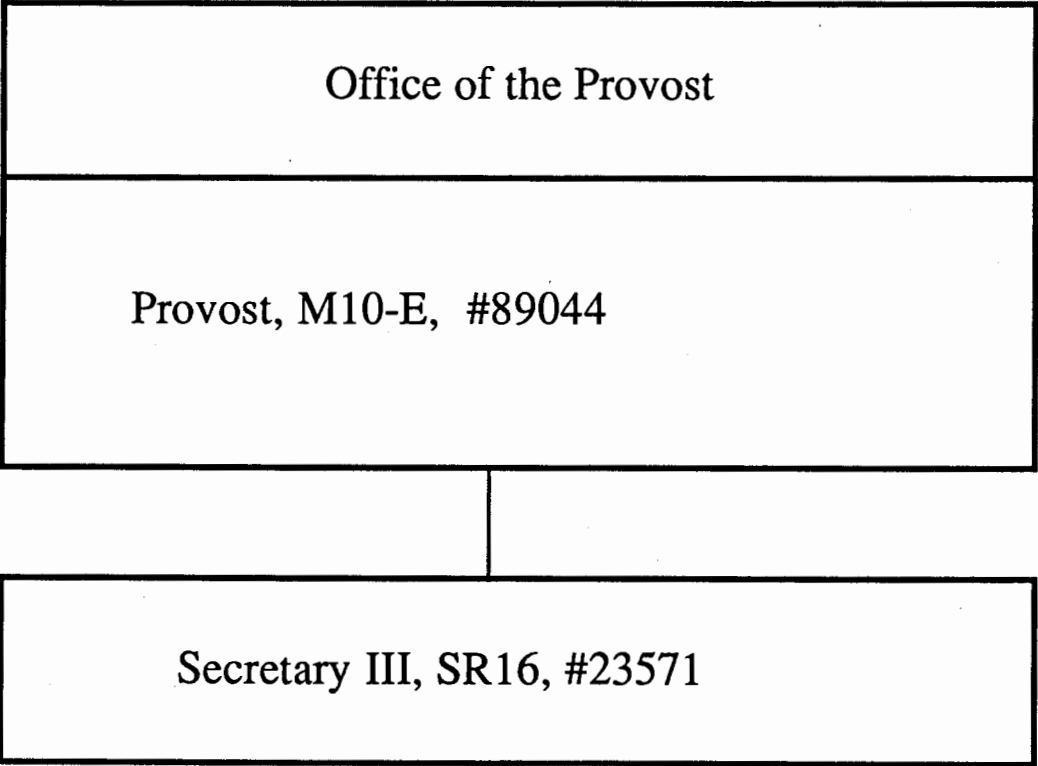
CHART I



**CHART UPDATED**  
**JUN 30 1992**

State of Hawaii  
UNIVERSITY OF HAWAII  
WINDWARD COMMUNITY COLLEGE

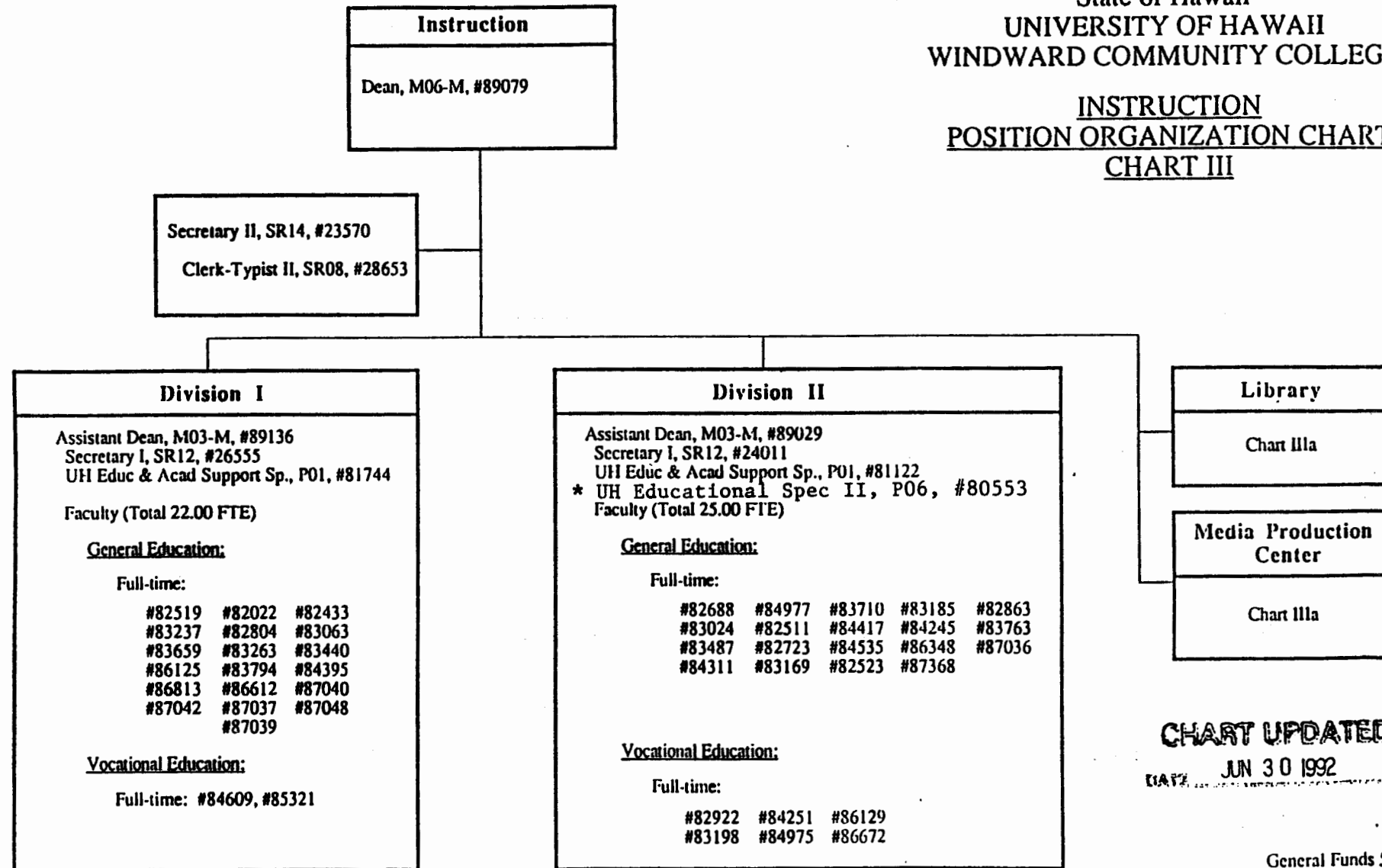
OFFICE OF THE PROVOST  
POSITION ORGANIZATION CHART  
CHART II



**CHART UPDATED**  
**DATE JUN 30 1992**

State of Hawaii  
UNIVERSITY OF HAWAII  
WINDWARD COMMUNITY COLLEGE

INSTRUCTION  
POSITION ORGANIZATION CHART  
CHART III



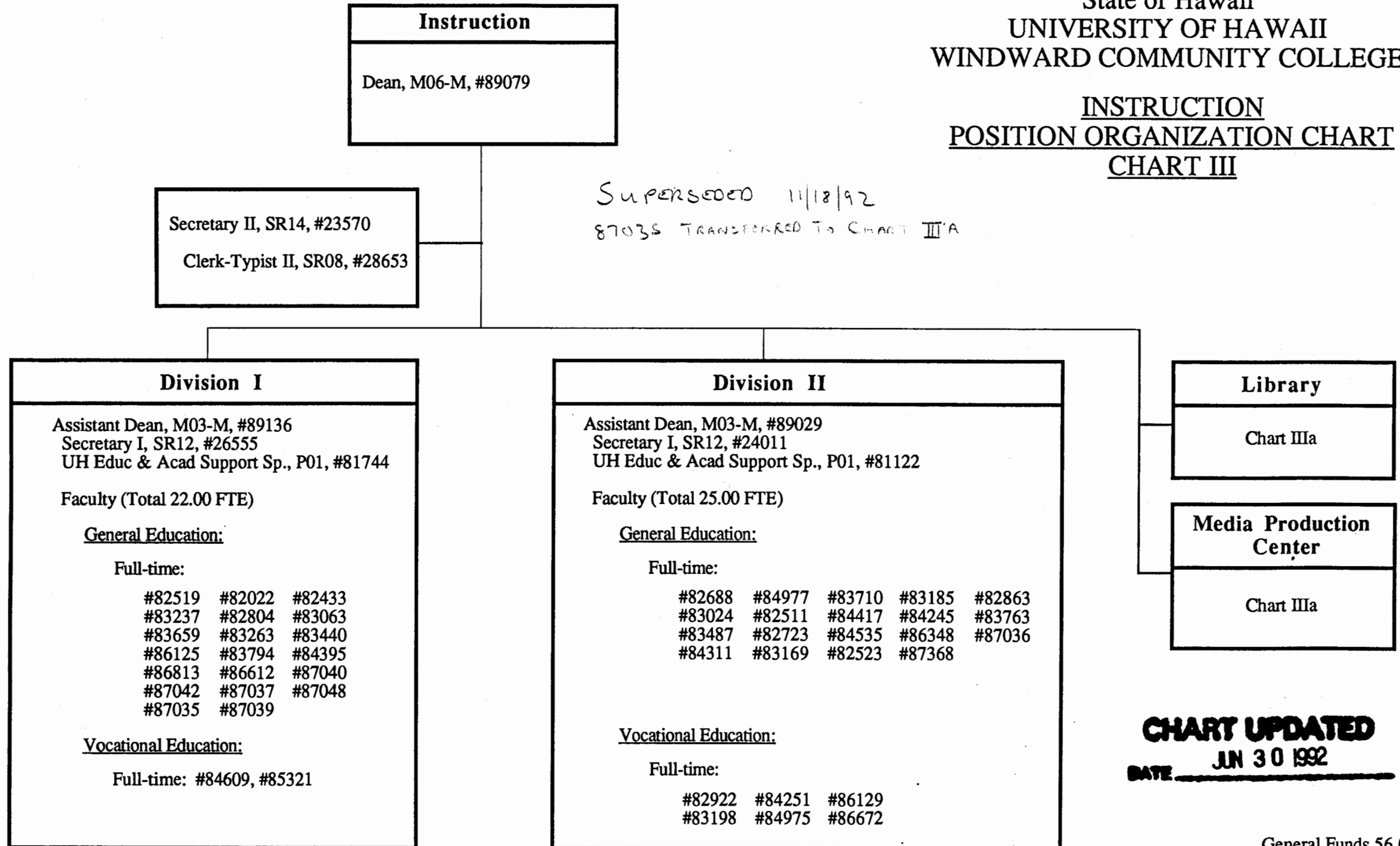
\*To be submitted for downward reallocation

APPROVED:

*John S. [Signature]* Vice Chancellor for  
Name and Title Administrative Affairs  
DATE: 11/18/92

State of Hawaii  
UNIVERSITY OF HAWAII  
WINDWARD COMMUNITY COLLEGE

INSTRUCTION  
POSITION ORGANIZATION CHART  
CHART III

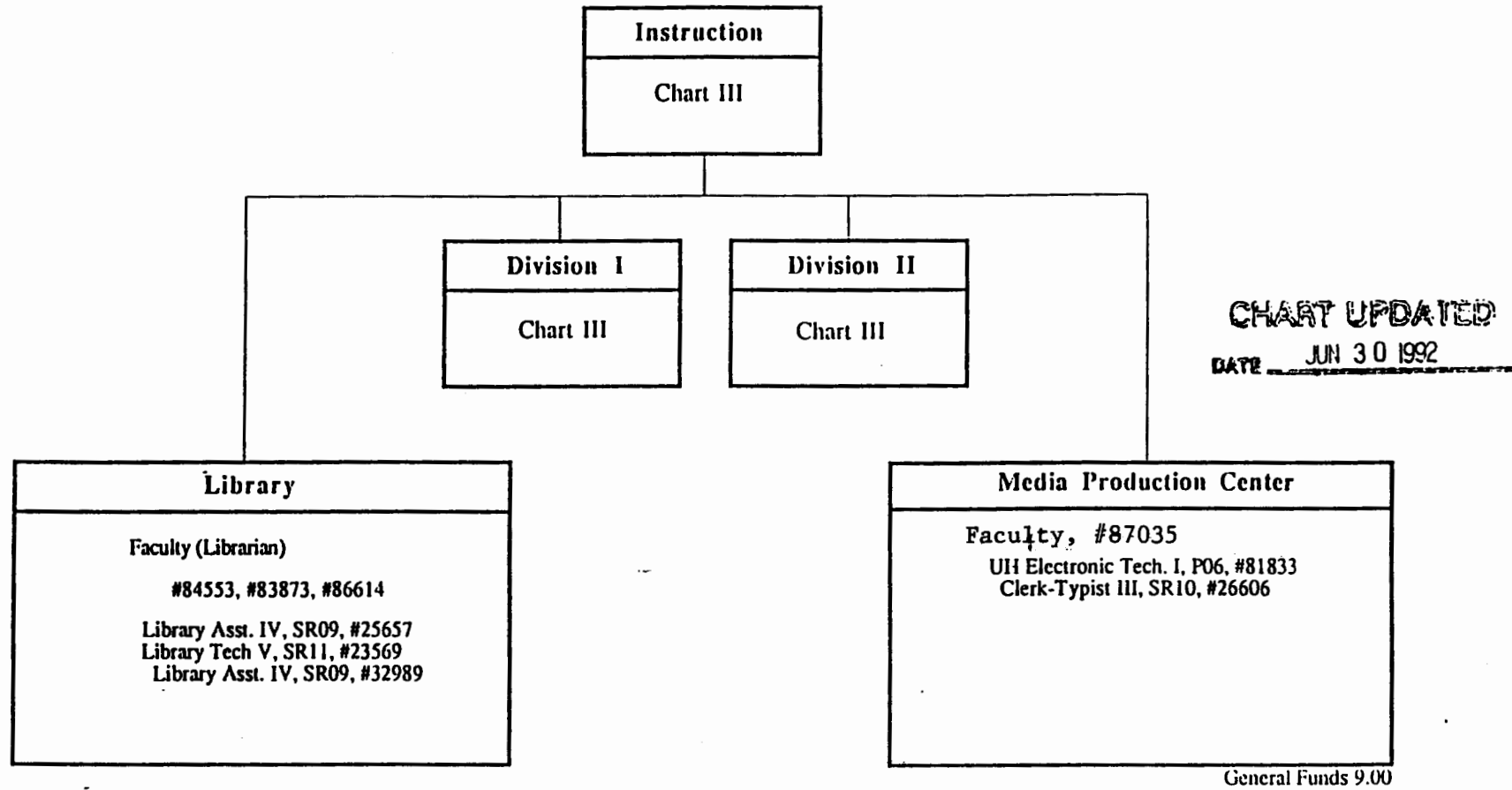


**CHART UPDATED**  
**JUN 30 1992**  
DATE \_\_\_\_\_

General Funds 56.00

State of Hawaii  
UNIVERSITY OF HAWAII  
WINDWARD COMMUNITY COLLEGE

INSTRUCTION  
POSITION ORGANIZATION CHART  
CHART IIIa



APPROVED:

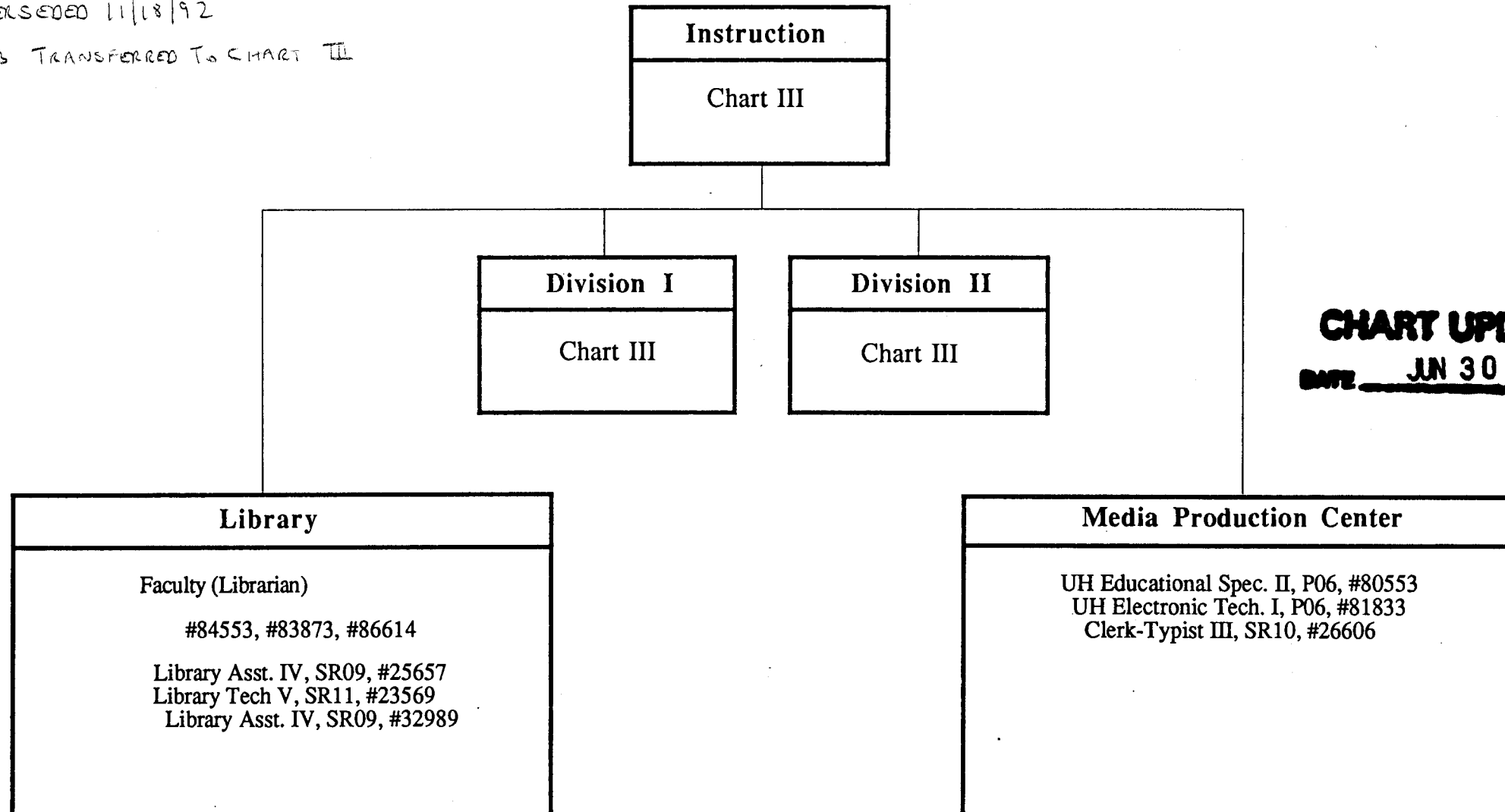
*George S. Higa*  
Name and Title Vice Chancellor for  
Administrative Affairs  
DATE: 11/18/92

State of Hawaii  
UNIVERSITY OF HAWAII  
WINDWARD COMMUNITY COLLEGE

INSTRUCTION  
POSITION ORGANIZATION CHART  
CHART IIIa

SUPERSEDED 11/18/92

80553 TRANSFERRED TO CHART III

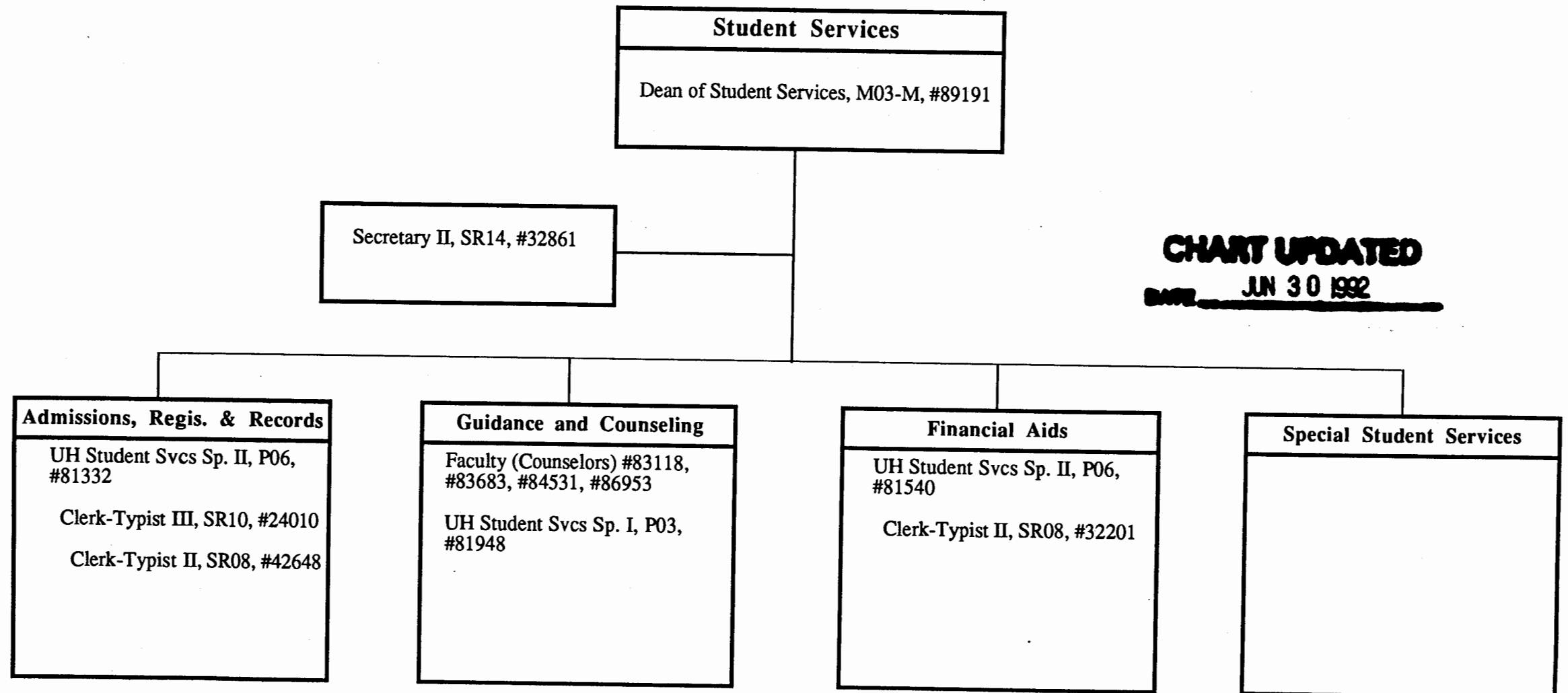


**CHART UPDATED**  
DATE JUN 30 1992

General Funds 9.00

State of Hawaii  
UNIVERSITY OF HAWAII  
WINDWARD COMMUNITY COLLEGE

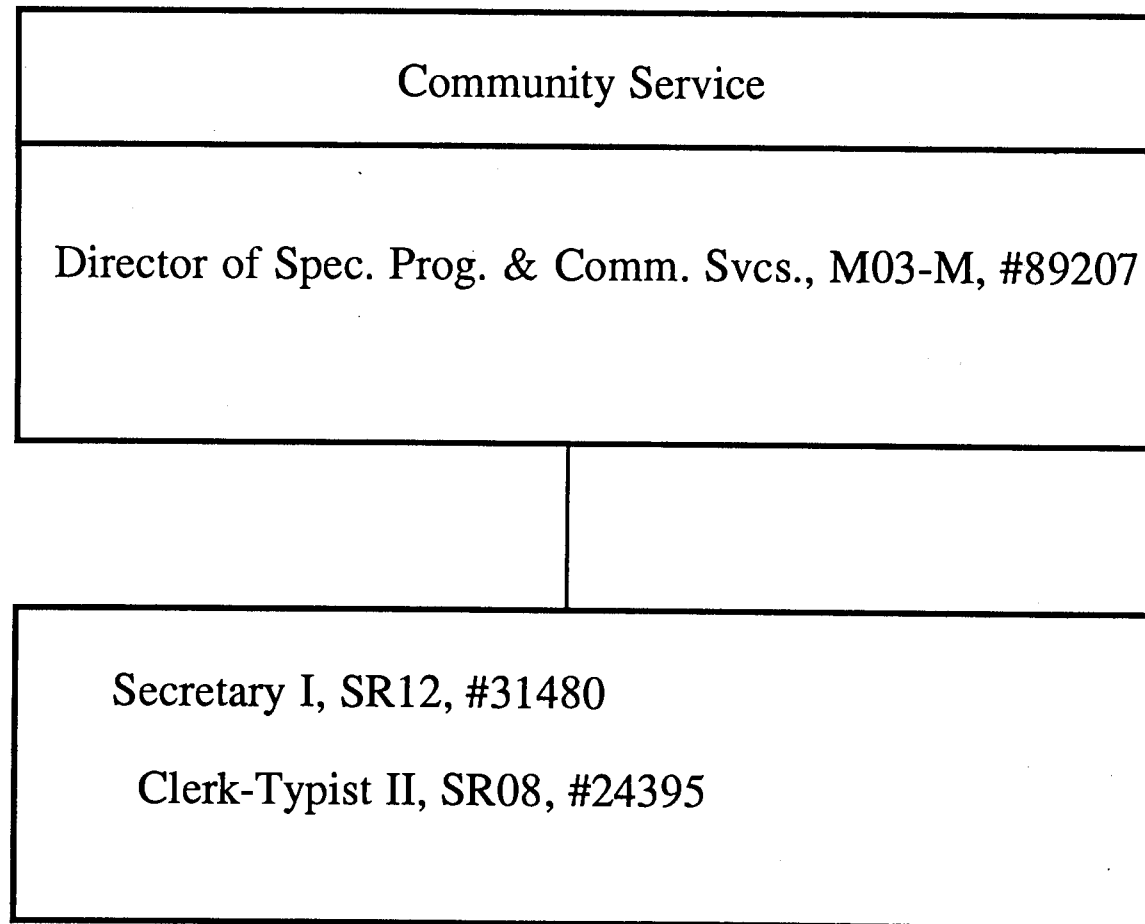
STUDENT SERVICES  
POSITION ORGANIZATION CHART  
CHART IV



**CHART UPDATED**  
**DATE JUN 30 1992**

State of Hawaii  
UNIVERSITY OF HAWAII  
WINDWARD COMMUNITY COLLEGE

COMMUNITY SERVICES  
POSITION ORGANIZATION CHART  
CHART V



**CHART UPDATED**  
**DATE JUN 30 1992**

State of Hawaii  
UNIVERSITY OF HAWAII  
WINDWARD COMMUNITY COLLEGE

ADMINISTRATIVE SERVICES  
POSITION ORGANIZATION CHART  
CHART VI

