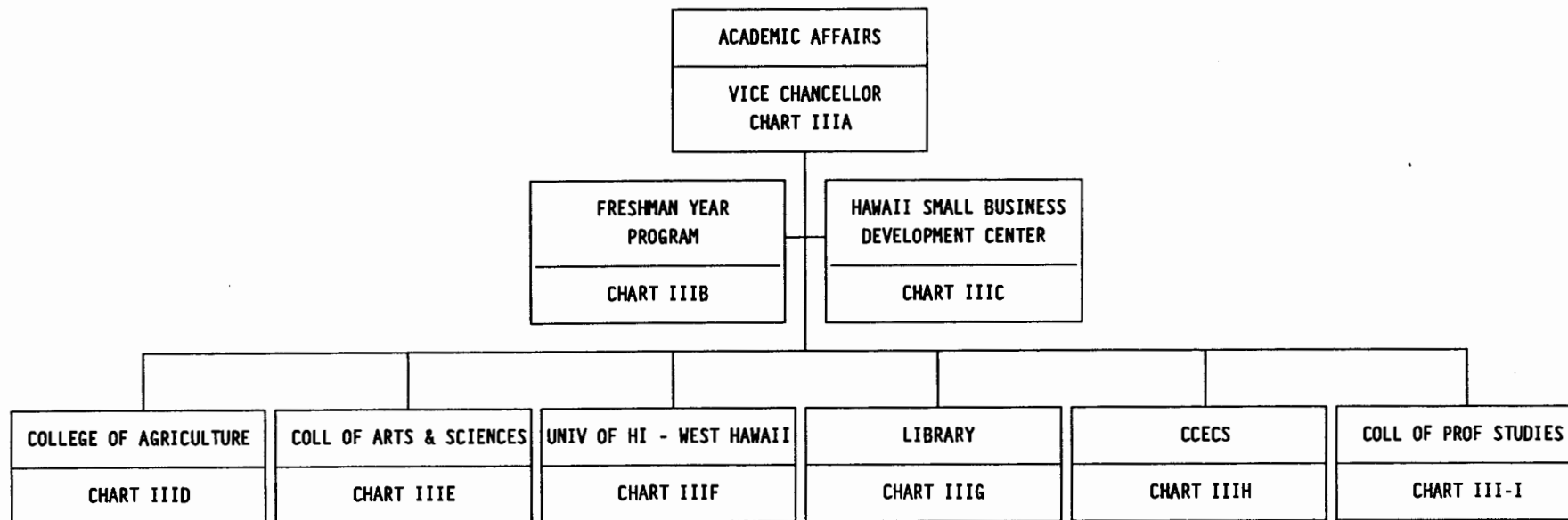


STATE OF HAWAII - UNIVERSITY OF HAWAII  
 UNIVERSITY OF HAWAII AT HILO  
 ACADEMIC AFFAIRS  
 POSITION ORGANIZATION CHART III

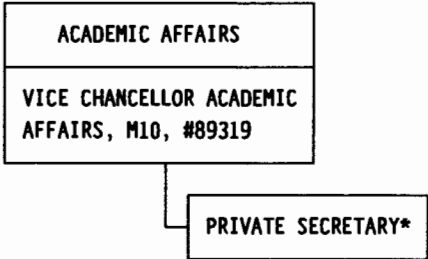


ACADEM.DWG

CHART UPDATED

DATE JUN 30 1992

STATE OF HAWAII - UNIVERSITY OF HAWAII  
UNIVERSITY OF HAWAII AT HILO  
ACADEMIC AFFAIRS - VICE CHANCELLOR  
POSITION ORGANIZATION CHART-CHART IIIA



\*Proposed position

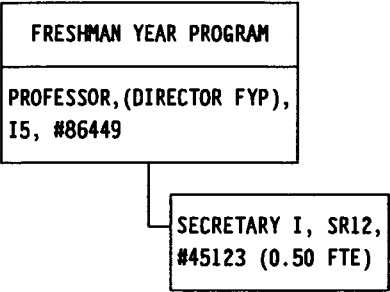
POSITIONS  
GENERAL FUND - 1.00

VCACADEM.DWG

CHART UPDATED

DATE JUN 30 1992

STATE OF HAWAII - UNIVERSITY OF HAWAII  
UNIVERSITY OF HAWAII AT HILO  
ACADEMIC AFFAIRS - FRESH. YR. PROGRAM  
POSITION ORGANIZATION CHART IIIB



POSITIONS  
GENERAL FUND - 1.50

FRESHYR.DWG

CHART UPDATED  
DATE JUN 30 1992

STATE OF HAWAII - UNIVERSITY OF HAWAII  
UNIVERSITY OF HAWAII AT HILO  
HAWAII SMALL BUSINESS DEVELOPMENT CTR  
POSITION ORGANIZATION CHART - CHART IIIC

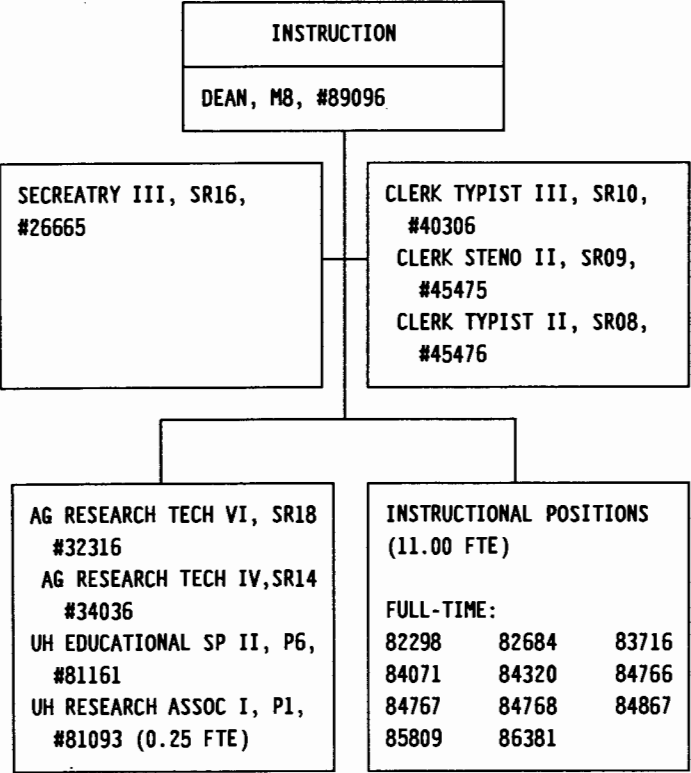
*HAWAII SMALL BUSINESS DEVELOPMENT CENTER
DIRECTOR, M3, #89287 KAUAI DIRECTOR OAHU DIRECTOR MAUI DIRECTOR HAWAII ISLAND DIRECTOR

POSITIONS  
\* RCUH FUNDS - 5.0

SMALLBUS.DWG

CHART UPDATED

DATE JUN 30 1992



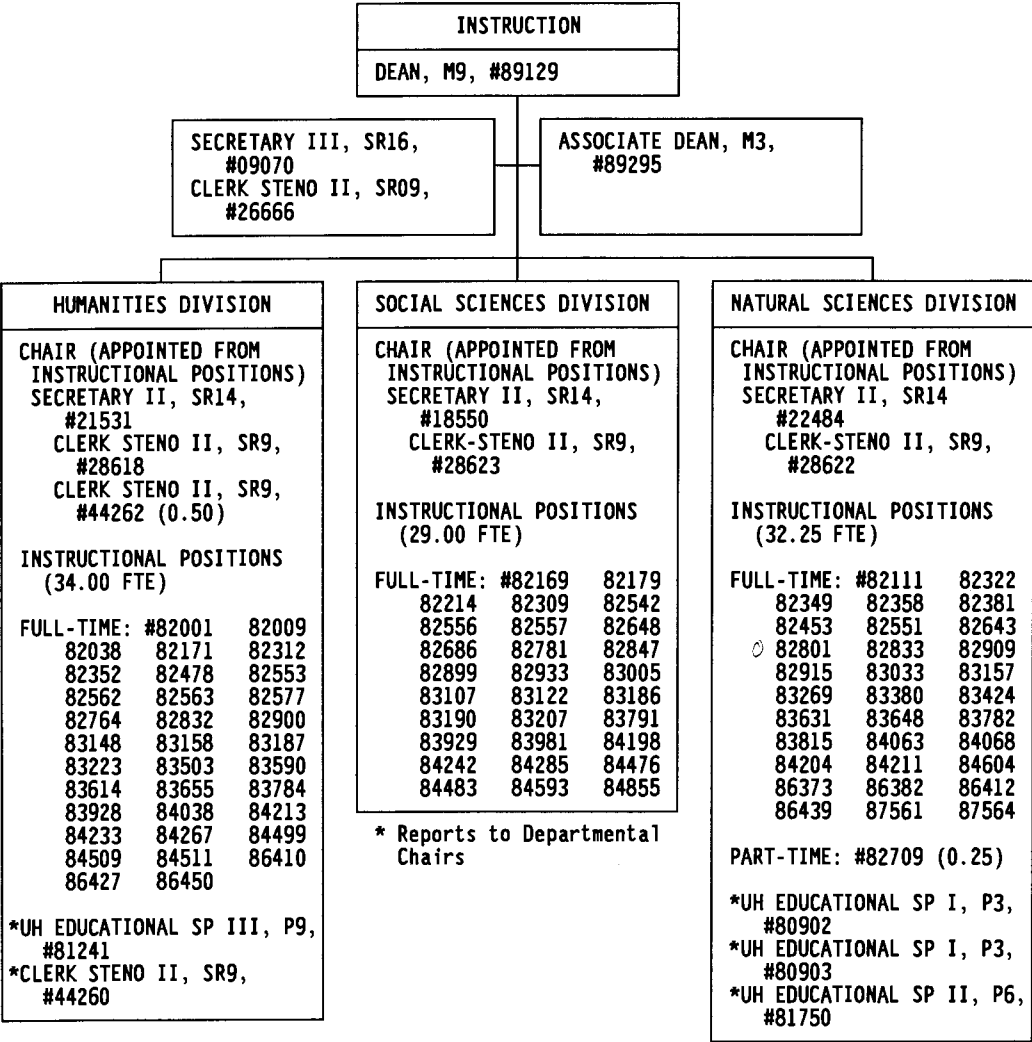
STATE OF HAWAII - UNIVERSITY OF HAWAII  
UNIVERSITY OF HAWAII AT HILO  
INSTRUCTION - COLLEGE OF AGRICULTURE  
POSITION ORGANIZATION CHART - CHART IIID

POSITIONS  
GENERAL FUND - 19.25

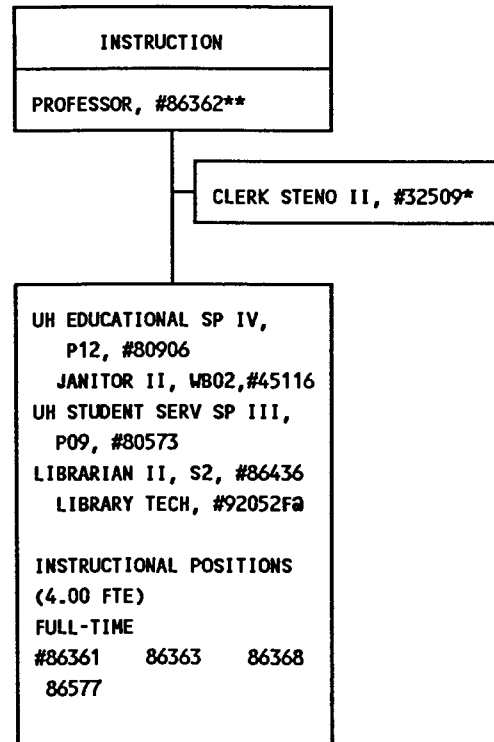
AGRI.DWG

CHART UPDATED

DATE JUN 30 1992



STATE OF HAWAII - UNIVERSITY OF HAWAII  
UNIVERSITY OF HAWAII AT HILO  
INSTRUCTION - UNIVERSITY OF HAWAII AT WEST HAWAII  
POSITION ORGANIZATION CHART-CHART IIIF



APPROVED:

*Edward J. Korman*

TITLE:

Sr. V.P. and Chancellor

DATE:

5/15/92

POSITIONS

GENERAL FUND - 10.00  
SPECIAL FUND - 1.00

\* Special Fund

\*\* Proposed reclassification - Director of UH West Hawaii

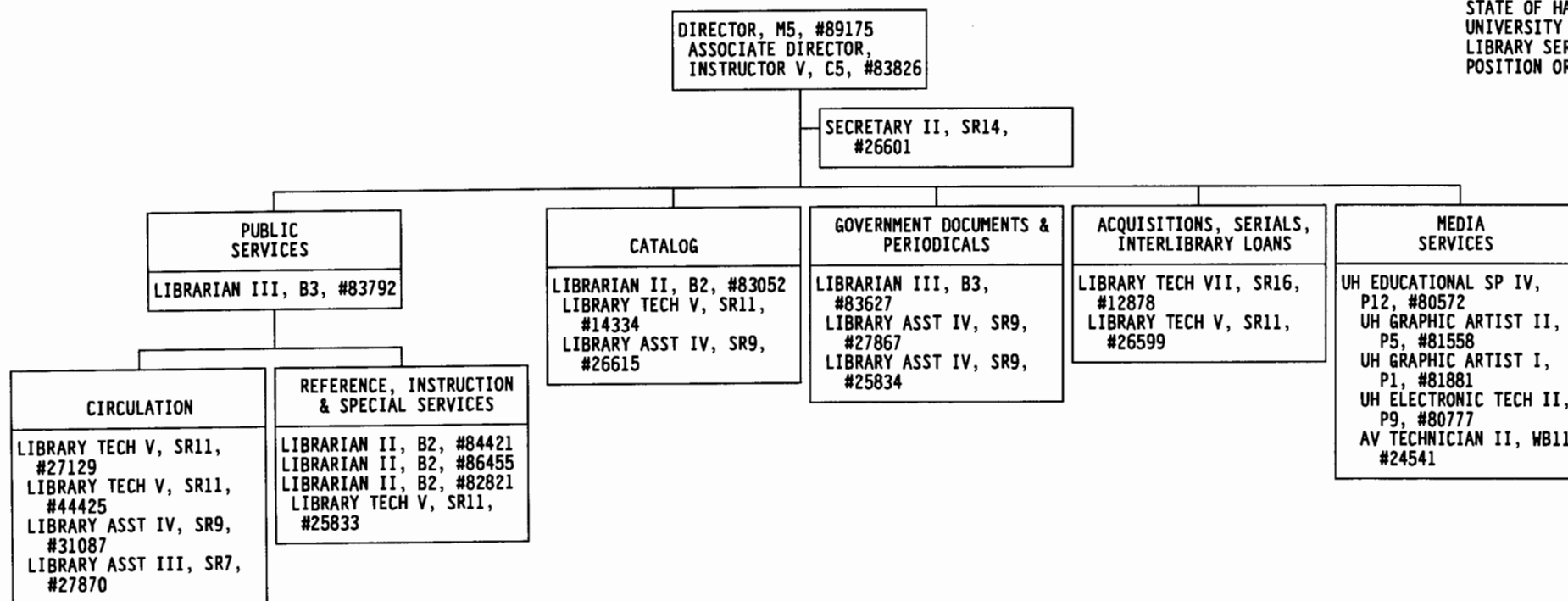
@ Pending establishment

WESTHI.DWG

CHART UPDATED

DATE JUN 30 1992

STATE OF HAWAII - UNIVERSITY OF HAWAII  
UNIVERSITY OF HAWAII AT HILO  
LIBRARY SERVICES  
POSITION ORGANIZATION CHART - CHART IIIG



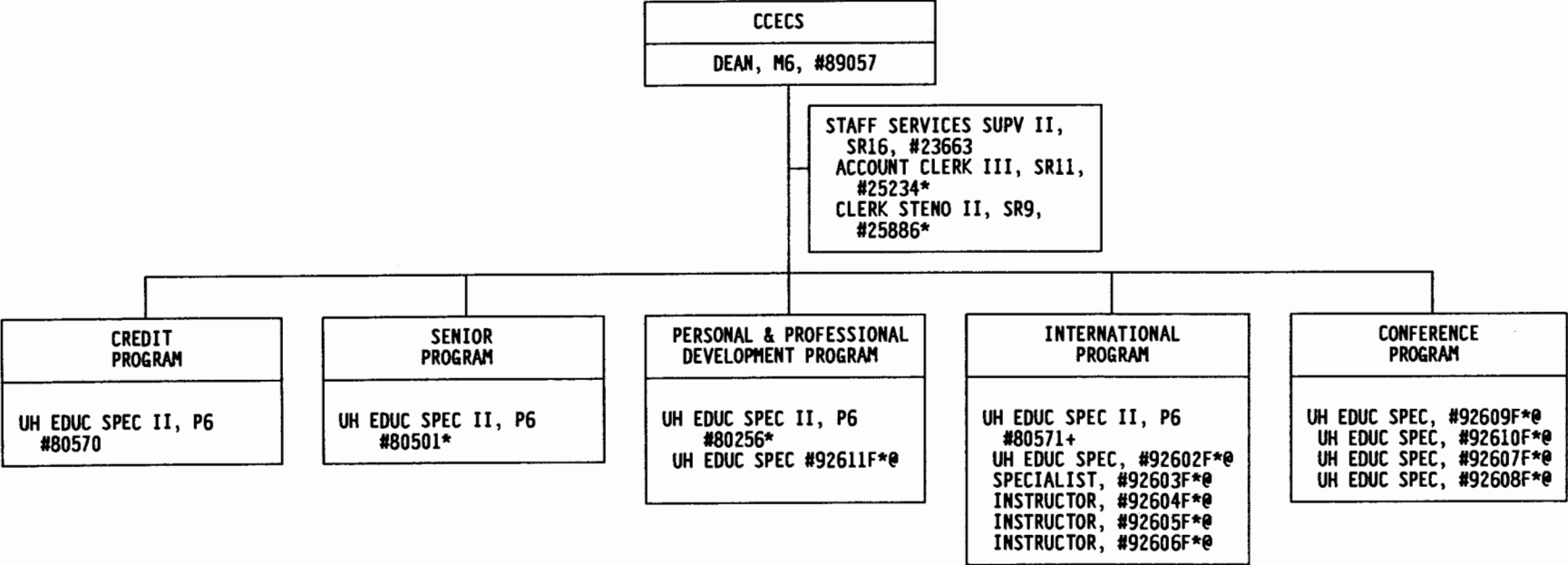
POSITIONS  
GENERAL FUND - 25.00

LIBRARY.DWG

CHART UPDATED  
DATE JUN 30 1992



STATE OF HAWAII - UNIVERSITY OF HAWAII  
UNIVERSITY OF HAWAII AT HILO  
CONTINUING EDUCATION & COMM SERVICE  
POSITION ORGANIZATION CHART - CHART IIIH

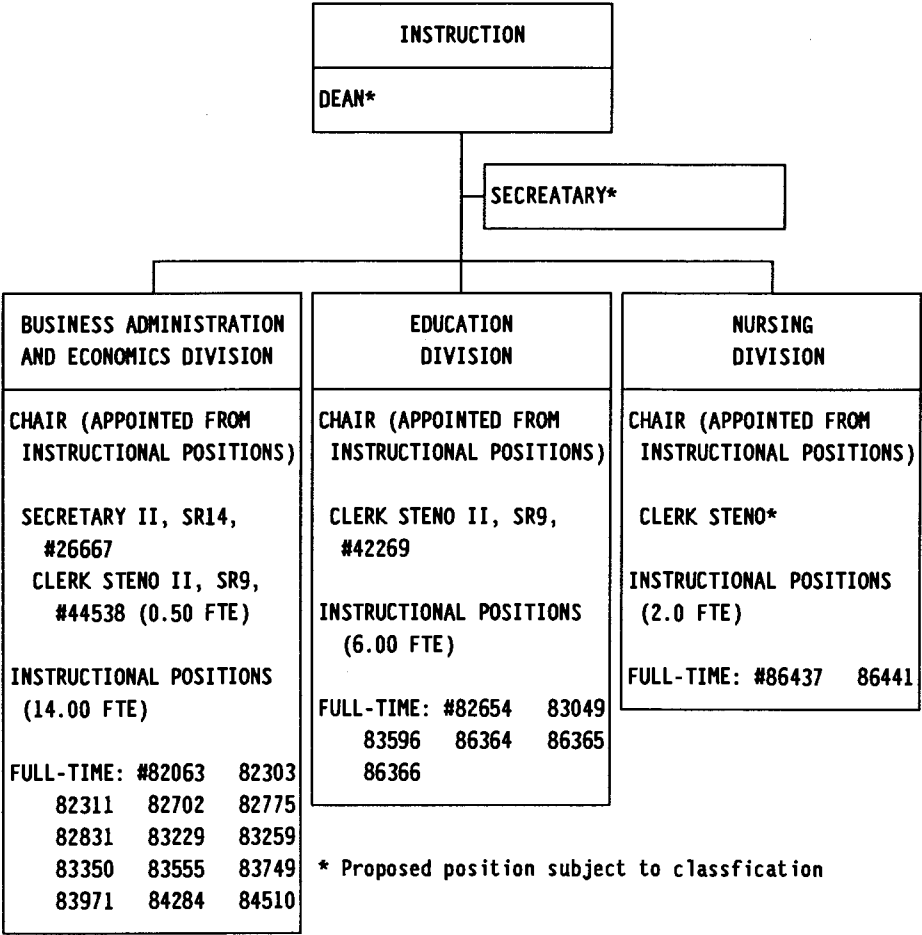


@ PENDING ESTABLISHMENT  
+ PROPOSED RECLASSIFICATION  
TO UH EDUCATIONAL SPEC. IV

POSITIONS  
GENERAL FUND - 4.00  
SPECIAL FUND - 14.00\*

CCECS.DWG

CHART UPDATED  
JUN 30 1992  
DATE



POSITIONS  
GENERAL FUND - 24.50

PROFSTUD.DWG

CHART UPDATED  
DATE JUN 30 1992