

State of Hawaii
University of Hawaii
University of Hawaii at Manoa
Colleges of Arts and Sciences
Chart I

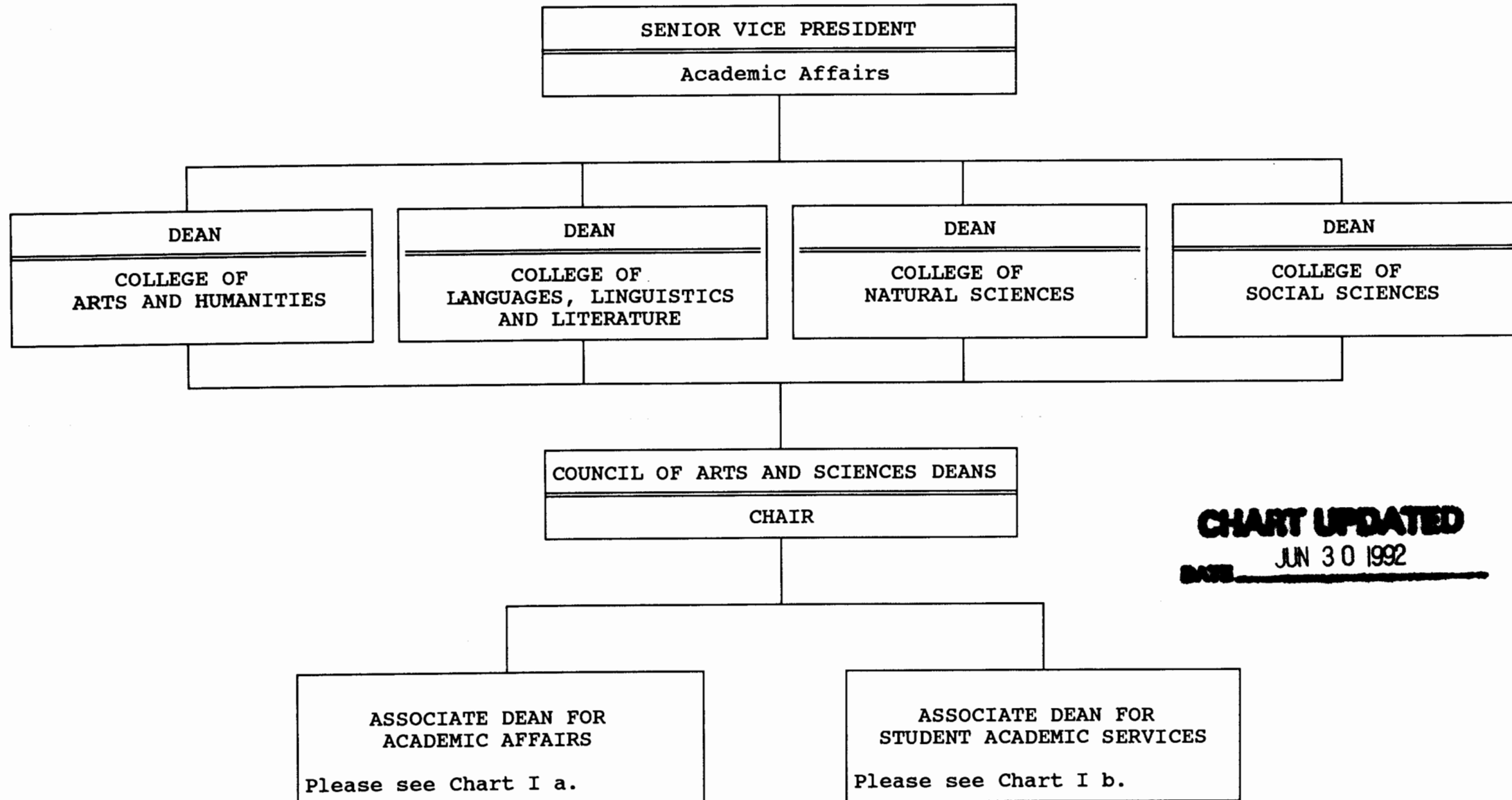


CHART UPDATED
JUN 30 1992
DATE

University of Hawaii at Manoa
Colleges of Arts and Sciences
Chart I a

COUNCIL OF ARTS AND SCIENCES DEANS
CHAIR

ACADEMIC AFFAIRS
Associate Dean for Academic Affairs M08-AM #89010

Secretary III
SR 16 #14364

UH ADMIN OFFICER III
P07, #81335

SPECIAL PROGRAMS

ALL COLLEGES SUPPORT
Computer Specialist II (0.00 FTE)
(Temporary) #81917

Honors Program
Sec II, SR 14, #14426 (1.00)
Instructional Pos. (5.25)
#82506 (0.50) #85247 (0.50)
#82671 (1.00) #87431 (0.50)
#84563 (1.00) #88190 (0.50)
#85010 (0.25) #88372 (0.50)
#83968 (0.50)

Liberal Studies
Secretary I, SR12, (.50) #41019
Instructional Pos. (2.00)
#83044 (0.50)
#86356 (1.00)
#88451 (0.50)

Freshman Seminar
Instructional Pos. (2.25)
#82099 (.25) #85300 (.50)
#82360 (.25) #86126 (.25)
#82903 (.25) #86644 (.25)
#84209 (.25) #86523 (.25)

CHART UPDATED

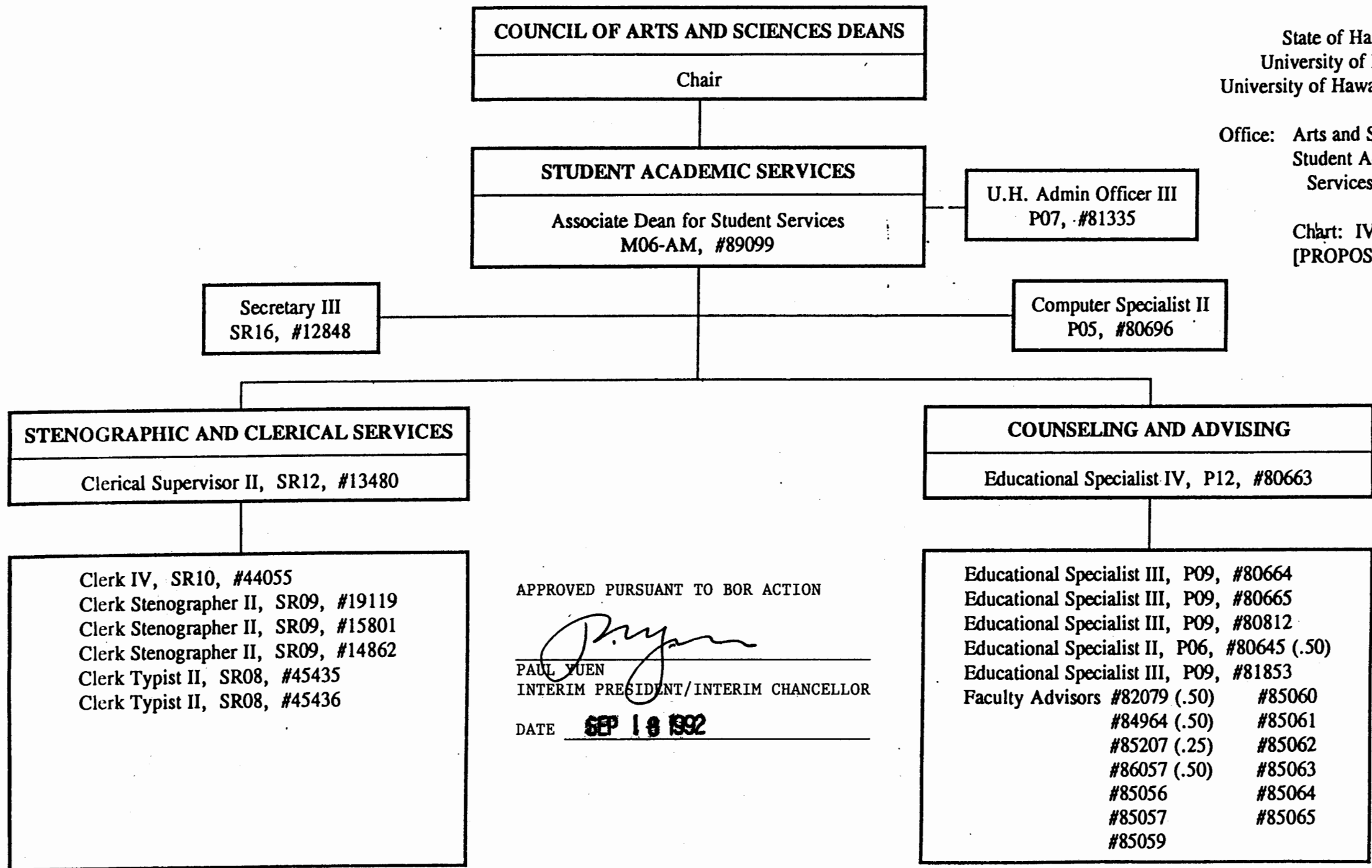
DATE JUN 30 1992

Approved by: Ronald E. Camb
Title: Associate Dean
Date: JUL 7 1992
Chart Update: June 30, 1992

State of Hawai'i
University of Hawai'i
University of Hawai'i at Manoa

Office: Arts and Sciences
Student Academic
Services

Chart: IV-S₂
[PROPOSED]



APPROVED PURSUANT TO BOR ACTION

PAUL YUEN

INTERIM PRESIDENT/INTERIM CHANCELLOR

DATE

SEP 18 1992

SUPERSEDED
Reorg. 9/18/92
OFF. OF STUDENT
AFFAIRS

University of Hawaii at Manoa
Colleges of Arts and Sciences
Chart I b

CHART UPDATED

DATE JUN 30 1992

COUNCIL OF ARTS AND SCIENCES DEANS

CHAIR

STUDENT ACADEMIC SERVICES

Associate Dean for Student Services
M06-AM, #89099

UH ADMIN. OFFICER III
P 07, #81335

Secretary III

SR 16, #12848

Computer Specialist II

P 05, #80696

Stenographic and Clerical Services

Clerical Supervisor II, SR 12, #13480

Counseling and Advising

Educational Spec. IV, P 12, #80663

Kokua Program

Educational Spec. III, P 09, #80666

Clerk IV, SR 10, #44055
Clerk Steno II, SR 09, #19119
Clerk Steno II, SR 09, #15801
Clerk Steno II, SR 09, #14862
Clerk Typist II, SR 08, #45435
Clerk Typist II, SR 08, #45436

Educ. Spec. III, P 09, #80664
Educ. Spec. III, P 09, #80665
Educ. Spec. III, P 09, #80812
Educ. Spec. II, P 06, #80645 (0.50)
Educ. Spec. III, P 09, #81853
Faculty Advisors:
#82079 (0.50) #85056 #85062
#84964 (0.50) #85057 #85063
#85207 (0.25) #85059 #85064
#86057 (0.50) #85060 #85065
#85061

Educational Spec. I, P 03, #80636
Educational Spec. I, P 03, #80608
Educational Spec. II, P 06, #81566
*Clerk IV, SR 10, #90542F
*Educational Spec. I, P 03, #92569F

*To be established

Approved by: Ronald E. Cambra
Title: Associate Dean
Date: July 7, 1992
Chart Update: June 30, 1992