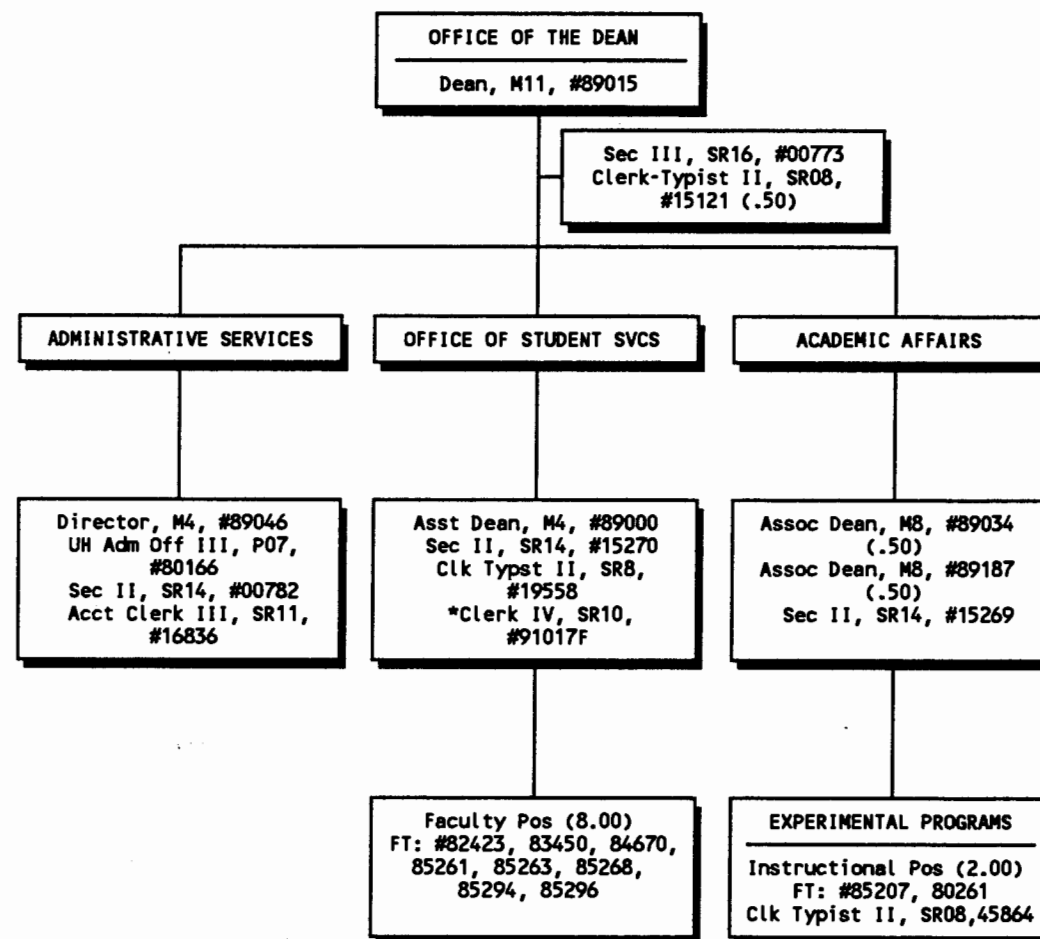


CHART UPDATED
DATE JUN 30 1992



*Pending Establishment

CHART UPDATED

DATE JUN 30 1992

Philip A. T. H. H.
DEAN, COLLEGE OF EDUCATION

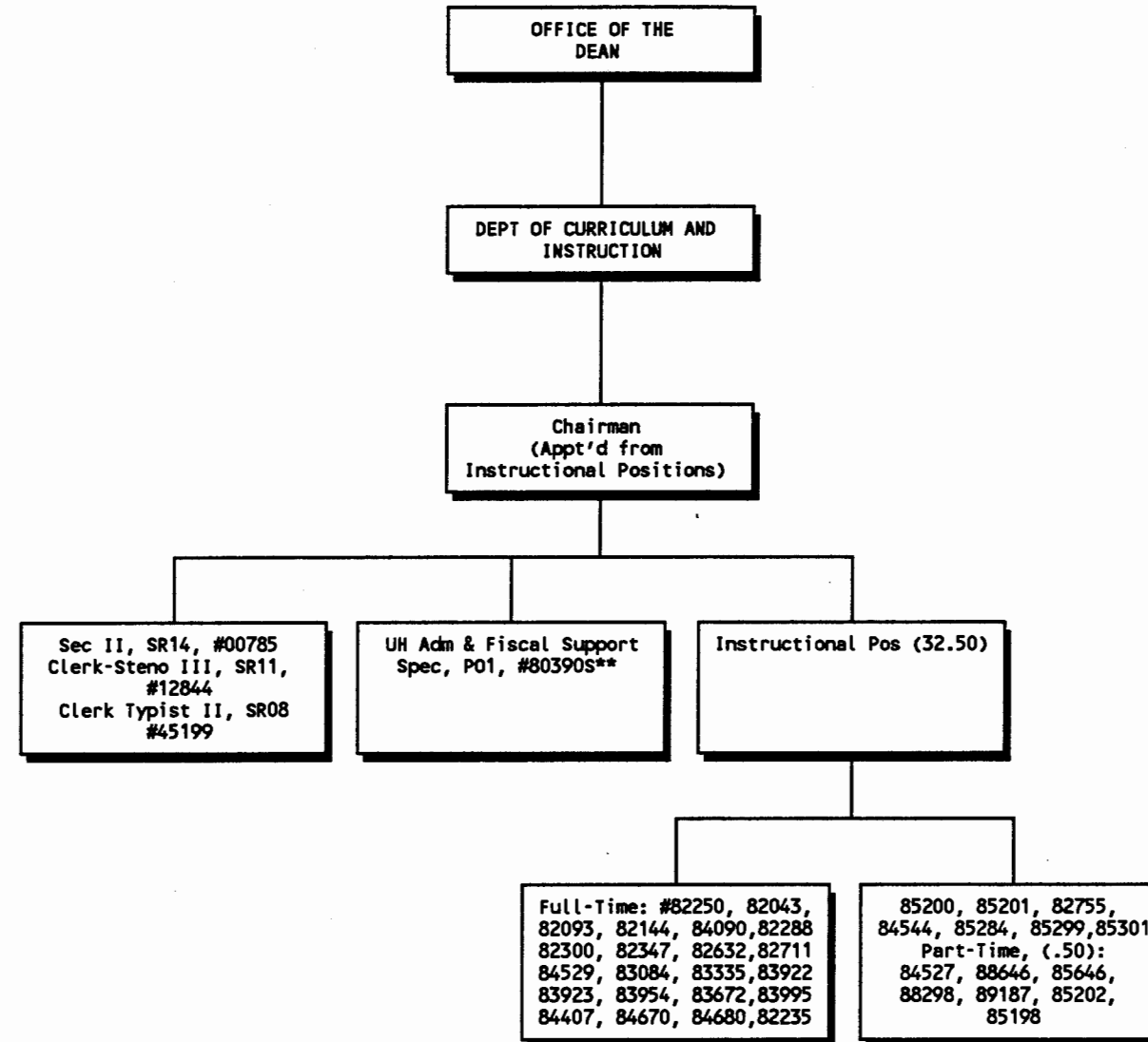


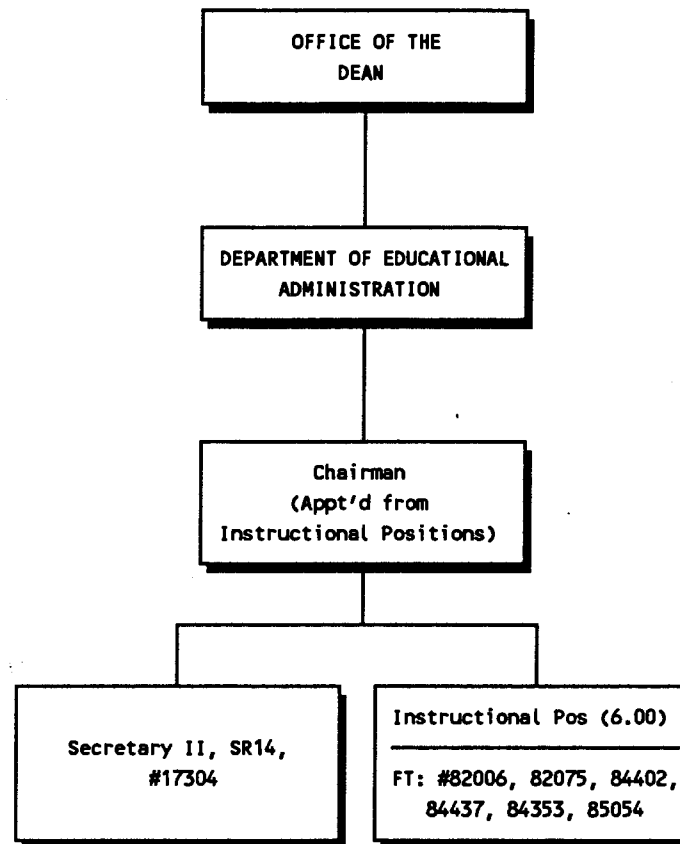
CHART UPDATED

DATE JUN 30 1992

*Pending Establishment
**Temporary position: Center
for Economic Education

Philip A. K. K. K.
DEAN, COLLEGE OF EDUCATION

STATE OF HAWAII/UNIVERSITY OF HAWAII
UNIVERSITY OF HAWAII AT MANOA
COLLEGE OF EDUCATION
POSITION ORGANIZATION CHART - CHART IV




DEAN, COLLEGE OF EDUCATION

CHART UPDATED

DATE JUN 30 1992

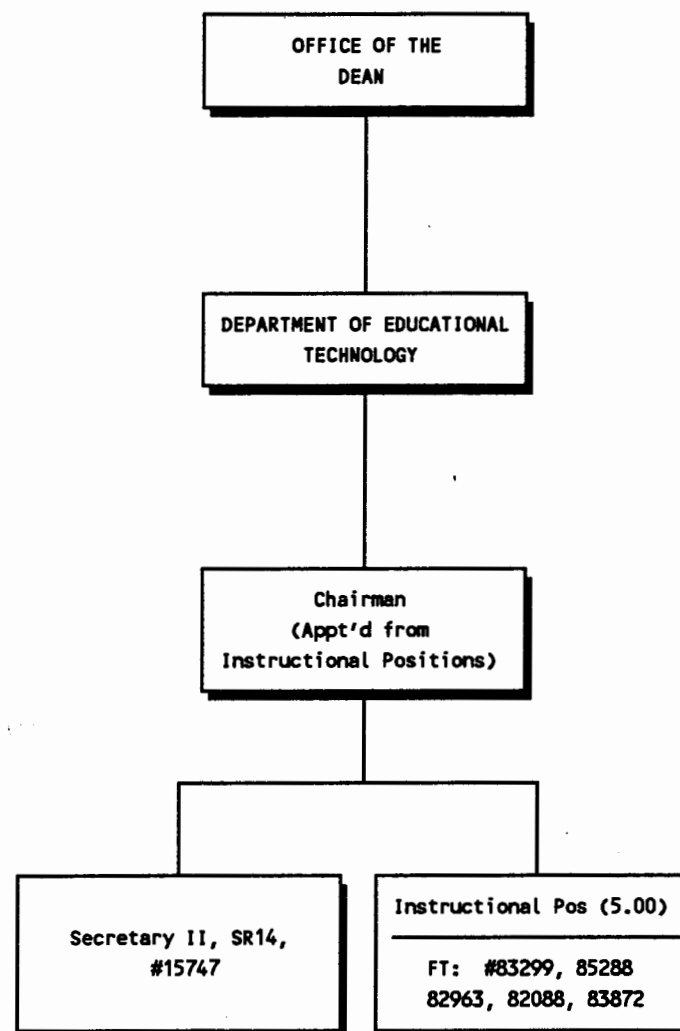
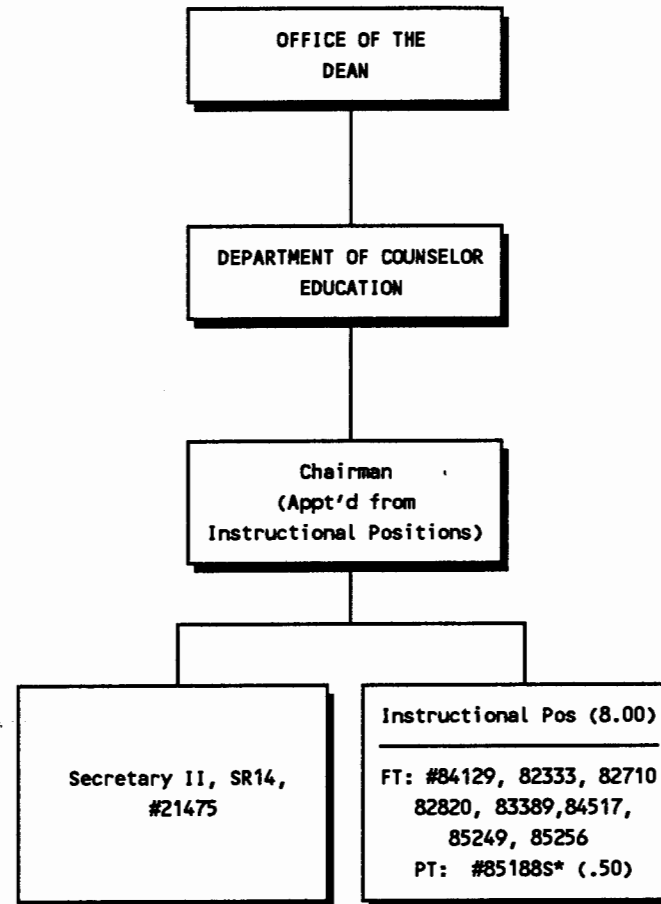


CHART UPDATED
DATE JUN 30 1992

Philip A. White
DEAN, COLLEGE OF EDUCATION



*Temp Grad Asst Position

CHART UPDATED
DATE JUN 30 1992

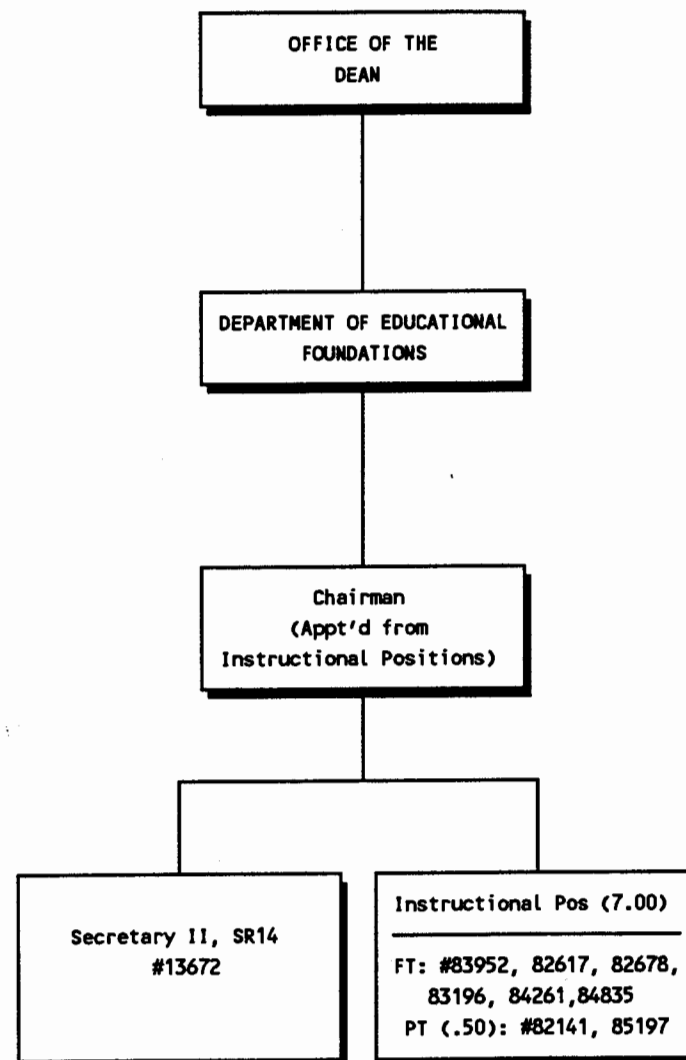


CHART UPDATED

DATE JUN 30 1992

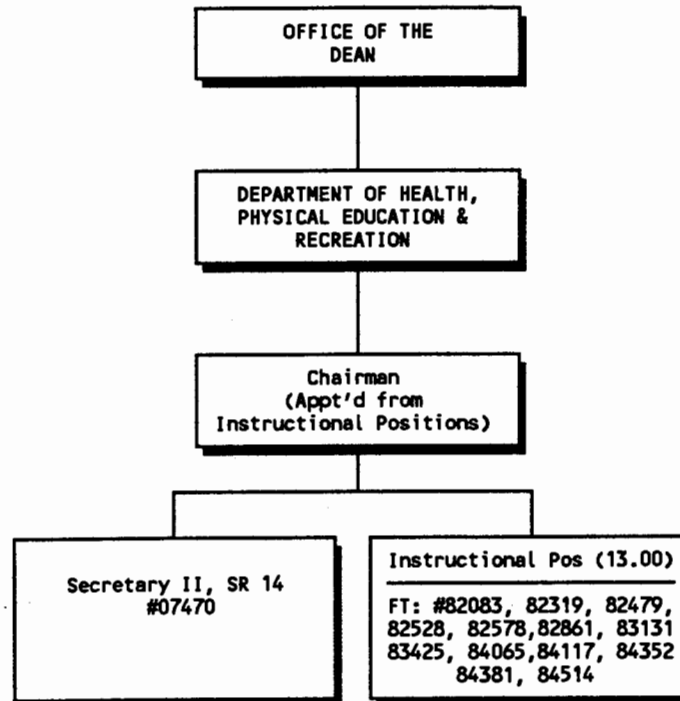


CHART UPDATED
DATE JUN 30 1992

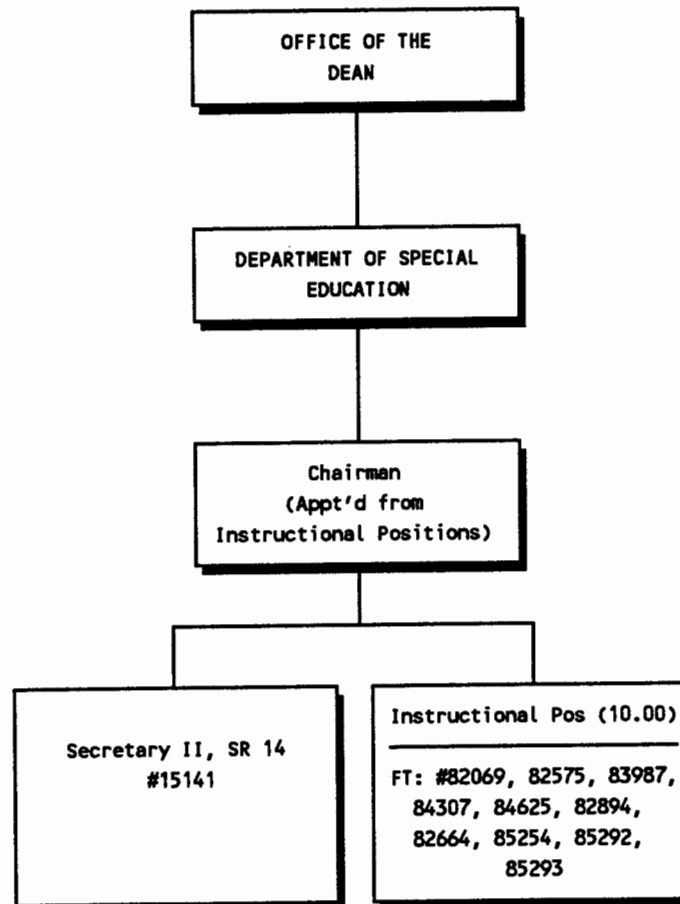


CHART UPDATED

DATE JUN 30 1992


DEAN, COLLEGE OF EDUCATION

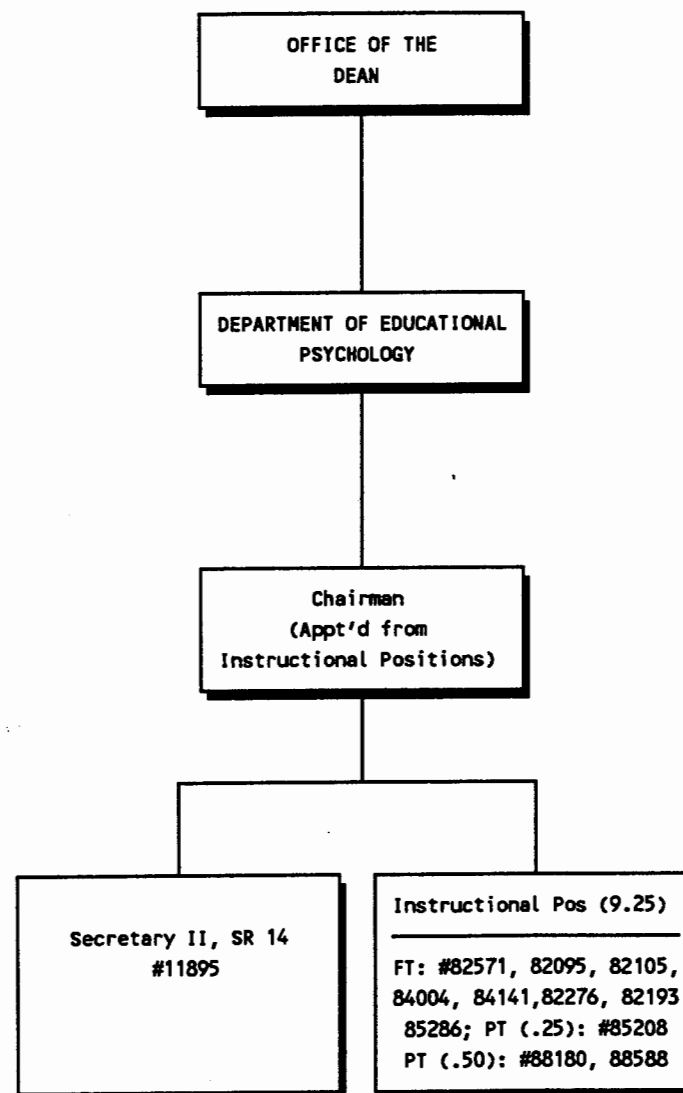



CHART UPDATED

DATE JUN 30 1992


DEAN, COLLEGE OF EDUCATION

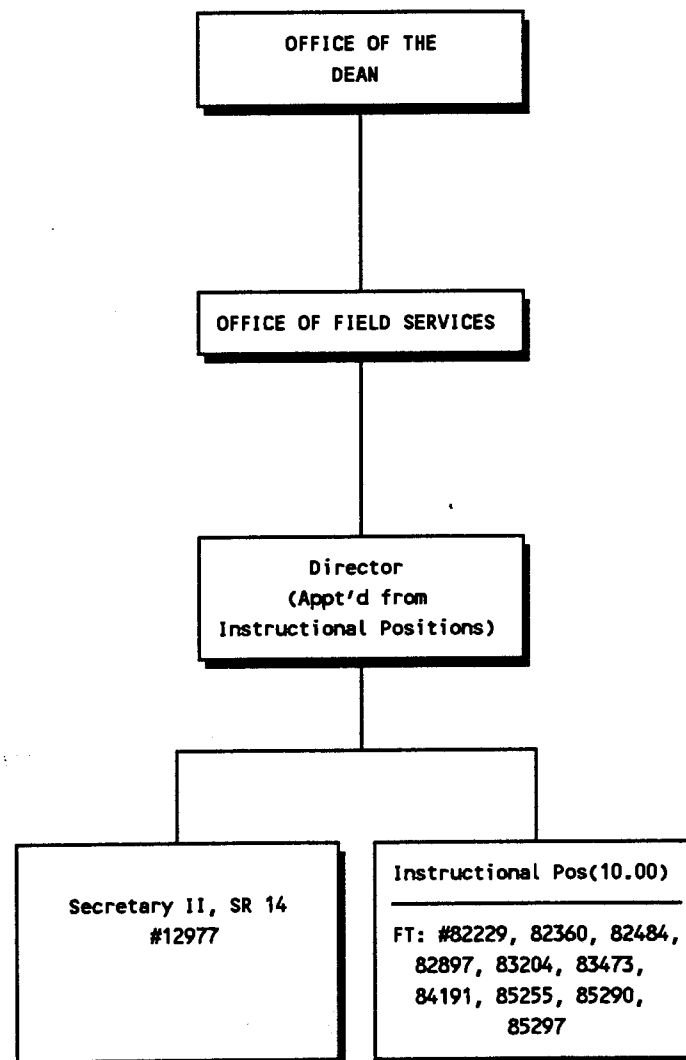


CHART UPDATED
DATE JUN 30 1992

DEAN, COLLEGE OF EDUCATION

STATE OF HAWAII
UNIVERSITY OF HAWAII AT MANOA
COLLEGE OF EDUCATION
CURRICULUM RESEARCH &
DEVELOPMENT GROUP

Position Organization Chart

Chart XII

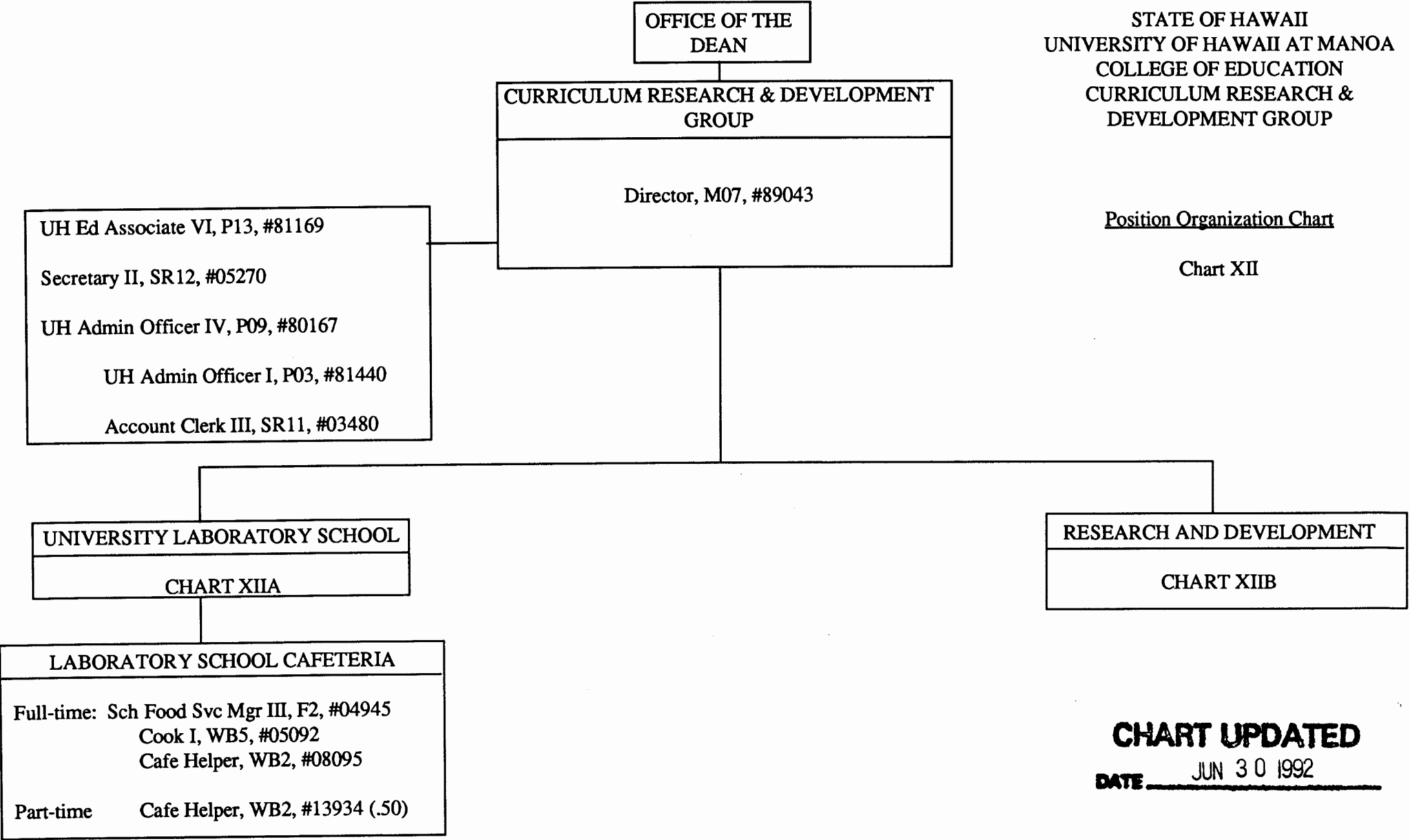


CHART UPDATED

DATE JUN 30 1992

OFFICE OF THE
DEAN

CURRICULUM RESEARCH &
DEVELOPMENT GROUP

Director

STATE OF HAWAII
UNIVERSITY OF HAWAII AT MANOA
COLLEGE OF EDUCATION
CURRICULUM RESEARCH &
DEVELOPMENT GROUP

Position Organization Chart

CHART XIIA

UNIVERSITY LABORATORY SCHOOL

Admintr-Univ Lab Sch, M05, #89257 (.90)

Secretary II, SR12, #00783 (1.00)

Clerk-Typist II, SR08, #36690 (1.00)

Instructional Positions (1.00)

Part-time: #82154 (.20), #83227 (.05), #84608 (.10), #82160 (.15), #82793 (.20), #84377 (.30)

Administrative, Professional, Technical Positions (13.85)

Full-time: UH Ed Assoc V, P11, #80480

UH Ed Assoc IV, P09, #81170

Part-time: UH Ed Assoc VI, P13, #80435 (.15), #80470 (.20)

UH Ed Assoc V, P11, #80418 (.40), #80466 (.20), #80468 (.15), #80474 (.40), #80917 (.15)

UH Ed Assoc IV, P09, #80433 (.85), #80434 (.75), #80484 (.90), #80472 (.50), #80482 (.40), #80491 (.35)

UH Ed Assoc III, P07, #80483 (.30)

UH Ed Assoc II, P05, #80849 (.80), #80465 (.80), #80481 (.90), #80494 (.90), #80485 (.90), #80993 (.80), #81811 (.25)

UH Ed Assoc I, P03, #80464 (.80)

CHART UPDATED

DATE JUN 30 1992

OFFICE OF THE
DEAN

CURRICULUM RESEARCH &
DEVELOPMENT GROUP

Director

STATE OF HAWAII
UNIVERSITY OF HAWAII AT MANOA
COLLEGE OF EDUCATION
CURRICULUM RESEARCH &
DEVELOPMENT GROUP

Position Organization Chart

CHART XIIB

RESEARCH AND DEVELOPMENT

Instructional Positions (12.50)

Full-time: #84031, #83951, #82272, #83380, #82387, #84077, #82950

Part-time: #82141M (.50), #82154 (.80), #83227 (.95), #84608 (.90), #82793 (.80), #84377 (.70), #82160 (.85)

Admintr-Univ Lab Sch, M05, #89257 (.10)

Administrative, Professional, Technical Positions (16.15)

Full-time: UH Ed Assoc VI, P13, #80486, #80495, #80443
UH Ed Assoc V, P11, #80440
UH Ed Assoc IV, P09, #80228, #80420
UH Ed Assoc III, P07, #80476

Part-time: UH Ed Assoc IV, P13, #80470 (.80), #80435 (.85)
UH Ed Assoc V, P11, #80418 (.60), #80468 (.85), #80466 (.80), #80474 (.60), #80917 (.85)
UH Ed Assoc IV, P09, #80484 (.10), #80491 (.65), #80472 (.50), #80433 (.15), #80482 (.60)
UH Ed Assoc III, P07, #80483 (.70)
UH Ed Assoc II, P05, #80465 (.20), #80849 (.20), #80481 (.10), #80485 (.10), #80993 (.20), #80494 (.10)
UH Ed Assoc I, P03, #80464 (.20)

Clerk-Typist III, SR10, #35206 (1.00)

CHART UPDATED

DATE JUN 30 1992