

STATE OF HAWAII
UNIVERSITY OF HAWAII
UNIVERSITY OF HAWAII AT MANOA
SCHOOL OF OCEAN AND EARTH
SCIENCE AND TECHNOLOGY

ORGANIZATION CHART
CHART XXXI

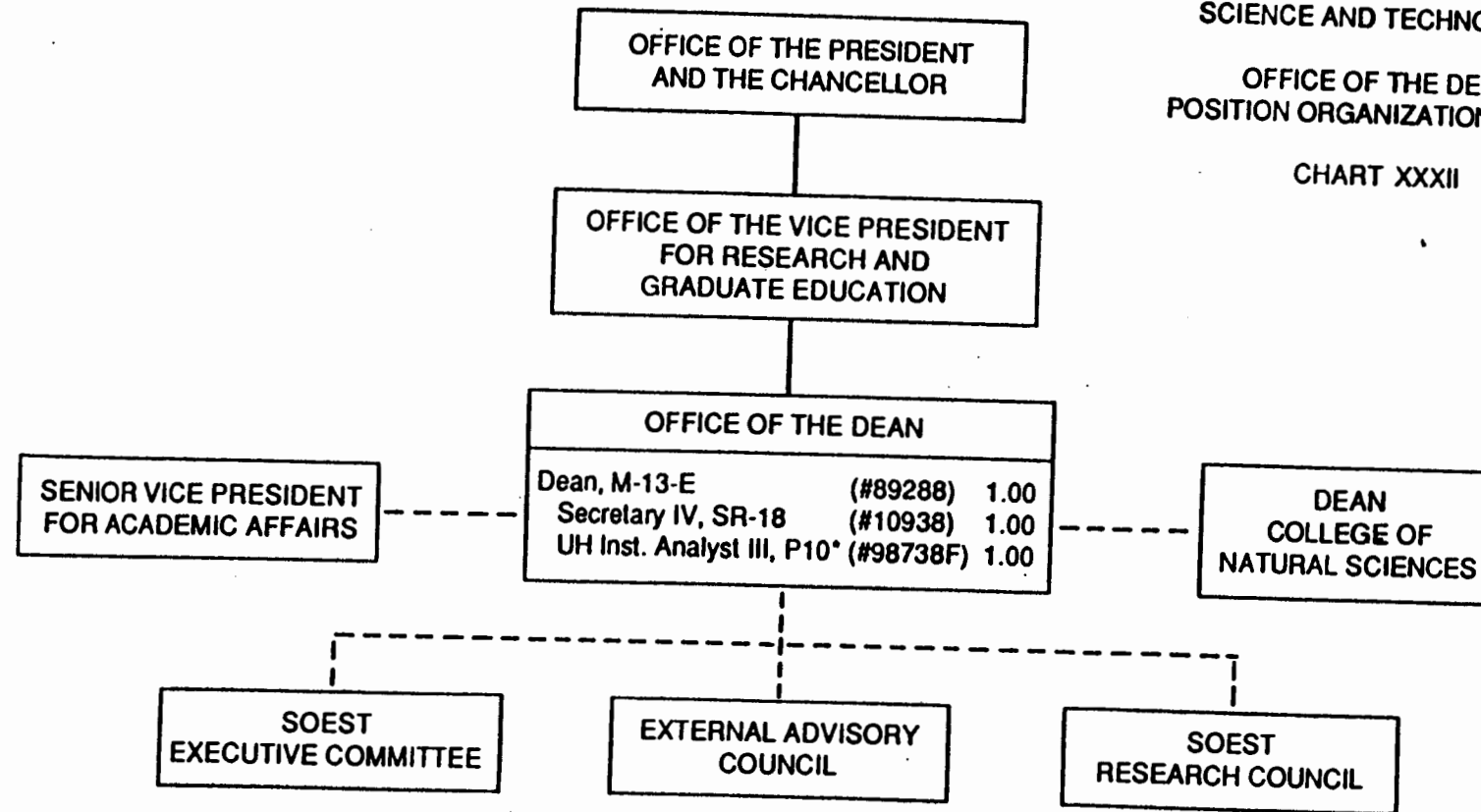
CHART UPDATED

DATE JUN 30 1992

STATE OF HAWAII
UNIVERSITY OF HAWAII
UNIVERSITY OF HAWAI AT MANOA
SCHOOL OF OCEAN AND EARTH
SCIENCE AND TECHNOLOGY

OFFICE OF THE DEAN
POSITION ORGANIZATION CHART

CHART XXXII



* To be established/reclassified to the position of Assistant to the Dean

CHART UPDATED
DATE JUN 30 1992

STATE OF HAWAII
UNIVERSITY OF HAWAII
UNIVERSITY OF HAWAII AT MANOA
SCHOOL OF OCEAN AND EARTH
SCIENCE AND TECHNOLOGY

OFFICE OF THE ASSOCIATE DEAN
FOR ACADEMIC AFFAIRS
POSITION ORGANIZATION CHART

CHART XXXIII

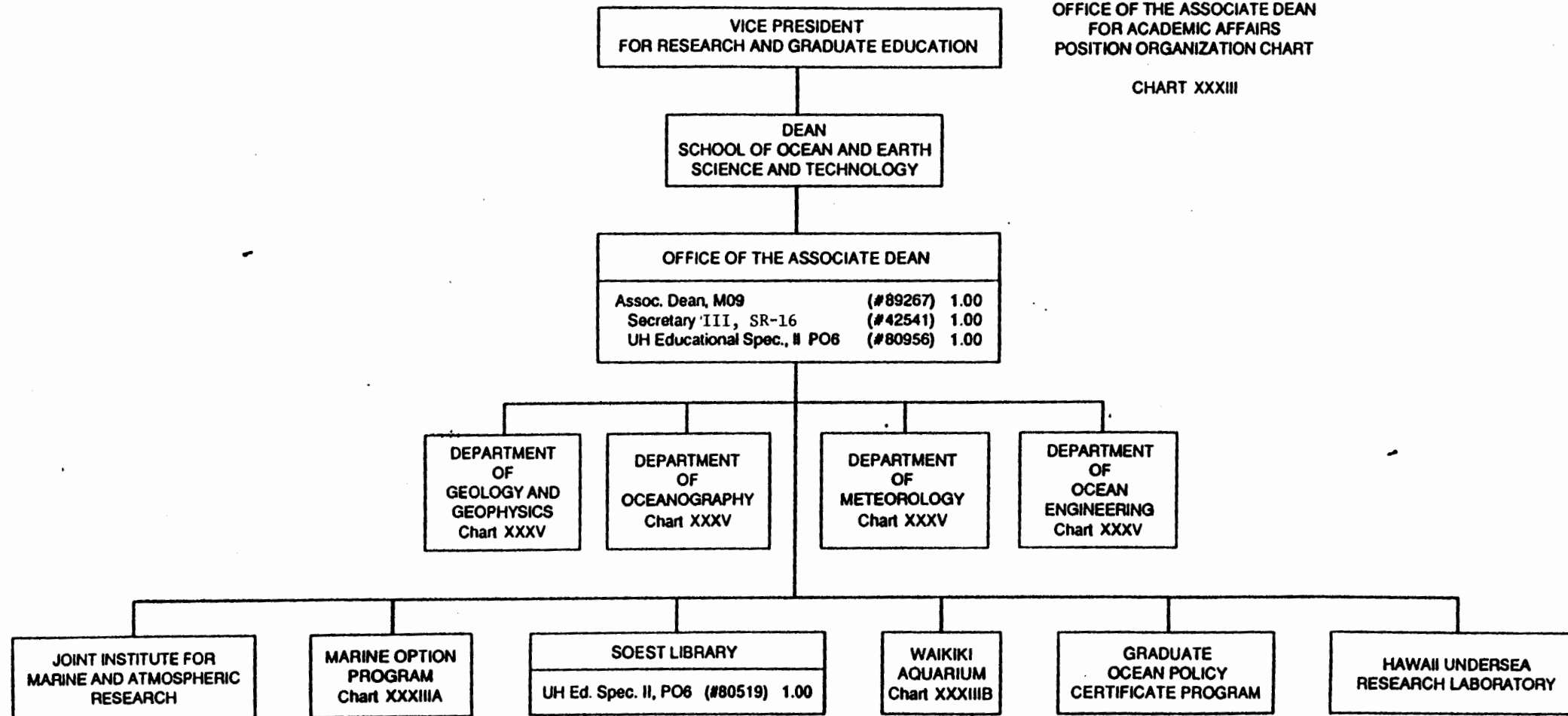
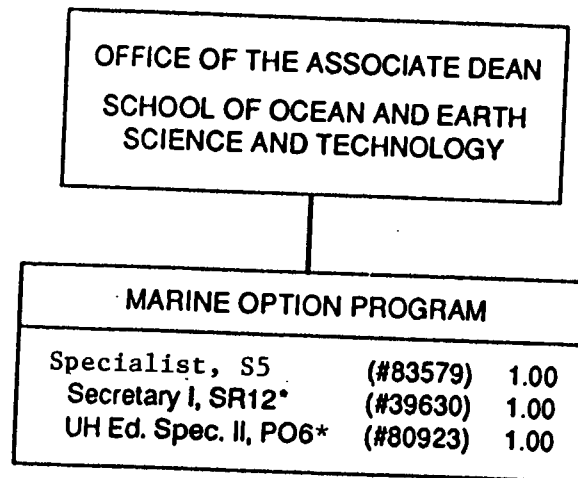


CHART UPDATED
DATE JUN 30 1992

STATE OF HAWAII
UNIVERSITY OF HAWAII
UNIVERSITY OF HAWAII AT MANOA
SCHOOL OF OCEAN AND EARTH
SCIENCE AND TECHNOLOGY

MARINE OPTION PROGRAM
POSITION ORGANIZATION CHART

CHART XXXIIIA



• To be reclassified

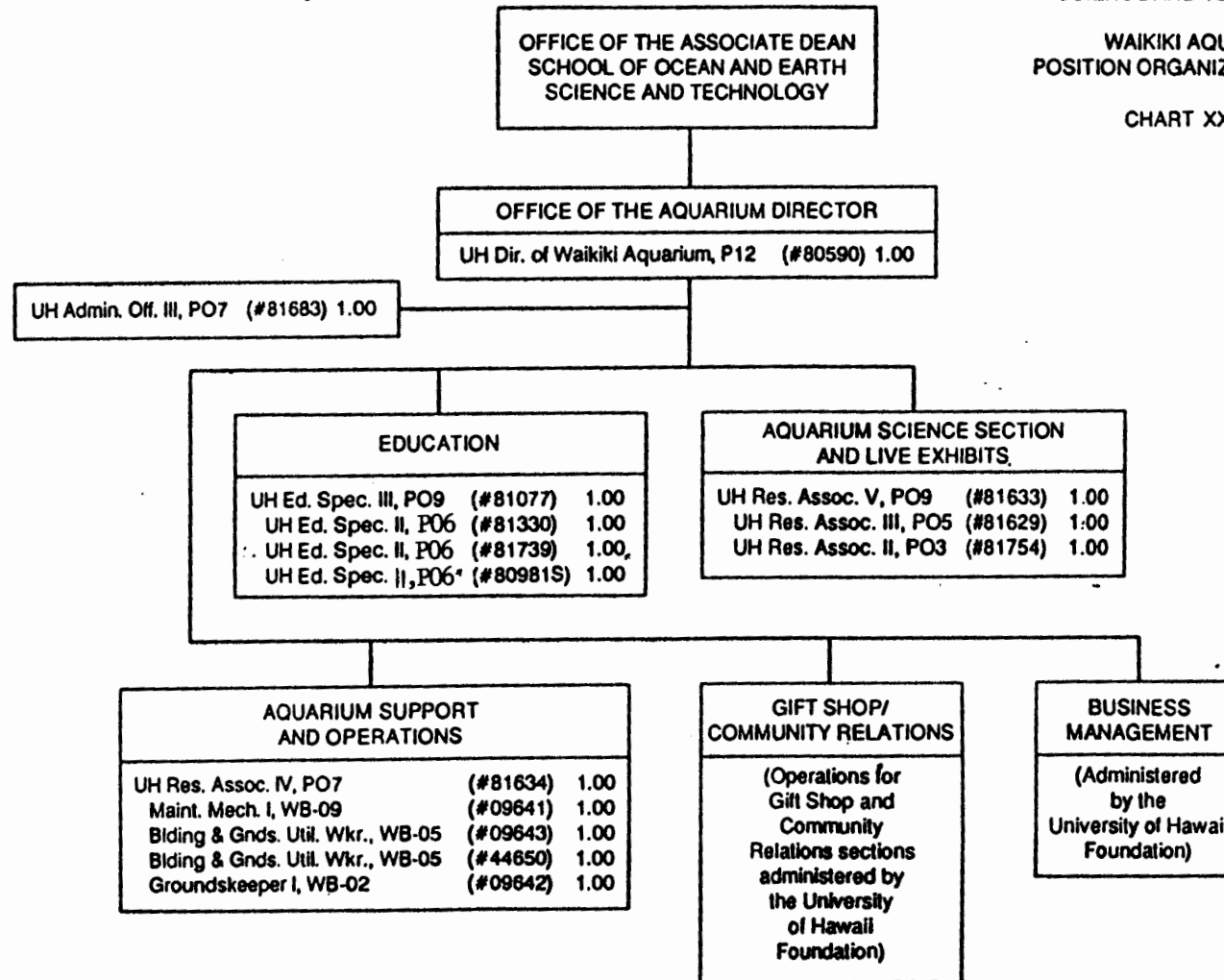
CHART UPDATED

DATE JUN 30 1992

STATE OF HAWAII
UNIVERSITY OF HAWAII
UNIVERSITY OF HAWAII AT MANOA
SCHOOL OF OCEAN AND EARTH
SCIENCE AND TECHNOLOGY

WAIKIKI AQUARIUM
POSITION ORGANIZATION CHART

CHART XXXIIIB



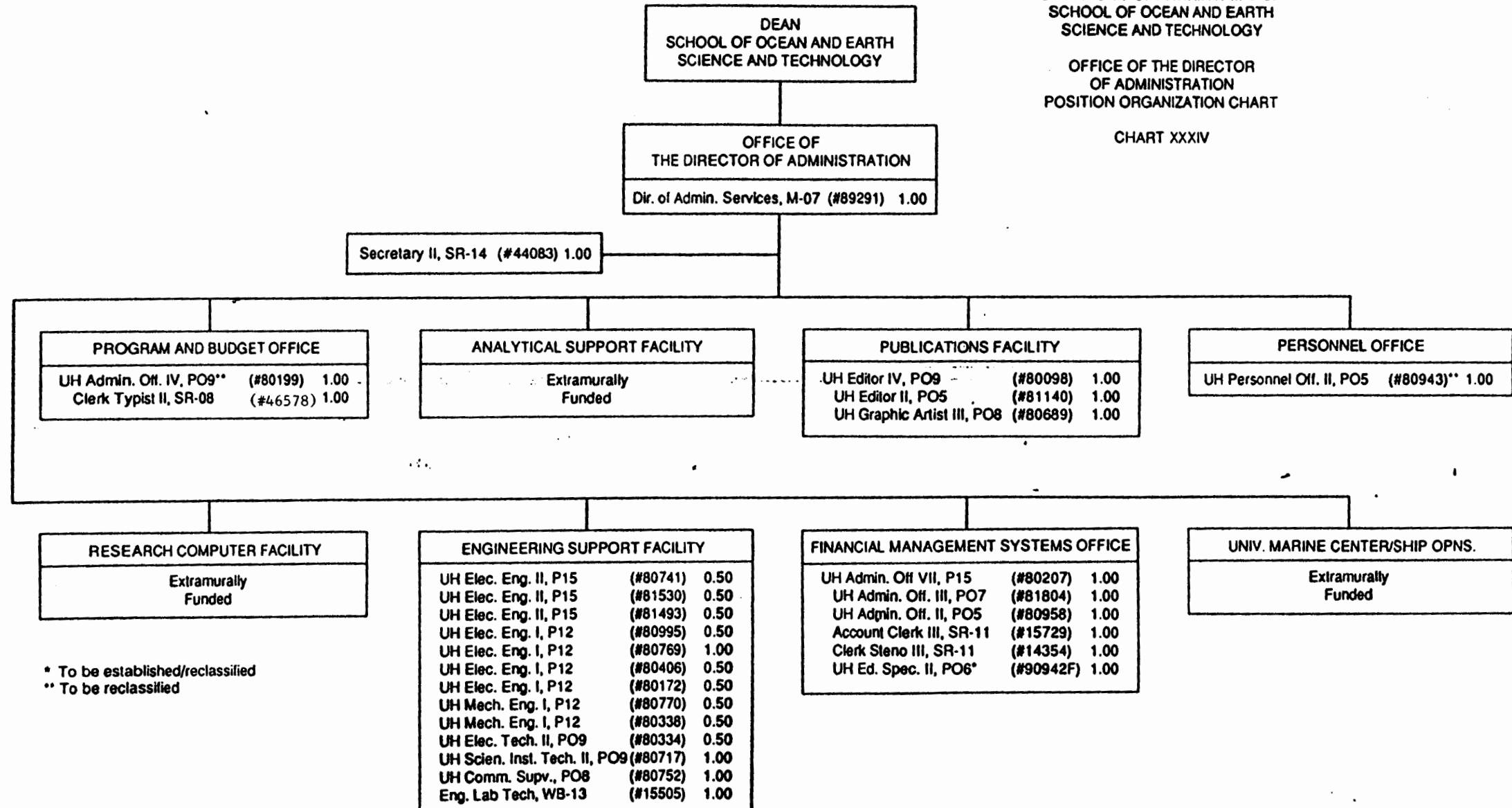
* Temporary

CHART UPDATED
DATE JUN 30 1992

STATE OF HAWAII
UNIVERSITY OF HAWAII
UNIVERSITY OF HAWAII AT MANOA
SCHOOL OF OCEAN AND EARTH
SCIENCE AND TECHNOLOGY

OFFICE OF THE DIRECTOR
OF ADMINISTRATION
POSITION ORGANIZATION CHART

CHART XXXIV



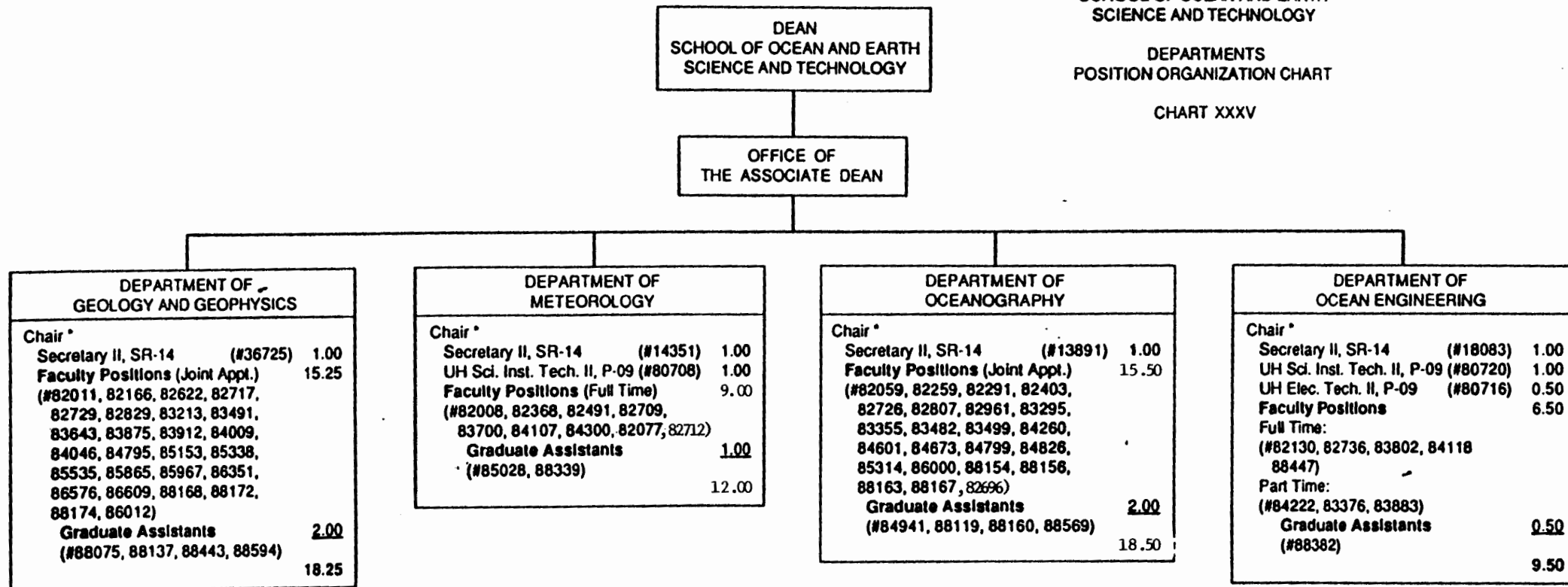
* To be established/reclassified
** To be reclassified

CHART UPDATED
DATE JUN 30 1992

STATE OF HAWAII
UNIVERSITY OF HAWAII
UNIVERSITY OF HAWAII AT MANOA
SCHOOL OF OCEAN AND EARTH
SCIENCE AND TECHNOLOGY

DEPARTMENTS
POSITION ORGANIZATION CHART

CHART XXXV



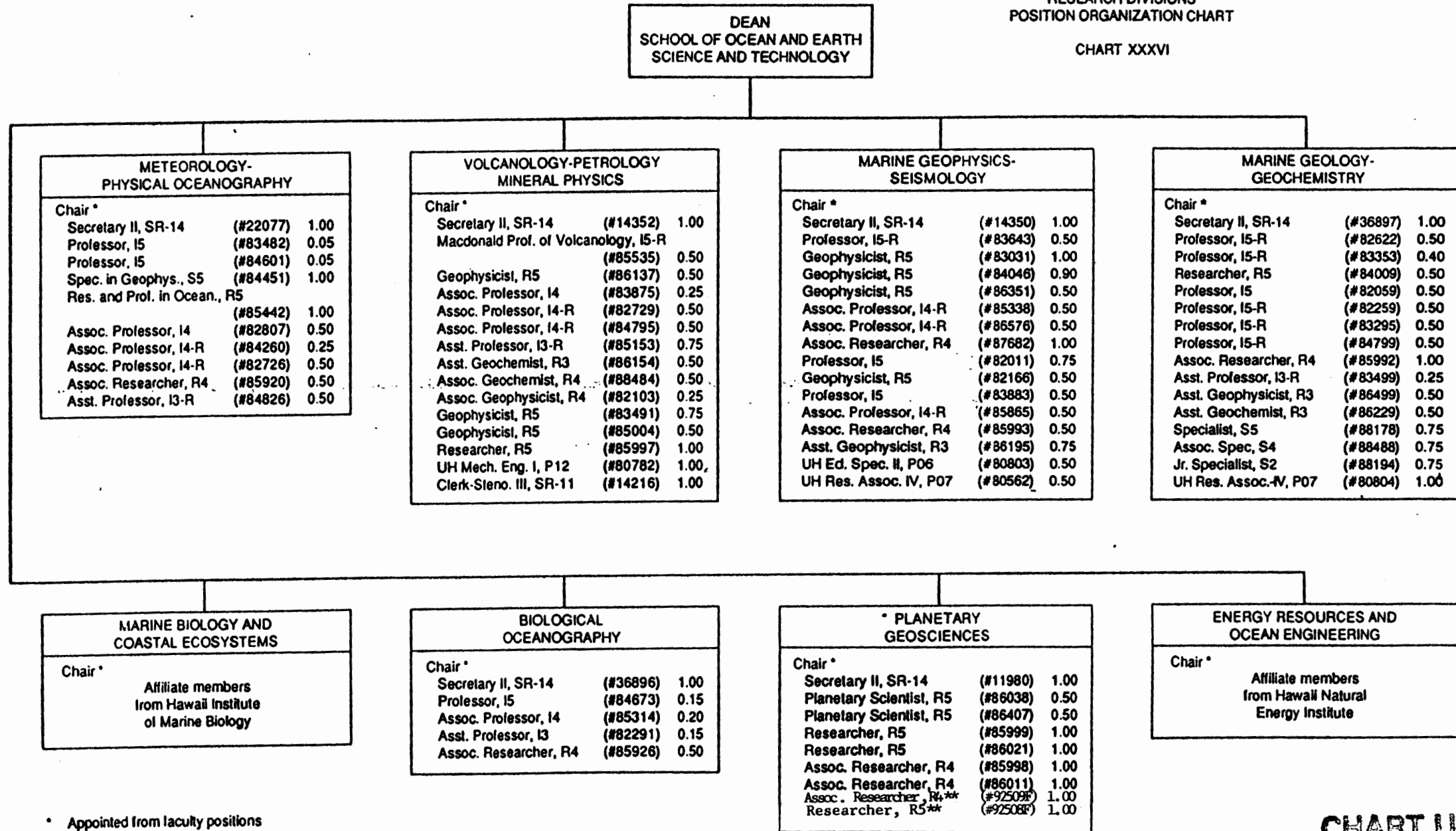
* Appointed from faculty positions

CHART UPDATED
DATE JUN 30 1992

STATE OF HAWAII
UNIVERSITY OF HAWAII
UNIVERSITY OF HAWAII AT MANOA
SCHOOL OF OCEAN AND EARTH
SCIENCE AND TECHNOLOGY

RESEARCH DIVISIONS
POSITION ORGANIZATION CHART

CHART XXXVI



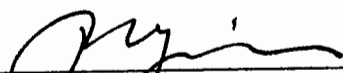
* Appointed from faculty positions

** To be established

CHART UPDATED

DATE JUN 30 1992

APPROVED:

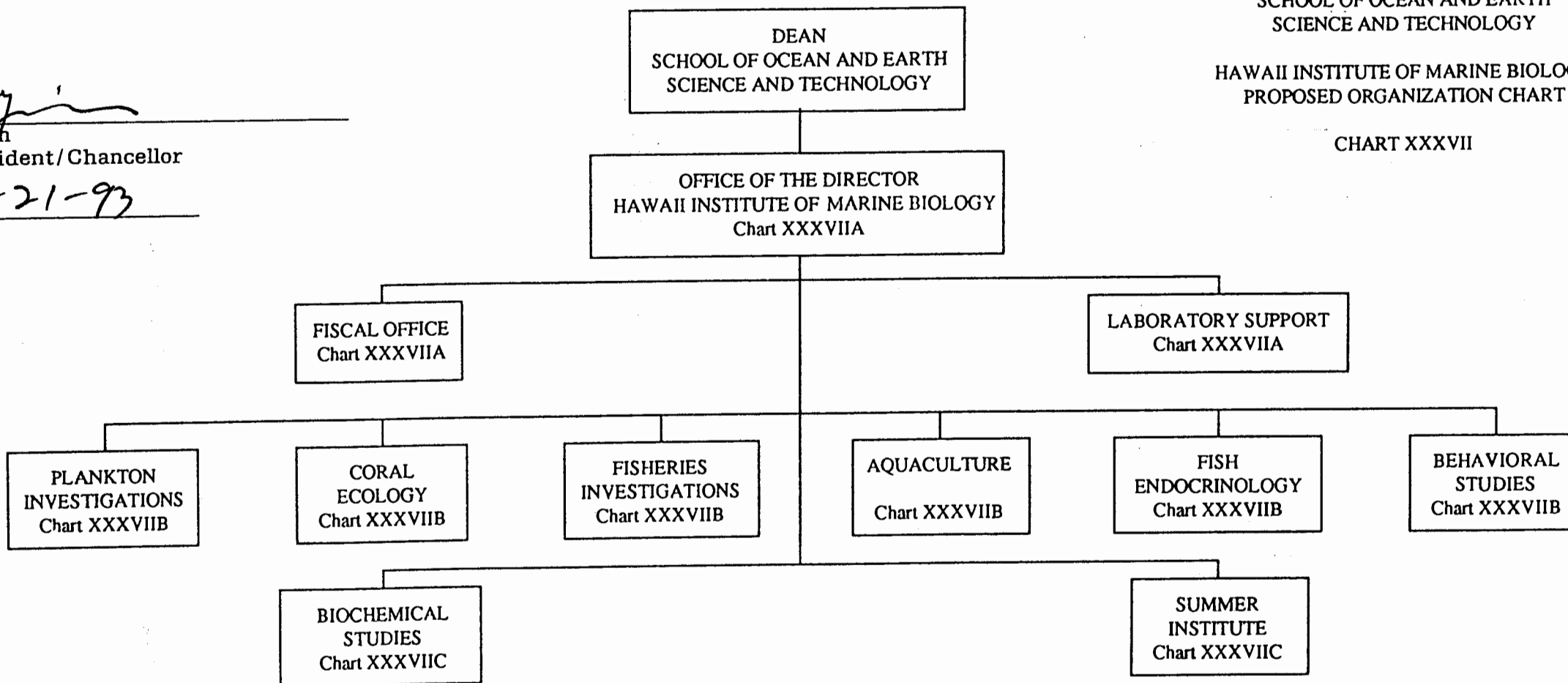

Paul C. Yuen
Interim President/Chancellor

Date: 1-21-93

STATE OF HAWAII
UNIVERSITY OF HAWAII
UNIVERSITY OF HAWAII AT MANOA
SCHOOL OF OCEAN AND EARTH
SCIENCE AND TECHNOLOGY

HAWAII INSTITUTE OF MARINE BIOLOGY
PROPOSED ORGANIZATION CHART

CHART XXXVII



SUPERSEDED REORG.
1/21/93

STATE OF HAWAII
UNIVERSITY OF HAWAII
UNIVERSITY OF HAWAII AT MANOA
SCHOOL OF OCEAN AND EARTH
SCIENCE AND TECHNOLOGY

HAWAII INSTITUTE OF MARINE BIOLOGY
ORGANIZATION CHART

CHART XXXVII

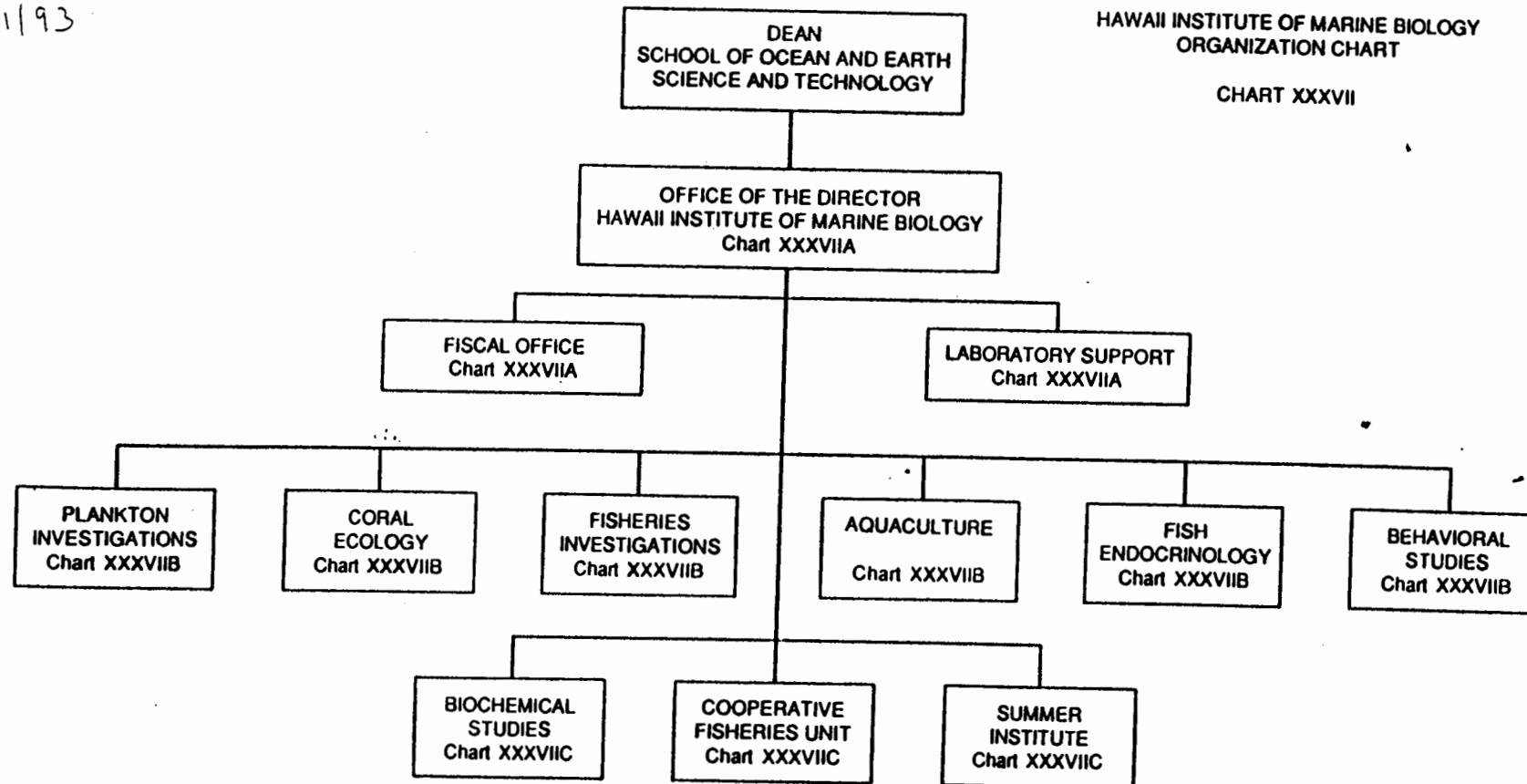


CHART UPDATED

DATE JUN 30 1992

STATE OF HAWAII
UNIVERSITY OF HAWAII
UNIVERSITY OF HAWAII AT MANOA
SCHOOL OF OCEAN AND EARTH
SCIENCE AND TECHNOLOGY

HAWAII INSTITUTE OF MARINE BIOLOGY
POSITION ORGANIZATION CHART

CHART XXXVIIA

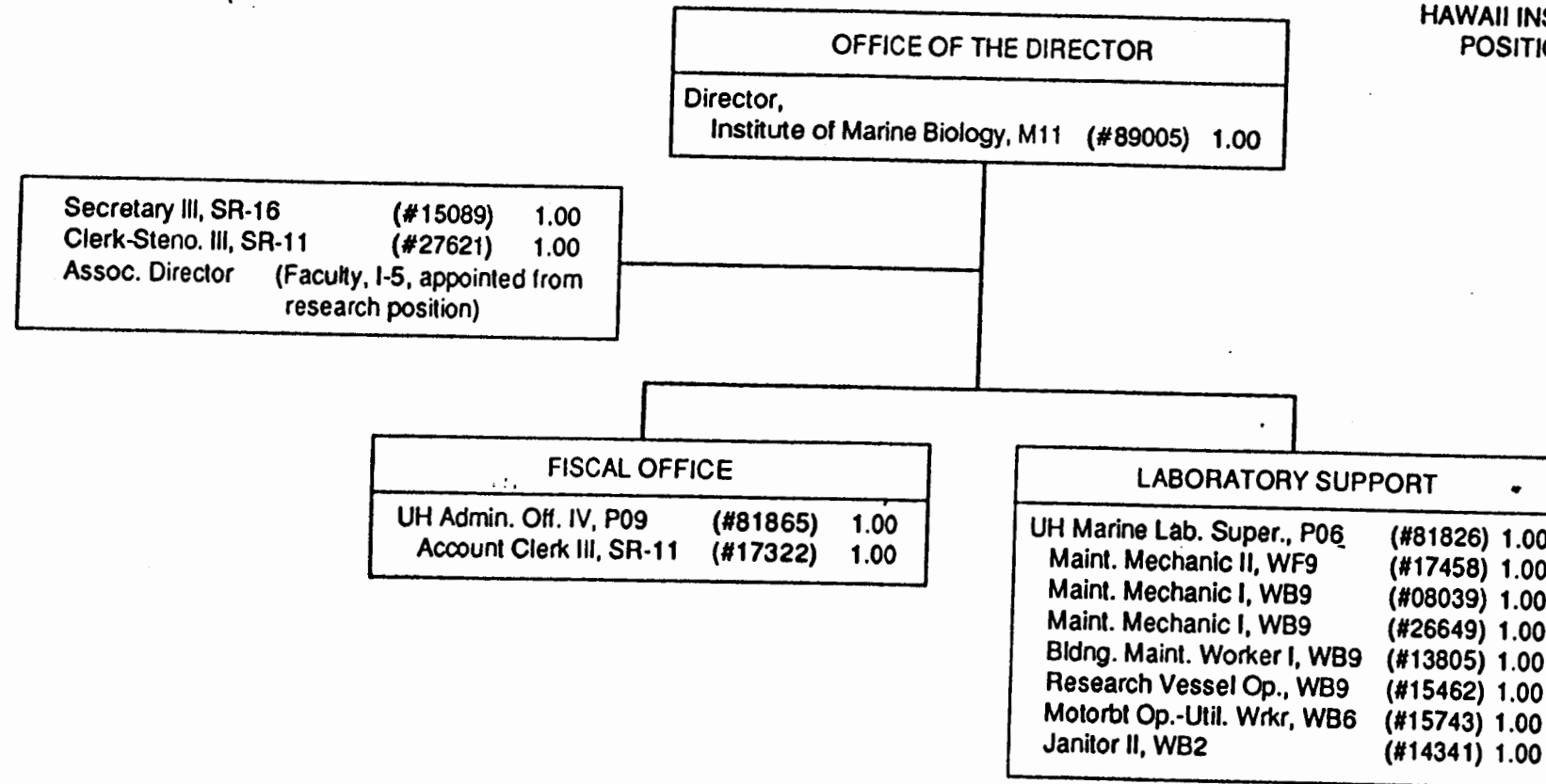


CHART UPDATED

DATE JUN 30 1992

STATE OF HAWAII
UNIVERSITY OF HAWAII
UNIVERSITY OF HAWAII AT MANOA
SCHOOL OF OCEAN AND EARTH
SCIENCE AND TECHNOLOGY

HAWAII INSTITUTE OF MARINE BIOLOGY
POSITION ORGANIZATION CHART

CHART XXXVIII B

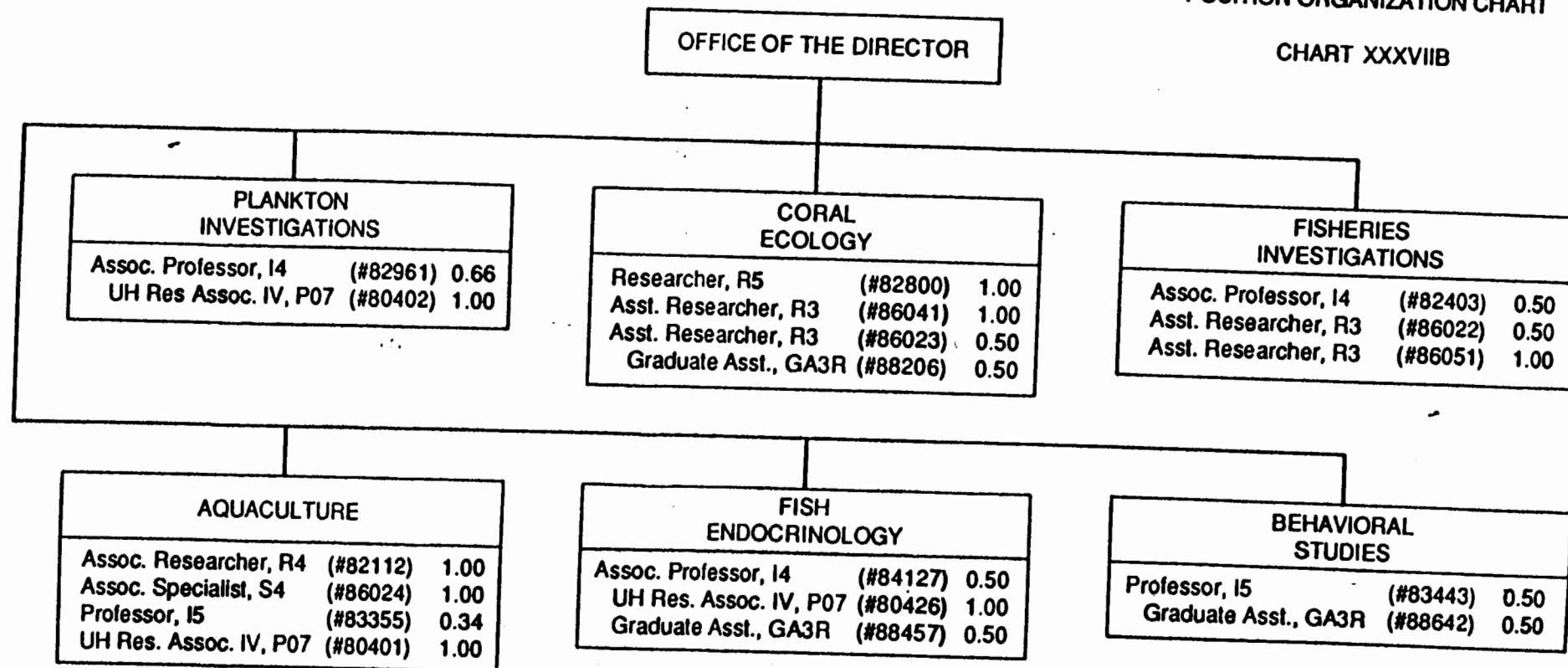



CHART UPDATED

DATE JUN 30 1992

Paul C. Yuen
Interim President/Chancellor


Paul C. Yuen

HAWAII INSTITUTE OF MARINE BIOLOGY PROPOSED POSITION ORGANIZATION CHART

OFFICE OF THE DIRECTOR

Researcher, R5 (#85339) 1.00

UH Res. Assoc. IV, PO7 (#80403) 1.00

SUPERSEDED REORG.
1/21/93

STATE OF HAWAII
UNIVERSITY OF HAWAII
UNIVERSITY OF HAWAII AT MANOA
SCHOOL OF OCEAN AND EARTH
SCIENCE AND TECHNOLOGY

HAWAII INSTITUTE OF MARINE BIOLOGY
POSITION ORGANIZATION CHART

CHART XXXVIIC

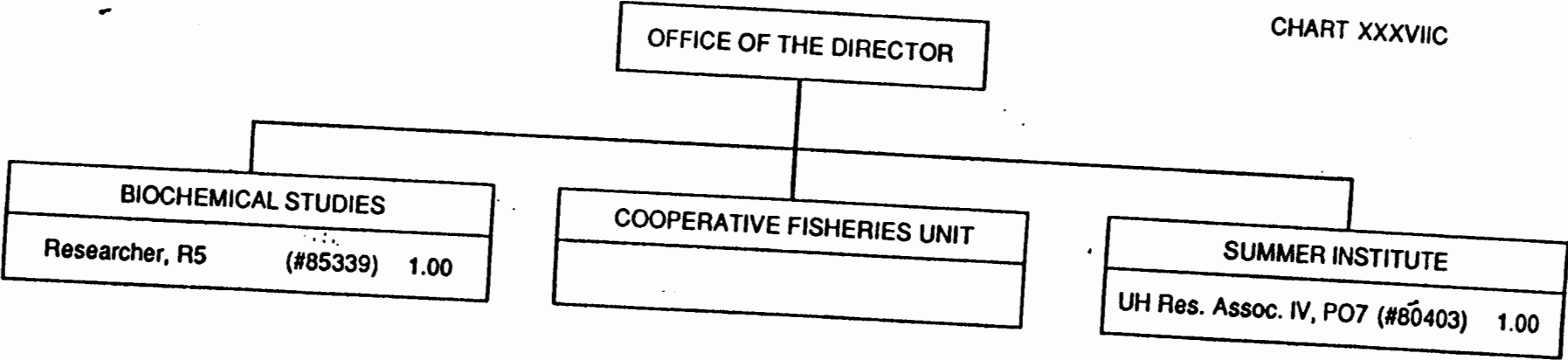


CHART UPDATED

DATE JUN 30 1992

STATE OF HAWAII
UNIVERSITY OF HAWAII
UNIVERSITY OF HAWAII AT MANOA
SCHOOL OF OCEAN AND EARTH
SCIENCE AND TECHNOLOGY

HAWAII INSTITUTE OF GEOPHYSICS
POSITION ORGANIZATION CHART

CHART XXXVIII

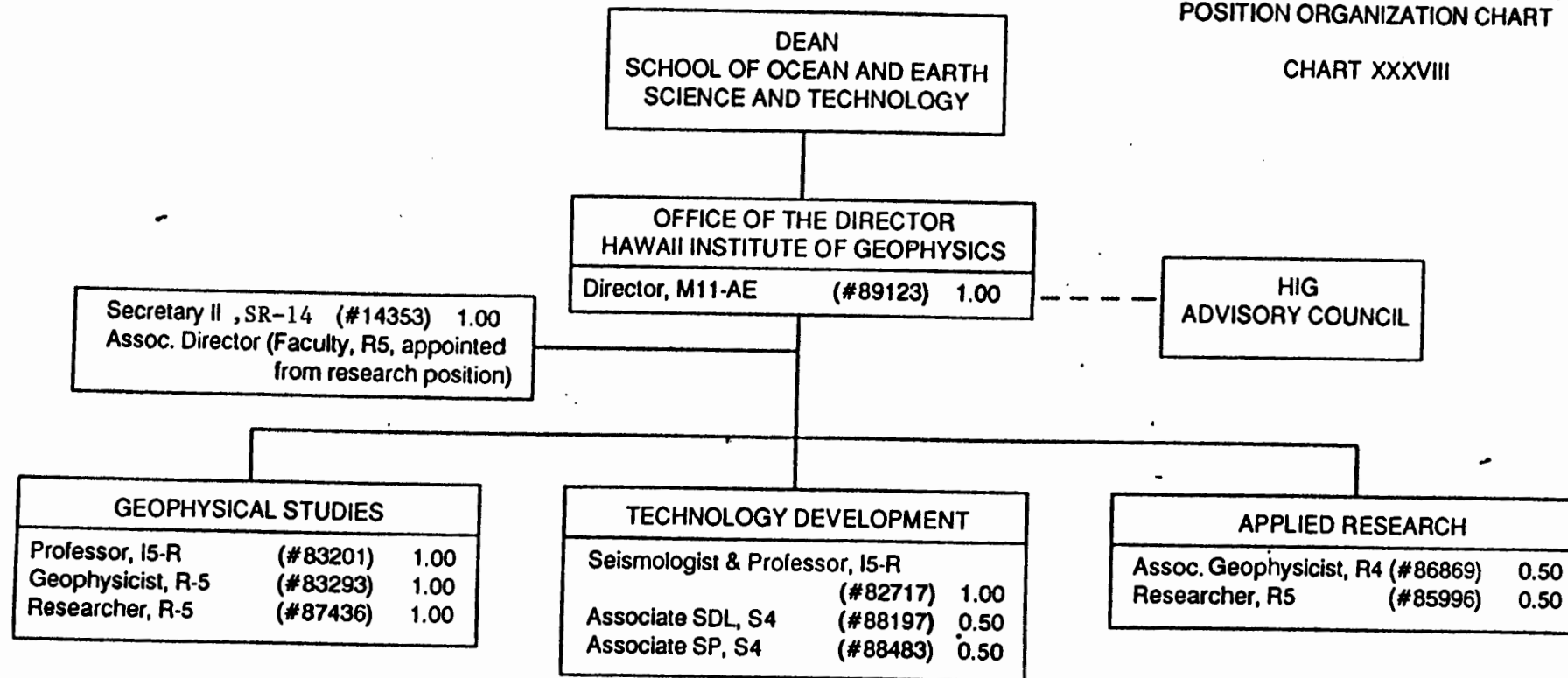


CHART UPDATED

DATE JUN 30 1992

STATE OF HAWAII
UNIVERSITY OF HAWAII
UNIVERSITY OF HAWAII AT MANOA
SCHOOL OF OCEAN AND EARTH
SCIENCE AND TECHNOLOGY

HAWAII NATURAL ENERGY INSTITUTE
POSITION ORGANIZATION CHART

CHART XXXIX

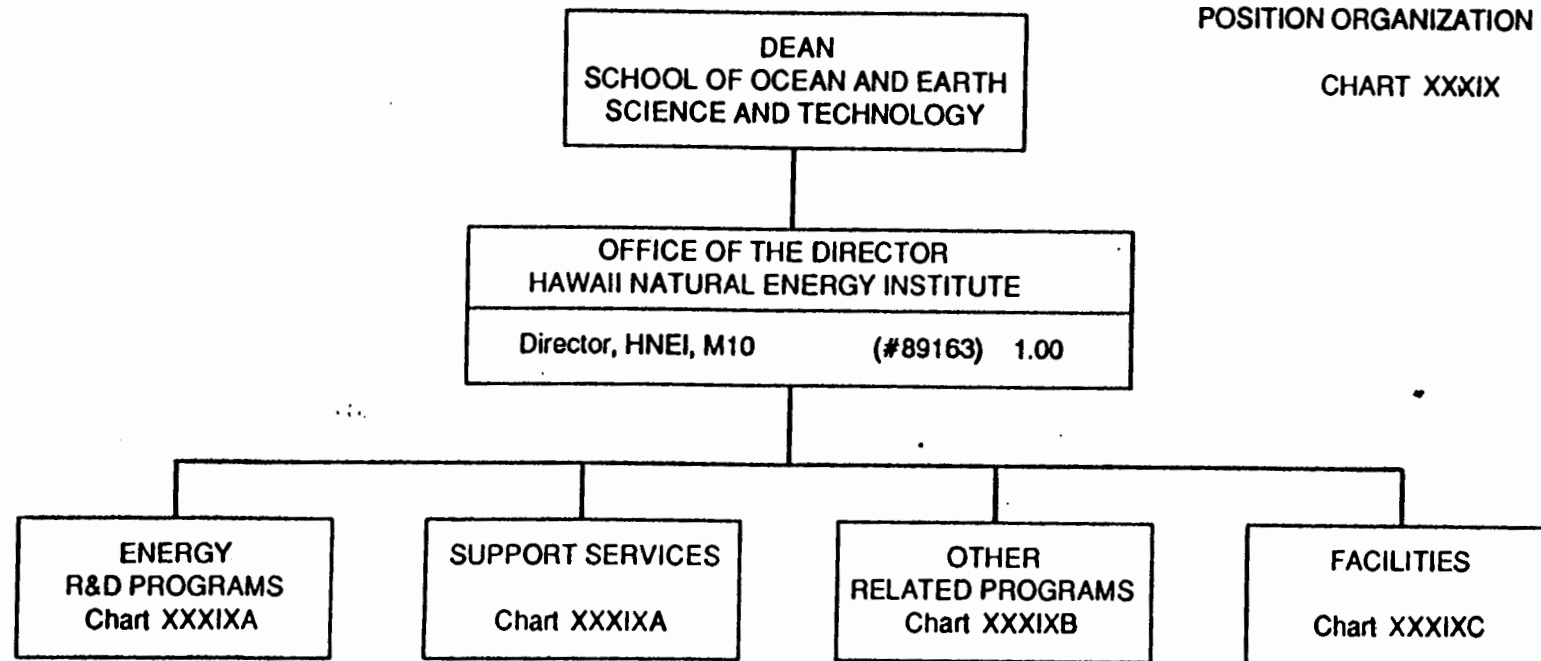


CHART UPDATED

DATE JUN 30 1992

STATE OF HAWAII
UNIVERSITY OF HAWAII
UNIVERSITY OF HAWAII AT MANOA
SCHOOL OF OCEAN AND EARTH
SCIENCE AND TECHNOLOGY

HAWAII NATURAL ENERGY INSTITUTE
POSITION ORGANIZATION CHART

CHART XXXIXA

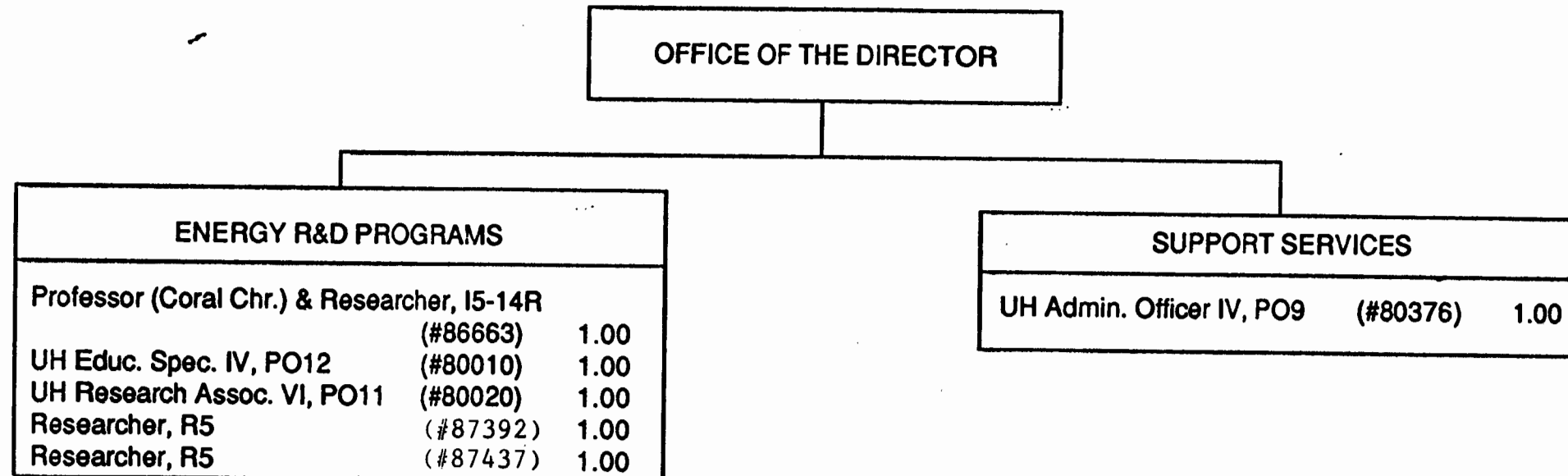


CHART UPDATED
DATE JUN 30 1992

STATE OF HAWAII
UNIVERSITY OF HAWAII
UNIVERSITY OF HAWAII AT MANOA
SCHOOL OF OCEAN AND EARTH
SCIENCE AND TECHNOLOGY
HAWAII NATURAL ENERGY INSTITUTE

CHART XXXIXB

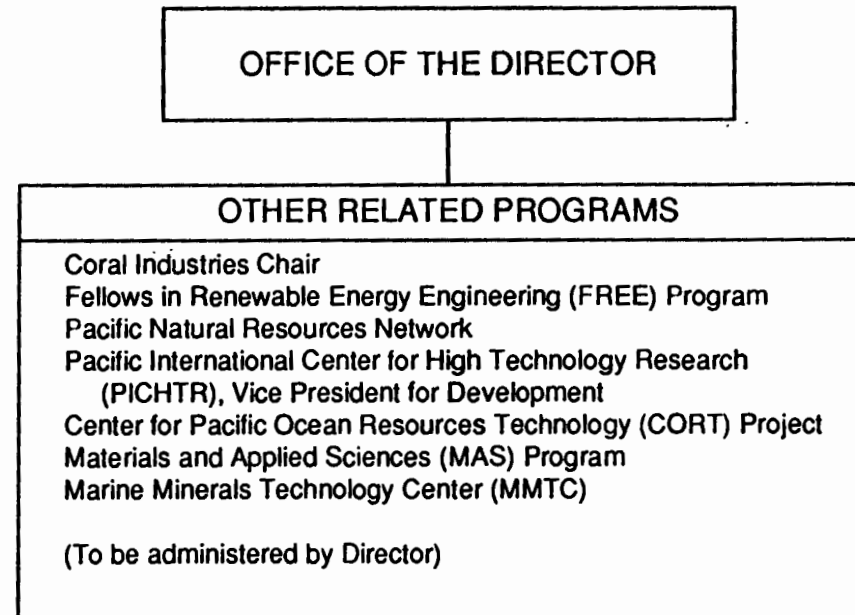


CHART UPDATED

DATE JUN 30 1992

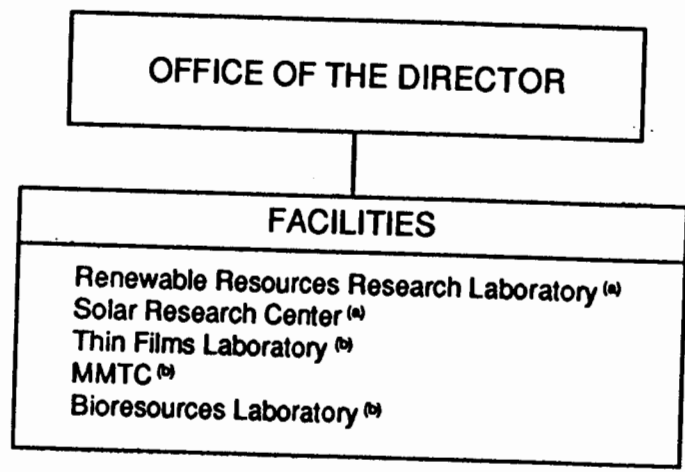
Approved:

C. Barry Raleigh
C. Barry Raleigh, Dean 06/30/92
SOEST

STATE OF HAWAII
UNIVERSITY OF HAWAII
UNIVERSITY OF HAWAII AT MANOA
SCHOOL OF OCEAN AND EARTH
SCIENCE AND TECHNOLOGY

HAWAII NATURAL ENERGY INSTITUTE

CHART XXXIXC



- (a) administered by Coral Chair
- (b) administration and research supervisory role

Approved:

C. Barry Raleigh, Dean
SOEST

06/30/92

CHART UPDATED

DATE JUN 30 1992

STATE OF HAWAII
UNIVERSITY OF HAWAII
UNIVERSITY OF HAWAII AT MANOA
SCHOOL OF OCEAN AND EARTH
SCIENCE AND TECHNOLOGY

SEA GRANT COLLEGE PROGRAM
ORGANIZATION CHART

CHART XL

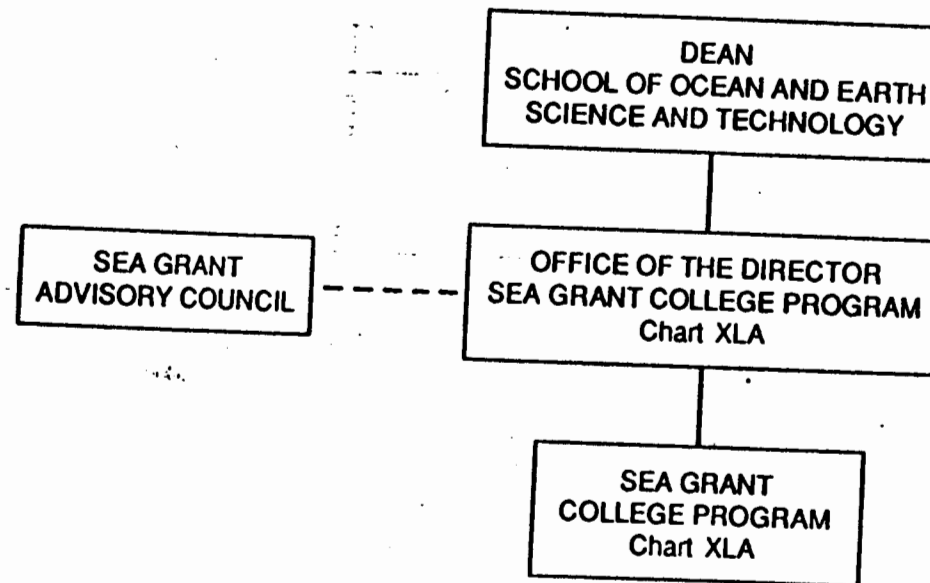


CHART UPDATED

DATE JUN 30 1992

STATE OF HAWAII
UNIVERSITY OF HAWAII
UNIVERSITY OF HAWAII AT MANOA
SCHOOL OF OCEAN AND EARTH
SCIENCE AND TECHNOLOGY

SEA GRANT COLLEGE PROGRAM
POSITION ORGANIZATION CHART

CHART XLA

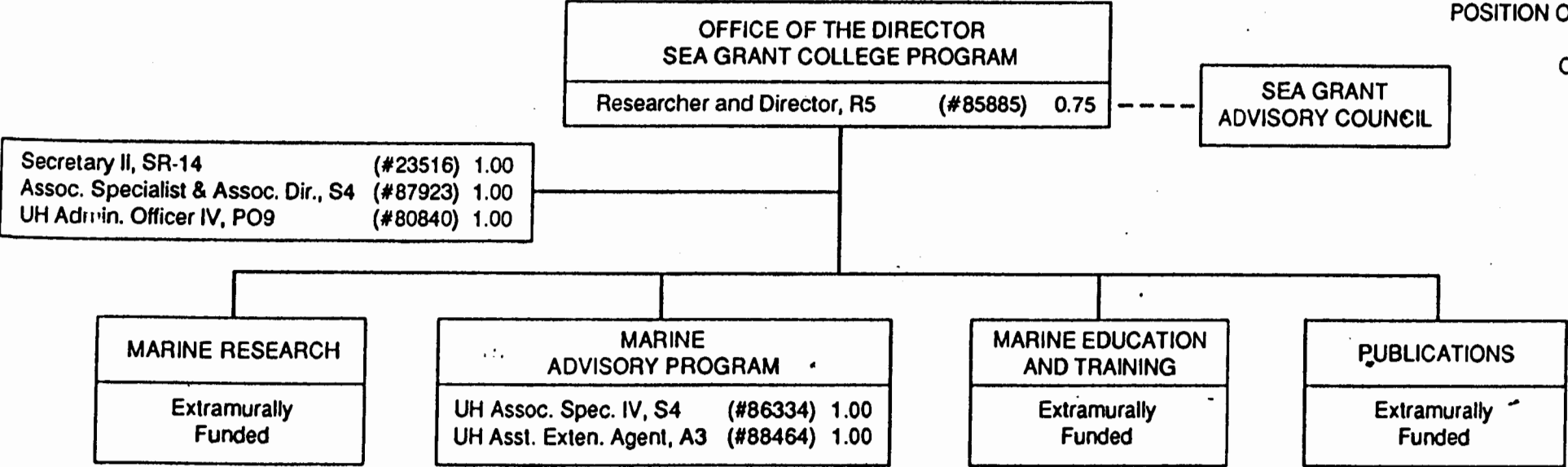


CHART UPDATED

DATE JUN 30 1992