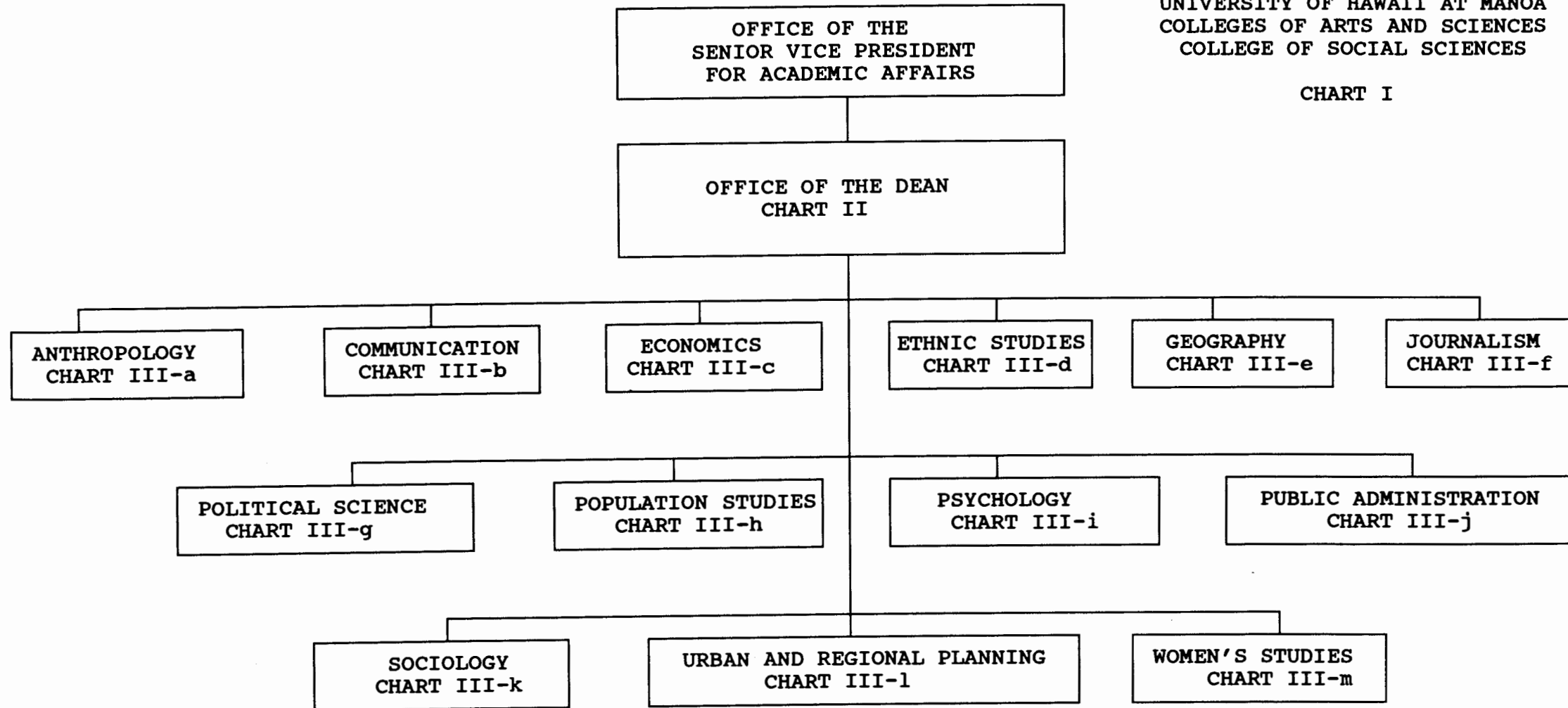


STATE OF HAWAII
UNIVERSITY OF HAWAII
UNIVERSITY OF HAWAII AT MANOA
COLLEGES OF ARTS AND SCIENCES
COLLEGE OF SOCIAL SCIENCES

CHART I



APPROVED:

R.A. Dubanoski
R.A. Dubanoski, Dean
College of Social Sciences
June 30, 1992

CHART UPDATED

DATE JUN 30 1992

STATE OF HAWAII
UNIVERSITY OF HAWAII
UNIVERSITY OF HAWAII AT MANOA
COLLEGES OF ARTS AND SCIENCES
COLLEGE OF SOCIAL SCIENCES

CHART II

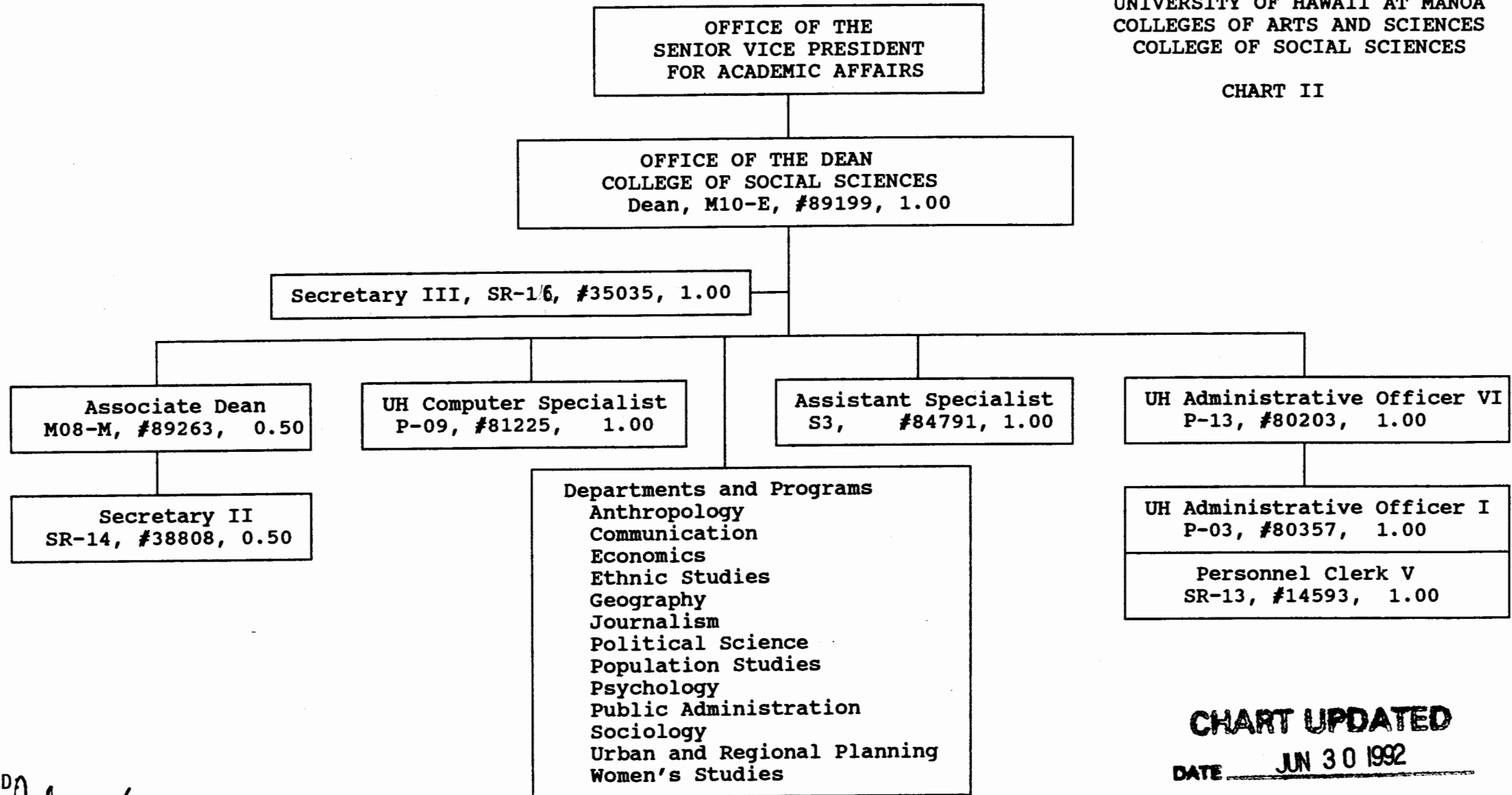


CHART UPDATED
DATE JUN 30 1992

APPROVED

R.A. Dubanoski
R.A. Dubanoski, Dean
College of Social Sciences
June 30, 1992

STATE OF HAWAII
UNIVERSITY OF HAWAII
UNIVERSITY OF HAWAII AT MANOA
COLLEGES OF ARTS AND SCIENCES
COLLEGE OF SOCIAL SCIENCES

CHART III-a

OFFICE OF THE DEAN

DEPARTMENT OF ANTHROPOLOGY

Chair (appointed from faculty positions)

Secretary II, SR-14, #13482 1.00

UH Student Services Specialist II, P-06, #80639 1.00

UH Educational Specialist II, P-06, #81746 1.00

Faculty Positions: 15.00

Full time: #82188, 82195, 82207, 82534, 82638
82779, 82797, 83004, 83358, 83405
83574, 83924, 84206, 84399, 85082

Graduate Assistants: 3.00

#83831A, 83831B, 88064, 88367
88529, 88591

21.00

CHART UPDATED

DATE JUN 30 1992

APPROVED:

R.A. Dubanoski

R.A. Dubanoski, Dean
College of Social Sciences
June 30, 1992

STATE OF HAWAII
UNIVERSITY OF HAWAII
UNIVERSITY OF HAWAII AT MANOA
COLLEGES OF ARTS AND SCIENCES
COLLEGE OF SOCIAL SCIENCES

CHART III-b

OFFICE OF THE DEAN

DEPARTMENT OF COMMUNICATION

Chair (appointed from faculty positions)

Secretary II, SR-14, #14362 1.00

Faculty Positions: 12.00

Full time: #82279, 82280, 82602, 82871, 82905
82982, 83302, 83756, 84217, 84505
88169, 88619

Graduate Assistants: 3.50

#85507, 88210, 88506, 88534, 88581
88607, 88681

16.50

CHART UPDATED

DATE JUN 30 1992

APPROVED:

R.A. Dubanoski

R.A. Dubanoski, Dean
College of Social Sciences
June 30, 1992

STATE OF HAWAII
UNIVERSITY OF HAWAII
UNIVERSITY OF HAWAII AT MANOA
COLLEGES OF ARTS AND SCIENCES
COLLEGE OF SOCIAL SCIENCES

CHART III-C

OFFICE OF THE DEAN

DEPARTMENT OF ECONOMICS

Chair (appointed from faculty positions)

Secretary II, SR-14, #15351 1.00

Clerk-Stenographer III, SR-11, #14360 1.00

Faculty Positions: 18.00

Full time: #82286, 82679, 82777, 82838, 83023
83411, 83484, 83748, 83943, 83953
84047, 84054, 84200, 84643, 84815
85027

Part time: #82741, 83611, 83650, 84928

Graduate Assistants: 4.50

#88061, 88175, 88193, 88233, 88248
88262, 88420, 88517, 88631

24.50

CHART UPDATED

DATE JUN 30 1992

APPROVED:

R.A. Dubanoski
R.A. Dubanoski, Dean
College of Social Sciences
June 30, 1992

STATE OF HAWAII
UNIVERSITY OF HAWAII
UNIVERSITY OF HAWAII AT MANOA
COLLEGES OF ARTS AND SCIENCES
COLLEGE OF SOCIAL SCIENCES

CHART III-d

OFFICE OF THE DEAN

ETHNIC STUDIES PROGRAM

Director (appointed from faculty positions)	
Secretary II, SR-12, #24006	1.00
Clerk Typist II, SR-08, #44565	1.00
Faculty Positions:	7.75
Full time: #83195, 85586, 84790, 84805, 84801, 84803, 84807	
Part time: #83191, 83738	

	9.75


APPROVED:

R.A. Dubanoski, Dean
College of Social Sciences
June 30, 1992

CHART UPDATED
DATE JUN 30 1992

STATE OF HAWAII
UNIVERSITY OF HAWAII
UNIVERSITY OF HAWAII AT MANOA
COLLEGES OF ARTS AND SCIENCES
COLLEGE OF SOCIAL SCIENCES

CHART III-e

OFFICE OF THE DEAN

DEPARTMENT OF GEOGRAPHY

Chair (appointed from faculty positions)

Secretary II, SR-14, #14358 1.00

Clerk-Stenographer II, SR-09, #18580 1.00

UH Educational Specialist II, P-06, #80641 1.00

Faculty Positions: 14.25

Full time: #82208, 82332, 82681, 82708, 83935, 82680
84209, 84254, 84518, 84565, 84841, 85298

Part time: #82328, 83275, 82338, 83522M

Graduate Assistants: 6.00

#88065, 88103, 88110, 88140, 88189
88217, 88232, 88391, 88416, 88446,
88446M, 88620

23.25

CHART UPDATED

DATE JUN 30 1992

APPROVED:

R.A. Dubanoski

R.A. Dubanoski, Dean
College of Social Sciences
June 30, 1992

STATE OF HAWAII
UNIVERSITY OF HAWAII
UNIVERSITY OF HAWAII AT MANOA
COLLEGES OF ARTS AND SCIENCES
COLLEGE OF SOCIAL SCIENCES

CHART III-f

OFFICE OF THE DEAN

DEPARTMENT OF JOURNALISM

Chair (appointed from faculty positions)

Secretary II, SR-14, #13807

1.00

Clerk Typist II, SR-08, #44398

1.00

Faculty Positions:

8.00

Full time: #82500, 82611, 82946, 83458
84115, 84478, 84792, 84809

10.00

APPROVED:

R.A. Dubanoski

R.A. Dubanoski, Dean
College of Social Sciences
June 30, 1992

CHART UPDATED

DATE JUN 30 1992

STATE OF HAWAII
UNIVERSITY OF HAWAII
UNIVERSITY OF HAWAII AT MANOA
COLLEGES OF ARTS AND SCIENCES
COLLEGE OF SOCIAL SCIENCES

CHART III-g

OFFICE OF THE DEAN

DEPARTMENT OF POLITICAL SCIENCE

Chair (appointed from faculty positions)

Secretary II, SR-14, #11112 1.00

Clerk-Stenographer II, SR-09, #14363 1.00

Clerk-Stenographer II, SR-09, #21775 1.00

Faculty Positions: 23.00

Full time: #82145, 82278, 82317, 82672, 82823
82913, 83085, 83162, 83194, 83197
83311, 83370, 83621, 83753, 83858
84023, 84042, 84109, 84130, 84234
84556, 84800

Part time: #83277, 83778, 84059, 88549

Graduate Assistants: 3.50

#88076, 88090, 88238, 88336, 88407
88676, 88676A

29.50

APPROVED:

R.A. Dubanoski

R.A. Dubanoski, Dean
College of Social Sciences
June 30, 1992

CHART UPDATED

DATE JUN 30 1992

STATE OF HAWAII
UNIVERSITY OF HAWAII
UNIVERSITY OF HAWAII AT MANOA
COLLEGES OF ARTS AND SCIENCES
COLLEGE OF SOCIAL SCIENCES

CHART III-h

OFFICE OF THE DEAN

POPULATION STUDIES PROGRAM

Director (appointed from faculty positions)

0.00

APPROVED:

R.A. Dubanoski

R.A. Dubanoski, Dean
College of Social Sciences
June 30, 1992

CHART UPDATED

DATE JUN 30 1992

STATE OF HAWAII
UNIVERSITY OF HAWAII
UNIVERSITY OF HAWAII AT MANOA
COLLEGES OF ARTS AND SCIENCES
COLLEGE OF SOCIAL SCIENCES

CHART III-i

OFFICE OF THE DEAN

DEPARTMENT OF PSYCHOLOGY

Chair (appointed from faculty positions)
Director, Clinical Studies (appointed from faculty positions)

Secretary II, SR-14, #12856	1.00
Clerk-Stenographer III, SR-11, #19052	1.00
Clerk-Stenographer II, SR-09, #21971	1.00
UH Student Services Specialist III, P-09, #80638	1.00

Faculty Positions: 25.25

Full time: #82198, 82294, 82398, 82412, 82471, 82537, 82564
82615, 82916, 83092, 83110, 83507, 83626, 84131
84225, 84346, 84416, 84491, 84497, 84827, 84866
85075, 88005

Part time: #82192, 83799, 84319, 84861M, 84810, 83498

Graduate Assistants: 4.00

#85148, 88046, 88060, 88252, 88320, 88362, 88511
88559

33.75

APPROVED:

R.A. Dubanoski

R.A. Dubanoski, Dean
College of Social Sciences
June 30, 1992

CHART UPDATED

DATE JUN 30 1992

STATE OF HAWAII
UNIVERSITY OF HAWAII
UNIVERSITY OF HAWAII AT MANOA
COLLEGES OF ARTS AND SCIENCES
COLLEGE OF SOCIAL SCIENCES

CHART III-j

OFFICE OF THE DEAN

PUBLIC ADMINISTRATION PROGRAM

Director (appointed from faculty positions)

Faculty Positions:

4.00

Full time: #84788, 84789, 84797, 84798

4.00

APPROVED:

R.A. Dubanoski

R.A. Dubanoski, Dean
College of Social Sciences
June 30, 1992

CHART UPDATED

DATE JUN 30 1992

STATE OF HAWAII
UNIVERSITY OF HAWAII
UNIVERSITY OF HAWAII AT MANOA
COLLEGES OF ARTS AND SCIENCES
COLLEGE OF SOCIAL SCIENCES

CHART III-k

OFFICE OF THE DEAN

DEPARTMENT OF SOCIOLOGY

Chair (appointed from faculty positions)

Secretary II, SR-14, #13485 1.00

Clerk-Stenographer II, SR-09, #16953 1.00

UH Student Services Specialist II, P-06, #80640 1.00

Faculty Positions: 19.00

Full time: #82097, 82114, 82125, 82204, 82323, 82605
83050, 83164, 83867, 84076, 84121, 84237M
84286, 84456M, 84502M, 84504, 84575, 84616
84642

Graduate Assistants: 5.50

#88008, 88100, 88182, 88208, 88268, 88408
88485, 88498, 88533, 88616, 88392

27.50

CHART UPDATED

DATE JUN 30 1992

APPROVED:

R.A. Dubanoski

R.A. Dubanoski, Dean
College of Social Sciences
June 30, 1992

STATE OF HAWAII
UNIVERSITY OF HAWAII
UNIVERSITY OF HAWAII AT MANOA
COLLEGES OF ARTS AND SCIENCES
COLLEGE OF SOCIAL SCIENCES

CHART III-1

OFFICE OF THE DEAN

DEPARTMENT OF URBAN AND REGIONAL PLANNING

Chair (appointed from faculty positions)

Secretary II, SR-14, #15640

1.00

Faculty Positions:

6.00

Full time: #82539, 83624, 84060, 84522, 85736, 82377

7.00

APPROVED:

R.A. Dubanoski

R.A. Dubanoski, Dean
College of Social Sciences
June 30, 1992

CHART UPDATED

DATE JUN 30 1992

STATE OF HAWAII
UNIVERSITY OF HAWAII
UNIVERSITY OF HAWAII AT MANOA
COLLEGES OF ARTS AND SCIENCES
COLLEGE OF SOCIAL SCIENCES

CHART III-m

OFFICE OF THE DEAN

WOMEN'S STUDIES PROGRAM

Director (appointed from faculty positions)

Secretary II, SR-14, #31328

.75

Faculty Positions:

4.25

Full time: #82870

Part time: #82318, 82770M, 84034M, 84057M
85962, 86070, 86071M

5.00

CHART UPDATED

DATE JUN 30 1992

APPROVED:

R.A. Dubanoski

R.A. Dubanoski, Dean
College of Social Sciences
June 30, 1992