

State of Hawai`i  
University of Hawai`i  
University of Hawai`i at Manoa

Office: UHM Student Services

Chart: IV

**OFFICE OF THE VICE PRESIDENT FOR STUDENT AFFAIRS  
CHART IV-A**

**OFFICE OF ADMINISTRATIVE SERVICES  
CHART IV-A**

**OFFICE OF THE DIRECTOR OF STUDENT  
EQUITY, EXCELLENCE AND DIVERSITY  
CHART IV-A**

Center for Adults  
Returning to Education  
Chart IV-O

Hawai`i Opportunity  
Program in Education  
Chart IV-P

Operation Kua`ana  
Chart IV-Q

Women's Center  
Chart IV-M

College Opportunities  
Program  
Chart IV-L

KOKUA Program  
Chart IV-S

Operation Manong  
Chart IV-R

**OFFICE OF THE DEAN OF STUDENTS  
AND STUDENT SERVICES (UHM)  
CHART IV-A**

Co-curricular Activities,  
Programs and Services  
Chart IV-D

Counseling and  
Student Development Center  
Chart IV-J

International  
Student Services  
Chart IV-H

Student Employment and  
Cooperative Education  
Chart IV-G

Student Housing Services  
Chart IV-E

Career Placement  
Services  
Chart IV-I

Children's Center  
Chart IV-N

School and College  
Services  
Chart IV-F

Student Health Services  
Chart IV-K

**OFFICE OF THE DIRECTOR OF UNIVERSITYWIDE  
STUDENT AFFAIRS/ASSISTANT TO THE VP  
CHART IV-A**

Admissions and Records  
Chart IV-B

Financial Aid Services  
Chart IV-C

APPROVED BY THE UNIVERSITY  
BOARD OF REGENTS

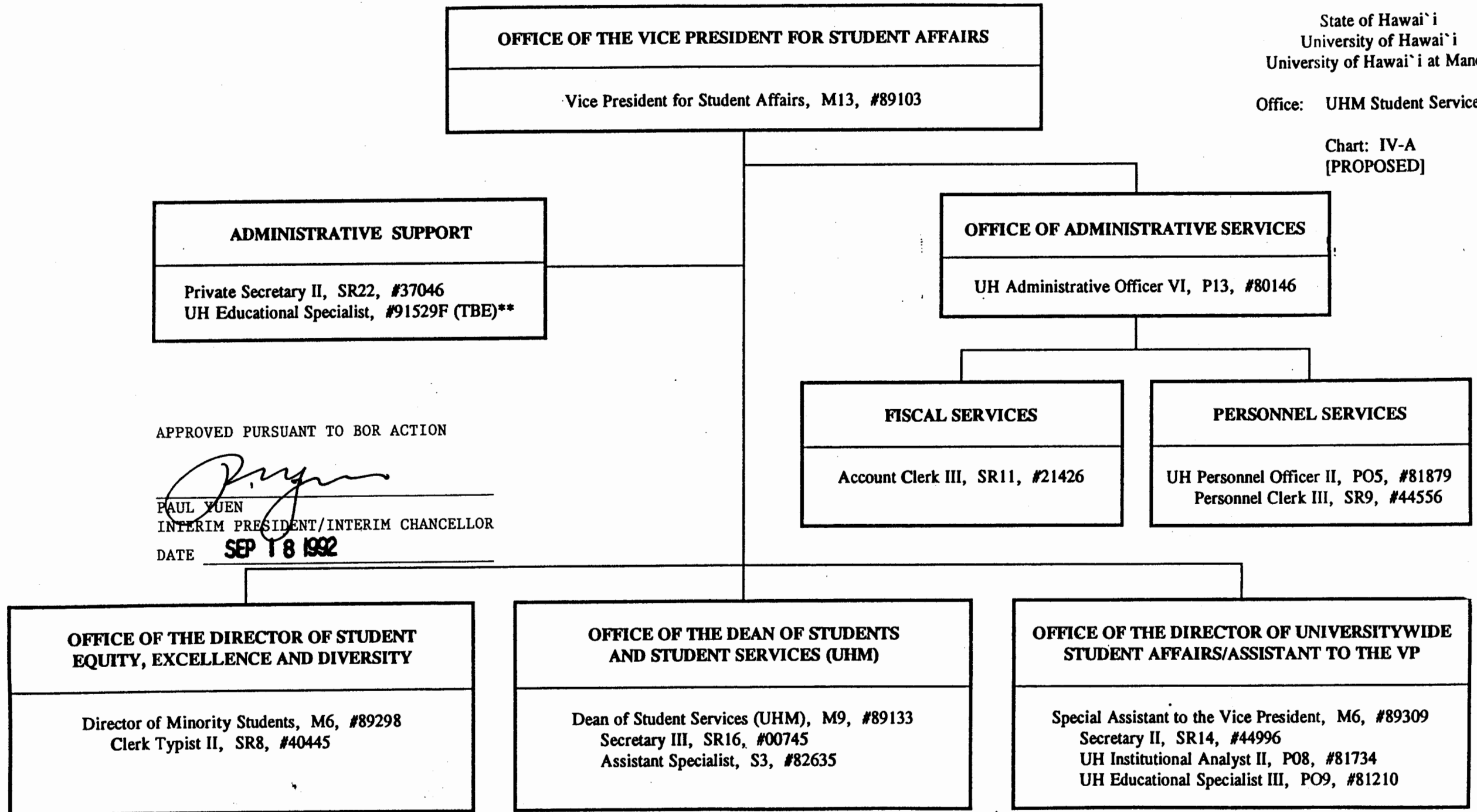
SEP 18 1992

Date

State of Hawai'i  
University of Hawai'i  
University of Hawai'i at Manoa

Office: UHM Student Services

Chart: IV-A  
[PROPOSED]



\*\*To Be Established With Variance To Managerial Position

**OFFICE OF THE DIRECTOR OF UNIVERSITYWIDE  
STUDENT AFFAIRS/ASSISTANT TO THE VP**

State of Hawai'i  
University of Hawai'i  
University of Hawai'i at Manoa

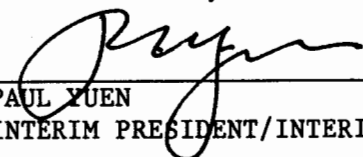
Office: UHM Student Services  
Admissions and Records

Chart: IV-B  
[PROPOSED]

**ADMISSIONS AND RECORDS**

Specialist, S5, #82701

APPROVED PURSUANT TO BOR ACTION

  
PAUL YUEN

INTERIM PRESIDENT/INTERIM CHANCELLOR

DATE **SEP 18 1992**

**ADMINISTRATIVE SUPPORT**

Secretary II, SR14, #00751

Specialist, S5, #83776

Secretary I, SR12, #14866

Clerk Supervisor IV, SR16, #21429

UH Student Services Specialist IV, P12, #81154 (.3)

**ADMISSIONS AND RESIDENCY**

UH Student Services Specialist IV, P12, #81154 (.7)

Clerk Supervisor III, SR14, #00748

Clerk IV, SR10, #00772, #12550

#12842, #12843

#13495, #13496

#18009, #21427

UH Student Services Specialist III, P09, #80626

UH Student Services Specialist III, P09, #81414

UH Student Services Specialist III, P09, #80625

Clerk IV, SR10, #11496

Clerk IV, SR10, #26538

**RECORDS AND REGISTRATION**

UH Student Services Specialist IV, P12, #81614

UH Student Services Specialist III, P09, #80658

Clerk Supervisor III, SR14, #17447

Clerk IV, SR10, #00750, #13959

#14863, #14864

#14865, #15502

#17450, #18010

#18011, #21430

Clerk III, SR8, #13494

Clerk III, SR8, #26539

Clerk Typist II, SR8, #40006

Scheduler, SR20, #05837

**INFORMATION AND  
COMPUTER SERVICES**

UH Student Services Specialist III, P09, #81070

UH Data Processing Coordinator, P05, #80017

UH Student Services Specialist I, P03, #81071

Clerk Supervisor II, SR12, #22322

Clerk IV, SR10, #40004

Clerk IV, SR10, #40005

Clerk-Stenographer II, SR9, #22321

Clerk III, SR8, #15501

Clerk III, SR8, #40003

UH Computer Specialist I, P03, #80018

State of Hawai`i  
University of Hawai`i  
University of Hawai`i at Manoa

Office: UHM Student Services  
Financial Aid Services

Chart: IV-C  
[PROPOSED]

**OFFICE OF THE DIRECTOR OF UNIVERSITYWIDE  
STUDENT AFFAIRS/ASSISTANT TO THE VP**

**FINANCIAL AID SERVICES**

Director of Financial Aid, M4, #89184

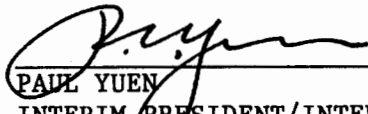
**ADMINISTRATIVE SUPPORT**

Secretary II, SR14, #05737

**PROGRAM SPECIALISTS**

UH Student Services Specialist III, P09, #81913  
UH Student Services Specialist II, P06, #81608  
UH Student Services Specialist II, P06, #81607  
UH Student Services Specialist II, P06, #81606  
UH Student Services Specialist II, P06, #81609  
UH Student Services Specialist II, P06, #81151  
UH Student Services Specialist II, P06, #80922

APPROVED PURSUANT TO BOR ACTION

  
PAUL YUEN

INTERIM PRESIDENT/INTERIM CHANCELLOR

DATE

SEP 18 1992

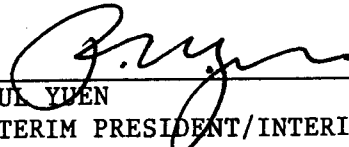
**DATA AND CLERICAL SUPPORT SECTION**

Clerical Supervisor III, SR14, #17599  
Clerk-Typist III, SR10, #16967  
Clerk-Typist III, SR10, #15265  
Clerk-Typist III, SR10, #17600  
Clerk-Typist III, SR10, #10929  
Clerk III, SR8, #44397

**OFFICE OF THE DEAN OF STUDENTS AND STUDENT SERVICES (UHM)**

State of Hawai`i  
University of Hawai`i  
University of Hawai`i at Manoa

APPROVED PURSUANT TO BOR ACTION

  
PAUL YUEN  
INTERIM PRESIDENT/INTERIM CHANCELLOR

DATE SEP 18 1992

Office: UHM Student Services  
Co-curricular Activities,  
Programs and Services

Chart: IV-D  
[PROPOSED]

**CO-CURRICULAR ACTIVITIES, PROGRAMS AND SERVICES**

Director of Bureau of Student Activities, M4, #89190

**ADMINISTRATIVE AND FISCAL SUPPORT**

UH Administrative Officer III, P7, #80163 (R)  
UH Adm/Fiscal Support Specialist, P1, #80649 (R)  
Account Clerk III, SR11, #25700 (R)  
Account Clerk, #45362 (R)

**CLERICAL SUPPORT**

Secretary II, SR14, #13587  
Clerk-Typist II, SR3, #28134 (R)  
Clerk-Typist II, SR3, #25699 (R)  
Clerk II, SR6, #25698 (R)

**INTRAMURAL SPORTS**

Specialist, S5, #83512  
Specialist, S5, #85083  
Junior Specialist, S2, #83788  
Clerk-Stenographer II, SR9, #26460

**STUDENT LEADERSHIP DEVELOPMENT AND  
CO-CURRICULAR  
INTERVENTION PROGRAMS**

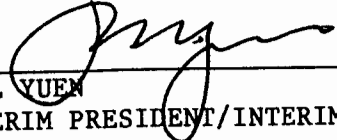
Assistant Specialist, S3, #82864  
Assistant Specialist, S3, #83668  
Assistant Specialist, S3, #82573  
Assistant Specialist, S3, #82597  
UH Adm/Fiscal Support Specialist, P1, #81510 (R)  
UH Student Services Specialist II, P6, #81374 (R)  
UH Student Services Specialist II, #80025 (R)  
Assistant Specialist, S3, #88334 (R)  
UH Adm/Fiscal Support Specialist, P1, #81137 (R)  
UH Publication Specialist II, P7, #81186 (R)

**OPERATIONAL PROGRAMS,  
FACILITIES AND SERVICES**

UH Student Services Specialist III, P9, #80660 (R)  
Building Maintenance I, WB9, #28597 (R)  
Janitor II, WB2, #25329 (R)  
Janitor II, WB2, #25392 (R)  
Janitor II, WB2, #44089 (R)  
UH Student Services Specialist, P6, #80631 (R)  
UH Ed/Acad Support Specialist, P1, #80942 (R)  
UH Student Services Specialist, #92524F (R) (TBE)\*

\* To Be Established

APPROVED PURSUANT TO BOR ACTION

  
PAUL YUEN  
INTERIM PRESIDENT/INTERIM CHANCELLOR

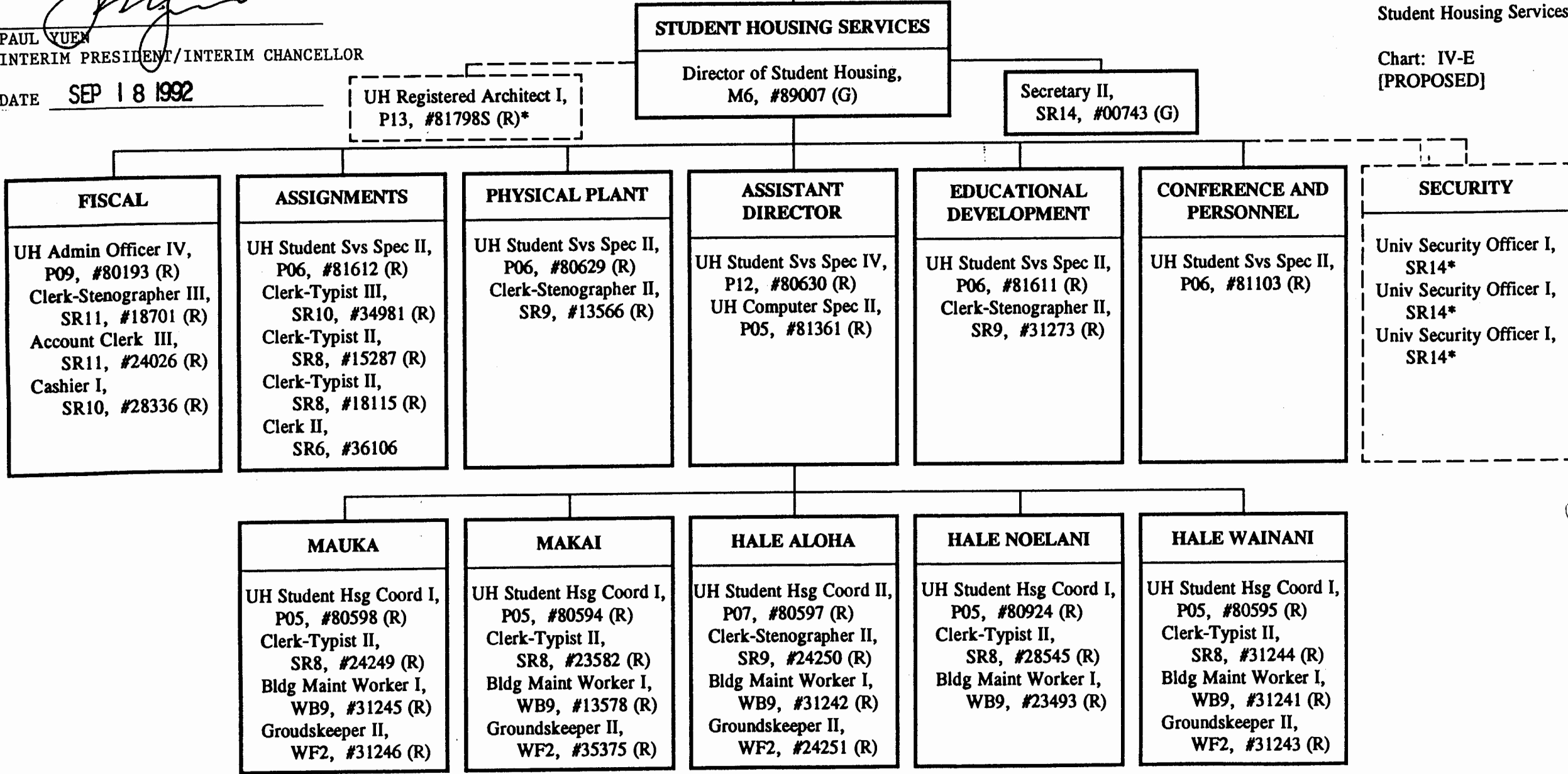
DATE SEP 18 1992

OFFICE OF THE DEAN OF STUDENTS AND STUDENT SERVICES (UHM)

State of Hawai'i  
University of Hawai'i  
University of Hawai'i at Manoa

Office: UHM Student Services  
Student Housing Services

Chart: IV-E  
[PROPOSED]



\* Student Housing Office Position Assigned to Campus Operations

**OFFICE OF THE DEAN OF STUDENTS  
AND STUDENT SERVICES (UHM)**

**SCHOOL AND COLLEGE SERVICES**

Specialist, S5, #82771

**ADMINISTRATIVE SUPPORT**

Secretary II, SR14, #25830

Assistant Specialist, S3, #88147

Assistant Specialist, S3, #82637

UH Student Services Specialist II, P06, #81134


UH Student Services Specialist II, P06, #80463

State of Hawai`i  
University of Hawai`i  
University of Hawai`i at Manoa

Office: UHM Student Services  
School and College Services

Chart: IV-F  
[PROPOSED]

APPROVED PURSUANT TO BOR ACTION

  
PAUL YUEN  
INTERIM PRESIDENT/INTERIM CHANCELLOR

DATE SEP 18 1992

**OFFICE OF THE DEAN OF STUDENTS  
AND STUDENT SERVICES (UHM)**

State of Hawai`i  
University of Hawai`i  
University of Hawai`i at Manoa

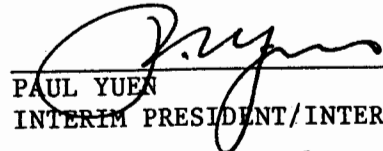
Office: UHM Student Services  
Student Employment and  
Cooperative Education

Chart: IV-G  
[PROPOSED]

**STUDENT EMPLOYMENT AND COOPERATIVE EDUCATION**

UH Student Services Specialist IV, P12, #80661

APPROVED PURSUANT TO BOR ACTION

  
PAUL YUEN  
INTERIM PRESIDENT/INTERIM CHANCELLOR  
DATE SEP 18 1992

**ADMINISTRATIVE SUPPORT**

UH Student Services Specialist, #92573F (TBE)\*  
Graduate Assistant, #92575F (TBE)\*\* (.50)  
Secretary II, SR14, #11046  
Clerk Typist, #92035F, (TBE)\*

**STUDENT EMPLOYMENT SERVICES**

UH Student Services Specialist II, P06, #81063  
UH Student Services Specialist, #92574F (TBE)\*  
UH Educ and Acad Support Spec, P01, #80453S

**COOPERATIVE EDUCATION**

Junior Specialist, S2, #88117  
Junior Specialist, S2, #88121S  
Junior Specialist, #88145

\* To Be Established

\*\* To Be Established With Variance To UH Educational And Academic Support Specialist



**OFFICE OF THE DEAN OF STUDENTS  
AND STUDENT SERVICES (UHM)**

**INTERNATIONAL STUDENT SERVICES**

Assistant Specialist, S3, #84594

**ADMINISTRATIVE SUPPORT**

Secretary II, SR14, #00763

Clerk-Stenographer II, SR9, #12763

Junior Specialist, S2, #88126

Junior Specialist, S2, #83747

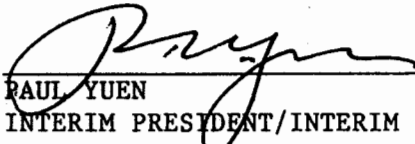
Junior Specialist, S2, #88327

State of Hawai`i  
University of Hawai`i  
University of Hawai`i at Manoa

Office: UHM Student Services  
International Student Services

Chart: IV-H  
[PROPOSED]

APPROVED PURSUANT TO BOR ACTION

  
PAUL YUEN  
INTERIM PRESIDENT/INTERIM CHANCELLOR  
DATE SEP 18 1992

**OFFICE OF THE DEAN OF STUDENTS  
AND STUDENT SERVICES (UHM)**

**CAREER PLACEMENT SERVICES**

Specialist, S5, #83382

**ADMINISTRATIVE SUPPORT**

Secretary II, SR14, #14337

Clerk-Stenographer II, SR9, #42979

Junior Specialist, S2, #88125

Junior Specialist, S2, #83548

Assistant Specialist, S3, #88325

Junior Specialist, S2, #88326

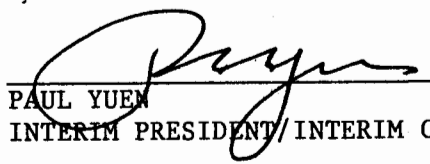
UH Student Services Specialist II, P06, #81434

State of Hawai`i  
University of Hawai`i  
University of Hawai`i at Manoa

Office: UHM Student Services  
Career Placement Services

Chart: IV-I  
[PROPOSED]

APPROVED PURSUANT TO BOR ACTION

  
PAUL YUEN  
INTERIM PRESIDENT/INTERIM CHANCELLOR

DATE SEP 18 1992

State of Hawai`i  
University of Hawai`i  
University of Hawai`i at Manoa

Office: UHM Student Services  
Counseling and Student  
Development Center

Chart: IV-J  
[PROPOSED]

**OFFICE OF THE DEAN OF STUDENTS  
AND STUDENT SERVICES (UHM)**

**COUNSELING AND STUDENT  
DEVELOPMENT CENTER**

Specialist, S5, #83151

**ADMINISTRATIVE SUPPORT**

Secretary II, SR14, #00746  
Clerk Typist II, SR8, #15354

**LEARNING ASSISTANCE**

Junior Specialist, S2, #84554  
Assistant Specialist, S3, #88143

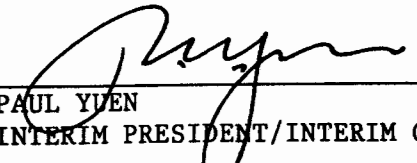
**TESTING**

UH Student Services Specialist II, P06, #80632

**COUNSELING**

Specialist, S5, #82048 (.50)  
Specialist, S5, #83635 (.50)  
Specialist, S5, #82695  
Assistant Specialist, S3, #82698  
Assistant Specialist, S4, #83035  
Specialist, S5, #83114  
Assistant Specialist, S3, #84139  
Associate Specialist, S3, #84173

APPROVED PURSUANT TO BOR ACTION

  
PAUL YUEN  
INTERIM PRESIDENT/INTERIM CHANCELLOR

DATE SEP 18 1992

**OFFICE OF THE DEAN OF STUDENTS  
AND STUDENT SERVICES (UHM)**

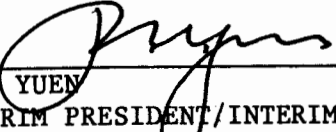
**STUDENT HEALTH SERVICES**

Specialist, S5, #82341

**ADMINISTRATIVE SUPPORT**

Assistant Specialist, S3, #83539  
Secretary II, SR14, #15353  
Clerk-Stenographer II, SR9, #21512  
Medical Records Technician VI, SR13, #03723  
Clerk-Typist II, SR8, #35147 (.50)

APPROVED PURSUANT TO BOR ACTION

  
PAUL YUEN  
INTERIM PRESIDENT/INTERIM CHANCELLOR

DATE SEP 18 1992

**MEDICAL STAFF**

Specialist, S5, #84576 (.50)  
Specialist, S5, #84576A (.50)  
Specialist, S5, #83261 (.50)  
Specialist, S5, #83397 (.50)  
Specialist, S5, #84581 (.50)

**NURSING STAFF**

Registered Professional Nurse IV,  
SR22, #10312  
Registered Professional Nurse III,  
SR20, #13616  
Registered Professional Nurse III,  
SR20, #13614  
Registered Professional Nurse III,  
SR20, #22672  
Registered Professional Nurse III,  
SR20, #13615  
Registered Professional Nurse III,  
SR20, #18091  
Registered Professional Nurse III,  
SR20, #13730 (.50)

**FAMILY PLANNING CLINIC**

Registered Professional Nurse IV,  
SR22, #41706 (.50)

**LABORATORY**

UH Medical Technician,  
P07, #80671 (.50)

**OFFICE OF THE DIRECTOR OF STUDENT  
EQUITY, EXCELLENCE AND DIVERSITY**

State of Hawai`i  
University of Hawai`i  
University of Hawai`i at Manoa

Office: UHM Student Services  
College Opportunities Program

Chart: IV-L  
[PROPOSED]

**COLLEGE OPPORTUNITIES PROGRAM**

UH Educational Specialist IV, P12, #80582

**ADMINISTRATIVE SUPPORT**

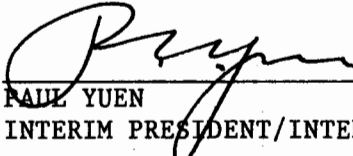
Secretary II, SR14, #23086

UH Student Services Specialist II, P06, #80628

UH Student Services Specialist II, P06, #81736 (.50)

UH Student Services Specialist I, P03, #80606

APPROVED PURSUANT TO BOR ACTION

  
PAUL YUEN  
INTERIM PRESIDENT/INTERIM CHANCELLOR  
DATE SEP 18 1992

State of Hawai'i  
University of Hawai'i  
University of Hawai'i at Manoa

Office: UHM Student Services  
Women's Center

Chart: IV-M  
[PROPOSED]

OFFICE OF THE DIRECTOR OF STUDENT  
EQUITY, EXCELLENCE AND DIVERSITY

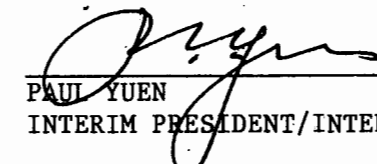
WOMEN'S CENTER

Junior Specialist, S2, #88123 (.50)

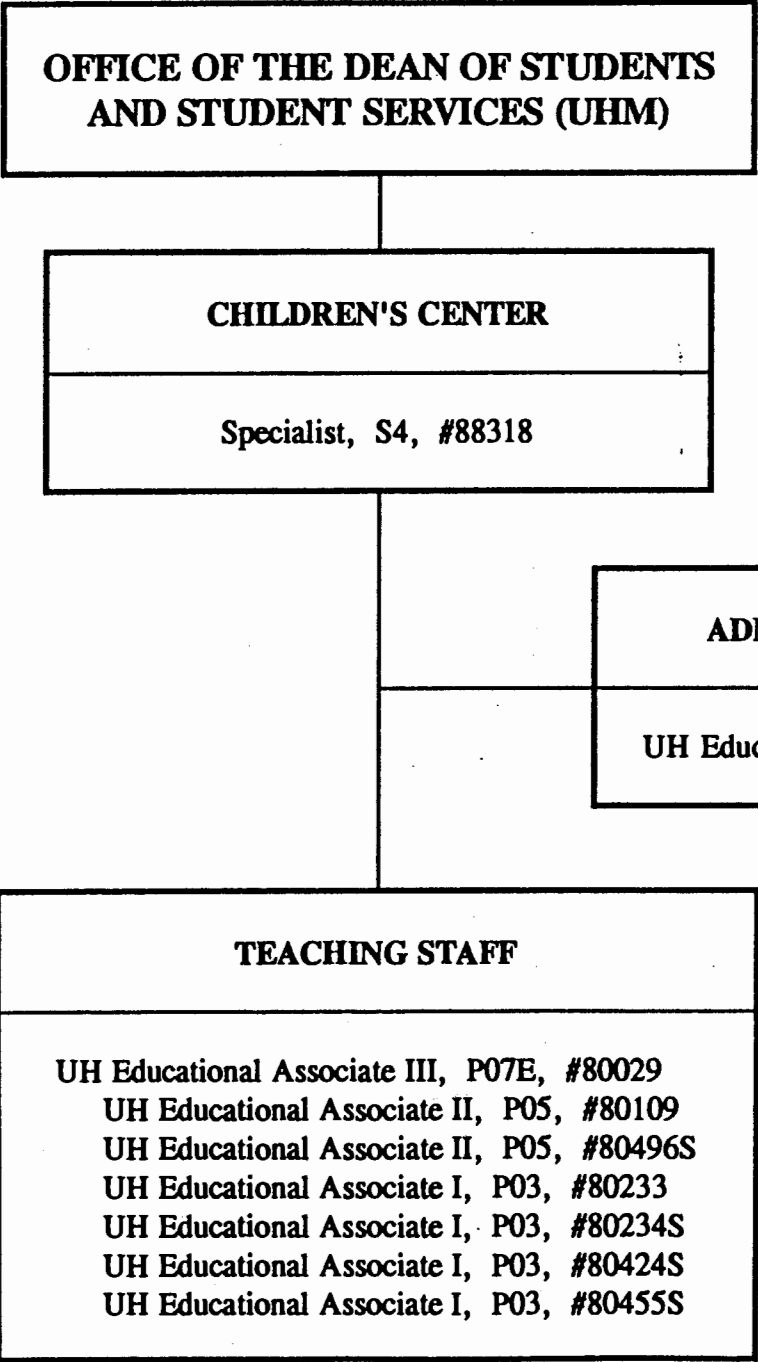
Junior Specialist, S2, #88144 (.50)

Clerk-Typist II, SR8, #44988 (.50)

APPROVED PURSUANT TO BOR ACTION

  
PAUL YUEN  
INTERIM PRESIDENT/INTERIM CHANCELLOR

DATE SEP 18 1992




State of Hawai`i  
University of Hawai`i  
University of Hawai`i at Manoa

Office: UHM Children's Center

Chart: IV-N  
[PROPOSED]

APPROVED PURSUANT TO BOR ACTION

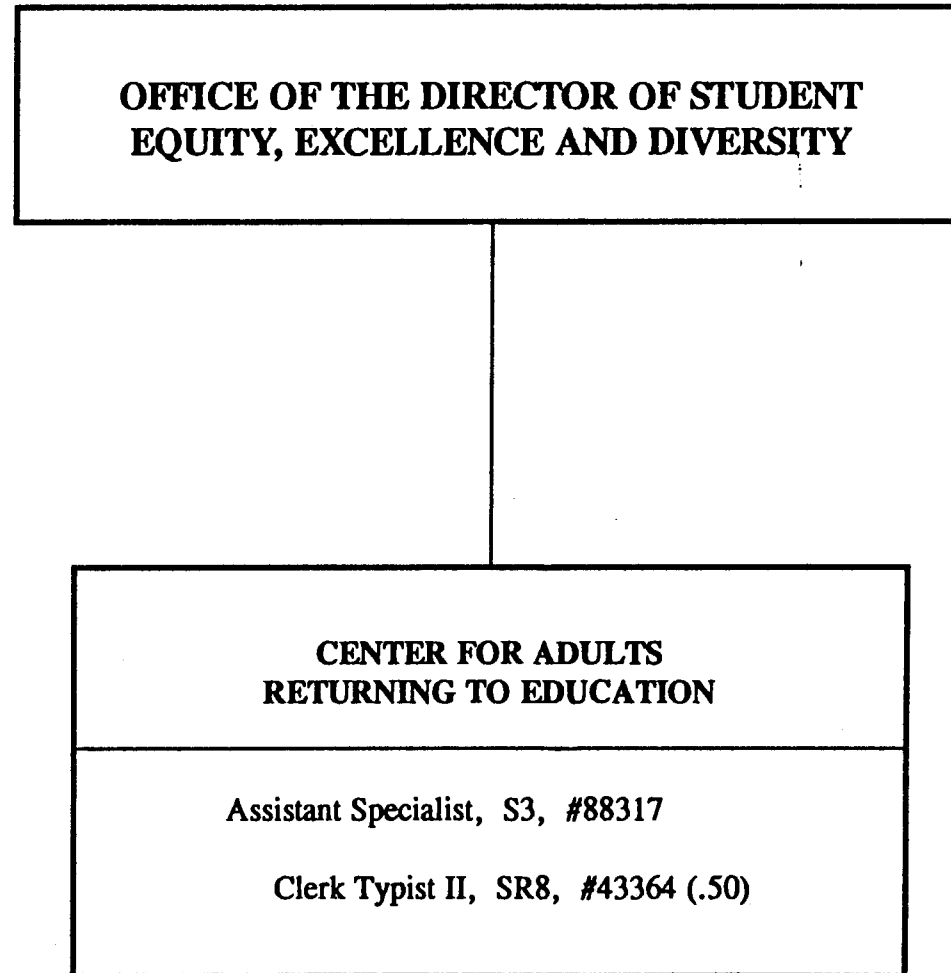
  
PAUL YUEN  
INTERIM PRESIDENT/INTERIM CHANCELLOR

DATE SEP 18 1992

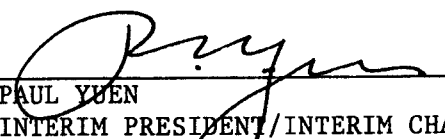
State of Hawai`i  
University of Hawai`i  
University of Hawai`i at Manoa

Office: UHM Student Services  
Center for Adults  
Returning to Education

Chart: IV-O  
[PROPOSED]



APPROVED PURSUANT TO BOR ACTION

  
PAUL YUEN  
INTERIM PRESIDENT/INTERIM CHANCELLOR

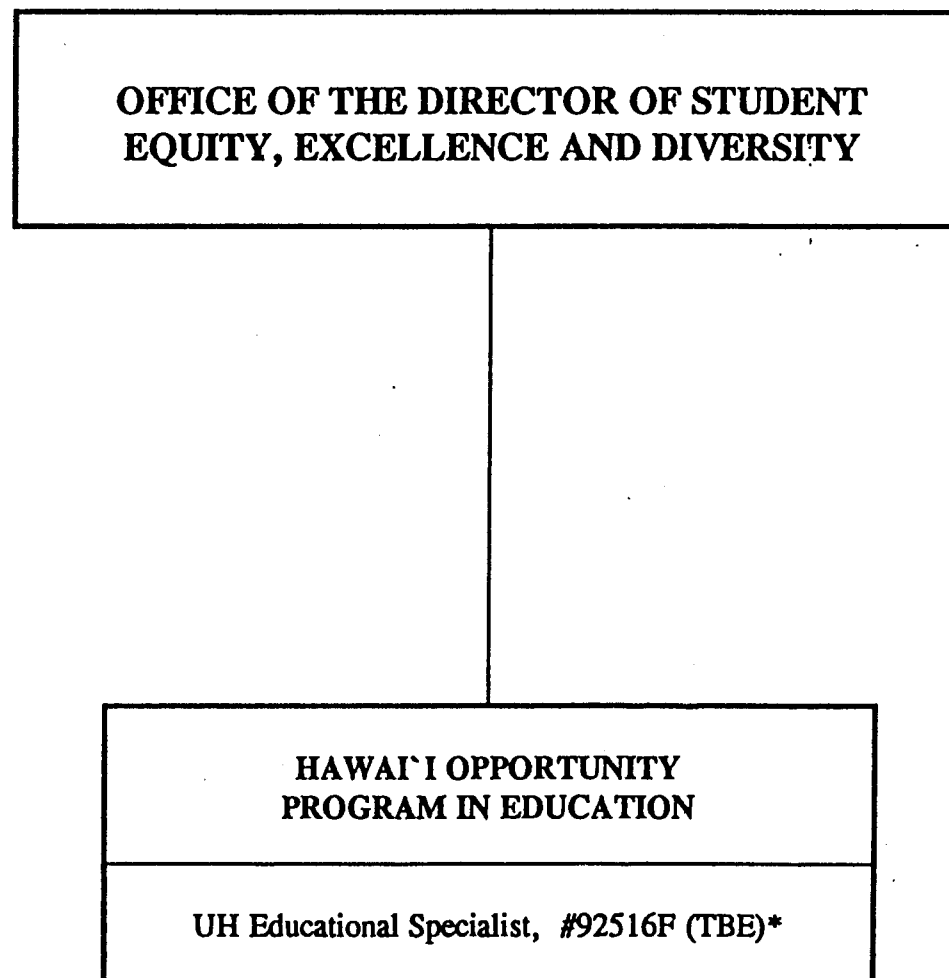
DATE SEP 18 1992



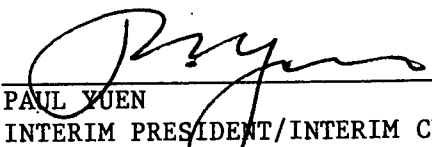
State of Hawai`i  
University of Hawai`i  
University of Hawai`i at Manoa

Office: UHM Student Services  
Hawai`i Opportunity  
Program in Education

Chart: IV-P  
[PROPOSED]



APPROVED PURSUANT TO BOR ACTION

  
PAUL YUEN  
INTERIM PRESIDENT/INTERIM CHANCELLOR

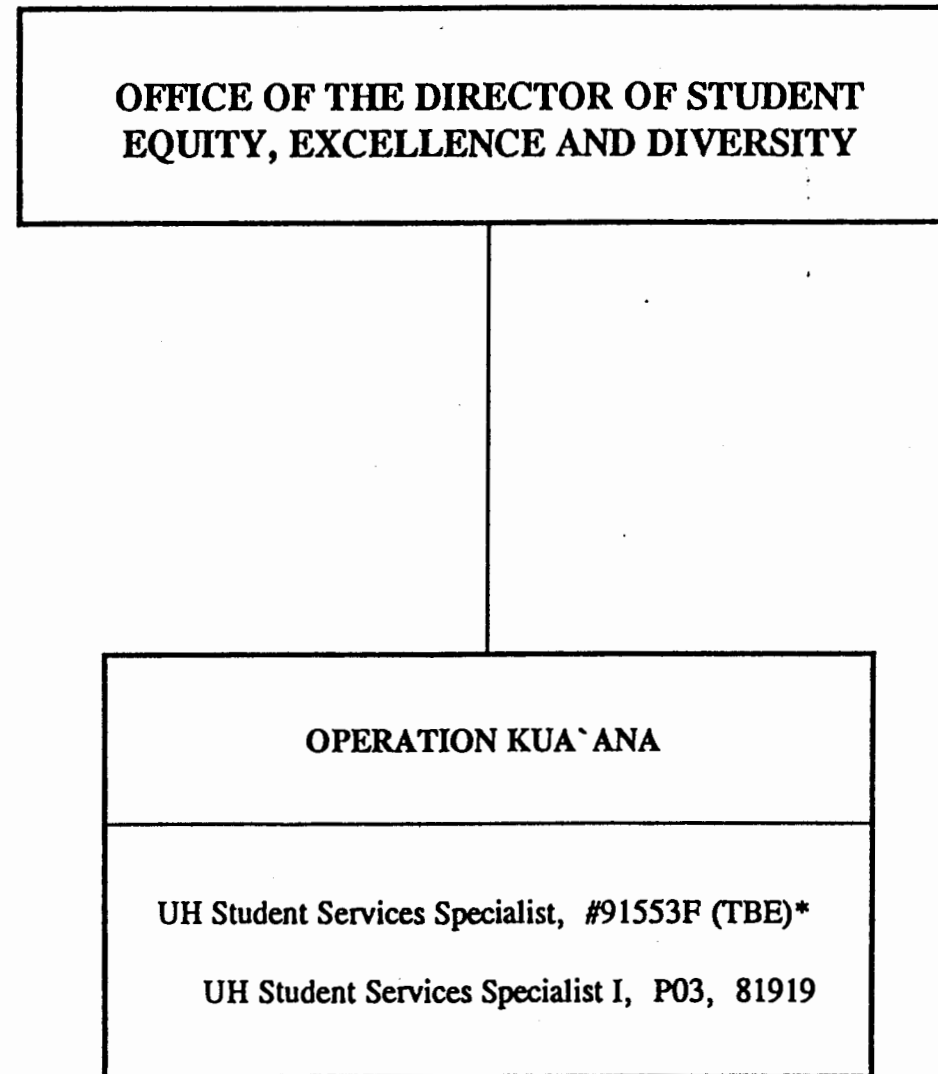
DATE SEP 18 1992

\* To Be Established

State of Hawai`i  
University of Hawai`i  
University of Hawai`i at Manoa

Office: UHM Student Services  
Operation Kua`ana

Chart: IV-Q  
[PROPOSED]



APPROVED PURSUANT TO BOR ACTION

  
PAUL YUEN  
INTERIM PRESIDENT/INTERIM CHANCELLOR

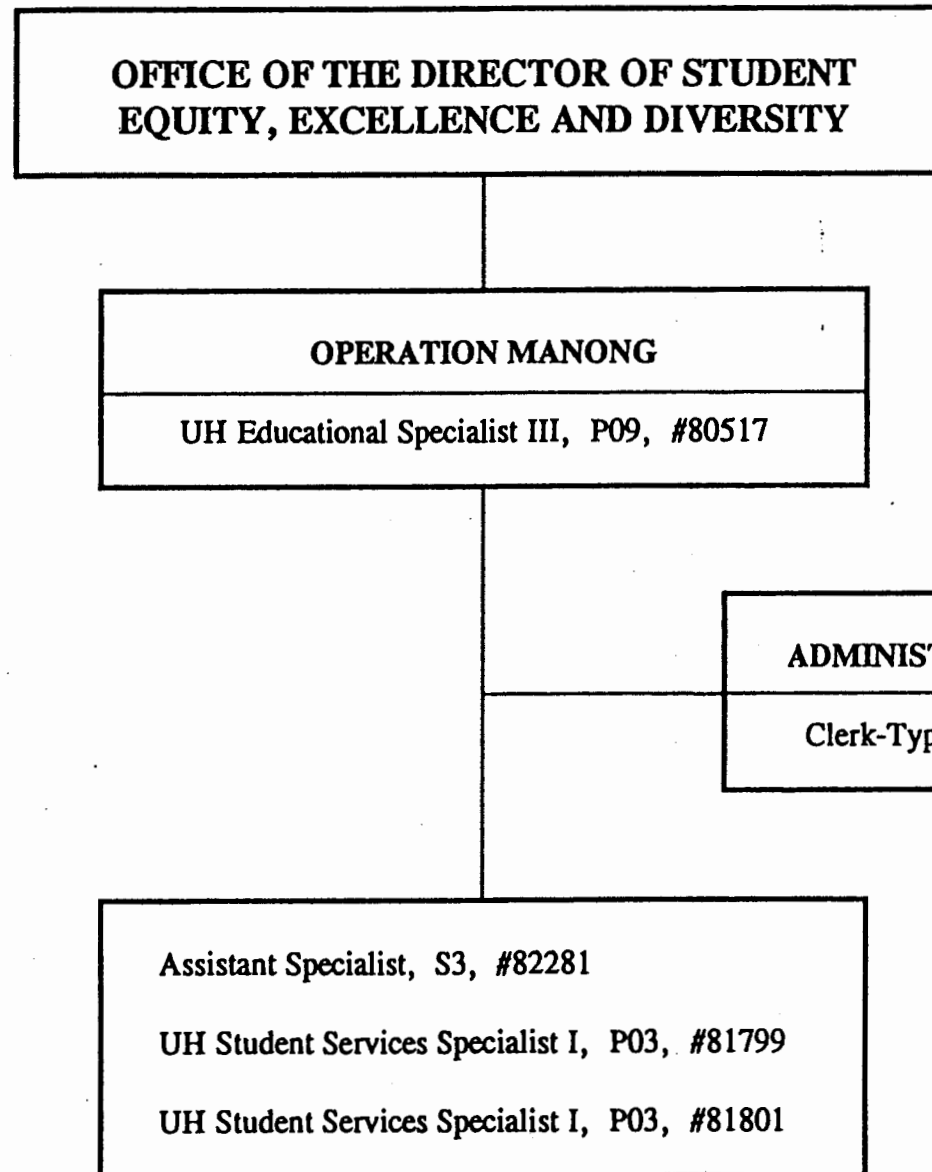
DATE SEP 18 1992

\* To Be Established. Also For #91553F Requesting Variance To UH Educational Specialist

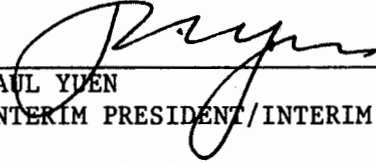
State of Hawai`i  
University of Hawai`i  
University of Hawai`i at Manoa

Office: UHM Student Services  
Operation Manong

Chart: IV-R  
[PROPOSED]



APPROVED PURSUANT TO BOR ACTION

  
PAUL YUEN  
INTERIM PRESIDENT/INTERIM CHANCELLOR

DATE SEP 18 1992

**OFFICE OF THE DIRECTOR OF STUDENT  
EQUITY, EXCELLENCE AND DIVERSITY**

**KOKUA PROGRAM**

Educational Specialist III, P09, #80666

Educational Specialist I, P03, #80636

Educational Specialist I, P03, #80608

Educational Specialist II, P06, #81566

Clerk IV, SR10, #90014F\*

State of Hawai`i  
University of Hawai`i  
University of Hawai`i at Manoa

Office: UHM Student Services  
KOKUA Program

Chart IV-S<sub>1</sub>  
[PROPOSED]

APPROVED PURSUANT TO BOR ACTION

  
PAUL YUEN  
INTERIM PRESIDENT/INTERIM CHANCELLOR

DATE SEP 18 1992

\*To Be Established

ATTACHMENT A

State of Hawai'i  
University of Hawai'i  
University of Hawai'i at Manoa

Office: UHM Student Services

Chart: IV  
[CURRENT]

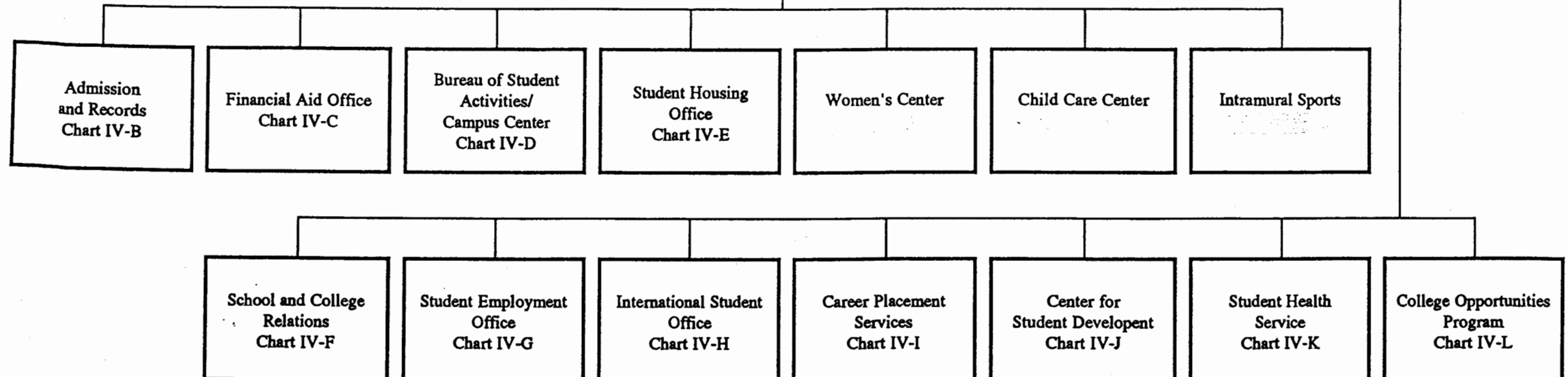
OFFICE OF THE VICE PRESIDENT FOR STUDENT AFFAIRS  
Chart IV-A

ADMINISTRATIVE OFFICE  
Chart IV-A

OFFICE OF THE DEAN OF  
STUDENT SERVICES (UHM)  
Chart IV-A

CHART UPDATED

DATE JUN 30 1992



SUPERSEDED  
Reorg. 9/18/92

OFFICE OF THE VICE PRESIDENT FOR STUDENT AFFAIRS

Vice President for Student Affairs, M13, #89103

Private Secretary II, SR22, #37046  
Special Assistant to the Vice President, M6, #89309  
Secretary II, SR14, #44996  
UH Institutional Analyst II, P10, #81734  
Associate Specialist, S4, #88318  
Director of Minority Students, M6, #89298  
UH Educational Specialist, #91529F (TBE)\*  
UH Student Services Specialist, #91553F (TBE)\*  
UH Student Services Specialist I, P03, #81919  
UH Educational Sp, #92516F (TBE)\*

ADMINISTRATIVE (FISCAL) OFFICE

UH Administrative Officer VI, P13, #80146  
Account Clerk III, SR11, #21426  
Personnel Clerk III, SR9, #44556  
UH Personnel Officer II, P05, #81879

DEAN'S OFFICE

Dean of Student Services (UHM), M9, #89133  
Secretary III, SR16, #00745  
Assistant Specialist, S3, #82635

ATTACHMENT B

State of Hawai'i  
University of Hawai'i  
University of Hawai'i at Manoa

Office: UHM Student Services

Chart: IV-A  
[CURRENT]

\* To Be Established  
UH Educational Sp, #91529F, #92516F  
UH Student Serv Sp, #91553F

**CHART UPDATED**  
DATE JUN 30 1992

# OFFICE OF THE VICE PRESIDENT FOR STUDENT AFFAIRS

State of Hawai`i  
University of Hawai`i  
University of Hawai`i at Manoa

Office: UHM Student Services  
Admissions and Records

Chart: IV-B  
[CURRENT]

SUPERSEDED  
Reorg. 9/18/92

## ADMISSIONS AND RECORDS

Specialist, S5, #82701

Secretary II, SR14, #00751  
Specialist, S5, #83776  
Secretary I, SR12, #14866  
Clerk Supervisor IV, SR16, #21429  
UH Student Services Specialist IV, P12, #81154 (.3)

## ADMISSIONS AND RESIDENCY

UH Student Services Specialist IV, P12, #81154 (.7)  
Clerk Supervisor III, SR14, #00748  
Clerk IV, SR10, #00772, #12550  
#12842, #12843  
#13495, #13496  
#18009, #21427  
UH Student Services Specialist III, P09, #80626  
UH Student Services Specialist III, P09, #81414  
UH Student Services Specialist II, P09, #80625  
Clerk IV, SR10, #11496  
Clerk IV, SR10, #26538

## RECORDS AND REGISTRATION

UH Student Services Specialist IV, P12, #81614  
UH Student Services Specialist III, P09, #80658  
Clerk Supervisor III, SR14, #17447  
Clerk IV, SR10, #00750, #13959  
#14863, #14864  
#14865, #15502  
#17450, #18010  
#18011, #21430  
Clerk III, SR8, #13494  
Clerk III, SR8, #26539  
Clerk Typist II, SR8, #40006  
Scheduler, SR20, #05837

## INFORMATION AND COMPUTER SERVICES

UH Student Services Specialist III, P09, #81070  
UH Data Processing Coordinator, P05, #80017  
UH Student Services Specialist I, P03, #81071  
Clerk Supervisor II, SR12, #22322  
Clerk IV, SR10, #40004  
Clerk IV, SR10, #40005  
Clerk-Stenographer II, SR9, #22321  
Clerk III, SR8, #15501  
Clerk III, SR8, #40003  
UH Computer Specialist I, P03, #80018

**CHART UPDATED**

DATE JUN 30 1992

OFFICE OF THE VICE PRESIDENT FOR STUDENT AFFAIRS

State of Hawai'i  
University of Hawai'i  
University of Hawai'i at Manoa

Office: UHM Student Services  
Financial Aid Office

Chart: IV-C  
[CURRENT]

SUPERSEDED

Reorg. 9/18/92

FINANCIAL AID OFFICE

Director of Financial Aid, M4, #89184

Secretary II, SR14, #05737

PROGRAM SPECIALISTS

UH Student Services Specialist II, P06, #81608  
UH Student Services Specialist II, P06, #81607  
UH Student Services Specialist II, P06, #81606  
UH Student Services Specialist II, P06, #81609  
UH Student Services Specialist II, P06, #81151  
UH Student Services Specialist II, P06, #80922

STAFF SPECIALIST

UH Student Services Specialist III, P09, #81913

DATA AND CLERICAL SUPPORT SECTION

Clerical Supervisor III, SR14, #17599  
Clerk-Typist III, SR10, #16967  
Clerk-Typist III, SR10, #15265  
Clerk-Typist III, SR10, #17600  
Clerk-Typist III, SR10, #10929  
Clerk III, SR8, #44397

**CHART UPDATED**

DATE JUN 30 1992



OFFICE OF THE VICE PRESIDENT FOR STUDENT AFFAIRS

State of Hawai'i  
University of Hawai'i  
University of Hawai'i at Manoa

Office: UHM Student Services  
Bureau of Student Activities  
Campus Center

Chart: IV-D  
[CURRENT]

SUPERSEDED  
Reorg. 9/18/92

BUREAU OF STUDENT ACTIVITIES

DIRECTOR  
M4, #89190

CLERICAL SUPPORT

Secretary II, SR14, #13587  
Clerk-Typist II, SR8, #28134 (R)  
Clerk-Typist II, SR8, #25699 (R)  
Clerk II, SR6, #25698 (R)

STUDENT LEADERSHIP DEVELOPMENT AND  
CO-CURRICULAR INTERVENTION PROGRAMS

Assistant Specialist, S3, #82864  
Assistant Specialist, S3, #83668  
Assistant Specialist, S3, #82573  
Assistant Specialist, S3, #82597  
UH Admin/Fiscal Support Specialist, P1, #81510 (R)  
UH Student Services Specialist II, P6, #81374 (R)  
Assistant Specialist, S3, #88334 (R)  
UH Admin/Fiscal Support Spec, P1, #81137 (R)  
UH Publication Specialist II, P7, #81186 (R)  
UH Student Services Sp II, P06, #80025(R)

OPERATIONAL PROGRAMS,  
FACILITIES AND SERVICES

UH Student Services Specialist III, P9, #80660 (R)  
Building Maintenance I, WB9, #28597 (R)  
Janitor II, WB2, #25329 (R)  
Janitor II, WB2, #25392 (R)  
Janitor II, WB2, #44089 (R)  
UH Student Services Specialist II, P6, #80631 (R)  
UH Educ/Acad Support Specialist, P1, #80942 (R)

ADMINISTRATIVE AND  
FISCAL SUPPORT

UH Administrative Officer III, P7, #80163 (R)  
UH Admin/Fiscal Support Specialist, P1, #80649 (R)  
Account Clerk III, SR11, #25700 (R)  
Account Clerk II, SR08, #45362(R)

Pending Establishment:

UH Student Services Sp, #92524F(R)

CHART UPDATED

DATE JUN 30 1992

Supersedes

9/18/92

OFFICE OF THE DEAN OF STUDENTS AND STUDENT SERVICES (UHM)

State of Hawai'i  
University of Hawai'i  
University of Hawai'i at Manoa

Office: UHM Student Services  
Student Housing Services

Chart: IV-E

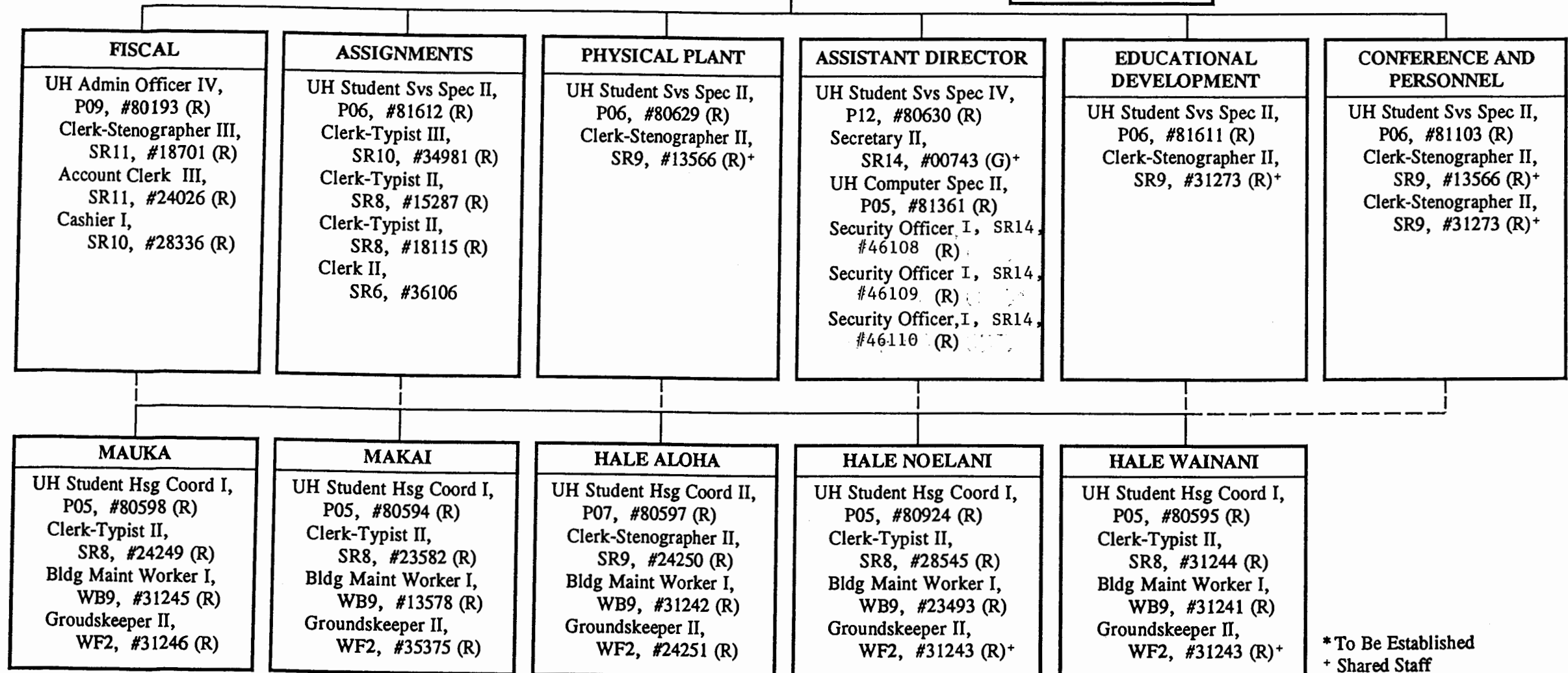
CHART UPDATED

DATE JUN 30 1992

STUDENT HOUSING SERVICES

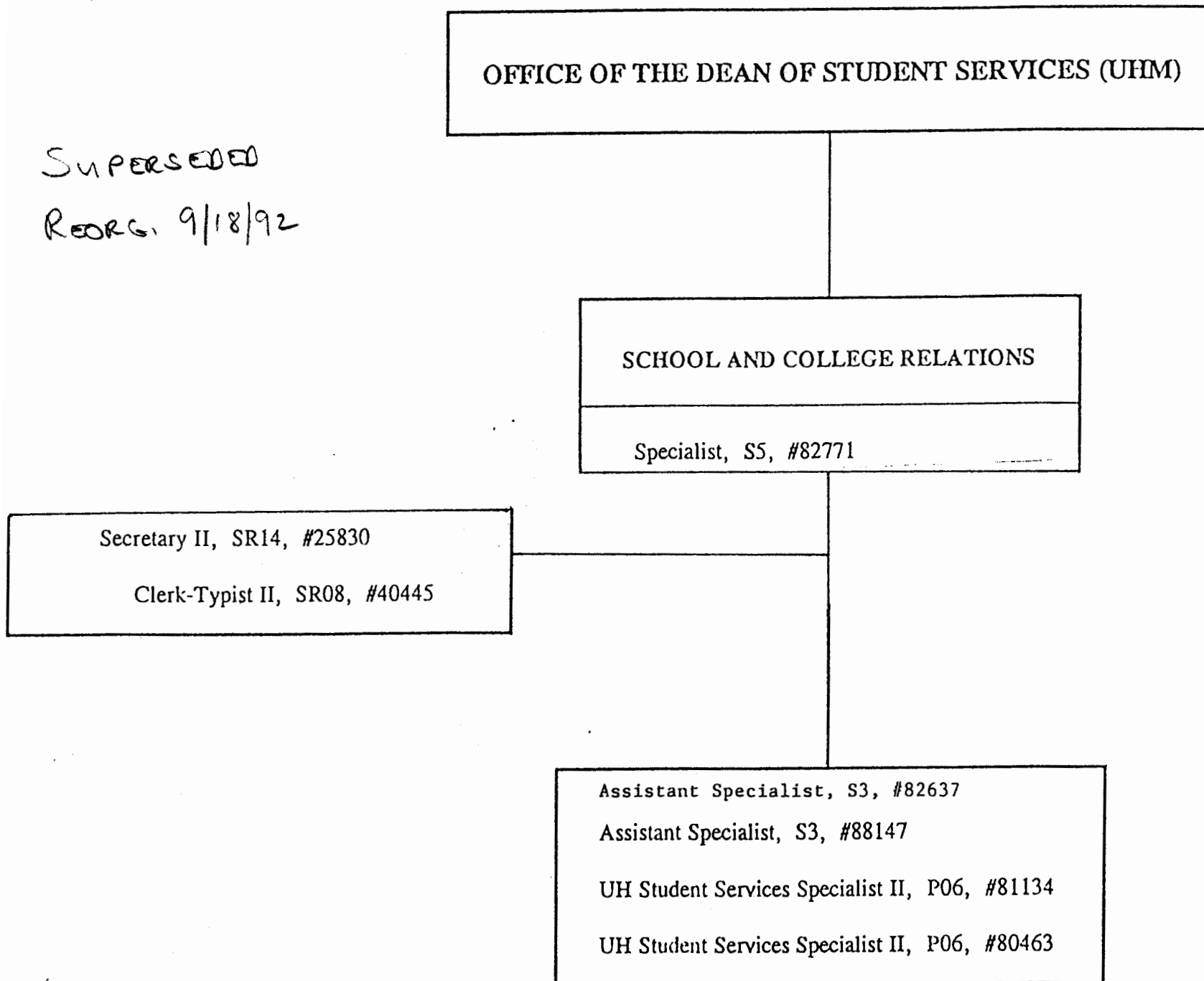
Director of Student Housing,  
M4, #89007 (G)

Secretary II,  
SR14, #00743 (G)+



\* To Be Established  
+ Shared Staff

SUPERSEDED  
REORG. 9/18/92



State of Hawai`i  
University of Hawai`i  
University of Hawai`i at Manoa

Office: UHM Student Services  
School and College Relations

Chart: IV-F  
[CURRENT]

**CHART UPDATED**  
DATE JUN 30 1992

Superseded  
9/18/92

OFFICE OF THE DEAN OF STUDENT SERVICES (UHM)

STUDENT EMPLOYMENT

UH Student Services Specialist IV, P012, #80661

Secretary II, SR14, #11046

Clerk Typist II, SR08, #46550

UH Student Services Specialist II, P06, #81063

UH Student Services Sp I, P03, #81481

Junior Specialist, S2, #88117

Junior Specialist, S2, #88333S

UH Educational/Academic Support Specialist, P1, #80453S

State of Hawai`i  
University of Hawai`i  
University of Hawai`i at Manoa

Office: UHM Student Services  
Student Employment

Chart: IV-G  
[CURRENT]

Pending Establishment:

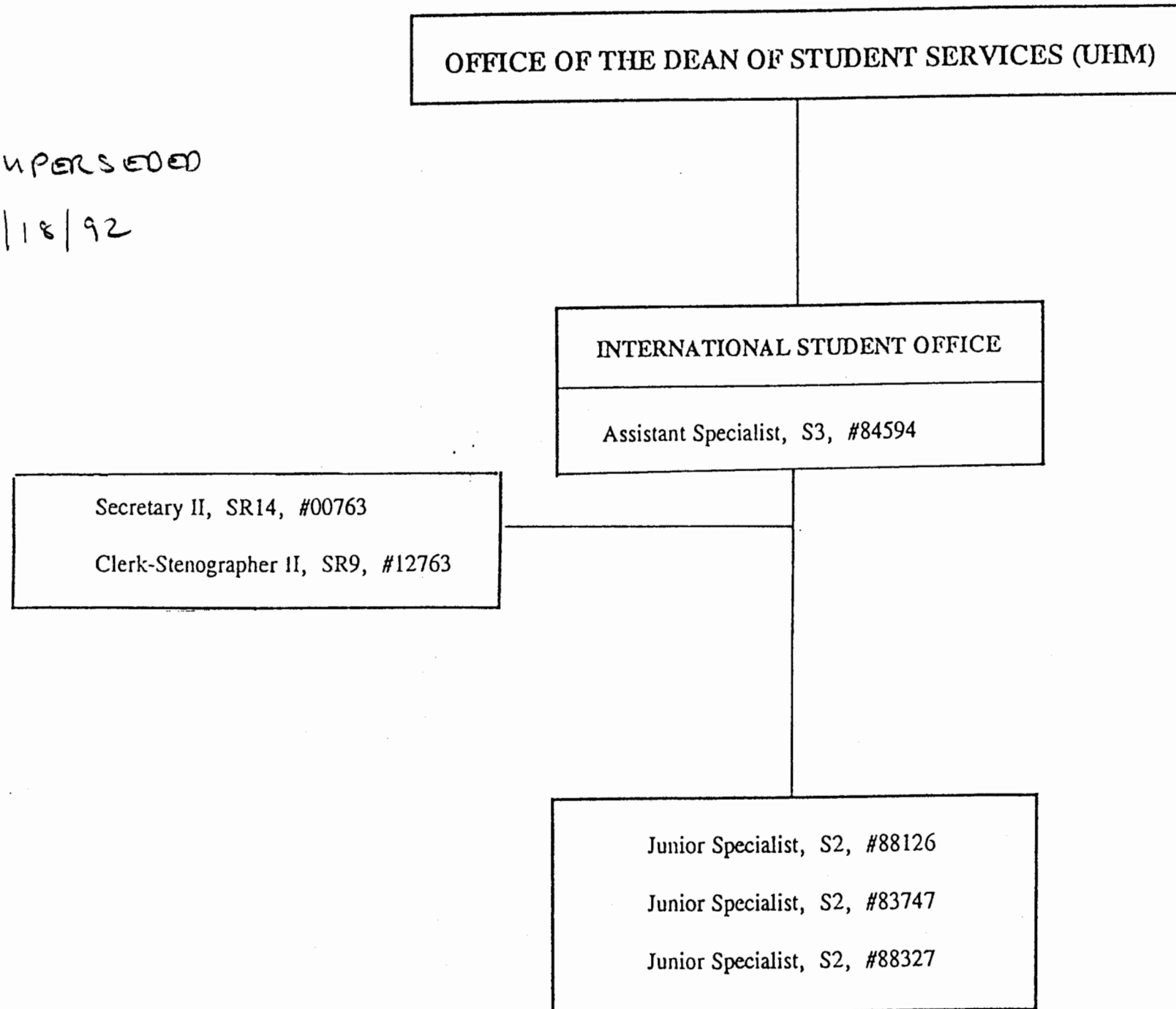
UH Student Services Specialist, #92573F

Graduate Assistant, #92575F

**CHART UPDATED**

DATE JUN 30 1992

SUPERSEDED  
9/18/92



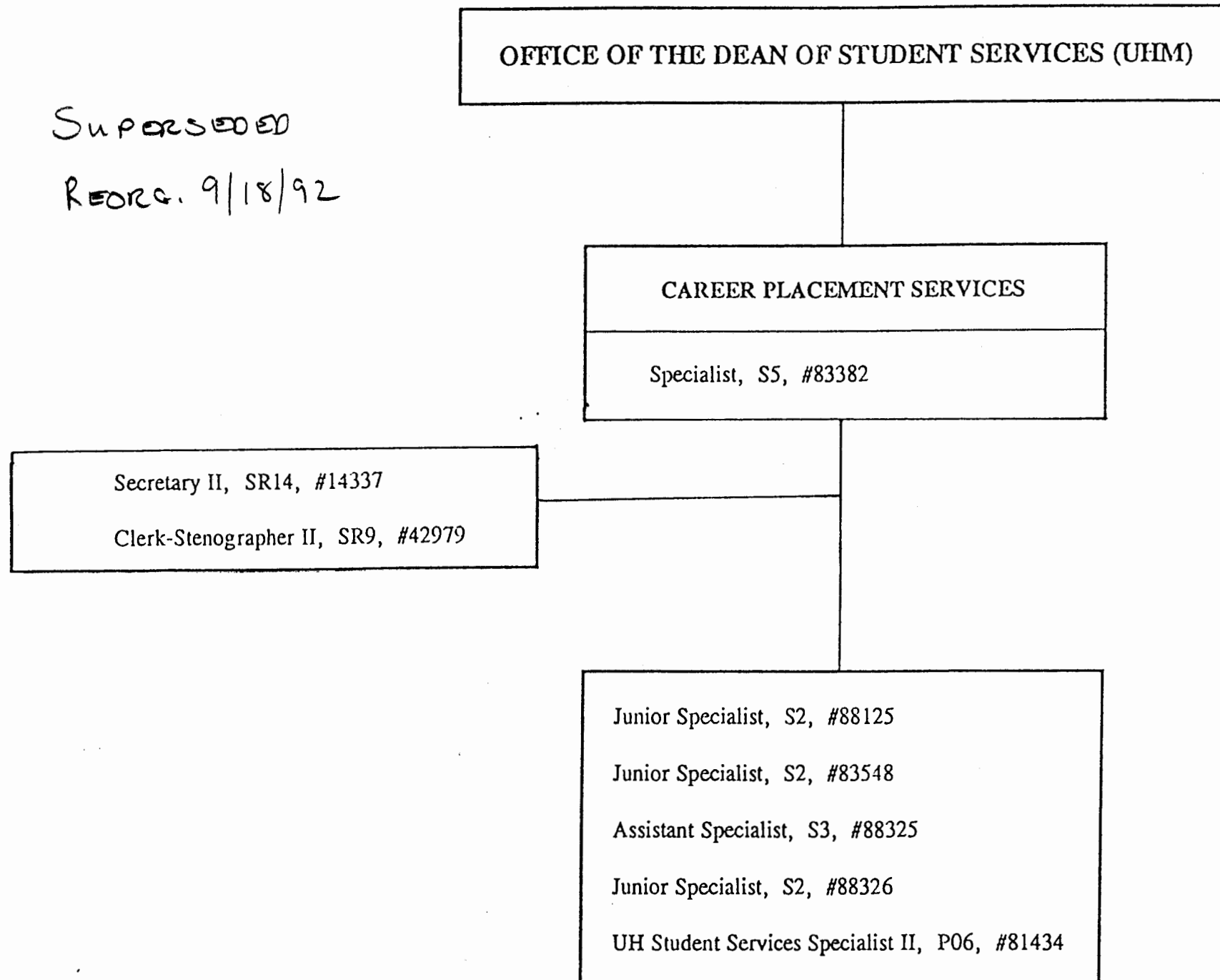
State of Hawai`i  
University of Hawai`i  
University of Hawai`i at Manoa

Office: UHM Student Services  
International Student Office

Chart: IV-H  
[CURRENT]

**CHART UPDATED**  
DATE JUN 30 1992

Superseded  
Reorg. 9/18/92



State of Hawai`i  
University of Hawai`i  
University of Hawai`i at Manoa

Office: UHM Student Services  
Career Placement Services

Chart: IV-I  
[CURRENT]

**CHART UPDATED**

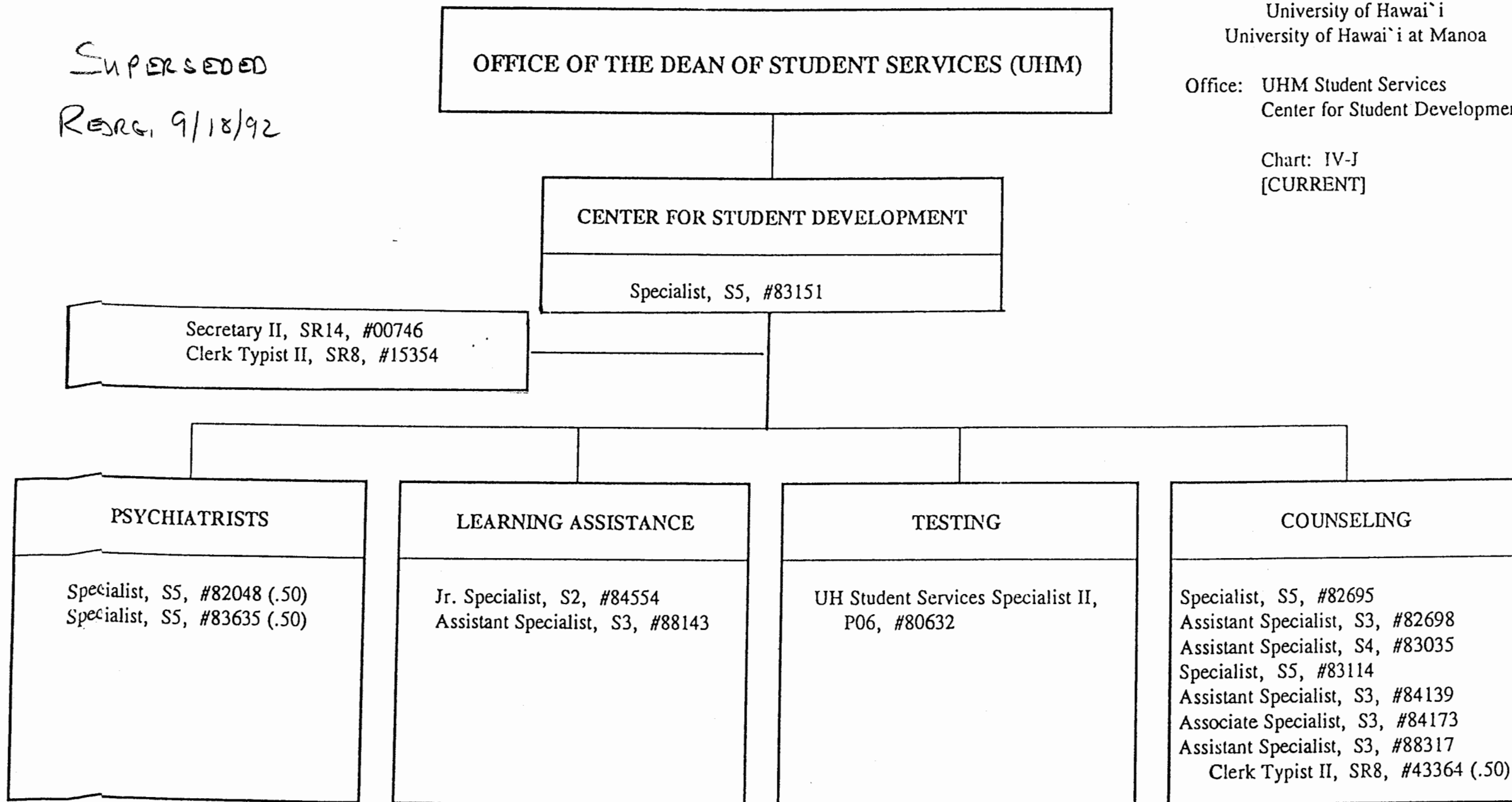
DATE JUN 30 1992

State of Hawai'i  
University of Hawai'i  
University of Hawai'i at Manoa

Office: UHM Student Services  
Center for Student Development

Chart: IV-J  
[CURRENT]

SUPERSEDED  
REORG. 9/18/92



**CHART UPDATED**

DATE JUN 30 1992

**OFFICE OF THE DEAN OF STUDENT SERVICES (UHM)**

**STUDENT HEALTH SERVICE**

Specialist, S5, #82341

**ADMINISTRATIVE SUPPORT**

Assistant Specialist, S3, #83539  
Secretary II, SR14, #15353  
Clerk-Stenographer II, SR9, #21512  
Medical Records Technician VI, SR13, #03723  
Clerk-Typist II, SR8, #35147 (.50)

**MEDICAL STAFF**

Specialist, S5, #84576 (.50)  
Specialist, S5, #84576A (.50)  
Specialist, S5, #83261 (.50)  
Specialist, S5, #83397 (.50)  
Specialist, S5, #84581 (.50)

**NURSING STAFF**

Registered Professional Nurse IV,  
SR22, #10312  
Registered Professional Nurse III,  
SR20, #13616  
Registered Professional Nurse III,  
SR20, #13614  
Registered Professional Nurse III,  
SR20, #22672  
Registered Professional Nurse III,  
SR20, #13615  
Registered Professional Nurse III,  
SR20, #18091  
Registered Professional Nurse III,  
SR20, #13730 (.50)

**FAMILY PLANNING CLINIC**

Registered Professional Nurse IV,  
SR22, #41706 (.50)

**LABORATORY**

UH Medical Technician,  
P07, #80671 (.50)

CHART UPDATED

DATE JUN 30 1992

Superseded

Reorg. 9/18/92



Office: UHM Student Services  
College Opportunities Program

Chart: IV-L  
[CURRENT]

SUPERSEDED  
Reorg. 9/18/92

OFFICE OF THE DEAN OF STUDENT SERVICES (UHM)

COLLEGE OPPORTUNITIES PROGRAM

UH Educational Specialist IV, P12, #80582

Secretary II, SR14, #23086

COLLEGE OPPORTUNITIES

UH Student Services Specialist II, P06, #80628  
UH Student Services Specialist II, P06, #81736 (.50)  
UH Student Services Specialist I, P03, #80606

OPERATION MANONG

Assoc. Specialist, S4, #82281  
UH Educational Specialist III, P09, #80517  
UH Student Services Specialist I, P03, #81799  
UH Student Services Specialist I, P03, #81801  
Clerk Typist II, SR8, #43052

**CHART UPDATED**

DATE **JUN 30 1992**