

UNIVERSITY OF HAWAII  
SENIOR VICE PRESIDENT AND  
CHANCELLOR FOR COMMUNITY COLLEGES

ORGANIZATION CHART

CHART I

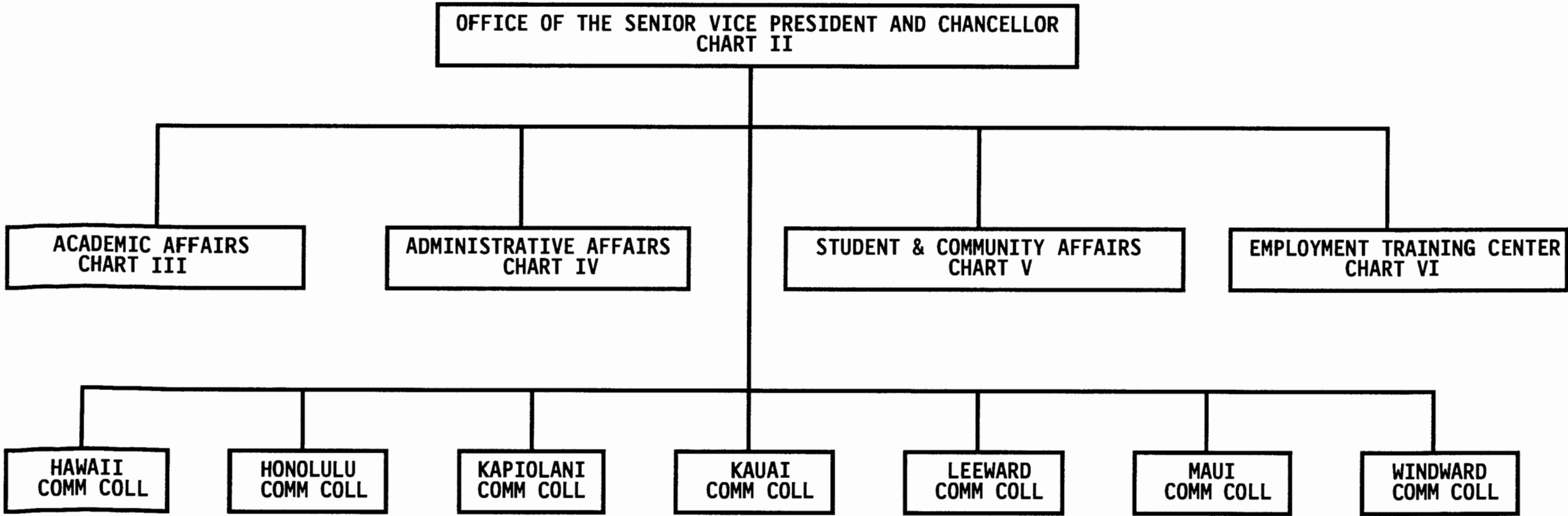
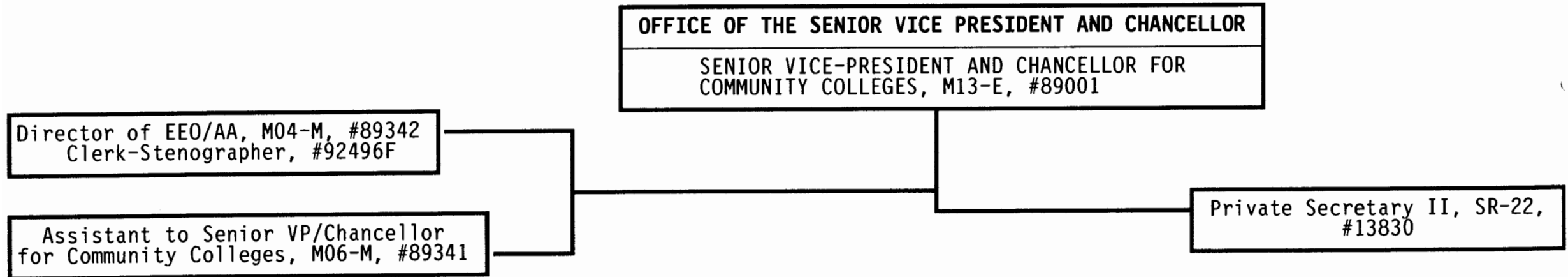


CHART UPDATED  
JUN 30 1993  
DATE \_\_\_\_\_

STATE OF HAWAII  
UNIVERSITY OF HAWAII  
SENIOR VICE PRESIDENT AND  
CHANCELLOR FOR COMMUNITY COLLEGES

POSITION ORGANIZATION CHART

CHART II



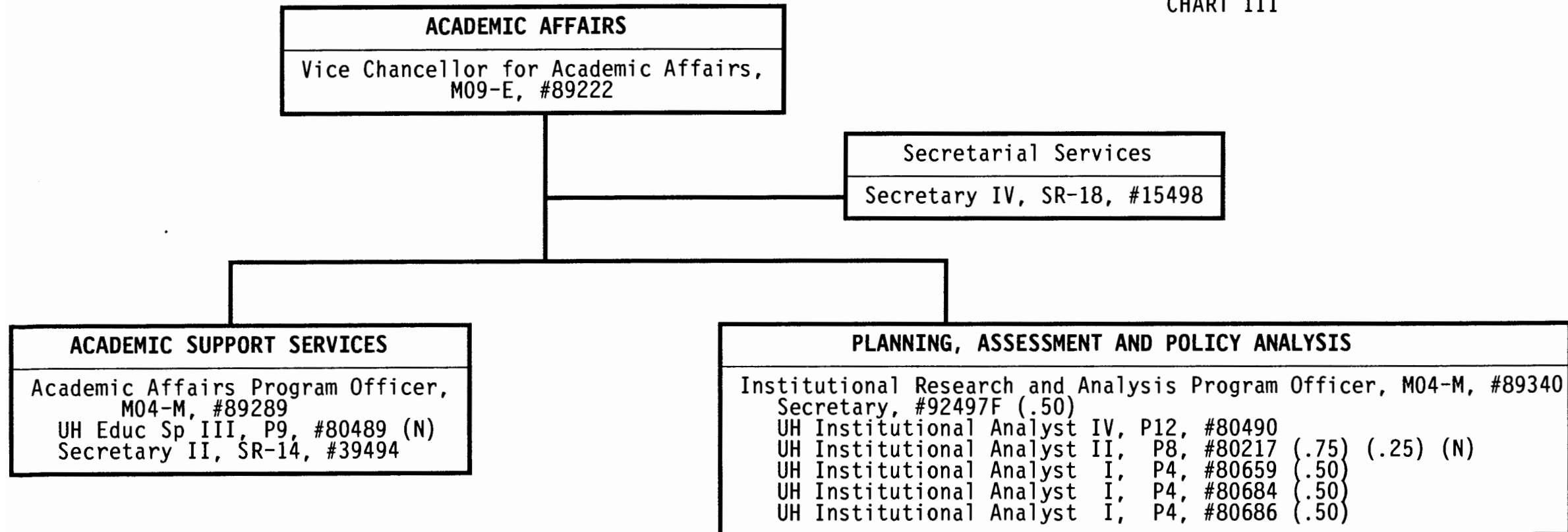
General Funds 5.00

CHART UPDATED  
DATE JUN 30 1993

STATE OF HAWAII  
UNIVERSITY OF HAWAII  
SENIOR VICE PRESIDENT AND  
CHANCELLOR FOR COMMUNITY COLLEGES

POSITION ORGANIZATION CHART

CHART III

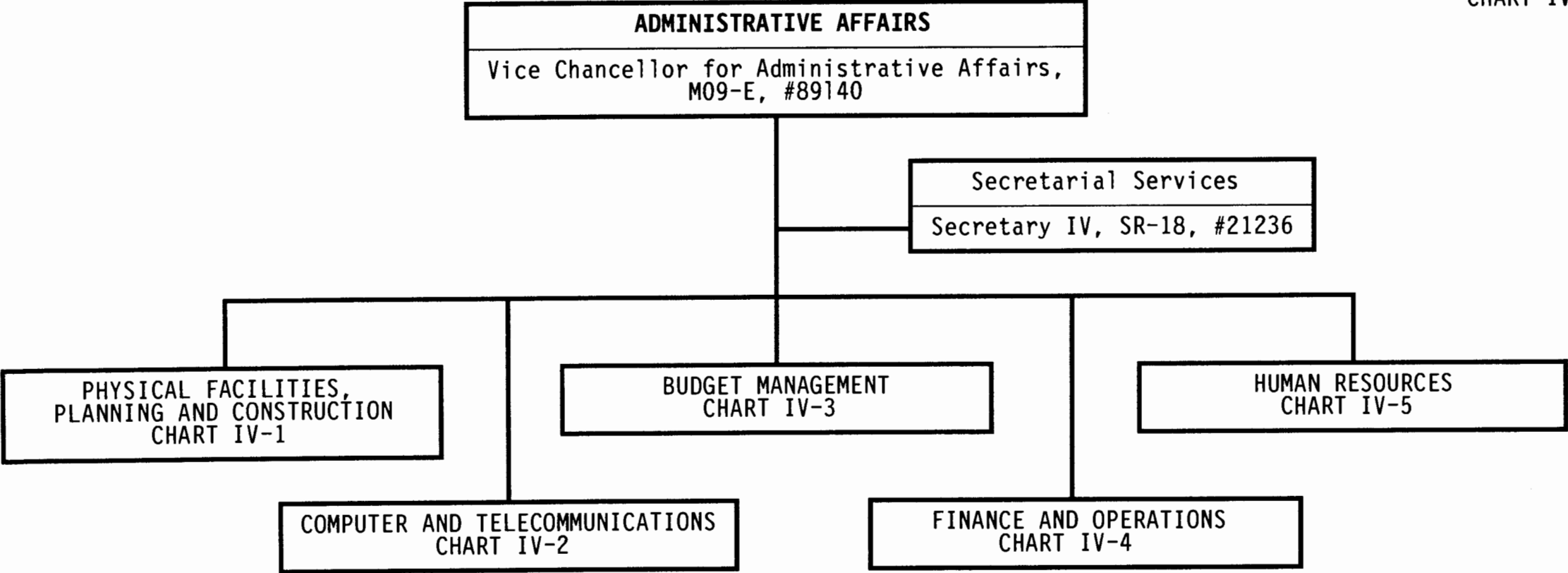


(N) General Funds 8.75  
Federal Funds 1.25

CHART UPDATED  
JUN 30 1993  
DATE \_\_\_\_\_

STATE OF HAWAII  
UNIVERSITY OF HAWAII  
SENIOR VICE PRESIDENT AND  
CHANCELLOR FOR COMMUNITY COLLEGES

POSITION ORGANIZATION CHART  
CHART IV



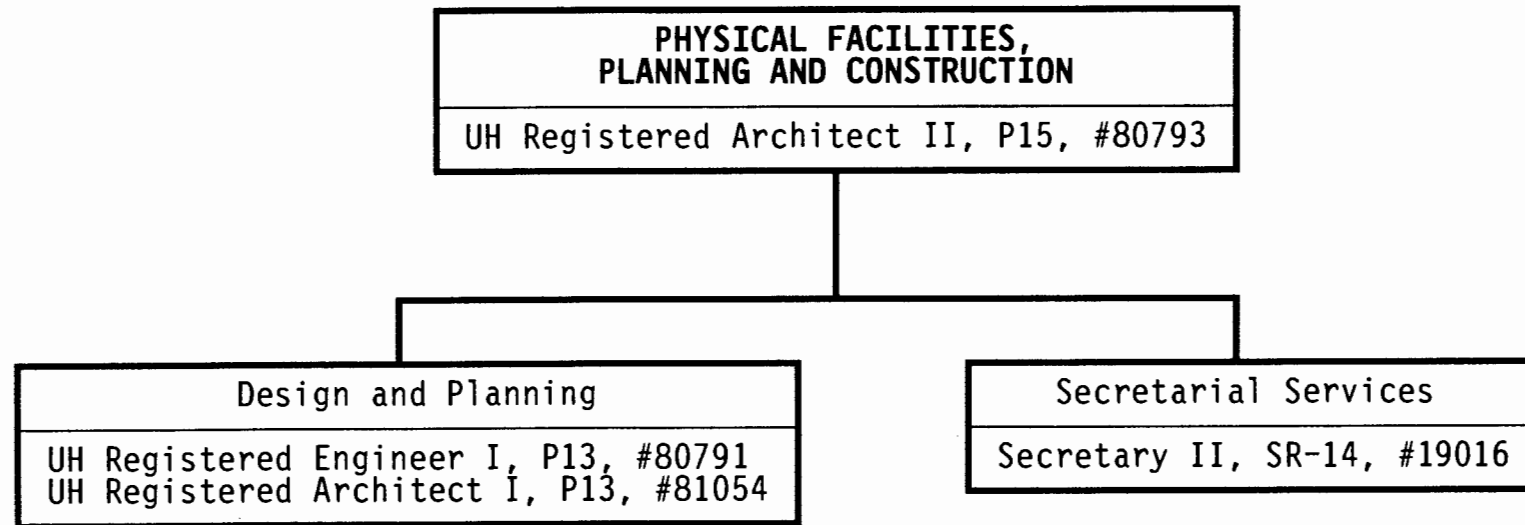
General Funds 2.00

CHART UPDATED  
DATE JUN 30 1993

STATE OF HAWAII  
UNIVERSITY OF HAWAII  
SENIOR VICE PRESIDENT AND  
CHANCELLOR FOR COMMUNITY COLLEGES

POSITION ORGANIZATION CHART

CHART IV-1



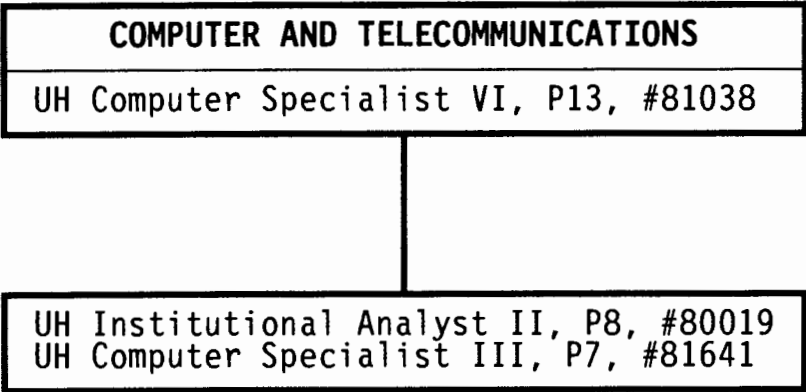
General Funds 4.00

CHART UPDATED  
JUN 30 1993  
DATE \_\_\_\_\_

STATE OF HAWAII  
UNIVERSITY OF HAWAII  
SENIOR VICE PRESIDENT AND  
CHANCELLOR FOR COMMUNITY COLLEGES

POSITION ORGANIZATION CHART

CHART IV-2



General Funds 3.00

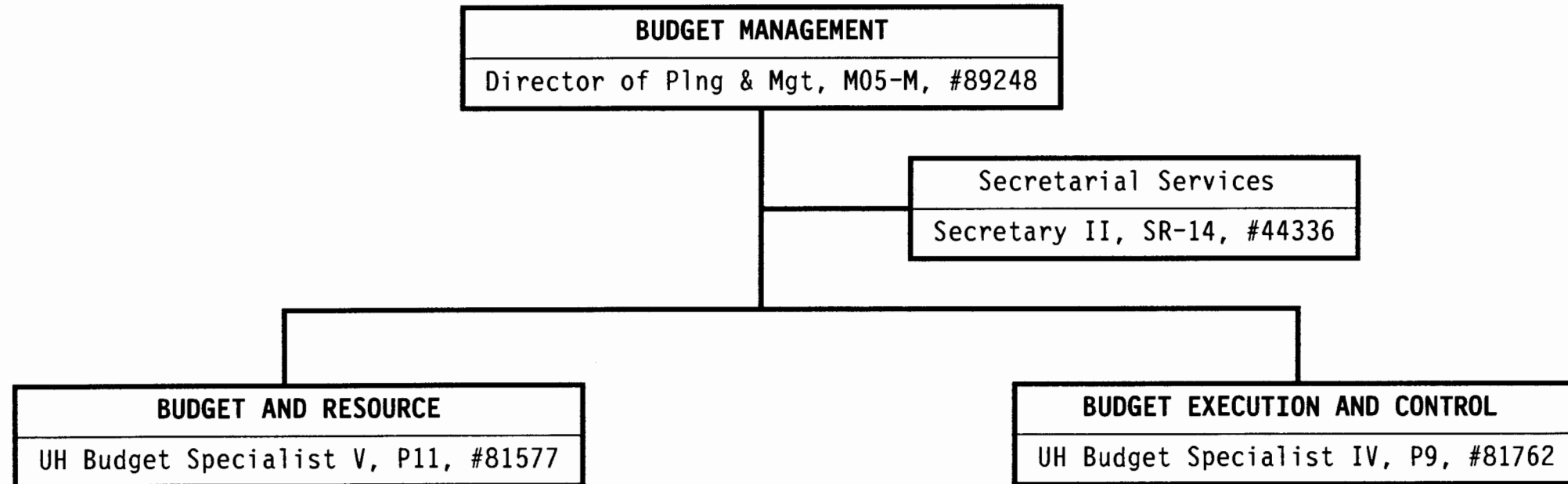
CHART UPDATED

DATE JUN 30 1993

STATE OF HAWAII  
UNIVERSITY OF HAWAII  
SENIOR VICE PRESIDENT AND  
CHANCELLOR FOR COMMUNITY COLLEGES

POSITION ORGANIZATION CHART

CHART IV-3



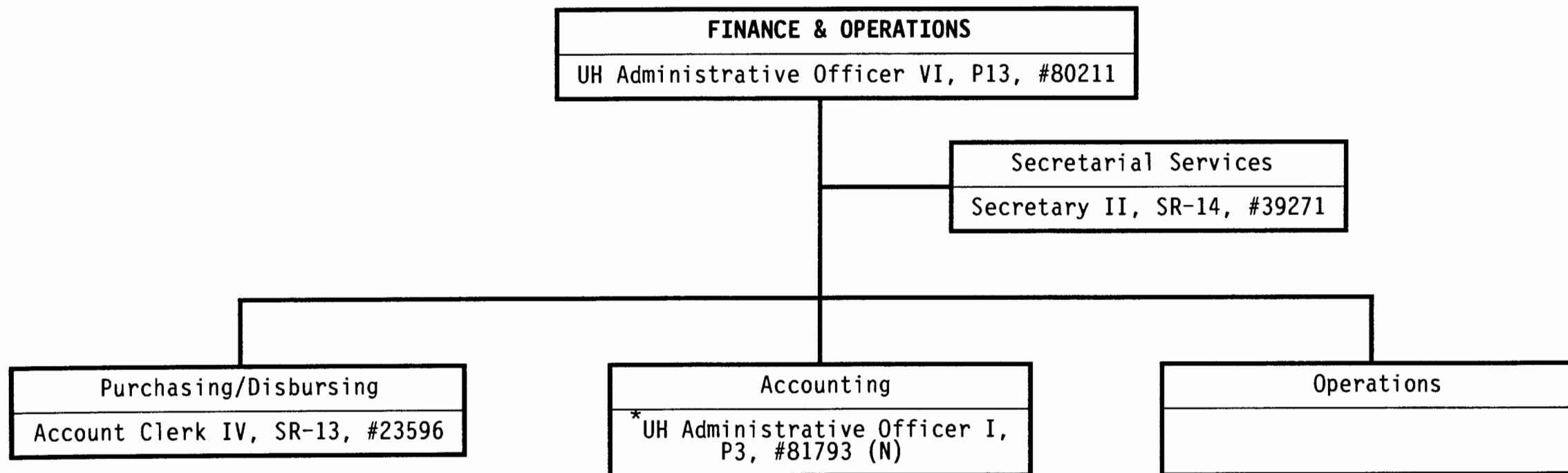
General Funds 4.00

CHART UPDATED  
DATE JUN 30 1993

STATE OF HAWAII  
UNIVERSITY OF HAWAII  
SENIOR VICE PRESIDENT AND  
CHANCELLOR FOR COMMUNITY COLLEGES

POSITION ORGANIZATION CHART

CHART IV-4



\* Temporary Position - Federal Funded

General Funds 3.00

CHART UPDATED

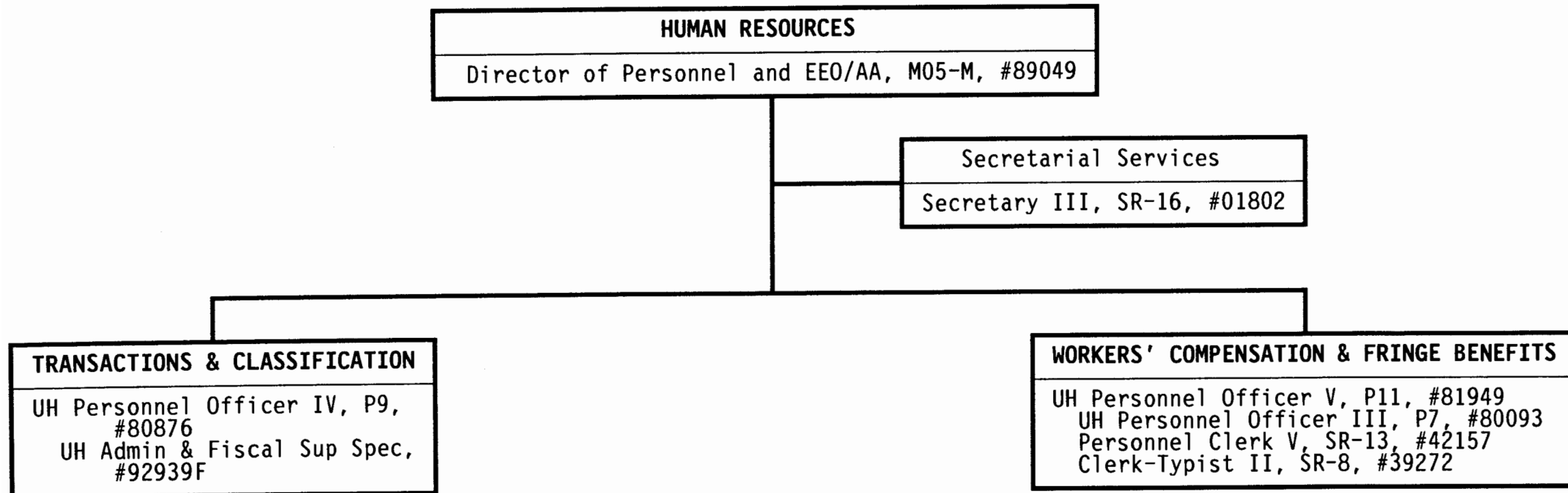
DATE JUN 30 1993



STATE OF HAWAII  
UNIVERSITY OF HAWAII  
SENIOR VICE PRESIDENT AND  
CHANCELLOR FOR COMMUNITY COLLEGES

POSITION ORGANIZATION CHART

CHART IV-5



General Funds 8.00

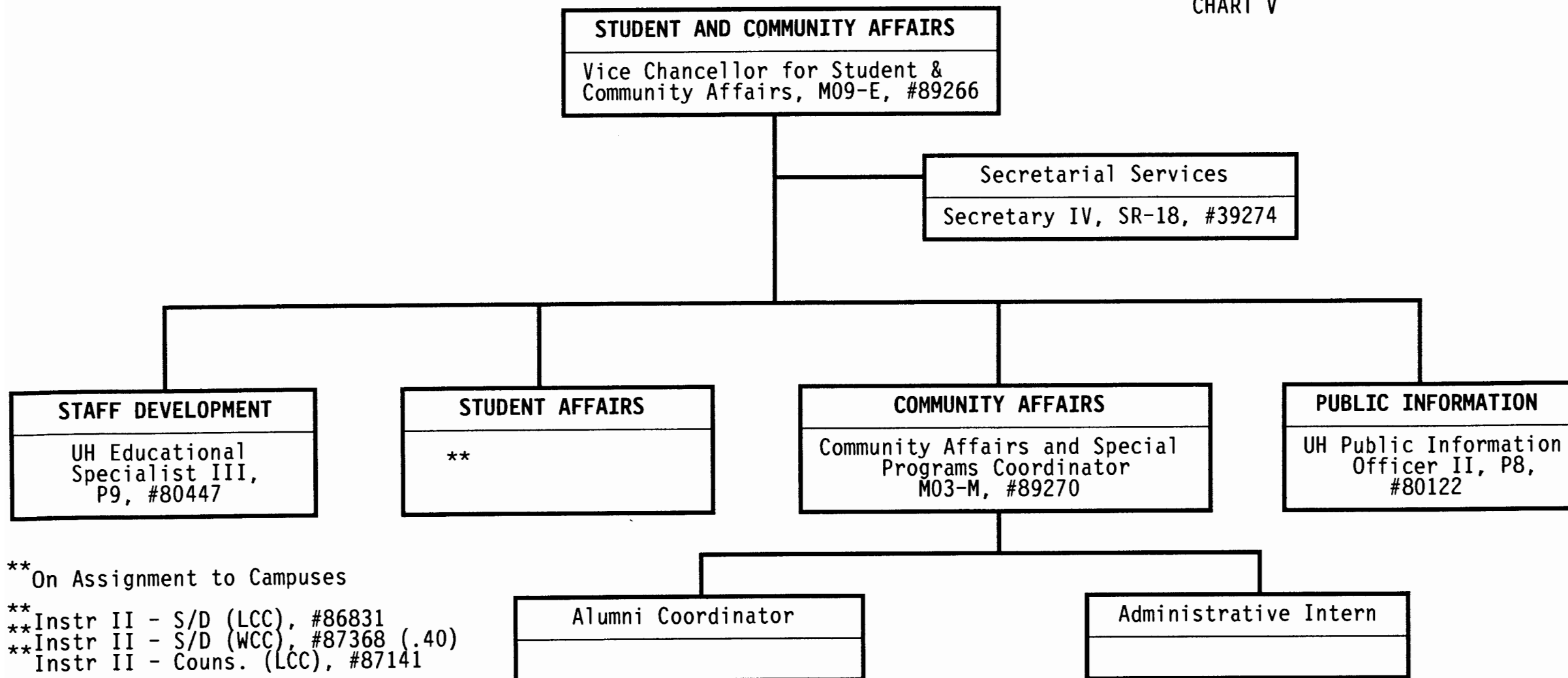
CHART UPDATED

DATE JUN 30 1993

STATE OF HAWAII  
UNIVERSITY OF HAWAII  
SENIOR VICE PRESIDENT AND  
CHANCELLOR FOR COMMUNITY COLLEGES

POSITION ORGANIZATION CHART

CHART V



\*\* On Assignment to Campuses

\*\* Instr II - S/D (LCC), #86831  
 \*\* Instr II - S/D (WCC), #87368 (.40)  
 \*\* Instr II - Couns. (LCC), #87141

General Funds 7.40

CHART UPDATED

DATE JUN 30 1993