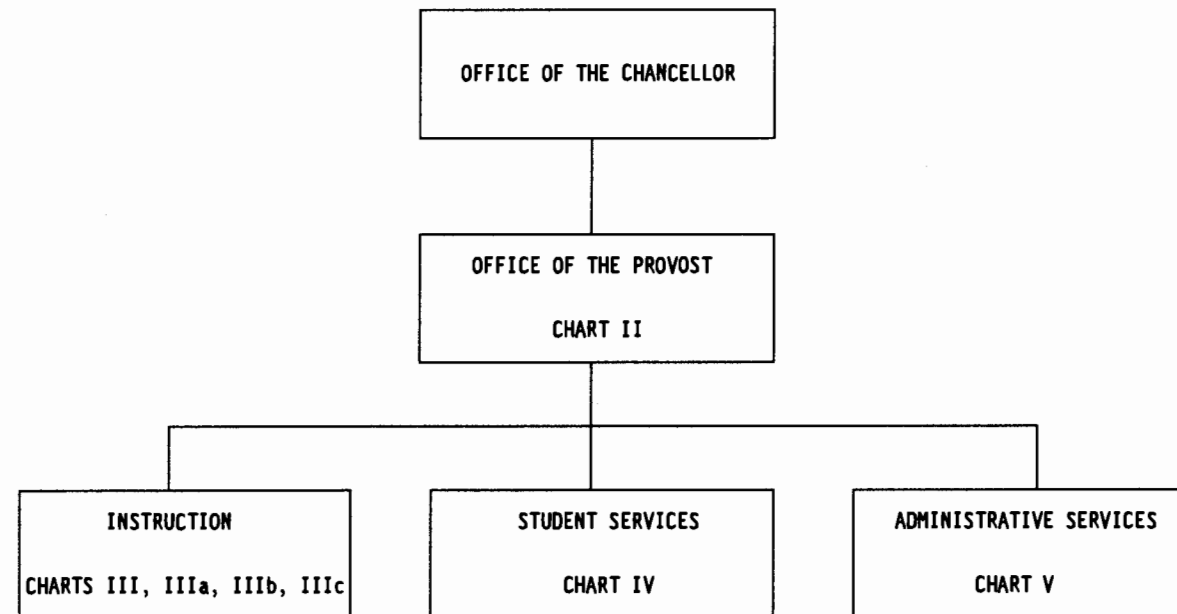


STATE OF HAWAII  
UNIVERSITY OF HAWAII  
HAWAII COMMUNITY COLLEGE

Position Organization  
Chart

Chart I



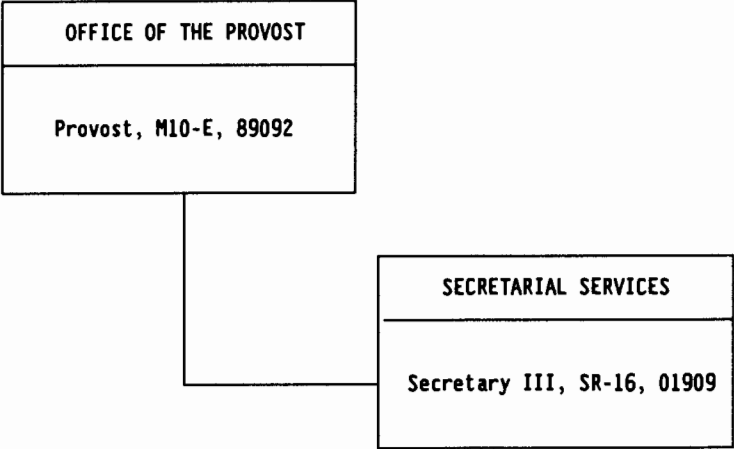
**CHART UPDATED**  
JUN 30 1993  
DATE \_\_\_\_\_

General Funds	101.50
Positions to be transferred	<u>19.00</u>
Total General Funds	120.50

STATE OF HAWAII  
UNIVERSITY OF HAWAII  
HAWAII COMMUNITY COLLEGE  
OFFICE OF THE PROVOST

Position Organization  
Chart

Chart II



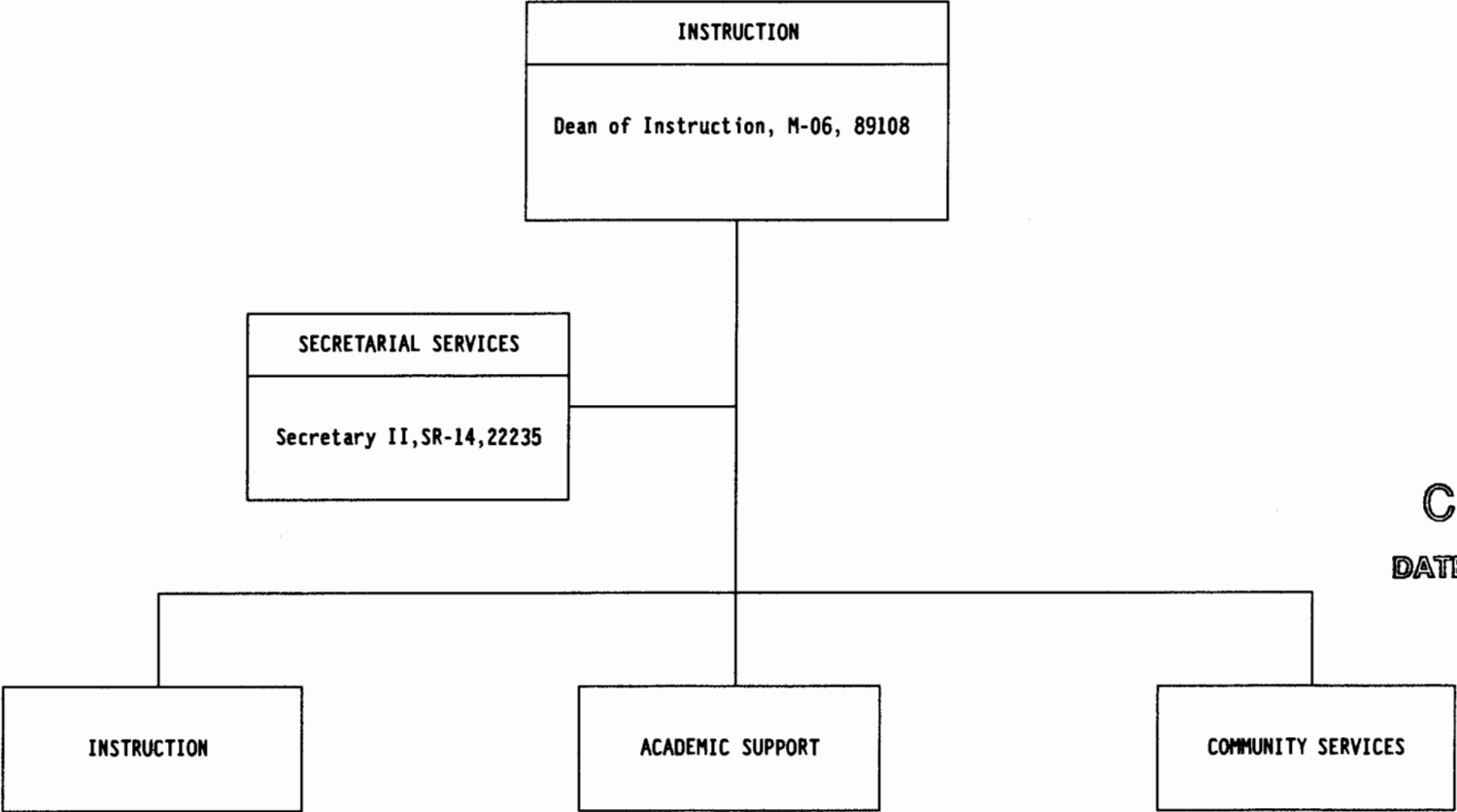
General Funds 2.00

CHART UPDATED  
JUN 30 1993  
DATE \_\_\_\_\_

STATE OF HAWAII  
UNIVERSITY OF HAWAII  
HAWAII COMMUNITY COLLEGE  
INSTRUCTION

Position Organization  
Chart

Chart III

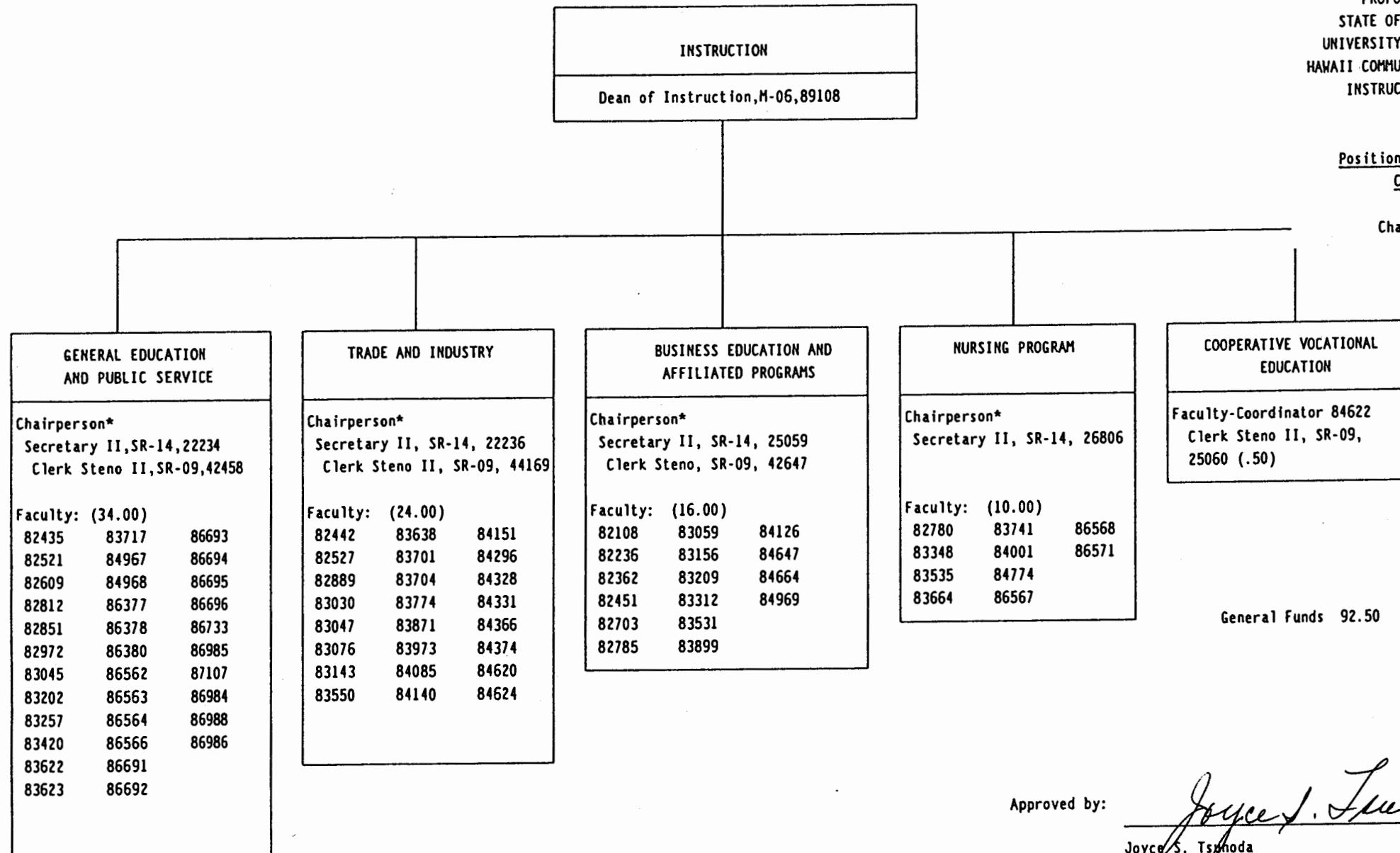


**CHART UPDATED**  
**DATE JUN 30 1993**

PROPOSED  
STATE OF HAWAII  
UNIVERSITY OF HAWAII  
HAWAII COMMUNITY COLLEGE  
INSTRUCTION

Position Organization  
Chart

Chart IIIa



General Funds 92.50

Approved by:

*Joyce S. Tsynoda*

Joyce S. Tsynoda

Title : Senior Vice President & Chancellor for Community Colleges

Date : March 17, 1994

\* Chairperson is appointed from among instructional positions within department.

SUPERSEDED 3/17/94

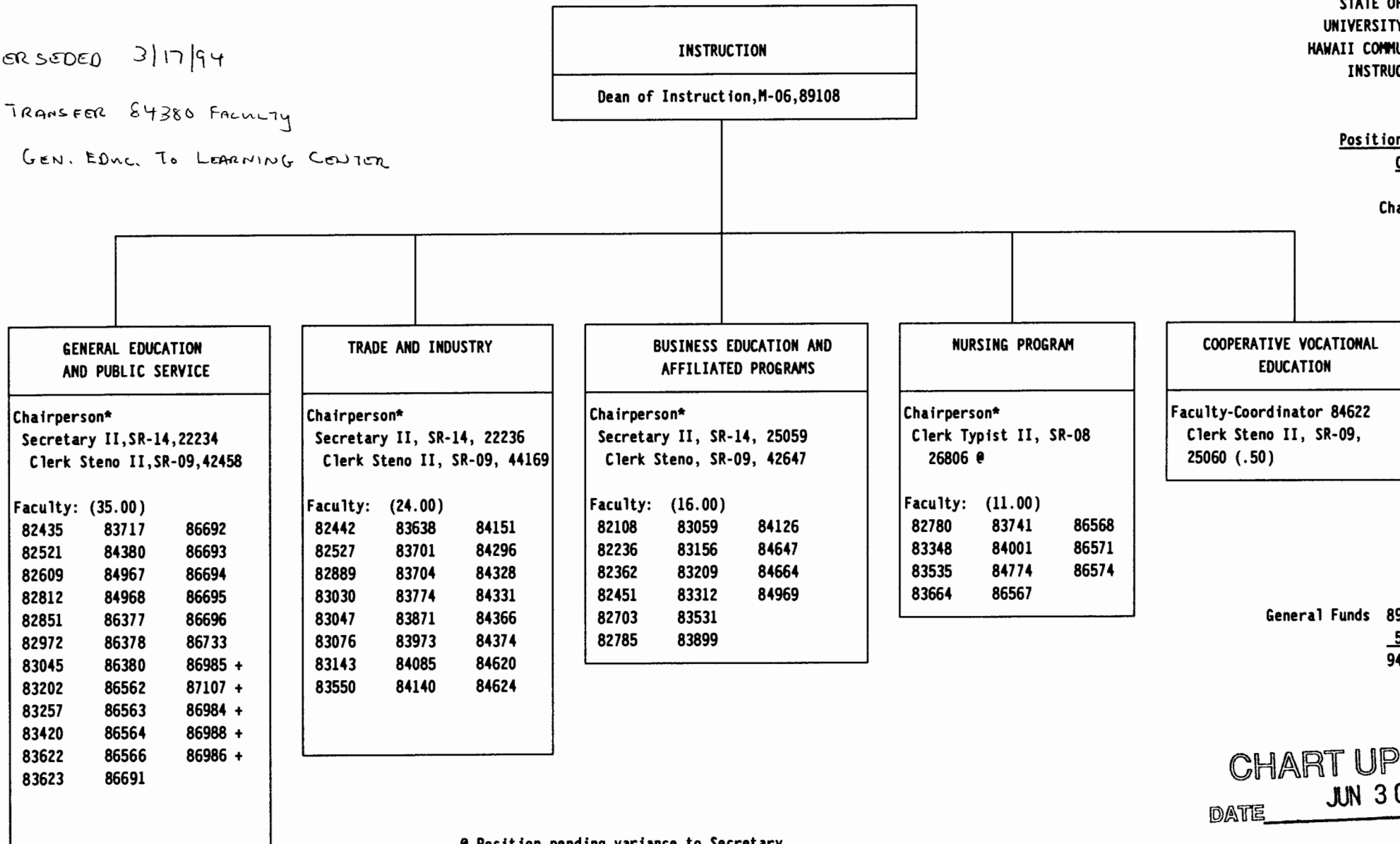
POL. TRANSFER 84380 FACULTY

FROM GEN. EDUC. TO LEARNING CENTER

STATE OF HAWAII  
UNIVERSITY OF HAWAII  
HAWAII COMMUNITY COLLEGE  
INSTRUCTION

Position Organization  
Chart

Chart IIIa



General Funds 89.50  
5.00 +  
94.50

CHART UPDATED  
JUN 30 1993  
DATE \_\_\_\_\_

@ Position pending variance to Secretary.

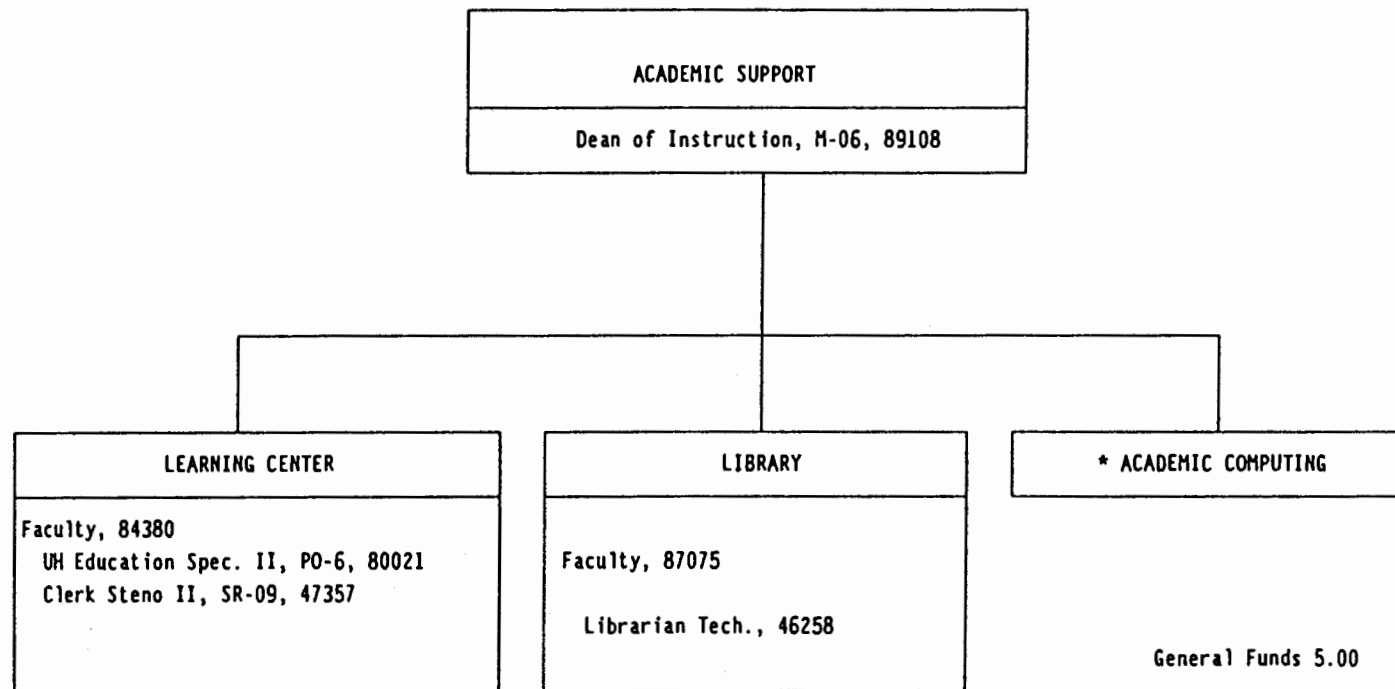
\* Chairperson is appointed from among instructional positions within department.

+ Position to be transferred to Hawaii CC from Community College Systemwide Support.

PROPOSED  
STATE OF HAWAII  
UNIVERSITY OF HAWAII  
HAWAII COMMUNITY COLLEGE  
ACADEMIC SUPPORT

Position Organization  
Chart

Chart IIIb



\* Duties to be performed on a rotating basis by existing faculty.

Approved by:

Joyce S. Tsunoda  
Joyce S. Tsunoda

Title : Senior Vice President & Chancellor for Community Colleges

Date : March 17, 1994

STATE OF HAWAII  
UNIVERSITY OF HAWAII  
HAWAII COMMUNITY COLLEGE  
ACADEMIC SUPPORT

Position Organization  
Chart

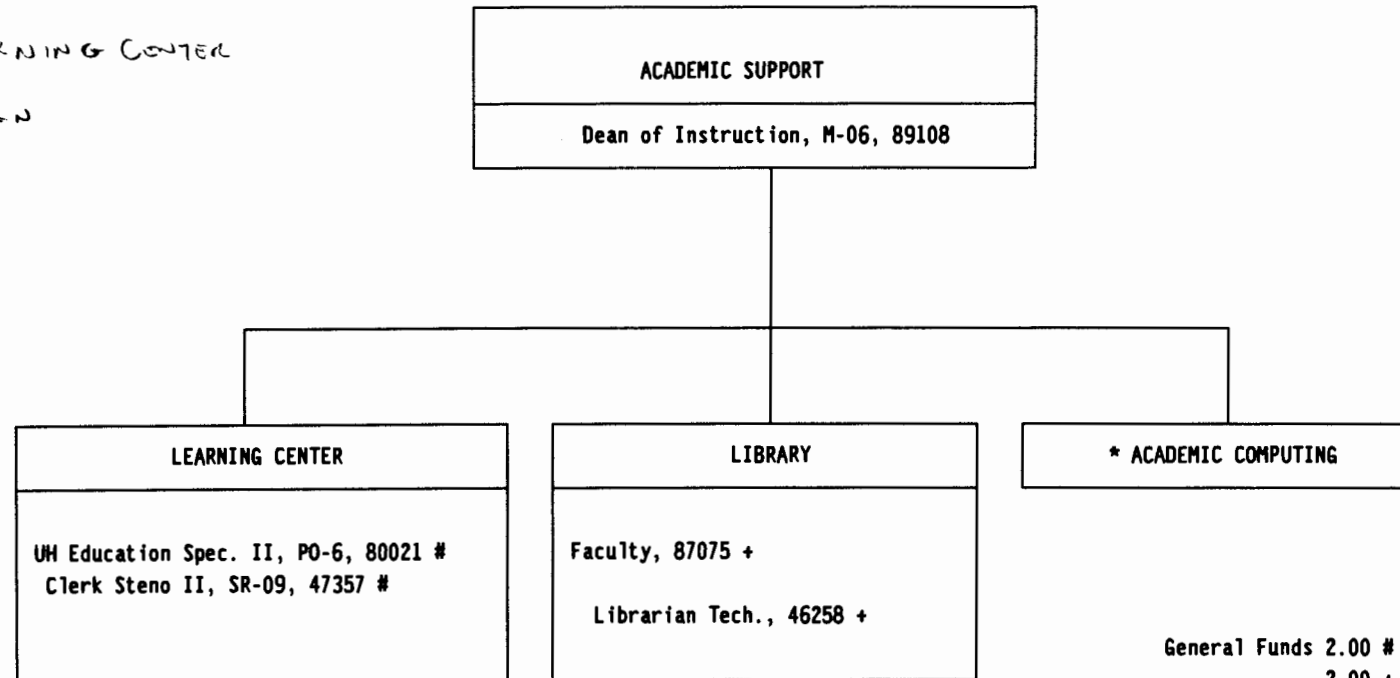
Chart IIIb

SUPERSEDED 3/17/94

POSITION TRANSFER, Faculty,

84380 TO LEARNING CENTER

FROM INSTRUCTION



General Funds 2.00 #  
2.00 +  
4.00

- \* Duties to be performed on a rotating basis by existing faculty.
- + Position to be transferred to Hawaii CC from Community College Systemwide Support.
- # Position to be transferred to Hawaii CC from UH Hilo.

CHART UPDATED  
DATE JUN 30 1993

STATE OF HAWAII  
UNIVERSITY OF HAWAII  
HAWAII COMMUNITY COLLEGE  
COMMUNITY SERVICES

Position Organization  
Chart

Chart IIIc

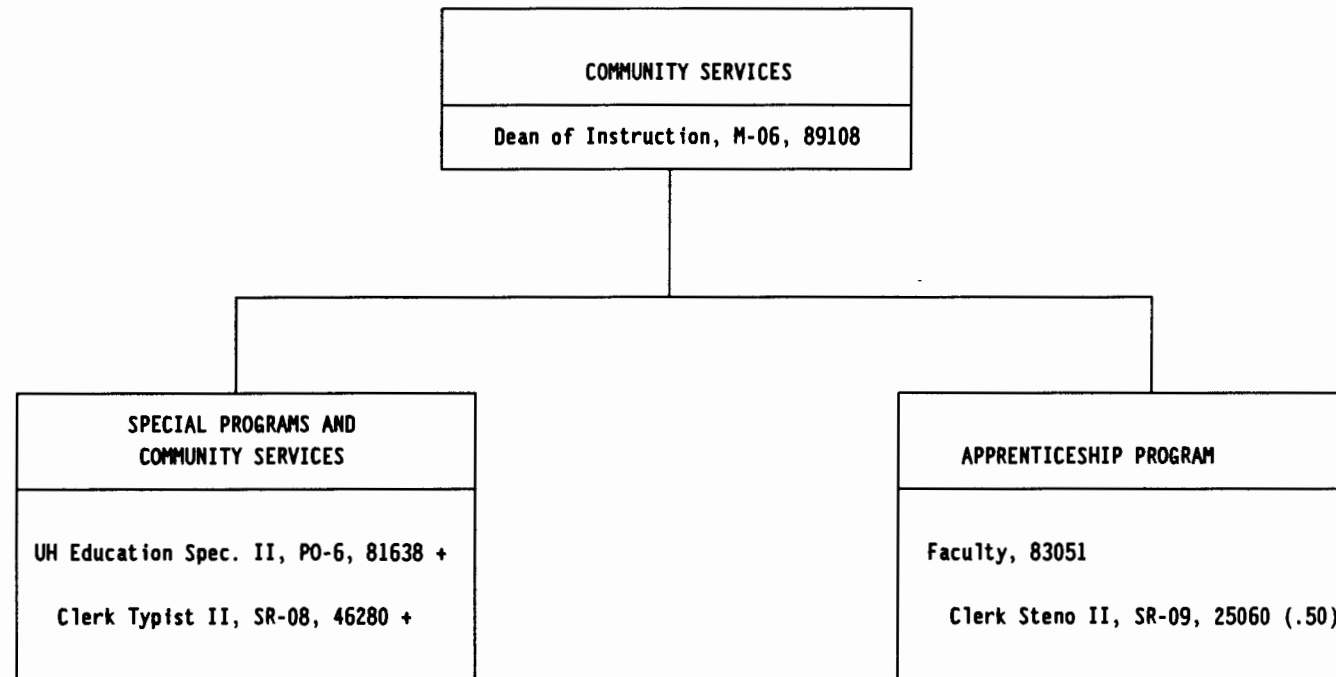


CHART UPDATED  
DATE JUN 30 1993

General Funds 1.50  
2.00 +  
3.50

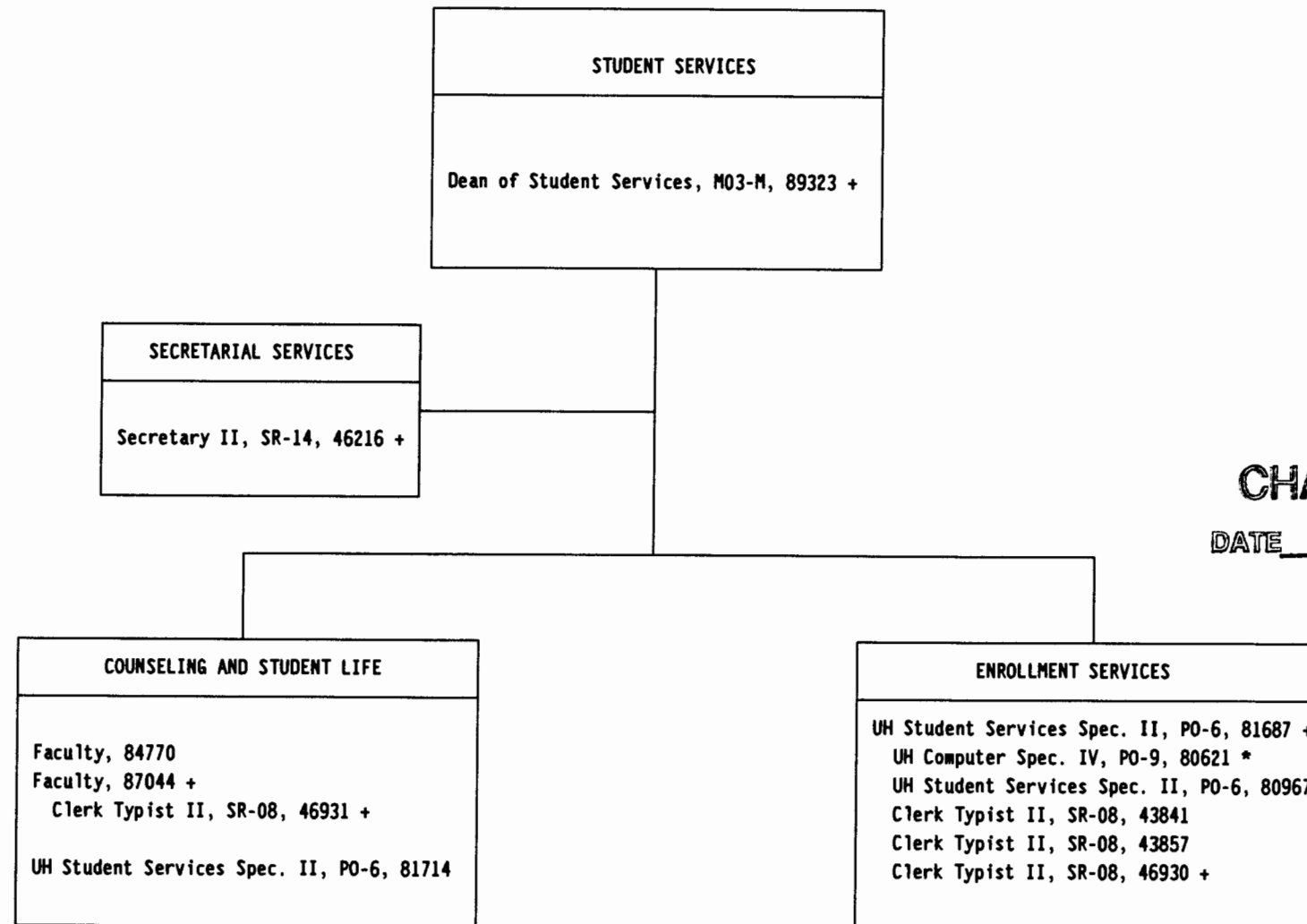
+ Position to be transferred to Hawaii CC from Community College Systemwide Support.



STATE OF HAWAII  
UNIVERSITY OF HAWAII  
HAWAII COMMUNITY COLLEGE  
STUDENT SERVICES

Position Organization  
Chart

Chart IV



**CHART UPDATED**  
DATE JUN 30 1993

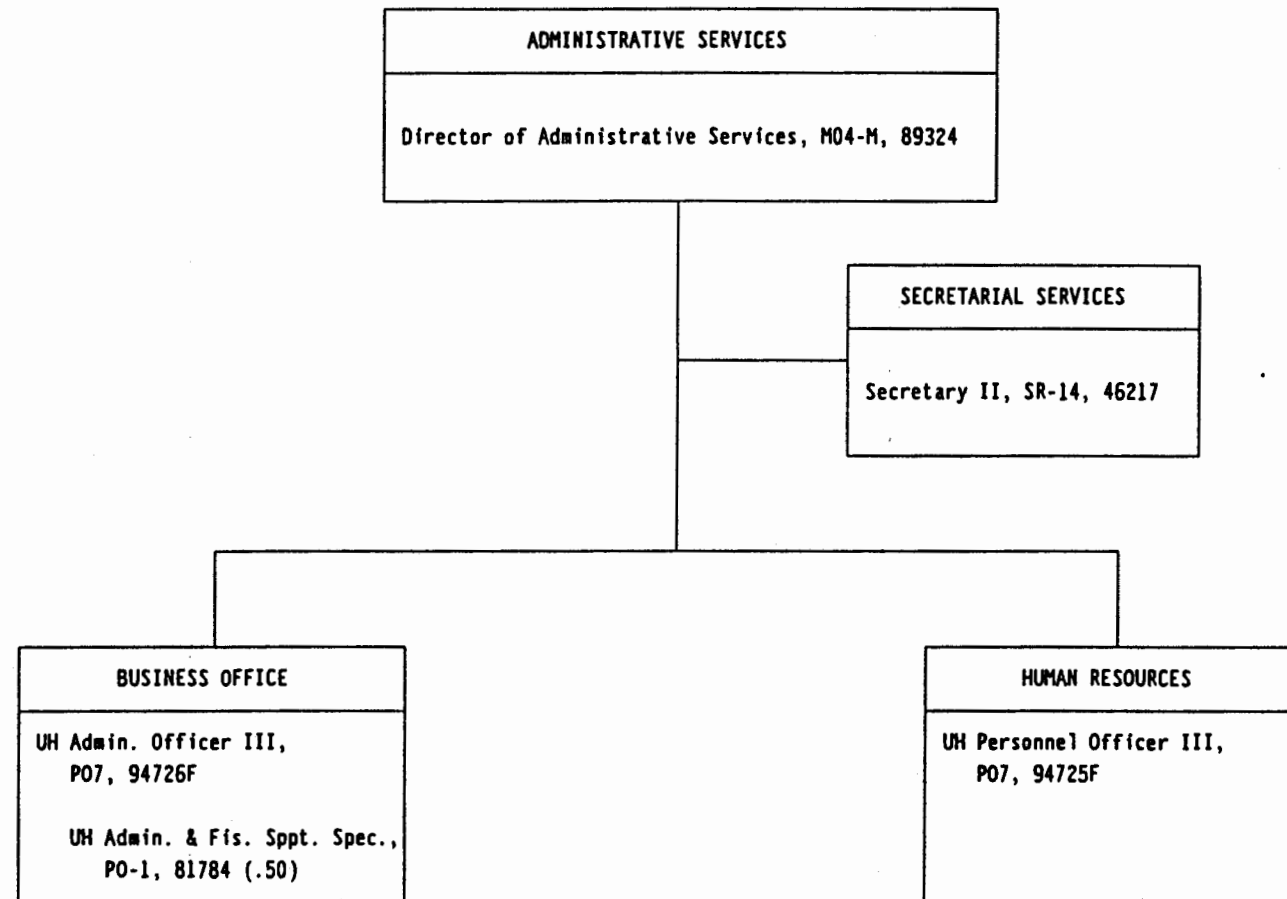
+ Position to be transferred to Hawaii CC from Community College Systemwide Support.  
\* Position varianced from UH Student Services Specialist I.

General Funds 6.00  
6.00 +  
12.00

STATE OF HAWAII  
UNIVERSITY OF HAWAII  
COMMUNITY COLLEGES  
HAWAII COMMUNITY COLLEGE  
ADMINISTRATIVE SERVICES

Position Organization  
Chart

Chart V



APPROVED

*Joyce S. Tsunoda* 12/13/93  
Joyce S. Tsunoda Date  
Senior VP/ Chancellor for  
Community Colleges

General Funds 4.50

STATE OF HAWAII  
UNIVERSITY OF HAWAII  
HAWAII COMMUNITY COLLEGE  
ADMINISTRATIVE SERVICES

Position Organization  
Chart

Chart V

12/13/93 SUPERSEDED  
Reorg.

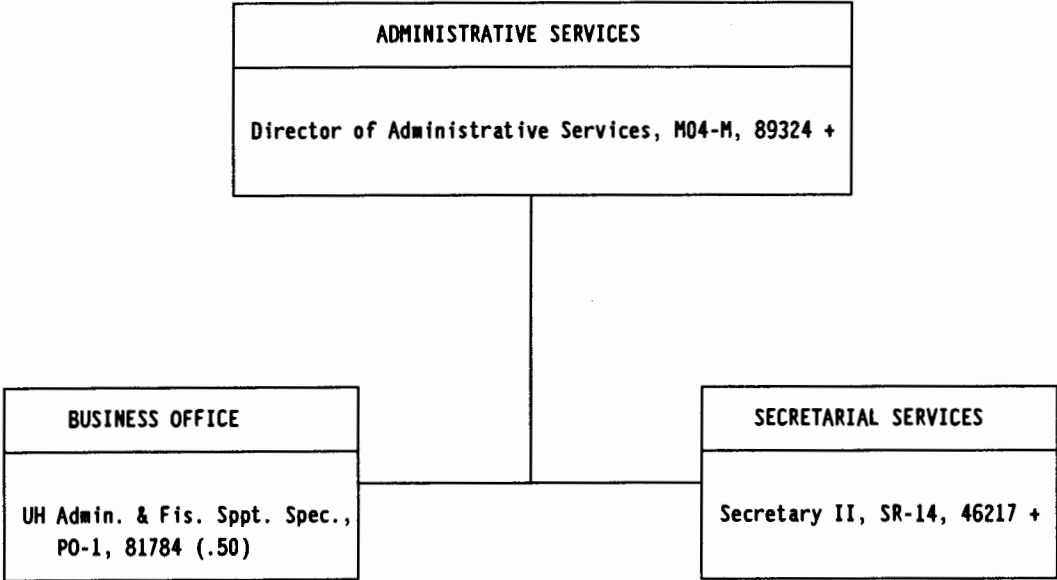


CHART UPDATED  
DATE JUN 30 1993

General Funds .50  
2.00 +  
2.50

+ Position to be transferred to Hawaii CC from Community College Systemwide Support.