

State of Hawaii  
University of Hawaii  
Kapiolani Community College

Position Organization Chart

Chart I

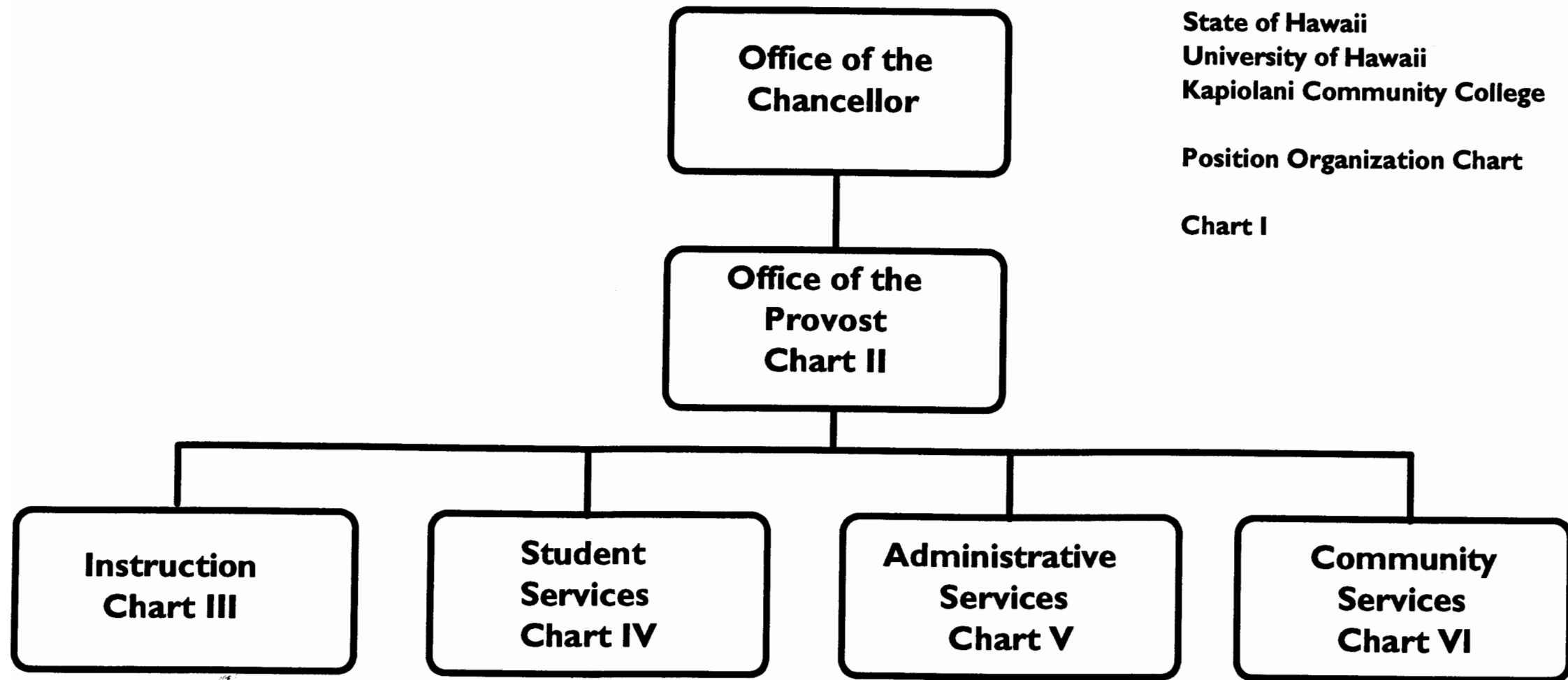
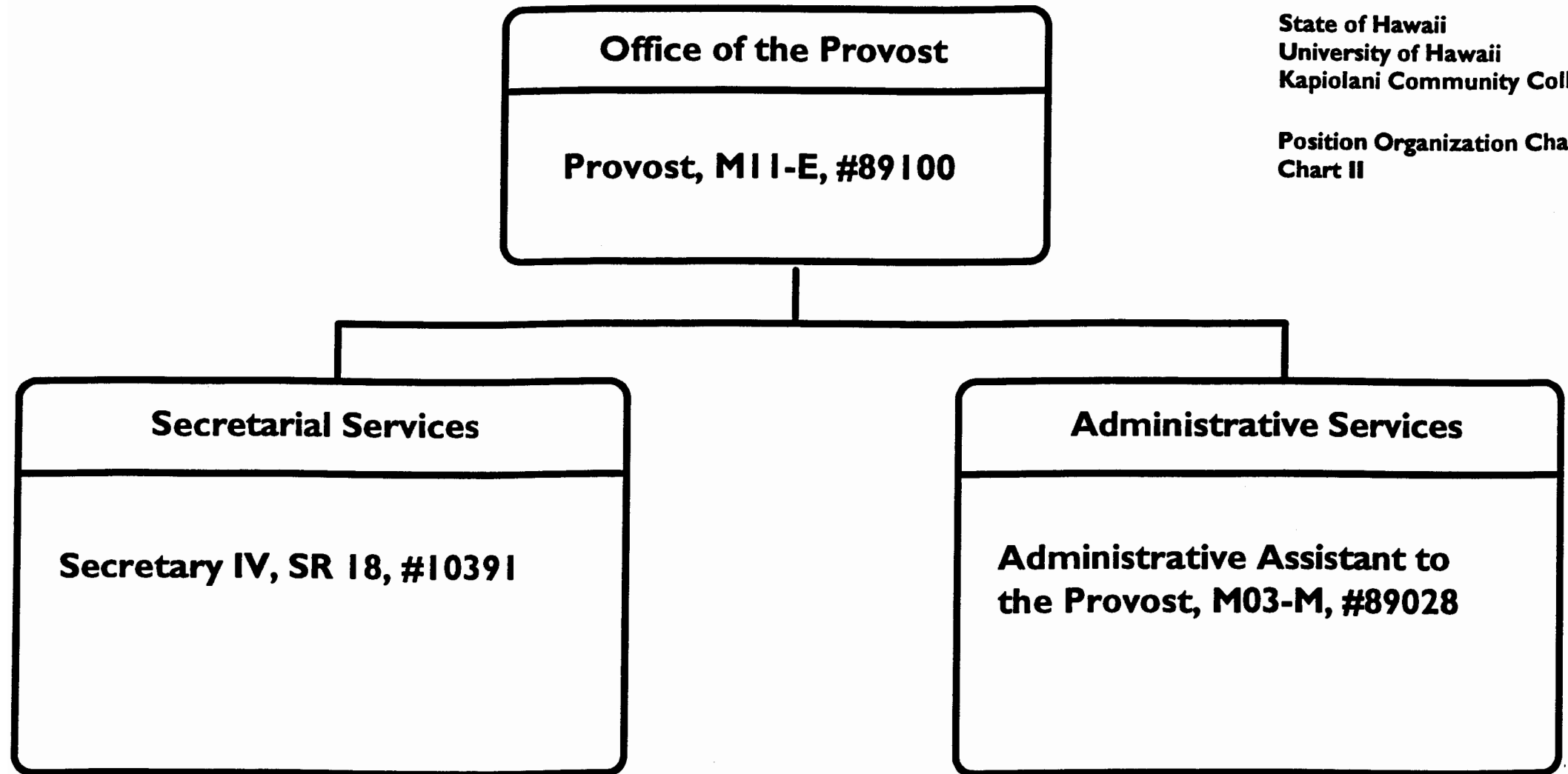


CHART UPDATED  
DATE JUN 30 1993

Chart Updated  
Date June 30, 1993



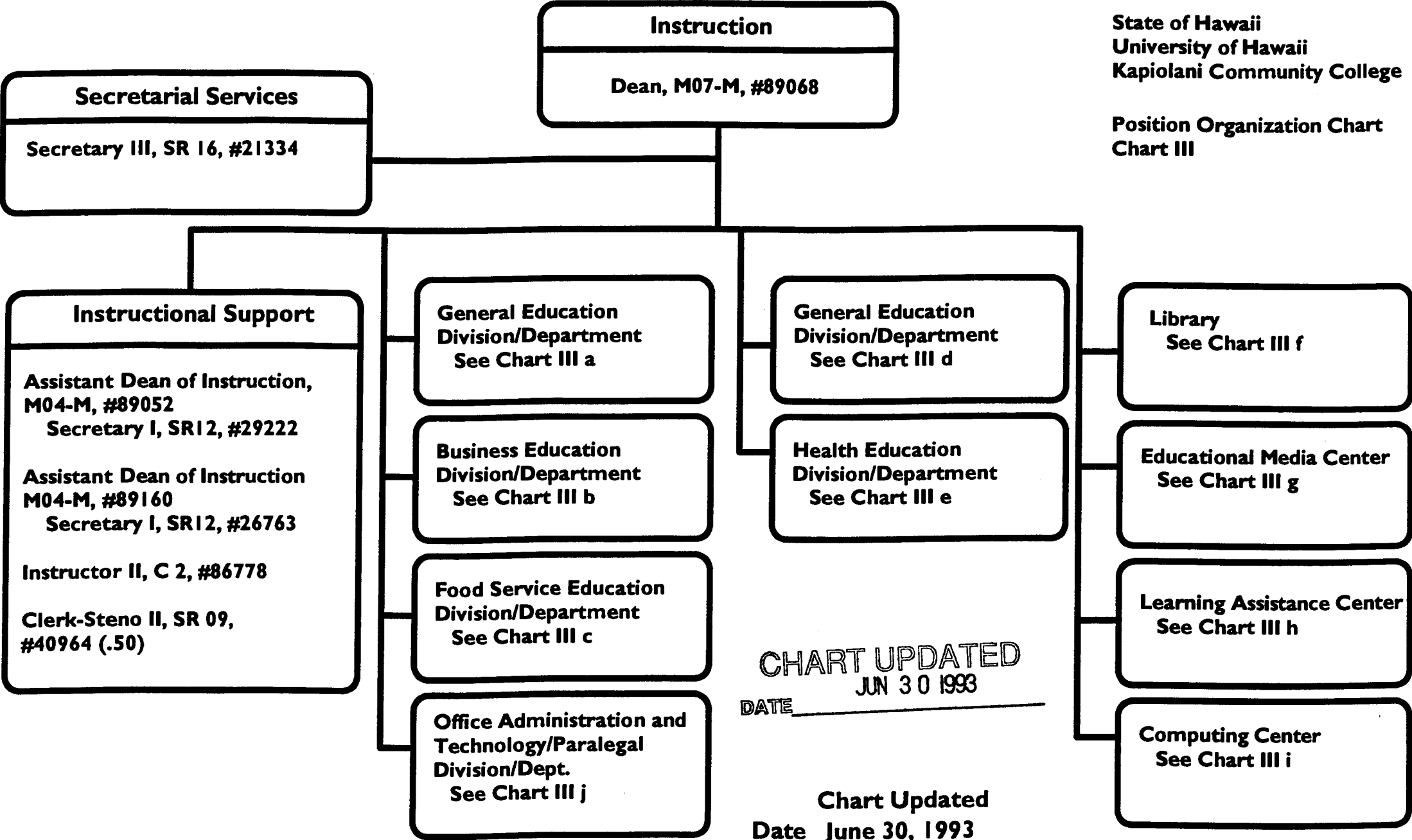
State of Hawaii  
University of Hawaii  
Kapiolani Community College

Position Organization Chart  
Chart II

Chart Updated  
Date June 30, 1993

General Funds (3.00)

CHART UPDATED  
DATE JUN 30 1993



## General Education Division/Department

### General Education

#### Social Science

Chairperson, # \_\_\_\_\_ \*

Faculty Total (12.00)

Full-time: #83745, #84972, #84973, #83642, #82152, #82706,  
#82935, #83492, #82560, #87403, #86599, #86938

#### Language Arts

Chairperson, # \_\_\_\_\_ \*

Faculty Total (22.50)

Full-time: #83559, #82178, #83783, #83903, #82232, #82555,  
#82776, #83308, #83447, #83870, #84327, #84409,  
#83795, #83123, #86596, #86594, #86595, #86604  
#86798, #86803, #86960, #86945

Part-time: #86799 (.50)

#### General Education, Clerical Staff\*\*

Secretary II, SR 14, #22313

Clerk-Typist II, SR08, #26658, #22310, #42059

Clerk-Typist #93151F (.50), #93152F (.50)

State of Hawaii  
University of Hawaii  
Kapiolani Community College

Instruction

Position Organization Chart  
Chart III a

General Funds (39.50)

CHART UPDATED  
DATE JUN 30 1993

Chart Updated

Date June 30, 1993

\*Chairperson is appointed from among faculty positions within department.

\*\*Secretarial and Clerical staff serves all four General Education Departments--Social Science,  
Language Arts, Mathematics/Science, and Humanities.

Pending Establishment: Clerk-Typist #93151F (.50), Clerk-Typist #93152F (.50)

## Business Education Division/Department

### Business Education

#### Accounting/Data Processing

Chairperson, #\_\_\_\_\_\*

Faculty

Total (12.00)

Full-time: #82026, #82066, #82728, #82931, #82795, #83221,  
#84337, #82503, #83901, #86591, #86598, #87123

#### Business Administration

Chairperson, #\_\_\_\_\_\*

Faculty

Total (5.00)

Full-time: #82218, #82429, #82389, #84150,  
#84369

#### Business Education, Clerical Staff

Secretary II, SR 14, #22312

Clerk-Typist #93150F (.50)

\*Chairperson is appointed from among faculty positions within department.  
Pending Establishment: Clerk-Typist #93150F (.50)

State of Hawaii  
University of Hawaii  
Kapiolani Community College

Instruction

Position Organization Chart  
Chart III b

General Funds (18.50)

CHART UPDATED

DATE JUN 30 1993

Chart Updated  
Date June 30, 1993

**Food Service and Hospitality Education  
Division/Department**

**Food Service and Hospitality Education**

**Chairperson, # \_\_\_\_\_ \***

**Faculty Total (15.00)**

**Full-time: #82540, #82970, #83225, #83460, #83684, #84091,  
#84103, #84304, #84539, #82683, #82467, #83133,  
#86597, #86670, #86719**

**UH Educational & Academic Support Sp, P01, #81420 (w), #81422 (w)**

**Food Service, Clerical Staff**

**Secretary II, SR 14, #16962**

**Cook II, WB 08, #22318 (w)**

**Snack Bar Cashier, SR 06, #22319 (w)**

**Purchasing Technician I, SR 11, #29010 (w)**

**Cafeteria Helper, WB 02, #32863 (w)**

**\*Chairperson is appointed from among faculty positions within department.  
(w) Represents positions funded by the Food Service Revolving Fund.**

**State of Hawaii  
University of Hawaii  
Kapiolani Community College**

**Instruction**

**Position Organization Chart  
Chart III c**

**General Funds (16.00)  
(W) Revolving Funds (6.00)**

**CHART UPDATED**

**DATE JUN 30 1993**

**Chart Updated  
Date June 30, 1993**

## General Education Division/Department

### General Education

#### Mathematics/Science

Chairperson, # \_\_\_\_\_ \*

Faculty Total (23.00)

Full-time: #82492, #82981, #83974, #84458, #82394, #83096,  
#83262, #83688, #83733, #83357, #83939, #87401,  
#82910, #86600, #86592, #86593, #86606, #86754,  
#86718, #82031, #86827, #86830, #86959

UH Educational Specialist I, P03, #81246

#### Humanities

Chairperson, # \_\_\_\_\_ \*

Faculty Total (16.00)

Full-time: #84971, #83094, #82631, #82925, #83809, #84974,  
#82607, #84470, #82052, #82983, #87402, #87404,  
#86602, #84882, #86937, #82231

State of Hawaii  
University of Hawaii  
Kapiolani Community College

Instruction

Position Organization Chart  
Chart III d

General Funds (40.00)

CHART UPDATED

DATE JUN 30 1993

\* Chairperson is appointed from among faculty positions within department.

Chart Updated  
Date June 30, 1993

## Health Education Division/Department

### Health Education

#### Allied Health

Chairperson, # \_\_\_\_\_ \*

Faculty Total (13.10)

Full-time: #84326, #83310, #83667, #82121, #82405, #82576,  
#83321, #82162, #85821, #86385, #86384, #86882,  
#86886

Part-time: #87052 (.10)

#### Nursing

Chairperson, # \_\_\_\_\_ \*

Faculty Total (31.50)

Full-time: #82064, #82513, #84487, #84629, #84655, #82244,  
#86774, #86777, #86776, #86752, #86751, #86750,  
#86749, #86747, #86737, #86738, #86746, #86743,  
#86742, #86741, #86740, #86739, #86832, #86833,  
#86834, #86836, #86838, #86837, #86839, #86840

Part-time: #84308 (.50), #84308A (.50), #86736 (.50)

#### Health Education, Clerical Staff

Secretary II, SR 14, #18093

Clerk-Steno II, SR 09, #32952,

Clerk-Typist II, SR08, #42015

\*Chairperson is appointed from among faculty positions within department.

State of Hawaii  
University of Hawaii  
Kapiolani Community College

Instruction

Position Organization Chart  
Chart III e

General Funds (47.60)

CHART UPDATED

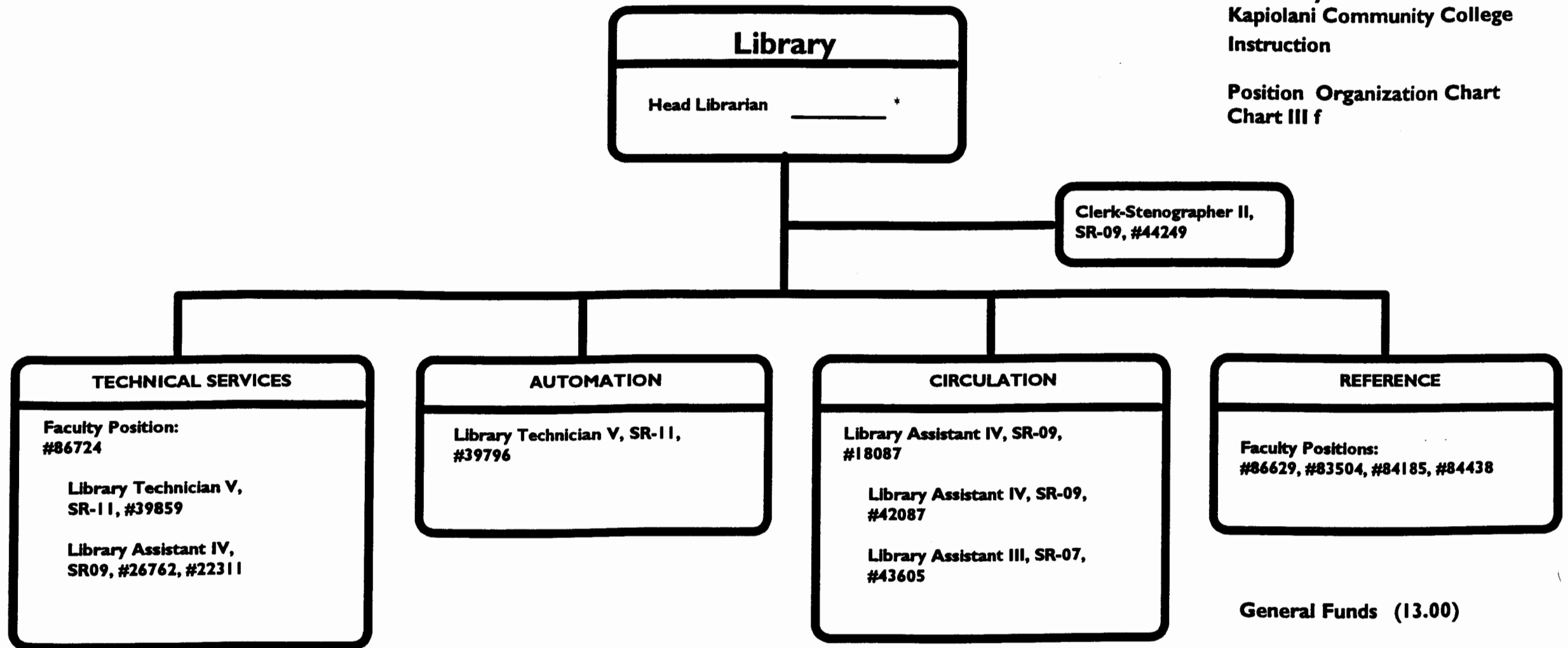
DATE JUN 30 1993

Chart Updated  
Date June 30, 1993



State of Hawaii  
University of Hawaii  
Kapiolani Community College  
Instruction

Position Organization Chart  
Chart III f



General Funds (13.00)

Chart Updated

Date June 30, 1993

\*Unit Head/Chairperson is appointed from among faculty positions within the unit/department.

CHART UPDATED  
DATE JUN 30 1993

## Educational Media Center

Unit Head/Chairperson, #\_\_\_\_\_\*

Faculty: #82386, #87603

UH Electronic Engineer I, P12, #81581

UH Computer Specialist III, P07, #81654

UH Electronic Technician II, P09, #80034

UH Electronic Technician I, P06, #81277

Audio Visual Technician I, WB07, #47350 (.50)

UH Educational Specialist II (Media), P06, #80694

UH Graphic Artist II, P05, #81060

Offset Press Operator III, WB09, #39797

Offset Press Operator II, WB08, #47346 (.50)

Clerk-Steno III, SR 11, #21321

\*Unit Head/Chairperson is appointed from among faculty positions within unit/department.

State of Hawaii  
University of Hawaii  
Kapiolani Community College

Instruction

Position Organization Chart  
Chart III g

General Funds (11.00)

CHART UPDATED  
DATE JUN 30 1993

Chart Updated  
Date June 30, 1993

## Learning Assistance Center

Unit Head/Chairperson, #\_\_\_\_\_\*

**Faculty:**

Full-time: #86758, #84072, #87120

Part-time: #86757 (.50)

UH Educational Specialist II, P06, #81163 (.50)

Clerk-Typist II, SR 08, #14214

\*Unit Head/Chairperson is appointed from among faculty positions at the College.

State of Hawaii  
University of Hawaii  
Kapiolani Community College

Instruction

Position Organization Chart  
Chart III h

General Funds (5.00)

CHART UPDATED  
DATE JUN 30 1993

Chart Updated  
Date June 30, 1993

## Computing Center

UH Computer Specialist V, P11, #81384

UH Computer Specialist IV, P09, #81069, #80529

UH Computer Specialist III, P07, #80340

UH Educational Specialist II, P06, #80351

State of Hawaii  
University of Hawaii  
Kapiolani Community College

Instruction

Position Organization Chart  
Chart III i

General Funds (5.00)

CHART UPDATED

DATE JUN 30 1993

Chart Updated  
Date June 30, 1993

## Office Administration and Technology and Paralegal Division/Department

### Office Administration and Technology/Paralegal Education

#### Office Administration and Technology Programs

Chairperson, # \_\_\_\_\_ \*

Faculty Total (8.00)

Full-time: #82348, #82380, #82876, #83071, #83734, #83771,  
#84223, #84370

#### Paralegal Program

Chairperson, # \_\_\_\_\_ \*

Faculty Total (1.00)

Full-time: #83360

#### Office Administration and Technology/Paralegal Education, Clerical Staff

Secretary II, SR 14, #18092

\*Chairperson is appointed from among instructional positions within department.

State of Hawaii  
University of Hawaii  
Kapiolani Community College

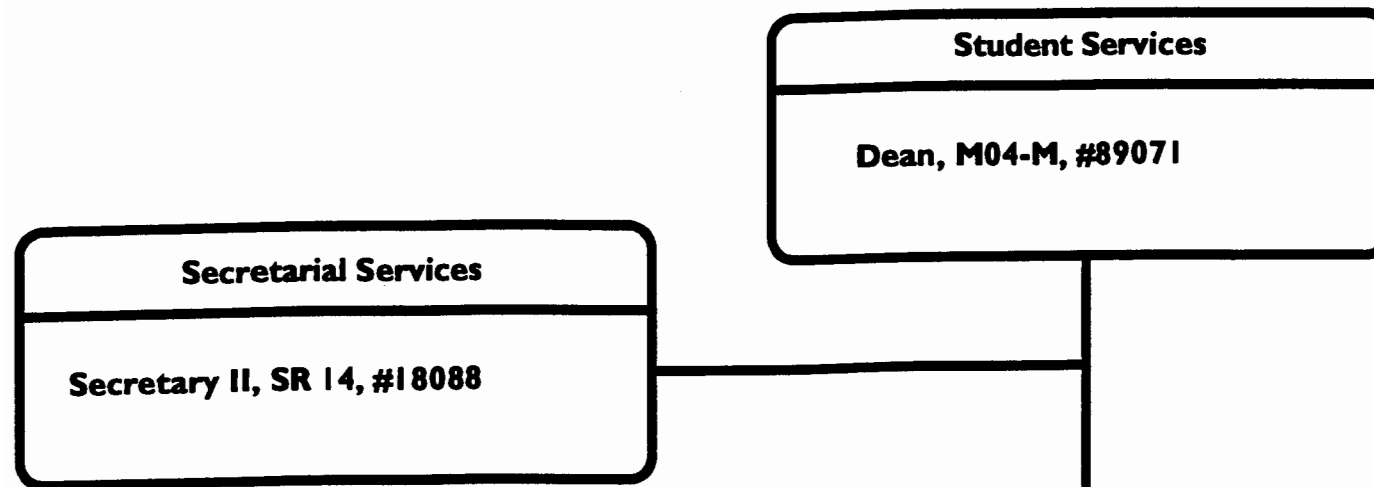
Instruction

Position Organization Chart  
Chart III j

General Funds (10.00)

CHART UPDATED  
JUN 30 1993  
DATE \_\_\_\_\_

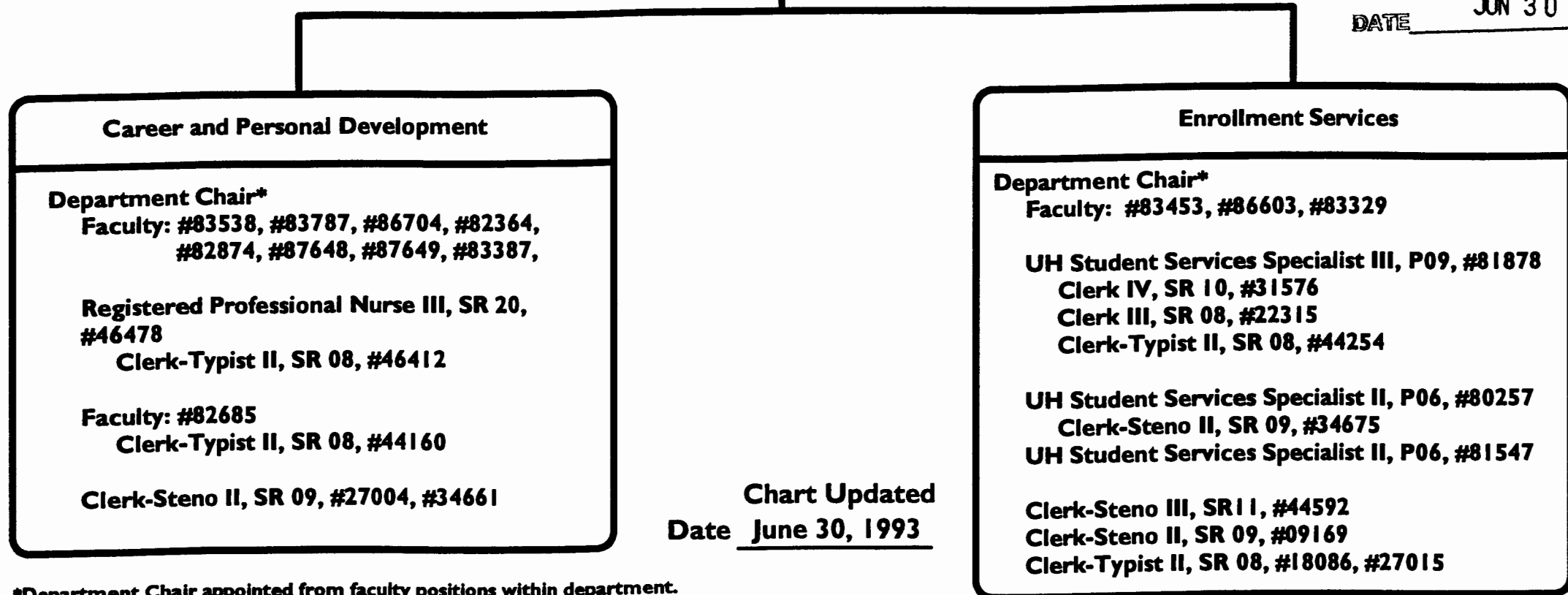
Chart Updated  
Date June 30, 1993



**State of Hawaii  
University of Hawaii  
Kapiolani Community College  
Student Services**

### Position Organization Chart Chart IV

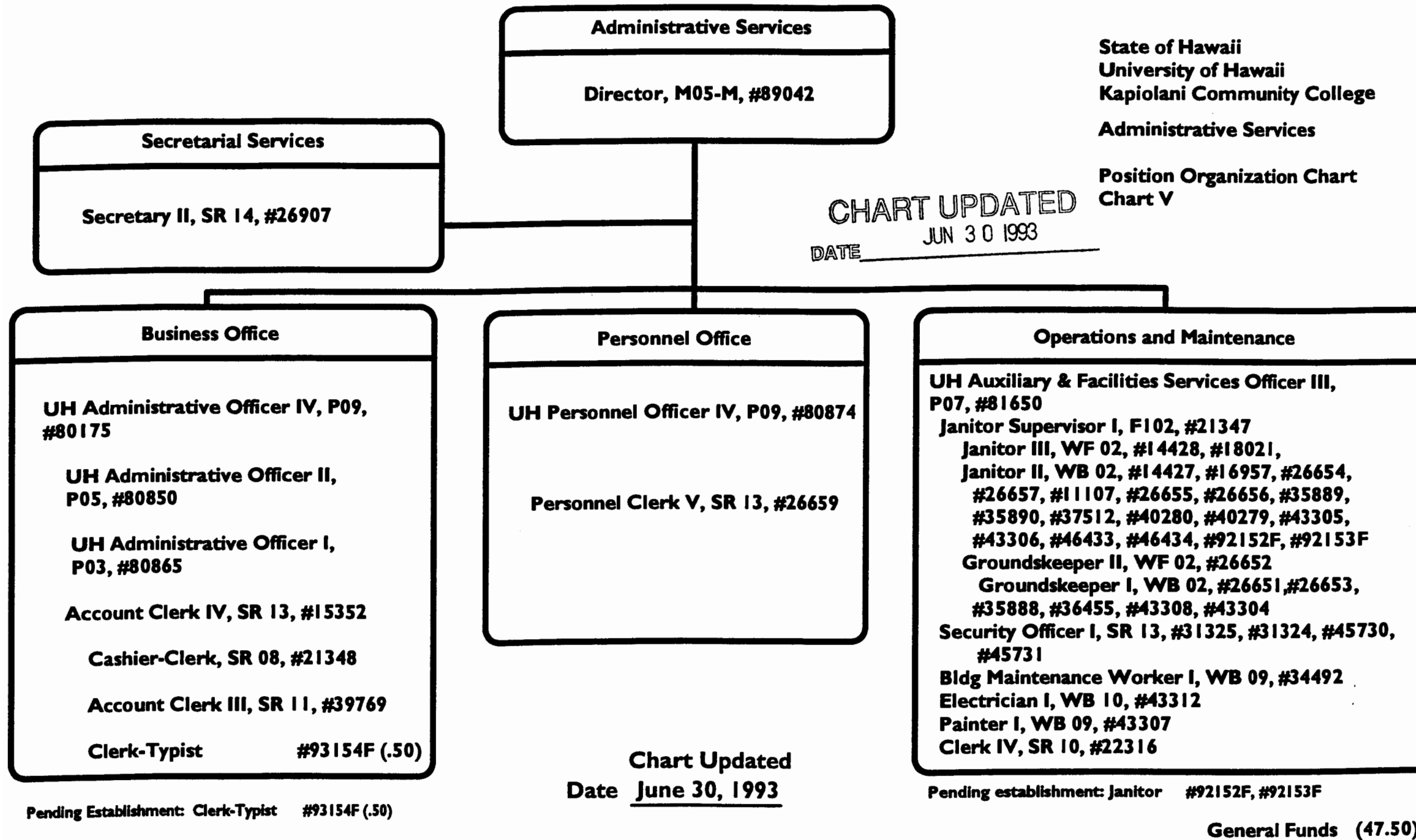
CHART UPDATED  
DATE JUN 30 1993

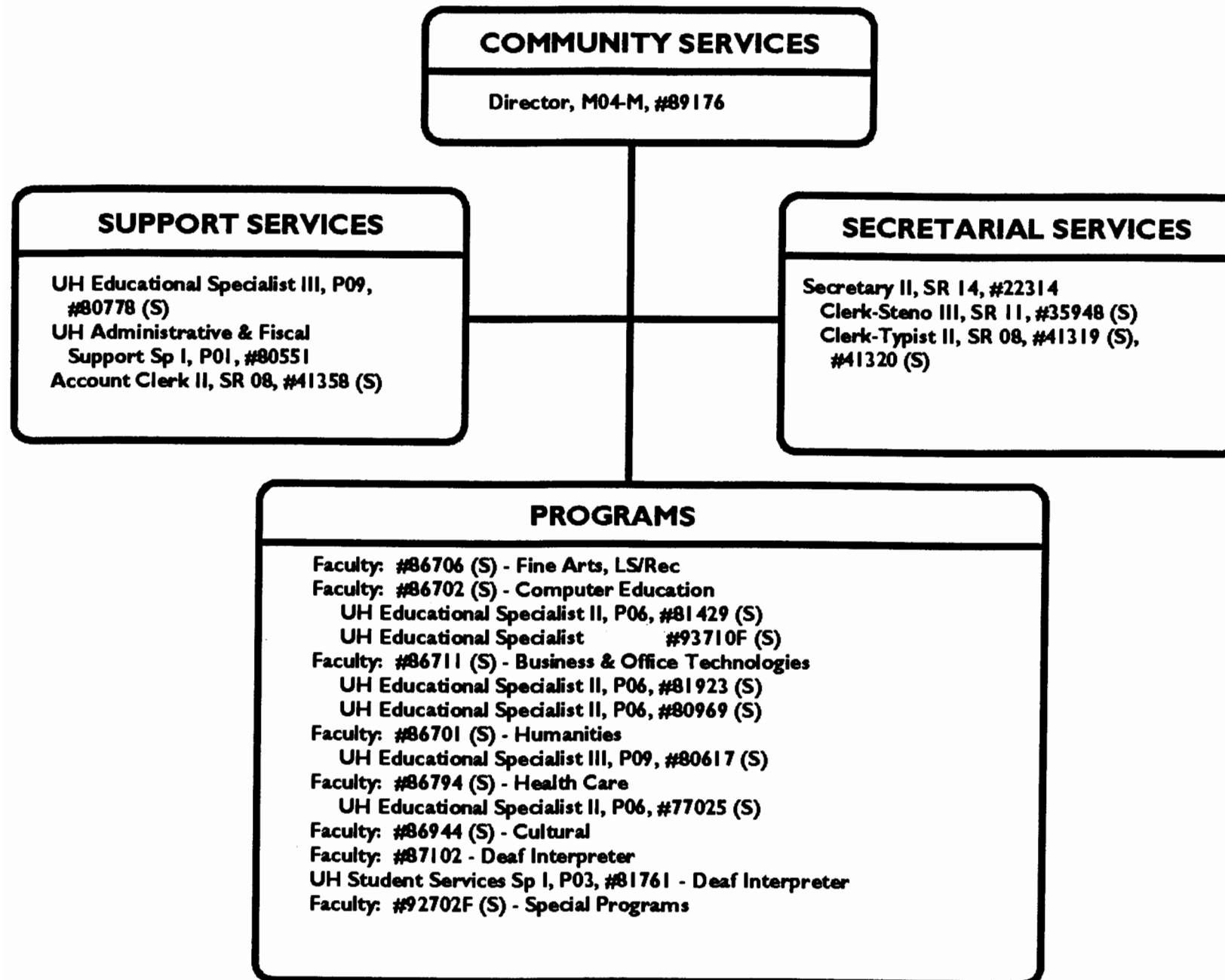


**Chart Updated**  
**Date June 30, 1993**

\*Department Chair appointed from faculty positions within department.

**General Funds (30.00)**





State of Hawaii  
University of Hawaii  
Kapiolani Community College  
Office Of Community Services

Position Organization Chart  
Chart VI

CHART UPDATED  
DATE JUN 30 1993

General Funds (5.00)  
(S) Special Funds (18.00)

Chart Updated  
Date June 30, 1993

(S) Represent positions funded by the Community Services Special Fund  
Pending establishment: Faculty #92702F (S), UH Ed Spec #93710F (S)