

ORGANIZATION CHART
Chart I

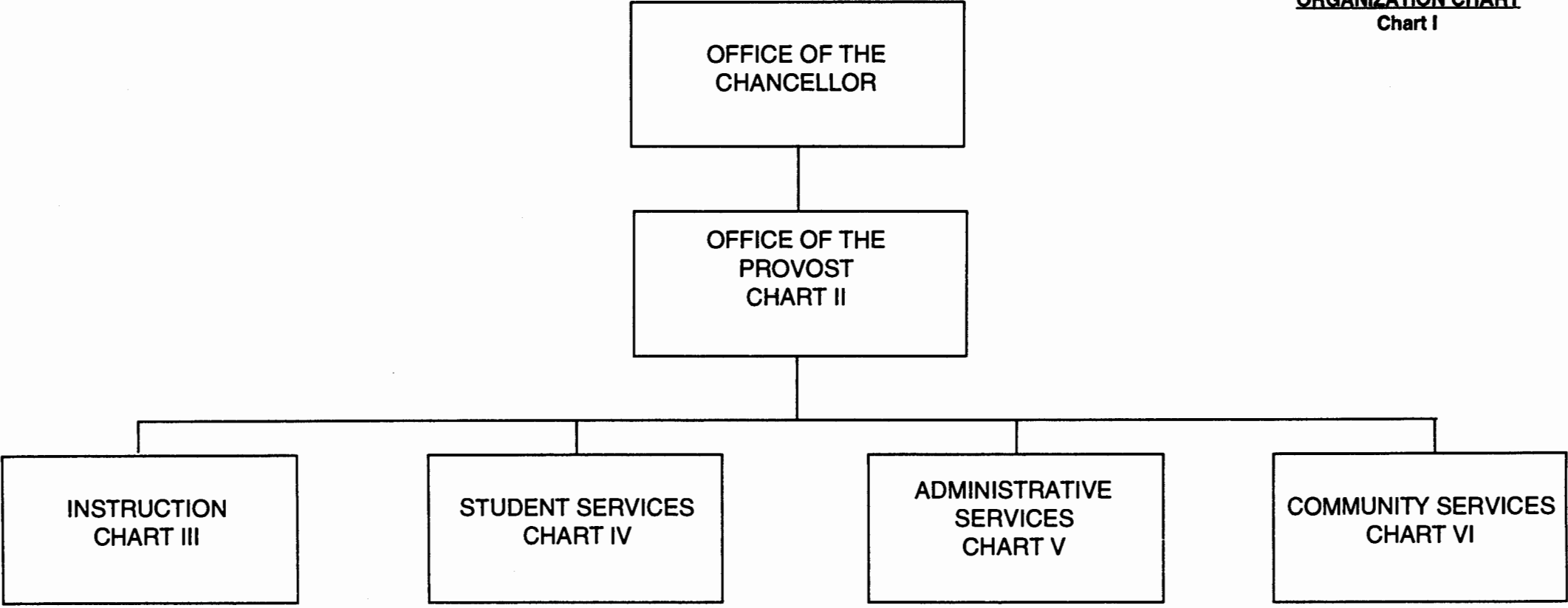


CHART UPDATED

DATE **JUL 30 1993**

July 1993
State of Hawai'i
University of Hawai'i
Kaua'i Community College
Office of the Provost
ORGANIZATION CHART
Chart II

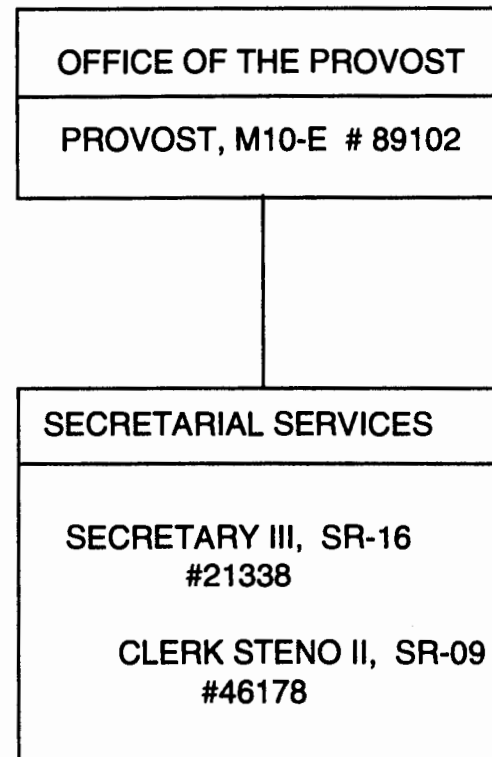


CHART UPDATED
DATE JUL 30 1993

GENERAL FUNDS 3.00

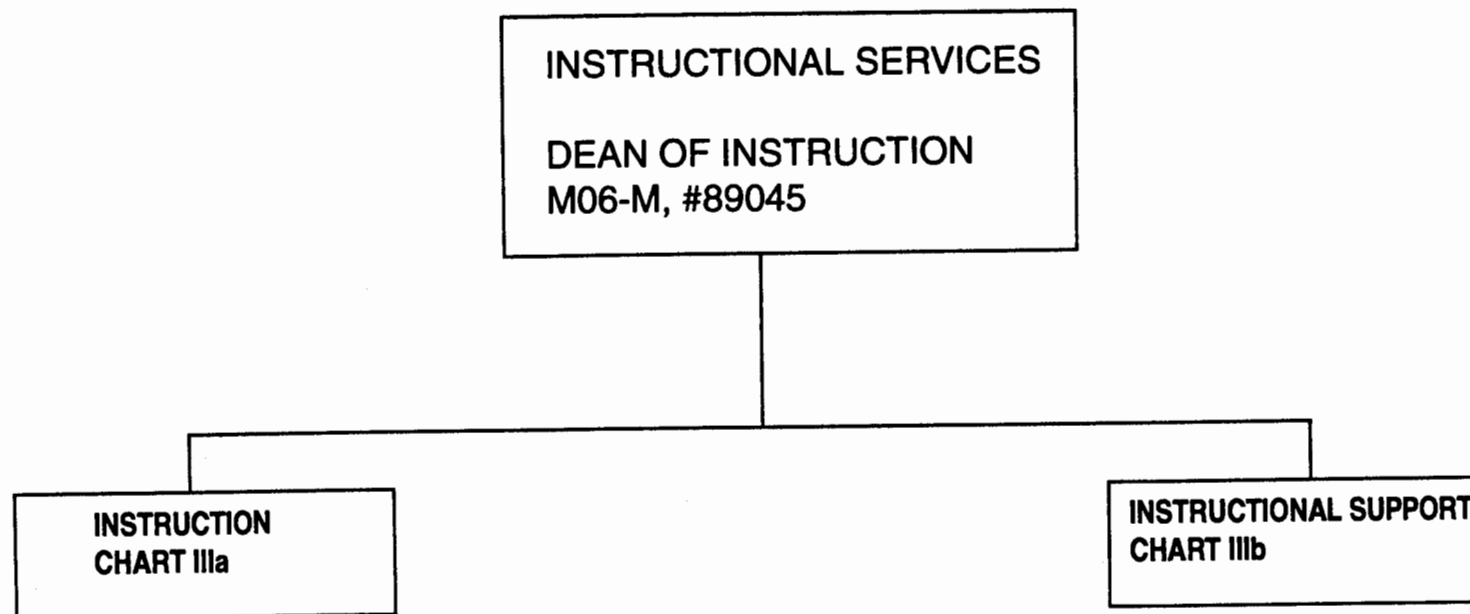
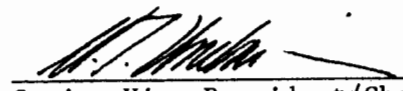


CHART UPDATED
DATE JAN 30 1993

GENERAL FUNDS 1.00


Senior Vice President/Chancellor

9/6/93
Date

INSTRUCTION

DEAN, M06-M

July 1993
State of Hawai'i
University of Hawai'i
Kaua'i Community College
Instruction
ORGANIZATION CHART
Chart IIIa

STENO POOL
CLERK-STENO II, SR-9
#26901, 26902, 24785, 42211

SECRETARIAL SERVICES
SECRETARY II, SR-14
#24393

LANGUAGE ARTS AND
HUMANITIES DIVISION

CHAIRPERSON, # ____*
FACULTY

FOREIGN/ASIAN/
PAC. LANG
#87094, #87119A (.50)
ART
#83324, 83640
ENGLISH
#85047, 82265, 83727,
84176, 84277
HISTORY
#82274
PHILOSOPHY
#82149
SPEECH
#82262
MUSIC
#86618
HAWAIIAN STUDIES
#86811
THINKING & WRITING
#87015
DRAMA
#87119 (.50)

MATHEMATICS/SCIENCE/
SOCIAL SCIENCE DIVISION

CHAIRPERSON, # ____*
FACULTY

MATH
#84652, 84443
CHEMISTRY
#83179
BIOLOGICAL SCIENCE
#82934
PHYSICAL SCIENCE
#83645
PSYCHOLOGY
#83567
ANTHROPOLOGY
#83208
SOCIOLOGY
#82416
POLITICAL SCIENCE
#85046
COMPUTER SCIENCE
#85048
EARLY CHILDHOOD
#86810
ED. & AC. SUP SP I
#80613
ED. & AC. SUP SP II
#80623

TRADE AND TECHNOLOGY
DIVISION

CHAIRPERSON, # ____*
FACULTY

AUTO TECHNOLOGY
#84392, 84612
AUTO BODY REPAIR
#84153
CARPENTRY
#83132
ELECTRICITY
#84605
MACHINE SHOP
#85045
ELECTRONICS
#83175, 86617
FACILITIES ENG.
#84657

HEALTH EDUCATION
DIVISION

CHAIRPERSON, # ____*
FACULTY

NURSING
#83856, 82579, 83216,
84687, 84015, 86763,
86765, 86779, 86786,
86889
HEALTH/P.E.
#86118

BUSINESS EDUCATION
DIVISION

CHAIRPERSON, # ____*
FACULTY

ACCOUNTING
#84611, 82261
BUSINESS
#83732, 82376
SALES & MANAGEMENT
#82863, 85044
SECRETARIAL & RELATED
#82968, 83874
FOOD SERVICES
#86579, 87014
VISITOR INDUS. PROG
#86901, 85043
ED & AC SUP SP I
#81918, 80241S (W)
Cafeteria Helper,
#94275 F.

*Appointed from instructional positions within divisions on a rotating basis.

GENERAL FUNDS 67.00
REVOLVING FUND 1.00

SUPERSEDED 8/6/93
CHART UPDATED

July 1993
State of Hawai'i
University of Hawai'i
Kaua'i Community College
Instruction
ORGANIZATION CHART
Chart IIIa

INSTRUCTION

DEAN, M06-M

STENO POOL

CLERK-STENO II, SR-9

#26901, 26902, 24785, 42211

SECRETARIAL SERVICES

SECRETARY II, SR-14

#24393

**LANGUAGE ARTS AND
HUMANITIES DIVISION**

CHAIRPERSON, # ____*
FACULTY

FOREIGN/ASIAN/
PAC. LANG
#87094, #87119A (.50)
ART

#83324, 83640

ENGLISH
#85047, 82265, 83727,
84176, 84277

HISTORY
#82274

PHILOSOPHY
#82149

SPEECH
#82262

MUSIC
#86618

HAWAIIAN STUDIES
#86811

THINKING & WRITING
#87015

DRAMA
#87119 (.50)

**MATHEMATICS/SCIENCE/
SOCIAL SCIENCE DIVISION**

CHAIRPERSON, # ____*
FACULTY

MATH
#84652, 84443

CHEMISTRY
#83179

BIOLOGICAL SCIENCE
#82934

PHYSICAL SCIENCE
#83645

PSYCHOLOGY
#83567

ANTHROPOLOGY
#83208

SOCIOLOGY
#82416

POLITICAL SCIENCE
#85046

COMPUTER SCIENCE
#85048

EARLY CHILDHOOD
#86810

ED. & AC. SUP SP I
#80613

ED. & AC. SUP SP II
#80623

**TRADE AND TECHNOLOGY
DIVISION**

CHAIRPERSON, # ____*
FACULTY

AUTO TECHNOLOGY
#84392, 84612

AUTO BODY REPAIR
#84153

CARPENTRY
#83132

ELECTRICITY
#84605

MACHINE SHOP
#85045

ELECTRONICS
#83175, 86617

FACILITIES ENG.
#84657

**HEALTH EDUCATION
DIVISION**

CHAIRPERSON, # ____*
FACULTY

NURSING
#83856, 82579, 83216,
84687, 84015, 86763,
86765, 86779, 86786,
86889

HEALTH/P.E.
#86118

**BUSINESS EDUCATION
DIVISION**

CHAIRPERSON, # ____*
FACULTY

ACCOUNTING
#84611, 82261

BUSINESS
#83732, 82376

SALES & MANAGEMENT
#82808, 85044

SECRETARIAL & RELATED
#82968, 83874

FOOD SERVICES
#86579, 87014

VISITOR INDUS. PROG
#86901, 85043

ED & AC SUP SP I
#81918, 80241S (W)

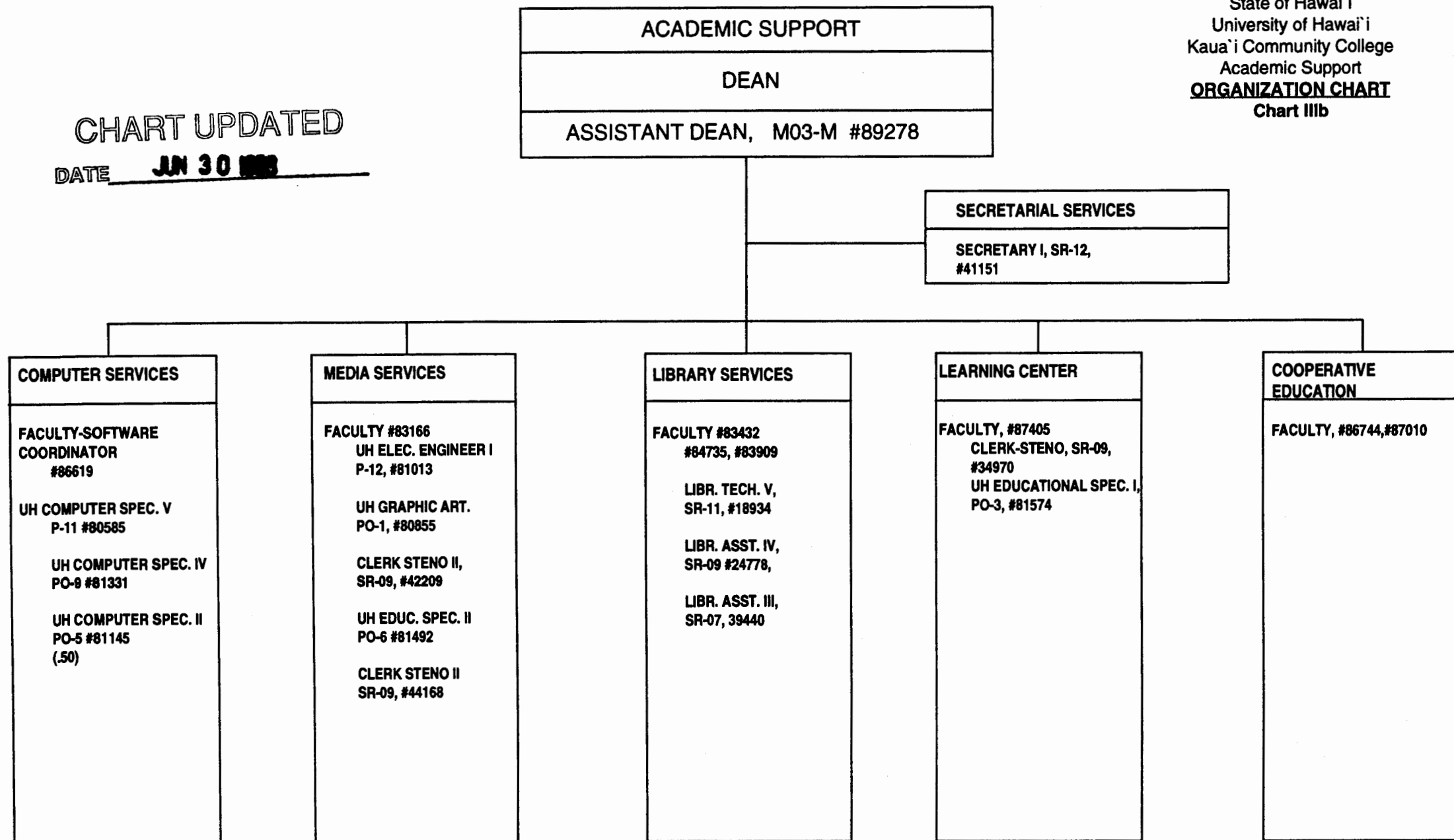
CHART UPDATED
JUN 30 1993
DATE

*Appointed from instructional positions within divisions on a rotating basis.

GENERAL FUNDS 67.00
REVOLVING FUND 1.00

CHART UPDATED
DATE JUN 30 1993

July 1993
State of Hawai'i
University of Hawai'i
Kaua'i Community College
Academic Support
ORGANIZATION CHART
Chart IIIb



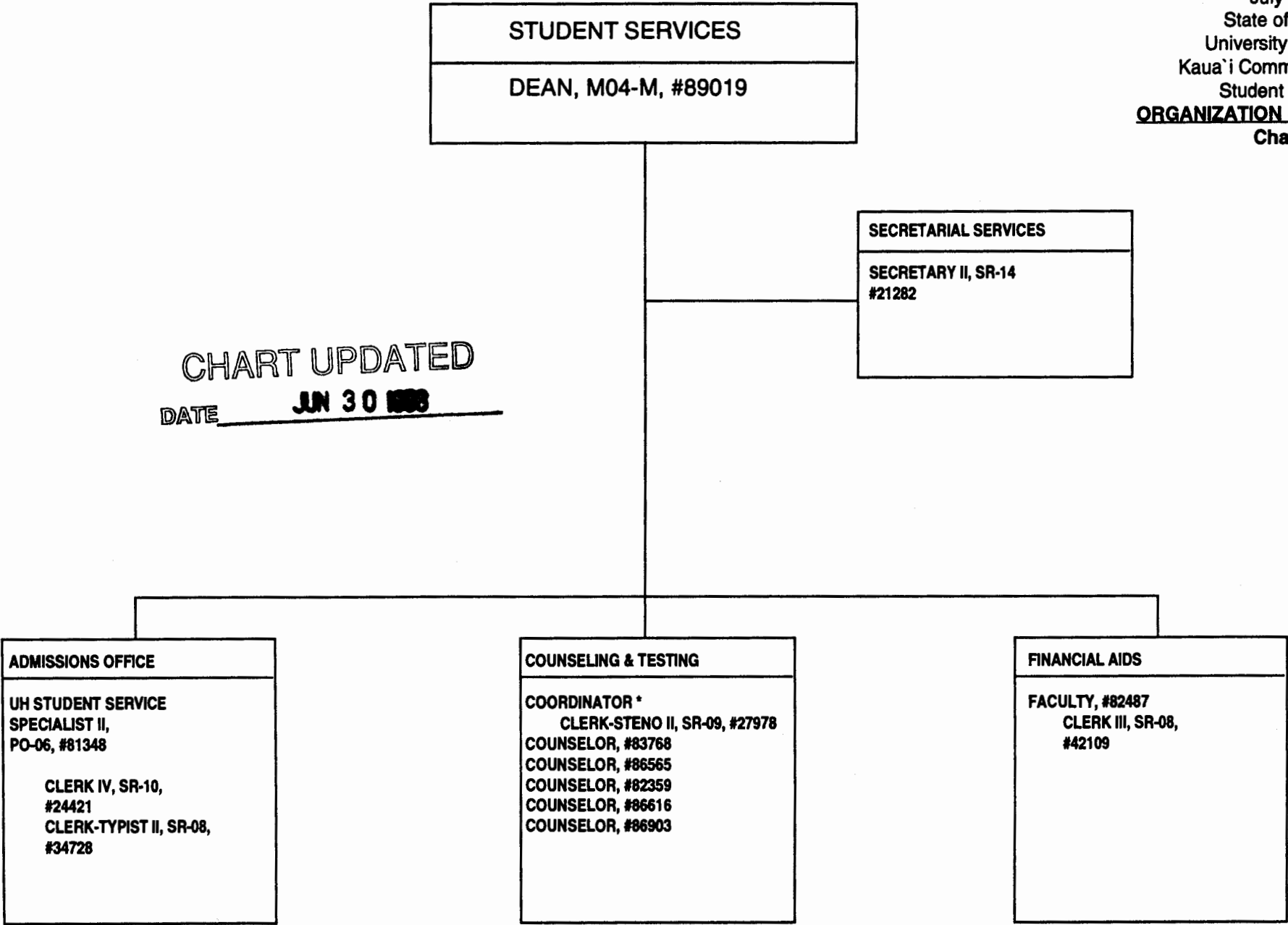
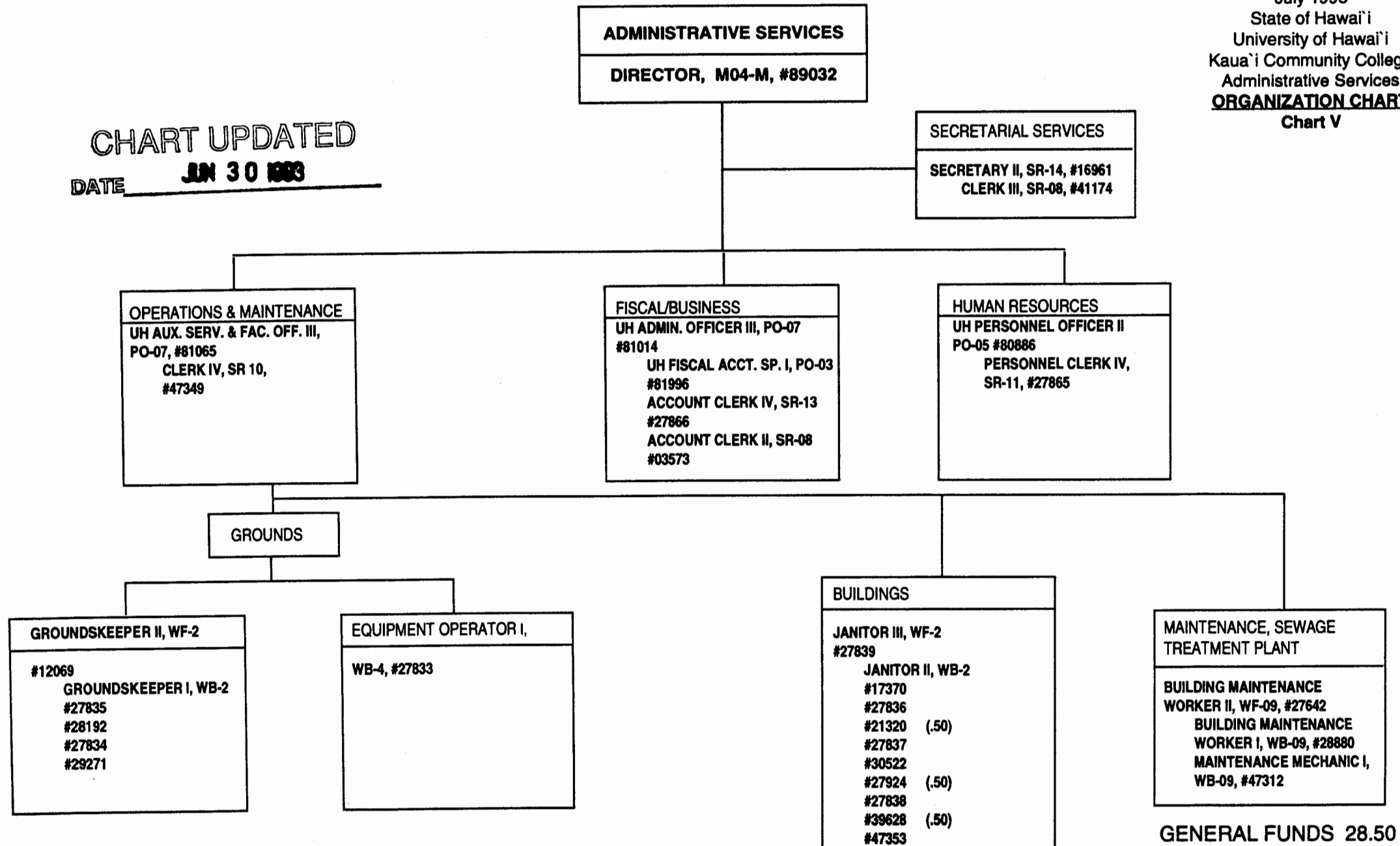


CHART UPDATED
DATE JUN 30 1993

*Coordinator is appointed from among faculty positions within unit.

CHART UPDATED
DATE JUN 30 1993



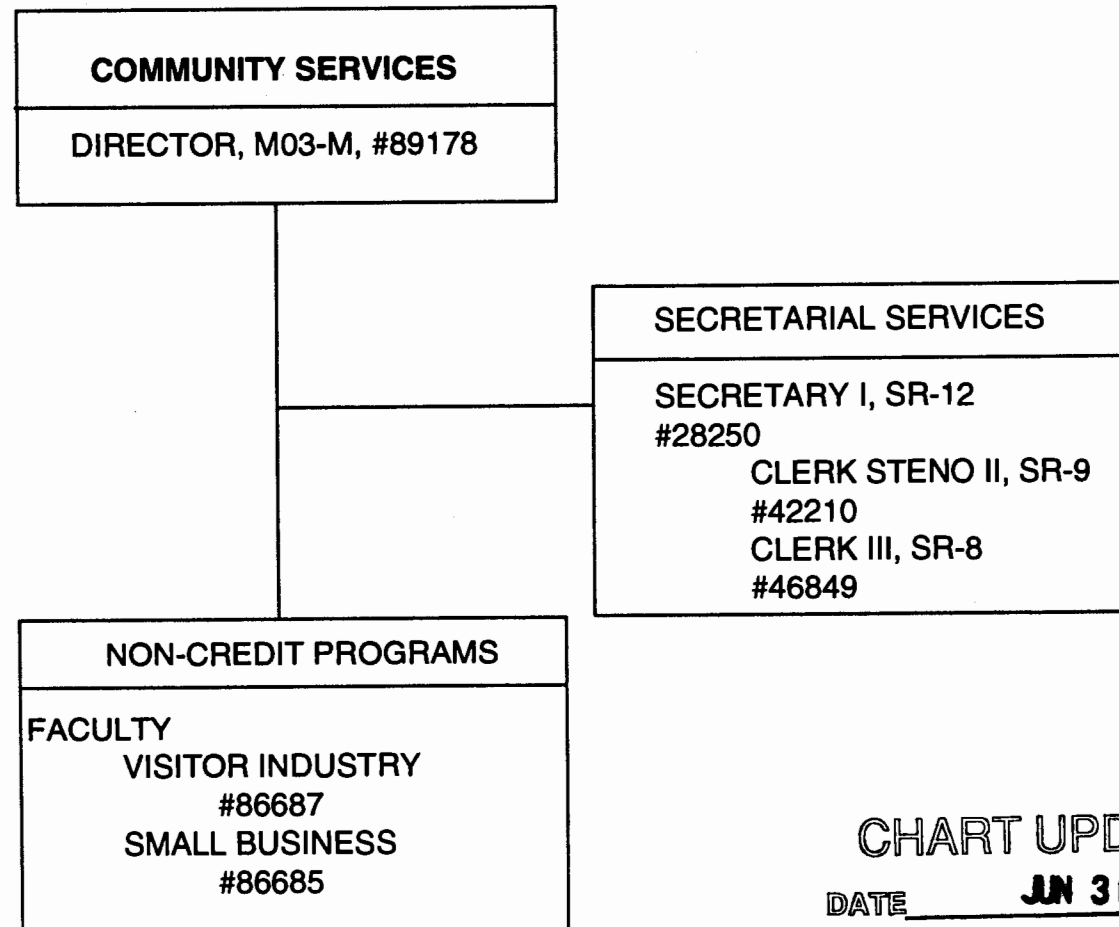


CHART UPDATED
DATE **JUN 30 1993**