

STATE OF HAWAII  
UNIVERSITY OF HAWAII  
LEEWARD COMMUNITY COLLEGE

Position Organization Chart

CHART I

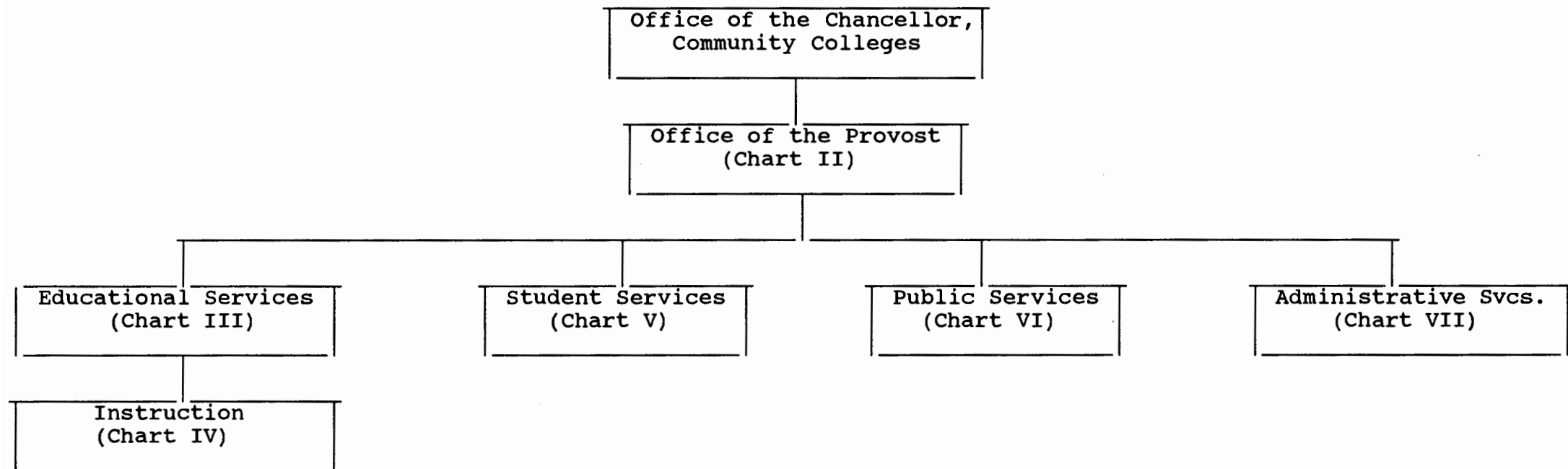
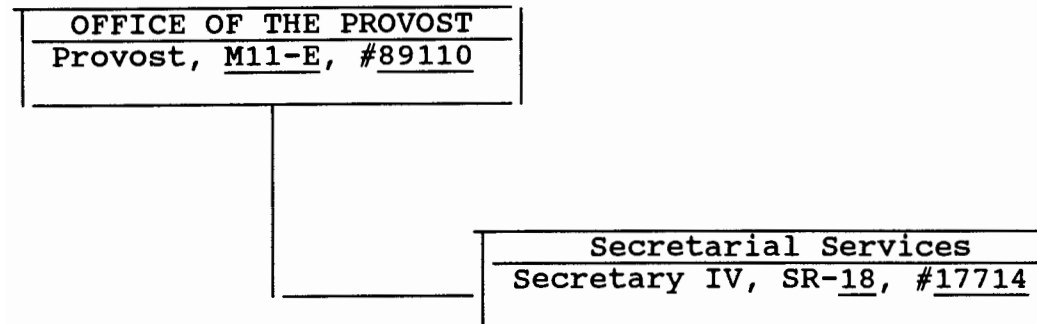


CHART UPDATED  
DATE **JUN 30 1993**

STATE OF HAWAII  
UNIVERSITY OF HAWAII  
LEEWARD COMMUNITY COLLEGE  
OFFICE OF THE PROVOST

Position Organization Chart 06/30/93

Chart II



GENERAL FUNDS 2.00

CHART UPDATED  
DATE JUN 30 1993

STATE OF HAWAII  
UNIVERSITY OF HAWAII  
LEEWARD COMMUNITY COLLEGE

EDUCATIONAL SERVICES

Position Organization Chart

06/30/93

Chart III

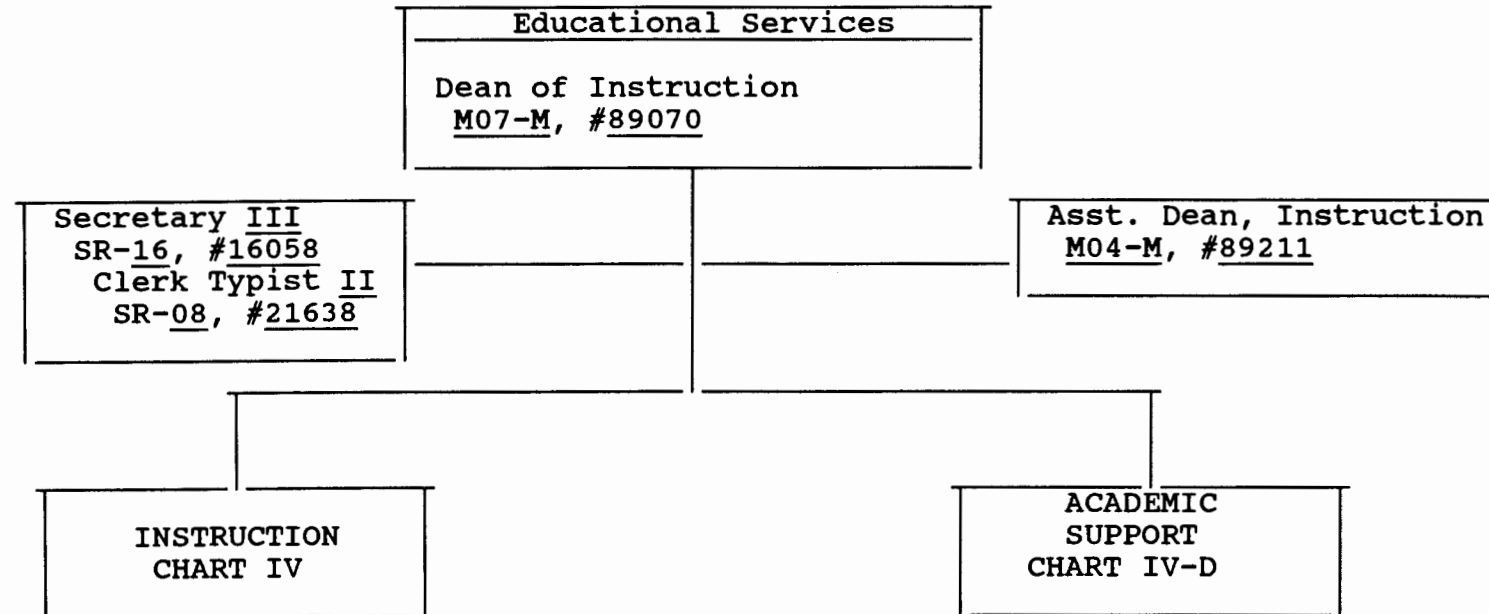


CHART UPDATED  
JUN 30 1993  
DATE \_\_\_\_\_

GENERAL FUNDS 4.00

STATE OF HAWAII  
UNIVERSITY OF HAWAII  
LEEWARD COMMUNITY COLLEGE

INSTRUCTION

Position Organization Chart 06/30/93  
Chart IV

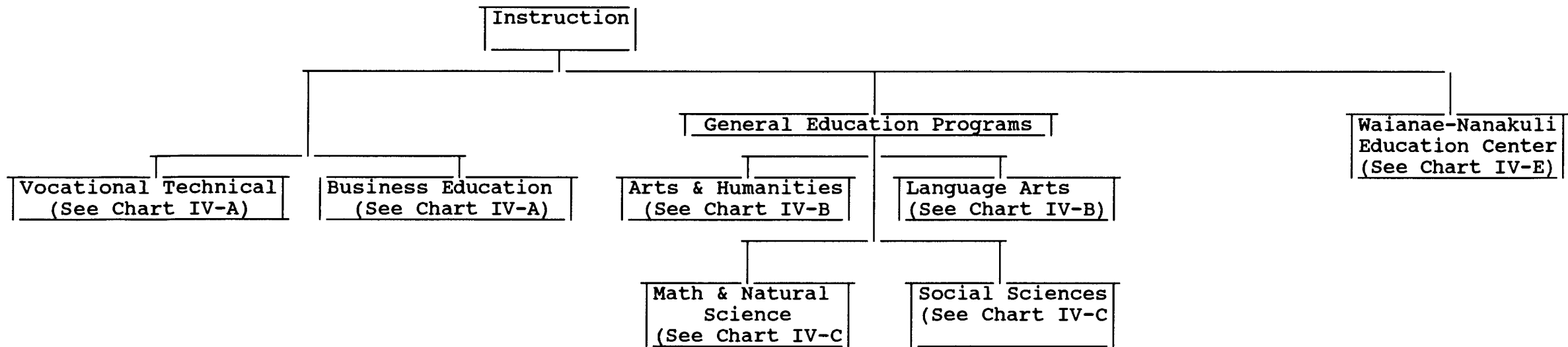


CHART UPDATED  
DATE JUN 30 1993

STATE OF HAWAII  
UNIVERSITY OF HAWAII  
LEEWARD COMMUNITY COLLEGE

INSTRUCTION

Position Organization Chart 06/30/93

Chart IV-A

DEAN OF INSTRUCTION

Vocational Technical

Chairperson\*

Secretary II, SR-14, #22698

Faculty Total (15.50)

Health, Phys. Ed. & Rec.

Full-time: #82731

Food Service

Full-time: #83669, #83145, #84266  
#86583, #84779

\*Classified

Kitchen Helper, WB-05, #45721

Cook I, WB-05, #27088 (W)

Commercial Arts

Full-time: #82697

Auto Mechanics Tech

Full-time: #82495, #84314, #83835  
#84885, #82953

UH ED & Acad Supp Sp, P01, #80800

Drafting Technology

Full-time: #82721, #83309  
#82530 (.5)

TV Production

Full-time: #86654

Business Education

Chairperson\*

Secretary II, SR-14, #17713

Faculty Total (19.50)

Accounting

Full-time: #84275, #82000, #82707  
#83865, #82461, #84621

Business

Full-time: #84589, #82326, #84157

Part-time: #84780 (.4), #83636 (.5)

Sales and Management

Full-time: #83374, #83140

Part-time: #84780 (.6)

Ofc. Admin. & Tech

Full-time: #82264, #83064, #83829  
#83983, #82400, #82489  
#83103

CHART UPDATED

DATE JUN 30 1993

\*Rotating Position

GENERAL FUNDS 39.00  
(W) REVOLVING FUNDS 1.00

#Supervision received by a rotating coordinator

STATE OF HAWAII  
UNIVERSITY OF HAWAII  
LEEWARD COMMUNITY COLLEGE

General Education Programs

GENERAL EDUCATION PROGRAMS

Position Organization Charts 06/30/93

CHART IV-B

Math & Natural Sciences  
Chart IV-C

Social Sciences  
See Chart IV-C

CHART UPDATED

JUN 30 1993

DATE

Arts & Humanities

Chairperson\*

Secretary II, SR-14, #17711

Faculty Total (24.10)

Art

Full-time: #82890, #82502, #84086, #82247

Music

Full-time: #82239, #84426, #84014, #87106  
#82116

Dance

Part-time: #83636 (.5)

Drama & Theatre

Full-time: #83105

Part-time: #83181 (.5)

Philosophy

Full-time: #82941, #83907

Religion

Full-time: #83808

Part-time: #82021 (.6)

History

Full-time: #84018, #84026, #82581, #82306,  
#83474, #83887

Humanities

Full-time: #82427, #86688, #84104

Part-time: #83181 (.5)

Language Arts

Chairperson\*

Secretary II, SR-14, #17710

Faculty Total (38.0)

English

Full-time: #82960, #83945, #84027, #83850, #84181  
#84602, #84653, #84883, #83472, #83570  
#83605, #83697, #82129, #82409, #82498  
#82570, #82932, #86399, #83210, #86789  
#86790, #86791, #86842, #86843, #86844  
Part-time: #83607 (.75), #84098 (.4), #84490 (.4)

Asian Pacific Languages

Full-time: #82692, #83442, #82888

Part-time: #84098 (.6)

Journalism

Part-time: #84490 (.6)

European Language

Full-time: #82165, #82645, #82872

Part-time: #83607 (.25)

English as a Second Language

Full-time: #84555

Speech

Full-time: #82496, #82273

Communication

Full-time: #84606

# General Education Programs

STATE OF HAWAII  
UNIVERSITY OF HAWAII  
LEEWARD COMMUNITY COLLEGE

## GENERAL EDUCATION PROGRAMS

Position Organization Chart

06/30/93

CHART UPDATED

JUN 30 1993

DATE

Arts & Humanities  
See Chart IV-B

Language Arts  
See Chart IV-B

Chart IV-C

### Math & Sciences

#### Chairperson\*

Secretary II, SR-14, #17712

Faculty Total (35.00)

#### Biological Science

Full-time: #82225, #84384, #84679, #82134, #86698

Part-time: #84849 (.2)

#UH Ed & Acad Supp Sp, PO 1, 81873

#### Mathematics

Full-time: #82024, #82522, #84776, #82470, #83055, #82845

#84429, #82035, #84777, #83965, #86642\*\*

#83479, #83180, #87076, #87077

Part-time: #83660 (.4)

#### Chemistry

Full-time: #83218, #82085, #82517

Part-time: #84160 (.8)

#UH ED & Acad Supp Sp, PO 1, #80815

#### Oceanography

Full-time: #83248

Part-time: #84849 (.8), #83847 (.2)

#### Physical Science

Full-time: #82277, #82670, #82404

Part-time: #83847 (.8), #83660, (.6)

#### Science

Part-time: #84160 (.2)

#### Data Processing

Full-time: #82986, #83161, #84557, #84069

#UH Ed & Acad Supp Sp, PO 1, #80780 (.5)

### Social Sciences

#### Chairperson\*

Secretary II, SR-14, #19604

Faculty Total (16.40)

#### Psychology

Full-time: #83104

Part-time: #82017 (.8), #82799 (.8)

#84466 (.8), #82691 (.6)

#### Anthropology

Full-time: #83464, #83615

#### Economics

Full-time: #83369, #83129, #83759

Part-time: #84441 (.6)

#### Geography

Full-time: #83466

#### Political Science

Full-time: #84634

#### Social Science

Part-time: #84358 (.2)

#### Sociology

Part-time: #84358 (.8), #82021 (.4), #84441 (.4),

#82543 (.6)

#### Human Development

Part-time: #82017 (.2), #82799 (.2)

#### Human Services

Full-time: #82029

Part-time: #82691 (.4), #82543 (.4), #84466 (.2)

\*Rotating Position

\*\*Administratively assigned to Waianae-Nanakuli Education Center

#Supervision received by a rotating coordinator

GENERAL FUNDS 55.90

STATE OF HAWAII  
UNIVERSITY OF HAWAII  
LEEWARD COMMUNITY COLLEGE

ACADEMIC SUPPORT

Position Organization Chart

06/30/93

Chart IV-D

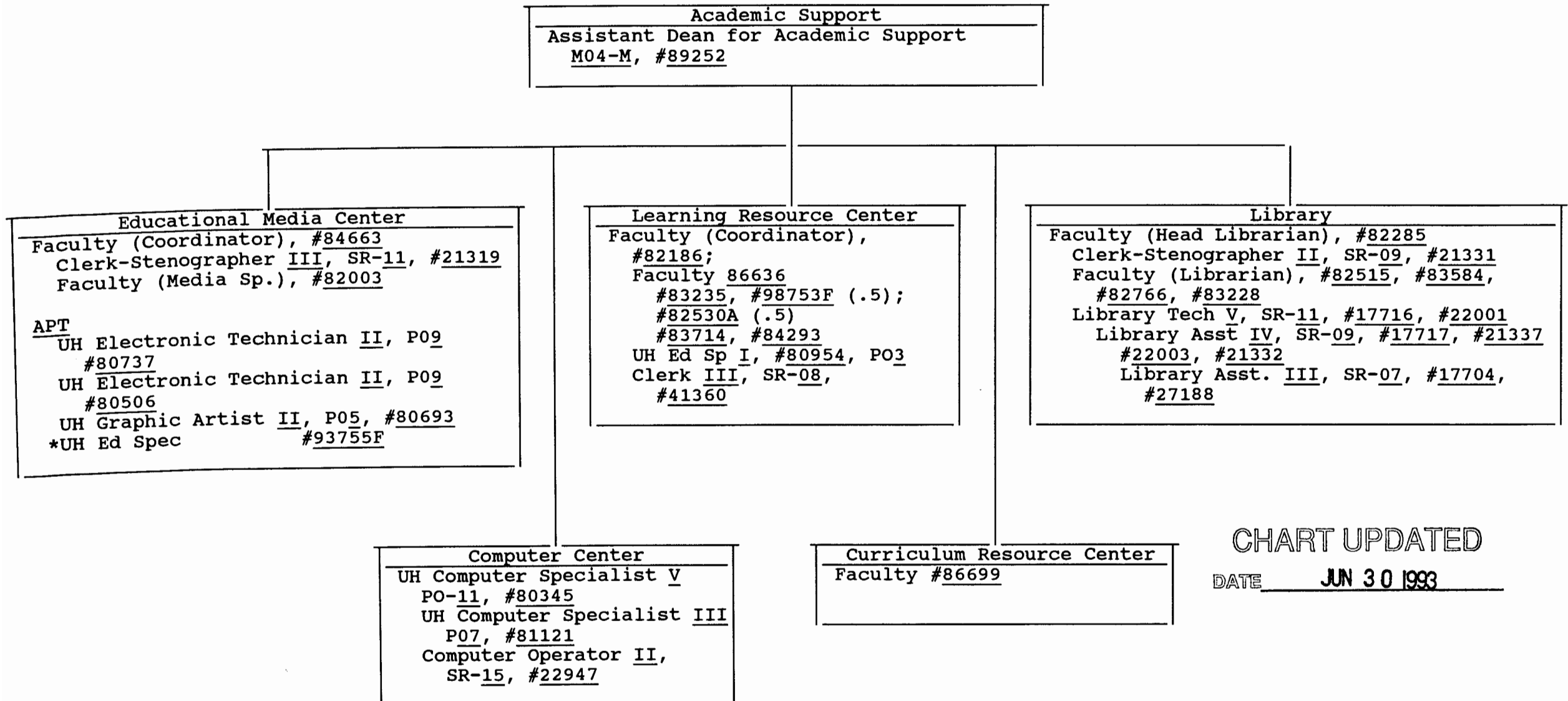


CHART UPDATED

DATE JUN 30 1993



STATE OF HAWAII  
UNIVERSITY OF HAWAII  
LEEWARD COMMUNITY COLLEGE

INSTRUCTION  
Waianae-Nanakuli-Instruction

Position Organization Chart 06/30/93

Chart IV-E

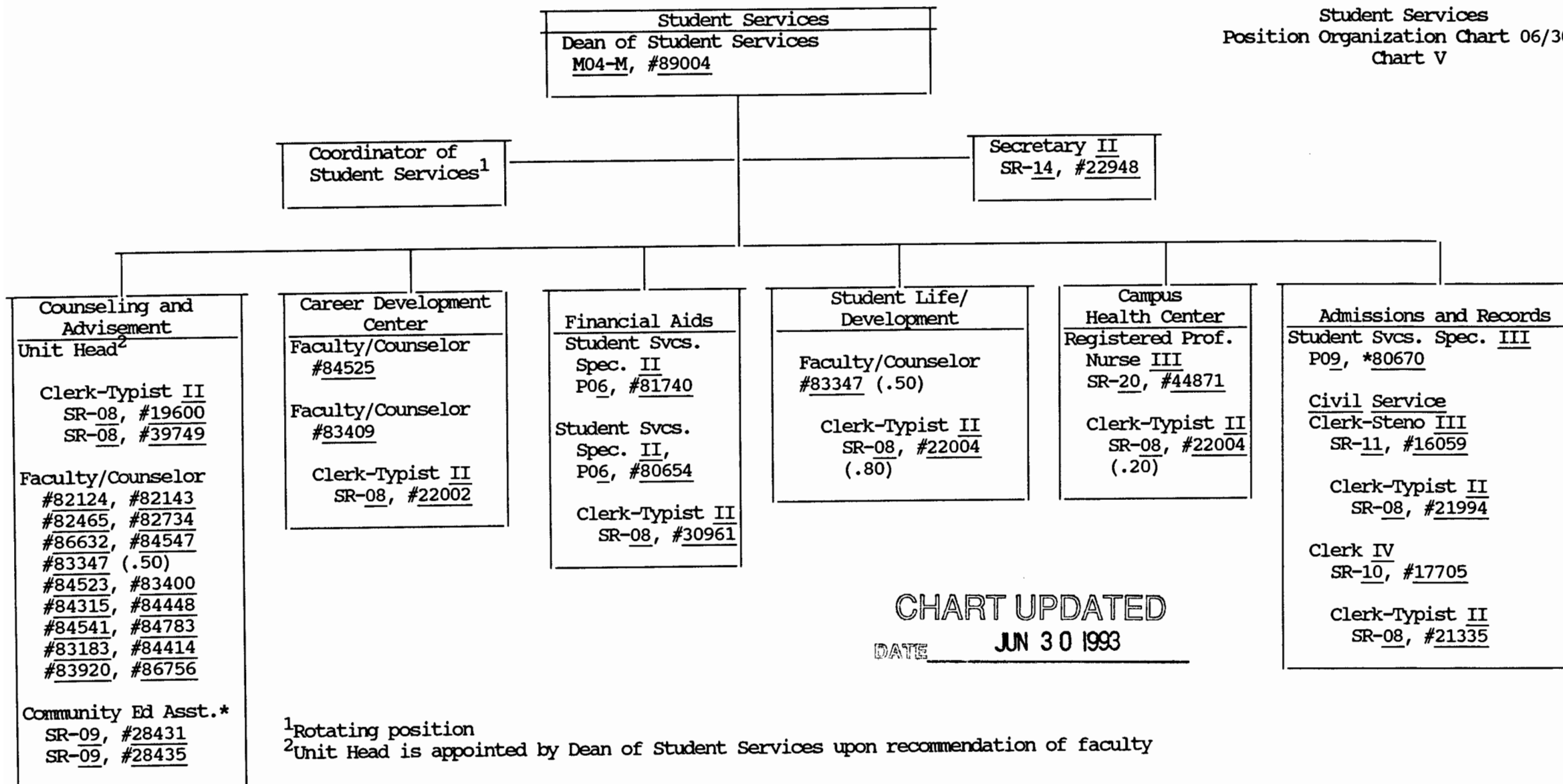
Waianae-Nanakuli Education Center
Coordinator* (1.0)
Clerk Steno <u>II</u> , SR <u>09</u> , # <u>26797</u> , (1.0)
Educ. Spec. <u>I</u> , P03, # <u>81032</u> , (1.0)
#Faculty (2.0)

CHART UPDATED  
DATE JUN 30 1993

\*Rotating faculty position; administratively assigned

#Rotating faculty positions from divisions

GENERAL FUNDS 2.00



\*Assigned to Waianae-Nanakuli Education Center

GENERAL FUNDS 36.00

STATE OF HAWAII  
UNIVERSITY OF HAWAII  
LEEWARD COMMUNITY COLLEGE  
EDUCATIONAL SERVICES

Position Organization Chart      06/30/93  
Chart VI

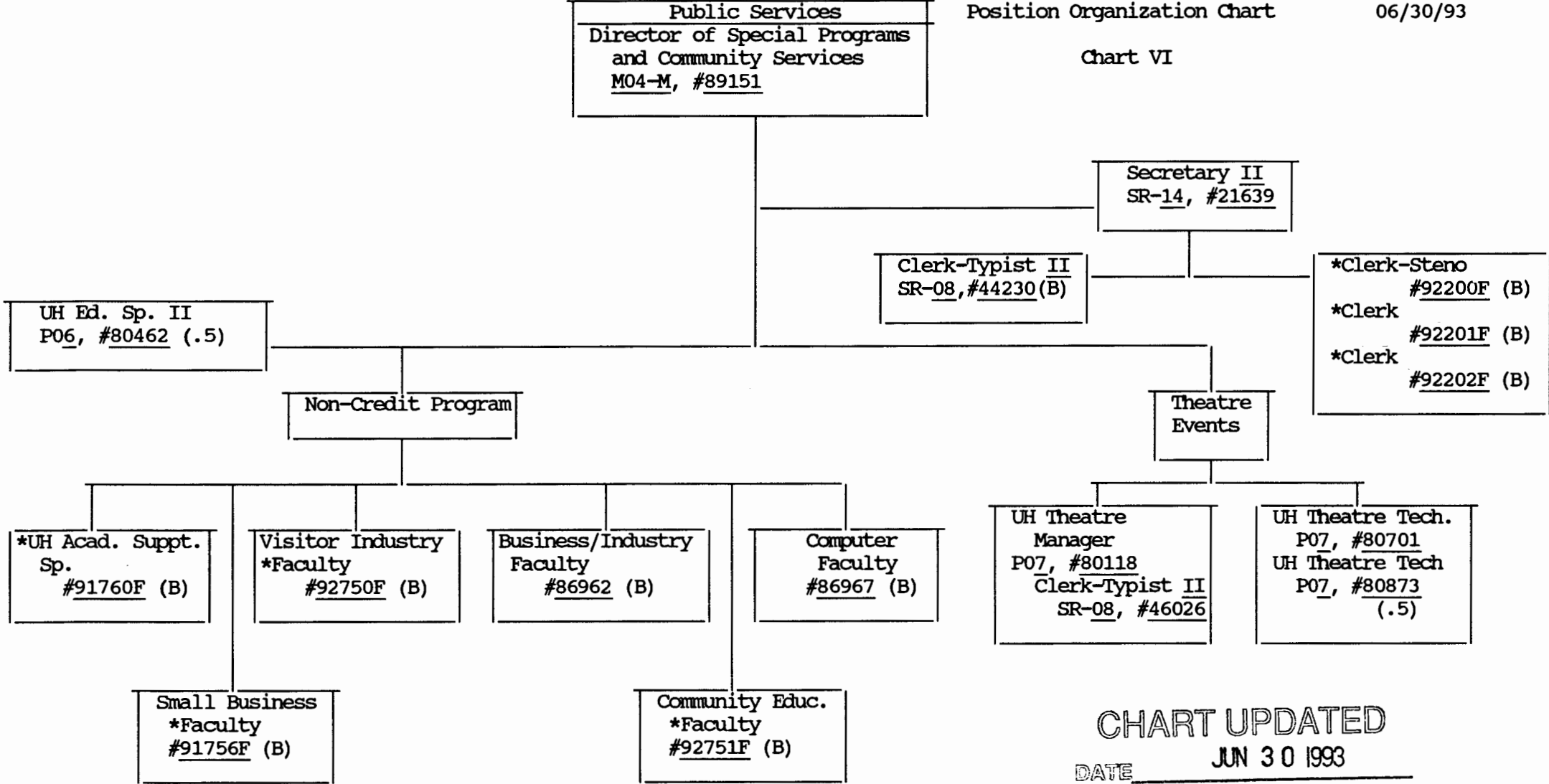


CHART UPDATED  
DATE JUN 30 1993

\*Pending establishment: UH Acad. Suppt. Spec., #91760F  
Faculty, #91756F (B)  
Faculty, #92751F (B)  
Clerk-Steno #90202F (B)  
Clerk #92201F (B)  
Clerk #92202F (B)  
Faculty, #92750F (B)

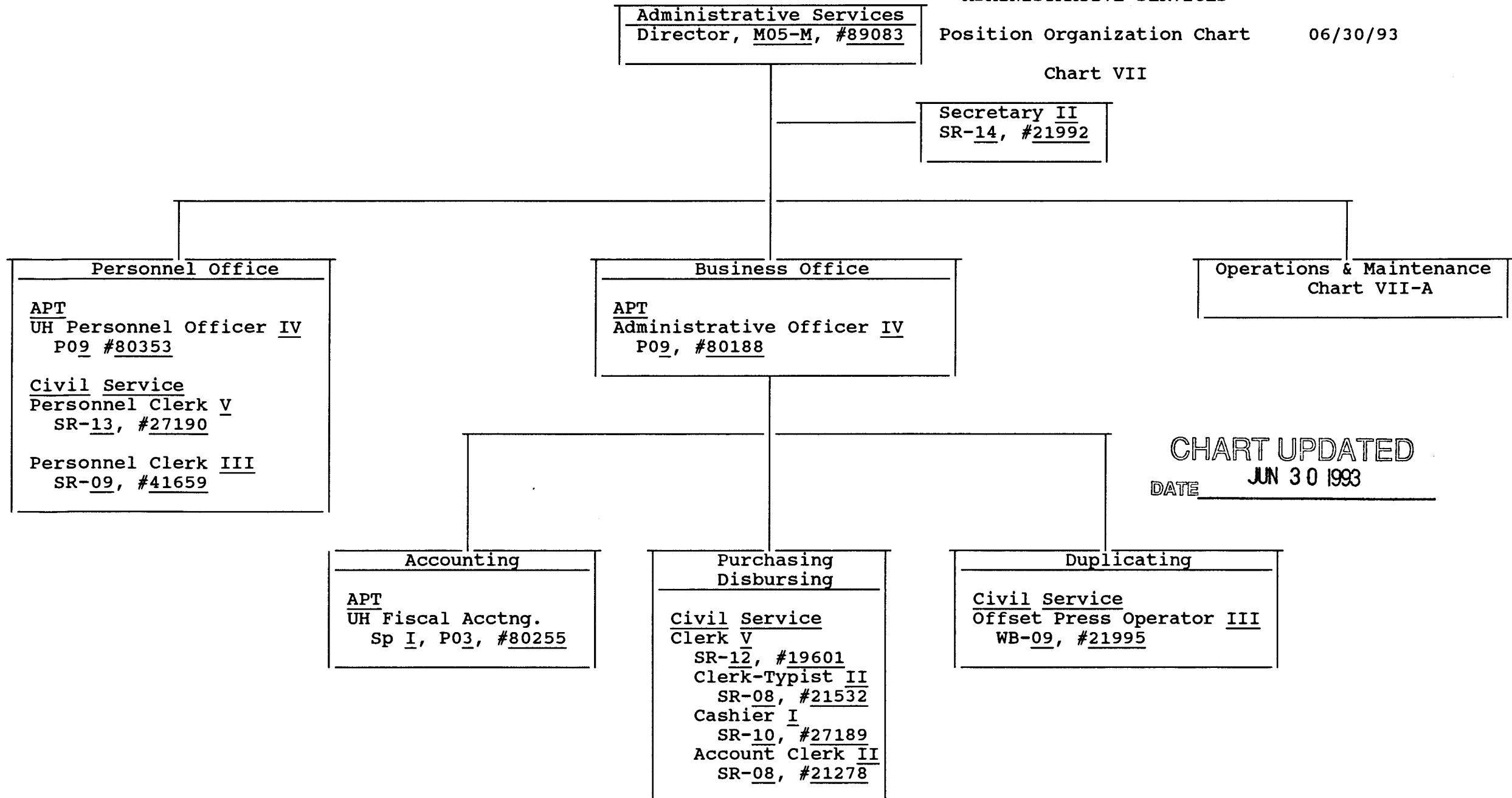
GENERAL FUNDS      6.00  
(B) SPECIAL FUNDS      10.00

STATE OF HAWAII  
UNIVERSITY OF HAWAII  
LEEWARD COMMUNITY COLLEGE

ADMINISTRATIVE SERVICES

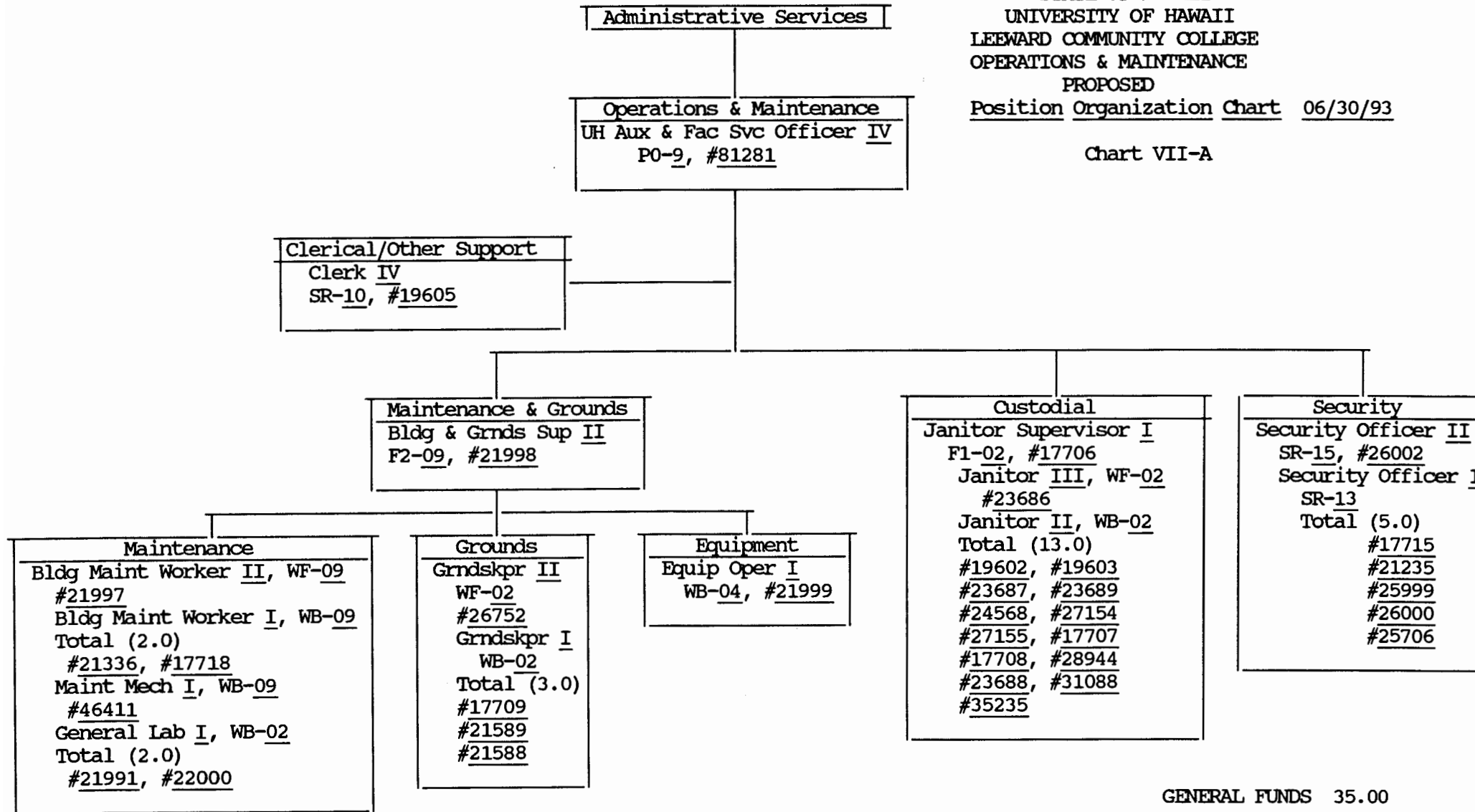
Position Organization Chart 06/30/93

Chart VII



STATE OF HAWAII  
UNIVERSITY OF HAWAII  
LEEWARD COMMUNITY COLLEGE  
OPERATIONS & MAINTENANCE  
PROPOSED  
Position Organization Chart 06/30/93

Chart VII-A



GENERAL FUNDS 35.00

CHART UPDATED  
DATE JUN 30 1993