

State of Hawai'i  
University of Hawai'i  
University of Hawai'i at Manoa

Office: UHM Student Services

Chart: IV

**OFFICE OF THE VICE PRESIDENT FOR STUDENT AFFAIRS  
CHART IV-A**

**OFFICE OF ADMINISTRATIVE SERVICES  
CHART IV-A**

**OFFICE OF THE DIRECTOR OF STUDENT  
EQUITY, EXCELLENCE AND DIVERSITY  
CHART IV-A**

Center for Adults  
Returning to Education  
Chart IV-O

Hawai'i Opportunity  
Program in Education  
Chart IV-P

Operation Kua'ana  
Chart IV-Q

Women's Center  
Chart IV-M

College Opportunities  
Program  
Chart IV-L

KOKUA Program  
Chart IV-S

Operation Manong  
Chart IV-R

**OFFICE OF THE DEAN OF STUDENTS  
AND STUDENT SERVICES (UHM)  
CHART IV-A**

Co-curricular Activities,  
Programs and Services  
Chart IV-D

Counseling and  
Student Development Center  
Chart IV-J

International  
Student Services  
Chart IV-H

Student Employment and  
Cooperative Education  
Chart IV-G

Student Housing Services  
Chart IV-E

Career Placement  
Services  
Chart IV-I

Children's Center  
Chart IV-N

School and College  
Services  
Chart IV-F

Student Health Services  
Chart IV-K

**OFFICE OF THE DIRECTOR OF UNIVERSITYWIDE  
STUDENT AFFAIRS/ASSISTANT TO THE VP  
CHART IV-A**

Admissions and Records  
Chart IV-B

Financial Aid Services  
Chart IV-C

CHART UPDATED

DATE JUN 30 1993

State of Hawai'i  
University of Hawai'i  
University of Hawai'i at Manoa

Office: UHM Student Services

Chart: IV-A

## OFFICE OF THE VICE PRESIDENT FOR STUDENT AFFAIRS

Vice President for Student Affairs, M13, #89103

## ADMINISTRATIVE SUPPORT

Private Secretary II, SR22, #37046  
University Academic Affairs Program  
Officer, M4, #89325

## OFFICE OF ADMINISTRATIVE SERVICES

UH Administrative Officer VI, P13, #80146

## FISCAL SERVICES

Account Clerk III, SR11, #21426

## PERSONNEL SERVICES

UH Personnel Officer II, PO5, #81879  
Personnel Clerk IV, SR11,  
#44556

Position transfer from Counseling and Student  
Development Center (Chart IV-J) to Office of  
the Dean of Students (Chart IV-A).

APPROVED:

*[Signature]* 4/22/94  
Doris Ching  
Vice President for Student Affairs

OFFICE OF THE DIRECTOR OF STUDENT  
EQUITY, EXCELLENCE AND DIVERSITY

Director of Minority Students, M6, #89298  
Clerk Typist II, SR8, #40445  
UH Administrative Officer III, P07,  
#81088

OFFICE OF THE DEAN OF STUDENTS  
AND STUDENT SERVICES (UHM)

Dean of Student Services (UHM), M9, #89133  
Secretary III, SR16, #00745  
Assistant Specialist, S3, #82635  
Jr Specialist, S2, #84173\*

OFFICE OF THE DIRECTOR OF UNIVERSITYWIDE  
STUDENT AFFAIRS/ASSISTANT TO THE VP

Special Assistant to the Vice President, M6, #89309  
Secretary II, SR14, #44996  
UH Institutional Analyst III, P10, #81734  
UH Educational Specialist III, PO9, #81210

\*Position #84173 transfer from Counseling and Student Development Center

CHART UPDATED

JUN 30 1994

State of Hawai'i  
University of Hawai'i  
University of Hawai'i at Manoa

Office: UHM Student Services

Chart: IV-A

## OFFICE OF THE VICE PRESIDENT FOR STUDENT AFFAIRS

Vice President for Student Affairs, M13, #89103

## ADMINISTRATIVE SUPPORT

Private Secretary II, SR22, #37046  
University Academic Affairs Program  
Officer, M4, #89325

## OFFICE OF ADMINISTRATIVE SERVICES

UH Administrative Officer VI, P13, #80146

## FISCAL SERVICES

Account Clerk III, SR11, #21426

## PERSONNEL SERVICES

UH Personnel Officer II, PO5, #81879  
Personnel Clerk IV, SR11,  
#44556

OFFICE OF THE DIRECTOR OF STUDENT  
EQUITY, EXCELLENCE AND DIVERSITY

Director of Minority Students, M6, #89298  
Clerk Typist II, SR8, #40445  
UH Administrative Officer III, P07,  
#81088

OFFICE OF THE DEAN OF STUDENTS  
AND STUDENT SERVICES (UHM)

Dean of Student Services (UHM), M9, #89133  
Secretary III, SR16, #00745  
Assistant Specialist, S3, #82635

OFFICE OF THE DIRECTOR OF UNIVERSITYWIDE  
STUDENT AFFAIRS/ASSISTANT TO THE VP

Special Assistant to the Vice President, M6, #89309  
Secretary II, SR14, #44996  
UH Institutional Analyst III, P10, #81734  
UH Educational Specialist III, PO9, #81210

SUPERSEDED 4/28/94

POSITION TRANSFER

CHART UPDATED

DATE JUN 30 1993

**OFFICE OF THE DIRECTOR OF UNIVERSITYWIDE  
STUDENT AFFAIRS/ASSISTANT TO THE VP**

**ADMISSIONS AND RECORDS**

Specialist, S5, #82701

**ADMINISTRATIVE SUPPORT**

Secretary II, SR14, #00751  
Specialist, S5, #83776  
Secretary I, SR12, #14866  
Clerk Supervisor IV, SR16, #21429  
UH Student Services Specialist IV, P12, #81154 (.3)

**ADMISSIONS AND RESIDENCY**

UH Student Services Specialist IV, P12, #81154 (.7)  
Clerk Supervisor III, SR14, #00748  
Clerk IV, SR10, #00772, #12550  
#12842, #12843  
#13495, #13496  
#18009, #21427  
UH Student Services Specialist III, P09, #80626  
UH Student Services Specialist III, P09, #81414  
UH Student Services Specialist III, P09, #80625  
Clerk IV, SR10, #11496  
Clerk IV, SR10, #26538

**RECORDS AND REGISTRATION**

UH Student Services Specialist IV, P12, #81614  
UH Student Services Specialist III, P09, #80658  
Clerk Supervisor III, SR14, #17447  
Clerk IV, SR10, #00750, #13959  
#14863, #14864  
#14865, #15502  
#17450, #18010  
#18011, #21430  
Clerk III, SR8, #13494  
Clerk III, SR8, #26539  
Clerk Typist II, SR8, #40006  
Scheduler, SR20, #05837

**INFORMATION AND  
COMPUTER SERVICES**

UH Student Services Specialist III, P09, #81070  
UH Computer Specialist III, P07, #80017  
UH Student Services Specialist I, P03, #81071  
Clerk Supervisor II, SR12, #22322  
Clerk IV, SR10, #40004  
Clerk IV, SR10, #40005  
Clerk-Stenographer II, SR9, #22321  
Clerk III, SR8, #15501  
Clerk III, SR8, #40003  
UH Computer Specialist I, P03, #80018

**CHART UPDATED**

DATE **JUN 30 1993**

State of Hawai'i  
University of Hawai'i  
University of Hawai'i at Manoa

Office: UHM Student Services  
Admissions and Records

Chart: IV-B

State of Hawai'i  
University of Hawai'i  
University of Hawai'i at Manoa

Office: UHM Student Services  
Financial Aid Services

Chart: IV-C

**OFFICE OF THE DIRECTOR OF UNIVERSITYWIDE  
STUDENT AFFAIRS/ASSISTANT TO THE VP**

**FINANCIAL AID SERVICES**

Director of Financial Aid, M4, #89184

**ADMINISTRATIVE SUPPORT**

Secretary II, SR14, #05737

**PROGRAM SPECIALISTS**

UH Student Services Specialist III, P09, #81913  
UH Student Services Specialist II, P06, #81608  
UH Student Services Specialist II, P06, #81607  
UH Student Services Specialist II, P06, #81606  
UH Student Services Specialist II, P06, #81609  
UH Student Services Specialist II, P06, #81151  
UH Student Services Specialist II, P06, #80922

**DATA AND CLERICAL SUPPORT SECTION**

Clerical Supervisor III, SR14, #17599  
Clerk-Typist III, SR10, #16967  
Clerk-Typist III, SR10, #15265  
Clerk-Typist III, SR10, #17600  
Clerk-Typist III, SR10, #10929  
Clerk III, SR8, #44397

CHART UPDATED

DATE JUN 30 1993

**OFFICE OF THE DEAN OF STUDENTS AND STUDENT SERVICES (UHM)**

State of Hawai'i  
University of Hawai'i  
University of Hawai'i at Manoa

Office: UHM Student Services  
Co-curricular Activities,  
Programs and Services

Chart: IV-D

**CO-CURRICULAR ACTIVITIES, PROGRAMS AND SERVICES**

Director of Bureau of Student Activities, M4, #89190

**ADMINISTRATIVE AND FISCAL SUPPORT**

UH Administrative Officer III, P7, #80163 (R)  
UH Adm/Fiscal Support Specialist, P1, #80649 (R)  
Account Clerk III, SR11, #25700 (R)  
Account Clerk II, SR8, #45362 (R)

**CLERICAL SUPPORT**

Secretary II, SR14, #13587  
Clerk-Typist II, SR8, #28134 (R)  
Clerk-Typist II, SR8, #25699 (R)  
Clerk II, SR6, #25698 (R)

**CHART UPDATED**

DATE JUN 30 1993

**INTRAMURAL SPORTS**

Specialist, S5, #83512  
Specialist, S5, #85083  
Junior Specialist, S2, #83788  
Clerk-Typist II, SR8, #26460

**STUDENT LEADERSHIP DEVELOPMENT AND  
CO-CURRICULAR  
INTERVENTION PROGRAMS**

Assistant Specialist, S3, #82864  
Junior Specialist, S2, #83668  
Junior Specialist, S2, #82573  
Assistant Specialist, S3, #82597  
UH Adm/Fiscal Support Specialist, P1, #81510 (R)  
UH Student Services Specialist II, P6, #81374 (R)  
UH Student Services Spec. II, P6, #80025 (R)  
Assistant Specialist, S3, #88334 (R)  
UH Adm/Fiscal Support Specialist, P1, #81137 (R)  
UH Publication Sp III, P7, #81186 (R)

**OPERATIONAL PROGRAMS,  
FACILITIES AND SERVICES**

UH Student Services Specialist III, P9, #80660 (R)  
Building Maintenance I, WB9, #28597 (R)  
Janitor II, WB2, #25329 (R)  
Janitor II, WB2, #25392 (R)  
Janitor II, WB2, #44089 (R)  
UH Student Services Specialist II, P6, #80631 (R)  
UH Student Services Sp I, P3, #80942 (R)  
UH Student Services Specialist, #92524F (R) (TBE)\*

Office: UHM Student Services  
Student Housing Services

Chart: IV-E

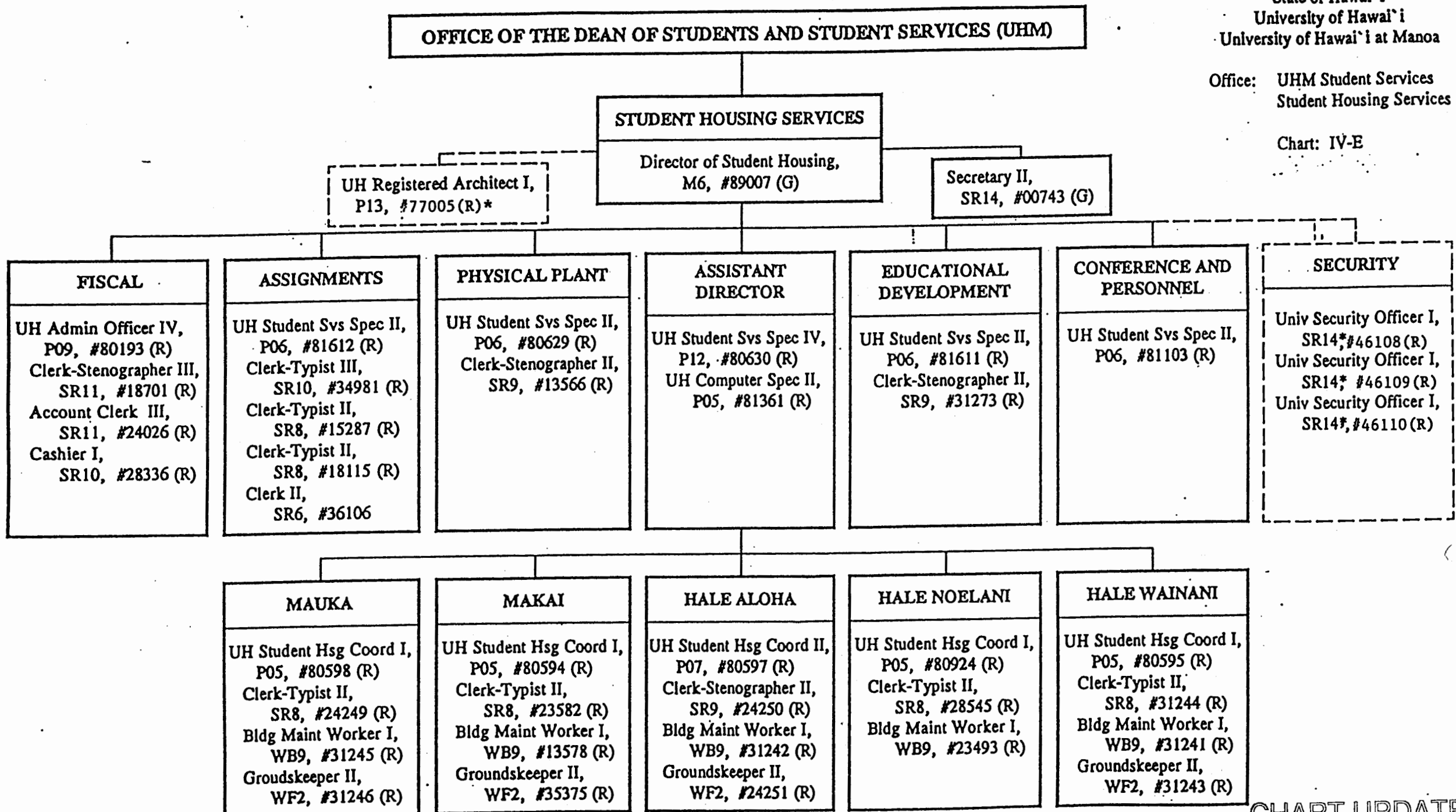


CHART UPDATED

DATE JUN 30 1993

State of Hawai'i  
University of Hawai'i  
University of Hawai'i at Manoa

Office: UHM Student Services  
School and College Services

Chart: IV-F

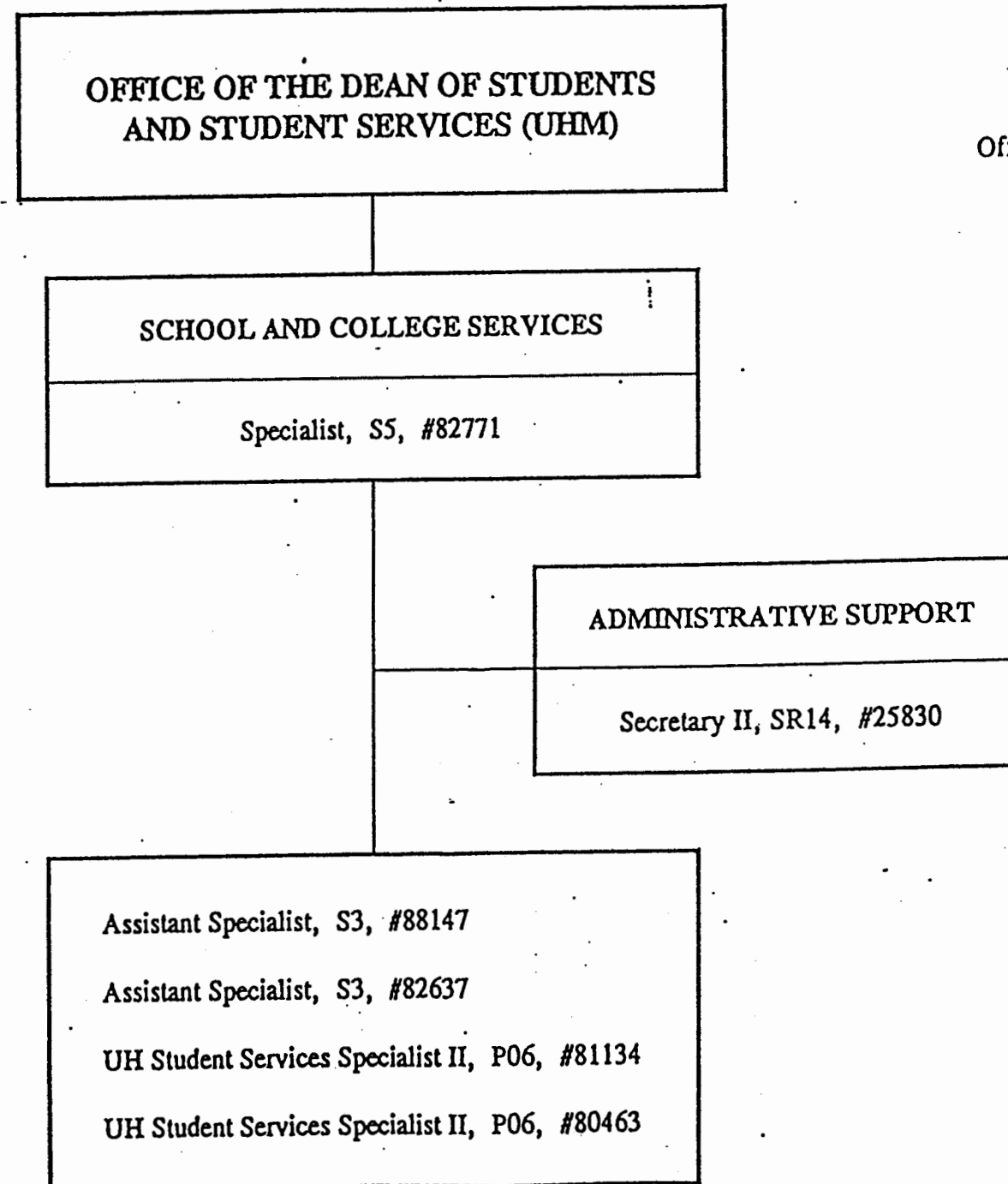


CHART UPDATED  
DATE JUN 30 1993



State of Hawai'i  
University of Hawai'i  
University of Hawai'i at Manoa

Office: UHM Student Services  
Student Employment and  
Cooperative Education

Chart: IV-G

**OFFICE OF THE DEAN OF STUDENTS  
AND STUDENT SERVICES (UHM)**

**STUDENT EMPLOYMENT AND COOPERATIVE EDUCATION**

UH Student Services Specialist IV, P12, #80661

**ADMINISTRATIVE SUPPORT**

UH Student Services Specialist, #92573F (TBE)\*  
Graduate Assistant, #92575F (TBE)\*\* (.50)  
Secretary II, SR14, #11046  
Clerk Typist II, SR-8, #46550

**STUDENT EMPLOYMENT SERVICES**

UH Student Services Specialist II, P06, #81063  
UH Student Services Specialist I, P03, #81481  
UH Educ and Acad Support Spec, P01, #80453S

**COOPERATIVE EDUCATION**

Junior Specialist, S2, #88117  
Junior Specialist, S2, #88121S  
Junior Specialist, S2, #88145  
Junior Specialist, S2, #82644  
Junior Specialist, S2, #82642

\* To Be Established

\*\* To Be Established With Variance To UH Educational And Academic Support Specialist

**CHART UPDATED**  
DATE **JUN 30 1993**

**OFFICE OF THE DEAN OF STUDENTS  
AND STUDENT SERVICES (UHM)**

**INTERNATIONAL STUDENT SERVICES**

Assistant Specialist, S3, #84594

**ADMINISTRATIVE SUPPORT**

Secretary II, SR14, #00763

Clerk-Stenographer II, SR9, #12763

Junior Specialist, S2, #88126

Junior Specialist, S2, #83747

Junior Specialist, S2, #88327

State of Hawai'i  
University of Hawai'i  
University of Hawai'i at Manoa

Office: UHM Student Services  
International Student Services

Chart: IV-H

**CHART UPDATED**  
DATE JUN 30 1993

**OFFICE OF THE DEAN OF STUDENTS  
AND STUDENT SERVICES (UHM)**

**CAREER PLACEMENT SERVICES**

Specialist, S5, #83382

**ADMINISTRATIVE SUPPORT**

Secretary II, SR14, #14337

Clerk-Stenographer II, SR9, #42979

Junior Specialist, S2, #88125

Junior Specialist, S2, #83548

Assistant Specialist, S3, #88325

Junior Specialist, S2, #88326

UH Student Services Specialist II, P06, #81434

State of Hawai`i  
University of Hawai`i  
University of Hawai`i at Manoa

Office: UHM Student Services  
Career Placement Services

Chart: IV-I

**CHART UPDATED**  
DATE JUN 30 1993

State of Hawai'i  
University of Hawai'i  
University of Hawai'i at Manoa

Office: UHM Student Services  
Counseling and Student  
Development Center

Chart: IV-J


OFFICE OF THE DEAN OF STUDENTS  
AND STUDENT SERVICES (UHM)

COUNSELING AND STUDENT  
DEVELOPMENT CENTER

Specialist, S5, #83151

Position transfer from Counseling and Student  
Development Center (Chart IV-J) to Office of  
the Dean of Students (Chart IV-A).

APPROVED:

 4/28/94  
Doris Ching  
Vice President for Student Affairs

ADMINISTRATIVE SUPPORT

Secretary II, SR14, #00746  
Clerk Typist II, SR8, #15354

CHART UPDATED

DATE \_\_\_\_\_

LEARNING ASSISTANCE

Assistant Specialist, S3, #84554  
Assistant Specialist, S3, #88143

TESTING

UH Student Services Specialist II, P06, #80632

COUNSELING

Specialist, S5, #82048 (.50)  
Specialist, S5, #83635 (.50)  
Specialist, S5, #82695  
Assistant Specialist, S3, #82698  
Assistant Specialist, S3, #83035  
Specialist, S5, #83114  
Assistant Specialist, S3, #84139  
~~Associate Specialist, S4, #84173 \*~~

**OFFICE OF THE DEAN OF STUDENTS  
AND STUDENT SERVICES (UHM)**

State of Hawai'i  
University of Hawai'i  
University of Hawai'i at Manoa

Office: UHM Student Services  
Counseling and Student  
Development Center

Chart: IV-J

**COUNSELING AND STUDENT  
DEVELOPMENT CENTER**

Specialist, S5, #83151

SUPERSEDED 7/28/97

P.S. TRANSFER 84173

**ADMINISTRATIVE SUPPORT**

Secretary II, SR14, #00746  
Clerk Typist II, SR8, #15354

**CHART UPDATED**

DATE **JUN 30 1993**

**LEARNING ASSISTANCE**

Assistant Specialist, S3, #84554  
Assistant Specialist, S3, #88143

**TESTING**

UH Student Services Specialist II, P06, #80632

**COUNSELING**

Specialist, S5, #82048 (.50)  
Specialist, S5, #83635 (.50)  
Specialist, S5, #82695  
Assistant Specialist, S3, #82698  
Assistant Specialist, S3, #83035  
Specialist, S5, #83114  
Assistant Specialist, S3, #84139  
Associate Specialist, S4, #84173

**OFFICE OF THE DEAN OF STUDENTS  
AND STUDENT SERVICES (UHM)**

**STUDENT HEALTH SERVICES**

Specialist, S5, #82341

**ADMINISTRATIVE SUPPORT**

Assistant Specialist, S3, #83539  
Secretary II, SR14, #15353  
Clerk-Stenographer II, SR9, #21512  
Medical Records Technician VI, SR13, #03723  
Clerk-Typist II, SR8, #35147 (.50)

**MEDICAL STAFF**

Specialist, S5, #84576 (.50)  
Specialist, S5, #84576A (.50)  
Specialist, S5, #83261 (.50)  
Specialist, S5, #83397 (.50)  
Specialist, S5, #84581 (.50)

**NURSING STAFF**

Registered Professional Nurse IV,  
SR22, #10312  
Registered Professional Nurse III,  
SR20, #13616  
Registered Professional Nurse III,  
SR20, #13614  
Registered Professional Nurse III,  
SR20, #22672  
Registered Professional Nurse III,  
SR20, #13615  
Registered Professional Nurse III,  
SR20, #18091  
Registered Professional Nurse III,  
SR20, #13730 (.50)

**FAMILY PLANNING CLINIC**

Registered Professional Nurse IV,  
SR22, #41706

**LABORATORY**

UH Medical Technician,  
P07, #80671 (.50)

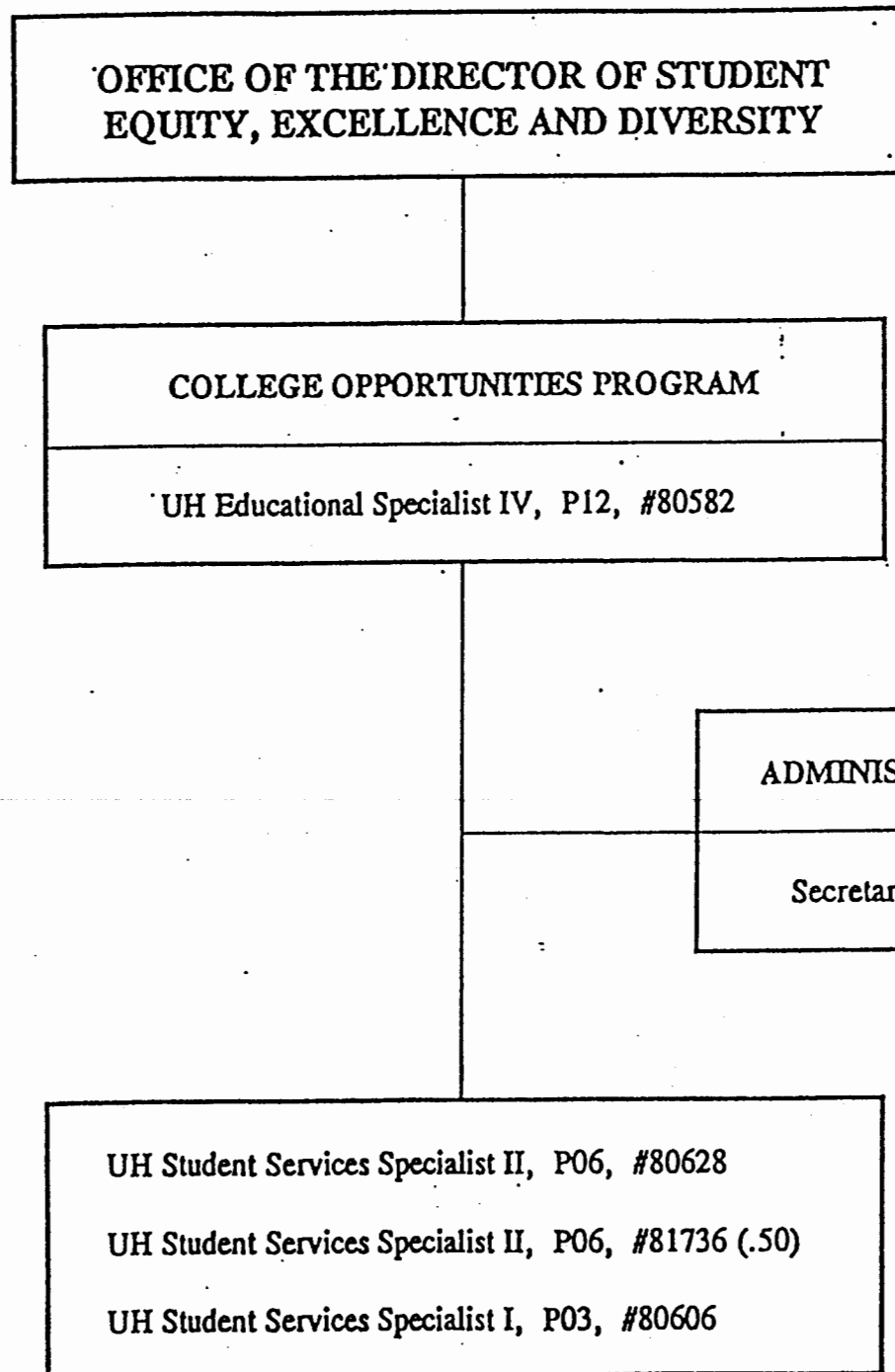
**CHART UPDATED**

DATE **JUN 30 1993**

State of Hawai'i  
University of Hawai'i  
University of Hawai'i at Manoa

Office: UHM Student Services  
College Opportunities Program

Chart: IV-L



**CHART UPDATED**  
DATE JUN 30 1993

State of Hawai'i  
University of Hawai'i  
University of Hawai'i at Manoa

Office: UHM Student Services  
Women's Center

Chart: IV-M

OFFICE OF THE DIRECTOR OF STUDENT  
EQUITY, EXCELLENCE AND DIVERSITY

WOMEN'S CENTER

Junior Specialist, S2, #88123 (.50)

Junior Specialist, S2, #88144 (.50)

Clerk-Typist II, SR8, #44988 (.50)

CHART UPDATED

DATE JUN 30 1993



**OFFICE OF THE DEAN OF STUDENTS  
AND STUDENT SERVICES (UHM)**

**CHILDREN'S CENTER**

Specialist, S5, #88318

**ADMINISTRATIVE SUPPORT**

UH Educational Associate I, P03, #80232

**TEACHING STAFF**

UH Educational Associate III, P07, #80029  
UH Educational Associate II, P05, #80109  
UH Educational Associate II, P05, #80496S(.75)  
UH Educational Associate I, P03, #80233  
UH Educational Associate I, P03, #80234S  
UH Educational Associate I, P03, #80424S  
UH Educational Associate I, P03, #80455S

State of Hawai'i  
University of Hawai'i  
University of Hawai'i at Manoa

Office: UHM Children's Center

Chart: IV-N

**CHART UPDATED**  
DATE **JUN 30 1993**

State of Hawai'i  
University of Hawai'i  
University of Hawai'i at Manoa

Office: UHM Student Services  
Center for Adults  
Returning to Education

Chart: IV-O

**OFFICE OF THE DIRECTOR OF STUDENT  
EQUITY, EXCELLENCE AND DIVERSITY**

**CENTER FOR ADULTS  
RETURNING TO EDUCATION**

Assistant Specialist, S3, #88317  
Junior Specialist, S2, #88762  
Clerk Typist II, SR8, #43364 (.50)

**CHART UPDATED**

DATE JUN 30 1993

State of Hawai`i  
University of Hawai`i  
University of Hawai`i at Manoa

Office: UHM Student Services  
Hawai`i Opportunity  
Program in Education

Chart: IV-P

**OFFICE OF THE DIRECTOR OF STUDENT  
EQUITY, EXCELLENCE AND DIVERSITY**

**HAWAI`I OPPORTUNITY  
PROGRAM IN EDUCATION**

UH Educational Specialist, #92516F (TBE)\*

**CHART UPDATED**  
DATE JUN 30 1993

\* To Be Established

State of Hawai'i  
University of Hawai'i  
University of Hawai'i at Manoa

Office: UHM Student Services  
Operation Kua'ana

Chart: IV-Q

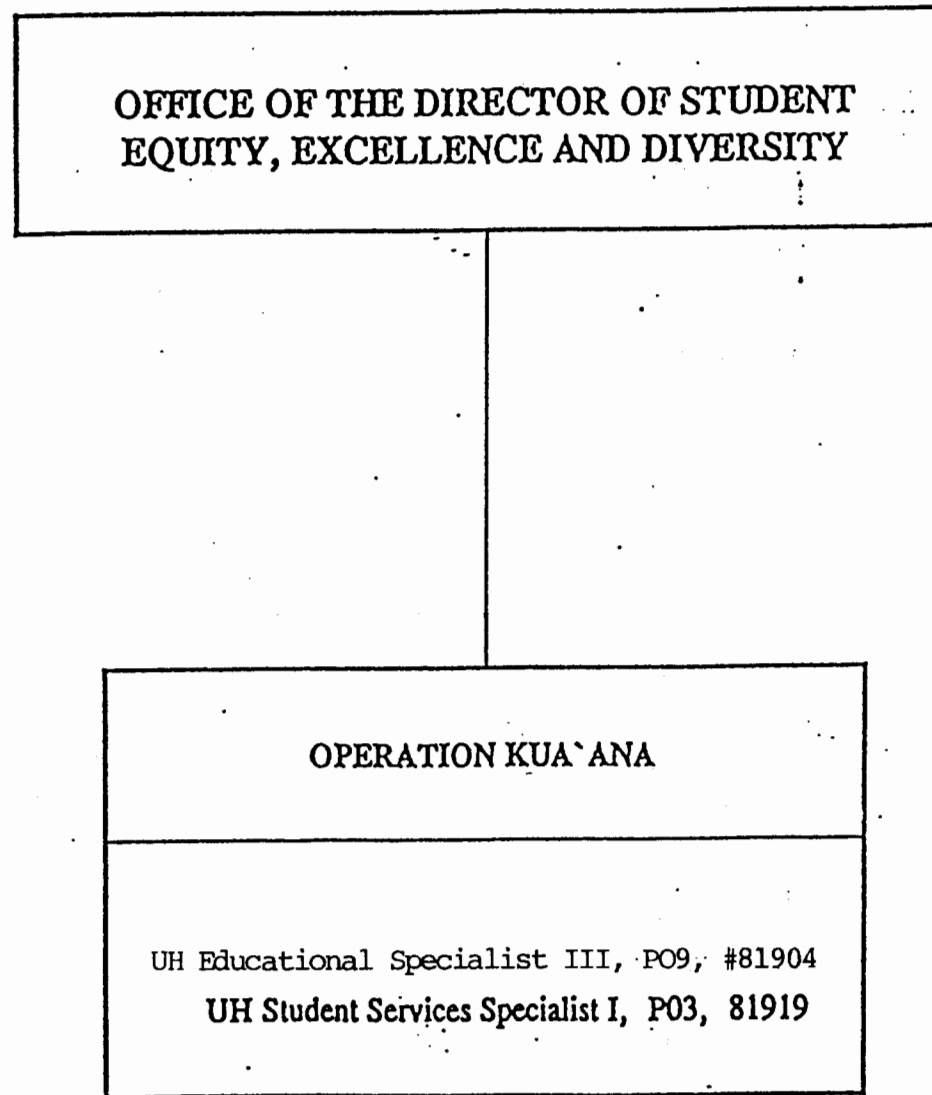


CHART UPDATED  
DATE JUN 30 1993

State of Hawai'i  
University of Hawai'i  
University of Hawai'i at Manoa

Office: UHM Student Services  
Operation Manong

Chart: IV-R

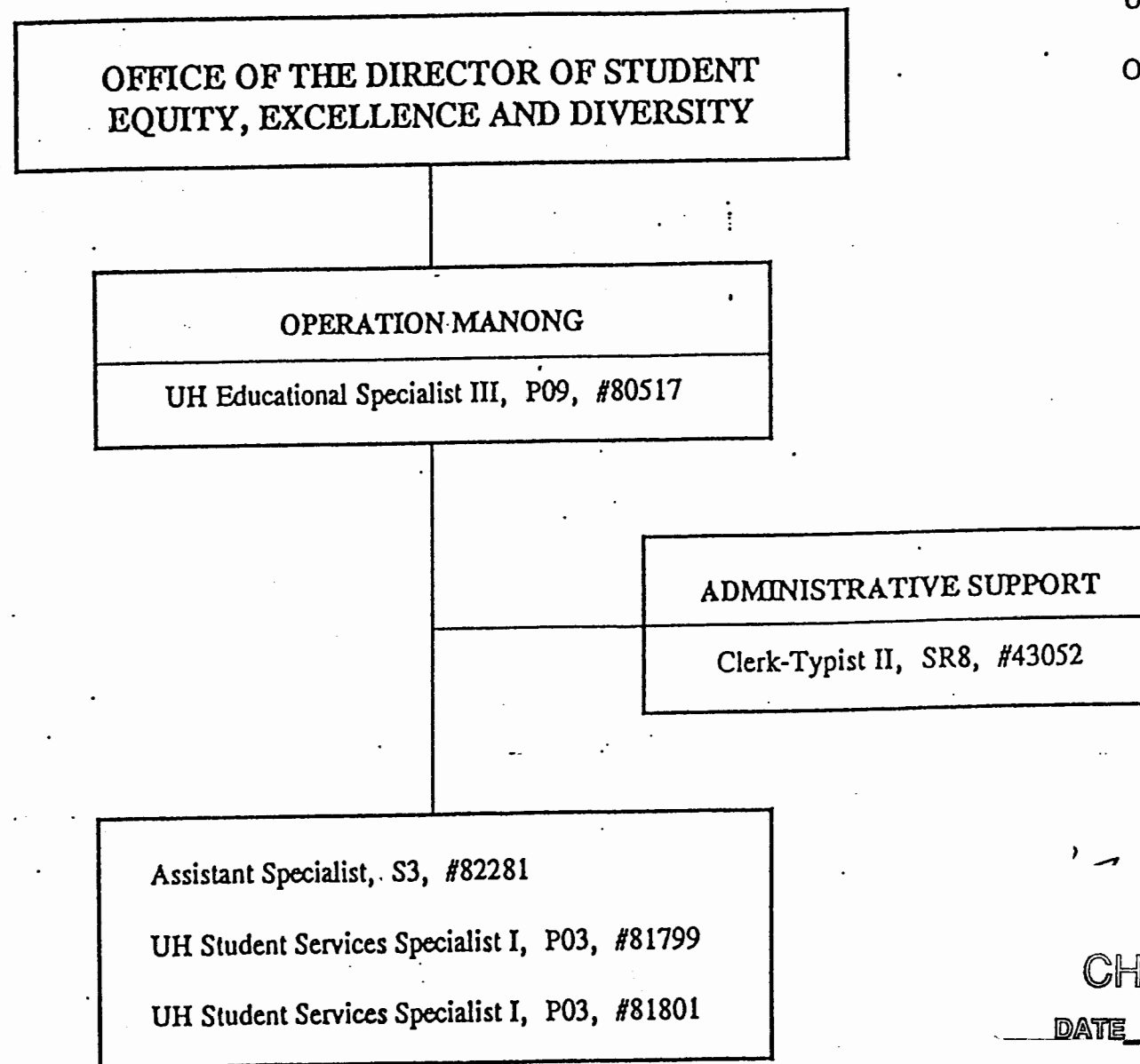


CHART UPDATED

DATE JUN 30 1993

**OFFICE OF THE DIRECTOR OF STUDENT  
EQUITY, EXCELLENCE AND DIVERSITY**

**KOKUA PROGRAM**

Educational Specialist III, P09, #80666

- Educational Specialist I, P03, #80636
- Educational Specialist I, P03, #80608
- Educational Specialist II, P06, #81566
- Clerk Typist III, SR10, #42421

State of Hawai`i  
University of Hawai`i  
University of Hawai`i at Manoa

Office: UHM Student Services  
KOKUA Program

Chart IV-S

**CHART UPDATED**  
DATE JUN 30 1993