

State of Hawaii  
University of Hawaii at Manoa  
College of Business Administration

Chart I

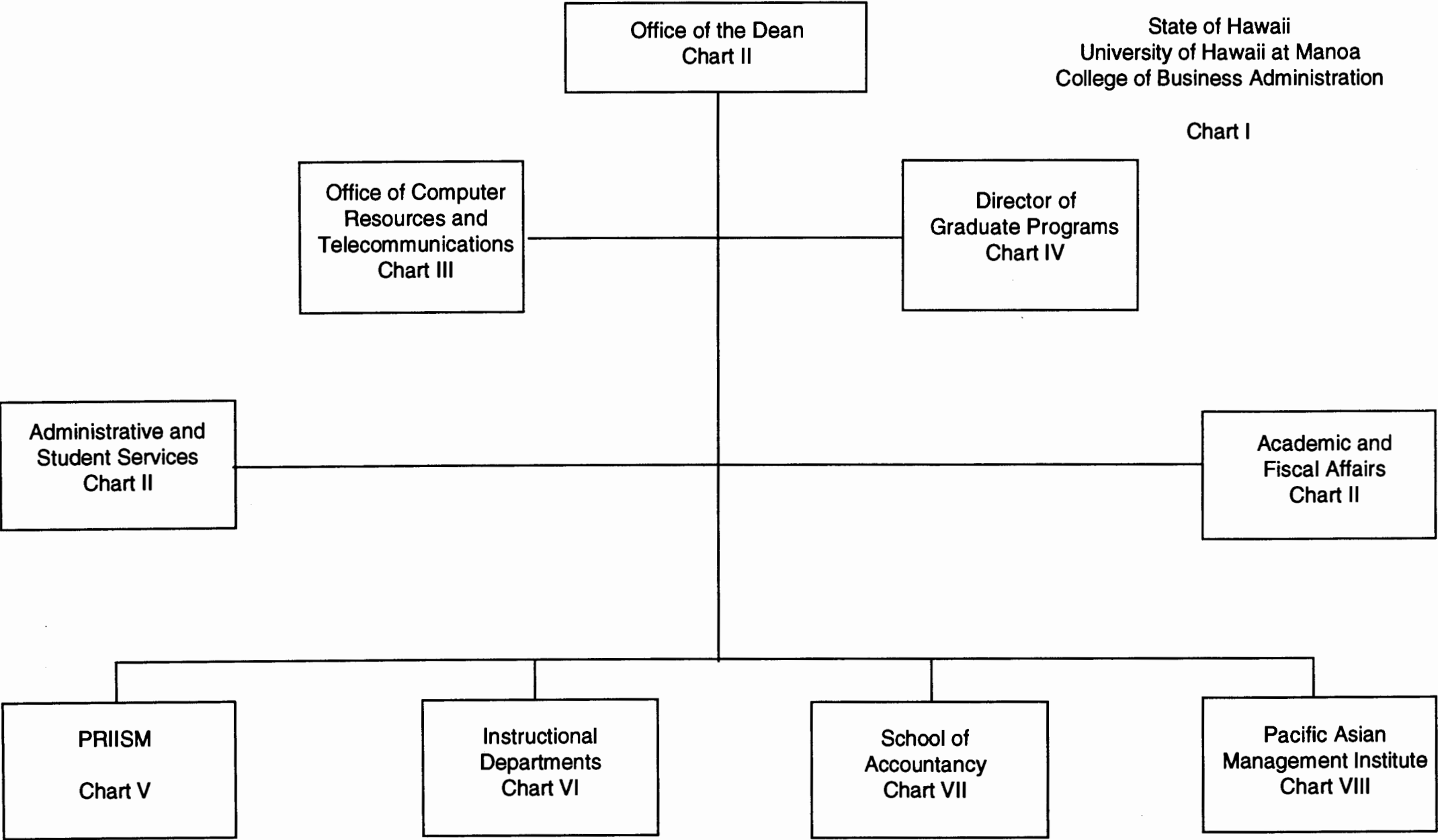


CHART UPDATED  
JUN 30 1993  
DATE \_\_\_\_\_

State of Hawaii  
University of Hawaii at Manoa  
College of Business Administration

Office of the Dean  
(9.0 General Fund Position Count)

Position Organization  
Chart II

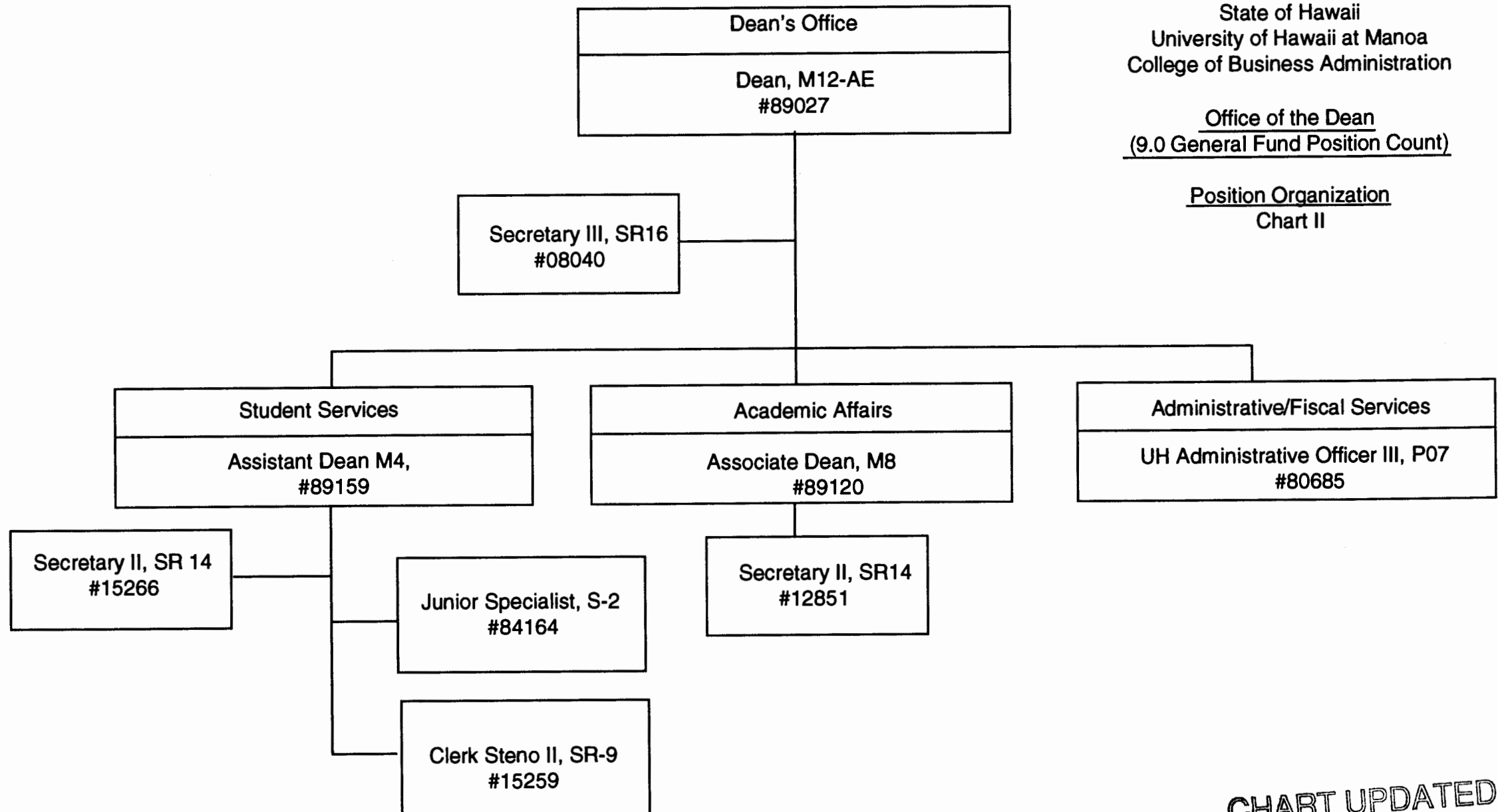
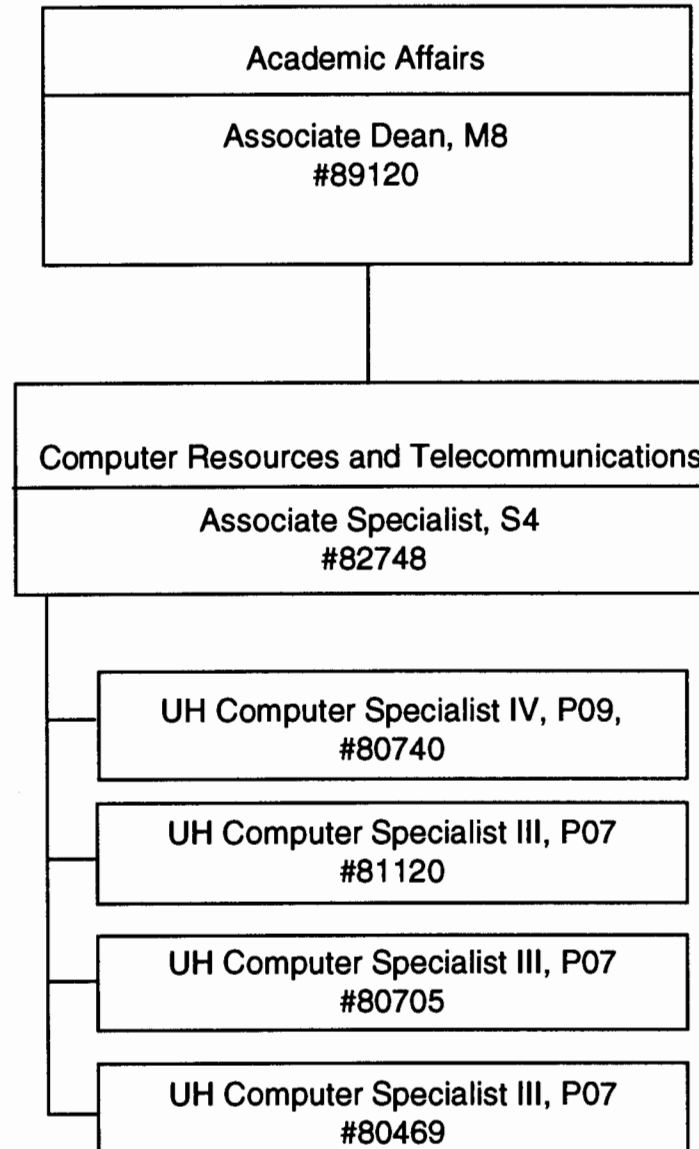


CHART UPDATED  
DATE JUN 30 1993

State of Hawaii  
University of Hawaii at Manoa  
College of Business Administration

Office of Computer Resources  
and Telecommunications

Chart III

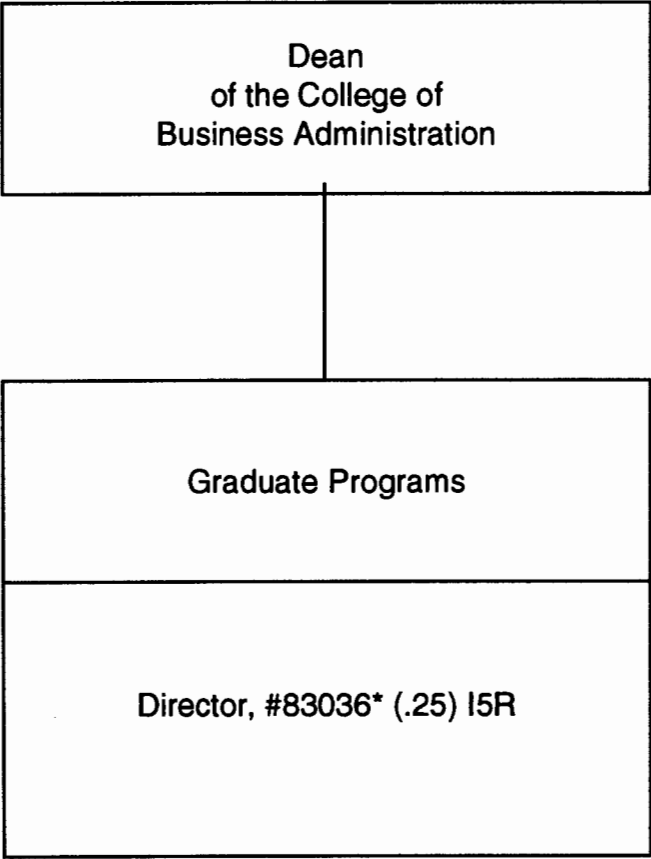


**CHART UPDATED**  
DATE JUN 30 1993

State of Hawaii  
University of Hawaii at Manoa  
College of Business Administration

Graduate Programs

Chart IV



\* Instructional position with  
administrative duties

CHART UPDATED  
DATE JUN 30 1993

State of Hawaii  
University of Hawaii at Manoa  
College of Business Administration

Pacific Research Institute for  
Information Systems and Management  
(PRIISM)

Chart V

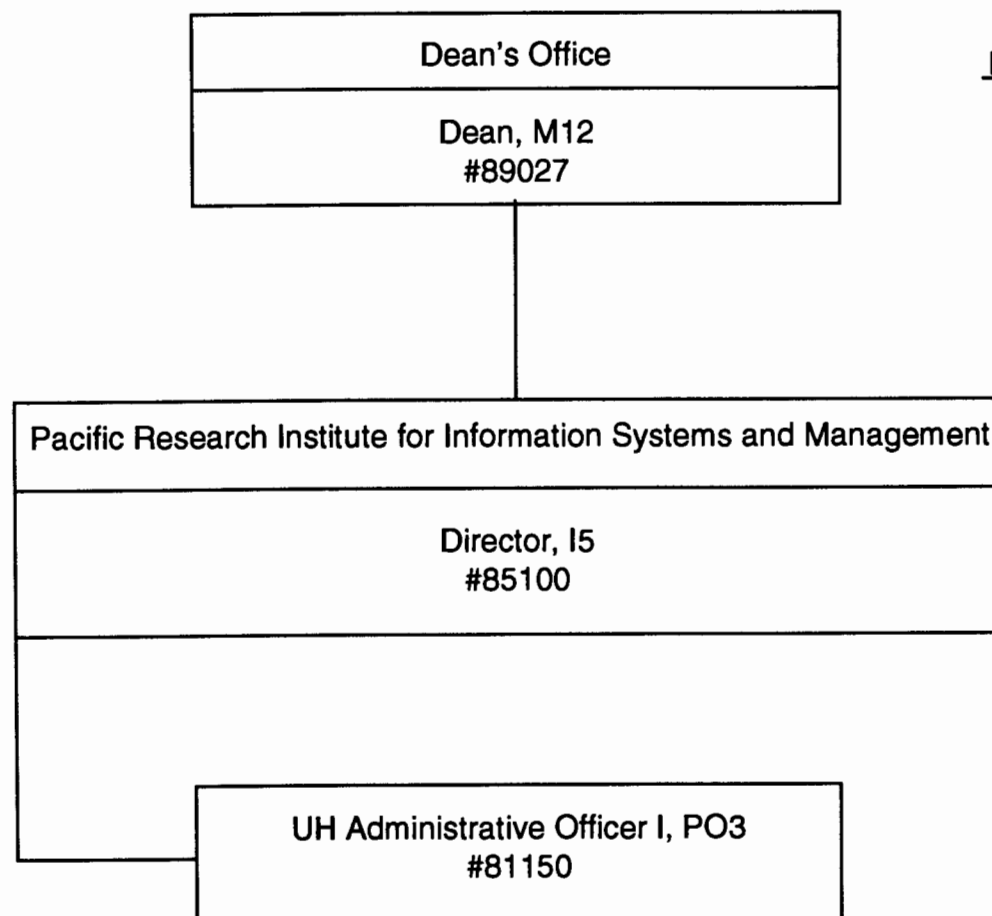


CHART UPDATED  
DATE JUN 30 1993

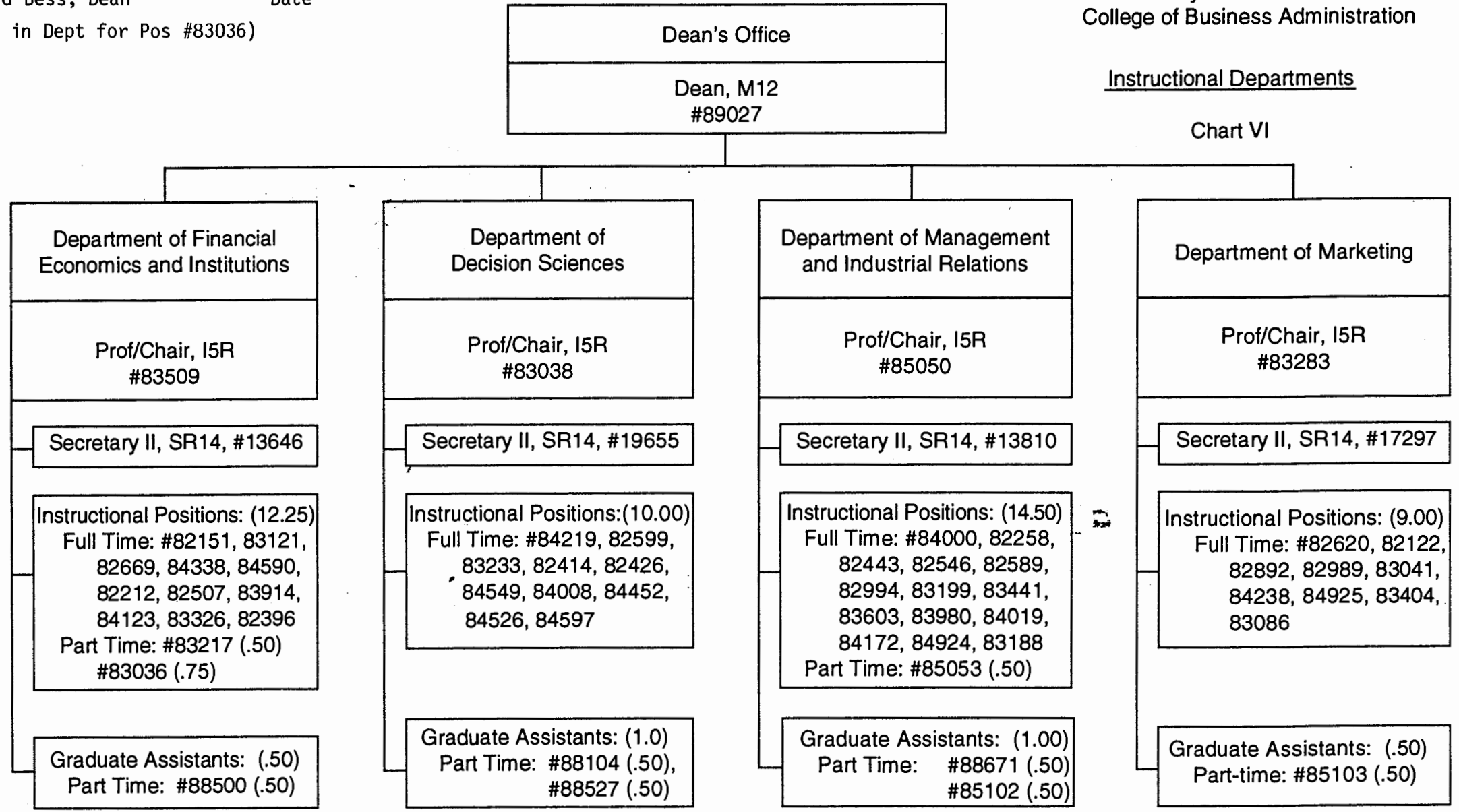
David Bess 6/28/94  
David Bess, Dean Date

(Change in Dept for Pos #83036)

State of Hawaii  
University of Hawaii at Manoa  
College of Business Administration

Instructional Departments

Chart VI

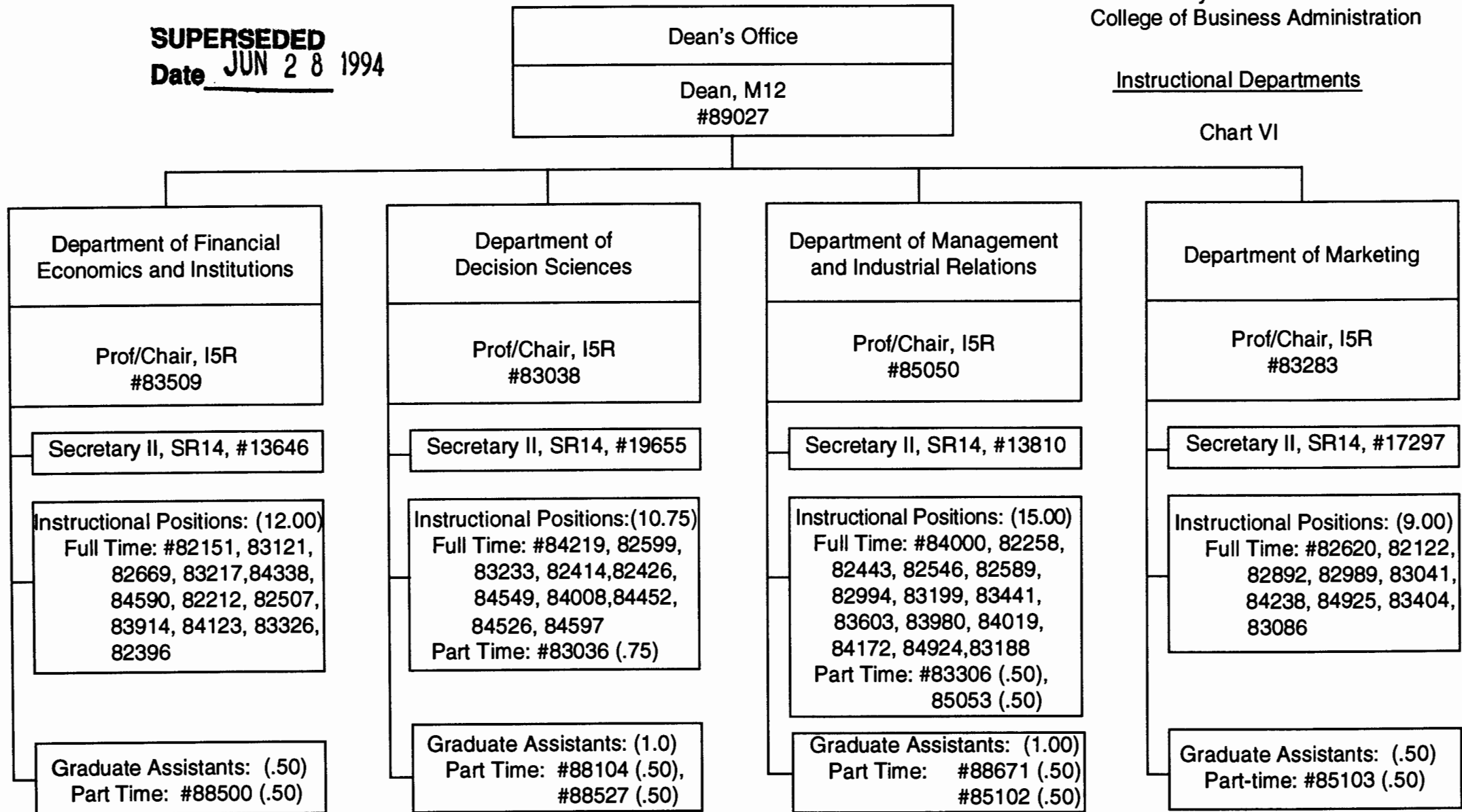


**SUPERSEDED**  
Date JUN 28 1994

State of Hawaii  
University of Hawaii at Manoa  
College of Business Administration

Instructional Departments

Chart VI



**CHART UPDATED**  
DATE JUN 30 1993

State of Hawaii  
University of Hawaii at Manoa  
College of Business Administration

School of Accountancy

Chart VII

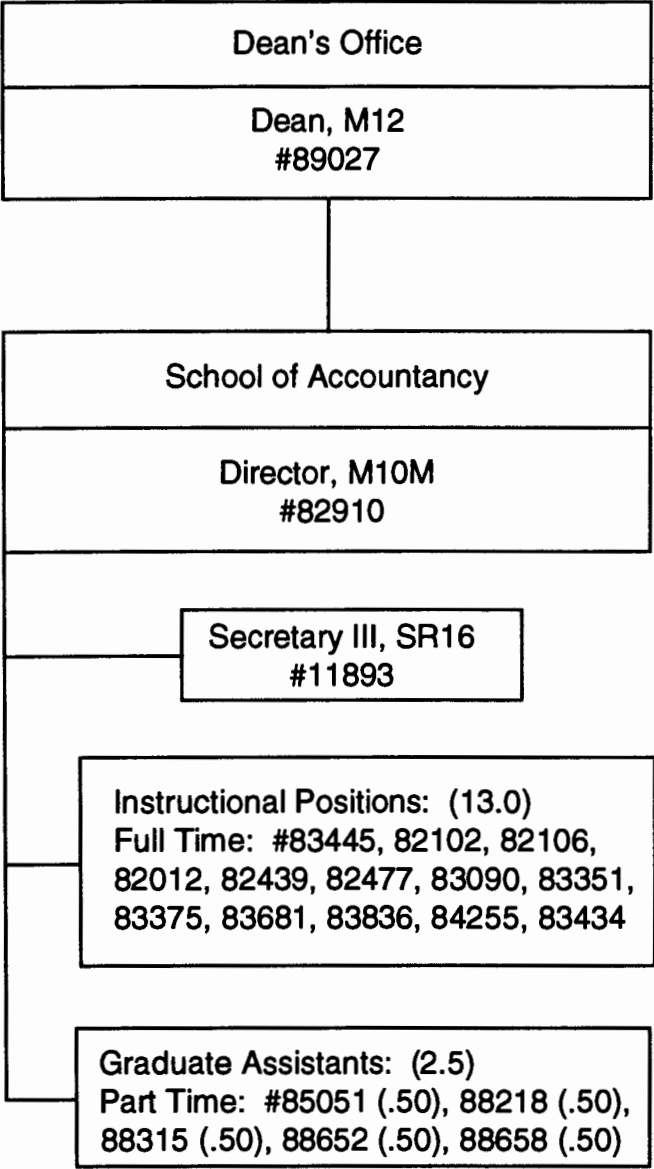


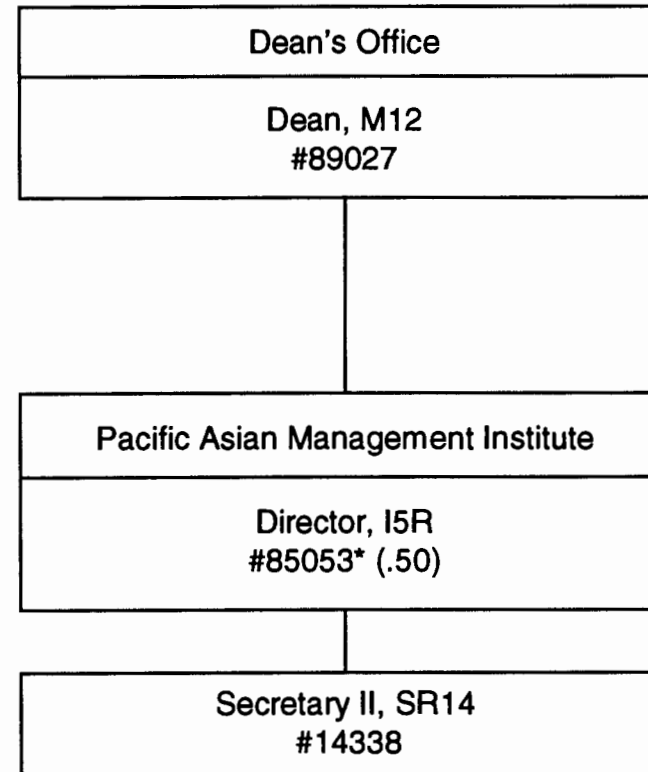
CHART UPDATED  
JUN 30 1993  
DATE \_\_\_\_\_



State of Hawaii  
University of Hawaii at Manoa  
College of Business Administration

Pacific Asian Management Institute  
(PAMI)

Chart VIII



\* Instructional position with  
administrative duties

CHART UPDATED  
DATE JUN 30 1993