
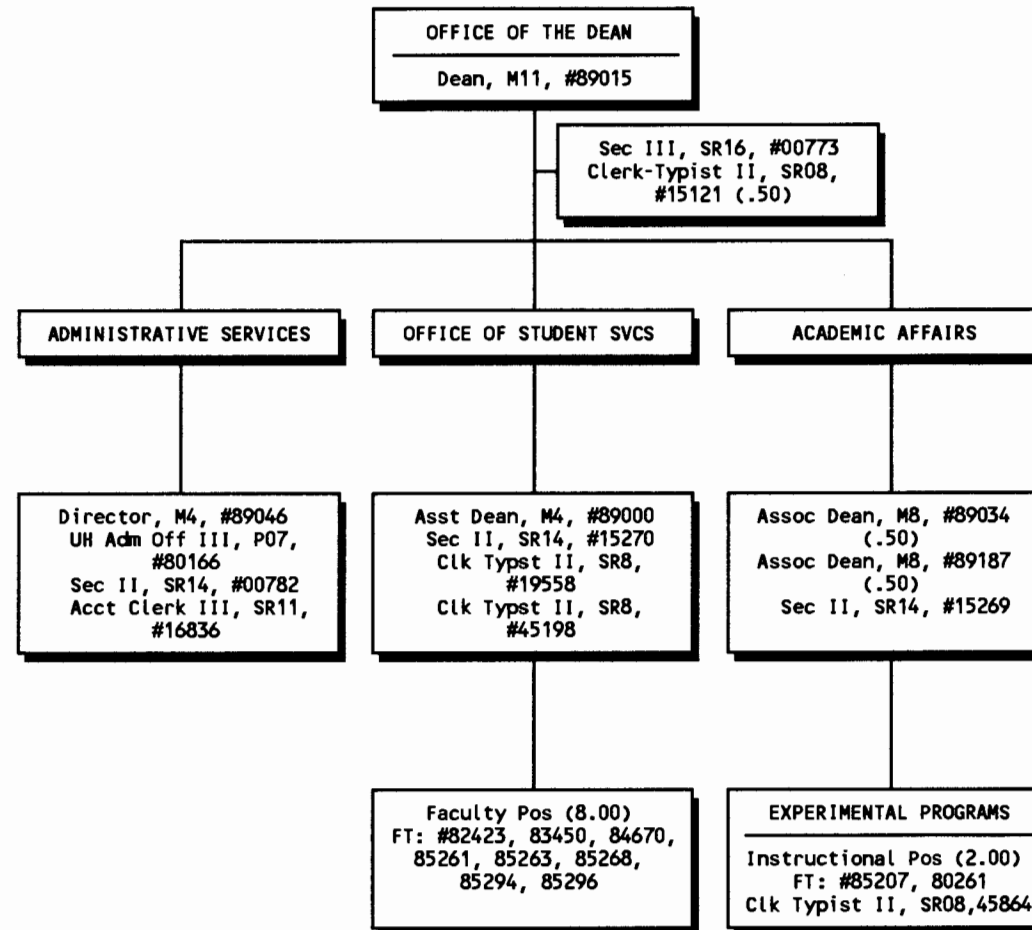


CHART UPDATED
DATE JAN 30 1983


DEAN, COLLEGE OF EDUCATION

STATE OF HAWAII/UNIVERSITY OF HAWAII
UNIVERSITY OF HAWAII AT MANOA
COLLEGE OF EDUCATION
POSITION ORGANIZATION CHART - CHART II



*Position #93546F - Establishment Pend.

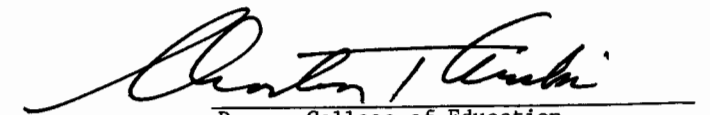

Dean, College of Education

CHART UPDATED

DATE JUN 30 1983

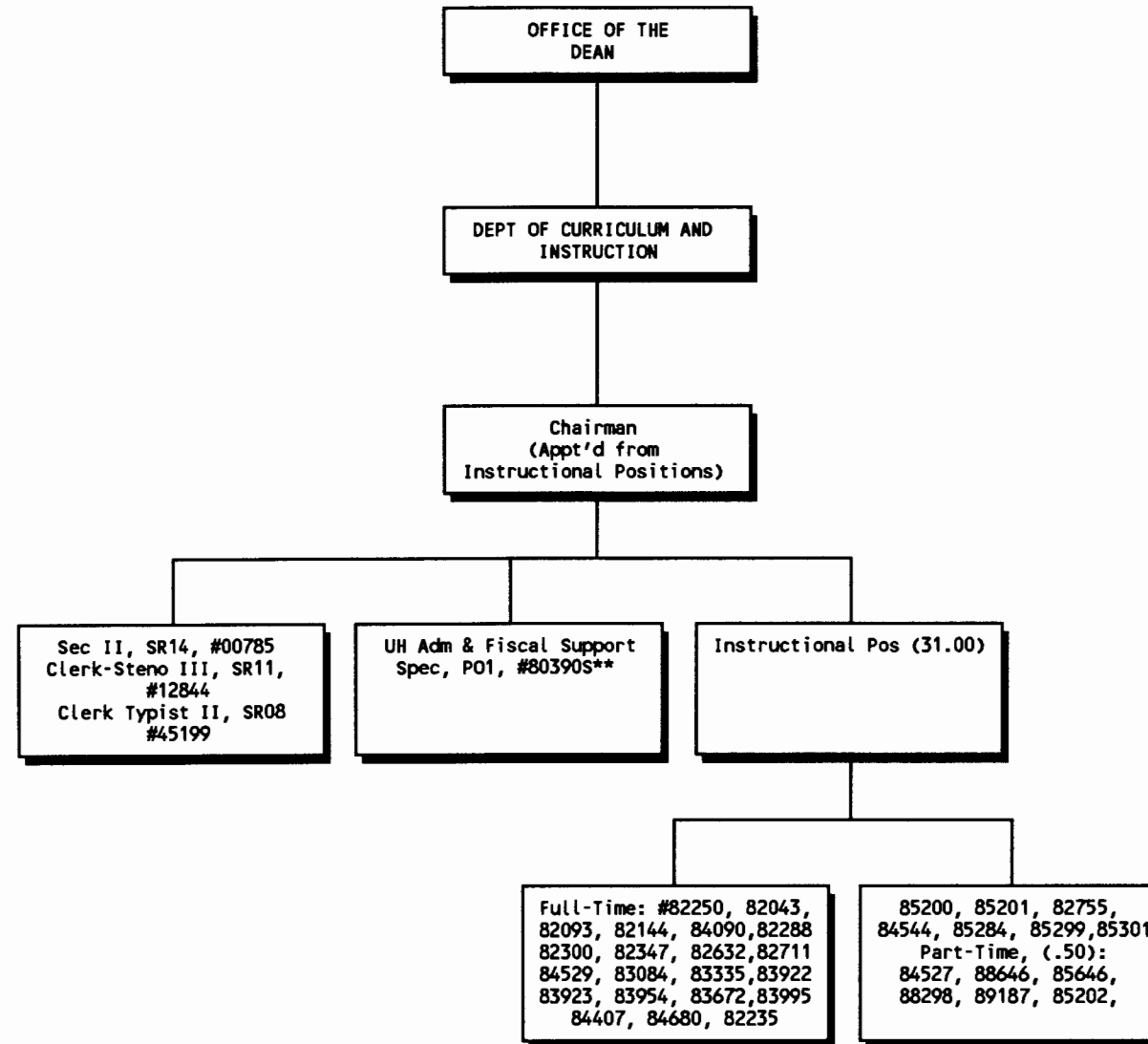



CHART UPDATED
DATE JUN 30 1993

*Pending Establishment
**Temporary position: Center
for Economic Education


DEAN, COLLEGE OF EDUCATION

STATE OF HAWAII/UNIVERSITY OF HAWAII
UNIVERSITY OF HAWAII AT MANOA
COLLEGE OF EDUCATION
POSITION ORGANIZATION CHART - CHART IV

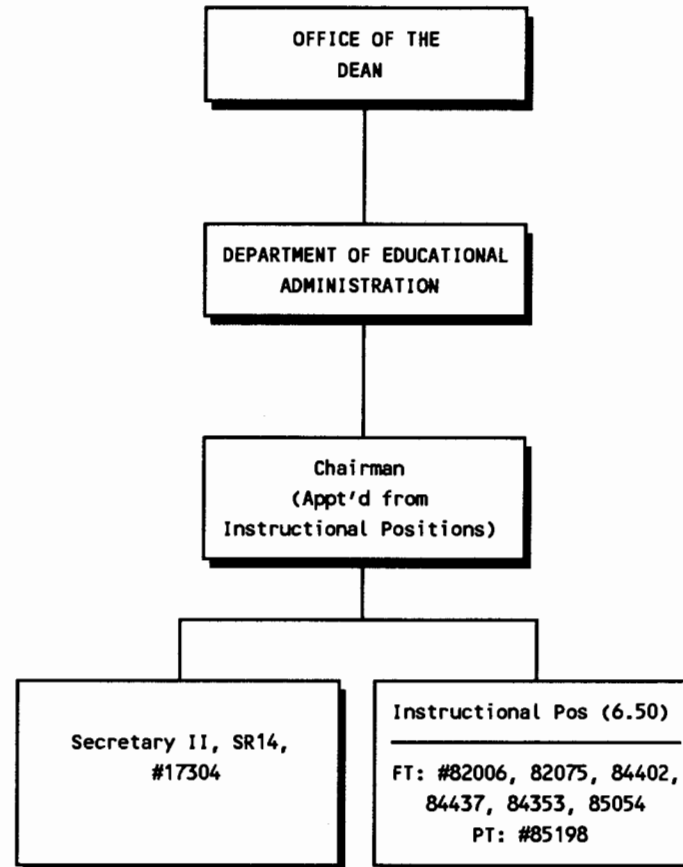
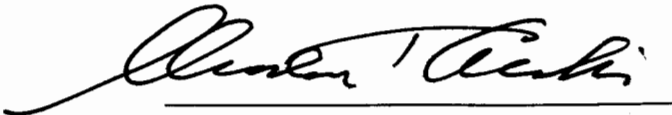


CHART UPDATED
DATE JUN 30 1993


DEAN, COLLEGE OF EDUCATION

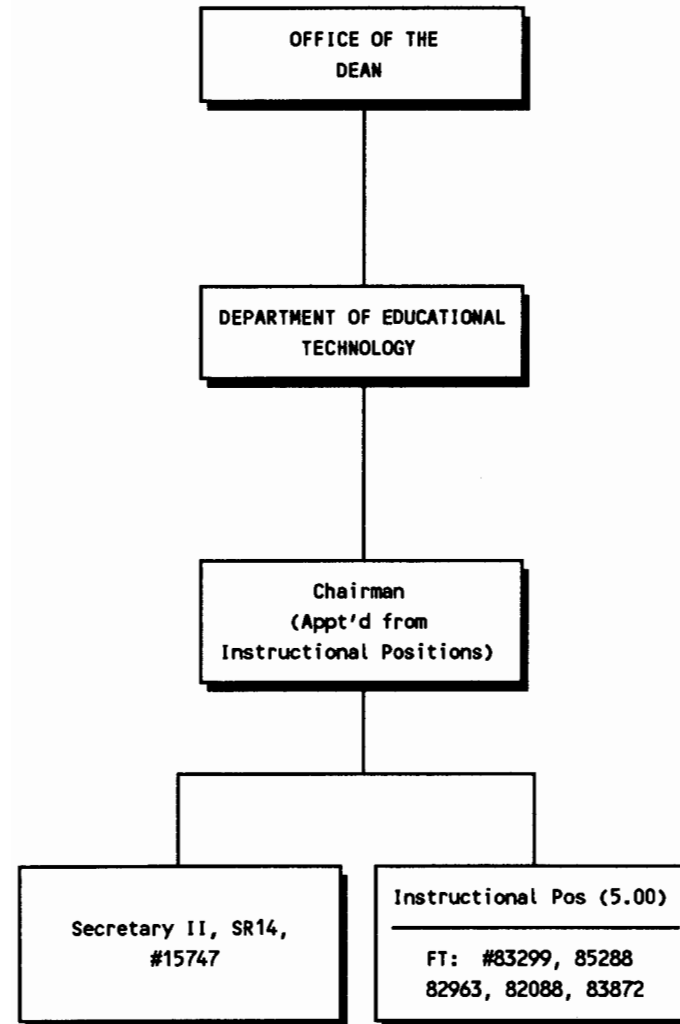
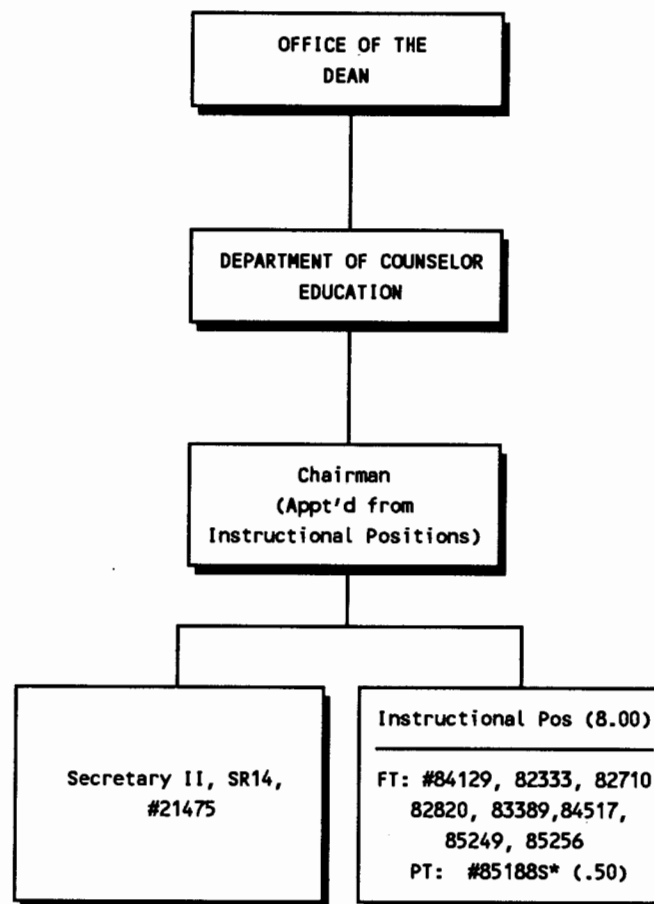


CHART UPDATED
DATE JUN 30 1993



*Temp Grad Asst Position

CHART UPDATED
DATE JUN 30 1983

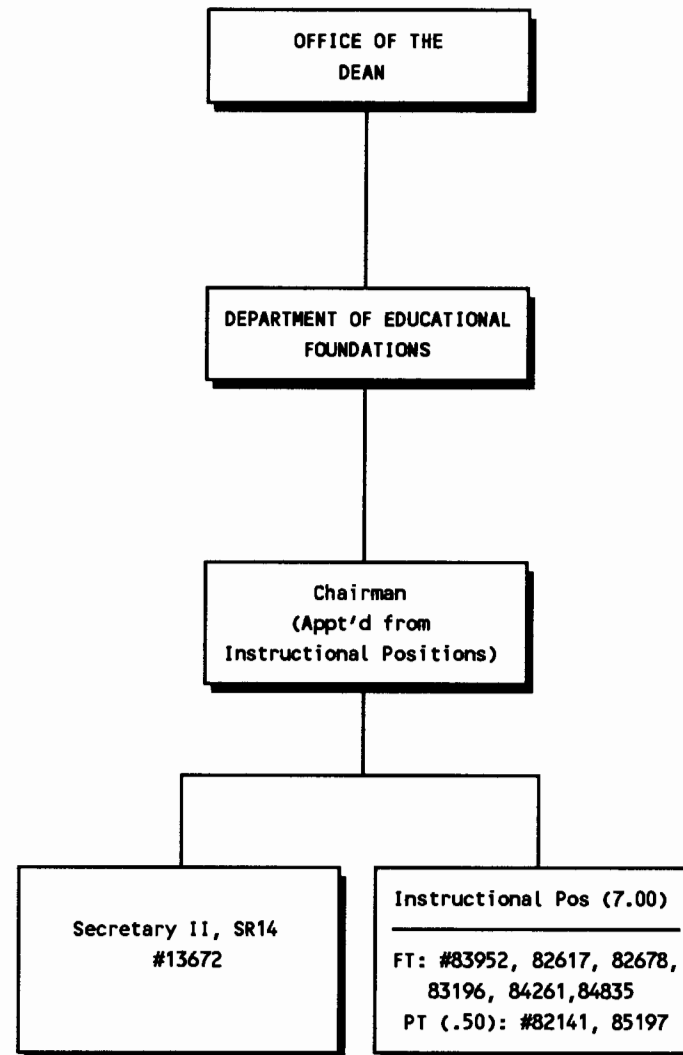


CHART UPDATED
DATE JUN 30 1983

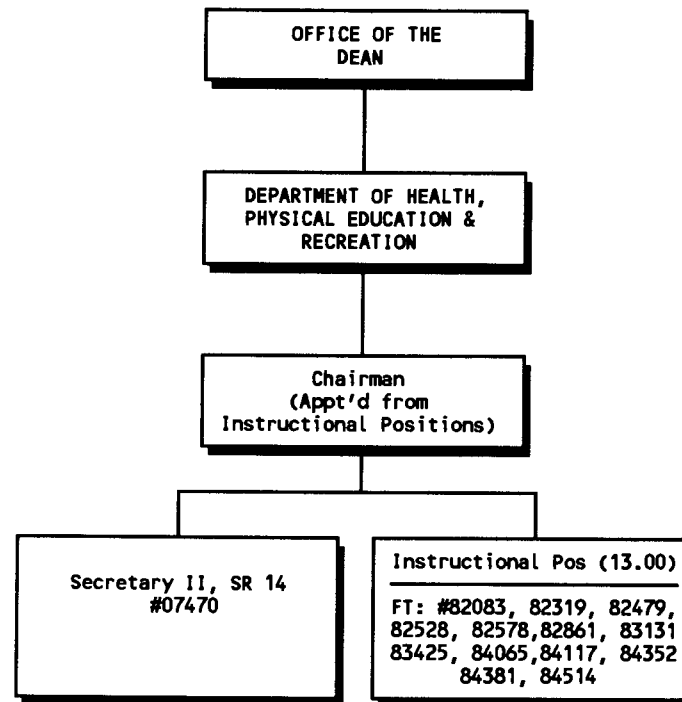


CHART UPDATED
DATE JUN 30 1993

STATE OF HAWAII/UNIVERSITY OF HAWAII
UNIVERSITY OF HAWAII AT MANOA
COLLEGE OF EDUCATION
POSITION ORGANIZATION CHART - CHART IX

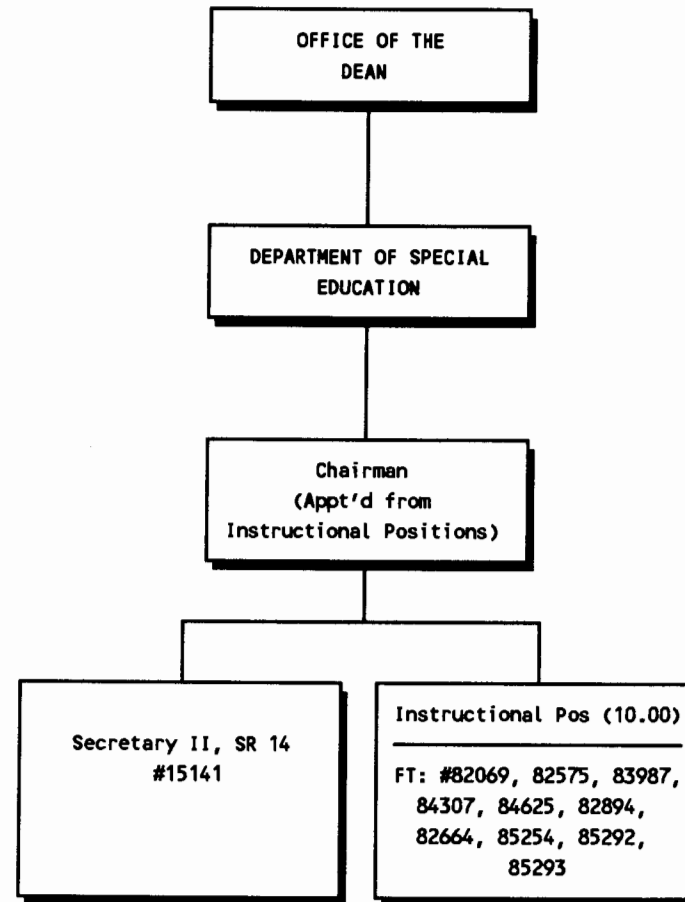


CHART UPDATED
DATE JUN 30 1993

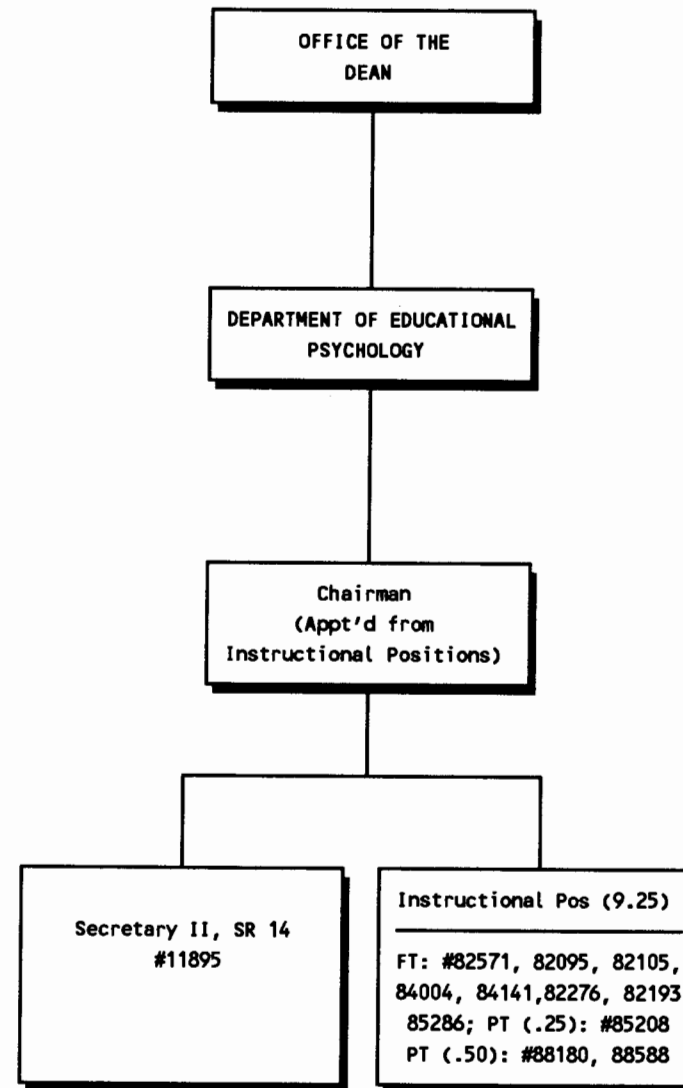


CHART UPDATED

DATE JUN 30 1993

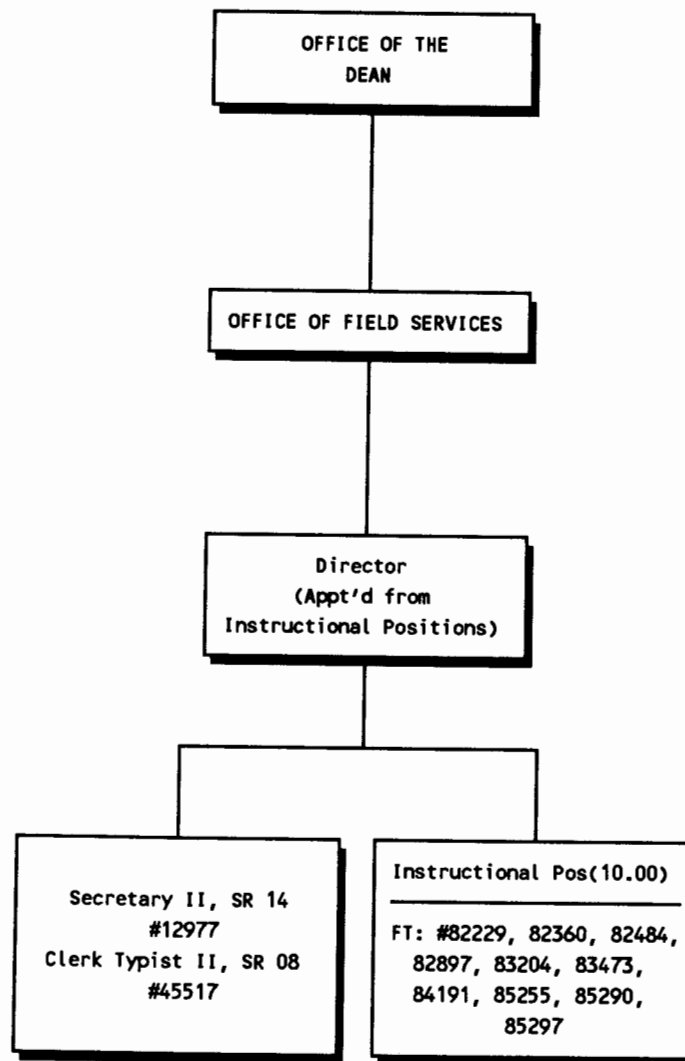
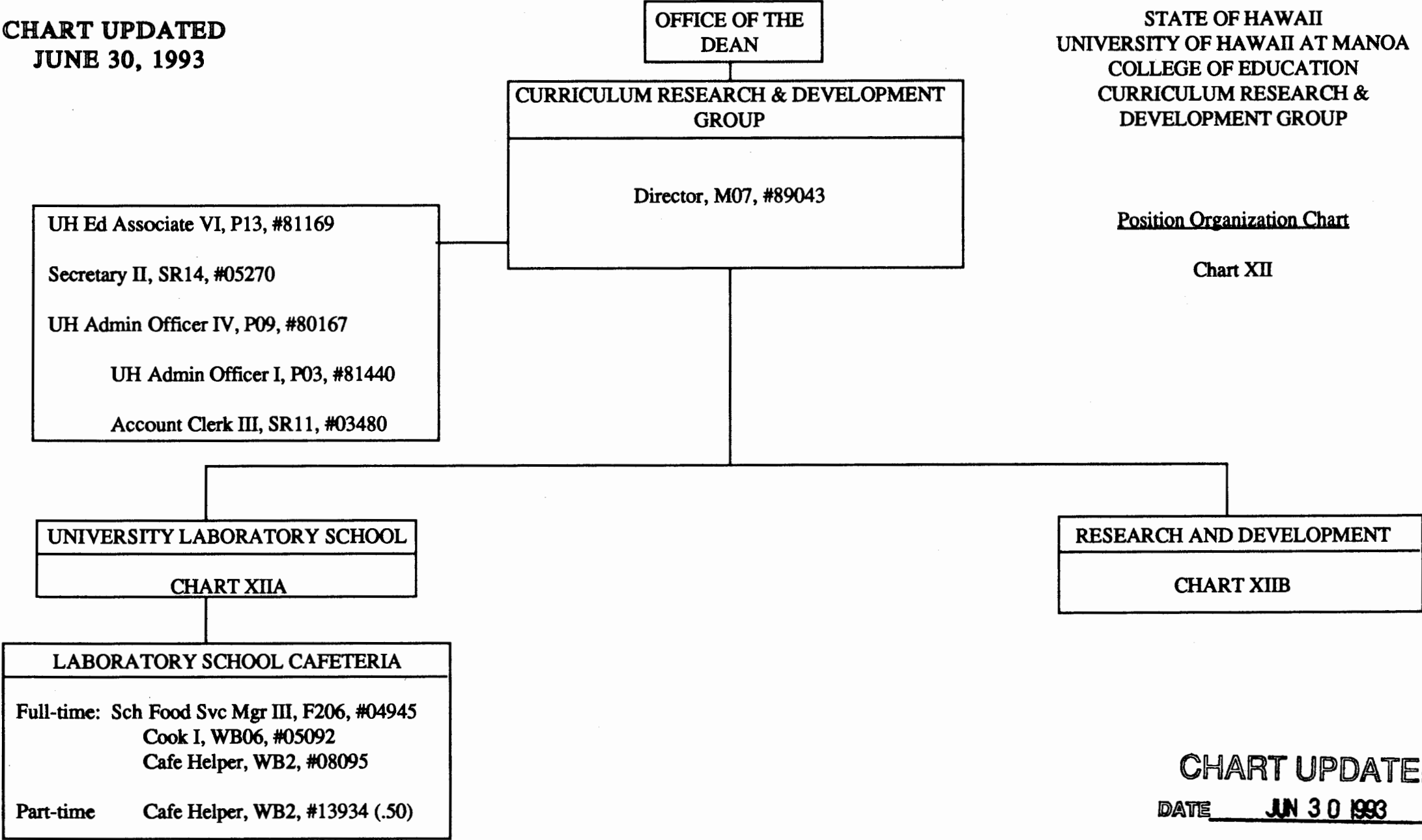


CHART UPDATED
DATE JUN 30 1993


DEAN, COLLEGE OF EDUCATION

CHART UPDATED
JUNE 30, 1993

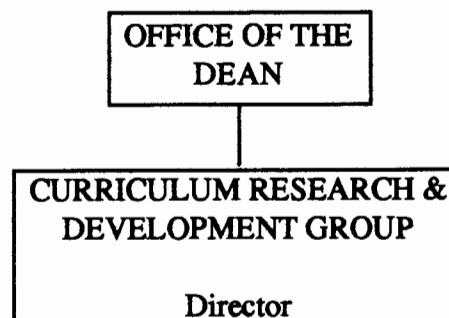


STATE OF HAWAII
UNIVERSITY OF HAWAII AT MANOA
COLLEGE OF EDUCATION
CURRICULUM RESEARCH &
DEVELOPMENT GROUP

Position Organization Chart

Chart XII

CHART UPDATED
DATE JUN 30 1993



STATE OF HAWAII
UNIVERSITY OF HAWAII AT MANOA
COLLEGE OF EDUCATION
CURRICULUM RESEARCH &
DEVELOPMENT GROUP

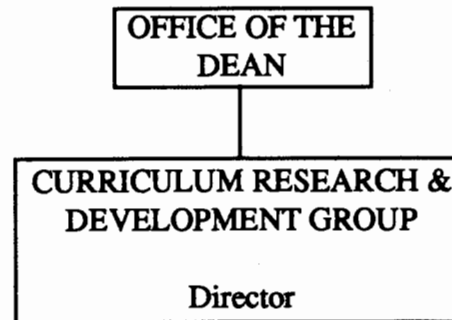
Position Organization Chart

CHART XIIA

UNIVERSITY LABORATORY SCHOOL
<p>Admintr-Univ Lab Sch, M05, #89257 (.90)</p> <p>Secretary II, SR14, #00783 (1.00) Clerk-Typist II, SR08, #36690 (1.00)</p> <p>Instructional Positions (1.00)</p> <p>Part-time: #82154 (.20), #83227 (.05), #84608 (.10), #82160 (.15), #82793 (.20), #84377 (.30)</p> <p>Administrative, Professional, Technical Positions (15.45)</p> <p>Full-time: UH Ed Assoc V, P11, #80480 UH Ed Assoc IV, P09, #81170 UH Ed Assoc II, P05, #80476</p> <p>Part-time: UH Ed Assoc VI, P13, #80435 (.15), #80470 (.20) UH Ed Assoc V, P11, #80418 (.40), #80466 (.20), #80468 (.15), #80474 (.40), #80917 (.15) UH Ed Assoc IV, P09, #80433 (.85), #80434 (.95), #80484 (.90), #80472 (.50), #80482 (.40), #80491 (.35), #77012 (.80) UH Ed Assoc III, P07, #80465 (.60), #80483 (.30) UH Ed Assoc II, P05, #80849 (.80), #80481 (.90), #80494 (.95), #80485 (.90), #80993 (.80) UH Ed Assoc I, P03, #80464 (.80)</p>

CHART UPDATED

DATE JUN 30 1993



STATE OF HAWAII
UNIVERSITY OF HAWAII AT MANOA
COLLEGE OF EDUCATION
CURRICULUM RESEARCH &
DEVELOPMENT GROUP

Position Organization Chart

CHART XIIB

RESEARCH AND DEVELOPMENT	
Instructional Positions (11.50)	
Full-time:	#84031, #83951, #82272, #82387, #84077, #82950
Part-time:	#82141M (.50), #82154 (.80), #83227 (.95), #84608 (.90), #82793 (.80), #84377 (.70), #82160 (.85)
Admintr-Univ Lab Sch, M05, #89257 (.10)	
Administrative, Professional, Technical Positions (15.55)	
Full-time:	UH Ed Assoc VI, P13, #80486, #80495, #80443 UH Ed Assoc V, P11, #80440 UH Ed Assoc IV, P09, #80228, #80420
Part-time:	UH Ed Assoc IV, P13, #80470 (.80), #80435 (.85) UH Ed Assoc V, P11, #80418 (.60), #80468 (.85), #80466 (.80), #80474 (.60), #80917 (.85) UH Ed Assoc IV, P09, #80484 (.10), #80491 (.65), #80472 (.50), #80433 (.15), #80434 (.05), #80482 (.60), #77012 (.20) UH Ed Assoc III, P07, #80465 (.40), #80483 (.70) UH Ed Assoc II, P05, #80849 (.20), #80481 (.10), #80485 (.10), #80993 (.20), #80494 (.05) UH Ed Assoc I, P03, #80464 (.20)
Clerk-Typist III, SR10, #35206 (1.00)	

CHART UPDATED

DATE JUN 30 1993