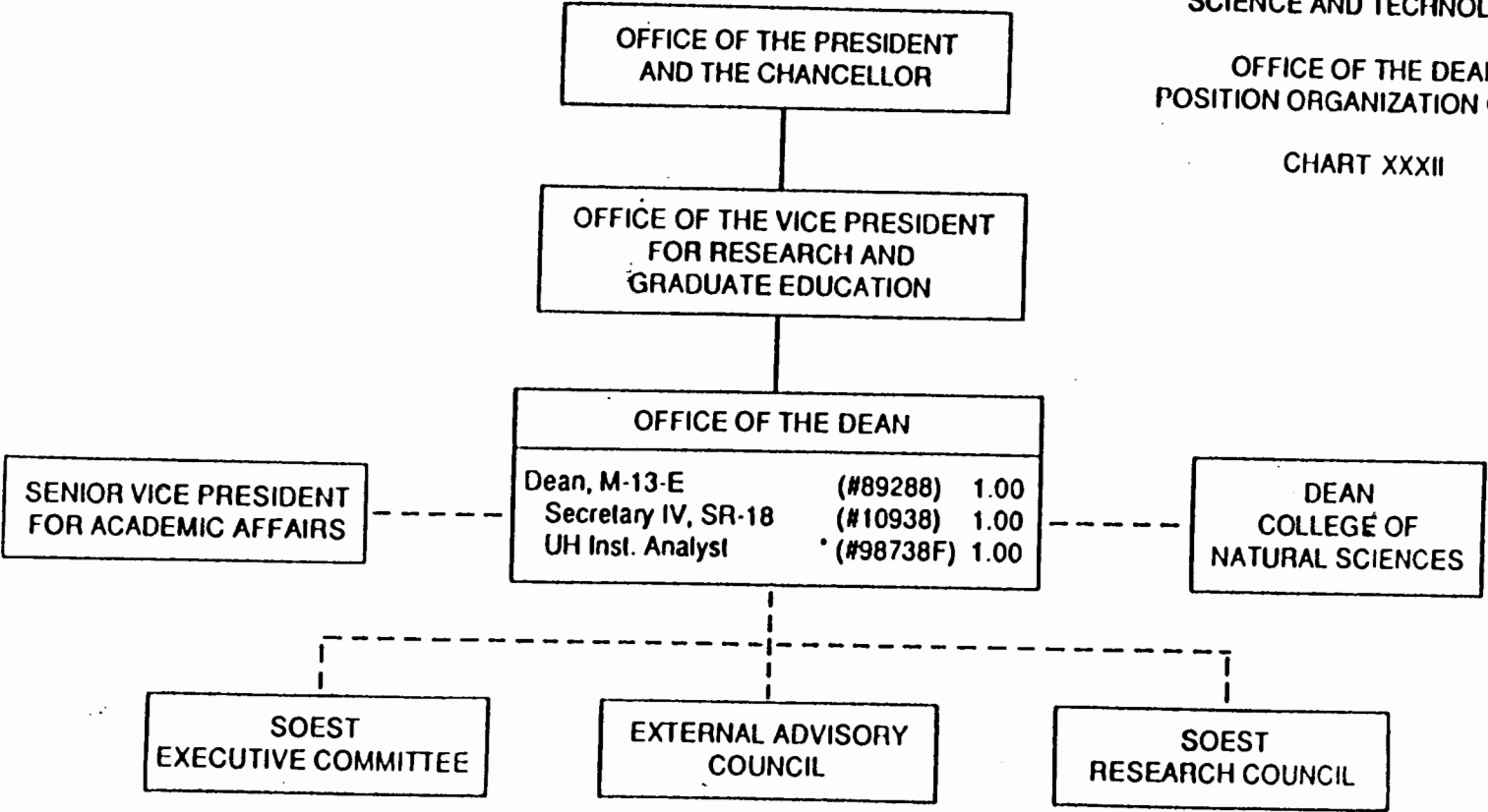


CHART UPDATED  
DATE **JUN 30 1988**

STATE OF HAWAII  
UNIVERSITY OF HAWAII  
UNIVERSITY OF HAWAI AT MANOA  
SCHOOL OF OCEAN AND EARTH  
SCIENCE AND TECHNOLOGY

OFFICE OF THE DEAN  
POSITION ORGANIZATION CHART

CHART XXXII



• To be established/reclassified to the position of Assistant to the Dean

CHART UPDATED

DATE JUN 30 1993

STATE OF HAWAII  
UNIVERSITY OF HAWAII  
UNIVERSITY OF HAWAII AT MANOA  
SCHOOL OF OCEAN AND EARTH  
SCIENCE AND TECHNOLOGY

OFFICE OF THE ASSOCIATE DEAN  
FOR ACADEMIC AFFAIRS  
POSITION ORGANIZATION CHART

CHART XXXIII

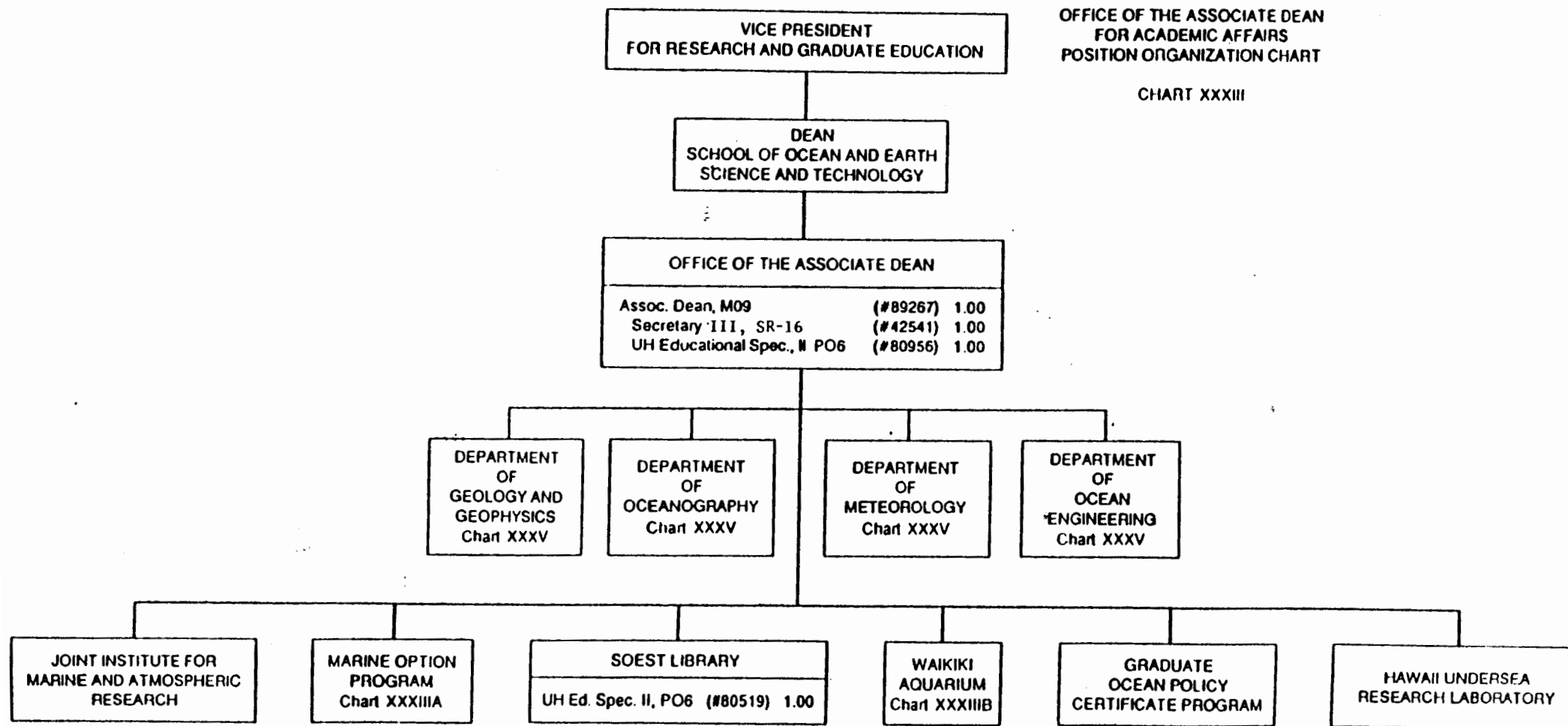
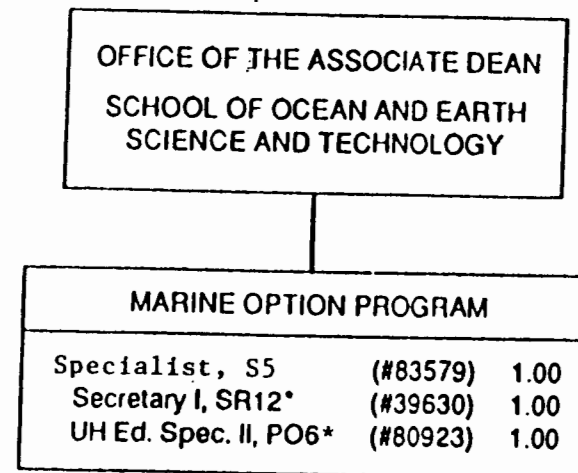


CHART UPDATED  
DATE JAN 30 1993

STATE OF HAWAII  
UNIVERSITY OF HAWAII  
UNIVERSITY OF HAWAII AT MANOA  
SCHOOL OF OCEAN AND EARTH  
SCIENCE AND TECHNOLOGY

MARINE OPTION PROGRAM  
POSITION ORGANIZATION CHART

CHART XXXIIIA



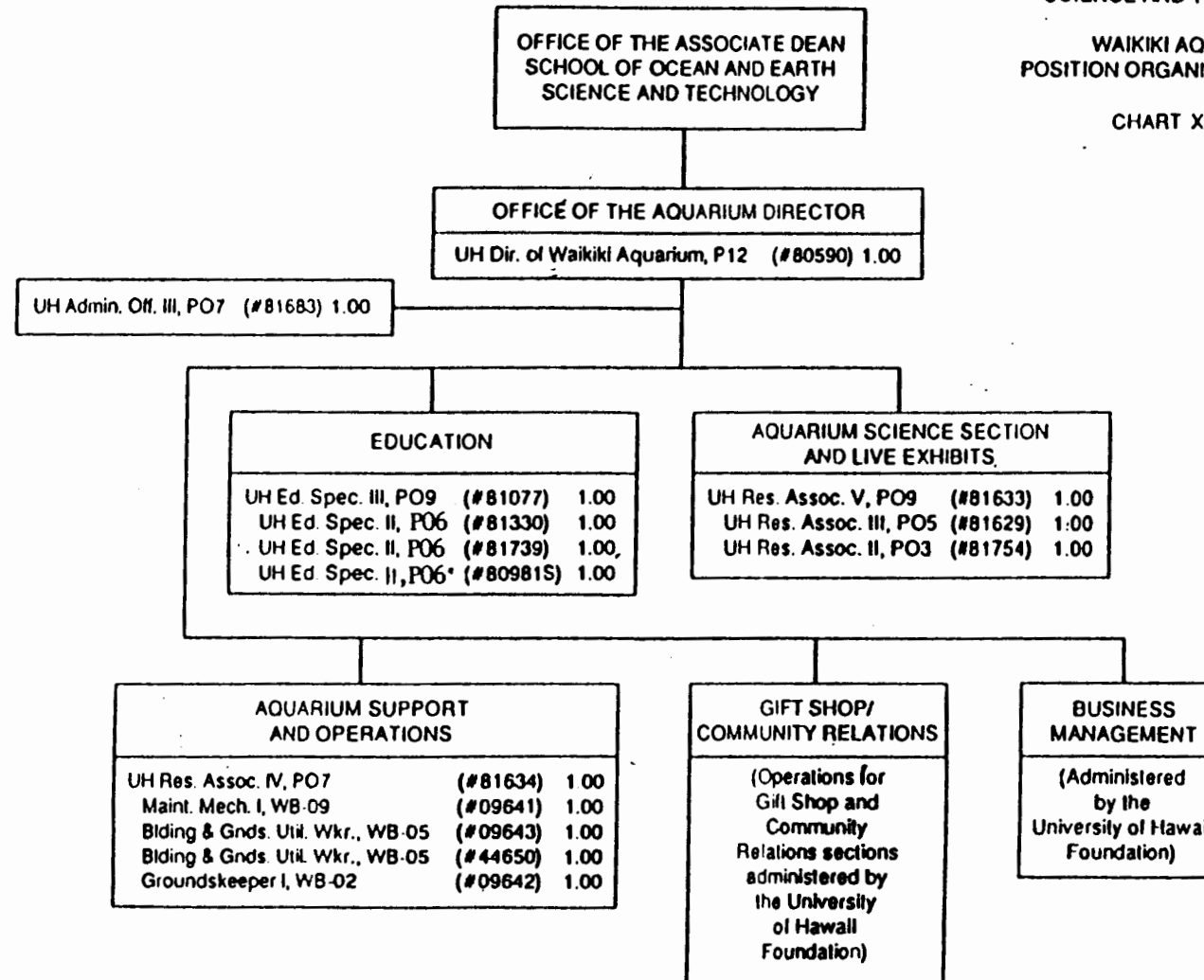
\* To be reclassified

CHART UPDATED  
DATE JUN 30 1993

STATE OF HAWAII  
UNIVERSITY OF HAWAII  
UNIVERSITY OF HAWAII AT MANOA  
SCHOOL OF OCEAN AND EARTH  
SCIENCE AND TECHNOLOGY

WAIKIKI AQUARIUM  
POSITION ORGANIZATION CHART

CHART XXXIIIB



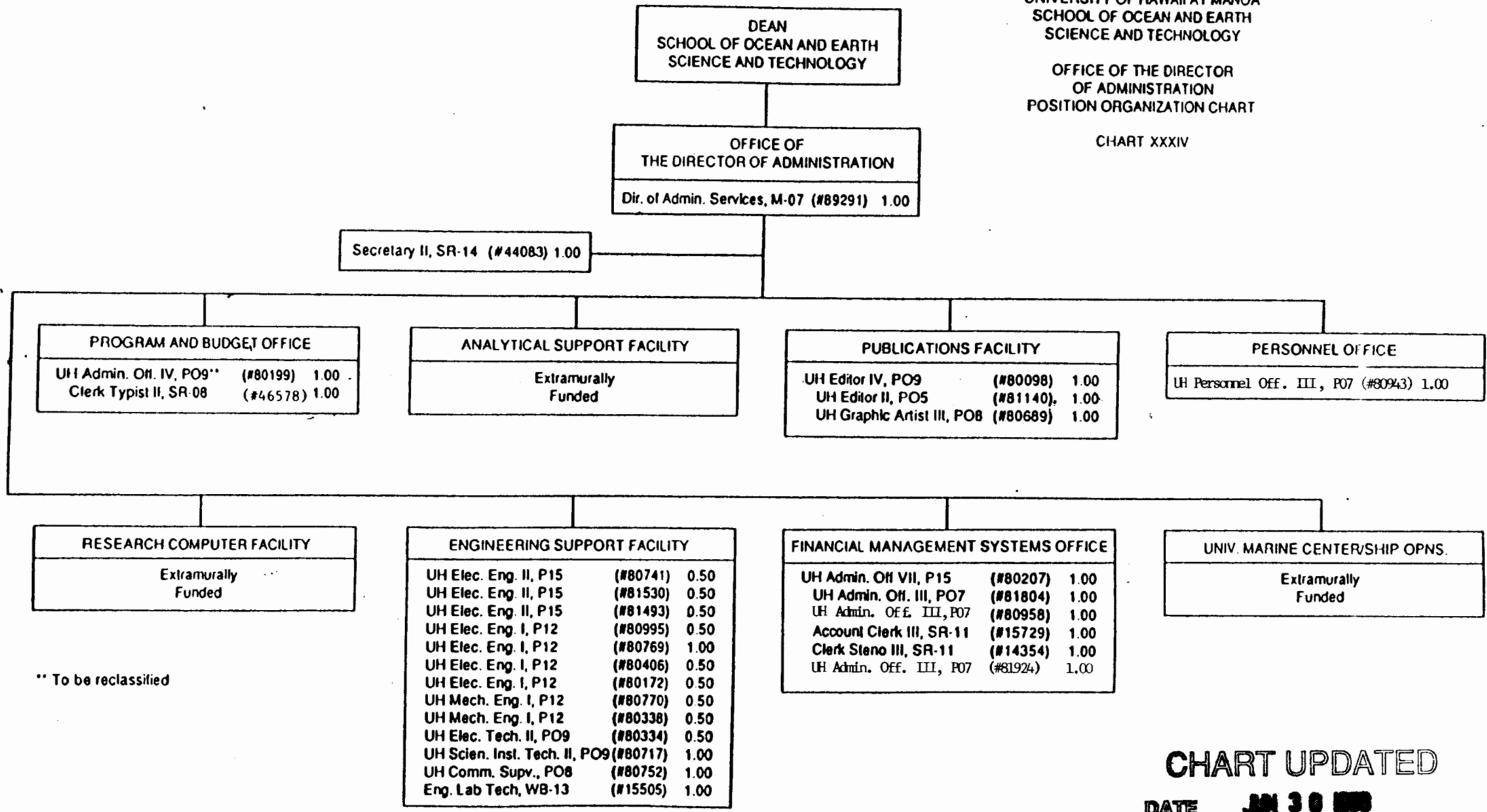
\* Temporary

CHART UPDATED  
DATE JUN 30 1983

STATE OF HAWAII  
UNIVERSITY OF HAWAII  
UNIVERSITY OF HAWAII AT MANOA  
SCHOOL OF OCEAN AND EARTH  
SCIENCE AND TECHNOLOGY

OFFICE OF THE DIRECTOR  
OF ADMINISTRATION  
POSITION ORGANIZATION CHART

CHART XXXIV

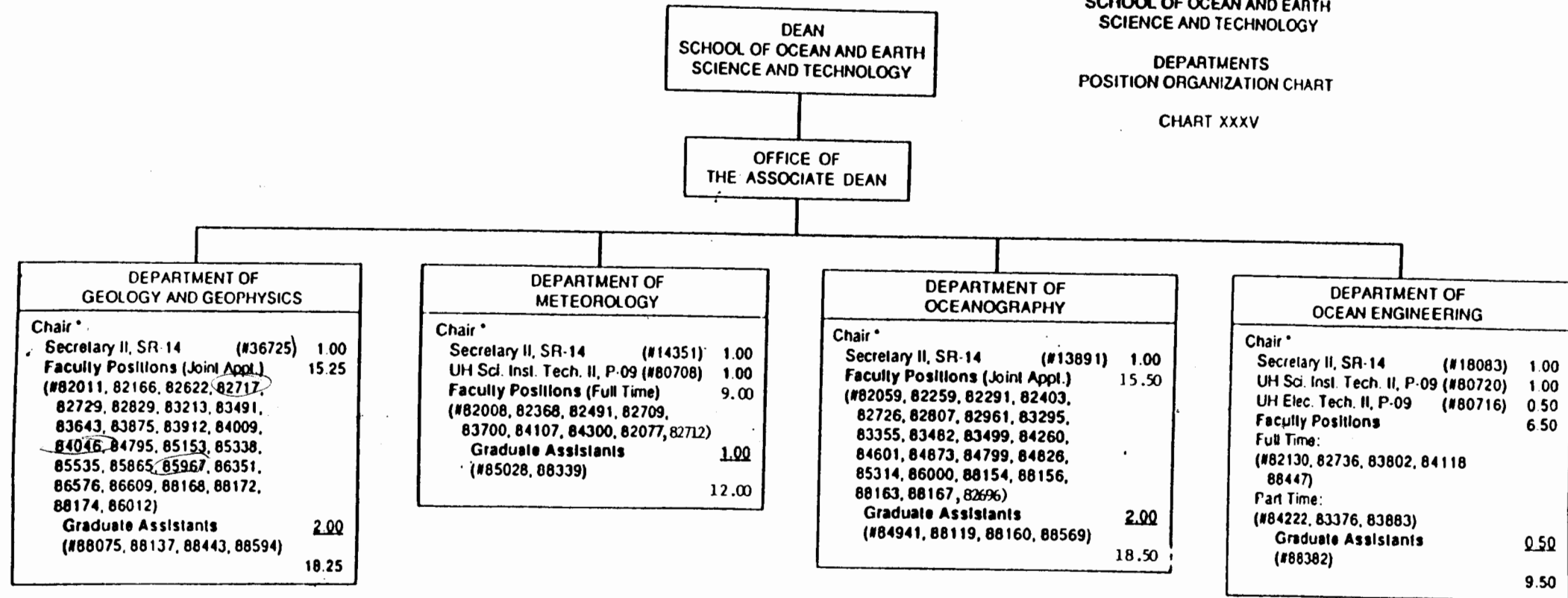


\*\* To be reclassified

STATE OF HAWAII  
UNIVERSITY OF HAWAII  
UNIVERSITY OF HAWAII AT MANOA  
SCHOOL OF OCEAN AND EARTH  
SCIENCE AND TECHNOLOGY

DEPARTMENTS  
POSITION ORGANIZATION CHART

CHART XXXV



\* Appointed from faculty positions

CHART UPDATED

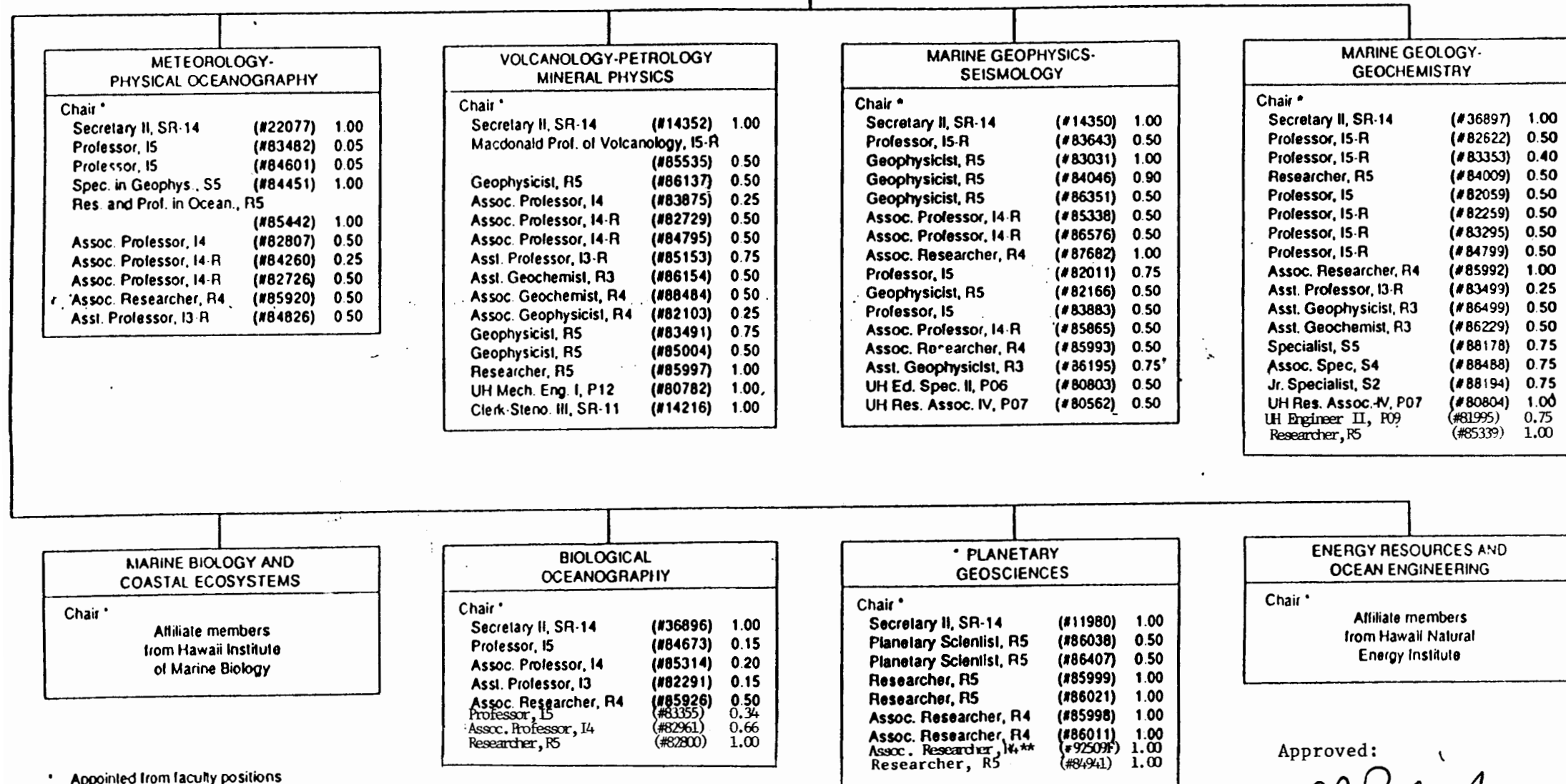
DATE JUN 30 1988

STATE OF HAWAII  
UNIVERSITY OF HAWAII  
UNIVERSITY OF HAWAII AT MANOA  
SCHOOL OF OCEAN AND EARTH  
SCIENCE AND TECHNOLOGY

RESEARCH DIVISIONS  
POSITION ORGANIZATION CHART

CHART XXXVI

DEAN  
SCHOOL OF OCEAN AND EARTH  
SCIENCE AND TECHNOLOGY



\* Appointed from faculty positions  
\*\* To be established

CHART UPDATED  
DATE **JAN 30 1983**

Approved:

*C. Barry Raleigh*

C. Barry Raleigh, Dean  
SOEST

06/30/93



STATE OF HAWAII  
UNIVERSITY OF HAWAII  
UNIVERSITY OF HAWAII AT MANOA  
SCHOOL OF OCEAN AND EARTH  
SCIENCE AND TECHNOLOGY

HAWAII INSTITUTE OF MARINE BIOLOGY  
ORGANIZATION CHART

CHART XXXVII

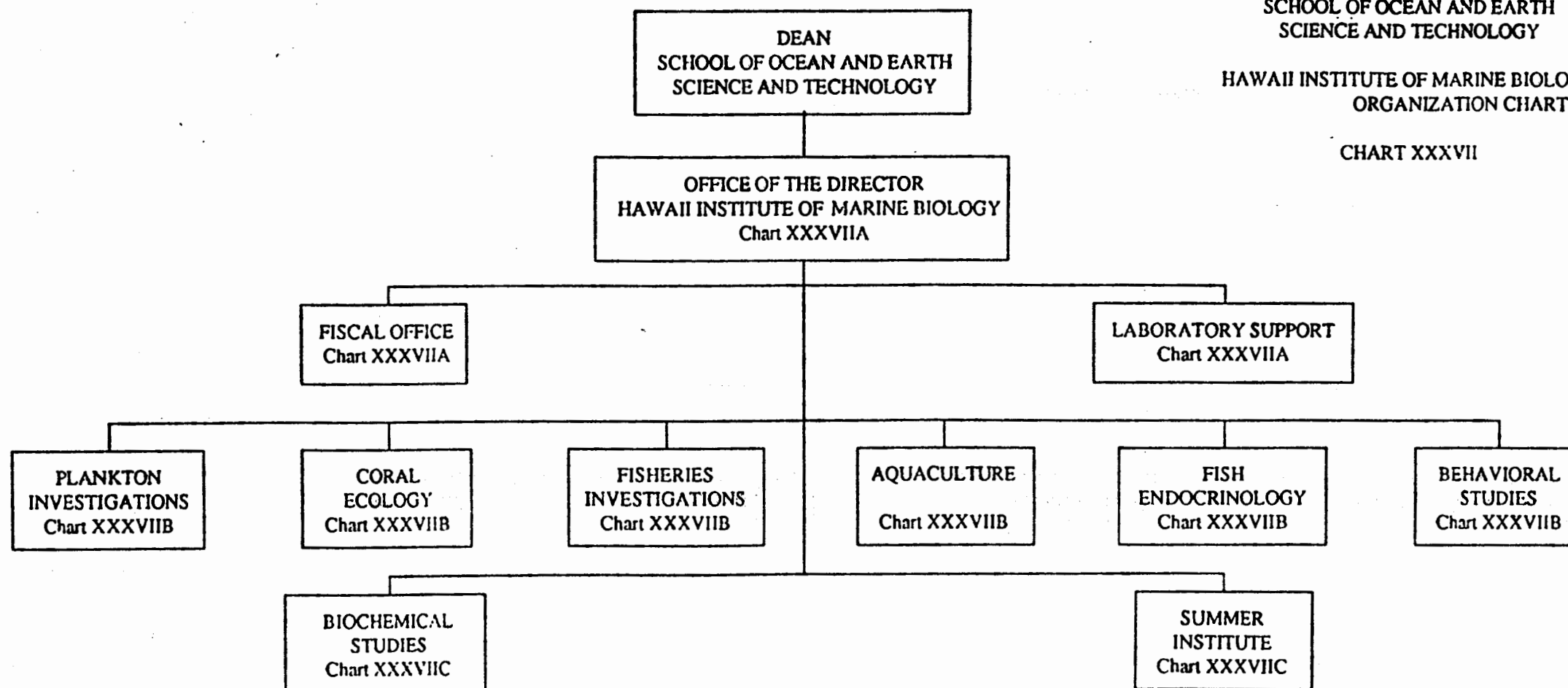


CHART UPDATED

DATE JAN 30 1983

STATE OF HAWAII  
UNIVERSITY OF HAWAII  
UNIVERSITY OF HAWAII AT MANOA  
SCHOOL OF OCEAN AND EARTH  
SCIENCE AND TECHNOLOGY

HAWAII INSTITUTE OF MARINE BIOLOGY  
POSITION ORGANIZATION CHART

CHART XXXVIIA

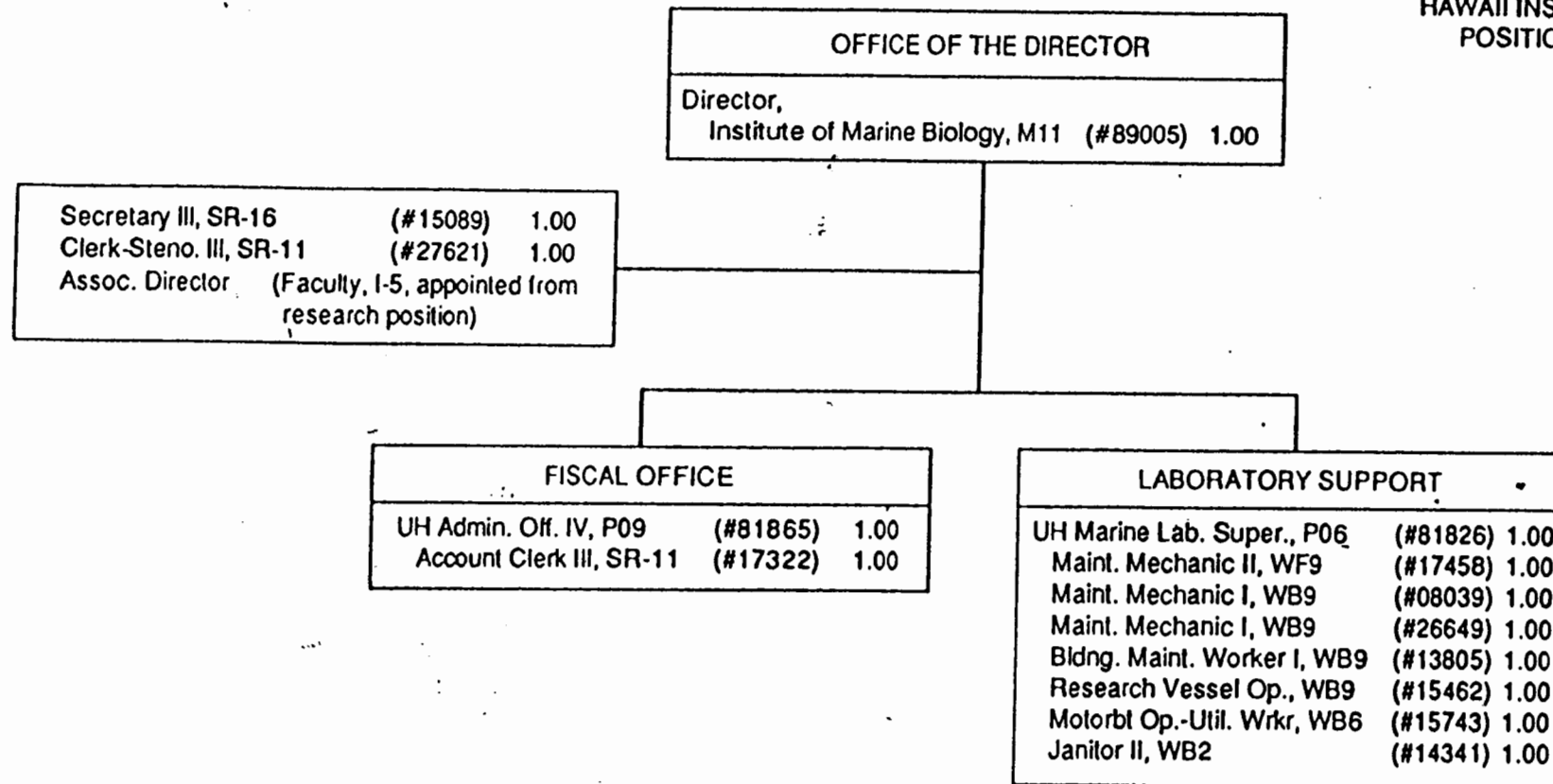


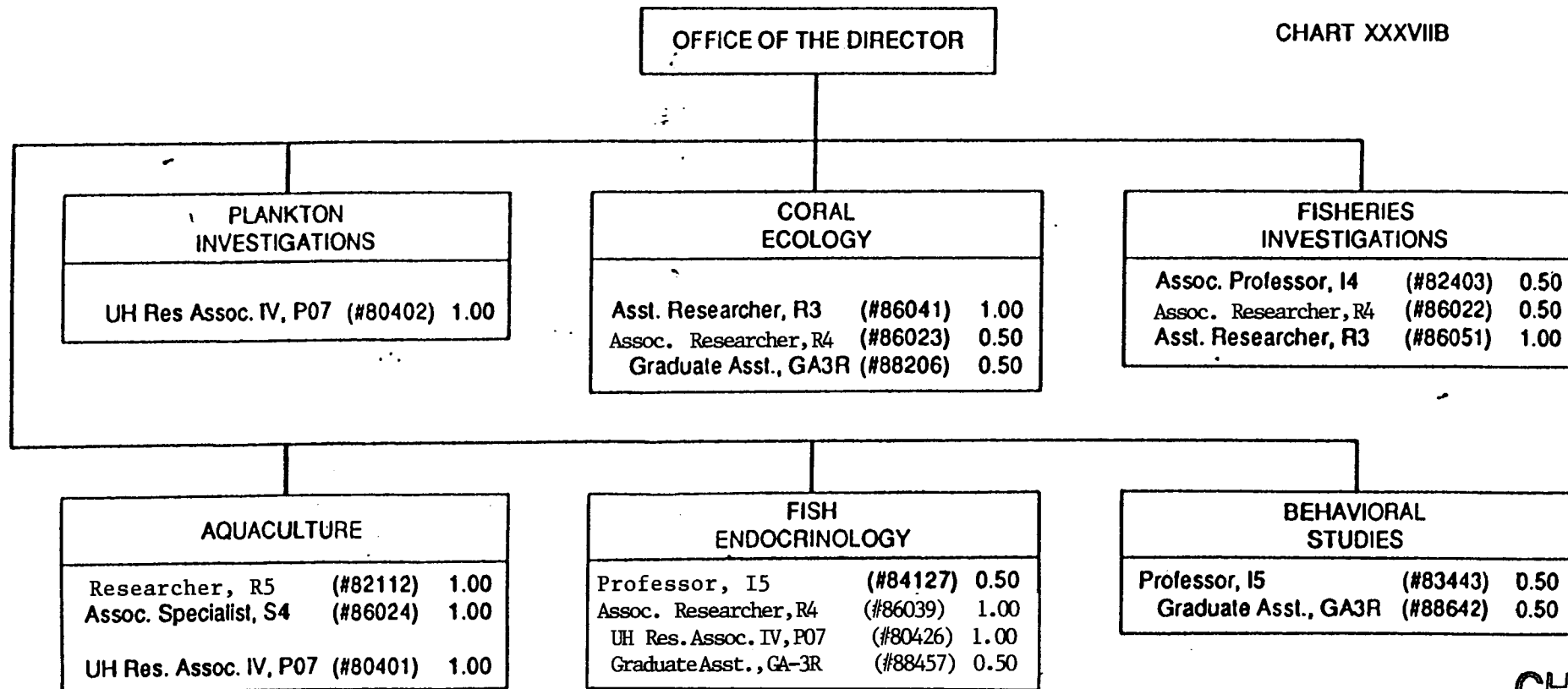
CHART UPDATED

DATE JUN 30 1983

STATE OF HAWAII  
UNIVERSITY OF HAWAII  
UNIVERSITY OF HAWAII AT MANOA  
SCHOOL OF OCEAN AND EARTH  
SCIENCE AND TECHNOLOGY

HAWAII INSTITUTE OF MARINE BIOLOGY  
POSITION ORGANIZATION CHART

CHART XXXVIIB



APPROVED:

*C. Barry Raleigh*

C. Barry Raleigh, Dean  
SOEST

CHART UPDATED

DATE JUN 30 1993

06/30/93

STATE OF HAWAII  
UNIVERSITY OF HAWAII  
UNIVERSITY OF HAWAII AT MANOA  
SCHOOL OF OCEAN AND EARTH  
SCIENCE AND TECHNOLOGY

HAWAII INSTITUTE OF MARINE BIOLOGY  
PROPOSED POSITION ORGANIZATION  
CHART

CHART XXXVIIC

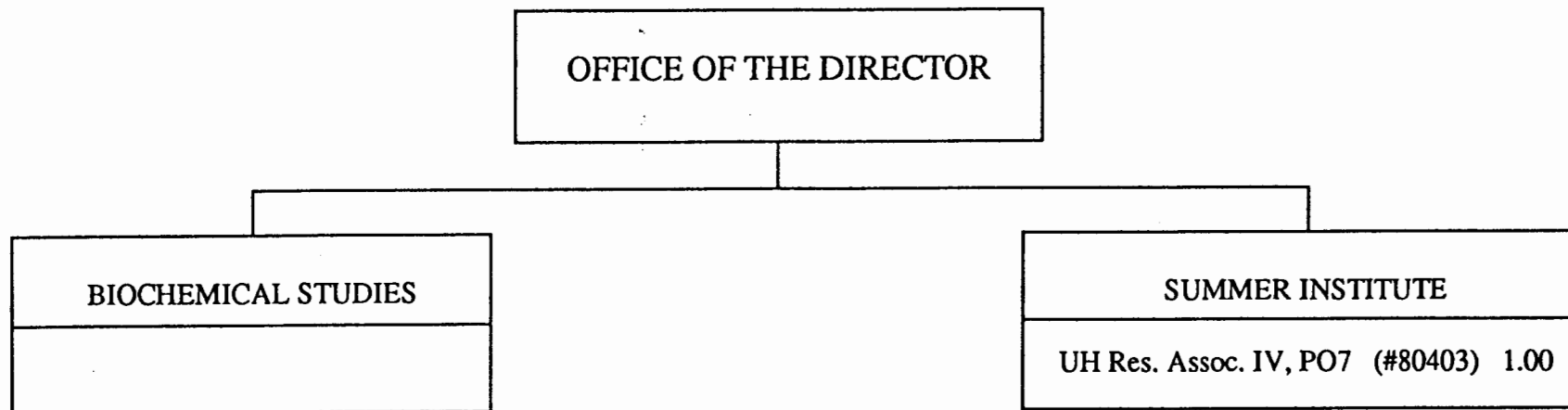



CHART UPDATED

APPROVED: DATE JUN 30 1993

  
C. Barry Raleigh, Dean  
SOEST  
06/30/93

STATE OF HAWAII  
UNIVERSITY OF HAWAII  
UNIVERSITY OF HAWAII AT MANOA  
SCHOOL OF OCEAN AND EARTH  
SCIENCE AND TECHNOLOGY

HAWAII INSTITUTE OF GEOPHYSICS  
POSITION ORGANIZATION CHART

CHART XXXVIII

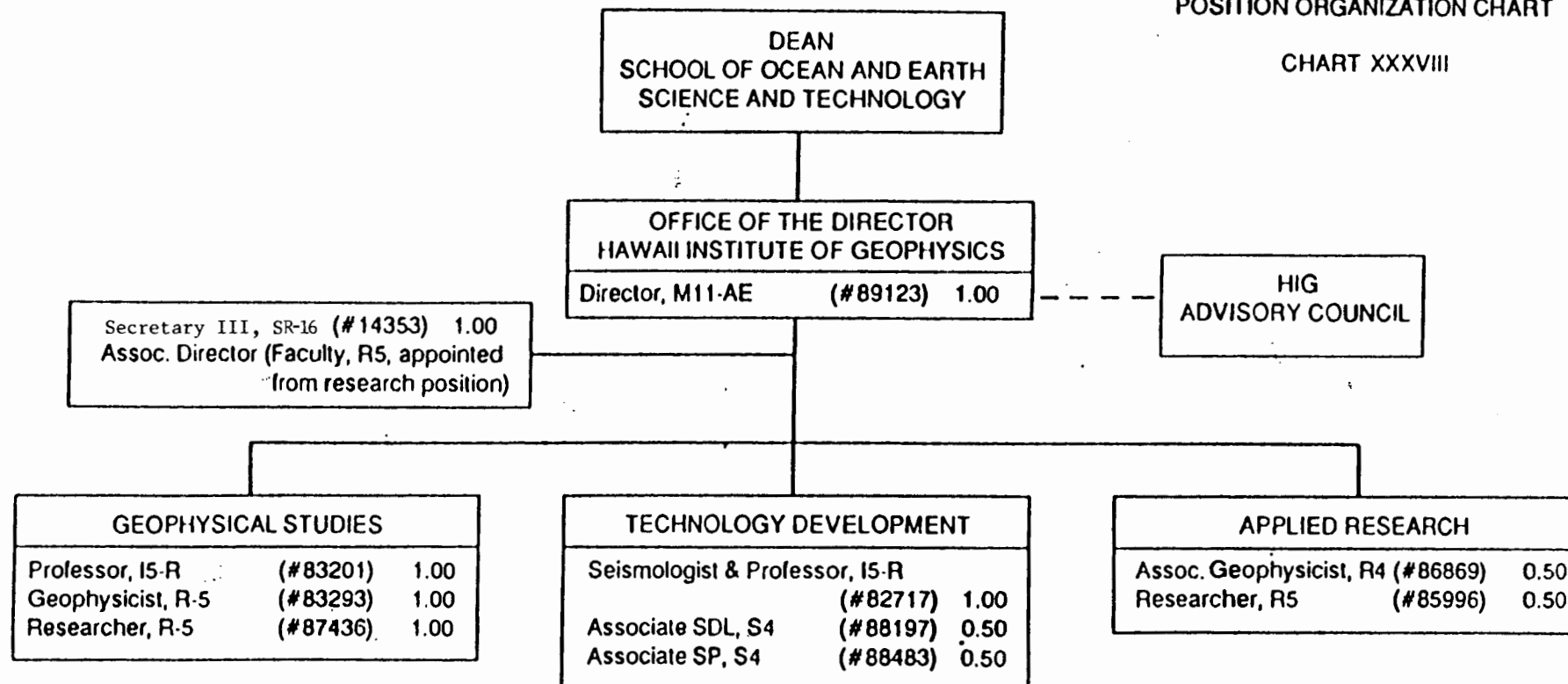


CHART UPDATED

DATE JAN 30 1988

STATE OF HAWAII  
UNIVERSITY OF HAWAII  
UNIVERSITY OF HAWAII AT MANOA  
SCHOOL OF OCEAN AND EARTH  
SCIENCE AND TECHNOLOGY

HAWAII NATURAL ENERGY INSTITUTE  
POSITION ORGANIZATION CHART

CHART XXXIX

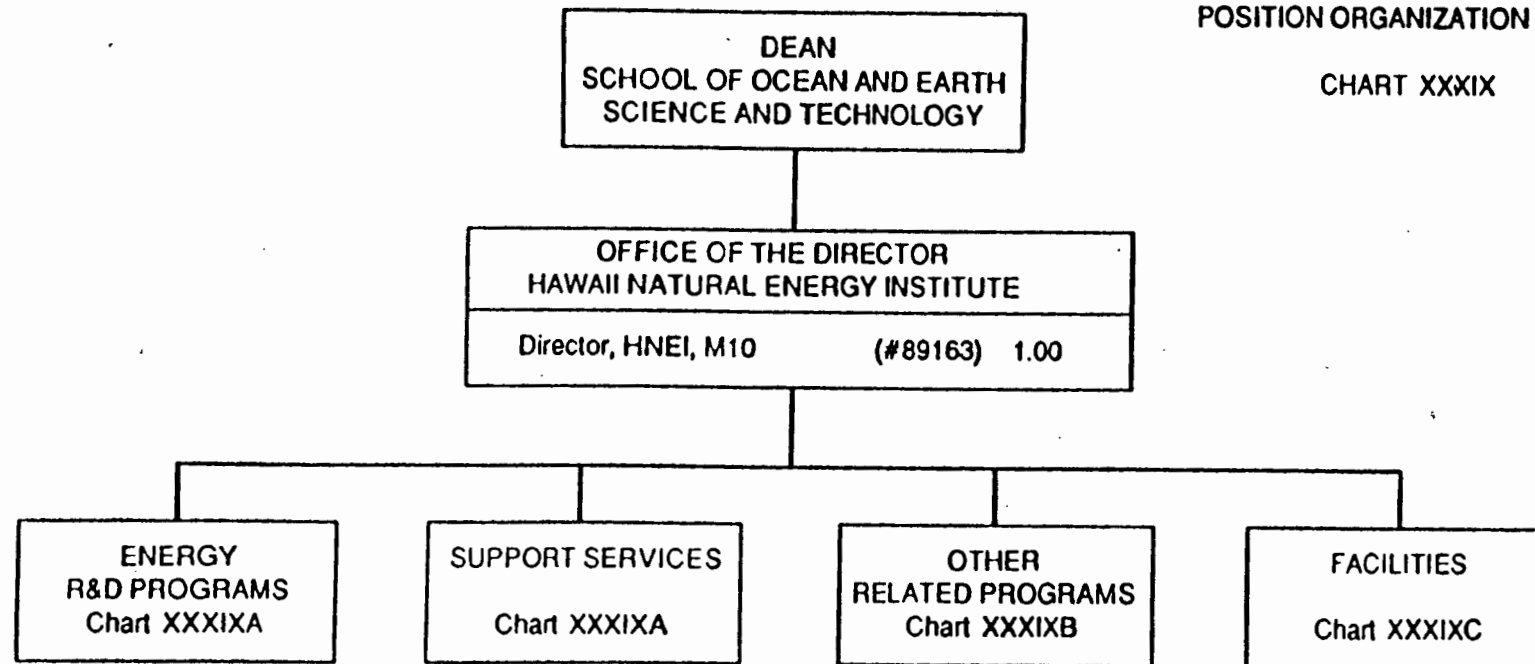


CHART UPDATED

DATE JUN 30 1983

STATE OF HAWAII  
UNIVERSITY OF HAWAII  
UNIVERSITY OF HAWAII AT MANOA  
SCHOOL OF OCEAN AND EARTH  
SCIENCE AND TECHNOLOGY

HAWAII NATURAL ENERGY INSTITUTE  
POSITION ORGANIZATION CHART

CHART XXXIXA

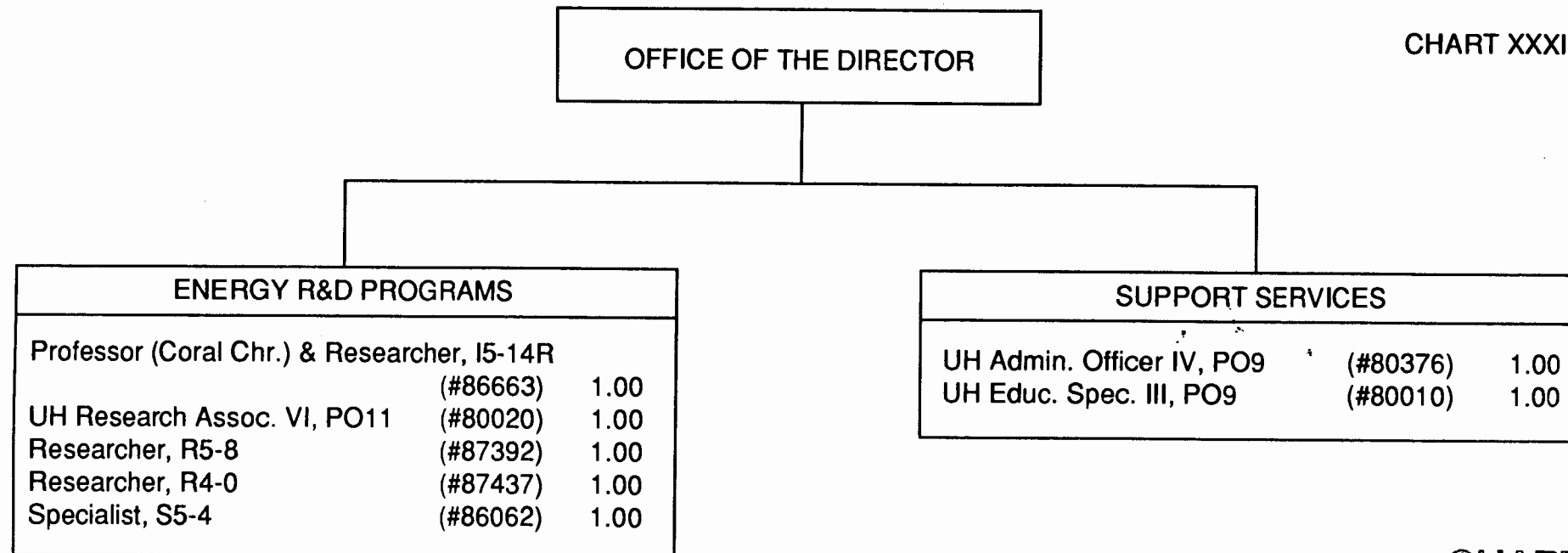
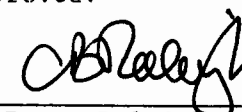


CHART UPDATED

DATE JUN 30 1993

Approved:



C. Barry Raleigh, Dean  
SOEST

06/30/93

STATE OF HAWAII  
UNIVERSITY OF HAWAII  
UNIVERSITY OF HAWAII AT MANOA  
SCHOOL OF OCEAN AND EARTH  
SCIENCE AND TECHNOLOGY

HAWAII NATURAL ENERGY INSTITUTE  
POSITION ORGANIZATION CHART

CHART XXXIXB

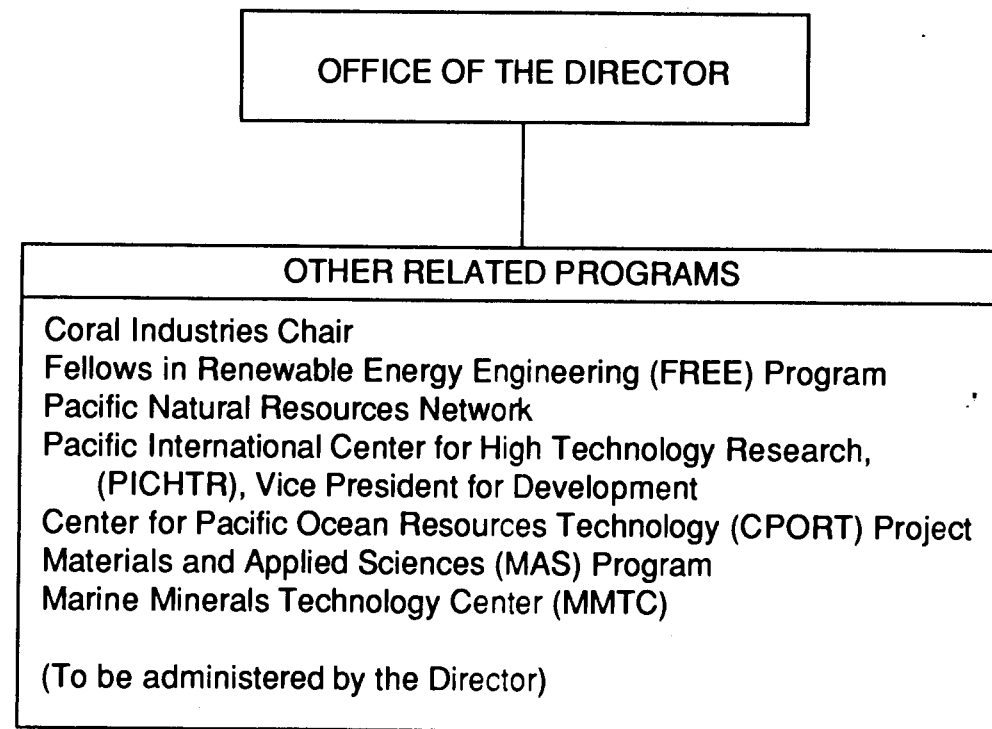


CHART UPDATED

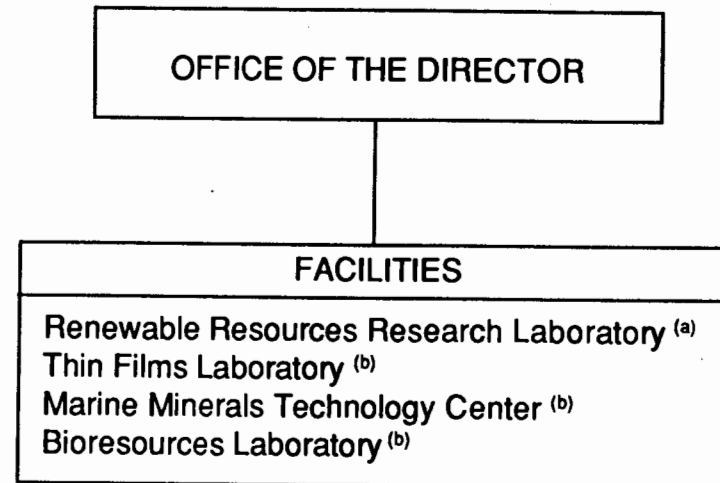
DATE JAN 30 1993



STATE OF HAWAII  
UNIVERSITY OF HAWAII  
UNIVERSITY OF HAWAII AT MANOA  
SCHOOL OF OCEAN AND EARTH  
SCIENCE AND TECHNOLOGY

HAWAII NATURAL ENERGY INSTITUTE  
POSITION ORGANIZATION CHART

CHART XXXIXC



- (a) administered by Coral Chair  
(b) administration and research supervisory role

CHART UPDATED  
DATE JUN 30 1993

Approved:

C. Barry Raleigh, Dean  
SOEST

06/30/93

STATE OF HAWAII  
UNIVERSITY OF HAWAII  
UNIVERSITY OF HAWAII AT MANOA  
SCHOOL OF OCEAN AND EARTH  
SCIENCE AND TECHNOLOGY

SEA GRANT COLLEGE PROGRAM  
ORGANIZATION CHART

CHART XL

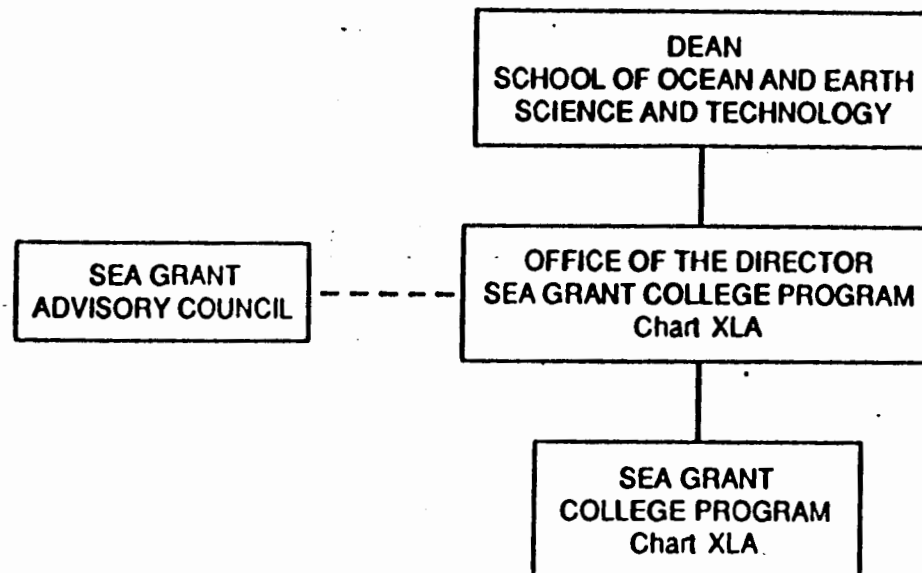


CHART UPDATED

DATE JUN 30 1980

STATE OF HAWAII  
UNIVERSITY OF HAWAII  
UNIVERSITY OF HAWAII AT MANOA  
SCHOOL OF OCEAN AND EARTH  
SCIENCE AND TECHNOLOGY

SEA GRANT COLLEGE PROGRAM  
POSITION ORGANIZATION CHART

CHART XLA

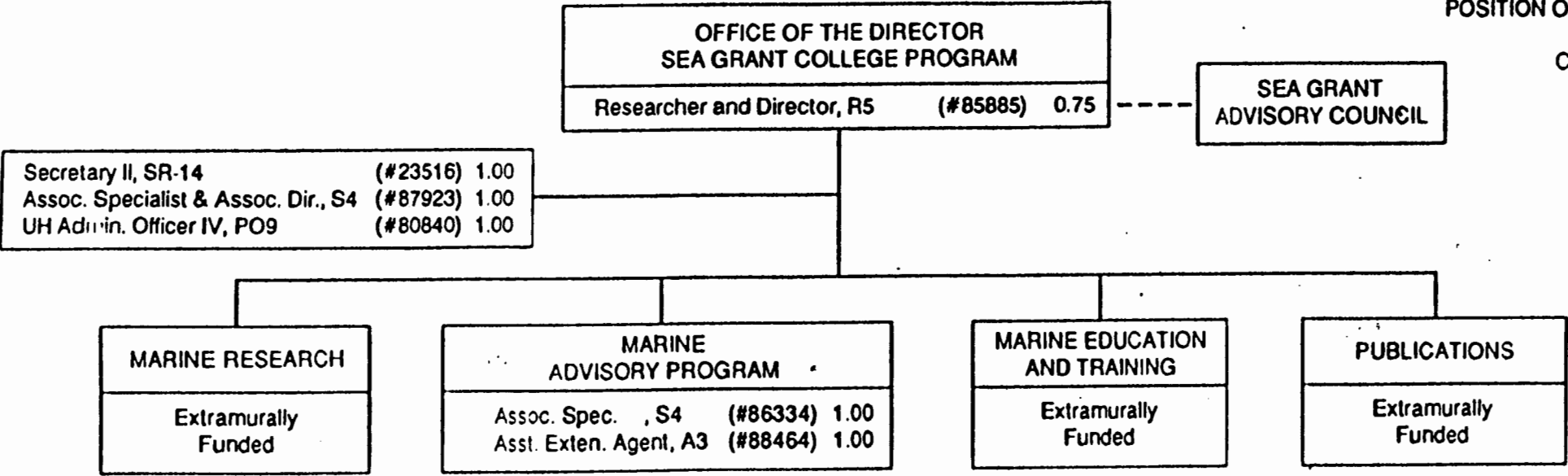


CHART UPDATED

DATE JUN 30 1988