

11/8/93 NAME CHANGE TO
Dept. of Biosystems Engineering

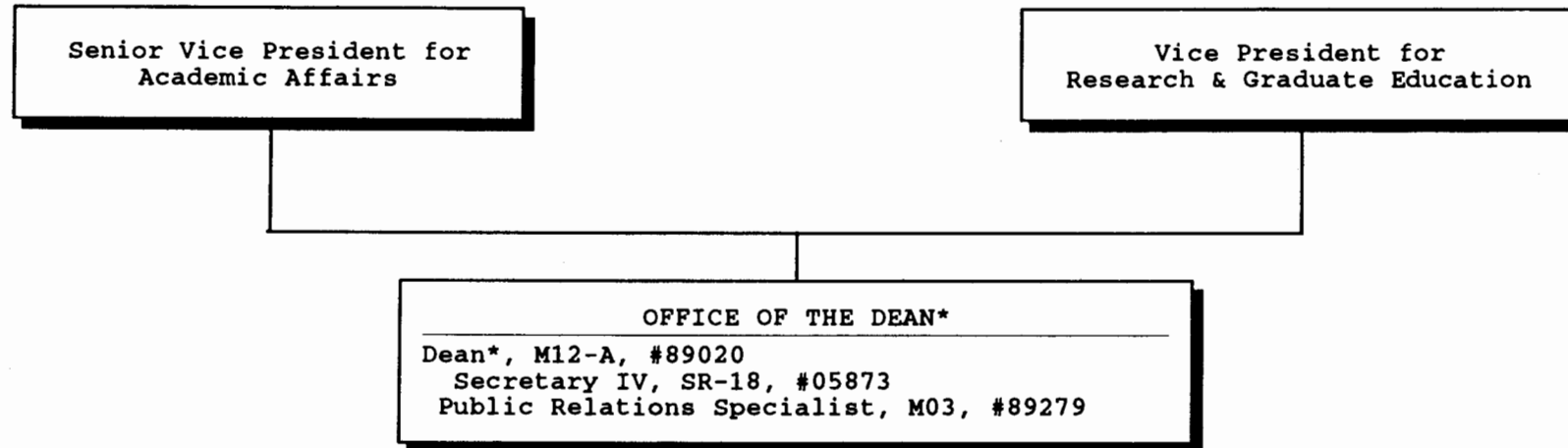
* & Director of Cooperative Science & Education

CHART UPDATED

DATE JUN 30 1993

STATE OF HAWAII
UNIVERSITY OF HAWAII
UNIVERSITY OF HAWAII AT MANOA
COLLEGE OF TROPICAL AGRICULTURE & HUMAN RESOURCES

OFFICE OF THE DEAN
CHART II

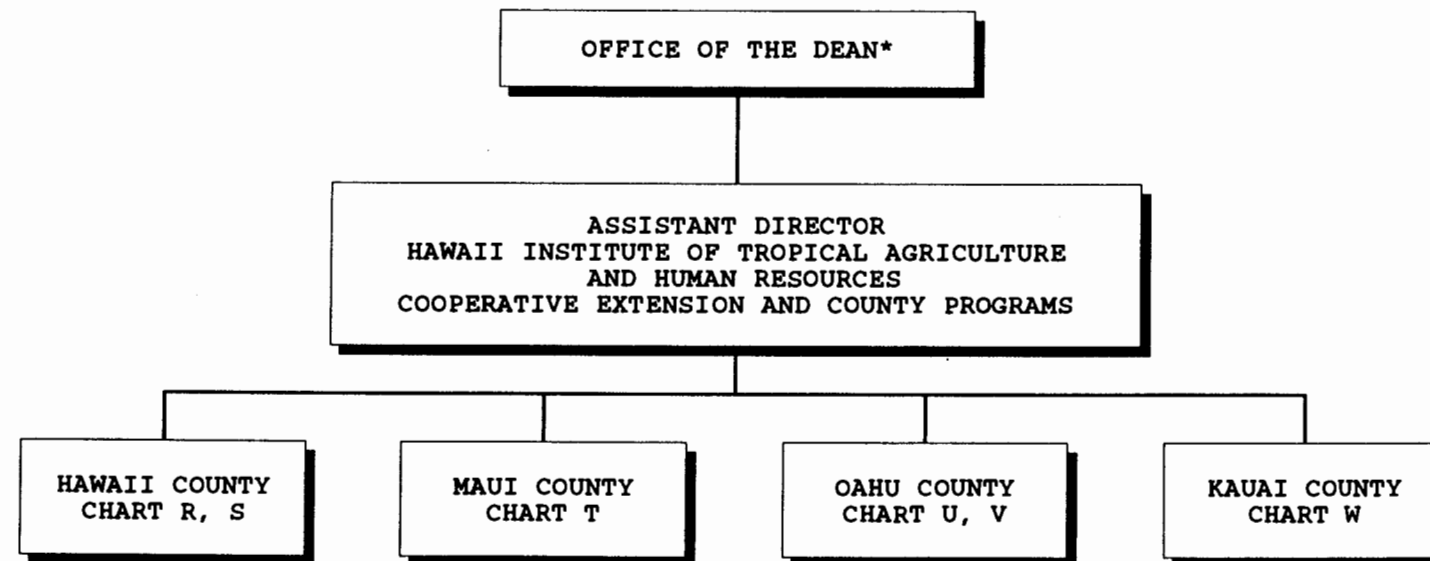


* & Director of Cooperative Science & Education

CHART UPDATED
DATE JUN 30 1993

STATE OF HAWAII
UNIVERSITY OF HAWAII
UNIVERSITY OF HAWAII AT MANOA
COLLEGE OF TROPICAL AGRICULTURE & HUMAN RESOURCES

HAWAII INSTITUTE OF TROPICAL AGRICULTURE & HUMAN RESOURCES
COUNTY ADMINISTRATION
CHART III

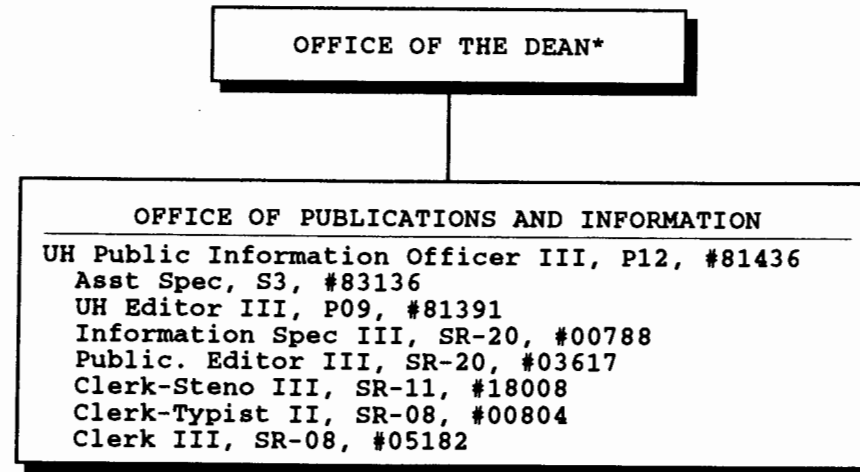


*& Director of Cooperative Science & Education

CHART UPDATED
DATE JUN 30 1993

STATE OF HAWAII
UNIVERSITY OF HAWAII
UNIVERSITY OF HAWAII AT MANOA
COLLEGE OF TROPICAL AGRICULTURE & HUMAN RESOURCES

OFFICE OF PUBLICATIONS AND INFORMATION
CHART IV

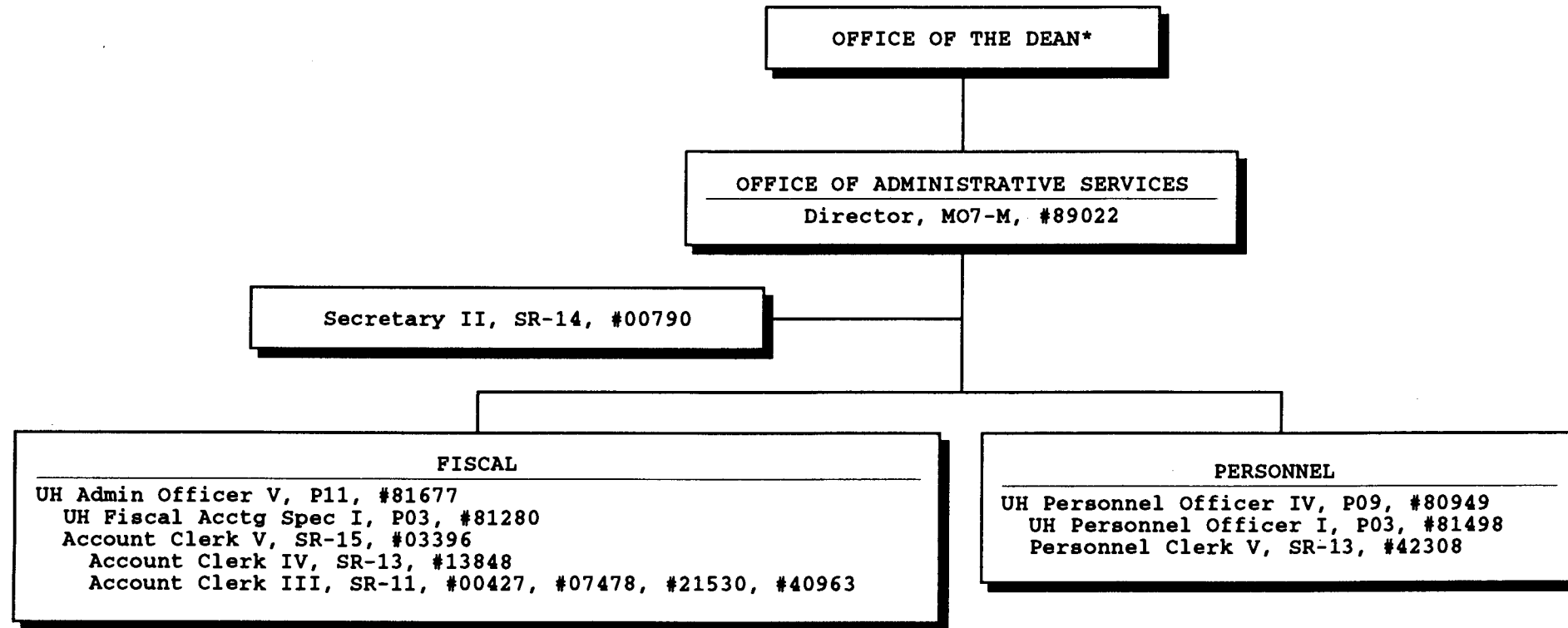


* & Director of Cooperative Science & Education

CHART UPDATED
DATE JUN 30 1993

STATE OF HAWAII
UNIVERSITY OF HAWAII
UNIVERSITY OF HAWAII AT MANOA
COLLEGE OF TROPICAL AGRICULTURE & HUMAN RESOURCES

OFFICE OF ADMINSTRATIVE SERVICES
CHART V

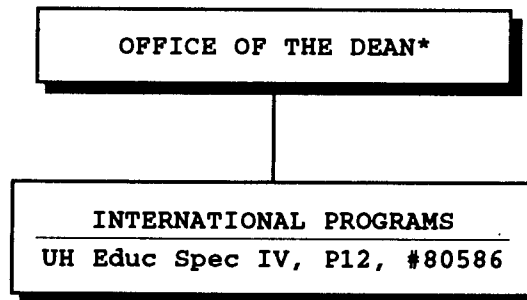


* & Director of Cooperative Science & Education

CHART UPDATED
JUN 30 1993
DATE _____

STATE OF HAWAII
UNIVERSITY OF HAWAII
UNIVERSITY OF HAWAII AT MANOA
COLLEGE OF TROPICAL AGRICULTURE & HUMAN RESOURCES

OFFICE OF INTERNATIONAL PROGRAMS
CHART VI

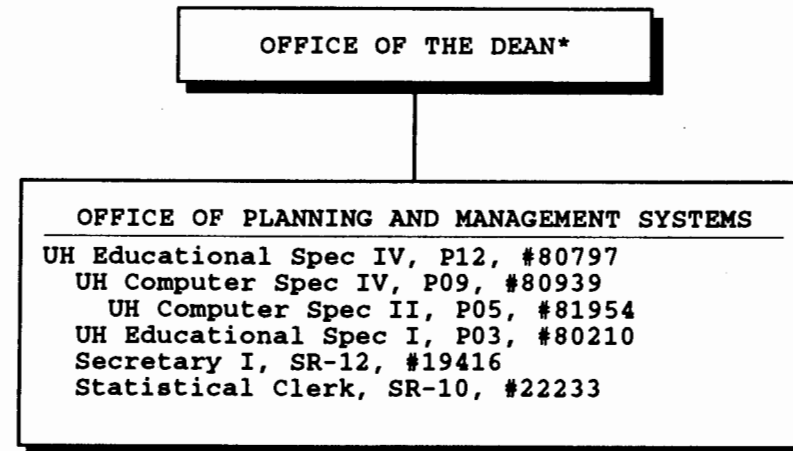


*& Director of Cooperative Science & Education

CHART UPDATED
JUN 30 1993
DATE _____

STATE OF HAWAII
UNIVERSITY OF HAWAII
UNIVERSITY OF HAWAII AT MANOA
COLLEGE OF TROPICAL AGRICULTURE & HUMAN RESOURCES

OFFICE OF PLANNING AND MANAGEMENT SYSTEMS
CHART VII

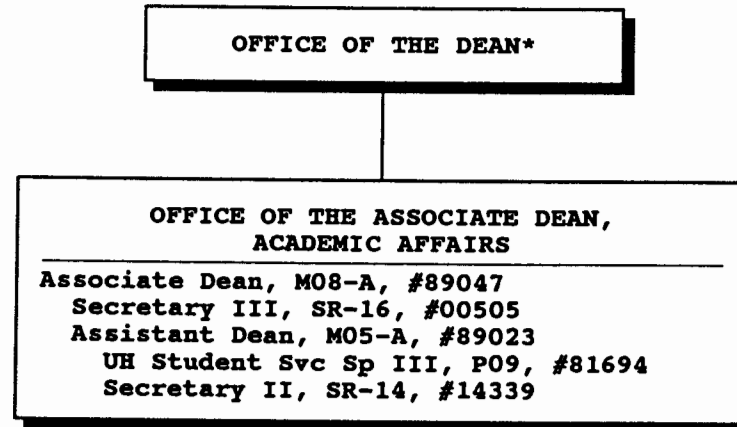


* & Director of Cooperative Science & Education

CHART UPDATED
JUN 30 1993
DATE _____

STATE OF HAWAII
UNIVERSITY OF HAWAII
UNIVERSITY OF HAWAII AT MANOA
COLLEGE OF TROPICAL AGRICULTURE & HUMAN RESOURCES

OFFICE OF THE ASSOCIATE DEAN, ACADEMIC AFFAIRS
CHART VIII



* & Director of Cooperative Science & Education

CHART UPDATED
DATE JUN 30 1993

STATE OF HAWAII
UNIVERSITY OF HAWAII
UNIVERSITY OF HAWAII AT MANOA
COLLEGE TROPICAL AGRICULTURE & HUMAN RESOURCES

OFFICE OF THE DIRECTOR, HITAHR
CHART IX

OFFICE OF THE DEAN*

OFFICE OF THE DIRECTOR
HAWAII INSTITUTE OF TROPICAL AGRICULTURE & HUMAN RESOURCES

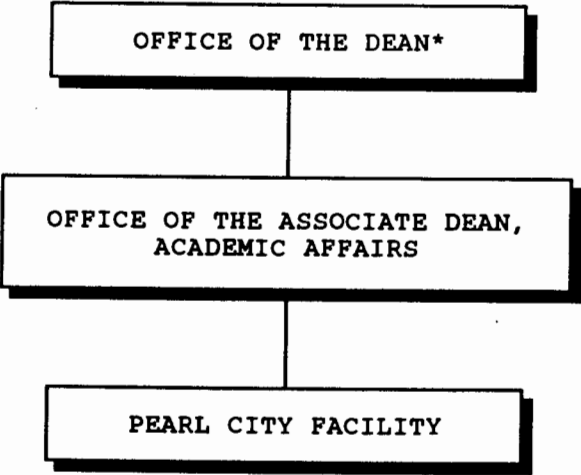
Director, HITAHR, M11-A, #89124
Secretary III, SR-16, #00425
Clerk-Steno III, SR-11, #03397 (.50)
Clerk-Typist II, SR-08, #42680
Asst Dir, HITAHR, (Agriculture & Applied Behavioral Sciences
Research), M05-A, #89186
Secretary II, SR-14, #22831
Asst Dir, HITAHR, (Agriculture & Resource Development),
M05-A, #89017
Secretary II, SR-14, #22932
Asst Dir, HITAHR, (Cooperative Extension and County Programs),
M05-A, #89069
Asst Specialist, S-3, #85485, #85495
Asst Extension Agent, A-3, #85476
Clerk-Typist II, SR-08, #17592
Secretary II, SR-14, #00789
Asst Researcher, R-3, #87523

* & Director of Cooperative Science & Education

CHART UPDATED
DATE JUN 30 1993

STATE OF HAWAII
UNIVERSITY OF HAWAII
UNIVERSITY OF HAWAII AT MANOA
COLLEGE OF TROPICAL AGRICULTURE & HUMAN RESOURCES

PEARL CITY FACILITY
POSITION ORGANIZATION CHART: A



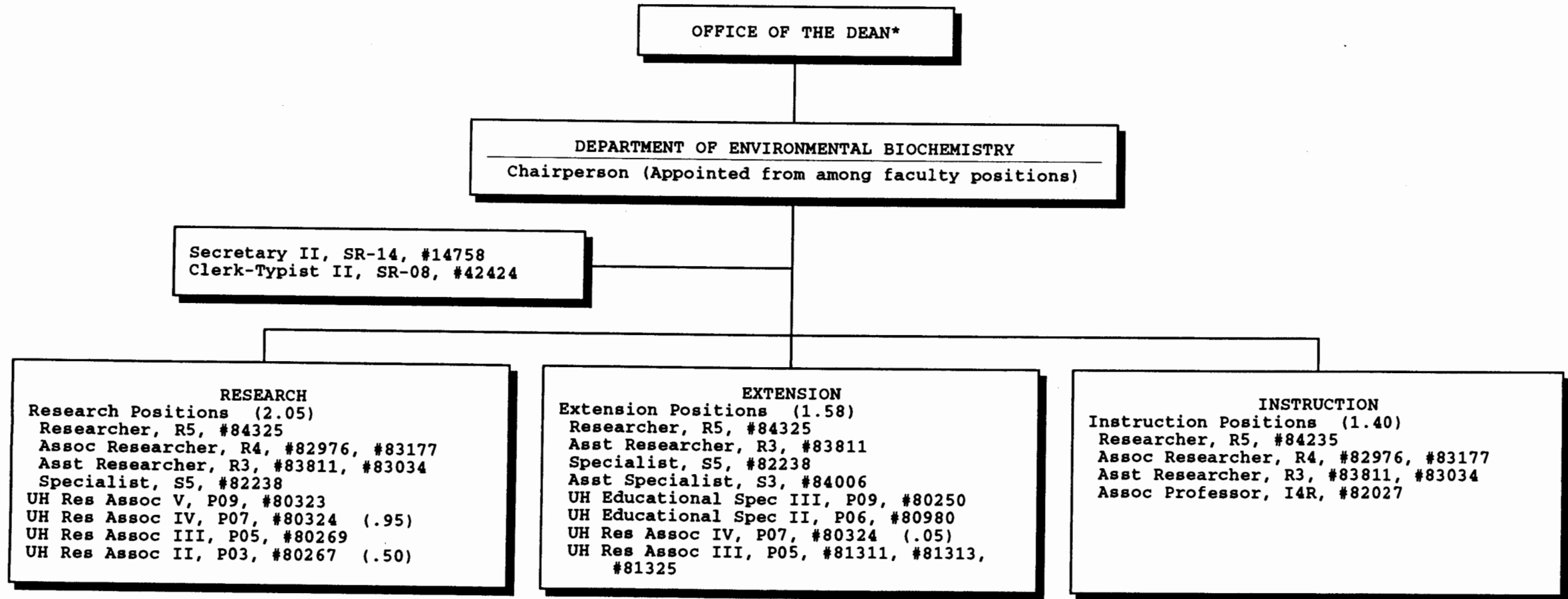
* & Director of Cooperative Science & Education

CHART UPDATED

DATE JUN 30 1993

STATE OF HAWAII
UNIVERSITY OF HAWAII
UNIVERSITY OF HAWAII AT MANOA
COLLEGE OF TROPICAL AGRICULTURE & HUMAN RESOURCES

DEPARTMENT OF ENVIRONMENTAL BIOCHEMISTRY
POSITION ORGANIZATION CHART: B



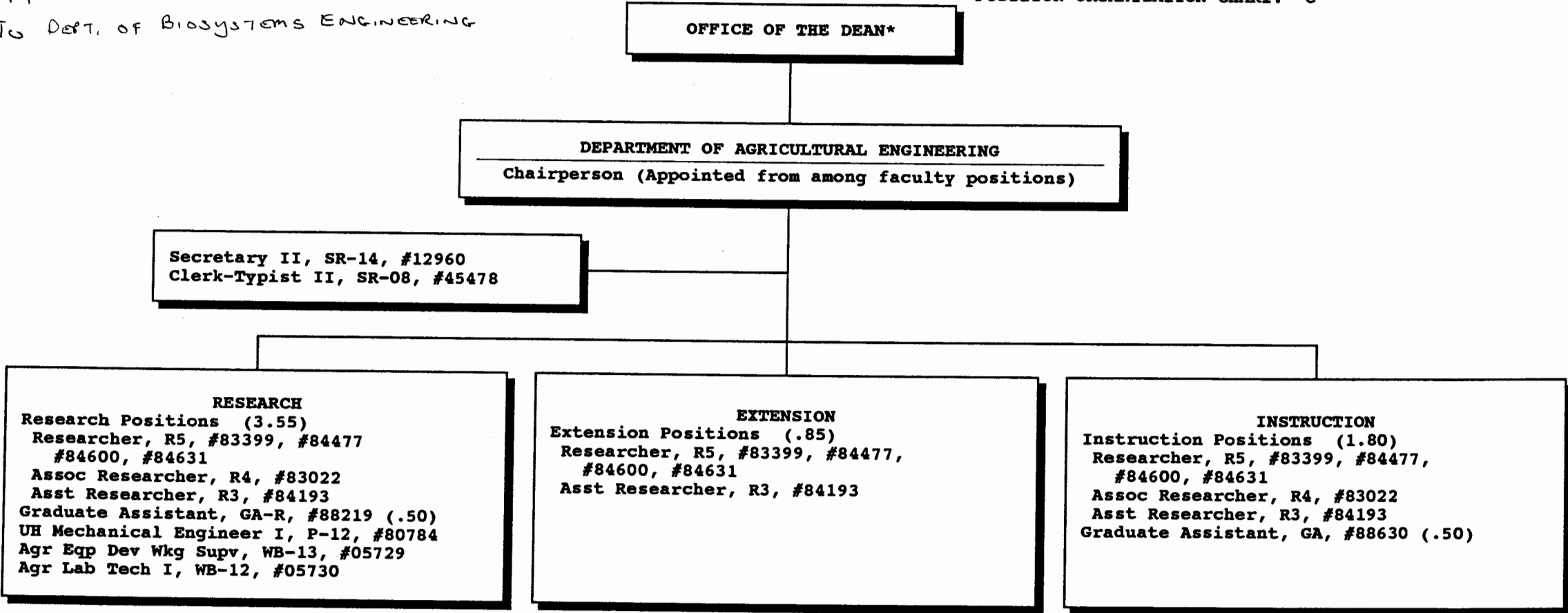
* & Director of Cooperative Science & Education

CHART UPDATED
DATE JUN 30 1993

STATE OF HAWAII
UNIVERSITY OF HAWAII
UNIVERSITY OF HAWAII AT MANOA
COLLEGE OF TROPICAL AGRICULTURE & HUMAN RESOURCES

DEPARTMENT OF AGRICULTURAL ENGINEERING
POSITION ORGANIZATION CHART: C

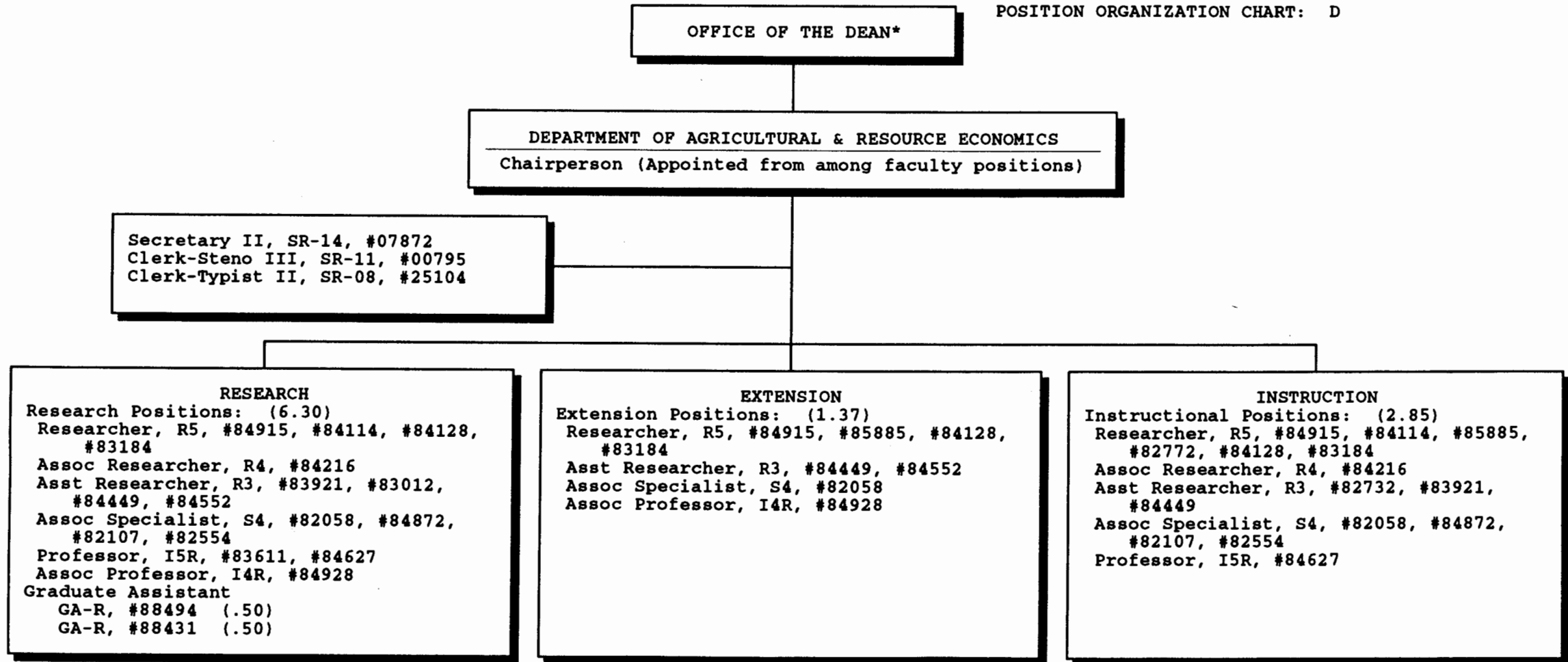
11/8/93 NAME CHANGE APPROVED BY PRESIDENT
TO DEPT. OF BIOSYSTEMS ENGINEERING



*& Director of Cooperative Science & Education

CHART UPDATED
DATE JUN 30 1993

STATE OF HAWAII
UNIVERSITY OF HAWAII
UNIVERSITY OF HAWAII AT MANOA
COLLEGE OF TROPICAL AGRICULTURE & HUMAN RESOURCES
DEPARTMENT OF AGRICULTURAL & RESOURCE ECONOMICS
POSITION ORGANIZATION CHART: D

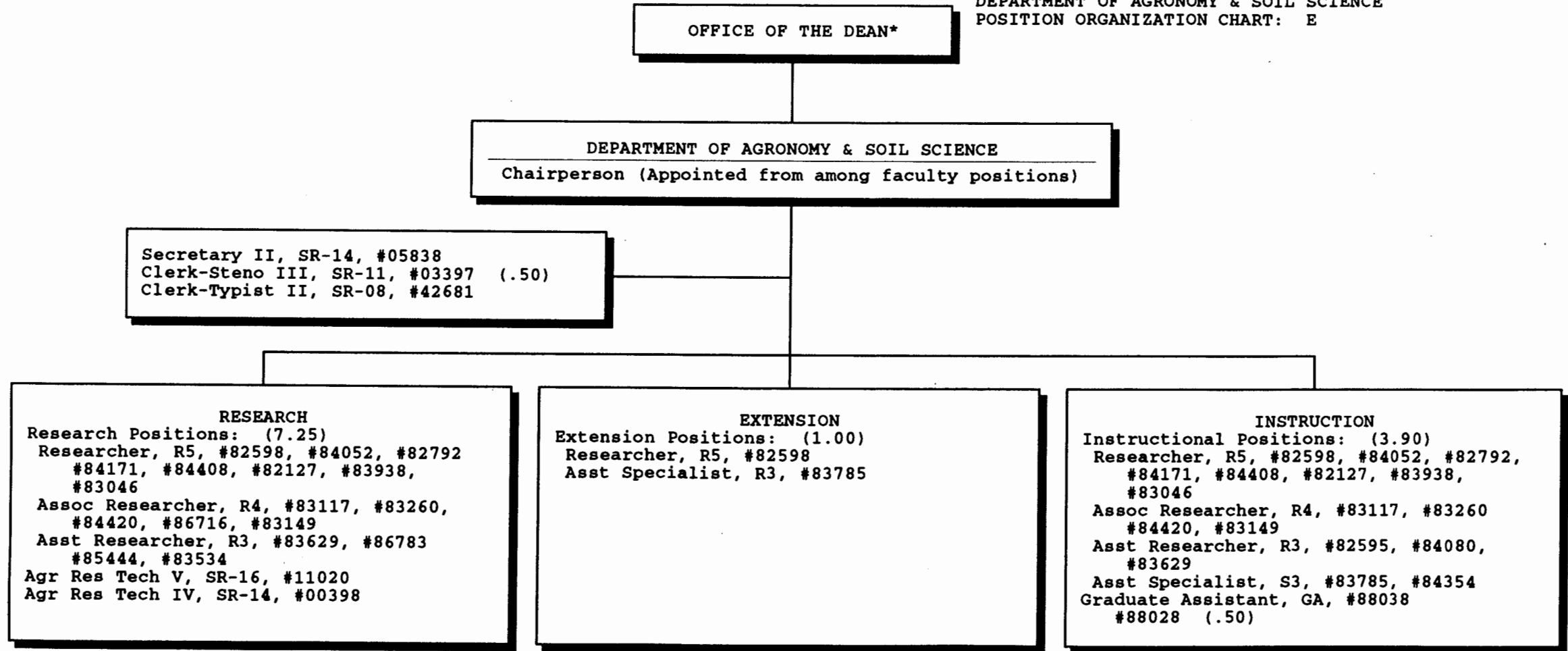


* & Director of Cooperative Science & Education

CHART UPDATED
JUN 30 1993
DATE _____

STATE OF HAWAII
UNIVERSITY OF HAWAII
UNIVERSITY OF HAWAII AT MANOA
COLLEGE OF TROPICAL AGRICULTURE & HUMAN RESOURCES

DEPARTMENT OF AGRONOMY & SOIL SCIENCE
POSITION ORGANIZATION CHART: E



* & Director of Cooperative Science & Education

CHART UPDATED
DATE JUN 30 1993

STATE OF HAWAII
UNIVERSITY OF HAWAII
UNIVERSITY OF HAWAII AT MANOA
COLLEGE OF TROPICAL AGRICULTURE & HUMAN RESOURCES

DEPARTMENT OF ANIMAL SCIENCES
POSITION ORGANIZATION CHART: F

OFFICE OF THE DEAN*

DEPARTMENT OF ANIMAL SCIENCES

Chairperson (Appointed from among faculty positions)

Secretary II, SR-14, #00801
Clerk-Typist II, SR-08, #00424, #42682

RESEARCH

Research Positions: (4.95)
Researcher, R5, #83862, #84454,
#83735, #84049
Assoc Researcher, R4, #82248, #84496
Asst Researcher, R3, #84228, #83633,
Assoc Specialist, S4, #83830, #84323
Asst Specialist, S4, #82920
Graduate Assistant, GA-R, #88303 (.50)
UH Res Assoc V, P09, #80410
UH Res Assoc IV, P07, #80392
UH Computer Spec IV, P09, #80037 (.20)
Agr Res Tech VI, SR-18, #00428
Agr Res Tech V, SR-16, #00395, #00396
#00432, #11024
Agr Res Tech IV, SR-14, #00412, #00433
Agr Res Tech III, SR-11, #00401, #00418,
#00420, #03712, #00434
Agr Res Aid II, SR-9, #00410, #00441,
#04481, #04484, #15515
Equipment Operator III, WB-09, #00419

EXTENSION

Extension Positions: (3.85)
Researcher, R5, #83862
Assoc Researcher, R4, #83070
Asst Researcher, R3, #83633
Assoc Specialist, S4, #83830, #84323
Asst Specialist, S3, #82920, #83017,
UH Computer Spec IV, P09, #80037 (.80)

INSTRUCTION

Instructional Positions: (2.95)
Researcher, R5, #83862, #84454,
#83735, #84049
Assoc Researcher, R4, #82248, #84496
Asst Researcher, R3, #84228, #83633,
Assoc Specialist, R4, #83830
Asst Specialist, R3, #82920, #83017
Graduate Assistant, GA, #88165

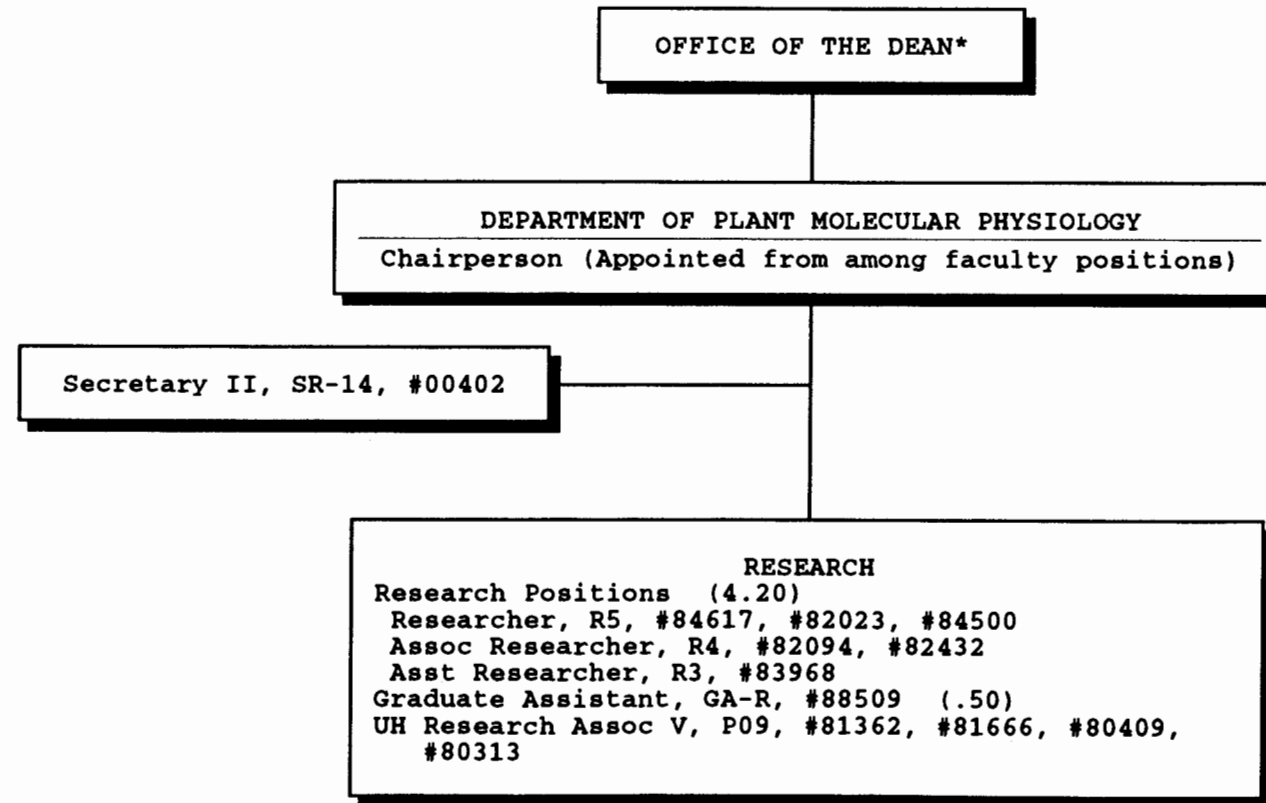
* & Director of Cooperative Science & Education

CHART UPDATED

DATE JUN 30 1993

STATE OF HAWAII
UNIVERSITY OF HAWAII
UNIVERSITY OF HAWAII AT MANOA
COLLEGE OF TROPICAL AGRICULTURE & HUMAN RESOURCES

DEPARTMENT OF PLANT MOLECULAR PHYSIOLOGY
POSITION ORGANIZATION CHART: G

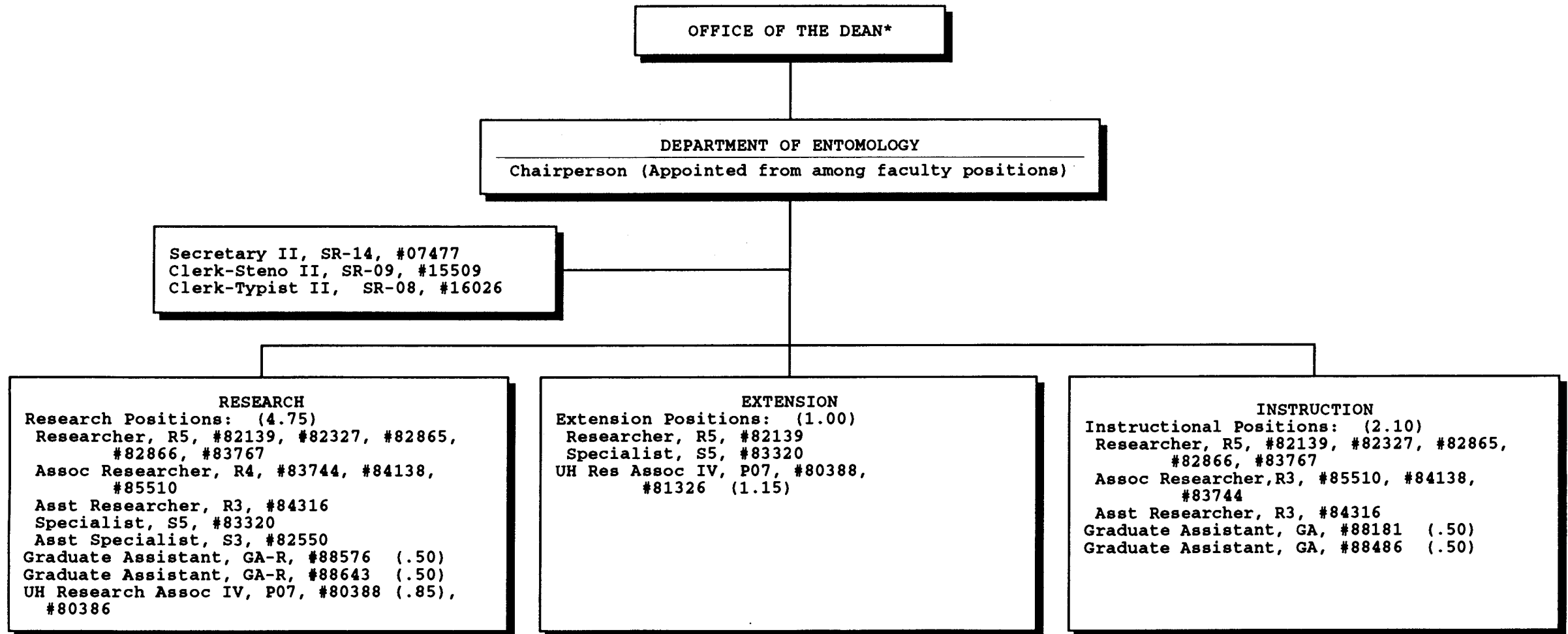


* & Director of Cooperative Science & Education

CHART UPDATED
DATE JUN 30 1993

STATE OF HAWAII
UNIVERSITY OF HAWAII
UNIVERSITY OF HAWAII AT MANOA
COLLEGE OF TROPICAL AGRICULTURE & HUMAN RESOURCES

DEPARTMENT OF ENTOMOLOGY
POSITION ORGANIZATION CHART: H

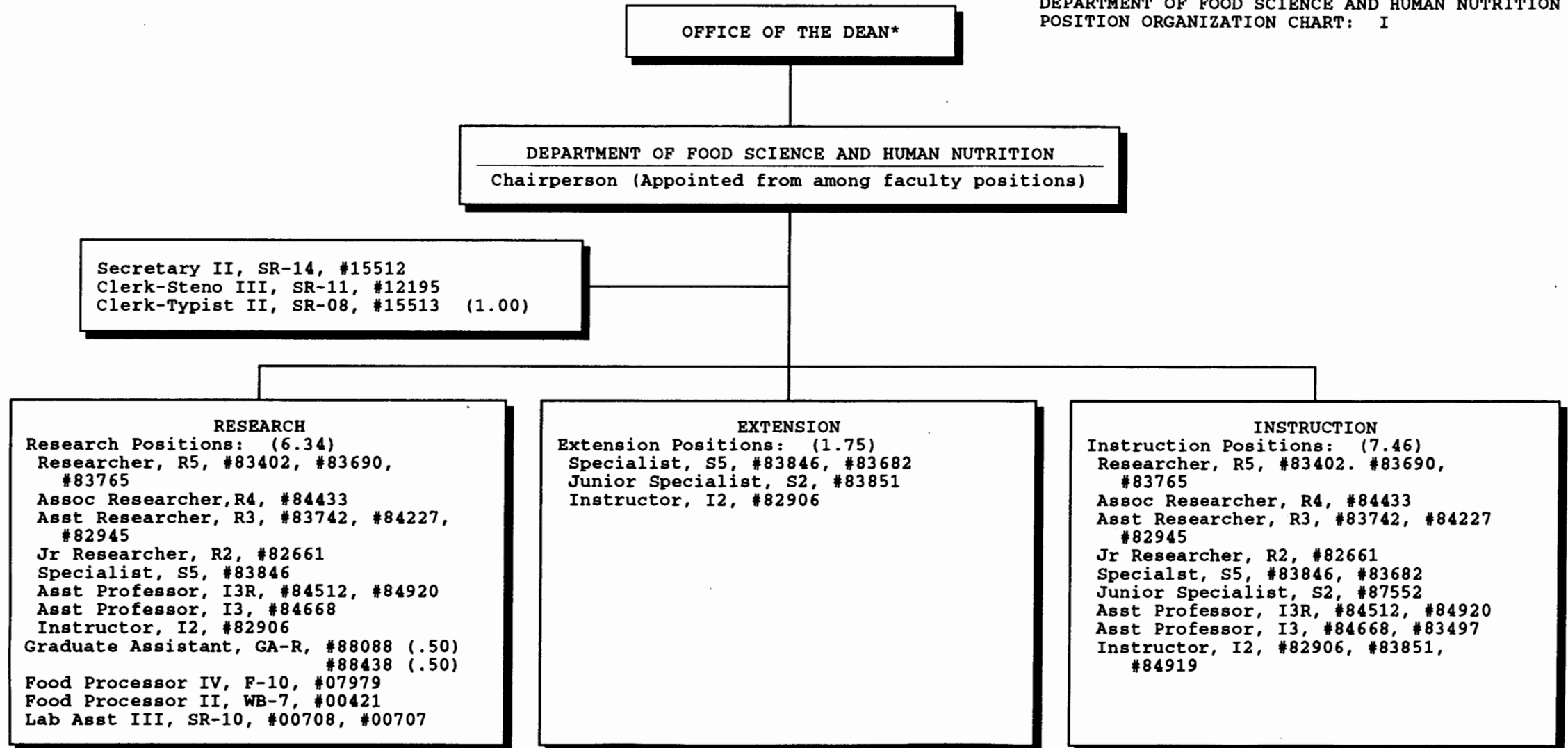


* & Director of Cooperative Science & Education

CHART UPDATED
DATE JUN 30 1993

STATE OF HAWAII
 UNIVERSITY OF HAWAII
 UNIVERSITY OF HAWAII AT MANOA
 COLLEGE OF TROPICAL AGRICULTURE & HUMAN RESOURCES

DEPARTMENT OF FOOD SCIENCE AND HUMAN NUTRITION
 POSITION ORGANIZATION CHART: I



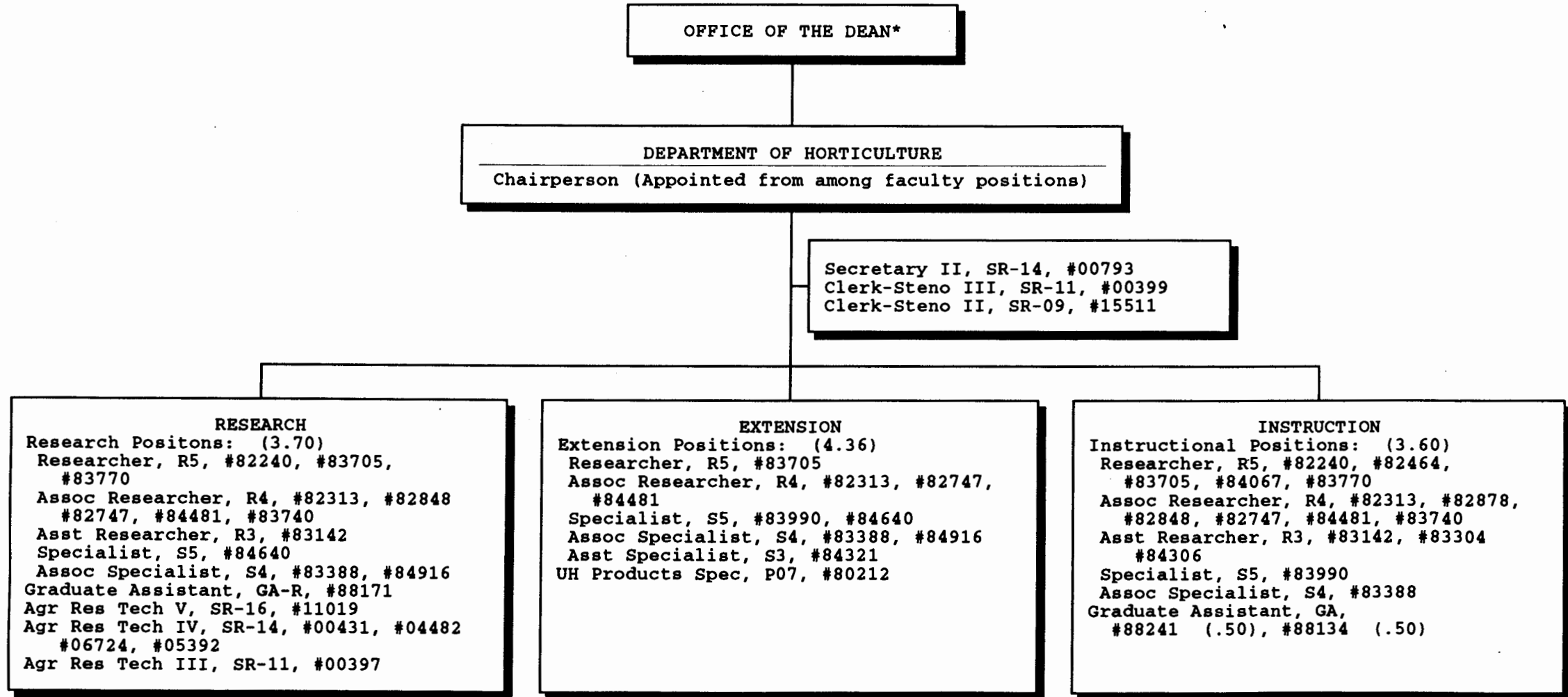
* & Director of Cooperative Science & Education

CHART UPDATED

DATE JUN 30 1993

STATE OF HAWAII
UNIVERSITY OF HAWAII
UNIVERSITY OF HAWAII AT MANOA
COLLEGE OF TROPICAL AGRICULTURE & HUMAN RESOURCES

DEPARTMENT OF HORTICULTURE
POSITION ORGANIZATION CHART: J

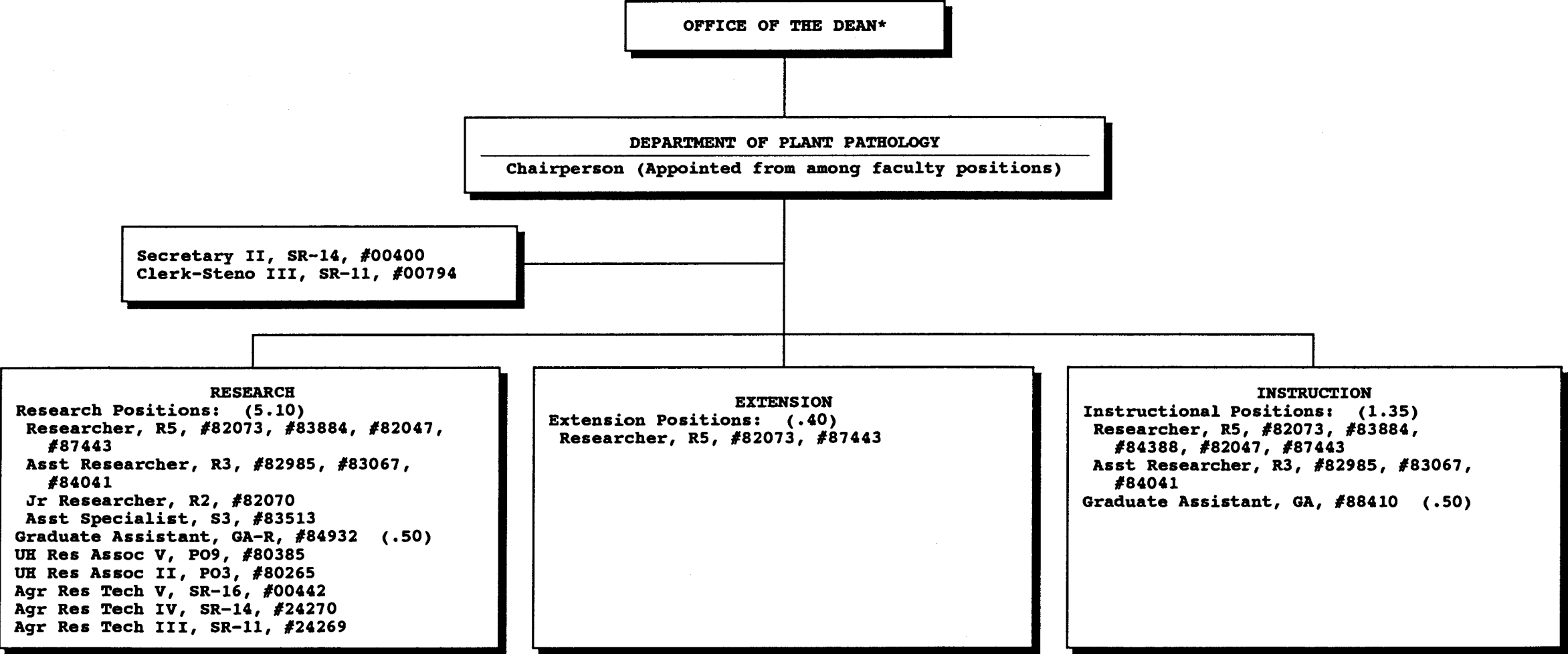


* & Director of Cooperative Science & Education

CHART UPDATED
DATE JUN 30 1993

STATE OF HAWAII
UNIVERSITY OF HAWAII
UNIVERSITY OF HAWAII AT MANOA
COLLEGE OF TROPICAL AGRICULTURE & HUMAN RESOURCES

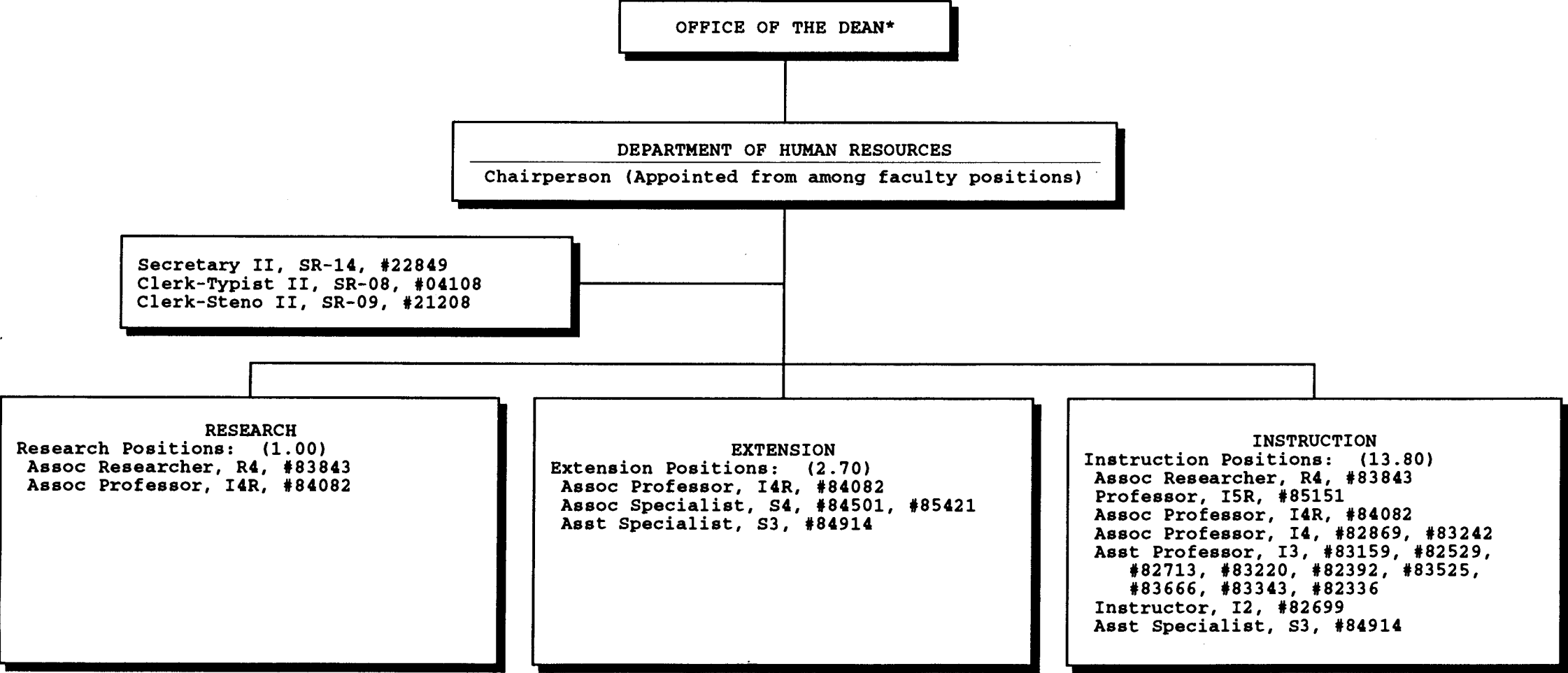
DEPARTMENT OF PLANT PATHOLOGY
POSITION ORGANIZATION CHART: K



* & Director of Cooperative Science & Education

STATE OF HAWAII
UNIVERSITY OF HAWAII
UNIVERSITY OF HAWAII AT MANOA
COLLEGE OF TROPICAL AGRICULTURE & HUMAN RESOURCES

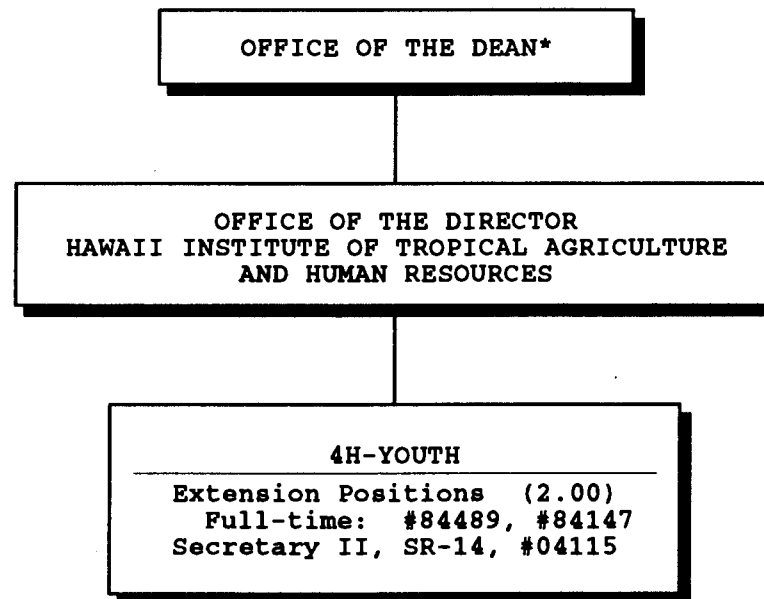
DEPARTMENT OF HUMAN RESOURCES
POSITION ORGANIZATION CHART: L



* & Director of Cooperative Science & Education

STATE OF HAWAII
UNIVERSITY OF HAWAII
UNIVERSITY OF HAWAII AT MANOA
COLLEGE OF TROPICAL AGRICULTURE & HUMAN RESOURCES

4-H OFFICE
POSITION ORGANIZATION CHART: P



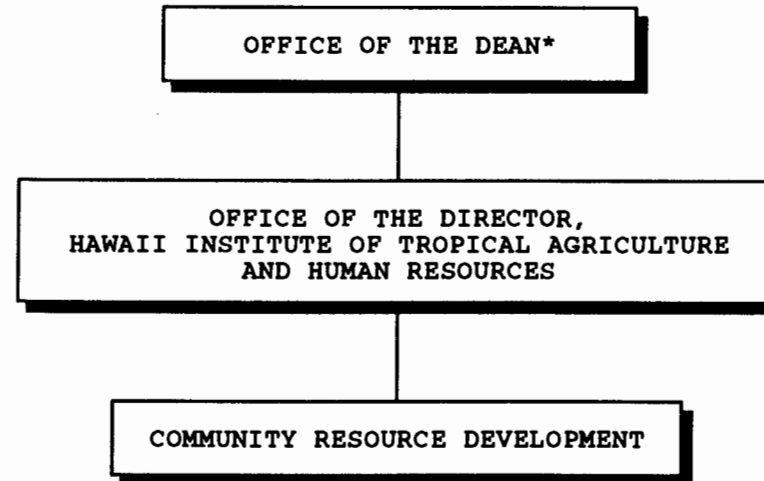
* & Director of Cooperative Science & Education

CHART UPDATED

DATE JUN 30 1993

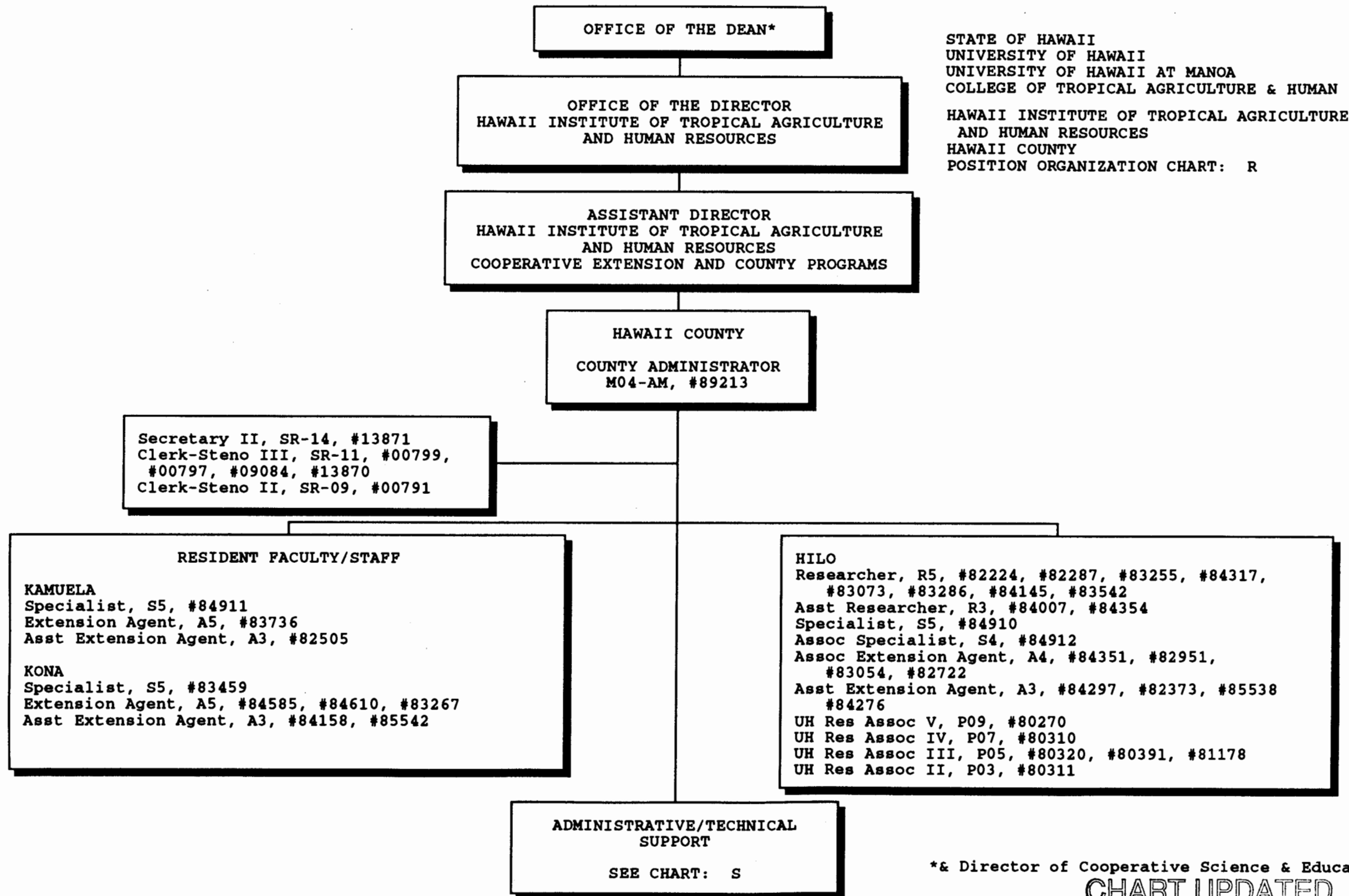
STATE OF HAWAII
UNIVERSITY OF HAWAII
UNIVERSITY OF HAWAII AT MANOA
COLLEGE OF TROPICAL AGRICULTURE & HUMAN RESOURCES

COMMUNITY RESOURCE DEVELOPMENT
POSITION ORGANIZATION CHART: Q



* & Director of Cooperative Science & Education

CHART UPDATED
JUN 30 1993
DATE _____

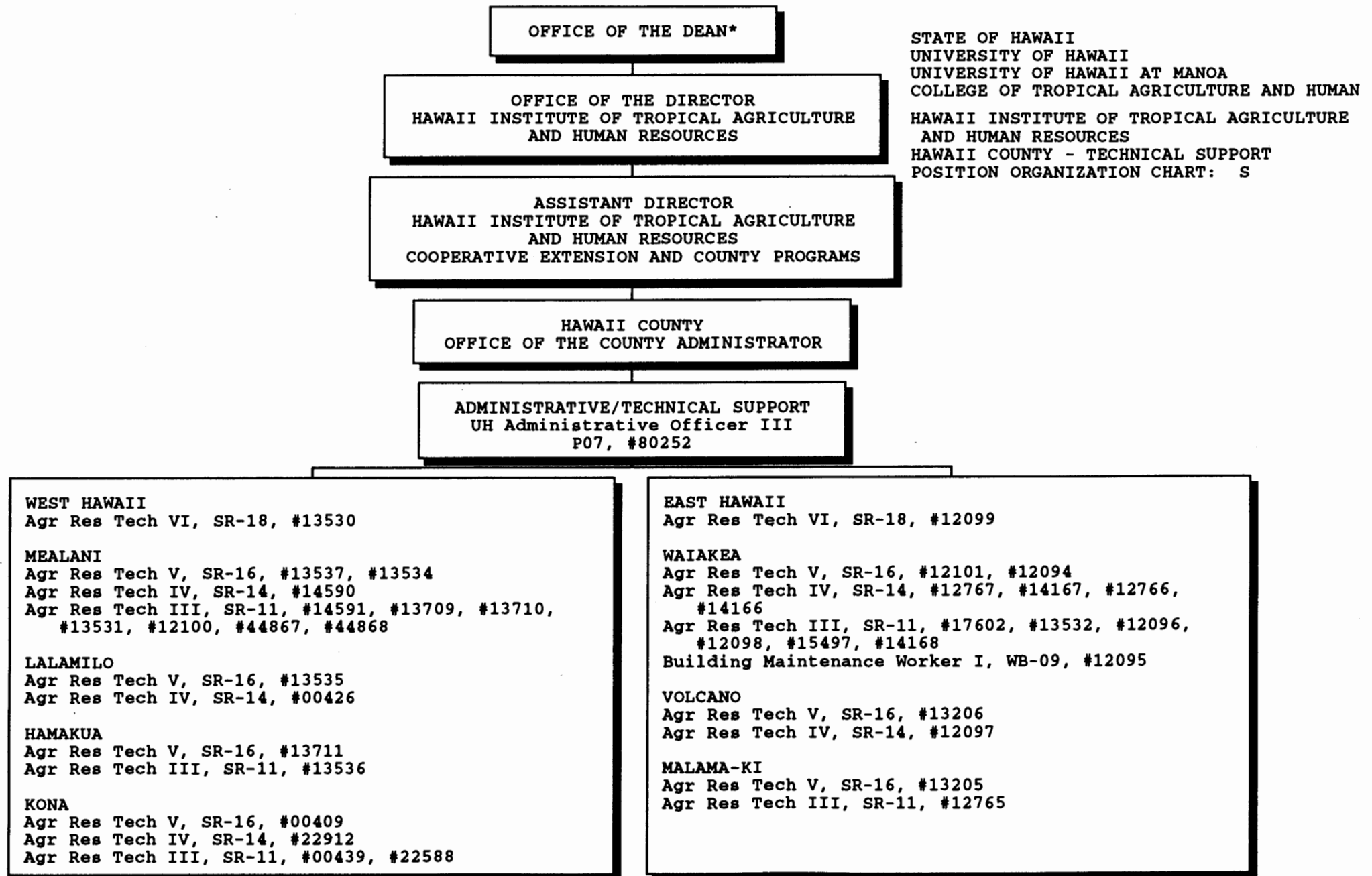


STATE OF HAWAII
UNIVERSITY OF HAWAII
UNIVERSITY OF HAWAII AT MANOA
COLLEGE OF TROPICAL AGRICULTURE & HUMAN
HAWAII INSTITUTE OF TROPICAL AGRICULTURE
AND HUMAN RESOURCES
HAWAII COUNTY
POSITION ORGANIZATION CHART: R

* & Director of Cooperative Science & Education

CHART UPDATED

DATE JUN 30 1993



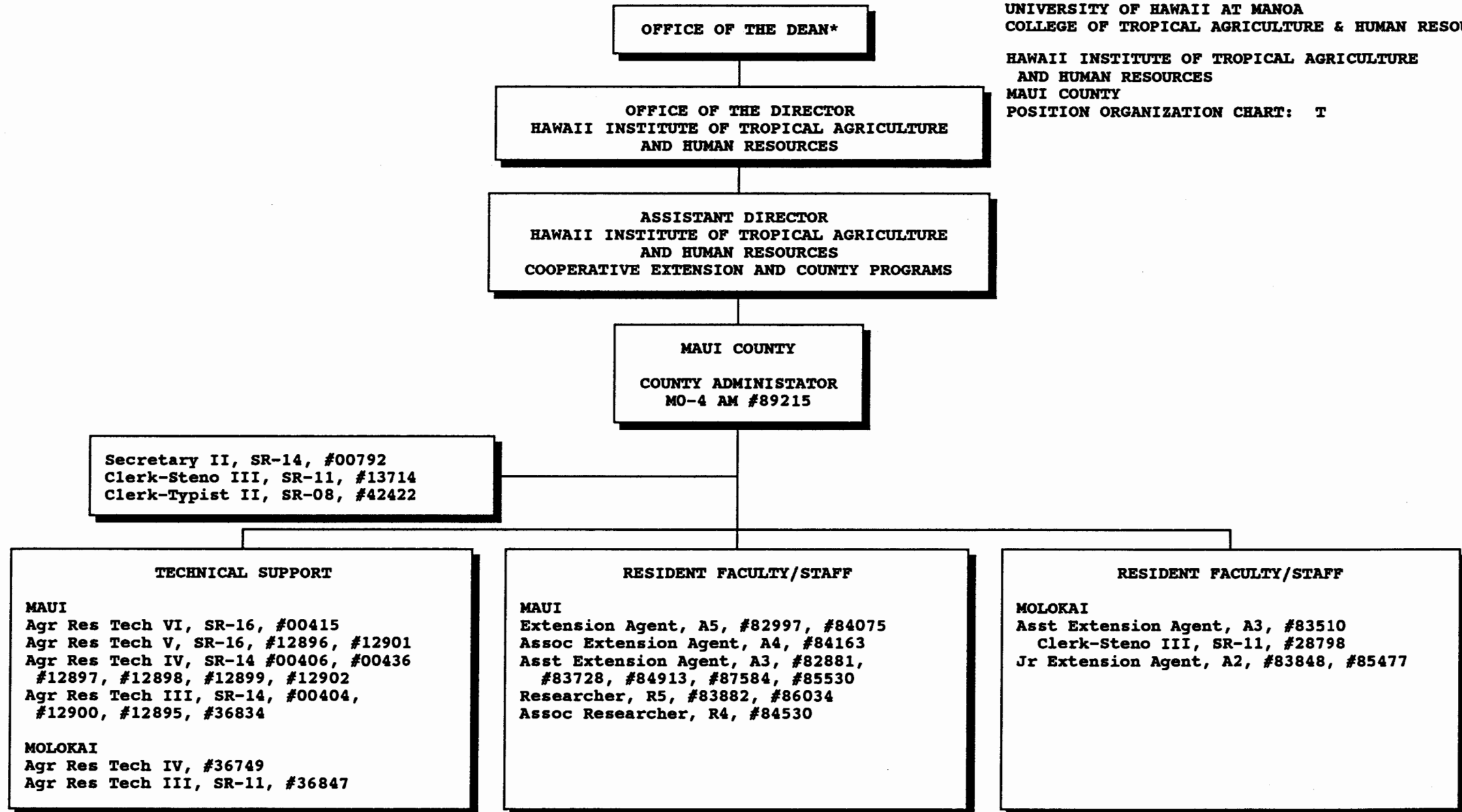
* & Director of Cooperative Science & Education

CHART UPDATED

DATE JUN 30 1993

STATE OF HAWAII
UNIVERSITY OF HAWAII
UNIVERSITY OF HAWAII AT MANOA
COLLEGE OF TROPICAL AGRICULTURE & HUMAN RESOURCES

HAWAII INSTITUTE OF TROPICAL AGRICULTURE
AND HUMAN RESOURCES
MAUI COUNTY
POSITION ORGANIZATION CHART: T

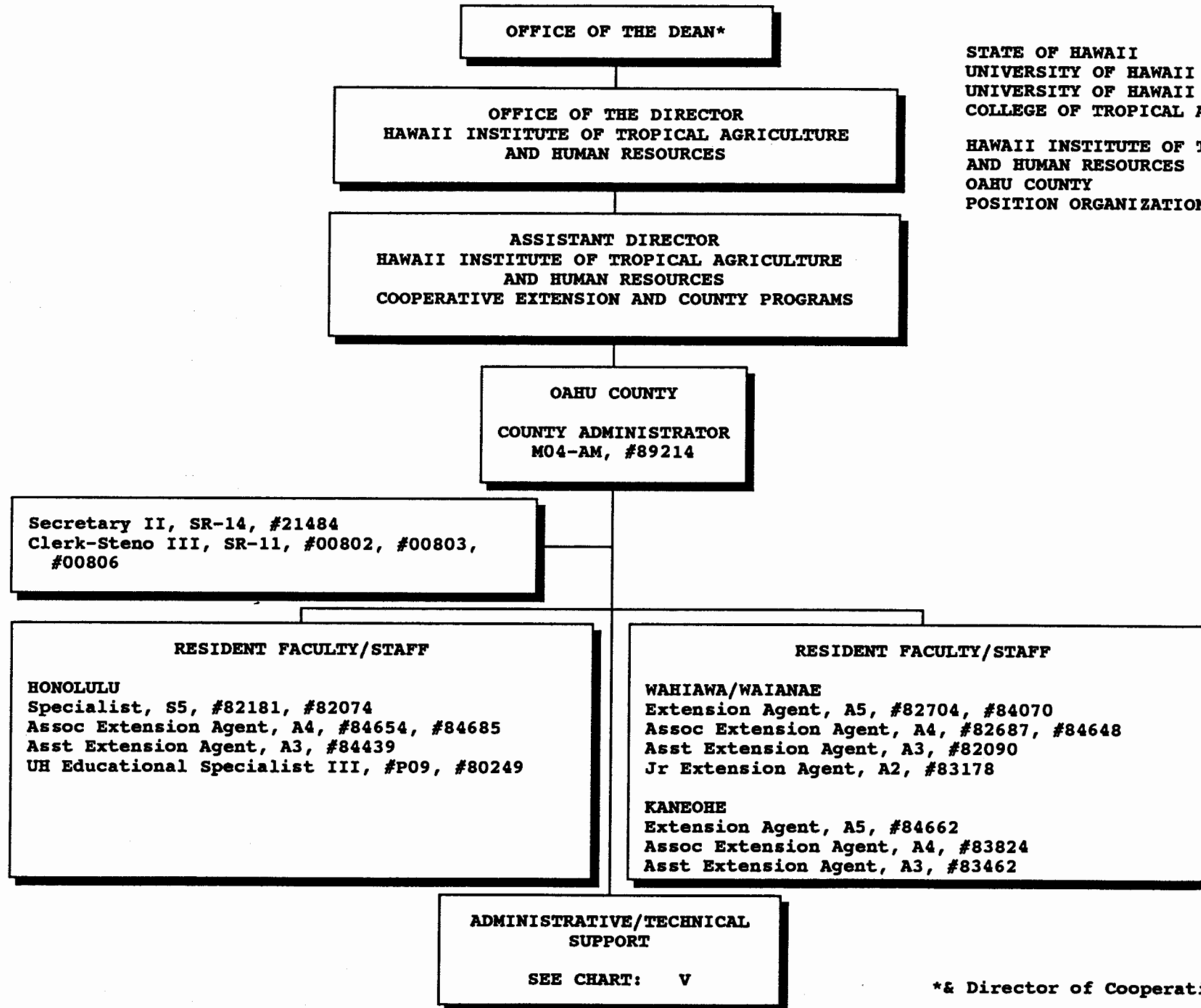


* & Director of Cooperative Science & Education

CHART UPDATED

JUN 30 1993

DATE



STATE OF HAWAII
UNIVERSITY OF HAWAII
UNIVERSITY OF HAWAII AT MANOA
COLLEGE OF TROPICAL AGRICULTURE & HUMAN RESOURCES

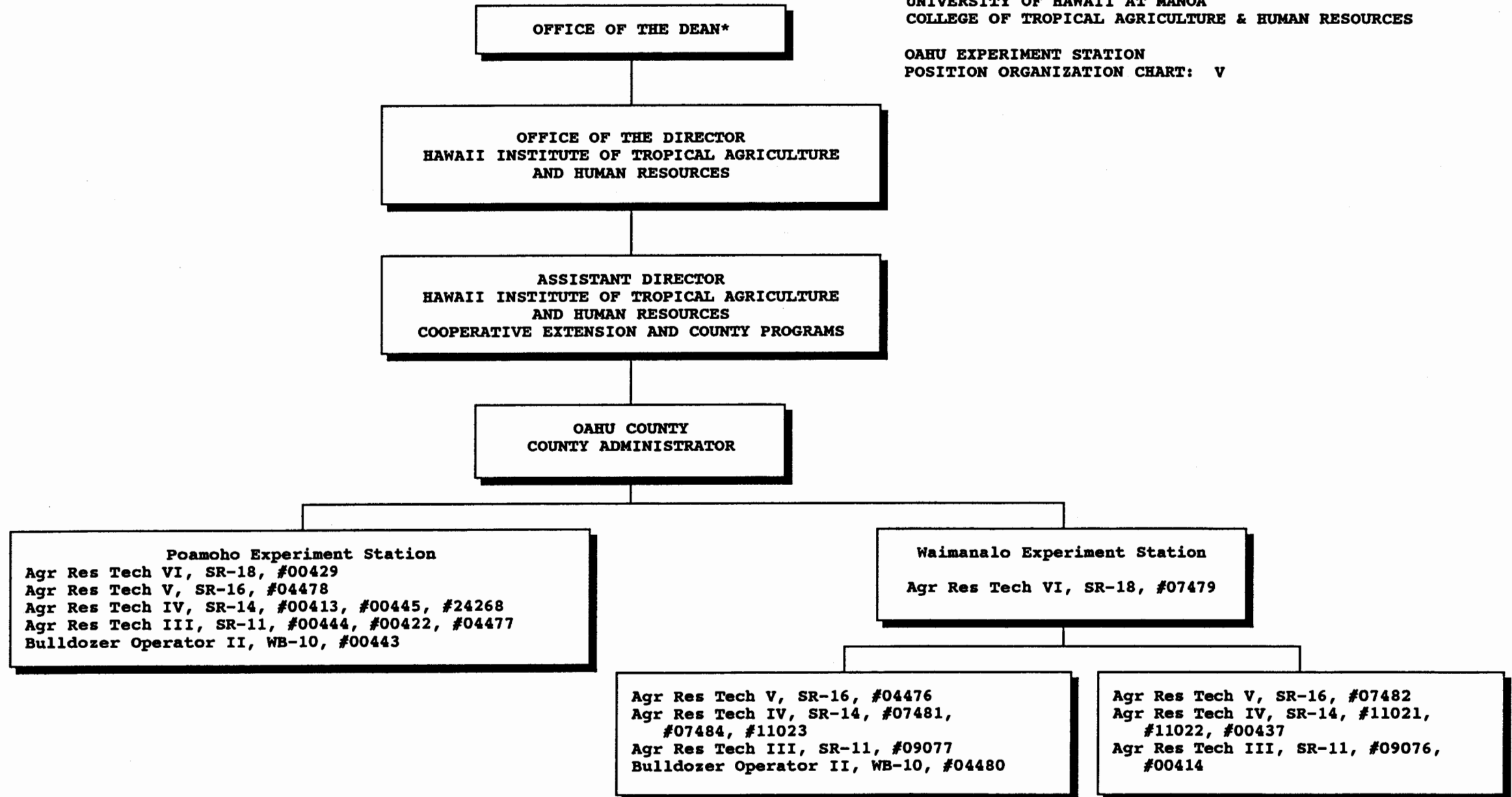
HAWAII INSTITUTE OF TROPICAL AGRICULTURE
AND HUMAN RESOURCES
OAHU COUNTY
POSITION ORGANIZATION CHART: U

* & Director of Cooperative Science & Education

CHART UPDATED
JUN 30 1993
DATE _____

STATE OF HAWAII
UNIVERSITY OF HAWAII
UNIVERSITY OF HAWAII AT MANOA
COLLEGE OF TROPICAL AGRICULTURE & HUMAN RESOURCES

OAHU EXPERIMENT STATION
POSITION ORGANIZATION CHART: V



* & Director of Cooperative Science & Education

CHART UPDATED
DATE JUN 30 1993

OFFICE OF THE DEAN*

STATE OF HAWAII
UNIVERSITY OF HAWAII
UNIVERSITY OF HAWAII AT MANOA
COLLEGE OF TROPICAL AGRICULTURE & HUMAN RESOURCES

OFFICE OF THE DIRECTOR
HAWAII INSTITUTE OF TROPICAL AGRICULTURE
AND HUMAN RESOURCES

HAWAII INSTITUTE OF TROPICAL AGRICULTURE
AND HUMAN RESOURCES
KAUAI COUNTY
POSITION ORGANIZATION CHART: W

ASSISTANT DIRECTOR
HAWAII INSTITUTE OF TROPICAL AGRICULTURE
AND HUMAN RESOURCES
COOPERATIVE EXTENSION AND COUNTY PROGRAMS

KAUAI COUNTY
County Administrator
M04-AM, #89216

Secretary II, SR-14, #04003
Clerk-Steno III, SR-11, #13872

TECHNICAL SUPPORT

Agr Res Tech VI, SR-18, #12753
Agr Res Tech V, SR-16, #12755, #13712
Agr Res Tech IV, SR-14, #12102, #12758
Agr Res Tech III, SR-11, #12754, #12760,
#12761, #14334

RESIDENT FACULTY/STAFF

Researcher, R5, #82516
Assoc Researcher, R4, #83840, #84120
Asst Researcher, R3, #85505
Assoc Extension Agent, A4, #82196
Asst Extension Agent, A3, #82175, #83816
Jr. Extension Agent, A2, #82363

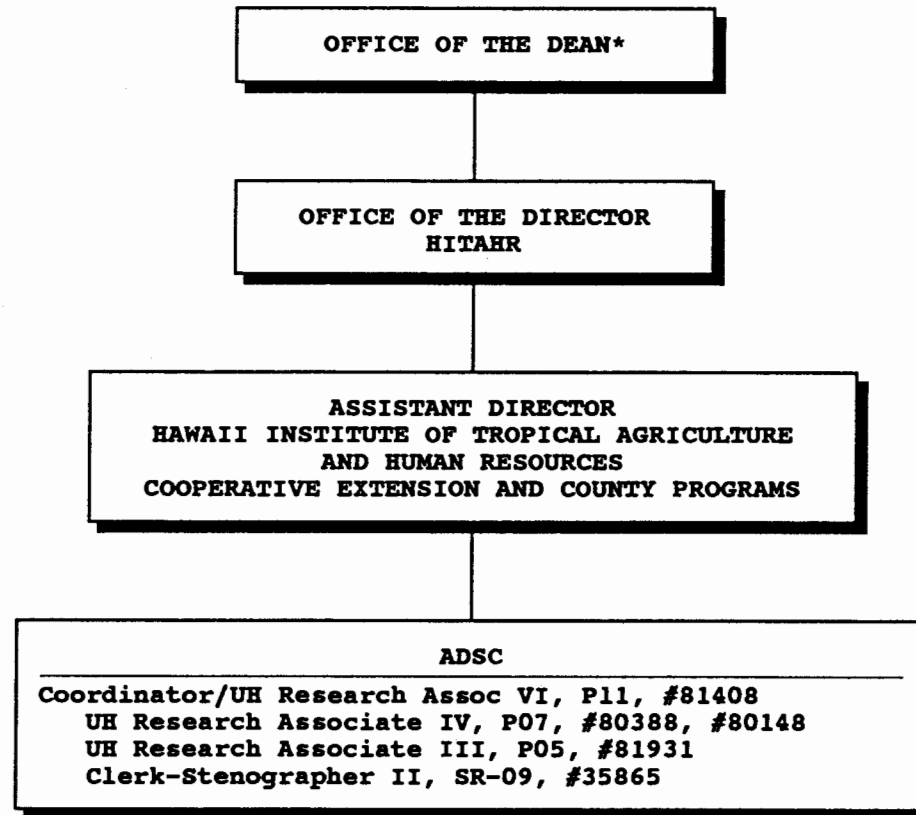
* & Director of Cooperative Science & Education

CHART UPDATED

DATE JUN 30 1993

STATE OF HAWAII
UNIVERSITY OF HAWAII
UNIVERSITY OF HAWAII AT MANOA
COLLEGE OF TROPICAL AGRICULTURE AND HUMAN RESOURCES

AGRICULTURAL DIAGNOSTIC SERVICE CENTER
POSITION ORGANIZATION CHART: X

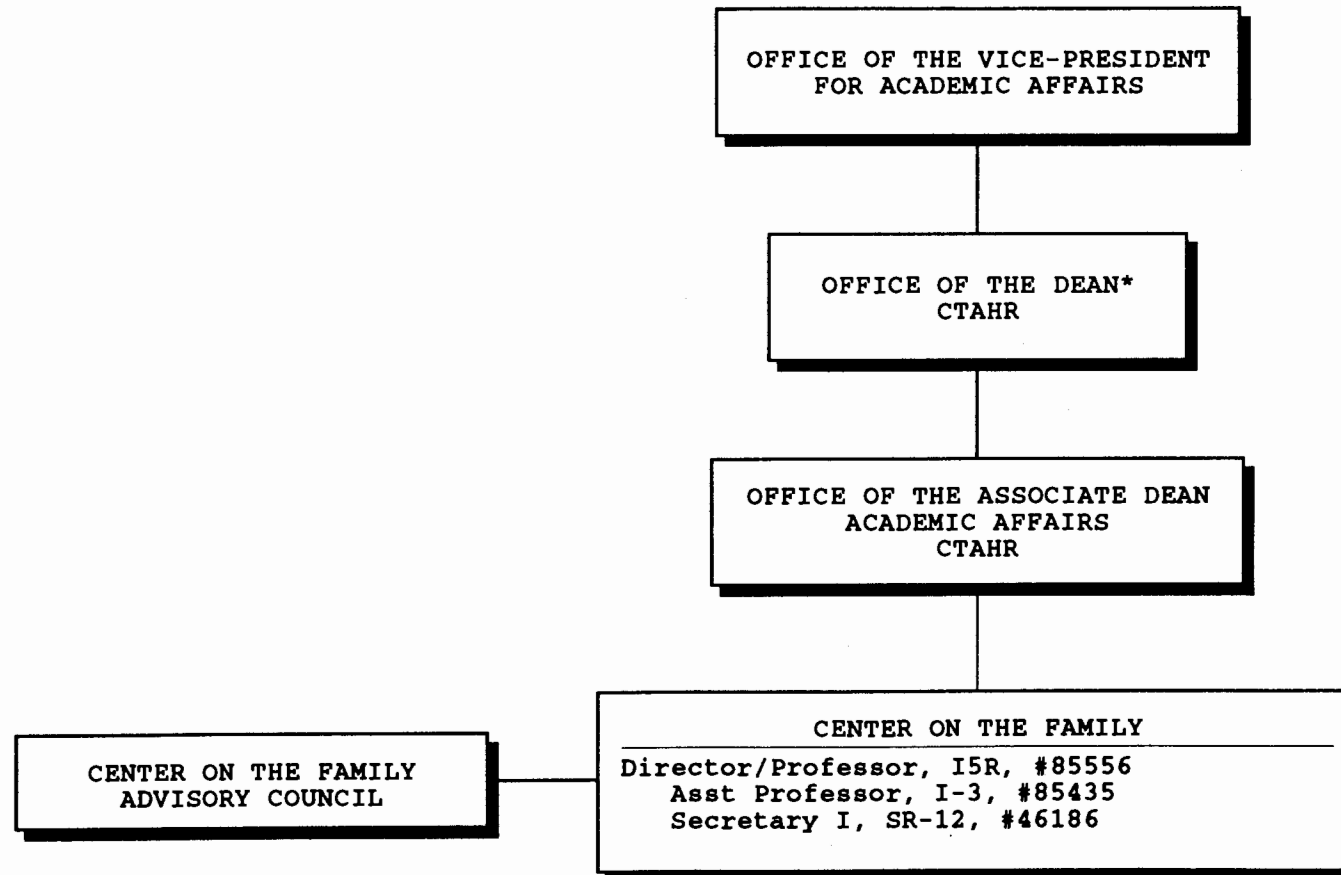


* & Director of Cooperative Science & Education

CHART UPDATED
JUN 30 1993
DATE _____

STATE OF HAWAII
UNIVERSITY OF HAWAII
UNIVERSITY OF HAWAII AT MANOA
COLLEGE OF TROPICAL AGRICULTURE AND HUMAN RESOURCES

CENTER ON THE FAMILY
POSITION ORGANIZATION CHART: Y



* & Director of Cooperative Science & Education

CHART UPDATED
DATE JUN 30 1993