

STATE OF HAWAII
UNIVERSITY OF HAWAII
SENIOR VICE PRESIDENT AND
CHANCELLOR FOR COMMUNITY COLLEGES

POSITION ORGANIZATION CHART

CHART I

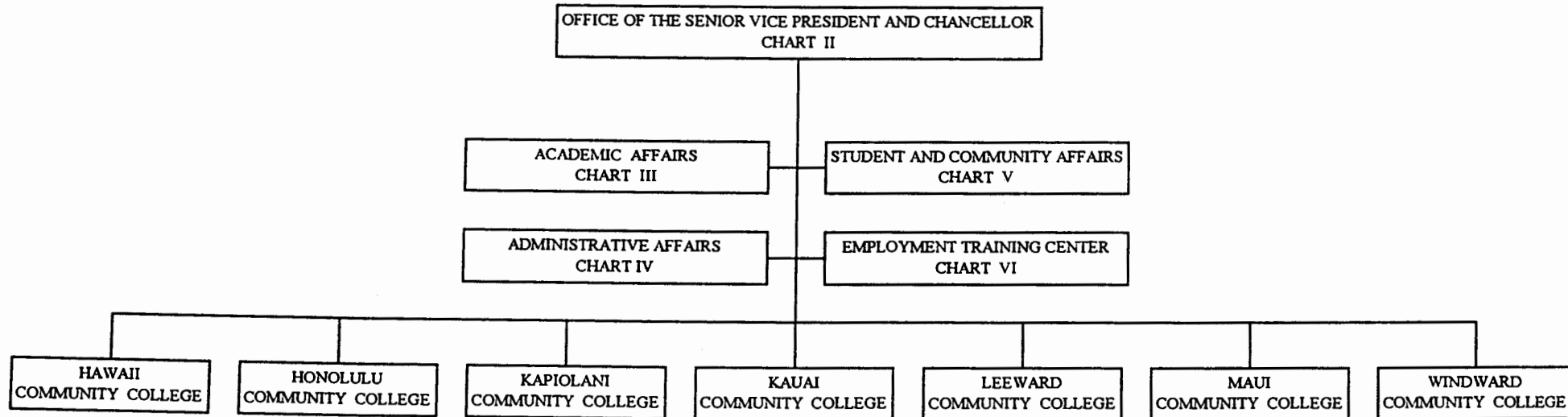
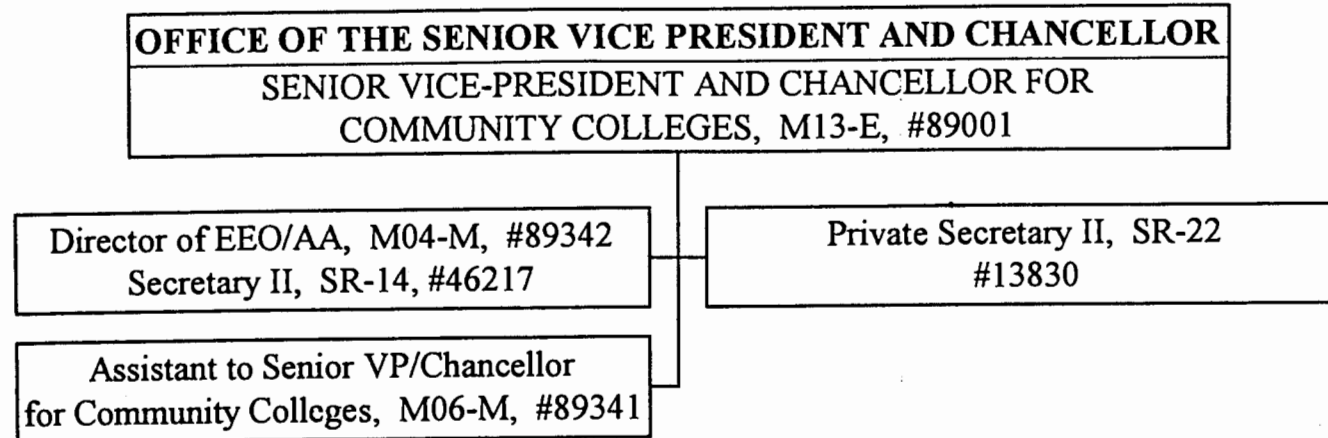


CHART UPDATED
DATE JUN 30 1994

STATE OF HAWAII
UNIVERSITY OF HAWAII
SENIOR VICE PRESIDENT AND
CHANCELLOR FOR COMMUNITY COLLEGES

POSITION ORGANIZATION CHART

CHART II



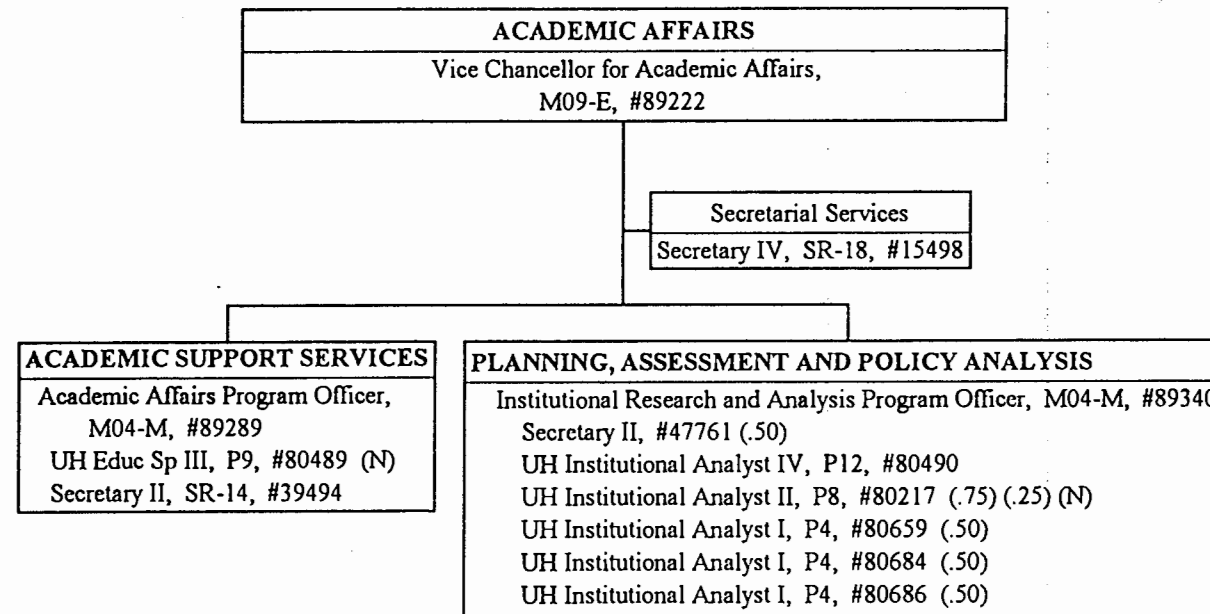
General Funds 5.00

CHART UPDATED
DATE JUN 30 1994

STATE OF HAWAII
UNIVERSITY OF HAWAII
SENIOR VICE PRESIDENT AND
CHANCELLOR FOR COMMUNITY COLLEGES

POSITION ORGANIZATION CHART

CHART III



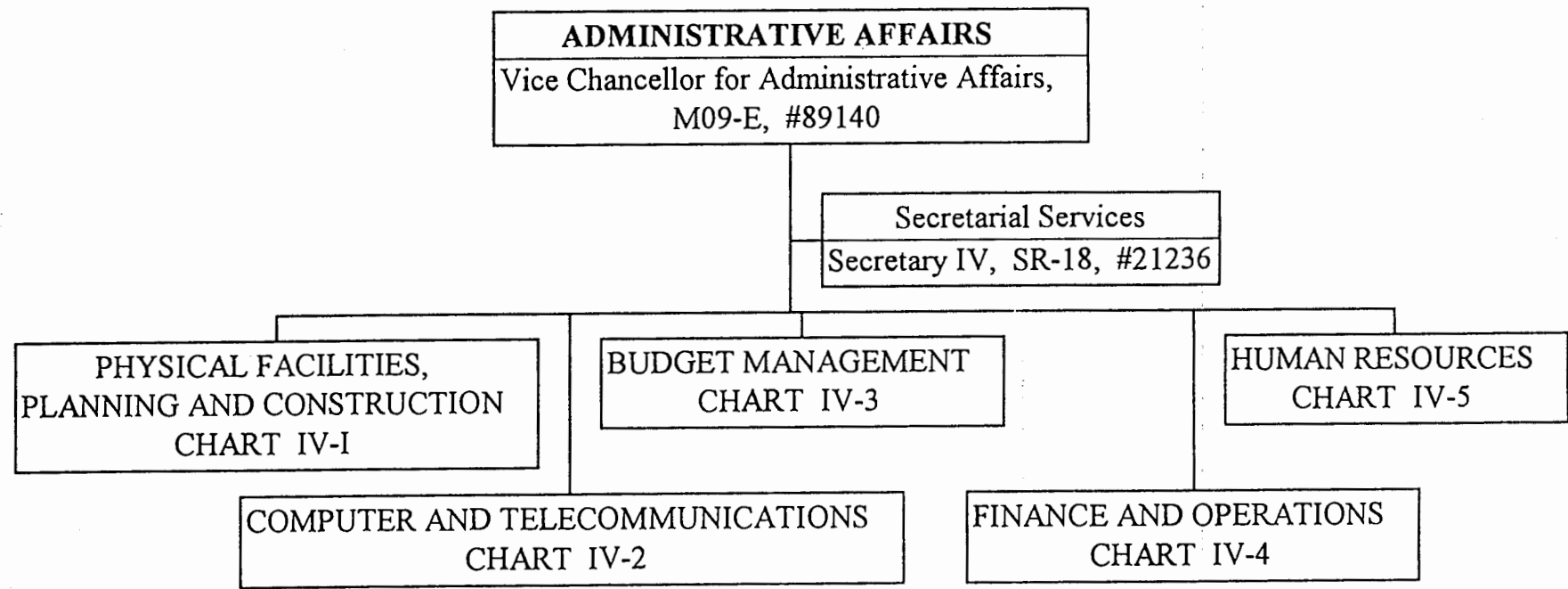
General Funds 8.75
(N) Federal Funds 1.25

CHART UPDATED
DATE JUN 30 1994

STATE OF HAWAII
UNIVERSITY OF HAWAII
SENIOR VICE PRESIDENT AND
CHANCELLOR FOR COMMUNITY COLLEGES

POSITION ORGANIZATION CHART

CHART IV



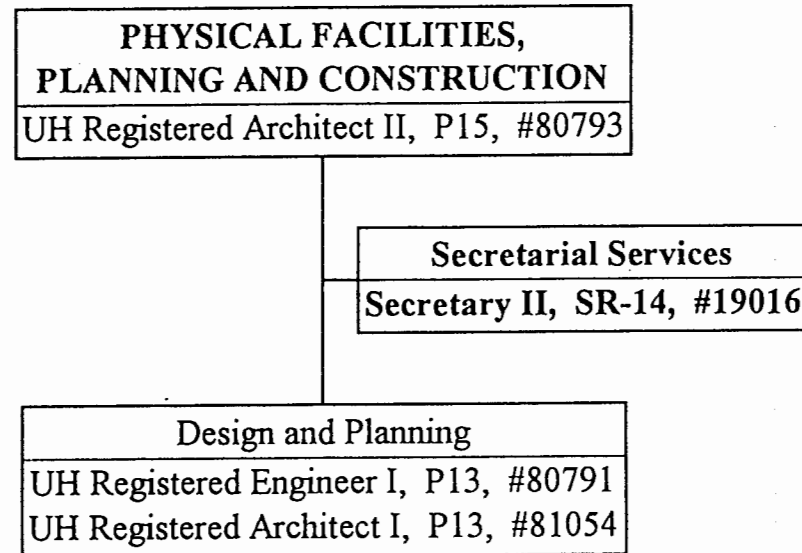
General Funds 2.00

CHART UPDATED
DATE JUN 30 1994

STATE OF HAWAII
UNIVERSITY OF HAWAII
SENIOR VICE PRESIDENT AND
CHANCELLOR FOR COMMUNITY COLLEGES

POSITION ORGANIZATION CHART

CHART IV-1



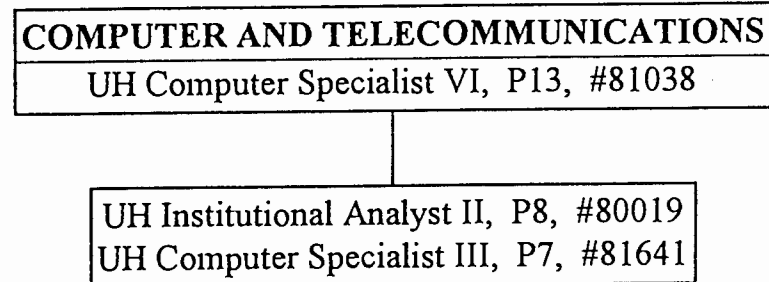
General Funds 4.00

CHART UPDATED
DATE JUN 30 1994

STATE OF HAWAII
UNIVERSITY OF HAWAII
SENIOR VICE PRESIDENT AND
CHANCELLOR FOR COMMUNITY COLLEGES

POSITION ORGANIZATION CHART

CHART IV-2



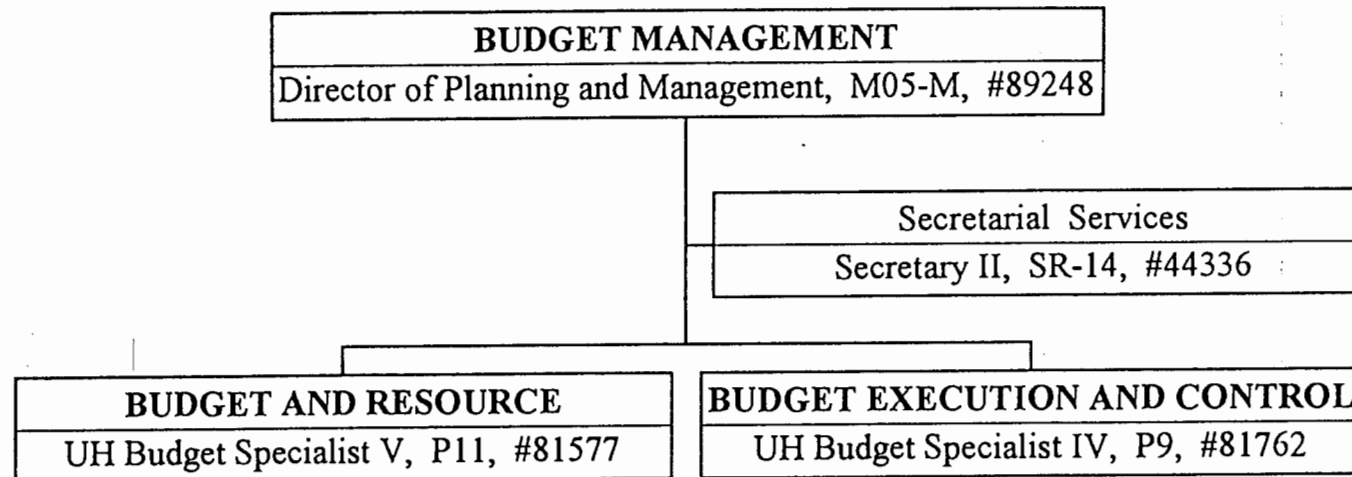
General Funds 3.00

CHART UPDATED
DATE JUN 30 1994

STATE OF HAWAII
UNIVERSITY OF HAWAII
SENIOR VICE PRESIDENT AND
CHANCELLOR FOR COMMUNITY COLLEGES

POSITION ORGANIZATION CHART

CHART IV-3



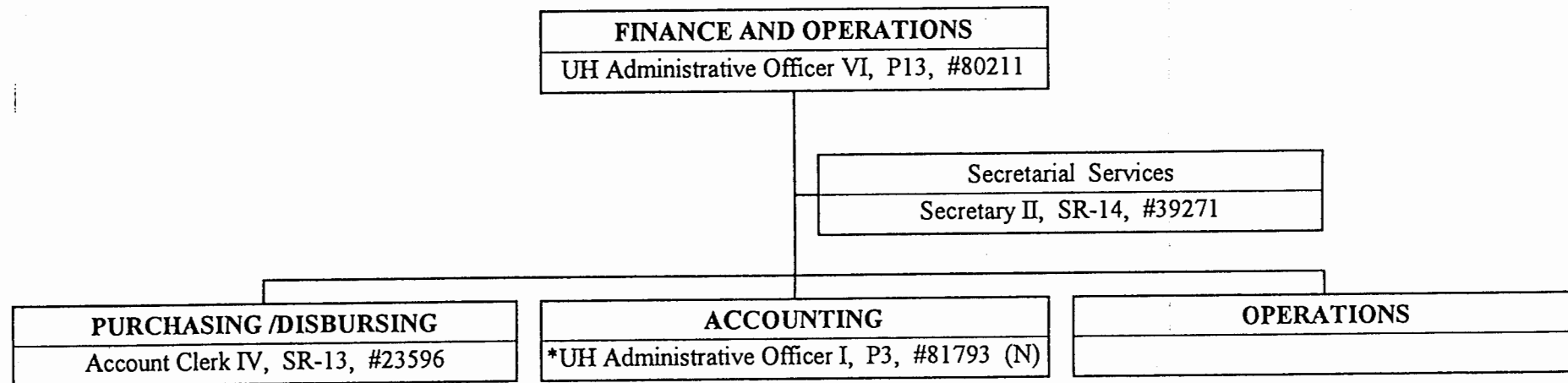
General Funds 4.00

CHART UPDATED
DATE JUN 30 1994

STATE OF HAWAII
UNIVERSITY OF HAWAII
SENIOR VICE PRESIDENT AND
CHANCELLOR FOR COMMUNITY COLLEGES

POSITION ORGANIZATION CHART

CHART IV-4



* Temporary Position - Federal Funded

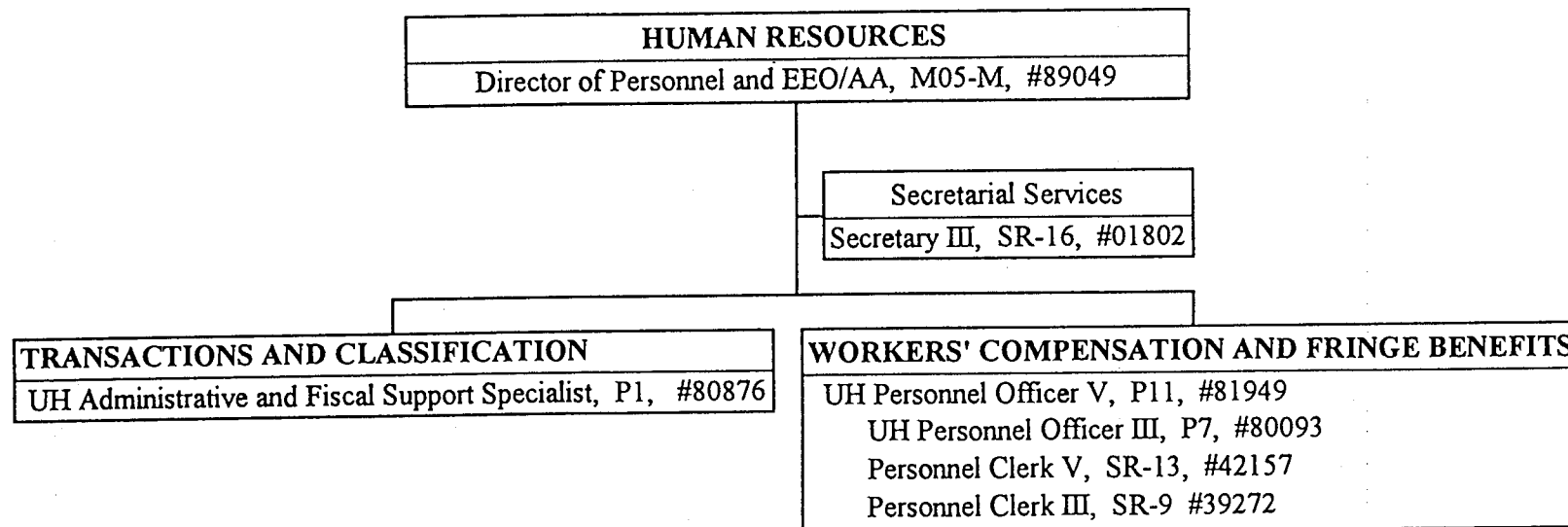
General Funds 3.00

CHART UPDATED
DATE JUN 30 1994

STATE OF HAWAII
UNIVERSITY OF HAWAII
SENIOR VICE PRESIDENT AND
CHANCELLOR FOR COMMUNITY COLLEGES

POSITION ORGANIZATION CHART

CHART IV-5



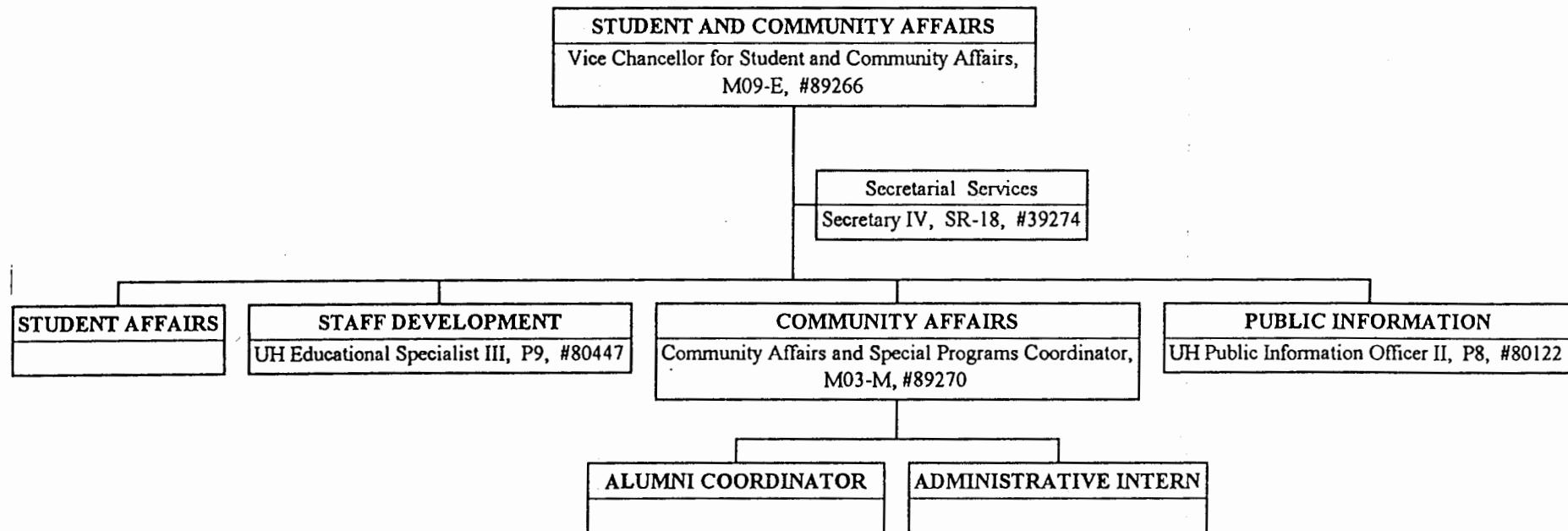
General Funds 7.00

CHART UPDATED
DATE JUN 30 1994

STATE OF HAWAII
UNIVERSITY OF HAWAII
SENIOR VICE PRESIDENT AND
CHANCELLOR FOR COMMUNITY COLLEGES

POSITION ORGANIZATION CHART

CHART V



General Funds 5.00

CHART UPDATED
DATE JUN 30 1994