

State of Hawaii
University of Hawaii
Kapiolani Community College

Position Organization Chart

Chart I

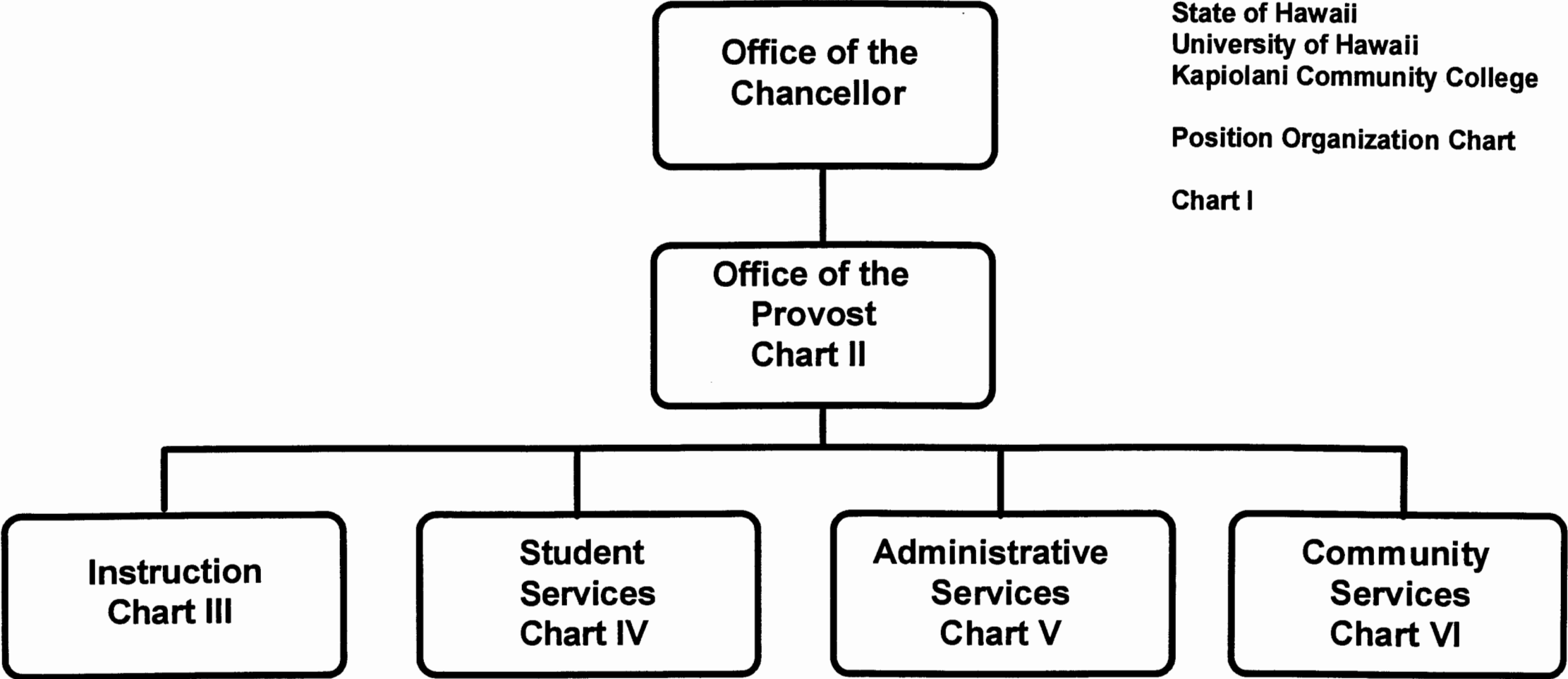
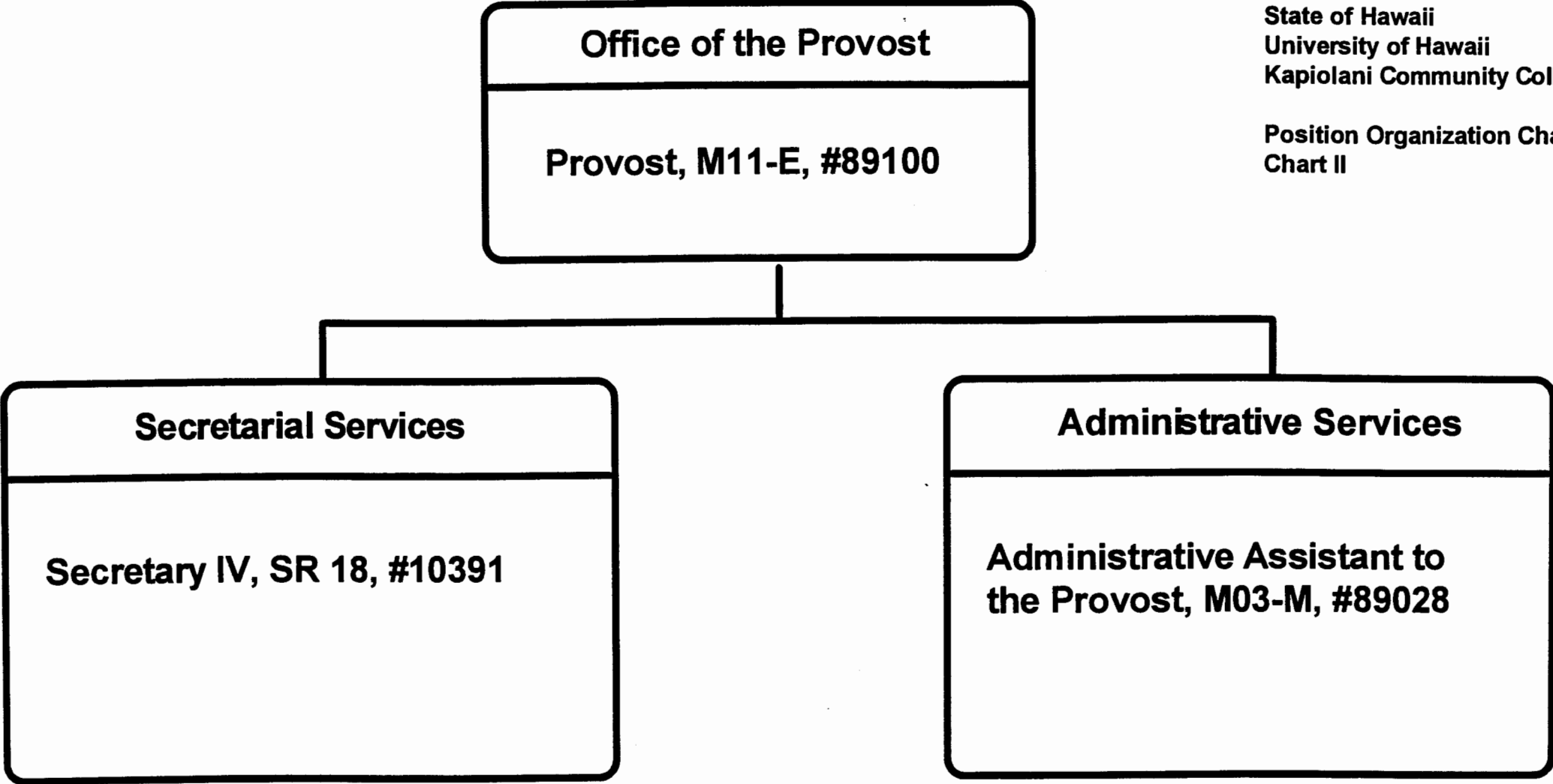


Chart Updated
Date June 30, 1994

CHART UPDATED
DATE JUN 30 1994



State of Hawaii
University of Hawaii
Kapiolani Community College

Position Organization Chart
Chart II

Chart Updated
Date June 30, 1994

General Funds (3.00)

CHART UPDATED
DATE JUN 30 1994

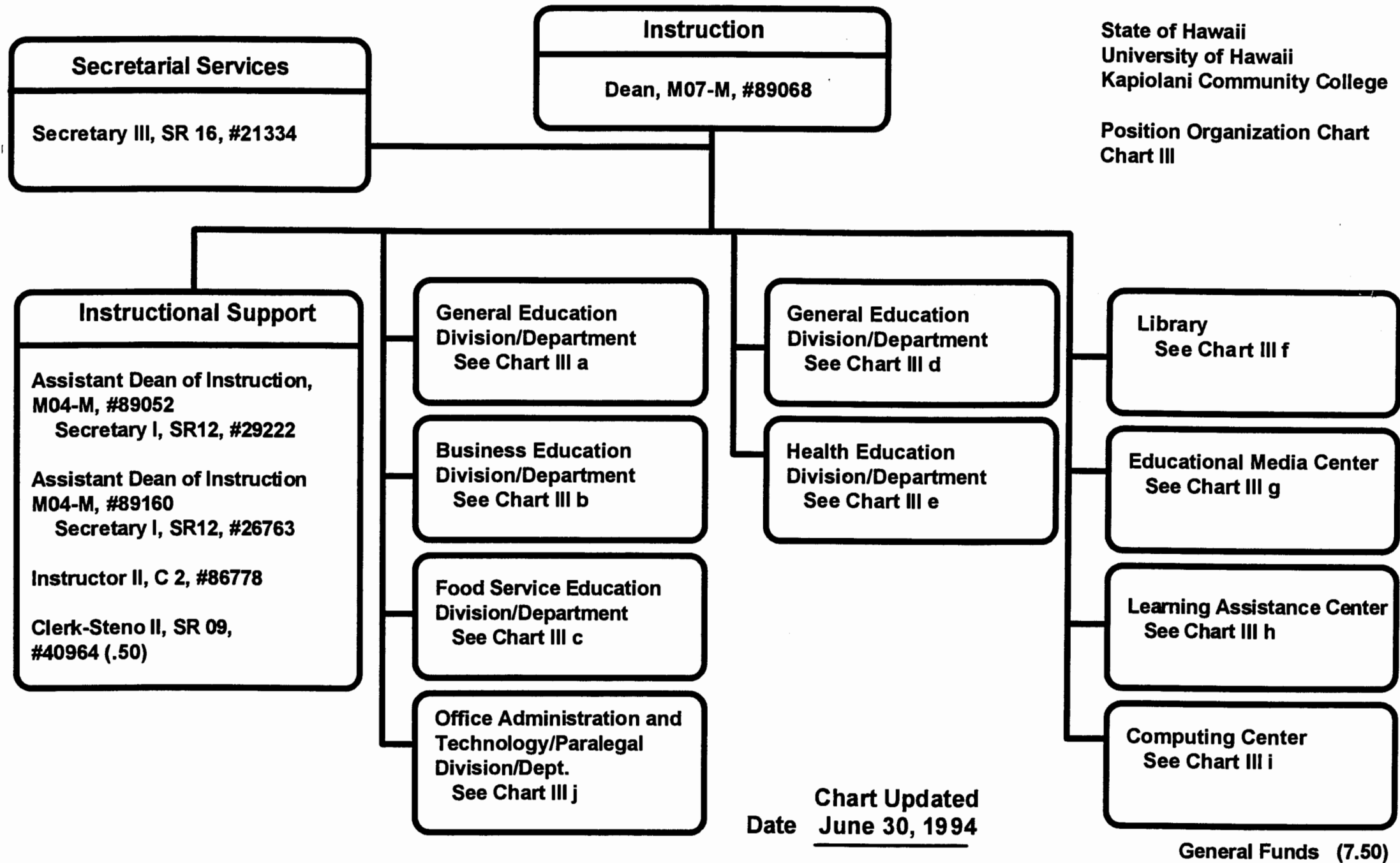


CHART UPDATED
DATE JUN 30 1994

General Education Division/Department

General Education

Social Science

Chairperson, # _____ *

Faculty Total (12.00)

Full-time: #83745, #84972, #84973, #83642, #82152, #82706,
#82935, #83492, #83560, #87403, #86599, #86938

Language Arts

Chairperson, # _____ *

Faculty Total (22.50)

Full-time: #83559, #82178, #83783, #83903, #82232, #82555,
#82776, #83308, #83447, #83870, #84327, #84409,
#83795, #83123, #86596, #86594, #86595, #86604
#86798, #86803, #86960, #86945

Part-time: #86799 (.50)

General Education, Clerical Staff**

Secretary II, SR 14, #22313

Clerk-Typist II, SR08, #26658, #22310, #42059

Clerk-Typist II, SR08, #47900 (.50)

State of Hawaii
University of Hawaii
Kapiolani Community College
Instruction

Position Organization Chart
Chart III a

General Funds (39.00)

Chart Updated

Date June 30, 1994

*Chairperson is appointed from among faculty positions within department.

**Secretarial and Clerical staff serves all four General Education Departments—Social Science,
Language Arts, Mathematics/Science, and Humanities.

CHART UPDATED
JUN 30 1994
DATE _____

Business Education Division/Department

Business Education

Accounting/Data Processing

Chairperson, # _____ *

Faculty

Total (11.00)

Full-time: #82026, #82066, #82931, #82795, #83221, #82728
#84337, #82503, #86591, #86598, #87123

Business Administration

Chairperson, # _____ *

Faculty

Total (5.00)

Full-time: #82218, #82429, #82389, #84150,
#84369

Business Education, Clerical Staff

Secretary II, SR 14, #22312

Clerk-Typist II, SR 08, #47612 (.50)

*Chairperson is appointed from among faculty positions within department.


State of Hawaii
University of Hawaii
Kapiolani Community College

Instruction

Position Organization Chart
Chart III b

General Funds (17.50)

Approved:


MAR - 6 1995
Joyce S. Tsunoda
Senior Vice President, University of Hawaii
and Chancellor for Community Colleges

Business Education Division/Department

Business Education

Accounting/Data Processing

Chairperson, # _____ *

Faculty

Total (12.00)

Full-time: #82026, #82066, #82728, #82931, #82795, #83221,
#84337, #82503, #83901, #86591, #86598, #87123

Business Administration

Chairperson, # _____ *

Faculty

Total (5.00)

Full-time: #82218, #82429, #82389, #84150,
#84369

Business Education, Clerical Staff

Secretary II, SR 14, #22312

Clerk-Typist II, SR 08, #47612 (.50)

*Chairperson is appointed from among faculty positions within department.

State of Hawaii
University of Hawaii
Kapiolani Community College
Instruction

Position Organization Chart
Chart III b

General Funds (18.50)

Chart Updated
Date June 30, 1994

SUPERSEDED
Date MAR 6 1995

CHART UPDATED
DATE JUN 30 1994

Food Service and Hospitality Education Division/Department

Food Service and Hospitality Education

Chairperson, # _____ *

Faculty Total (14.50)

Full-time: #82467, #82970, #83225, #83460, #83684, #84091,
#84103, #84304, #84539, #82683, #83133, #86597,
#86670, #86719

Part-time: #82540 (.50)

UH Educational & Academic Support Sp, P01, #81420 (w), #81422 (w)

Food Service, Clerical Staff

Secretary II, SR 14, #16962

Cook II, WB 08, #22318 (w)

Snack Bar Cashier, SR 06, #22319 (w)

Purchasing Technician I, SR 11, #29010 (w)

Cafeteria Helper, WB 02, #32863 (w)

*Chairperson is appointed from among faculty positions within department.
(w) Represents positions funded by the Food Service Revolving Fund.

State of Hawaii
University of Hawaii
Kapiolani Community College

Instruction

Position Organization Chart
Chart III c

General Funds (15.50)
(W) Revolving Funds (6.00)

Chart Updated
Date June 30, 1994

CHART UPDATED
DATE JUN 30 1994

General Education Division/Department

General Education

Mathematics/Science

Chairperson, # _____ *

Faculty Total (23.00)

Full-time: #82492, #82981, #83974, #84458, #82394, #83096,
#83262, #83688, #83733, #83357, #83939, #87401,
#82910, #86600, #86592, #86593, #86606, #86754,
#86718, #82031, #86827, #86830, #86959

UH Educational Specialist I, P03, #81246

Humanities

Chairperson, # _____ *

Faculty Total (16.00)

Full-time: #84971, #83094, #82631, #82925, #83809, #84974,
#82607, #84470, #82052, #82983, #87402, #87404,
#86602, #84882, #86937, #82231

* Chairperson is appointed from among faculty positions within department.

State of Hawaii
University of Hawaii
Kapiolani Community College
Instruction

Position Organization Chart
Chart III d

General Funds (40.00)

Chart Updated
Date June 30, 1994

CHART UPDATED
DATE JUN 30 1994

Health Education Division/Department

Health Education

Allied Health

Chairperson, # _____ *

Faculty Total (13.10)

Full-time: #84326, #83310, #83667, #82121, #82405, #82576,
#83321, #82162, #85821, #86385, #86384, #86882,
#86886

Part-time: #87052 (.10)

Nursing

Chairperson, # _____ *

Faculty Total (31.50)

Full-time: #82064, #82513, #84487, #84629, #84655, #86740,
#86774, #86777, #86776, #86752, #86751, #86750,
#86749, #86747, #86737, #86738, #86746, #86743,
#86742, #86741, #86832, #86833, #86834, #86836,
#86838, #86837, #86839, #86840

Part-time: #82244 (.50), #84308 (.50), #86581 (.50), #86736 (.50),
#86739 (.50), #88072 (.50), #88074 (.50)

Health Education, Clerical Staff

Secretary II, SR 14, #18093, #32952

Clerk-Typist II, SR08, #42015

*Chairperson is appointed from among faculty positions within department.

State of Hawaii
University of Hawaii
Kapiolani Community College
Instruction

Position Organization Chart
Chart III e

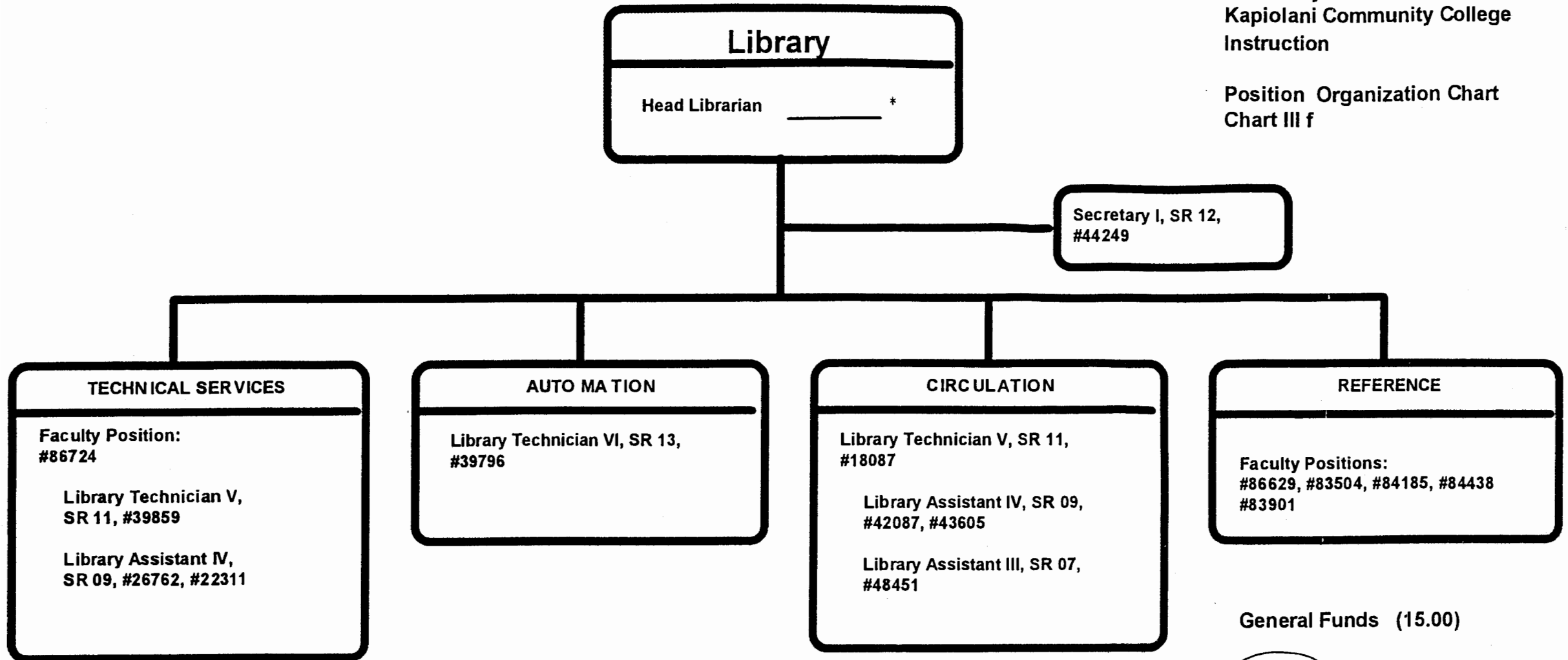
General Funds (47.60)

Chart Updated
Date June 30, 1994

CHART UPDATED
DATE JUN 30 1994

State of Hawaii
University of Hawaii
Kapiolani Community College
Instruction

Position Organization Chart
Chart III f



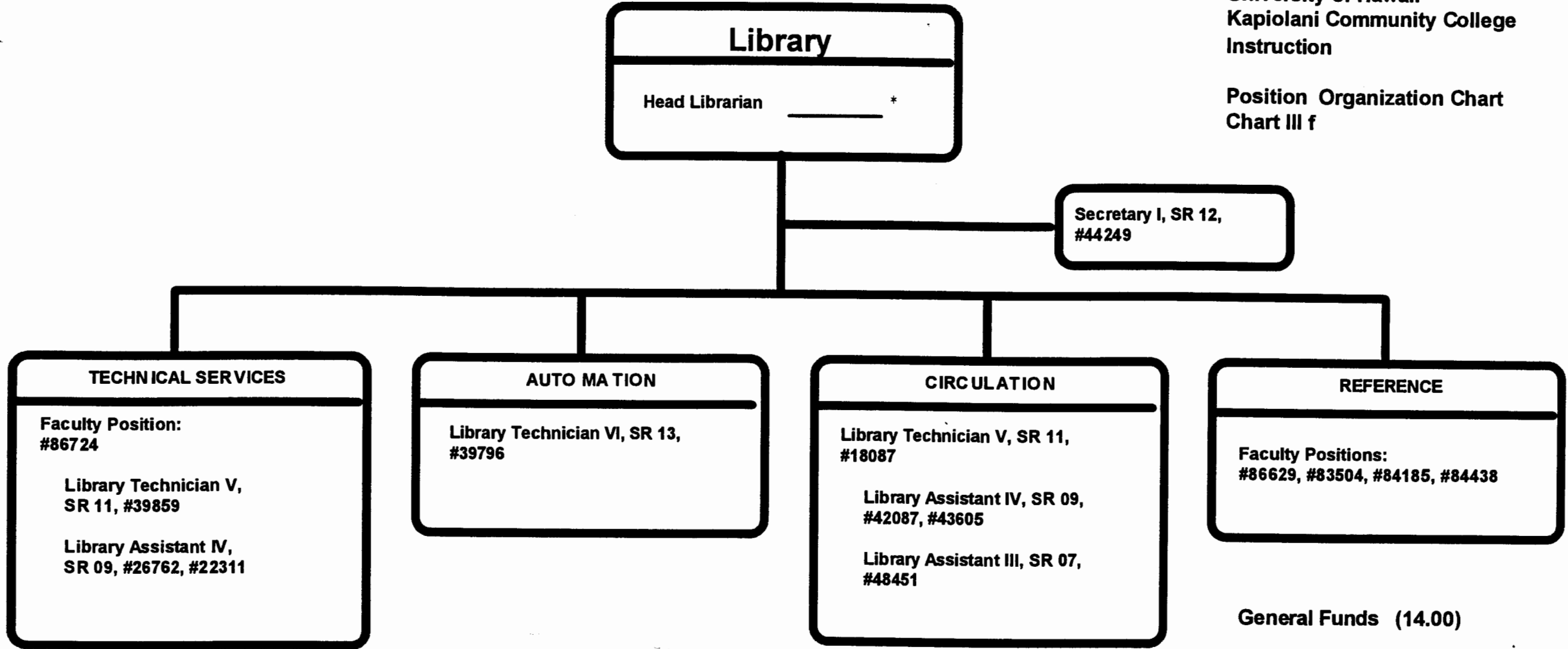
General Funds (15.00)

Approved:

Joyce S. Tsunoda
Joyce S. Tsunoda
Senior Vice President, University of Hawaii
and Chancellor for Community Colleges

MAR - 6 1995

*Unit Head/Chairperson is appointed from among faculty positions within the unit/department.



General Funds (14.00)

Chart Updated

Date June 30, 1994

*Unit Head/Chairperson is appointed from among faculty positions within the unit/department.

SUPERSEDED
Date MAR 6, 1995

CHART UPDATED
DATE JUN 30 1994

Educational Media Center

Unit Head/Chairperson, # _____ *

Faculty: #82386, #87603

UH Electronic Engineer I, P12, #81581
UH Computer Specialist III, P07, #81654

UH Electronic Technician II, P09, #80034
UH Electronic Technician I, P06, #81277
Audio Visual Technician I, WB07, #47350 (.50)
UH Educational Specialist II (Media), P06, #80694

UH Graphic Artist II, P05, #81060
Offset Press Operator III, WB09, #39797
Offset Press Operator II, WB08, #47346 (.50)

Clerk-Steno III, SR 11, #21321

*Unit Head/Chairperson is appointed from among faculty positions within unit/department.

State of Hawaii
University of Hawaii
Kapiolani Community College

Instruction

Position Organization Chart
Chart III g

General Funds (11.00)

Chart Updated
Date June 30, 1994

CHART UPDATED
DATE JUN 30 1994

Learning Assistance Center

Unit Head/Chairperson, # _____ *

Faculty:

Full-time: #86758, #84072, #87120

Part-time: #86757 (.50)

UH Educational Specialist II, P06, #81163 (.50)

Clerk-Typist II, SR 08, #14214

*Unit Head/Chairperson is appointed from among faculty positions at the College.

State of Hawaii
University of Hawaii
Kapiolani Community College

Instruction

Position Organization Chart
Chart III h

General Funds (5.00)

Chart Updated
Date June 30, 1994

CHART UPDATED
DATE JUN 30 1994

Computing Center

UH Computer Specialist V, P11, #81384

UH Computer Specialist IV, P09, #81069, #80529

UH Computer Specialist III, P07, #80340

UH Educational Specialist II, P06, #80351

**State of Hawaii
University of Hawaii
Kapiolani Community College**

Instruction

**Position Organization Chart
Chart III i**

General Funds (5.00)

**Chart Updated
Date June 30, 1994**

CHART UPDATED

DATE JUN 30 1994

Office Administration and Technology and Paralegal Division/Department

Office Administration and Technology/Paralegal Education

Office Administration and Technology Programs

Chairperson, # _____ *

Faculty Total (7.00)

Full-time: #82348, #82380, #82876, #83071, #83734, #83771,
#84223

Paralegal Program

Chairperson, # _____ *

Faculty Total (1.50)

Full-time: #83360

Part-time: #84370 (.50)

Office Administration and Technology/Paralegal Education, Clerical Staff

Secretary II, SR 14, #18092

*Chairperson is appointed from among instructional positions within department.

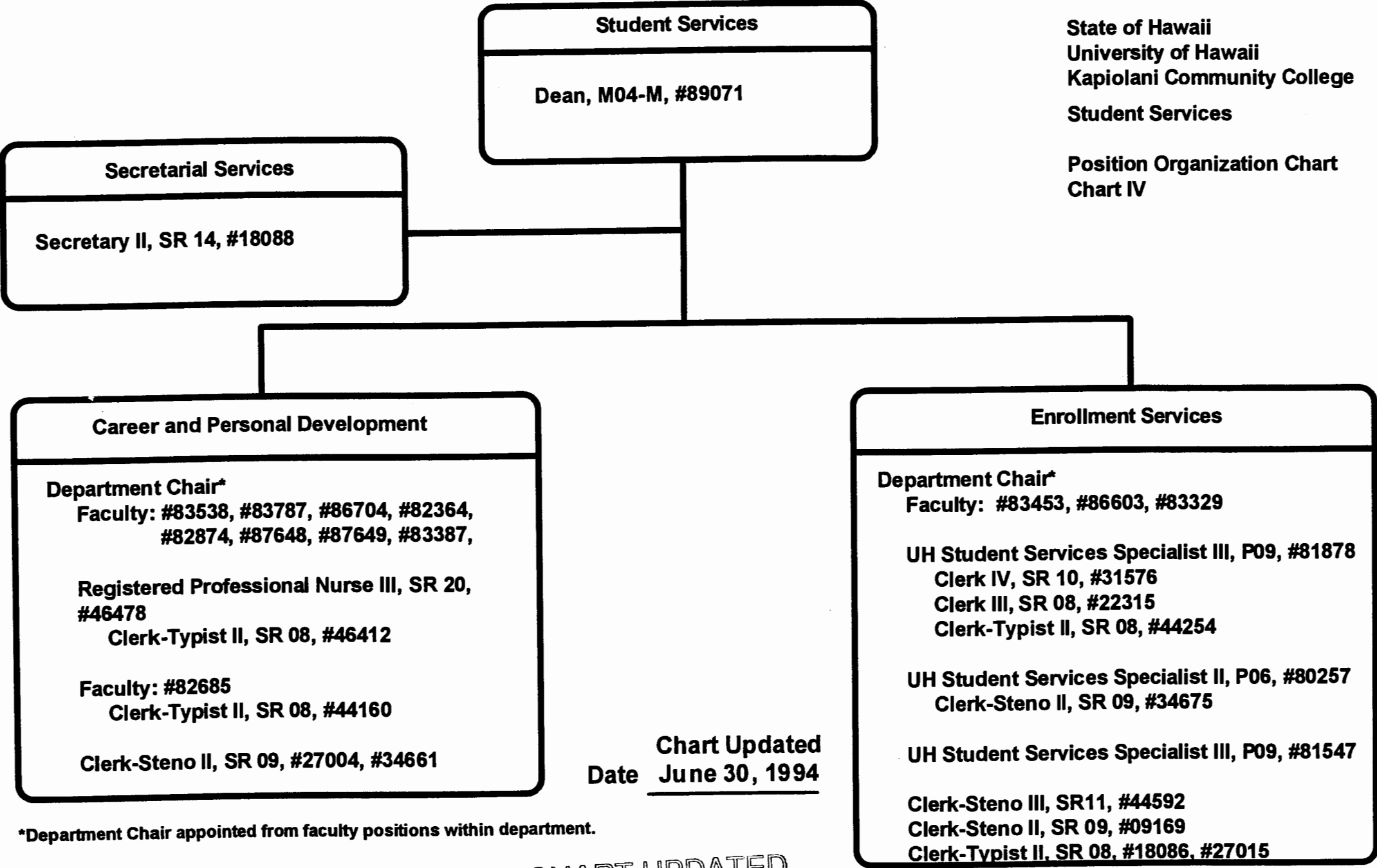
State of Hawaii
University of Hawaii
Kapiolani Community College
Instruction

Position Organization Chart
Chart III j

General Funds (9.50)

Chart Updated
Date June 30, 1994

CHART UPDATED
DATE 'JUN 30 1994



State of Hawaii
University of Hawaii
Kapiolani Community College
Student Services

Position Organization Chart
Chart IV

Chart Updated
Date June 30, 1994

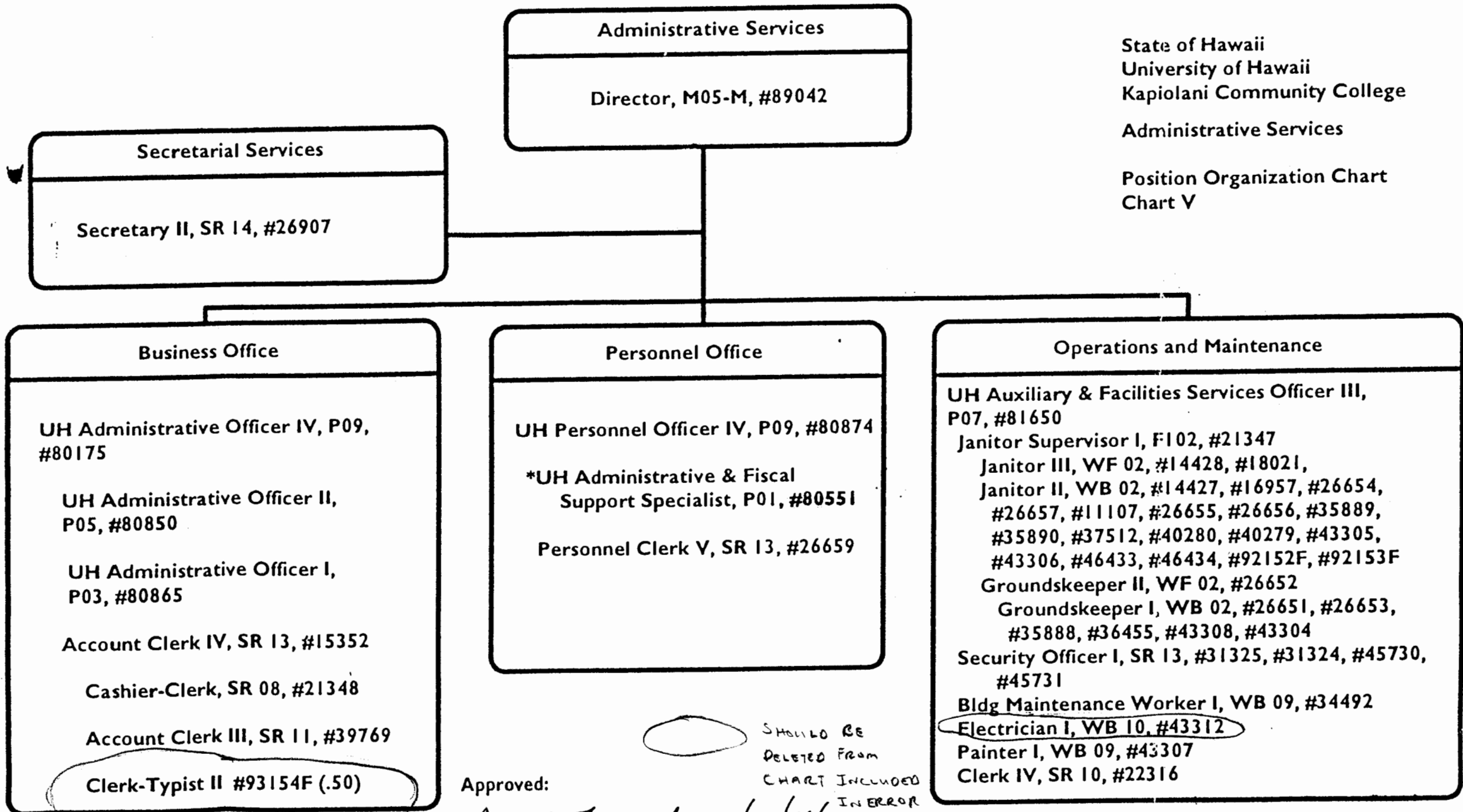
*Department Chair appointed from faculty positions within department.

CHART UPDATED
DATE JUN 30 1994

General Funds (30.00)

State of Hawaii
University of Hawaii
Kapiolani Community College
Administrative Services

Position Organization Chart
Chart V



Approved: Joyce S. Tsunoda 4/27/94
Joyce S. Tsunoda Date
Senior Vice-President & Chancellor for Community Colleges

SHOULD BE
DELETED FROM
CHART INCLUDED
IN ERROR

Pending establishment: Janitor II, #92152F, #92153F

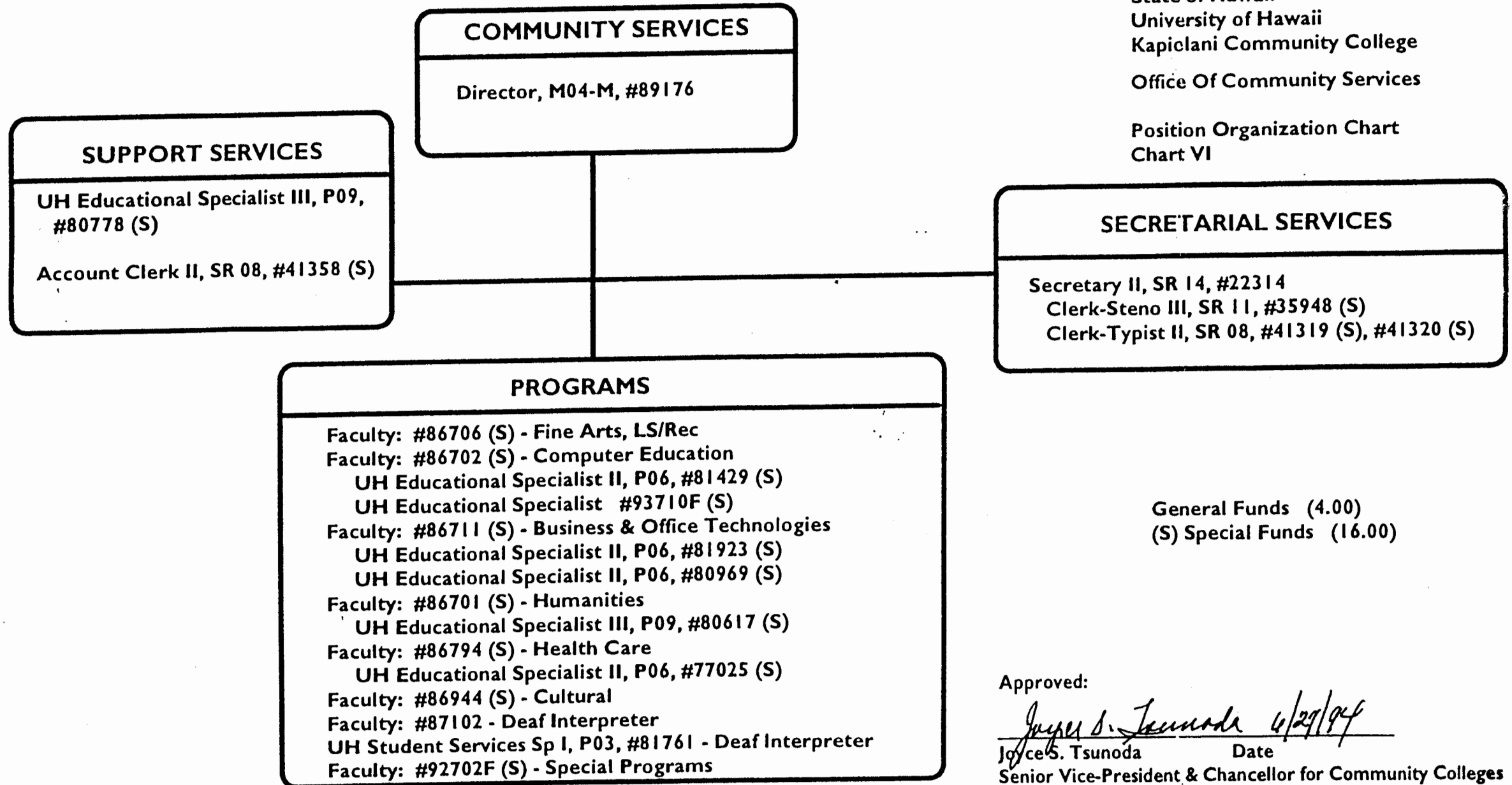
General Funds (48.50)

Pending Establishment: Clerk-Typist #93154F (.50)

*To be redescribed and submitted for reclassification.

State of Hawaii
University of Hawaii
Kaplan Community College
Office Of Community Services

Position Organization Chart
Chart VI



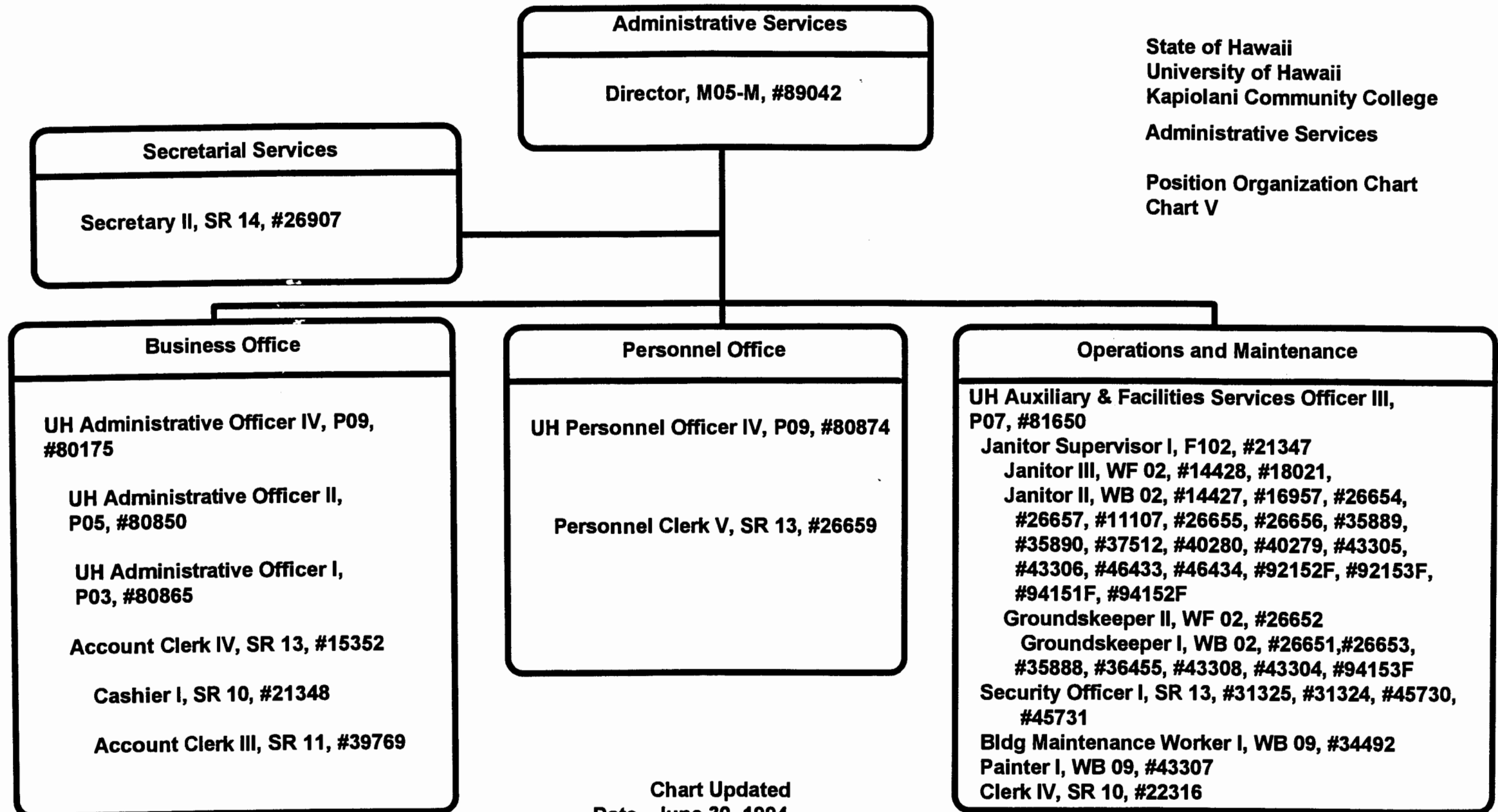
General Funds (4.00)
(S) Special Funds (16.00)

Approved:

Joyce S. Tsunoda 4/29/94
Joyce S. Tsunoda Date
Senior Vice-President & Chancellor for Community Colleges

(S) Represent positions funded by the Community Services Special Fund

Pending establishment: Faculty #92702F (S), UH Ed Spec #93710F (S)



State of Hawaii
University of Hawaii
Kapiolani Community College
Administrative Services

Position Organization Chart
Chart V

Chart Updated
Date June 30, 1994

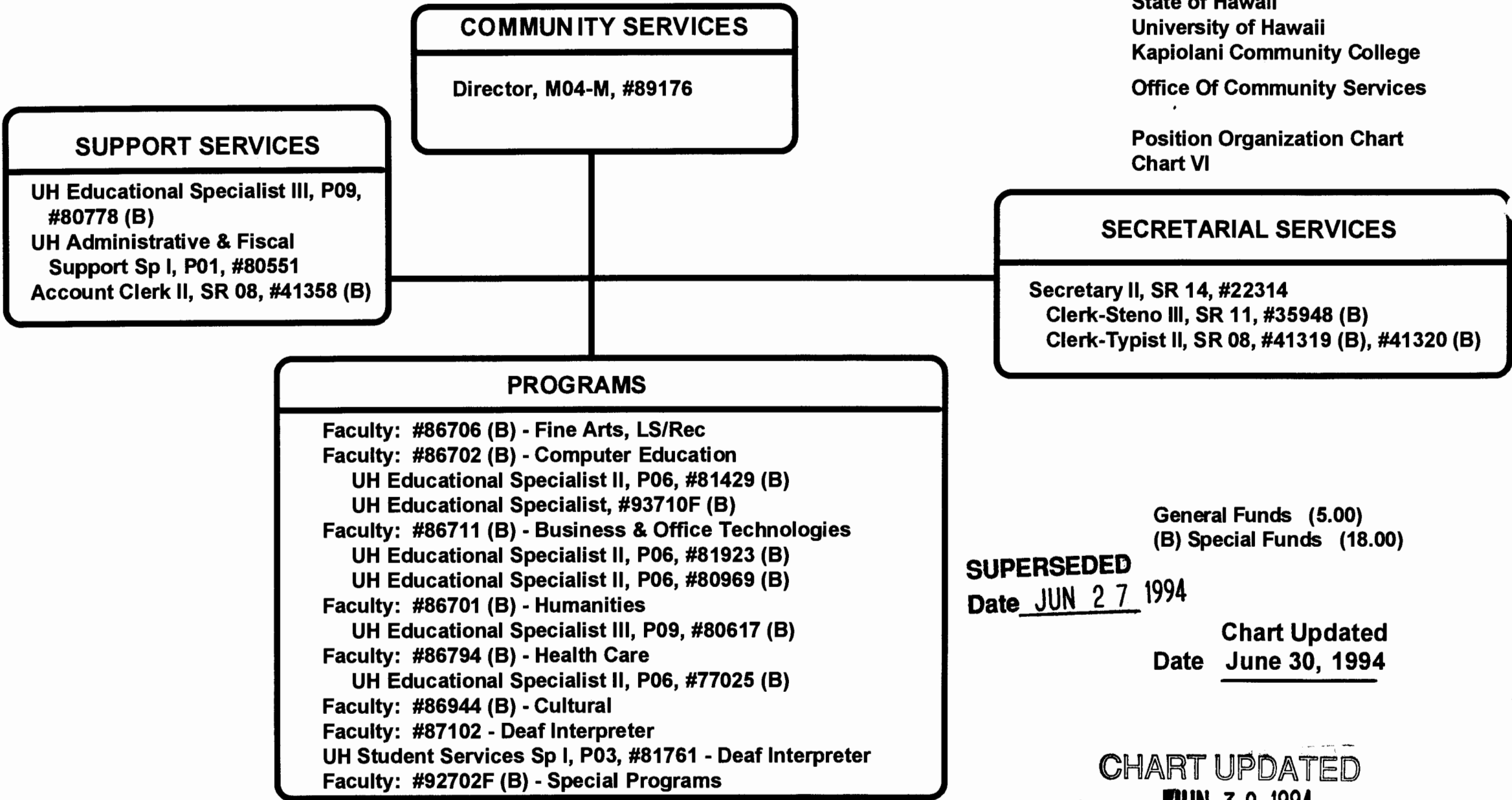
SUPERSEDED
Date JUN 27 1994

CHART UPDATED
DATE JUN 30 1994

General Funds (49.00)

State of Hawaii
University of Hawaii
Kapiolani Community College
Office Of Community Services

Position Organization Chart
Chart VI



General Funds (5.00)
(B) Special Funds (18.00)

SUPERSEDED
Date JUN 27 1994

Chart Updated
Date June 30, 1994

CHART UPDATED
DATE JUN 30 1994

(B) Represent positions funded by the Community Services Special Fund
Pending establishment: Faculty #92702F (B), UH Educ Spec #93710F (B)